

Data Path : Z:\svoasrv\HPCHEM1\BNA\_G\Data\BG011823\  
 Data File : BG056325.D  
 Acq On : 18 Jan 2023 12:24  
 Operator : CG/JU  
 Sample : PB150244BL  
 Misc :  
 ALS Vial : 3 Sample Multiplier: 1

Instrument :  
 BNA\_G  
 ClientSampleId :  
 PB150244BL

Integration Parameters: rteint.p  
 Integrator: RTE  
 Smoothing : ON Filtering: 5  
 Sampling : 1 Min Area: 3 % of largest Peak  
 Start Thrs: 0.2 Max Peaks: 100  
 Stop Thrs : 0 Peak Location: TOP

If leading or trailing edge < 100 prefer < Baseline drop else tangent >  
 Peak separation: 5

Method : Z:\svoasrv\HPCHEM1\BNA\_G\Methods\8270-BG122722.M  
 Title : ASP BNA STANDARDS FOR 5 POINT CALIBRATION

Signal : TIC: BG056325.D\data.ms

peak #	R.T. min	first scan	max scan	last scan	PK TY	peak height	corr. area	corr. % max.	% of total
1	5.345	343	350	358	rBB	144974	219377	5.63%	1.502%
2	5.827	425	432	445	rBV	623869	990312	25.42%	6.782%
3	7.448	700	708	719	rBV	636967	1070839	27.49%	7.333%
4	8.306	846	854	861	rBB	139262	240754	6.18%	1.649%
5	9.481	1046	1054	1064	rBB	362039	649556	16.67%	4.448%
6	11.138	1328	1336	1344	rBV	195008	353721	9.08%	2.422%
7	13.547	1739	1746	1754	rBV	1441335	2268340	58.22%	15.534%
8	14.922	1970	1980	1990	rBB2	404202	636543	16.34%	4.359%
9	16.403	2225	2232	2243	rBV	1076052	1655691	42.50%	11.338%
10	17.660	2440	2446	2453	rBV	575325	863083	22.15%	5.910%
11	20.239	2878	2885	2891	rBV	2845426	3896041	100.00%	26.680%
12	21.955	3171	3177	3184	rVB2	507446	866423	22.24%	5.933%
13	25.398	3754	3763	3777	rVB2	287055	892140	22.90%	6.109%

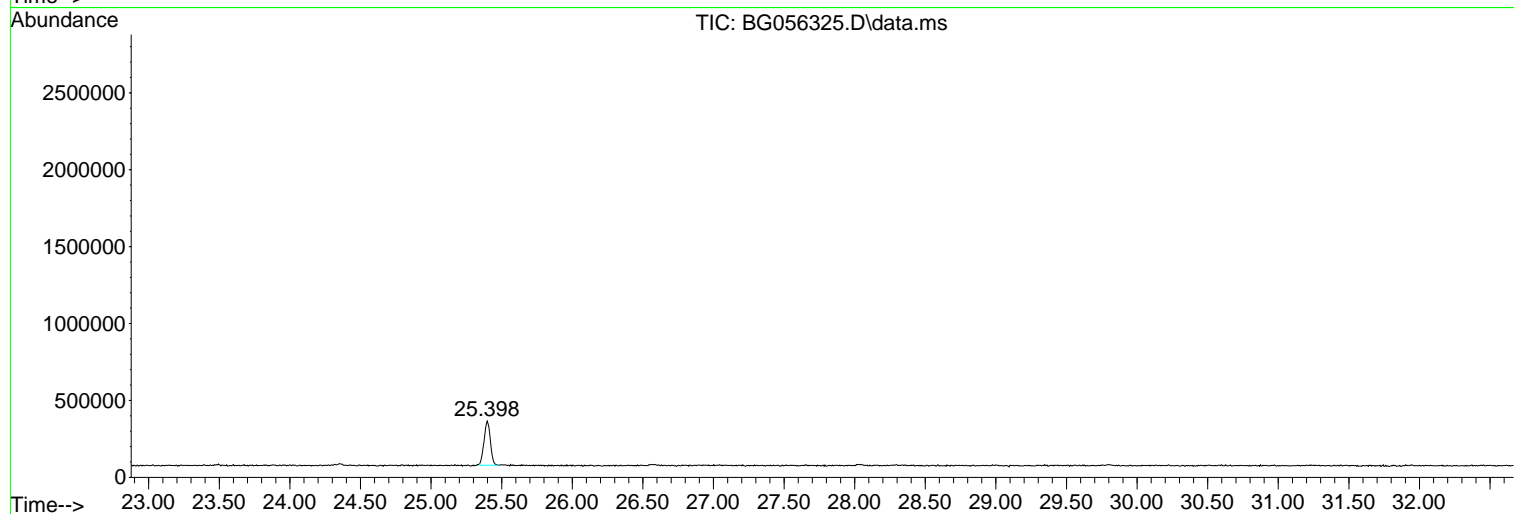
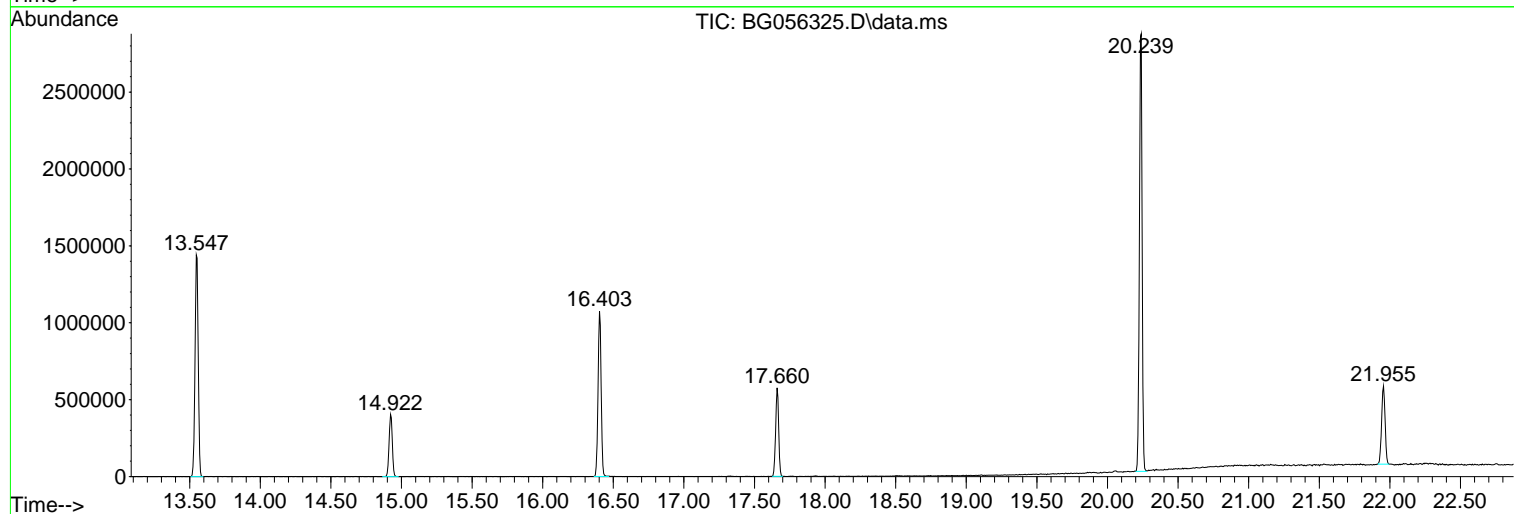
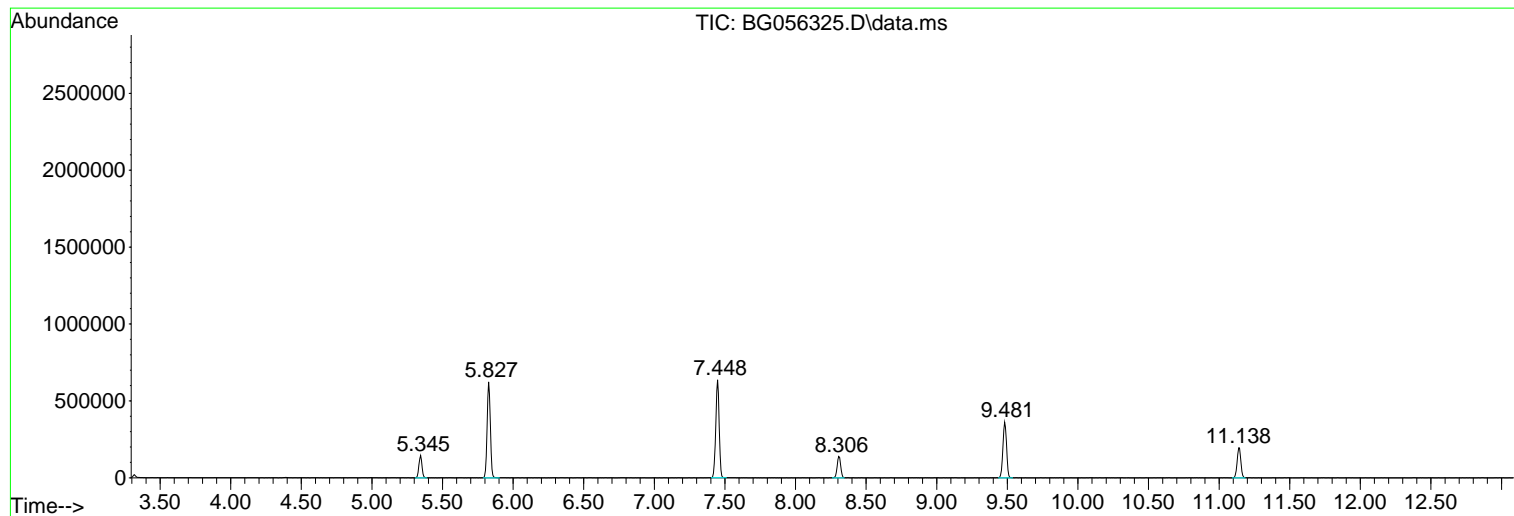
Sum of corrected areas: 14602820

Data Path : Z:\svoasrv\HPCHEM1\BNA\_G\Data\BG011823\  
Data File : BG056325.D  
Acq On : 18 Jan 2023 12:24  
Operator : CG/JU  
Sample : PB150244BL  
Misc :  
ALS Vial : 3 Sample Multiplier: 1

Instrument :  
BNA\_G  
ClientSampleId :  
PB150244BL

Quant Method : Z:\svoasrv\HPCHEM1\BNA\_G\Methods\8270-BG122722.M  
Quant Title : ASP BNA STANDARDS FOR 5 POINT CALIBRATION

TIC Library : C:\Database\NIST20.L  
TIC Integration Parameters: LSCINT.P



Data Path : Z:\svoasrv\HPCHEM1\BNA\_G\Data\BG011823\  
 Data File : BG056325.D  
 Acq On : 18 Jan 2023 12:24  
 Operator : CG/JU  
 Sample : PB150244BL  
 Misc :  
 ALS Vial : 3 Sample Multiplier: 1

Instrument :  
 BNA\_G  
 ClientSampleId :  
 PB150244BL

Quant Method : Z:\svoasrv\HPCHEM1\BNA\_G\Methods\8270-BG122722.M  
 Quant Title : ASP BNA STANDARDS FOR 5 POINT CALIBRATION

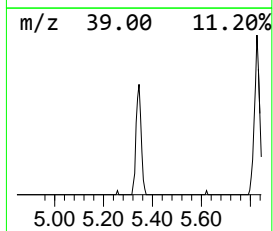
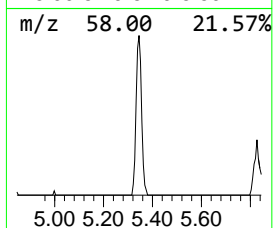
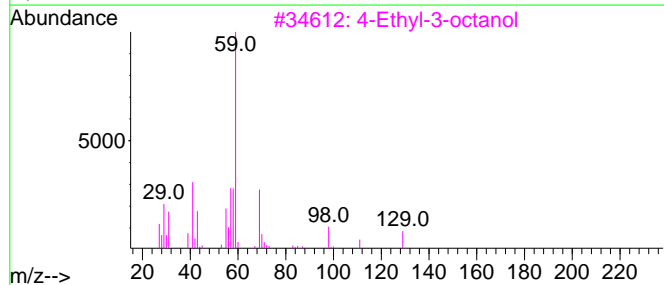
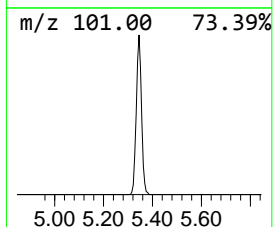
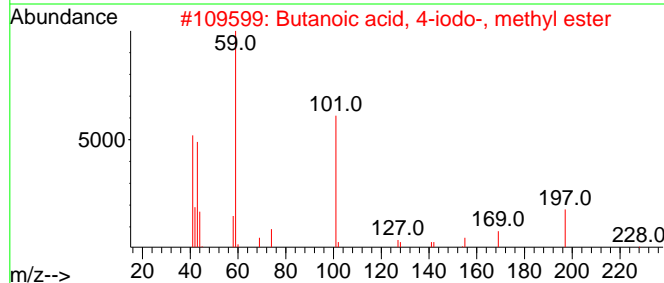
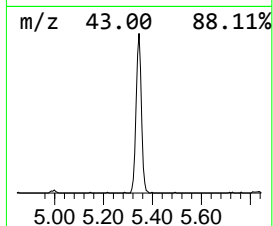
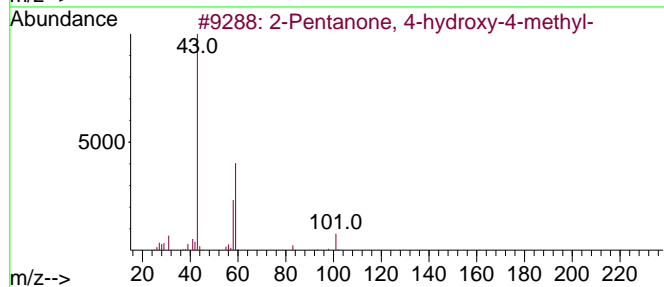
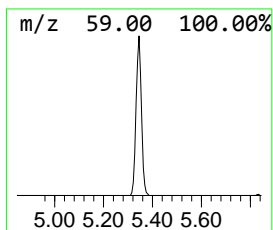
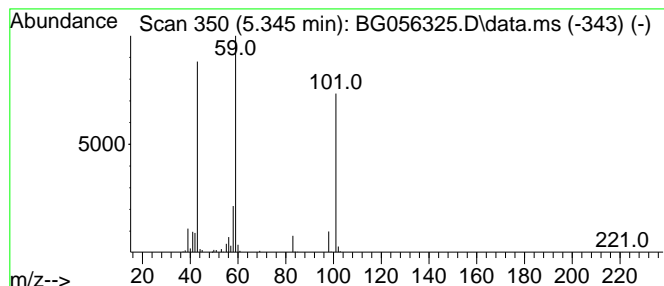
TIC Library : C:\Database\NIST20.L  
 TIC Integration Parameters: LSCINT.P

\*\*\*\*\*  
 Peak Number 1 2-Pentanone, 4-hydroxy-4-me... Concentration Rank 1

R.T.	EstConc	Area	Relative to ISTD	R.T.
5.345	18.22 ng	219377	1,4-Dichlorobenzene-d4	8.306

Hit#	of 5	Tentative ID	MW	MolForm	CAS#	Qual
1		2-Pentanone, 4-hydroxy-4-methyl-	116	C6H12O2	000123-42-2	64
2		Butanoic acid, 4-iodo-, methyl e...	228	C5H9IO2	014273-85-9	39
3		4-Ethyl-3-octanol	158	C10H22O	019781-26-1	23
4		Hexanamide, 6-chloro-N-ethyl-N-m...	191	C9H18ClNO	1000415-58-5	23
5		Acetoxyacetic acid, 4-nitropheny...	239	C10H9NO6	1000307-54-5	17



Data Path : Z:\svoasrv\HPCHEM1\BNA\_G\Data\BG011823\  
Data File : BG056325.D  
Acq On : 18 Jan 2023 12:24  
Operator : CG/JU  
Sample : PB150244BL  
Misc :  
ALS Vial : 3 Sample Multiplier: 1

Instrument :  
BNA\_G  
ClientSampleId :  
PB150244BL

Quant Method : Z:\svoasrv\HPCHEM1\BNA\_G\Methods\8270-BG122722.M  
Quant Title : ASP BNA STANDARDS FOR 5 POINT CALIBRATION

TIC Library : C:\Database\NIST20.L  
TIC Integration Parameters: LSCINT.P

TIC Top Hit name	RT	EstConc	Units	Response	--Internal Standard--			
					#	RT	Resp	Conc
2-Pentanone, 4-...	5.345	18.2	ng	219377	1	8.306	240754	20.0