

Data Path : Z:\SVOASRV\HPCHEM1\BNA G\DATA\BG021919\
 Data File : BG039568.D
 Acq On : 19 Feb 2019 23:41
 Operator : JU/SJ
 Sample : K1528-07
 Misc :
 ALS Vial : 14 Sample Multiplier: 1

Instrument :
 BNA_G
 ClientSampleId :
 DUPE-X

Quant Time: Feb 20 01:31:13 2019
 Quant Method : Z:\SVOASRV\HPCHEM1\BNA G\METHODS\8270-BG012919.M
 Quant Title : ASP BNA STANDARDS FOR 5 POINT CALIBRATION
 QLast Update : Tue Jan 29 15:41:51 2019
 Response via : Initial Calibration

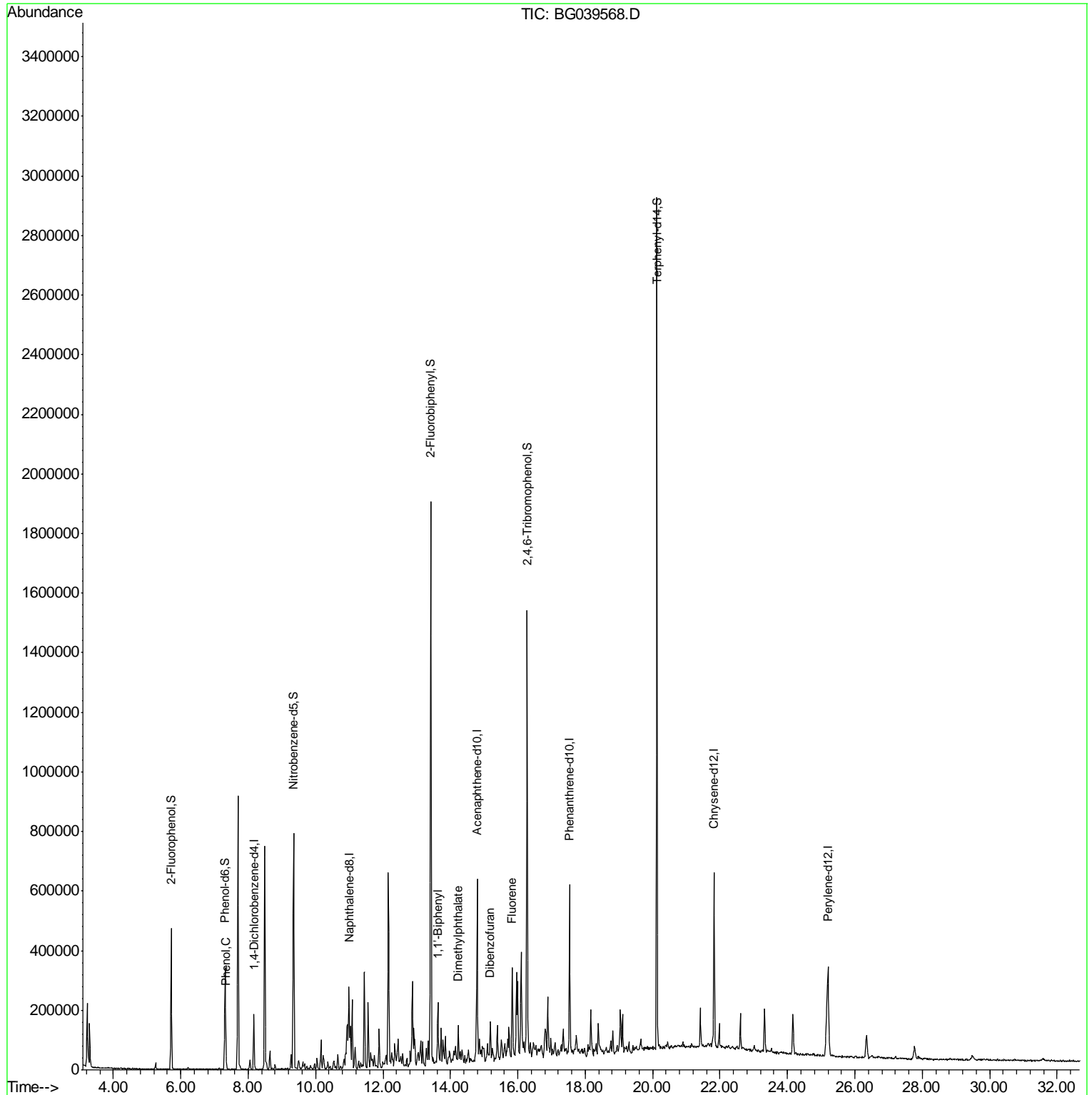
Internal Standards	R.T.	QIon	Response	Conc	Units	Dev(Min)
1) 1,4-Dichlorobenzene-d4	8.17	152	51414	20.00	ng	-0.01
21) Naphthalene-d8	10.99	136	229802	20.00	ng	-0.02
39) Acenaphthene-d10	14.79	164	155502	20.00	ng	-0.02
64) Phenanthrene-d10	17.54	188	353335	20.00	ng	-0.02
76) Chrysene-d12	21.82	240	359999	20.00	ng	-0.02
87) Perylene-d12	25.20	264	347696	20.00	ng	-0.04
System Monitoring Compounds						
5) 2-Fluorophenol	5.72	112	205137	68.29	ng	0.00
7) Phenol-d6	7.31	99	192142	43.45	ng	0.00
23) Nitrobenzene-d5	9.35	82	428005	116.35	ng	-0.02
42) 2,4,6-Tribromophenol	16.28	330	262180	156.57	ng	-0.01
45) 2-Fluorobiphenyl	13.42	172	981320	90.53	ng	-0.02
79) Terphenyl-d14	20.13	244	1278334	75.16	ng	-0.02
Target Compounds						
10) Phenol	7.34	94	25861	5.610	ng	96
46) 1,1'-Biphenyl	13.62	154	80657	6.234	ng	98
50) Dimethylphthalate	14.23	163	63537	5.059	ng	100
55) Dibenzofuran	15.19	168	79722	5.216	ng	98
58) Fluorene	15.83	166	144132	12.649	ng	99

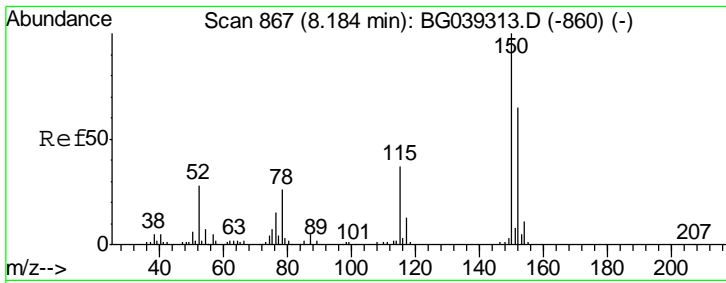
(#) = qualifier out of range (m) = manual integration (+) = signals summed

Data Path : Z:\SVOASRV\HPCHEM1\BNA G\DATA\BG021919\
Data File : BG039568.D
Acq On : 19 Feb 2019 23:41
Operator : JU/SJ
Sample : K1528-07
Misc :
ALS Vial : 14 Sample Multiplier: 1

Instrument :
BNA_G
ClientSampleId :
DUPE-X

Quant Time: Feb 20 01:31:13 2019
Quant Method : Z:\SVOASRV\HPCHEM1\BNA G\METHODS\8270-BG012919.M
Quant Title : ASP BNA STANDARDS FOR 5 POINT CALIBRATION
QLast Update : Tue Jan 29 15:41:51 2019
Response via : Initial Calibration

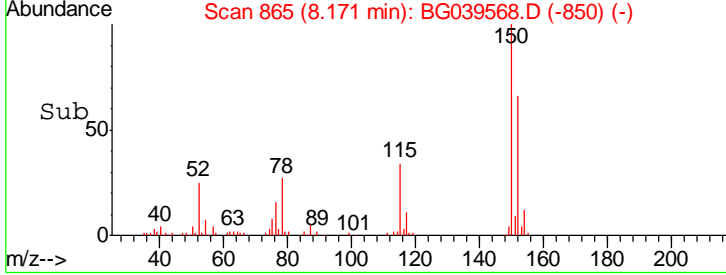
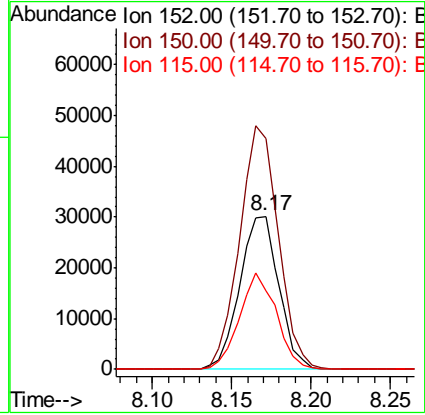
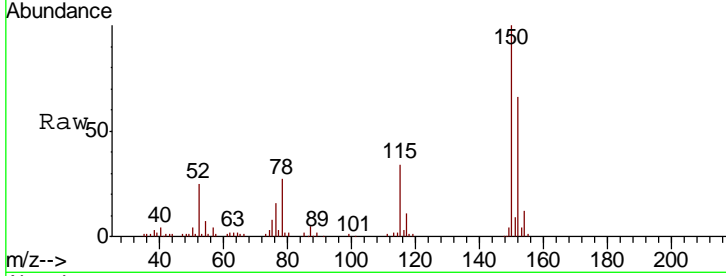




#1
 1,4-Dichlorobenzene-d4
 Concen: 20.000 ng
 RT: 8.17 min Scan# 865
 Delta R.T. -0.01 min
 Lab File: BG039568.D
 Acq: 19 Feb 2019 23:41

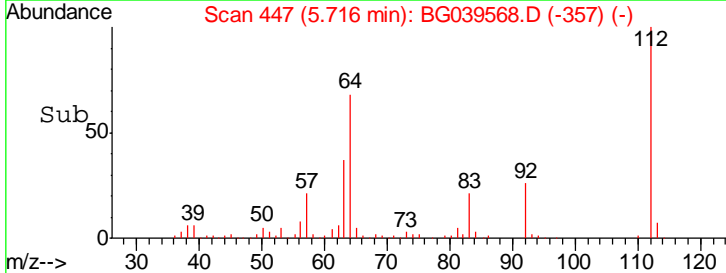
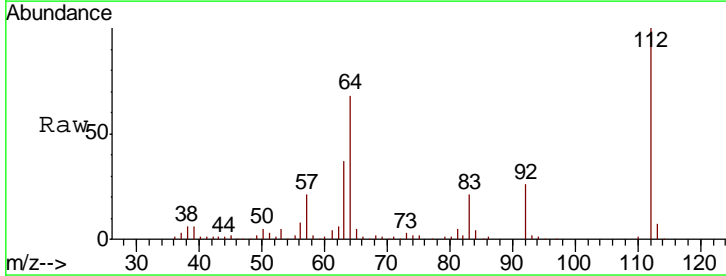
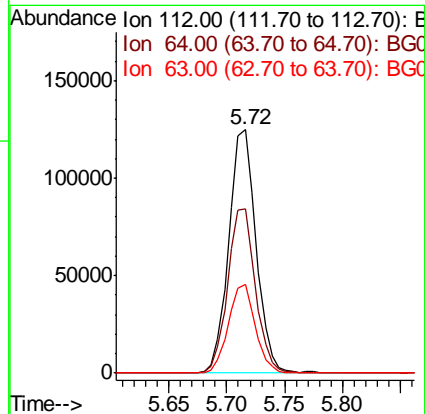
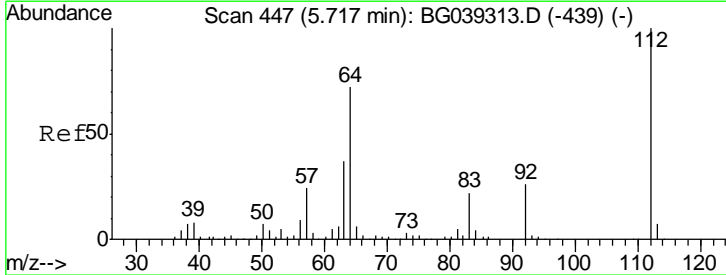
Instrument :
 BNA_G
 ClientSampled :
 DUPE-X

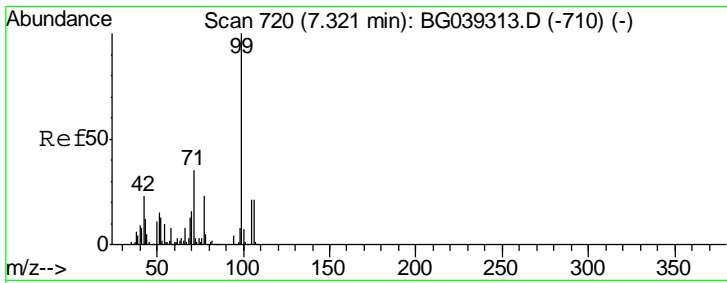
Tgt Ion	Resp	Lower	Upper
152	100		
150	150.8	123.7	185.5
115	51.7	45.9	68.9



#5
 2-Fluorophenol
 Concen: 68.288 ng
 RT: 5.72 min Scan# 447
 Delta R.T. -0.00 min
 Lab File: BG039568.D
 Acq: 19 Feb 2019 23:41

Tgt Ion	Resp	Lower	Upper
112	100		
64	67.5	57.8	86.8
63	36.5	29.8	44.6

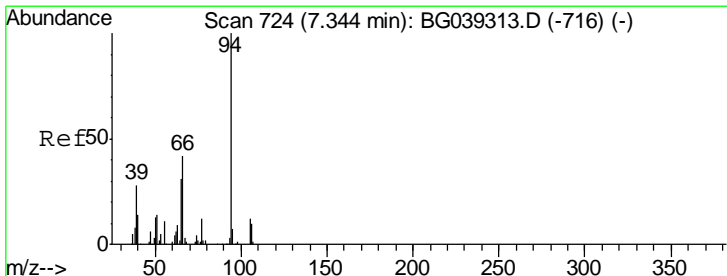
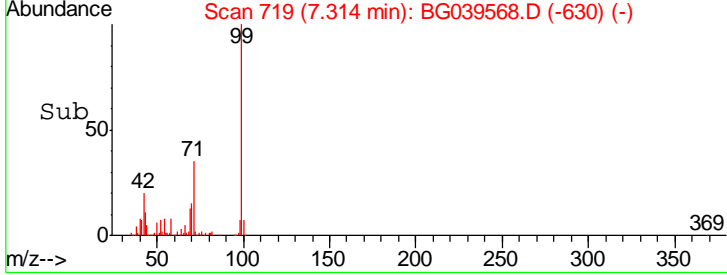
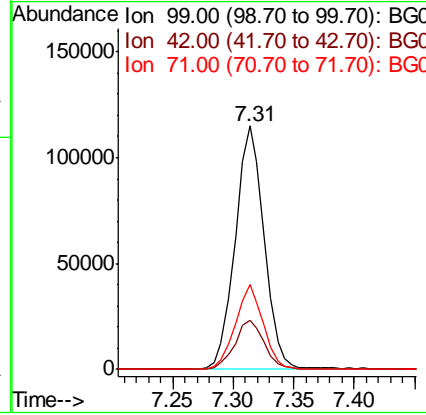
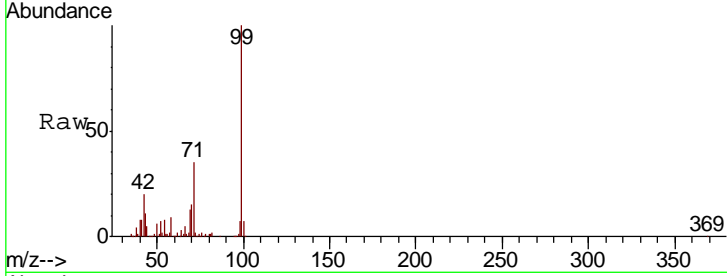




#7
 Phenol-d6
 Concen: 43.453 ng
 RT: 7.31 min Scan# 719
 Delta R.T. -0.01 min
 Lab File: BG039568.D
 Acq: 19 Feb 2019 23:41

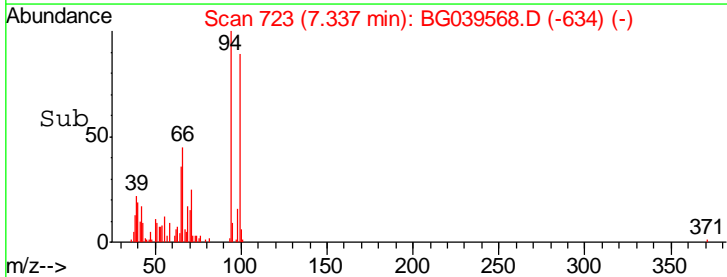
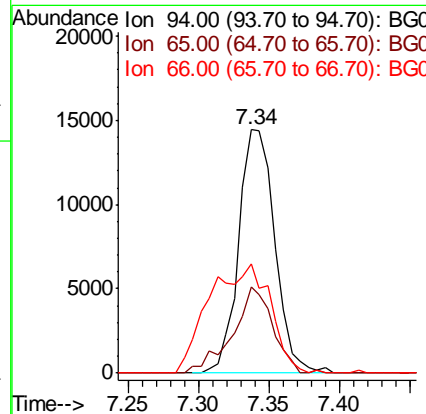
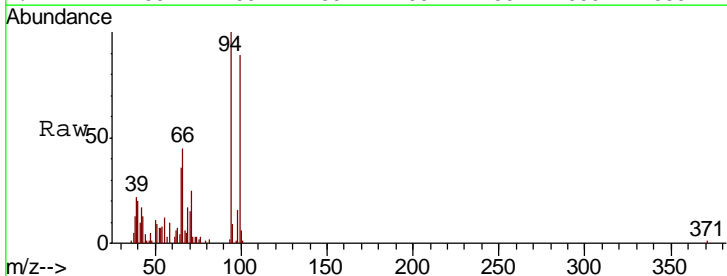
Instrument :
 BNA_G
 ClientSampled :
 DUPE-X

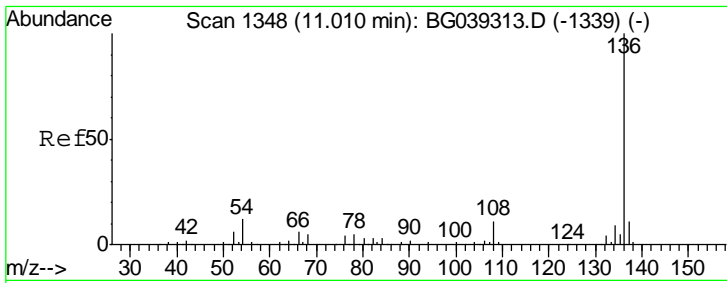
Tgt Ion	Resp	Lower	Upper
99	192142		
42	20.1	18.2	27.2
71	34.7	28.0	42.0



#10
 Phenol
 Concen: 5.610 ng
 RT: 7.34 min Scan# 723
 Delta R.T. -0.01 min
 Lab File: BG039568.D
 Acq: 19 Feb 2019 23:41

Tgt Ion	Resp	Lower	Upper
94	25861		
65	35.6	11.7	51.7
66	44.9	23.7	63.7



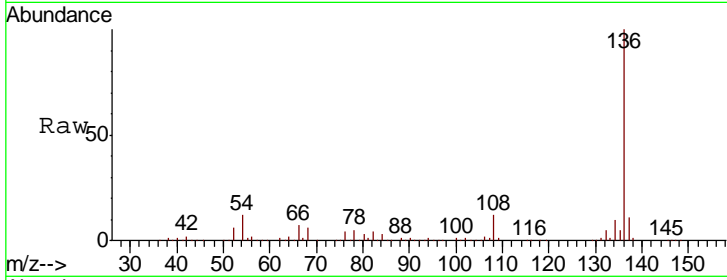


#21
 Naphthalene-d8
 Concen: 20.000 ng
 RT: 10.99 min Scan# 1345
 Delta R.T. -0.02 min
 Lab File: BG039568.D
 Acq: 19 Feb 2019 23:41

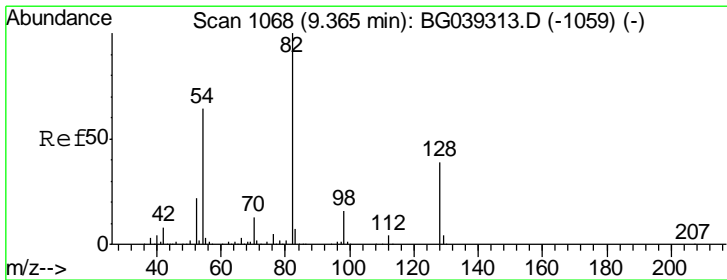
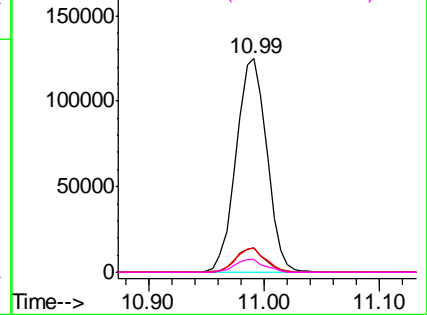
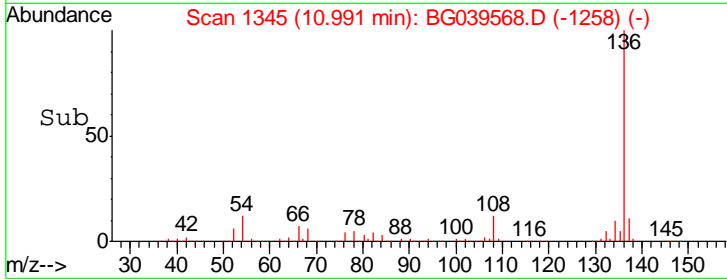
Instrument :
 BNA_G
 ClientSampled :
 DUPE-X

Tgt Ion: 136 Resp: 229802

Ion	Ratio	Lower	Upper
136	100		
137	11.4	9.1	13.7
54	11.6	9.4	14.2
68	6.0	4.2	6.4



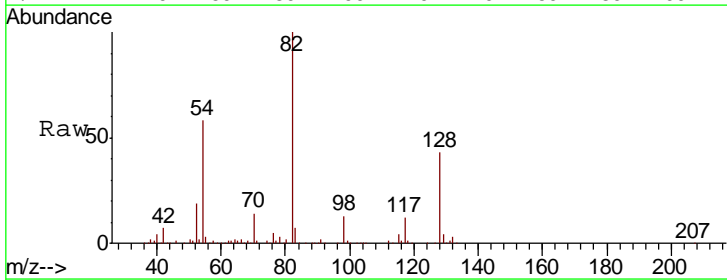
Abundance Ion 136.00 (135.70 to 136.70): E
 Ion 137.00 (136.70 to 137.70): E
 Ion 54.00 (53.70 to 54.70): BGC
 Ion 68.00 (67.70 to 68.70): BGC



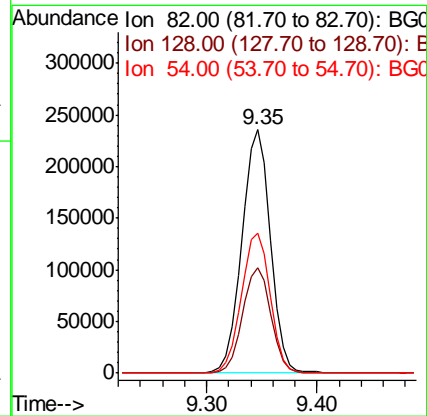
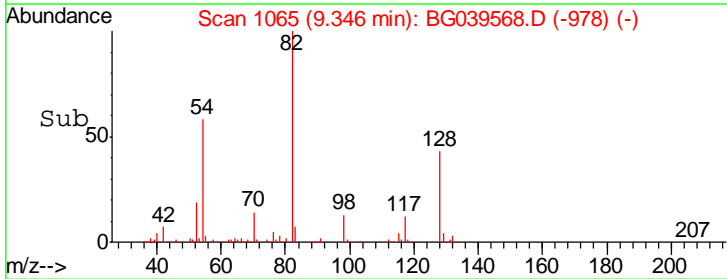
#23
 Nitrobenzene-d5
 Concen: 116.353 ng
 RT: 9.35 min Scan# 1065
 Delta R.T. -0.02 min
 Lab File: BG039568.D
 Acq: 19 Feb 2019 23:41

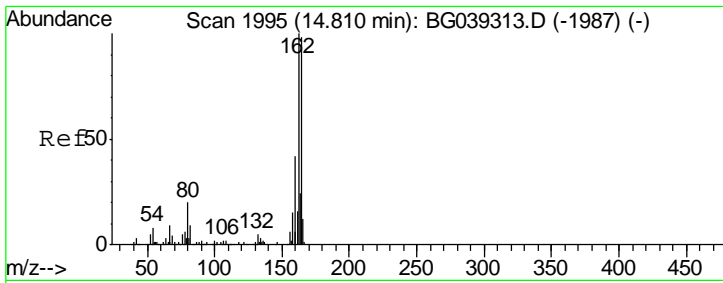
Tgt Ion: 82 Resp: 428005

Ion	Ratio	Lower	Upper
82	100		
128	43.2	31.3	46.9
54	57.7	50.9	76.3



Abundance Ion 82.00 (81.70 to 82.70): BGC
 Ion 128.00 (127.70 to 128.70): E
 Ion 54.00 (53.70 to 54.70): BGC

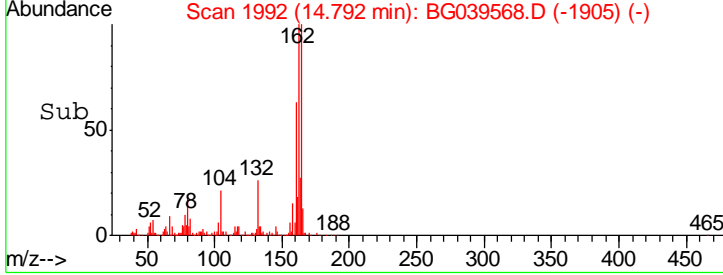
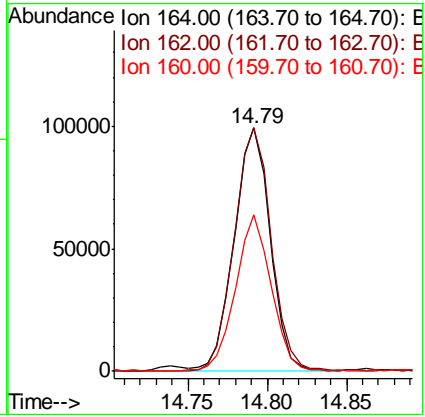
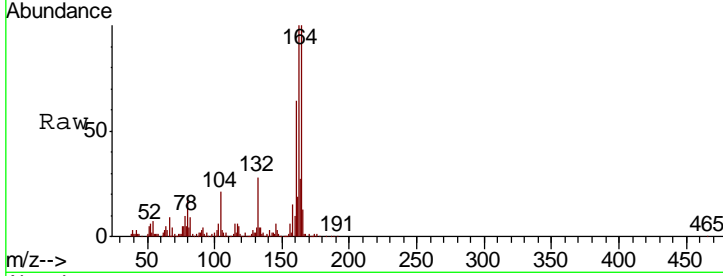




#39
 Acenaphthene-d10
 Concen: 20.000 ng
 RT: 14.79 min Scan# 1992
 Delta R.T. -0.02 min
 Lab File: BG039568.D
 Acq: 19 Feb 2019 23:41

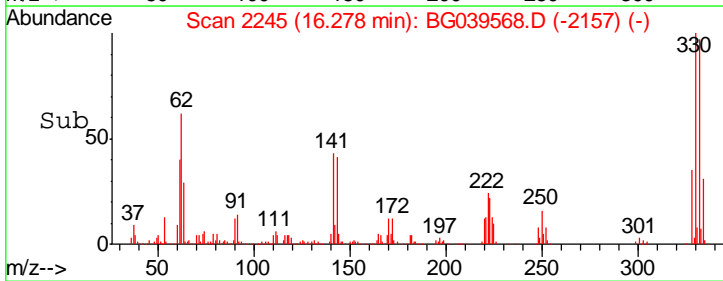
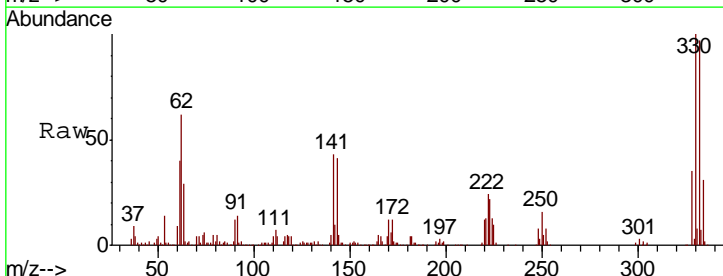
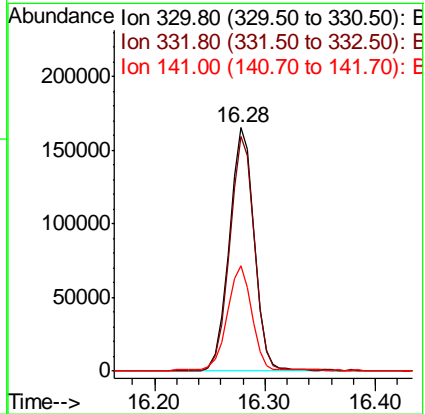
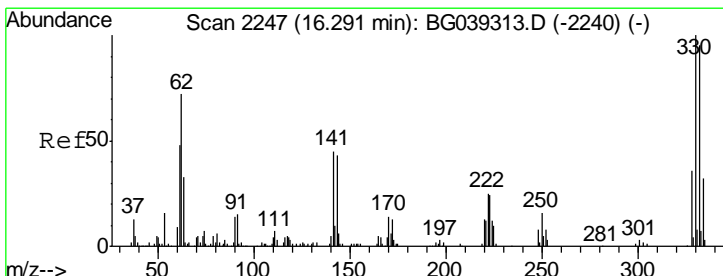
Instrument :
 BNA_G
 ClientSampled :
 DUPE-X

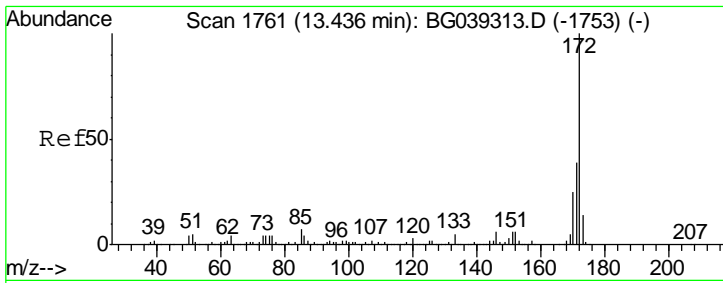
Tgt Ion	Resp	Lower	Upper
164	100		
162	99.9	81.6	122.4
160	64.2	34.2	51.2#



#42
 2,4,6-Tribromophenol
 Concen: 156.573 ng
 RT: 16.28 min Scan# 2245
 Delta R.T. -0.01 min
 Lab File: BG039568.D
 Acq: 19 Feb 2019 23:41

Tgt Ion	Resp	Lower	Upper
330	100		
332	95.7	75.7	113.5
141	43.2	35.6	53.4

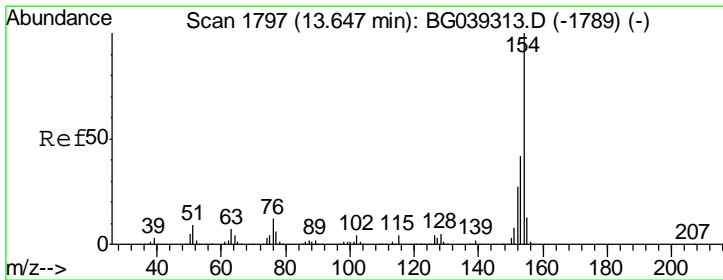
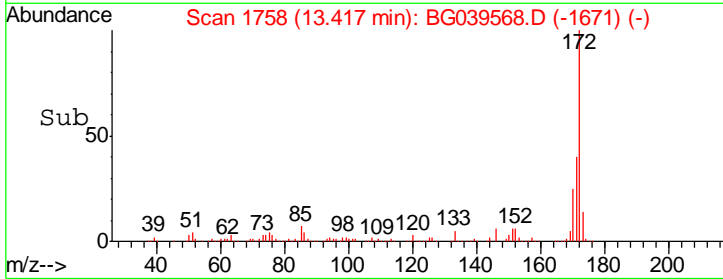
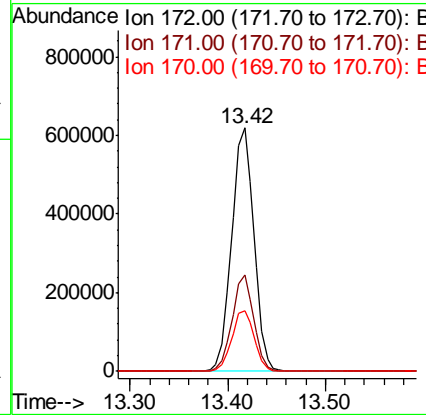
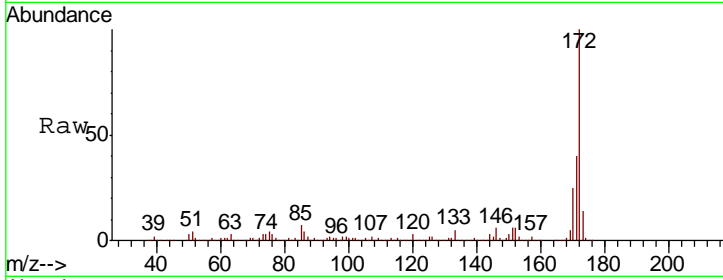




#45
 2-Fluorobiphenyl
 Concen: 90.530 ng
 RT: 13.42 min Scan# 1758
 Delta R.T. -0.02 min
 Lab File: BG039568.D
 Acq: 19 Feb 2019 23:41

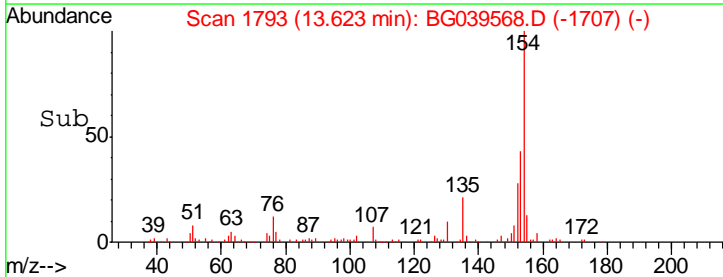
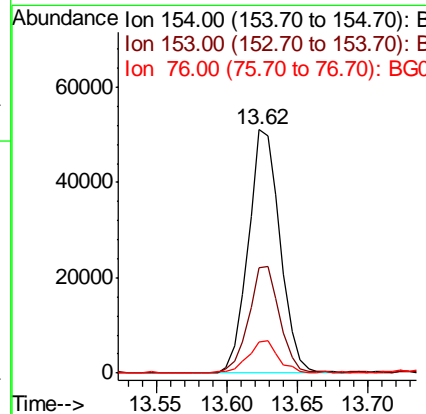
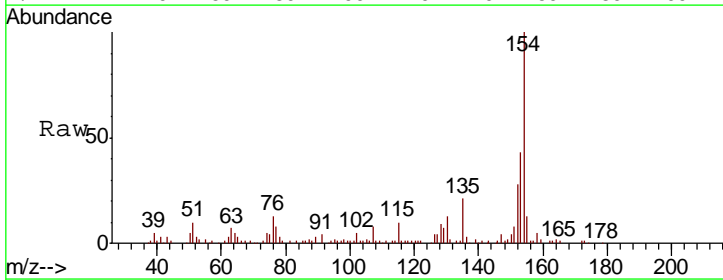
Instrument :
 BNA_G
 ClientSampled :
 DUPE-X

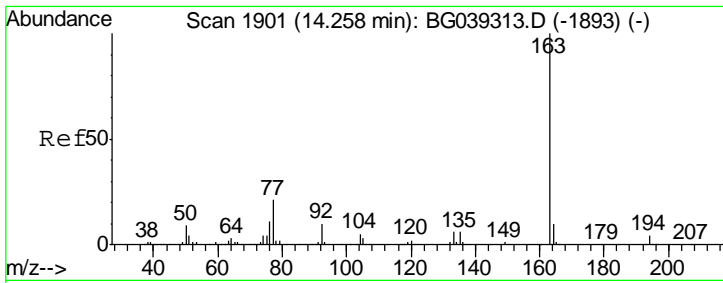
Tgt Ion	Resp	Lower	Upper
172	100		
171	39.7	30.8	46.2
170	25.1	20.2	30.4



#46
 1,1'-Biphenyl
 Concen: 6.234 ng
 RT: 13.62 min Scan# 1793
 Delta R.T. -0.02 min
 Lab File: BG039568.D
 Acq: 19 Feb 2019 23:41

Tgt Ion	Resp	Lower	Upper
154	100		
153	43.5	22.1	62.1
76	12.6	0.0	32.4

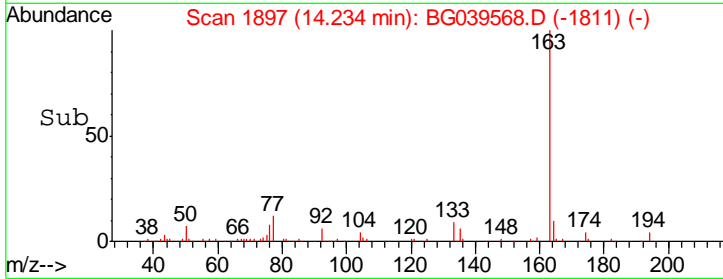
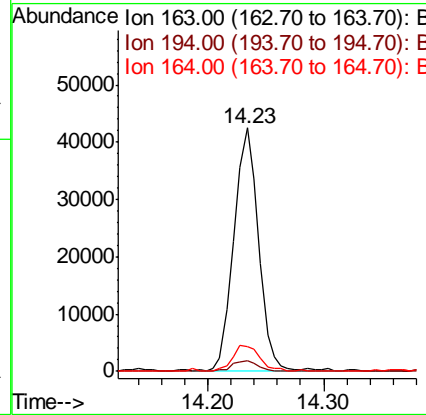
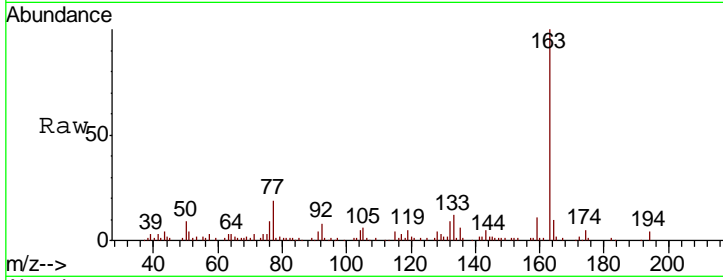




#50
 Dimethylphthalate
 Concen: 5.059 ng
 RT: 14.23 min Scan# 1897
 Delta R.T. -0.02 min
 Lab File: BG039568.D
 Acq: 19 Feb 2019 23:41

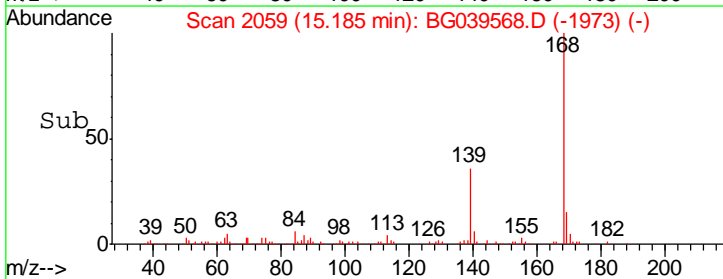
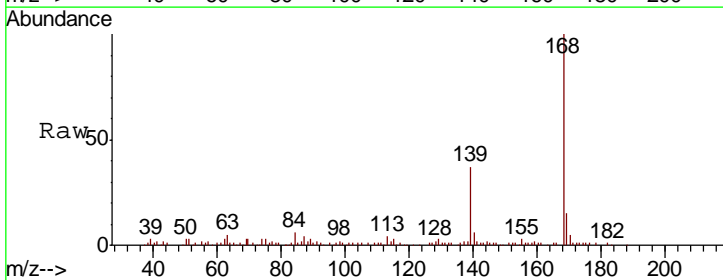
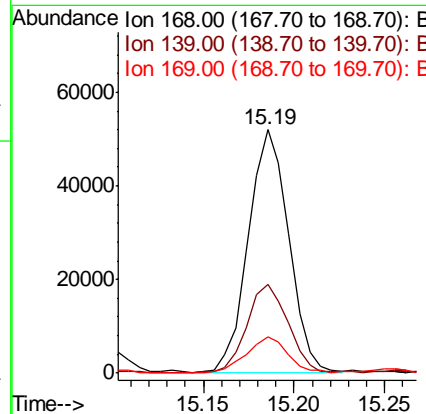
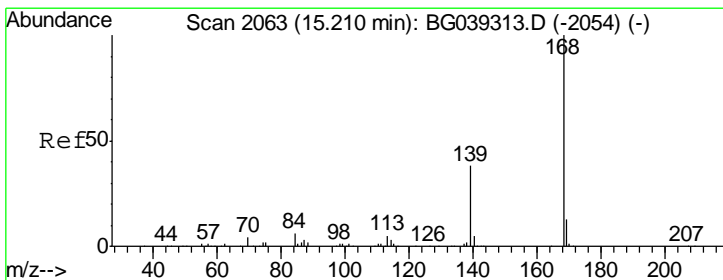
Instrument :
 BNA_G
 ClientSampled :
 DUPE-X

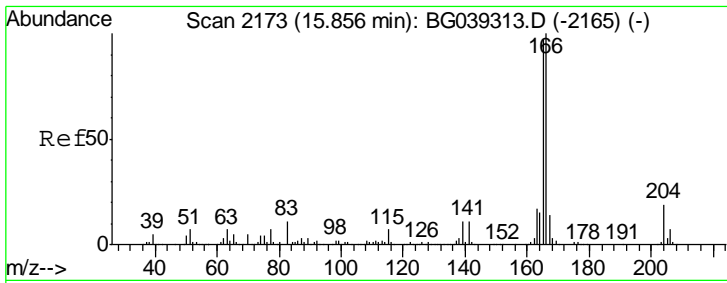
Tgt Ion	Resp	Lower	Upper
163	100		
194	4.4	3.6	5.4
164	10.3	8.4	12.6



#55
 Dibenzofuran
 Concen: 5.216 ng
 RT: 15.19 min Scan# 2059
 Delta R.T. -0.02 min
 Lab File: BG039568.D
 Acq: 19 Feb 2019 23:41

Tgt Ion	Resp	Lower	Upper
168	100		
139	36.6	30.1	45.1
169	14.8	10.6	16.0

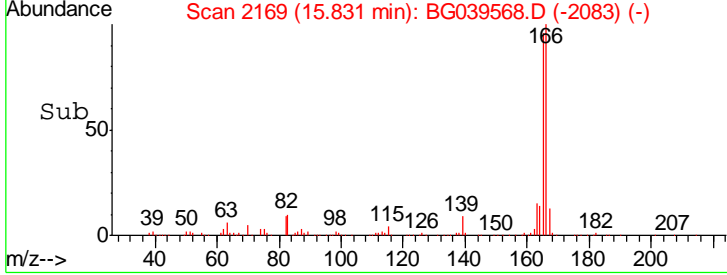
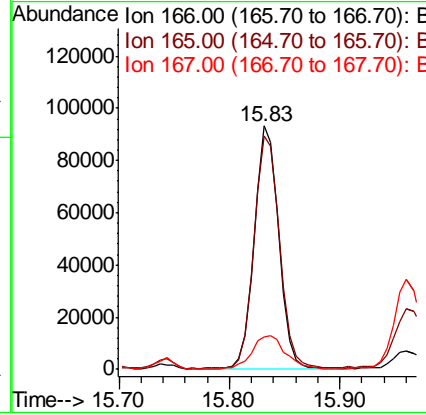
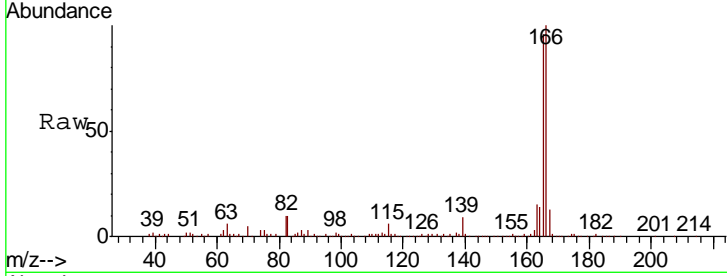




#58
 Fluorene
 Concen: 12.649 ng
 RT: 15.83 min Scan# 2169
 Delta R.T. -0.02 min
 Lab File: BG039568.D
 Acq: 19 Feb 2019 23:41

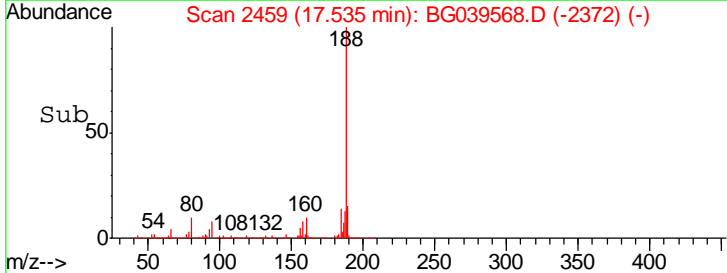
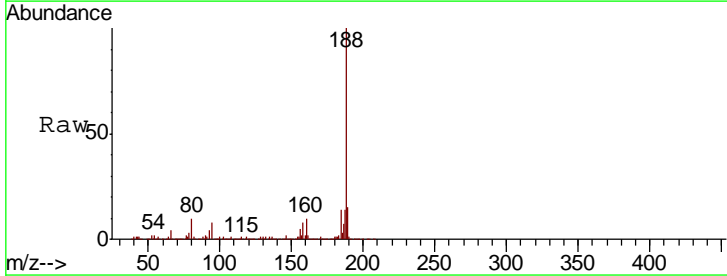
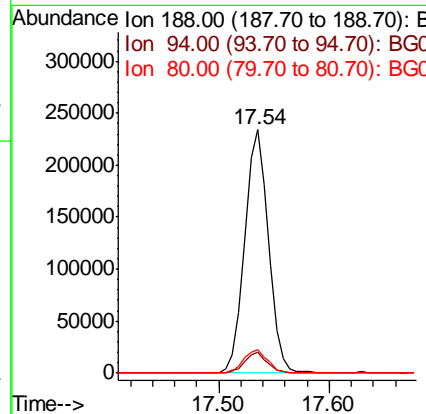
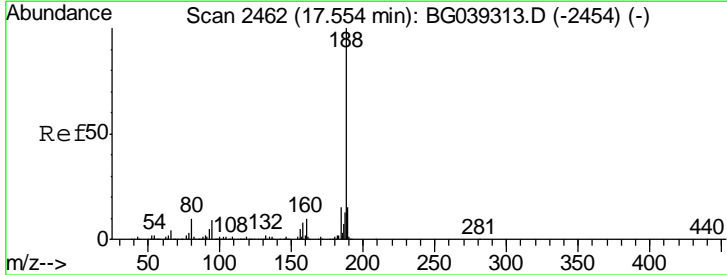
Instrument :
 BNA_G
 ClientSampled :
 DUPE-X

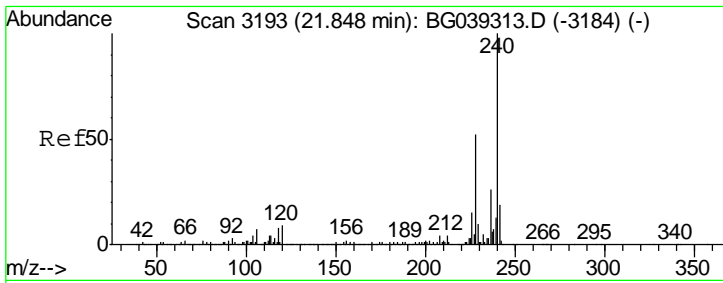
Tgt Ion	Resp	Lower	Upper
166	144132		
165	96.0	77.9	116.9
167	13.2	10.8	16.2



#64
 Phenanthrene-d10
 Concen: 20.000 ng
 RT: 17.54 min Scan# 2459
 Delta R.T. -0.02 min
 Lab File: BG039568.D
 Acq: 19 Feb 2019 23:41

Tgt Ion	Resp	Lower	Upper
188	353335		
94	8.4	6.9	10.3
80	9.6	8.1	12.1

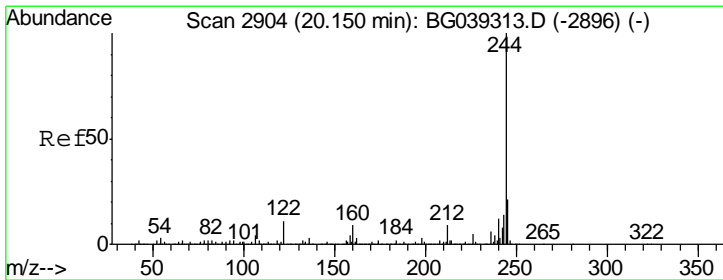
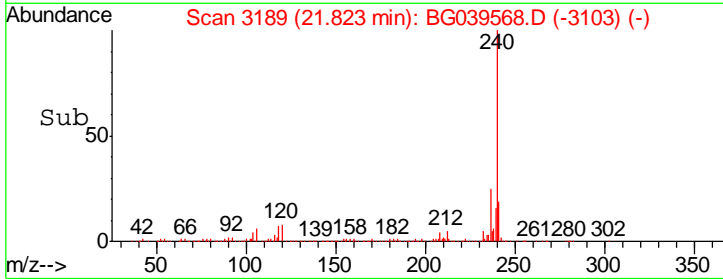
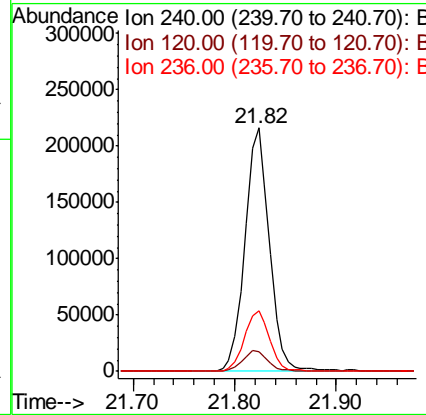
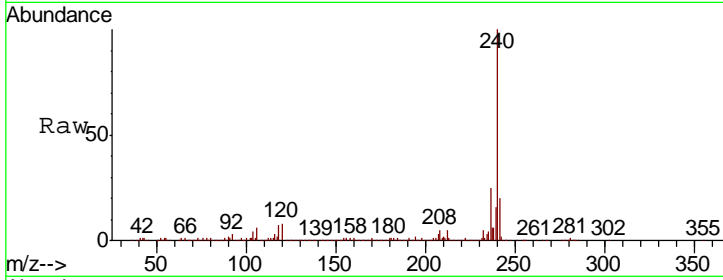




#76
 Chrysene-d12
 Concen: 20.000 ng
 RT: 21.82 min Scan# 3189
 Delta R.T. -0.02 min
 Lab File: BG039568.D
 Acq: 19 Feb 2019 23:41

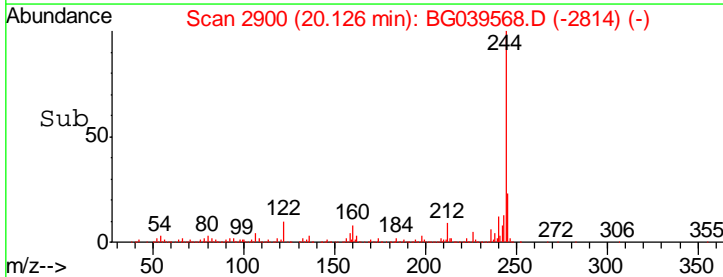
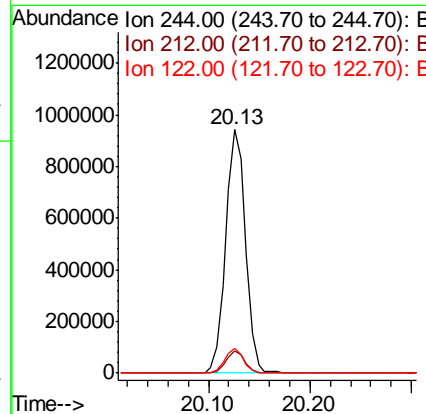
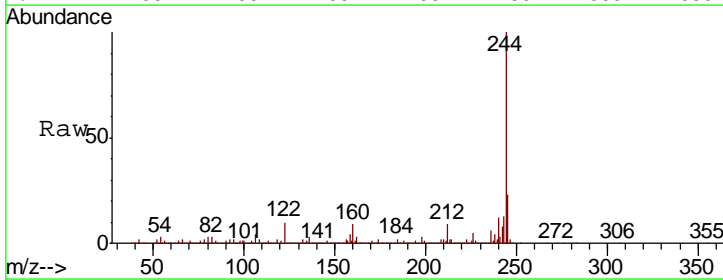
Instrument :
 BNA_G
 ClientSampled :
 DUPE-X

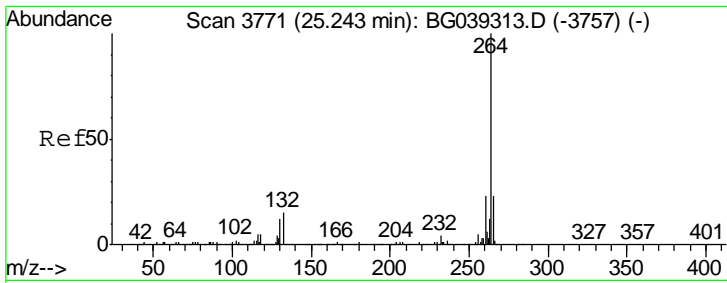
Tgt Ion	Resp	Lower	Upper
240	359999		
120	8.1	7.0	10.6
236	25.1	21.0	31.4



#79
 Terphenyl-d14
 Concen: 75.162 ng
 RT: 20.13 min Scan# 2900
 Delta R.T. -0.02 min
 Lab File: BG039568.D
 Acq: 19 Feb 2019 23:41

Tgt Ion	Resp	Lower	Upper
244	1278334		
212	9.2	7.3	10.9
122	10.1	8.4	12.6





#87
 Perylene-d12
 Concen: 20.000 ng
 RT: 25.20 min Scan# 3764
 Delta R.T. -0.04 min
 Lab File: BG039568.D
 Acq: 19 Feb 2019 23:41

Instrument :
 BNA_G
 ClientSampled :
 DUPE-X

Tot Ion: 264 Resp: 347696

Ion	Ratio	Lower	Upper
264	100		
260	24.3	18.2	27.4
265	20.4	18.5	27.7

