

Data Path : Z:\svoasrv\HPCHEM1\BNA_G\Data\BG022223\
 Data File : BG056698.D
 Acq On : 22 Feb 2023 15:13
 Operator : CG/JU
 Sample : 01638-01
 Misc :
 ALS Vial : 7 Sample Multiplier: 1

Instrument :
 BNA_G
ClientSampleId :
 VB-15-241

Quant Time: Feb 22 17:16:30 2023
 Quant Method : Z:\svoasrv\HPCHEM1\BNA_G\Methods\8270-BG021523.M
 Quant Title : ASP BNA STANDARDS FOR 5 POINT CALIBRATION
 QLast Update : Wed Feb 22 14:34:57 2023
 Response via : Initial Calibration

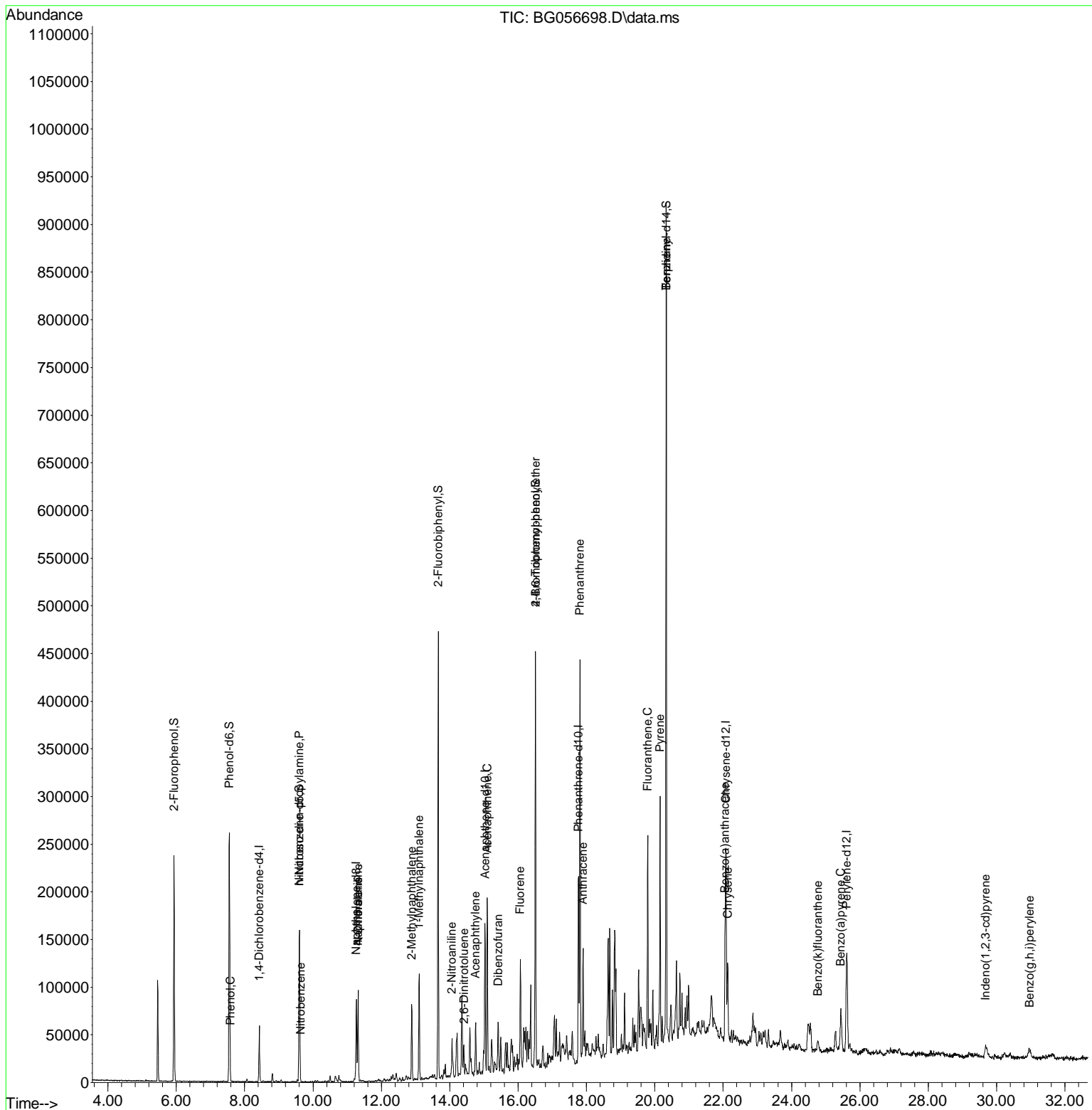
Compound	R.T.	QI on	Response	Conc	Units	Dev(Min)
Internal Standards						
1) 1,4-Dichlorobenzene-d4	8.428	152	16076	20.000	ng	0.00
21) Naphthalene-d8	11.266	136	67766	20.000	ng	# 0.00
39) Acenaphthene-d10	15.032	164	52711	20.000	ng	0.00
64) Phenanthrene-d10	17.770	188	128779	20.000	ng	0.00
76) Chrysene-d12	22.077	240	109314	20.000	ng	0.00
86) Perylene-d12	25.614	264	121964	20.000	ng	0.00
System Monitoring Compounds						
5) 2-Fluorophenol	5.937	112	97045	98.220	ng	0.00
7) Phenol-d6	7.553	99	146457	100.349	ng	0.00
23) Nitrobenzene-d5	9.603	82	99170	74.929	ng	0.00
42) 2,4,6-Tribromophenol	16.507	330	79667	110.391	ng	0.00
45) 2-Fluorobiphenyl	13.663	172	241525	61.357	ng	0.00
79) Terphenyl-d14	20.332	244	451764	67.616	ng	0.00
Target Compounds						
						Qvalue
10) Phenol	7.582	94	3710	2.485	ng	97
19) n-Nitrosodipropylamine	9.603	70	14268	13.059	ng	# 73
24) Nitrobenzene	9.639	77	116	2.759	ng	# 43
31) Naphthalene	11.319	128	75112	19.999	ng	99
33) 4-Chloroaniline	11.319	127	10372	6.045	ng	# 32
37) 2-Methylnaphthalene	12.888	142	34962	11.790	ng	99
38) 1-Methylnaphthalene	13.105	142	50140	18.120	ng	96
48) 2-Nitroaniline	14.069	65	627	5.853	ng	# 3
49) Acenaphthylene	14.756	152	13004	2.533	ng	# 79
51) 2,6-Dinitrotoluene	14.427	165	344	3.005	ng	# 21
52) Acenaphthene	15.097	154	62805	19.831	ng	97
55) Dibenzofuran	15.426	168	15970	2.985	ng	# 92
58) Fluorene	16.066	166	48772	11.529	ng	98
67) 4-Bromophenylphenyl ether	16.507	248	6011	3.636	ng	# 1
71) Phenanthrene	17.811	178	270353	38.587	ng	98
72) Anthracene	17.900	178	76741	10.704	ng	99
75) Fluoranthene	19.792	202	139013	15.037	ng	99
77) Benzidine	20.332	184	7966	3.047	ng	# 92
78) Pyrene	20.156	202	172277	20.868	ng	99
81) Benzo(a)anthracene	22.054	228	72616	8.933	ng	98
83) Chrysene	22.130	228	63356	8.337	ng	98
87) Indeno(1,2,3-cd)pyrene	29.680	276	22736	2.380	ng	# 85
89) Benzo(k)fluoranthene	24.768	252	15838	2.021	ng	99
90) Benzo(a)pyrene	25.438	252	52511	6.856	ng	100
92) Benzo(g,h,i)perylene	30.973	276	19374	2.506	ng	98

(#) = qualifier out of range (m) = manual integration (+) = signals summed

Data Path : Z:\svoasrv\HPCHEM1\BNA_G\Data\BG022223\
 Data File : BG056698.D
 Acq On : 22 Feb 2023 15:13
 Operator : CG/JU
 Sample : 01638-01
 Misc :
 ALS Vial : 7 Sample Multiplier: 1

Instrument :
 BNA_G
 ClientSampleId :
 VB-15-241

Quant Time: Feb 22 17:16:30 2023
 Quant Method : Z:\svoasrv\HPCHEM1\BNA_G\Methods\8270-BG021523.M
 Quant Title : ASP BNA STANDARDS FOR 5 POINT CALIBRATION
 QLast Update : Wed Feb 22 14:34:57 2023
 Response via : Initial Calibration



Abundance Scan 877 (8.441 min): BG056637.D\data.ms (-868)(4)

1, 4-Di chlorobenzene-d4

Concen: 20.000 ng

RT: 8.428 min Scan# 815

Delta R.T. 0.001 min

Lab File: BG056698.D

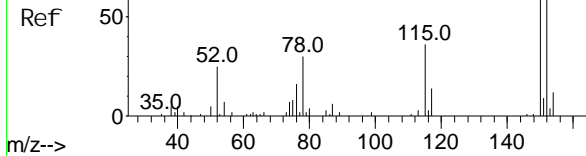
Acq: 22 Feb 2023 15:13

Instrument :

BNA_G

ClientSampleId :

VB-15-241



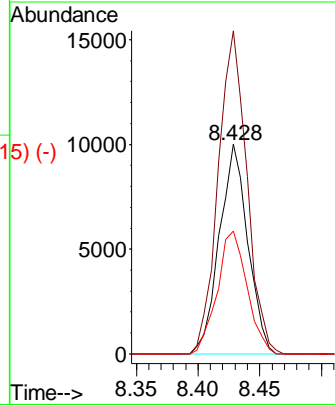
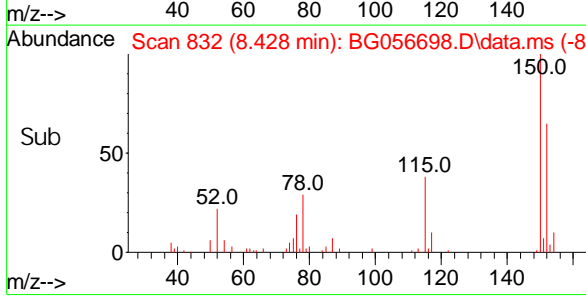
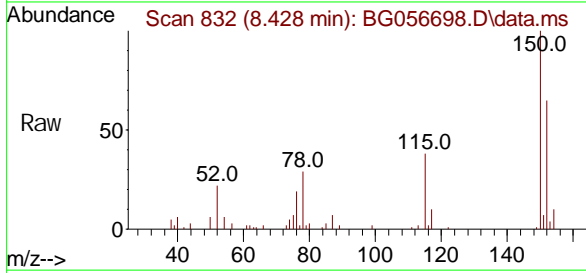
Tgt Ion: 152 Resp: 16076

Ion Ratio Lower Upper

152 100

150 154.0 124.8 187.2

115 58.5 44.7 67.1



Abundance Scan 451 (5.938 min): BG056637.D\data.ms (-444)(5)

2-Fluorophenol

Concen: 98.220 ng

RT: 5.937 min Scan# 408

Delta R.T. 0.002 min

Lab File: BG056698.D

Acq: 22 Feb 2023 15:13

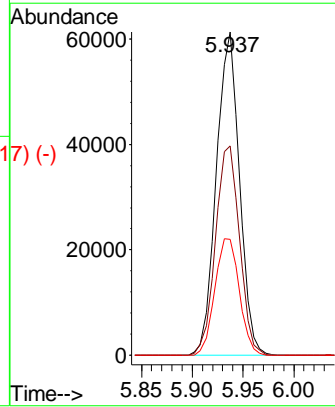
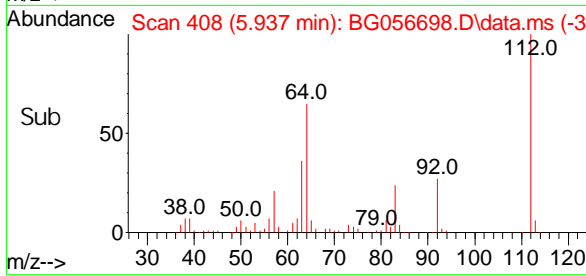
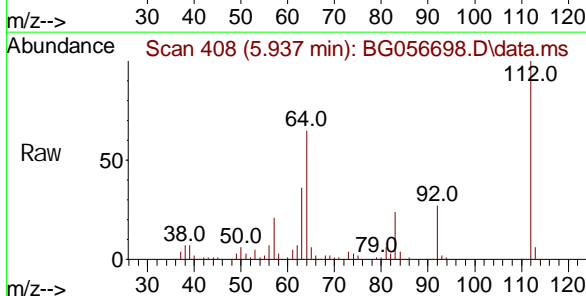
Tgt Ion: 112 Resp: 97045

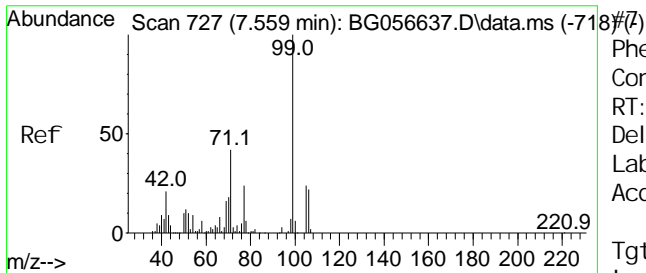
Ion Ratio Lower Upper

112 100

64 64.8 52.6 78.8

63 35.9 29.8 44.6

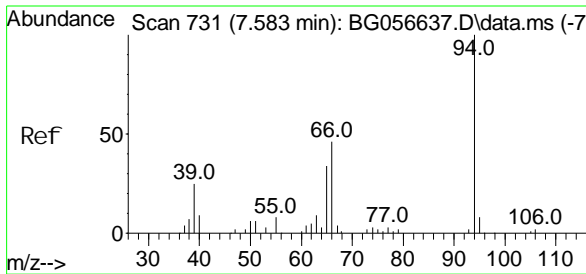
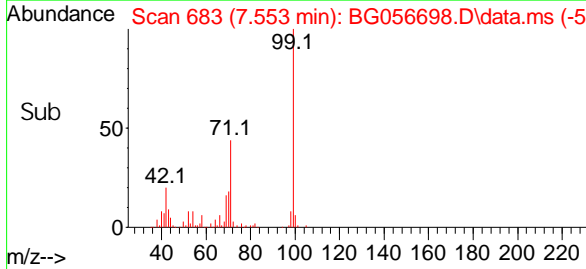
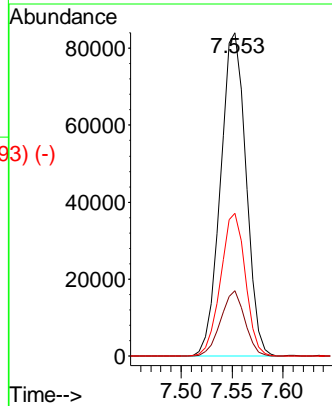
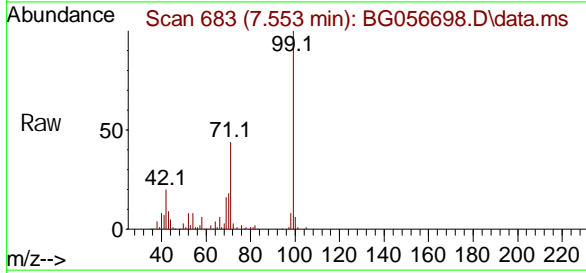




Phenol -d6
 Concen: 100.349 ng
 RT: 7.553 min Scan# 688
 Delta R.T. -0.004 min
 Lab File: BG056698.D
 Acq: 22 Feb 2023 15:13

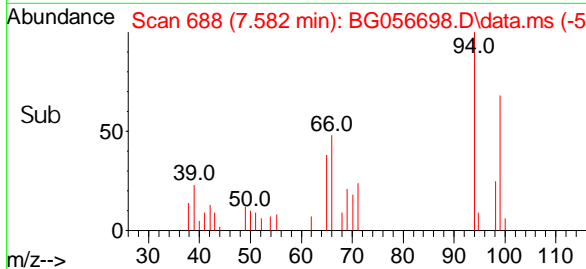
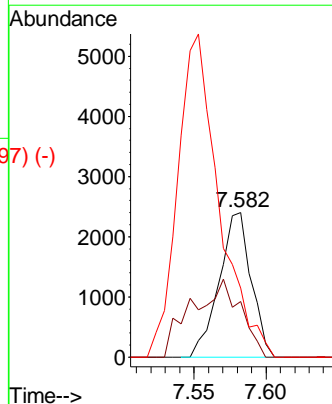
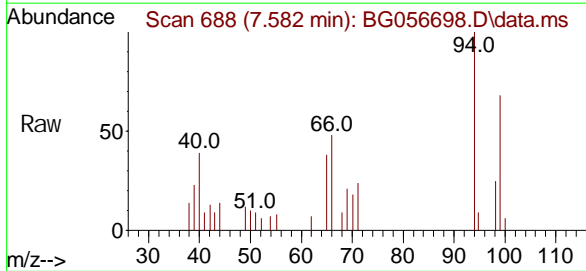
Instrument :
 BNA_G
 ClientSampleId :
 VB-15-241

Tgt Ion	Resp	Lower	Upper
99	146457		
42	20.2	16.8	25.2
71	44.2	33.9	50.9

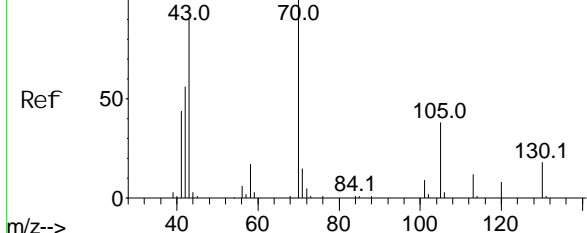


Phenol
 Concen: 2.485 ng
 RT: 7.582 min Scan# 688
 Delta R.T. 0.002 min
 Lab File: BG056698.D
 Acq: 22 Feb 2023 15:13

Tgt Ion	Resp	Lower	Upper
94	3710		
65	38.3	14.2	54.2
66	47.6	27.9	67.9



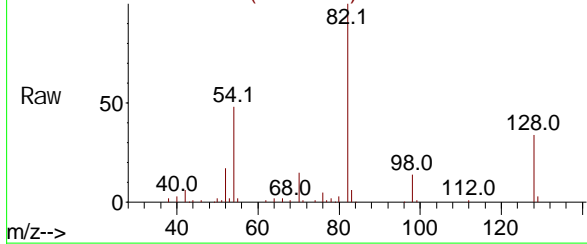
Abundance Scan 1014 (9.246 min): BG056637.D\data.ms (-1069) (-)



n-Nitrosodipropylamine
Concn: 13.059 ng
RT: 9.603 min Scan# 1014
Delta R.T. 0.372 min
Lab File: BG056698.D
Acq: 22 Feb 2023 15:13

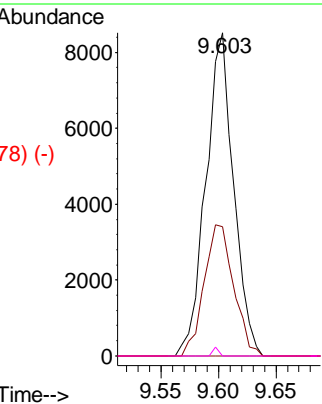
Instrument : BNA_G
ClientSampleId : VB-15-241

Abundance Scan 1032 (9.603 min): BG056698.D\data.ms

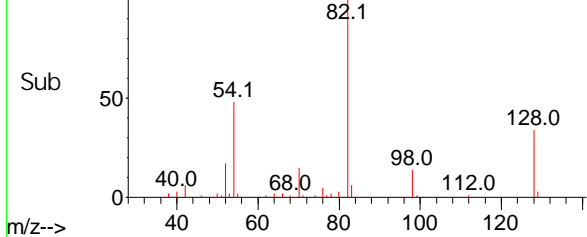


Tgt Ion: 70 Resp: 14268

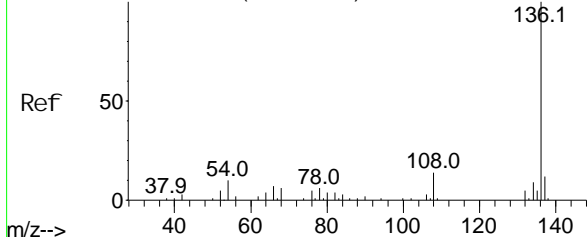
Ion	Ratio	Lower	Upper
70	100		
42	40.0	45.7	68.5#
101	0.0	7.4	11.0#
130	0.0	14.2	21.4#



Abundance Scan 1032 (9.603 min): BG056698.D\data.ms (-878) (-)



Abundance Scan 1360 (11.278 min): BG056637.D\data.ms (-1321) (-)

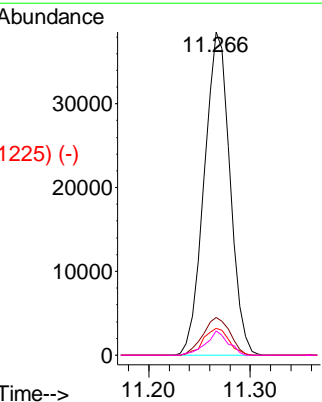
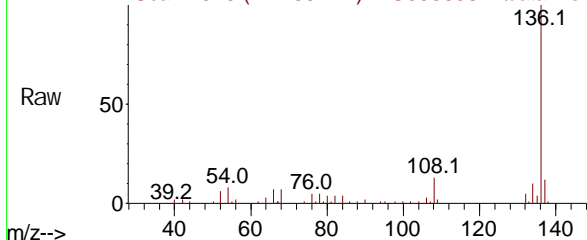


Naphthalene-d8
Concn: 20.000 ng
RT: 11.266 min Scan# 1315
Delta R.T. -0.004 min
Lab File: BG056698.D
Acq: 22 Feb 2023 15:13

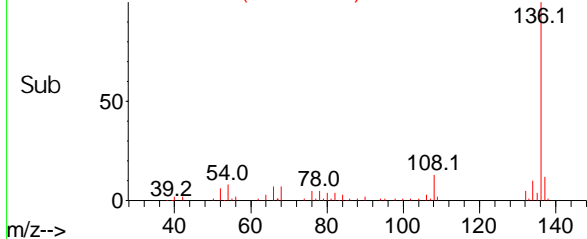
Tgt Ion: 136 Resp: 67766

Ion	Ratio	Lower	Upper
136	100		
137	11.7	9.7	14.5
54	8.2	7.7	11.5
68	7.4	4.8	7.2#

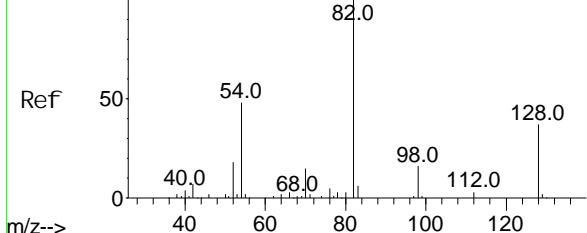
Abundance Scan 1315 (11.266 min): BG056698.D\data.ms



Abundance Scan 1315 (11.266 min): BG056698.D\data.ms (-1225) (-)



Abundance Scan 1077 (9.616 min): BG056637.D\data.ms (-1073)



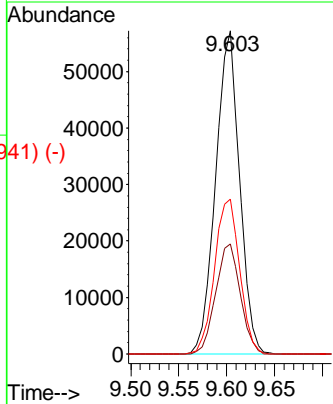
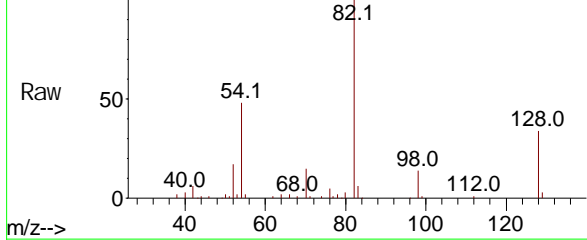
Nitrobenzene-d5
Concen: 74.929 ng
RT: 9.603 min Scan#
Delta R.T. 0.002 min
Lab File: BG056698.D
Acq: 22 Feb 2023 15:13

Instrument :
BNA_G
ClientSampleId :
VB-15-241

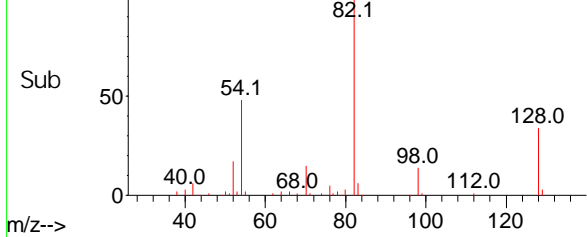
Tgt Ion: 82 Resp: 99170

Ion	Ratio	Lower	Upper
82	100		
128	34.0	29.4	44.2
54	48.0	37.8	56.6

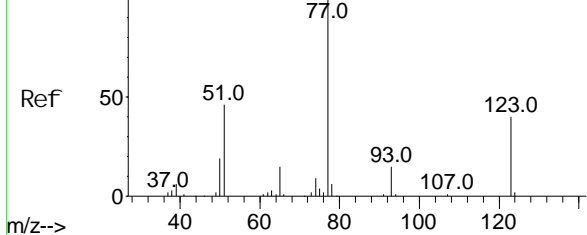
Abundance Scan 1032 (9.603 min): BG056698.D\data.ms



Abundance Scan 1032 (9.603 min): BG056698.D\data.ms (-941) (-)



Abundance Scan 1084 (9.657 min): BG056637.D\data.ms (-1073)

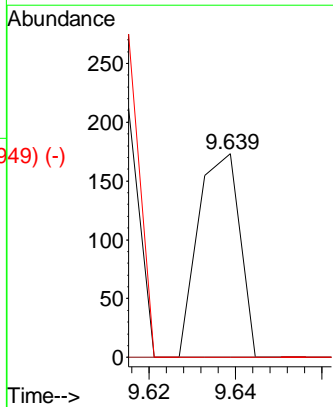
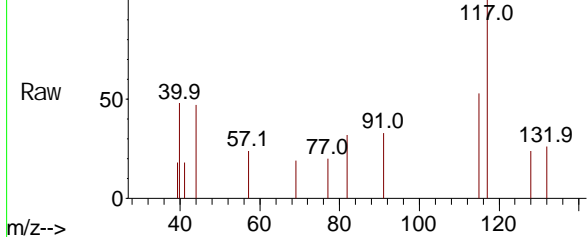


Nitrobenzene
Concen: 2.759 ng
RT: 9.639 min Scan# 1038
Delta R.T. -0.010 min
Lab File: BG056698.D
Acq: 22 Feb 2023 15:13

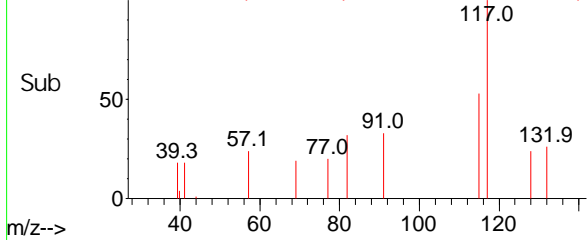
Tgt Ion: 77 Resp: 116

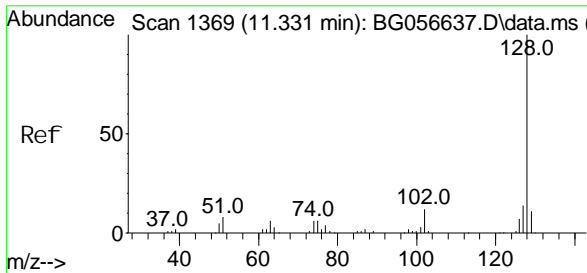
Ion	Ratio	Lower	Upper
77	100		
123	0.0	31.8	47.8#
65	0.0	12.0	18.0#

Abundance Scan 1038 (9.639 min): BG056698.D\data.ms



Abundance Scan 1038 (9.639 min): BG056698.D\data.ms (-949) (-)



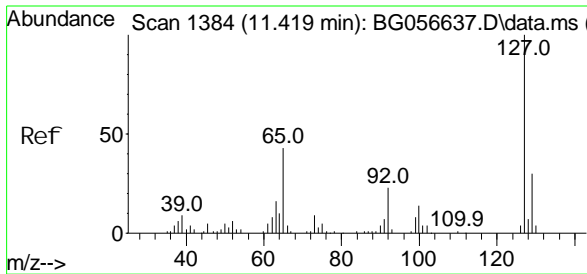
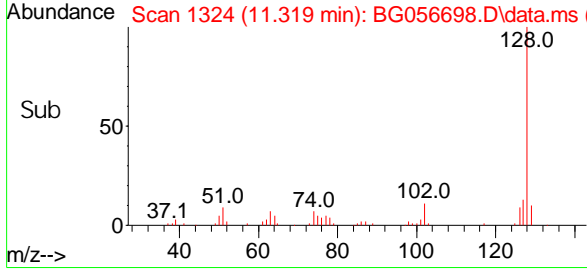
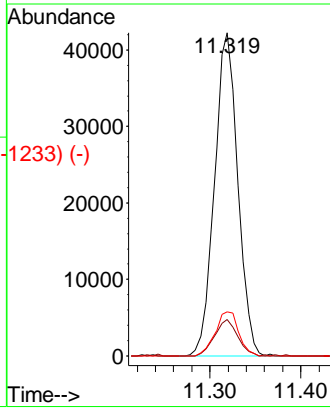
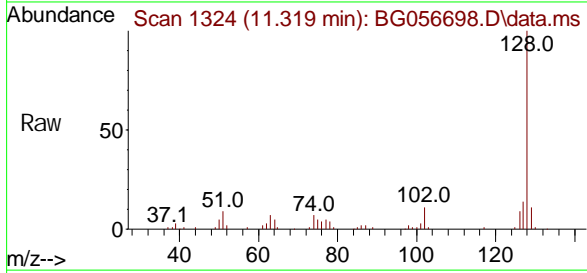


#130 (-)
 Naphthalene
 Concen: 19.999 ng
 RT: 11.319 min Scan#
 Delta R.T. 0.002 min
 Lab File: BG056698.D
 Acq: 22 Feb 2023 15:13

Instrument :
 BNA_G
ClientSampleId :
 VB-15-241

Tgt Ion: 128 Resp: 75112

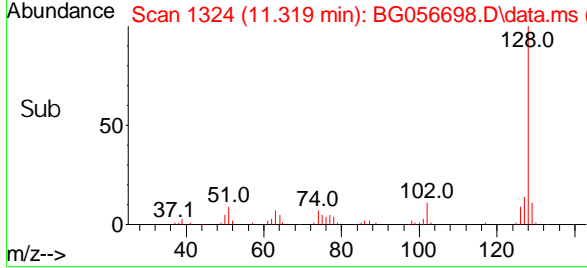
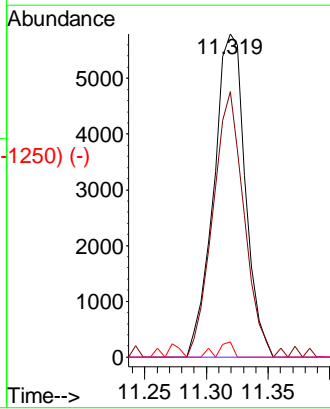
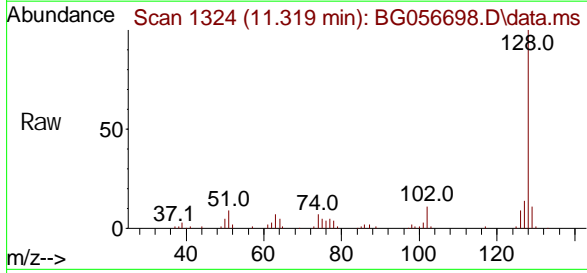
Ion	Ratio	Lower	Upper
128	100		
129	11.3	8.7	13.1
127	13.7	10.9	16.3

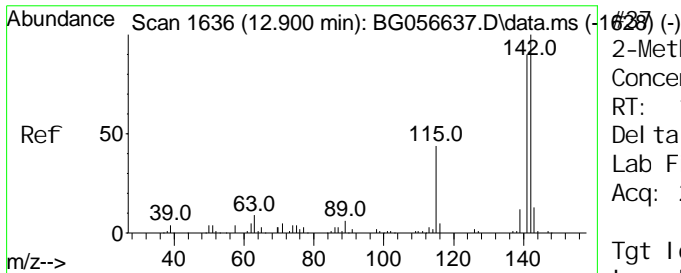


#132 (-)
 4-Chloroaniline
 Concen: 6.045 ng
 RT: 11.319 min Scan# 1324
 Delta R.T. -0.098 min
 Lab File: BG056698.D
 Acq: 22 Feb 2023 15:13

Tgt Ion: 127 Resp: 10372

Ion	Ratio	Lower	Upper
127	100		
129	82.1	24.1	36.1#
65	4.8	34.3	51.5#
92	0.0	18.6	28.0#



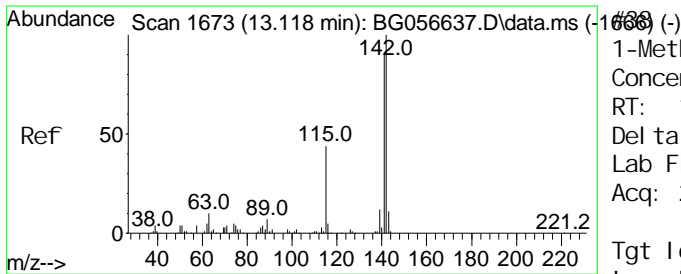
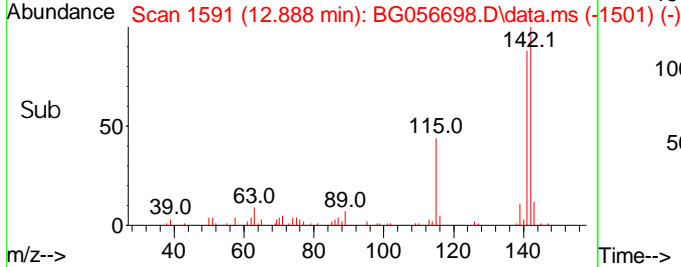
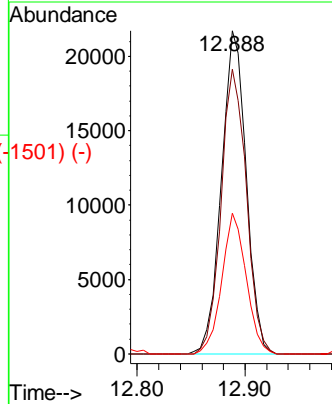
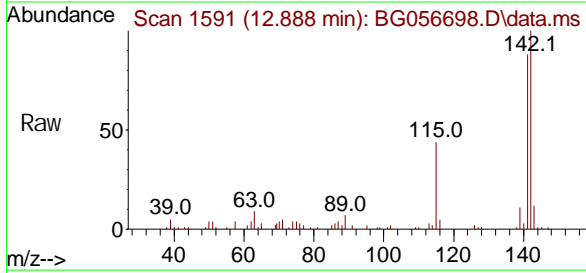


2-Methyl naphthal ene
 Concen: 11.790 ng
 RT: 12.888 min Scan#
 Delta R.T. -0.004 min
 Lab File: BG056698.D
 Acq: 22 Feb 2023 15:13

Instrument :
 BNA_G
 ClientSampleId :
 VB-15-241

Tgt Ion: 142 Resp: 34962

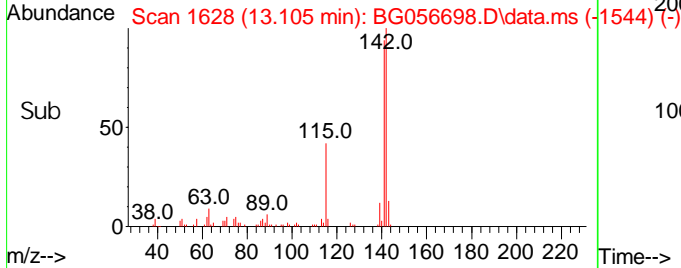
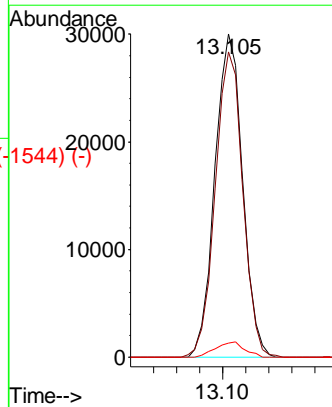
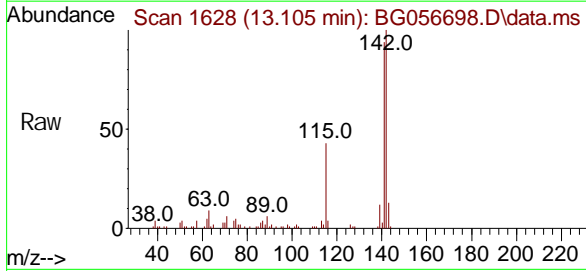
Ion	Ratio	Lower	Upper
142	100		
141	88.2	71.9	107.9
115	43.7	35.1	52.7



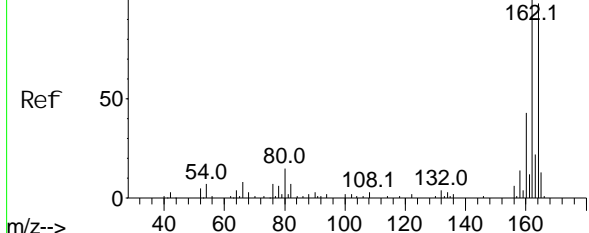
1-Methyl naphthal ene
 Concen: 18.120 ng
 RT: 13.105 min Scan# 1628
 Delta R.T. -0.004 min
 Lab File: BG056698.D
 Acq: 22 Feb 2023 15:13

Tgt Ion: 142 Resp: 50140

Ion	Ratio	Lower	Upper
142	100		
141	94.5	72.7	109.1
116	4.3	4.2	6.4



Abundance Scan 2001 (15.045 min): BG056637.D\data.ms (-1734) (-)

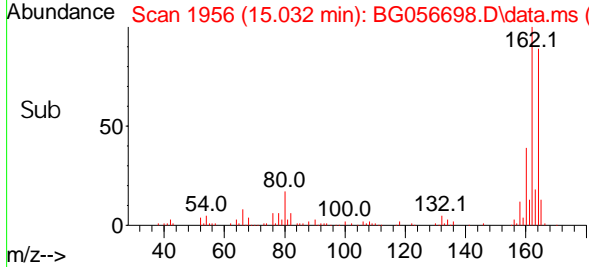
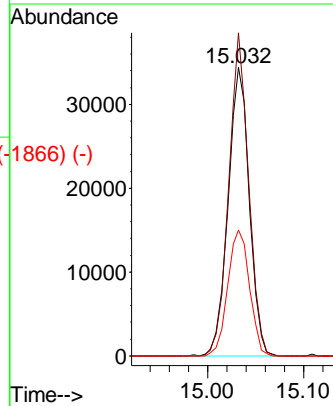
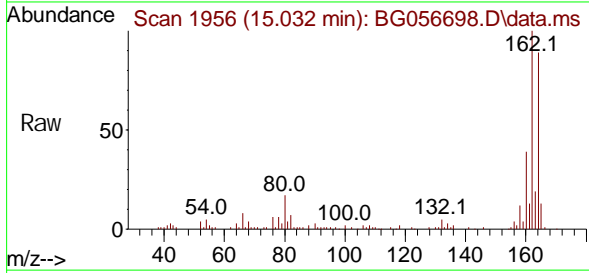


Acenaphthene-d10
Concen: 20.000 ng
RT: 15.032 min Scan#
Delta R.T. -0.004 min
Lab File: BG056698.D
Acq: 22 Feb 2023 15:13

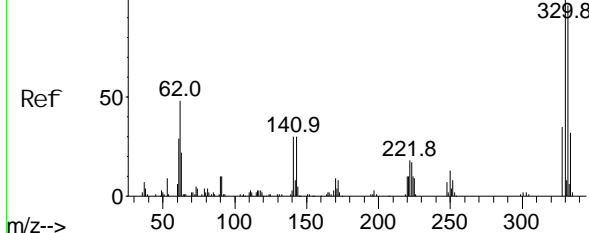
Instrument :
BNA_G
ClientSampleId :
VB-15-241

Tgt Ion: 164 Resp: 52711

Ion	Ratio	Lower	Upper
164	100		
162	112.1	81.3	121.9
160	43.8	35.2	52.8



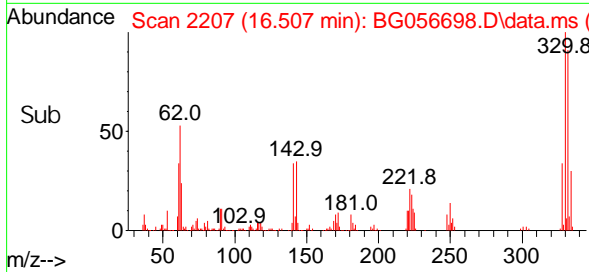
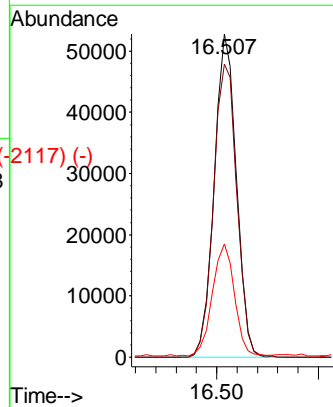
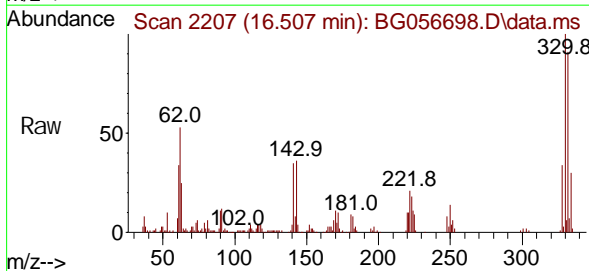
Abundance Scan 2252 (16.519 min): BG056637.D\data.ms (-2242) (-)



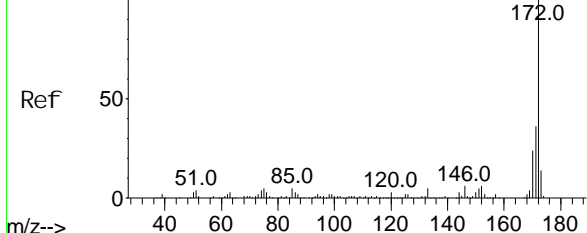
2,4,6-Tri bromophenol
Concen: 110.391 ng
RT: 16.507 min Scan# 2207
Delta R.T. -0.004 min
Lab File: BG056698.D
Acq: 22 Feb 2023 15:13

Tgt Ion: 330 Resp: 79667

Ion	Ratio	Lower	Upper
330	100		
332	95.4	75.7	113.5
141	34.3	24.6	37.0



Abundance Scan 1768 (13.676 min): BG056637.D\data.ms (-1745) (-)

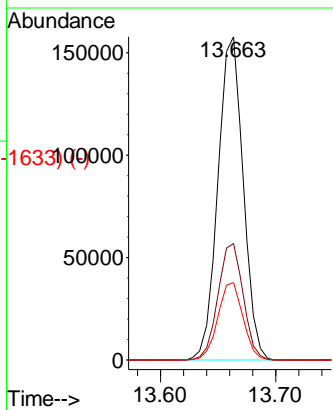
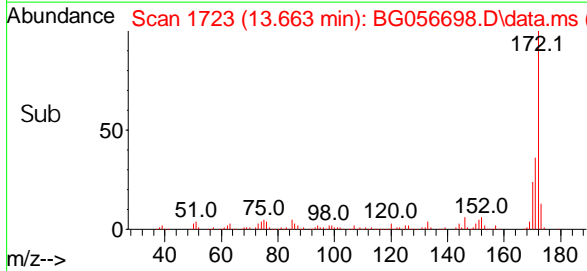
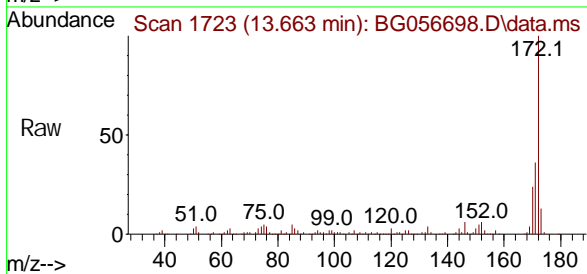


2-Fluorophenyl
Concn: 61.357 ng
RT: 13.663 min Scan#
Delta R.T. -0.004 min
Lab File: BG056698.D
Acq: 22 Feb 2023 15:13

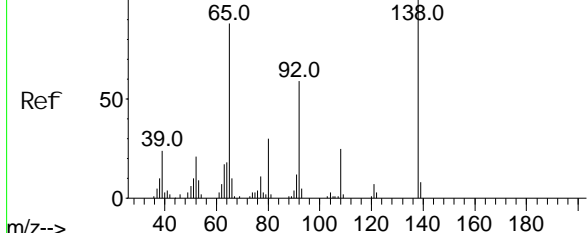
Instrument :
BNA_G
ClientSampleId :
VB-15-241

Tgt Ion: 172 Resp: 241525

Ion	Ratio	Lower	Upper
172	100		
171	36.1	28.6	43.0
170	24.0	19.4	29.0



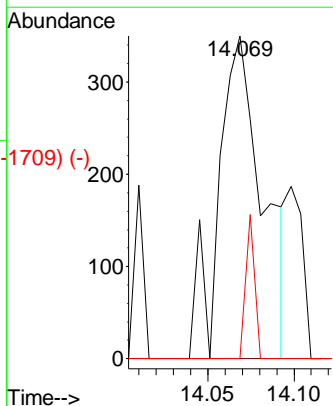
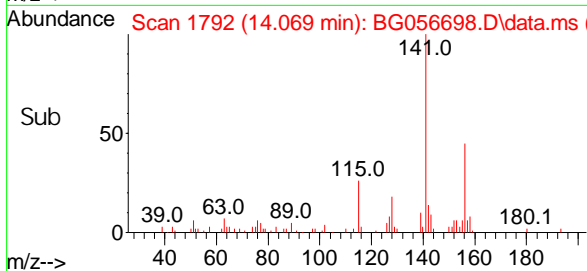
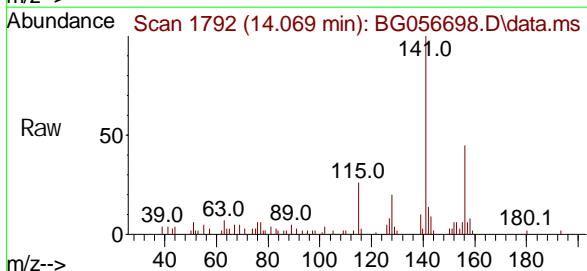
Abundance Scan 1843 (14.116 min): BG056637.D\data.ms (-1746) (-)

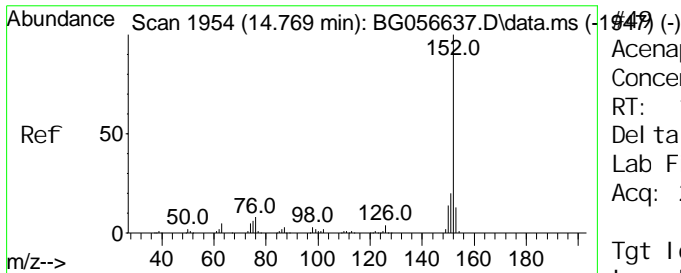


2-Nitroaniline
Concn: 5.853 ng
RT: 14.069 min Scan# 1792
Delta R.T. -0.045 min
Lab File: BG056698.D
Acq: 22 Feb 2023 15:13

Tgt Ion: 65 Resp: 627

Ion	Ratio	Lower	Upper
65	100		
92	0.0	53.8	80.6#
138	0.0	90.6	135.8#

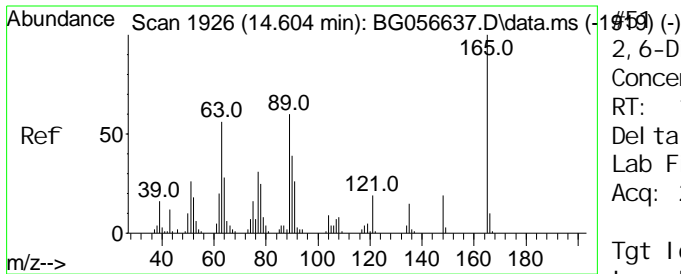
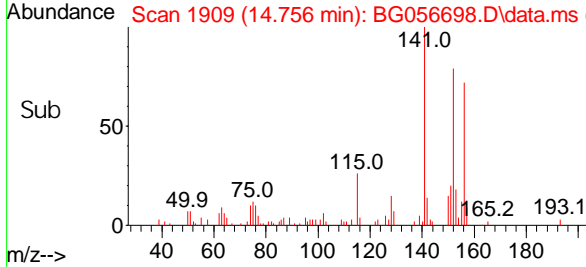
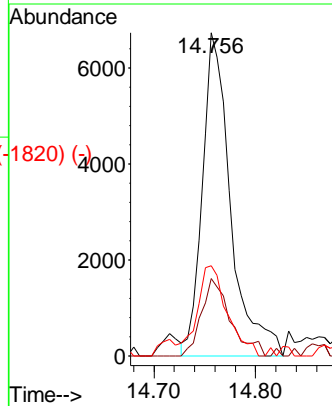
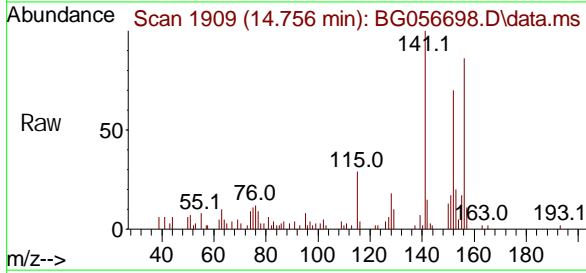




Acenaphthyl ene
 Concen: 2.533 ng
 RT: 14.756 min Scan#
 Delta R.T. -0.010 min
 Lab File: BG056698.D
 Acq: 22 Feb 2023 15:13

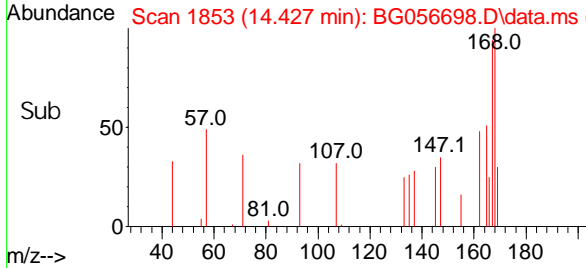
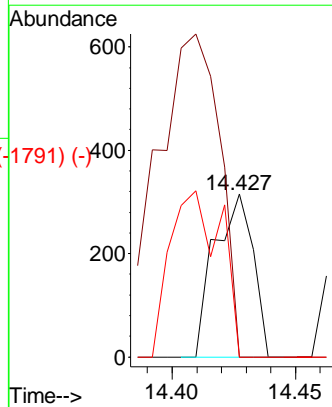
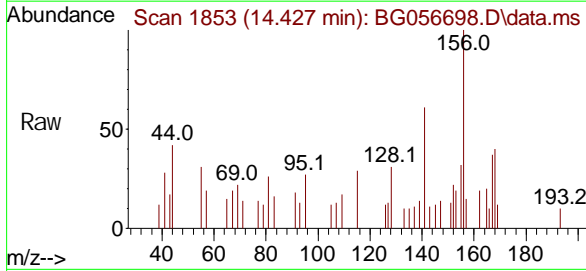
Instrument :
 BNA_G
 ClientSampleId :
 VB-15-241

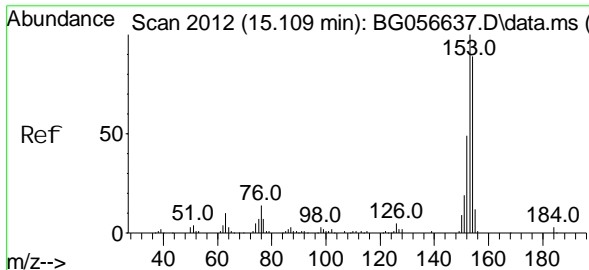
Tgt Ion	Resp	Lower	Upper
152	100		
151	23.9	15.6	23.4#
153	28.0	10.3	15.5#



2,6-Di nitro tolu ene
 Concen: 3.005 ng
 RT: 14.427 min Scan# 1853
 Delta R.T. -0.169 min
 Lab File: BG056698.D
 Acq: 22 Feb 2023 15:13

Tgt Ion	Resp	Lower	Upper
165	100		
63	0.0	45.8	68.8#
89	0.0	48.2	72.2#

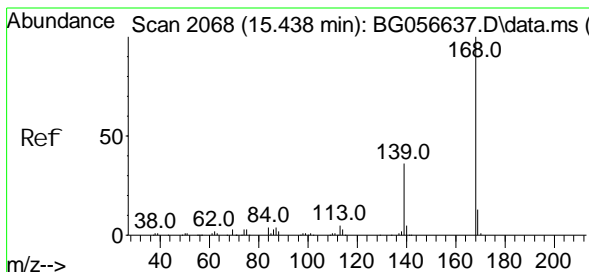
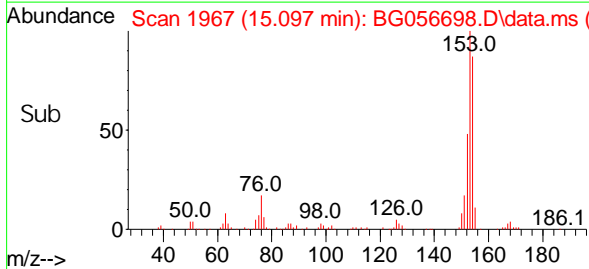
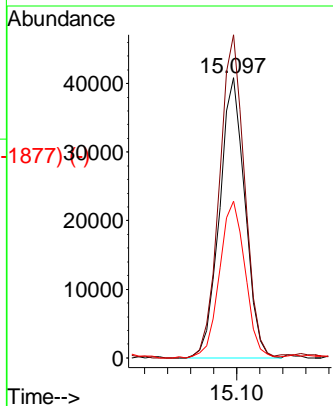
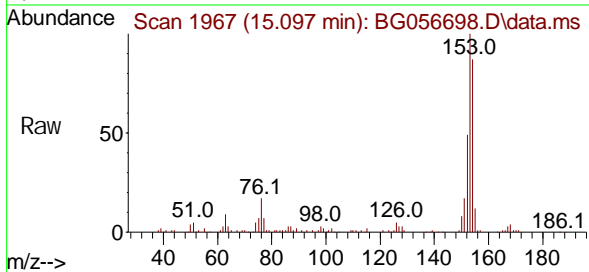




Scan 2012 (15.109 min): BG056637.D\data.ms (-2055) (-)
 Acenaphthene
 Concen: 19.831 ng
 RT: 15.097 min Scan#
 Delta R.T. -0.004 min
 Lab File: BG056698.D
 Acq: 22 Feb 2023 15:13

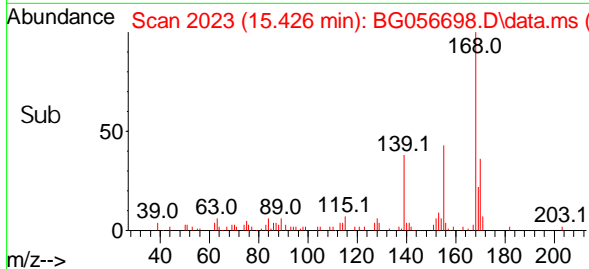
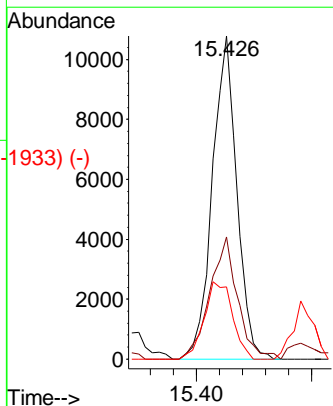
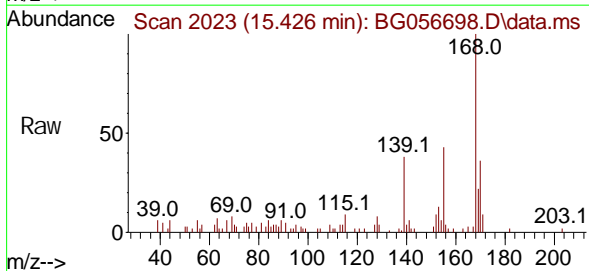
Instrument :
 BNA_G
 ClientSampleId :
 VB-15-241

Tgt Ion: 154 Resp: 62805
 Ion Ratio Lower Upper
 154 100
 153 115.4 89.5 134.3
 152 56.0 43.7 65.5

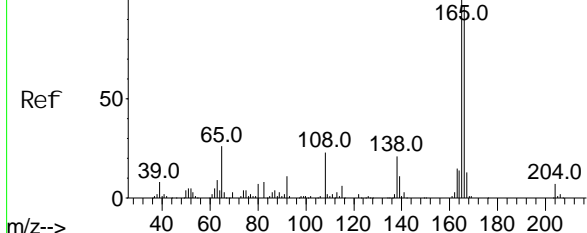


Scan 2068 (15.438 min): BG056637.D\data.ms (-2055) (-)
 Di benzofuran
 Concen: 2.985 ng
 RT: 15.426 min Scan# 2023
 Delta R.T. -0.004 min
 Lab File: BG056698.D
 Acq: 22 Feb 2023 15:13

Tgt Ion: 168 Resp: 15970
 Ion Ratio Lower Upper
 168 100
 139 37.8 29.0 43.6
 169 22.3 10.7 16.1#



Abundance Scan 2178 (16.085 min): BG056637.D\data.ms (-2#50) (-)



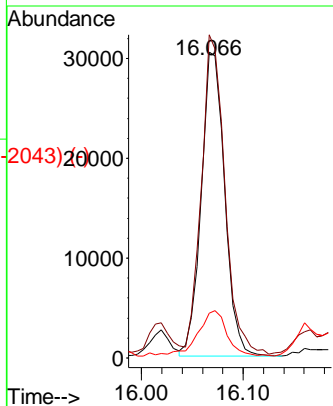
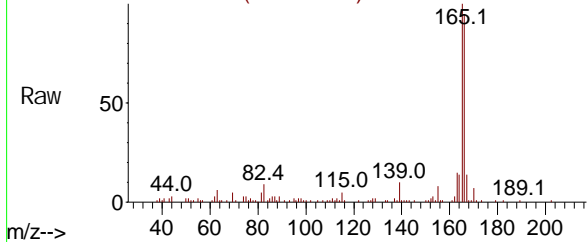
Fluorene
Concen: 11.529 ng
RT: 16.066 min Scan# 2132
Delta R.T. -0.010 min
Lab File: BG056698.D
Acq: 22 Feb 2023 15:13

Instrument : BNA_G
ClientSampleId : VB-15-241

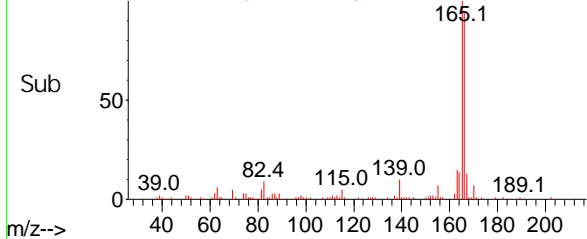
Tgt Ion: 166 Resp: 48772

Ion	Ratio	Lower	Upper
166	100		
165	105.8	82.9	124.3
167	14.7	11.1	16.7

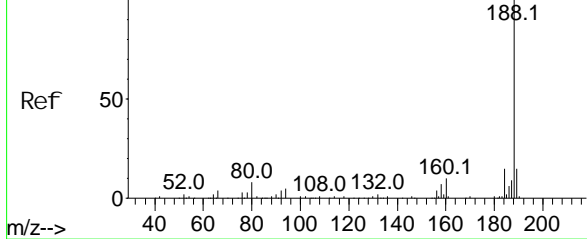
Abundance Scan 2132 (16.066 min): BG056698.D\data.ms



Abundance Scan 2132 (16.066 min): BG056698.D\data.ms (-2043) (-)



Abundance Scan 2466 (17.777 min): BG056637.D\data.ms (-2#50) (-)

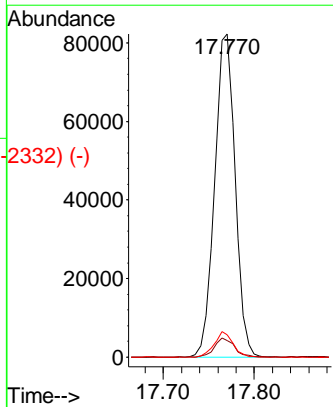
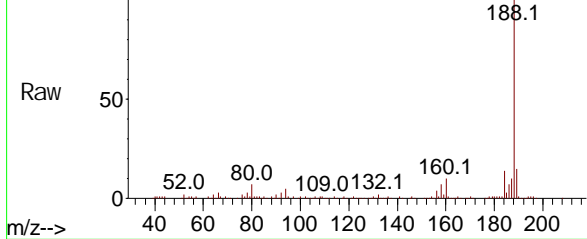


Phenanthrene-d10
Concen: 20.000 ng
RT: 17.770 min Scan# 2422
Delta R.T. -0.004 min
Lab File: BG056698.D
Acq: 22 Feb 2023 15:13

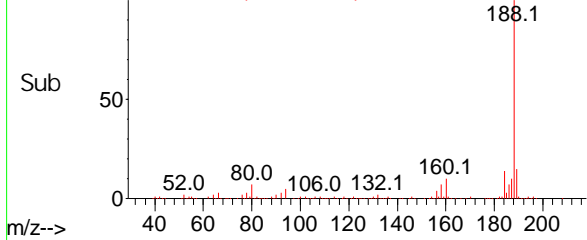
Tgt Ion: 188 Resp: 128779

Ion	Ratio	Lower	Upper
188	100		
94	5.1	4.0	6.0
80	7.0	6.3	9.5

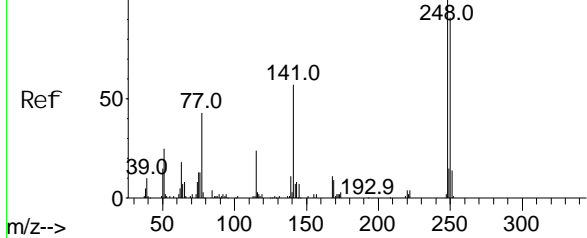
Abundance Scan 2422 (17.770 min): BG056698.D\data.ms



Abundance Scan 2422 (17.770 min): BG056698.D\data.ms (-2332) (-)



Abundance Scan 2327 (16.960 min): BG056637.D\data.ms (-2327) (-)



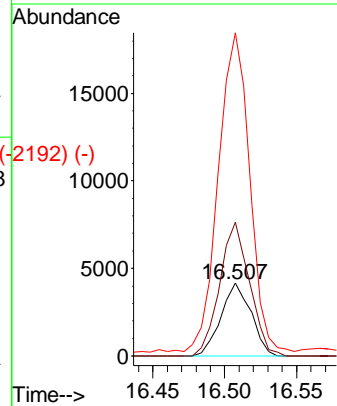
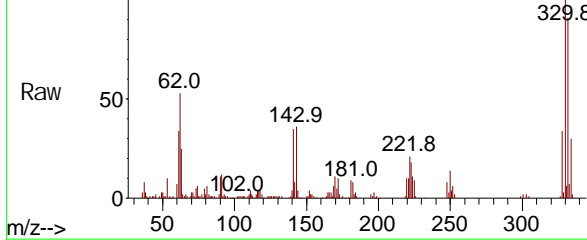
4-Bromophenyl -phenyl ether
Concen: 3.636 ng
RT: 16.507 min Scan# 2192
Delta R.T. -0.445 min
Lab File: BG056698.D
Acq: 22 Feb 2023 15:13

Instrument : BNA_G
ClientSampleId : VB-15-241

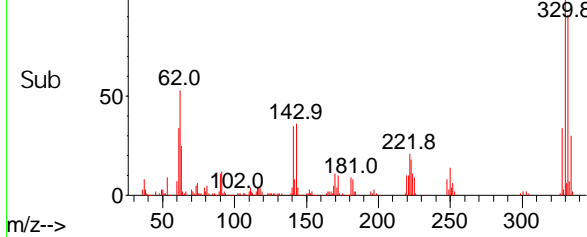
Tgt Ion: 248 Resp: 6011

Ion	Ratio	Lower	Upper
248	100		
250	183.9	73.0	109.6#
141	444.5	45.6	68.4#

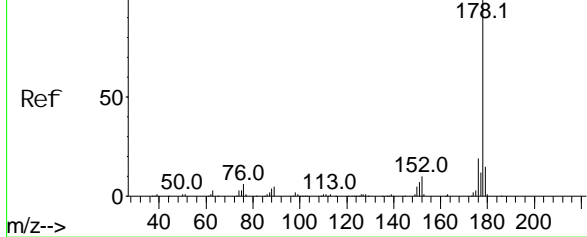
Abundance Scan 2207 (16.507 min): BG056698.D\data.ms



Abundance Scan 2207 (16.507 min): BG056698.D\data.ms (-2192) (-)



Abundance Scan 2474 (17.824 min): BG056637.D\data.ms (-2474) (-)

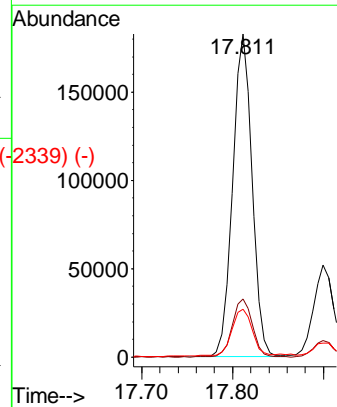
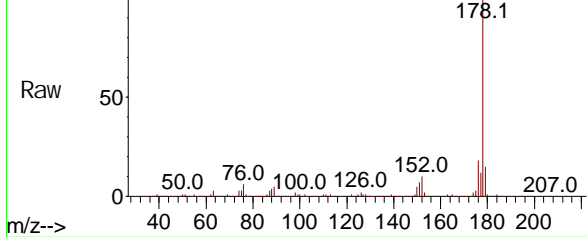


Phenanthrene
Concen: 38.587 ng
RT: 17.811 min Scan# 2429
Delta R.T. -0.004 min
Lab File: BG056698.D
Acq: 22 Feb 2023 15:13

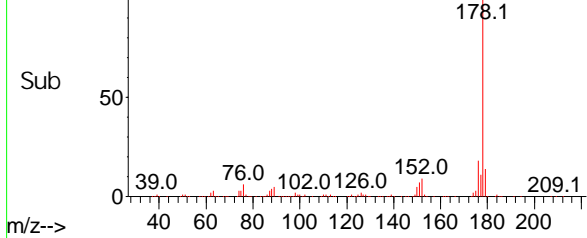
Tgt Ion: 178 Resp: 270353

Ion	Ratio	Lower	Upper
178	100		
176	18.0	15.4	23.2
179	14.9	12.2	18.4

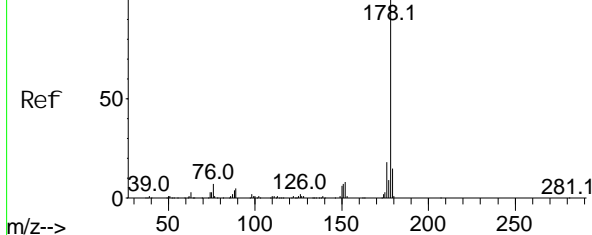
Abundance Scan 2429 (17.811 min): BG056698.D\data.ms



Abundance Scan 2429 (17.811 min): BG056698.D\data.ms (-2339) (-)



Abundance Scan 2489 (17.912 min): BG056637.D\data.ms (-2489) (-)



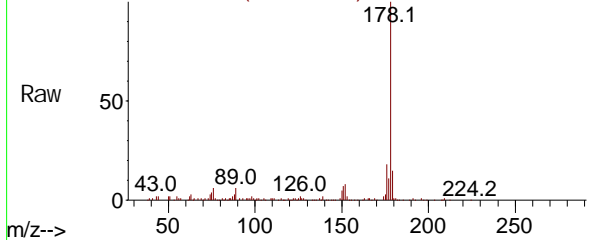
Anthracene
Concen: 10.704 ng
RT: 17.900 min Scan# 2766
Delta R.T. -0.004 min
Lab File: BG056698.D
Acq: 22 Feb 2023 15:13

Instrument : BNA_G
ClientSampleId : VB-15-241

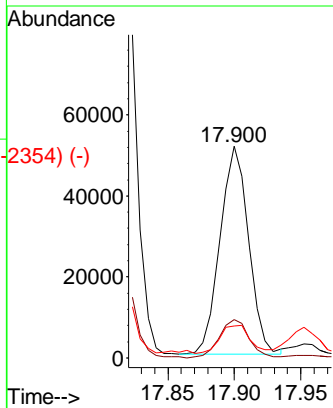
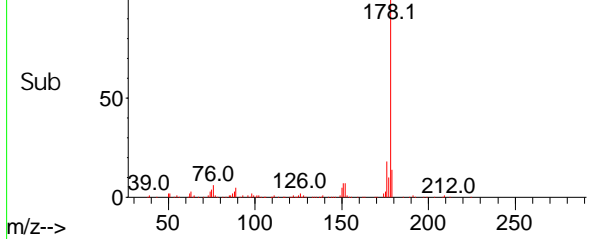
Tgt Ion: 178 Resp: 76741

Ion	Ratio	Lower	Upper
178	100		
176	18.2	14.3	21.5
179	15.1	12.2	18.4

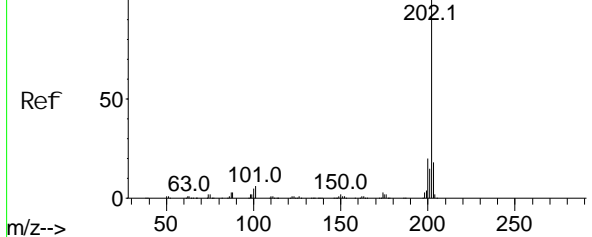
Abundance Scan 2444 (17.900 min): BG056698.D\data.ms



Abundance Scan 2444 (17.900 min): BG056698.D\data.ms (-2354) (-)



Abundance Scan 2811 (19.804 min): BG056637.D\data.ms (-2811) (-)

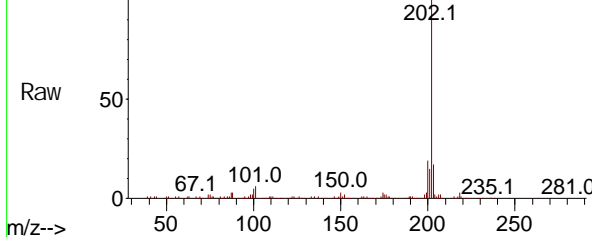


Fluoranthene
Concen: 15.037 ng
RT: 19.792 min Scan# 2766
Delta R.T. -0.004 min
Lab File: BG056698.D
Acq: 22 Feb 2023 15:13

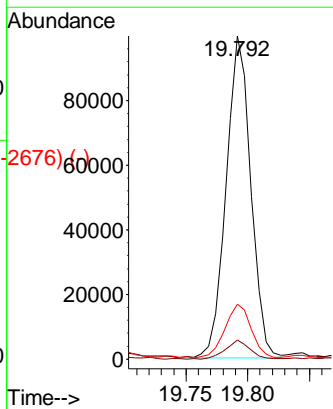
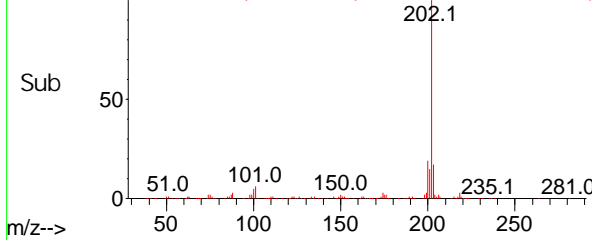
Tgt Ion: 202 Resp: 139013

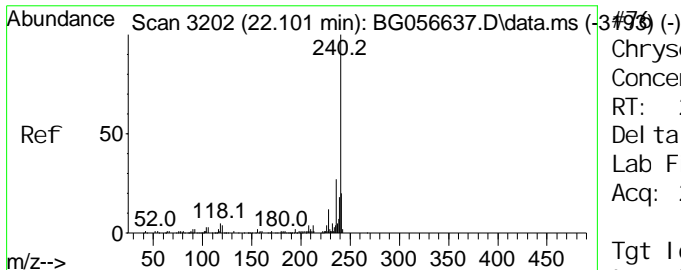
Ion	Ratio	Lower	Upper
202	100		
101	6.0	0.0	25.8
203	17.0	0.0	37.6

Abundance Scan 2766 (19.792 min): BG056698.D\data.ms



Abundance Scan 2766 (19.792 min): BG056698.D\data.ms (-2676) (-)

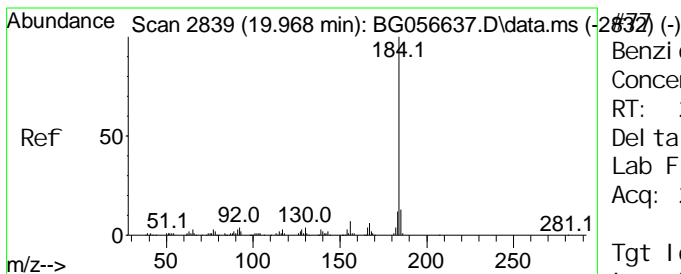
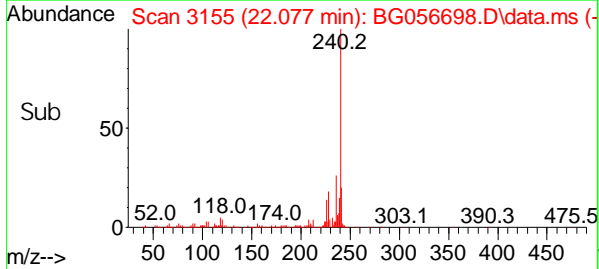
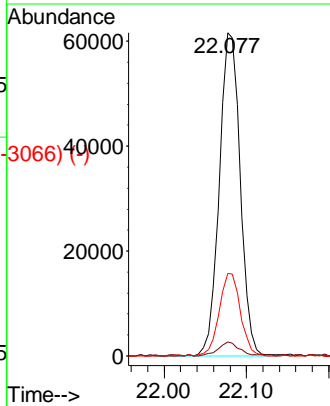
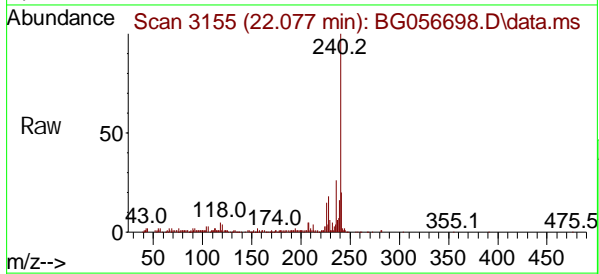




Chrysene-d12
 Concen: 20.000 ng
 RT: 22.077 min Scan# 3155
 Delta R.T. -0.010 min
 Lab File: BG056698.D
 Acq: 22 Feb 2023 15:13

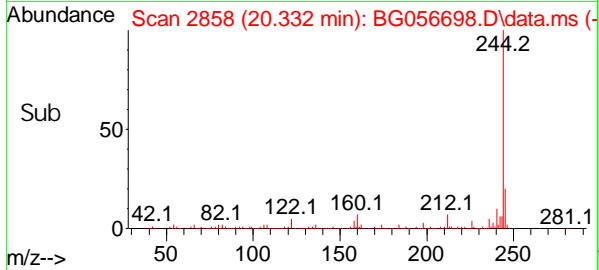
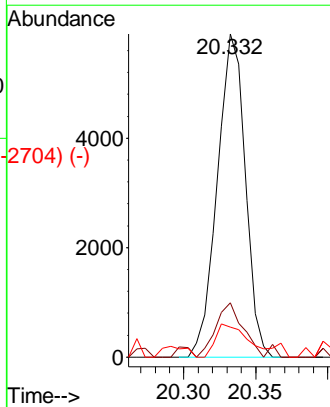
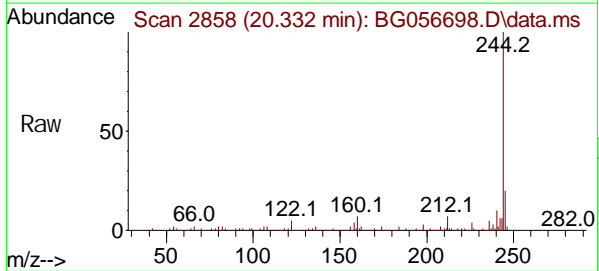
Instrument :
 BNA_G
 ClientSampleId :
 VB-15-241

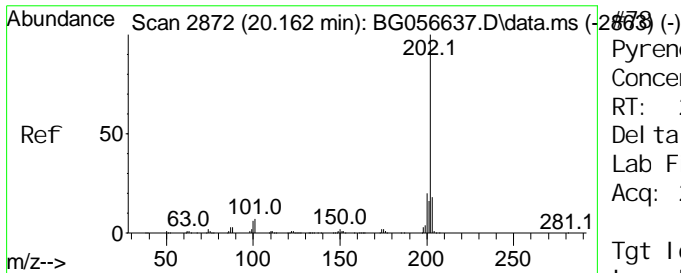
Tgt Ion	Resp	Lower	Upper
240	109314		
120	4.4	3.5	5.3
236	25.5	21.5	32.3



Benzi di ne
 Concen: 3.047 ng
 RT: 20.332 min Scan# 2858
 Delta R.T. 0.372 min
 Lab File: BG056698.D
 Acq: 22 Feb 2023 15:13

Tgt Ion	Resp	Lower	Upper
184	7966		
185	16.7	10.6	15.8#
183	9.3	9.4	14.0#

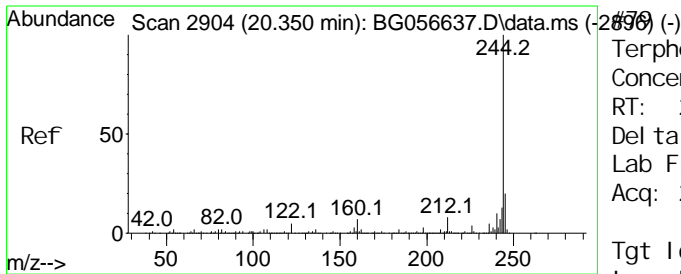
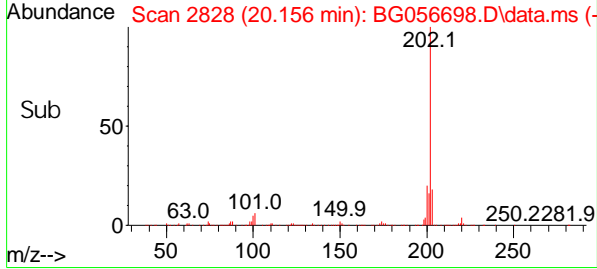
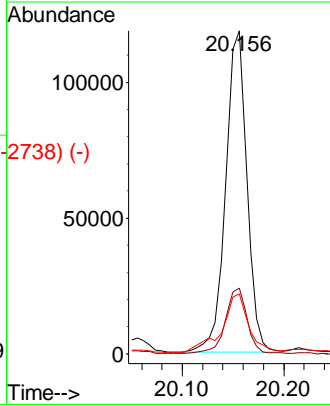
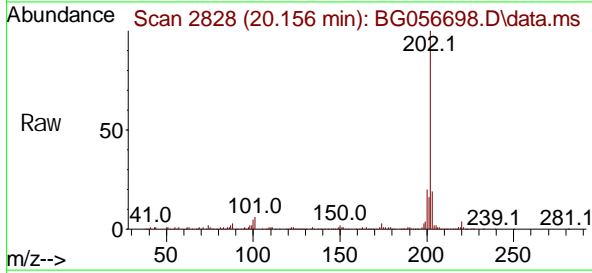




Pyrene
 Concen: 20.868 ng
 RT: 20.156 min Scan# 2872
 Delta R.T. -0.004 min
 Lab File: BG056698.D
 Acq: 22 Feb 2023 15:13

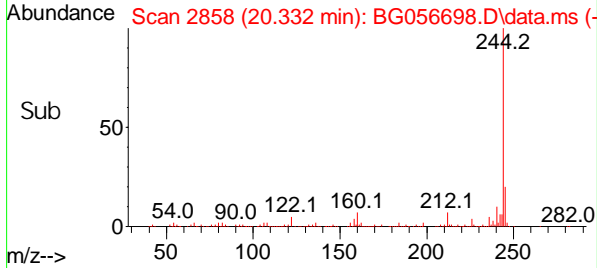
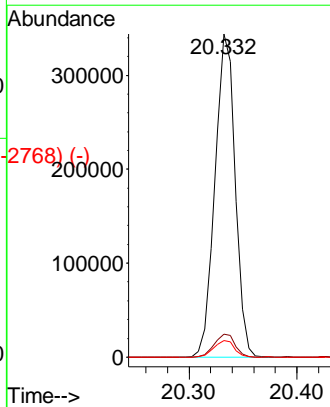
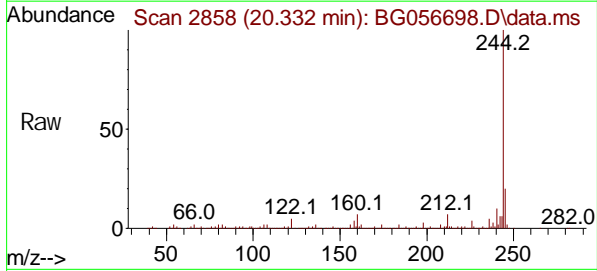
Instrument :
 BNA_G
ClientSampleId :
 VB-15-241

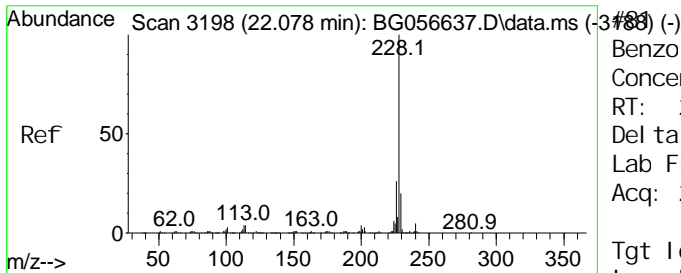
Tgt Ion	Resp	Lower	Upper
202	172277		
200	20.4	15.8	23.8
203	18.6	14.2	21.4



Terphenyl-d14
 Concen: 67.616 ng
 RT: 20.332 min Scan# 2858
 Delta R.T. -0.004 min
 Lab File: BG056698.D
 Acq: 22 Feb 2023 15:13

Tgt Ion	Resp	Lower	Upper
244	451764		
212	7.1	6.0	9.0
122	5.2	3.8	5.8

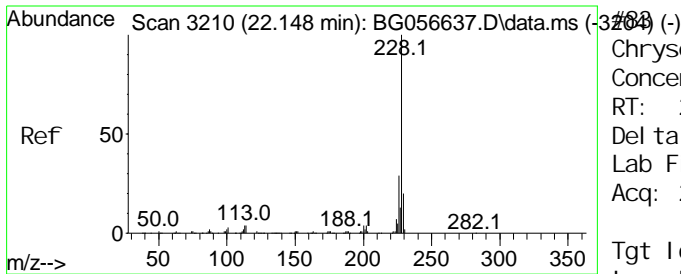
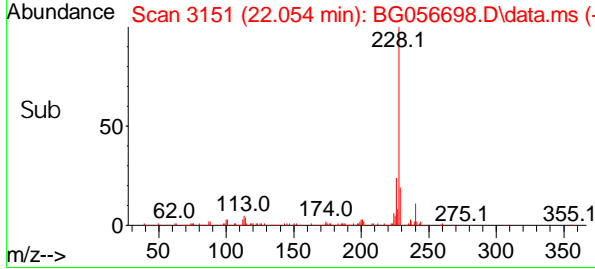
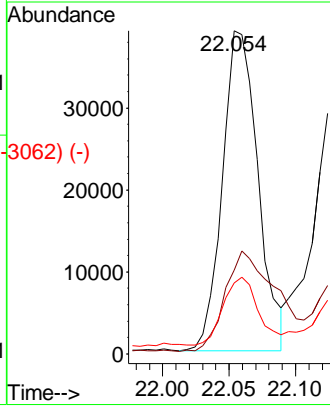
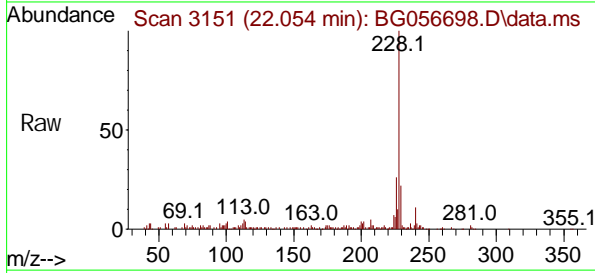




Benzo(a)anthracene
 Concen: 8.933 ng
 RT: 22.054 min Scan# 3151
 Delta R.T. -0.010 min
 Lab File: BG056698.D
 Acq: 22 Feb 2023 15:13

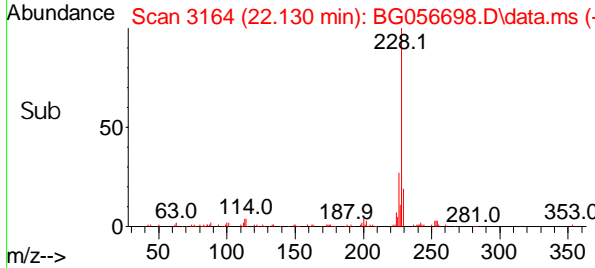
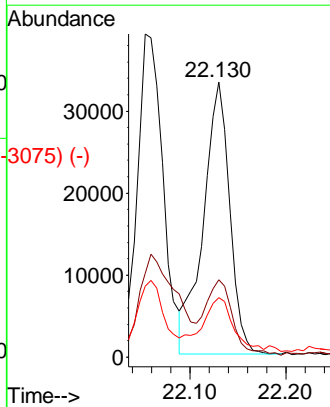
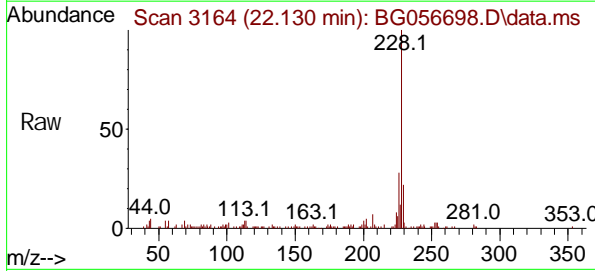
Instrument : BNA_G
 ClientSampleId : VB-15-241

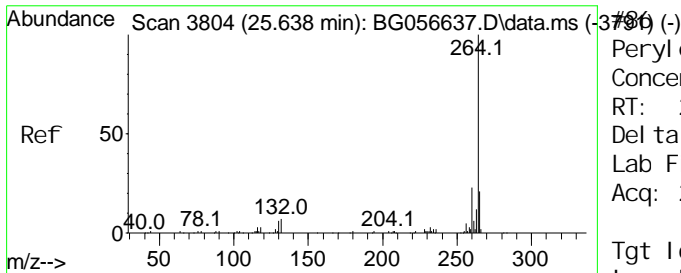
Tgt Ion	Resp	Lower	Upper
228	100		
226	25.9	20.4	30.6
229	22.0	16.0	24.0



Chrysene
 Concen: 8.337 ng
 RT: 22.130 min Scan# 3164
 Delta R.T. -0.010 min
 Lab File: BG056698.D
 Acq: 22 Feb 2023 15:13

Tgt Ion	Resp	Lower	Upper
228	100		
226	28.1	23.0	34.6
229	21.6	15.8	23.8



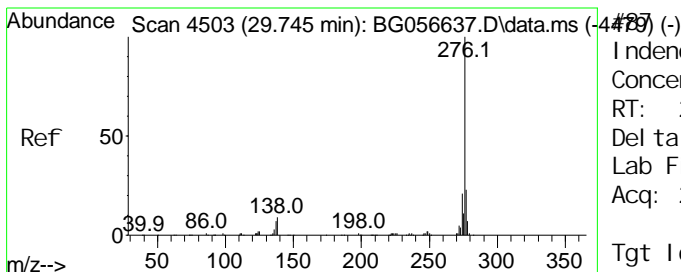
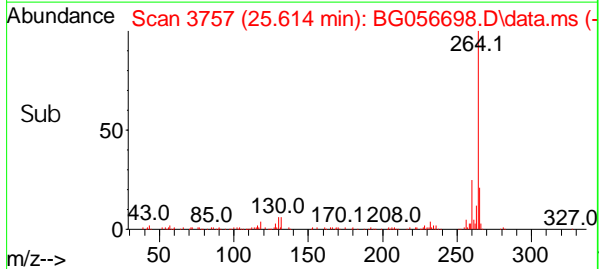
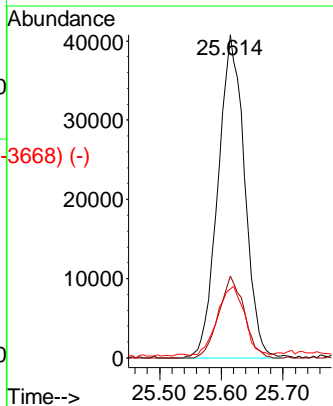
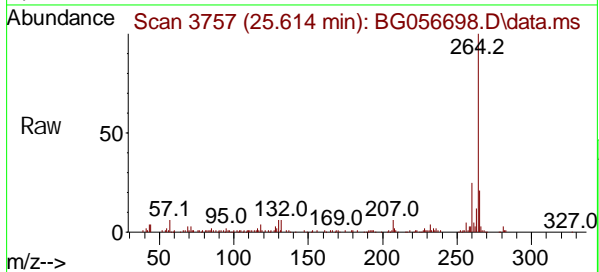


Peryl ene-d12
 Concen: 20.000 ng
 RT: 25.614 min Scan# 4449
 Delta R.T. -0.010 min
 Lab File: BG056698.D
 Acq: 22 Feb 2023 15:13

Instrument :
 BNA_G
ClientSampleId :
 VB-15-241

Tgt Ion: 264 Resp: 121964
 Ion Ratio Lower Upper

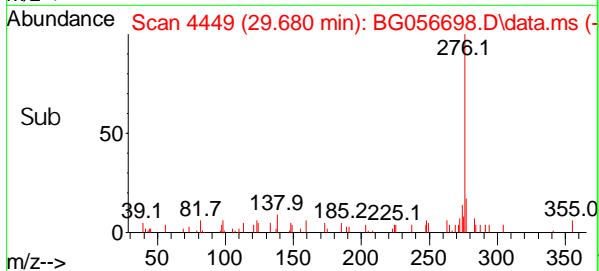
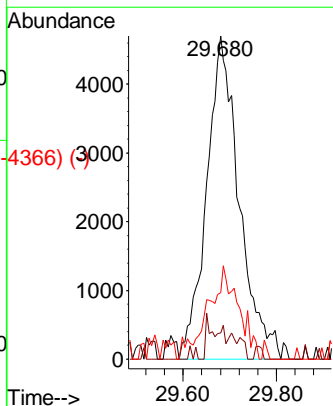
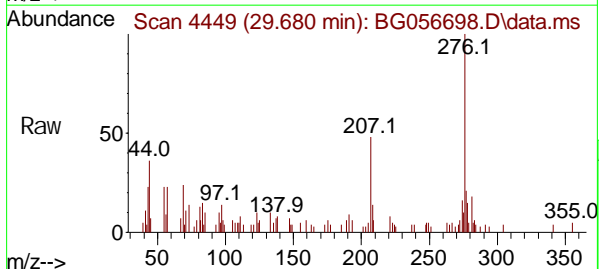
264	100		
260	25.4	18.6	27.8
265	21.3	17.0	25.4

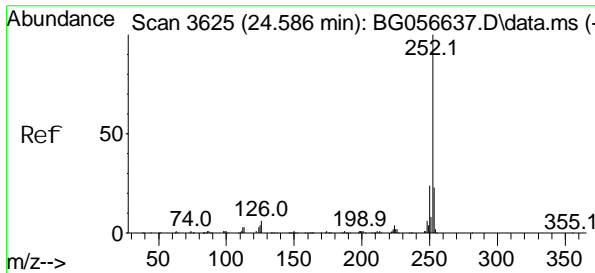


Indeno(1, 2, 3-cd)pyrene
 Concen: 2.380 ng
 RT: 29.680 min Scan# 4449
 Delta R.T. -0.045 min
 Lab File: BG056698.D
 Acq: 22 Feb 2023 15:13

Tgt Ion: 276 Resp: 22736
 Ion Ratio Lower Upper

276	100		
138	0.0	3.8	5.8#
277	17.6	20.3	30.5#



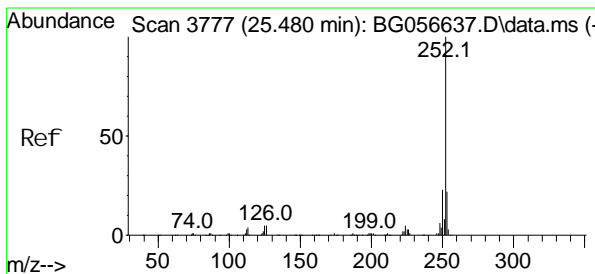
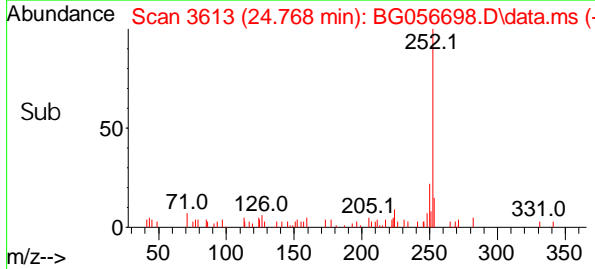
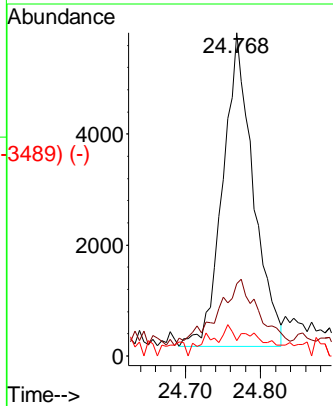
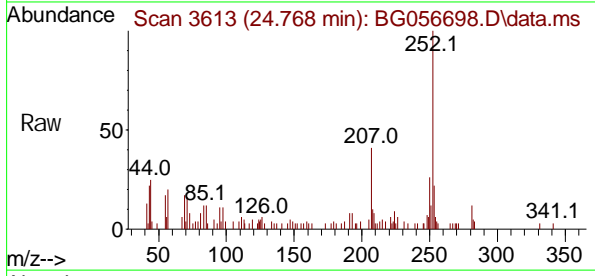


Scan 3625 (24.586 min): BG056637.D\data.ms (-3689) (-)
 Benzo(k)fluoranthene
 Concen: 2.021 ng
 RT: 24.768 min Scan# 3625
 Delta R.T. 0.196 min
 Lab File: BG056698.D
 Acq: 22 Feb 2023 15:13

Instrument :
 BNA_G
ClientSampleId :
 VB-15-241

Tgt Ion: 252 Resp: 15838

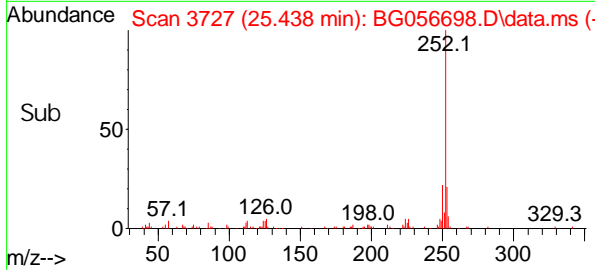
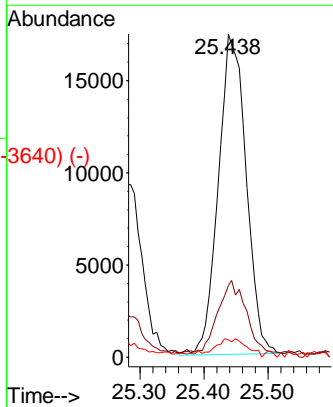
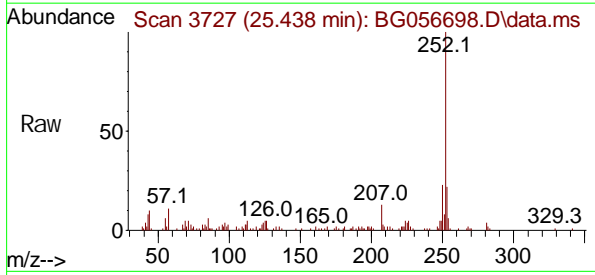
Ion	Ratio	Lower	Upper
252	100		
253	22.4	18.5	27.7
125	4.7	3.4	5.0

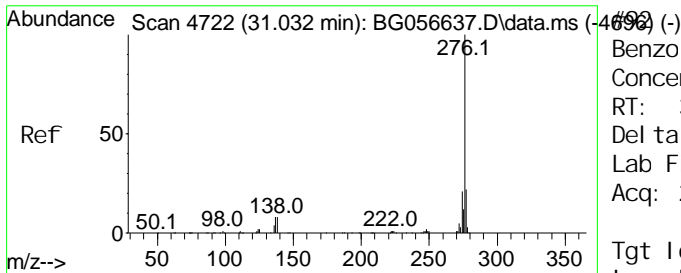


Scan 3777 (25.480 min): BG056637.D\data.ms (-3790) (-)
 Benzo(a)pyrene
 Concen: 6.856 ng
 RT: 25.438 min Scan# 3727
 Delta R.T. -0.022 min
 Lab File: BG056698.D
 Acq: 22 Feb 2023 15:13

Tgt Ion: 252 Resp: 52511

Ion	Ratio	Lower	Upper
252	100		
253	22.2	17.9	26.9
125	5.3	4.0	6.0





Benzo(g, h, i)perylene
 Concen: 2.506 ng
 RT: 30.973 min Scan# 4669
 Delta R.T. -0.033 min
 Lab File: BG056698.D
 Acq: 22 Feb 2023 15:13

Instrument :
 BNA_G
 ClientSampleId :
 VB-15-241

Tgt Ion: 276 Resp: 19374

Ion	Ratio	Lower	Upper
276	100		
277	23.1	17.5	26.3
138	7.6	6.4	9.6

