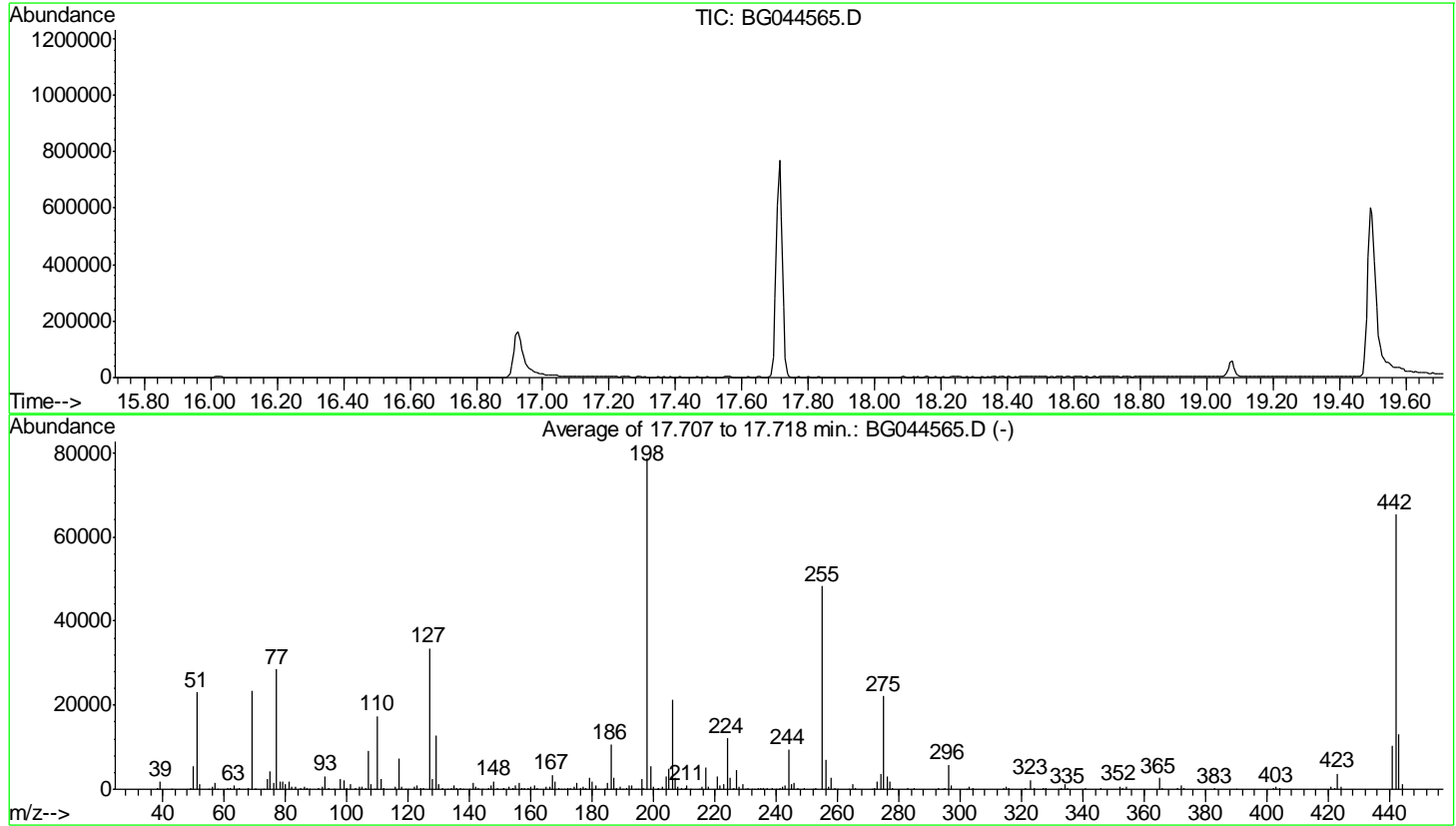


Data Path : Z:\SVOASRV\HPCHEM1\BNA G\DATA\BG022420\  
 Data File : BG044565.D  
 Acq On : 24 Feb 2020 10:38  
 Operator : CG/JU  
 Sample : DFTPP  
 Misc :  
 ALS Vial : 1 Sample Multiplier: 1

Instrument :  
 BNA\_G  
 ClientSampleId :  
 DFTPP

Integration File: rteint.p

Method : Z:\SVOASRV\HPCHEM1\BNA\_G\METHODS\8270-BG022420.M  
 Title : ASP BNA STANDARDS FOR 5 POINT CALIBRATION  
 Last Update : Mon Feb 24 16:11:23 2020



AutoFind: Scans 2488, 2489, 2490; Background Corrected with Scan 2482

| Target Mass | Rel. to Mass | Lower Limit% | Upper Limit% | Rel. Abn% | Raw Abn | Result Pass/Fail |
|-------------|--------------|--------------|--------------|-----------|---------|------------------|
| 51          | 198          | 10           | 80           | 29.3      | 23077   | PASS             |
| 68          | 69           | 0.00         | 2            | 1.3       | 305     | PASS             |
| 69          | 198          | 0.00         | 100          | 29.9      | 23528   | PASS             |
| 70          | 69           | 0.00         | 2            | 0.3       | 63      | PASS             |
| 127         | 198          | 10           | 80           | 42.6      | 33490   | PASS             |
| 197         | 198          | 0.00         | 2            | 0.4       | 280     | PASS             |
| 198         | 198          | 100          | 100          | 100.0     | 78706   | PASS             |
| 199         | 198          | 5            | 9            | 6.9       | 5424    | PASS             |
| 275         | 198          | 10           | 60           | 28.1      | 22152   | PASS             |
| 365         | 198          | 1            | 100          | 3.3       | 2626    | PASS             |
| 441         | 198          | 0.01         | 100          | 13.2      | 10365   | PASS             |
| 442         | 198          | 50           | 100          | 82.8      | 65186   | PASS             |
| 443         | 442          | 15           | 24           | 20.0      | 13008   | PASS             |