

Data Path : Z:\SVOASRV\HPCHEM1\BNA_G\DATA\BG022719\
 Data File : BG039635.D
 Acq On : 27 Feb 2019 15:20
 Operator : JU/SJ
 Sample : K1594-38
 Misc :
 ALS Vial : 7 Sample Multiplier: 1

Instrument :
 BNA_G
 ClientSampleId :
 B-8(7.5-8.5)

Quant Time: Feb 27 23:56:43 2019
 Quant Method : Z:\SVOASRV\HPCHEM1\BNA_G\METHODS\8270-BG012919.M
 Quant Title : ASP BNA STANDARDS FOR 5 POINT CALIBRATION
 QLast Update : Tue Jan 29 15:41:51 2019
 Response via : Initial Calibration

Internal Standards	R.T.	QIon	Response	Conc	Units	Dev(Min)
1) 1,4-Dichlorobenzene-d4	8.17	152	45417	20.00	ng	-0.02
21) Naphthalene-d8	10.99	136	182328	20.00	ng	-0.02
39) Acenaphthene-d10	14.79	164	129324	20.00	ng	-0.02
64) Phenanthrene-d10	17.53	188	333387	20.00	ng	-0.02
76) Chrysene-d12	21.82	240	355841	20.00	ng	-0.03
87) Perylene-d12	25.20	264	364833	20.00	ng	-0.04

System Monitoring Compounds

5) 2-Fluorophenol	5.71	112	389295	146.70	ng	0.00
7) Phenol-d6	7.31	99	551231	141.12	ng	0.00
23) Nitrobenzene-d5	9.34	82	315223	108.01	ng	-0.02
42) 2,4,6-Tribromophenol	16.28	330	232283	166.80	ng	-0.02
45) 2-Fluorobiphenyl	13.41	172	746619	82.82	ng	-0.02
79) Terphenyl-d14	20.12	244	1286169	76.51	ng	-0.03

Target Compounds

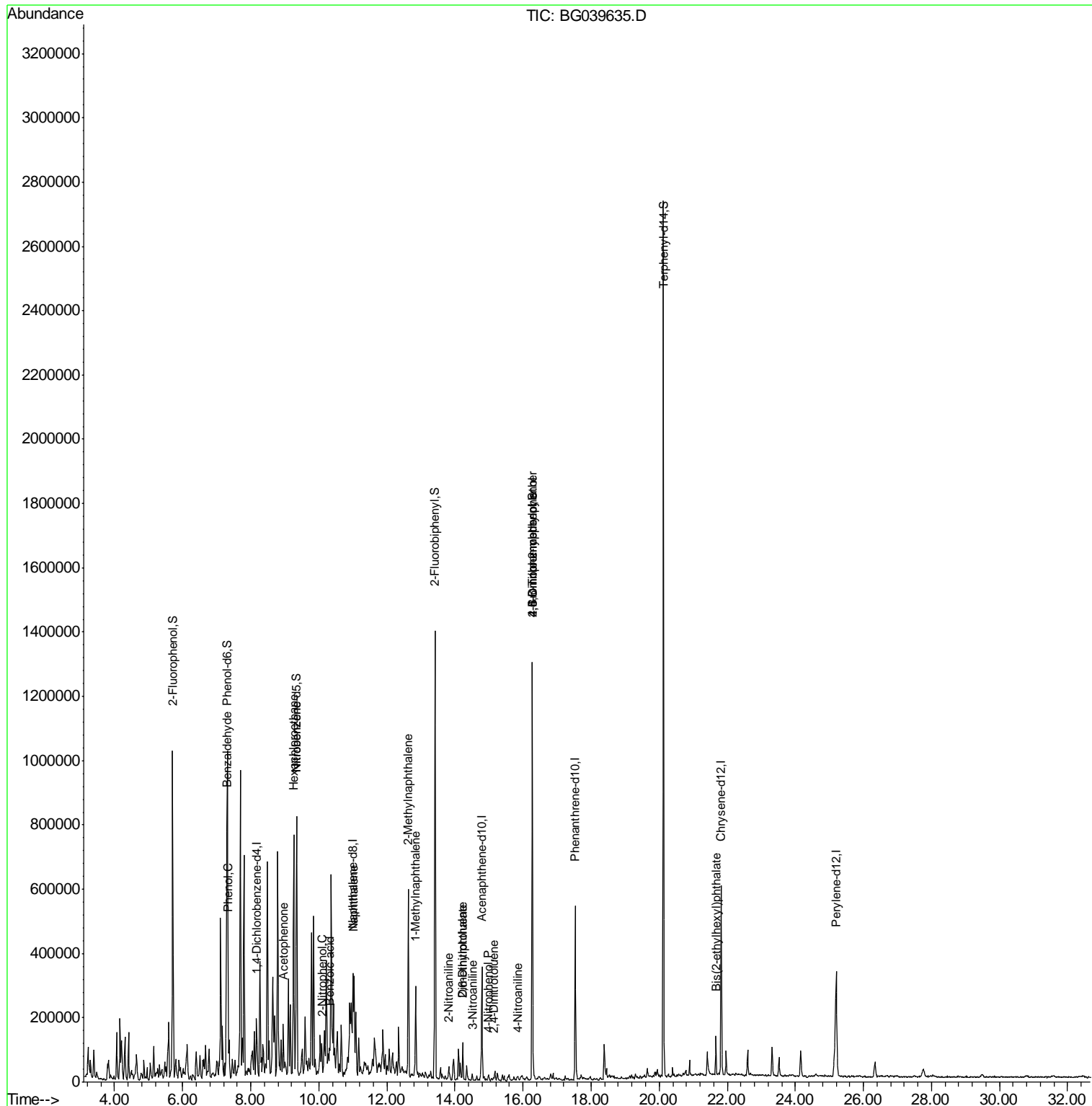
						Qvalue
9) Benzaldehyde	7.29	77	18383	6.333	ng	# 1
10) Phenol	7.33	94	8485	2.084	ng	# 49
18) Hexachloroethane	9.27	117	70968	58.896	ng	# 1
22) Acetophenone	8.96	105	117169	23.924	ng	# 49
24) Nitrobenzene	9.35	77	9580	3.038	ng	# 11
26) 2-Nitrophenol	10.11	139	106	4.107	ng	# 1
31) Naphthalene	11.04	128	157362	17.397	ng	98
32) Benzoic acid	10.30	122	58	9.049	ng	# 1
37) 2-Methylnaphthalene	12.63	142	287587	42.928	ng	99
38) 1-Methylnaphthalene	12.84	142	128739	19.935	ng	99
48) 2-Nitroaniline	13.81	65	371	8.428	ng	# 43
50) Dimethylphthalate	14.23	163	68527	6.561	ng	# 97
51) 2,6-Dinitrotoluene	14.24	165	851	6.935	ng	# 57
53) 3-Nitroaniline	14.51	138	62	5.819	ng	# 1
56) 4-Nitrophenol	14.96	139	88	5.837	ng	# 1
57) 2,4-Dinitrotoluene	15.13	165	1255	8.245	ng	# 34
62) 4-Nitroaniline	15.84	138	81	4.236	ng	# 10
65) 4,6-Dinitro-2-methylphenol	16.28	198	1021	5.156	ng	# 21
67) 4-Bromophenyl-phenylether	16.28	248	17426	4.712	ng	# 1
84) Bis(2-ethylhexyl)phthalate	21.67	149	48505	3.638	ng	99

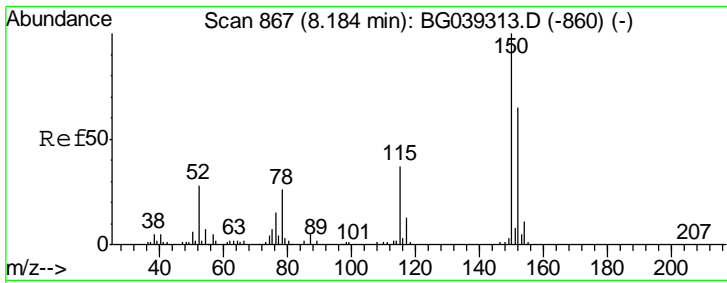
(#) = qualifier out of range (m) = manual integration (+) = signals summed

Data Path : Z:\SVOASRV\HPCHEM1\BNA_G\DATA\BG022719\
 Data File : BG039635.D
 Acq On : 27 Feb 2019 15:20
 Operator : JU/SJ
 Sample : K1594-38
 Misc :
 ALS Vial : 7 Sample Multiplier: 1

Instrument :
 BNA_G
 ClientSampled :
 B-8(7.5-8.5)

Quant Time: Feb 27 23:56:43 2019
 Quant Method : Z:\SVOASRV\HPCHEM1\BNA_G\METHODS\8270-BG012919.M
 Quant Title : ASP BNA STANDARDS FOR 5 POINT CALIBRATION
 QLast Update : Tue Jan 29 15:41:51 2019
 Response via : Initial Calibration

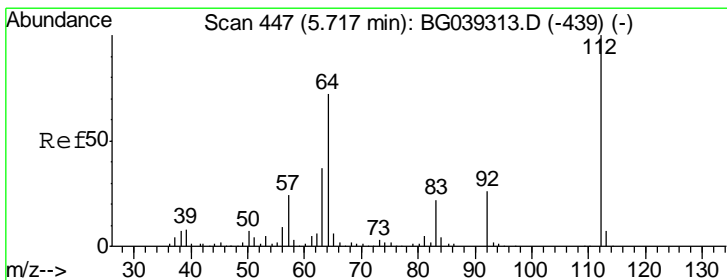
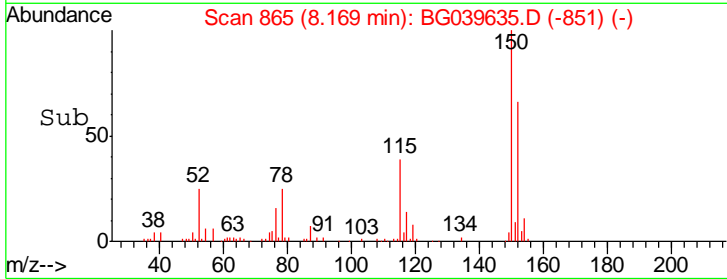
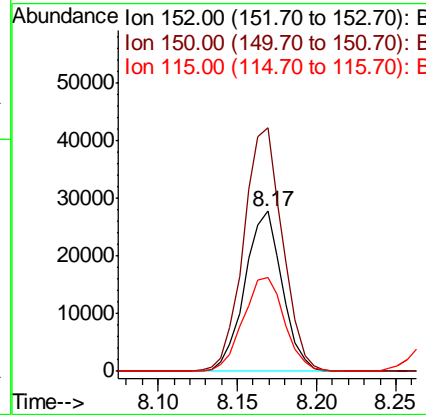
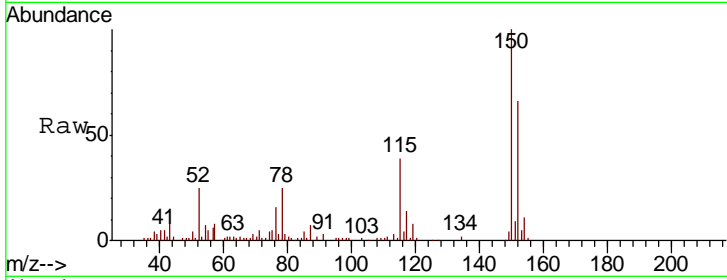




#1
 1,4-Dichlorobenzene-d4
 Concen: 20.000 ng
 RT: 8.17 min Scan# 865
 Delta R.T. -0.02 min
 Lab File: BG039635.D
 Acq: 27 Feb 2019 15:20

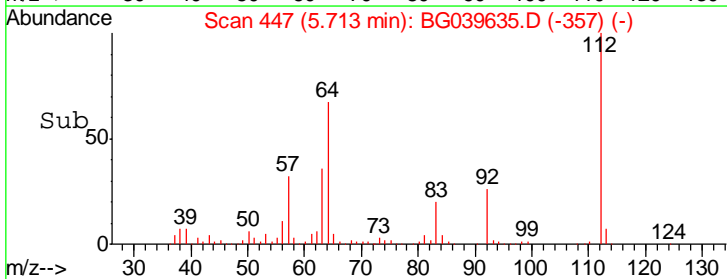
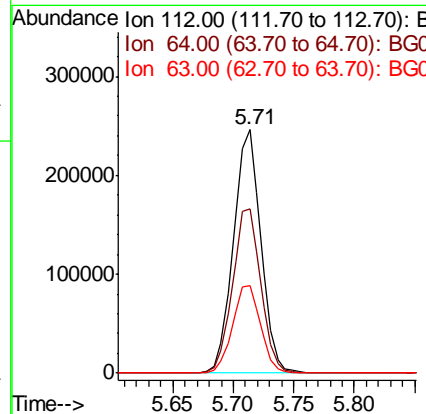
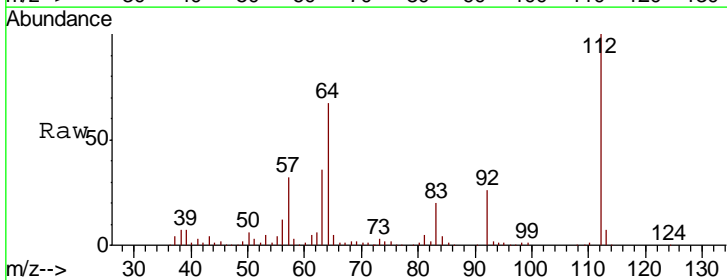
Instrument :
 BNA_G
ClientSampled :
 B-8(7.5-8.5)

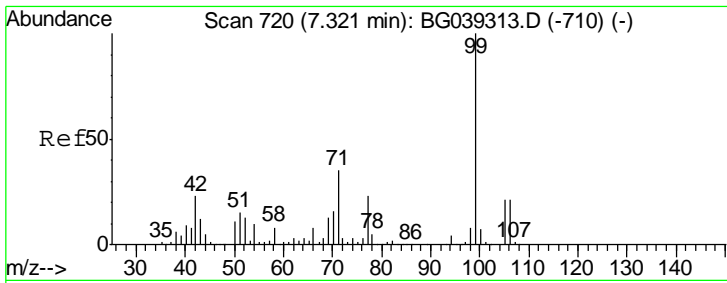
Tgt Ion	Resp	Lower	Upper
152	45417		
152	100		
150	152.2	123.7	185.5
115	58.7	45.9	68.9



#5
 2-Fluorophenol
 Concen: 146.703 ng
 RT: 5.71 min Scan# 447
 Delta R.T. -0.00 min
 Lab File: BG039635.D
 Acq: 27 Feb 2019 15:20

Tgt Ion	Resp	Lower	Upper
112	389295		
112	100		
64	67.4	57.8	86.8
63	35.7	29.8	44.6

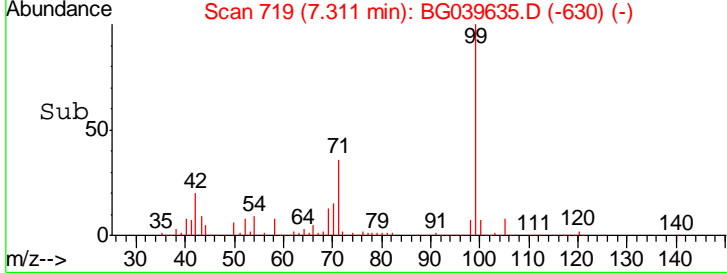
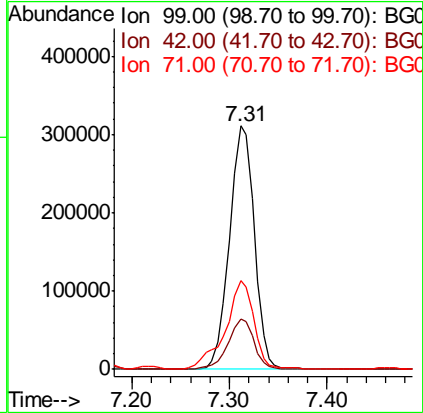
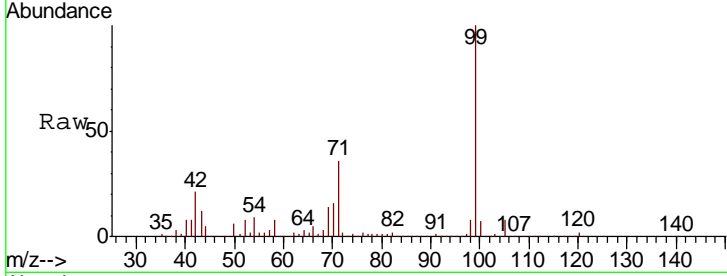




#7
 Phenol-d6
 Concen: 141.122 ng
 RT: 7.31 min Scan# 719
 Delta R.T. -0.01 min
 Lab File: BG039635.D
 Acq: 27 Feb 2019 15:20

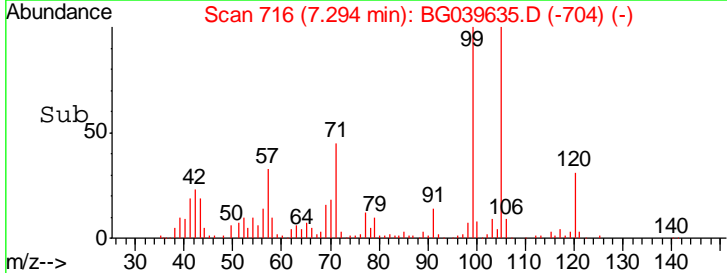
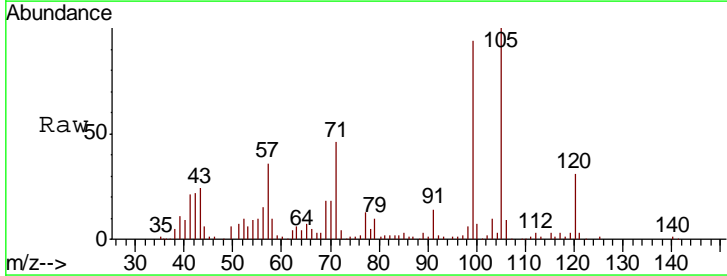
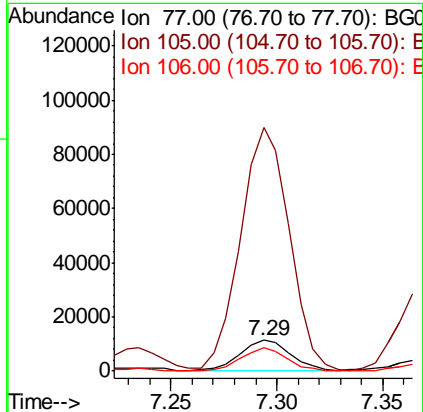
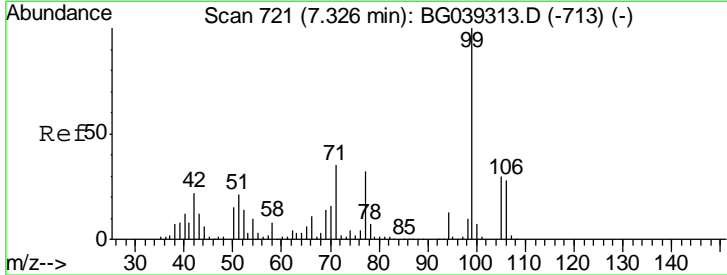
Instrument :
 BNA_G
 ClientSampled :
 B-8(7.5-8.5)

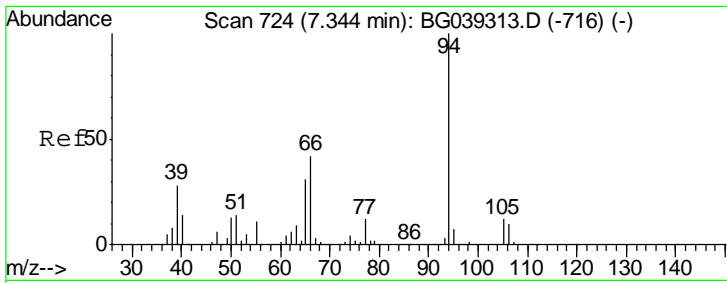
Tgt Ion	Resp	Lower	Upper
99	100		
42	20.6	18.2	27.2
71	36.5	28.0	42.0



#9
 Benzaldehyde
 Concen: 6.333 ng
 RT: 7.29 min Scan# 716
 Delta R.T. -0.03 min
 Lab File: BG039635.D
 Acq: 27 Feb 2019 15:20

Tgt Ion	Resp	Lower	Upper
77	100		
105	793.4	74.5	114.5#
106	75.0	68.0	108.0

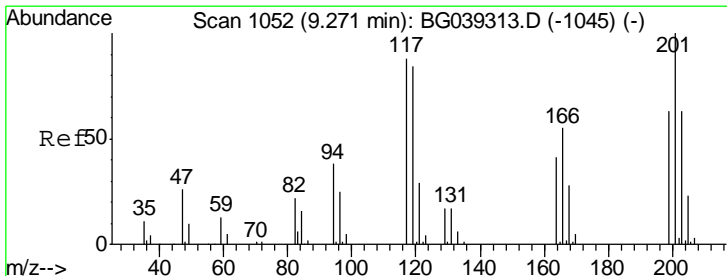
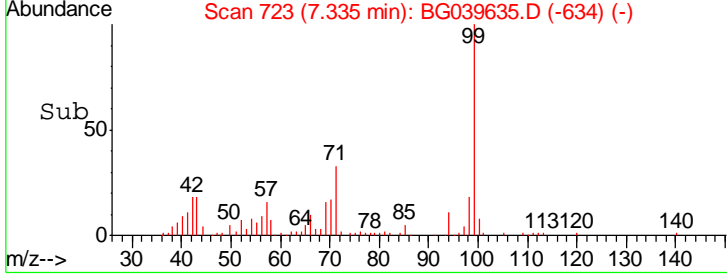
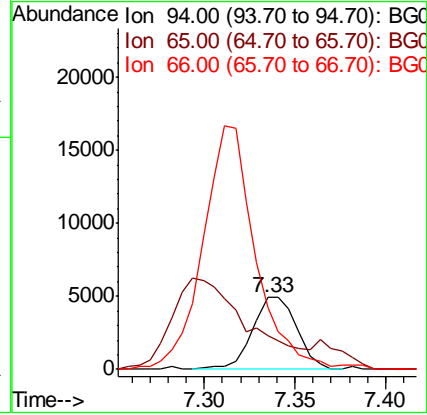
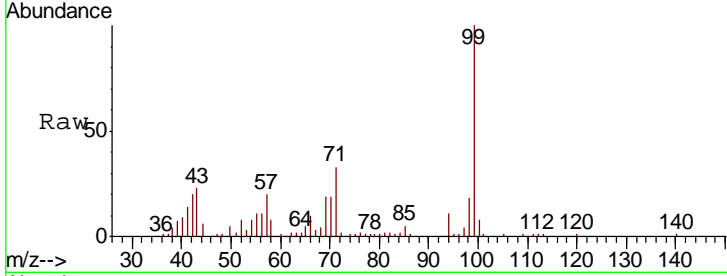




#10
 Phenol
 Concen: 2.084 ng
 RT: 7.33 min Scan# 723
 Delta R.T. -0.01 min
 Lab File: BG039635.D
 Acq: 27 Feb 2019 15:20

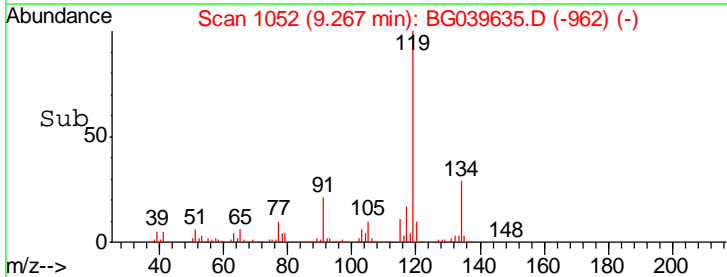
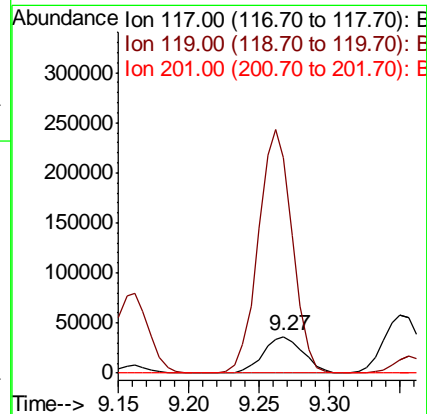
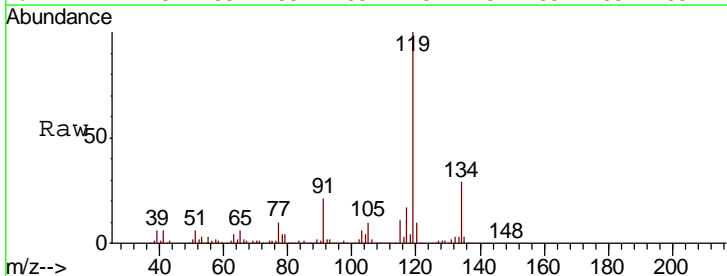
Instrument :
 BNA_G
 ClientSampled :
 B-8(7.5-8.5)

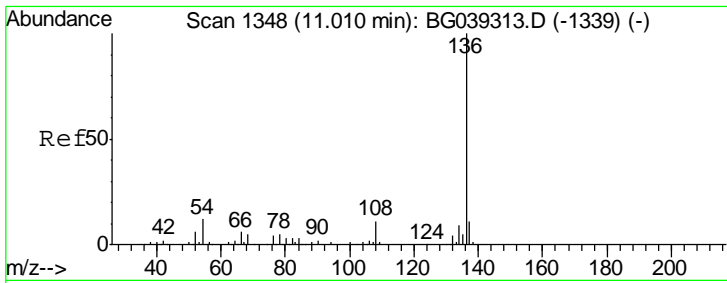
Tgt Ion	Resp	Lower	Upper
94	100		
65	47.5	11.7	51.7
66	86.8	23.7	63.7#



#18
 Hexachloroethane
 Concen: 58.896 ng
 RT: 9.27 min Scan# 1052
 Delta R.T. -0.00 min
 Lab File: BG039635.D
 Acq: 27 Feb 2019 15:20

Tgt Ion	Resp	Lower	Upper
117	100		
119	592.8	76.3	114.5#
201	0.0	91.1	136.7#

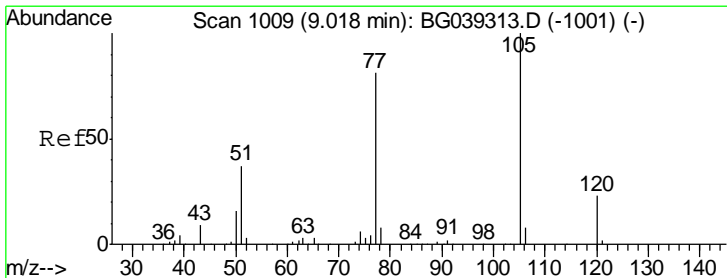
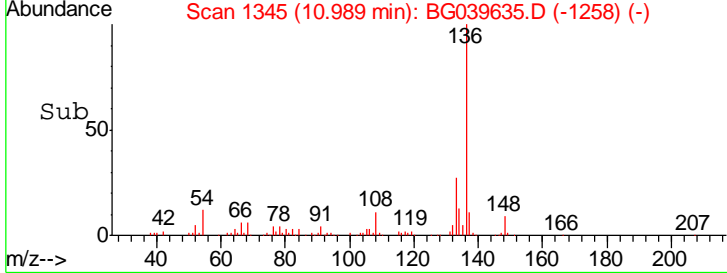
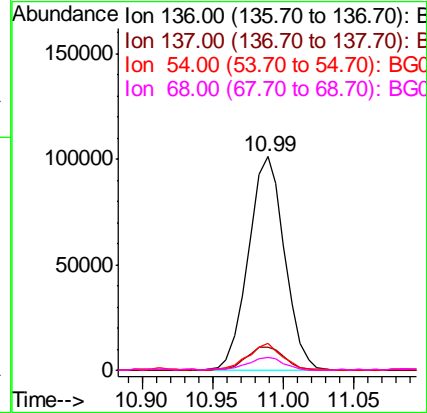
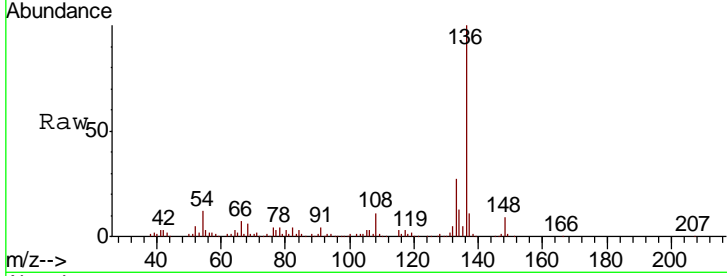




#21
 Naphthalene-d8
 Concen: 20.000 ng
 RT: 10.99 min Scan# 1345
 Delta R.T. -0.02 min
 Lab File: BG039635.D
 Acq: 27 Feb 2019 15:20

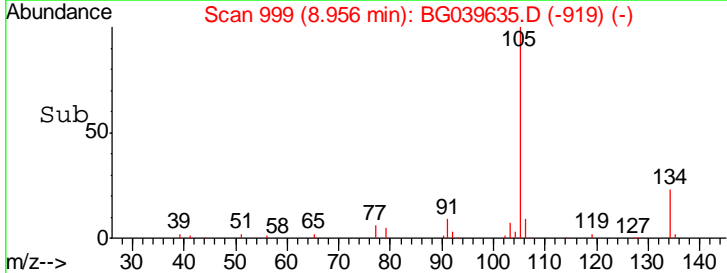
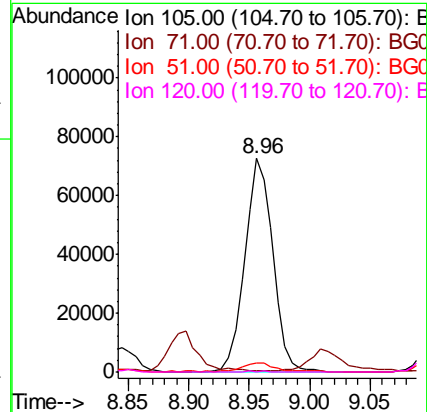
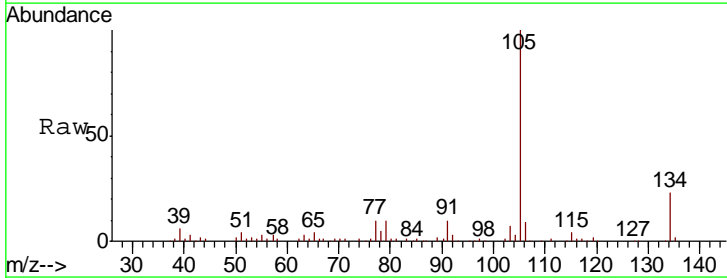
Instrument :
 BNA_G
ClientSampled :
 B-8(7.5-8.5)

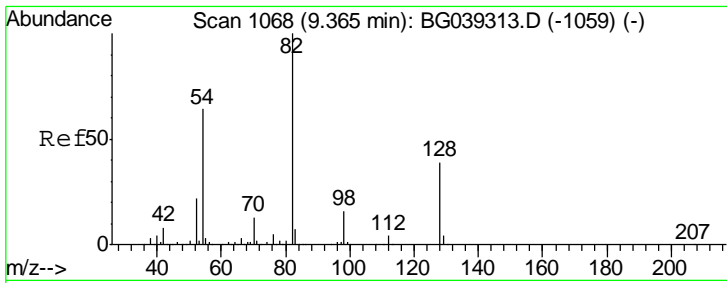
Tgt Ion	Resp	Lower	Upper
136	182328		
137	10.6	9.1	13.7
54	12.4	9.4	14.2
68	6.2	4.2	6.4



#22
 Acetophenone
 Concen: 23.924 ng
 RT: 8.96 min Scan# 999
 Delta R.T. -0.06 min
 Lab File: BG039635.D
 Acq: 27 Feb 2019 15:20

Tgt Ion	Resp	Lower	Upper
105	117169		
71	0.6	0.8	1.2#
51	4.1	30.2	45.2#
120	0.2	18.0	27.0#

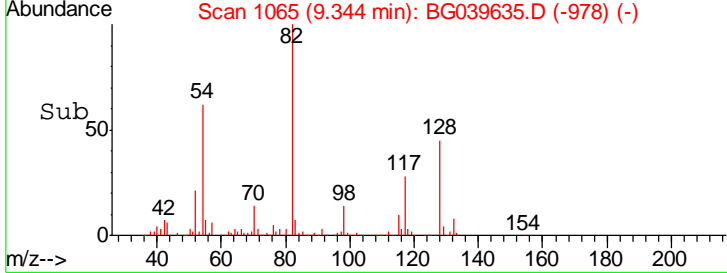
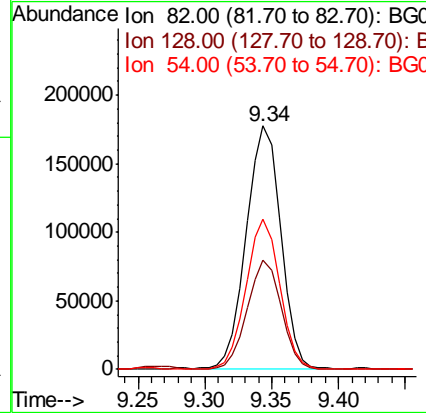
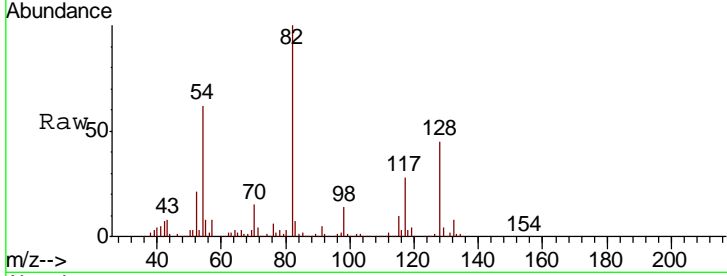




#23
 Nitrobenzene-d5
 Concen: 108.006 ng
 RT: 9.34 min Scan# 1065
 Delta R.T. -0.02 min
 Lab File: BG039635.D
 Acq: 27 Feb 2019 15:20

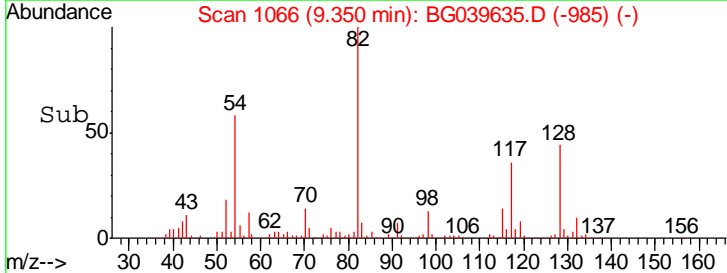
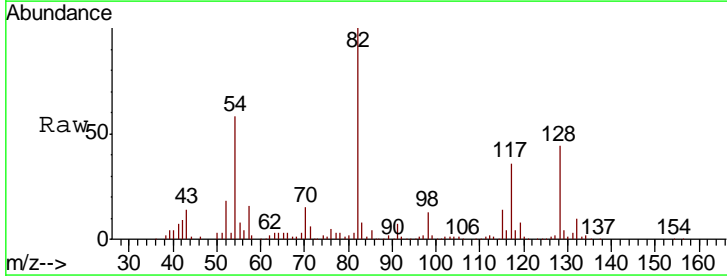
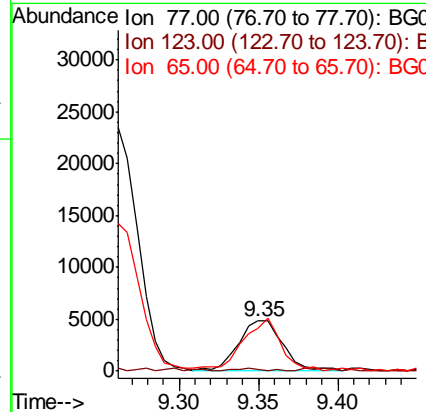
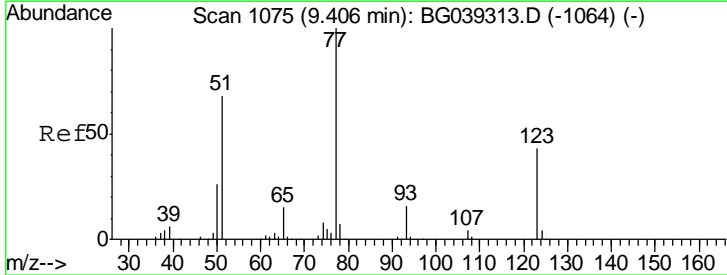
Instrument :
 BNA_G
ClientSampled :
 B-8(7.5-8.5)

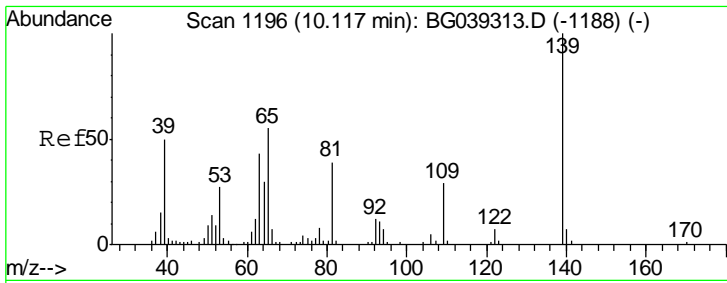
Tgt Ion	Resp	Lower	Upper
82	315223		
128	44.6	31.3	46.9
54	61.6	50.9	76.3



#24
 Nitrobenzene
 Concen: 3.038 ng
 RT: 9.35 min Scan# 1066
 Delta R.T. -0.06 min
 Lab File: BG039635.D
 Acq: 27 Feb 2019 15:20

Tgt Ion	Resp	Lower	Upper
77	9580		
123	3.6	34.1	51.1#
65	85.0	12.3	18.5#

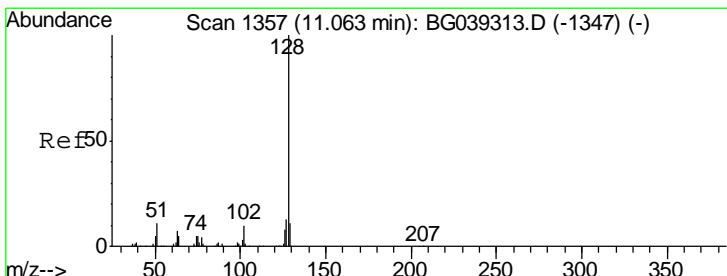
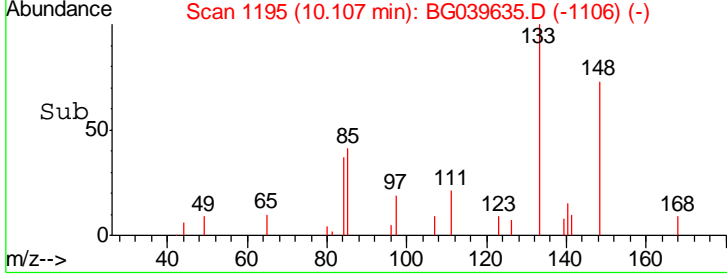
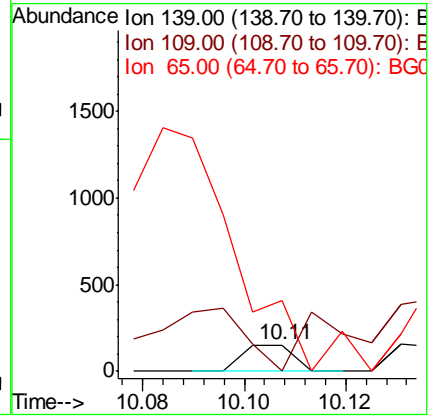
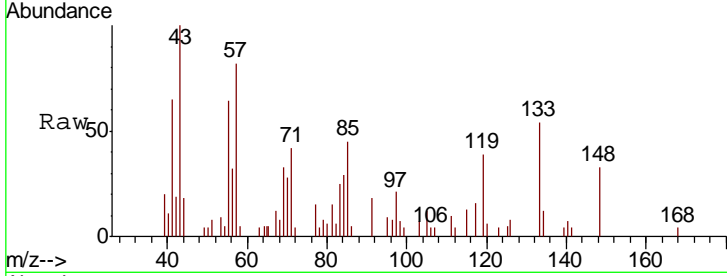




#26
 2-Nitrophenol
 Concen: 4.107 ng
 RT: 10.11 min Scan# 1195
 Delta R.T. -0.01 min
 Lab File: BG039635.D
 Acq: 27 Feb 2019 15:20

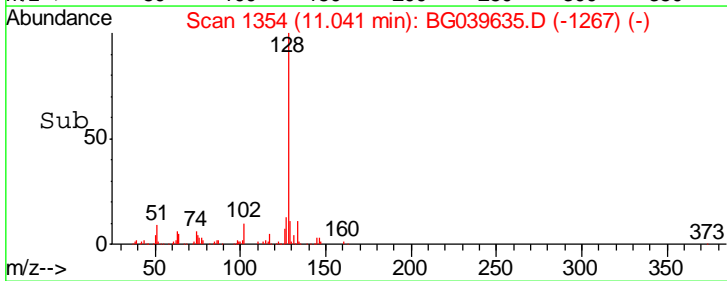
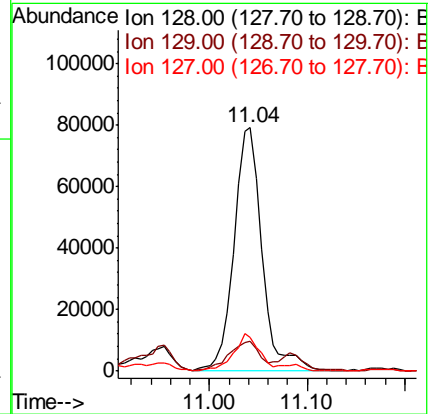
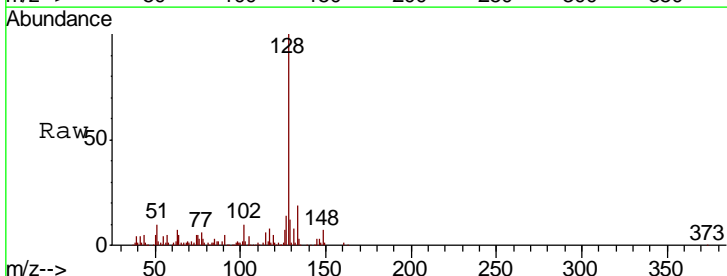
Instrument :
 BNA_G
 ClientSampled :
 B-8(7.5-8.5)

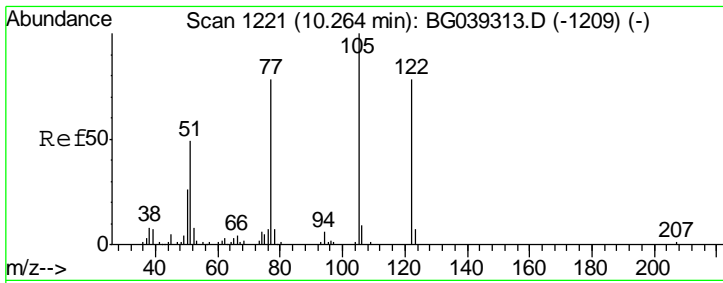
Tgt Ion	Resp	Lower	Upper
139	106		
109	0.0	23.4	35.0#
65	268.4	44.3	66.5#



#31
 Naphthalene
 Concen: 17.397 ng
 RT: 11.04 min Scan# 1354
 Delta R.T. -0.02 min
 Lab File: BG039635.D
 Acq: 27 Feb 2019 15:20

Tgt Ion	Resp	Lower	Upper
128	157362		
129	12.1	8.7	13.1
127	13.8	10.8	16.2

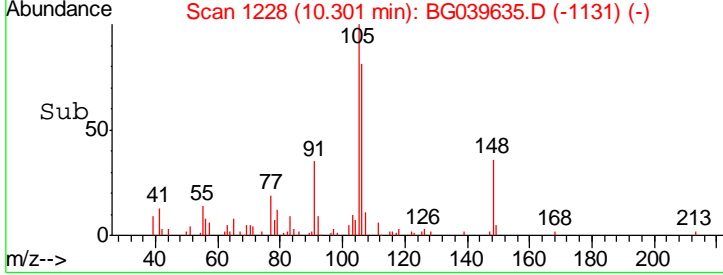
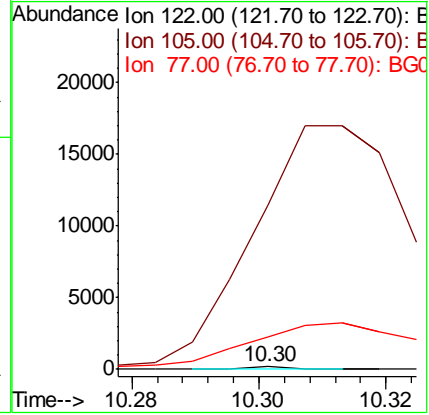
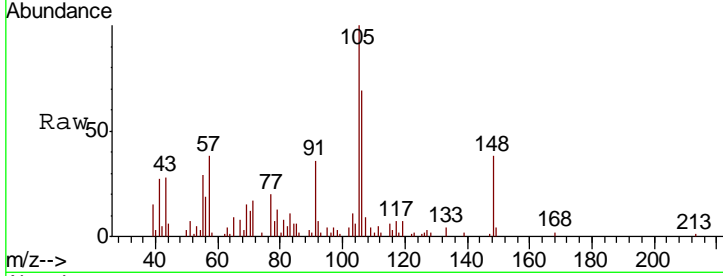




#32
 Benzoic acid
 Concen: 9.049 ng
 RT: 10.30 min Scan# 1228
 Delta R.T. 0.04 min
 Lab File: BG039635.D
 Acq: 27 Feb 2019 15:20

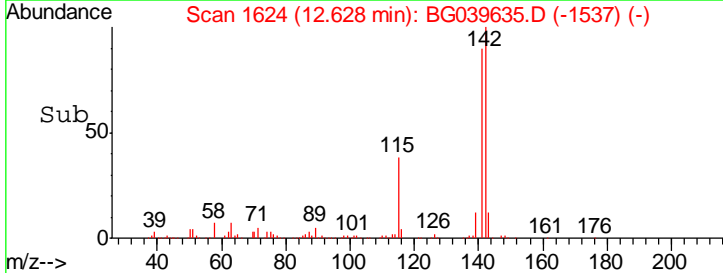
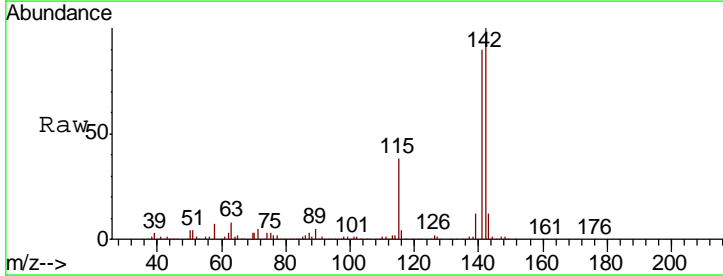
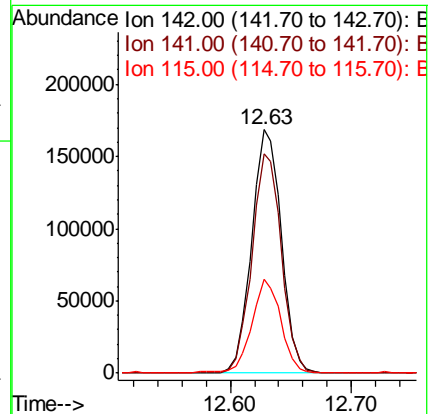
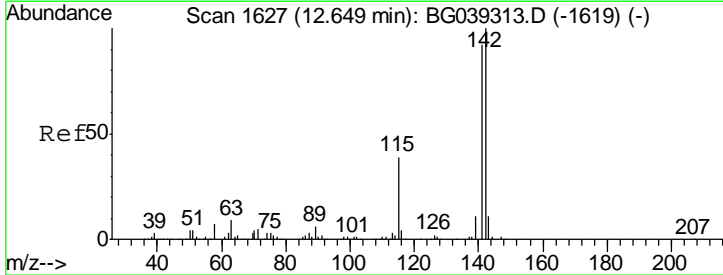
Instrument :
 BNA_G
 ClientSampled :
 B-8(7.5-8.5)

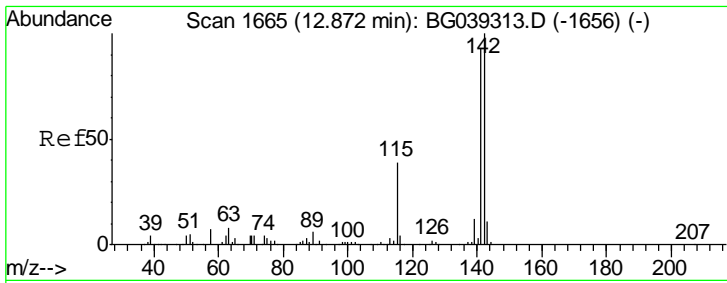
Tgt Ion	Resp	Lower	Upper
122	100		
105	6961.2	101.8	141.8#
77	1372.7	76.3	116.3#



#37
 2-Methylnaphthalene
 Concen: 42.928 ng
 RT: 12.63 min Scan# 1624
 Delta R.T. -0.02 min
 Lab File: BG039635.D
 Acq: 27 Feb 2019 15:20

Tgt Ion	Resp	Lower	Upper
142	100		
141	90.0	73.5	110.3
115	38.3	30.8	46.2

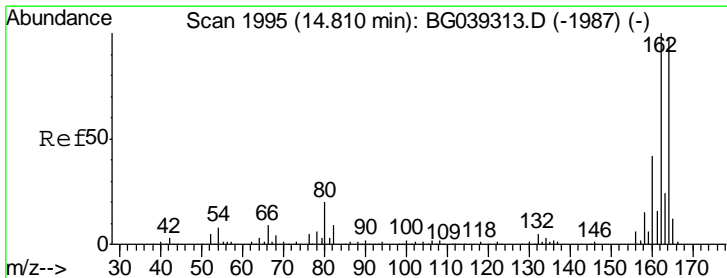
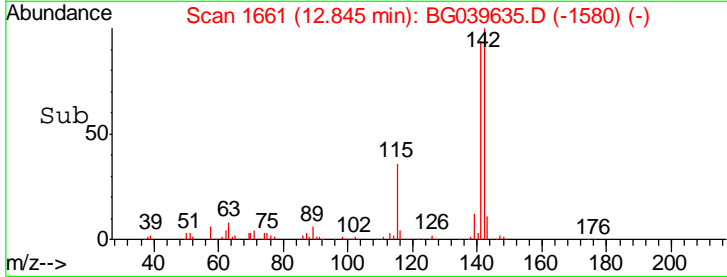
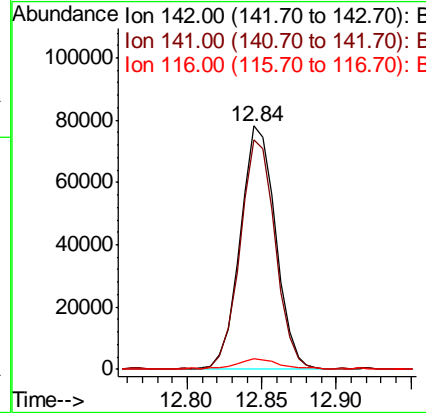
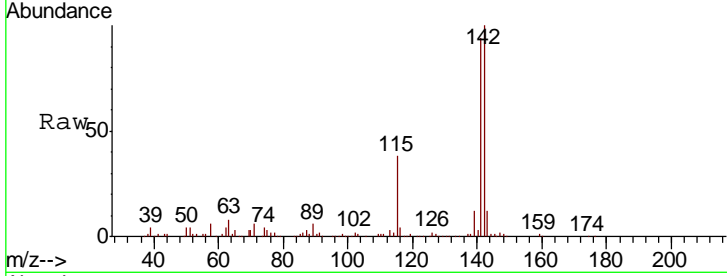




#38
 1-Methylnaphthalene
 Concen: 19.935 ng
 RT: 12.84 min Scan# 1661
 Delta R.T. -0.03 min
 Lab File: BG039635.D
 Acq: 27 Feb 2019 15:20

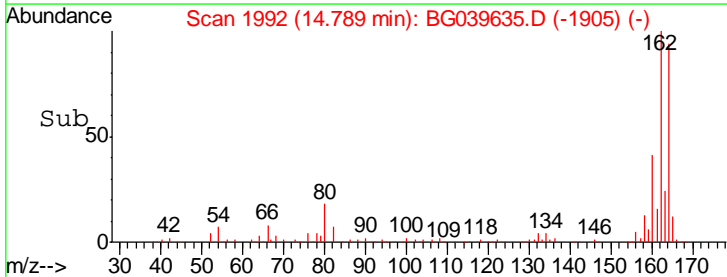
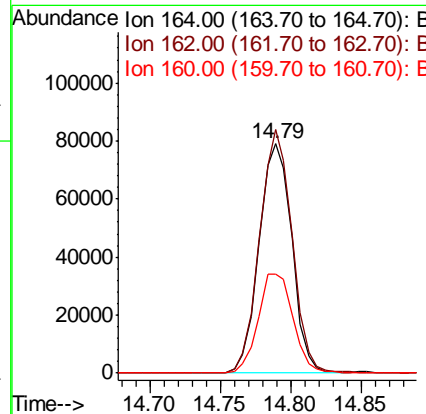
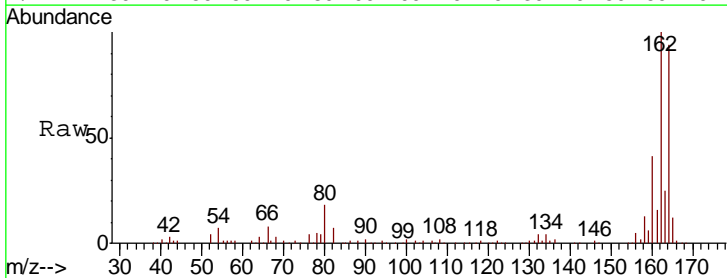
Instrument :
 BNA_G
 ClientSampled :
 B-8(7.5-8.5)

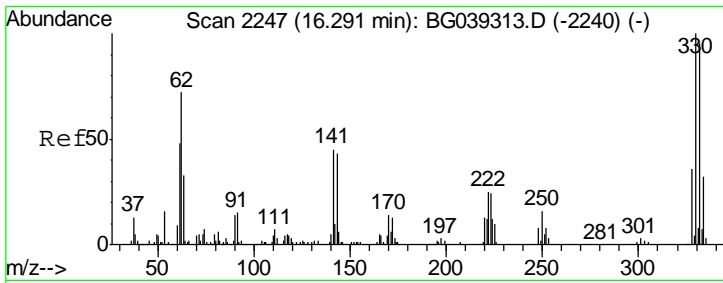
Tgt Ion	Resp	Lower	Upper
142	128739		
141	94.1	74.2	111.4
116	4.4	3.0	4.6



#39
 Acenaphthene-d10
 Concen: 20.000 ng
 RT: 14.79 min Scan# 1992
 Delta R.T. -0.02 min
 Lab File: BG039635.D
 Acq: 27 Feb 2019 15:20

Tgt Ion	Resp	Lower	Upper
164	129324		
162	106.3	81.6	122.4
160	43.3	34.2	51.2

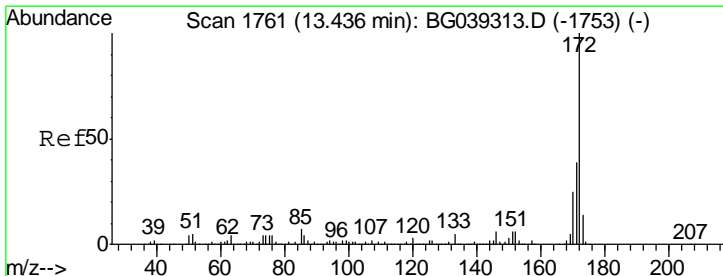
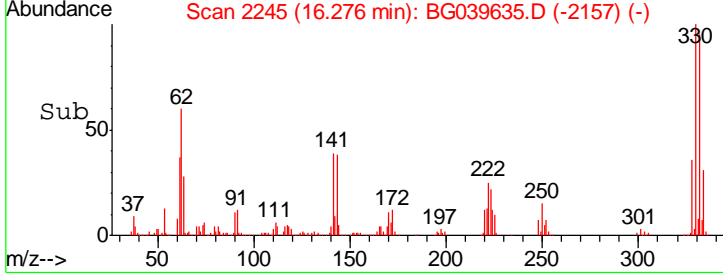
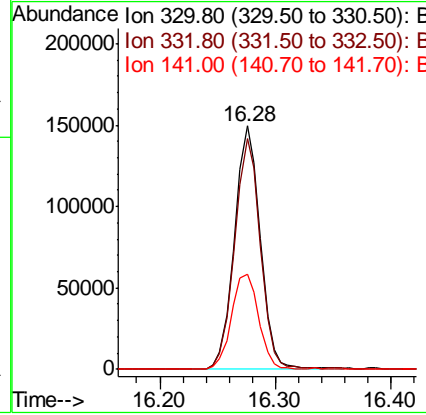
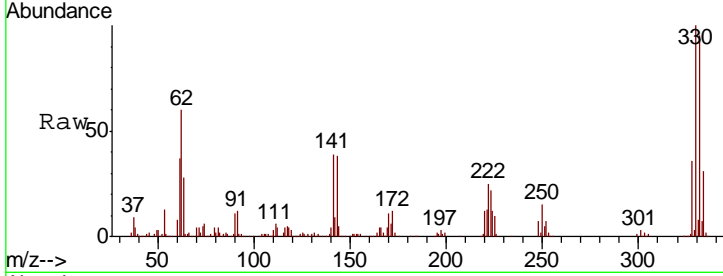




#42
 2,4,6-Tribromophenol
 Concen: 166.798 ng
 RT: 16.28 min Scan# 2245
 Delta R.T. -0.02 min
 Lab File: BG039635.D
 Acq: 27 Feb 2019 15:20

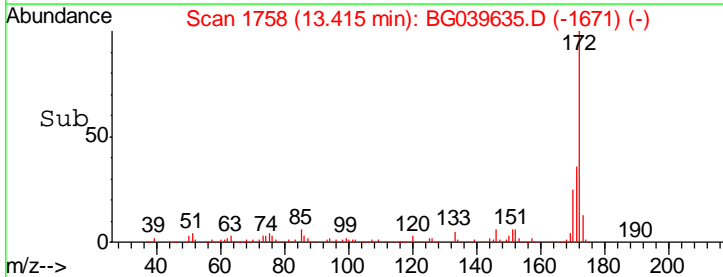
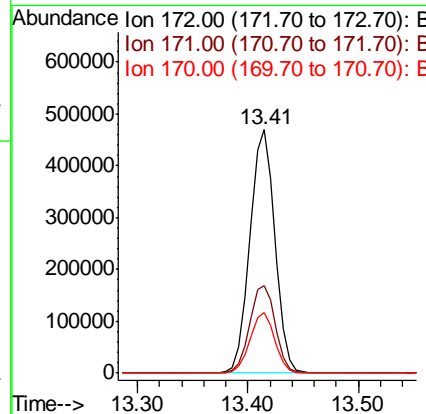
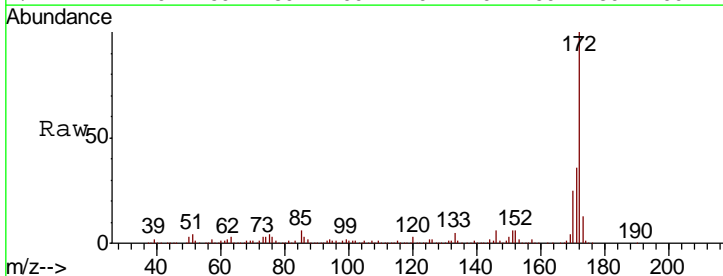
Instrument :
 BNA_G
 ClientSampled :
 B-8(7.5-8.5)

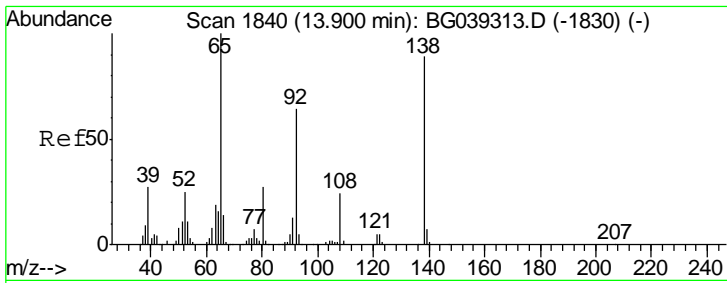
Tgt Ion	Resp	Lower	Upper
330	100		
332	94.9	75.7	113.5
141	41.2	35.6	53.4



#45
 2-Fluorobiphenyl
 Concen: 82.820 ng
 RT: 13.41 min Scan# 1758
 Delta R.T. -0.02 min
 Lab File: BG039635.D
 Acq: 27 Feb 2019 15:20

Tgt Ion	Resp	Lower	Upper
172	100		
171	35.9	30.8	46.2
170	24.7	20.2	30.4

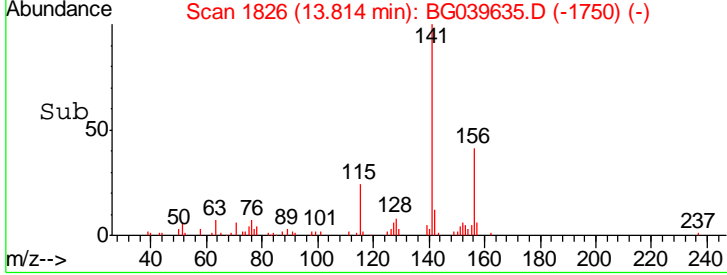
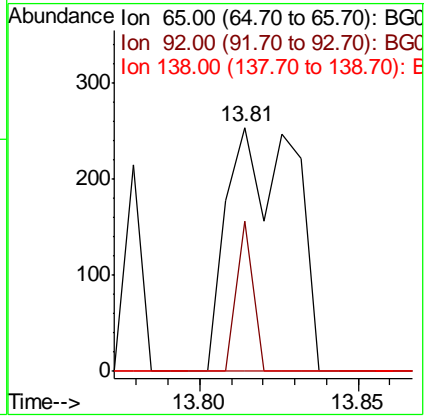
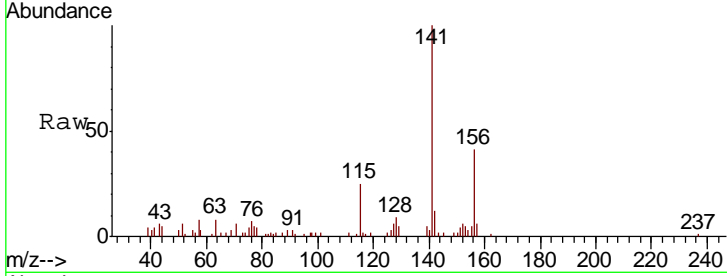




#48
 2-Nitroaniline
 Concen: 8.428 ng
 RT: 13.81 min Scan# 1826
 Delta R.T. -0.08 min
 Lab File: BG039635.D
 Acq: 27 Feb 2019 15:20

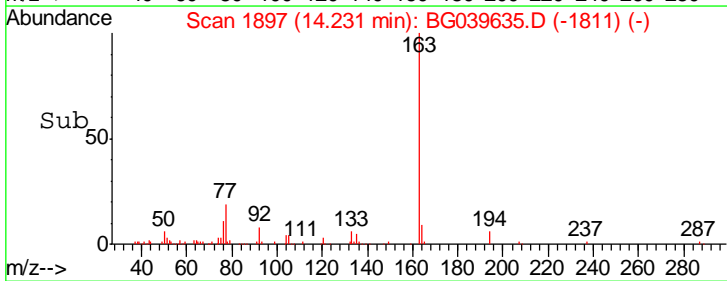
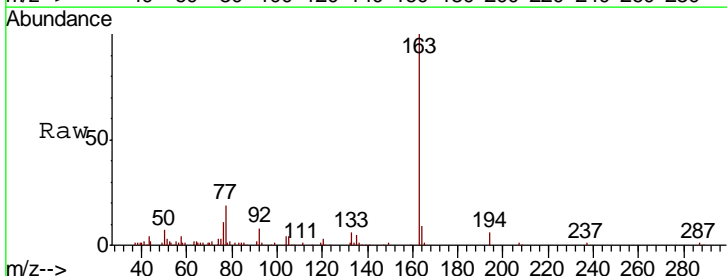
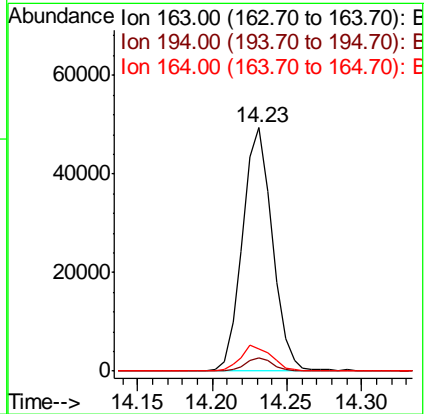
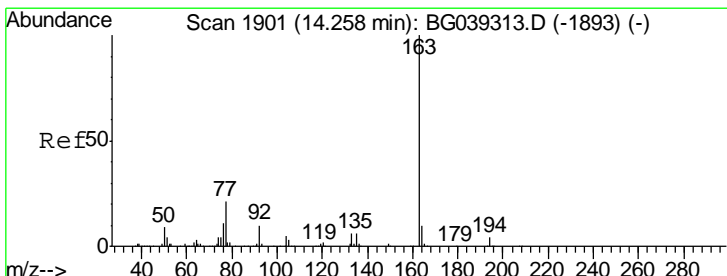
Instrument :
 BNA_G
 ClientSampled :
 B-8(7.5-8.5)

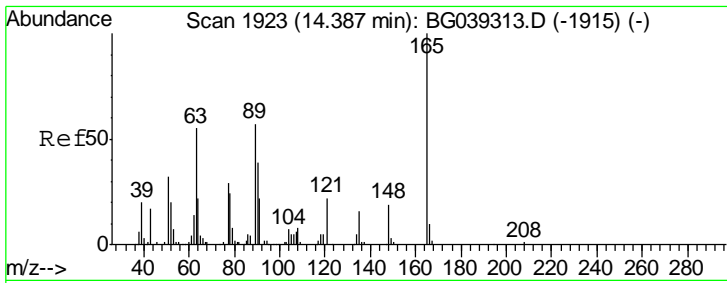
Tgt Ion	Resp	Lower	Upper
65	100		
92	61.7	51.4	77.2
138	0.0	71.4	107.2#



#50
 Dimethylphthalate
 Concen: 6.561 ng
 RT: 14.23 min Scan# 1897
 Delta R.T. -0.03 min
 Lab File: BG039635.D
 Acq: 27 Feb 2019 15:20

Tgt Ion	Resp	Lower	Upper
163	100		
194	5.6	3.6	5.4#
164	9.2	8.4	12.6

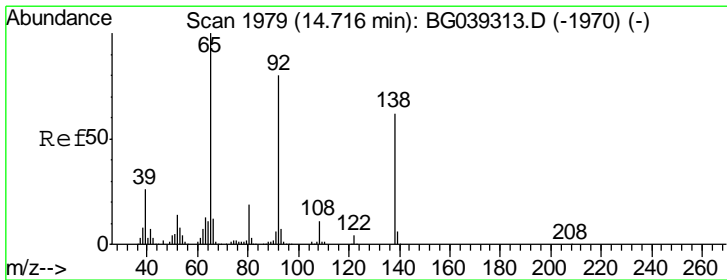
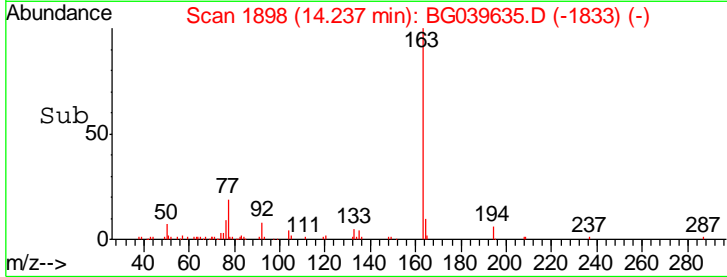
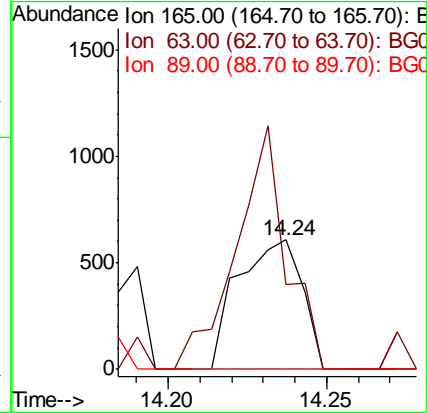
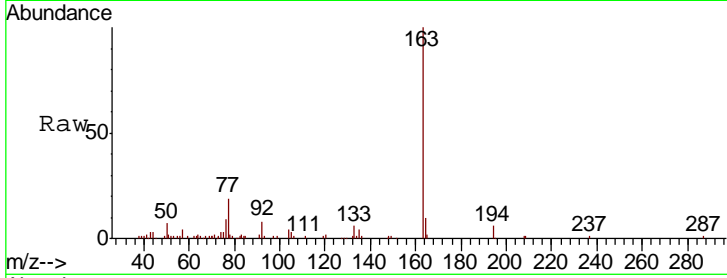




#51
 2,6-Dinitrotoluene
 Concen: 6.935 ng
 RT: 14.24 min Scan# 1898
 Delta R.T. -0.15 min
 Lab File: BG039635.D
 Acq: 27 Feb 2019 15:20

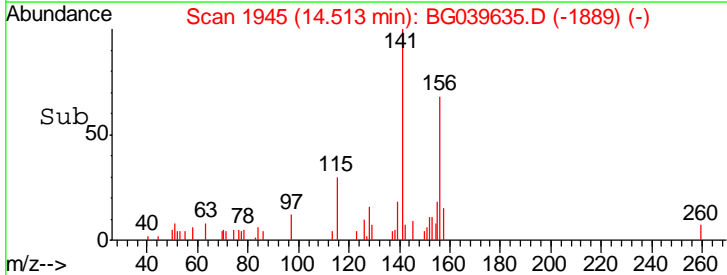
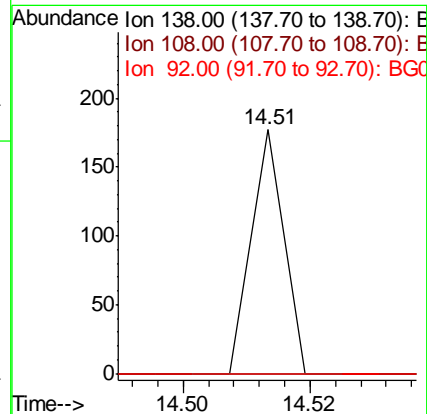
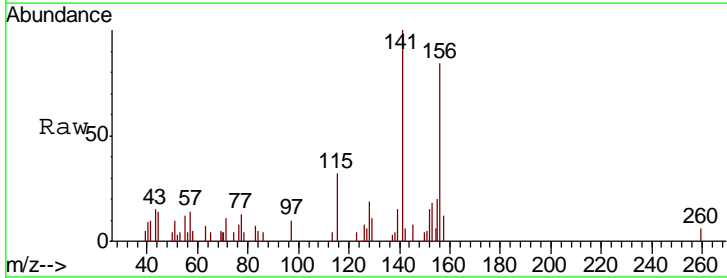
Instrument :
 BNA_G
 ClientSampled :
 B-8(7.5-8.5)

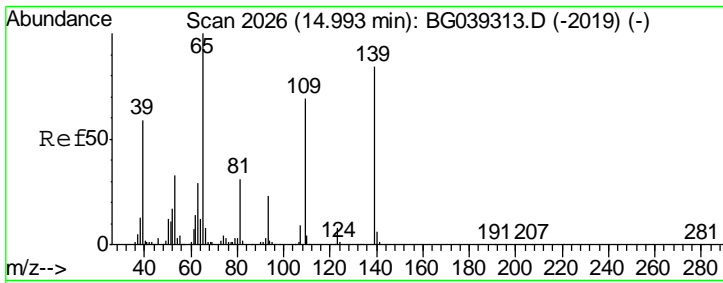
Tgt Ion	Resp	Lower	Upper
165	100		
63	65.4	47.0	70.6
89	0.0	45.8	68.8#



#53
 3-Nitroaniline
 Concen: 5.819 ng
 RT: 14.51 min Scan# 1945
 Delta R.T. -0.20 min
 Lab File: BG039635.D
 Acq: 27 Feb 2019 15:20

Tgt Ion	Resp	Lower	Upper
138	100		
108	0.0	13.8	20.8#
92	0.0	103.7	155.5#

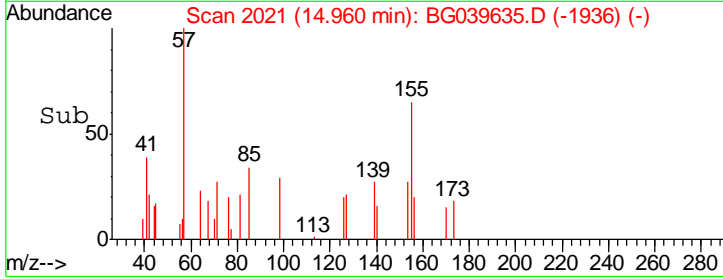
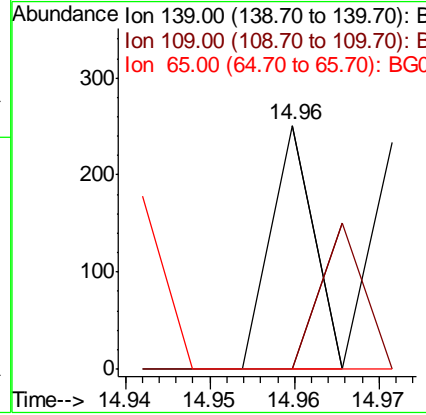
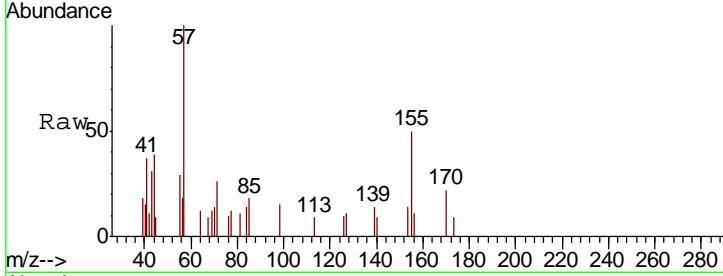




#56
 4-Nitrophenol
 Concen: 5.837 ng
 RT: 14.96 min Scan# 2021
 Delta R.T. -0.03 min
 Lab File: BG039635.D
 Acq: 27 Feb 2019 15:20

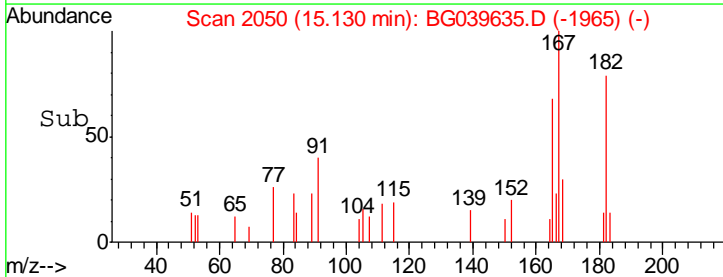
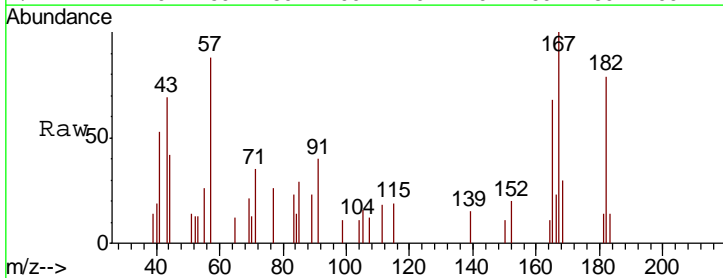
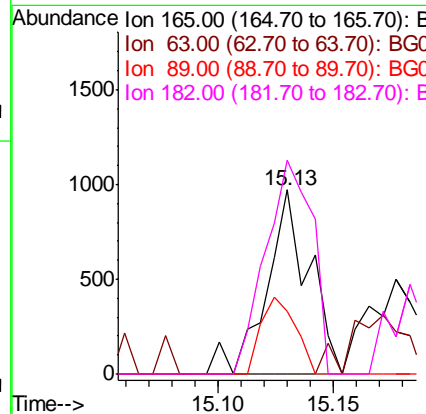
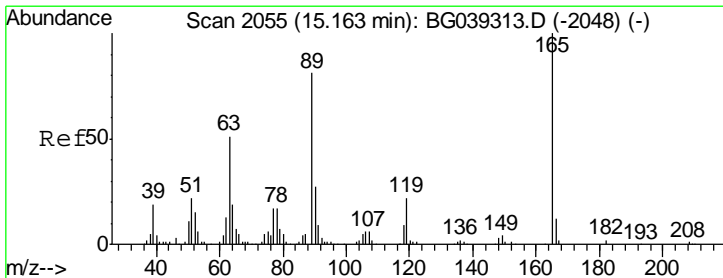
Instrument :
 BNA_G
 ClientSampled :
 B-8(7.5-8.5)

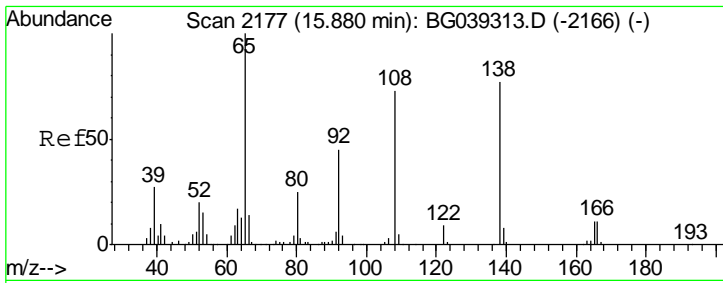
Tgt Ion	Ratio	Lower	Upper
139	100		
109	0.0	61.9	101.9#
65	0.0	99.1	139.1#



#57
 2,4-Dinitrotoluene
 Concen: 8.245 ng
 RT: 15.13 min Scan# 2050
 Delta R.T. -0.03 min
 Lab File: BG039635.D
 Acq: 27 Feb 2019 15:20

Tgt Ion	Ratio	Lower	Upper
165	100		
63	0.0	41.0	61.6#
89	33.7	64.6	96.8#
182	115.9	2.0	3.0#

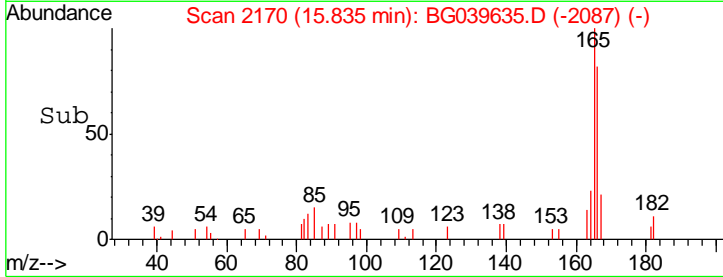
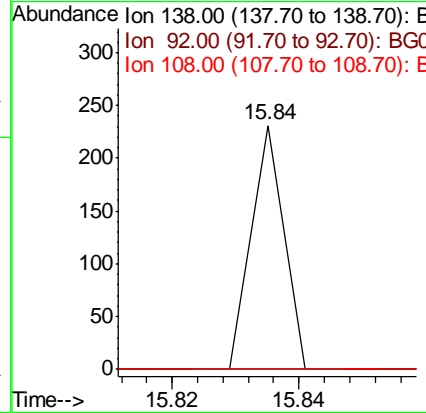
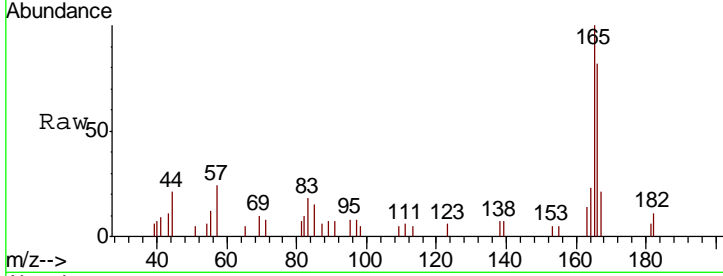




#62
 4-Nitroaniline
 Concen: 4.236 ng
 RT: 15.84 min Scan# 2170
 Delta R.T. -0.04 min
 Lab File: BG039635.D
 Acq: 27 Feb 2019 15:20

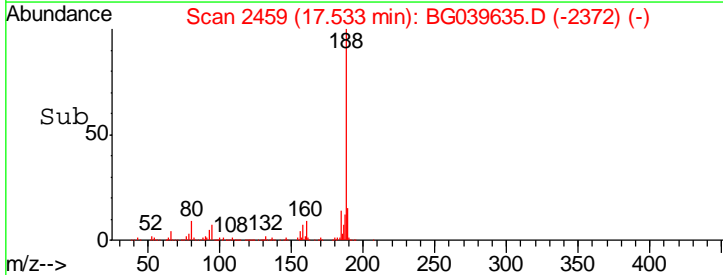
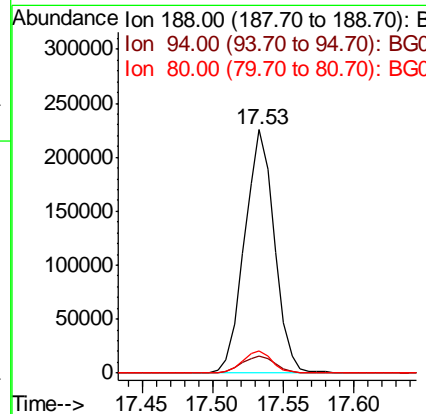
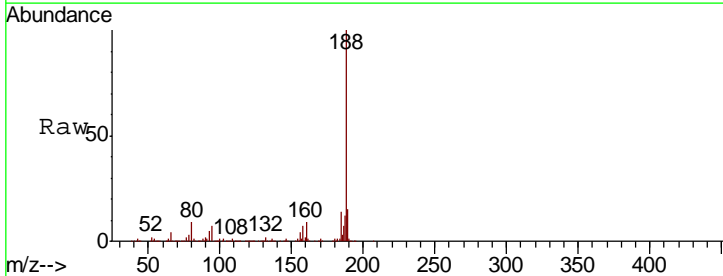
Instrument :
 BNA_G
 ClientSampled :
 B-8(7.5-8.5)

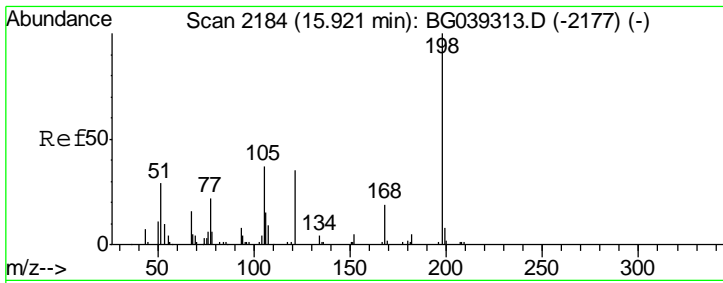
Tgt Ion	Resp	Lower	Upper
138	100		
92	0.0	38.7	78.7#
108	0.0	74.6	114.6#



#64
 Phenanthrene-d10
 Concen: 20.000 ng
 RT: 17.53 min Scan# 2459
 Delta R.T. -0.02 min
 Lab File: BG039635.D
 Acq: 27 Feb 2019 15:20

Tgt Ion	Resp	Lower	Upper
188	100		
94	7.2	6.9	10.3
80	9.3	8.1	12.1

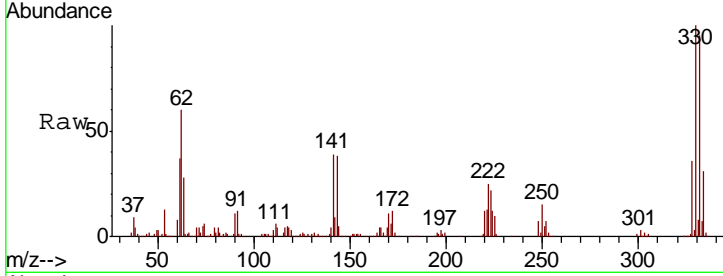




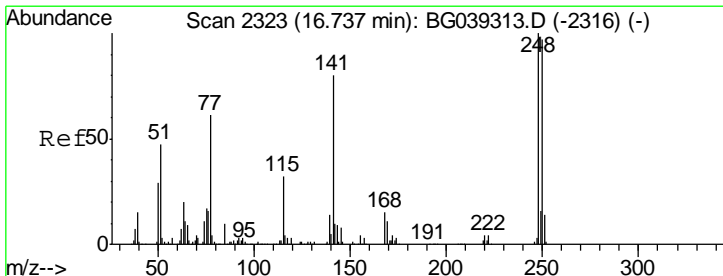
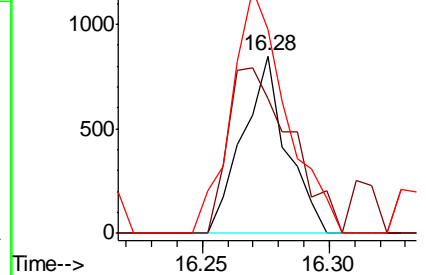
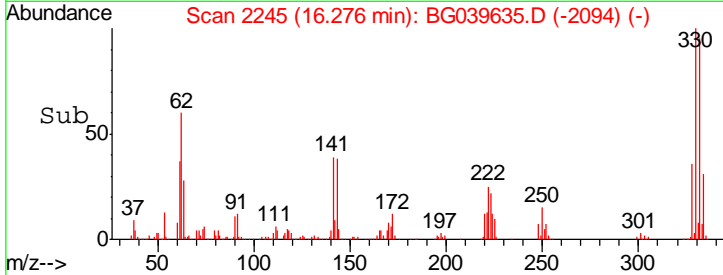
#65
 4,6-Dinitro-2-methylphenol
 Concen: 5.156 ng
 RT: 16.28 min Scan# 2245
 Delta R.T. 0.36 min
 Lab File: BG039635.D
 Acq: 27 Feb 2019 15:20

Instrument :
 BNA_G
 ClientSampled :
 B-8(7.5-8.5)

Tgt Ion	Resp	Lower	Upper
198	1021		
51	76.3	27.4	67.4#
105	115.3	19.7	59.7#

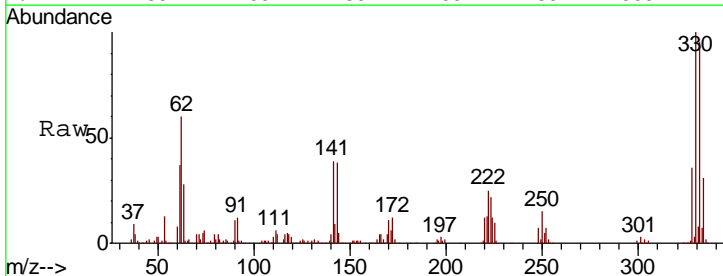


Abundance Ion 198.00 (197.70 to 198.70): E
 Ion 51.00 (50.70 to 51.70): BG
 Ion 105.00 (104.70 to 105.70): E

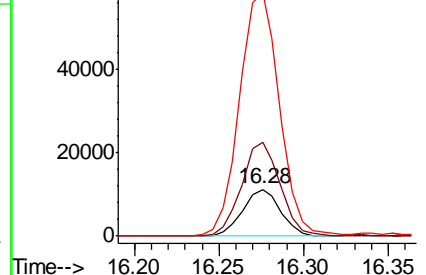
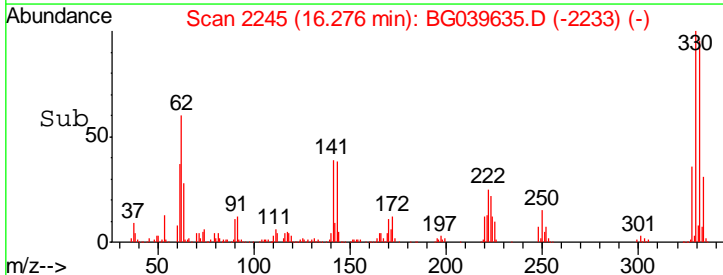


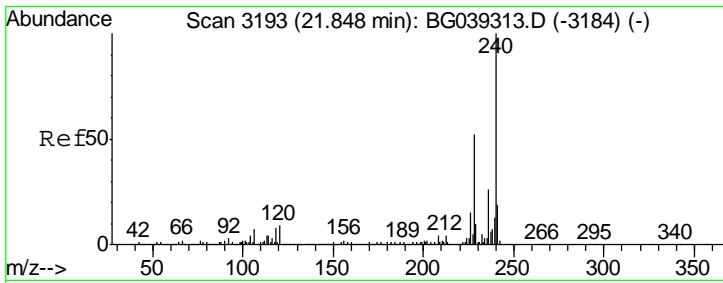
#67
 4-Bromophenyl-phenylether
 Concen: 4.712 ng
 RT: 16.28 min Scan# 2245
 Delta R.T. -0.46 min
 Lab File: BG039635.D
 Acq: 27 Feb 2019 15:20

Tgt Ion	Resp	Lower	Upper
248	17426		
250	201.1	77.6	116.4#
141	522.4	63.9	95.9#



Abundance Ion 248.00 (247.70 to 248.70): E
 Ion 250.00 (249.70 to 250.70): E
 Ion 141.00 (140.70 to 141.70): E

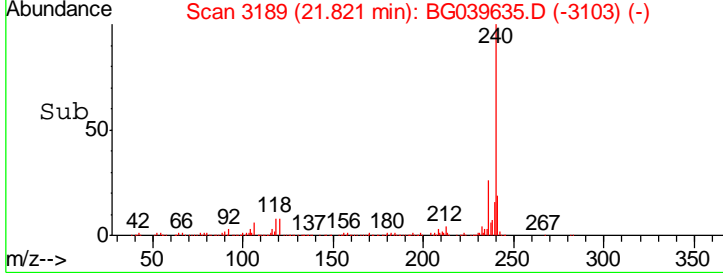
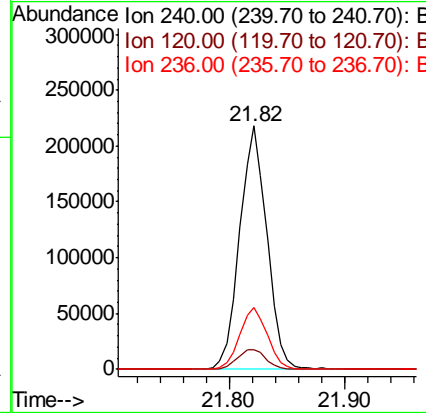
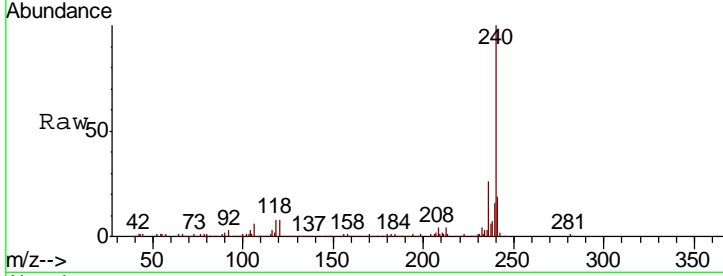




#76
 Chrysene-d12
 Concen: 20.000 ng
 RT: 21.82 min Scan# 3189
 Delta R.T. -0.03 min
 Lab File: BG039635.D
 Acq: 27 Feb 2019 15:20

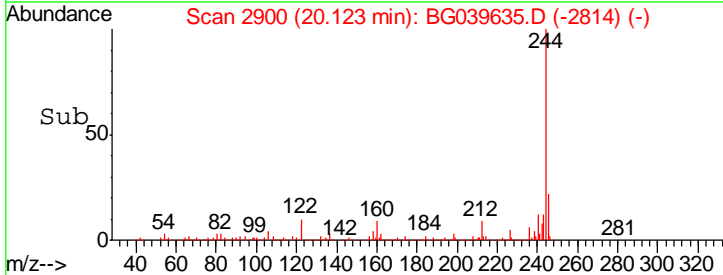
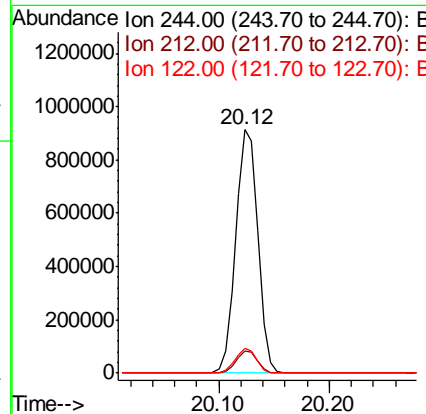
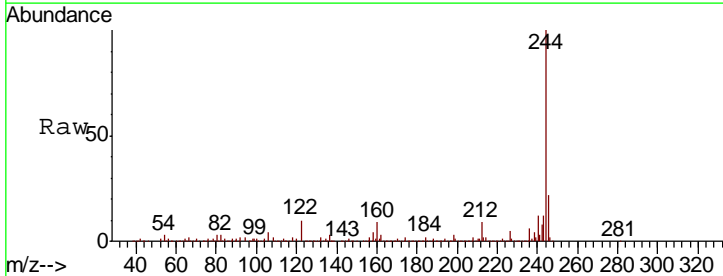
Instrument :
 BNA_G
 ClientSampled :
 B-8(7.5-8.5)

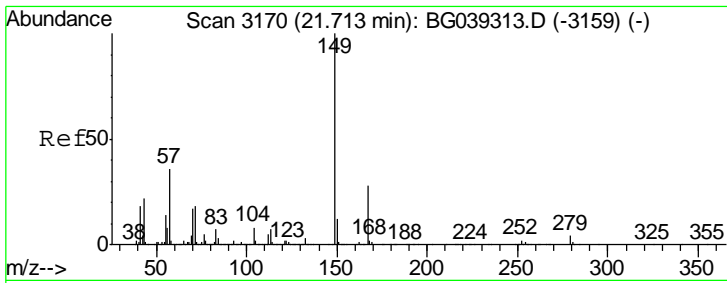
Tgt Ion	Resp	Lower	Upper
240	100		
120	8.1	7.0	10.6
236	25.6	21.0	31.4



#79
 Terphenyl-d14
 Concen: 76.507 ng
 RT: 20.12 min Scan# 2900
 Delta R.T. -0.03 min
 Lab File: BG039635.D
 Acq: 27 Feb 2019 15:20

Tgt Ion	Resp	Lower	Upper
244	100		
212	9.4	7.3	10.9
122	10.0	8.4	12.6

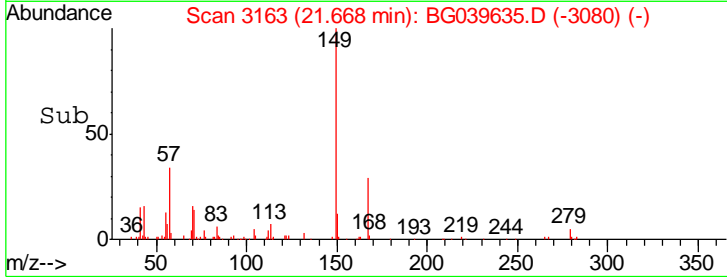
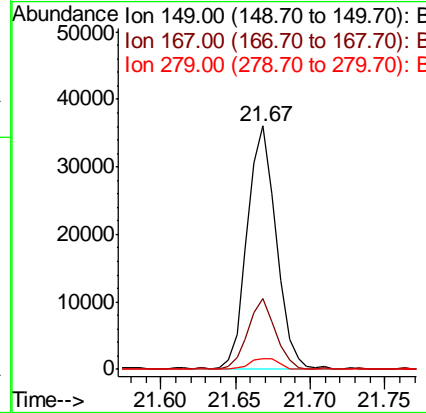
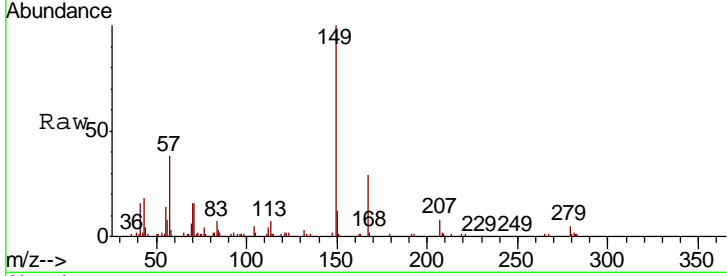




#84
 Bis(2-ethylhexyl)phthalate
 Concen: 3.638 ng
 RT: 21.67 min Scan# 3163
 Delta R.T. -0.04 min
 Lab File: BG039635.D
 Acq: 27 Feb 2019 15:20

Instrument :
 BNA_G
 ClientSampled :
 B-8(7.5-8.5)

Tgt Ion	Resp	Lower	Upper
149	100		
167	29.1	22.6	34.0
279	4.5	3.5	5.3



#87
 Perylene-d12
 Concen: 20.000 ng
 RT: 25.20 min Scan# 3764
 Delta R.T. -0.04 min
 Lab File: BG039635.D
 Acq: 27 Feb 2019 15:20

Tgt Ion	Resp	Lower	Upper
264	100		
260	22.7	18.2	27.4
265	21.7	18.5	27.7

