

Data Path : Z:\SVOASRV\HPCHEM1\BNA G\DATA\BG032420\  
 Data File : BG044933.D  
 Acq On : 24 Mar 2020 16:49  
 Operator : CG/JU  
 Sample : L2012-01  
 Misc :  
 ALS Vial : 7 Sample Multiplier: 1

Instrument :  
 BNA\_G  
 ClientSampleId :  
 GHD1-GW-03-17

Quant Time: Mar 25 03:08:44 2020  
 Quant Method : Z:\SVOASRV\HPCHEM1\BNA G\METHODS\8270-BG031020.M  
 Quant Title : ASP BNA STANDARDS FOR 5 POINT CALIBRATION  
 QLast Update : Mon Mar 23 07:18:46 2020  
 Response via : Initial Calibration

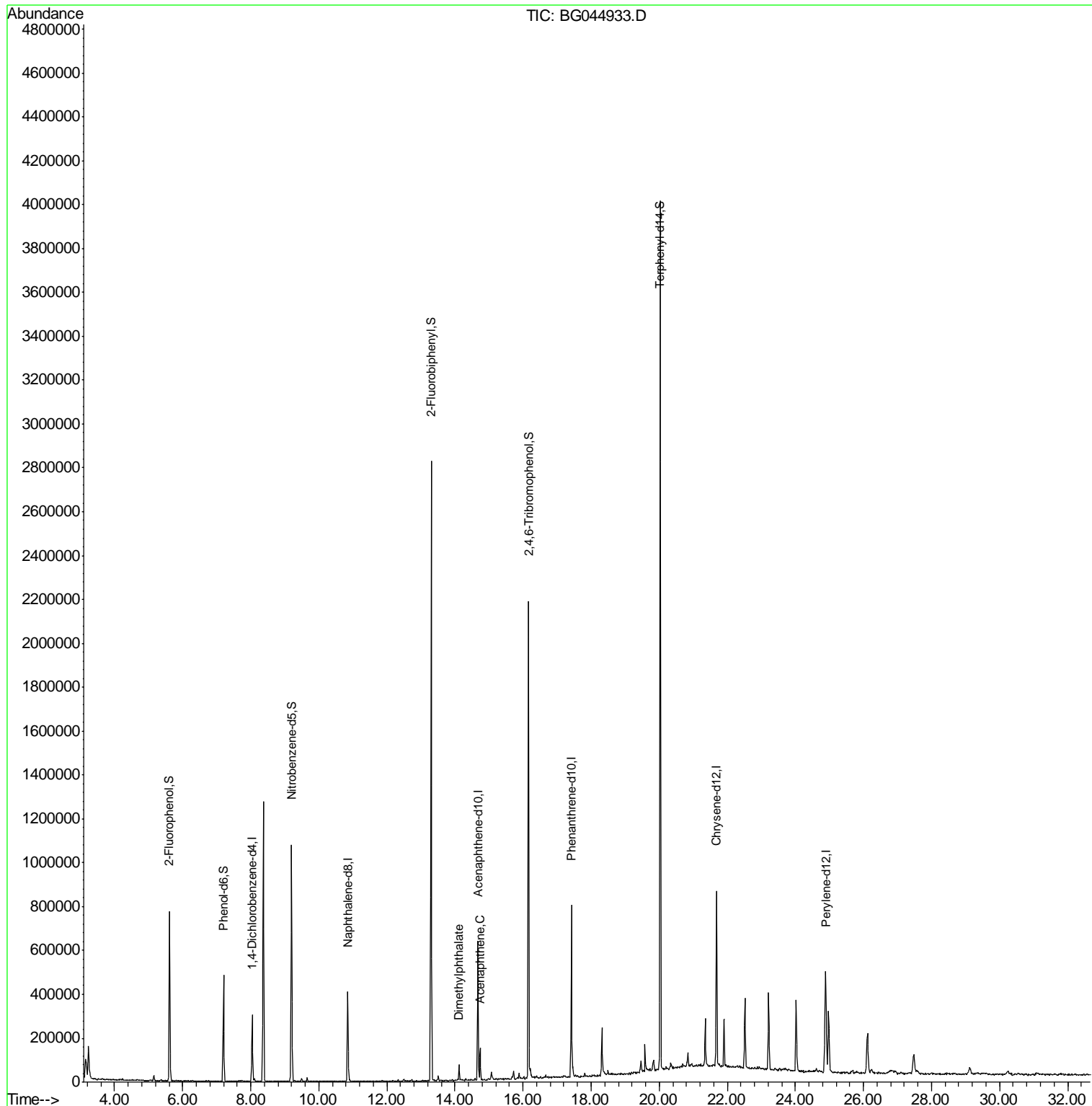
Internal Standards	R.T.	QIon	Response	Conc	Units	Dev(Min)
1) 1,4-Dichlorobenzene-d4	8.04	152	90061	20.00	ng	-0.01
21) Naphthalene-d8	10.85	136	345454	20.00	ng	-0.01
39) Acenaphthene-d10	14.67	164	225732	20.00	ng	-0.01
64) Phenanthrene-d10	17.42	188	494250	20.00	ng	-0.01
76) Chrysene-d12	21.68	240	474675	20.00	ng	-0.02
87) Perylene-d12	24.89	264	513582	20.00	ng	-0.02
System Monitoring Compounds						
5) 2-Fluorophenol	5.61	112	353948	61.18	ng	0.00
7) Phenol-d6	7.20	99	307470	36.58	ng	0.00
23) Nitrobenzene-d5	9.20	82	694585	88.23	ng	0.00
42) 2,4,6-Tribromophenol	16.16	330	436723	147.76	ng	-0.01
45) 2-Fluorobiphenyl	13.30	172	1477163	93.71	ng	0.00
79) Terphenyl-d14	20.03	244	1988103	78.35	ng	0.00
Target Compounds						
50) Dimethylphthalate	14.12	163	45492	2.530	ng	99
52) Acenaphthene	14.73	154	55089	3.896	ng	95

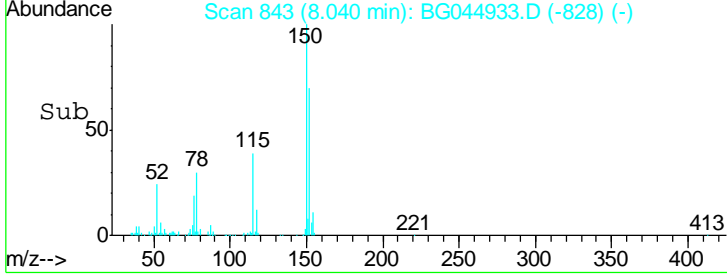
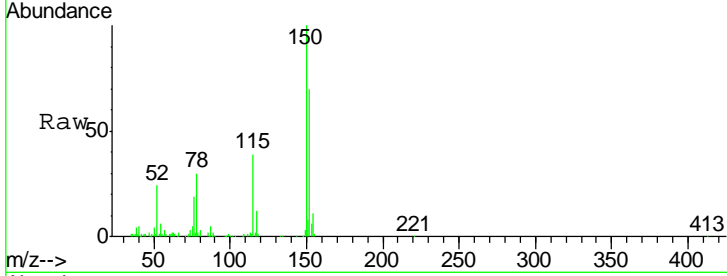
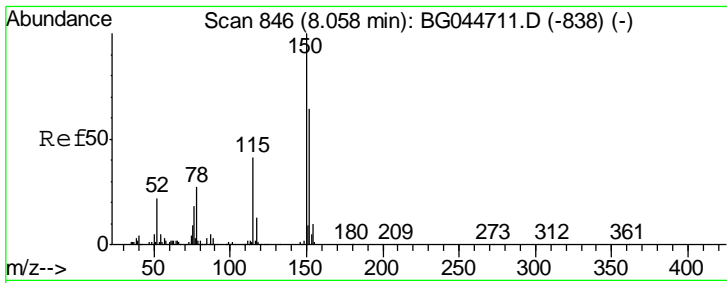
(#) = qualifier out of range (m) = manual integration (+) = signals summed

Data Path : Z:\SVOASRV\HPCHEM1\BNA G\DATA\BG032420\  
 Data File : BG044933.D  
 Acq On : 24 Mar 2020 16:49  
 Operator : CG/JU  
 Sample : L2012-01  
 Misc :  
 ALS Vial : 7 Sample Multiplier: 1

Instrument :  
 BNA\_G  
 ClientSampleId :  
 GHD1-GW-03-17

Quant Time: Mar 25 03:08:44 2020  
 Quant Method : Z:\SVOASRV\HPCHEM1\BNA G\METHODS\8270-BG031020.M  
 Quant Title : ASP BNA STANDARDS FOR 5 POINT CALIBRATION  
 QLast Update : Mon Mar 23 07:18:46 2020  
 Response via : Initial Calibration

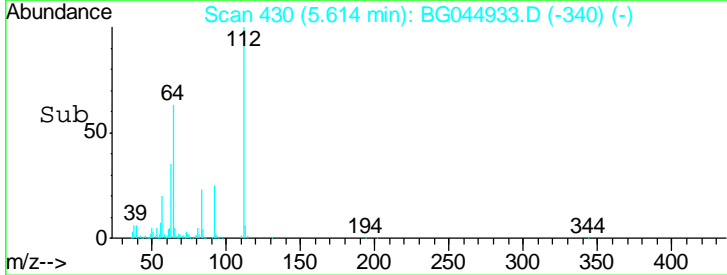
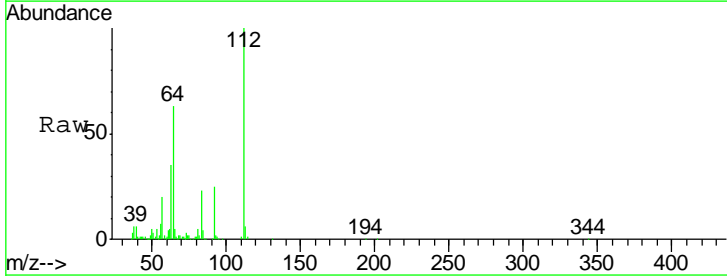
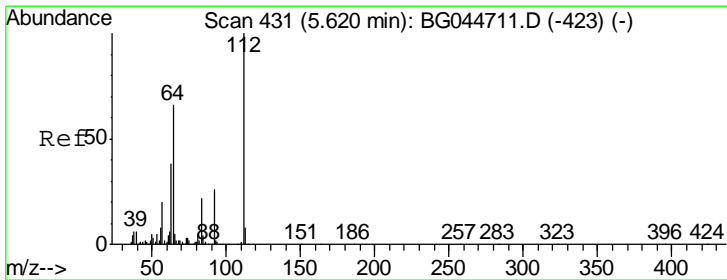
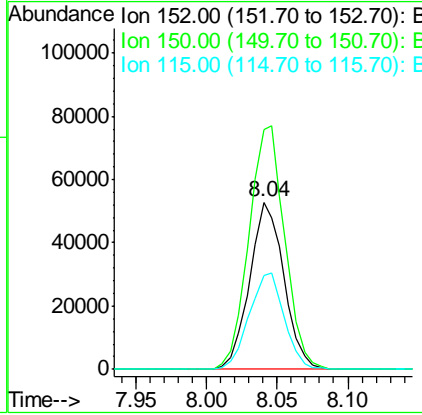




#1  
 1,4-Dichlorobenzene-d4  
 Concen: 20.000 ng  
 RT: 8.04 min Scan# 843  
 Delta R.T. -0.01 min  
 Lab File: BG044933.D  
 Acq: 24 Mar 2020 16:49

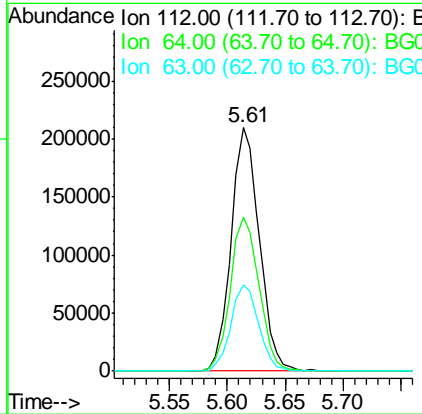
**Instrument :**  
 BNA\_G  
**ClientSampleId :**  
 GHD1-GW-03-17

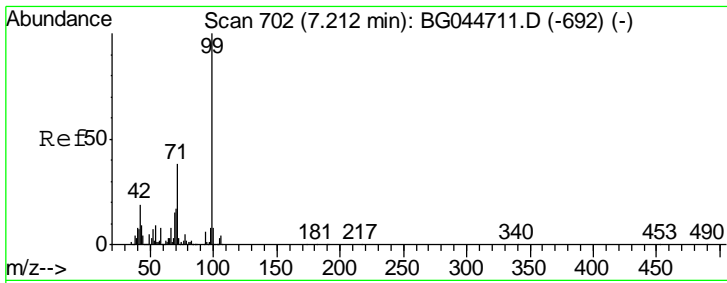
Tgt Ion	Resp	Lower	Upper
152	90061		
150	143.7	128.8	193.2
115	55.8	52.6	79.0



#5  
 2-Fluorophenol  
 Concen: 61.179 ng  
 RT: 5.61 min Scan# 430  
 Delta R.T. 0.00 min  
 Lab File: BG044933.D  
 Acq: 24 Mar 2020 16:49

Tgt Ion	Resp	Lower	Upper
112	353948		
64	63.0	53.4	80.2
63	35.3	29.4	44.2

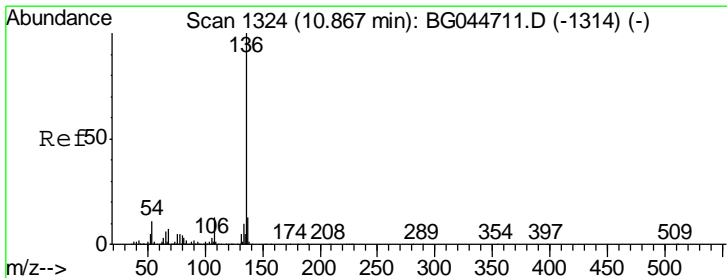
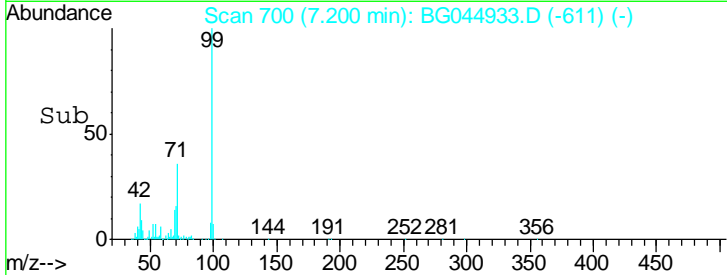
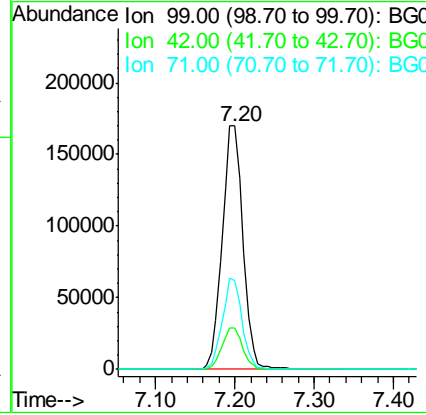
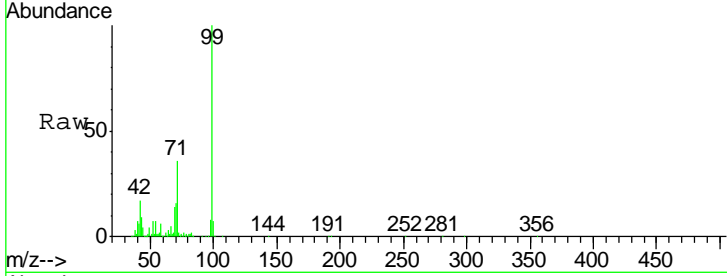




#7  
 Phenol-d6  
 Concen: 36.578 ng  
 RT: 7.20 min Scan# 700  
 Delta R.T. -0.01 min  
 Lab File: BG044933.D  
 Acq: 24 Mar 2020 16:49

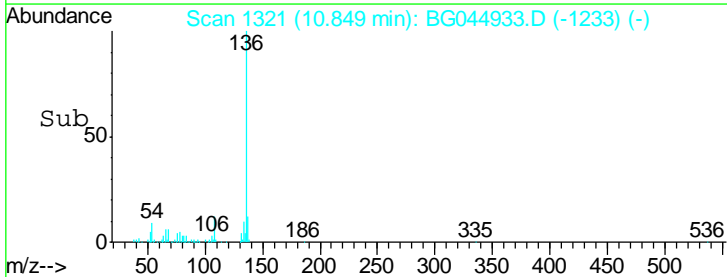
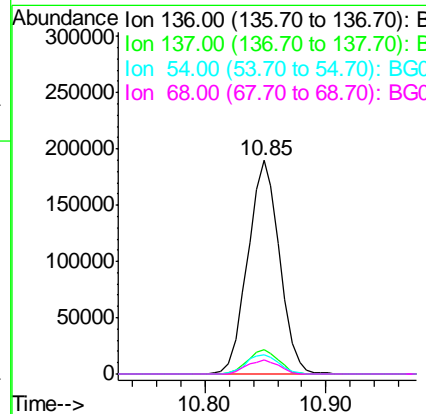
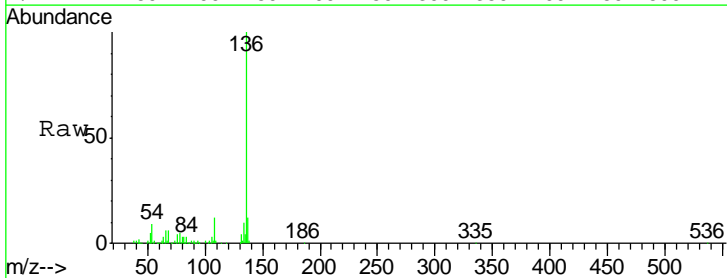
Instrument :  
 BNA\_G  
 ClientSampleId :  
 GHD1-GW-03-17

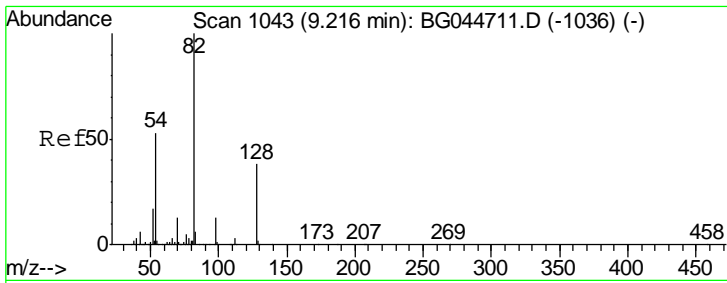
Tgt Ion	Resp	Lower	Upper
99	307470		
42	16.7	12.6	19.0
71	36.5	29.0	43.4



#21  
 Naphthalene-d8  
 Concen: 20.000 ng  
 RT: 10.85 min Scan# 1321  
 Delta R.T. -0.01 min  
 Lab File: BG044933.D  
 Acq: 24 Mar 2020 16:49

Tgt Ion	Resp	Lower	Upper
136	345454		
137	11.6	9.8	14.6
54	8.7	7.9	11.9
68	6.4	5.4	8.0

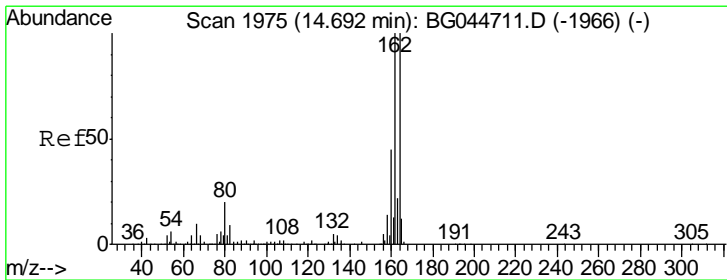
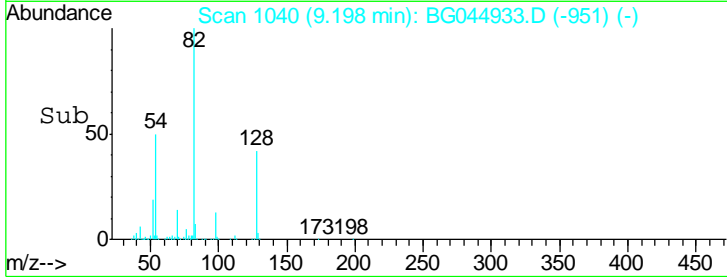
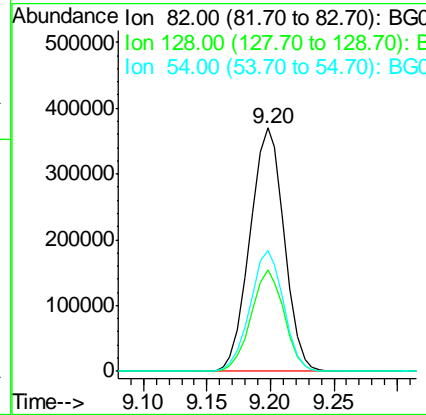
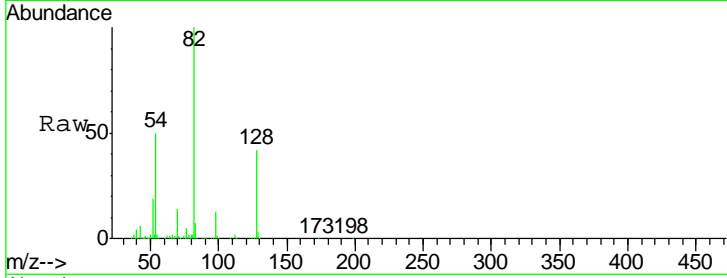




#23  
 Nitrobenzene-d5  
 Concen: 88.230 ng  
 RT: 9.20 min Scan# 1040  
 Delta R.T. -0.01 min  
 Lab File: BG044933.D  
 Acq: 24 Mar 2020 16:49

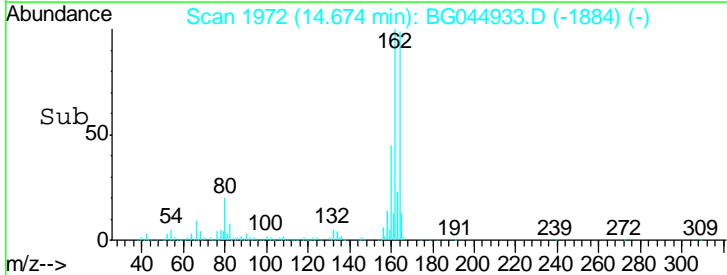
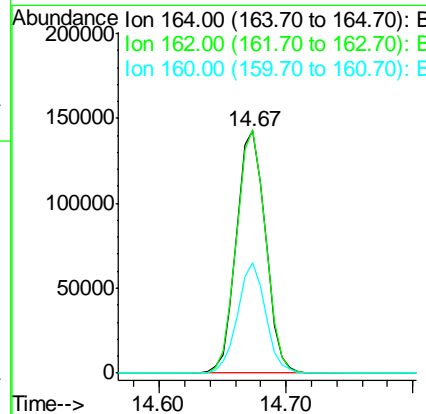
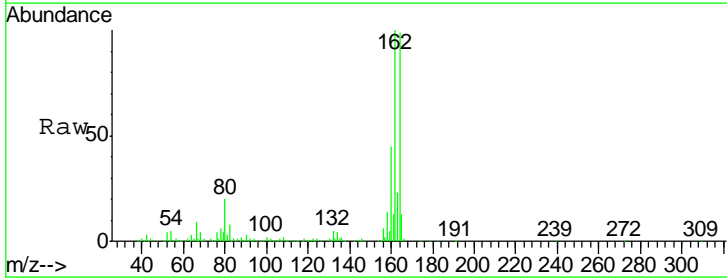
Instrument :  
 BNA\_G  
 ClientSampleId :  
 GHD1-GW-03-17

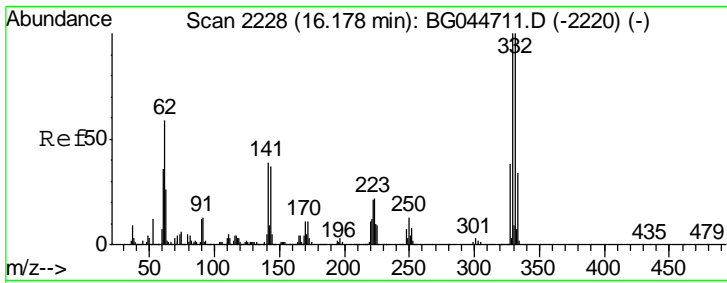
Tgt Ion	Resp	Lower	Upper
82	694585		
128	41.7	30.6	46.0
54	49.8	37.1	55.7



#39  
 Acenaphthene-d10  
 Concen: 20.000 ng  
 RT: 14.67 min Scan# 1972  
 Delta R.T. -0.01 min  
 Lab File: BG044933.D  
 Acq: 24 Mar 2020 16:49

Tgt Ion	Resp	Lower	Upper
164	225732		
162	100.6	76.7	115.1
160	45.6	35.0	52.4

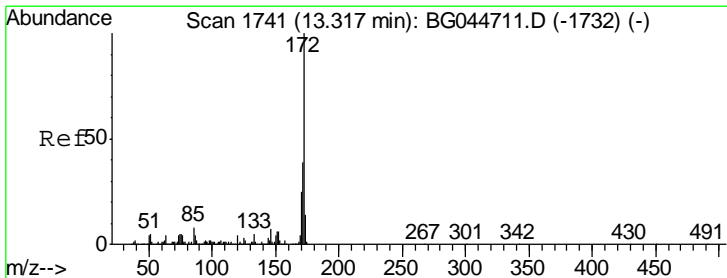
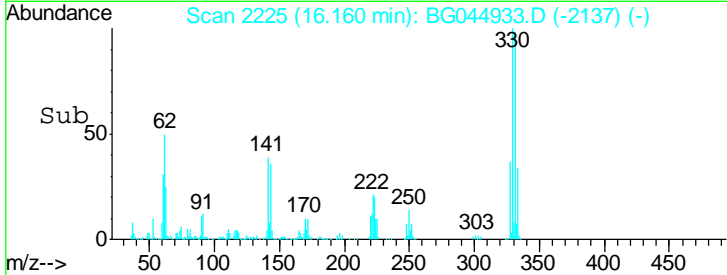
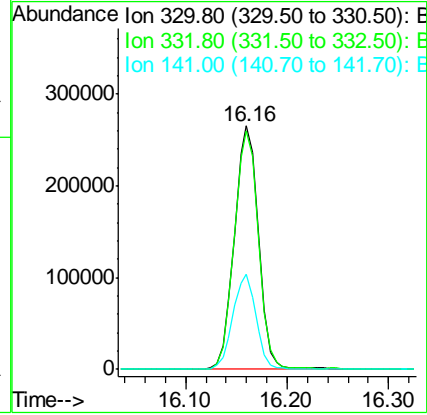
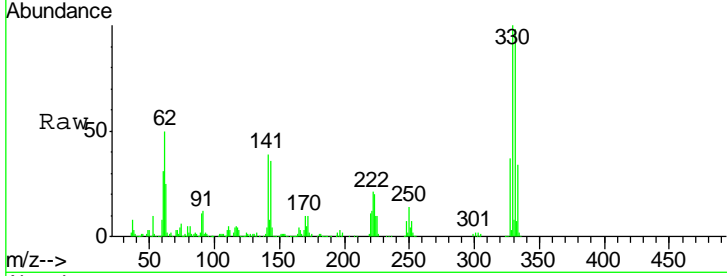




#42  
 2,4,6-Tribromophenol  
 Concen: 147.760 ng  
 RT: 16.16 min Scan# 2225  
 Delta R.T. -0.01 min  
 Lab File: BG044933.D  
 Acq: 24 Mar 2020 16:49

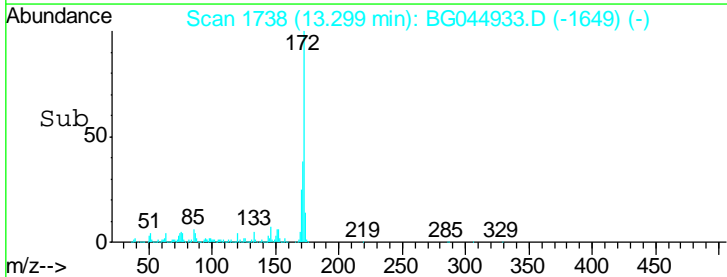
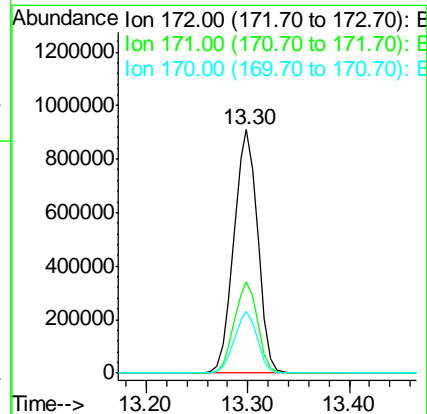
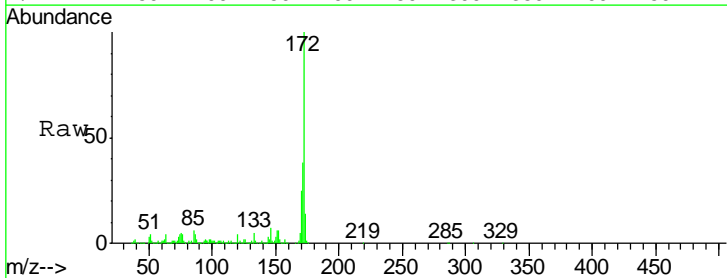
Instrument :  
 BNA\_G  
 ClientSampleId :  
 GHD1-GW-03-17

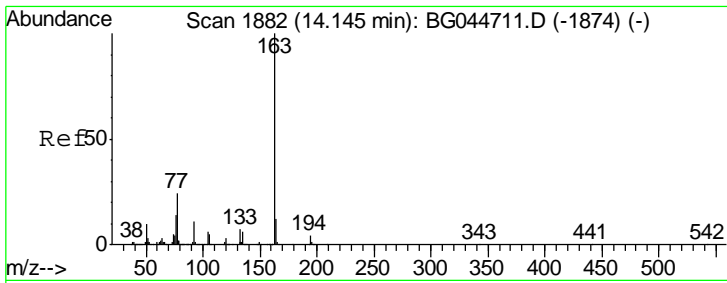
Tgt Ion	Resp	Lower	Upper
330	436723		
332	100	77.8	116.6
141	37.5	29.5	44.3



#45  
 2-Fluorobiphenyl  
 Concen: 93.711 ng  
 RT: 13.30 min Scan# 1738  
 Delta R.T. -0.01 min  
 Lab File: BG044933.D  
 Acq: 24 Mar 2020 16:49

Tgt Ion	Resp	Lower	Upper
172	1477163		
171	100	28.7	43.1
170	37.7	19.0	28.6

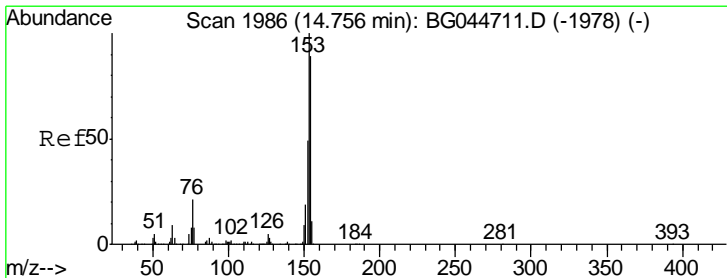
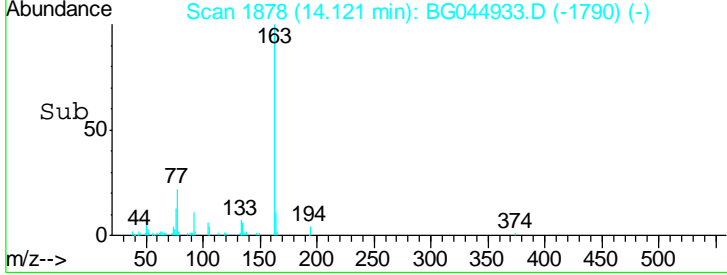
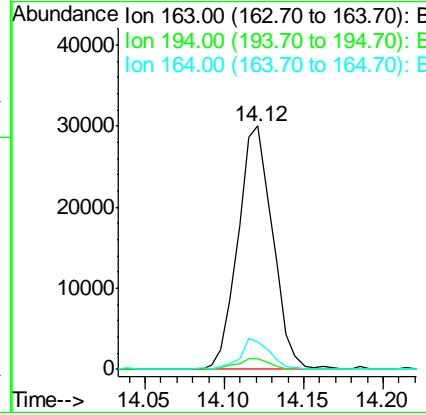
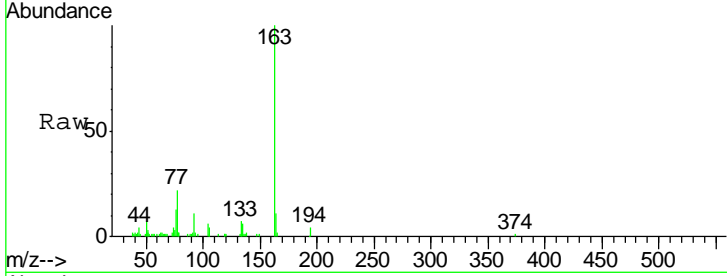




#50  
 Dimethylphthalate  
 Concen: 2.530 ng  
 RT: 14.12 min Scan# 1878  
 Delta R.T. -0.01 min  
 Lab File: BG044933.D  
 Acq: 24 Mar 2020 16:49

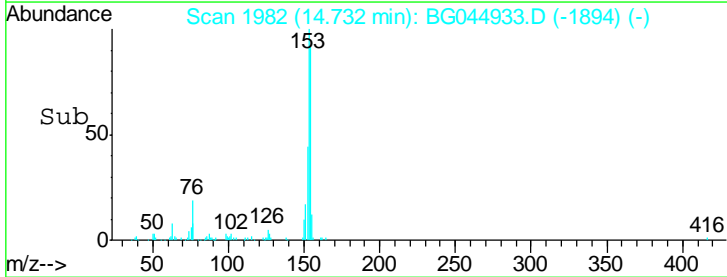
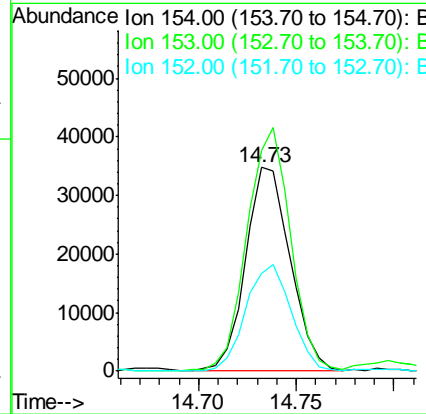
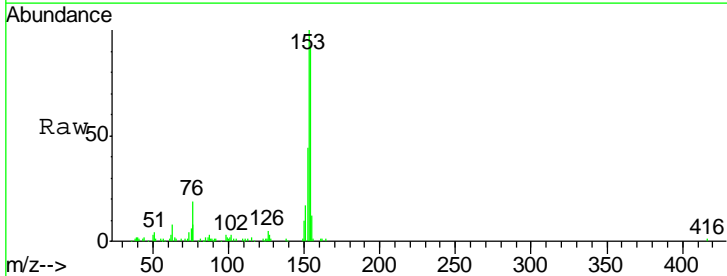
Instrument :  
 BNA\_G  
 ClientSampleId :  
 GHD1-GW-03-17

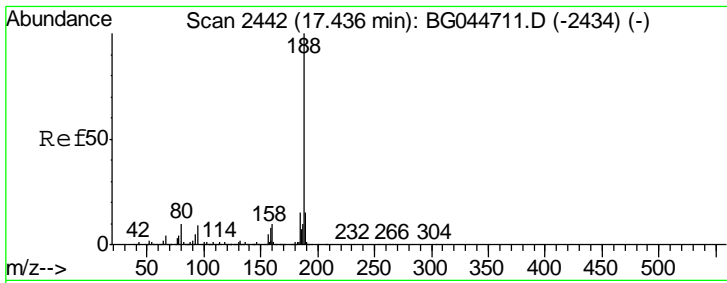
Tgt Ion	Resp	Lower	Upper
163	45492		
194	4.2	3.7	5.5
164	11.1	9.1	13.7



#52  
 Acenaphthene  
 Concen: 3.896 ng  
 RT: 14.73 min Scan# 1982  
 Delta R.T. -0.01 min  
 Lab File: BG044933.D  
 Acq: 24 Mar 2020 16:49

Tgt Ion	Resp	Lower	Upper
154	55089		
153	108.1	89.0	133.6
152	47.8	43.0	64.6

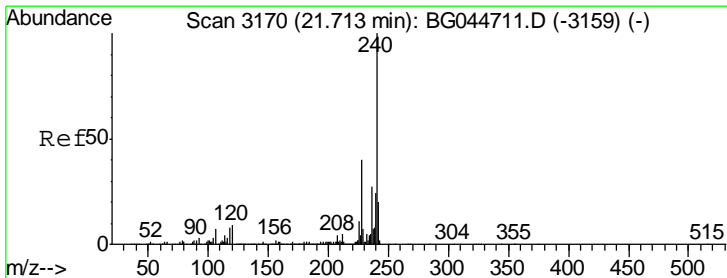
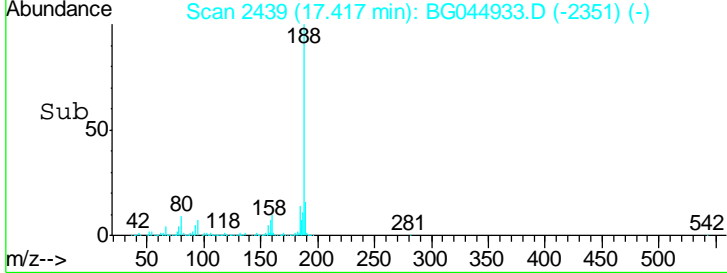
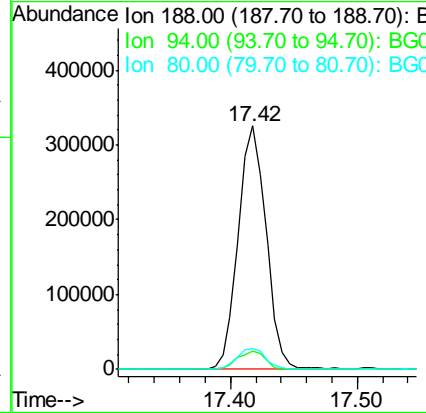
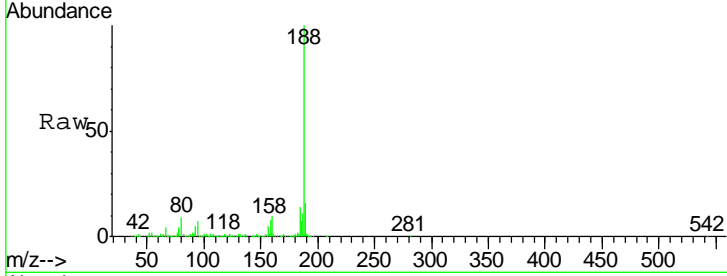




#64  
 Phenanthrene-d10  
 Concen: 20.000 ng  
 RT: 17.42 min Scan# 2439  
 Delta R.T. -0.01 min  
 Lab File: BG044933.D  
 Acq: 24 Mar 2020 16:49

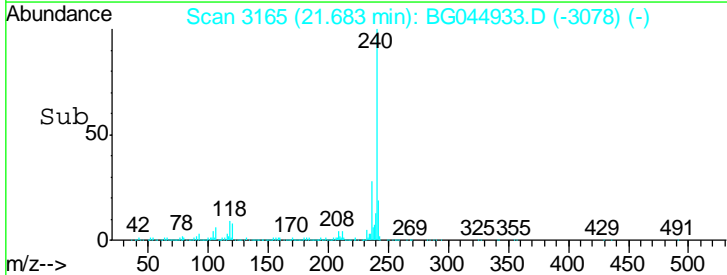
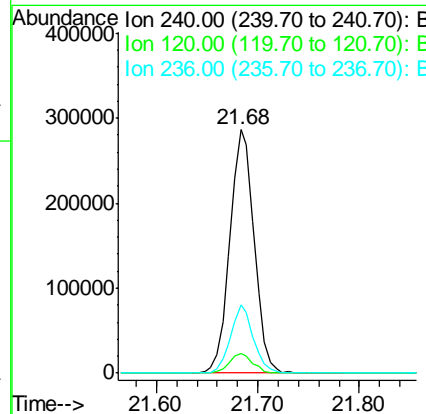
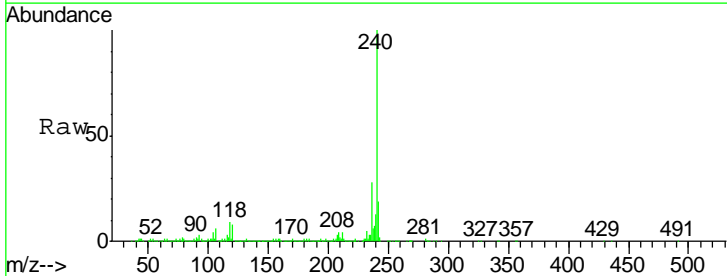
Instrument :  
 BNA\_G  
 ClientSampleId :  
 GHD1-GW-03-17

Tgt Ion	Resp	Lower	Upper
188	494250		
94	7.3	7.3	10.9
80	8.7	8.0	12.0

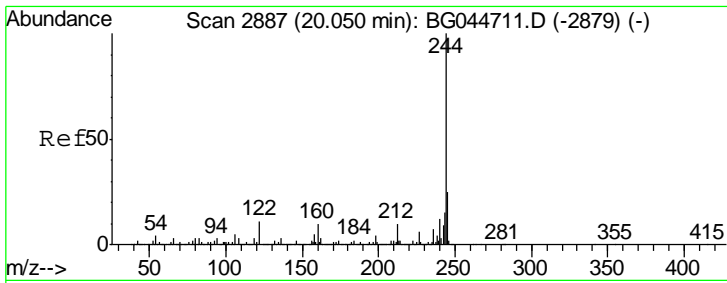


#76  
 Chrysene-d12  
 Concen: 20.000 ng  
 RT: 21.68 min Scan# 3165  
 Delta R.T. -0.02 min  
 Lab File: BG044933.D  
 Acq: 24 Mar 2020 16:49

Tgt Ion	Resp	Lower	Upper
240	474675		
120	7.8	6.7	10.1
236	28.1	21.5	32.3



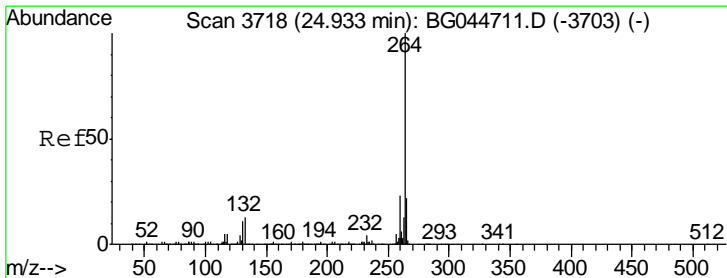
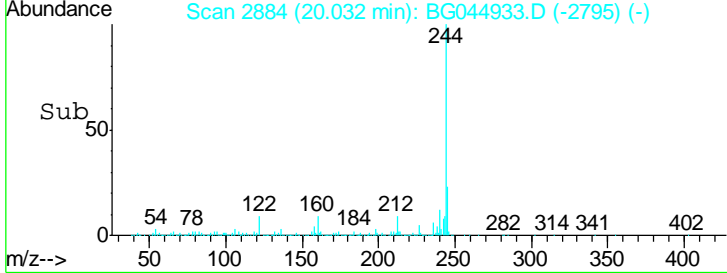
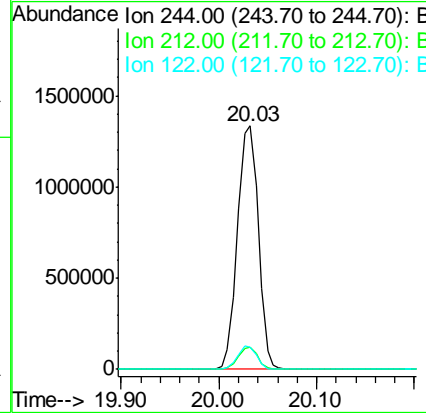
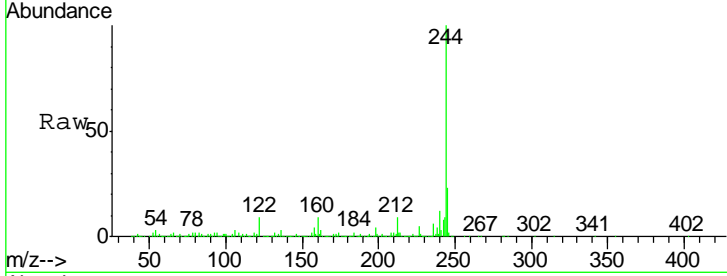




#79  
 Terphenyl-d14  
 Concen: 78.345 ng  
 RT: 20.03 min Scan# 2884  
 Delta R.T. -0.01 min  
 Lab File: BG044933.D  
 Acq: 24 Mar 2020 16:49

**Instrument :**  
 BNA\_G  
**ClientSampled :**  
 GHD1-GW-03-17

Tgt Ion	Resp	Lower	Upper
244	1988103		
212	9.2	7.7	11.5
122	9.2	8.6	12.8



#87  
 Perylene-d12  
 Concen: 20.000 ng  
 RT: 24.89 min Scan# 3711  
 Delta R.T. -0.02 min  
 Lab File: BG044933.D  
 Acq: 24 Mar 2020 16:49

Tgt Ion	Resp	Lower	Upper
264	513582		
260	23.5	18.1	27.1
265	23.4	17.1	25.7

