

Data Path : Z:\svoasrv\HPCHEM1\BNA\_G\Data\BG040522\  
 Data File : BG053045.D  
 Acq On : 5 Apr 2022 23:44  
 Operator : CG/JU  
 Sample : N2257-01 5X  
 Misc :  
 ALS Vial : 13 Sample Multiplier: 1

Instrument :  
 BNA\_G  
 ClientSampleId :  
 TP-1

Integration Parameters: rteint.p

Integrator: RTE  
 Smoothing : ON Filtering: 5  
 Sampling : 1 Min Area: 3 % of largest Peak  
 Start Thrs: 0.2 Max Peaks: 100  
 Stop Thrs : 0 Peak Location: TOP

If leading or trailing edge < 100 prefer < Baseline drop else tangent >  
 Peak separation: 5

Method : Z:\svoasrv\HPCHEM1\BNA\_G\Methods\8270-BG031522.M  
 Title : ASP BNA STANDARDS FOR 5 POINT CALIBRATION

Signal : TIC: BG053045.D\data.ms

peak #	R.T. min	first scan	max scan	last scan	PK TY	peak height	corr. area	corr. % max.	% of total
1	5.691	386	392	403	rBV	121295	201821	10.66%	0.861%
2	7.277	655	662	672	rBV	132201	243004	12.84%	1.037%
3	8.129	799	807	818	rVB	200086	361093	19.08%	1.541%
4	9.286	997	1004	1012	rBV	87932	156566	8.27%	0.668%
5	10.943	1276	1286	1291	rBV	277760	514712	27.20%	2.196%
6	10.990	1291	1294	1302	rVB	97351	165037	8.72%	0.704%
7	12.588	1559	1566	1572	rBV	45249	74938	3.96%	0.320%
8	12.805	1594	1603	1610	rVB	40667	66942	3.54%	0.286%
9	13.375	1692	1700	1707	rBV	190485	299792	15.84%	1.279%
10	13.580	1729	1735	1741	rVB3	21320	36035	1.90%	0.154%
11	13.915	1786	1792	1801	rBV3	17007	42783	2.26%	0.183%
12	14.074	1813	1819	1823	rBV4	33045	59624	3.15%	0.254%
13	14.127	1823	1828	1835	rVB2	23298	36222	1.91%	0.155%
14	14.309	1854	1859	1862	rBV2	17152	25547	1.35%	0.109%
15	14.473	1882	1887	1900	rBV	55851	99194	5.24%	0.423%
16	14.749	1923	1934	1940	rBV	423989	693410	36.64%	2.959%
17	14.814	1940	1945	1951	rVV2	59544	108489	5.73%	0.463%
18	14.955	1961	1969	1978	rBV4	6449	19030	1.01%	0.081%
19	15.143	1995	2001	2008	rVB	97236	160111	8.46%	0.683%
20	15.219	2008	2014	2020	rBV3	15423	25469	1.35%	0.109%
21	15.360	2033	2038	2043	rVV5	14970	26220	1.39%	0.112%
22	15.419	2043	2048	2053	rVB2	15306	24251	1.28%	0.103%
23	15.531	2059	2067	2070	rBV5	14372	29809	1.57%	0.127%
24	15.789	2106	2111	2121	rVB	135556	225471	11.91%	0.962%
25	16.083	2156	2161	2170	rVB	54078	88537	4.68%	0.378%
26	16.230	2180	2186	2194	rVB	205480	346650	18.32%	1.479%
27	16.324	2195	2202	2209	rVB4	14967	31944	1.69%	0.136%
28	16.470	2218	2227	2231	rBV7	16640	36977	1.95%	0.158%
29	16.799	2270	2283	2287	rBV5	37419	95933	5.07%	0.409%
30	16.841	2287	2290	2296	rVB4	18735	33606	1.78%	0.143%
31	16.940	2303	2307	2313	rVB5	18557	29369	1.55%	0.125%
32	17.023	2313	2321	2325	rBV5	40784	77184	4.08%	0.329%
33	17.064	2325	2328	2331	rVB2	20725	29823	1.58%	0.127%
34	17.140	2337	2341	2349	rVB	59364	104977	5.55%	0.448%
35	17.222	2349	2355	2361	rBV3	37234	86989	4.60%	0.371%
36	17.311	2365	2370	2379	rVB	79120	133230	7.04%	0.568%

Data Path : Z:\svoasrv\HPCHEM1\BNA\_G\Data\BG040522\  
 Data File : BG053045.D  
 Acq On : 5 Apr 2022 23:44  
 Operator : CG/JU  
 Sample : N2257-01 5X  
 Misc :  
 ALS Vial : 13 Sample Multiplier: 1

Instrument :  
 BNA\_G  
 ClientSampleId :  
 TP-1

Integration Parameters: rteint.p  
 Integrator: RTE  
 Smoothing : ON  
 Sampling : 1  
 Start Thrs : 0.2  
 Stop Thrs : 0  
 Filtering: 5  
 Min Area: 3 % of largest Peak  
 Max Peaks: 100  
 Peak Location: TOP

If leading or trailing edge < 100 prefer < Baseline drop else tangent >  
 Peak separation: 5

Method : Z:\svoasrv\HPCHEM1\BNA\_G\Methods\8270-BG031522.M  
 Title : ASP BNA STANDARDS FOR 5 POINT CALIBRATION

37	17.493	2395	2401	2404	rBV	470446	732804	38.72%	3.127%
38	17.534	2404	2408	2415	rVV	1097143	1759107	92.94%	7.506%
39	17.592	2415	2418	2419	rVV2	27827	30918	1.63%	0.132%
40	17.622	2419	2423	2428	rVV	197809	307407	16.24%	1.312%
41	17.675	2428	2432	2438	rVB4	30147	54824	2.90%	0.234%
42	17.763	2443	2447	2451	rBV2	14545	19637	1.04%	0.084%
43	17.886	2458	2468	2473	rBV2	94301	202253	10.69%	0.863%
44	18.004	2485	2488	2494	rBV3	26430	42167	2.23%	0.180%
45	18.074	2496	2500	2508	rVB6	26664	46999	2.48%	0.201%
46	18.221	2521	2525	2531	rVB2	21127	38319	2.02%	0.164%
47	18.292	2533	2537	2539	rVV4	14750	19040	1.01%	0.081%
48	18.368	2541	2550	2554	rVV	170709	286294	15.13%	1.222%
49	18.415	2554	2558	2565	rVB	225198	337226	17.82%	1.439%
50	18.497	2565	2572	2577	rBV	76134	128999	6.82%	0.550%
51	18.568	2577	2584	2587	rBV3	212638	420061	22.19%	1.792%
52	18.597	2587	2589	2594	rVV2	113309	137211	7.25%	0.585%
53	18.662	2597	2600	2604	rVV4	23047	34310	1.81%	0.146%
54	18.709	2604	2608	2612	rVB4	20327	31711	1.68%	0.135%
55	18.861	2629	2634	2637	rVV	120297	179912	9.51%	0.768%
56	18.902	2637	2641	2646	rVB	118131	164863	8.71%	0.703%
57	18.985	2652	2655	2660	rVB3	17752	27282	1.44%	0.116%
58	19.102	2667	2675	2680	rBV4	76482	134295	7.10%	0.573%
59	19.155	2682	2684	2687	rVV2	32813	35764	1.89%	0.153%
60	19.190	2688	2690	2694	rVB	29629	32272	1.71%	0.138%
61	19.278	2699	2705	2710	rBV2	93758	181893	9.61%	0.776%
62	19.343	2713	2716	2718	rBV3	32488	33401	1.76%	0.143%
63	19.414	2724	2728	2736	rVB2	78771	142474	7.53%	0.608%
64	19.543	2744	2750	2755	rVB	1338192	1892643	100.00%	8.076%
65	19.596	2756	2759	2762	rVV3	28390	38311	2.02%	0.163%
66	19.637	2763	2766	2770	rVB2	51191	65234	3.45%	0.278%
67	19.690	2772	2775	2778	rVV	50995	61827	3.27%	0.264%
68	19.725	2779	2781	2785	rVV3	38486	57467	3.04%	0.245%
69	19.784	2788	2791	2799	rVV	61924	112929	5.97%	0.482%
70	19.872	2801	2806	2807	rVV	232737	325293	17.19%	1.388%
71	19.907	2807	2812	2818	rVV	1121969	1746445	92.28%	7.452%
72	19.972	2819	2823	2829	rVB2	82920	134109	7.09%	0.572%
73	20.089	2838	2843	2847	rVB2	234221	349035	18.44%	1.489%
74	20.136	2848	2851	2856	rVB	68402	106943	5.65%	0.456%
75	20.230	2860	2867	2872	rBV3	113233	297669	15.73%	1.270%
76	20.389	2891	2894	2899	rVB	189869	260509	13.76%	1.112%

Data Path : Z:\svoasrv\HPCHEM1\BNA\_G\Data\BG040522\  
 Data File : BG053045.D  
 Acq On : 5 Apr 2022 23:44  
 Operator : CG/JU  
 Sample : N2257-01 5X  
 Misc :  
 ALS Vial : 13 Sample Multiplier: 1

Instrument :  
 BNA\_G  
 ClientSampleId :  
 TP-1

Integration Parameters: rteint.p  
 Integrator: RTE  
 Smoothing : ON Filtering: 5  
 Sampling : 1 Min Area: 3 % of largest Peak  
 Start Thrs: 0.2 Max Peaks: 100  
 Stop Thrs : 0 Peak Location: TOP

If leading or trailing edge < 100 prefer < Baseline drop else tangent >  
 Peak separation: 5

Method : Z:\svoasrv\HPCHEM1\BNA\_G\Methods\8270-BG031522.M  
 Title : ASP BNA STANDARDS FOR 5 POINT CALIBRATION

77	20.489	2907	2911	2915	rBV	98743	144456	7.63%	0.616%
78	20.547	2915	2921	2925	rVB2	115496	237694	12.56%	1.014%
79	20.688	2942	2945	2949	rBV	70318	104197	5.51%	0.445%
80	20.735	2950	2953	2957	rVB2	78045	96812	5.12%	0.413%
81	21.158	3021	3025	3032	rVB	113933	181232	9.58%	0.773%
82	21.346	3051	3057	3061	rBV3	90644	188083	9.94%	0.803%
83	21.393	3061	3065	3069	rVV	112949	182815	9.66%	0.780%
84	21.446	3069	3074	3078	rVV2	99449	189802	10.03%	0.810%
85	21.499	3079	3083	3091	rVB3	115848	213047	11.26%	0.909%
86	21.763	3122	3128	3135	rBV2	684426	1727215	91.26%	7.370%
87	21.828	3135	3139	3150	rVB	479231	870502	45.99%	3.714%
88	21.981	3162	3165	3172	rVB3	53420	86286	4.56%	0.368%
89	22.192	3196	3201	3207	rBV3	69970	150995	7.98%	0.644%
90	22.592	3267	3269	3276	rVB2	65171	117207	6.19%	0.500%
91	24.043	3506	3516	3522	rBV	309681	1046579	55.30%	4.466%
92	24.295	3555	3559	3567	rVB2	57196	132425	7.00%	0.565%
93	24.777	3635	3641	3655	rVB2	177740	573833	30.32%	2.449%
94	24.930	3660	3667	3678	rVB	280441	789508	41.71%	3.369%
95	25.088	3686	3694	3702	rBV	217171	602465	31.83%	2.571%

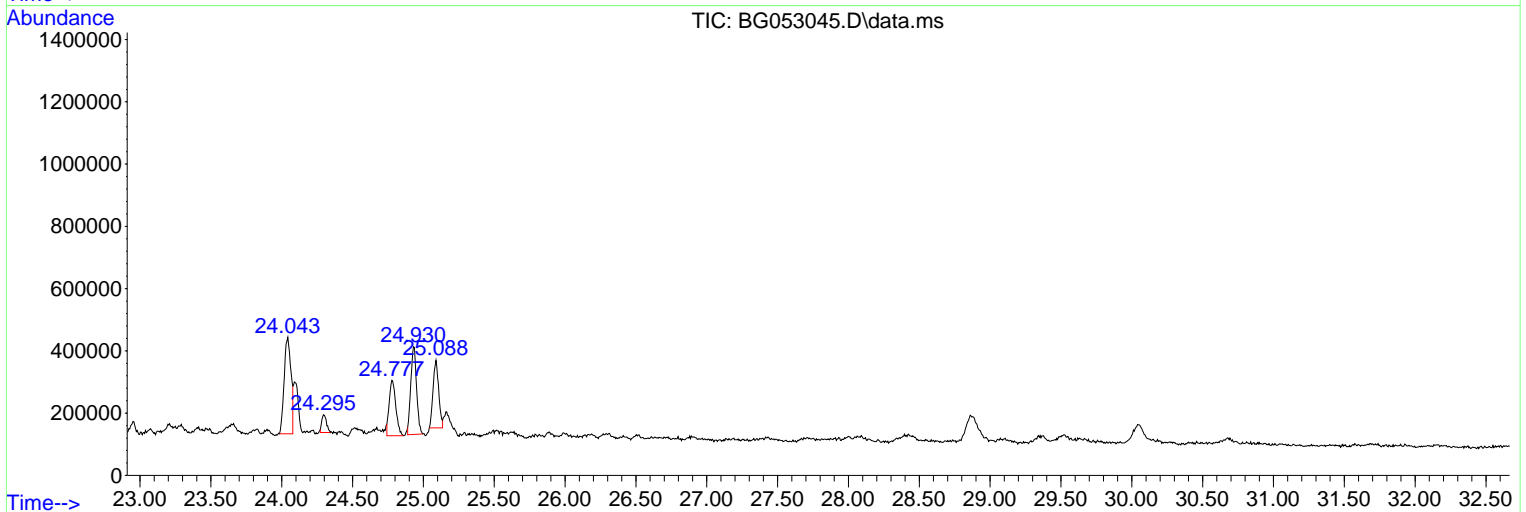
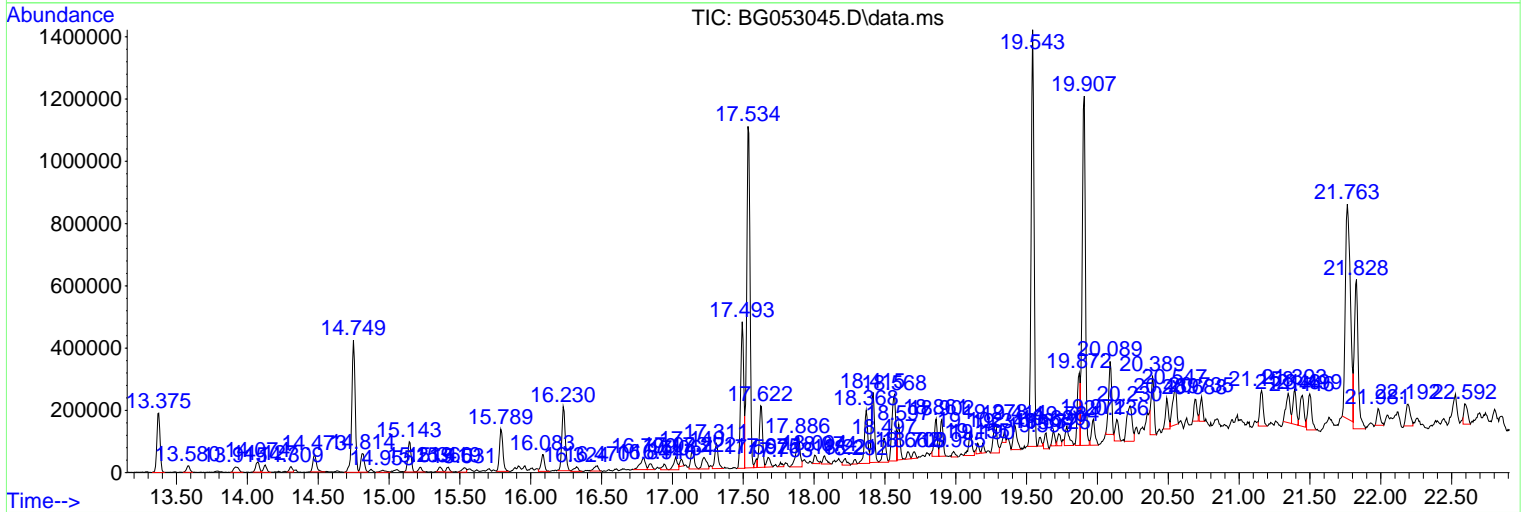
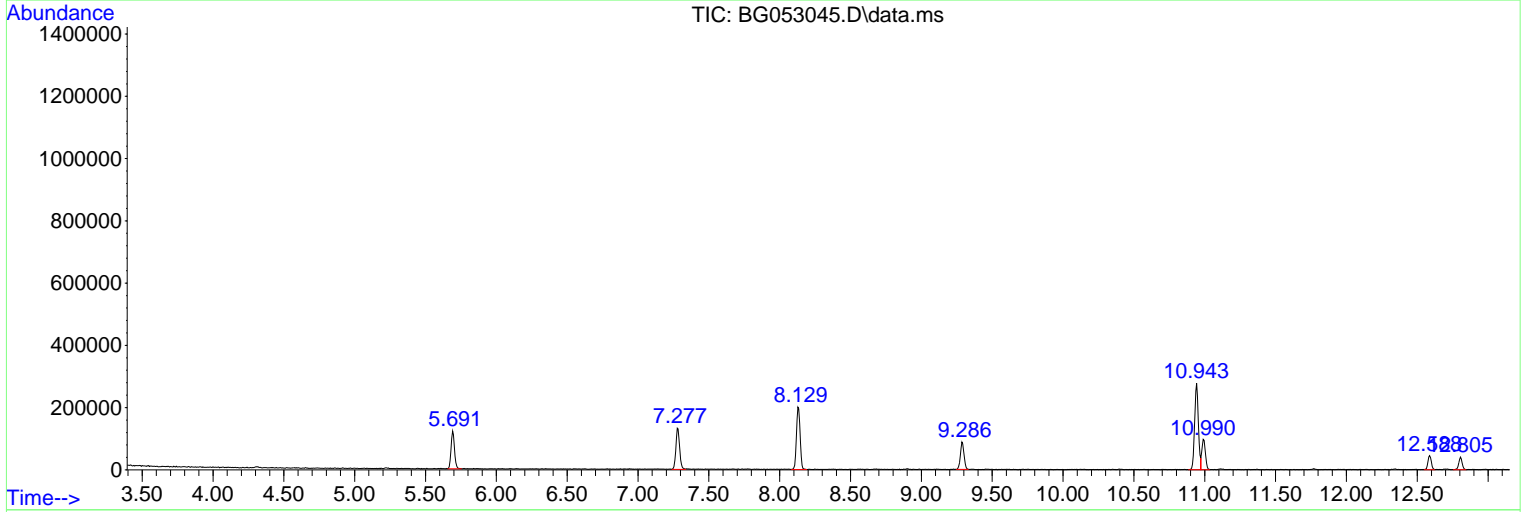
Sum of corrected areas: 23435799

Data Path : Z:\svoasrv\HPCHEM1\BNA\_G\Data\BG040522\  
 Data File : BG053045.D  
 Acq On : 5 Apr 2022 23:44  
 Operator : CG/JU  
 Sample : N2257-01 5X  
 Misc :  
 ALS Vial : 13 Sample Multiplier: 1

Instrument :  
 BNA\_G  
 ClientSampleId :  
 TP-1

Quant Method : Z:\svoasrv\HPCHEM1\BNA\_G\Methods\8270-BG031522.M  
 Quant Title : ASP BNA STANDARDS FOR 5 POINT CALIBRATION

TIC Library : C:\Database\NIST20.L  
 TIC Integration Parameters: LSCINT.P



Data Path : Z:\svoasrv\HPCHEM1\BNA\_G\Data\BG040522\  
 Data File : BG053045.D  
 Acq On : 5 Apr 2022 23:44  
 Operator : CG/JU  
 Sample : N2257-01 5X  
 Misc :  
 ALS Vial : 13 Sample Multiplier: 1

Instrument :  
 BNA\_G  
 ClientSampleId :  
 TP-1

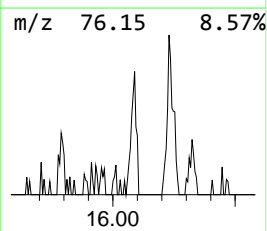
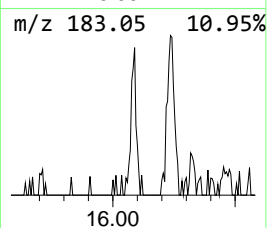
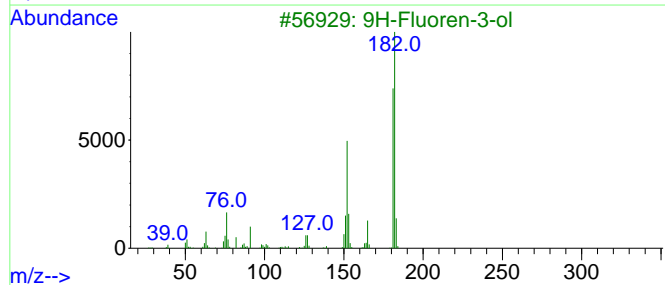
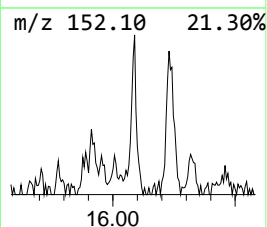
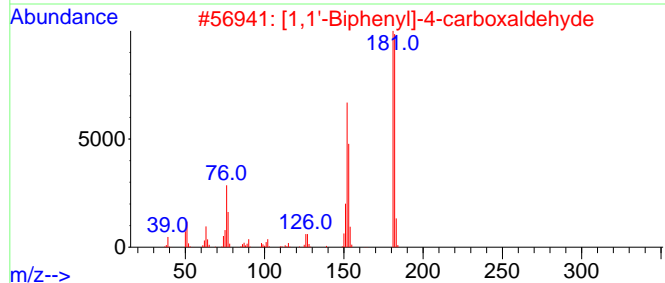
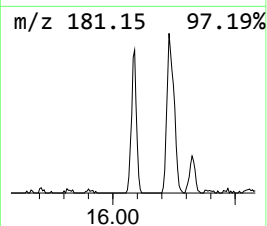
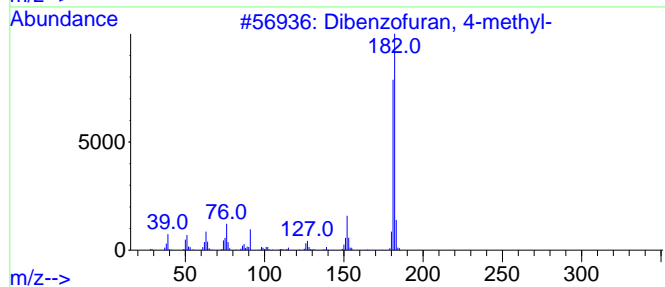
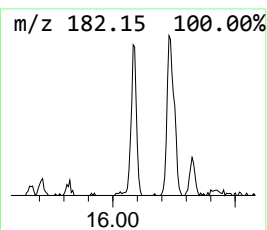
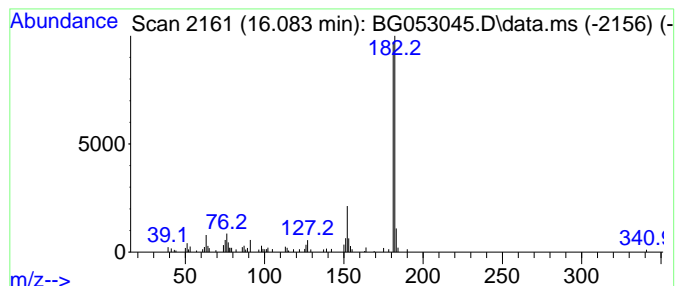
Quant Method : Z:\svoasrv\HPCHEM1\BNA\_G\Methods\8270-BG031522.M  
 Quant Title : ASP BNA STANDARDS FOR 5 POINT CALIBRATION

TIC Library : C:\Database\NIST20.L  
 TIC Integration Parameters: LSCINT.P

\*\*\*\*\*  
 Peak Number 1 Dibenzofuran, 4-methyl- Concentration Rank 19

R.T.	EstConc	Area	Relative to ISTD	R.T.
16.083	2.55 ng	88537	Acenaphthene-d10	14.749

Hit#	of	5	Tentative ID	MW	MolForm	CAS#	Qual
1			Dibenzofuran, 4-methyl-	182	C13H10O	007320-53-8	91
2			[1,1'-Biphenyl]-4-carboxaldehyde	182	C13H10O	003218-36-8	86
3			9H-Fluoren-3-ol	182	C13H10O	006344-67-8	78
4			9H-Fluoren-9-ol	182	C13H10O	001689-64-1	72
5			Pyrido[2,3-b]indole, 6-methyl-	182	C12H10N2	108349-67-3	72



Data Path : Z:\svoasrv\HPCHEM1\BNA\_G\Data\BG040522\  
 Data File : BG053045.D  
 Acq On : 5 Apr 2022 23:44  
 Operator : CG/JU  
 Sample : N2257-01 5X  
 Misc :  
 ALS Vial : 13 Sample Multiplier: 1

Instrument :  
 BNA\_G  
 ClientSampleId :  
 TP-1

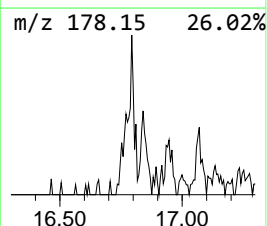
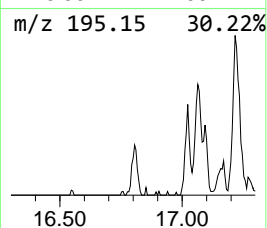
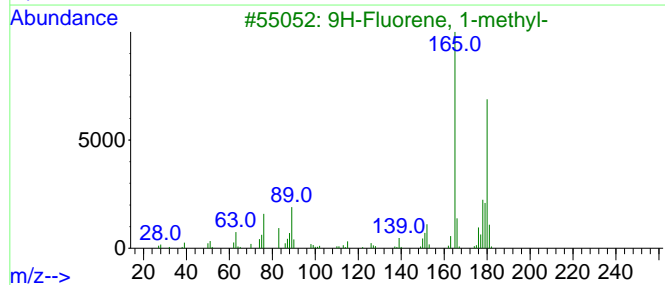
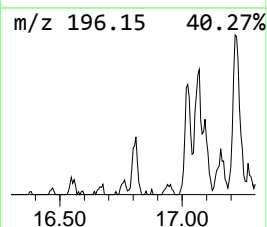
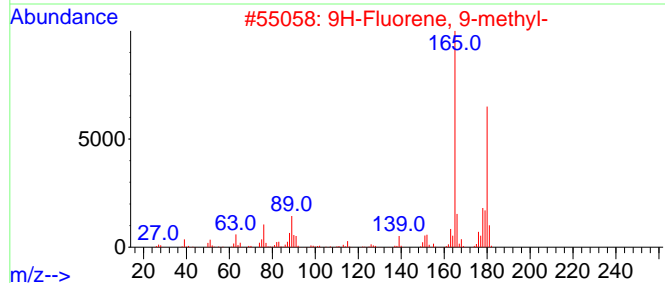
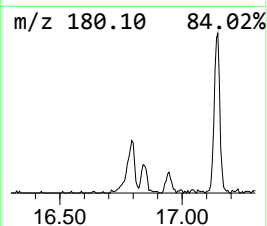
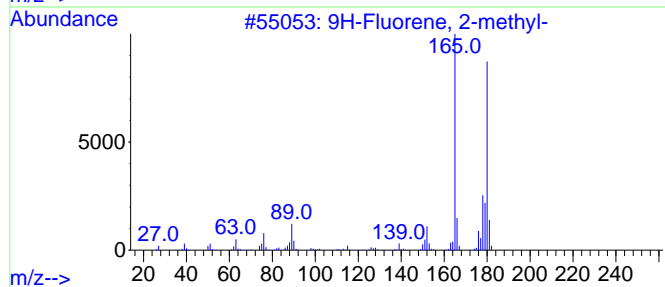
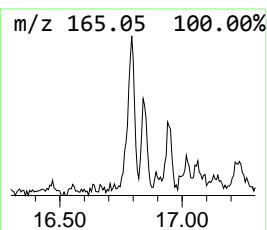
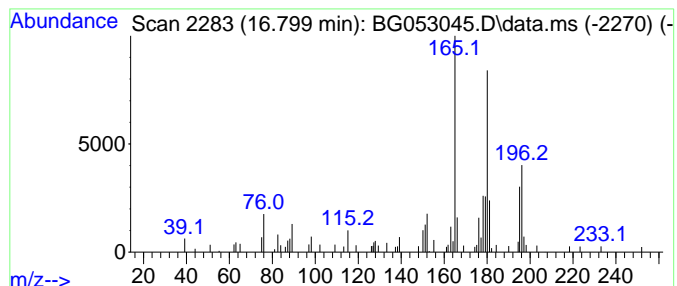
Quant Method : Z:\svoasrv\HPCHEM1\BNA\_G\Methods\8270-BG031522.M  
 Quant Title : ASP BNA STANDARDS FOR 5 POINT CALIBRATION

TIC Library : C:\Database\NIST20.L  
 TIC Integration Parameters: LSCINT.P

\*\*\*\*\*  
 Peak Number 2 9H-Fluorene, 2-methyl- Concentration Rank 18

R.T.	EstConc	Area	Relative to ISTD	R.T.
16.799	2.62 ng	95933	Phenanthrene-d10	17.493

Hit#	of 5	Tentative ID	MW	MolForm	CAS#	Qual
1		9H-Fluorene, 2-methyl-	180	C14H12	001430-97-3	64
2		9H-Fluorene, 9-methyl-	180	C14H12	002523-37-7	64
3		9H-Fluorene, 1-methyl-	180	C14H12	001730-37-6	64
4		9H-Fluorene, 4-methyl-	180	C14H12	001556-99-6	64
5		Borane, methyl-diphenyl-	180	C13H13B	059073-99-3	52



Data Path : Z:\svoasrv\HPCHEM1\BNA\_G\Data\BG040522\  
 Data File : BG053045.D  
 Acq On : 5 Apr 2022 23:44  
 Operator : CG/JU  
 Sample : N2257-01 5X  
 Misc :  
 ALS Vial : 13 Sample Multiplier: 1

Instrument :  
 BNA\_G  
 ClientSampleId :  
 TP-1

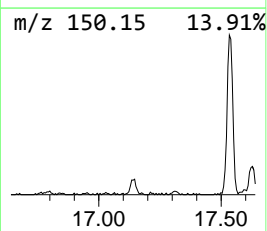
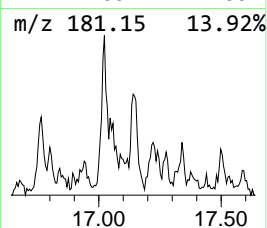
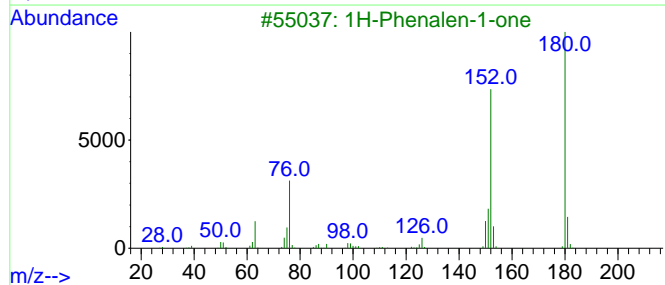
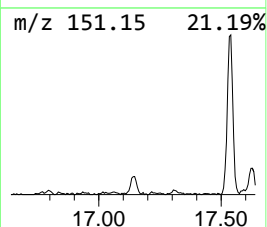
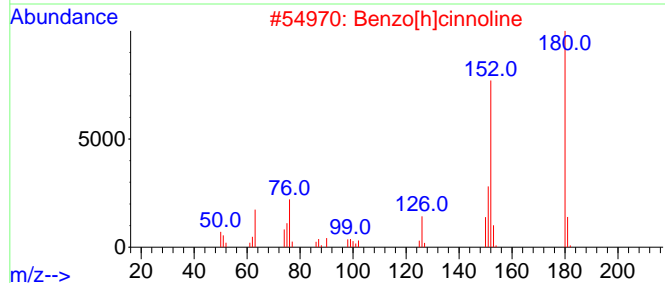
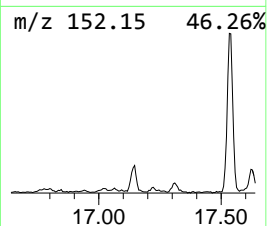
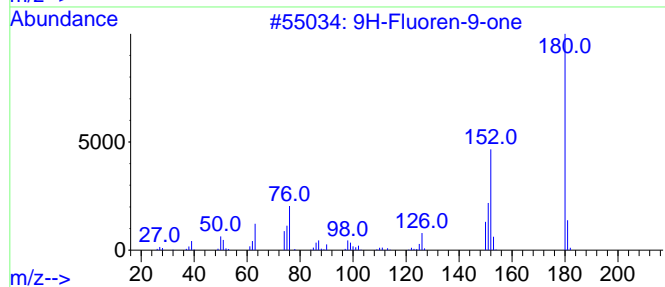
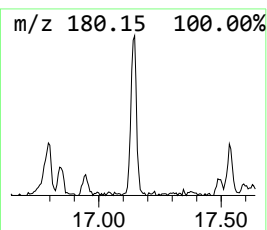
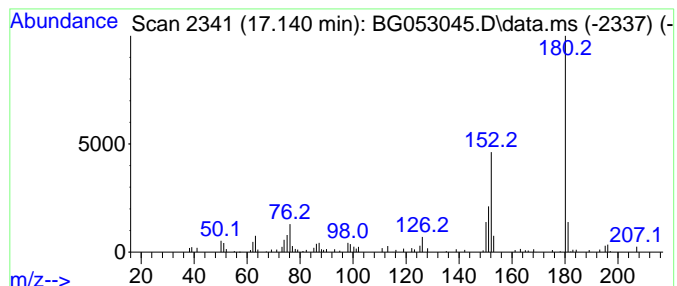
Quant Method : Z:\svoasrv\HPCHEM1\BNA\_G\Methods\8270-BG031522.M  
 Quant Title : ASP BNA STANDARDS FOR 5 POINT CALIBRATION

TIC Library : C:\Database\NIST20.L  
 TIC Integration Parameters: LSCINT.P

\*\*\*\*\*  
 Peak Number 3 9H-Fluoren-9-one Concentration Rank 16

R.T.	EstConc	Area	Relative to ISTD	R.T.
17.140	2.87 ng	104977	Phenanthrene-d10	17.493

Hit#	of	5	Tentative ID	MW	MolForm	CAS#	Qual
1			9H-Fluoren-9-one	180	C13H8O	000486-25-9	94
2			Benzo[h]cinnoline	180	C12H8N2	000230-31-9	91
3			1H-Phenalen-1-one	180	C13H8O	000548-39-0	78
4			1,3-Benzenedicarboxaldehyde, 2,4...	180	C9H8O4	010209-57-1	53
5			2,3-Diazaphenanthrene	180	C12H8N2	000229-72-1	50



Data Path : Z:\svoasrv\HPCHEM1\BNA\_G\Data\BG040522\  
 Data File : BG053045.D  
 Acq On : 5 Apr 2022 23:44  
 Operator : CG/JU  
 Sample : N2257-01 5X  
 Misc :  
 ALS Vial : 13 Sample Multiplier: 1

Instrument :  
 BNA\_G  
 ClientSampleId :  
 TP-1

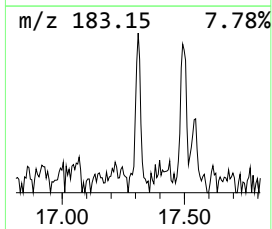
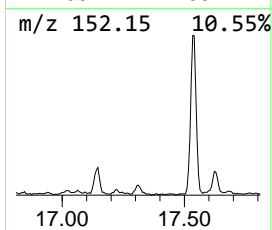
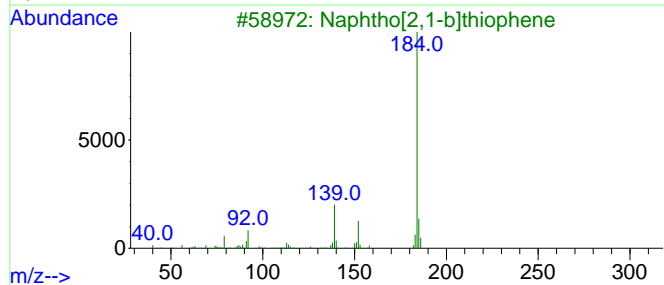
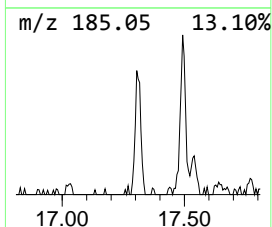
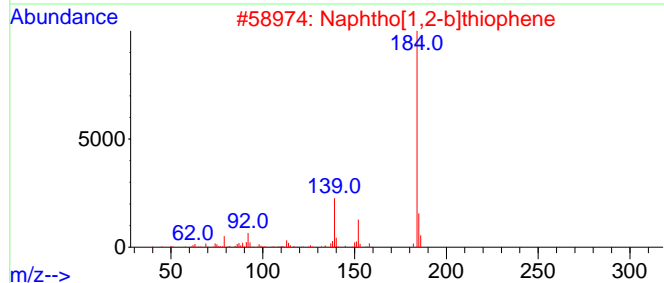
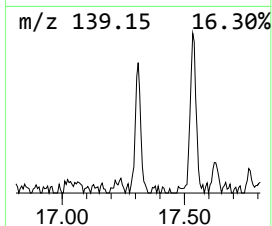
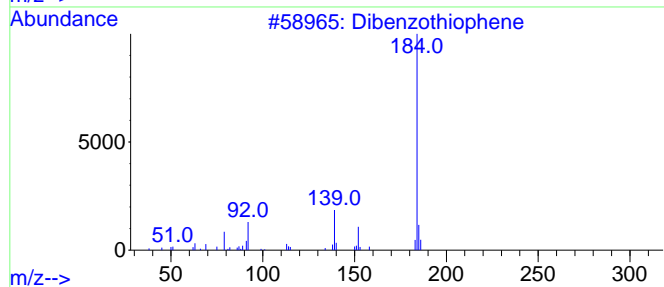
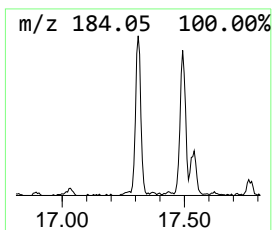
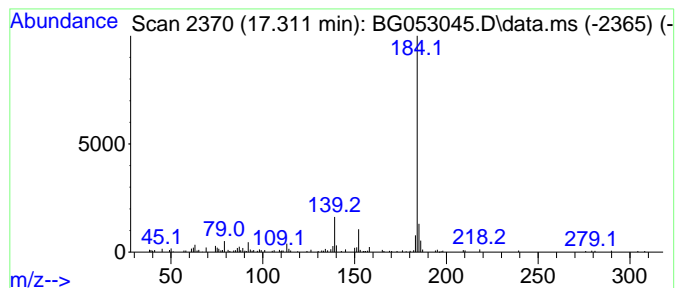
Quant Method : Z:\svoasrv\HPCHEM1\BNA\_G\Methods\8270-BG031522.M  
 Quant Title : ASP BNA STANDARDS FOR 5 POINT CALIBRATION

TIC Library : C:\Database\NIST20.L  
 TIC Integration Parameters: LSCINT.P

\*\*\*\*\*  
 Peak Number 4 Dibenzothiophene Concentration Rank 12

R.T.	EstConc	Area	Relative to ISTD	R.T.
17.311	3.64 ng	133230	Phenanthrene-d10	17.493

Hit#	of	5	Tentative ID	MW	MolForm	CAS#	Qual
1			Dibenzothiophene	184	C12H8S	000132-65-0	95
2			Naphtho[1,2-b]thiophene	184	C12H8S	000234-41-3	94
3			Naphtho[2,1-b]thiophene	184	C12H8S	000233-02-3	94
4			Naphtho[2,3-b]thiophene	184	C12H8S	000268-77-9	93
5			Azuleno(2,1-b)thiophene	184	C12H8S	000248-13-5	91





Data Path : Z:\svoasrv\HPCHEM1\BNA\_G\Data\BG040522\  
 Data File : BG053045.D  
 Acq On : 5 Apr 2022 23:44  
 Operator : CG/JU  
 Sample : N2257-01 5X  
 Misc :  
 ALS Vial : 13 Sample Multiplier: 1

Instrument :  
 BNA\_G  
 ClientSampleId :  
 TP-1

Quant Method : Z:\svoasrv\HPCHEM1\BNA\_G\Methods\8270-BG031522.M  
 Quant Title : ASP BNA STANDARDS FOR 5 POINT CALIBRATION

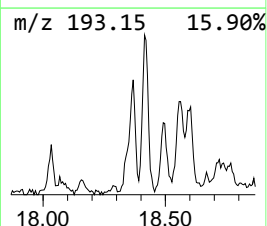
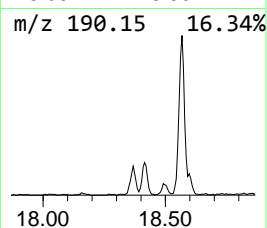
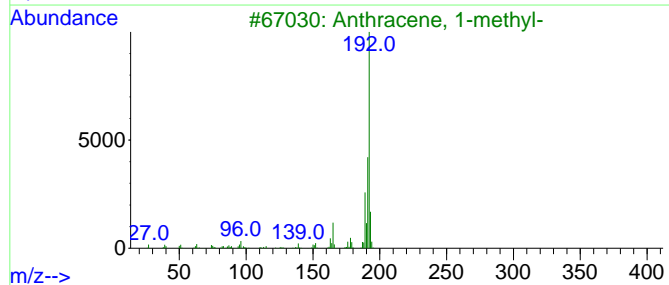
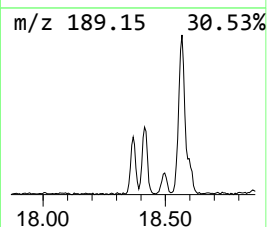
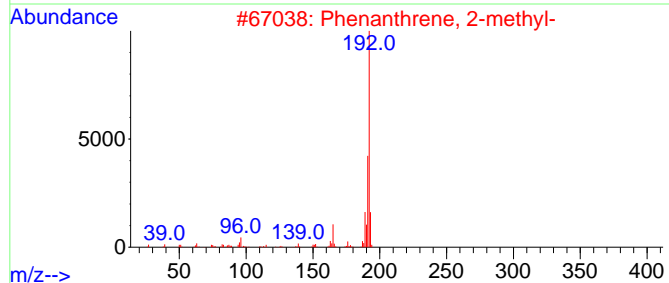
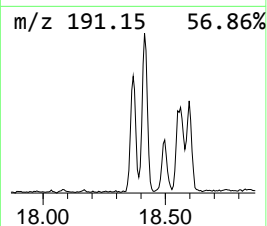
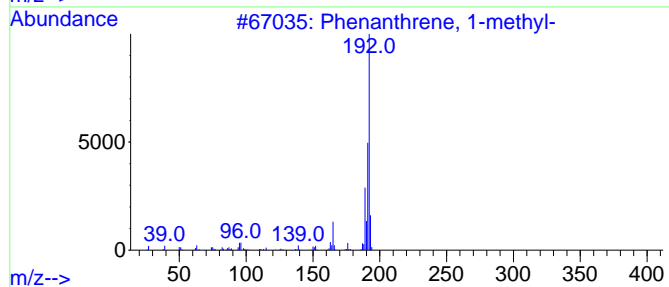
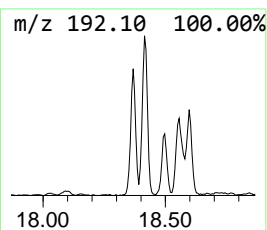
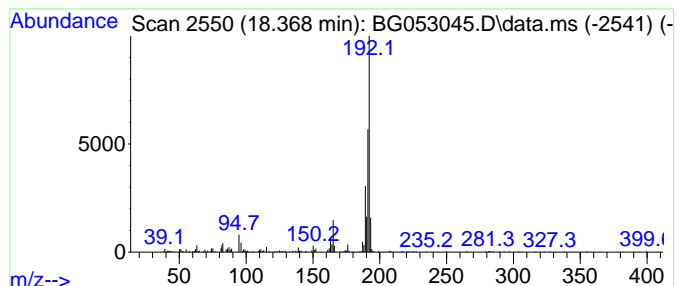
TIC Library : C:\Database\NIST20.L  
 TIC Integration Parameters: LSCINT.P

\*\*\*\*\*  
 Peak Number 5 Phenanthrene, 1-methyl- Concentration Rank 4

R.T.	EstConc	Area	Relative to ISTD	R.T.
18.368	7.81 ng	286294	Phenanthrene-d10	17.493

Hit#	of	5	Tentative ID	MW	MolForm	CAS#	Qual
1			Phenanthrene, 1-methyl-	192	C15H12	000832-69-9	96
2			Phenanthrene, 2-methyl-	192	C15H12	002531-84-2	96
3			Anthracene, 1-methyl-	192	C15H12	000610-48-0	94
4			Anthracene, 2-methyl-	192	C15H12	000613-12-7	94
5			1H-Indene, 1-phenyl-	192	C15H12	001961-96-2	93



Data Path : Z:\svoasrv\HPCHEM1\BNA\_G\Data\BG040522\  
 Data File : BG053045.D  
 Acq On : 5 Apr 2022 23:44  
 Operator : CG/JU  
 Sample : N2257-01 5X  
 Misc :  
 ALS Vial : 13 Sample Multiplier: 1

Instrument :  
 BNA\_G  
 ClientSampleId :  
 TP-1

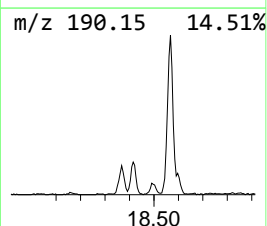
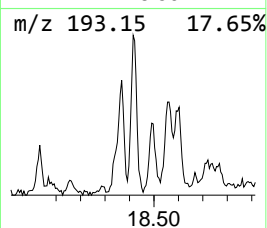
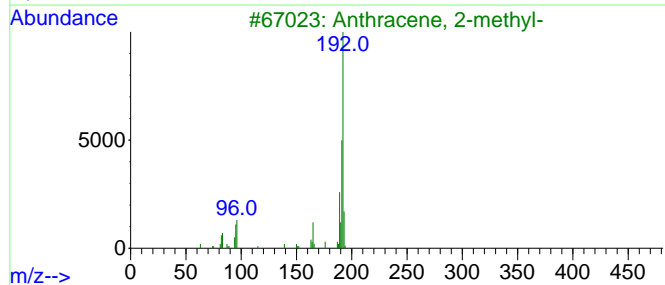
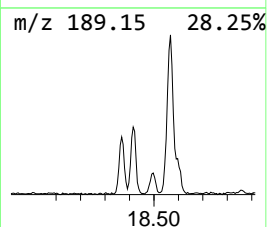
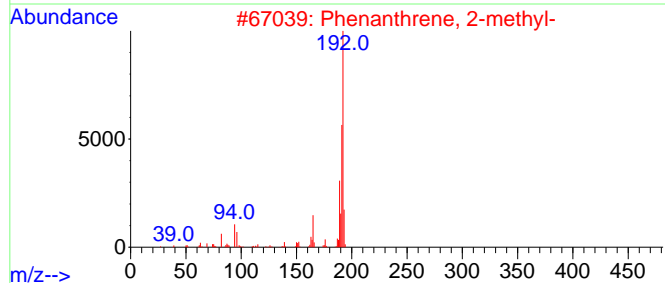
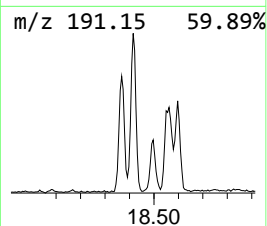
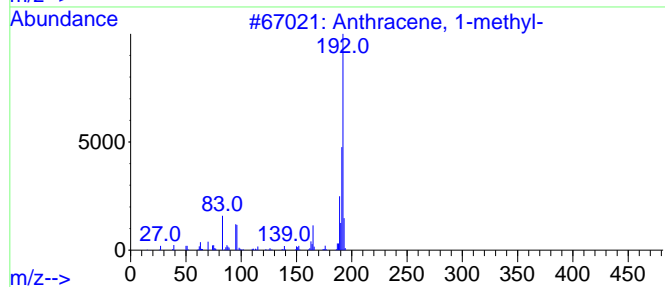
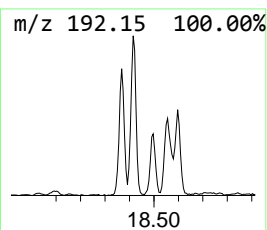
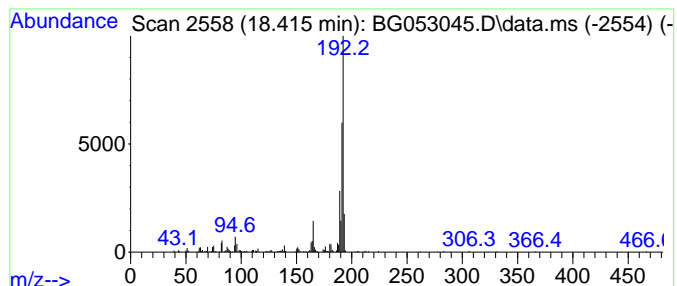
Quant Method : Z:\svoasrv\HPCHEM1\BNA\_G\Methods\8270-BG031522.M  
 Quant Title : ASP BNA STANDARDS FOR 5 POINT CALIBRATION

TIC Library : C:\Database\NIST20.L  
 TIC Integration Parameters: LSCINT.P

\*\*\*\*\*  
 Peak Number 6 Anthracene, 1-methyl- Concentration Rank 3

R.T.	EstConc	Area	Relative to ISTD	R.T.
18.415	9.20 ng	337226	Phenanthrene-d10	17.493

Hit#	of 5	Tentative ID	MW	MolForm	CAS#	Qual
1		Anthracene, 1-methyl-	192	C15H12	000610-48-0	94
2		Phenanthrene, 2-methyl-	192	C15H12	002531-84-2	91
3		Anthracene, 2-methyl-	192	C15H12	000613-12-7	91
4		Phenanthrene, 1-methyl-	192	C15H12	000832-69-9	90
5		Anthracene, 9-methyl-	192	C15H12	000779-02-2	87



Data Path : Z:\svoasrv\HPCHEM1\BNA\_G\Data\BG040522\  
 Data File : BG053045.D  
 Acq On : 5 Apr 2022 23:44  
 Operator : CG/JU  
 Sample : N2257-01 5X  
 Misc :  
 ALS Vial : 13 Sample Multiplier: 1

Instrument :  
 BNA\_G  
 ClientSampleId :  
 TP-1

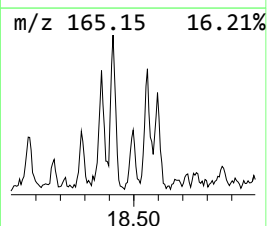
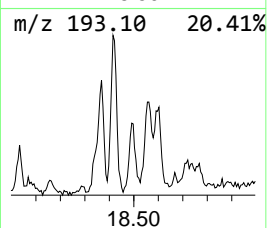
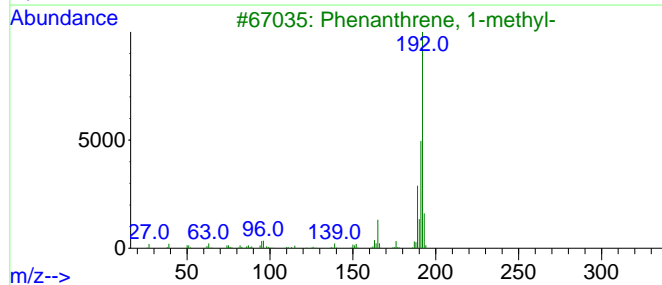
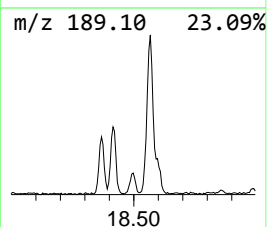
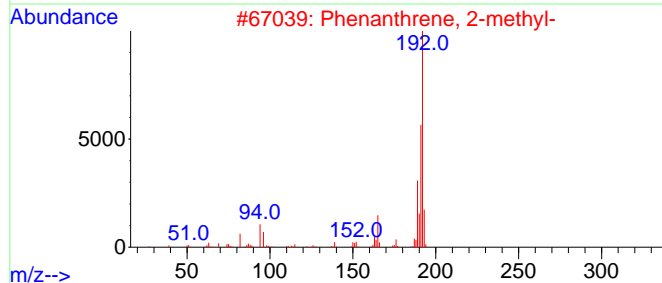
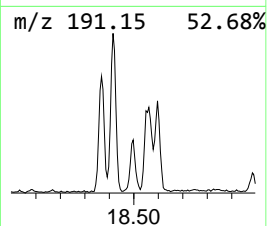
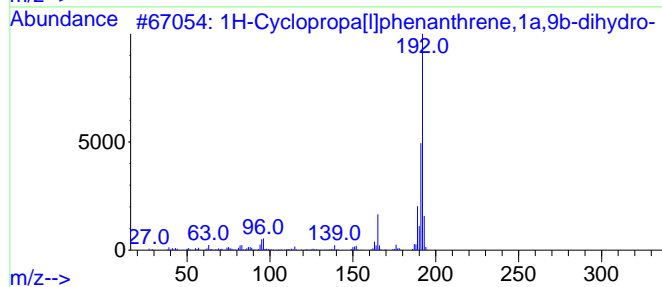
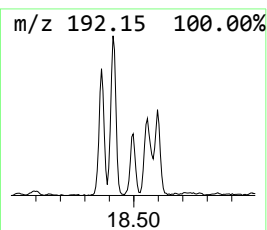
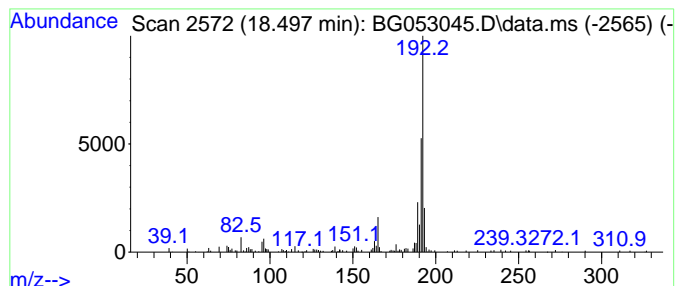
Quant Method : Z:\svoasrv\HPCHEM1\BNA\_G\Methods\8270-BG031522.M  
 Quant Title : ASP BNA STANDARDS FOR 5 POINT CALIBRATION

TIC Library : C:\Database\NIST20.L  
 TIC Integration Parameters: LSCINT.P

\*\*\*\*\*  
 Peak Number 7 1H-Cyclopropa[1]phenanthren... Concentration Rank 13

R.T.	EstConc	Area	Relative to ISTD	R.T.
18.497	3.52 ng	128999	Phenanthrene-d10	17.493

Hit#	of 5	Tentative ID	MW	MolForm	CAS#	Qual
1		1H-Cyclopropa[1]phenanthrene,1a,...	192	C15H12	000949-41-7	98
2		Phenanthrene, 2-methyl-	192	C15H12	002531-84-2	97
3		Phenanthrene, 1-methyl-	192	C15H12	000832-69-9	96
4		1H-Indene, 2-phenyl-	192	C15H12	004505-48-0	94
5		Anthracene, 2-methyl-	192	C15H12	000613-12-7	94



Data Path : Z:\svoasrv\HPCHEM1\BNA\_G\Data\BG040522\  
 Data File : BG053045.D  
 Acq On : 5 Apr 2022 23:44  
 Operator : CG/JU  
 Sample : N2257-01 5X  
 Misc :  
 ALS Vial : 13 Sample Multiplier: 1

Instrument :  
 BNA\_G  
 ClientSampleId :  
 TP-1

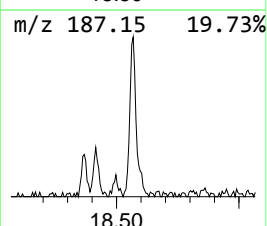
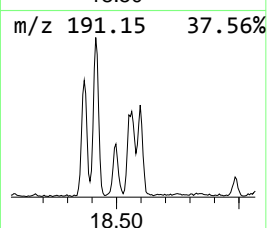
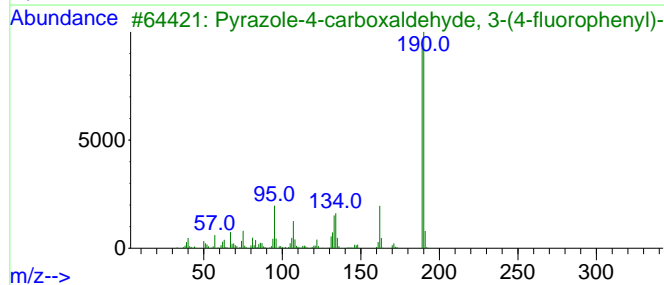
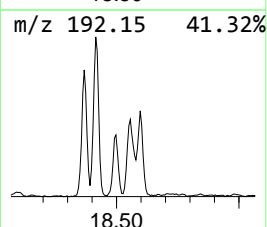
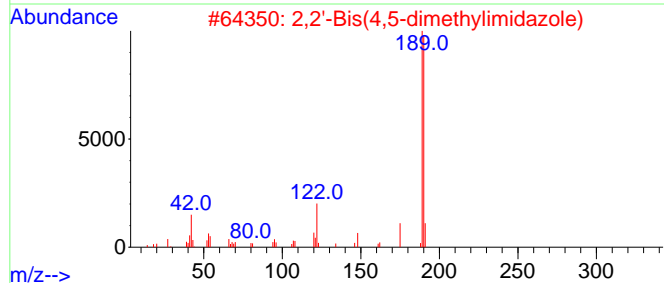
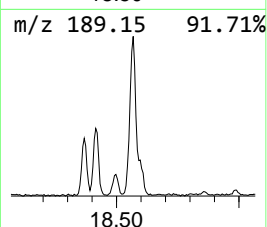
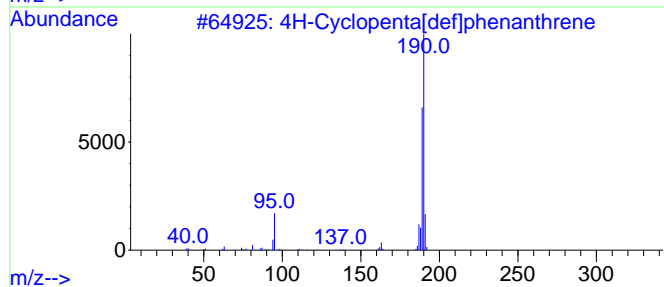
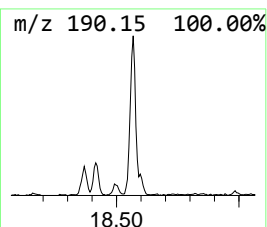
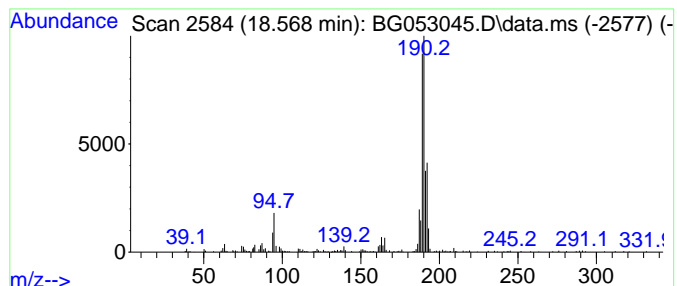
Quant Method : Z:\svoasrv\HPCHEM1\BNA\_G\Methods\8270-BG031522.M  
 Quant Title : ASP BNA STANDARDS FOR 5 POINT CALIBRATION

TIC Library : C:\Database\NIST20.L  
 TIC Integration Parameters: LSCINT.P

\*\*\*\*\*  
 Peak Number 8 4H-Cyclopenta[def]phenanthrene Concentration Rank 2

R.T.	EstConc	Area	Relative to ISTD	R.T.
18.568	11.46 ng	420061	Phenanthrene-d10	17.493

Hit#	of	5	Tentative ID	MW	MolForm	CAS#	Qual
1			4H-Cyclopenta[def]phenanthrene	190	C15H10	000203-64-5	74
2			2,2'-Bis(4,5-dimethylimidazole)	190	C10H14N4	069286-06-2	49
3			Pyrazole-4-carboxaldehyde, 3-(4-...	190	C10H7FN2O	306936-57-2	47
4			Methyl 2-chloro-5-nitrothiophene...	221	C6H4ClNO4S	1000436-96-2	17
5			Pyrimidine, 6-oxo-4-(3-fluorophe...	190	C10H7FN2O	085979-55-1	17



Data Path : Z:\svoasrv\HPCHEM1\BNA\_G\Data\BG040522\  
 Data File : BG053045.D  
 Acq On : 5 Apr 2022 23:44  
 Operator : CG/JU  
 Sample : N2257-01 5X  
 Misc :  
 ALS Vial : 13 Sample Multiplier: 1

Instrument :  
 BNA\_G  
 ClientSampleId :  
 TP-1

Quant Method : Z:\svoasrv\HPCHEM1\BNA\_G\Methods\8270-BG031522.M  
 Quant Title : ASP BNA STANDARDS FOR 5 POINT CALIBRATION

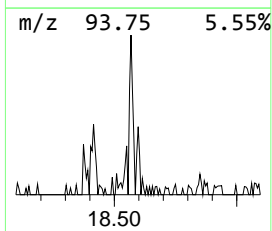
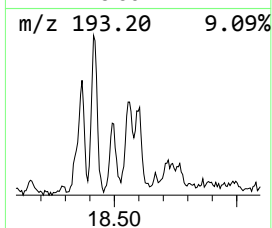
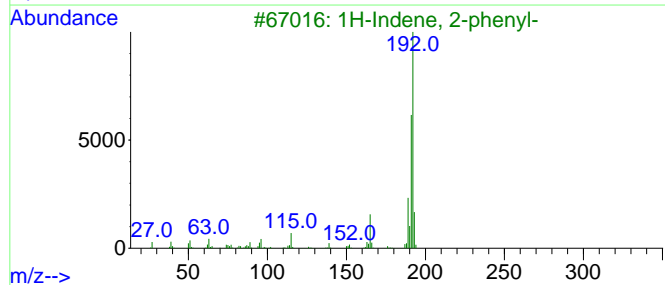
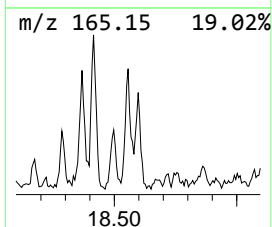
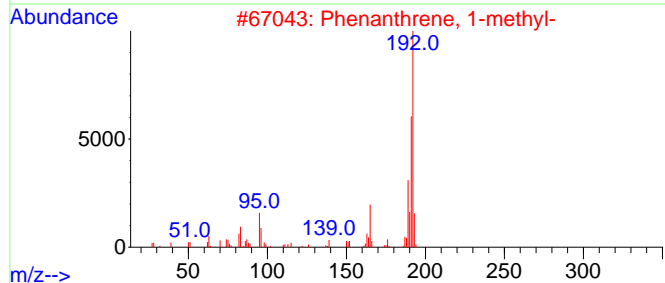
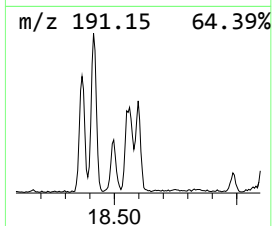
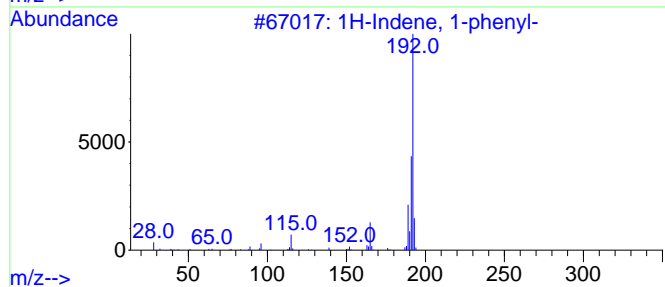
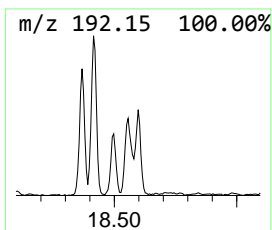
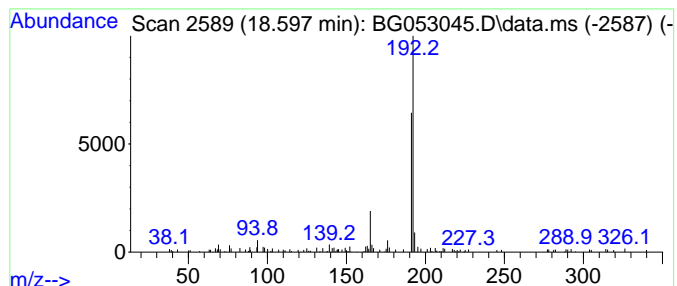
TIC Library : C:\Database\NIST20.L  
 TIC Integration Parameters: LSCINT.P

\*\*\*\*\*  
 Peak Number 9 1H-Indene, 1-phenyl- Concentration Rank 10

R.T.	EstConc	Area	Relative to ISTD	R.T.
18.597	3.74 ng	137211	Phenanthrene-d10	17.493

Hit#	of 5	Tentative ID	MW	MolForm	CAS#	Qual
1		1H-Indene, 1-phenyl-	192	C15H12	001961-96-2	72
2		Phenanthrene, 1-methyl-	192	C15H12	000832-69-9	72
3		1H-Indene, 2-phenyl-	192	C15H12	004505-48-0	72
4		Phenanthrene, 3-methyl-	192	C15H12	000832-71-3	64
5		Phenanthrene, 9-methyl-	192	C15H12	000883-20-5	64



Data Path : Z:\svoasrv\HPCHEM1\BNA\_G\Data\BG040522\  
 Data File : BG053045.D  
 Acq On : 5 Apr 2022 23:44  
 Operator : CG/JU  
 Sample : N2257-01 5X  
 Misc :  
 ALS Vial : 13 Sample Multiplier: 1

Instrument :  
 BNA\_G  
 ClientSampleId :  
 TP-1

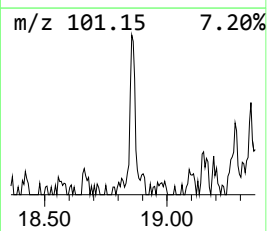
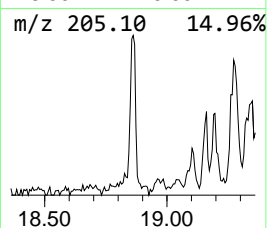
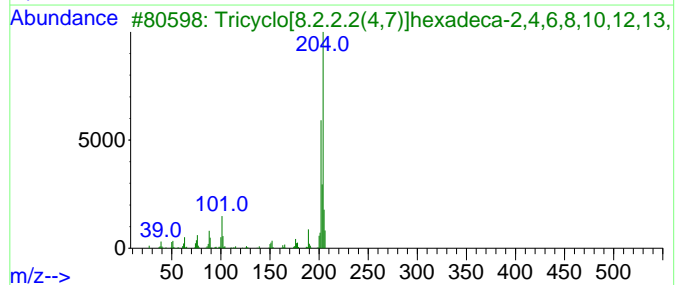
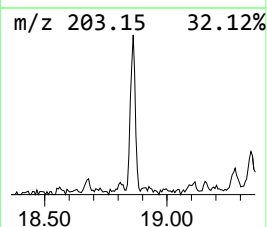
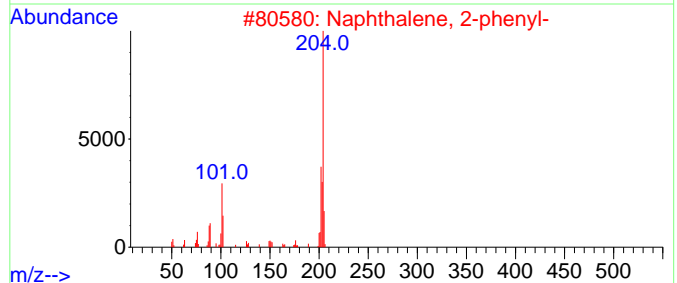
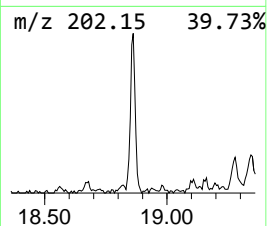
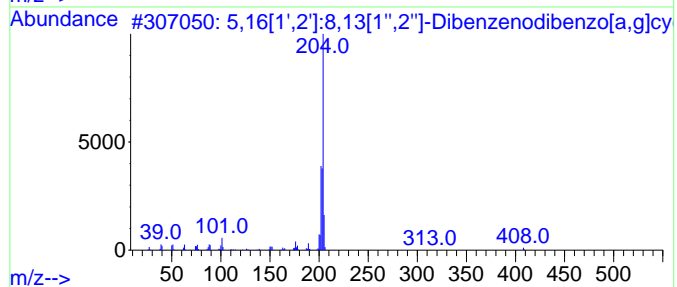
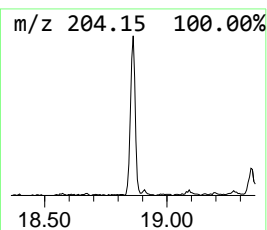
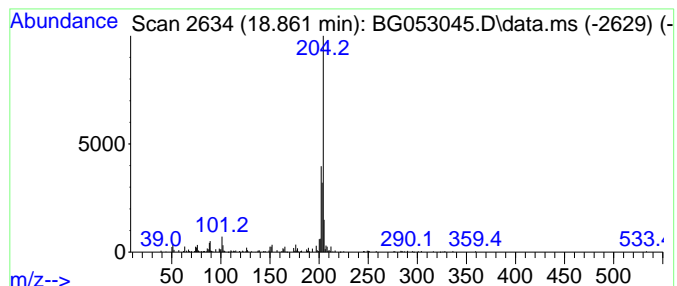
Quant Method : Z:\svoasrv\HPCHEM1\BNA\_G\Methods\8270-BG031522.M  
 Quant Title : ASP BNA STANDARDS FOR 5 POINT CALIBRATION

TIC Library : C:\Database\NIST20.L  
 TIC Integration Parameters: LSCINT.P

\*\*\*\*\*  
 Peak Number 10 5,16[1',2']:8,13[1'',2'']-D... Concentration Rank 6

R.T.	EstConc	Area	Relative to ISTD	R.T.
18.861	4.91 ng	179912	Phenanthrene-d10	17.493

Hit#	of 5	Tentative ID	MW	MolForm	CAS#	Qual
1		5,16[1',2']:8,13[1'',2'']-Dibenz...	408	C32H24	005672-97-9	90
2		Naphthalene, 2-phenyl-	204	C16H12	000612-94-2	70
3		Tricyclo[8.2.2.2(4,7)]hexadeca-2...	204	C16H12	006572-60-7	62
4		9,10-di(Chloromethyl)anthracene	274	C16H12Cl2	010387-13-0	53
5		Naphthalene, 1-phenyl-	204	C16H12	000605-02-7	49



Data Path : Z:\svoasrv\HPCHEM1\BNA\_G\Data\BG040522\  
 Data File : BG053045.D  
 Acq On : 5 Apr 2022 23:44  
 Operator : CG/JU  
 Sample : N2257-01 5X  
 Misc :  
 ALS Vial : 13 Sample Multiplier: 1

Instrument :  
 BNA\_G  
 ClientSampleId :  
 TP-1

Quant Method : Z:\svoasrv\HPCHEM1\BNA\_G\Methods\8270-BG031522.M  
 Quant Title : ASP BNA STANDARDS FOR 5 POINT CALIBRATION

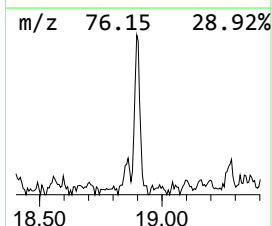
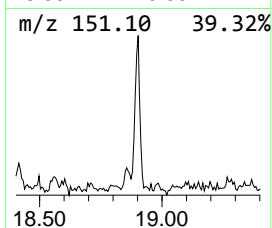
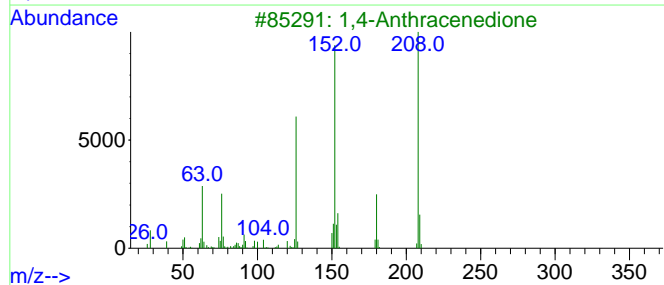
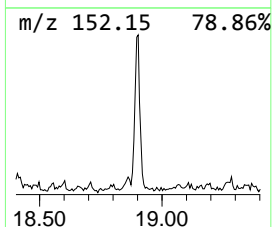
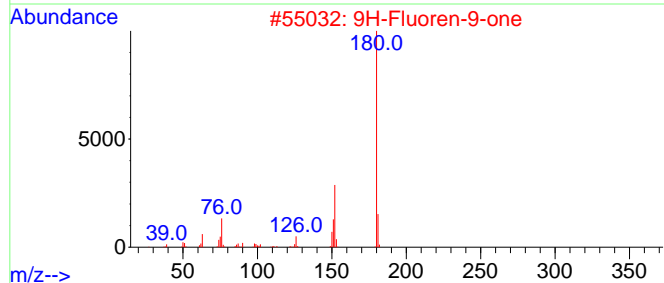
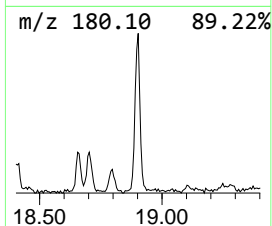
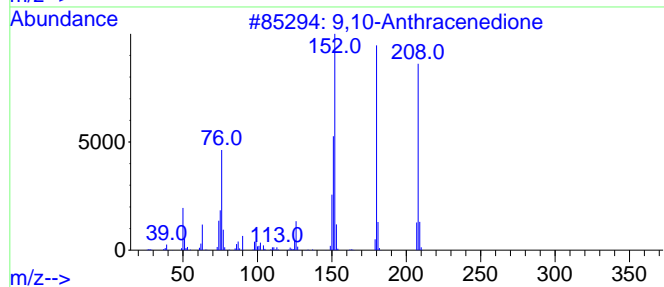
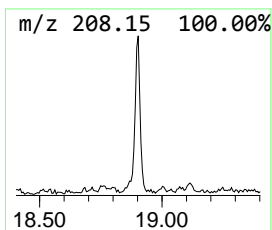
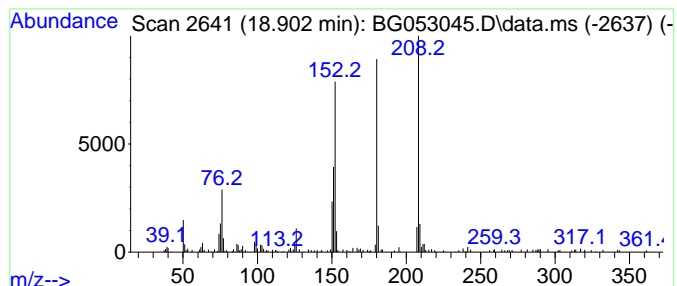
TIC Library : C:\Database\NIST20.L  
 TIC Integration Parameters: LSCINT.P

\*\*\*\*\*  
 Peak Number 11 9,10-Anthracenedione Concentration Rank 7

R.T.	EstConc	Area	Relative to ISTD	R.T.
18.903	4.50 ng	164863	Phenanthrene-d10	17.493

Hit#	of 5	Tentative ID	MW	MolForm	CAS#	Qual
1		9,10-Anthracenedione	208	C14H8O2	000084-65-1	97
2		9H-Fluoren-9-one	180	C13H8O	000486-25-9	70
3		1,4-Anthracenedione	208	C14H8O2	000635-12-1	64
4		Benzo[c]cinoline	180	C12H8N2	000230-17-1	64
5		1H-Phenalen-1-one	180	C13H8O	000548-39-0	60



Data Path : Z:\svoasrv\HPCHEM1\BNA\_G\Data\BG040522\  
 Data File : BG053045.D  
 Acq On : 5 Apr 2022 23:44  
 Operator : CG/JU  
 Sample : N2257-01 5X  
 Misc :  
 ALS Vial : 13 Sample Multiplier: 1

Instrument :  
 BNA\_G  
 ClientSampleId :  
 TP-1

Quant Method : Z:\svoasrv\HPCHEM1\BNA\_G\Methods\8270-BG031522.M  
 Quant Title : ASP BNA STANDARDS FOR 5 POINT CALIBRATION

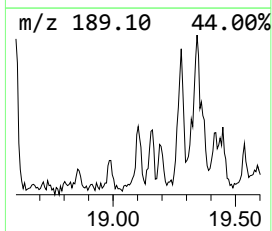
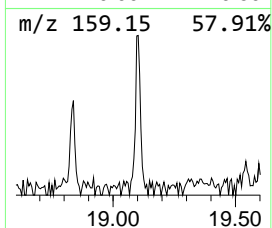
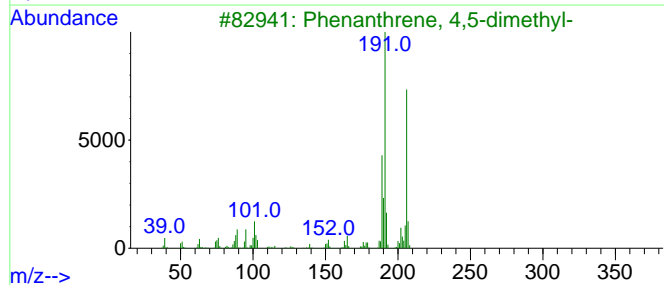
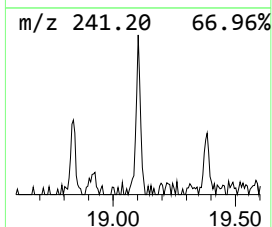
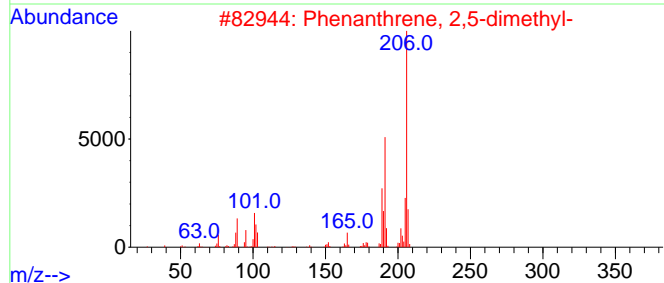
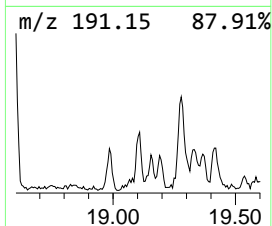
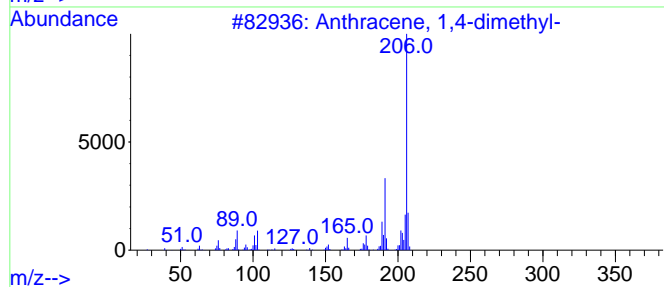
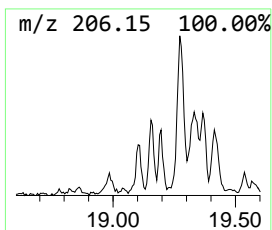
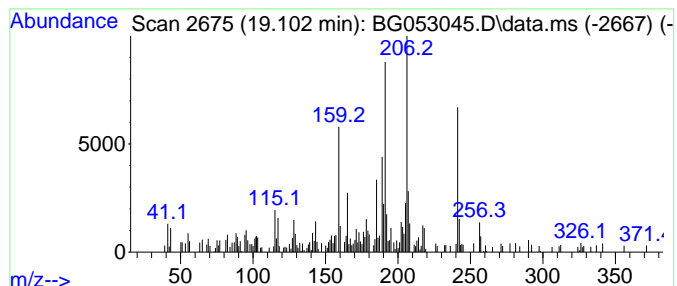
TIC Library : C:\Database\NIST20.L  
 TIC Integration Parameters: LSCINT.P

\*\*\*\*\*  
 Peak Number 12 Anthracene, 1,4-dimethyl- Concentration Rank 11

R.T.	EstConc	Area	Relative to ISTD	R.T.
19.102	3.67 ng	134295	Phenanthrene-d10	17.493

Hit#	of	5	Tentative ID	MW	MolForm	CAS#	Qual
1			Anthracene, 1,4-dimethyl-	206	C16H14	000781-92-0	86
2			Phenanthrene, 2,5-dimethyl-	206	C16H14	003674-66-6	70
3			Phenanthrene, 4,5-dimethyl-	206	C16H14	003674-69-9	70
4			Phenanthrene, 2,3-dimethyl-	206	C16H14	003674-65-5	70
5			1-Methyl-3-phenyl-1H-indene	206	C16H14	022360-62-9	60





Data Path : Z:\svoasrv\HPCHEM1\BNA\_G\Data\BG040522\  
 Data File : BG053045.D  
 Acq On : 5 Apr 2022 23:44  
 Operator : CG/JU  
 Sample : N2257-01 5X  
 Misc :  
 ALS Vial : 13 Sample Multiplier: 1

Instrument :  
 BNA\_G  
 ClientSampleId :  
 TP-1

Quant Method : Z:\svoasrv\HPCHEM1\BNA\_G\Methods\8270-BG031522.M  
 Quant Title : ASP BNA STANDARDS FOR 5 POINT CALIBRATION

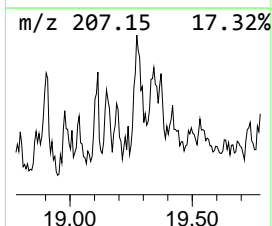
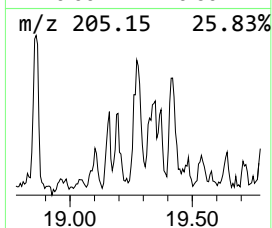
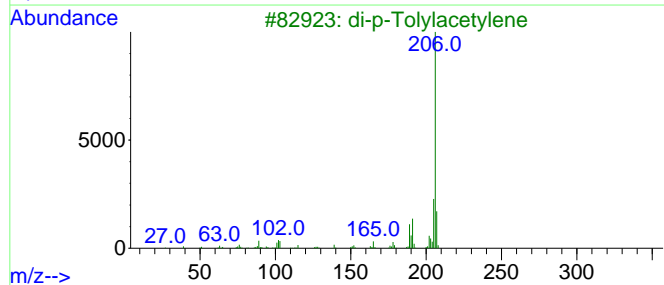
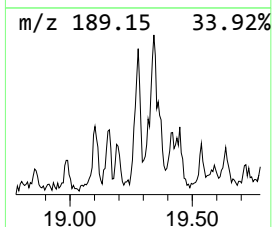
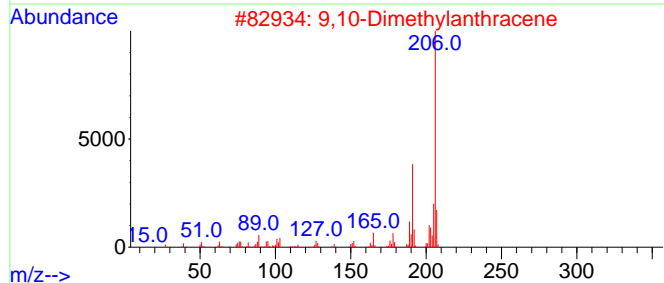
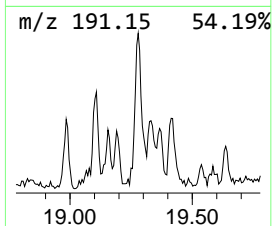
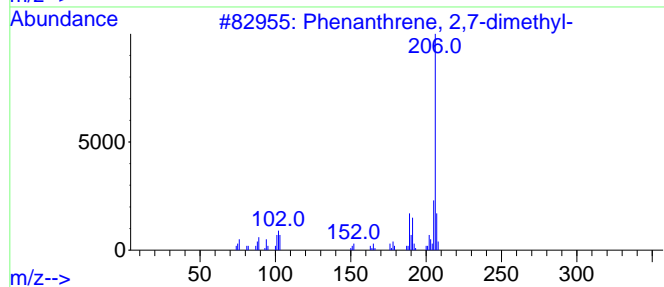
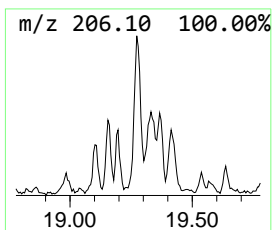
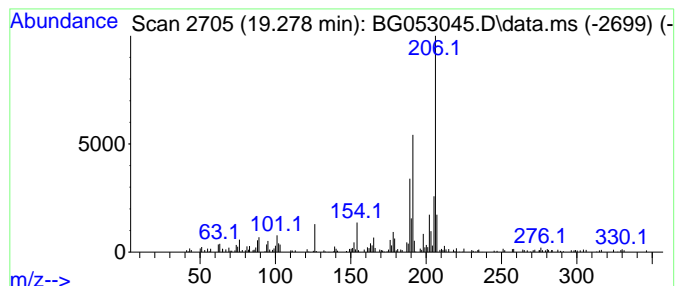
TIC Library : C:\Database\NIST20.L  
 TIC Integration Parameters: LSCINT.P

\*\*\*\*\*  
 Peak Number 13 Phenanthrene, 2,7-dimethyl- Concentration Rank 5

R.T.	EstConc	Area	Relative to ISTD	R.T.
19.278	4.96 ng	181893	Phenanthrene-d10	17.493

Hit# of 5	Tentative ID	MW	MolForm	CAS#	Qual
1	Phenanthrene, 2,7-dimethyl-	206	C16H14	001576-69-8	90
2	9,10-Dimethylanthracene	206	C16H14	000781-43-1	90
3	di-p-Tolylacetylene	206	C16H14	002789-88-0	87
4	Phenanthrene, 3,6-dimethyl-	206	C16H14	001576-67-6	87
5	Phenanthrene, 2,3-dimethyl-	206	C16H14	003674-65-5	83



Data Path : Z:\svoasrv\HPCHEM1\BNA\_G\Data\BG040522\  
 Data File : BG053045.D  
 Acq On : 5 Apr 2022 23:44  
 Operator : CG/JU  
 Sample : N2257-01 5X  
 Misc :  
 ALS Vial : 13 Sample Multiplier: 1

Instrument :  
 BNA\_G  
 ClientSampleId :  
 TP-1

Quant Method : Z:\svoasrv\HPCHEM1\BNA\_G\Methods\8270-BG031522.M  
 Quant Title : ASP BNA STANDARDS FOR 5 POINT CALIBRATION

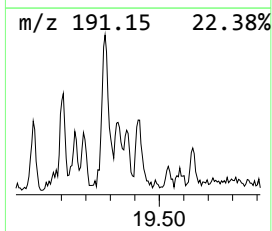
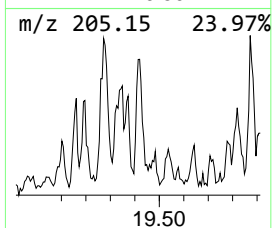
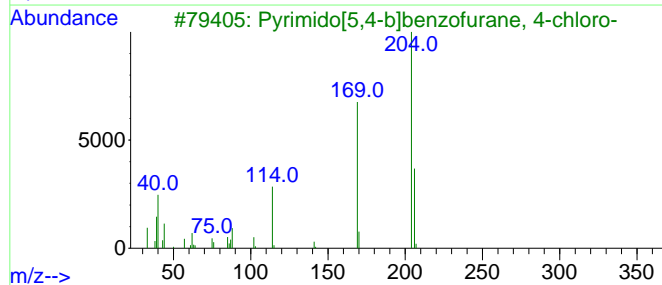
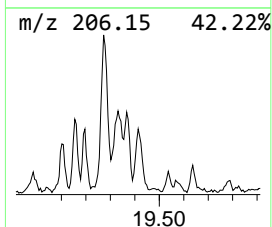
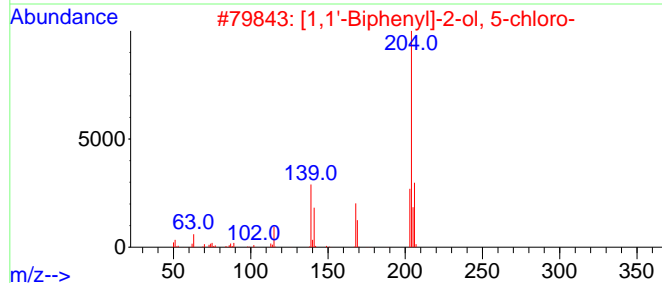
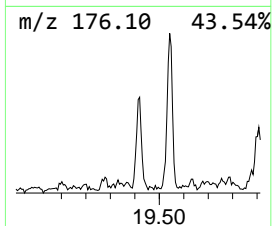
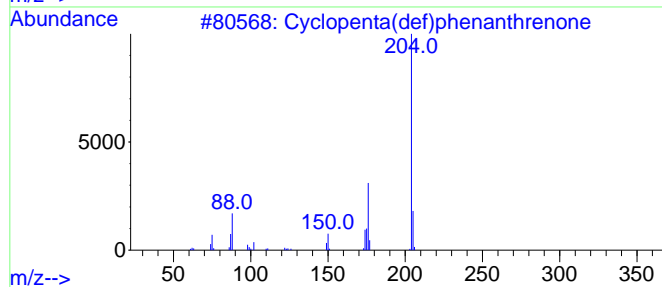
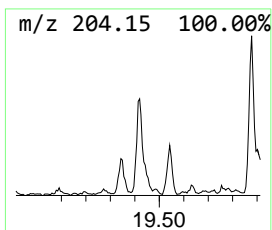
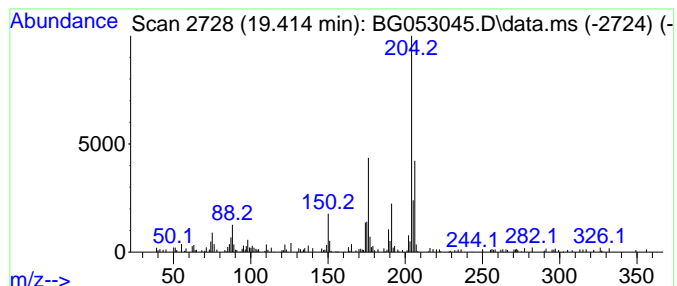
TIC Library : C:\Database\NIST20.L  
 TIC Integration Parameters: LSCINT.P

\*\*\*\*\*  
 Peak Number 14 Cyclopenta(def)phenanthrene Concentration Rank 9

R.T.	EstConc	Area	Relative to ISTD	R.T.
19.414	3.89 ng	142474	Phenanthrene-d10	17.493

Hit#	of 5	Tentative ID	MW	MolForm	CAS#	Qual
1		Cyclopenta(def)phenanthrene	204	C15H8O	005737-13-3	58
2		[1,1'-Biphenyl]-2-ol, 5-chloro-	204	C12H9ClO	000607-12-5	46
3		Pyrimido[5,4-b]benzofurane, 4-ch...	204	C10H5ClN2O	039876-88-5	38
4		1-Aminocyclopentanecarboxylic ac...	431	C23H42ClNO4	1000392-63-0	37
5		5,6,7,8-Tetrahydrothieno[2,3-b]q...	204	C11H12N2S	122914-50-5	37



Data Path : Z:\svoasrv\HPCHEM1\BNA\_G\Data\BG040522\  
 Data File : BG053045.D  
 Acq On : 5 Apr 2022 23:44  
 Operator : CG/JU  
 Sample : N2257-01 5X  
 Misc :  
 ALS Vial : 13 Sample Multiplier: 1

Instrument :  
 BNA\_G  
 ClientSampleId :  
 TP-1

Quant Method : Z:\svoasrv\HPCHEM1\BNA\_G\Methods\8270-BG031522.M  
 Quant Title : ASP BNA STANDARDS FOR 5 POINT CALIBRATION

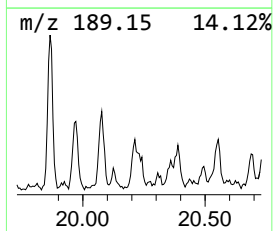
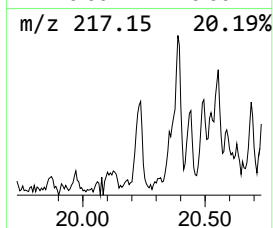
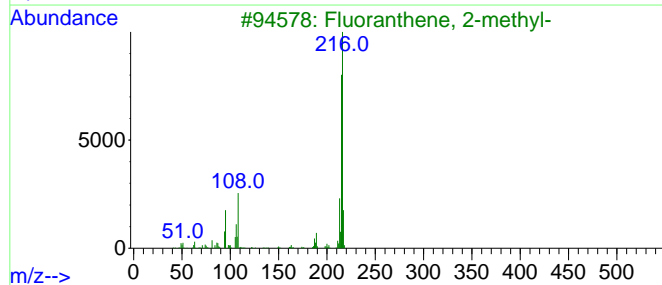
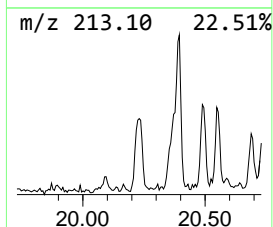
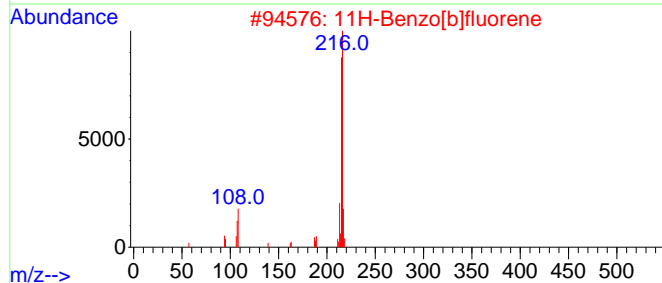
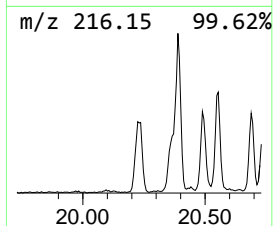
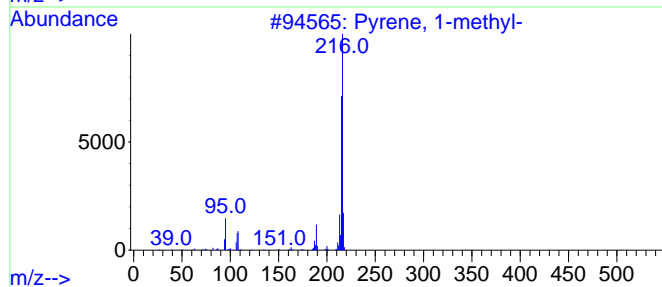
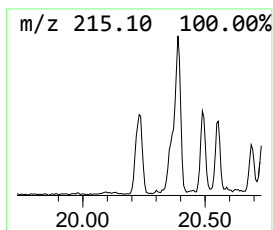
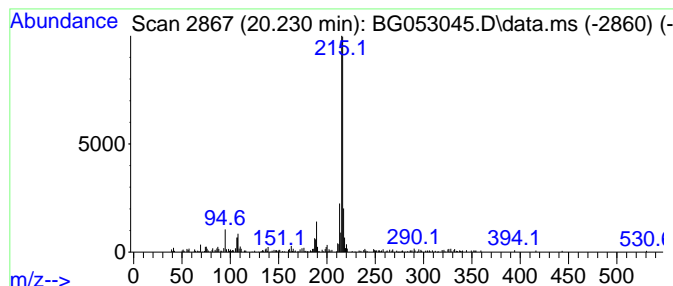
TIC Library : C:\Database\NIST20.L  
 TIC Integration Parameters: LSCINT.P

\*\*\*\*\*  
 Peak Number 15 Pyrene, 1-methyl- Concentration Rank 14

R.T.	EstConc	Area	Relative to ISTD	R.T.
20.230	3.45 ng	297669	Chrysene-d12	21.781

Hit#	of 5	Tentative ID	MW	MolForm	CAS#	Qual
1		Pyrene, 1-methyl-	216	C17H12	002381-21-7	96
2		11H-Benzo[b]fluorene	216	C17H12	000243-17-4	95
3		Fluoranthene, 2-methyl-	216	C17H12	033543-31-6	91
4		7H-Benzo[c]fluorene	216	C17H12	000205-12-9	72
5		Pyrene, 2-methyl-	216	C17H12	003442-78-2	68



Data Path : Z:\svoasrv\HPCHEM1\BNA\_G\Data\BG040522\  
 Data File : BG053045.D  
 Acq On : 5 Apr 2022 23:44  
 Operator : CG/JU  
 Sample : N2257-01 5X  
 Misc :  
 ALS Vial : 13 Sample Multiplier: 1

Instrument :  
 BNA\_G  
 ClientSampleId :  
 TP-1

Quant Method : Z:\svoasrv\HPCHEM1\BNA\_G\Methods\8270-BG031522.M  
 Quant Title : ASP BNA STANDARDS FOR 5 POINT CALIBRATION

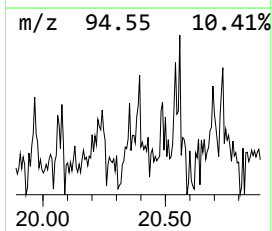
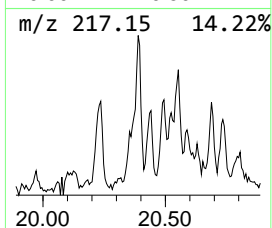
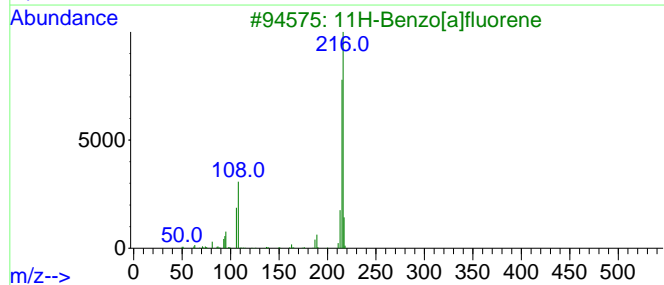
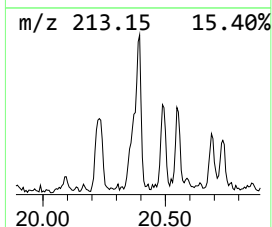
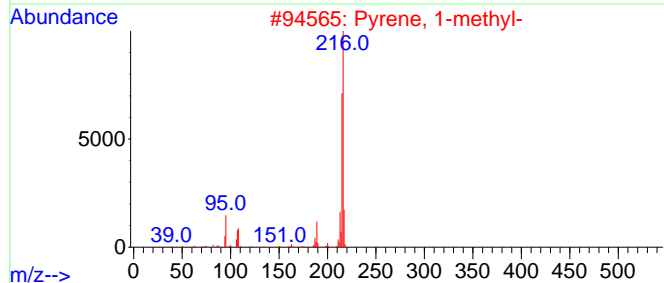
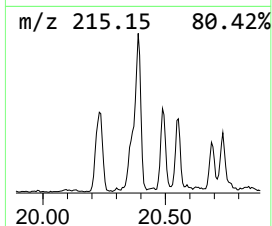
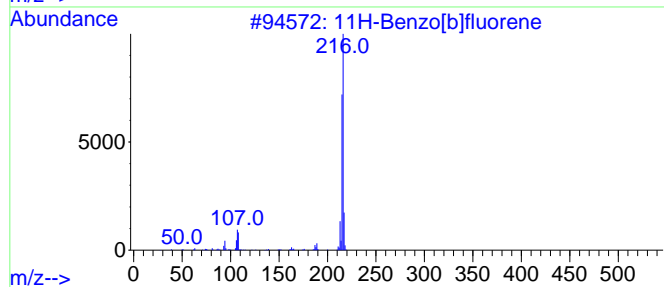
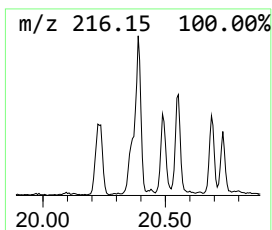
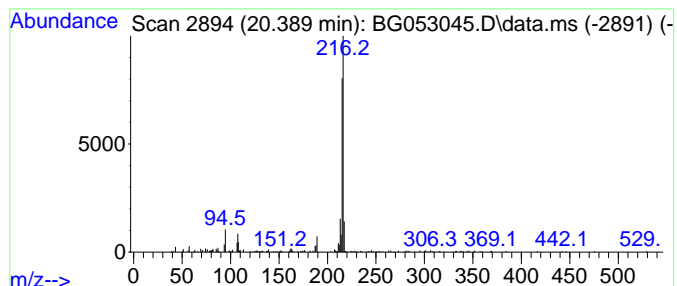
TIC Library : C:\Database\NIST20.L  
 TIC Integration Parameters: LSCINT.P

\*\*\*\*\*  
 Peak Number 16 11H-Benzo[b]fluorene Concentration Rank 15

R.T.	EstConc	Area	Relative to ISTD	R.T.
20.389	3.02 ng	260509	Chrysene-d12	21.781

Hit#	of 5	Tentative ID	MW	MolForm	CAS#	Qual
1		11H-Benzo[b]fluorene	216	C17H12	000243-17-4	87
2		Pyrene, 1-methyl-	216	C17H12	002381-21-7	86
3		11H-Benzo[a]fluorene	216	C17H12	000238-84-6	86
4		7H-Benzo[c]fluorene	216	C17H12	000205-12-9	80
5		Fluoranthene, 2-methyl-	216	C17H12	033543-31-6	74



Data Path : Z:\svoasrv\HPCHEM1\BNA\_G\Data\BG040522\  
 Data File : BG053045.D  
 Acq On : 5 Apr 2022 23:44  
 Operator : CG/JU  
 Sample : N2257-01 5X  
 Misc :  
 ALS Vial : 13 Sample Multiplier: 1

Instrument :  
 BNA\_G  
 ClientSampleId :  
 TP-1

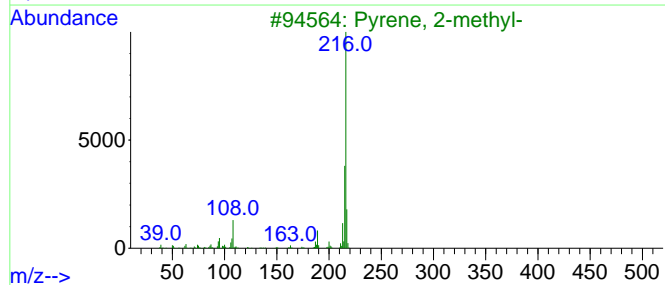
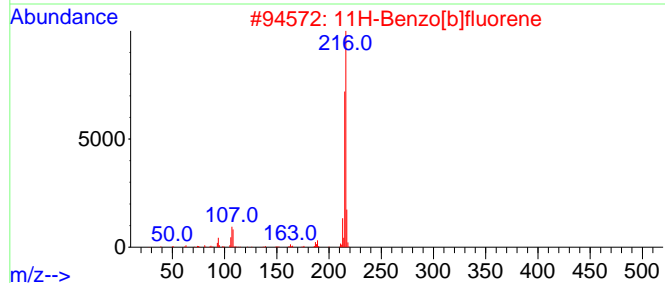
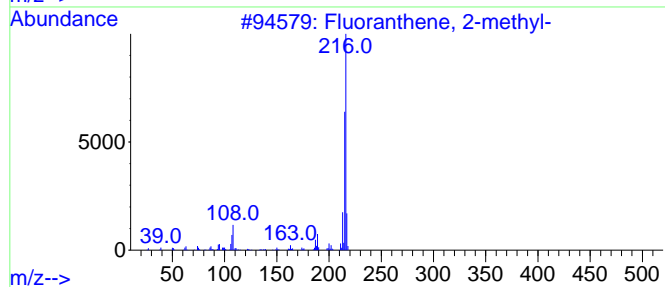
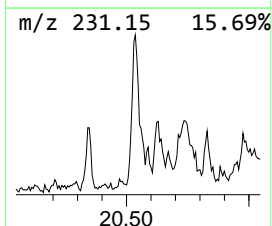
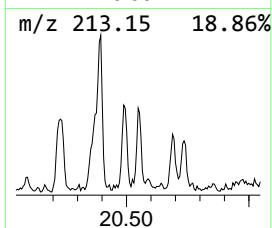
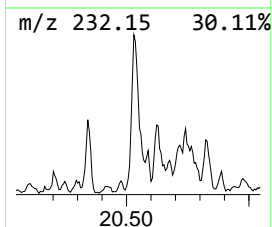
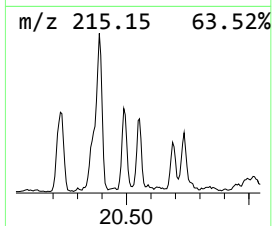
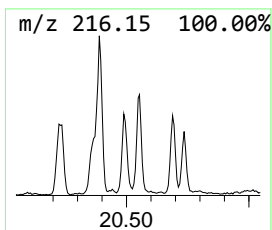
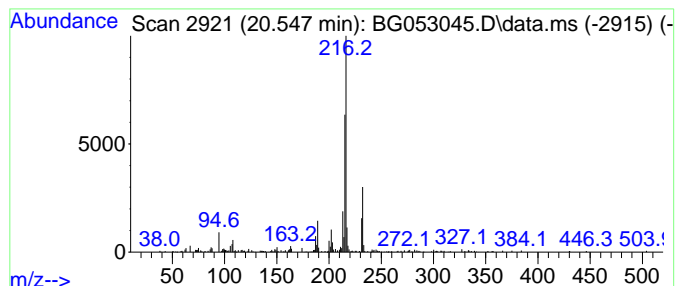
Quant Method : Z:\svoasrv\HPCHEM1\BNA\_G\Methods\8270-BG031522.M  
 Quant Title : ASP BNA STANDARDS FOR 5 POINT CALIBRATION

TIC Library : C:\Database\NIST20.L  
 TIC Integration Parameters: LSCINT.P

\*\*\*\*\*  
 Peak Number 17 Fluoranthene, 2-methyl- Concentration Rank 17

R.T.	EstConc	Area	Relative to ISTD	R.T.
20.547	2.75 ng	237694	Chrysene-d12	21.781

Hit#	of 5	Tentative ID	MW	MolForm	CAS#	Qual
1		Fluoranthene, 2-methyl-	216	C17H12	033543-31-6	83
2		11H-Benzo[b]fluorene	216	C17H12	000243-17-4	70
3		Pyrene, 2-methyl-	216	C17H12	003442-78-2	64
4		11H-Benzo[a]fluorene	216	C17H12	000238-84-6	58
5		Pyrene, 1-methyl-	216	C17H12	002381-21-7	58



Data Path : Z:\svoasrv\HPCHEM1\BNA\_G\Data\BG040522\  
 Data File : BG053045.D  
 Acq On : 5 Apr 2022 23:44  
 Operator : CG/JU  
 Sample : N2257-01 5X  
 Misc :  
 ALS Vial : 13 Sample Multiplier: 1

Instrument :  
 BNA\_G  
 ClientSampleId :  
 TP-1

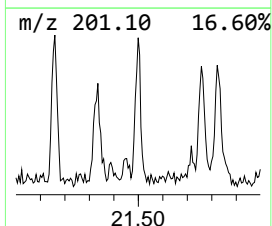
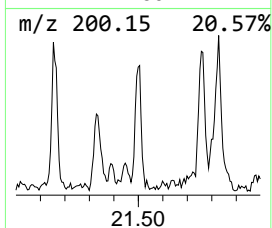
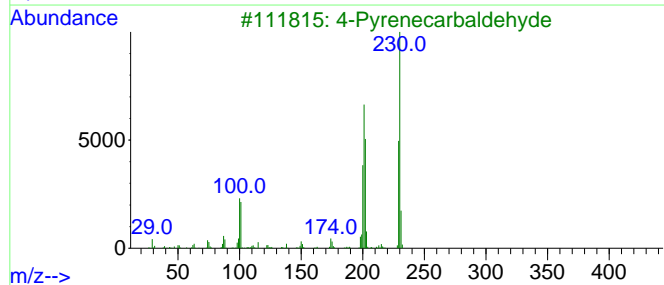
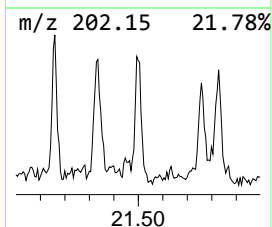
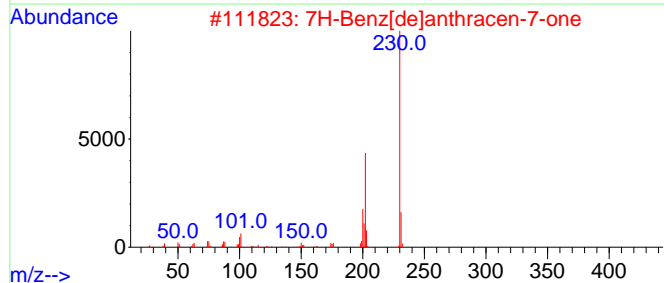
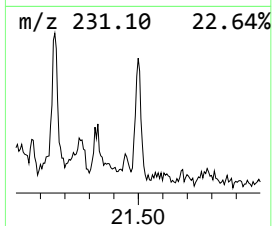
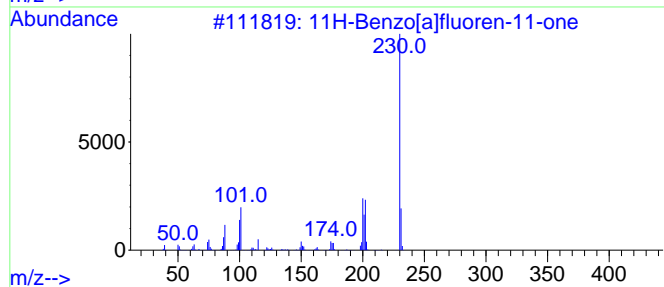
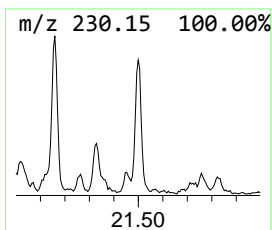
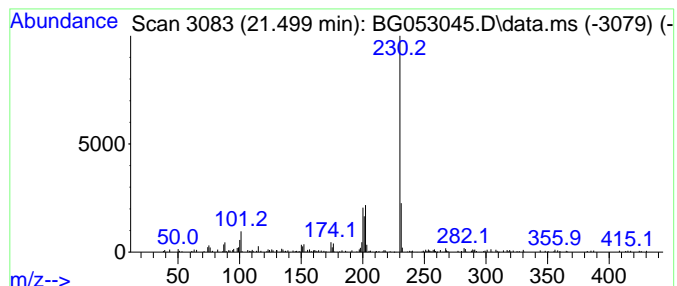
Quant Method : Z:\svoasrv\HPCHEM1\BNA\_G\Methods\8270-BG031522.M  
 Quant Title : ASP BNA STANDARDS FOR 5 POINT CALIBRATION

TIC Library : C:\Database\NIST20.L  
 TIC Integration Parameters: LSCINT.P

\*\*\*\*\*  
 Peak Number 18 11H-Benzo[a]fluoren-11-one Concentration Rank 20

R.T.	EstConc	Area	Relative to ISTD	R.T.
21.499	2.47 ng	213047	Chrysene-d12	21.781

Hit#	of	5	Tentative ID	MW	MolForm	CAS#	Qual
1			11H-Benzo[a]fluoren-11-one	230	C17H10O	000479-79-8	97
2			7H-Benz[de]anthracen-7-one	230	C17H10O	000082-05-3	90
3			4-Pyrenecarbaldehyde	230	C17H10O	022245-51-8	80
4			1-Pyrenecarboxaldehyde	230	C17H10O	003029-19-4	72
5			o-Terphenyl	230	C18H14	000084-15-1	64



Data Path : Z:\svoasrv\HPCHEM1\BNA\_G\Data\BG040522\  
 Data File : BG053045.D  
 Acq On : 5 Apr 2022 23:44  
 Operator : CG/JU  
 Sample : N2257-01 5X  
 Misc :  
 ALS Vial : 13 Sample Multiplier: 1

Instrument :  
 BNA\_G  
 ClientSampleId :  
 TP-1

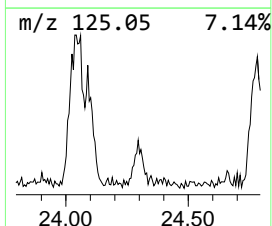
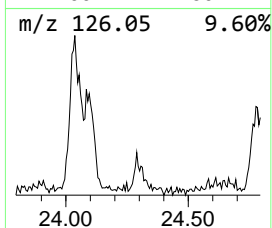
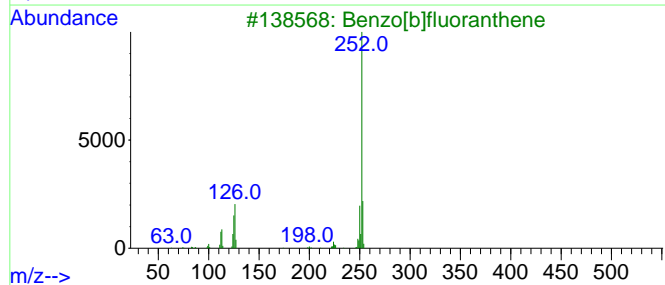
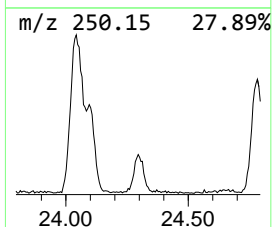
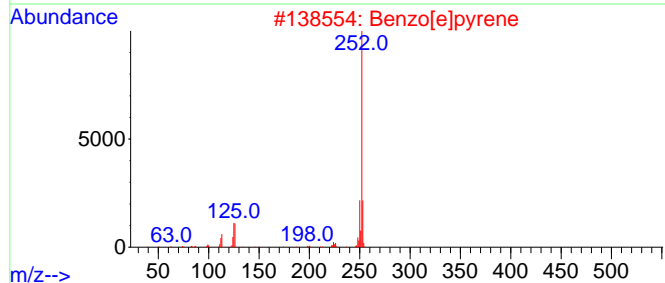
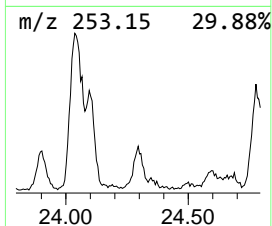
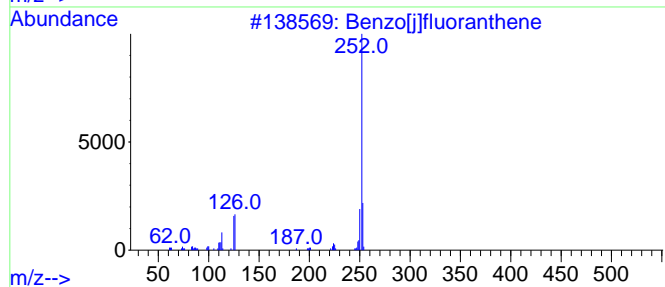
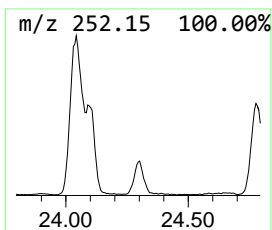
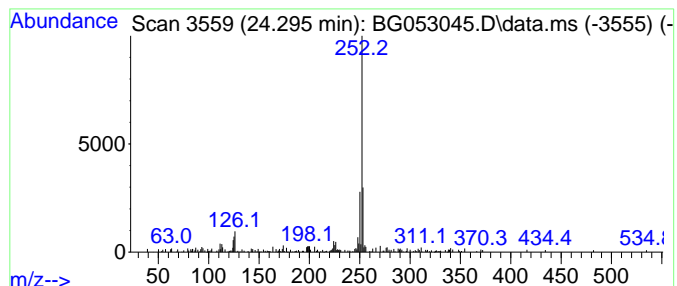
Quant Method : Z:\svoasrv\HPCHEM1\BNA\_G\Methods\8270-BG031522.M  
 Quant Title : ASP BNA STANDARDS FOR 5 POINT CALIBRATION

TIC Library : C:\Database\NIST20.L  
 TIC Integration Parameters: LSCINT.P

\*\*\*\*\*  
 Peak Number 19 Benzo[j]fluoranthene Concentration Rank 8

R.T.	EstConc	Area	Relative to ISTD	R.T.
24.295	4.40 ng	132425	Perylene-d12	25.088

Hit#	of	5	Tentative ID	MW	MolForm	CAS#	Qual
1			Benzo[j]fluoranthene	252	C20H12	000205-82-3	76
2			Benzo[e]pyrene	252	C20H12	000192-97-2	74
3			Benzo[b]fluoranthene	252	C20H12	000205-99-2	72
4			Benzo[a]pyrene	252	C20H12	000050-32-8	68
5			Benzo[k]fluoranthene	252	C20H12	000207-08-9	68



Data Path : Z:\svoasrv\HPCHEM1\BNA\_G\Data\BG040522\  
 Data File : BG053045.D  
 Acq On : 5 Apr 2022 23:44  
 Operator : CG/JU  
 Sample : N2257-01 5X  
 Misc :  
 ALS Vial : 13 Sample Multiplier: 1

Instrument :  
 BNA\_G  
 ClientSampleId :  
 TP-1

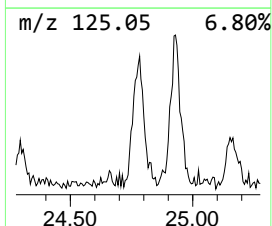
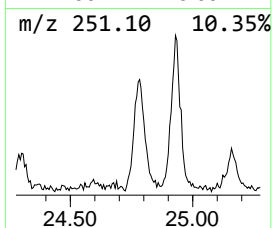
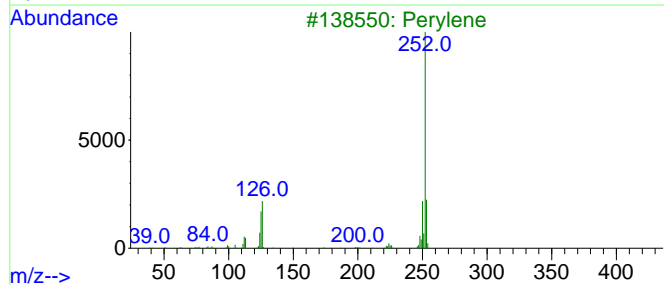
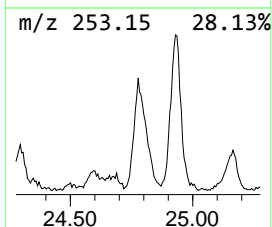
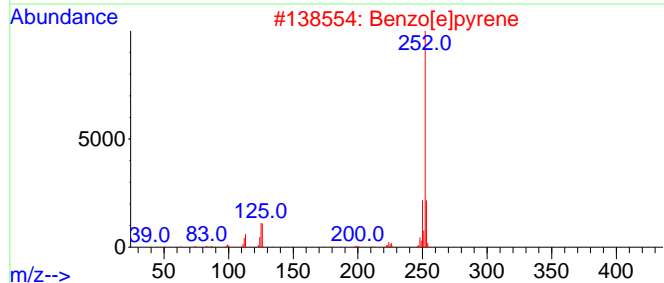
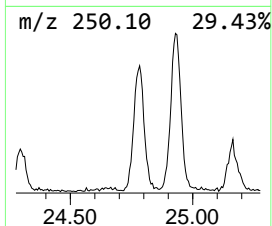
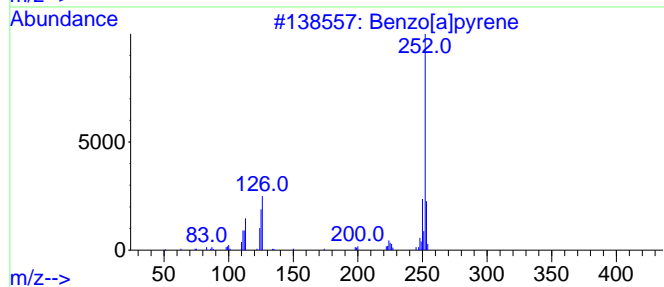
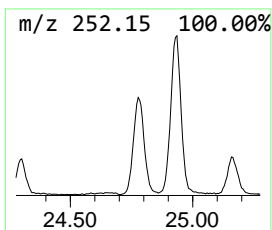
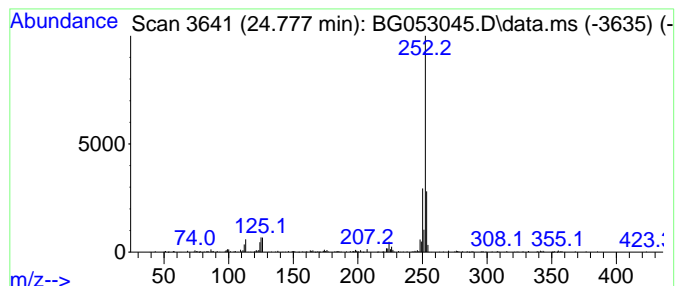
Quant Method : Z:\svoasrv\HPCHEM1\BNA\_G\Methods\8270-BG031522.M  
 Quant Title : ASP BNA STANDARDS FOR 5 POINT CALIBRATION

TIC Library : C:\Database\NIST20.L  
 TIC Integration Parameters: LSCINT.P

\*\*\*\*\*  
 Peak Number 20 Benzo[e]pyrene Concentration Rank 1

R.T.	EstConc	Area	Relative to ISTD	R.T.
24.777	19.05 ng	573833	Perylene-d12	25.088

Hit#	of	5	Tentative ID	MW	MolForm	CAS#	Qual
1			Benzo[a]pyrene	252	C20H12	000050-32-8	93
2			Benzo[e]pyrene	252	C20H12	000192-97-2	90
3			Perylene	252	C20H12	000198-55-0	90
4			Benzo[k]fluoranthene	252	C20H12	000207-08-9	86
5			Benzo[b]fluoranthene	252	C20H12	000205-99-2	81





Data Path : Z:\svoasrv\HPCHEM1\BNA\_G\Data\BG040522\  
 Data File : BG053045.D  
 Acq On : 5 Apr 2022 23:44  
 Operator : CG/JU  
 Sample : N2257-01 5X  
 Misc :  
 ALS Vial : 13 Sample Multiplier: 1

Instrument :  
 BNA\_G  
 ClientSampleId :  
 TP-1

Quant Method : Z:\svoasrv\HPCHEM1\BNA\_G\Methods\8270-BG031522.M  
 Quant Title : ASP BNA STANDARDS FOR 5 POINT CALIBRATION

TIC Library : C:\Database\NIST20.L  
 TIC Integration Parameters: LSCINT.P

TIC Top Hit name	RT	EstConc	Units	Response	--Internal Standard--			
					#	RT	Resp	Conc
Dibenzofuran, 4...	16.083	2.5	ng	88537	3	14.749	693410	20.0
9H-Fluorene, 2-...	16.799	2.6	ng	95933	4	17.493	732804	20.0
9H-Fluoren-9-one	17.140	2.9	ng	104977	4	17.493	732804	20.0
Dibenzothiophene	17.311	3.6	ng	133230	4	17.493	732804	20.0
Phenanthrene, 1...	18.368	7.8	ng	286294	4	17.493	732804	20.0
Anthracene, 1-m...	18.415	9.2	ng	337226	4	17.493	732804	20.0
1H-Cyclopropa[1...	18.497	3.5	ng	128999	4	17.493	732804	20.0
4H-Cyclopenta[d...	18.568	11.5	ng	420061	4	17.493	732804	20.0
1H-Indene, 1-ph...	18.597	3.7	ng	137211	4	17.493	732804	20.0
5,16[1',2']:8,1...	18.861	4.9	ng	179912	4	17.493	732804	20.0
9,10-Anthracene...	18.903	4.5	ng	164863	4	17.493	732804	20.0
Anthracene, 1,4...	19.102	3.7	ng	134295	4	17.493	732804	20.0
Phenanthrene, 2...	19.278	5.0	ng	181893	4	17.493	732804	20.0
Cyclopenta(def)...	19.414	3.9	ng	142474	4	17.493	732804	20.0
Pyrene, 1-methyl-	20.230	3.5	ng	297669	5	21.781	1727220	20.0
11H-Benzo[b]flu...	20.389	3.0	ng	260509	5	21.781	1727220	20.0
Fluoranthene, 2...	20.547	2.8	ng	237694	5	21.781	1727220	20.0
11H-Benzo[a]flu...	21.499	2.5	ng	213047	5	21.781	1727220	20.0
Benzo[j]fluoran...	24.295	4.4	ng	132425	6	25.088	602465	20.0
Benzo[e]pyrene	24.777	19.1	ng	573833	6	25.088	602465	20.0