

Data Path : Z:\SVOASRV\HPCHEM1\BNA G\DATA\BG050120\
 Data File : BG045223.D
 Acq On : 1 May 2020 19:37
 Operator : CG/JU
 Sample : L2452-02
 Misc :
 ALS Vial : 9 Sample Multiplier: 1

Instrument :
 BNA_G
 ClientSampleId :
 72-11976

Quant Time: May 02 05:16:04 2020
 Quant Method : Z:\SVOASRV\HPCHEM1\BNA G\METHODS\8270-BG041520.M
 Quant Title : ASP BNA STANDARDS FOR 5 POINT CALIBRATION
 QLast Update : Fri May 01 11:17:49 2020
 Response via : Initial Calibration

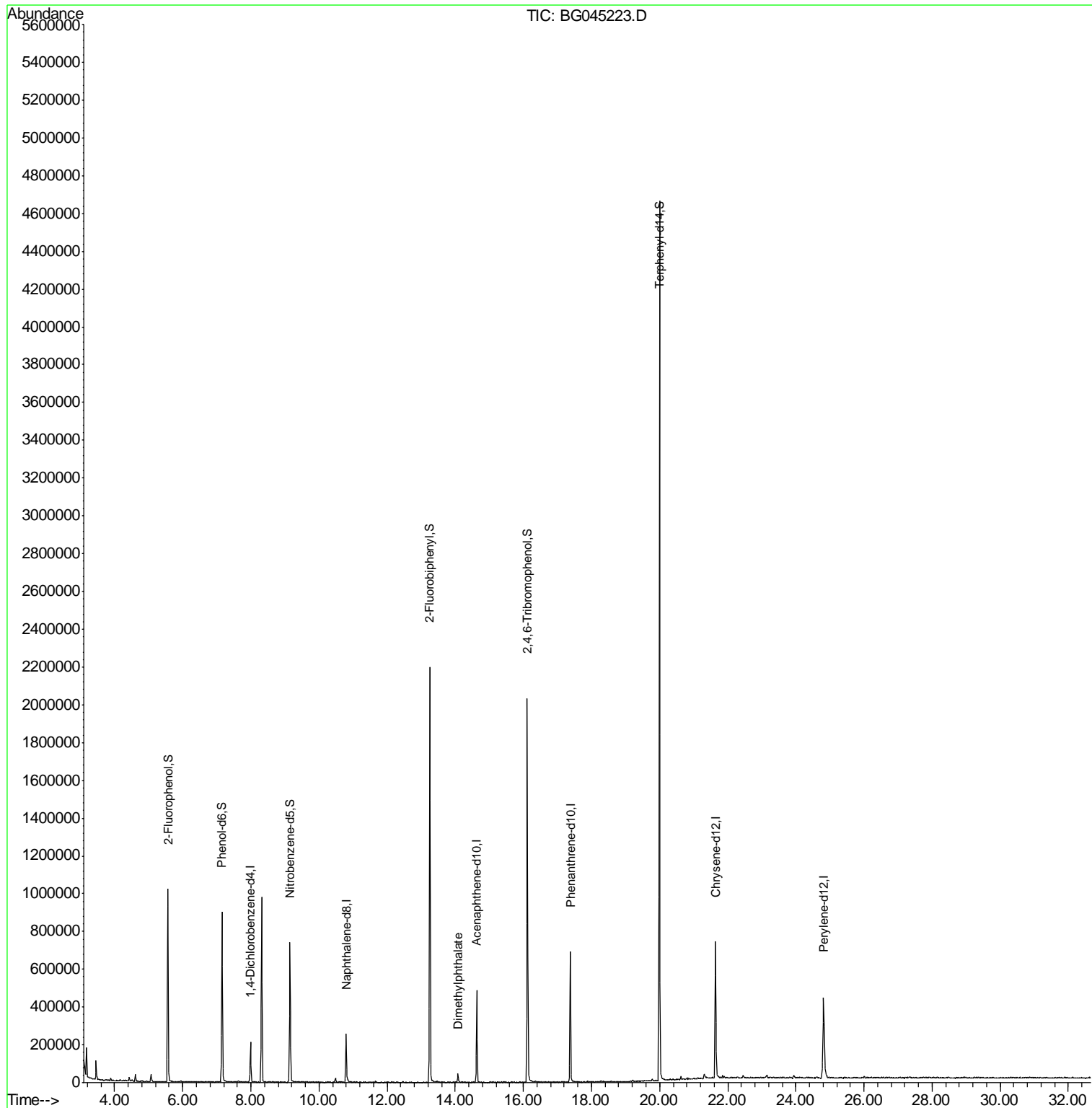
Internal Standards	R.T.	QIon	Response	Conc	Units	Dev(Min)
1) 1,4-Dichlorobenzene-d4	7.99	152	62668	20.00	ng	0.00
21) Naphthalene-d8	10.80	136	234370	20.00	ng	0.00
39) Acenaphthene-d10	14.63	164	182067	20.00	ng	0.00
64) Phenanthrene-d10	17.38	188	465735	20.00	ng	0.00
76) Chrysene-d12	21.65	240	488889	20.00	ng	0.00
87) Perylene-d12	24.82	264	508302	20.00	ng	-0.01
System Monitoring Compounds						
5) 2-Fluorophenol	5.56	112	499897	131.69	ng	0.00
7) Phenol-d6	7.15	99	600929	106.55	ng	0.00
23) Nitrobenzene-d5	9.15	82	522739	101.77	ng	0.00
42) 2,4,6-Tribromophenol	16.12	330	439064	156.10	ng	0.00
45) 2-Fluorobiphenyl	13.25	172	1224741	98.64	ng	0.00
79) Terphenyl-d14	19.99	244	2286500	101.94	ng	0.00
Target Compounds						
50) Dimethylphthalate	14.08	163	34941	2.357	ng	Qvalue # 94

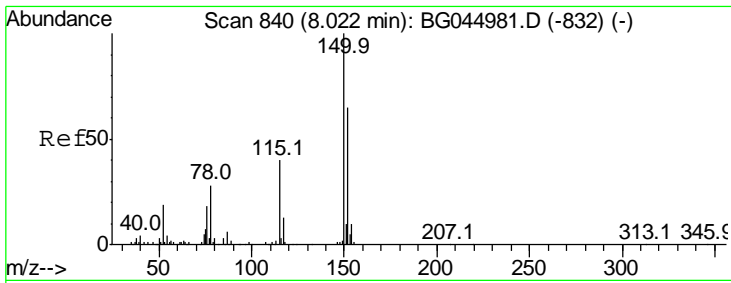
(#) = qualifier out of range (m) = manual integration (+) = signals summed

Data Path : Z:\SVOASRV\HPCHEM1\BNA G\DATA\BG050120\
Data File : BG045223.D
Acq On : 1 May 2020 19:37
Operator : CG/JU
Sample : L2452-02
Misc :
ALS Vial : 9 Sample Multiplier: 1

Instrument :
BNA_G
ClientSampleId :
72-11976

Quant Time: May 02 05:16:04 2020
Quant Method : Z:\SVOASRV\HPCHEM1\BNA G\METHODS\8270-BG041520.M
Quant Title : ASP BNA STANDARDS FOR 5 POINT CALIBRATION
QLast Update : Fri May 01 11:17:49 2020
Response via : Initial Calibration

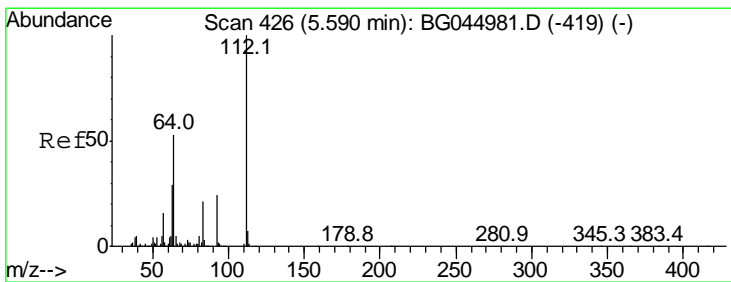
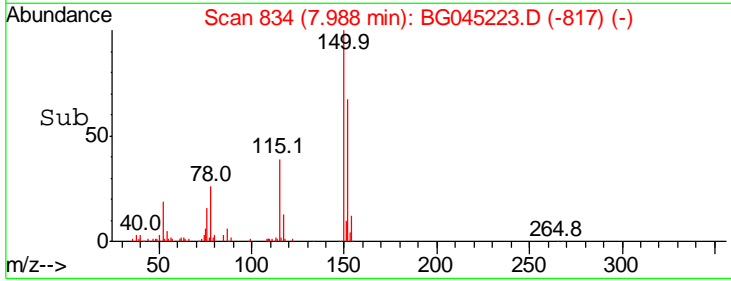
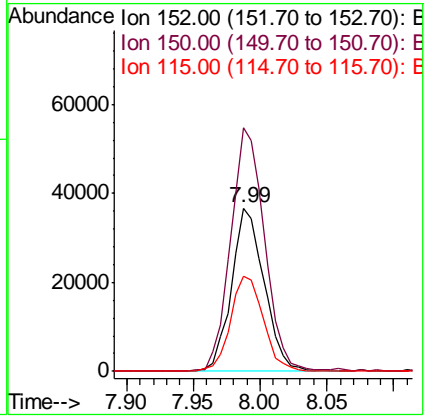
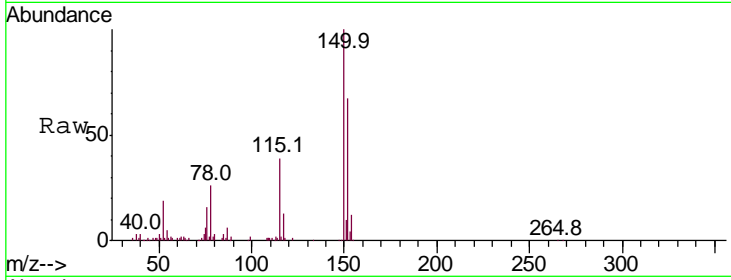




#1
 1,4-Dichlorobenzene-d4
 Concen: 20.000 ng
 RT: 7.99 min Scan# 834
 Delta R.T. 0.00 min
 Lab File: BG045223.D
 Acq: 1 May 2020 19:37

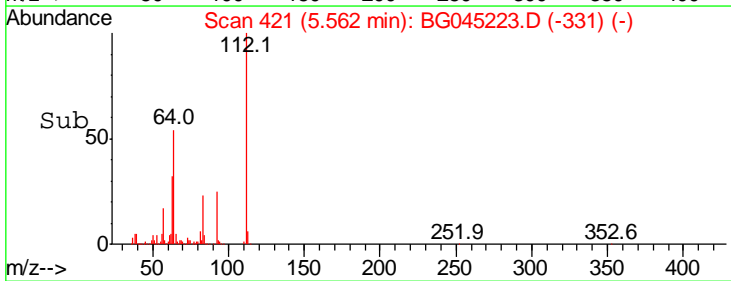
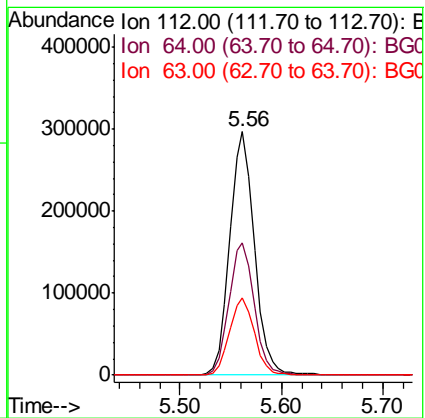
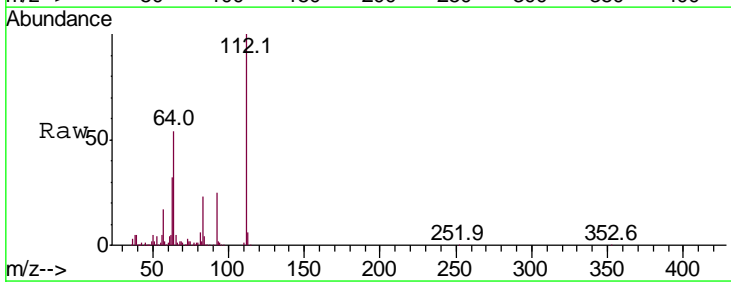
Instrument :
 BNA_G
 ClientSampled :
 72-11976

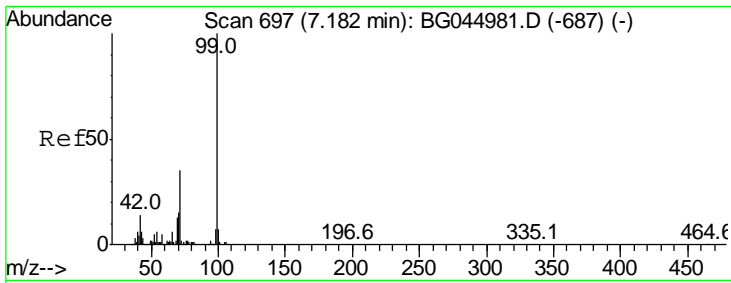
Tgt Ion	Resp	Lower	Upper
152	62668		
150	148.9	123.6	185.4
115	58.3	49.1	73.7



#5
 2-Fluorophenol
 Concen: 131.694 ng
 RT: 5.56 min Scan# 421
 Delta R.T. 0.00 min
 Lab File: BG045223.D
 Acq: 1 May 2020 19:37

Tgt Ion	Resp	Lower	Upper
112	499897		
64	54.1	42.4	63.6
63	31.7	23.1	34.7

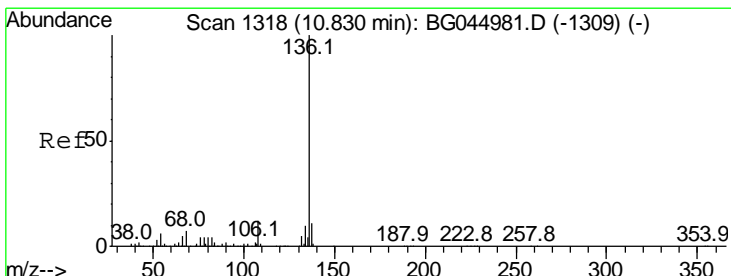
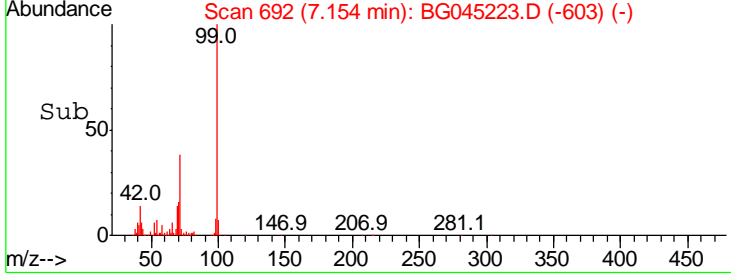
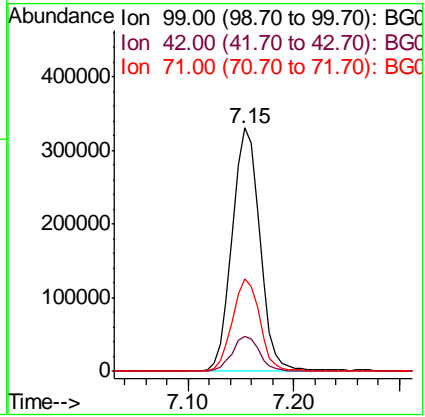
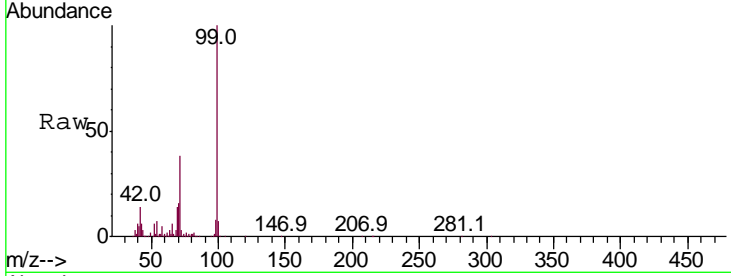




#7
 Phenol-d6
 Concen: 106.553 ng
 RT: 7.15 min Scan# 692
 Delta R.T. -0.00 min
 Lab File: BG045223.D
 Acq: 1 May 2020 19:37

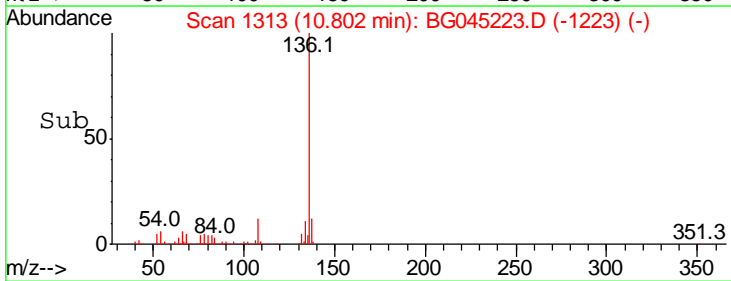
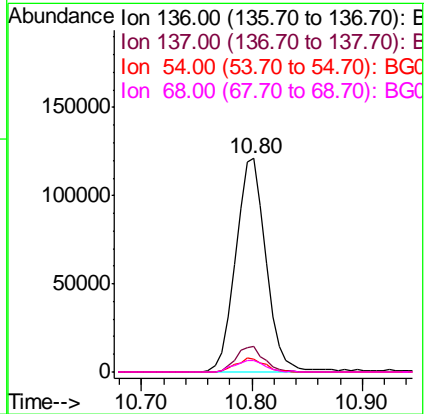
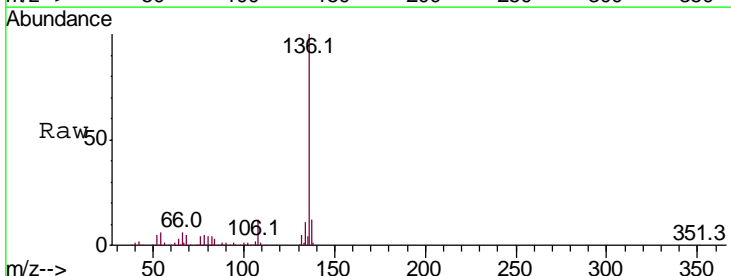
Instrument :
 BNA_G
 ClientSampled :
 72-11976

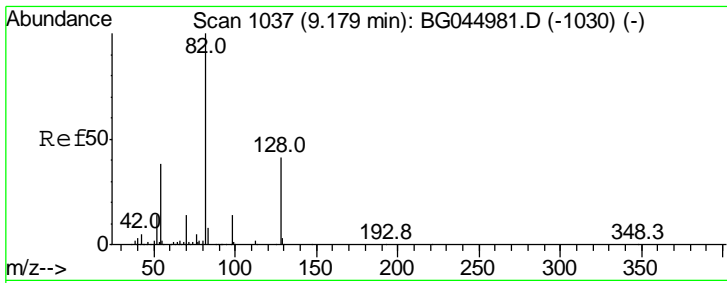
Tgt Ion	Resp	Lower	Upper
99	100		
42	14.4	11.3	16.9
71	38.1	28.3	42.5



#21
 Naphthalene-d8
 Concen: 20.000 ng
 RT: 10.80 min Scan# 1313
 Delta R.T. 0.00 min
 Lab File: BG045223.D
 Acq: 1 May 2020 19:37

Tgt Ion	Resp	Lower	Upper
136	100		
137	11.9	8.6	13.0
54	6.0	4.8	7.2
68	5.2	5.2	7.8#

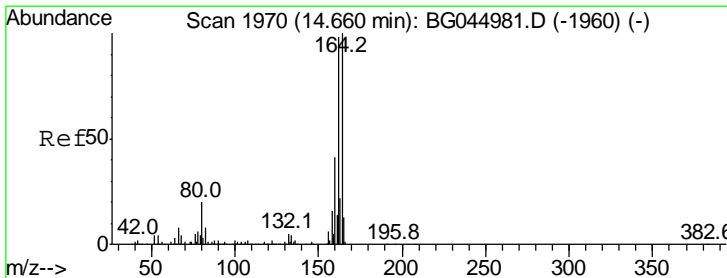
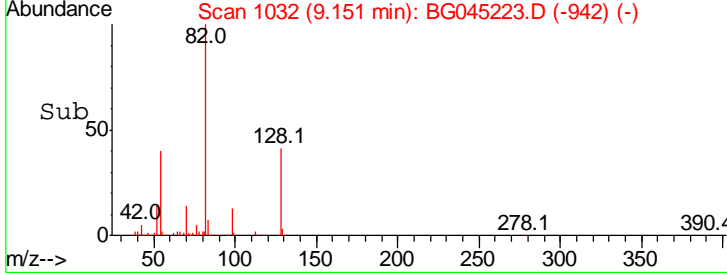
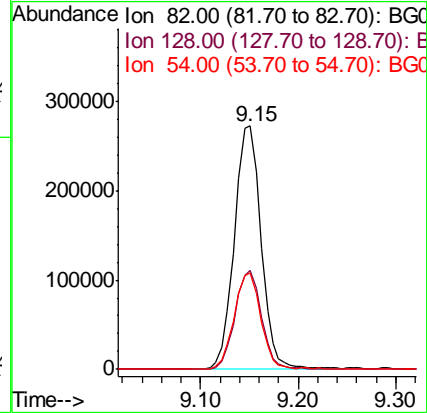
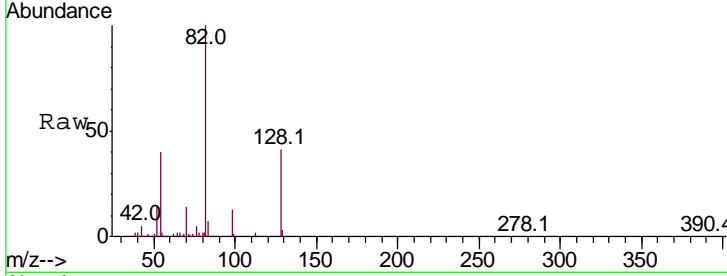




#23
 Nitrobenzene-d5
 Concen: 101.771 ng
 RT: 9.15 min Scan# 1032
 Delta R.T. 0.00 min
 Lab File: BG045223.D
 Acq: 1 May 2020 19:37

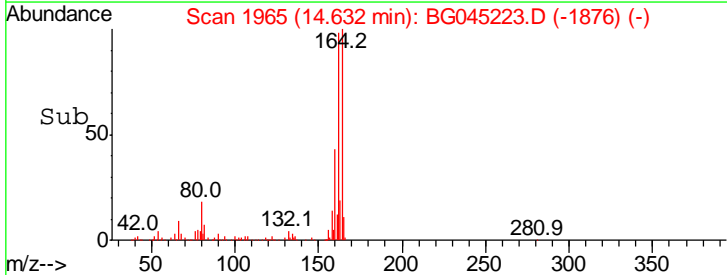
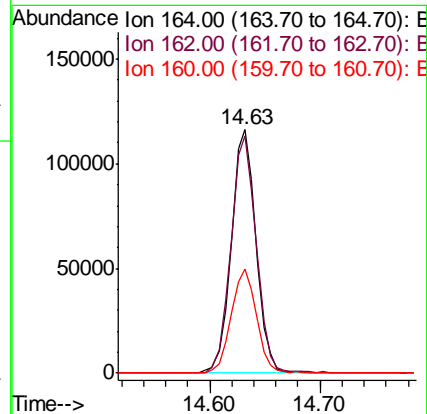
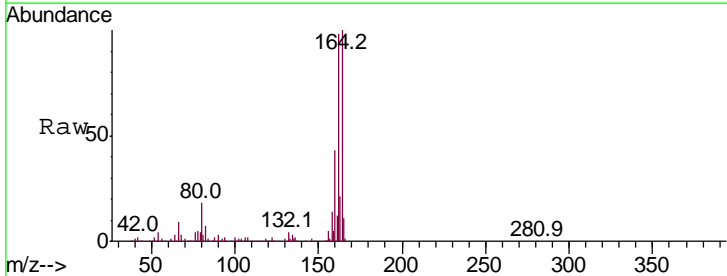
Instrument :
 BNA_G
 ClientSampled :
 72-11976

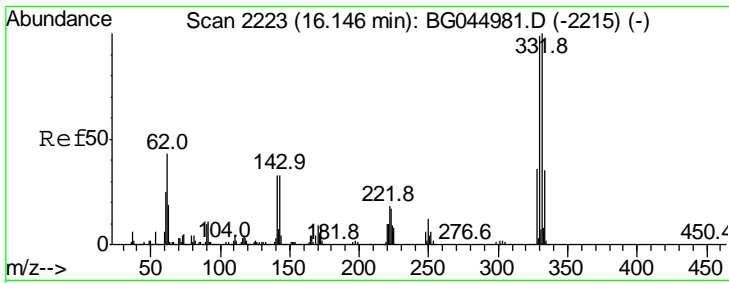
Tgt Ion	Resp	Lower	Upper
82	100		
128	40.8	33.0	49.4
54	39.7	30.4	45.6



#39
 Acenaphthene-d10
 Concen: 20.000 ng
 RT: 14.63 min Scan# 1965
 Delta R.T. -0.00 min
 Lab File: BG045223.D
 Acq: 1 May 2020 19:37

Tgt Ion	Resp	Lower	Upper
164	100		
162	97.6	78.7	118.1
160	42.6	32.8	49.2

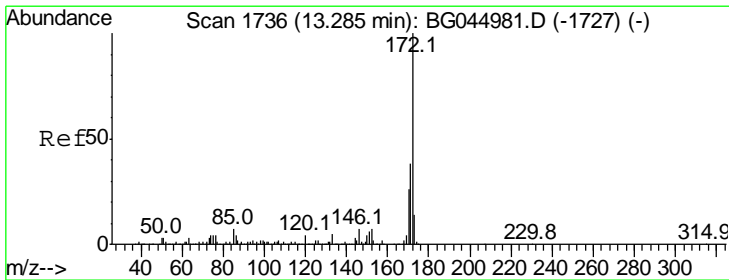
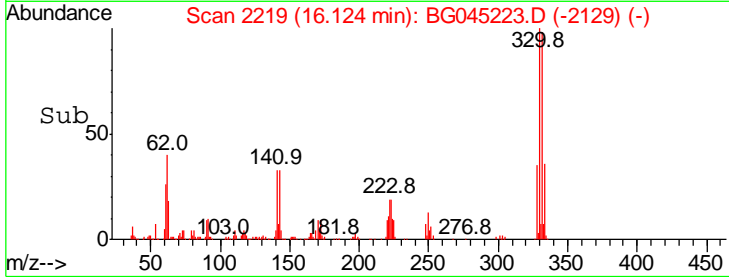
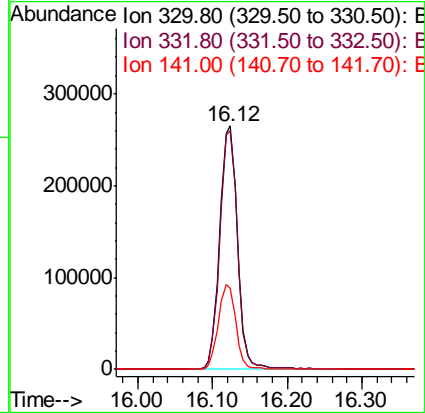
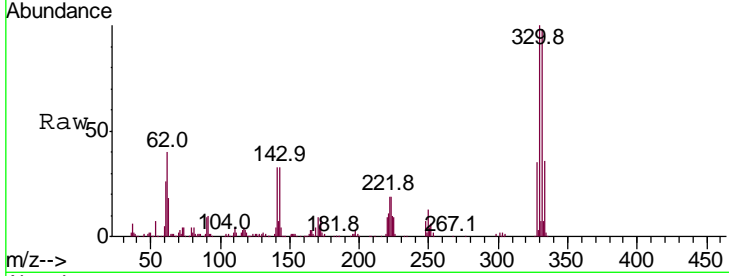




#42
 2,4,6-Tribromophenol
 Concen: 156.101 ng
 RT: 16.12 min Scan# 2219
 Delta R.T. 0.00 min
 Lab File: BG045223.D
 Acq: 1 May 2020 19:37

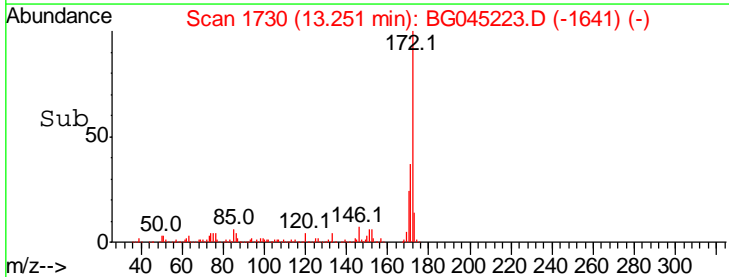
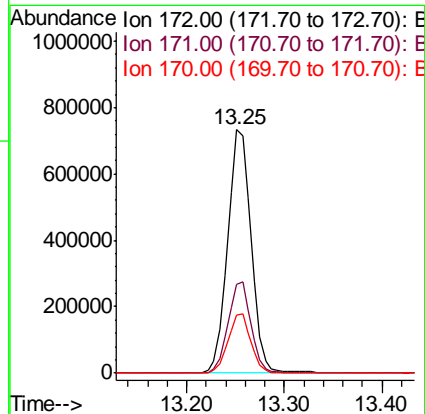
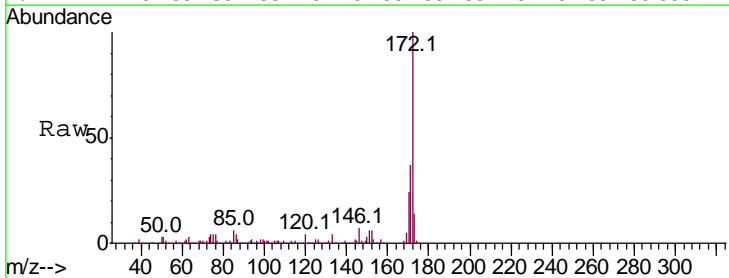
Instrument :
 BNA_G
 ClientSampled :
 72-11976

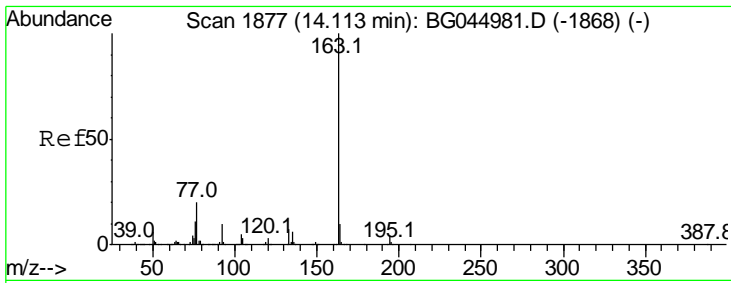
Tgt Ion	Resp	Lower	Upper
330	100		
332	97.2	79.1	118.7
141	34.5	27.1	40.7



#45
 2-Fluorobiphenyl
 Concen: 98.637 ng
 RT: 13.25 min Scan# 1730
 Delta R.T. -0.00 min
 Lab File: BG045223.D
 Acq: 1 May 2020 19:37

Tgt Ion	Resp	Lower	Upper
172	100		
171	36.5	30.6	46.0
170	24.0	20.5	30.7

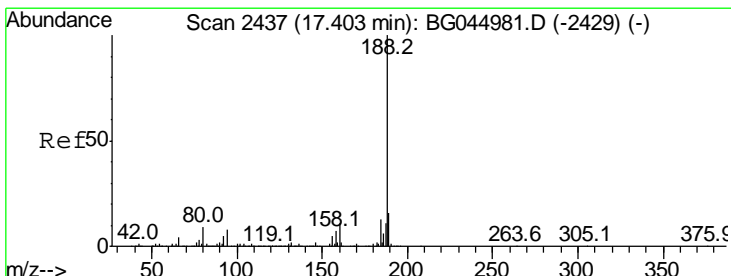
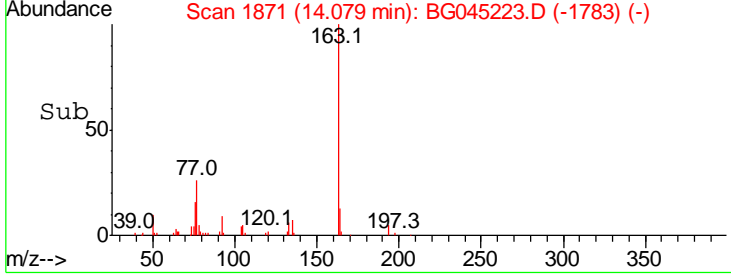
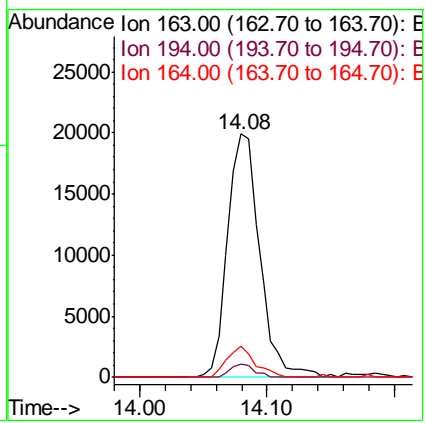
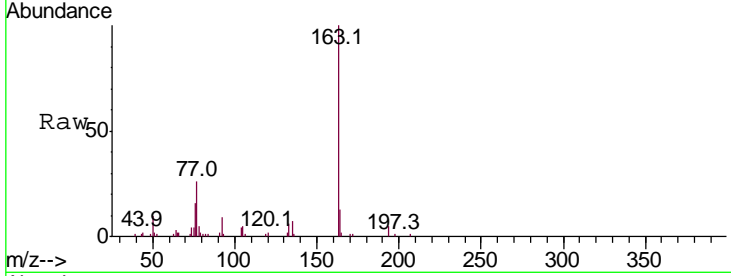




#50
 Dimethylphthalate
 Concen: 2.357 ng
 RT: 14.08 min Scan# 1871
 Delta R.T. -0.01 min
 Lab File: BG045223.D
 Acq: 1 May 2020 19:37

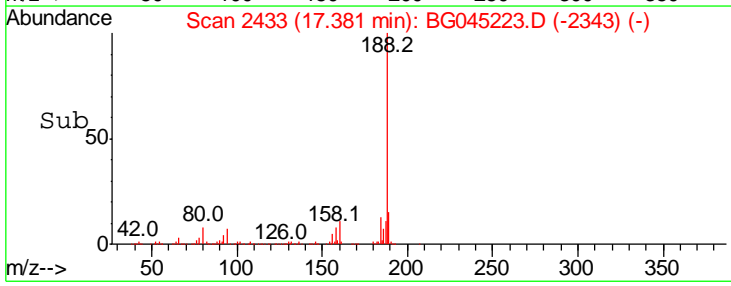
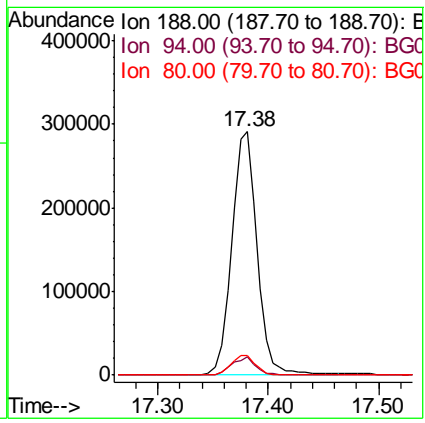
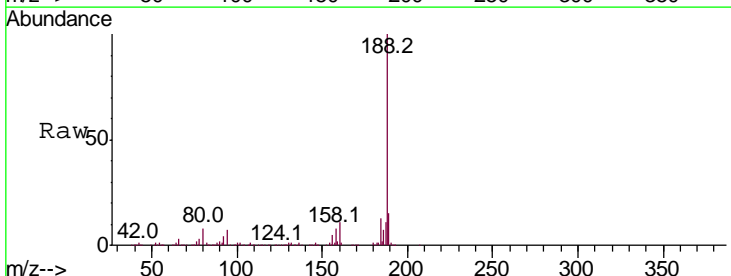
Instrument :
 BNA_G
ClientSampled :
 72-11976

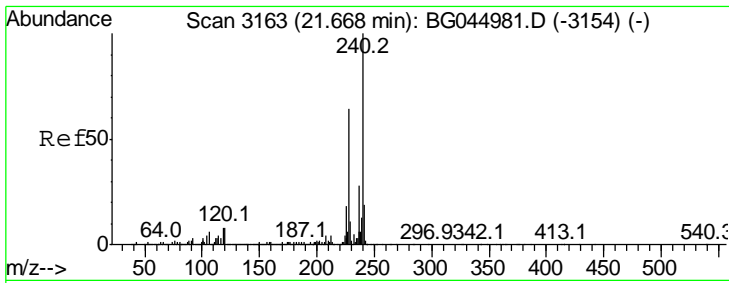
Tgt Ion	Resp	Lower	Upper
163	100		
194	5.5	3.5	5.3#
164	13.0	8.2	12.4#



#64
 Phenanthrene-d10
 Concen: 20.000 ng
 RT: 17.38 min Scan# 2433
 Delta R.T. 0.00 min
 Lab File: BG045223.D
 Acq: 1 May 2020 19:37

Tgt Ion	Resp	Lower	Upper
188	100		
94	7.4	6.2	9.4
80	8.2	7.0	10.6

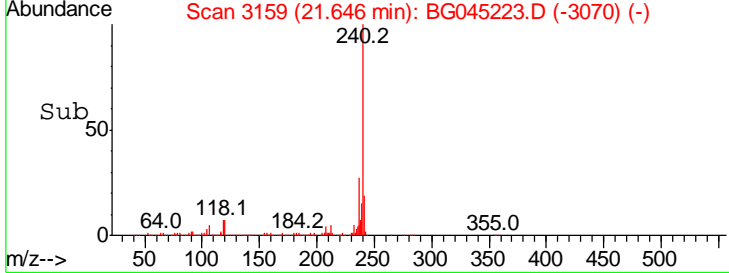
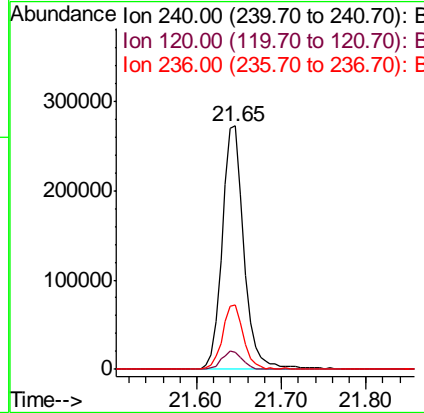
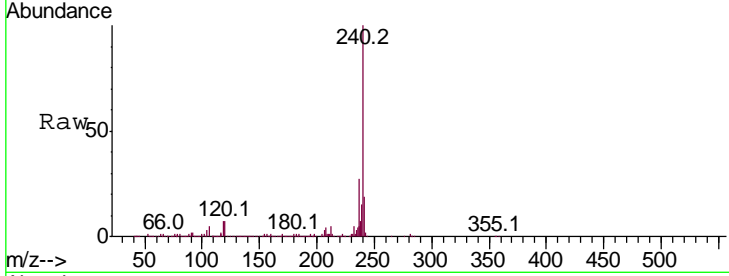




#76
 Chrysene-d12
 Concen: 20.000 ng
 RT: 21.65 min Scan# 3159
 Delta R.T. -0.00 min
 Lab File: BG045223.D
 Acq: 1 May 2020 19:37

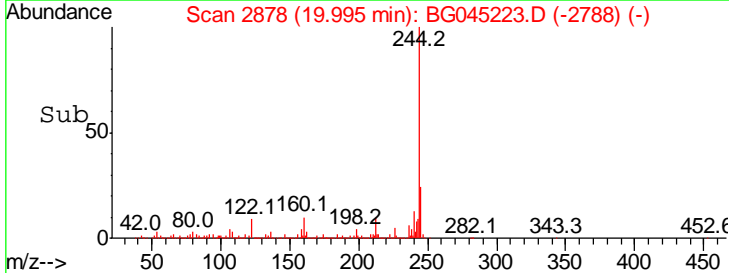
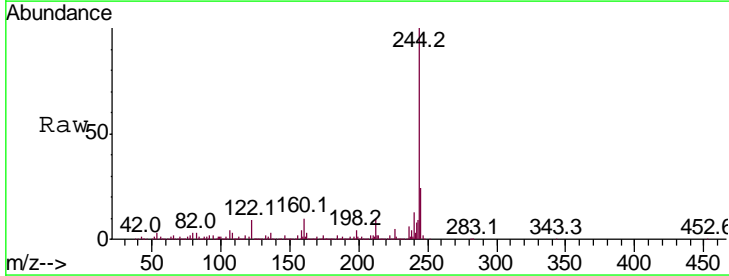
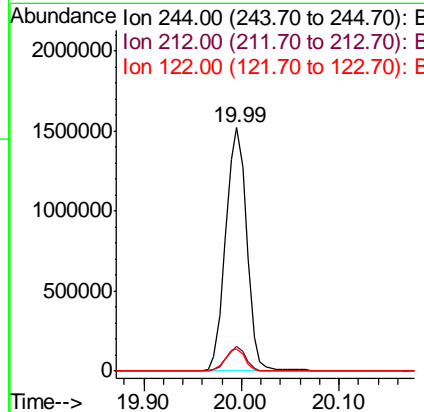
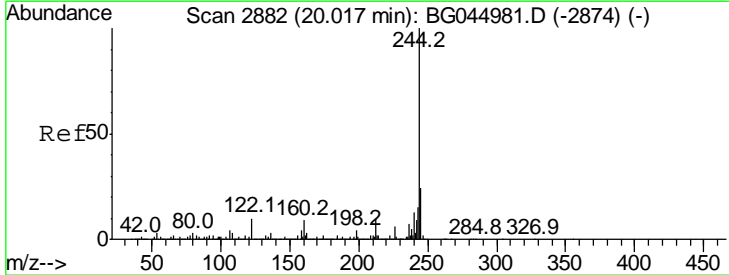
Instrument :
 BNA_G
 ClientSampleId :
 72-11976

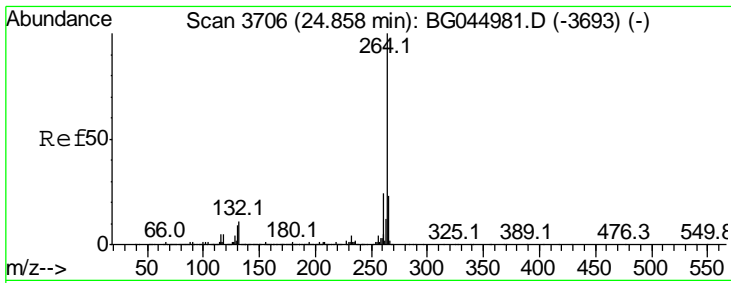
Tgt Ion	Resp	Lower	Upper
240	100		
120	6.8	6.6	10.0
236	26.6	22.2	33.2



#79
 Terphenyl-d14
 Concen: 101.937 ng
 RT: 19.99 min Scan# 2878
 Delta R.T. 0.00 min
 Lab File: BG045223.D
 Acq: 1 May 2020 19:37

Tgt Ion	Resp	Lower	Upper
244	100		
212	10.0	7.9	11.9
122	9.2	7.7	11.5





#87
 Perylene-d12
 Concen: 20.000 ng
 RT: 24.82 min Scan# 3699
 Delta R.T. -0.01 min
 Lab File: BG045223.D
 Acq: 1 May 2020 19:37

Instrument :
 BNA_G
 ClientSampled :
 72-11976

Tot Ion: 264 Resp: 508302

Ion	Ratio	Lower	Upper
264	100		
260	23.4	19.2	28.8
265	22.0	19.0	28.4

