

Data Path : Z:\SVOASRV\HPCHEM1\BNA G\DATA\BG050620\
 Data File : BG045257.D
 Acq On : 6 May 2020 17:39
 Operator : CG/JU
 Sample : L2491-08
 Misc :
 ALS Vial : 10 Sample Multiplier: 1

Instrument :
 BNA_G
 ClientSampleId :
 6FT-TP-11

Quant Time: May 06 18:27:41 2020
 Quant Method : Z:\SVOASRV\HPCHEM1\BNA G\METHODS\8270-BG041520.M
 Quant Title : ASP BNA STANDARDS FOR 5 POINT CALIBRATION
 QLast Update : Wed May 06 12:59:59 2020
 Response via : Initial Calibration

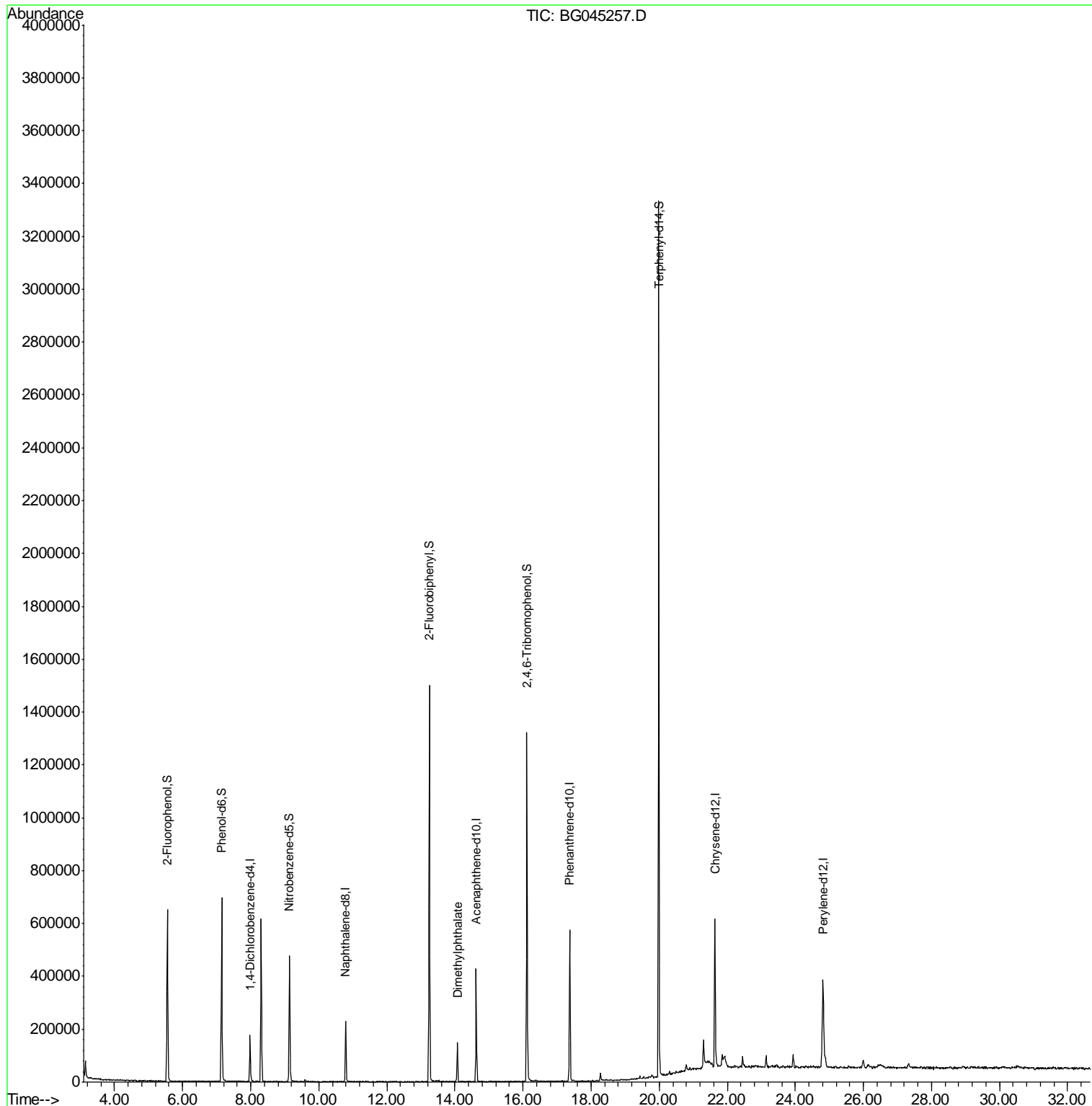
Internal Standards	R.T.	QIon	Response	Conc	Units	Dev(Min)
1) 1,4-Dichlorobenzene-d4	7.98	152	52913	20.00	ng	0.00
21) Naphthalene-d8	10.79	136	213759	20.00	ng	0.00
39) Acenaphthene-d10	14.63	164	157644	20.00	ng	0.00
64) Phenanthrene-d10	17.37	188	384099	20.00	ng	0.00
76) Chrysene-d12	21.64	240	366262	20.00	ng	0.00
87) Perylene-d12	24.82	264	394097	20.00	ng	0.00
System Monitoring Compounds						
5) 2-Fluorophenol	5.55	112	316226	98.67	ng	0.00
7) Phenol-d6	7.15	99	468035	98.29	ng	0.00
23) Nitrobenzene-d5	9.14	82	328067	70.03	ng	0.00
42) 2,4,6-Tribromophenol	16.12	330	279788	114.88	ng	0.00
45) 2-Fluorobiphenyl	13.25	172	837817	77.93	ng	0.00
79) Terphenyl-d14	19.99	244	1567991	93.31	ng	0.00
Target Compounds						Qvalue
50) Dimethylphthalate	14.07	163	106006	8.258	ng	100

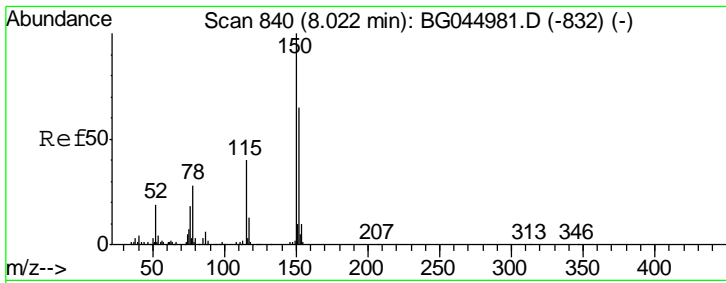
(#) = qualifier out of range (m) = manual integration (+) = signals summed

Data Path : Z:\SVOASRV\HPCHEM1\BNA G\DATA\BG050620\
 Data File : BG045257.D
 Acq On : 6 May 2020 17:39
 Operator : CG/JU
 Sample : L2491-08
 Misc :
 ALS Vial : 10 Sample Multiplier: 1

Instrument :
 BNA_G
 ClientSampleId :
 6FT-TP-11

Quant Time: May 06 18:27:41 2020
 Quant Method : Z:\SVOASRV\HPCHEM1\BNA G\METHODS\8270-BG041520.M
 Quant Title : ASP BNA STANDARDS FOR 5 POINT CALIBRATION
 QLast Update : Wed May 06 12:59:59 2020
 Response via : Initial Calibration

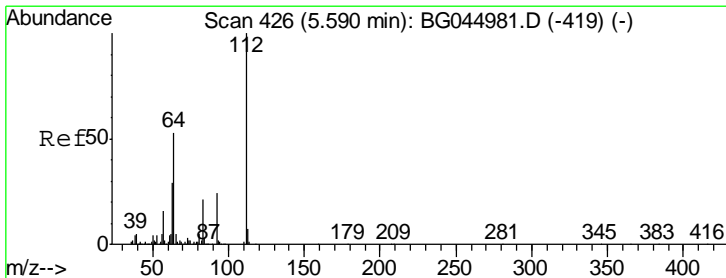
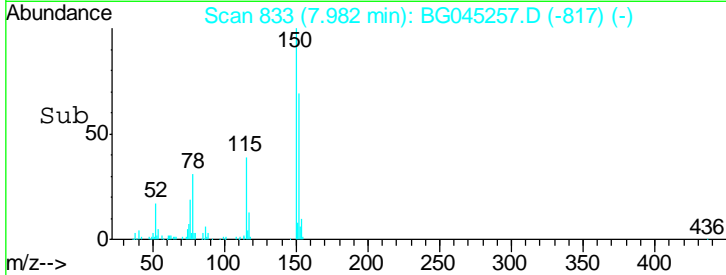
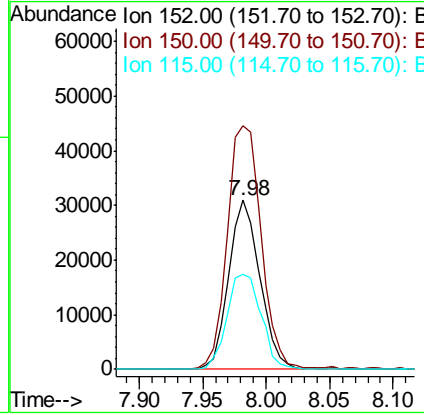
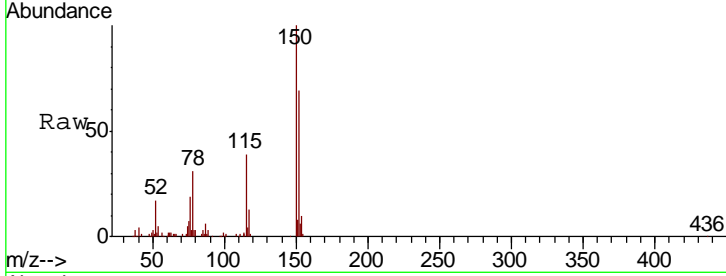




#1
 1,4-Dichlorobenzene-d4
 Concen: 20.000 ng
 RT: 7.98 min Scan# 833
 Delta R.T. -0.00 min
 Lab File: BG045257.D
 Acq: 6 May 2020 17:39

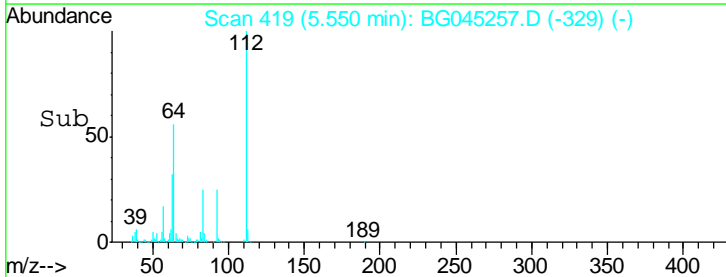
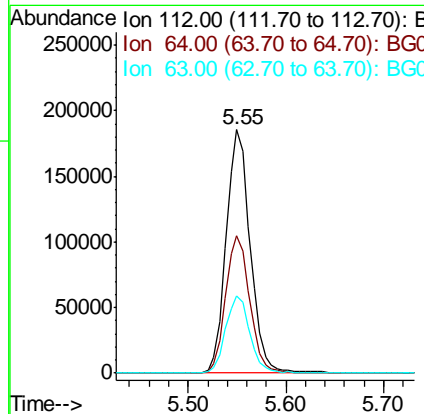
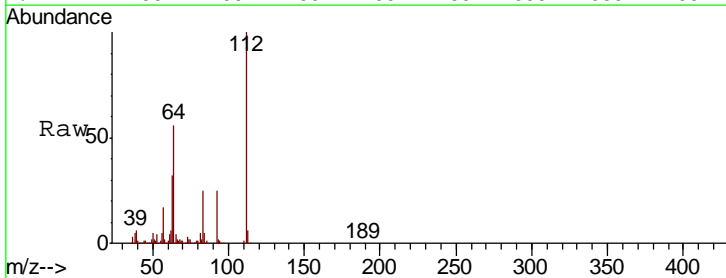
Instrument :
 BNA_G
 ClientSampleId :
 6FT-TP-11

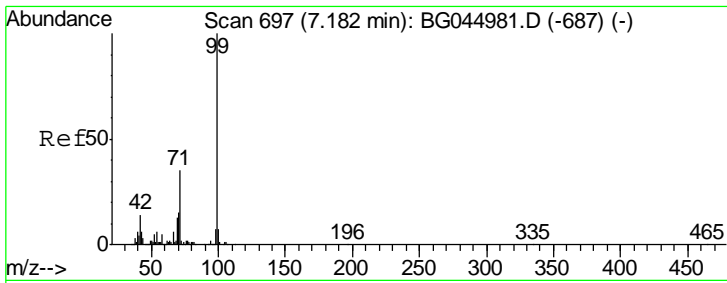
Tgt Ion	Resp	Lower	Upper
152	100		
150	144.0	123.6	185.4
115	56.6	49.1	73.7



#5
 2-Fluorophenol
 Concen: 98.666 ng
 RT: 5.55 min Scan# 419
 Delta R.T. -0.00 min
 Lab File: BG045257.D
 Acq: 6 May 2020 17:39

Tgt Ion	Resp	Lower	Upper
112	100		
64	56.5	42.4	63.6
63	31.5	23.1	34.7

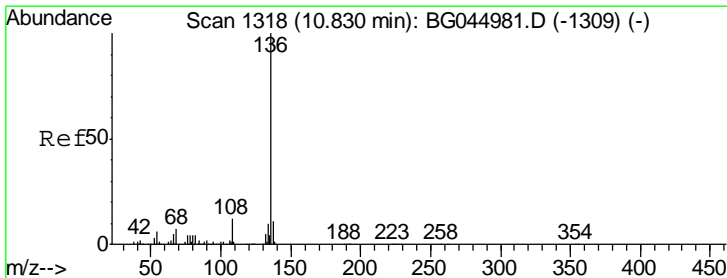
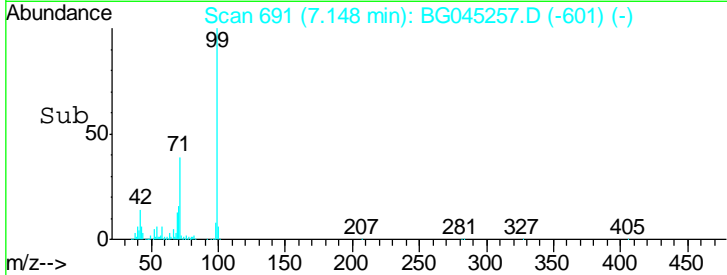
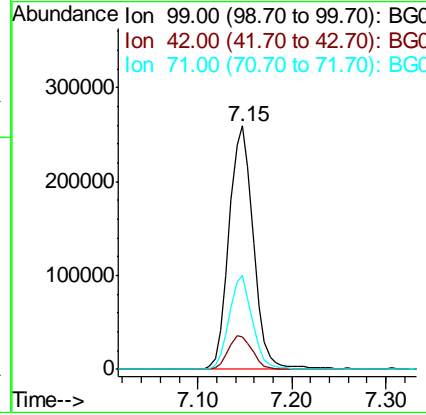
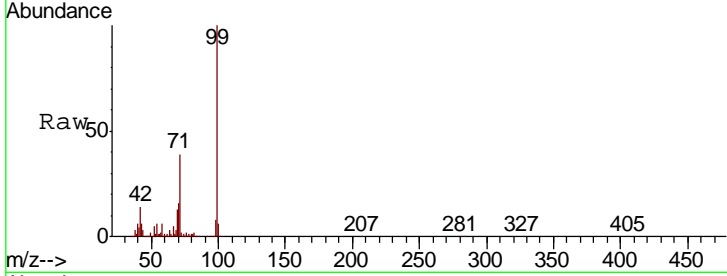




#7
 Phenol-d6
 Concen: 98.289 ng
 RT: 7.15 min Scan# 691
 Delta R.T. -0.00 min
 Lab File: BG045257.D
 Acq: 6 May 2020 17:39

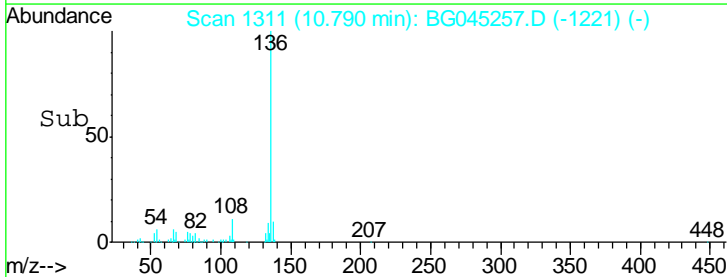
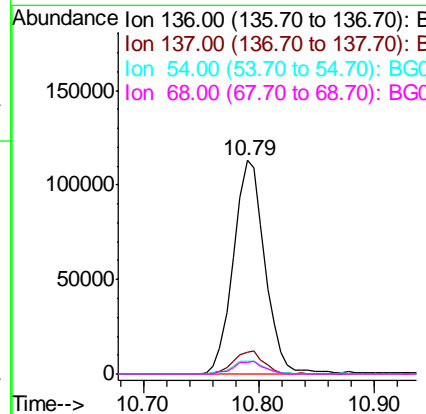
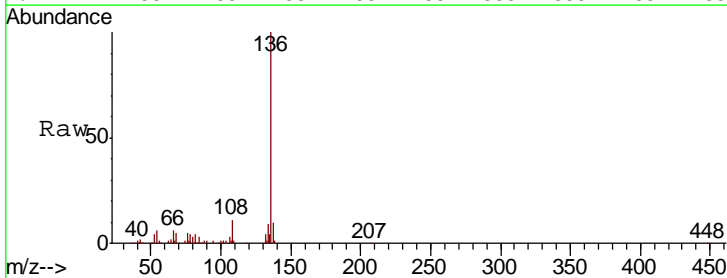
Instrument :
 BNA_G
 ClientSampled :
 6FT-TP-11

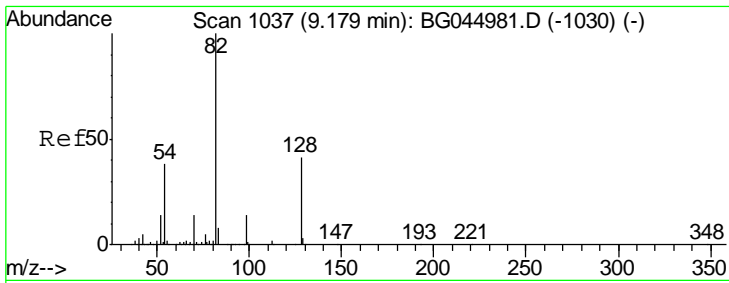
Tgt Ion	Resp	Lower	Upper
99	468035		
42	13.6	11.3	16.9
71	38.6	28.3	42.5



#21
 Naphthalene-d8
 Concen: 20.000 ng
 RT: 10.79 min Scan# 1311
 Delta R.T. -0.00 min
 Lab File: BG045257.D
 Acq: 6 May 2020 17:39

Tgt Ion	Resp	Lower	Upper
136	213759		
137	10.1	8.6	13.0
54	5.8	4.8	7.2
68	5.1	5.2	7.8#

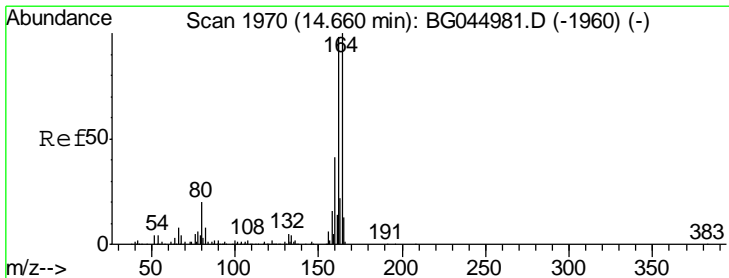
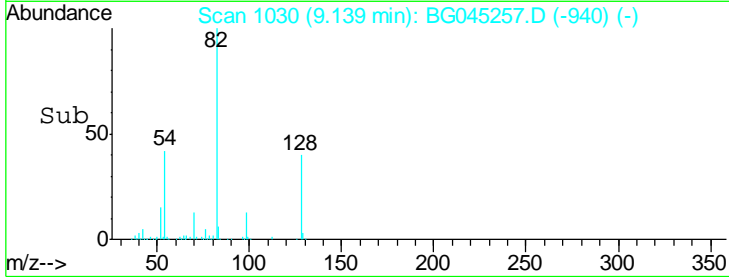
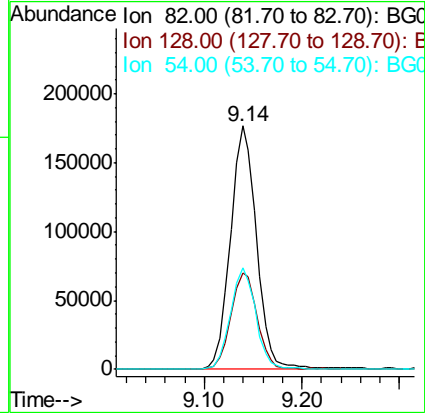
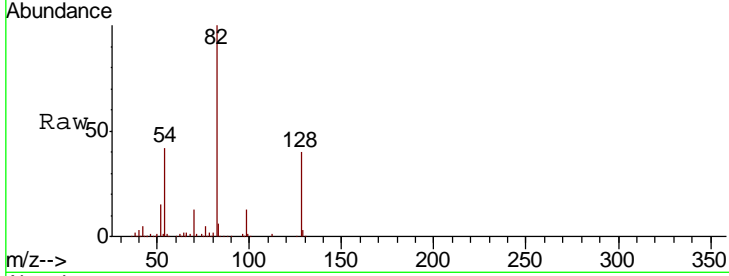




#23
 Nitrobenzene-d5
 Concen: 70.029 ng
 RT: 9.14 min Scan# 1030
 Delta R.T. -0.00 min
 Lab File: BG045257.D
 Acq: 6 May 2020 17:39

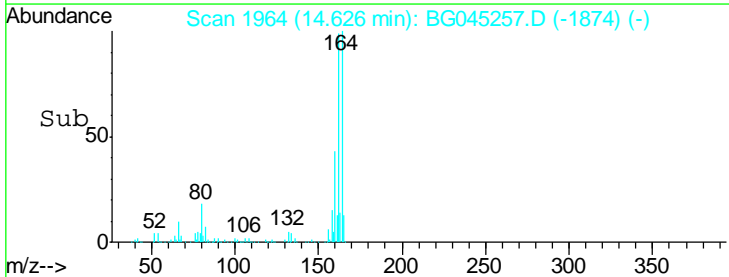
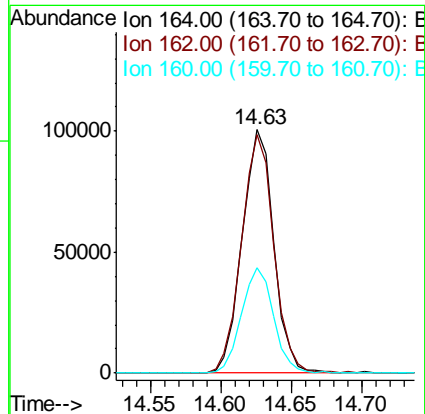
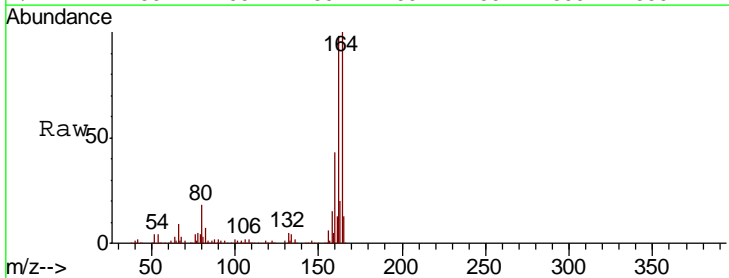
Instrument :
 BNA_G
 ClientSampled :
 6FT-TP-11

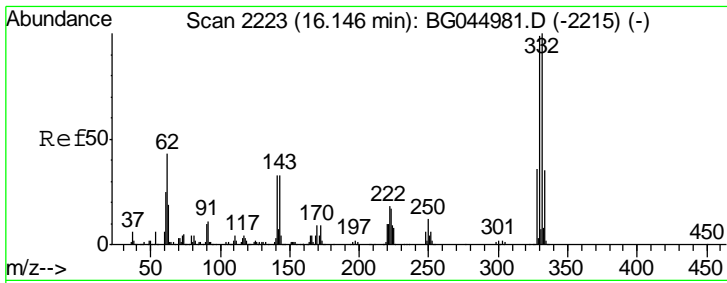
Tgt Ion	Resp	Lower	Upper
82	328067		
128	39.8	33.0	49.4
54	41.6	30.4	45.6



#39
 Acenaphthene-d10
 Concen: 20.000 ng
 RT: 14.63 min Scan# 1964
 Delta R.T. -0.00 min
 Lab File: BG045257.D
 Acq: 6 May 2020 17:39

Tgt Ion	Resp	Lower	Upper
164	157644		
162	98.2	78.7	118.1
160	43.0	32.8	49.2

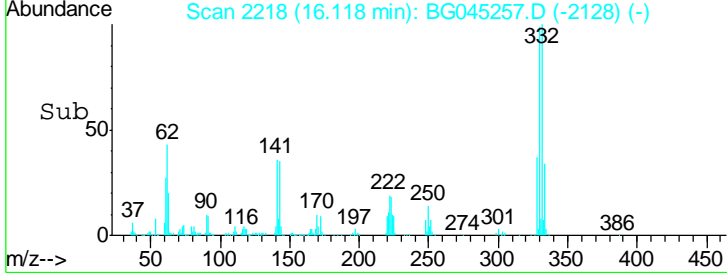
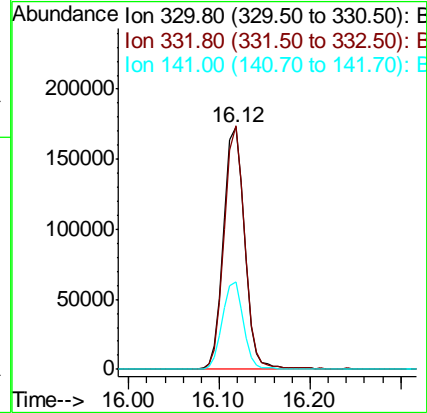
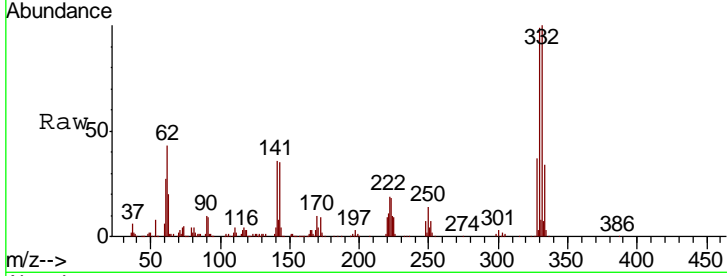




#42
 2,4,6-Tribromophenol
 Concen: 114.884 ng
 RT: 16.12 min Scan# 2218
 Delta R.T. -0.00 min
 Lab File: BG045257.D
 Acq: 6 May 2020 17:39

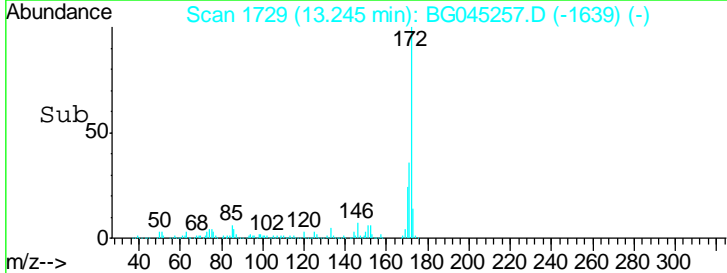
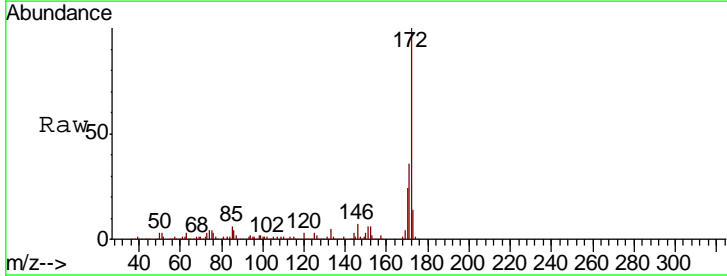
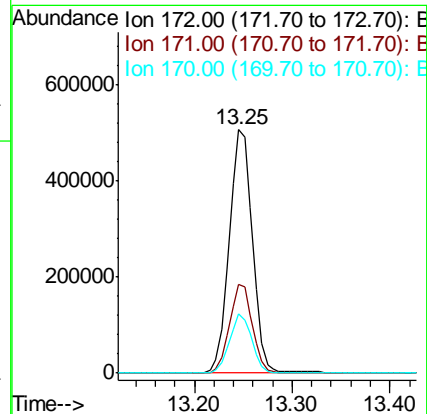
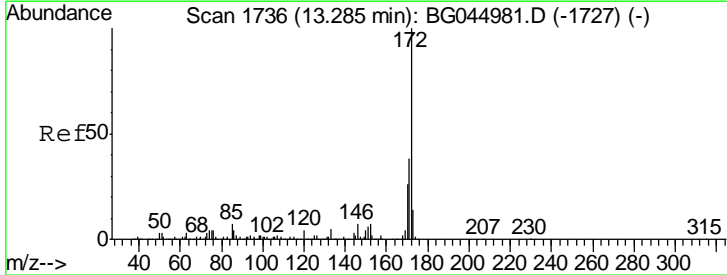
Instrument :
 BNA_G
 ClientSampled :
 6FT-TP-11

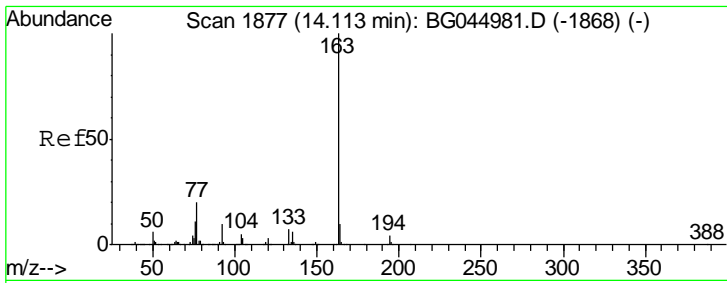
Tgt Ion	Resp	Lower	Upper
330	100		
332	96.7	79.1	118.7
141	35.7	27.1	40.7



#45
 2-Fluorobiphenyl
 Concen: 77.929 ng
 RT: 13.25 min Scan# 1729
 Delta R.T. -0.00 min
 Lab File: BG045257.D
 Acq: 6 May 2020 17:39

Tgt Ion	Resp	Lower	Upper
172	100		
171	36.4	30.6	46.0
170	24.1	20.5	30.7

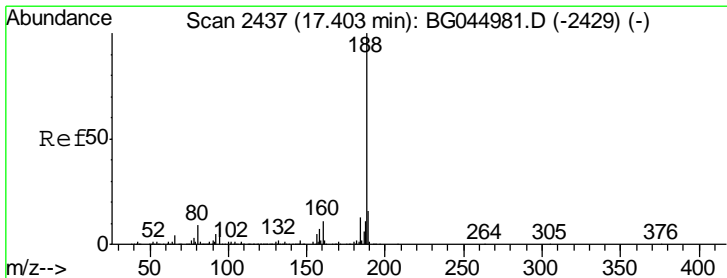
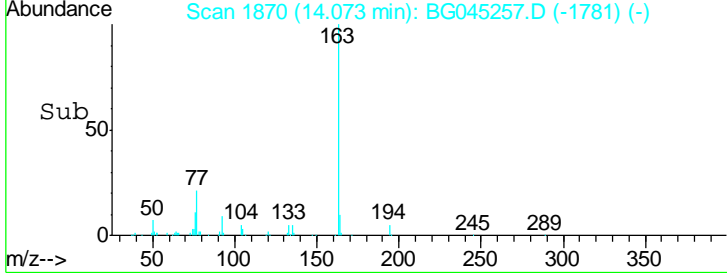
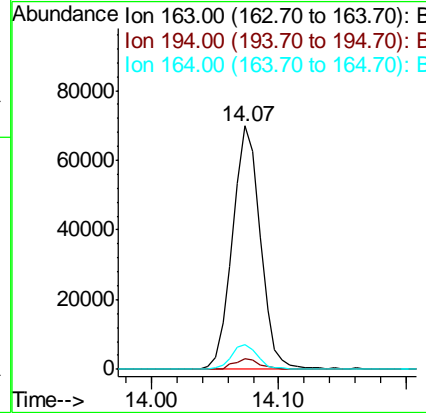
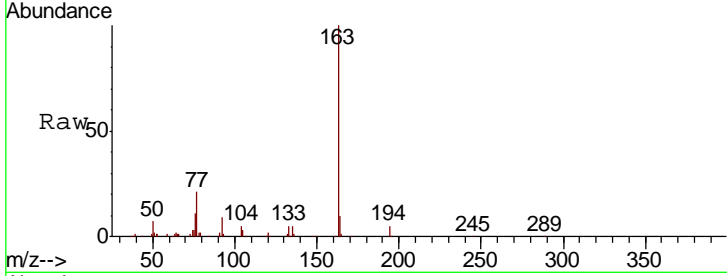




#50
 Dimethylphthalate
 Concen: 8.258 ng
 RT: 14.07 min Scan# 1870
 Delta R.T. -0.01 min
 Lab File: BG045257.D
 Acq: 6 May 2020 17:39

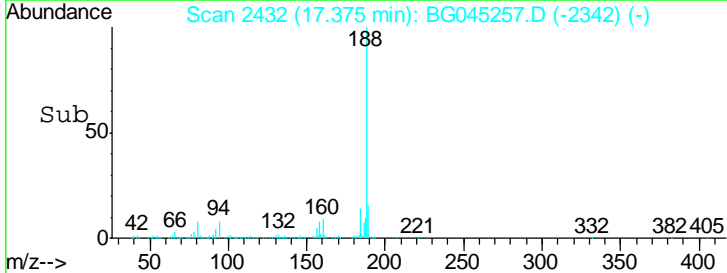
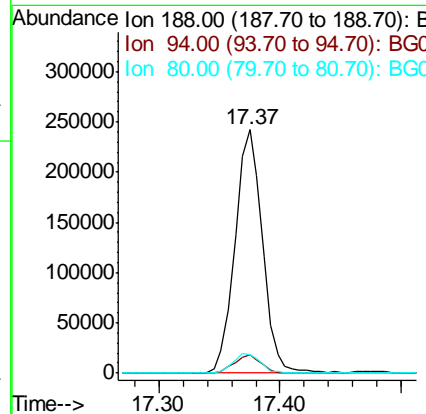
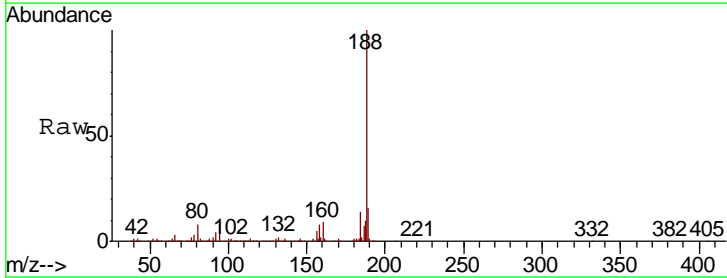
Instrument :
 BNA_G
 ClientSampled :
 6FT-TP-11

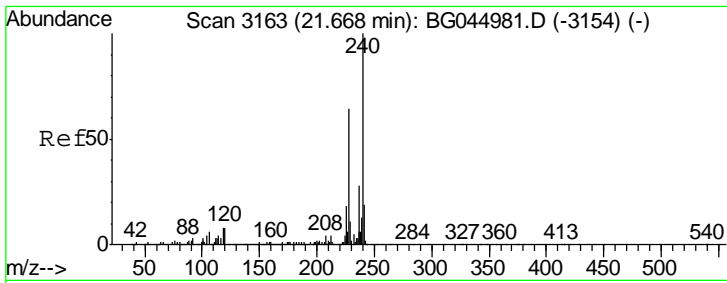
Tgt Ion	Resp	Lower	Upper
163	106006		
194	4.5	3.5	5.3
164	10.1	8.2	12.4



#64
 Phenanthrene-d10
 Concen: 20.000 ng
 RT: 17.37 min Scan# 2432
 Delta R.T. -0.00 min
 Lab File: BG045257.D
 Acq: 6 May 2020 17:39

Tgt Ion	Resp	Lower	Upper
188	384099		
94	7.7	6.2	9.4
80	7.8	7.0	10.6

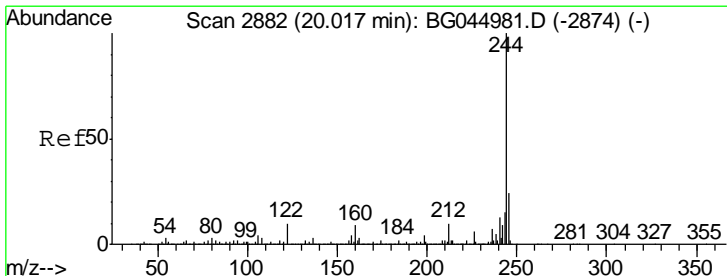
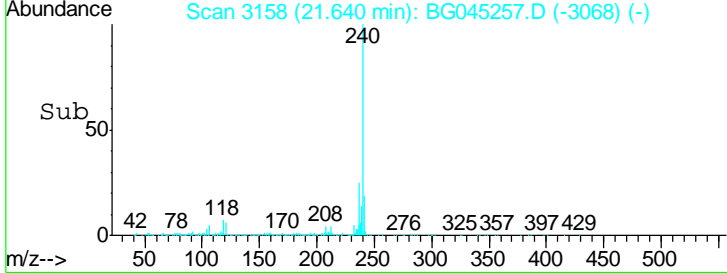
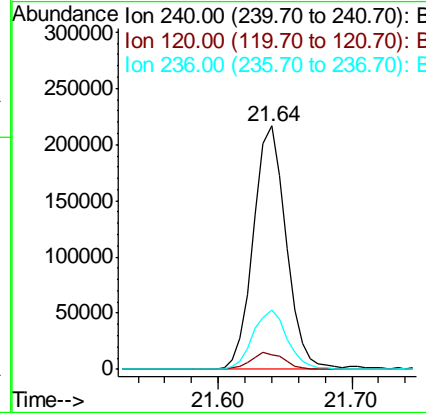
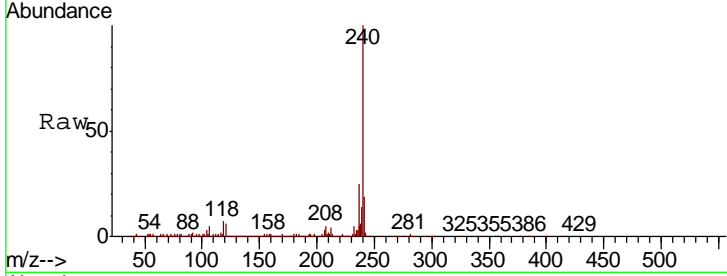




#76
 Chrysene-d12
 Concen: 20.000 ng
 RT: 21.64 min Scan# 3158
 Delta R.T. -0.00 min
 Lab File: BG045257.D
 Acq: 6 May 2020 17:39

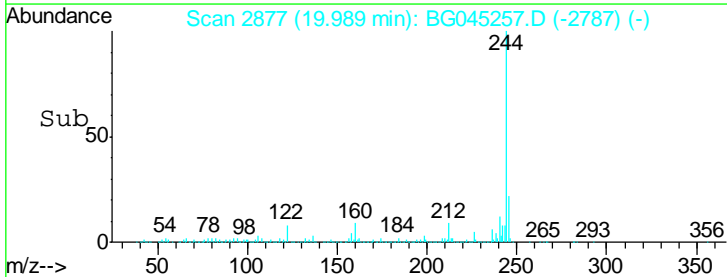
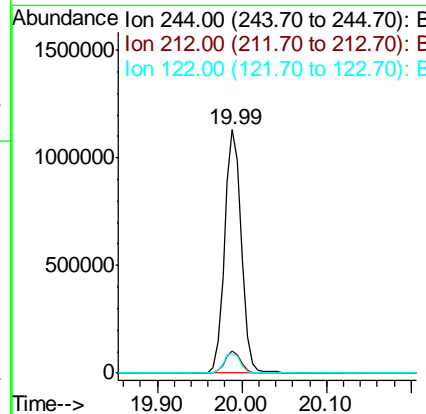
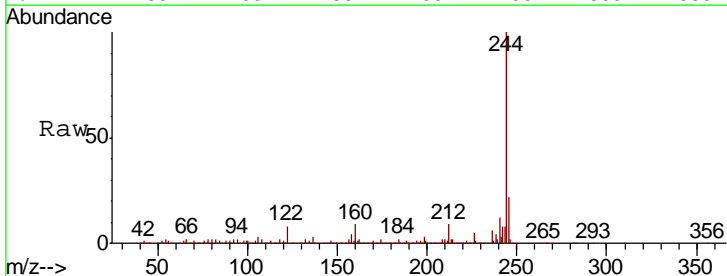
Instrument :
 BNA_G
 ClientSampled :
 6FT-TP-11

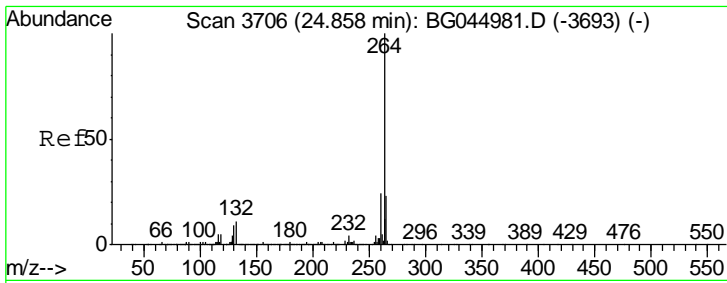
Tgt Ion	Resp	Lower	Upper
240	366262		
120	6.2	6.6	10.0#
236	24.6	22.2	33.2



#79
 Terphenyl-d14
 Concen: 93.309 ng
 RT: 19.99 min Scan# 2877
 Delta R.T. -0.00 min
 Lab File: BG045257.D
 Acq: 6 May 2020 17:39

Tgt Ion	Resp	Lower	Upper
244	1567991		
212	9.1	7.9	11.9
122	8.2	7.7	11.5





#87
 Perylene-d12
 Concen: 20.000 ng
 RT: 24.82 min Scan# 3699
 Delta R.T. 0.00 min
 Lab File: BG045257.D
 Acq: 6 May 2020 17:39

Instrument :
 BNA_G
 ClientSampleId :
 6FT-TP-11

Tot Ion: 264 Resp: 394097

Ion	Ratio	Lower	Upper
264	100		
260	23.7	19.2	28.8
265	22.0	19.0	28.4

