

Data Path : Z:\SVOASRV\HPCHEM1\BNA G\DATA\BG051220\
 Data File : BG045348.D
 Acq On : 13 May 2020 5:03
 Operator : CG/JU
 Sample : L2575-02
 Misc :
 ALS Vial : 20 Sample Multiplier: 1

Instrument :
 BNA_G
 ClientSampleID :
 TP-28

Integration Parameters: rteint.p
 Integrator: RTE
 Smoothing : ON Filtering: 5
 Sampling : 1 Min Area: 3 % of largest Peak
 Start Thrs: 0.2 Max Peaks: 100
 Stop Thrs : 0 Peak Location: TOP

If leading or trailing edge < 100 prefer < Baseline drop else tangent >
 Peak separation: 5

Method : Z:\SVOASRV\HPCHEM1\BNA G\METHODS\8270-BG041520.M
 Title : ASP BNA STANDARDS FOR 5 POINT CALIBRATION

Signal : TIC

peak #	R.T. min	first scan	max scan	last scan	PK TY	peak height	corr. area	corr. % max.	% of total
1	3.132	3	7	19	rVB2	68899	115684	2.09%	0.467%
2	5.540	410	417	427	rBV	1006683	1700103	30.79%	6.859%
3	7.138	678	689	706	rBV	1083465	1939453	35.12%	7.825%
4	7.972	821	831	841	rBV	210493	377387	6.83%	1.523%
5	8.295	878	886	897	rBV	942895	1640845	29.71%	6.620%
6	9.129	1019	1028	1037	rBV	716826	1332288	24.13%	5.375%
7	10.780	1301	1309	1323	rBV	273461	520475	9.42%	2.100%
8	13.236	1720	1727	1739	rBV	2073968	3285826	59.50%	13.257%
9	14.064	1861	1868	1880	rBV	208040	331022	5.99%	1.336%
10	14.616	1954	1962	1973	rBV	472064	764204	13.84%	3.083%
11	16.102	2208	2215	2231	rBV	1756555	2851853	51.64%	11.506%
12	17.359	2423	2429	2442	rBV	623871	999778	18.10%	4.034%
13	19.979	2868	2875	2887	rBV	4076039	5522345	100.00%	22.280%
14	21.278	3090	3096	3108	rBV	181078	306129	5.54%	1.235%
15	21.618	3147	3154	3164	rBV	630668	1110629	20.11%	4.481%
16	21.830	3186	3190	3194	rBV2	53955	83607	1.51%	0.337%
17	22.429	3286	3292	3303	rBV3	89592	191101	3.46%	0.771%
18	23.116	3402	3409	3414	rBV2	94798	187605	3.40%	0.757%
19	23.909	3536	3544	3551	rBV4	92201	210879	3.82%	0.851%
20	24.785	3682	3693	3700	rBV3	372670	1145125	20.74%	4.620%
21	25.942	3883	3890	3891	rBV3	55855	81330	1.47%	0.328%
22	27.281	4113	4118	4127	rVB7	29577	88029	1.59%	0.355%

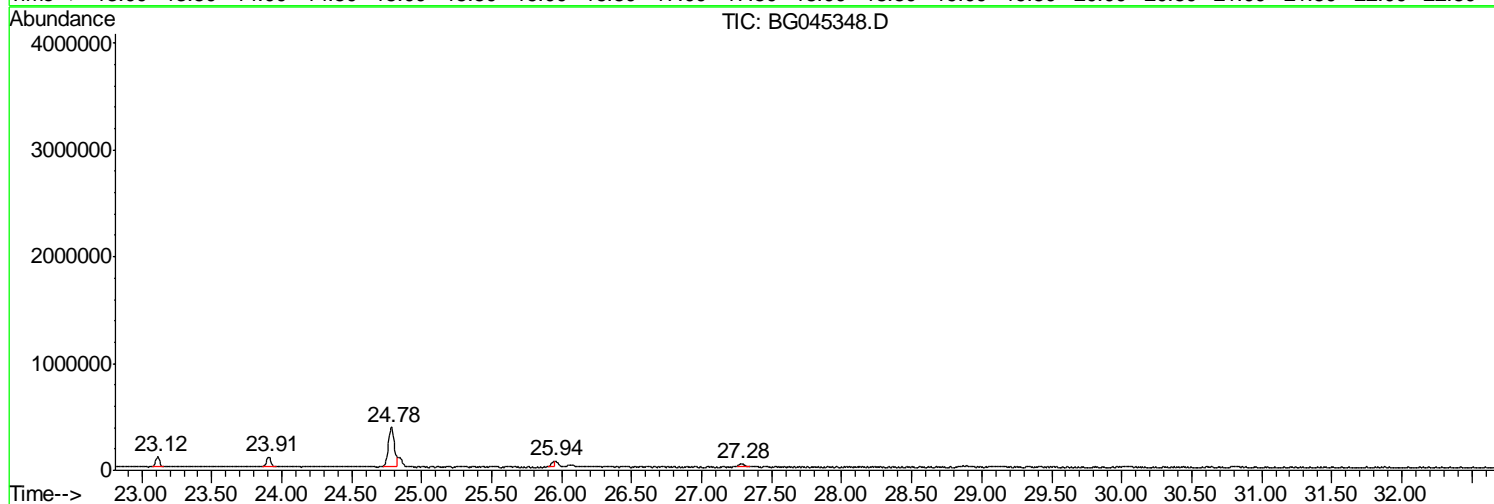
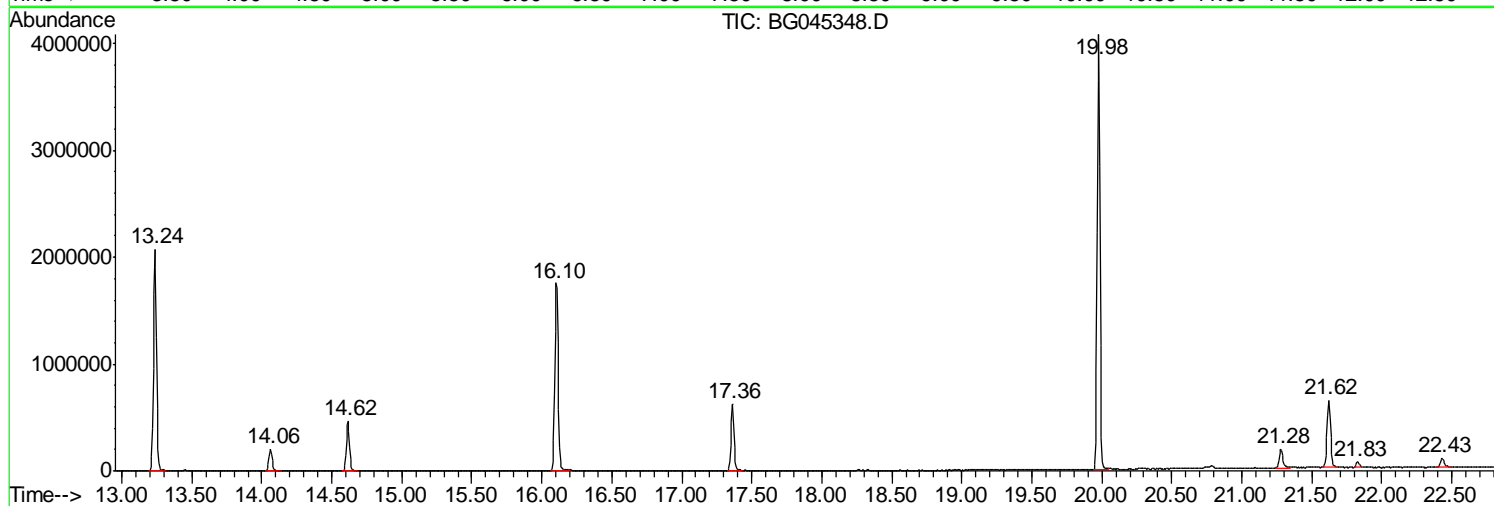
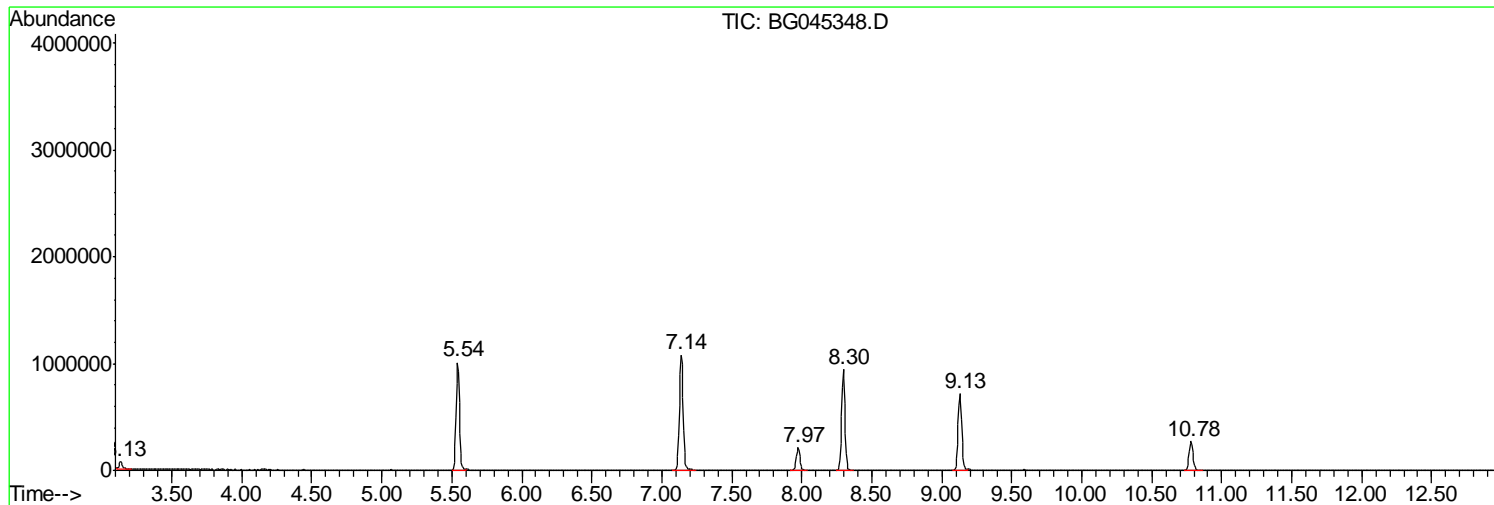
Sum of corrected areas: 24785697

Data Path : Z:\SVOASRV\HPCHEM1\BNA G\DATA\BG051220\
Data File : BG045348.D
Acq On : 13 May 2020 5:03
Operator : CG/JU
Sample : L2575-02
Misc :
ALS Vial : 20 Sample Multiplier: 1

Instrument :
BNA_G
ClientSampleId :
TP-28

Quant Method : Z:\SVOASRV\HPCHEM1\BNA G\METHODS\8270-BG041520.M
Quant Title : ASP BNA STANDARDS FOR 5 POINT CALIBRATION

TIC Library : C:\Database\NIST11.L
TIC Integration Parameters: LSCINT.P



Data Path : Z:\SVOASRV\HPCHEM1\BNA G\DATA\BG051220\
 Data File : BG045348.D
 Acq On : 13 May 2020 5:03
 Operator : CG/JU
 Sample : L2575-02
 Misc :
 ALS Vial : 20 Sample Multiplier: 1

Instrument :
 BNA_G
 ClientSampleID :
 TP-28

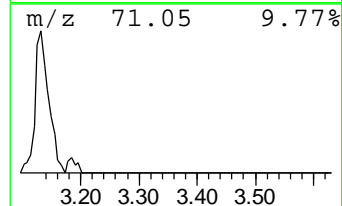
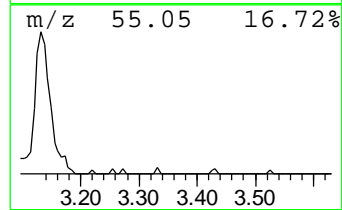
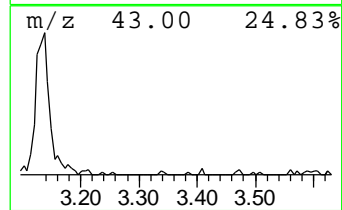
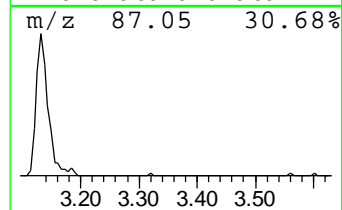
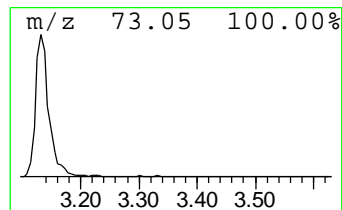
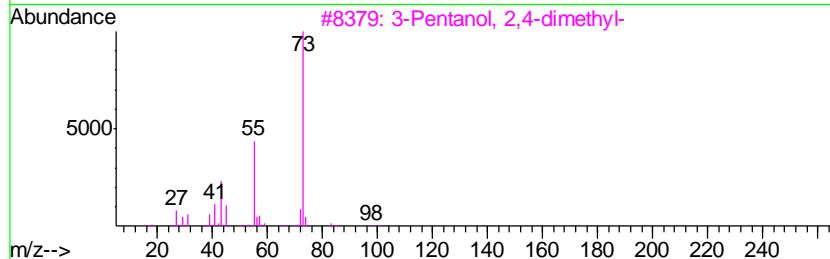
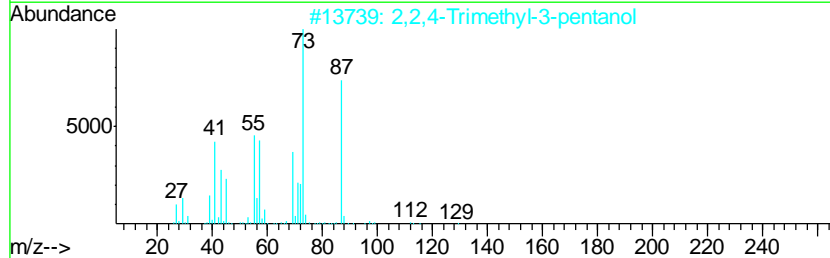
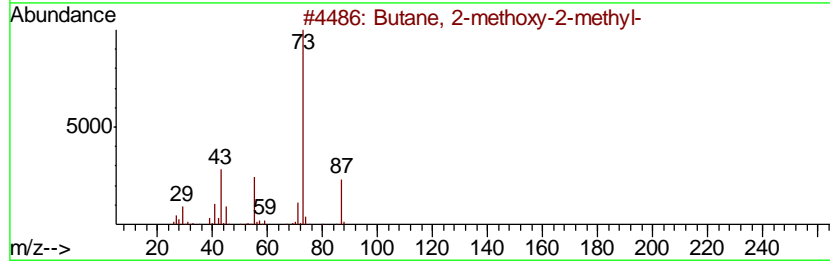
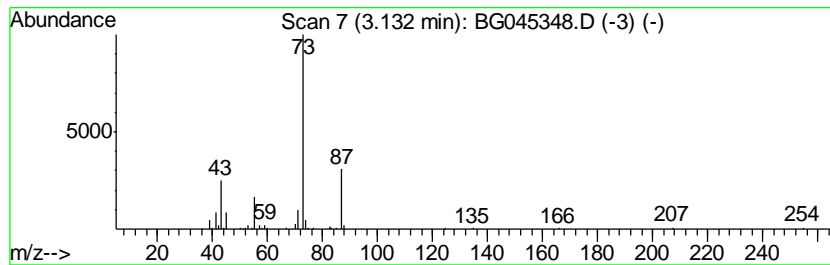
Quant Method : Z:\SVOASRV\HPCHEM1\BNA G\METHODS\8270-BG041520.M
 Quant Title : ASP BNA STANDARDS FOR 5 POINT CALIBRATION

TIC Library : C:\Database\NIST11.L
 TIC Integration Parameters: LSCINT.P

 Peak Number 1 Butane, 2-methoxy-2-methyl- Concentration Rank 2

R.T.	EstConc	Area	Relative to ISTD	R.T.
3.13	6.13 ng	115684	1,4-Dichlorobenzene-d4	7.97

Hit#	of	Tentative ID	MW	MolForm	CAS#	Qual
1	5	Butane, 2-methoxy-2-methyl-	102	C6H14O	000994-05-8	78
2		2,2,4-Trimethyl-3-pentanol	130	C8H18O	005162-48-1	56
3		3-Pentanol, 2,4-dimethyl-	116	C7H16O	000600-36-2	17
4		Butane, 2-methoxy-2,3,3-trimethyl-	130	C8H18O	027705-21-1	12
5		Acetamide, N-ethyl-	87	C4H9NO	000625-50-3	9



Data Path : Z:\SVOASRV\HPCHEM1\BNA G\DATA\BG051220\
 Data File : BG045348.D
 Acq On : 13 May 2020 5:03
 Operator : CG/JU
 Sample : L2575-02
 Misc :
 ALS Vial : 20 Sample Multiplier: 1

Instrument :
 BNA_G
 ClientSampleId :
 TP-28

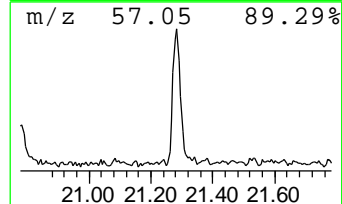
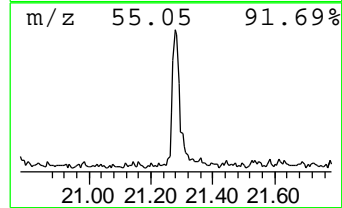
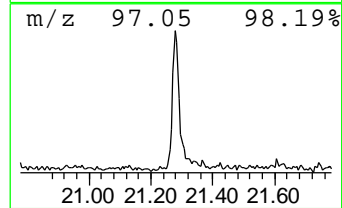
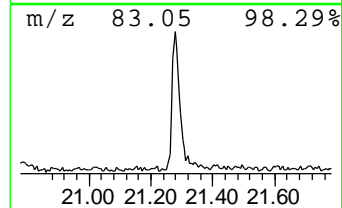
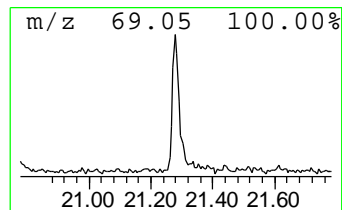
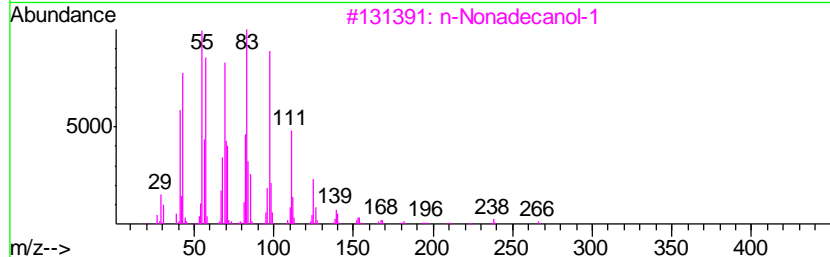
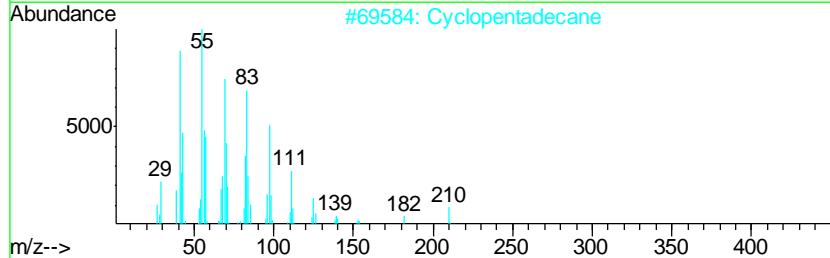
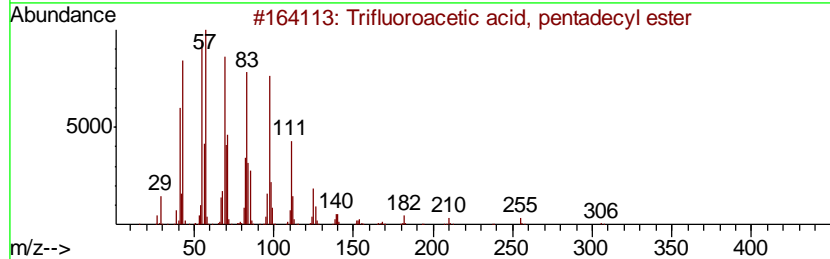
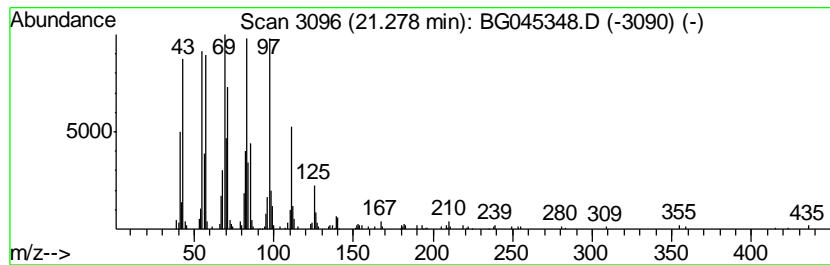
Quant Method : Z:\SVOASRV\HPCHEM1\BNA G\METHODS\8270-BG041520.M
 Quant Title : ASP BNA STANDARDS FOR 5 POINT CALIBRATION

TIC Library : C:\Database\NIST11.L
 TIC Integration Parameters: LSCINT.P

 Peak Number 3 Trifluoroacetic acid, penta... Concentration Rank 3

R.T.	EstConc	Area	Relative to ISTD	R.T.
21.28	5.51 ng	306129	Chrysene-d12	21.62

Hit#	of	Tentative ID	MW	MolForm	CAS#	Qual
1	5	Trifluoroacetic acid, pentadecyl...	324	C17H31F3O2	959010-23-2	94
2		Cyclopentadecane	210	C15H30	000295-48-7	93
3		n-Nonadecanol-1	284	C19H40O	001454-84-8	93
4		17-Pentatriacontene	491	C35H70	006971-40-0	91
5		Heptadecyl heptafluorobutyrate	452	C21H35F7O2	959085-66-6	90



Data Path : Z:\SVOASRV\HPCHEM1\BNA G\DATA\BG051220\
 Data File : BG045348.D
 Acq On : 13 May 2020 5:03
 Operator : CG/JU
 Sample : L2575-02
 Misc :
 ALS Vial : 20 Sample Multiplier: 1

Instrument :
 BNA_G
 ClientSampleID :
 TP-28

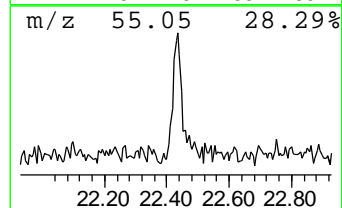
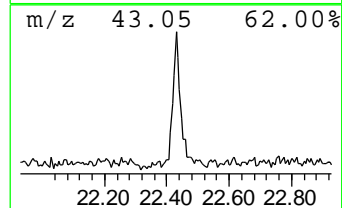
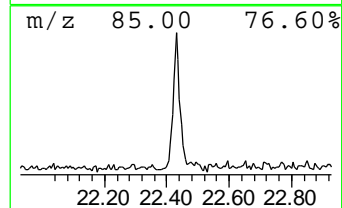
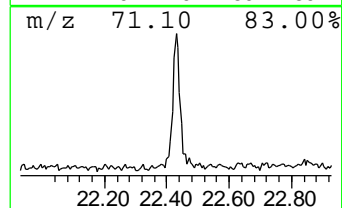
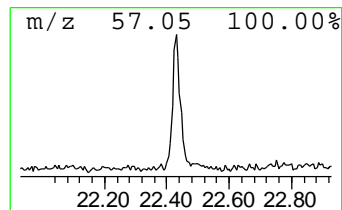
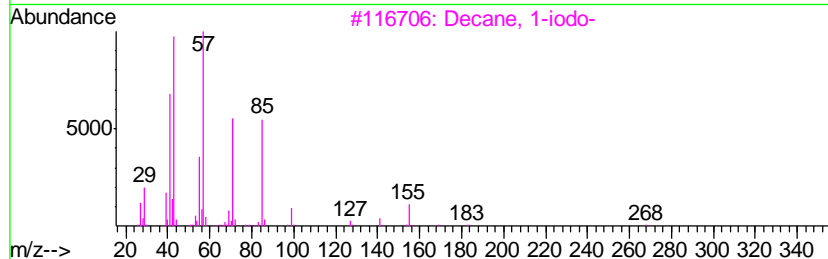
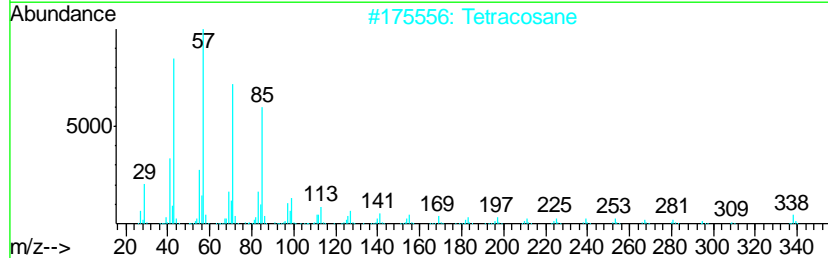
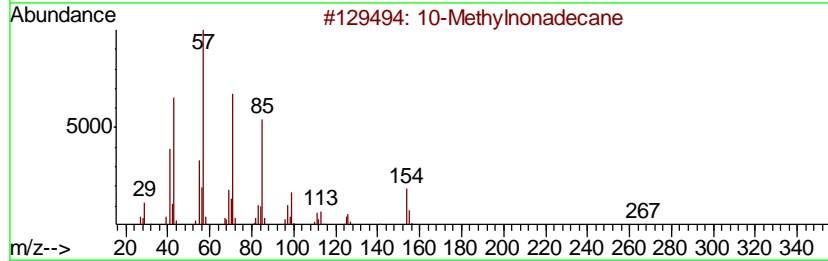
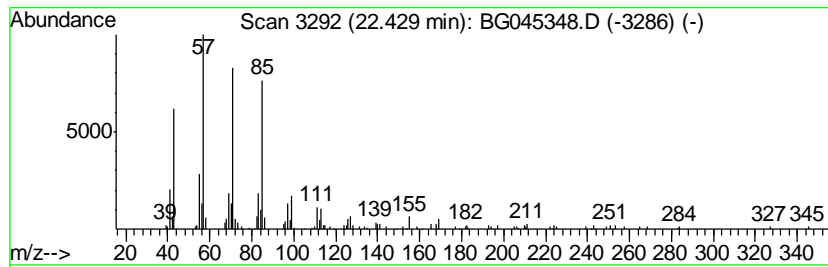
Quant Method : Z:\SVOASRV\HPCHEM1\BNA G\METHODS\8270-BG041520.M
 Quant Title : ASP BNA STANDARDS FOR 5 POINT CALIBRATION

TIC Library : C:\Database\NIST11.L
 TIC Integration Parameters: LSCINT.P

 Peak Number 4 10-Methylnonadecane Concentration Rank 5

R.T.	EstConc	Area	Relative to ISTD	R.T.
22.43	3.44 ng	191101	Chrysene-d12	21.62

Hit#	of	Tentative ID	MW	MolForm	CAS#	Qual
1	5	10-Methylnonadecane	282	C20H42	056862-62-5	90
2		Tetracosane	338	C24H50	000646-31-1	86
3		Decane, 1-iodo-	268	C10H21I	002050-77-3	72
4		Docosane, 11-decyl-	451	C32H66	055401-55-3	72
5		Sulfurous acid, butyl decyl ester	278	C14H30O3S	1000309-17-7	72



Data Path : Z:\SVOASRV\HPCHEM1\BNA G\DATA\BG051220\
 Data File : BG045348.D
 Acq On : 13 May 2020 5:03
 Operator : CG/JU
 Sample : L2575-02
 Misc :
 ALS Vial : 20 Sample Multiplier: 1

Instrument :
 BNA_G
 ClientSampleID :
 TP-28

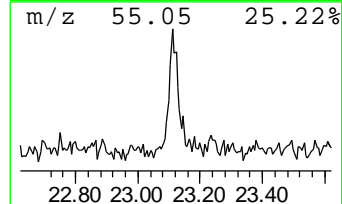
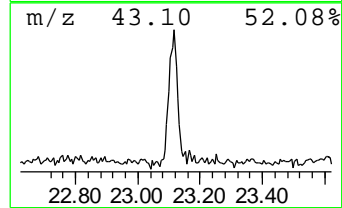
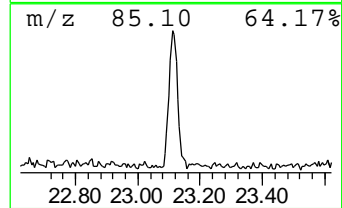
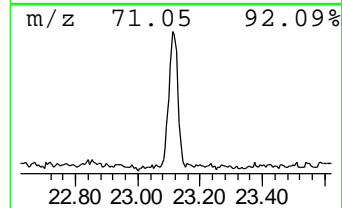
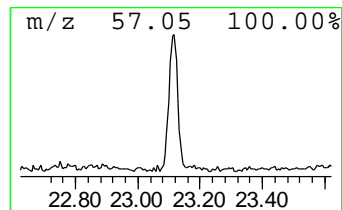
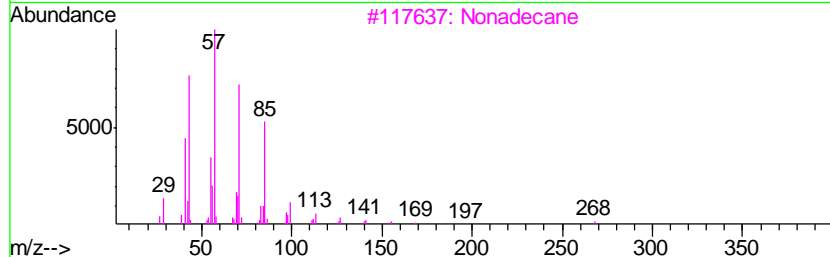
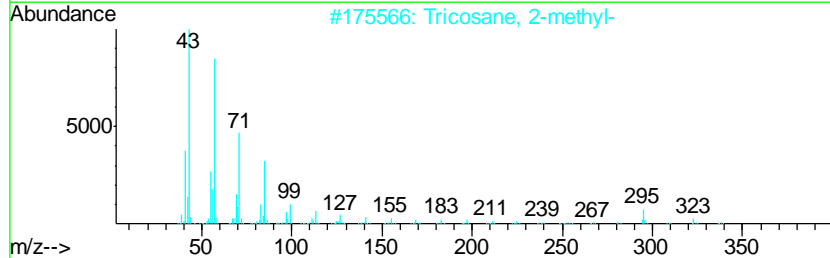
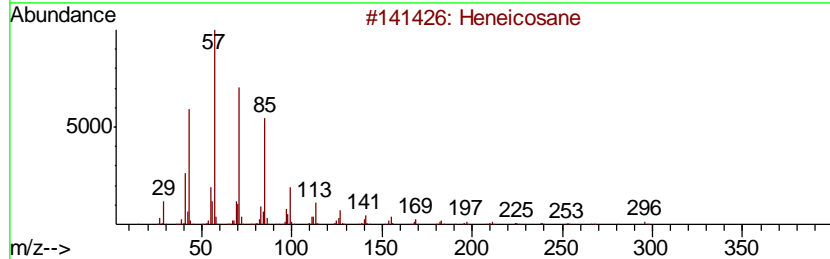
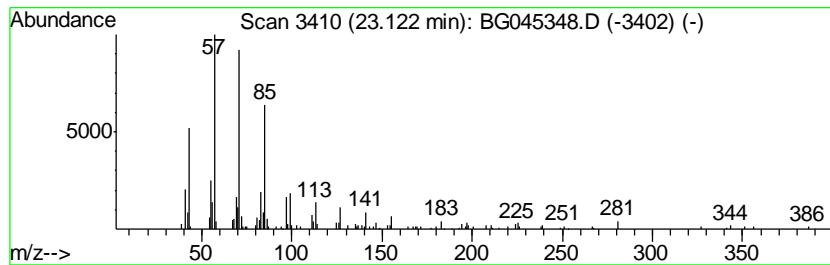
Quant Method : Z:\SVOASRV\HPCHEM1\BNA G\METHODS\8270-BG041520.M
 Quant Title : ASP BNA STANDARDS FOR 5 POINT CALIBRATION

TIC Library : C:\Database\NIST11.L
 TIC Integration Parameters: LSCINT.P

 Peak Number 5 Heneicosane Concentration Rank 6

R.T.	EstConc	Area	Relative to ISTD	R.T.
23.12	3.38 ng	187605	Chrysene-d12	21.62

Hit#	of	Tentative ID	MW	MolForm	CAS#	Qual
1	5	Heneicosane	296	C21H44	000629-94-7	91
2		Tricosane, 2-methyl-	338	C24H50	001928-30-9	91
3		Nonadecane	268	C19H40	000629-92-5	91
4		Tetracosane	338	C24H50	000646-31-1	91
5		triacontane	422	C30H62	000638-68-6	91



Data Path : Z:\SVOASRV\HPCHEM1\BNA G\DATA\BG051220\
 Data File : BG045348.D
 Acq On : 13 May 2020 5:03
 Operator : CG/JU
 Sample : L2575-02
 Misc :
 ALS Vial : 20 Sample Multiplier: 1

Instrument :
 BNA_G
 ClientSampleID :
 TP-28

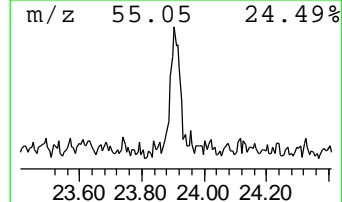
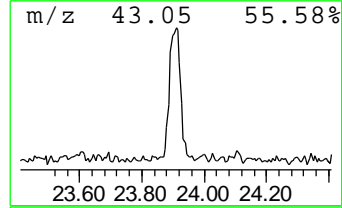
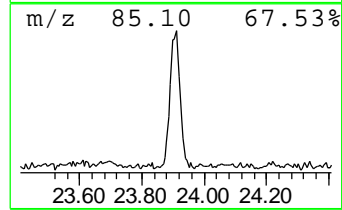
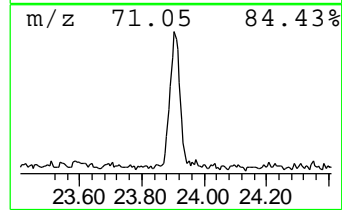
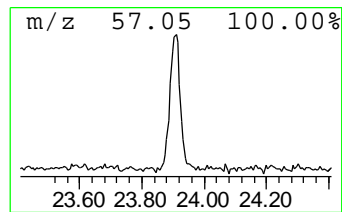
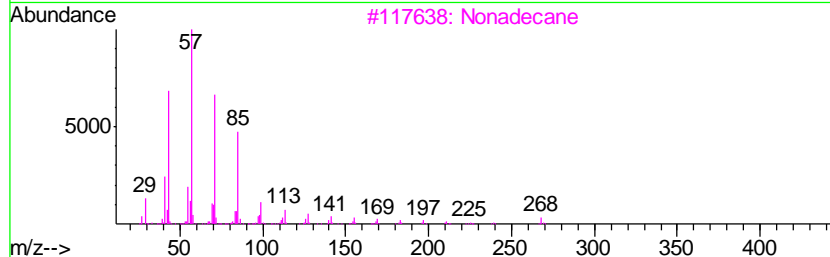
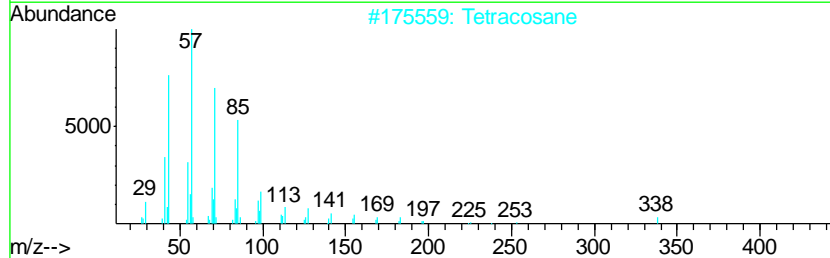
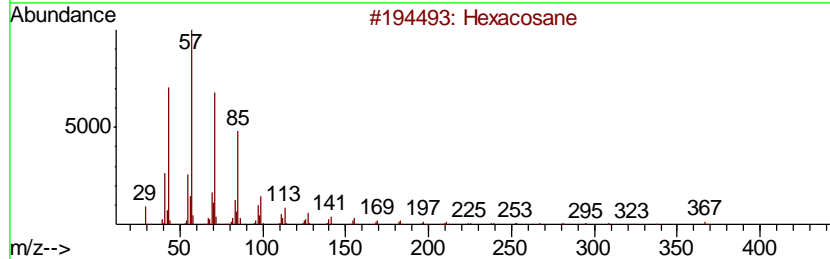
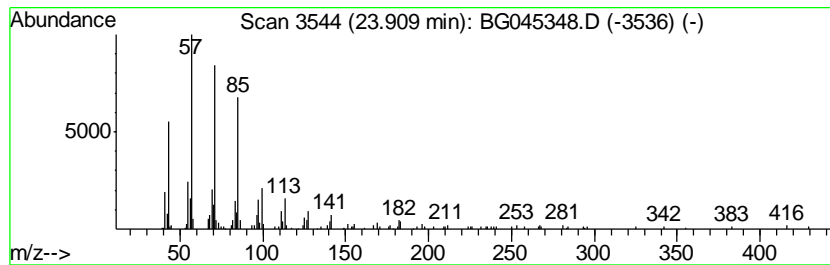
Quant Method : Z:\SVOASRV\HPCHEM1\BNA G\METHODS\8270-BG041520.M
 Quant Title : ASP BNA STANDARDS FOR 5 POINT CALIBRATION

TIC Library : C:\Database\NIST11.L
 TIC Integration Parameters: LSCINT.P

 Peak Number 6 Hexacosane Concentration Rank 4

R.T.	EstConc	Area	Relative to ISTD	R.T.
23.91	3.68 ng	210879	Perylene-d12	24.78

Hit#	of	Tentative ID	MW	MolForm	CAS#	Qual
1	5	Hexacosane	366	C26H54	000630-01-3	91
2		Tetracosane	338	C24H50	000646-31-1	91
3		Nonadecane	268	C19H40	000629-92-5	90
4		Eicosane	282	C20H42	000112-95-8	90
5		Heneicosane	296	C21H44	000629-94-7	90



Data Path : Z:\SVOASRV\HPCHEM1\BNA_G\DATA\BG051220\
Data File : BG045348.D
Acq On : 13 May 2020 5:03
Operator : CG/JU
Sample : L2575-02
Misc :
ALS Vial : 20 Sample Multiplier: 1

Instrument :
BNA_G
ClientSampleId :
TP-28

Quant Method : Z:\SVOASRV\HPCHEM1\BNA_G\METHODS\8270-BG041520.M
Quant Title : ASP BNA STANDARDS FOR 5 POINT CALIBRATION

TIC Library : C:\Database\NIST11.L
TIC Integration Parameters: LSCINT.P

TIC Top Hit name	RT	EstConc	Units	Response	--Internal Standard--			
					#	RT	Resp	Conc
Butane, 2-methoxy...	3.13	6.1 ng		115684	1	7.97	377387	20.0
Trifluoroacetic a...	21.28	5.5 ng		306129	5	21.62	1110630	20.0
10-Methylnonadecane	22.43	3.4 ng		191101	5	21.62	1110630	20.0
Heneicosane	23.12	3.4 ng		187605	5	21.62	1110630	20.0
Hexacosane	23.91	3.7 ng		210879	6	24.78	1145130	20.0