

Data Path : Z:\svoasrv\HPCHEM1\BNA_G\Data\BG051724\
 Data File : BG061246.D
 Acq On : 17 May 2024 19:58
 Operator : MA/JU
 Sample : P2497-07 10X
 Misc :
 ALS Vial : 16 Sample Multiplier: 1

Instrument :
 BNA_G
 ClientSampleId :
 280646

Integration Parameters: rteint.p
 Integrator: RTE
 Smoothing : ON Filtering: 5
 Sampling : 1 Min Area: 3 % of largest Peak
 Start Thrs: 0.2 Max Peaks: 100
 Stop Thrs : 0 Peak Location: TOP

If leading or trailing edge < 100 prefer < Baseline drop else tangent >
 Peak separation: 5

Method : Z:\svoasrv\HPCHEM1\BNA_G\Methods\8270-BG043024.M
 Title : ASP BNA STANDARDS FOR 5 POINT CALIBRATION

Signal : TIC: BG061246.D\data.ms

peak #	R.T. min	first scan	max scan	last scan	PK TY	peak height	corr. area	corr. % max.	% of total
1	3.158	24	29	42	rVB2	27061	56532	12.48%	2.129%
2	5.532	427	433	443	rVB	32425	55372	12.22%	2.085%
3	7.112	697	702	711	rBV2	35103	60106	13.27%	2.263%
4	7.929	835	841	849	rVB	119336	204471	45.13%	7.699%
5	9.087	1031	1038	1045	rVB2	22558	40246	8.88%	1.515%
6	10.726	1309	1317	1326	rBV	151535	259276	57.23%	9.762%
7	13.182	1728	1735	1742	rBV	55840	87170	19.24%	3.282%
8	14.563	1963	1970	1978	rBV	219547	350491	77.37%	13.196%
9	14.756	1997	2003	2005	rBV4	5969	9203	2.03%	0.347%
10	16.055	2219	2224	2231	rBV2	35283	55234	12.19%	2.080%
11	17.306	2428	2437	2449	rBV	271585	421634	93.07%	15.875%
12	18.711	2673	2676	2682	rBV8	3211	6121	1.35%	0.230%
13	18.781	2682	2688	2691	rVB5	2854	5065	1.12%	0.191%
14	19.181	2752	2756	2758	rBV5	2710	4969	1.10%	0.187%
15	19.386	2788	2791	2792	rBV3	5163	5489	1.21%	0.207%
16	19.804	2859	2862	2863	rBV3	8660	7868	1.74%	0.296%
17	19.927	2878	2883	2888	rBV	107276	146909	32.43%	5.531%
18	21.566	3157	3162	3171	rVB2	270190	453027	100.00%	17.057%
19	24.698	3689	3695	3707	rVB2	145080	426768	94.20%	16.068%

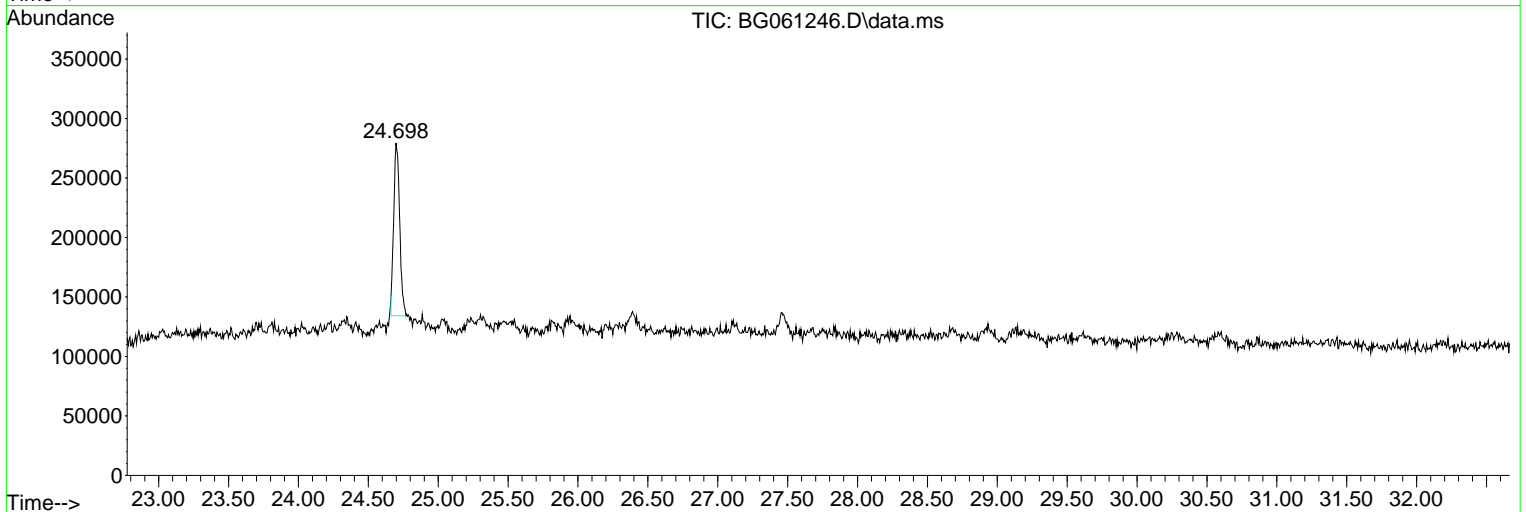
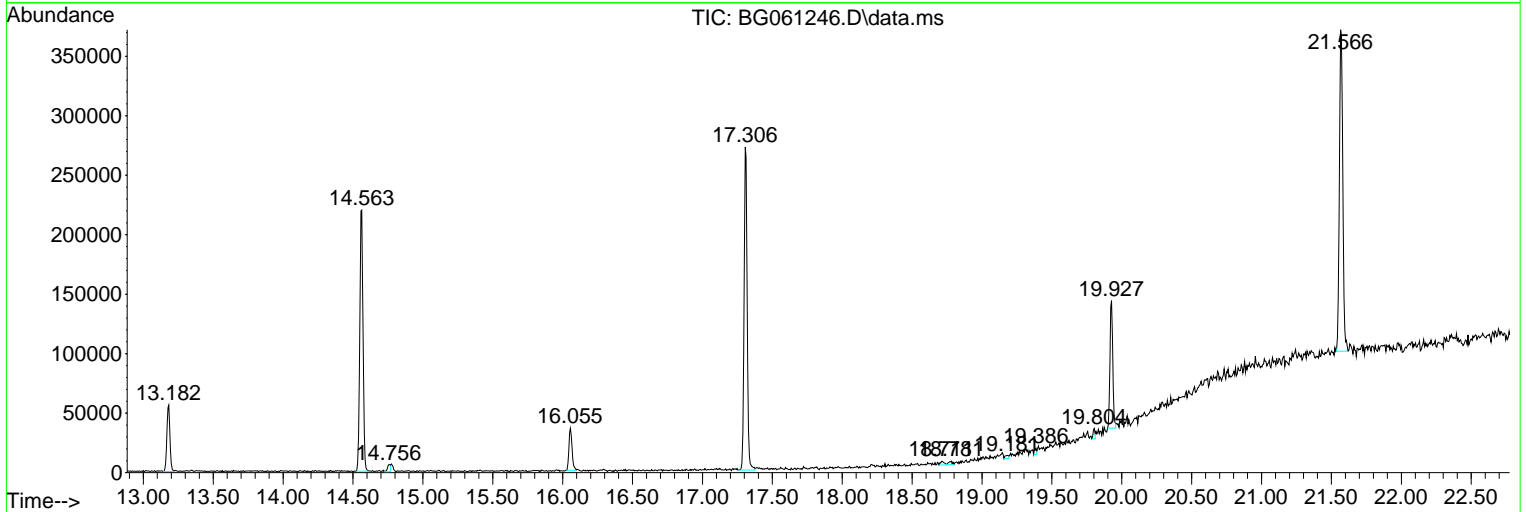
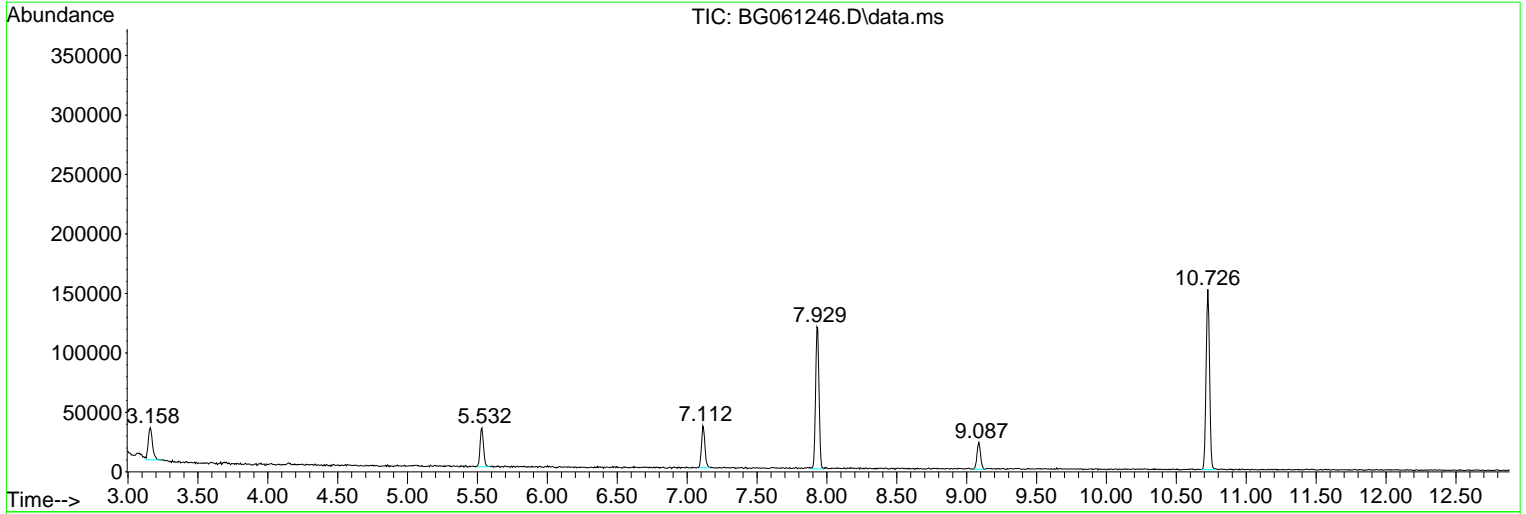
Sum of corrected areas: 2655951

Data Path : Z:\svoasrv\HPCHEM1\BNA_G\Data\BG051724\
 Data File : BG061246.D
 Acq On : 17 May 2024 19:58
 Operator : MA/JU
 Sample : P2497-07 10X
 Misc :
 ALS Vial : 16 Sample Multiplier: 1

Instrument :
 BNA_G
 ClientSampleId :
 280646

Quant Method : Z:\svoasrv\HPCHEM1\BNA_G\Methods\8270-BG043024.M
 Quant Title : ASP BNA STANDARDS FOR 5 POINT CALIBRATION

TIC Library : C:\Database\NIST20.L
 TIC Integration Parameters: LSCINT.P



Data Path : Z:\svoasrv\HPCHEM1\BNA_G\Data\BG051724\
 Data File : BG061246.D
 Acq On : 17 May 2024 19:58
 Operator : MA/JU
 Sample : P2497-07 10X
 Misc :
 ALS Vial : 16 Sample Multiplier: 1

Instrument :
 BNA_G
 ClientSampleId :
 280646

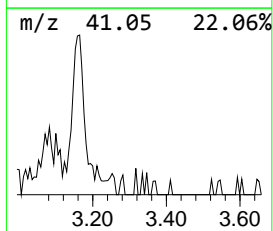
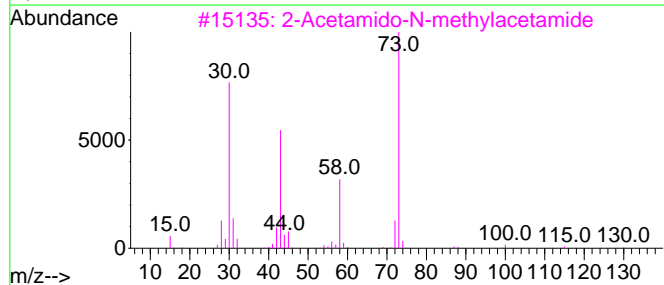
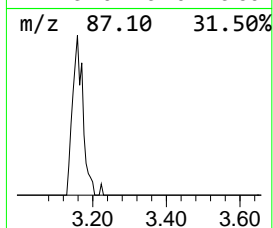
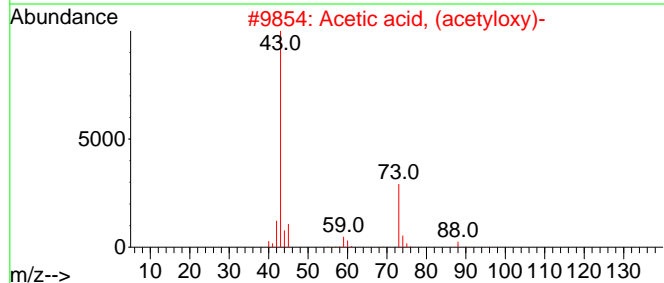
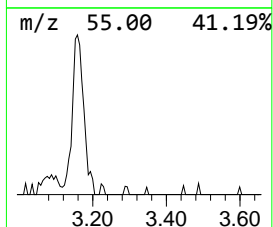
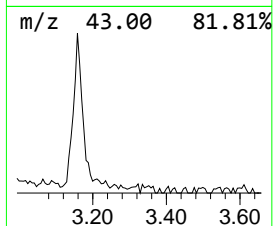
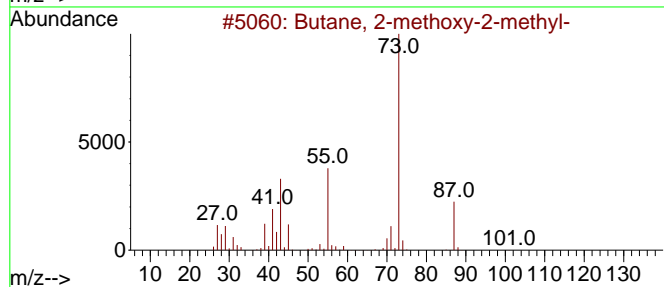
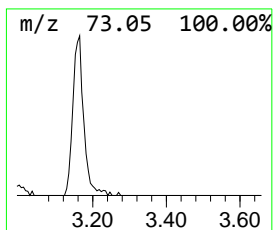
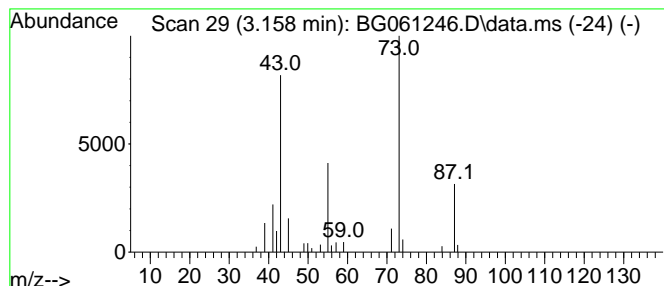
Quant Method : Z:\svoasrv\HPCHEM1\BNA_G\Methods\8270-BG043024.M
 Quant Title : ASP BNA STANDARDS FOR 5 POINT CALIBRATION

TIC Library : C:\Database\NIST20.L
 TIC Integration Parameters: LSCINT.P

 Peak Number 1 unknown3.158 Concentration Rank 1

R.T.	EstConc	Area	Relative to ISTD	R.T.
3.158	5.53 ng	56532	1,4-Dichlorobenzene-d4	7.935

Hit#	of 5	Tentative ID	MW	MolForm	CAS#	Qual
1		Butane, 2-methoxy-2-methyl-	102	C6H14O	000994-05-8	45
2		Acetic acid, (acetyloxy)-	118	C4H6O4	013831-30-6	28
3		2-Acetamido-N-methylacetamide	130	C5H10N2O2	007606-79-3	25
4		3-Pentanol, 3-methyl-	102	C6H14O	000077-74-7	16
5		3-Hexanol, 2,4-dimethyl-	130	C8H18O	013432-25-2	12



Data Path : Z:\svoasrv\HPCHEM1\BNA_G\Data\BG051724\
Data File : BG061246.D
Acq On : 17 May 2024 19:58
Operator : MA/JU
Sample : P2497-07 10X
Misc :
ALS Vial : 16 Sample Multiplier: 1

Instrument :
BNA_G
ClientSampleId :
280646

Quant Method : Z:\svoasrv\HPCHEM1\BNA_G\Methods\8270-BG043024.M
Quant Title : ASP BNA STANDARDS FOR 5 POINT CALIBRATION

TIC Library : C:\Database\NIST20.L
TIC Integration Parameters: LSCINT.P

TIC Top Hit name	RT	EstConc	Units	Response	--Internal Standard--			
					#	RT	Resp	Conc
unknown3.158	3.158	5.5	ng	56532	1	7.935	204471	20.0