

Data Path : Z:\svoasrv\HPCHEM1\BNA_G\Data\BG060322\
 Data File : BG053815.D
 Acq On : 3 Jun 2022 16:18
 Operator : CG/JU
 Sample : N3170-04
 Misc :
 ALS Vial : 12 Sample Multiplier: 1

Instrument :
 BNA_G
 ClientSampleId :
 20220424-AMENDED-COMPOSITE-D

Quant Time: Jun 04 03:05:50 2022
 Quant Method : Z:\svoasrv\HPCHEM1\BNA_G\Methods\8270-BG060222.M
 Quant Title : ASP BNA STANDARDS FOR 5 POINT CALIBRATION
 QLast Update : Thu Jun 02 23:22:27 2022
 Response via : Initial Calibration

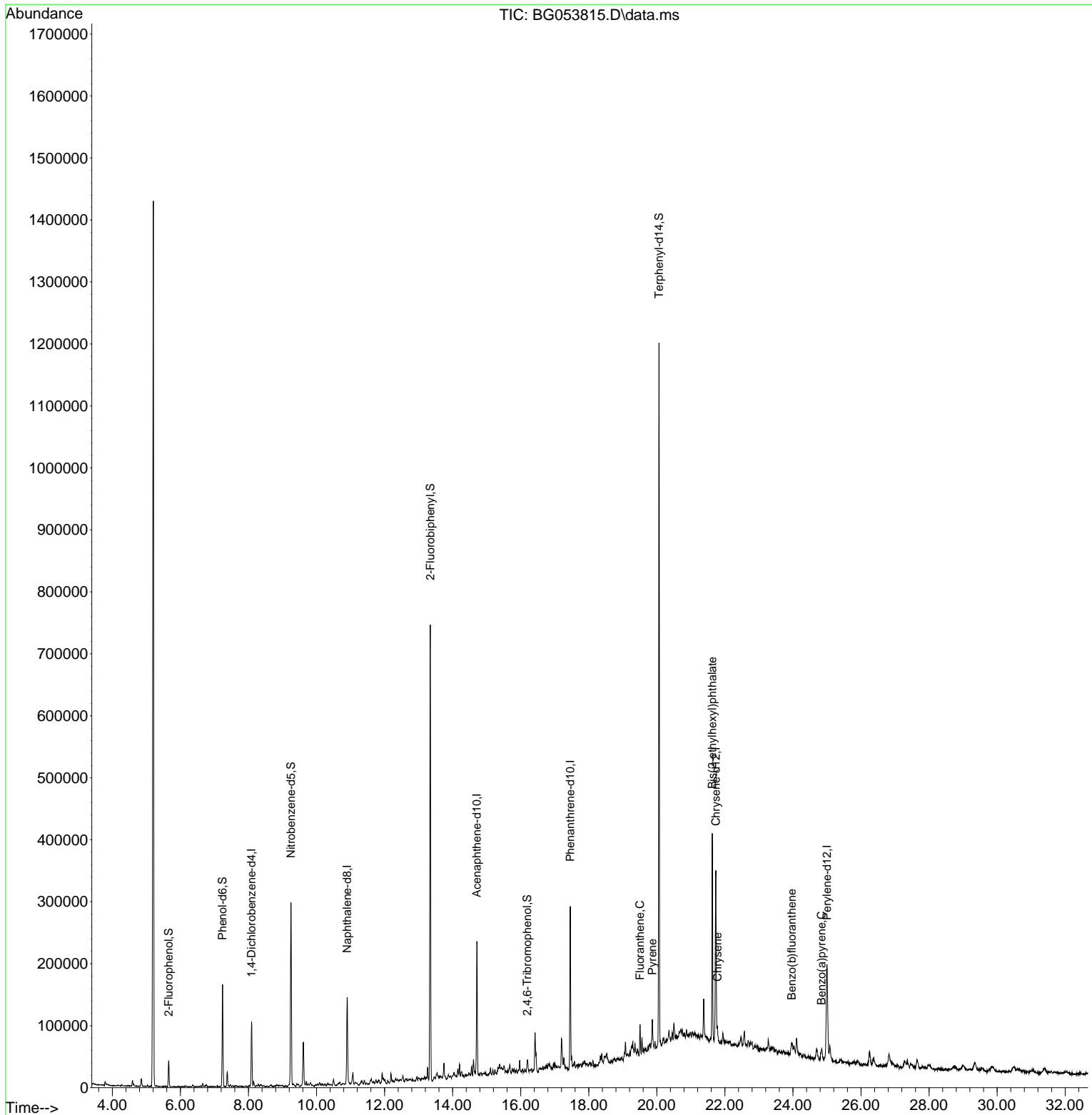
Compound	R.T.	QIon	Response	Conc	Units	Dev(Min)
Internal Standards						
1) 1,4-Dichlorobenzene-d4	8.091	152	30654	20.000	ng	0.00
21) Naphthalene-d8	10.900	136	123870	20.000	ng	0.00
39) Acenaphthene-d10	14.713	164	82367	20.000	ng	0.00
64) Phenanthrene-d10	17.457	188	175282	20.000	ng	0.00
76) Chrysene-d12	21.734	240	178614	20.000	ng	0.00
86) Perylene-d12	25.001	264	183936	20.000	ng	0.00
System Monitoring Compounds						
5) 2-Fluorophenol	5.659	112	19889	11.915	ng	0.00
7) Phenol-d6	7.239	99	95872	42.398	ng	0.00
23) Nitrobenzene-d5	9.249	82	186261	98.744	ng	0.00
42) 2,4,6-Tribromophenol	16.193	330	2426	2.426	ng	0.00
45) 2-Fluorobiphenyl	13.344	172	410962	74.642	ng	0.00
79) Terphenyl-d14	20.065	244	619479	68.998	ng	0.00
Target Compounds						
75) Fluoranthene	19.507	202	27797	2.323	ng	96
78) Pyrene	19.866	202	31722	2.793	ng	99
83) Chrysene	21.781	228	23279	2.080	ng	# 94
84) Bis(2-ethylhexyl)phtha...	21.628	149	146083	27.422	ng	97
88) Benzo(b)fluoranthene	23.967	252	24849	2.176	ng	# 97
90) Benzo(a)pyrene	24.842	252	22729	2.353	ng	# 90

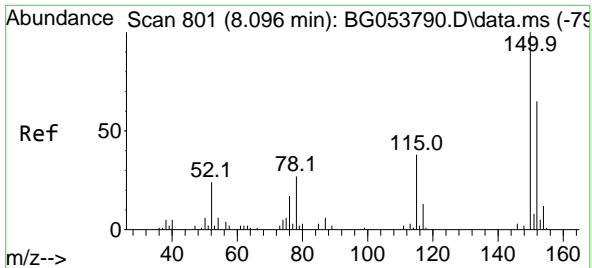
(#) = qualifier out of range (m) = manual integration (+) = signals summed

Data Path : Z:\svoasrv\HPCHEM1\BNA_G\Data\BG060322\
 Data File : BG053815.D
 Acq On : 3 Jun 2022 16:18
 Operator : CG/JU
 Sample : N3170-04
 Misc :
 ALS Vial : 12 Sample Multiplier: 1

Instrument :
 BNA_G
 ClientSampleId :
 20220424-AMENDED-COMPOSITE-D

Quant Time: Jun 04 03:05:50 2022
 Quant Method : Z:\svoasrv\HPCHEM1\BNA_G\Methods\8270-BG060222.M
 Quant Title : ASP BNA STANDARDS FOR 5 POINT CALIBRATION
 QLast Update : Thu Jun 02 23:22:27 2022
 Response via : Initial Calibration

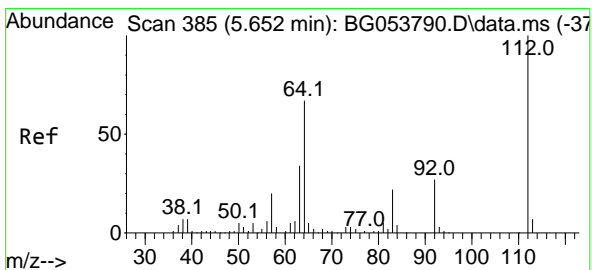
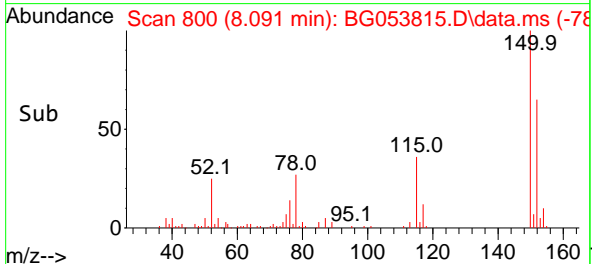
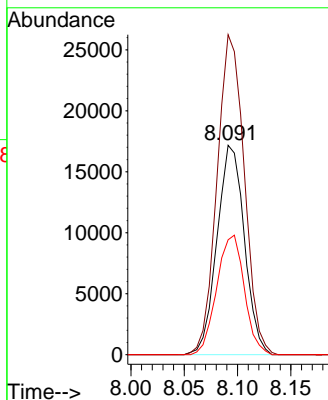
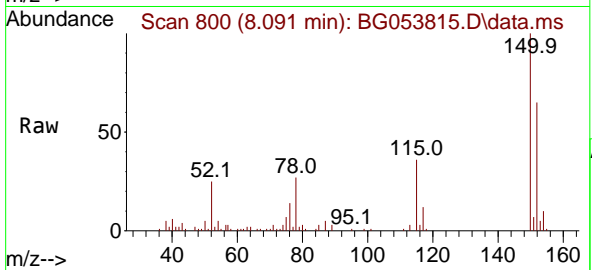




#1
 1,4-Dichlorobenzene-d4
 Concen: 20.000 ng
 RT: 8.091 min Scan# 801
 Delta R.T. -0.005 min
 Lab File: BG053815.D
 Acq: 3 Jun 2022 16:18

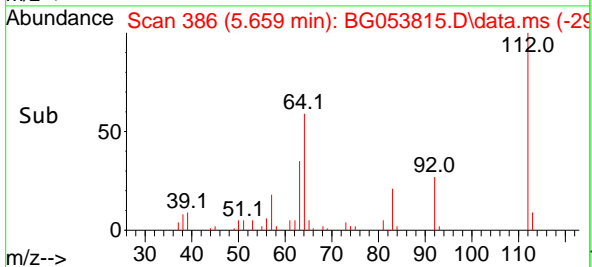
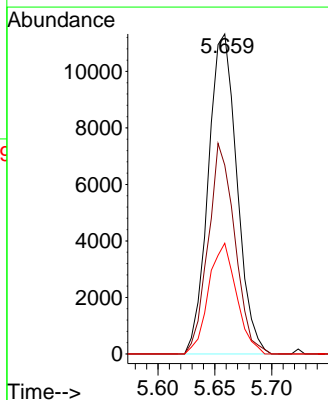
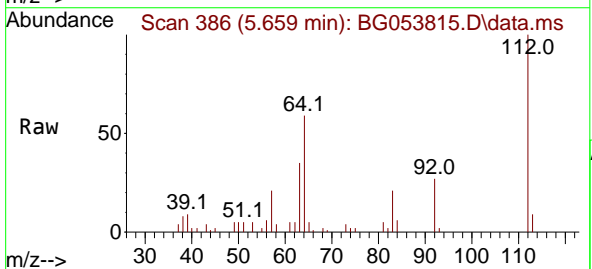
Instrument : BNA_G
 ClientSampleId : 20220424-AMENDED-COMPOSITE-D

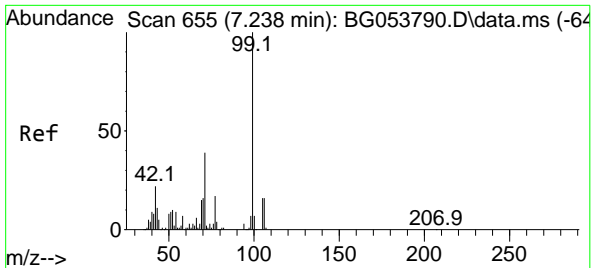
Tgt Ion:152 Resp: 30654
 Ion Ratio Lower Upper
 152 100
 150 152.8 131.6 197.4
 115 54.8 50.9 76.3



#5
 2-Fluorophenol
 Concen: 11.915 ng
 RT: 5.659 min Scan# 386
 Delta R.T. 0.007 min
 Lab File: BG053815.D
 Acq: 3 Jun 2022 16:18

Tgt Ion:112 Resp: 19889
 Ion Ratio Lower Upper
 112 100
 64 59.0 55.1 82.7
 63 34.6 30.4 45.6



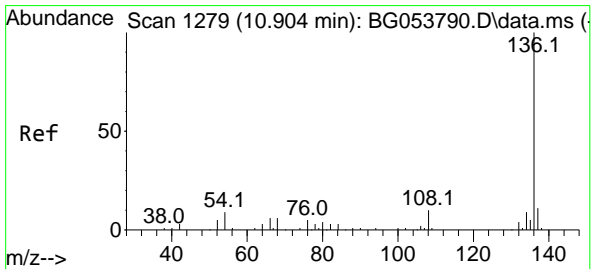
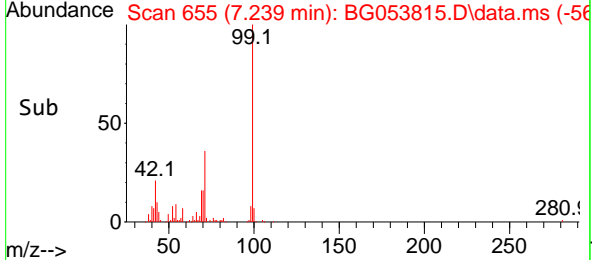
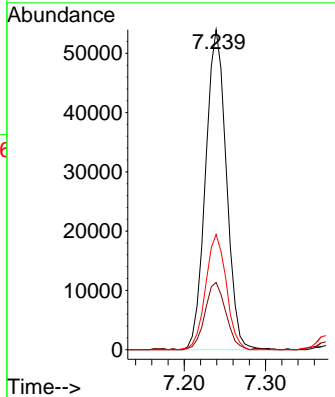
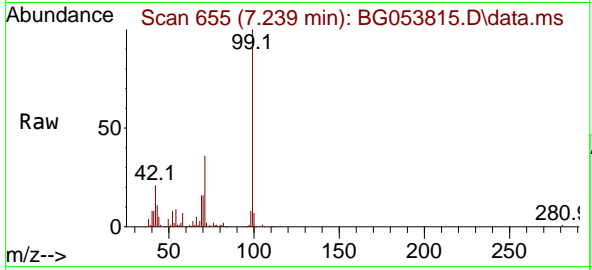


#7
 Phenol-d6
 Concen: 42.398 ng
 RT: 7.239 min Scan# 61
 Delta R.T. 0.001 min
 Lab File: BG053815.D
 Acq: 3 Jun 2022 16:18

Instrument : BNA_G
 ClientSampleId : 20220424-AMENDED-COMPOSITE-D

Tgt Ion: 99 Resp: 95872

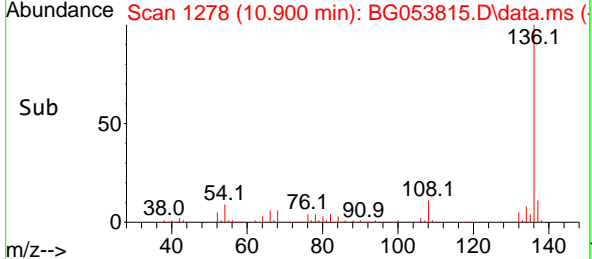
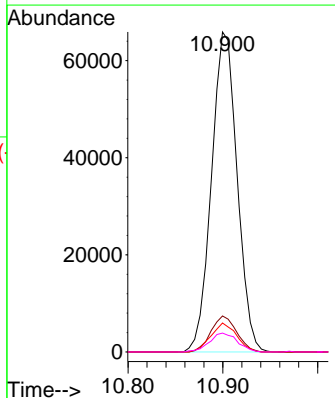
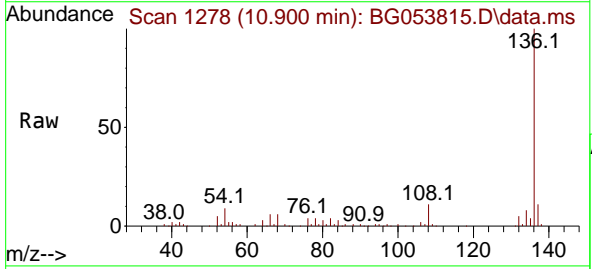
Ion	Ratio	Lower	Upper
99	100		
42	21.0	17.0	25.6
71	36.0	33.8	50.8

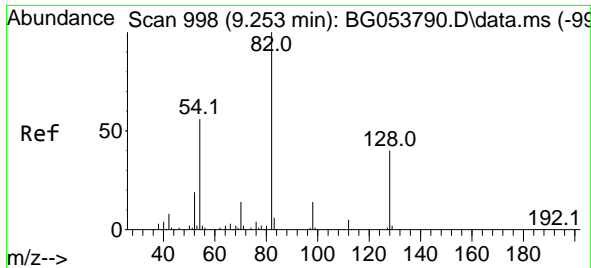


#21
 Naphthalene-d8
 Concen: 20.000 ng
 RT: 10.900 min Scan# 1278
 Delta R.T. -0.004 min
 Lab File: BG053815.D
 Acq: 3 Jun 2022 16:18

Tgt Ion: 136 Resp: 123870

Ion	Ratio	Lower	Upper
136	100		
137	11.3	8.5	12.7
54	9.1	7.4	11.2
68	5.9	4.9	7.3

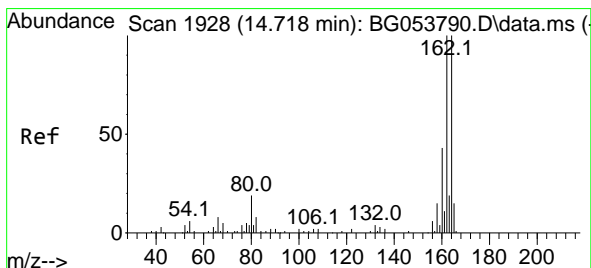
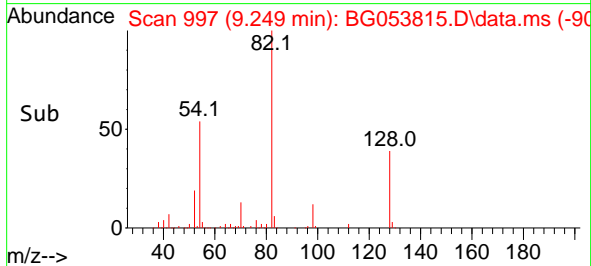
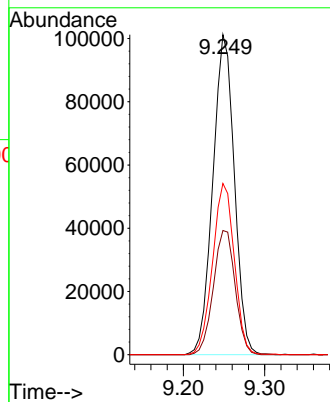
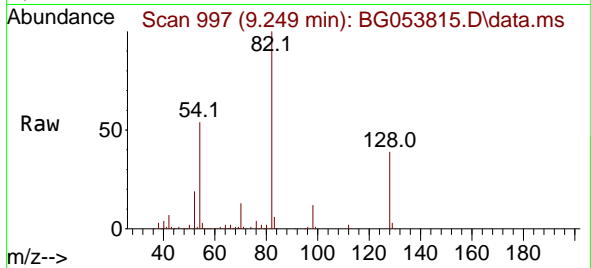




#23
 Nitrobenzene-d5
 Concen: 98.744 ng
 RT: 9.249 min Scan# 91
 Delta R.T. -0.004 min
 Lab File: BG053815.D
 Acq: 3 Jun 2022 16:18

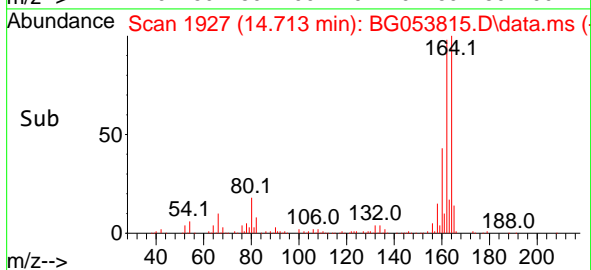
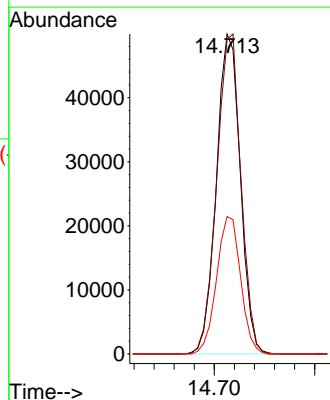
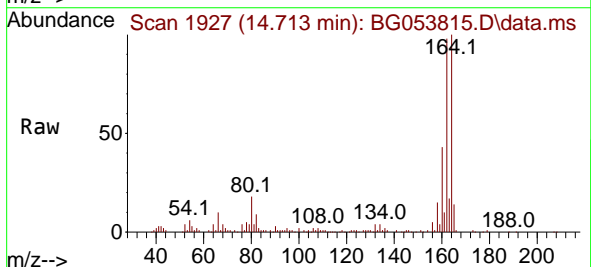
Instrument :
 BNA_G
 ClientSampleId :
 20220424-AMENDED-COMPOSITE-D

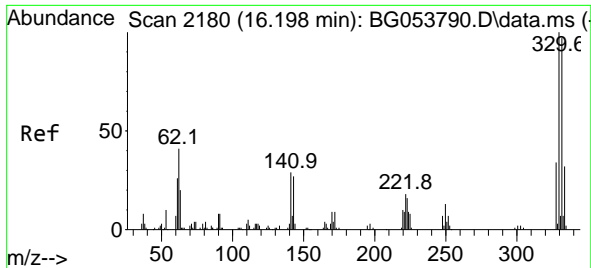
Tgt Ion	Resp	Lower	Upper
82	186261		
128	38.8	27.9	41.9
54	53.5	41.2	61.8



#39
 Acenaphthene-d10
 Concen: 20.000 ng
 RT: 14.713 min Scan# 1927
 Delta R.T. -0.005 min
 Lab File: BG053815.D
 Acq: 3 Jun 2022 16:18

Tgt Ion	Resp	Lower	Upper
164	82367		
162	98.3	82.3	123.5
160	43.0	34.2	51.2

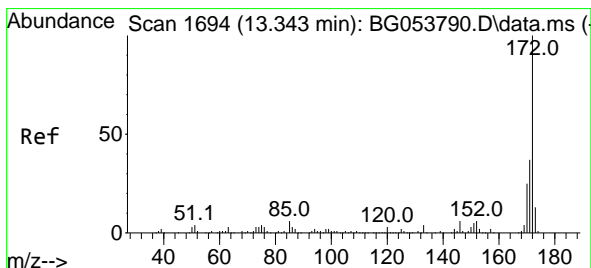
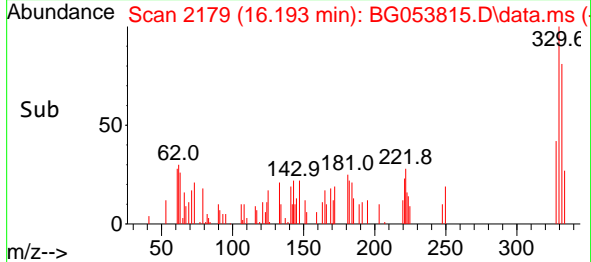
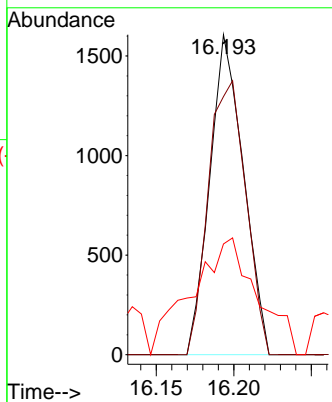
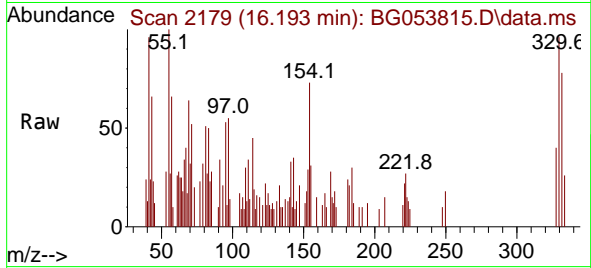




#42
 2,4,6-Tribromophenol
 Concen: 2.426 ng
 RT: 16.193 min Scan# 2180
 Delta R.T. -0.005 min
 Lab File: BG053815.D
 Acq: 3 Jun 2022 16:18

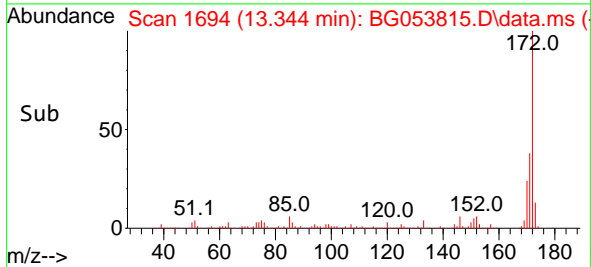
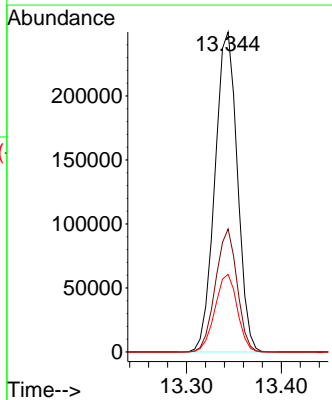
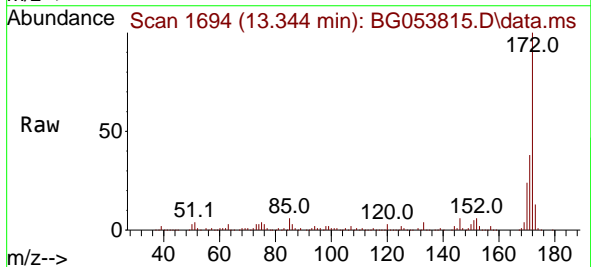
Instrument : BNA_G
 ClientSampleId : 20220424-AMENDED-COMPOSITE-D

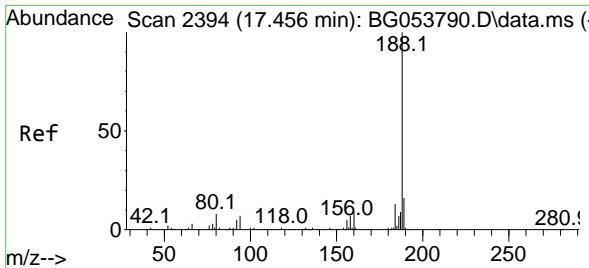
Tgt Ion:330 Resp: 2426
 Ion Ratio Lower Upper
 330 100
 332 95.5 76.0 114.0
 141 71.1 27.1 40.7#



#45
 2-Fluorobiphenyl
 Concen: 74.642 ng
 RT: 13.344 min Scan# 1694
 Delta R.T. 0.001 min
 Lab File: BG053815.D
 Acq: 3 Jun 2022 16:18

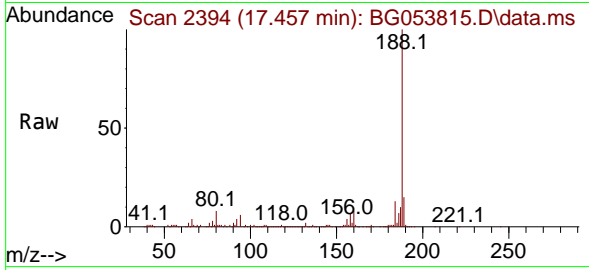
Tgt Ion:172 Resp: 410962
 Ion Ratio Lower Upper
 172 100
 171 38.4 28.5 42.7
 170 24.3 18.9 28.3



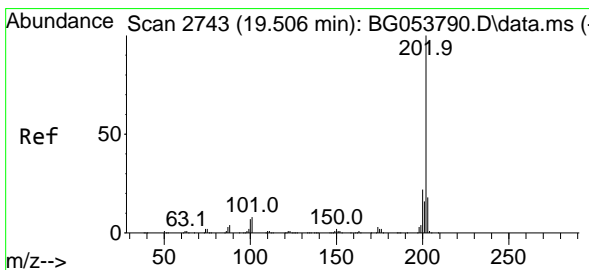
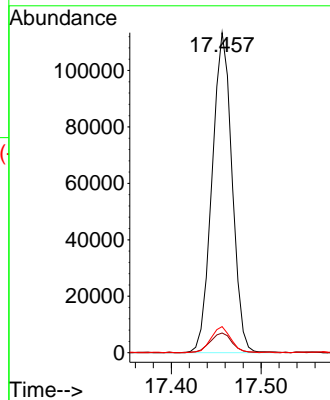
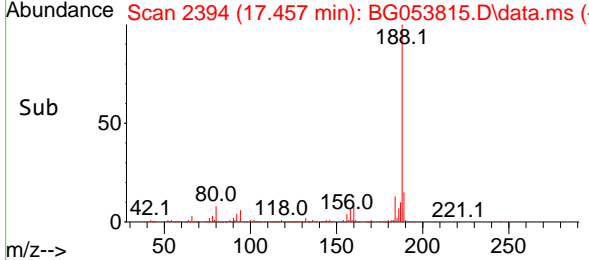


#64
 Phenanthrene-d10
 Concen: 20.000 ng
 RT: 17.457 min Scan# 21
 Delta R.T. 0.001 min
 Lab File: BG053815.D
 Acq: 3 Jun 2022 16:18

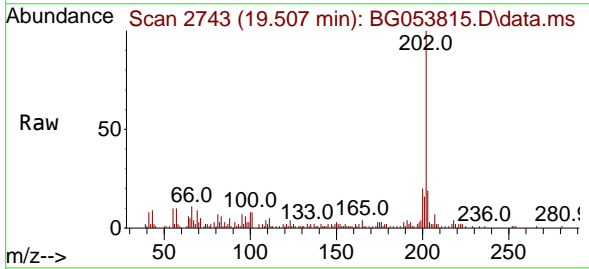
Instrument :
 BNA_G
 ClientSampleId :
 20220424-AMENDED-COMPOSITE-D



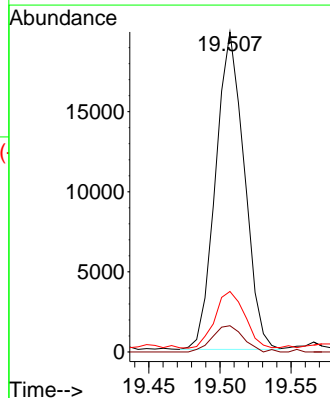
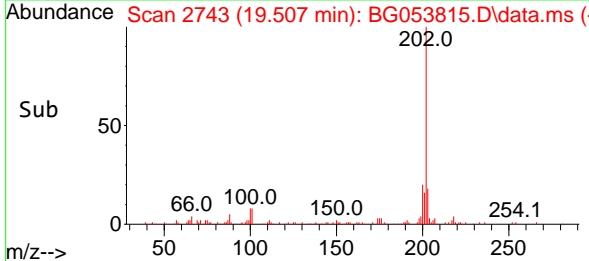
Tgt Ion:188 Resp: 175282
 Ion Ratio Lower Upper
 188 100
 94 6.2 5.4 8.0
 80 8.1 6.8 10.2

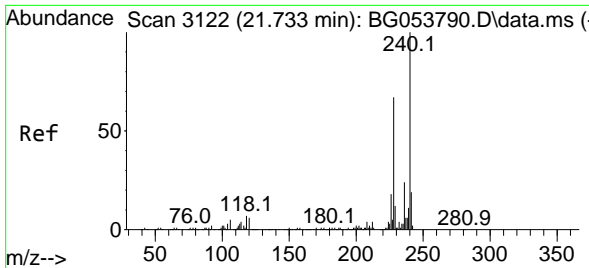


#75
 Fluoranthene
 Concen: 2.323 ng
 RT: 19.507 min Scan# 2743
 Delta R.T. 0.001 min
 Lab File: BG053815.D
 Acq: 3 Jun 2022 16:18



Tgt Ion:202 Resp: 27797
 Ion Ratio Lower Upper
 202 100
 101 8.2 0.0 26.9
 203 18.9 0.0 37.2



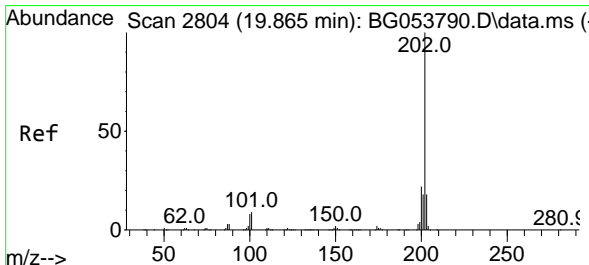
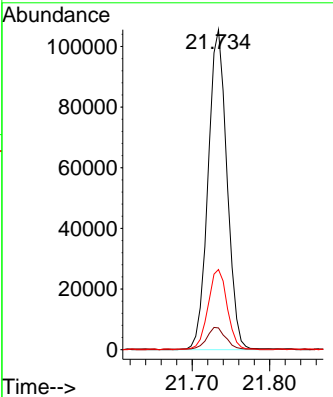
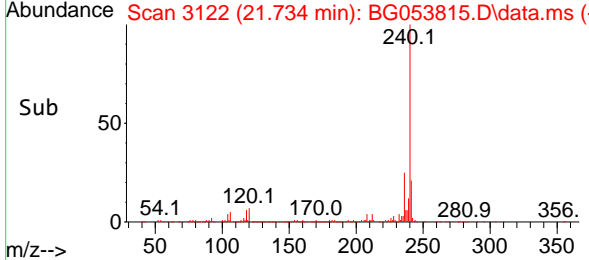
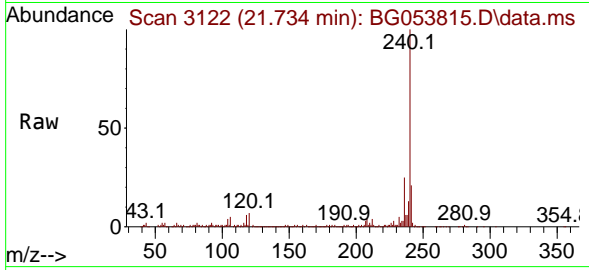


#76
 Chrysene-d12
 Concen: 20.000 ng
 RT: 21.734 min Scan# 31
 Delta R.T. 0.001 min
 Lab File: BG053815.D
 Acq: 3 Jun 2022 16:18

Instrument : BNA_G
 ClientSampleId : 20220424-AMENDED-COMPOSITE-D

Tgt Ion:240 Resp: 178614

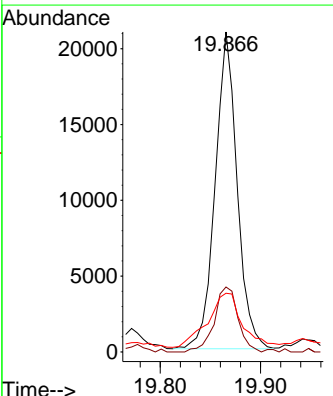
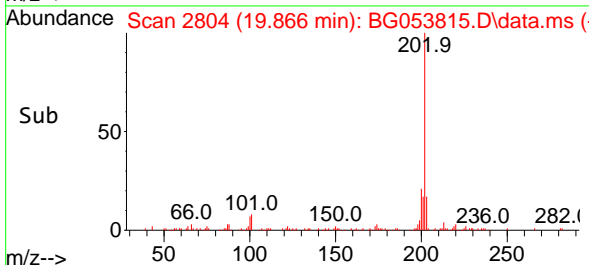
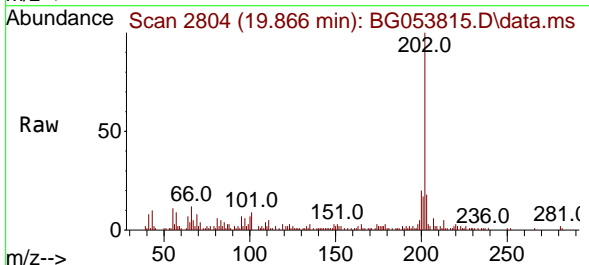
Ion	Ratio	Lower	Upper
240	100		
120	6.8	4.6	7.0
236	25.1	20.2	30.4

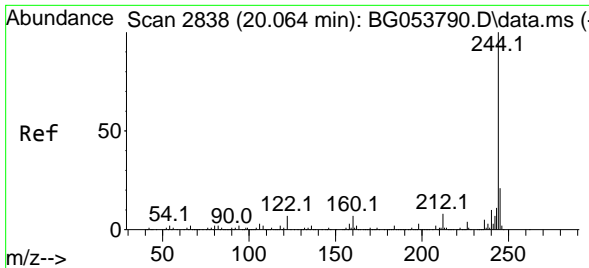


#78
 Pyrene
 Concen: 2.793 ng
 RT: 19.866 min Scan# 2804
 Delta R.T. 0.001 min
 Lab File: BG053815.D
 Acq: 3 Jun 2022 16:18

Tgt Ion:202 Resp: 31722

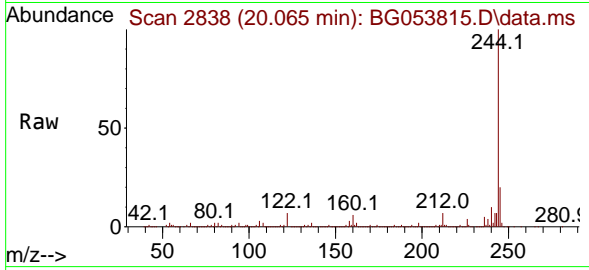
Ion	Ratio	Lower	Upper
202	100		
200	20.3	16.6	24.8
203	18.3	14.6	21.8



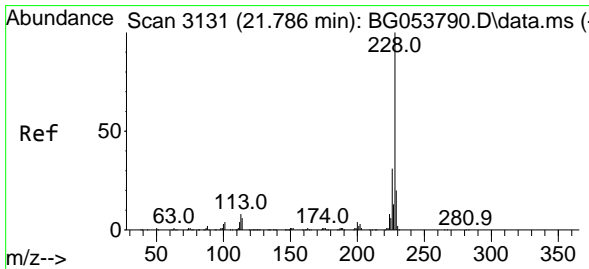
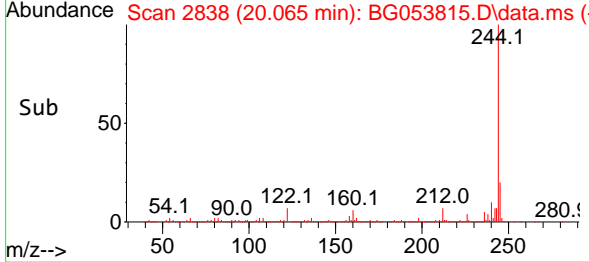
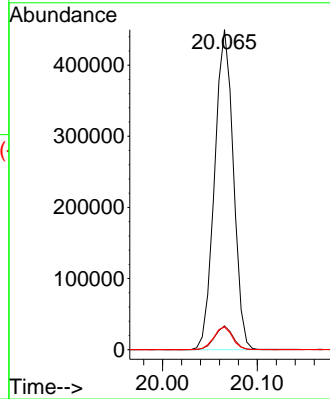


#79
 Terphenyl-d14
 Concen: 68.998 ng
 RT: 20.065 min Scan# 21
 Delta R.T. 0.001 min
 Lab File: BG053815.D
 Acq: 3 Jun 2022 16:18

Instrument : BNA_G
 ClientSampleId : 20220424-AMENDED-COMPOSITE-D

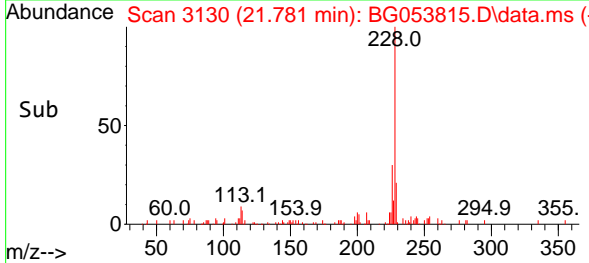
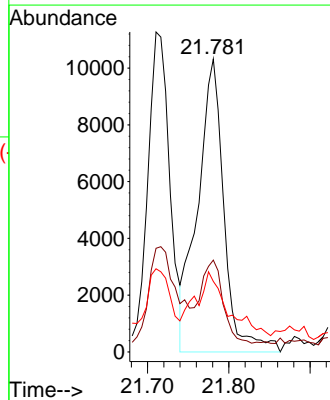
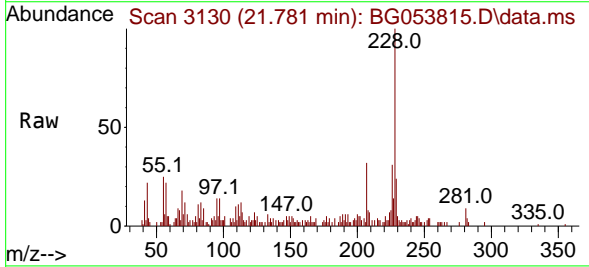


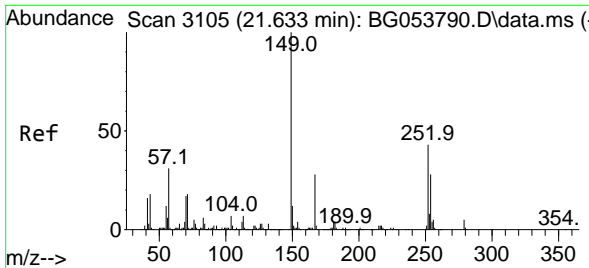
Tgt Ion:244 Resp: 619479
 Ion Ratio Lower Upper
 244 100
 212 7.5 6.5 9.7
 122 7.0 5.0 7.4



#83
 Chrysene
 Concen: 2.080 ng
 RT: 21.781 min Scan# 3130
 Delta R.T. -0.005 min
 Lab File: BG053815.D
 Acq: 3 Jun 2022 16:18

Tgt Ion:228 Resp: 23279
 Ion Ratio Lower Upper
 228 100
 226 31.3 23.4 35.2
 229 24.1 15.5 23.3#

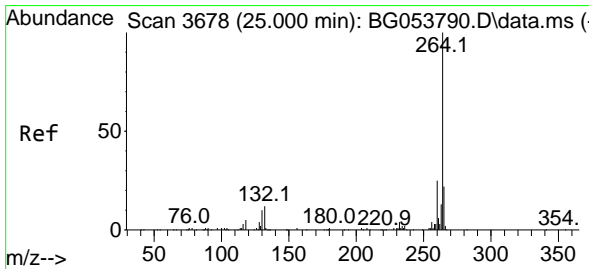
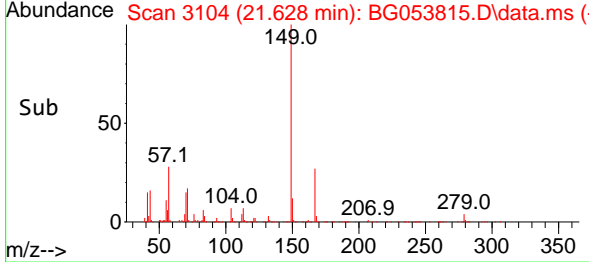
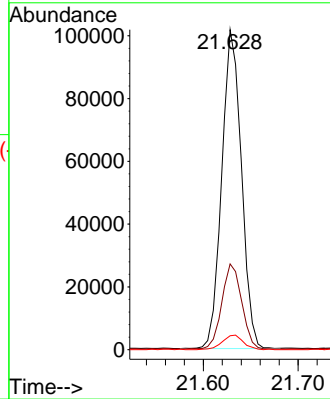
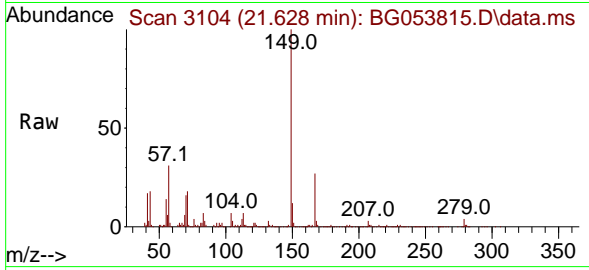




#84
 Bis(2-ethylhexyl)phthalate
 Concen: 27.422 ng
 RT: 21.628 min Scan# 3104
 Delta R.T. -0.005 min
 Lab File: BG053815.D
 Acq: 3 Jun 2022 16:18

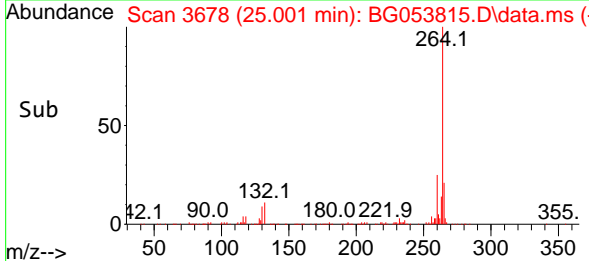
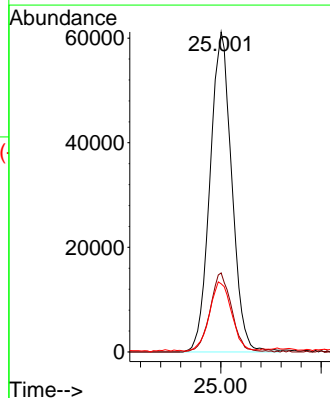
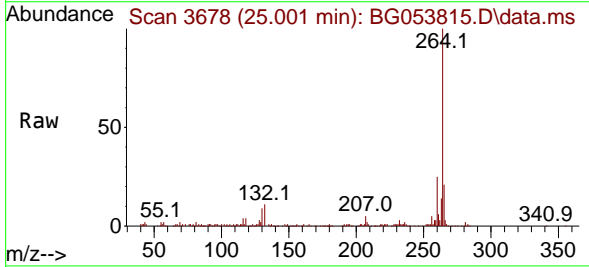
Instrument : BNA_G
 ClientSampleId : 20220424-AMENDED-COMPOSITE-D

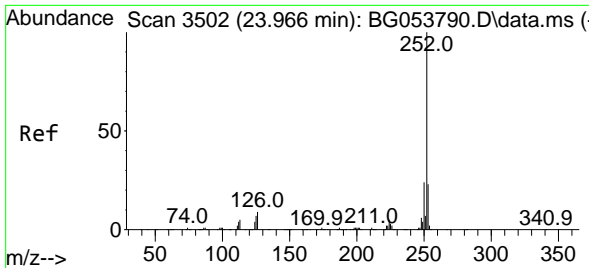
Tgt Ion	Resp	Lower	Upper
149	146083	100	100
167	26.8	20.2	30.4
279	4.4	3.6	5.4



#86
 Perylene-d12
 Concen: 20.000 ng
 RT: 25.001 min Scan# 3678
 Delta R.T. 0.001 min
 Lab File: BG053815.D
 Acq: 3 Jun 2022 16:18

Tgt Ion	Resp	Lower	Upper
264	183936	100	100
260	24.7	19.0	28.6
265	21.3	17.4	26.2

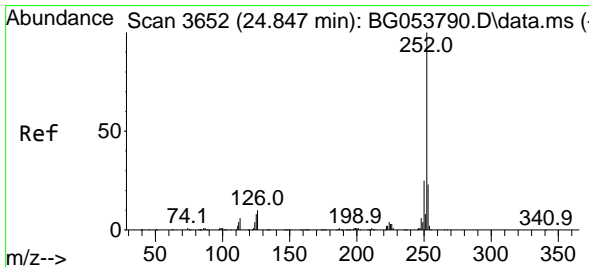
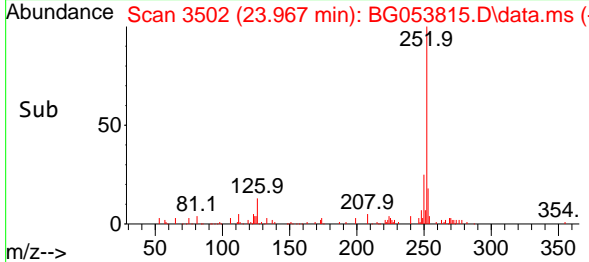
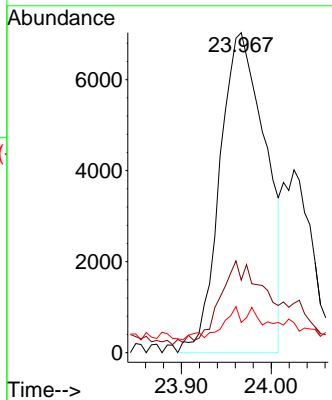
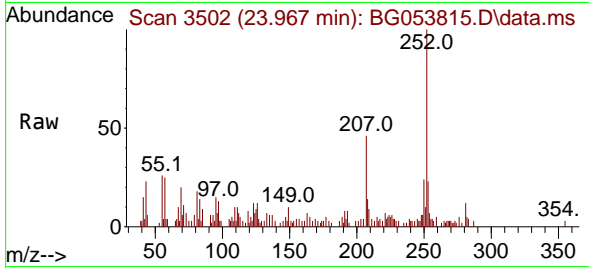




#88
 Benzo(b)fluoranthene
 Concen: 2.176 ng
 RT: 23.967 min Scan# 31
 Delta R.T. 0.001 min
 Lab File: BG053815.D
 Acq: 3 Jun 2022 16:18

Instrument : BNA_G
 ClientSampleId : 20220424-AMENDED-COMPOSITE-D

Tgt Ion	Resp	Lower	Upper
252	100		
253	22.7	18.0	27.0
125	9.5	4.6	6.8



#90
 Benzo(a)pyrene
 Concen: 2.353 ng
 RT: 24.842 min Scan# 3651
 Delta R.T. -0.005 min
 Lab File: BG053815.D
 Acq: 3 Jun 2022 16:18

Tgt Ion	Resp	Lower	Upper
252	100		
253	25.9	17.8	26.8
125	11.5	4.3	6.5

