

Data Path : Z:\svoasrv\HPCHEM1\BNA_G\Data\BG060724\
 Data File : BG061567.D
 Acq On : 8 Jun 2024 16:13
 Operator : MA/JU
 Sample : P2647-07
 Misc :
 ALS Vial : 6 Sample Multiplier: 1

Instrument :
 BNA_G
 ClientSampleId :
 BHBS1

Quant Time: Jun 09 23:01:46 2024
 Quant Method : Z:\svoasrv\HPCHEM1\BNA_G\Methods\SFAM-EPA-BG052124.MA.M
 Quant Title : SVOA CALIBRATION
 QLast Update : Thu Jun 06 12:15:45 2024
 Response via : Initial Calibration

Compound	R.T.	QIon	Response	Conc	Units	Dev(Min)
Internal Standards						
1) 1,4-Dichlorobenzene-d4	7.870	152	27150	20.000	ng/ul	0.00
20) Naphthalene-d8	10.667	136	102723	20.000	ng/ul	0.00
38) Acenaphthene-d10	14.510	164	76718	20.000	ng/ul	0.00
64) Phenanthrene-d10	17.265	188	178516	20.000	ng/ul	0.00
79) Chrysene-d12	21.525	240	193652	20.000	ng/ul	0.00
88) Perylene-d12	24.627	264	227522	20.000	ng/ul	0.02
System Monitoring Compounds						
3) 1,4-Dioxane-d8	3.334	96	2230	4.597	ng/uL	-0.02
4) Pyridine-d5	3.746	84	18486	10.711	ng/ul	-0.02
7) Phenol-d5	7.065	99	48998	21.976	ng/ul	0.00
9) Bis-(2-Chloroethyl)eth...	7.201	67	31589	22.541	ng/ul	-0.01
11) 2-Chlorophenol-d4	7.412	132	43539	26.386	ng/ul	0.00
15) 4-Methylphenol-d8	8.593	113	32412	17.049	ng/ul	0.00
21) Nitrobenzene-d5	9.028	128	22495	28.442	ng/ul	-0.01
24) 2-Nitrophenol-d4	9.751	143	25022	27.033	ng/ul	0.00
28) 2,4-Dichlorophenol-d3	10.303	165	50998	28.261	ng/ul	0.00
31) 4-Chloroaniline-d4	10.814	131	9263	3.924	ng/ul	0.00
46) Dimethylphthalate-d6	13.916	166	156739	26.342	ng/ul	0.00
49) Acenaphthylene-d8	14.204	160	172896	27.950	ng/ul	0.00
54) 4-Nitrophenol-d4	14.762	143	13709	18.636	ng/ul	0.00
60) Fluorene-d10	15.503	176	140351	27.321	ng/ul	0.00
65) 4,6-Dinitro-2-methylph...	15.655	200	18355	17.000	ng/ul	0.00
73) Anthracene-d10	17.359	188	225549	28.659	ng/ul	0.00
81) Pyrene-d10	19.657	212	245883	24.729	ng/ul	0.00
92) Benzo(a)pyrene-d12	24.416	264	212349	19.413	ng/ul	0.02
Target Compounds						
30) Naphthalene	10.714	128	25108	4.631	ng/ul	98
32) 4-Chloroaniline	10.720	127	3399	1.449	ng/ul#	52
36) 2-Methylnaphthalene	12.324	142	8882	2.259	ng/ul	94
37) 1-Methylnaphthalene	12.547	142	7520	1.864	ng/ul#	93
52) Acenaphthene	14.574	153	12436	2.764	ng/ul	95
56) Dibenzofuran	14.909	168	15604	2.425	ng/ul	95
61) Fluorene	15.561	166	15784	2.835	ng/ul	94
72) Phenanthrene	17.306	178	332513	38.377	ng/ul	97
74) Anthracene	17.394	178	54162	6.046	ng/ul	99
77) Carbazole	17.671	167	28569	3.921	ng/ul	100
78) Di-n-butylphthalate	18.223	149	13867	1.519	ng/ul	97
80) Fluoranthene	19.328	202	649211	54.427	ng/ul	98
82) Pyrene	19.692	202	501764	40.525	ng/ul#	96
83) Butylbenzylphthalate	20.573	149	12072	2.838	ng/ul#	91
85) Benzo(a)anthracene	21.507	228	351734	26.323	ng/ul	96
86) Bis(2-ethylhexyl)phtha...	21.407	149	130717	20.762	ng/ul#	97
87) Chrysene	21.566	228	370074	30.079	ng/ul	97
90) Benzo(b)fluoranthene	23.652	252	487711	36.003	ng/ul	97
91) Benzo(k)fluoranthene	23.652	252	487711	35.465	ng/ul	94
93) Benzo(a)pyrene	24.480	252	197651	15.365	ng/ul	95
94) Indeno(1,2,3-cd)pyrene	28.158	276	134565	8.651	ng/ul	95
95) Dibenzo(a,h)anthracene	28.188	278	44250	3.450	ng/ul#	81

Data Path : Z:\svoasrv\HPCHEM1\BNA_G\Data\BG060724\
Data File : BG061567.D
Acq On : 8 Jun 2024 16:13
Operator : MA/JU
Sample : P2647-07
Misc :
ALS Vial : 6 Sample Multiplier: 1

Instrument :
BNA_G
ClientSampleId :
BHBS1

Quant Time: Jun 09 23:01:46 2024
Quant Method : Z:\svoasrv\HPCHEM1\BNA_G\Methods\SFAM-EPA-BG052124.MA.M
Quant Title : SVOA CALIBRATION
QLast Update : Thu Jun 06 12:15:45 2024
Response via : Initial Calibration

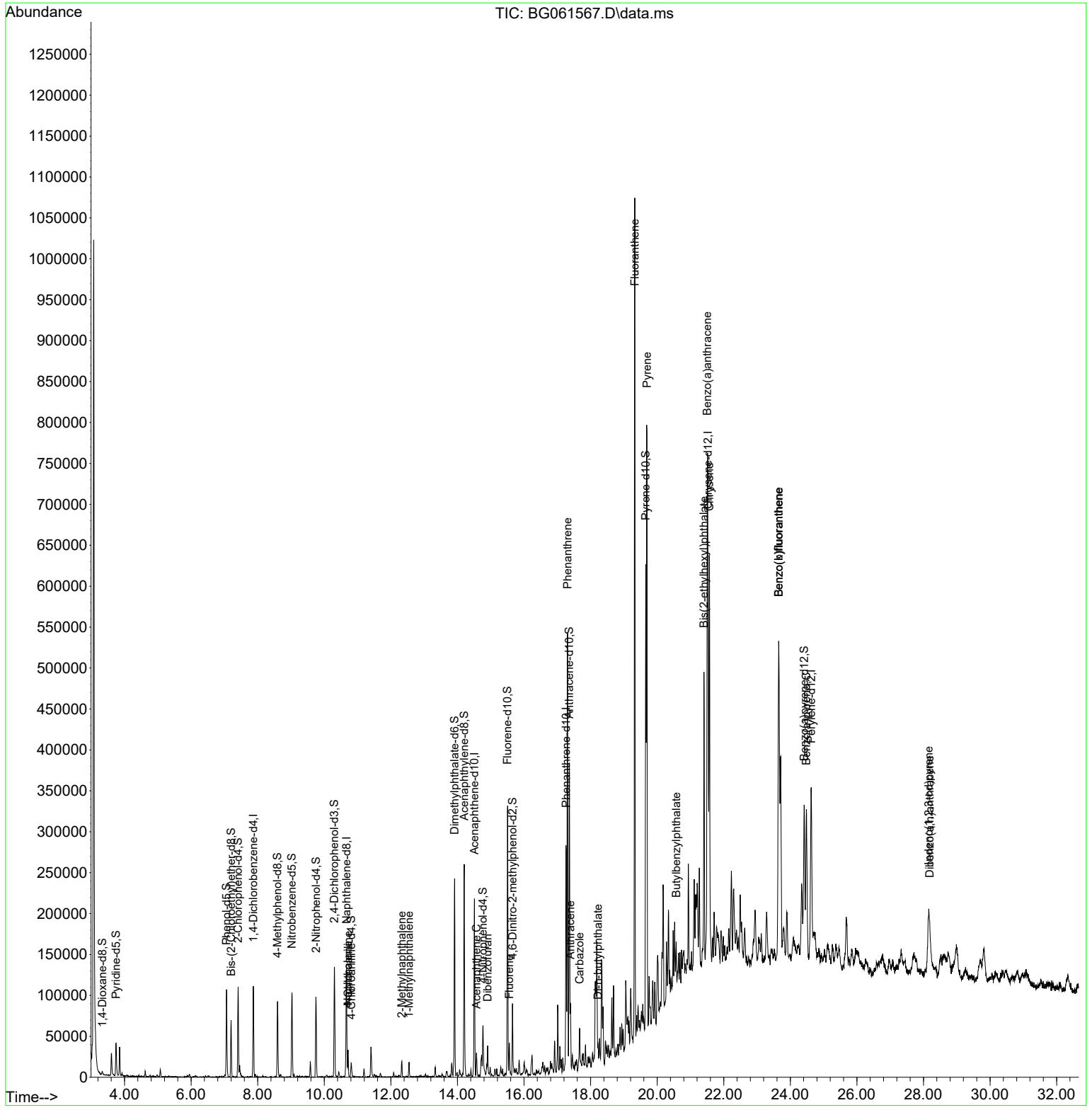
Compound	R.T.	QIon	Response	Conc	Units	Dev(Min)

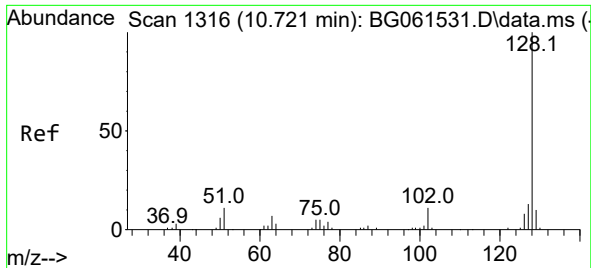
(#) = qualifier out of range (m) = manual integration (+) = signals summed						

Data Path : Z:\svoasrv\HPCHEM1\BNA_G\Data\BG060724\
 Data File : BG061567.D
 Acq On : 8 Jun 2024 16:13
 Operator : MA/JU
 Sample : P2647-07
 Misc :
 ALS Vial : 6 Sample Multiplier: 1

Instrument :
 BNA_G
 ClientSampleId :
 BHBS1

Quant Time: Jun 09 23:01:46 2024
 Quant Method : Z:\svoasrv\HPCHEM1\BNA_G\Methods\SFAM-EPA-BG052124.MA.M
 Quant Title : SVOA CALIBRATION
 QLast Update : Thu Jun 06 12:15:45 2024
 Response via : Initial Calibration

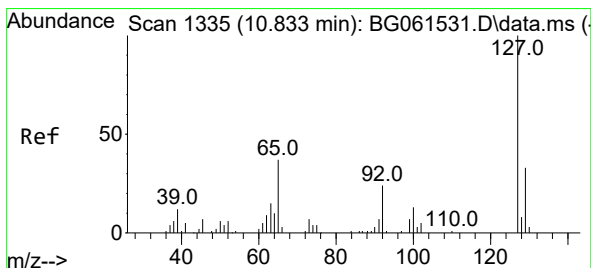
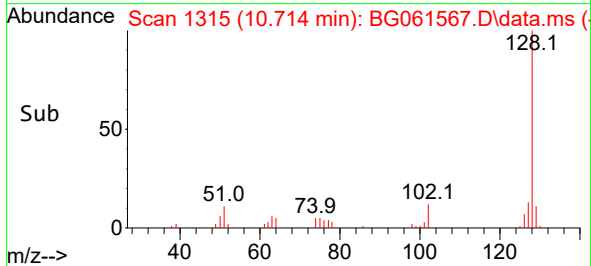
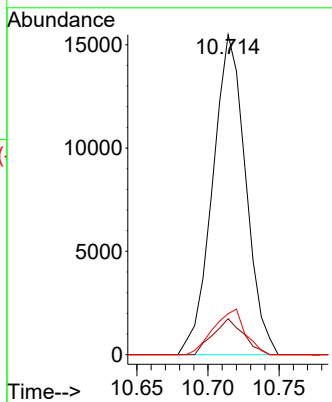
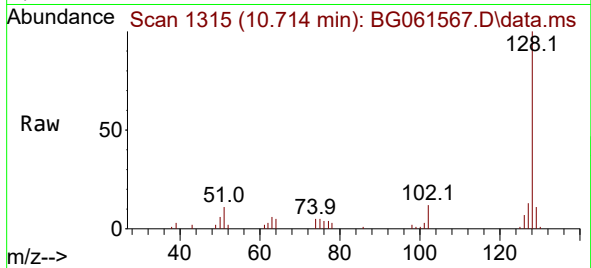




#30
 Naphthalene
 Concen: 4.631 ng/ul
 RT: 10.714 min Scan# 1315
 Delta R.T. -0.006 min
 Lab File: BG061567.D
 Acq: 8 Jun 2024 16:13

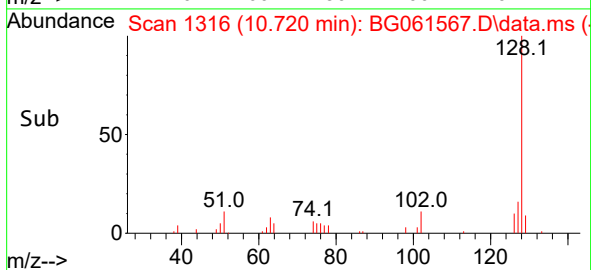
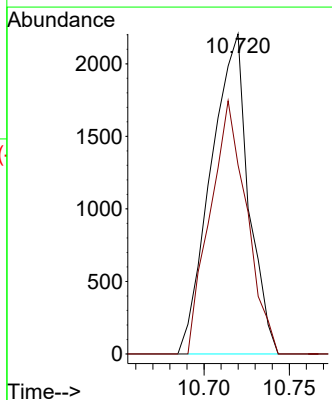
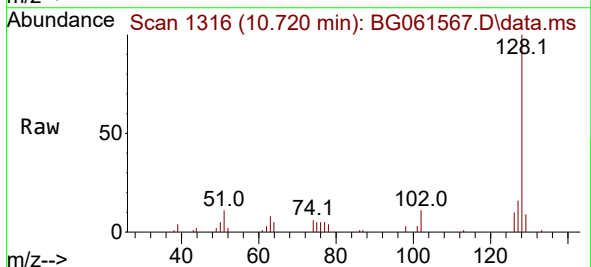
Instrument :
 BNA_G
 ClientSampleId :
 BHBS1

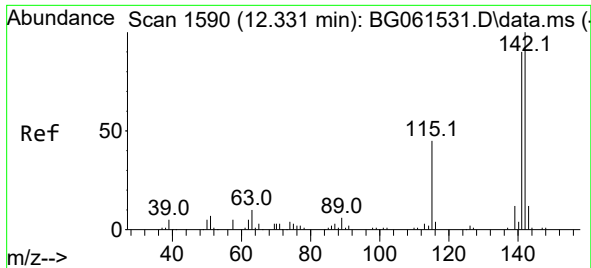
Tgt Ion:128 Resp: 25108
 Ion Ratio Lower Upper
 128 100
 129 11.3 8.6 12.8
 127 12.8 10.8 16.2



#32
 4-Chloroaniline
 Concen: 1.449 ng/ul
 RT: 10.720 min Scan# 1316
 Delta R.T. -0.112 min
 Lab File: BG061567.D
 Acq: 8 Jun 2024 16:13

Tgt Ion:127 Resp: 3399
 Ion Ratio Lower Upper
 127 100
 129 59.1 25.9 38.9#

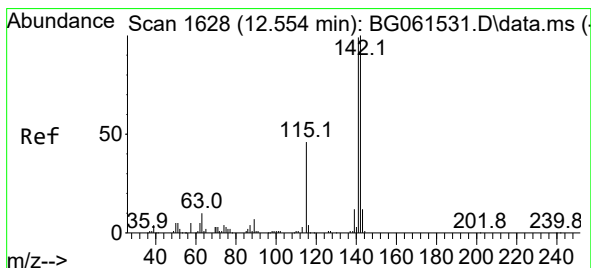
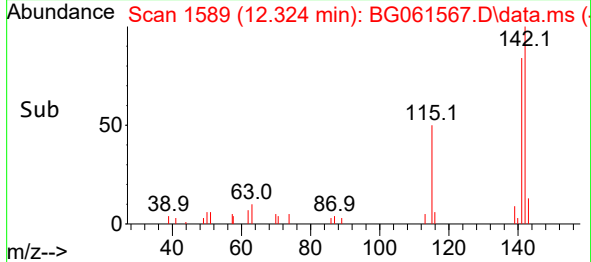
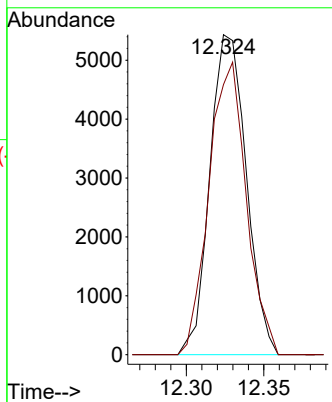
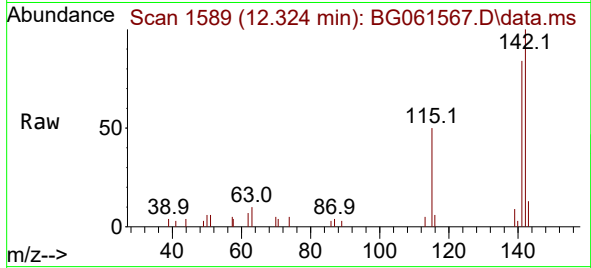




#36
 2-Methylnaphthalene
 Concen: 2.259 ng/ul
 RT: 12.324 min Scan# 1589
 Delta R.T. -0.006 min
 Lab File: BG061567.D
 Acq: 8 Jun 2024 16:13

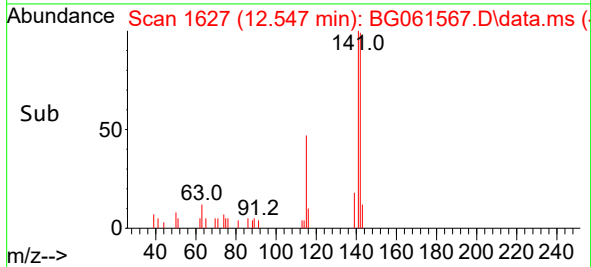
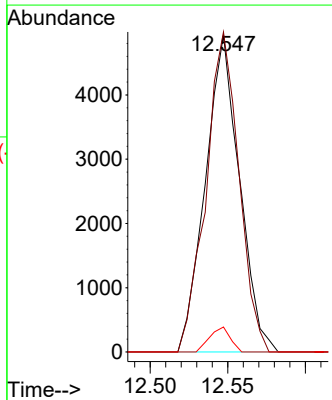
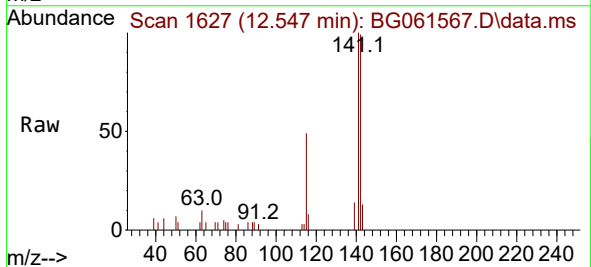
Instrument :
 BNA_G
 ClientSampleId :
 BHBS1

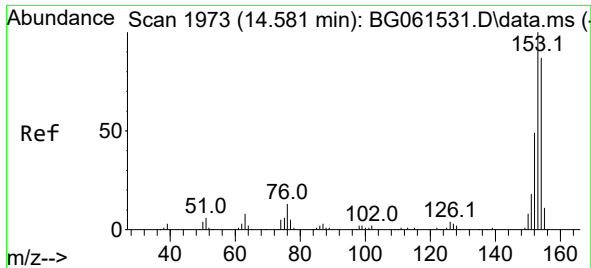
Tgt Ion:142 Resp: 8882
 Ion Ratio Lower Upper
 142 100
 141 84.4 72.2 108.2



#37
 1-Methylnaphthalene
 Concen: 1.864 ng/ul
 RT: 12.547 min Scan# 1627
 Delta R.T. 0.000 min
 Lab File: BG061567.D
 Acq: 8 Jun 2024 16:13

Tgt Ion:142 Resp: 7520
 Ion Ratio Lower Upper
 142 100
 141 100.8 75.5 113.3
 116 7.9 4.0 6.0#

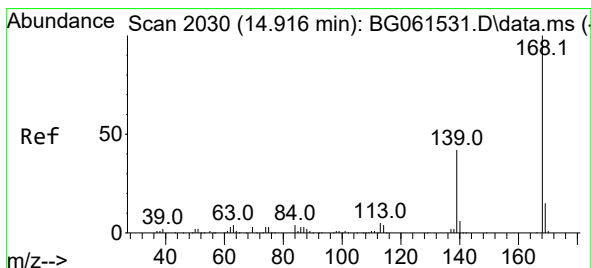
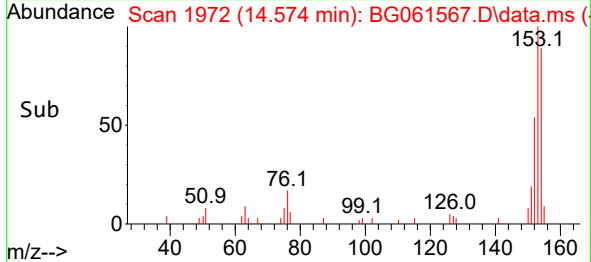
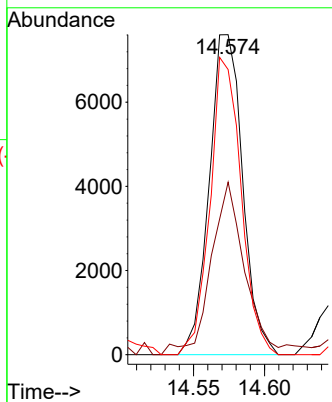
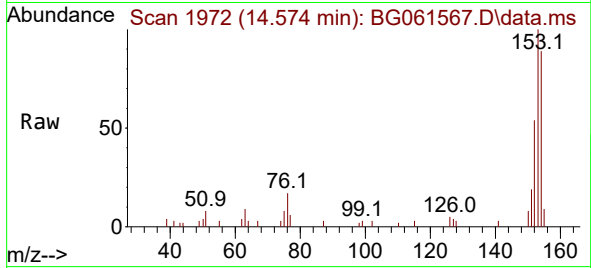




#52
 Acenaphthene
 Concen: 2.764 ng/u1
 RT: 14.574 min Scan# 1972
 Delta R.T. -0.000 min
 Lab File: BG061567.D
 Acq: 8 Jun 2024 16:13

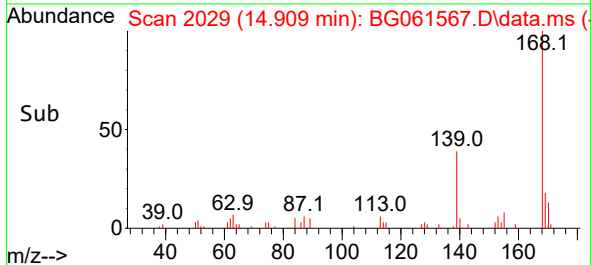
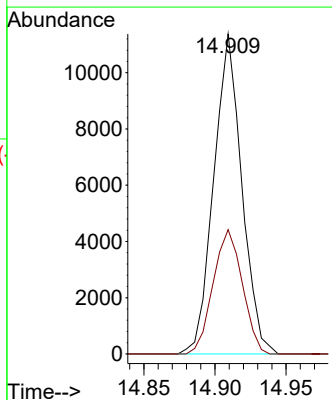
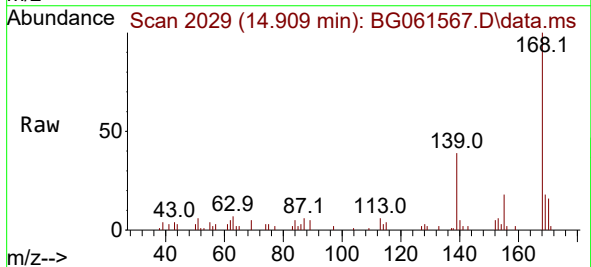
Instrument : BNA_G
 ClientSampleId : BHBS1

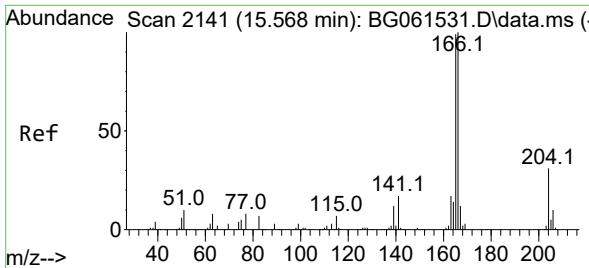
Tgt Ion	Resp	Lower	Upper
153	12436		
152	53.9	37.8	56.8
154	89.1	69.0	103.6



#56
 Dibenzofuran
 Concen: 2.425 ng/u1
 RT: 14.909 min Scan# 2029
 Delta R.T. -0.000 min
 Lab File: BG061567.D
 Acq: 8 Jun 2024 16:13

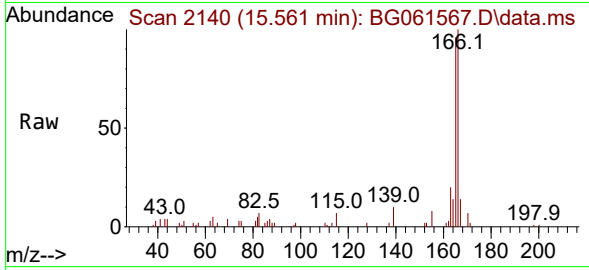
Tgt Ion	Resp	Lower	Upper
168	15604		
168	100		
139	38.9	33.4	50.2



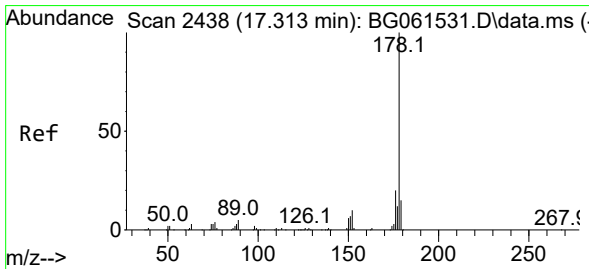
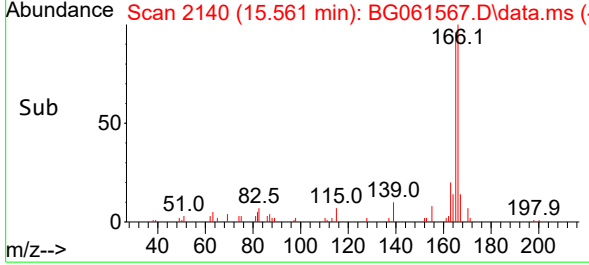
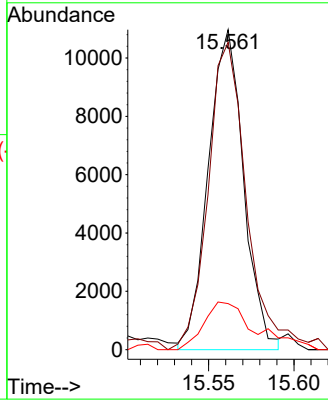


#61
 Fluorene
 Concen: 2.835 ng/uI
 RT: 15.561 min Scan# 2140
 Delta R.T. 0.000 min
 Lab File: BG061567.D
 Acq: 8 Jun 2024 16:13

Instrument :
 BNA_G
 ClientSampleId :
 BHBS1

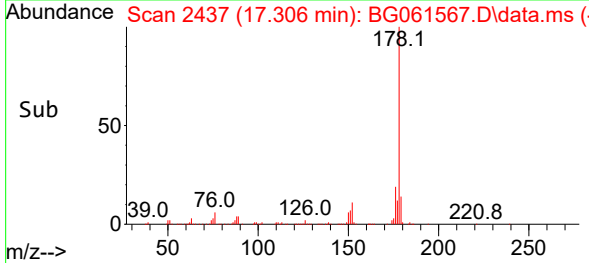
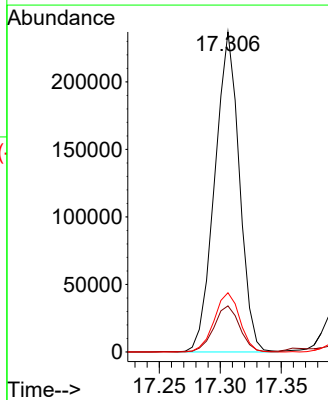
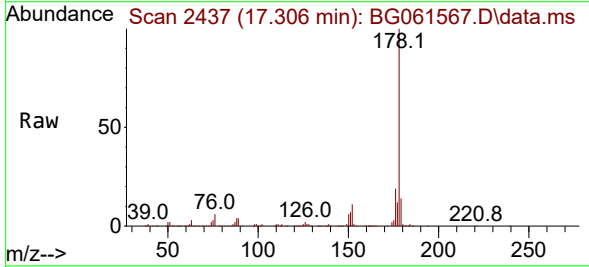


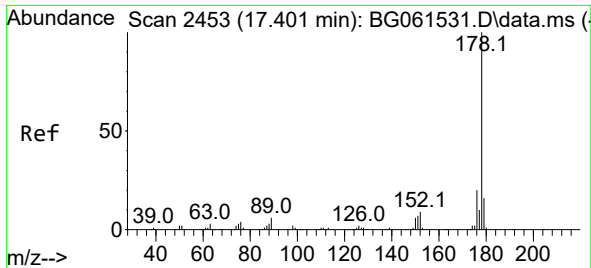
Tgt Ion:166 Resp: 15784
 Ion Ratio Lower Upper
 166 100
 165 96.0 81.8 122.8
 167 14.4 10.6 16.0



#72
 Phenanthrene
 Concen: 38.377 ng/uI
 RT: 17.306 min Scan# 2437
 Delta R.T. -0.000 min
 Lab File: BG061567.D
 Acq: 8 Jun 2024 16:13

Tgt Ion:178 Resp: 332513
 Ion Ratio Lower Upper
 178 100
 179 14.4 12.7 19.1
 176 18.5 15.5 23.3

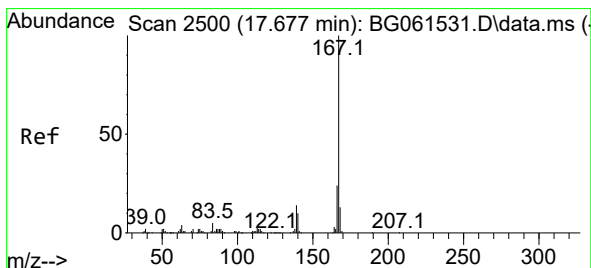
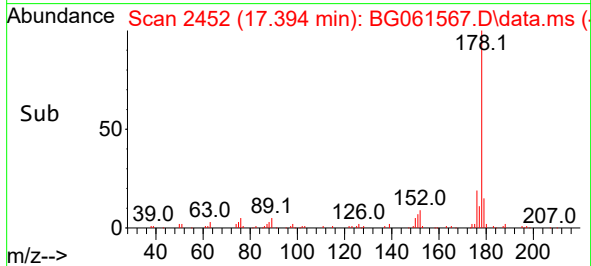
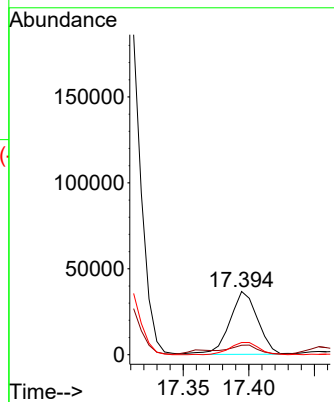
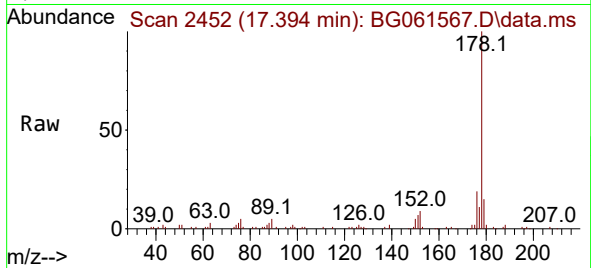




#74
 Anthracene
 Concen: 6.046 ng/uI
 RT: 17.394 min Scan# 2499
 Delta R.T. -0.000 min
 Lab File: BG061567.D
 Acq: 8 Jun 2024 16:13

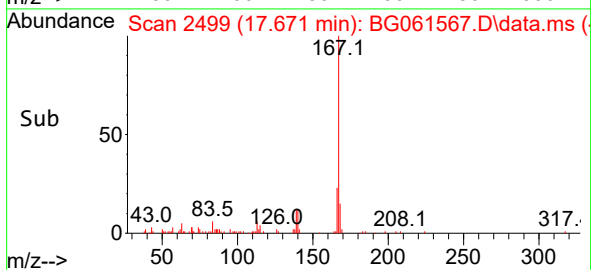
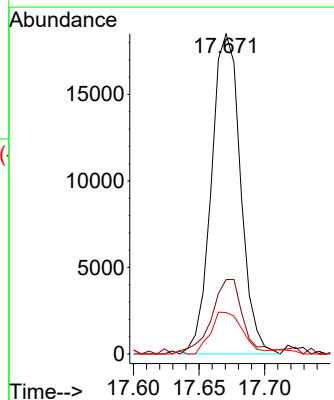
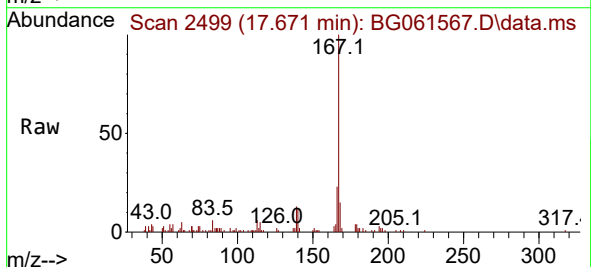
Instrument :
 BNA_G
 ClientSampleId :
 BHBS1

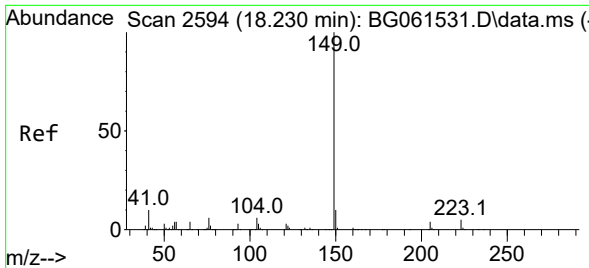
Tgt Ion:178 Resp: 54162
 Ion Ratio Lower Upper
 178 100
 179 14.9 11.8 17.6
 176 19.2 14.9 22.3



#77
 Carbazole
 Concen: 3.921 ng/uI
 RT: 17.671 min Scan# 2499
 Delta R.T. 0.000 min
 Lab File: BG061567.D
 Acq: 8 Jun 2024 16:13

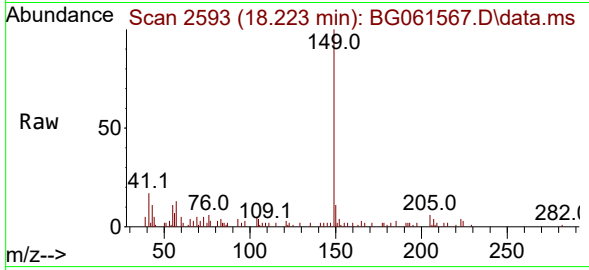
Tgt Ion:167 Resp: 28569
 Ion Ratio Lower Upper
 167 100
 166 23.3 18.6 28.0
 139 13.0 10.6 15.8



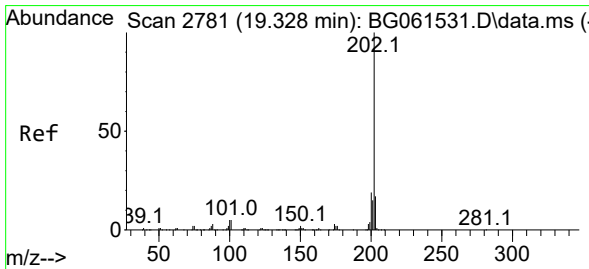
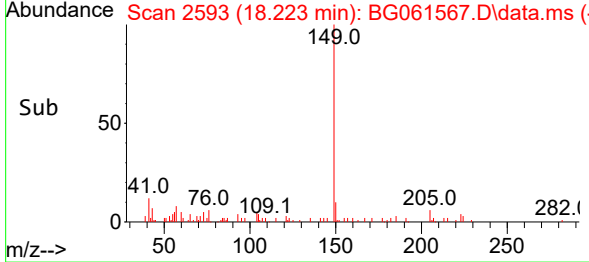
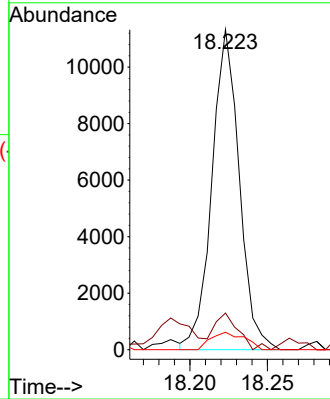


#78
 Di-n-butylphthalate
 Concen: 1.519 ng/u1
 RT: 18.223 min Scan# 21
 Delta R.T. 0.000 min
 Lab File: BG061567.D
 Acq: 8 Jun 2024 16:13

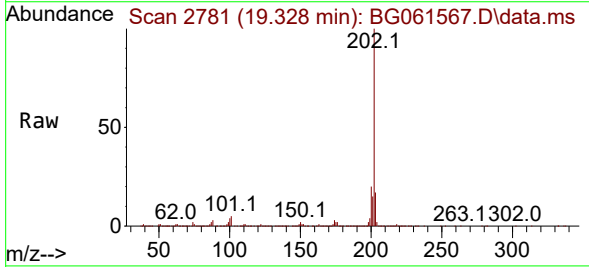
Instrument :
 BNA_G
 ClientSampleId :
 BHBS1



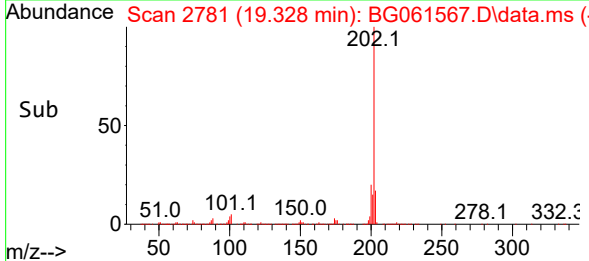
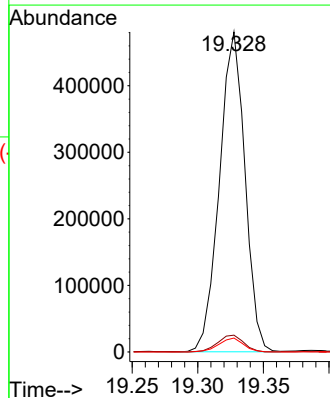
Tgt Ion:149 Resp: 13867
 Ion Ratio Lower Upper
 149 100
 150 11.4 7.8 11.8
 104 5.5 4.8 7.2

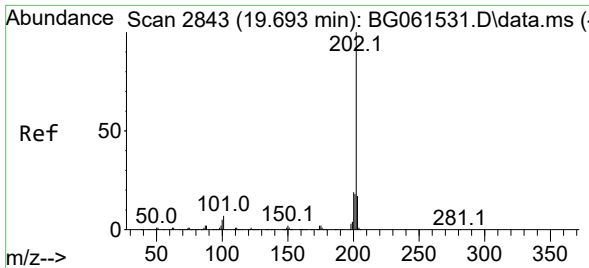


#80
 Fluoranthene
 Concen: 54.427 ng/u1
 RT: 19.328 min Scan# 2781
 Delta R.T. 0.006 min
 Lab File: BG061567.D
 Acq: 8 Jun 2024 16:13



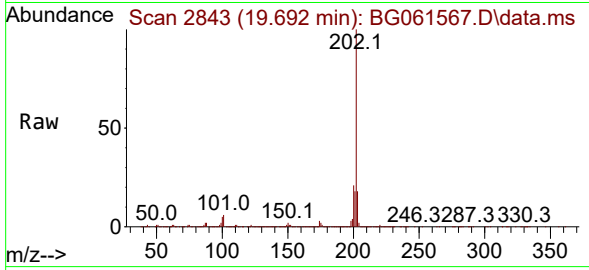
Tgt Ion:202 Resp: 649211
 Ion Ratio Lower Upper
 202 100
 101 5.3 4.8 7.2
 100 4.3 4.1 6.1



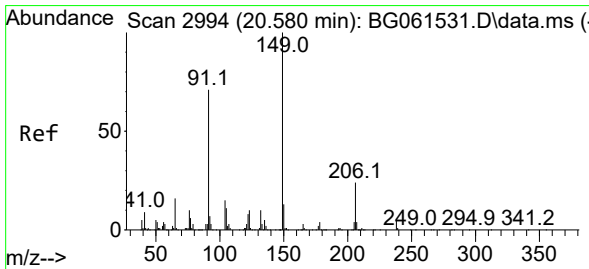
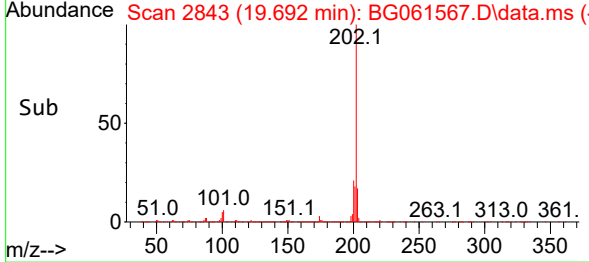
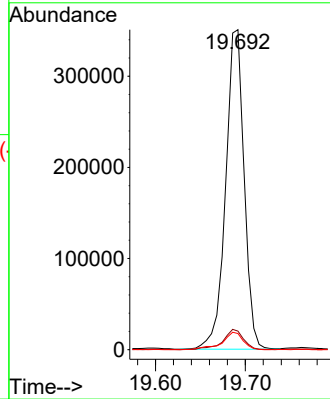


#82
 Pyrene
 Concen: 40.525 ng/uI
 RT: 19.692 min Scan# 2843
 Delta R.T. 0.006 min
 Lab File: BG061567.D
 Acq: 8 Jun 2024 16:13

Instrument : BNA_G
 ClientSampleId : BHBS1

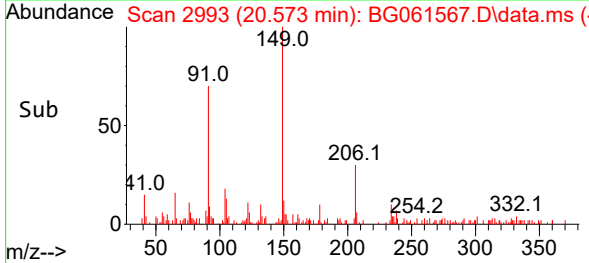
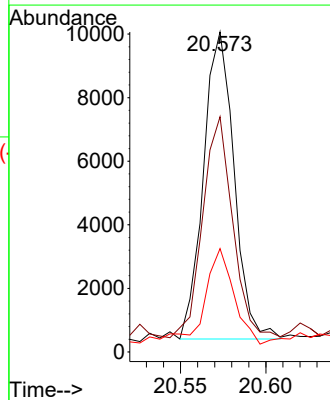
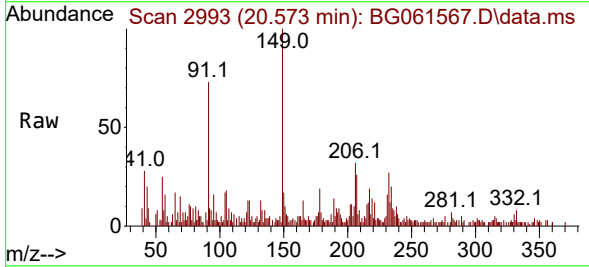


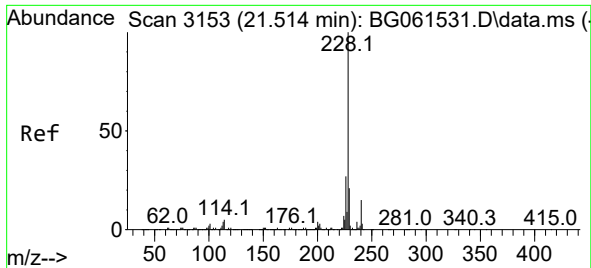
Tgt Ion:202 Resp: 501764
 Ion Ratio Lower Upper
 202 100
 101 5.8 5.7 8.5
 100 5.1 5.1 7.7#



#83
 Butylbenzylphthalate
 Concen: 2.838 ng/uI
 RT: 20.573 min Scan# 2993
 Delta R.T. 0.000 min
 Lab File: BG061567.D
 Acq: 8 Jun 2024 16:13

Tgt Ion:149 Resp: 12072
 Ion Ratio Lower Upper
 149 100
 91 73.5 54.8 82.2
 206 32.3 19.4 29.0#



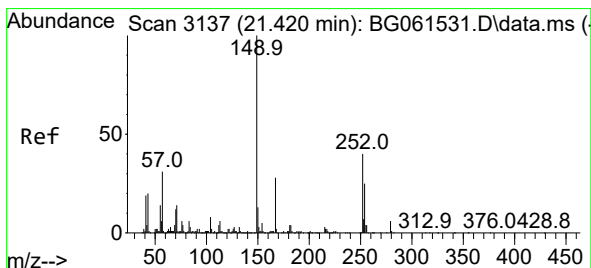
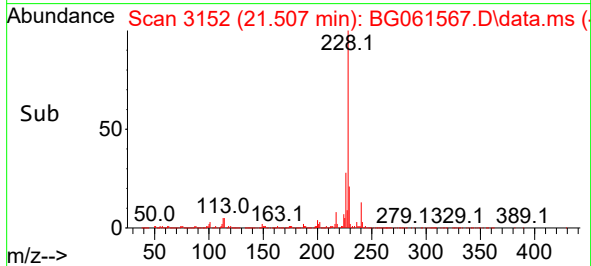
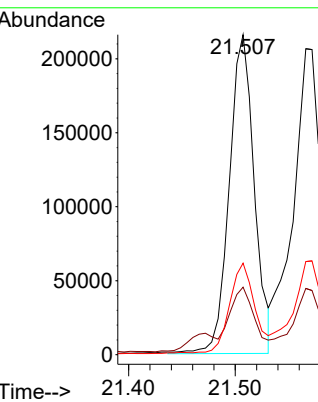
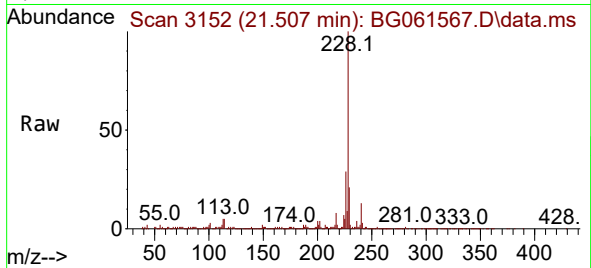


#85
 Benzo(a)anthracene
 Concen: 26.323 ng/uI
 RT: 21.507 min Scan# 3152
 Delta R.T. 0.006 min
 Lab File: BG061567.D
 Acq: 8 Jun 2024 16:13

Instrument : BNA_G
 ClientSampleId : BHBS1

Tgt Ion:228 Resp: 351734

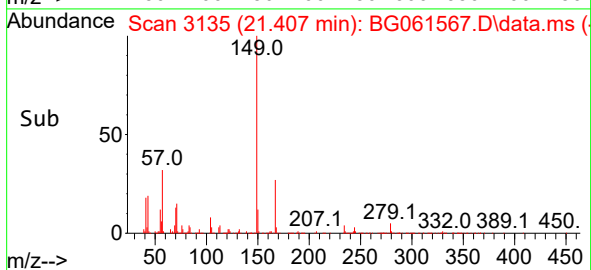
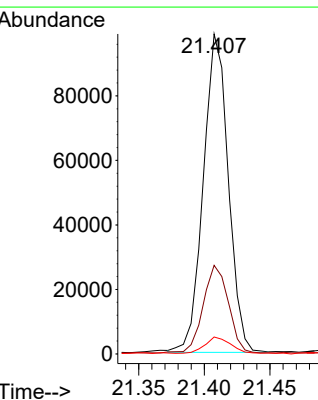
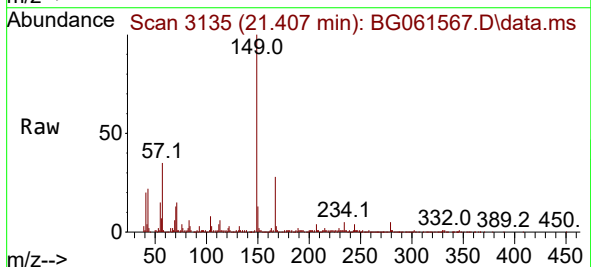
Ion	Ratio	Lower	Upper
228	100		
229	21.1	15.2	22.8
226	28.6	21.4	32.2

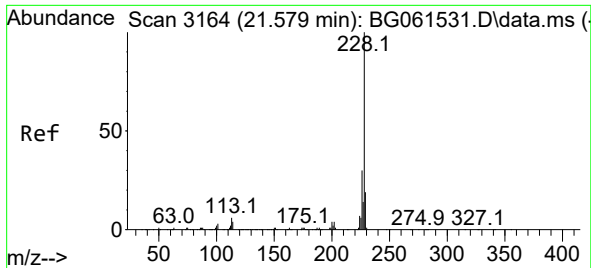


#86
 Bis(2-ethylhexyl)phthalate
 Concen: 20.762 ng/uI
 RT: 21.407 min Scan# 3135
 Delta R.T. 0.000 min
 Lab File: BG061567.D
 Acq: 8 Jun 2024 16:13

Tgt Ion:149 Resp: 130717

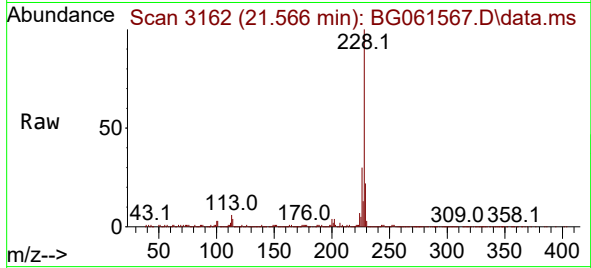
Ion	Ratio	Lower	Upper
149	100		
167	27.7	21.1	31.7
279	5.3	3.3	4.9



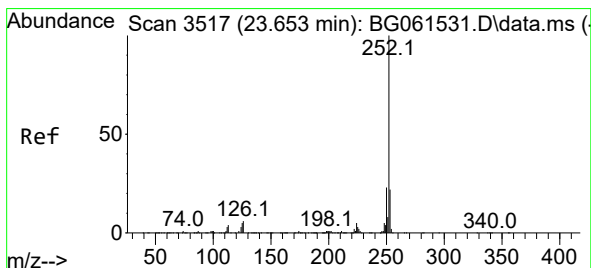
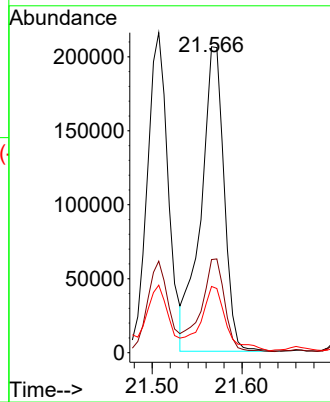
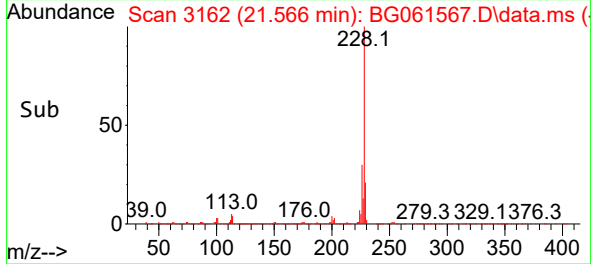


#87
 Chrysene
 Concen: 30.079 ng/u1
 RT: 21.566 min Scan# 3162
 Delta R.T. -0.000 min
 Lab File: BG061567.D
 Acq: 8 Jun 2024 16:13

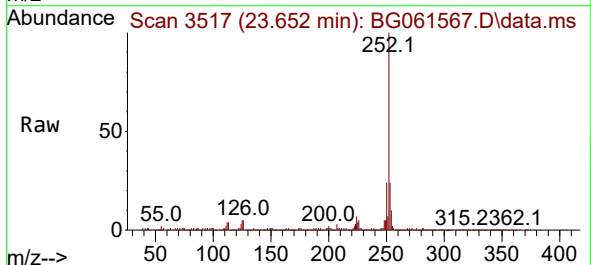
Instrument : BNA_G
 ClientSampleId : BHBS1



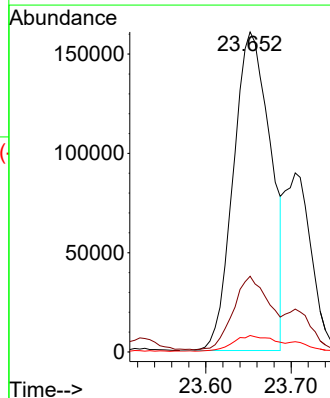
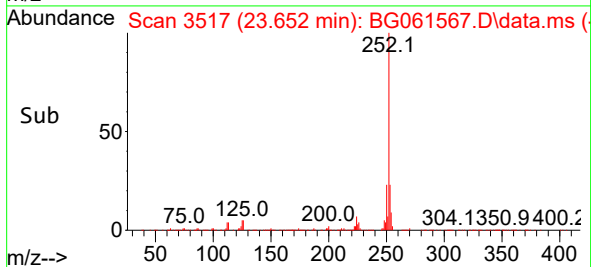
Tgt Ion:228 Resp: 370074
 Ion Ratio Lower Upper
 228 100
 226 30.4 23.4 35.0
 229 21.6 15.4 23.2

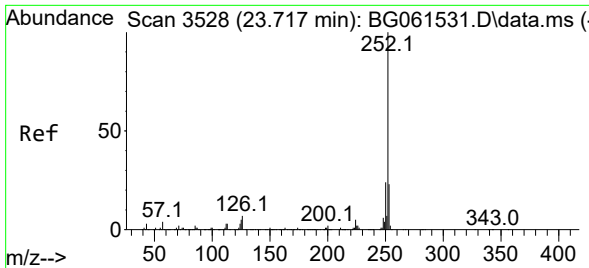


#90
 Benzo(b)fluoranthene
 Concen: 36.003 ng/u1
 RT: 23.652 min Scan# 3517
 Delta R.T. 0.018 min
 Lab File: BG061567.D
 Acq: 8 Jun 2024 16:13



Tgt Ion:252 Resp: 487711
 Ion Ratio Lower Upper
 252 100
 253 23.7 17.8 26.8
 125 5.2 4.6 6.8



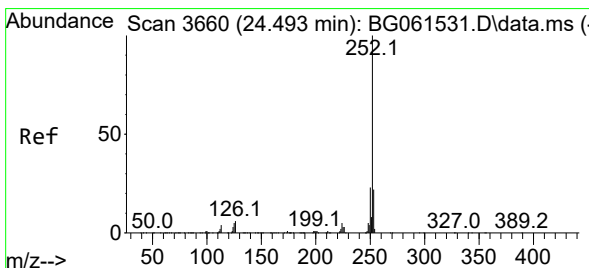
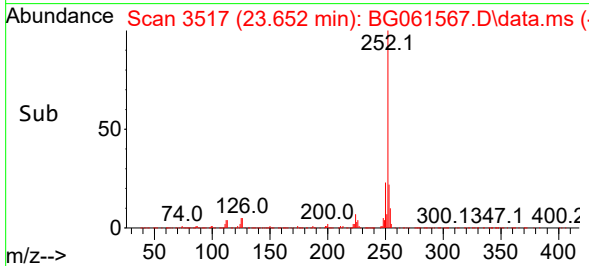
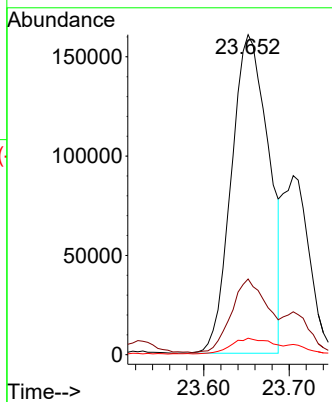
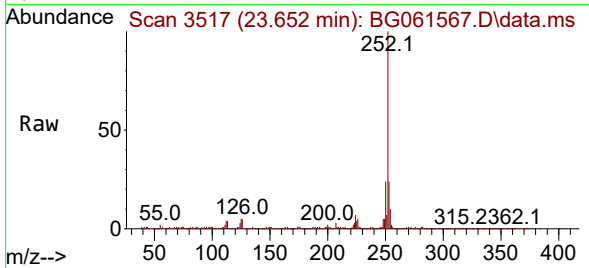


#91
 Benzo(k)fluoranthene
 Concen: 35.465 ng/u1
 RT: 23.652 min Scan# 31
 Delta R.T. -0.047 min
 Lab File: BG061567.D
 Acq: 8 Jun 2024 16:13

Instrument :
 BNA_G
 ClientSampleId :
 BHBS1

Tgt Ion:252 Resp: 487711

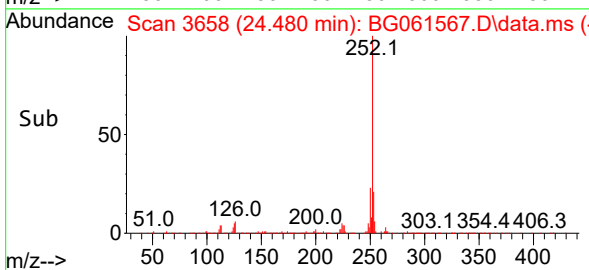
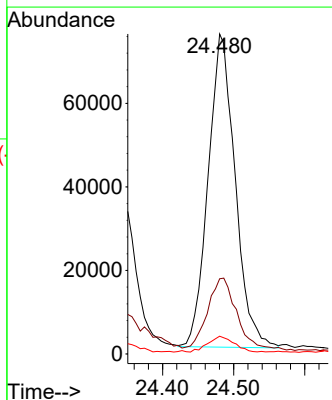
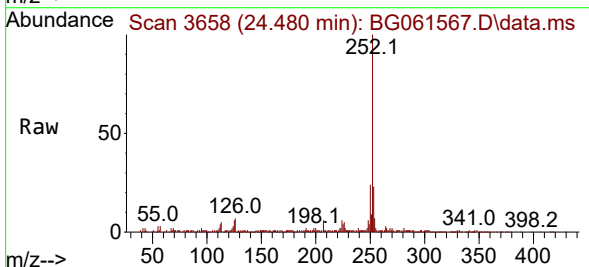
Ion	Ratio	Lower	Upper
252	100		
253	23.7	16.0	24.0
125	5.2	4.3	6.5

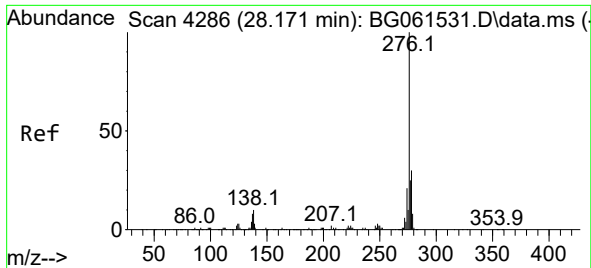


#93
 Benzo(a)pyrene
 Concen: 15.365 ng/u1
 RT: 24.480 min Scan# 3658
 Delta R.T. 0.012 min
 Lab File: BG061567.D
 Acq: 8 Jun 2024 16:13

Tgt Ion:252 Resp: 197651

Ion	Ratio	Lower	Upper
252	100		
253	23.5	16.4	24.6
125	5.5	4.3	6.5

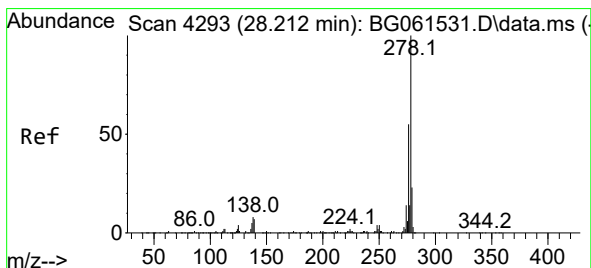
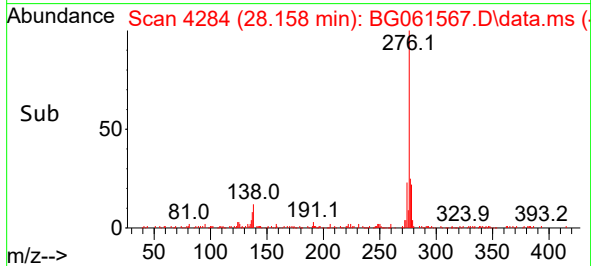
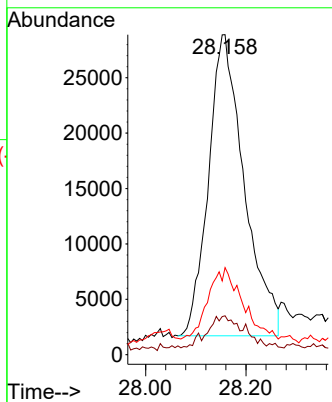
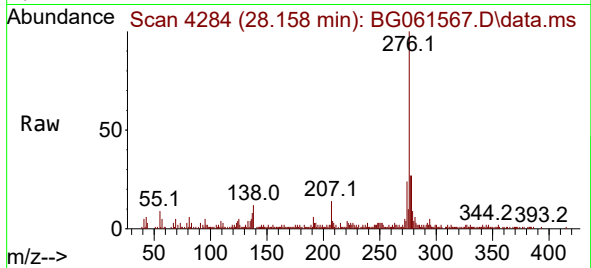




#94
 Indeno(1,2,3-cd)pyrene
 Concen: 8.651 ng/ul
 RT: 28.158 min Scan# 4284
 Delta R.T. 0.023 min
 Lab File: BG061567.D
 Acq: 8 Jun 2024 16:13

Instrument :
 BNA_G
 ClientSampleId :
 BHBS1

Tgt Ion	Resp	Lower	Upper
276	134565		
138	12.2	8.6	13.0
277	27.2	19.7	29.5



#95
 Dibenzo(a,h)anthracene
 Concen: 3.450 ng/ul
 RT: 28.188 min Scan# 4289
 Delta R.T. 0.018 min
 Lab File: BG061567.D
 Acq: 8 Jun 2024 16:13

Tgt Ion	Resp	Lower	Upper
278	44250		
139	14.0	6.4	9.6#
279	34.7	19.9	29.9#

