

Data Path : Z:\svoasrv\HPCHEM1\BNA_G\Data\BG060724\
 Data File : BG061569.D
 Acq On : 8 Jun 2024 17:35
 Operator : MA/JU
 Sample : P2647-09
 Misc :
 ALS Vial : 8 Sample Multiplier: 1

Instrument :
 BNA_G
 ClientSampleId :
 BHBS3

Quant Time: Jun 09 23:02:17 2024
 Quant Method : Z:\svoasrv\HPCHEM1\BNA_G\Methods\SFAM-EPA-BG052124.MA.M
 Quant Title : SVOA CALIBRATION
 QLast Update : Thu Jun 06 12:15:45 2024
 Response via : Initial Calibration

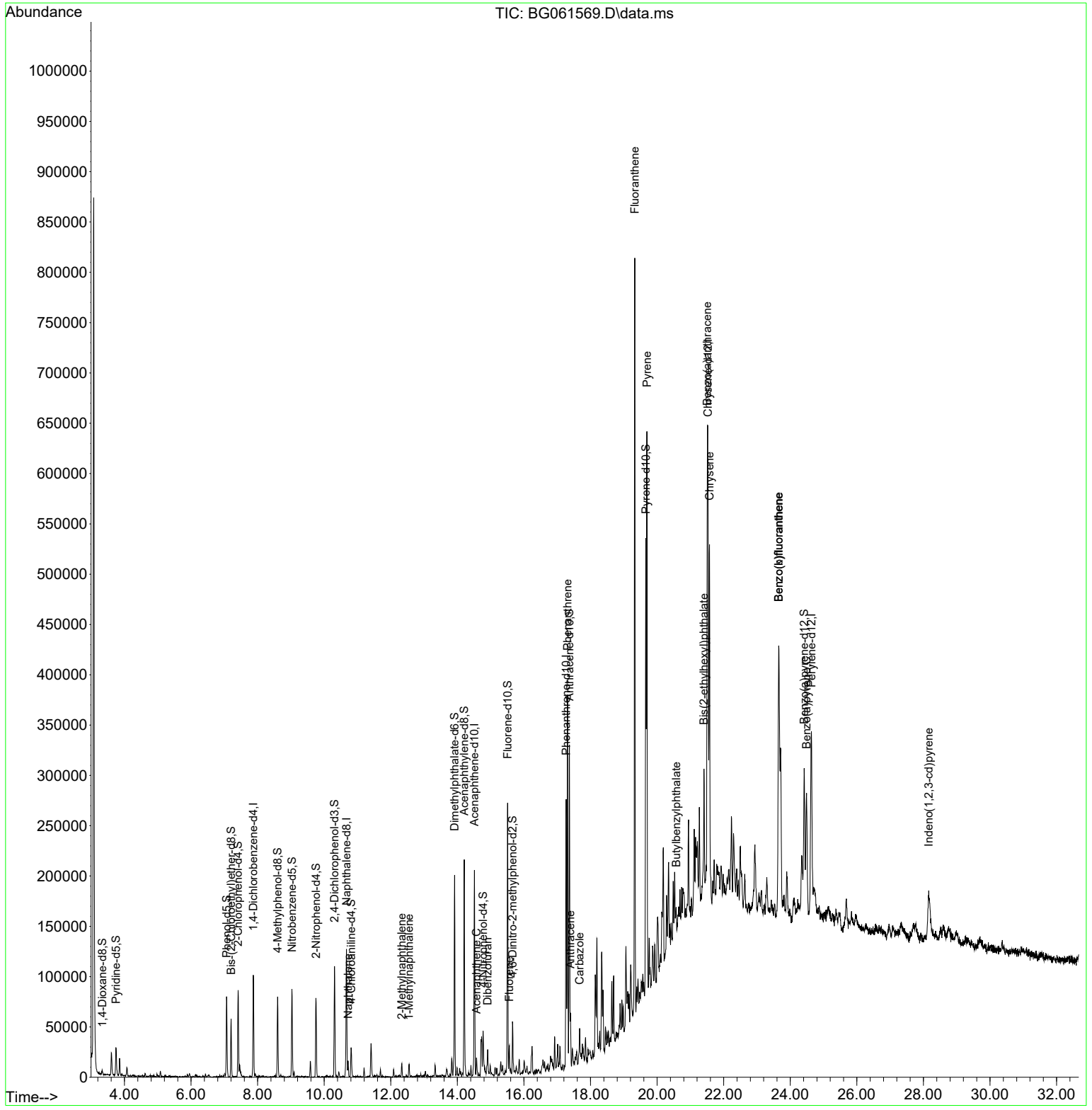
Compound	R.T.	QIon	Response	Conc	Units	Dev(Min)
Internal Standards						
1) 1,4-Dichlorobenzene-d4	7.871	152	26730	20.000	ng/ul	0.00
20) Naphthalene-d8	10.668	136	100087	20.000	ng/ul	0.00
38) Acenaphthene-d10	14.510	164	73239	20.000	ng/ul	0.00
64) Phenanthrene-d10	17.266	188	171971	20.000	ng/ul	0.00
79) Chrysene-d12	21.526	240	187549	20.000	ng/ul	# 0.00
88) Perylene-d12	24.634	264	207079	20.000	ng/ul	0.02
System Monitoring Compounds						
3) 1,4-Dioxane-d8	3.335	96	1740	3.643	ng/uL	-0.02
4) Pyridine-d5	3.746	84	13426	7.901	ng/ul	-0.02
7) Phenol-d5	7.072	99	38917	17.729	ng/ul	0.00
9) Bis-(2-Chloroethyl)eth...	7.201	67	25290	18.330	ng/ul	-0.01
11) 2-Chlorophenol-d4	7.413	132	36272	22.328	ng/ul	0.00
15) 4-Methylphenol-d8	8.600	113	27798	14.852	ng/ul	0.00
21) Nitrobenzene-d5	9.034	128	17949	23.292	ng/ul	0.00
24) 2-Nitrophenol-d4	9.757	143	20934	23.212	ng/ul	0.00
28) 2,4-Dichlorophenol-d3	10.309	165	40226	22.879	ng/ul	0.00
31) 4-Chloroaniline-d4	10.809	131	14427	6.272	ng/ul	0.00
46) Dimethylphthalate-d6	13.917	166	126423	22.257	ng/ul	0.00
49) Acenaphthylene-d8	14.205	160	138284	23.416	ng/ul	0.00
54) 4-Nitrophenol-d4	14.775	143	9953	14.173	ng/ul	0.02
60) Fluorene-d10	15.509	176	111082	22.651	ng/ul	0.00
65) 4,6-Dinitro-2-methylph...	15.656	200	11366	10.928	ng/ul	0.00
73) Anthracene-d10	17.366	188	188530	24.867	ng/ul	0.00
81) Pyrene-d10	19.663	212	204218	21.207	ng/ul	0.00
92) Benzo(a)pyrene-d12	24.416	264	166491	16.724	ng/ul	0.02
Target Compounds						
30) Naphthalene	10.721	128	12181	2.306	ng/ul#	94
36) 2-Methylnaphthalene	12.330	142	6162	1.608	ng/ul	91
37) 1-Methylnaphthalene	12.548	142	5772	1.468	ng/ul#	91
52) Acenaphthene	14.575	153	7619	1.774	ng/ul	90
56) Dibenzofuran	14.910	168	9494	1.546	ng/ul	97
61) Fluorene	15.562	166	9822	1.848	ng/ul#	96
72) Phenanthrene	17.307	178	232760	27.886	ng/ul	99
74) Anthracene	17.395	178	32364	3.750	ng/ul	97
77) Carbazole	17.671	167	19033	2.711	ng/ul	98
80) Fluoranthene	19.328	202	475384	41.151	ng/ul	97
82) Pyrene	19.692	202	368500	30.731	ng/ul	97
83) Butylbenzylphthalate	20.574	149	4245	1.031	ng/ul	92
85) Benzo(a)anthracene	21.508	228	261992	20.245	ng/ul	97
86) Bis(2-ethylhexyl)phtha...	21.408	149	41324	6.777	ng/ul#	96
87) Chrysene	21.573	228	272978	22.909	ng/ul	96
90) Benzo(b)fluoranthene	23.653	252	350496	28.428	ng/ul	99
91) Benzo(k)fluoranthene	23.653	252	350496	28.003	ng/ul	95
93) Benzo(a)pyrene	24.487	252	135041	11.534	ng/ul	94
94) Indeno(1,2,3-cd)pyrene	28.159	276	85705	6.053	ng/ul#	91

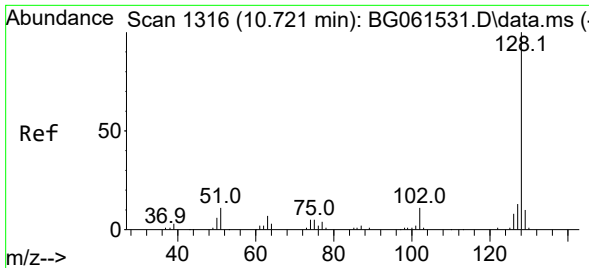
(#) = qualifier out of range (m) = manual integration (+) = signals summed

Data Path : Z:\svoasrv\HPCHEM1\BNA_G\Data\BG060724\
 Data File : BG061569.D
 Acq On : 8 Jun 2024 17:35
 Operator : MA/JU
 Sample : P2647-09
 Misc :
 ALS Vial : 8 Sample Multiplier: 1

Instrument :
 BNA_G
ClientSampleId :
 BHBS3

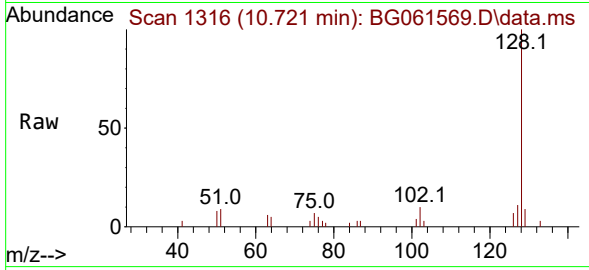
Quant Time: Jun 09 23:02:17 2024
 Quant Method : Z:\svoasrv\HPCHEM1\BNA_G\Methods\SFAM-EPA-BG052124.MA.M
 Quant Title : SVOA CALIBRATION
 QLast Update : Thu Jun 06 12:15:45 2024
 Response via : Initial Calibration



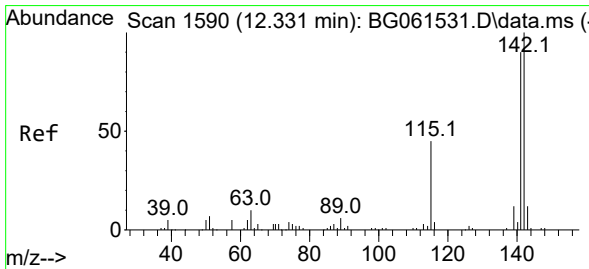
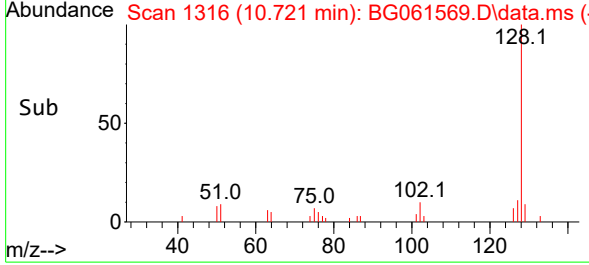
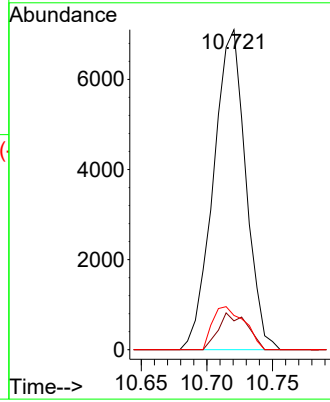


#30
 Naphthalene
 Concen: 2.306 ng/u1
 RT: 10.721 min Scan# 11
 Delta R.T. 0.001 min
 Lab File: BG061569.D
 Acq: 8 Jun 2024 17:35

Instrument :
 BNA_G
 ClientSampleId :
 BHBS3

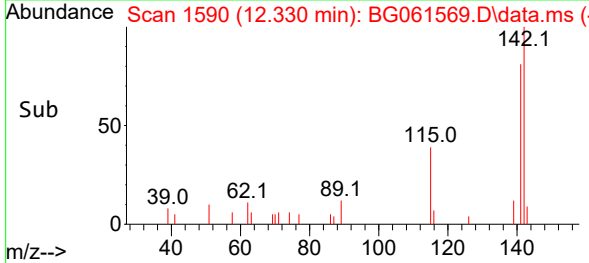
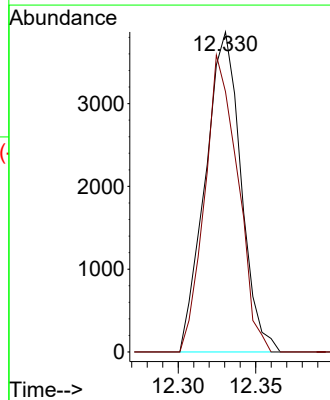
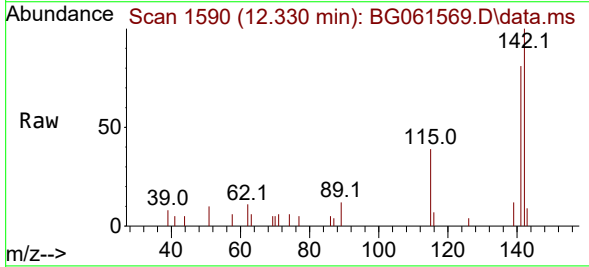


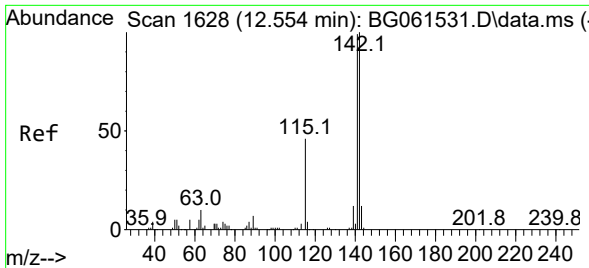
Tgt Ion:128 Resp: 12181
 Ion Ratio Lower Upper
 128 100
 129 9.0 8.6 12.8
 127 10.7 10.8 16.2#



#36
 2-Methylnaphthalene
 Concen: 1.608 ng/u1
 RT: 12.330 min Scan# 1590
 Delta R.T. 0.001 min
 Lab File: BG061569.D
 Acq: 8 Jun 2024 17:35

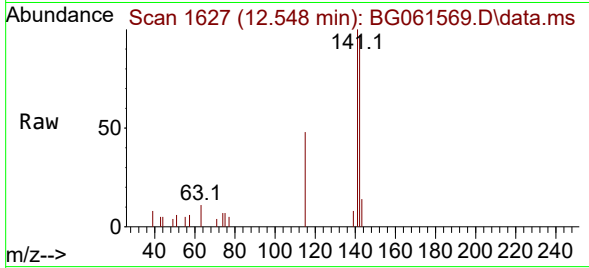
Tgt Ion:142 Resp: 6162
 Ion Ratio Lower Upper
 142 100
 141 81.3 72.2 108.2



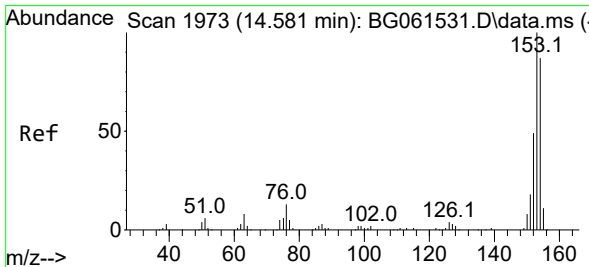
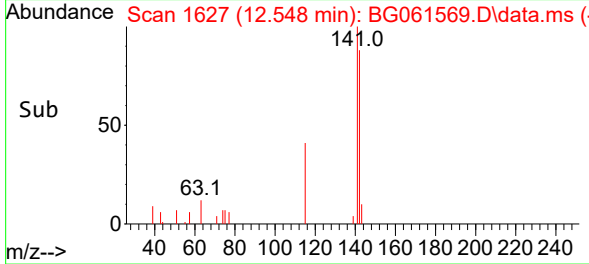
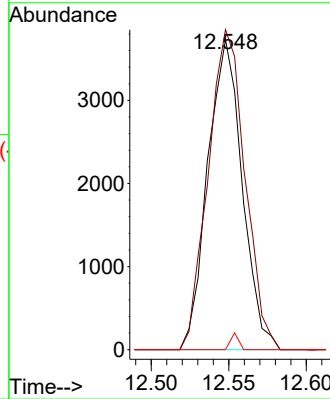


#37
 1-Methylnaphthalene
 Concen: 1.468 ng/ul
 RT: 12.548 min Scan# 10
 Delta R.T. 0.001 min
 Lab File: BG061569.D
 Acq: 8 Jun 2024 17:35

Instrument : BNA_G
 ClientSampleId : BHBS3

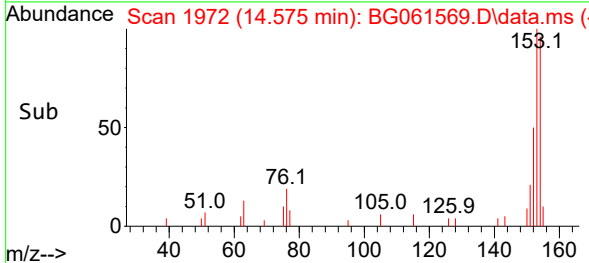
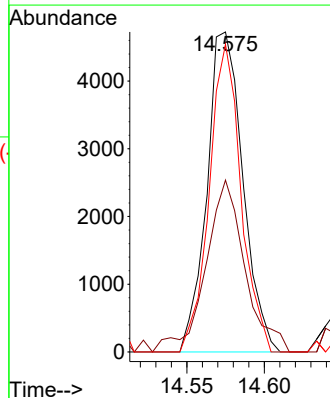
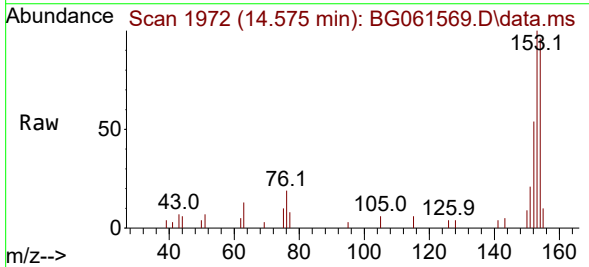


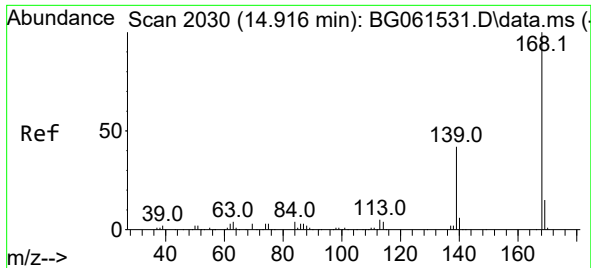
Tgt Ion:142 Resp: 5772
 Ion Ratio Lower Upper
 142 100
 141 103.1 75.5 113.3
 116 0.0 4.0 6.0#



#52
 Acenaphthene
 Concen: 1.774 ng/ul
 RT: 14.575 min Scan# 1972
 Delta R.T. 0.001 min
 Lab File: BG061569.D
 Acq: 8 Jun 2024 17:35

Tgt Ion:153 Resp: 7619
 Ion Ratio Lower Upper
 153 100
 152 53.7 37.8 56.8
 154 96.1 69.0 103.6

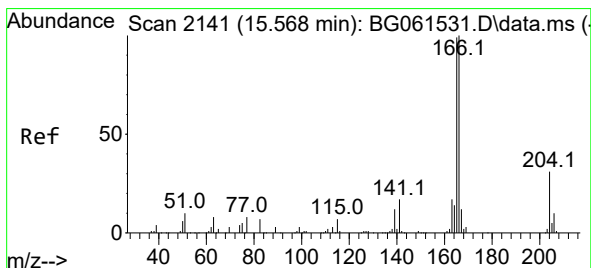
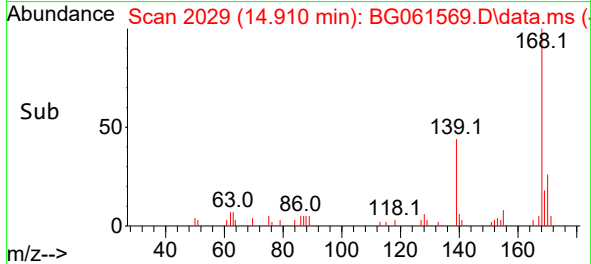
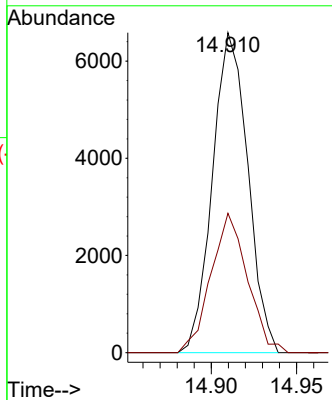
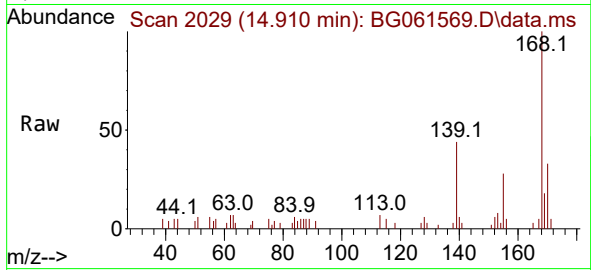




#56
 Dibenzofuran
 Concen: 1.546 ng/ul
 RT: 14.910 min Scan# 2030
 Delta R.T. 0.001 min
 Lab File: BG061569.D
 Acq: 8 Jun 2024 17:35

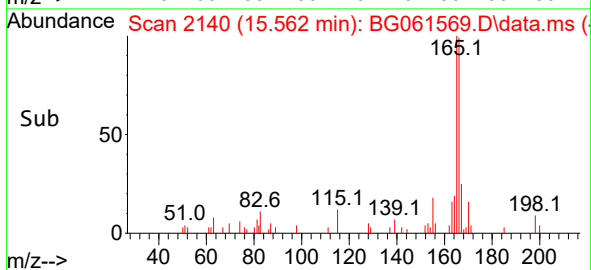
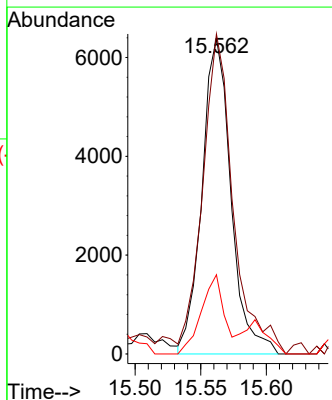
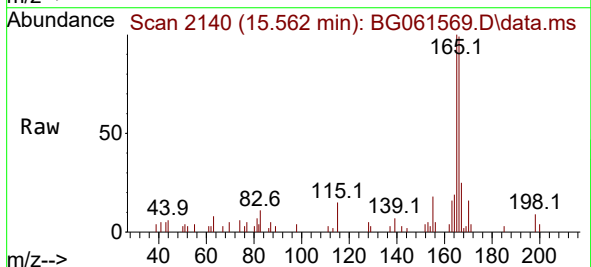
Instrument : BNA_G
 ClientSampleId : BHBS3

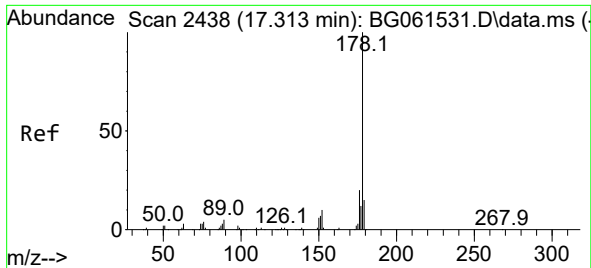
Tgt Ion:168 Resp: 9494
 Ion Ratio Lower Upper
 168 100
 139 43.6 33.4 50.2



#61
 Fluorene
 Concen: 1.848 ng/ul
 RT: 15.562 min Scan# 2140
 Delta R.T. 0.001 min
 Lab File: BG061569.D
 Acq: 8 Jun 2024 17:35

Tgt Ion:166 Resp: 9822
 Ion Ratio Lower Upper
 166 100
 165 101.4 81.8 122.8
 167 25.1 10.6 16.0#



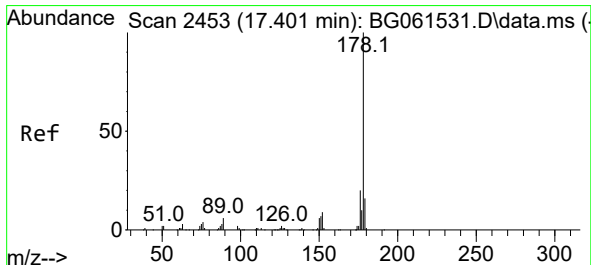
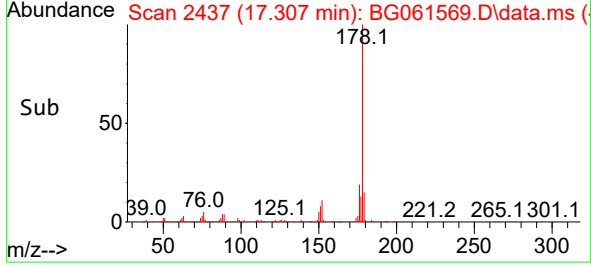
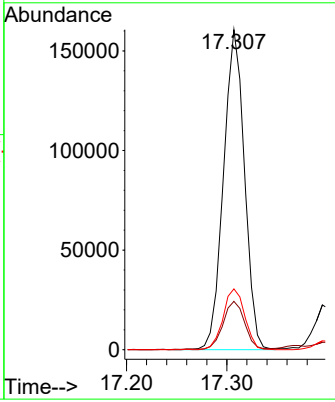
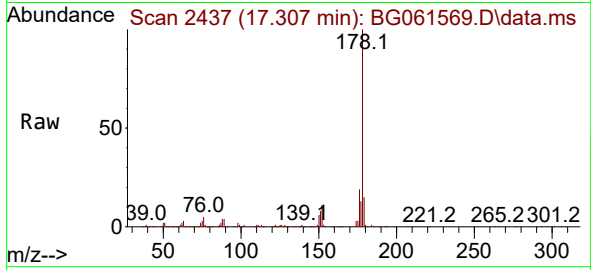


#72
 Phenanthrene
 Concen: 27.886 ng/u1
 RT: 17.307 min Scan# 2437
 Delta R.T. 0.001 min
 Lab File: BG061569.D
 Acq: 8 Jun 2024 17:35

Instrument : BNA_G
 ClientSampleId : BHBS3

Tgt Ion:178 Resp: 232760

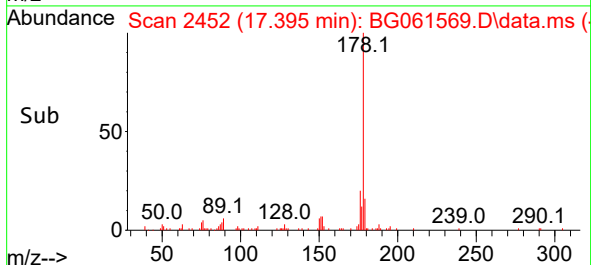
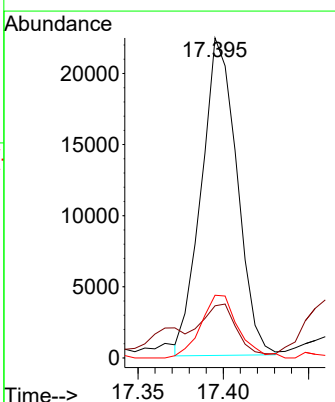
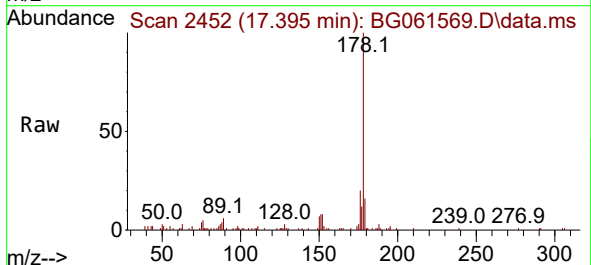
Ion	Ratio	Lower	Upper
178	100		
179	15.1	12.7	19.1
176	19.0	15.5	23.3

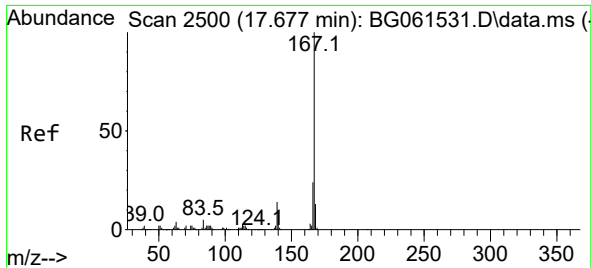


#74
 Anthracene
 Concen: 3.750 ng/u1
 RT: 17.395 min Scan# 2452
 Delta R.T. 0.001 min
 Lab File: BG061569.D
 Acq: 8 Jun 2024 17:35

Tgt Ion:178 Resp: 32364

Ion	Ratio	Lower	Upper
178	100		
179	16.3	11.8	17.6
176	19.6	14.9	22.3

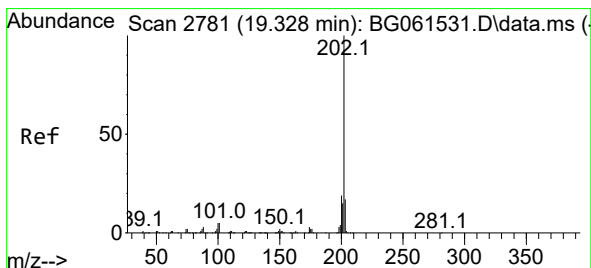
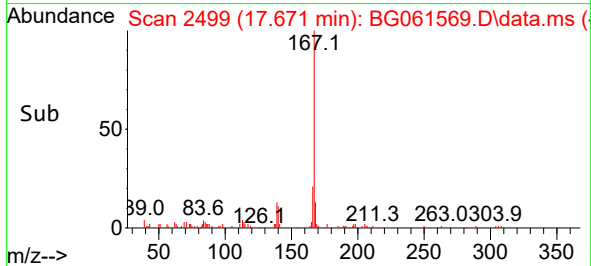
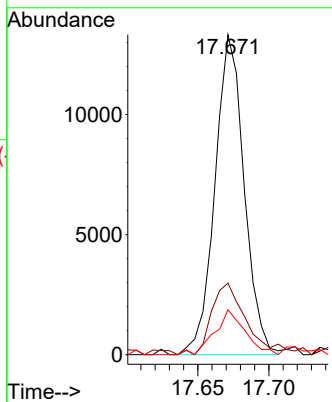
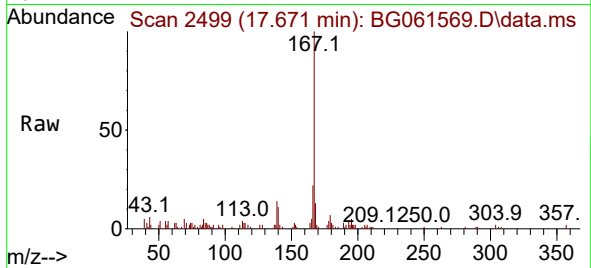




#77
 Carbazole
 Concen: 2.711 ng/ul
 RT: 17.671 min Scan# 2499
 Delta R.T. 0.001 min
 Lab File: BG061569.D
 Acq: 8 Jun 2024 17:35

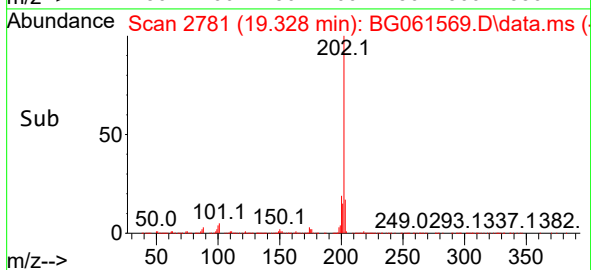
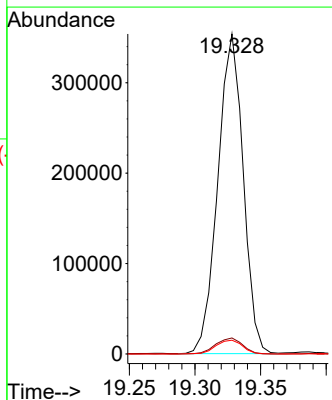
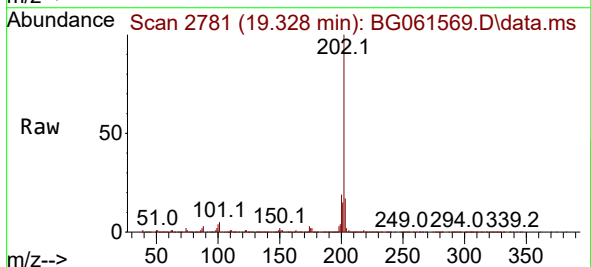
Instrument : BNA_G
 Client Sample Id : BHBS3

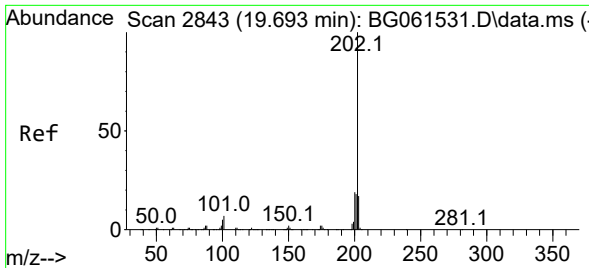
Tgt Ion	Resp	Lower	Upper
167	19033		
166	22.3	18.6	28.0
139	14.0	10.6	15.8



#80
 Fluoranthene
 Concen: 41.151 ng/ul
 RT: 19.328 min Scan# 2781
 Delta R.T. 0.006 min
 Lab File: BG061569.D
 Acq: 8 Jun 2024 17:35

Tgt Ion	Resp	Lower	Upper
202	475384		
202	100		
101	5.0	4.8	7.2
100	4.3	4.1	6.1



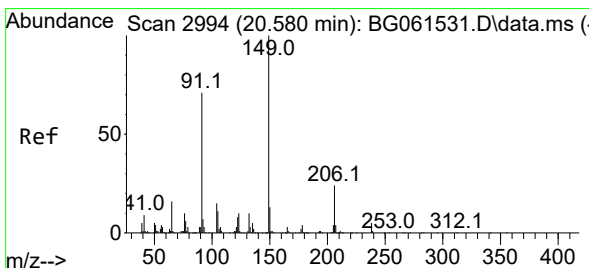
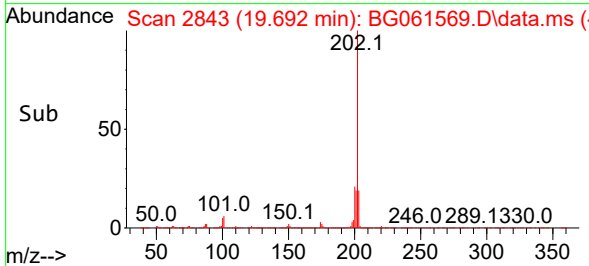
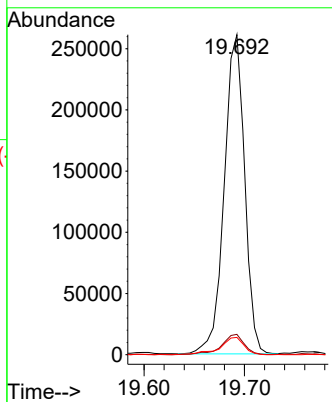
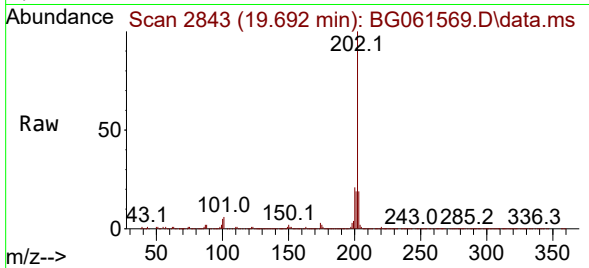


#82
 Pyrene
 Concen: 30.731 ng/uI
 RT: 19.692 min Scan# 2843
 Delta R.T. 0.006 min
 Lab File: BG061569.D
 Acq: 8 Jun 2024 17:35

Instrument : BNA_G
 ClientSampleId : BHBS3

Tgt Ion:202 Resp: 368500

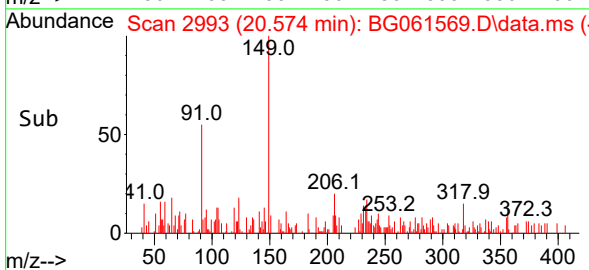
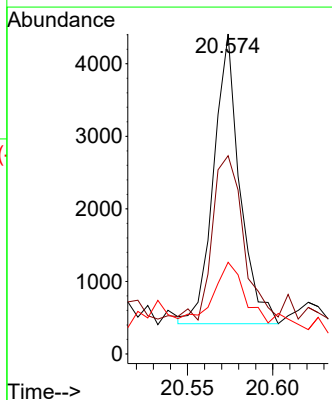
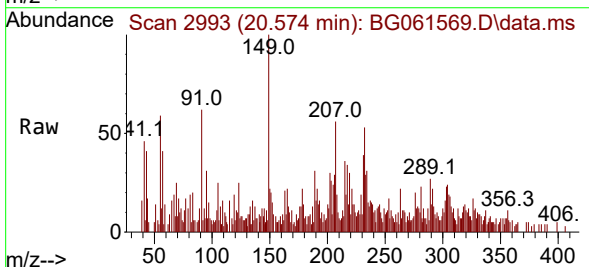
Ion	Ratio	Lower	Upper
202	100		
101	6.3	5.7	8.5
100	5.4	5.1	7.7

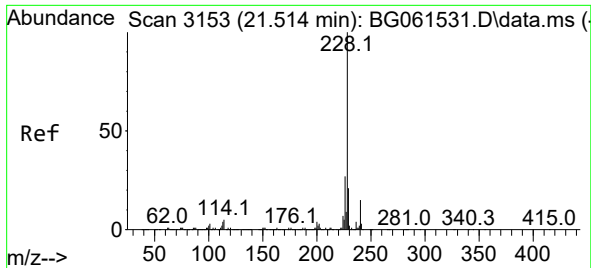


#83
 Butylbenzylphthalate
 Concen: 1.031 ng/uI
 RT: 20.574 min Scan# 2993
 Delta R.T. 0.001 min
 Lab File: BG061569.D
 Acq: 8 Jun 2024 17:35

Tgt Ion:149 Resp: 4245

Ion	Ratio	Lower	Upper
149	100		
91	62.0	54.8	82.2
206	28.7	19.4	29.0

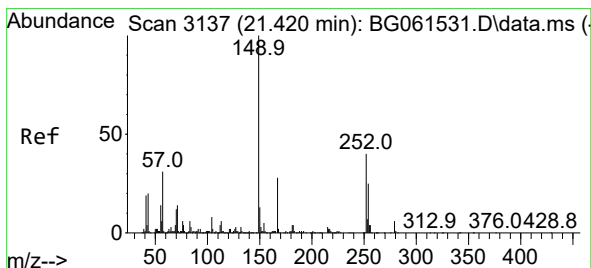
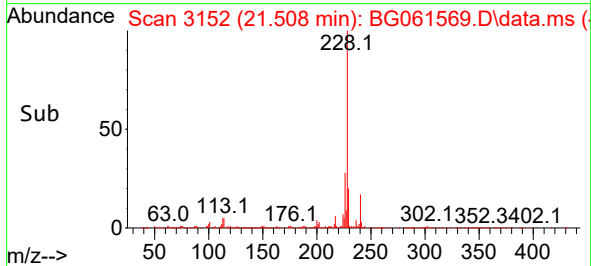
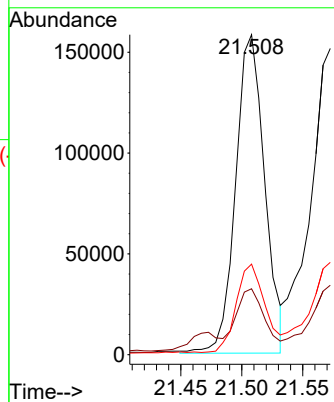
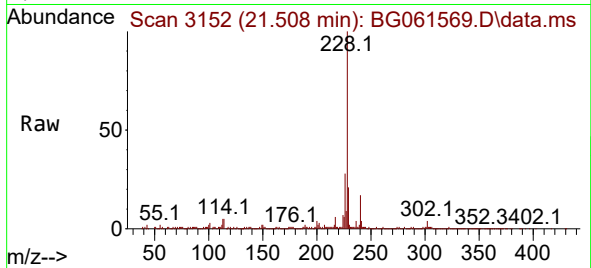




#85
 Benzo(a)anthracene
 Concen: 20.245 ng/ul
 RT: 21.508 min Scan# 3152
 Delta R.T. 0.007 min
 Lab File: BG061569.D
 Acq: 8 Jun 2024 17:35

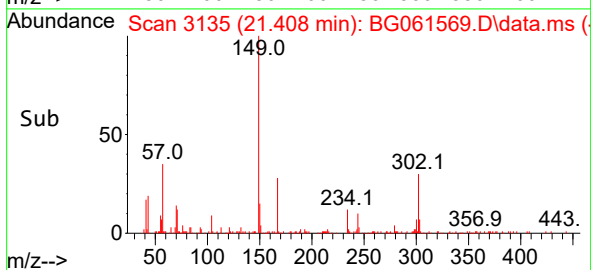
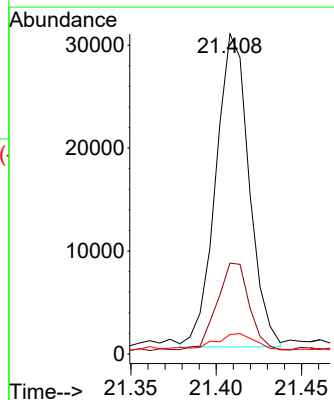
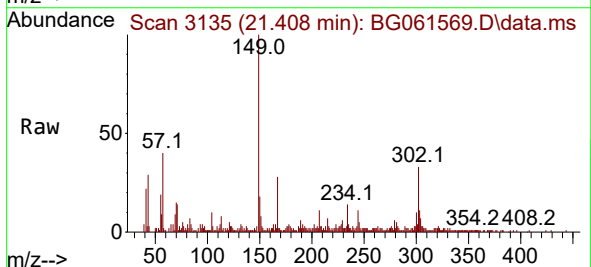
Instrument :
 BNA_G
 ClientSampleId :
 BHBS3

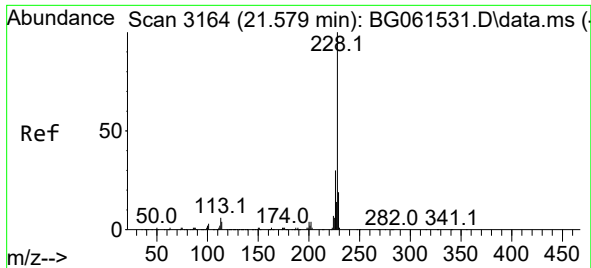
Tgt Ion:228 Resp: 261992
 Ion Ratio Lower Upper
 228 100
 229 20.6 15.2 22.8
 226 28.3 21.4 32.2



#86
 Bis(2-ethylhexyl)phthalate
 Concen: 6.777 ng/ul
 RT: 21.408 min Scan# 3135
 Delta R.T. 0.001 min
 Lab File: BG061569.D
 Acq: 8 Jun 2024 17:35

Tgt Ion:149 Resp: 41324
 Ion Ratio Lower Upper
 149 100
 167 28.4 21.1 31.7
 279 6.1 3.3 4.9#



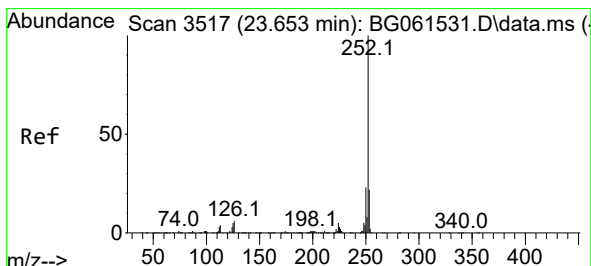
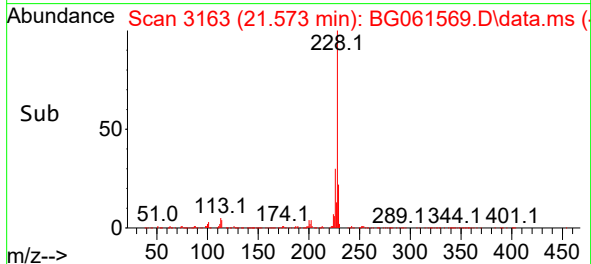
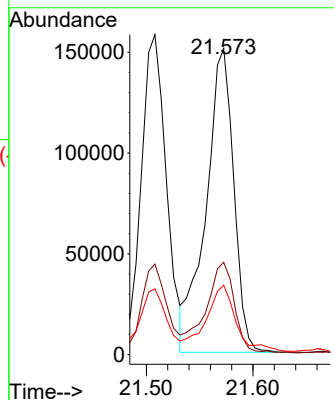
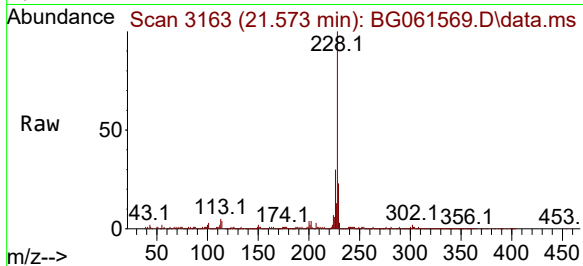


#87
 Chrysene
 Concen: 22.909 ng/u1
 RT: 21.573 min Scan# 3163
 Delta R.T. 0.006 min
 Lab File: BG061569.D
 Acq: 8 Jun 2024 17:35

Instrument : BNA_G
 ClientSampleId : BHBS3

Tgt Ion:228 Resp: 272978

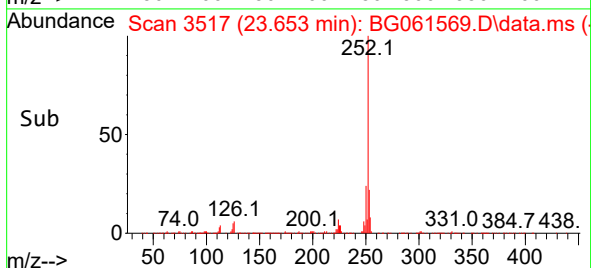
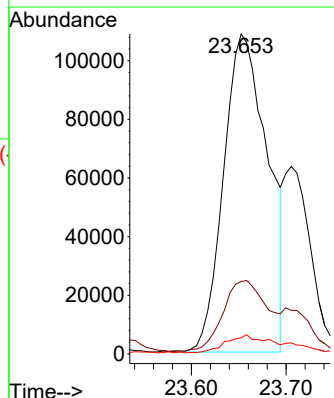
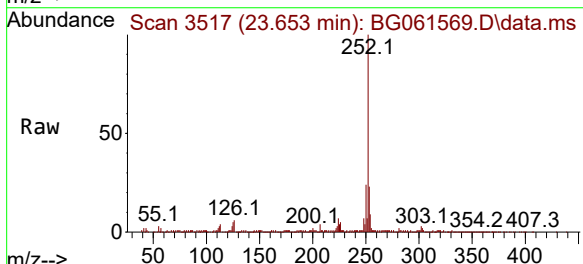
Ion	Ratio	Lower	Upper
228	100		
226	30.2	23.4	35.0
229	22.7	15.4	23.2

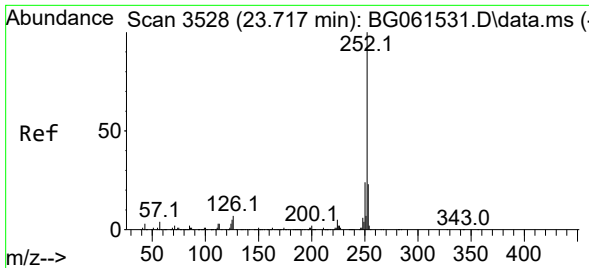


#90
 Benzo(b)fluoranthene
 Concen: 28.428 ng/u1
 RT: 23.653 min Scan# 3517
 Delta R.T. 0.018 min
 Lab File: BG061569.D
 Acq: 8 Jun 2024 17:35

Tgt Ion:252 Resp: 350496

Ion	Ratio	Lower	Upper
252	100		
253	22.6	17.8	26.8
125	5.0	4.6	6.8



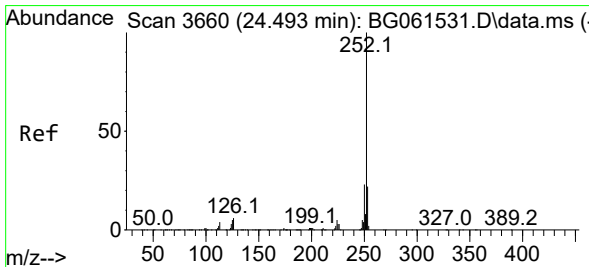
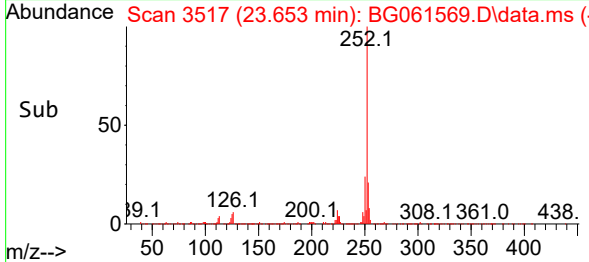
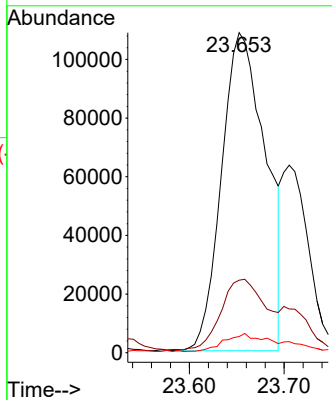
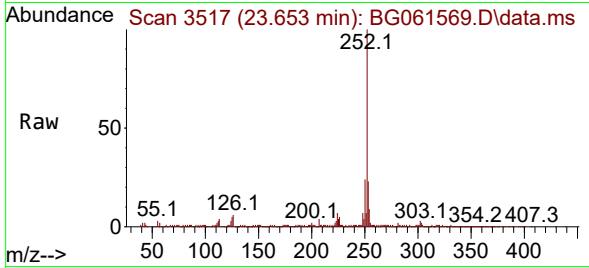


#91
 Benzo(k)fluoranthene
 Concen: 28.003 ng/u1
 RT: 23.653 min Scan# 31
 Delta R.T. -0.046 min
 Lab File: BG061569.D
 Acq: 8 Jun 2024 17:35

Instrument : BNA_G
 ClientSampleId : BHBS3

Tgt Ion:252 Resp: 350496

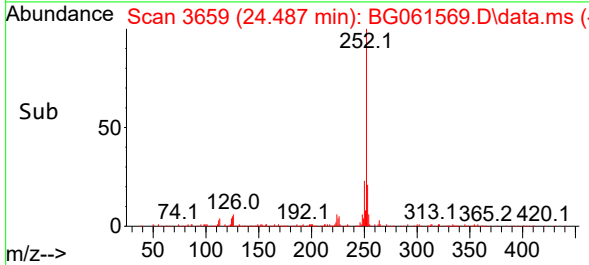
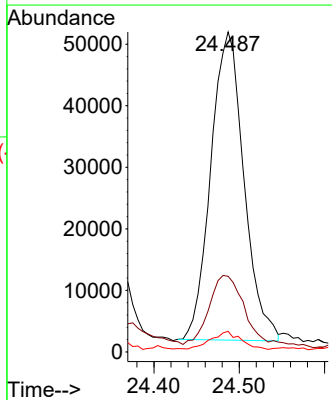
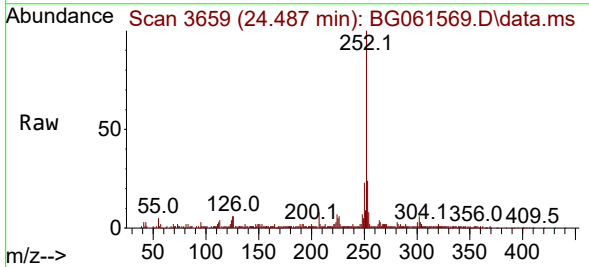
Ion	Ratio	Lower	Upper
252	100		
253	22.6	16.0	24.0
125	5.0	4.3	6.5

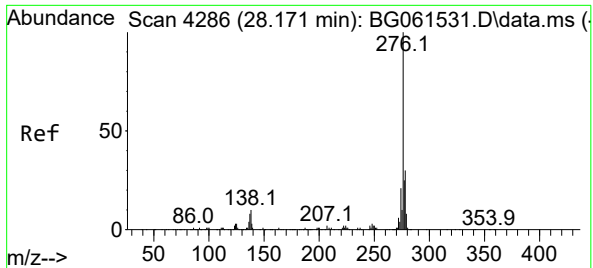


#93
 Benzo(a)pyrene
 Concen: 11.534 ng/u1
 RT: 24.487 min Scan# 3659
 Delta R.T. 0.018 min
 Lab File: BG061569.D
 Acq: 8 Jun 2024 17:35

Tgt Ion:252 Resp: 135041

Ion	Ratio	Lower	Upper
252	100		
253	23.6	16.4	24.6
125	6.4	4.3	6.5





#94
 Indeno(1,2,3-cd)pyrene
 Concen: 6.053 ng/ul
 RT: 28.159 min Scan# 41
 Delta R.T. 0.024 min
 Lab File: BG061569.D
 Acq: 8 Jun 2024 17:35

Instrument :
 BNA_G
 ClientSampleId :
 BHBS3

Tgt Ion:276 Resp: 85705

Ion	Ratio	Lower	Upper
276	100		
138	13.2	8.6	13.0#
277	29.3	19.7	29.5

