

Data Path : Z:\svoasrv\HPCHEM1\BNA_G\Data\BG060724\
 Data File : BG061549.D
 Acq On : 8 Jun 2024 1:50
 Operator : MA/JU
 Sample : P2640-09
 Misc :
 ALS Vial : 19 Sample Multiplier: 1

Instrument :
 BNA_G
 ClientSampleId :
 A4C23

Integration Parameters: LSCINT.P

Integrator: RTE
 Smoothing : OFF Filtering: 5
 Sampling : 1 Min Area: 0.1 % of largest Peak
 Start Thrs: 0.2 Max Peaks: 100
 Stop Thrs : 0 Peak Location: TOP

If leading or trailing edge < 100 prefer < Baseline drop else tangent >
 Peak separation: 5

Method : Z:\svoasrv\HPCHEM1\BNA_G\Methods\SFAM-EPA-BG052124.MA.M
 Title : SVOA CALIBRATION

Signal : TIC: BG061549.D\data.ms

peak #	R.T. min	first scan	max scan	last scan	PK TY	peak height	corr. area	corr. % max.	% of total
1	3.070	8	14	31	rVB	183904	338869	49.07%	4.653%
2	3.334	54	59	63	rVB4	3640	6698	0.97%	0.092%
3	3.370	63	65	68	rVB3	1154	1257	0.18%	0.017%
4	3.599	103	104	109	rBV3	1047	1605	0.23%	0.022%
5	3.740	123	128	142	rVB	63713	115812	16.77%	1.590%
6	4.069	181	184	188	rBV3	1771	1819	0.26%	0.025%
7	4.186	202	204	209	rBV4	882	1188	0.17%	0.016%
8	4.263	216	217	221	rBV3	1002	1249	0.18%	0.017%
9	4.380	234	237	240	rBV3	993	1277	0.18%	0.018%
10	5.955	502	505	509	rVB3	978	1256	0.18%	0.017%
11	7.065	687	694	702	rBV	89057	154429	22.36%	2.120%
12	7.200	711	717	726	rVB	57950	92442	13.39%	1.269%
13	7.412	746	753	759	rBV	87516	141276	20.46%	1.940%
14	7.870	825	831	838	rBV	91176	150076	21.73%	2.060%
15	8.599	948	955	963	rVB	89671	152643	22.11%	2.096%
16	9.028	1021	1028	1036	rVB2	84786	147856	21.41%	2.030%
17	9.445	1094	1099	1102	rVB	1026	1281	0.19%	0.018%
18	9.750	1145	1151	1158	rVB	80846	135317	19.60%	1.858%
19	10.308	1239	1246	1256	rBV	108140	189807	27.49%	2.606%
20	10.667	1300	1307	1314	rBV	120038	202150	29.27%	2.775%
21	10.802	1323	1330	1340	rBB	99618	176468	25.56%	2.423%
22	11.407	1431	1433	1436	rBV	1060	1045	0.15%	0.014%
23	12.253	1573	1577	1581	rBV3	1629	2451	0.35%	0.034%
24	13.328	1755	1760	1764	rBB3	1196	2233	0.32%	0.031%
25	13.405	1767	1773	1779	rVB3	3426	5645	0.82%	0.078%
26	13.916	1854	1860	1866	rBV	219384	304234	44.06%	4.177%
27	14.204	1902	1909	1917	rVB2	234133	344635	49.91%	4.732%
28	14.509	1954	1961	1968	rBV	196186	290996	42.14%	3.995%
29	14.762	1998	2004	2017	rBV	51765	104125	15.08%	1.430%
30	15.508	2124	2131	2138	rBV	311194	447656	64.83%	6.146%
31	15.655	2150	2156	2169	rBV	70483	110098	15.94%	1.512%
32	15.737	2169	2170	2174	rVB2	1390	1085	0.16%	0.015%
33	16.495	2295	2299	2303	rBV2	2716	3599	0.52%	0.049%
34	16.536	2303	2306	2312	rVB2	2908	3334	0.48%	0.046%
35	16.654	2324	2326	2329	rVB2	1285	1056	0.15%	0.014%
36	16.842	2355	2358	2365	rBV3	2366	2672	0.39%	0.037%

Data Path : Z:\svoasrv\HPCHEM1\BNA_G\Data\BG060724\
 Data File : BG061549.D
 Acq On : 8 Jun 2024 1:50
 Operator : MA/JU
 Sample : P2640-09
 Misc :
 ALS Vial : 19 Sample Multiplier: 1

Instrument :
 BNA_G
 ClientSampleId :
 A4C23

Integration Parameters: LSCINT.P

Integrator: RTE
 Smoothing : OFF
 Sampling : 1
 Start Thrs: 0.2
 Stop Thrs : 0

Filtering: 5
 Min Area: 0.1 % of largest Peak
 Max Peaks: 100
 Peak Location: TOP

If leading or trailing edge < 100 prefer < Baseline drop else tangent >
 Peak separation: 5

Method : Z:\svoasrv\HPCHEM1\BNA_G\Methods\SFAM-EPA-BG052124.MA.M
 Title : SVOA CALIBRATION

37	17.018	2385	2388	2390	rBV	1047	1127	0.16%	0.015%
38	17.159	2408	2412	2415	rBV2	3295	3564	0.52%	0.049%
39	17.265	2423	2430	2436	rBV	265793	397912	57.62%	5.463%
40	17.318	2436	2439	2441	rVV	9876	11852	1.72%	0.163%
41	17.359	2441	2446	2453	rVV	324230	498551	72.20%	6.845%
42	17.424	2453	2457	2461	rVV	7842	9566	1.39%	0.131%
43	17.623	2484	2491	2496	rBV2	7093	10081	1.46%	0.138%
44	17.665	2496	2498	2500	rVV	1540	1167	0.17%	0.016%
45	17.712	2502	2506	2507	rVB3	1211	1201	0.17%	0.016%
46	17.923	2537	2542	2546	rVV2	8770	11796	1.71%	0.162%
47	17.976	2546	2551	2552	rBV	9174	10731	1.55%	0.147%
48	17.994	2552	2554	2559	rVB	8931	10813	1.57%	0.148%
49	18.046	2559	2563	2569	rBV	9562	12375	1.79%	0.170%
50	18.158	2578	2582	2591	rBV2	21188	33130	4.80%	0.455%
51	18.352	2610	2615	2618	rVV2	6509	8136	1.18%	0.112%
52	18.458	2629	2633	2634	rVB2	1405	1675	0.24%	0.023%
53	18.499	2636	2640	2642	rVB4	1958	2091	0.30%	0.029%
54	18.622	2658	2661	2666	rBV	6716	8905	1.29%	0.122%
55	18.675	2668	2670	2673	rVB2	1205	1142	0.17%	0.016%
56	19.128	2746	2747	2750	rBV3	1314	1304	0.19%	0.018%
57	19.216	2758	2762	2769	rVB8	5295	11862	1.72%	0.163%
58	19.298	2769	2776	2777	rBV4	6004	8117	1.18%	0.111%
59	19.321	2777	2780	2782	rVB4	1714	2034	0.29%	0.028%
60	19.398	2791	2793	2795	rBV	1425	1259	0.18%	0.017%
61	19.433	2795	2799	2800	rBV2	983	1334	0.19%	0.018%
62	19.527	2812	2815	2817	rVB4	1688	1354	0.20%	0.019%
63	19.556	2817	2820	2821	rBV4	1360	1654	0.24%	0.023%
64	19.580	2821	2824	2826	rVV3	1898	1823	0.26%	0.025%
65	19.656	2831	2837	2845	rBV	460954	629309	91.14%	8.640%
66	19.827	2865	2866	2868	rBV2	2736	1678	0.24%	0.023%
67	19.938	2883	2885	2887	rBV3	1889	1067	0.15%	0.015%
68	19.974	2887	2891	2892	rBV4	2802	2527	0.37%	0.035%
69	20.026	2898	2900	2901	rBV2	1406	1088	0.16%	0.015%
70	20.120	2912	2916	2919	rBV5	2850	3927	0.57%	0.054%
71	20.156	2919	2922	2923	rBV3	3795	4140	0.60%	0.057%
72	20.391	2960	2962	2964	rVB2	2436	1945	0.28%	0.027%
73	20.420	2964	2967	2969	rVB4	3096	3536	0.51%	0.049%
74	20.461	2972	2974	2975	rBV2	2500	1850	0.27%	0.025%
75	20.479	2975	2977	2981	rBV5	2564	3909	0.57%	0.054%
76	20.632	2998	3003	3004	rBV5	4453	6115	0.89%	0.084%

Data Path : Z:\svoasrv\HPCHEM1\BNA_G\Data\BG060724\
 Data File : BG061549.D
 Acq On : 8 Jun 2024 1:50
 Operator : MA/JU
 Sample : P2640-09
 Misc :
 ALS Vial : 19 Sample Multiplier: 1

Instrument :
 BNA_G
 ClientSampleId :
 A4C23

Integration Parameters: LSCINT.P

Integrator: RTE
 Smoothing : OFF Filtering: 5
 Sampling : 1 Min Area: 0.1 % of largest Peak
 Start Thrs: 0.2 Max Peaks: 100
 Stop Thrs : 0 Peak Location: TOP

If leading or trailing edge < 100 prefer < Baseline drop else tangent >
 Peak separation: 5

Method : Z:\svoasrv\HPCHEM1\BNA_G\Methods\SFAM-EPA-BG052124.MA.M
 Title : SVOA CALIBRATION

77	20.878	3044	3045	3047	rBV3	4402	1896	0.27%	0.026%
78	21.178	3092	3096	3106	rBV3	37017	75848	10.98%	1.041%
79	21.519	3149	3154	3162	rVB	291604	472170	68.38%	6.483%
80	21.707	3183	3186	3187	rBV3	8411	7142	1.03%	0.098%
81	22.030	3239	3241	3242	rBV2	5072	2582	0.37%	0.035%
82	22.183	3265	3267	3268	rBV2	4996	3967	0.57%	0.054%
83	22.947	3395	3397	3403	rVB7	12787	17607	2.55%	0.242%
84	23.205	3438	3441	3443	rBV3	5290	6390	0.93%	0.088%
85	23.599	3506	3508	3509	rVB2	4458	2205	0.32%	0.030%
86	23.710	3524	3527	3535	rVB6	15052	32112	4.65%	0.441%
87	24.051	3583	3585	3588	rBV4	4744	3568	0.52%	0.049%
88	24.410	3637	3646	3657	rVB2	258031	690521	100.00%	9.481%
89	24.621	3673	3682	3692	rBV2	197735	535344	77.53%	7.350%
90	25.367	3807	3809	3810	rBV	4365	2649	0.38%	0.036%
91	25.685	3859	3863	3870	rVB7	12583	31153	4.51%	0.428%
92	27.183	4117	4118	4120	rBV2	4712	3569	0.52%	0.049%
93	29.280	4473	4475	4480	rBV6	5024	5769	0.84%	0.079%
94	29.345	4484	4486	4488	rBV3	5081	3429	0.50%	0.047%
95	29.515	4513	4515	4517	rBV3	4989	5082	0.74%	0.070%
96	29.621	4531	4533	4534	rBV2	4602	2702	0.39%	0.037%
97	29.797	4561	4563	4564	rBV2	4303	2750	0.40%	0.038%
98	29.909	4580	4582	4583	rBV2	4670	2987	0.43%	0.041%
99	30.015	4598	4600	4602	rVB3	4475	1770	0.26%	0.024%
100	32.582	5036	5037	5038	rBV	6268	3083	0.45%	0.042%

Sum of corrected areas: 7283581

Data Path : Z:\svoasrv\HPCHEM1\BNA_G\Data\BG060724\
 Data File : BG061549.D
 Acq On : 8 Jun 2024 1:50
 Operator : MA/JU
 Sample : P2640-09
 Misc :
 ALS Vial : 19 Sample Multiplier: 1

Instrument :
 BNA_G
 ClientSampleId :
 A4C23

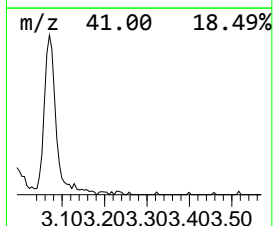
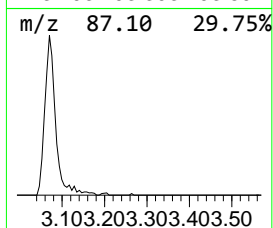
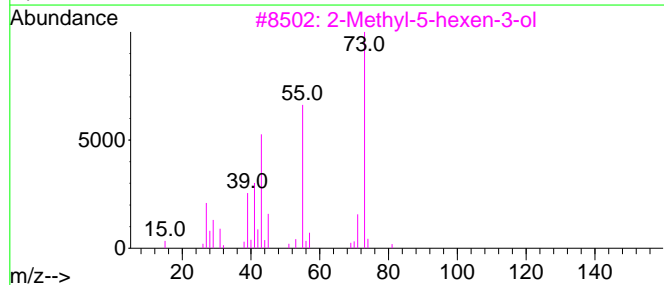
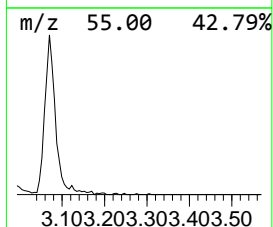
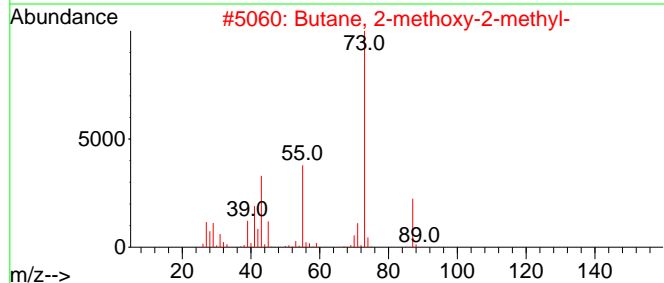
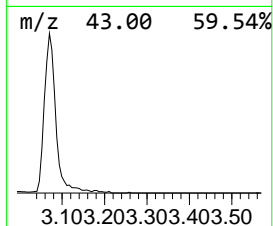
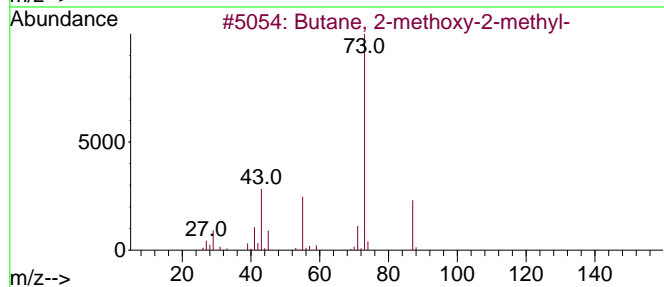
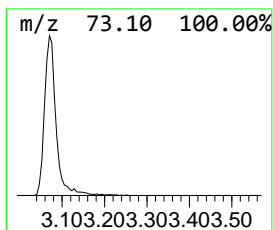
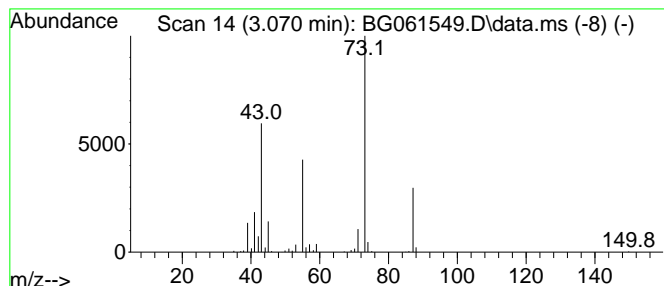
Quant Method : Z:\svoasrv\HPCHEM1\BNA_G\Methods\SFAM-EPA-BG052124.MA.M
 Quant Title : SVOA CALIBRATION

TIC Library : C:\DATABASE\NIST20.L
 TIC Integration Parameters: LSCINT.P

 Peak Number 1 Butane, 2-methoxy-2-methyl- Concentration Rank 1

R.T.	EstConc	Area	Relative to ISTD	R.T.
3.070	45.16 ng/ul	338869	1,4-Dichlorobenzene-d4	7.870

Hit#	of	5	Tentative ID	MW	MolForm	CAS#	Qual
1			Butane, 2-methoxy-2-methyl-	102	C6H14O	000994-05-8	83
2			Butane, 2-methoxy-2-methyl-	102	C6H14O	000994-05-8	78
3			2-Methyl-5-hexen-3-ol	114	C7H14O	032815-70-6	47
4			Butanoic acid, 2-hydroxy-2-methyl-	132	C6H12O3	032793-34-3	37
5			3-Hexanol, 2,4-dimethyl-	130	C8H18O	013432-25-2	36



Data Path : Z:\svoasrv\HPCHEM1\BNA_G\Data\BG060724\
 Data File : BG061549.D
 Acq On : 8 Jun 2024 1:50
 Operator : MA/JU
 Sample : P2640-09
 Misc :
 ALS Vial : 19 Sample Multiplier: 1

Instrument :
 BNA_G
 ClientSampleId :
 A4C23

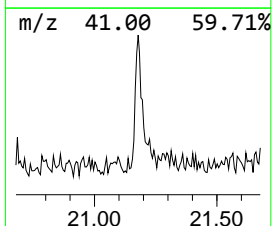
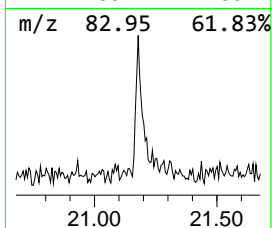
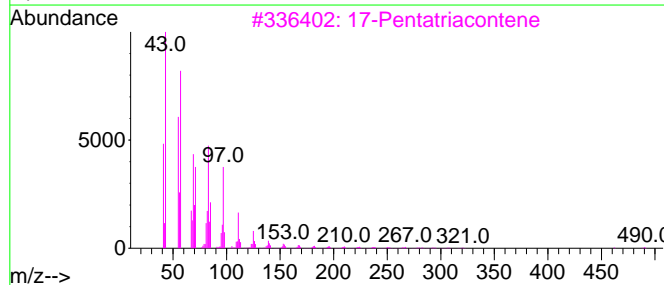
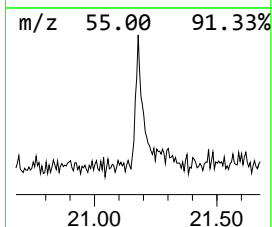
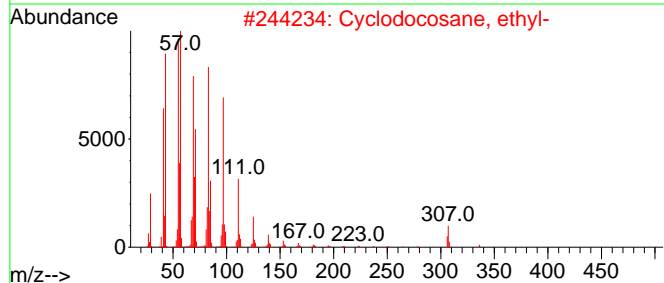
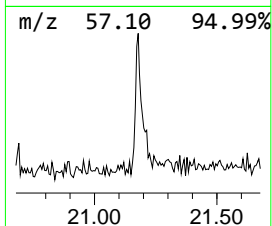
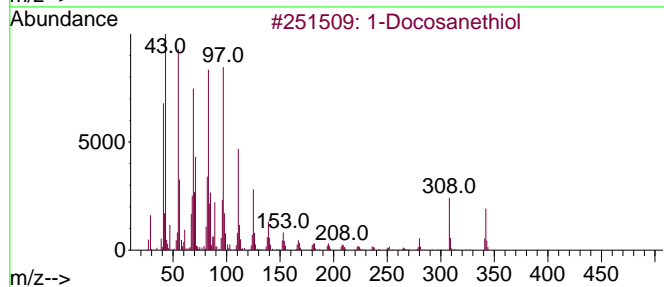
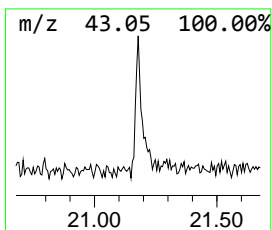
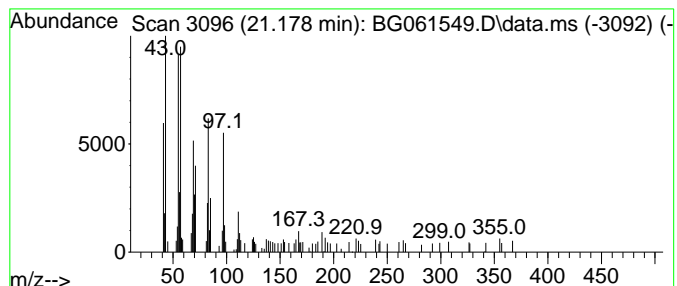
Quant Method : Z:\svoasrv\HPCHEM1\BNA_G\Methods\SFAM-EPA-BG052124.MA.M
 Quant Title : SVOA CALIBRATION

TIC Library : C:\DATABASE\NIST20.L
 TIC Integration Parameters: LSCINT.P

 Peak Number 2 1-Docosanethiol Concentration Rank 2

R.T.	EstConc	Area	Relative to ISTD	R.T.
21.178	3.21 ng/ul	75848	Chrysene-d12	21.519

Hit#	of 5	Tentative ID	MW	MolForm	CAS#	Qual
1		1-Docosanethiol	342	C22H46S	007773-83-3	83
2		Cyclodocosane, ethyl-	336	C24H48	1000151-22-6	74
3		17-Pentatriacontene	491	C35H70	006971-40-0	72
4		2- Bromopropionic acid, pentadec...	362	C18H35BrO2	1000292-44-2	62
5		n-Tetracosanol-1	354	C24H50O	000506-51-4	62



Data Path : Z:\svoasrv\HPCHEM1\BNA_G\Data\BG060724\
Data File : BG061549.D
Acq On : 8 Jun 2024 1:50
Operator : MA/JU
Sample : P2640-09
Misc :
ALS Vial : 19 Sample Multiplier: 1

Instrument :
BNA_G
ClientSampleId :
A4C23

Quant Method : Z:\svoasrv\HPCHEM1\BNA_G\Methods\SFAM-EPA-BG052124.MA.M
Quant Title : SVOA CALIBRATION

TIC Library : C:\DATABASE\NIST20.L
TIC Integration Parameters: LSCINT.P

TIC Top Hit name	RT	EstConc	Units	Response	--Internal Standard--			
					#	RT	Resp	Conc
Butane, 2-metho...	3.070	45.2	ng/u1	338869	1	7.870	150076	20.0
1-Docosanethiol	21.178	3.2	ng/u1	75848	5	21.519	472170	20.0