

Data Path : Z:\SVOASRV\HPCHEM1\BNA G\DATA\BG062119\
 Data File : BG041386.D
 Acq On : 21 Jun 2019 21:13
 Operator : HP/JU
 Sample : K3438-01
 Misc :
 ALS Vial : 6 Sample Multiplier: 1

Instrument :
 BNA_G
 ClientSampleId :
 FK-SF-01-005-A

Quant Time: Jun 22 01:36:49 2019
 Quant Method : Z:\SVOASRV\HPCHEM1\BNA G\METHODS\8270-BG061719.M
 Quant Title : ASP BNA STANDARDS FOR 5 POINT CALIBRATION
 QLast Update : Mon Jun 17 14:58:02 2019
 Response via : Initial Calibration

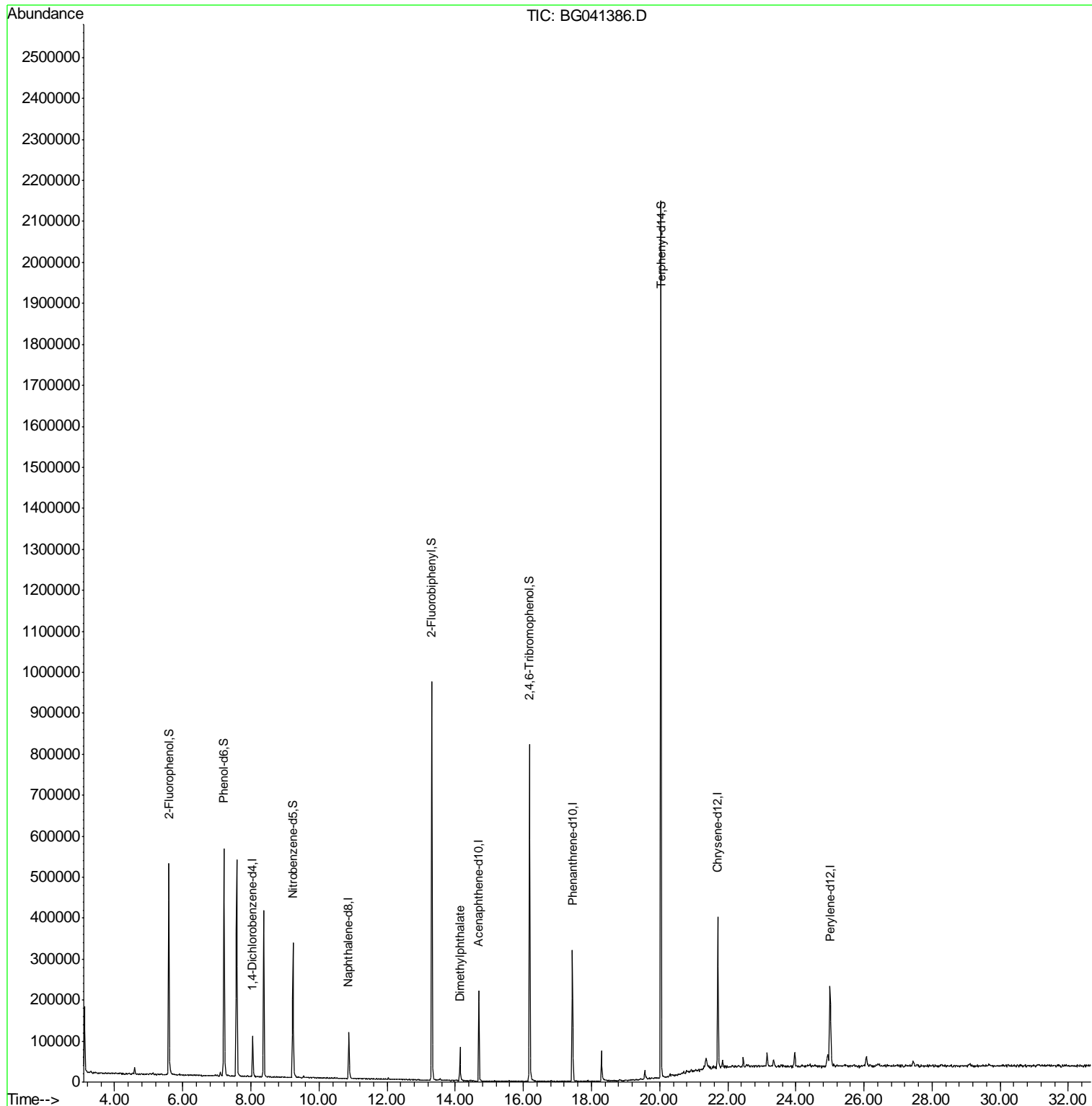
Internal Standards	R.T.	QIon	Response	Conc	Units	Dev(Min)
1) 1,4-Dichlorobenzene-d4	8.05	152	26842	20.00	ng	-0.03
21) Naphthalene-d8	10.88	136	101577	20.00	ng	-0.03
39) Acenaphthene-d10	14.69	164	76658	20.00	ng	-0.03
64) Phenanthrene-d10	17.44	188	214176	20.00	ng	-0.02
76) Chrysene-d12	21.71	240	223042	20.00	ng	-0.03
87) Perylene-d12	25.00	264	231885	20.00	ng	-0.04
System Monitoring Compounds						
5) 2-Fluorophenol	5.59	112	196202	134.31	ng	-0.03
7) Phenol-d6	7.21	99	293084	138.41	ng	-0.02
23) Nitrobenzene-d5	9.23	82	207526	85.92	ng	-0.03
42) 2,4,6-Tribromophenol	16.18	330	162408	138.00	ng	-0.02
45) 2-Fluorobiphenyl	13.31	172	486058	86.18	ng	-0.03
79) Terphenyl-d14	20.04	244	1018098	90.46	ng	-0.02
Target Compounds						Qvalue
50) Dimethylphthalate	14.14	163	61437	9.007	ng	97

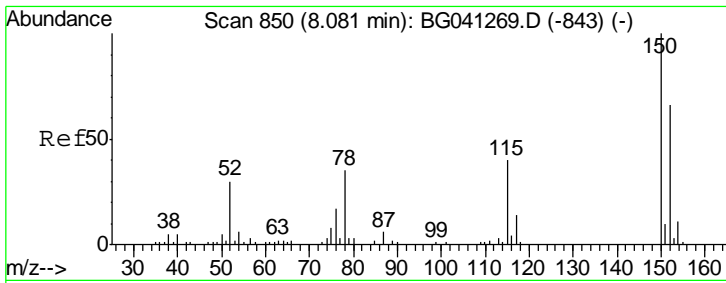
(#) = qualifier out of range (m) = manual integration (+) = signals summed

Data Path : Z:\SVOASRV\HPCHEM1\BNA G\DATA\BG062119\
Data File : BG041386.D
Acq On : 21 Jun 2019 21:13
Operator : HP/JU
Sample : K3438-01
Misc :
ALS Vial : 6 Sample Multiplier: 1

Instrument :
BNA_G
ClientSampled :
FK-SF-01-005-A

Quant Time: Jun 22 01:36:49 2019
Quant Method : Z:\SVOASRV\HPCHEM1\BNA G\METHODS\8270-BG061719.M
Quant Title : ASP BNA STANDARDS FOR 5 POINT CALIBRATION
QLast Update : Mon Jun 17 14:58:02 2019
Response via : Initial Calibration

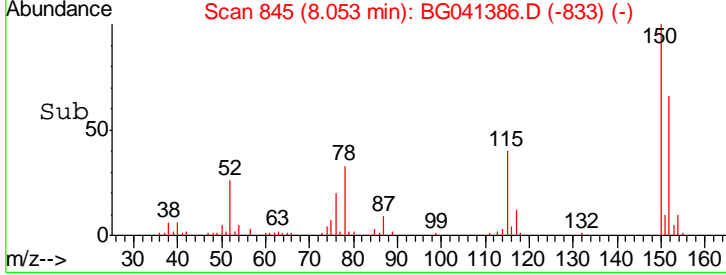
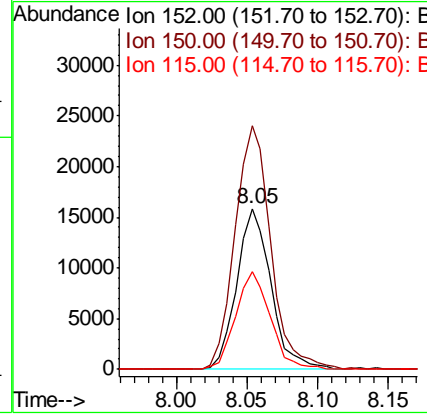
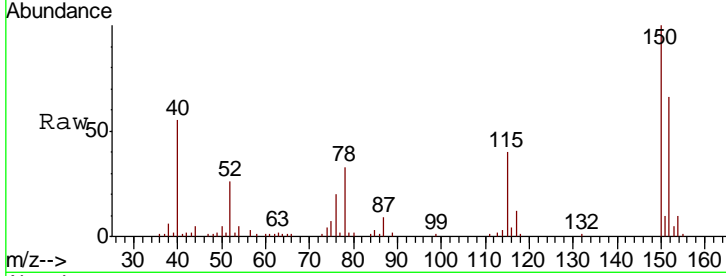




#1
 1,4-Dichlorobenzene-d4
 Concen: 20.000 ng
 RT: 8.05 min Scan# 845
 Delta R.T. -0.03 min
 Lab File: BG041386.D
 Acq: 21 Jun 2019 21:13

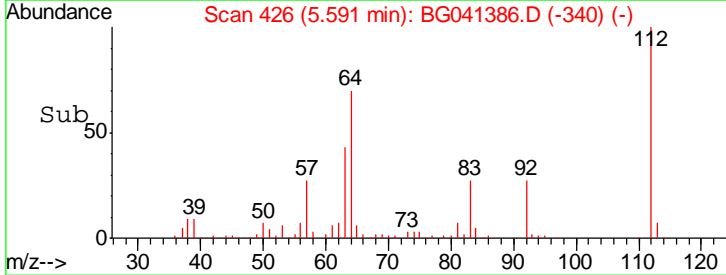
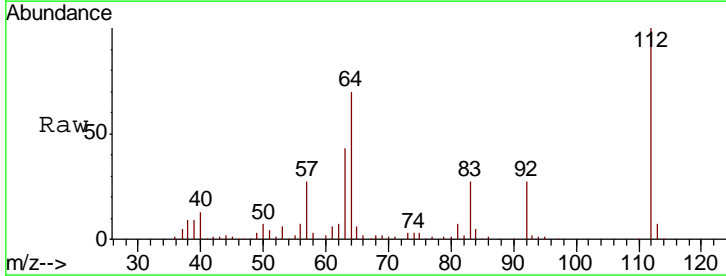
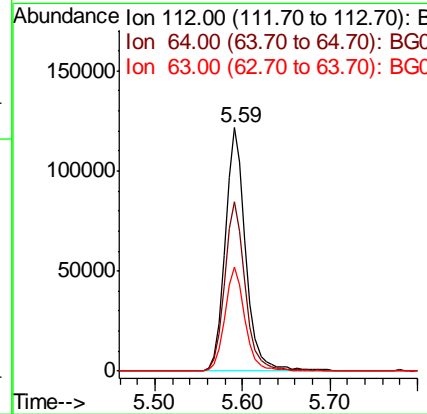
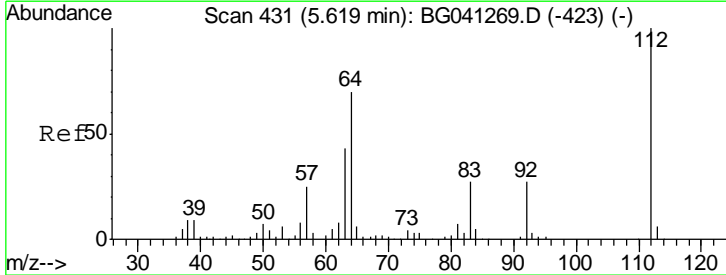
Instrument :
 BNA_G
ClientSampled :
 FK-SF-01-005-A

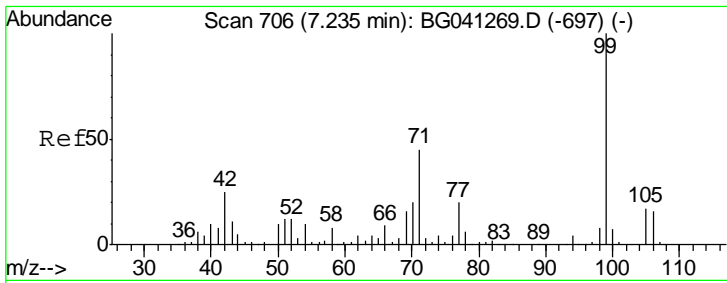
Tgt Ion	Resp	Lower	Upper
152	26842		
152	100		
150	151.3	120.6	181.0
115	60.9	47.9	71.9



#5
 2-Fluorophenol
 Concen: 134.306 ng
 RT: 5.59 min Scan# 426
 Delta R.T. -0.03 min
 Lab File: BG041386.D
 Acq: 21 Jun 2019 21:13

Tgt Ion	Resp	Lower	Upper
112	196202		
112	100		
64	69.7	55.9	83.9
63	42.9	34.6	51.8

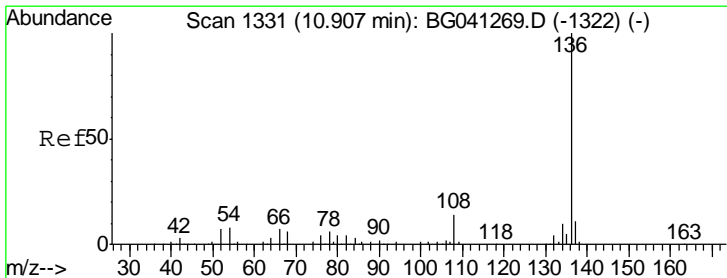
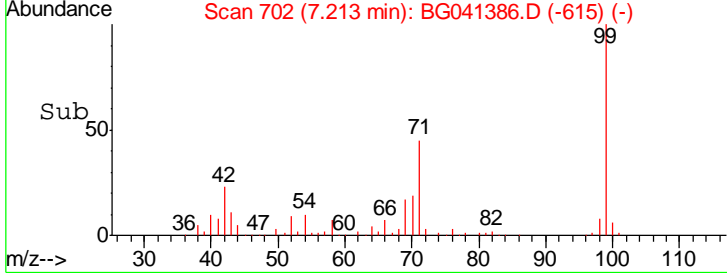
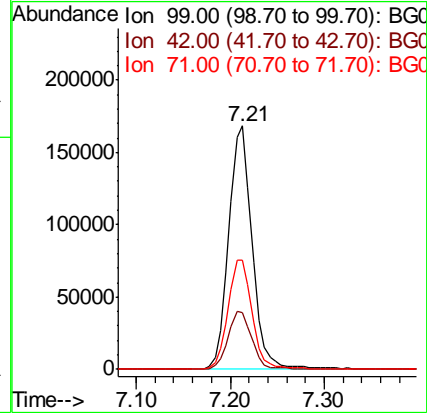
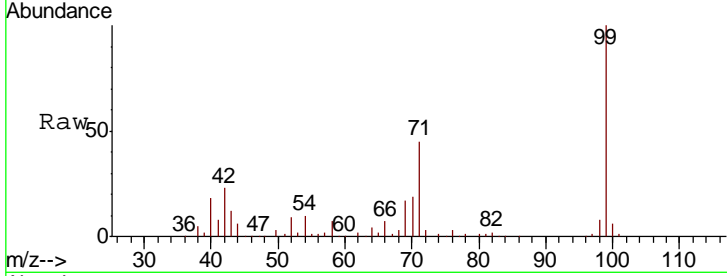




#7
 Phenol-d6
 Concen: 138.409 ng
 RT: 7.21 min Scan# 702
 Delta R.T. -0.02 min
 Lab File: BG041386.D
 Acq: 21 Jun 2019 21:13

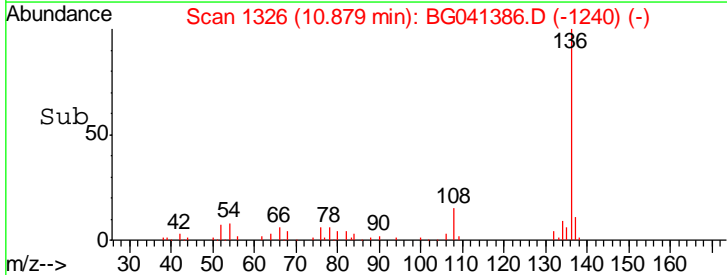
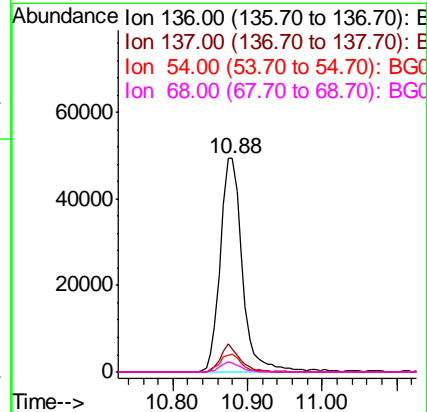
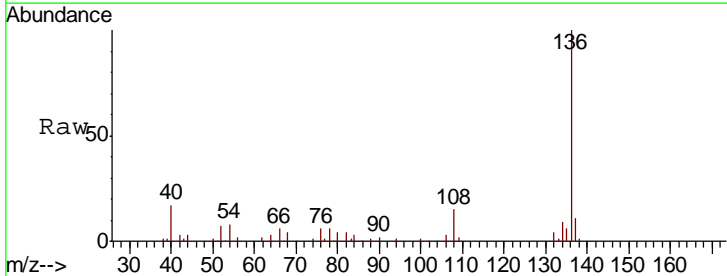
Instrument :
 BNA_G
 ClientSampled :
 FK-SF-01-005-A

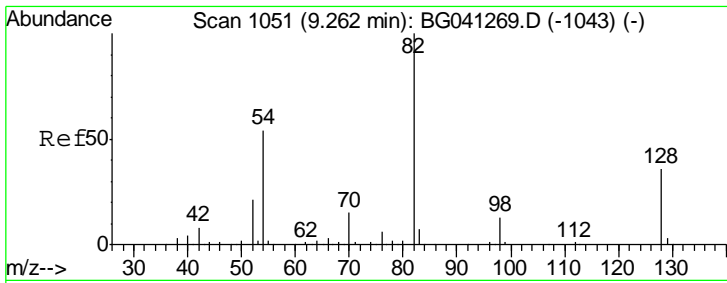
Tgt Ion	Resp	Lower	Upper
99	100		
42	23.5	19.9	29.9
71	45.0	36.4	54.6



#21
 Naphthalene-d8
 Concen: 20.000 ng
 RT: 10.88 min Scan# 1326
 Delta R.T. -0.03 min
 Lab File: BG041386.D
 Acq: 21 Jun 2019 21:13

Tgt Ion	Resp	Lower	Upper
136	100		
137	10.9	8.8	13.2
54	8.2	6.4	9.6
68	4.2	4.8	7.2#

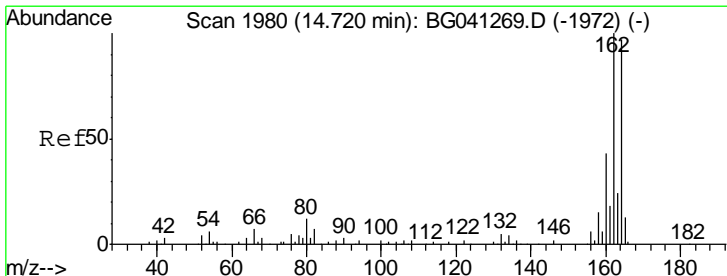
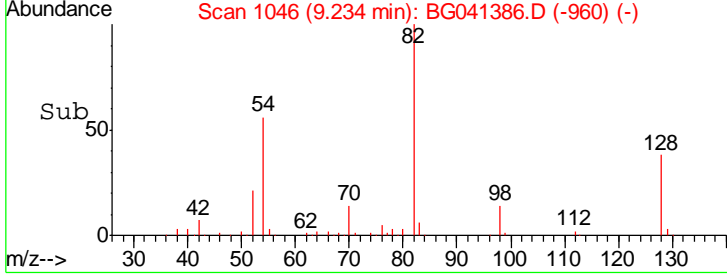
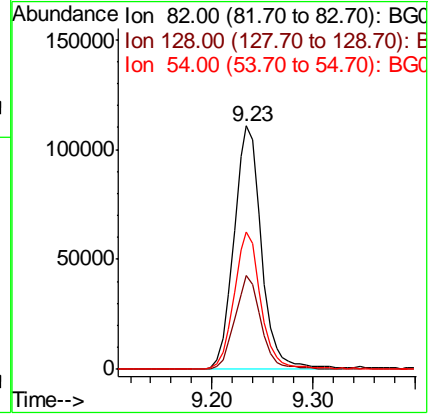
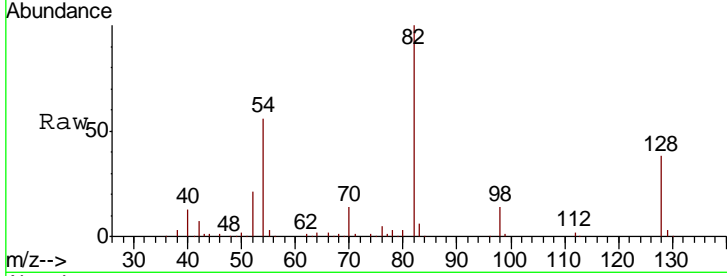




#23
 Nitrobenzene-d5
 Concen: 85.923 ng
 RT: 9.23 min Scan# 1046
 Delta R.T. -0.03 min
 Lab File: BG041386.D
 Acq: 21 Jun 2019 21:13

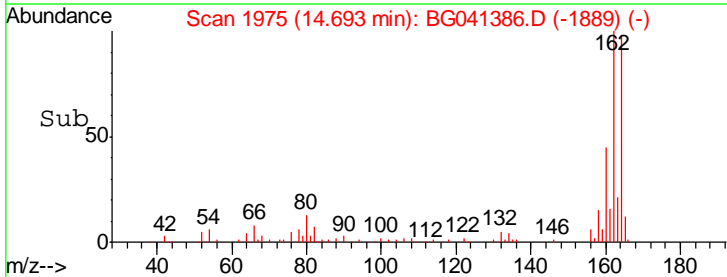
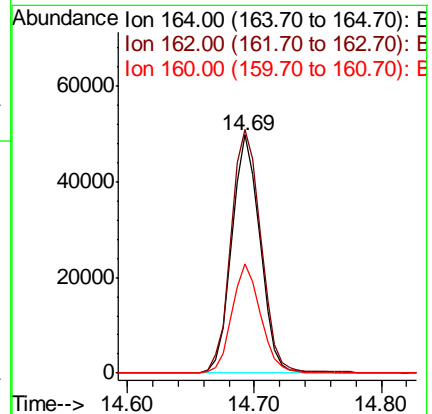
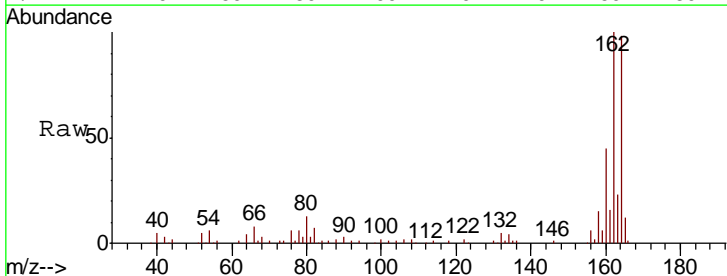
Instrument :
 BNA_G
 ClientSampled :
 FK-SF-01-005-A

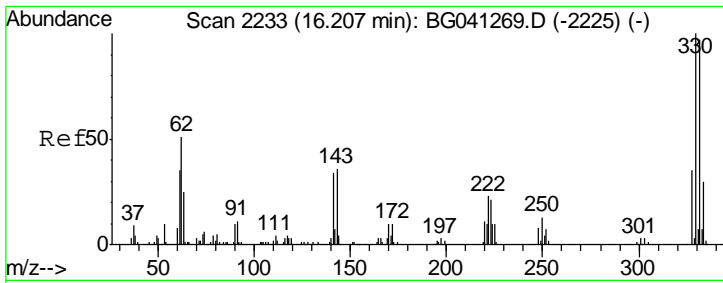
Tgt Ion	Resp	Lower	Upper
82	100		
128	38.3	29.2	43.8
54	56.3	43.4	65.0



#39
 Acenaphthene-d10
 Concen: 20.000 ng
 RT: 14.69 min Scan# 1975
 Delta R.T. -0.03 min
 Lab File: BG041386.D
 Acq: 21 Jun 2019 21:13

Tgt Ion	Resp	Lower	Upper
164	100		
162	102.2	82.8	124.2
160	45.7	35.8	53.8

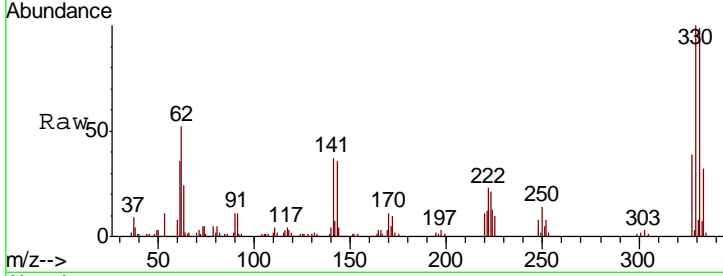




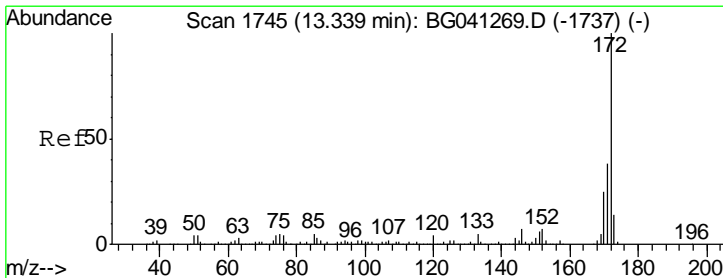
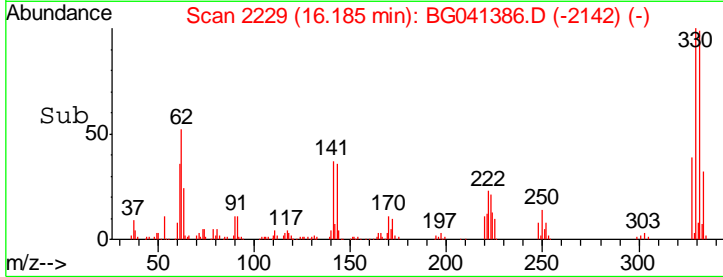
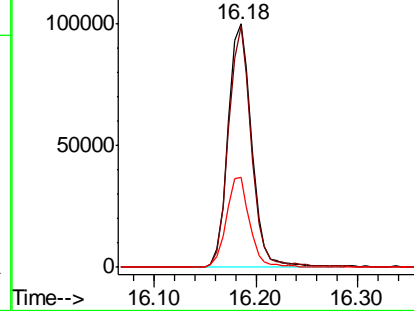
#42
 2,4,6-Tribromophenol
 Concen: 138.000 ng
 RT: 16.18 min Scan# 2229
 Delta R.T. -0.02 min
 Lab File: BG041386.D
 Acq: 21 Jun 2019 21:13

Instrument :
 BNA_G
 ClientSampled :
 FK-SF-01-005-A

Tgt Ion	Resp	Lower	Upper
330	162408		
332	95.9	75.5	113.3
141	36.4	29.0	43.4

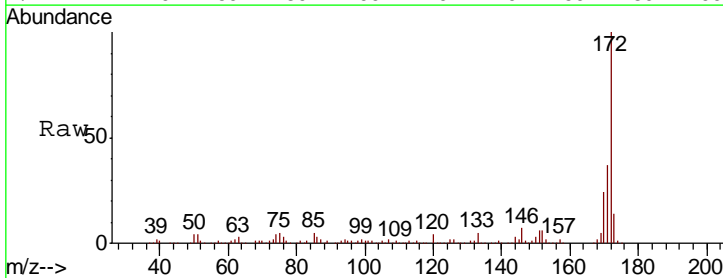


Abundance Ion 329.80 (329.50 to 330.50): E
 Ion 331.80 (331.50 to 332.50): E
 Ion 141.00 (140.70 to 141.70): E

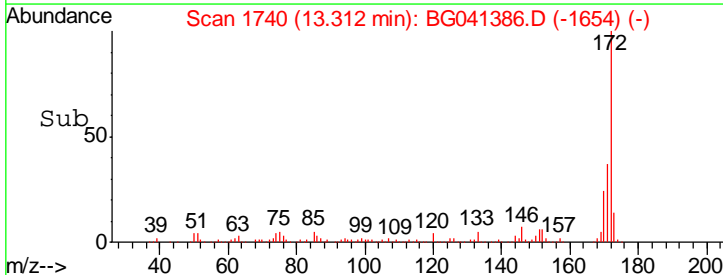
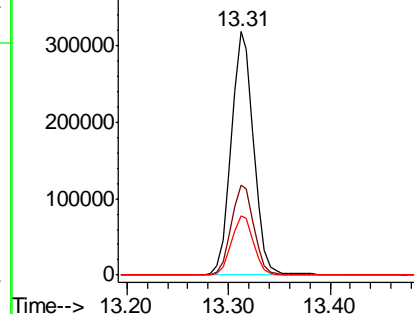


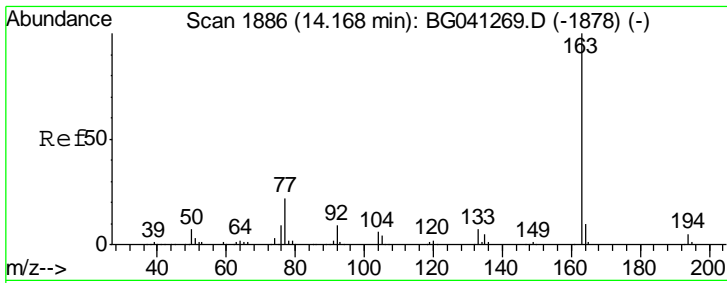
#45
 2-Fluorobiphenyl
 Concen: 86.179 ng
 RT: 13.31 min Scan# 1740
 Delta R.T. -0.03 min
 Lab File: BG041386.D
 Acq: 21 Jun 2019 21:13

Tgt Ion	Resp	Lower	Upper
172	486058		
171	37.2	30.0	45.0
170	24.1	19.8	29.6



Abundance Ion 172.00 (171.70 to 172.70): E
 Ion 171.00 (170.70 to 171.70): E
 Ion 170.00 (169.70 to 170.70): E

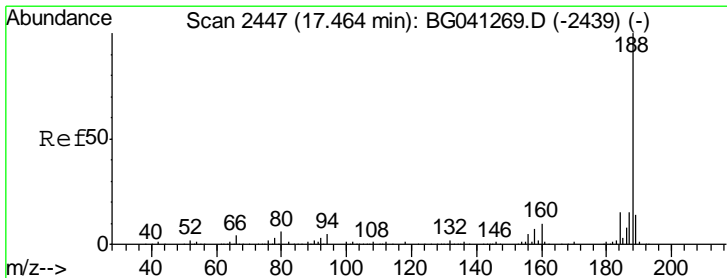
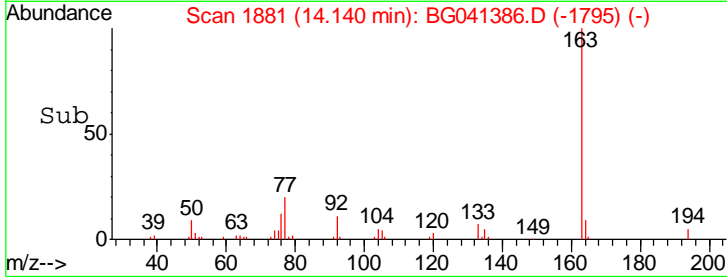
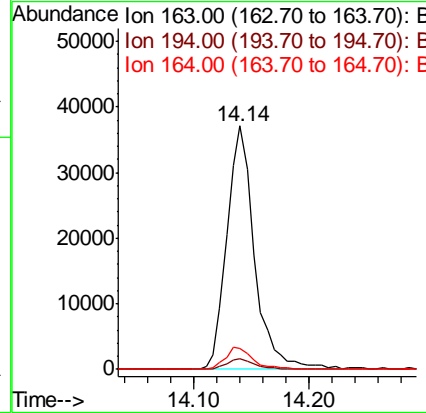
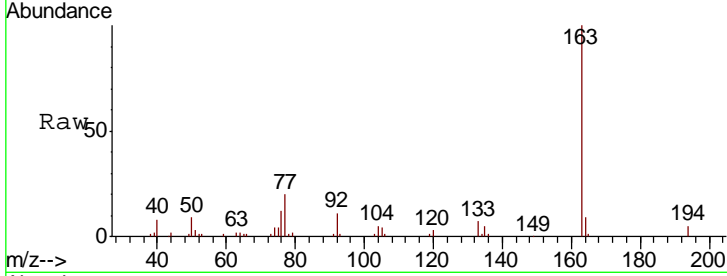




#50
 Dimethylphthalate
 Concen: 9.007 ng
 RT: 14.14 min Scan# 1881
 Delta R.T. -0.03 min
 Lab File: BG041386.D
 Acq: 21 Jun 2019 21:13

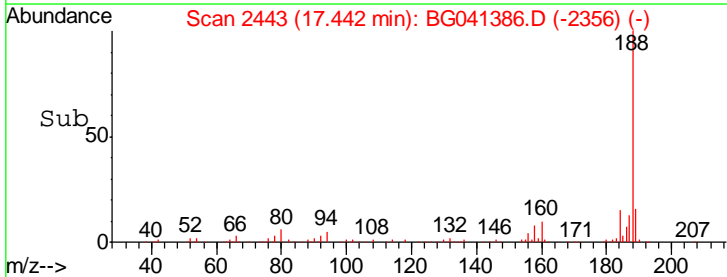
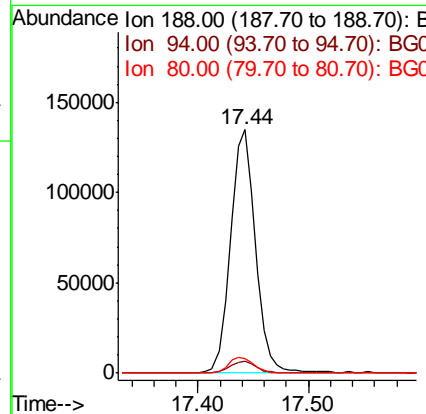
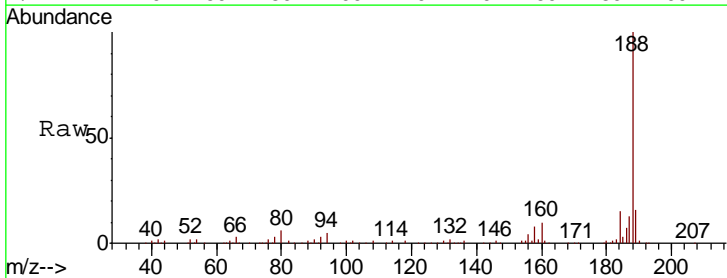
Instrument :
 BNA_G
 ClientSampleId :
 FK-SF-01-005-A

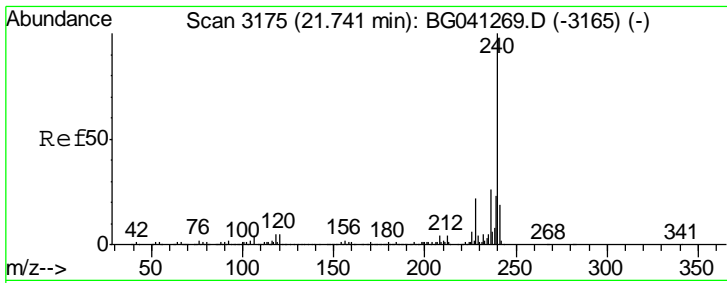
Tgt Ion	Resp	Lower	Upper
163	61437		
194	4.5	3.9	5.9
164	8.8	8.3	12.5



#64
 Phenanthrene-d10
 Concen: 20.000 ng
 RT: 17.44 min Scan# 2443
 Delta R.T. -0.02 min
 Lab File: BG041386.D
 Acq: 21 Jun 2019 21:13

Tgt Ion	Resp	Lower	Upper
188	214176		
94	5.1	3.6	5.4
80	6.2	4.8	7.2

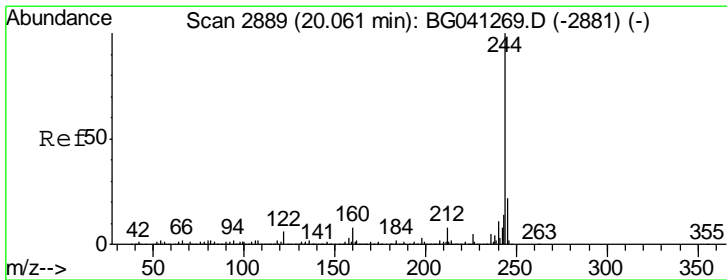
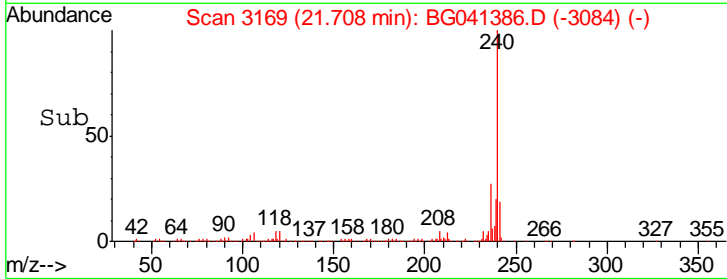
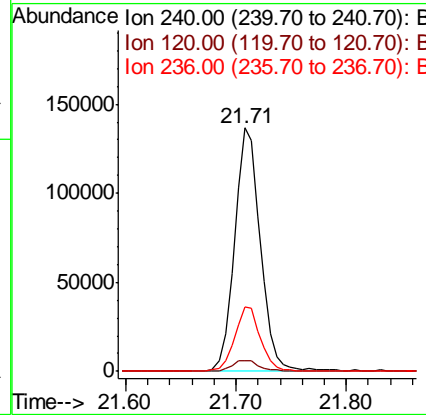
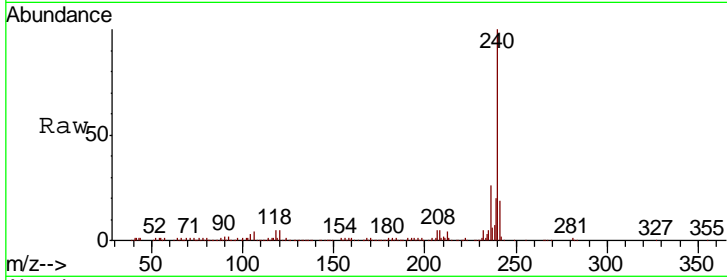




#76
 Chrysene-d12
 Concen: 20.000 ng
 RT: 21.71 min Scan# 3169
 Delta R.T. -0.03 min
 Lab File: BG041386.D
 Acq: 21 Jun 2019 21:13

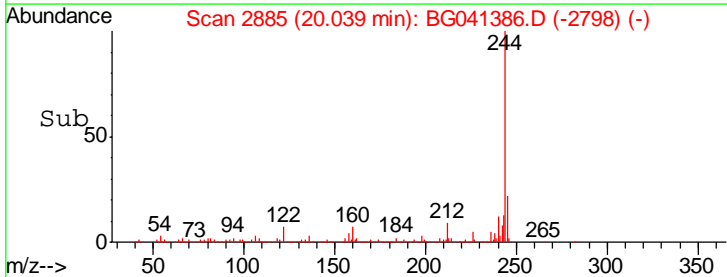
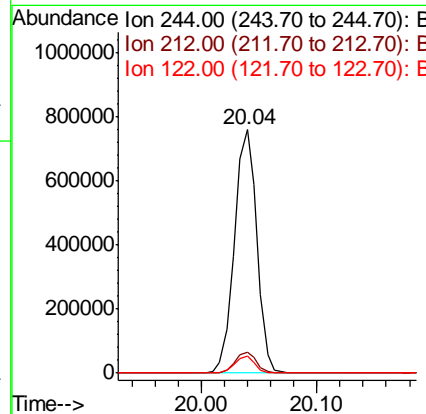
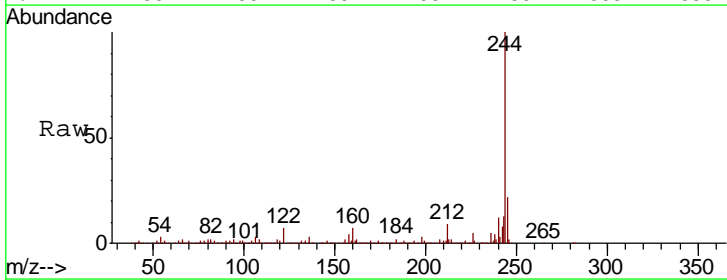
Instrument :
 BNA_G
 ClientSampled :
 FK-SF-01-005-A

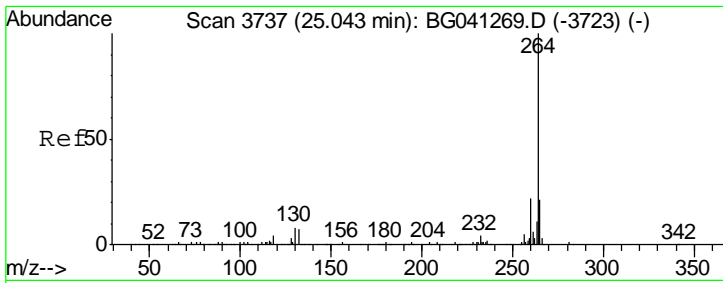
Tgt Ion	Resp	Lower	Upper
240	100		
120	4.5	3.7	5.5
236	26.5	21.1	31.7



#79
 Terphenyl-d14
 Concen: 90.461 ng
 RT: 20.04 min Scan# 2885
 Delta R.T. -0.02 min
 Lab File: BG041386.D
 Acq: 21 Jun 2019 21:13

Tgt Ion	Resp	Lower	Upper
244	100		
212	8.6	6.6	10.0
122	6.8	5.0	7.4





#87
 Perylene-d12
 Concen: 20.000 ng
 RT: 25.00 min Scan# 3730
 Delta R.T. -0.04 min
 Lab File: BG041386.D
 Acq: 21 Jun 2019 21:13

Instrument :
 BNA_G
 ClientSampleId :
 FK-SF-01-005-A

Tot Ion: 264 Resp: 231885

Ion	Ratio	Lower	Upper
264	100		
260	22.4	17.4	26.2
265	22.0	17.2	25.8

