

Data Path : Z:\SVOASRV\HPCHEM1\BNA_G\DATA\BG062819\
 Data File : BG041521.D
 Acq On : 28 Jun 2019 20:26
 Operator : HP/JU
 Sample : K3580-06
 Misc :
 ALS Vial : 15 Sample Multiplier: 1

Instrument :
 BNA_G
 ClientSampleId :
 SB-13-COMP

Quant Time: Jun 29 01:51:07 2019
 Quant Method : Z:\SVOASRV\HPCHEM1\BNA_G\METHODS\8270-BG062619.M
 Quant Title : ASP BNA STANDARDS FOR 5 POINT CALIBRATION
 QLast Update : Thu Jun 27 13:25:55 2019
 Response via : Initial Calibration

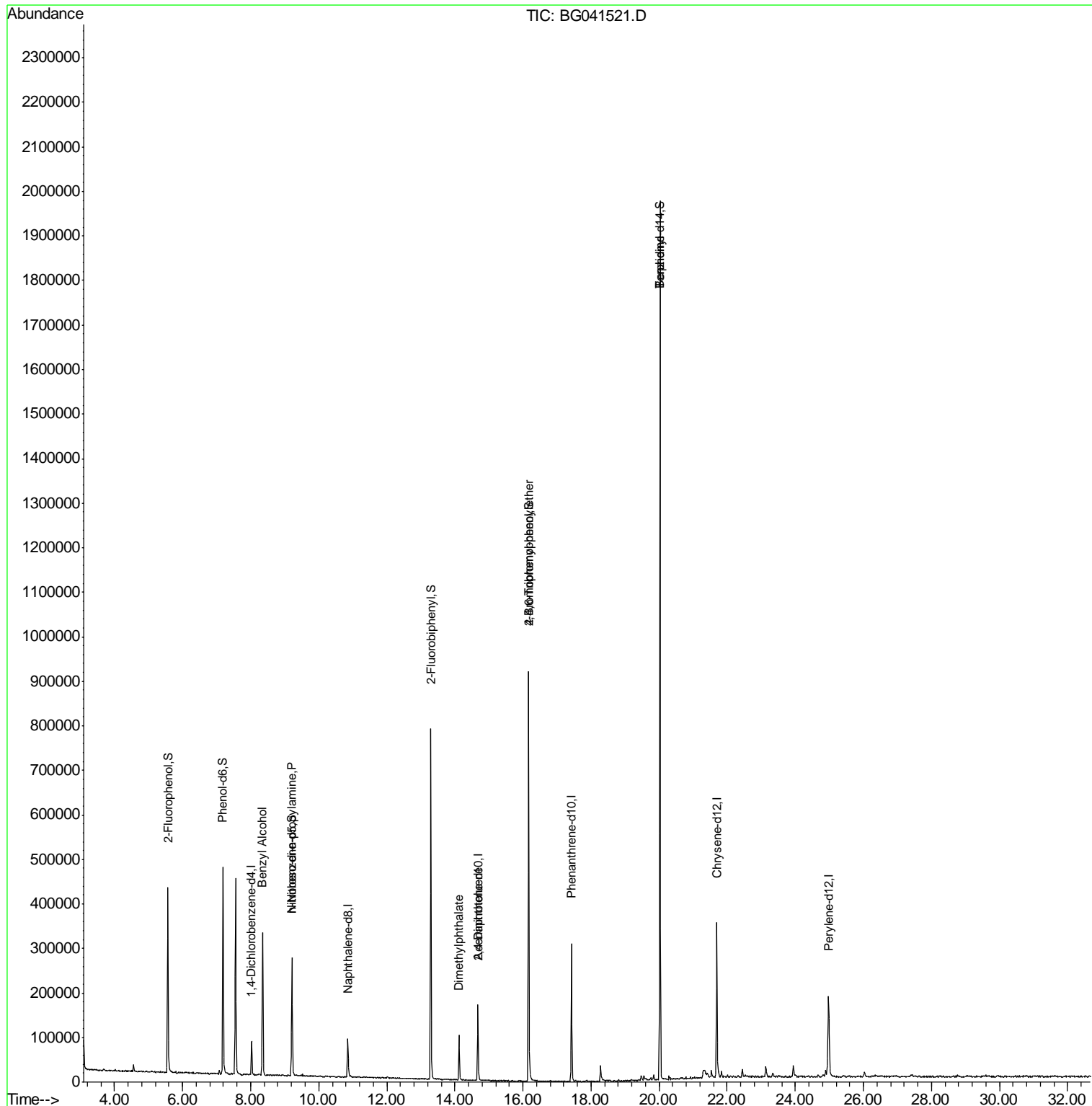
Internal Standards	R.T.	QIon	Response	Conc	Units	Dev(Min)
1) 1,4-Dichlorobenzene-d4	8.03	152	20778	20.00	ng	0.00
21) Naphthalene-d8	10.85	136	76301	20.00	ng	0.00
39) Acenaphthene-d10	14.68	164	62317	20.00	ng	0.00
64) Phenanthrene-d10	17.42	188	197619	20.00	ng	0.00
76) Chrysene-d12	21.70	240	209468	20.00	ng	0.00
87) Perylene-d12	24.97	264	225780	20.00	ng	0.00
System Monitoring Compounds						
5) 2-Fluorophenol	5.56	112	166596	142.95	ng	0.00
7) Phenol-d6	7.18	99	246590	150.30	ng	0.00
23) Nitrobenzene-d5	9.21	82	169538	92.67	ng	0.00
42) 2,4,6-Tribromophenol	16.17	330	175415	164.86	ng	0.00
45) 2-Fluorobiphenyl	13.29	172	392887	80.90	ng	0.00
79) Terphenyl-d14	20.02	244	979166	99.34	ng	0.00
Target Compounds						
15) Benzyl Alcohol	8.35	79	3014	2.307	ng	# 62
19) n-Nitroso-di-n-propylamine	9.21	70	24004	19.615	ng	# 76
50) Dimethylphthalate	14.12	163	68479	12.075	ng	99
57) 2,4-Dinitrotoluene	14.68	165	7966	4.563	ng	# 20
67) 4-Bromophenyl-phenylether	16.17	248	12754	4.723	ng	# 1
77) Benzidine	20.02	184	17227	3.707	ng	# 94

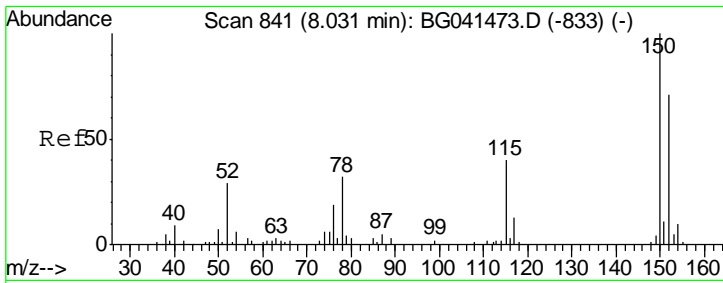
(#) = qualifier out of range (m) = manual integration (+) = signals summed

Data Path : Z:\SVOASRV\HPCHEM1\BNA_G\DATA\BG062819\
 Data File : BG041521.D
 Acq On : 28 Jun 2019 20:26
 Operator : HP/JU
 Sample : K3580-06
 Misc :
 ALS Vial : 15 Sample Multiplier: 1

Instrument :
 BNA_G
 ClientSampled :
 SB-13-COMP

Quant Time: Jun 29 01:51:07 2019
 Quant Method : Z:\SVOASRV\HPCHEM1\BNA_G\METHODS\8270-BG062619.M
 Quant Title : ASP BNA STANDARDS FOR 5 POINT CALIBRATION
 QLast Update : Thu Jun 27 13:25:55 2019
 Response via : Initial Calibration

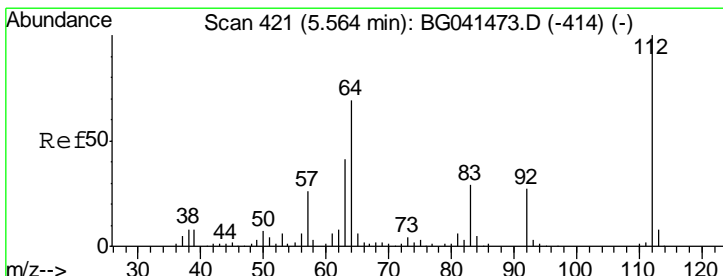
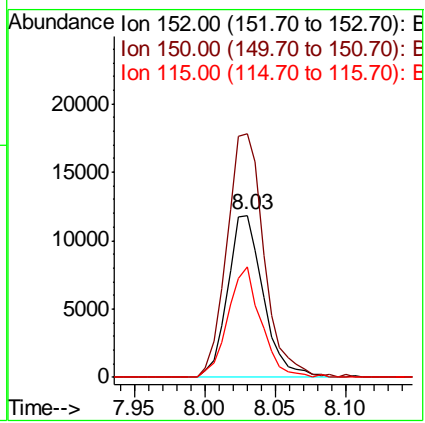
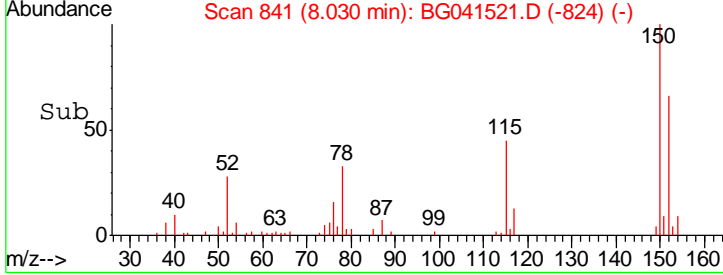
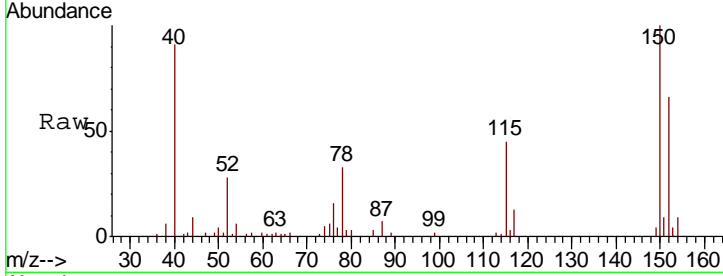




#1
 1,4-Dichlorobenzene-d4
 Concen: 20.000 ng
 RT: 8.03 min Scan# 841
 Delta R.T. -0.00 min
 Lab File: BG041521.D
 Acq: 28 Jun 2019 20:26

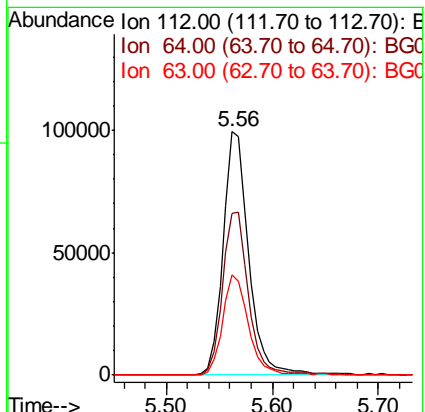
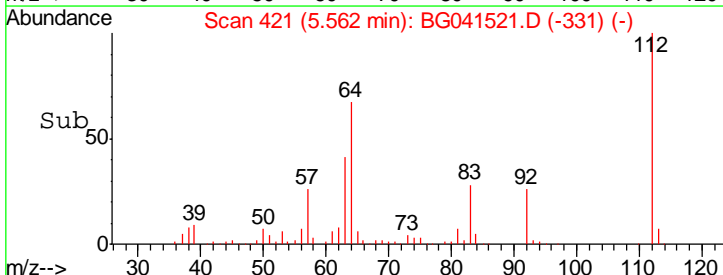
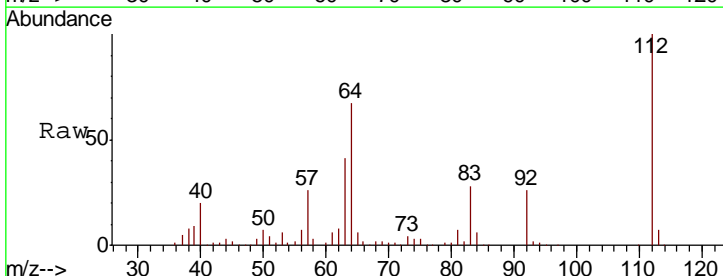
Instrument :
 BNA_G
ClientSampleId :
 SB-13-COMP

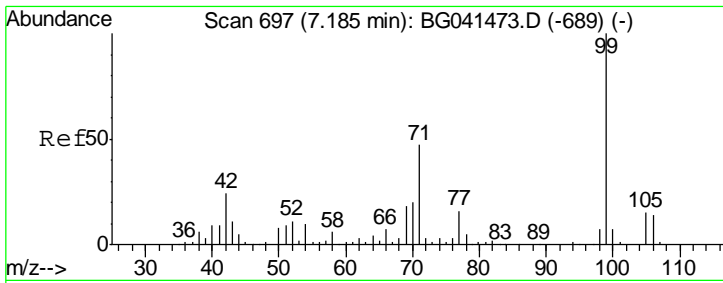
Tgt Ion	Resp	Lower	Upper
152	20778		
150	150.5	112.4	168.6
115	68.1	44.6	66.8#



#5
 2-Fluorophenol
 Concen: 142.947 ng
 RT: 5.56 min Scan# 421
 Delta R.T. -0.00 min
 Lab File: BG041521.D
 Acq: 28 Jun 2019 20:26

Tgt Ion	Resp	Lower	Upper
112	166596		
64	66.6	55.1	82.7
63	41.4	32.4	48.6

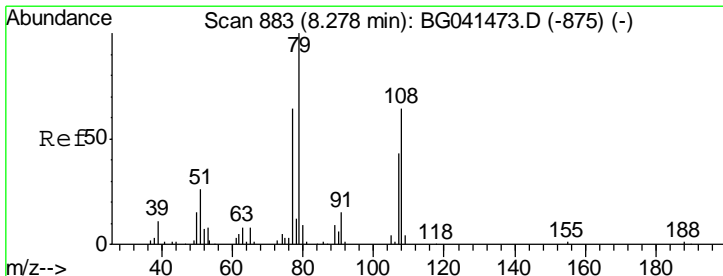
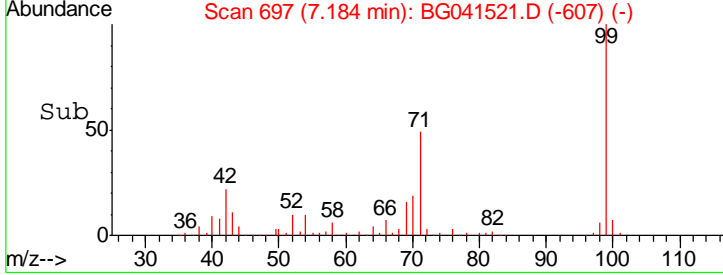
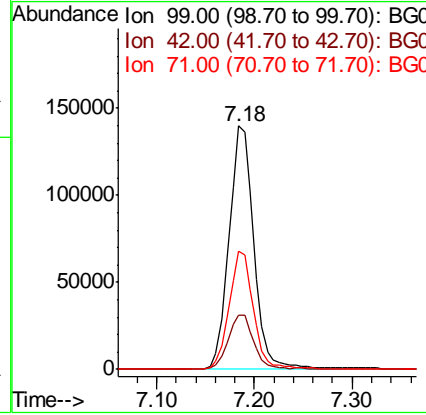
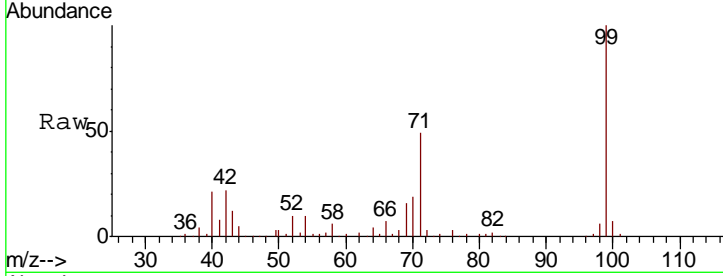




#7
 Phenol-d6
 Concen: 150.302 ng
 RT: 7.18 min Scan# 697
 Delta R.T. -0.00 min
 Lab File: BG041521.D
 Acq: 28 Jun 2019 20:26

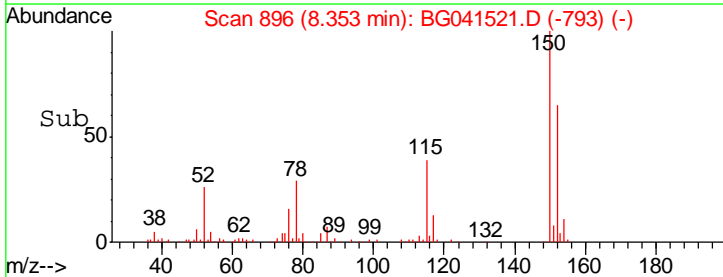
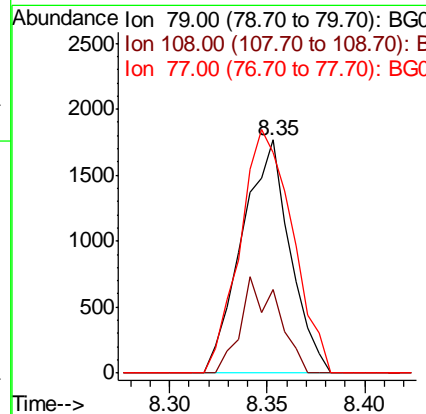
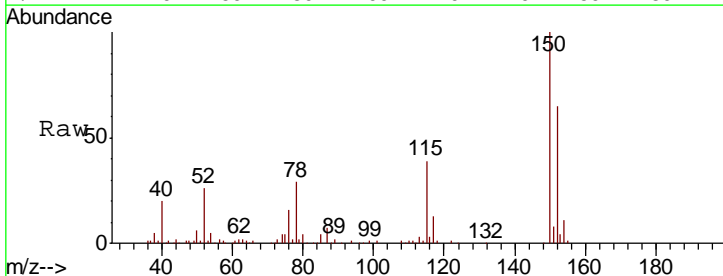
Instrument :
 BNA_G
 ClientSampled :
 SB-13-COMP

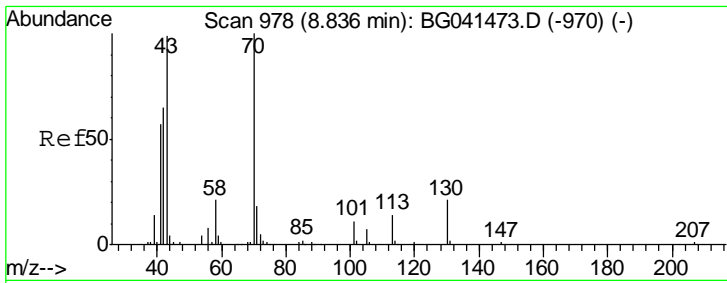
Tgt Ion	Resp	Lower	Upper
99	246590		
42	22.4	19.0	28.6
71	48.7	37.4	56.2



#15
 Benzyl Alcohol
 Concen: 2.307 ng
 RT: 8.35 min Scan# 896
 Delta R.T. 0.07 min
 Lab File: BG041521.D
 Acq: 28 Jun 2019 20:26

Tgt Ion	Resp	Lower	Upper
79	3014		
108	35.7	51.4	77.0#
77	94.6	50.8	76.2#

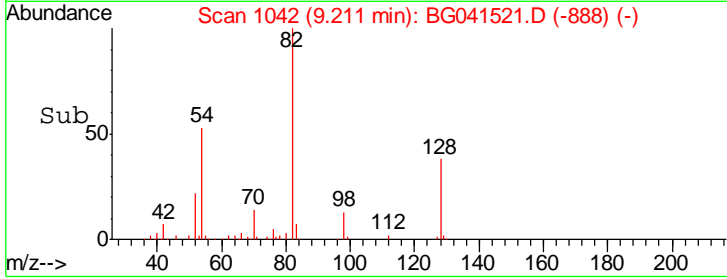
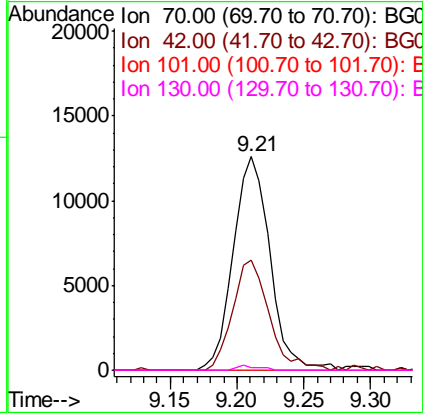
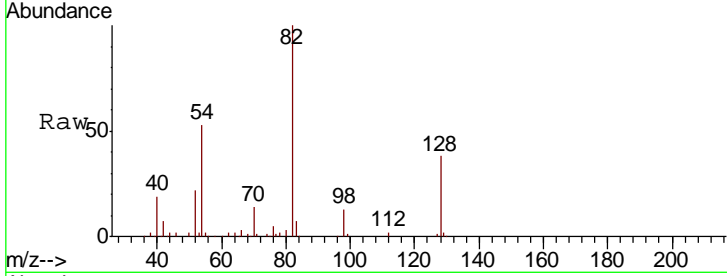




#19
 n-Nitroso-di-n-propylamine
 Concen: 19.615 ng
 RT: 9.21 min Scan# 1042
 Delta R.T. 0.37 min
 Lab File: BG041521.D
 Acq: 28 Jun 2019 20:26

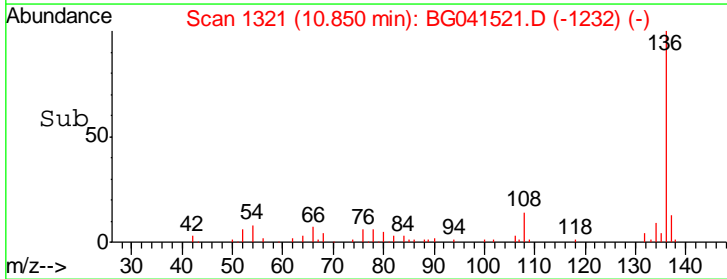
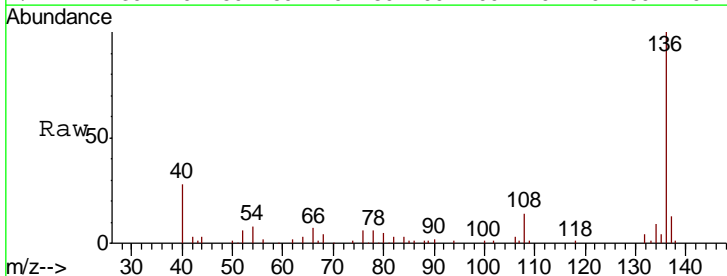
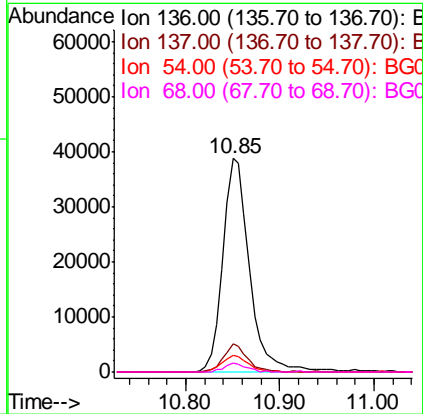
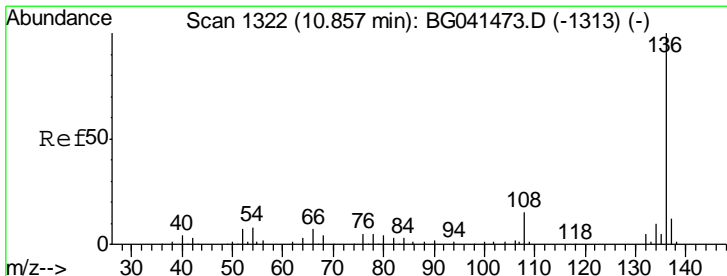
Instrument :
 BNA_G
ClientSampled :
 SB-13-COMP

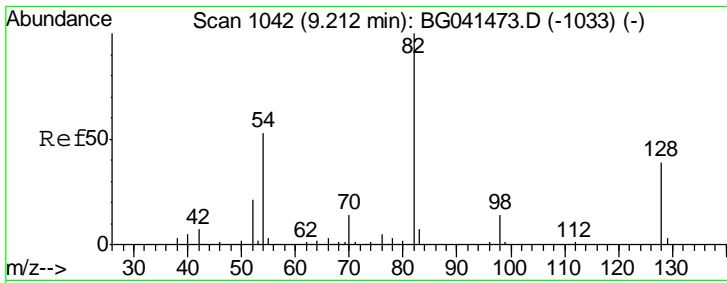
Tgt Ion	Resp	Lower	Upper
70	100		
42	51.5	52.6	78.8#
101	0.0	8.6	13.0#
130	1.4	16.6	25.0#



#21
 Naphthalene-d8
 Concen: 20.000 ng
 RT: 10.85 min Scan# 1321
 Delta R.T. -0.01 min
 Lab File: BG041521.D
 Acq: 28 Jun 2019 20:26

Tgt Ion	Resp	Lower	Upper
136	100		
137	13.2	9.3	13.9
54	7.6	7.1	10.7
68	4.0	3.3	4.9

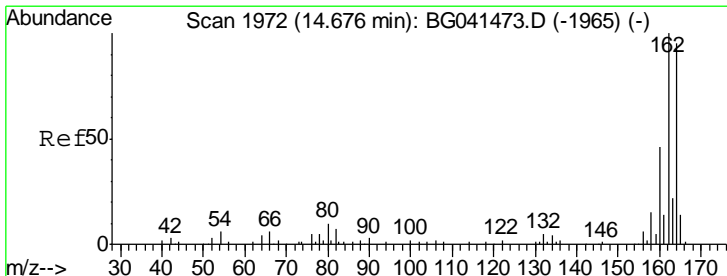
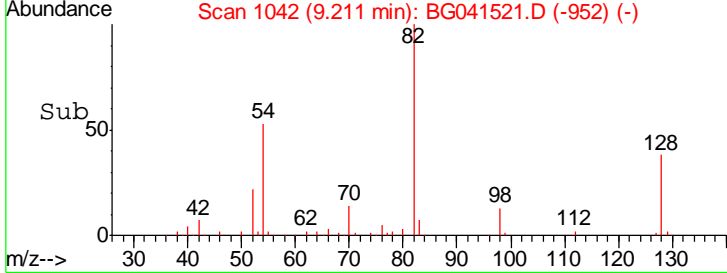
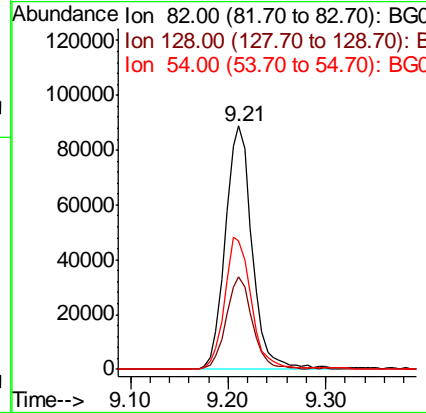
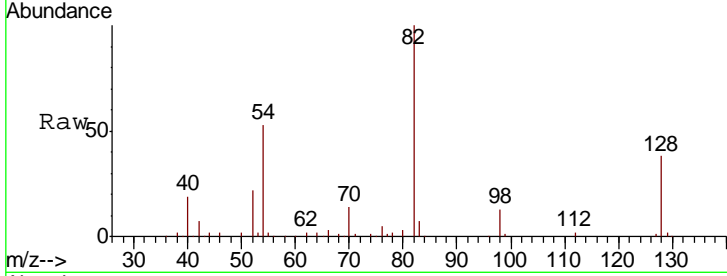




#23
 Nitrobenzene-d5
 Concen: 92.671 ng
 RT: 9.21 min Scan# 1042
 Delta R.T. -0.00 min
 Lab File: BG041521.D
 Acq: 28 Jun 2019 20:26

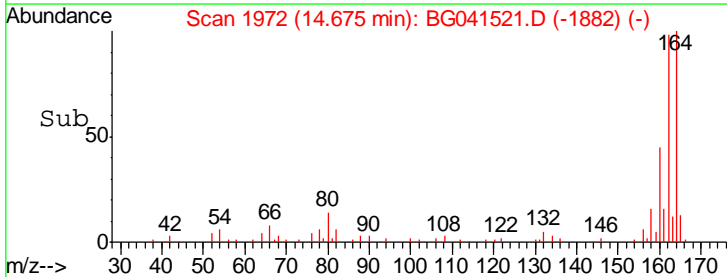
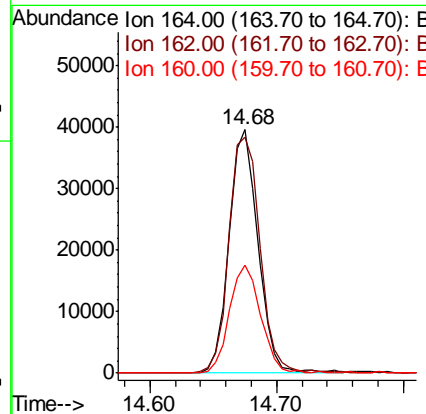
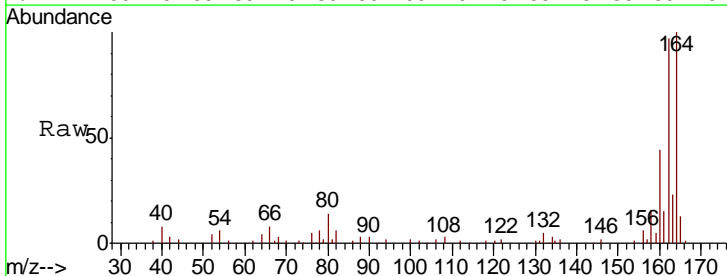
Instrument :
 BNA_G
 ClientSampled :
 SB-13-COMP

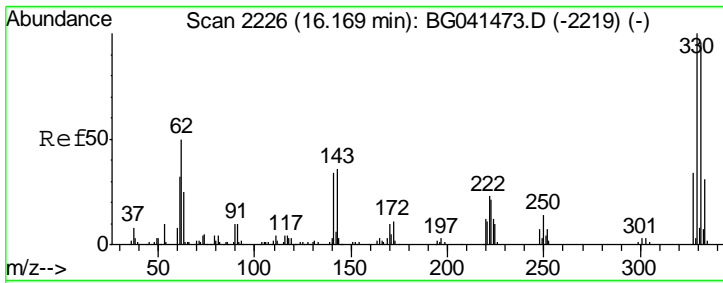
Tgt Ion	Resp	Lower	Upper
82	169538		
128	38.1	30.9	46.3
54	52.9	42.2	63.2



#39
 Acenaphthene-d10
 Concen: 20.000 ng
 RT: 14.68 min Scan# 1972
 Delta R.T. -0.00 min
 Lab File: BG041521.D
 Acq: 28 Jun 2019 20:26

Tgt Ion	Resp	Lower	Upper
164	62317		
162	97.0	84.4	126.6
160	44.2	38.8	58.2

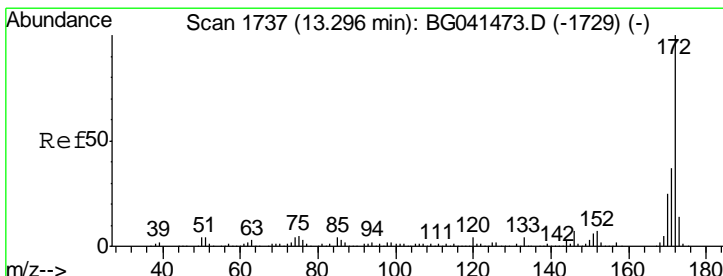
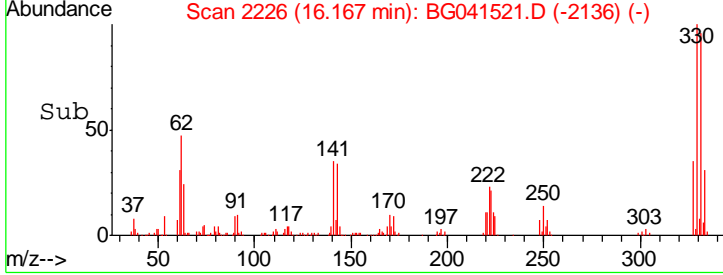
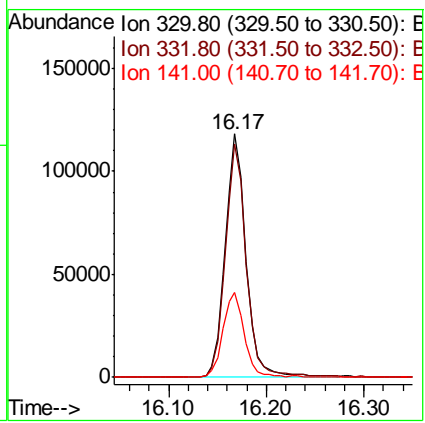
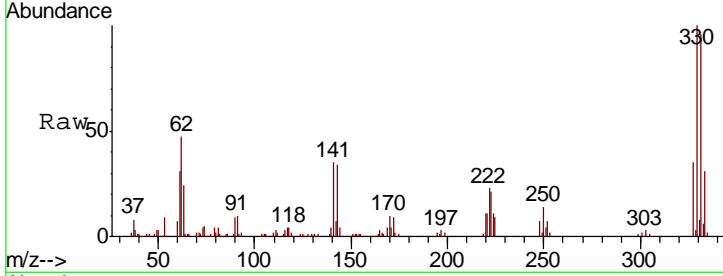




#42
 2,4,6-Tribromophenol
 Concen: 164.860 ng
 RT: 16.17 min Scan# 2226
 Delta R.T. -0.00 min
 Lab File: BG041521.D
 Acq: 28 Jun 2019 20:26

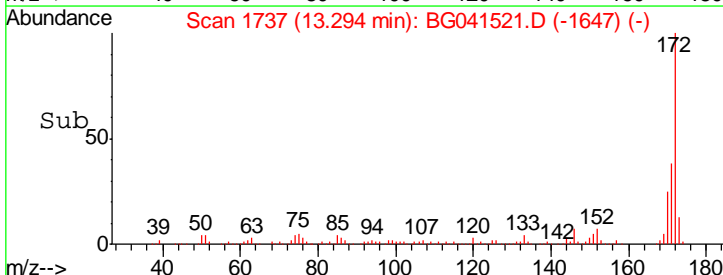
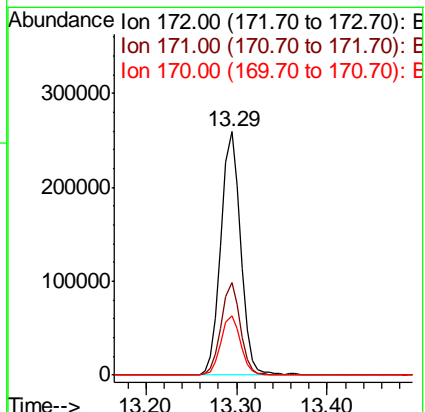
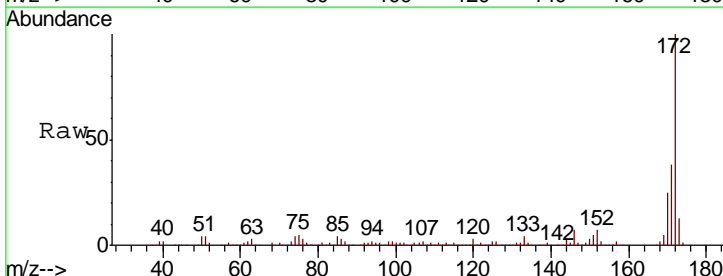
Instrument :
 BNA_G
 ClientSampleId :
 SB-13-COMP

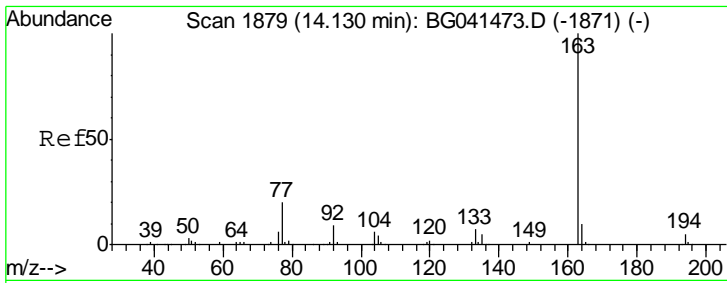
Tgt Ion	Resp	Lower	Upper
330	175415		
332	96.6	75.5	113.3
141	35.7	27.8	41.6



#45
 2-Fluorobiphenyl
 Concen: 80.905 ng
 RT: 13.29 min Scan# 1737
 Delta R.T. -0.00 min
 Lab File: BG041521.D
 Acq: 28 Jun 2019 20:26

Tgt Ion	Resp	Lower	Upper
172	392887		
171	38.0	29.6	44.4
170	24.6	20.0	30.0

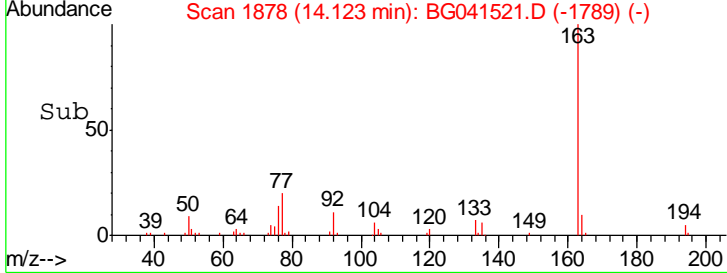
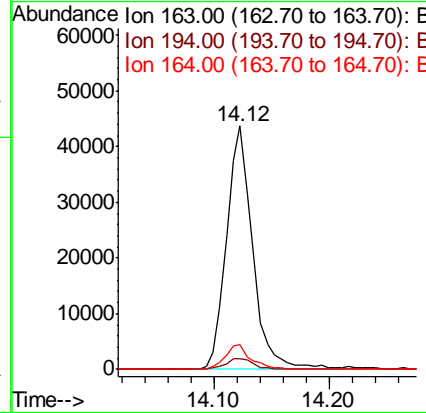
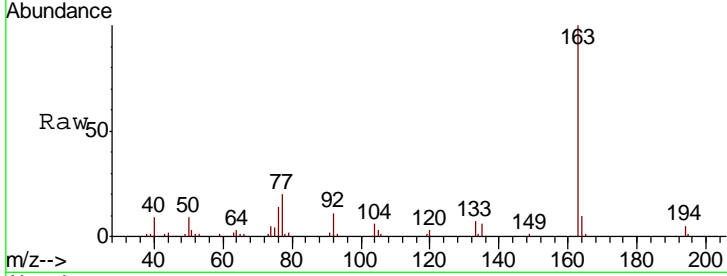




#50
 Dimethylphthalate
 Concen: 12.075 ng
 RT: 14.12 min Scan# 1878
 Delta R.T. -0.01 min
 Lab File: BG041521.D
 Acq: 28 Jun 2019 20:26

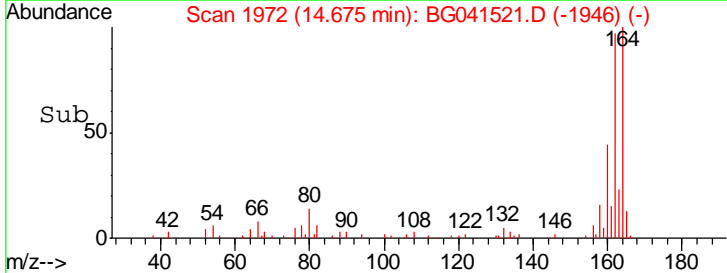
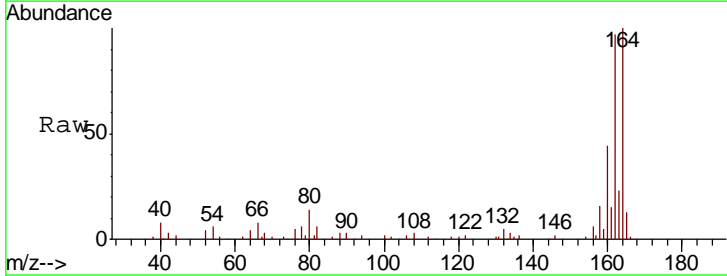
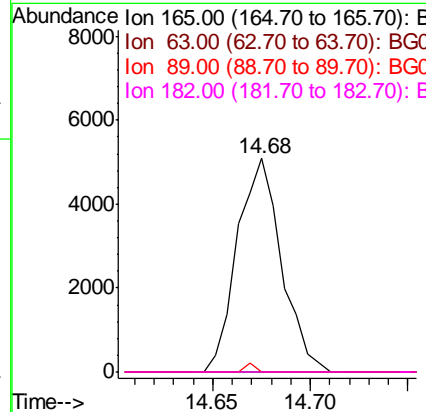
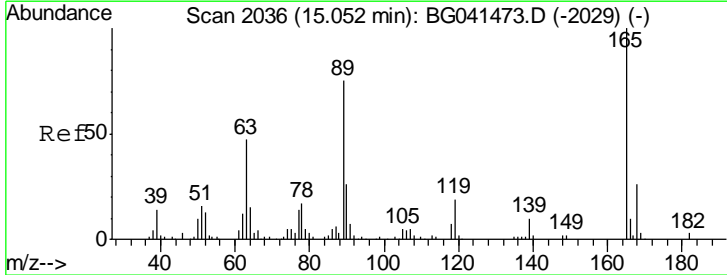
Instrument :
 BNA_G
 ClientSampleId :
 SB-13-COMP

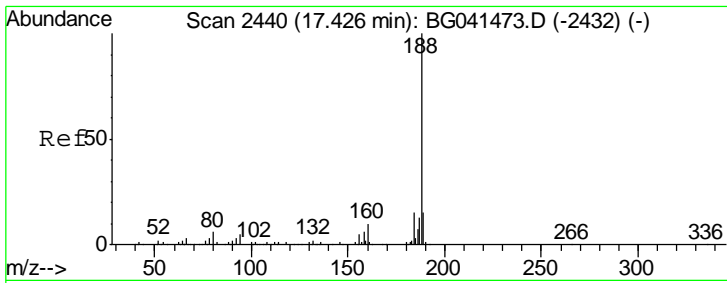
Tgt Ion	Resp	Lower	Upper
163	100		
194	4.5	3.7	5.5
164	10.0	7.8	11.6



#57
 2,4-Dinitrotoluene
 Concen: 4.563 ng
 RT: 14.68 min Scan# 1972
 Delta R.T. -0.38 min
 Lab File: BG041521.D
 Acq: 28 Jun 2019 20:26

Tgt Ion	Resp	Lower	Upper
165	100		
63	0.0	38.8	58.2#
89	0.0	60.1	90.1#
182	0.0	2.2	3.2#

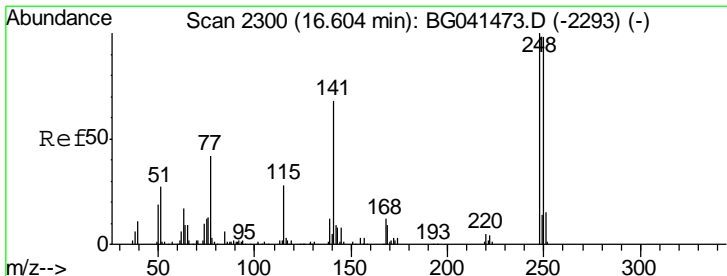
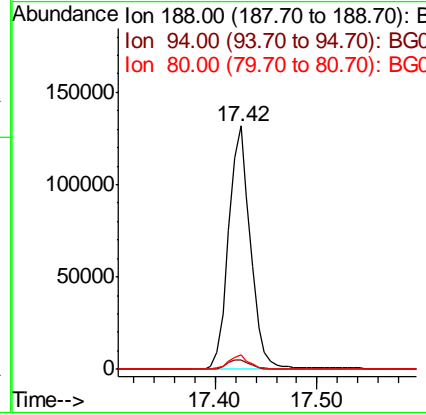
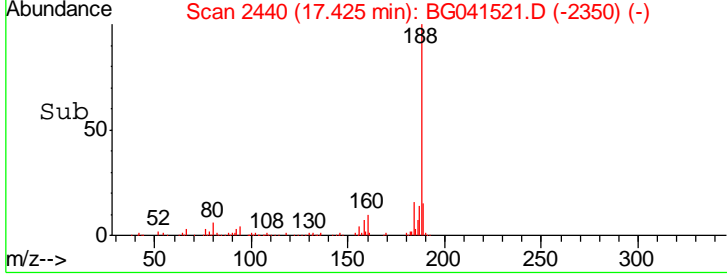
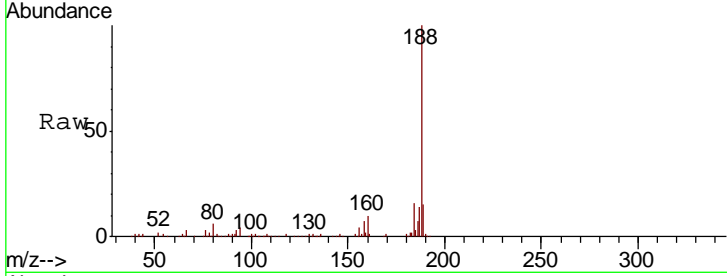




#64
 Phenanthrene-d10
 Concen: 20.000 ng
 RT: 17.42 min Scan# 2440
 Delta R.T. -0.00 min
 Lab File: BG041521.D
 Acq: 28 Jun 2019 20:26

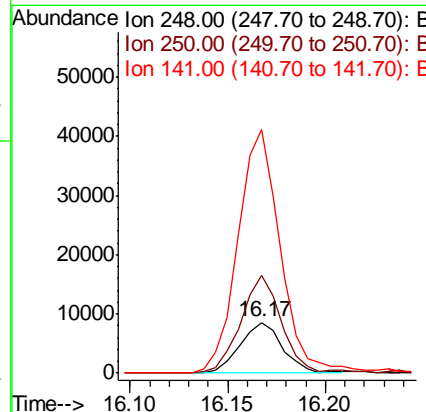
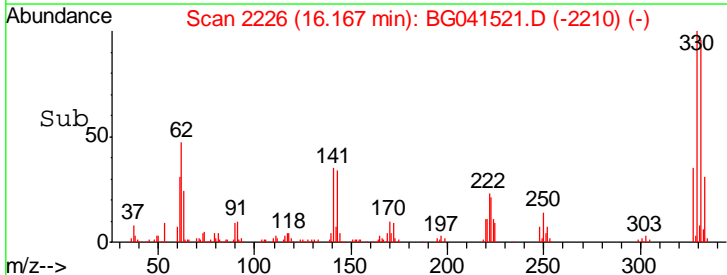
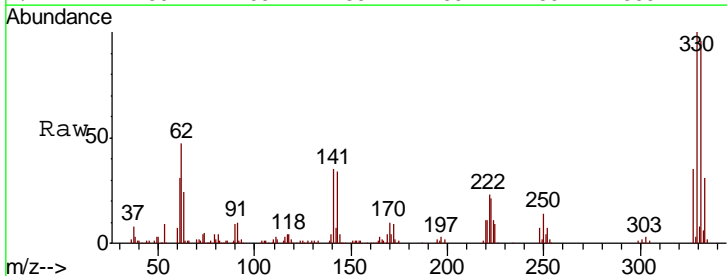
Instrument :
 BNA_G
 ClientSampled :
 SB-13-COMP

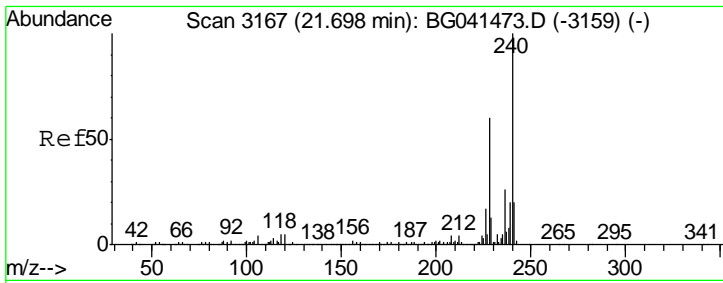
Tgt Ion	Resp	Lower	Upper
188	197619		
94	4.0	3.8	5.8
80	6.1	4.8	7.2



#67
 4-Bromophenyl-phenylether
 Concen: 4.723 ng
 RT: 16.17 min Scan# 2226
 Delta R.T. -0.44 min
 Lab File: BG041521.D
 Acq: 28 Jun 2019 20:26

Tgt Ion	Resp	Lower	Upper
248	12754		
250	193.1	78.1	117.1#
141	479.6	54.1	81.1#

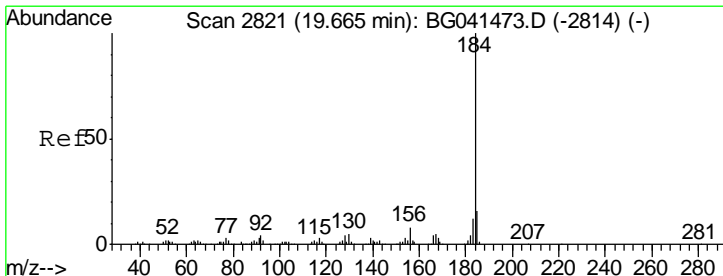
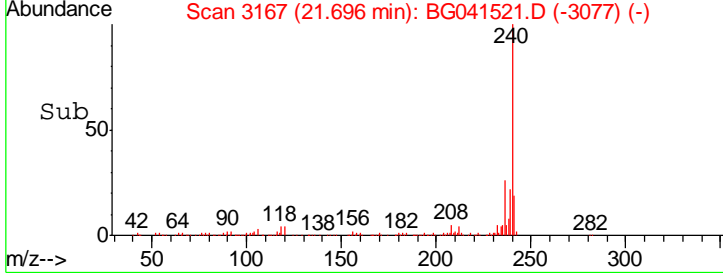
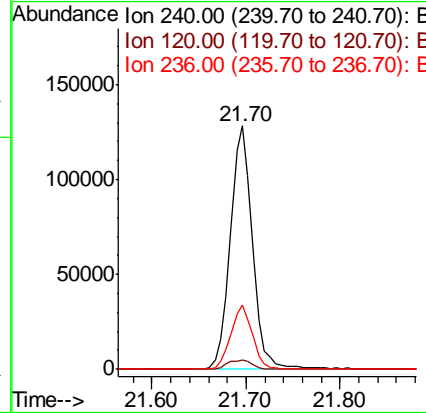
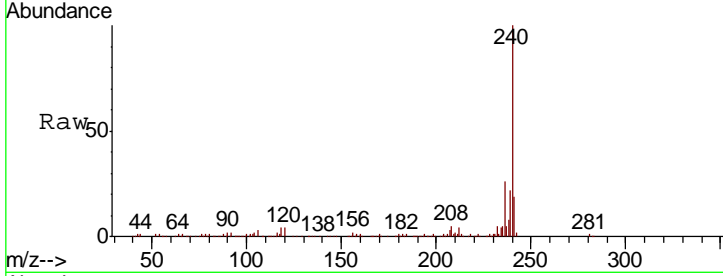




#76
 Chrysene-d12
 Concen: 20.000 ng
 RT: 21.70 min Scan# 3167
 Delta R.T. -0.00 min
 Lab File: BG041521.D
 Acq: 28 Jun 2019 20:26

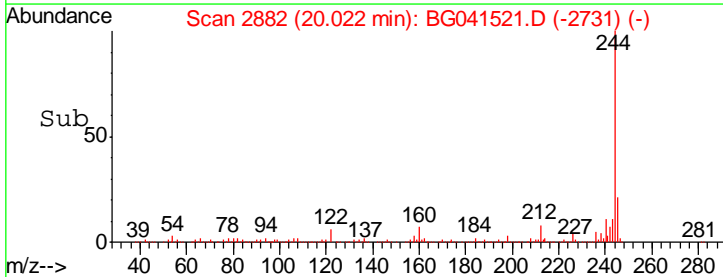
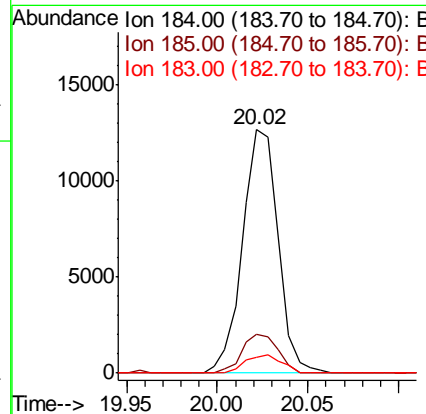
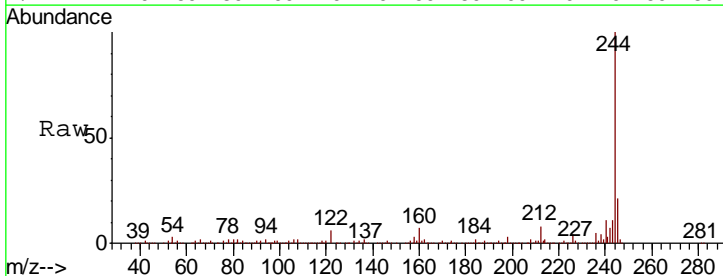
Instrument :
 BNA_G
 ClientSampled :
 SB-13-COMP

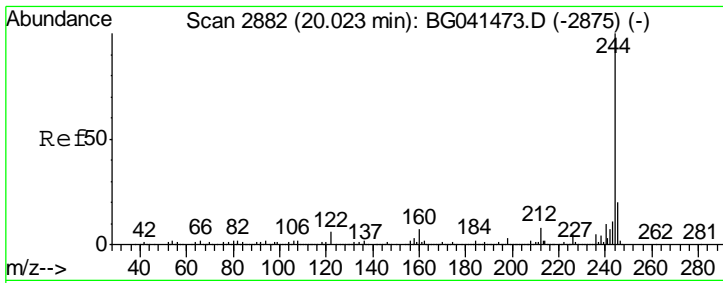
Tgt Ion	Resp	Lower	Upper
240	100		
120	3.9	3.7	5.5
236	26.4	20.8	31.2



#77
 Benzidine
 Concen: 3.707 ng
 RT: 20.02 min Scan# 2882
 Delta R.T. 0.36 min
 Lab File: BG041521.D
 Acq: 28 Jun 2019 20:26

Tgt Ion	Resp	Lower	Upper
184	100		
185	16.1	12.7	19.1
183	6.4	9.4	14.2#

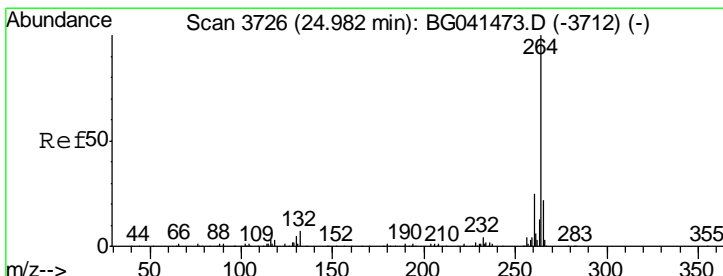
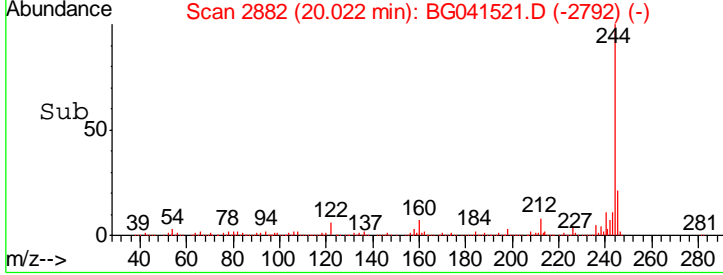
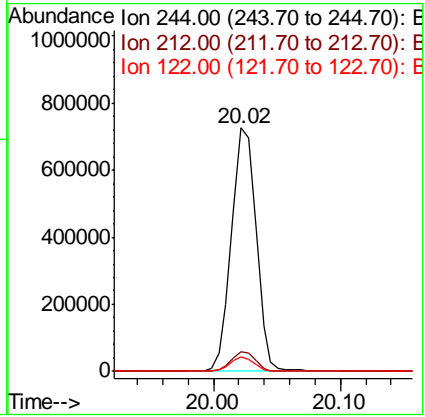
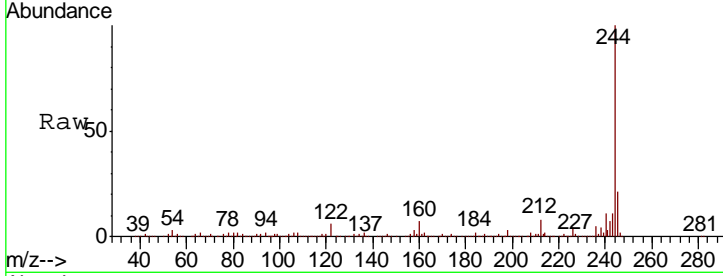




#79
 Terphenyl-d14
 Concen: 99.338 ng
 RT: 20.02 min Scan# 2882
 Delta R.T. -0.00 min
 Lab File: BG041521.D
 Acq: 28 Jun 2019 20:26

Instrument :
 BNA_G
 ClientSampled :
 SB-13-COMP

Tgt Ion	Ratio	Lower	Upper
244	100		
212	8.2	6.2	9.4
122	5.9	4.8	7.2



#87
 Perylene-d12
 Concen: 20.000 ng
 RT: 24.97 min Scan# 3725
 Delta R.T. -0.01 min
 Lab File: BG041521.D
 Acq: 28 Jun 2019 20:26

Tgt Ion	Ratio	Lower	Upper
264	100		
260	24.3	19.7	29.5
265	20.9	17.4	26.2

