

Data Path : Z:\svoasrv\HPCHEM1\BNA_G\Data\BG062922\
 Data File : BG054161.D
 Acq On : 30 Jun 2022 1:32
 Operator : CG/JU
 Sample : N3488-09
 Misc :
 ALS Vial : 16 Sample Multiplier: 1

Instrument :
 BNA_G
 ClientSampleId :
 SB-12-3-5-20220623

Integration Parameters: rteint.p
 Integrator: RTE
 Smoothing : ON
 Sampling : 1
 Start Thrs : 0.2
 Stop Thrs : 0
 Filtering: 5
 Min Area: 3 % of largest Peak
 Max Peaks: 100
 Peak Location: TOP

If leading or trailing edge < 100 prefer < Baseline drop else tangent >
 Peak separation: 5

Method : Z:\svoasrv\HPCHEM1\BNA_G\Methods\8270-BG061322.M
 Title : ASP BNA STANDARDS FOR 5 POINT CALIBRATION

Signal : TIC: BG054161.D\data.ms

peak #	R.T. min	first scan	max scan	last scan	PK TY	peak height	corr. area	corr. % max.	% of total
1	5.638	376	383	394	rVB	240642	414941	28.14%	2.516%
2	7.230	646	654	667	rBV	256942	464074	31.47%	2.814%
3	8.071	789	797	804	rBV	69395	125849	8.53%	0.763%
4	9.228	986	994	1006	rVB	163121	304184	20.63%	1.844%
5	10.879	1267	1275	1281	rBV	97802	185864	12.60%	1.127%
6	13.317	1683	1690	1699	rBV	537489	838149	56.84%	5.082%
7	14.692	1915	1924	1931	rBV	177139	289136	19.61%	1.753%
8	14.757	1931	1935	1941	rVB	20368	29665	2.01%	0.180%
9	15.092	1986	1992	1998	rBB3	13256	21140	1.43%	0.128%
10	15.738	2096	2102	2110	rBB2	13597	23839	1.62%	0.145%
11	16.032	2148	2152	2158	rVB	11865	18291	1.24%	0.111%
12	16.179	2169	2177	2188	rBV2	451898	729284	49.45%	4.422%
13	16.966	2303	2311	2315	rBV4	9588	18736	1.27%	0.114%
14	17.089	2326	2332	2340	rVB	22784	36648	2.49%	0.222%
15	17.254	2356	2360	2369	rVB	16956	27995	1.90%	0.170%
16	17.436	2383	2391	2395	rBV	235374	392938	26.65%	2.383%
17	17.477	2395	2398	2405	rVV	347437	533641	36.19%	3.236%
18	17.571	2405	2414	2420	rVV	95668	159751	10.83%	0.969%
19	17.836	2452	2459	2463	rBV2	18521	33429	2.27%	0.203%
20	17.959	2475	2480	2485	rVB3	12714	17639	1.20%	0.107%
21	18.018	2485	2490	2499	rVB6	11317	18194	1.23%	0.110%
22	18.317	2531	2541	2545	rBV	79018	139221	9.44%	0.844%
23	18.358	2545	2548	2556	rVB	80248	123198	8.35%	0.747%
24	18.441	2556	2562	2567	rBV	32961	50081	3.40%	0.304%
25	18.511	2567	2574	2577	rVV2	69040	133721	9.07%	0.811%
26	18.541	2577	2579	2586	rVB	46756	63644	4.32%	0.386%
27	18.805	2619	2624	2628	rBV	63332	97095	6.58%	0.589%
28	18.846	2628	2631	2637	rVV	40447	57261	3.88%	0.347%
29	19.052	2662	2666	2670	rVB2	17154	22982	1.56%	0.139%
30	19.140	2678	2681	2685	rVB3	11433	16006	1.09%	0.097%
31	19.228	2689	2696	2700	rBV	31634	60255	4.09%	0.365%
32	19.287	2701	2706	2709	rBV5	12259	20145	1.37%	0.122%
33	19.363	2715	2719	2728	rVB	49135	80853	5.48%	0.490%
34	19.487	2734	2740	2747	rBV	737641	1128700	76.54%	6.844%
35	19.586	2753	2757	2761	rVB2	20989	29777	2.02%	0.181%
36	19.680	2768	2773	2776	rBV7	15555	28425	1.93%	0.172%

Data Path : Z:\svoasrv\HPCHEM1\BNA_G\Data\BG062922\
 Data File : BG054161.D
 Acq On : 30 Jun 2022 1:32
 Operator : CG/JU
 Sample : N3488-09
 Misc :
 ALS Vial : 16 Sample Multiplier: 1

Instrument :
 BNA_G
 ClientSampleId :
 SB-12-3-5-20220623

Integration Parameters: rteint.p
 Integrator: RTE
 Smoothing : ON
 Sampling : 1
 Start Thrs : 0.2
 Stop Thrs : 0
 Filtering: 5
 Min Area: 3 % of largest Peak
 Max Peaks: 100
 Peak Location: TOP

If leading or trailing edge < 100 prefer < Baseline drop else tangent >
 Peak separation: 5

Method : Z:\svoasrv\HPCHEM1\BNA_G\Methods\8270-BG061322.M
 Title : ASP BNA STANDARDS FOR 5 POINT CALIBRATION

37	19.733	2778	2782	2790	rVV3	34085	65699	4.46%	0.398%
38	19.816	2790	2796	2798	rVV	145527	217985	14.78%	1.322%
39	19.851	2798	2802	2809	rVV	693604	1021363	69.26%	6.193%
40	19.921	2809	2814	2820	rVB2	40619	69054	4.68%	0.419%
41	20.045	2826	2835	2840	rBV	1041328	1474670	100.00%	8.942%
42	20.086	2840	2842	2847	rVB	29523	40237	2.73%	0.244%
43	20.180	2850	2858	2863	rBV2	50805	134179	9.10%	0.814%
44	20.309	2874	2880	2881	rBV5	37314	61195	4.15%	0.371%
45	20.339	2882	2885	2890	rVB	62921	93263	6.32%	0.565%
46	20.438	2897	2902	2906	rBV2	27464	40473	2.74%	0.245%
47	20.497	2906	2912	2916	rVV2	69002	137093	9.30%	0.831%
48	20.538	2916	2919	2922	rVV	21124	30332	2.06%	0.184%
49	20.579	2922	2926	2929	rVV3	16423	25992	1.76%	0.158%
50	20.638	2931	2936	2939	rBV	42004	60362	4.09%	0.366%
51	20.685	2939	2944	2946	rVV2	47574	79146	5.37%	0.480%
52	20.720	2946	2950	2957	rVV	166033	238695	16.19%	1.447%
53	20.797	2960	2963	2967	rVB4	16790	24879	1.69%	0.151%
54	20.897	2976	2980	2982	rBV5	11491	17776	1.21%	0.108%
55	21.102	3010	3015	3022	rVB	74021	119143	8.08%	0.722%
56	21.284	3038	3046	3051	rBV2	54780	136424	9.25%	0.827%
57	21.343	3051	3056	3060	rVV2	105938	219531	14.89%	1.331%
58	21.384	3060	3063	3068	rVV2	66705	128728	8.73%	0.781%
59	21.437	3068	3072	3081	rVB	65717	125444	8.51%	0.761%
60	21.578	3087	3096	3101	rBV2	16518	51905	3.52%	0.315%
61	21.702	3110	3117	3123	rBV3	411485	1066580	72.33%	6.467%
62	21.760	3123	3127	3140	rVB	301474	550051	37.30%	3.335%
63	21.913	3148	3153	3160	rVB2	35633	68888	4.67%	0.418%
64	22.125	3183	3189	3195	rBV2	37024	79471	5.39%	0.482%
65	22.189	3195	3200	3204	rVB8	13282	23911	1.62%	0.145%
66	22.366	3227	3230	3235	rBV3	13884	27752	1.88%	0.168%
67	22.454	3239	3245	3251	rVV	49694	110849	7.52%	0.672%
68	22.524	3252	3257	3263	rVB	34497	66575	4.51%	0.404%
69	22.730	3286	3292	3296	rBV2	22596	50585	3.43%	0.307%
70	22.865	3310	3315	3328	rVB6	25828	77706	5.27%	0.471%
71	23.124	3355	3359	3362	rBV5	9034	15278	1.04%	0.093%
72	23.564	3422	3434	3444	rBV5	22026	81982	5.56%	0.497%
73	23.940	3488	3498	3506	rBV	196129	725720	49.21%	4.400%
74	24.193	3534	3541	3551	rBV2	35704	90828	6.16%	0.551%
75	24.410	3572	3578	3581	rBV8	12500	26948	1.83%	0.163%
76	24.669	3614	3622	3635	rVB2	115757	371109	25.17%	2.250%

Data Path : Z:\svoasrv\HPCHEM1\BNA_G\Data\BG062922\
Data File : BG054161.D
Acq On : 30 Jun 2022 1:32
Operator : CG/JU
Sample : N3488-09
Misc :
ALS Vial : 16 Sample Multiplier: 1

Instrument :
BNA_G
ClientSampleId :
SB-12-3-5-20220623

Integration Parameters: rteint.p
Integrator: RTE
Smoothing : ON Filtering: 5
Sampling : 1 Min Area: 3 % of largest Peak
Start Thrs: 0.2 Max Peaks: 100
Stop Thrs : 0 Peak Location: TOP

If leading or trailing edge < 100 prefer < Baseline drop else tangent >
Peak separation: 5

Method : Z:\svoasrv\HPCHEM1\BNA_G\Methods\8270-BG061322.M
Title : ASP BNA STANDARDS FOR 5 POINT CALIBRATION

77	24.816	3637	3647	3661	rVB	176389	517526	35.09%	3.138%
78	24.968	3663	3673	3681	rBV	159359	487073	33.03%	2.953%
79	28.688	4294	4306	4330	rVB2	79367	423028	28.69%	2.565%
80	29.857	4490	4505	4519	rBV3	57388	282082	19.13%	1.710%

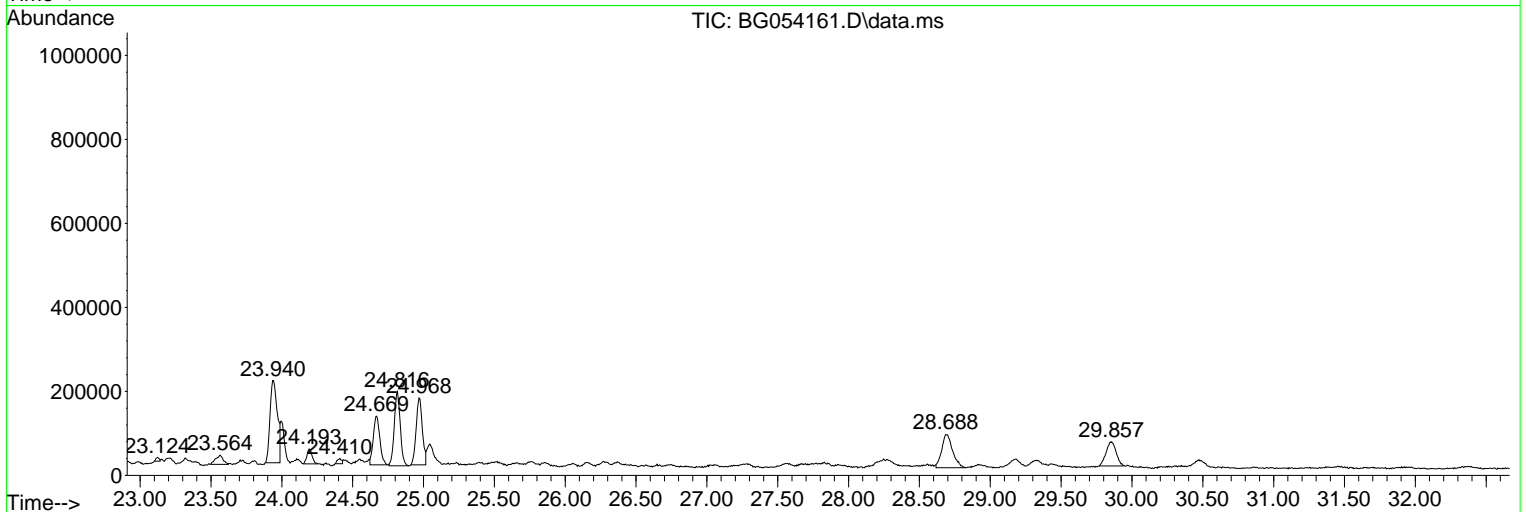
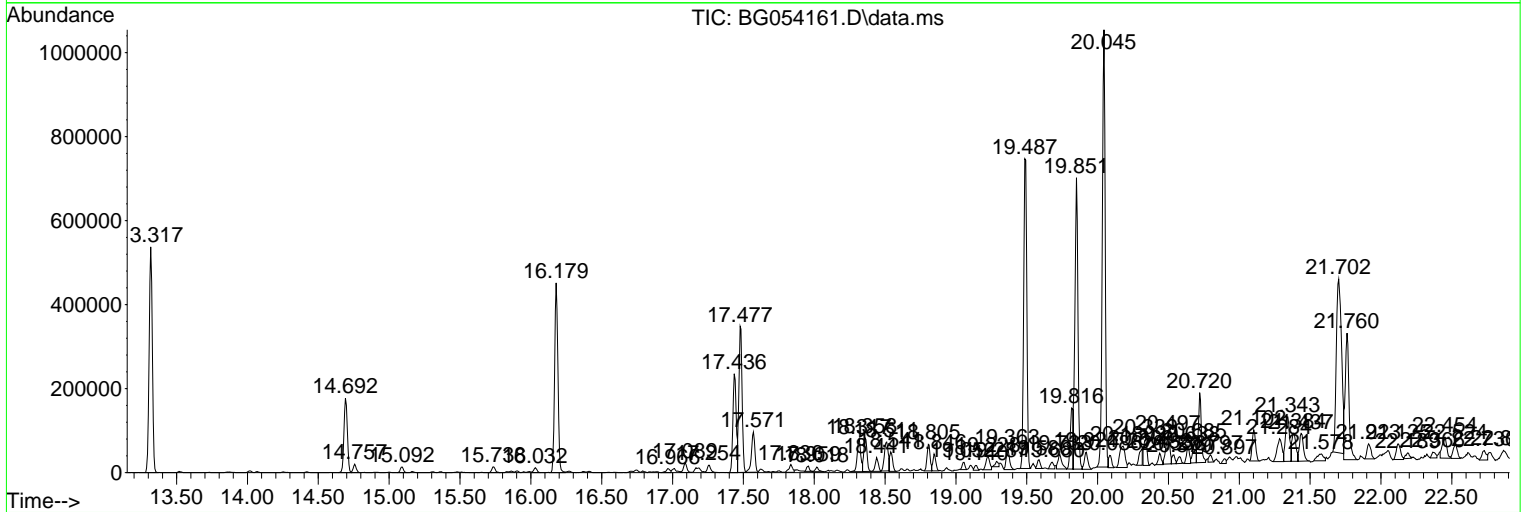
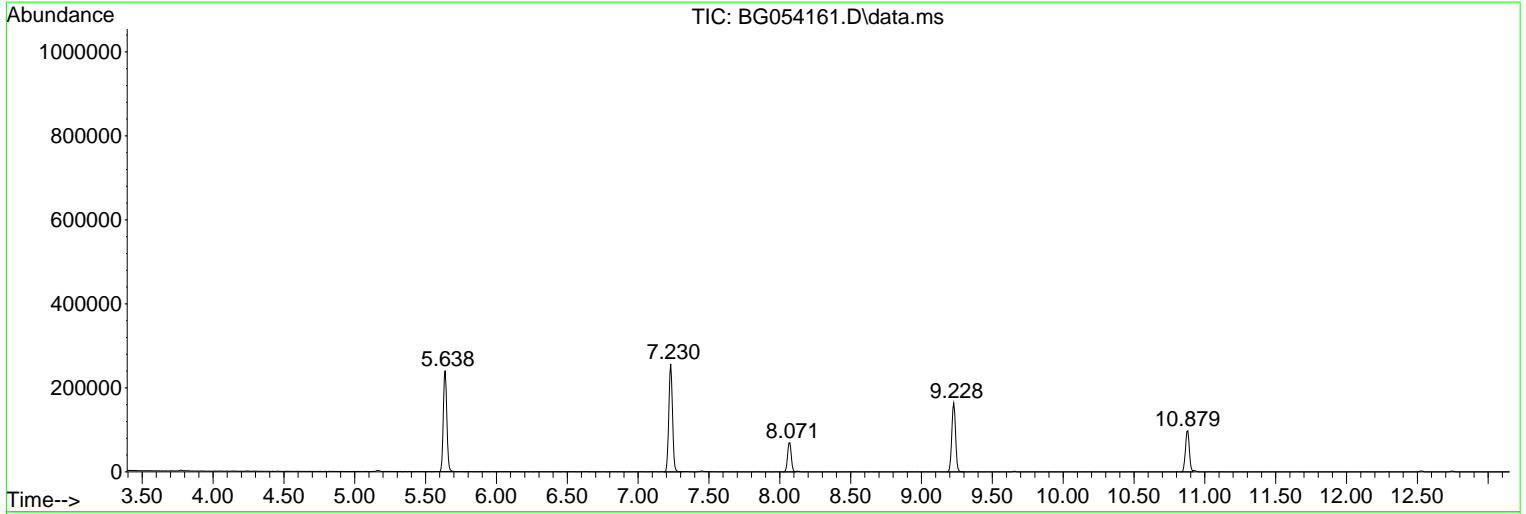
Sum of corrected areas: 16492261

Data Path : Z:\svoasrv\HPCHEM1\BNA_G\Data\BG062922\
 Data File : BG054161.D
 Acq On : 30 Jun 2022 1:32
 Operator : CG/JU
 Sample : N3488-09
 Misc :
 ALS Vial : 16 Sample Multiplier: 1

Instrument :
 BNA_G
ClientSampleId :
 SB-12-3-5-20220623

Quant Method : Z:\svoasrv\HPCHEM1\BNA_G\Methods\8270-BG061322.M
 Quant Title : ASP BNA STANDARDS FOR 5 POINT CALIBRATION

TIC Library :
 TIC Integration Parameters: rteint.p



Data Path : Z:\svoasrv\HPCHEM1\BNA_G\Data\BG062922\
Data File : BG054161.D
Acq On : 30 Jun 2022 1:32
Operator : CG/JU
Sample : N3488-09
Misc :
ALS Vial : 16 Sample Multiplier: 1

Instrument :
BNA_G
ClientSampleId :
SB-12-3-5-20220623

Quant Method : Z:\svoasrv\HPCHEM1\BNA_G\Methods\8270-BG061322.M
Quant Title : ASP BNA STANDARDS FOR 5 POINT CALIBRATION

TIC Library :
TIC Integration Parameters: rteint.p

No Library Search Compounds Detected

Data Path : Z:\svoasrv\HPCHEM1\BNA_G\Data\BG062922\
Data File : BG054161.D
Acq On : 30 Jun 2022 1:32
Operator : CG/JU
Sample : N3488-09
Misc :
ALS Vial : 16 Sample Multiplier: 1

Instrument :
BNA_G
ClientSampleId :
SB-12-3-5-20220623

Quant Method : Z:\svoasrv\HPCHEM1\BNA_G\Methods\8270-BG061322.M
Quant Title : ASP BNA STANDARDS FOR 5 POINT CALIBRATION

TIC Library :
TIC Integration Parameters: rteint.p

TIC Top Hit name	RT	EstConc	Units	Response	#	RT	Resp	Conc
------------------	----	---------	-------	----------	---	----	------	------
