

Data Path : Z:\SVOASRV\HPCHEM1\BNA G\DATA\BG063018\
 Data File : BG035541.D
 Acq On : 30 Jun 2018 14:12
 Operator : JU/SJ
 Sample : J3757-08
 Misc :
 ALS Vial : 25 Sample Multiplier: 1

Instrument :
 BNA_G
 ClientSampleId :
 062618-TIPC-E-U-M

Integration Parameters: rteint.p
 Integrator: RTE
 Smoothing : ON Filtering: 5
 Sampling : 1 Min Area: 3 % of largest Peak
 Start Thrs: 0.2 Max Peaks: 100
 Stop Thrs : 0 Peak Location: TOP

If leading or trailing edge < 100 prefer < Baseline drop else tangent >
 Peak separation: 5

Method : Z:\SVOASRV\HPCHEM1\BNA G\METHODS\8270-BG060718.M
 Title : ASP BNA STANDARDS FOR 5 POINT CALIBRATION

Signal : TIC

peak #	R.T. min	first scan	max scan	last scan	PK TY	peak height	corr. area	corr. % max.	% of total
1	5.644	393	401	410	rBV	177966	292797	9.43%	2.425%
2	7.224	662	670	680	rBV	126961	234739	7.56%	1.944%
3	7.600	725	734	742	rBV	329921	580805	18.70%	4.811%
4	8.064	806	813	821	rBV	128211	208777	6.72%	1.729%
5	8.387	860	868	876	rVB	481637	835060	26.89%	6.917%
6	9.227	1003	1011	1022	rBV	400803	741621	23.88%	6.143%
7	10.866	1281	1290	1299	rBV	152189	278528	8.97%	2.307%
8	13.310	1698	1706	1716	rBV	1162365	1869281	60.19%	15.483%
9	14.126	1837	1845	1853	rBV	95522	139322	4.49%	1.154%
10	14.684	1932	1940	1949	rBV2	279064	467809	15.06%	3.875%
11	15.965	2153	2158	2164	rVB	68061	85699	2.76%	0.710%
12	16.165	2186	2192	2210	rBV	663997	1030304	33.18%	8.534%
13	17.422	2399	2406	2413	rBV	406080	626542	20.18%	5.190%
14	18.303	2550	2556	2565	rBV3	30618	47761	1.54%	0.396%
15	20.030	2843	2850	2856	rBV	2369078	3105515	100.00%	25.723%
16	21.328	3066	3071	3078	rBV	54788	93959	3.03%	0.778%
17	21.693	3126	3133	3141	rBV2	439279	741882	23.89%	6.145%
18	24.918	3669	3682	3693	rBV2	241237	692508	22.30%	5.736%

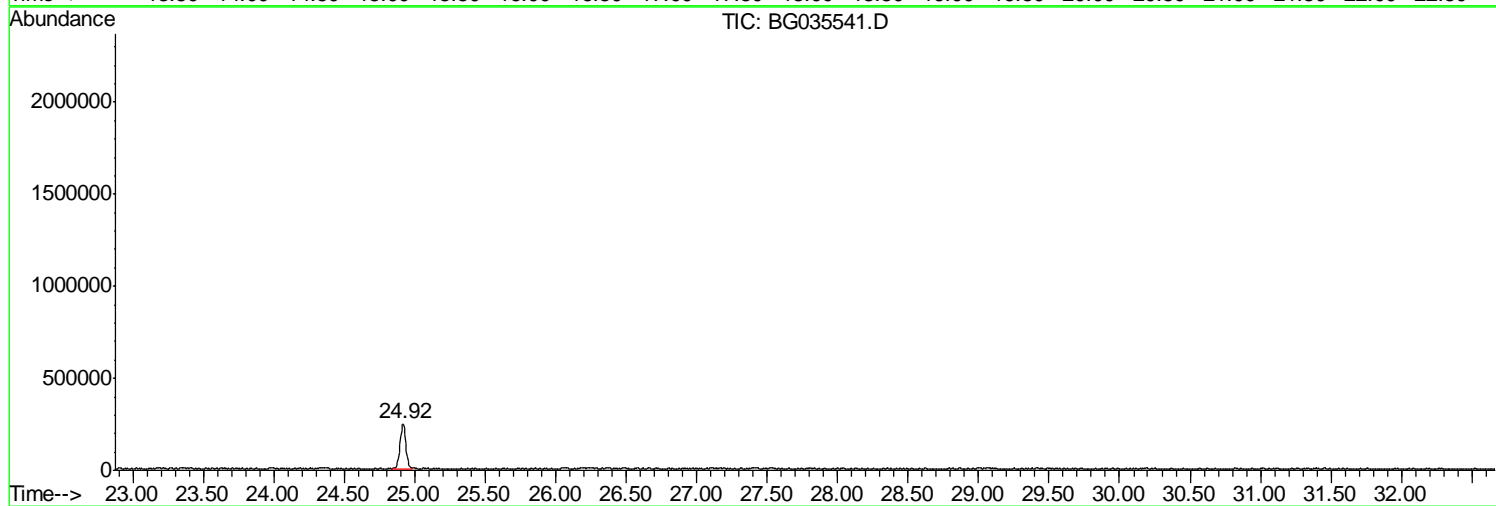
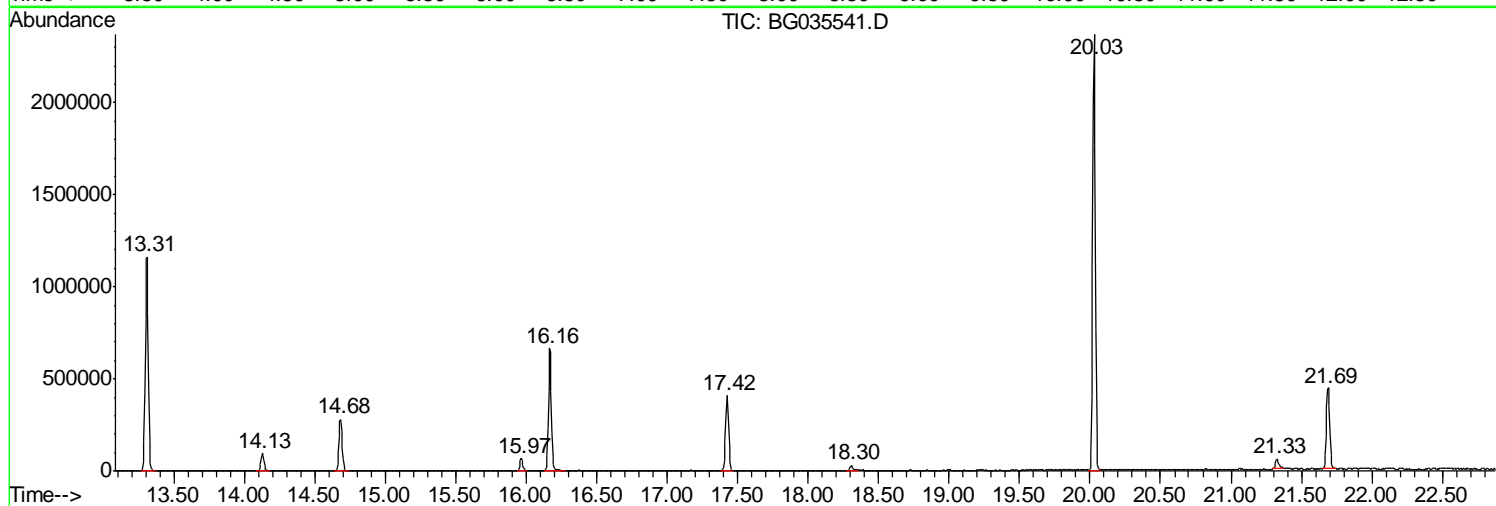
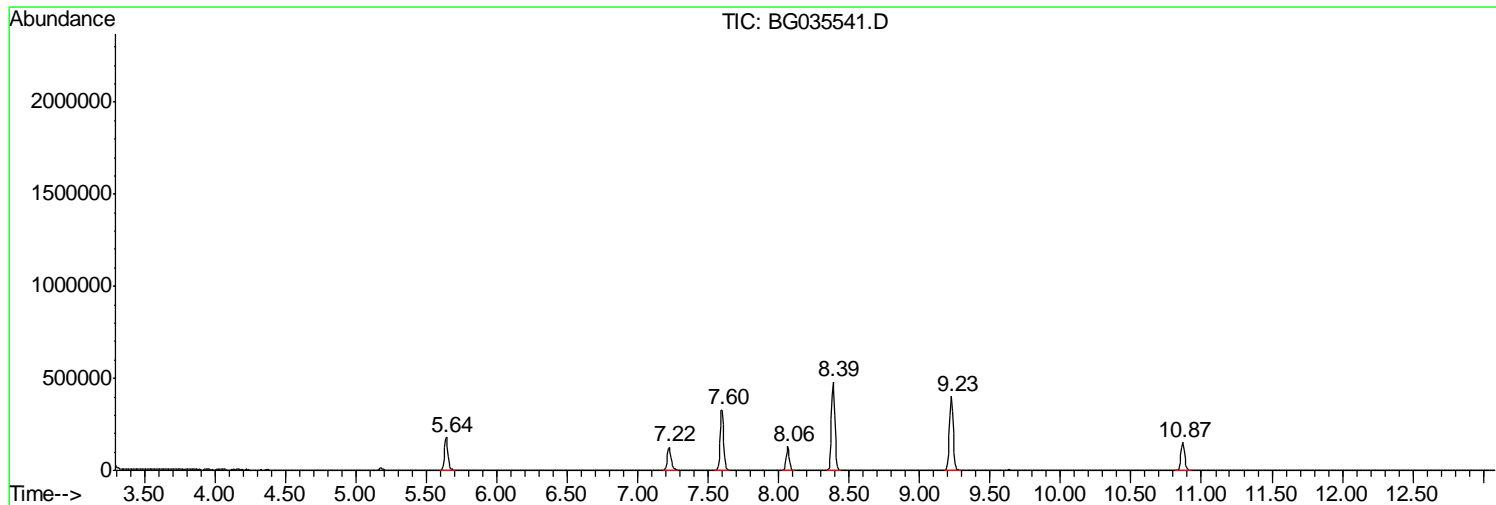
Sum of corrected areas: 12072909

Data Path : Z:\SVOASRV\HPCHEM1\BNA G\DATA\BG063018\
Data File : BG035541.D
Acq On : 30 Jun 2018 14:12
Operator : JU/SJ
Sample : J3757-08
Misc :
ALS Vial : 25 Sample Multiplier: 1

Instrument :
BNA_G
ClientSampleId :
062618-TIPC-E-U-M

Quant Method : Z:\SVOASRV\HPCHEM1\BNA G\METHODS\8270-BG060718.M
Quant Title : ASP BNA STANDARDS FOR 5 POINT CALIBRATION

TIC Library : C:\Database\NIST11.L
TIC Integration Parameters: LSCINT.P



Data Path : Z:\SVOASRV\HPCHEM1\BNA G\DATA\BG063018\
 Data File : BG035541.D
 Acq On : 30 Jun 2018 14:12
 Operator : JU/SJ
 Sample : J3757-08
 Misc :
 ALS Vial : 25 Sample Multiplier: 1

Instrument :
 BNA_G
 ClientSampleId :
 062618-TIPC-E-U-M

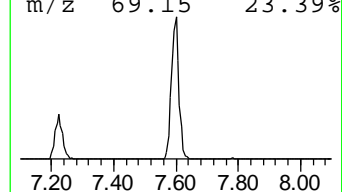
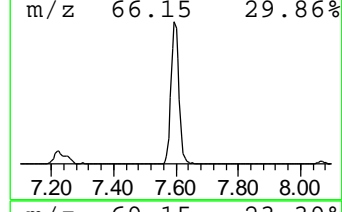
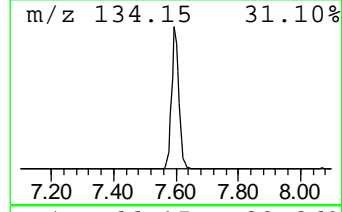
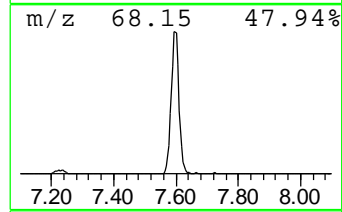
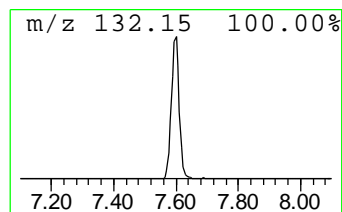
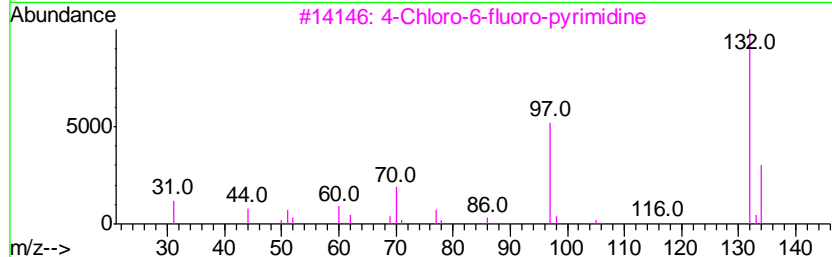
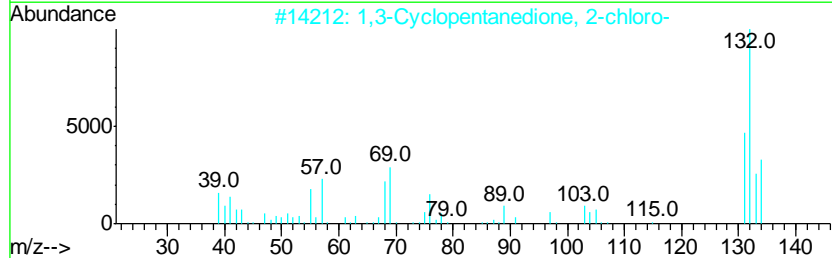
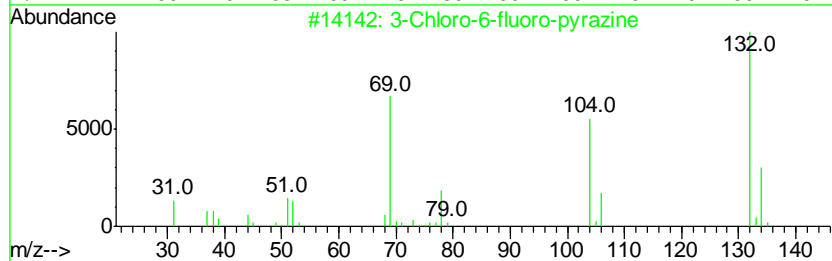
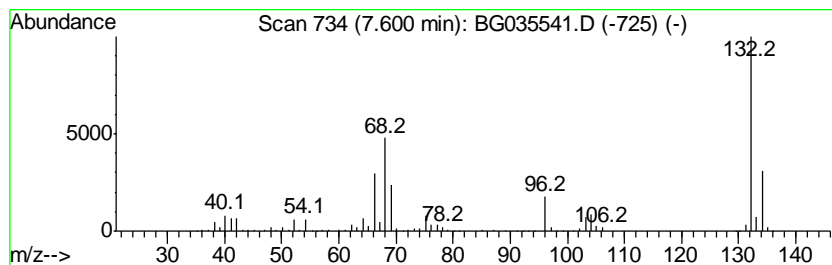
Quant Method : Z:\SVOASRV\HPCHEM1\BNA G\METHODS\8270-BG060718.M
 Quant Title : ASP BNA STANDARDS FOR 5 POINT CALIBRATION

TIC Library : C:\Database\NIST11.L
 TIC Integration Parameters: LSCINT.P

 Peak Number 1 unknown7.60 Concentration Rank 2

R.T.	EstConc	Area	Relative to ISTD	R.T.
7.60	55.64 ng	580805	1,4-Dichlorobenzene-d4	8.06

Hit#	of	Tentative ID	MW	MolForm	CAS#	Qual
1	5	3-Chloro-6-fluoro-pyrazine	132	C4H2ClFN2	1000146-10-7	27
2		1,3-Cyclopentanedione, 2-chloro-	132	C5H5ClO2	014203-19-1	25
3		4-Chloro-6-fluoro-pyrimidine	132	C4H2ClFN2	051422-01-6	16
4		Tranvlcypromine-propionyl	189	C12H15NO	1000123-86-3	12
5		5-Fluoro-2-chloropyrimidine	132	C4H2ClFN2	062802-42-0	12



Data Path : Z:\SVOASRV\HPCHEM1\BNA G\DATA\BG063018\
 Data File : BG035541.D
 Acq On : 30 Jun 2018 14:12
 Operator : JU/SJ
 Sample : J3757-08
 Misc :
 ALS Vial : 25 Sample Multiplier: 1

Instrument :
 BNA_G
 ClientSampleID :
 062618-TIPC-E-U-M

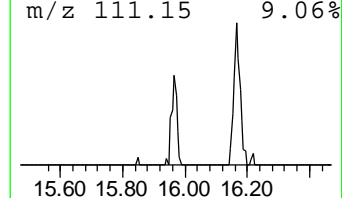
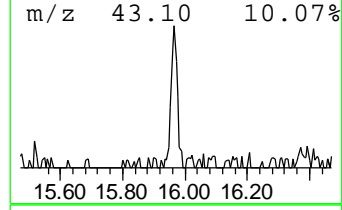
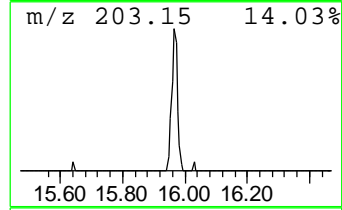
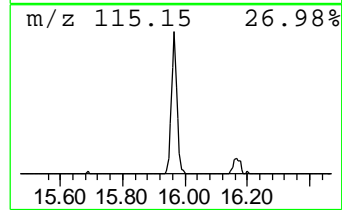
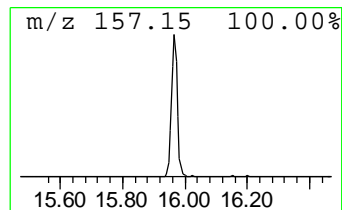
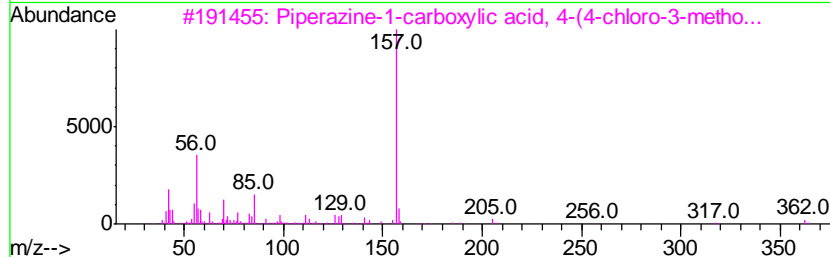
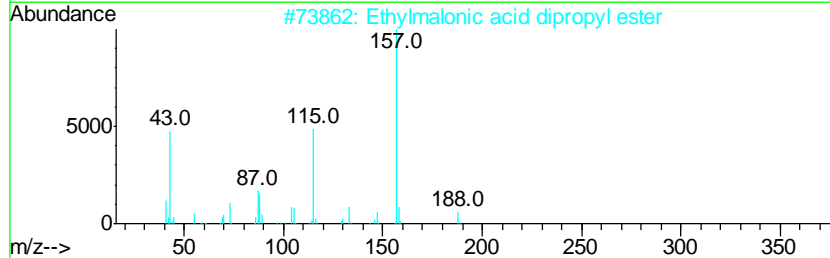
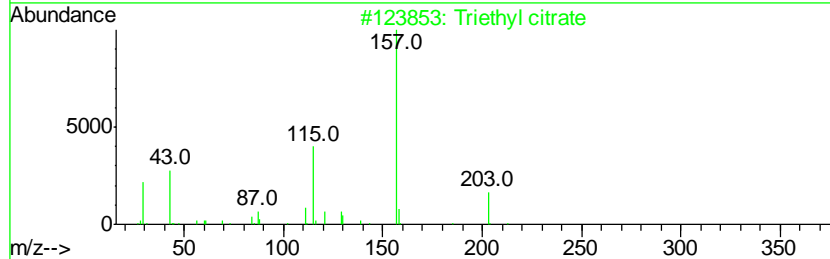
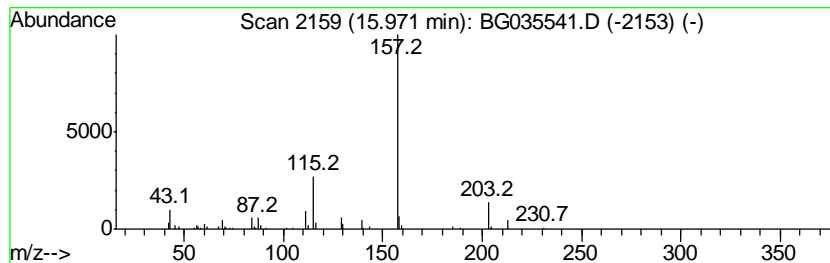
Quant Method : Z:\SVOASRV\HPCHEM1\BNA G\METHODS\8270-BG060718.M
 Quant Title : ASP BNA STANDARDS FOR 5 POINT CALIBRATION

TIC Library : C:\Database\NIST11.L
 TIC Integration Parameters: LSCINT.P

 Peak Number 3 Triethyl citrate Concentration Rank 3

R.T.	EstConc	Area	Relative to ISTD	R.T.
15.97	3.66 ng	85699	Acenaphthene-d10	14.68

Hit#	of	Tentative ID	MW	MolForm	CAS#	Qual
1	5	Triethyl citrate	276	C12H20O7	000077-93-0	74
2		Ethylmalonic acid dipropyl ester	216	C11H20O4	001113-91-3	64
3		Piperazine-1-carboxylic acid, 4-...	362	C14H19ClN2O5S	1000303-79-9	40
4		3-Chloro2-fluorobenzoic acid, 5-...	384	C22H34ClFO2	1000338-65-2	36
5		3-Chloro2-fluorobenzoic acid, 4-...	370	C21H32ClFO2	1000338-64-7	36



Data Path : Z:\SVOASRV\HPCHEM1\BNA G\DATA\BG063018\
 Data File : BG035541.D
 Acq On : 30 Jun 2018 14:12
 Operator : JU/SJ
 Sample : J3757-08
 Misc :
 ALS Vial : 25 Sample Multiplier: 1

Instrument :
 BNA_G
 ClientSampled :
 062618-TIPC-E-U-M

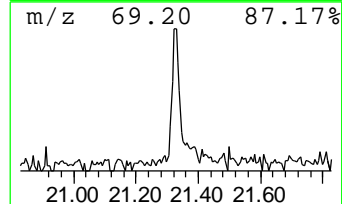
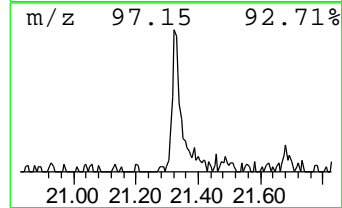
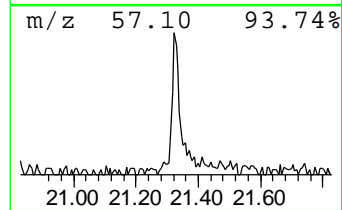
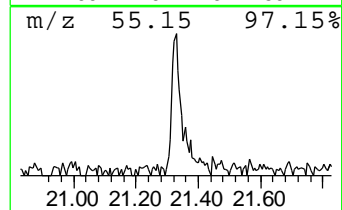
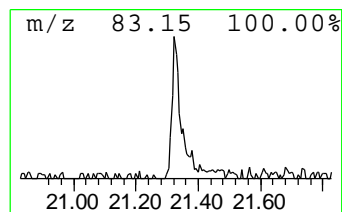
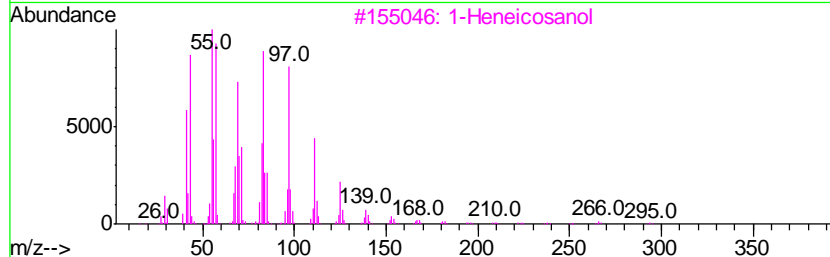
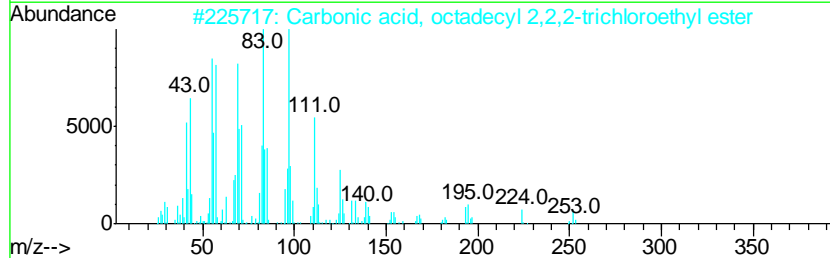
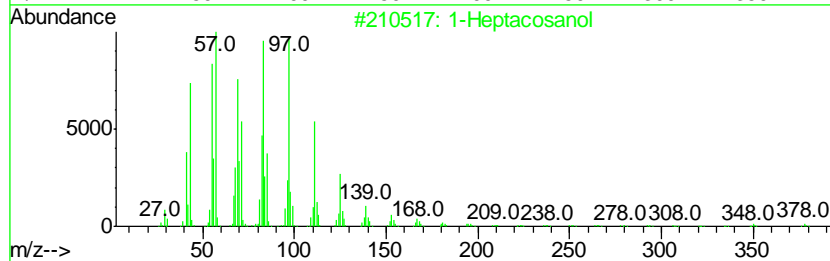
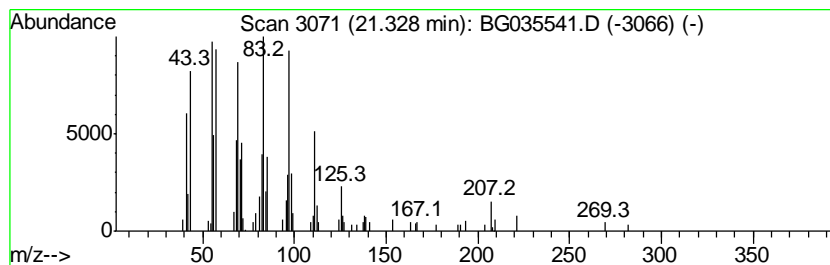
Quant Method : Z:\SVOASRV\HPCHEM1\BNA G\METHODS\8270-BG060718.M
 Quant Title : ASP BNA STANDARDS FOR 5 POINT CALIBRATION

TIC Library : C:\Database\NIST11.L
 TIC Integration Parameters: LSCINT.P

 Peak Number 4 1-Heptacosanol Concentration Rank 4

R.T.	EstConc	Area	Relative to ISTD	R.T.
21.33	2.53 ng	93959	Chrysene-d12	21.69

Hit#	of	Tentative ID	MW	MolForm	CAS#	Qual
1	5	1-Heptacosanol	396	C27H56O	002004-39-9	91
2		Carbonic acid, octadecyl 2,2,2-t...	444	C21H39Cl3O3	1000314-56-3	90
3		1-Heneicosanol	312	C21H44O	015594-90-8	87
4		Trifluoroacetoxy hexadecane	338	C18H33F3O2	006222-03-3	87
5		Chloroacetic acid, tetradecyl ester	290	C16H31ClO2	018277-86-6	87



Data Path : Z:\SVOASRV\HPCHEM1\BNA_G\DATA\BG063018\
Data File : BG035541.D
Acq On : 30 Jun 2018 14:12
Operator : JU/SJ
Sample : J3757-08
Misc :
ALS Vial : 25 Sample Multiplier: 1

Instrument :
BNA_G
ClientSampleId :
062618-TIPC-E-U-M

Quant Method : Z:\SVOASRV\HPCHEM1\BNA_G\METHODS\8270-BG060718.M
Quant Title : ASP BNA STANDARDS FOR 5 POINT CALIBRATION

TIC Library : C:\Database\NIST11.L
TIC Integration Parameters: LSCINT.P

TIC Top Hit name	RT	EstConc	Units	Response	--Internal Standard--			
					#	RT	Resp	Conc
unknown7.60	7.60	55.6	ng	580805	1	8.06	208777	20.0
Triethyl citrate	15.97	3.7	ng	85699	3	14.68	467809	20.0
1-Heptacosanol	21.33	2.5	ng	93959	5	21.69	741882	20.0