

Data Path : Z:\SVOASRV\HPCHEM1\BNA G\DATA\BG063020\
 Data File : BG045887.D
 Acq On : 30 Jun 2020 16:45
 Operator : CG/JU
 Sample : L3153-04
 Misc :
 ALS Vial : 7 Sample Multiplier: 1

Instrument :
 BNA_G
 ClientSampled :
 SP1-B

Integration Parameters: rteint.p
 Integrator: RTE
 Smoothing : ON Filtering: 5
 Sampling : 1 Min Area: 3 % of largest Peak
 Start Thrs: 0.2 Max Peaks: 100
 Stop Thrs : 0 Peak Location: TOP

If leading or trailing edge < 100 prefer < Baseline drop else tangent >
 Peak separation: 5

Method : Z:\SVOASRV\HPCHEM1\BNA G\METHODS\8270-BG061520.M
 Title : ASP BNA STANDARDS FOR 5 POINT CALIBRATION

Signal : TIC

peak #	R.T. min	first scan	max scan	last scan	PK TY	peak height	corr. area	corr. % max.	% of total
1	5.497	402	410	421	rBV	723092	1271756	36.08%	5.875%
2	7.112	678	685	705	rBV	773878	1432162	40.63%	6.617%
3	7.894	810	818	828	rBV	200295	353593	10.03%	1.634%
4	8.217	864	873	883	rBV	694138	1239100	35.15%	5.725%
5	9.057	1008	1016	1028	rBV	514048	986421	27.98%	4.557%
6	10.702	1288	1296	1306	rBV	259897	482095	13.68%	2.227%
7	13.163	1708	1715	1725	rBV	1481755	2368164	67.18%	10.941%
8	13.997	1852	1857	1864	rVB	234869	356114	10.10%	1.645%
9	14.508	1939	1944	1946	rBV3	44761	66718	1.89%	0.308%
10	14.549	1946	1951	1959	rVB	411502	659566	18.71%	3.047%
11	16.047	2194	2206	2215	rBV	1232481	1929127	54.72%	8.912%
12	17.299	2410	2419	2425	rBV	542844	827235	23.47%	3.822%
13	18.961	2698	2702	2706	rBV2	24528	37521	1.06%	0.173%
14	19.825	2845	2849	2855	rBV	288652	387412	10.99%	1.790%
15	19.918	2859	2865	2874	rBV	2669867	3525203	100.00%	16.286%
16	20.336	2931	2936	2939	rVB	60342	77220	2.19%	0.357%
17	20.770	3005	3010	3014	rBV	289445	361498	10.25%	1.670%
18	21.035	3050	3055	3060	rBV	139595	197810	5.61%	0.914%
19	21.211	3081	3085	3094	rVB	252924	392212	11.13%	1.812%
20	21.557	3137	3144	3152	rVB	531466	852526	24.18%	3.939%
21	21.751	3174	3177	3183	rBV4	28752	43075	1.22%	0.199%
22	21.986	3214	3217	3222	rVB7	28758	41782	1.19%	0.193%
23	22.362	3272	3281	3291	rBV4	161704	415547	11.79%	1.920%
24	23.008	3387	3391	3398	rVB4	46745	79811	2.26%	0.369%
25	23.343	3443	3448	3455	rVB6	60927	113602	3.22%	0.525%
26	23.784	3516	3523	3530	rBV	263910	577256	16.38%	2.667%
27	23.848	3530	3534	3544	rVB6	76953	182115	5.17%	0.841%
28	24.671	3665	3674	3688	rVB	321743	976375	27.70%	4.511%
29	25.194	3756	3763	3774	rVB5	89788	234818	6.66%	1.085%
30	25.781	3854	3863	3874	rVB4	205252	617776	17.52%	2.854%
31	25.910	3878	3885	3898	rVB8	50744	177205	5.03%	0.819%
32	29.770	4533	4542	4557	rVB8	82116	382426	10.85%	1.767%

Data Path : Z:\SVOASRV\HPCHEM1\BNA G\DATA\BG063020\
Data File : BG045887.D
Acq On : 30 Jun 2020 16:45
Operator : CG/JU
Sample : L3153-04
Misc :
ALS Vial : 7 Sample Multiplier: 1

Instrument :
BNA_G
ClientSampleId :
SP1-B

Integration Parameters: rteint.p
Integrator: RTE
Smoothing : ON Filtering: 5
Sampling : 1 Min Area: 3 % of largest Peak
Start Thrs: 0.2 Max Peaks: 100
Stop Thrs : 0 Peak Location: TOP

If leading or trailing edge < 100 prefer < Baseline drop else tangent >
Peak separation: 5

Method : Z:\SVOASRV\HPCHEM1\BNA G\METHODS\8270-BG061520.M
Title : ASP BNA STANDARDS FOR 5 POINT CALIBRATION

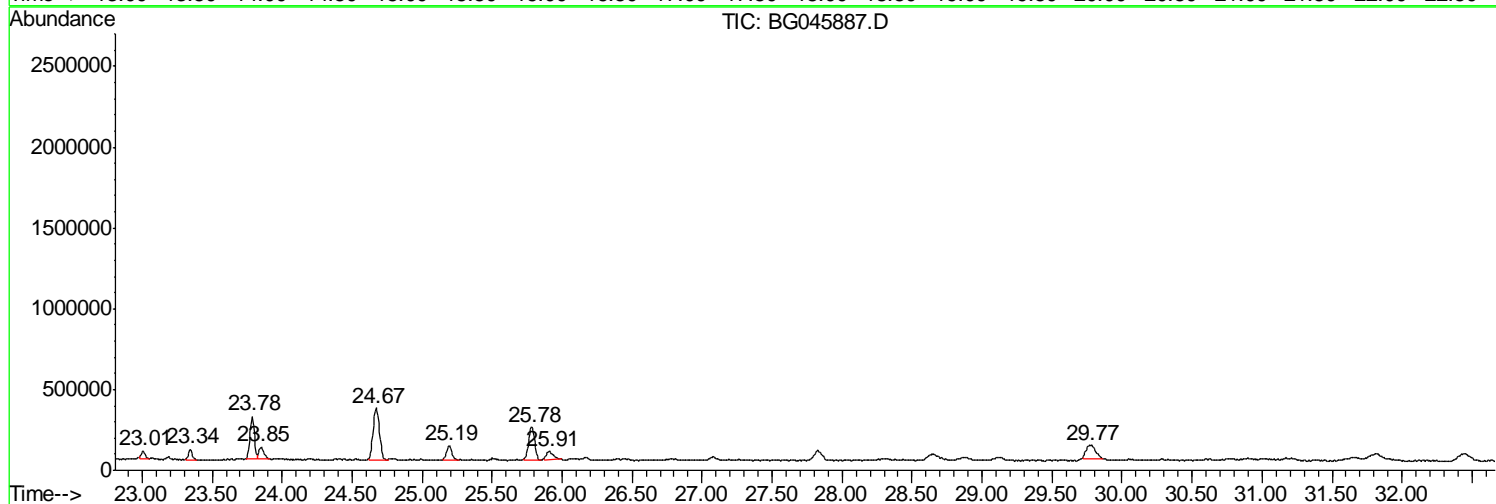
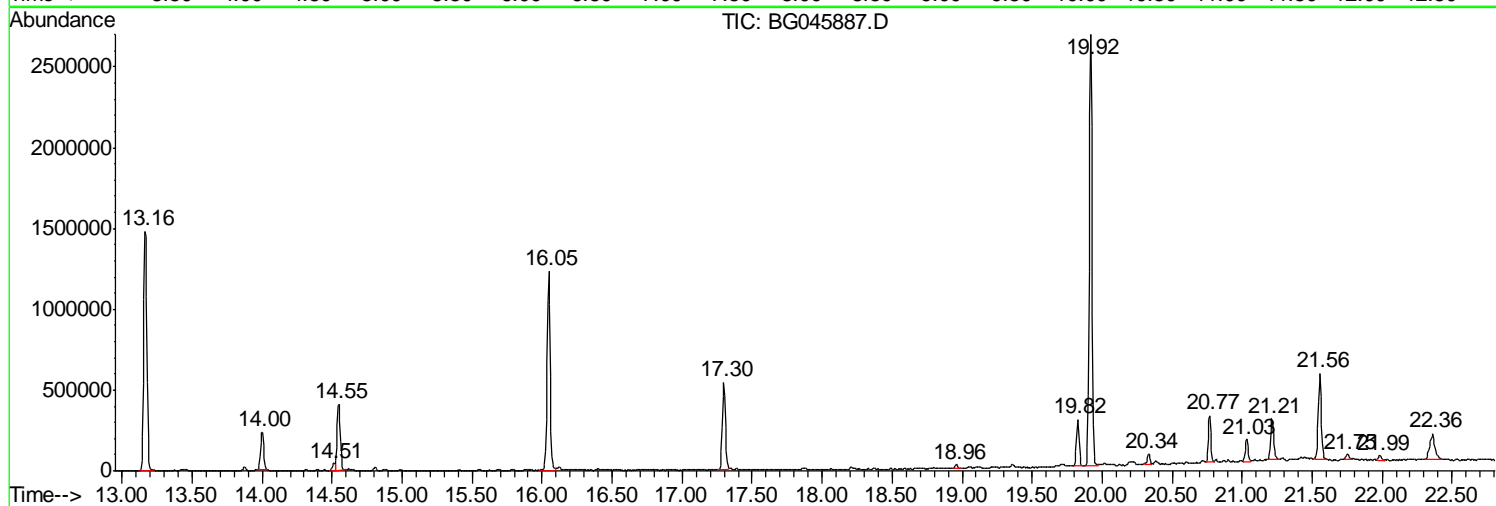
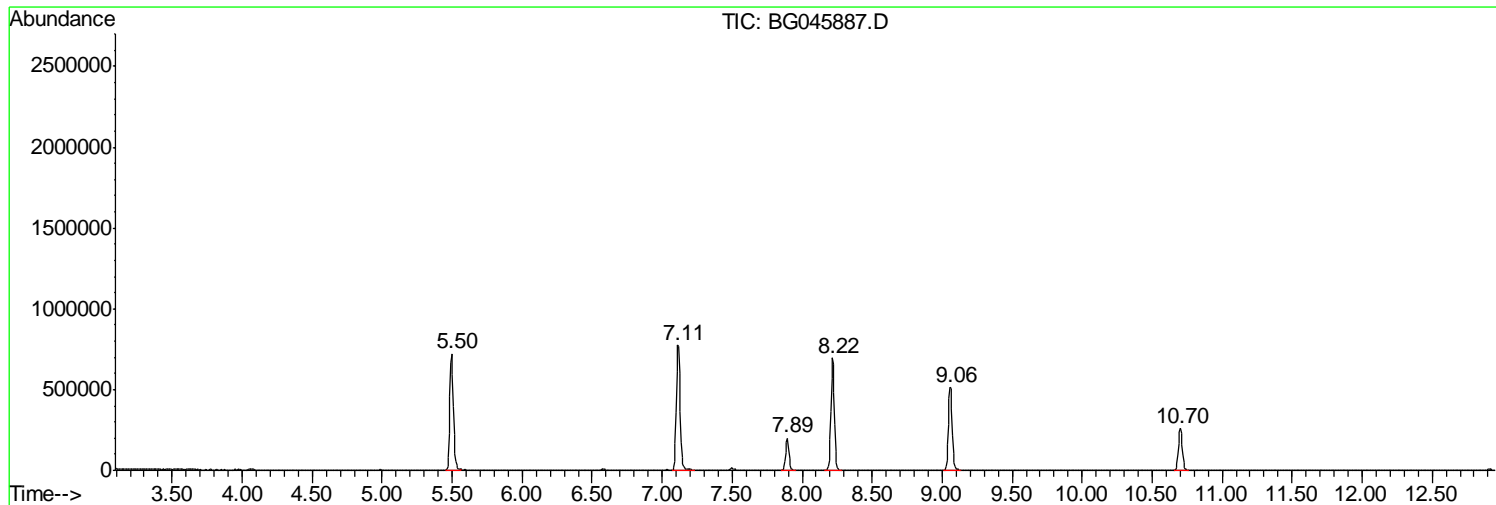
Sum of corrected areas: 21645241

Data Path : Z:\SVOASRV\HPCHEM1\BNA G\DATA\BG063020\
Data File : BG045887.D
Acq On : 30 Jun 2020 16:45
Operator : CG/JU
Sample : L3153-04
Misc :
ALS Vial : 7 Sample Multiplier: 1

Instrument :
BNA_G
ClientSampleId :
SP1-B

Quant Method : Z:\SVOASRV\HPCHEM1\BNA G\METHODS\8270-BG061520.M
Quant Title : ASP BNA STANDARDS FOR 5 POINT CALIBRATION

TIC Library : C:\Database\NIST11.L
TIC Integration Parameters: LSCINT.P



Data Path : Z:\SVOASRV\HPCHEM1\BNA G\DATA\BG063020\
 Data File : BG045887.D
 Acq On : 30 Jun 2020 16:45
 Operator : CG/JU
 Sample : L3153-04
 Misc :
 ALS Vial : 7 Sample Multiplier: 1

Instrument :
 BNA_G
 ClientSampled :
 SP1-B

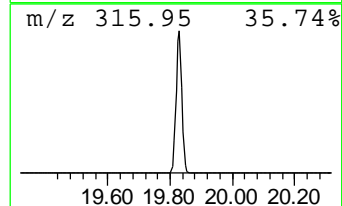
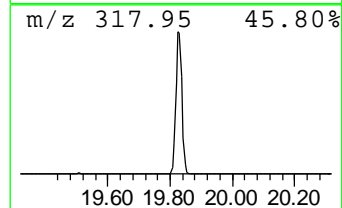
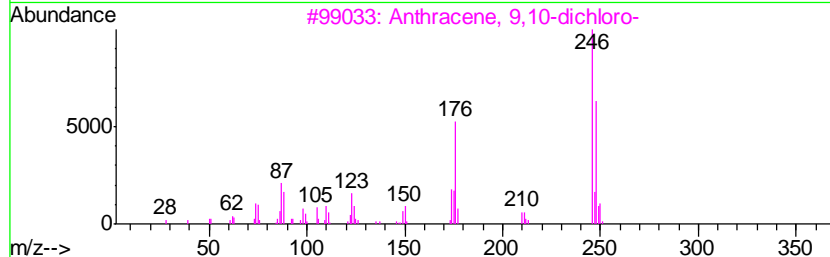
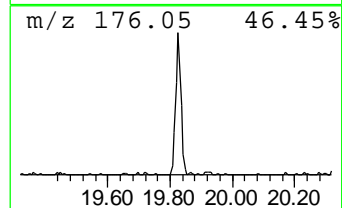
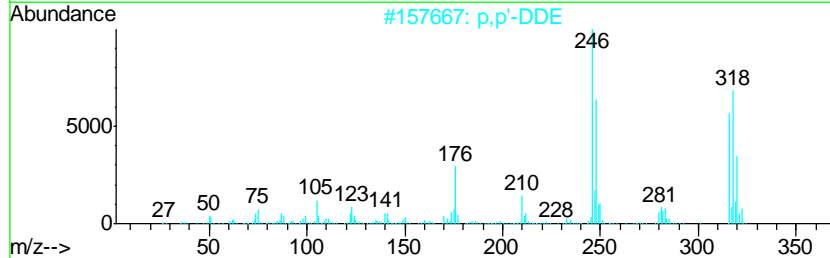
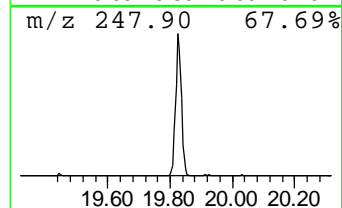
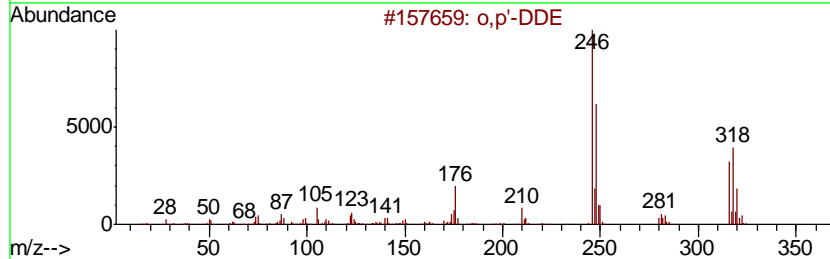
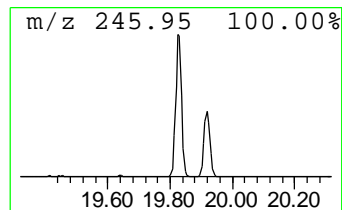
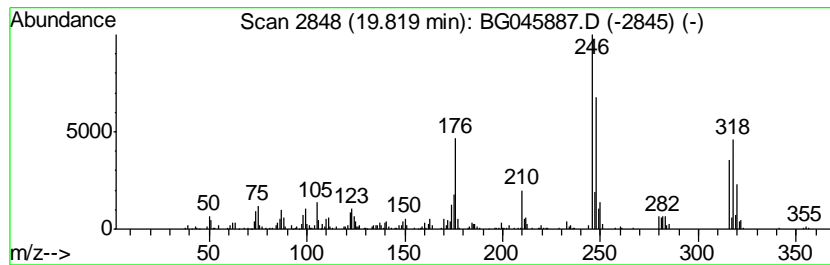
Quant Method : Z:\SVOASRV\HPCHEM1\BNA G\METHODS\8270-BG061520.M
 Quant Title : ASP BNA STANDARDS FOR 5 POINT CALIBRATION

TIC Library : C:\Database\NIST11.L
 TIC Integration Parameters: LSCINT.P

 Peak Number 2 o,p'-DDE Concentration Rank 6

R.T.	EstConc	Area	Relative to ISTD	R.T.
19.82	9.09 ng	387412	Chrysene-d12	21.56

Hit#	of	Tentative ID	MW	MolForm	CAS#	Qual
1	5	o,p'-DDE	316	C14H8Cl4	003424-82-6	99
2		p,p'-DDE	316	C14H8Cl4	000072-55-9	99
3		Anthracene, 9,10-dichloro-	246	C14H8Cl2	000605-48-1	97
4		Anthracene, 1,8-dichloro-	246	C14H8Cl2	014381-66-9	93
5		9H-Fluorene, 9-(dichloromethylene)-	246	C14H8Cl2	000835-17-6	93



Data Path : Z:\SVOASRV\HPCHEM1\BNA G\DATA\BG063020\
 Data File : BG045887.D
 Acq On : 30 Jun 2020 16:45
 Operator : CG/JU
 Sample : L3153-04
 Misc :
 ALS Vial : 7 Sample Multiplier: 1

Instrument :
 BNA_G
 ClientSampleID :
 SP1-B

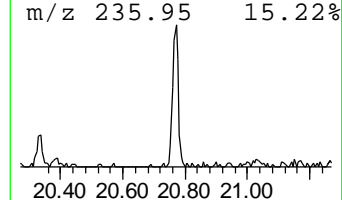
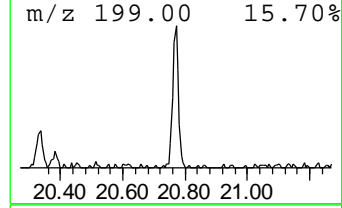
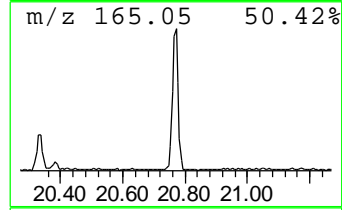
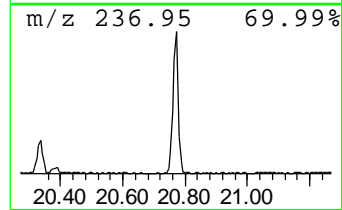
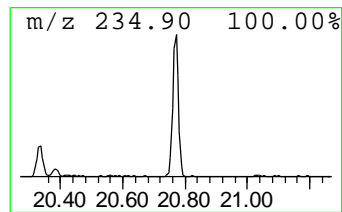
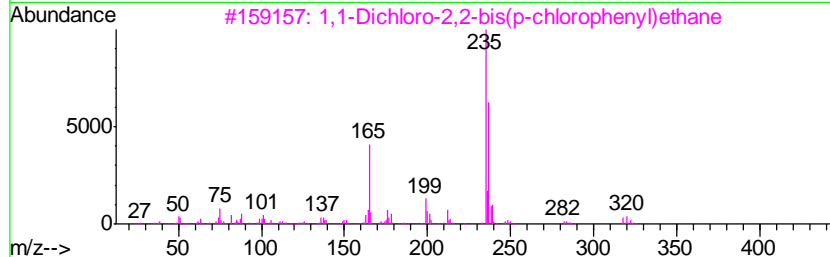
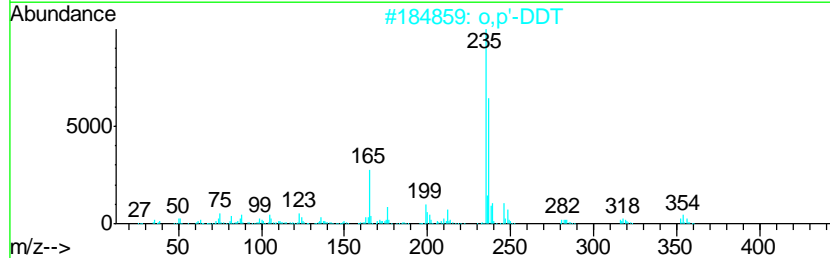
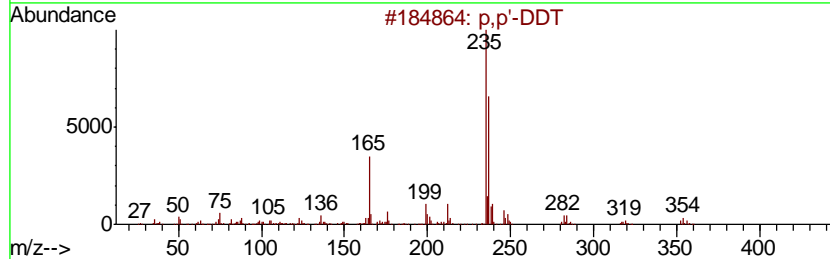
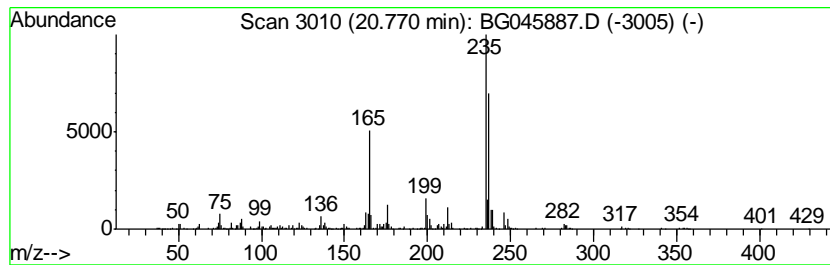
Quant Method : Z:\SVOASRV\HPCHEM1\BNA G\METHODS\8270-BG061520.M
 Quant Title : ASP BNA STANDARDS FOR 5 POINT CALIBRATION

TIC Library : C:\Database\NIST11.L
 TIC Integration Parameters: LSCINT.P

 Peak Number 3 p,p'-DDT Concentration Rank 7

R.T.	EstConc	Area	Relative to ISTD	R.T.
20.77	8.48 ng	361498	Chrysene-d12	21.56

Hit#	of	Tentative ID	MW	MolForm	CAS#	Qual
1	5	p,p'-DDT	352	C14H9Cl5	000050-29-3	97
2		o,p'-DDT	352	C14H9Cl5	000789-02-6	95
3		1,1-Dichloro-2,2-bis(p-chlorophe...	318	C14H10Cl4	000072-54-8	91
4		m,p'-DDD	318	C14H10Cl4	004329-12-8	87
5		2,2-Bis(p-chlorophenyl)ethanol	266	C14H12Cl2O	002642-82-2	86



Data Path : Z:\SVOASRV\HPCHEM1\BNA G\DATA\BG063020\
 Data File : BG045887.D
 Acq On : 30 Jun 2020 16:45
 Operator : CG/JU
 Sample : L3153-04
 Misc :
 ALS Vial : 7 Sample Multiplier: 1

Instrument :
 BNA_G
 ClientSampled :
 SP1-B

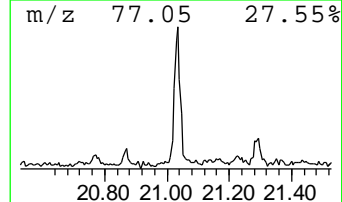
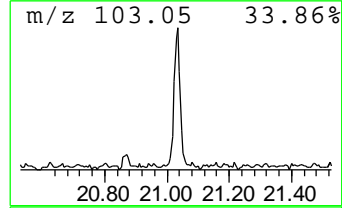
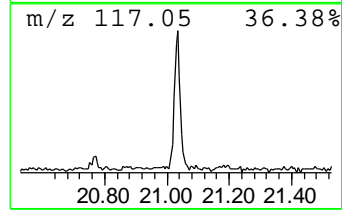
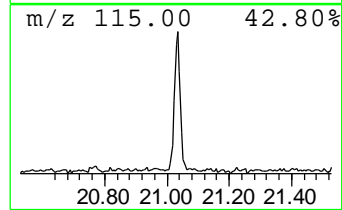
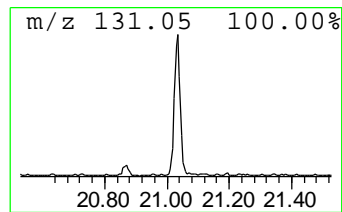
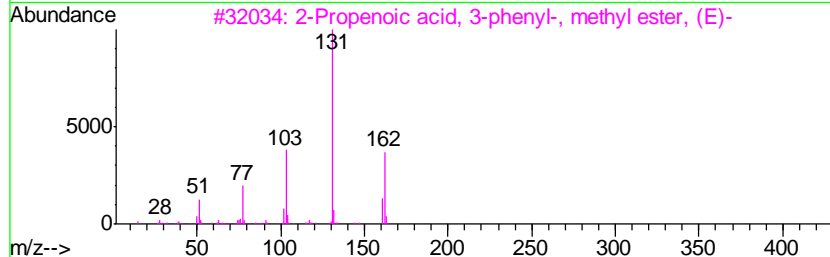
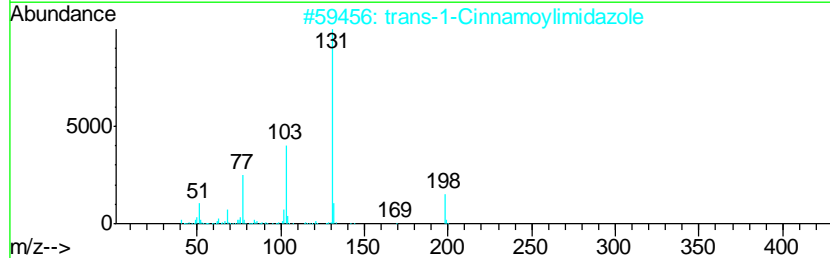
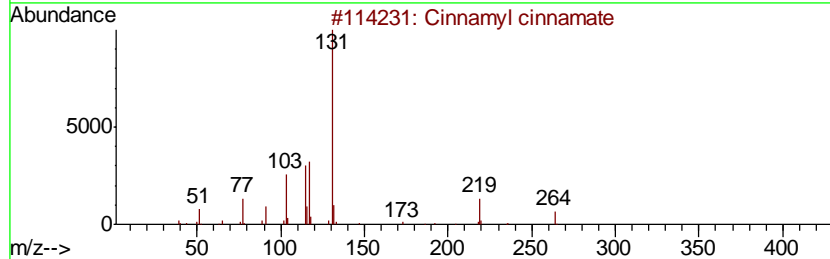
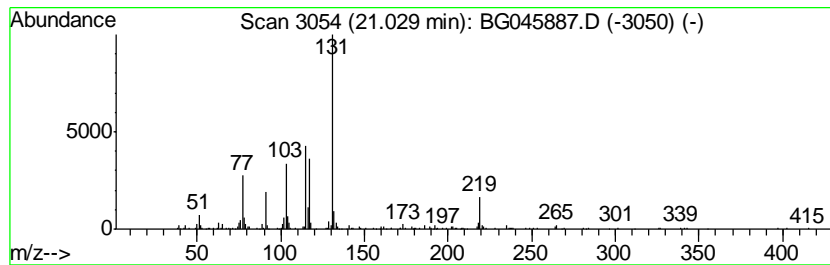
Quant Method : Z:\SVOASRV\HPCHEM1\BNA G\METHODS\8270-BG061520.M
 Quant Title : ASP BNA STANDARDS FOR 5 POINT CALIBRATION

TIC Library : C:\Database\NIST11.L
 TIC Integration Parameters: LSCINT.P

 Peak Number 4 Cinnamyl cinnamate Concentration Rank 10

R.T.	EstConc	Area	Relative to ISTD	R.T.
21.03	4.64 ng	197810	Chrysene-d12	21.56

Hit#	of	Tentative ID	MW	MolForm	CAS#	Qual
1	5	Cinnamyl cinnamate	264	C18H16O2	000122-69-0	64
2		trans-1-Cinnamoylimidazole	198	C12H10N2O	001138-15-4	43
3		2-Propenoic acid, 3-phenyl-, met...	162	C10H10O2	001754-62-7	43
4		2-Iodo-benzoic acid N'-(3-phenyl...	392	C16H13IN2O2	315672-62-9	43
5		p-Vinylbenzohydrazide	162	C9H10N2O	1000244-74-9	43



Data Path : Z:\SVOASRV\HPCHEM1\BNA G\DATA\BG063020\
 Data File : BG045887.D
 Acq On : 30 Jun 2020 16:45
 Operator : CG/JU
 Sample : L3153-04
 Misc :
 ALS Vial : 7 Sample Multiplier: 1

Instrument :
 BNA_G
 ClientSampleID :
 SP1-B

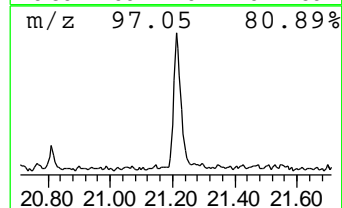
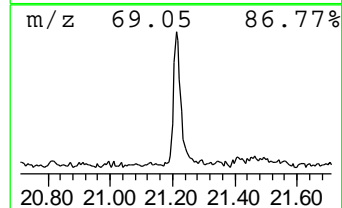
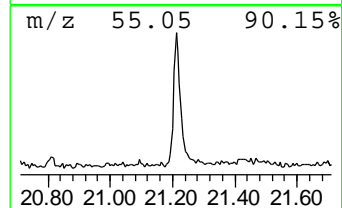
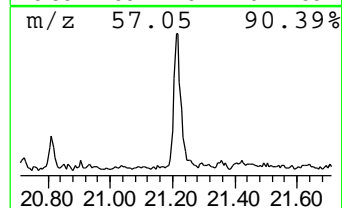
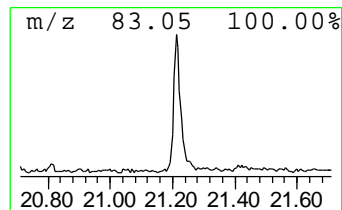
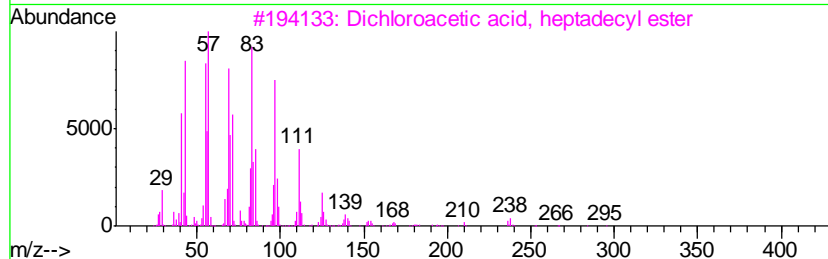
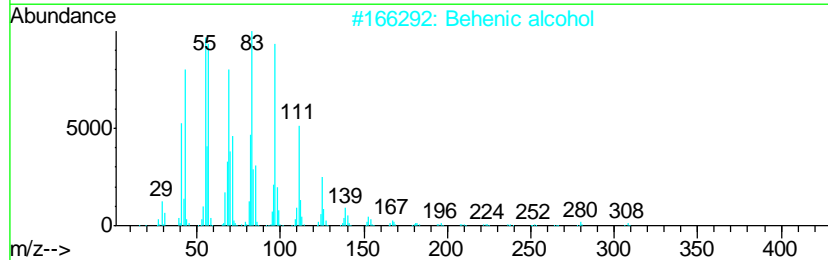
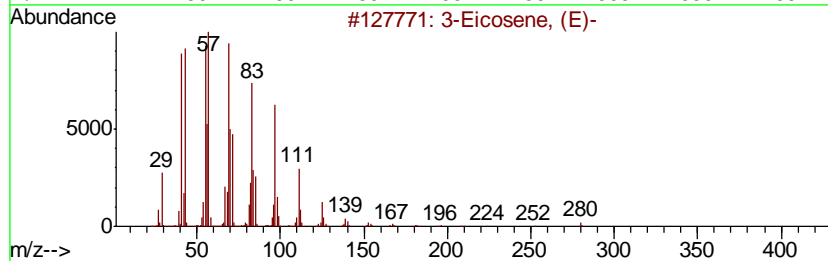
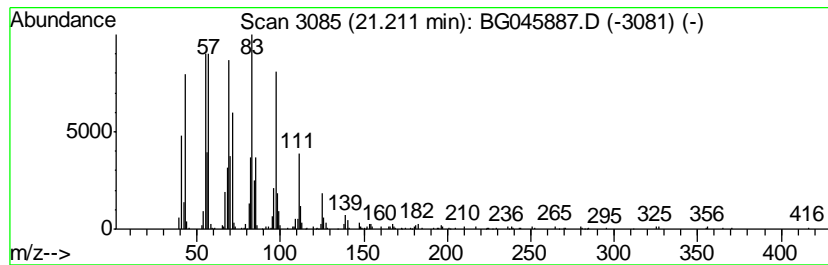
Quant Method : Z:\SVOASRV\HPCHEM1\BNA G\METHODS\8270-BG061520.M
 Quant Title : ASP BNA STANDARDS FOR 5 POINT CALIBRATION

TIC Library : C:\Database\NIST11.L
 TIC Integration Parameters: LSCINT.P

 Peak Number 5 3-Eicosene, (E)- Concentration Rank 5

R.T.	EstConc	Area	Relative to ISTD	R.T.
21.21	9.20 ng	392212	Chrysene-d12	21.56

Hit#	of	Tentative ID	MW	MolForm	CAS#	Qual
1	5	3-Eicosene, (E)-	280	C20H40	074685-33-9	95
2		Behenic alcohol	326	C22H46O	000661-19-8	95
3		Dichloroacetic acid, heptadecyl ...	366	C19H36Cl2O2	1000282-98-2	94
4		n-Nonadecanol-1	284	C19H40O	001454-84-8	94
5		1-Heptacosanol	396	C27H56O	002004-39-9	94



Data Path : Z:\SVOASRV\HPCHEM1\BNA G\DATA\BG063020\
 Data File : BG045887.D
 Acq On : 30 Jun 2020 16:45
 Operator : CG/JU
 Sample : L3153-04
 Misc :
 ALS Vial : 7 Sample Multiplier: 1

Instrument :
 BNA_G
 ClientSampleID :
 SP1-B

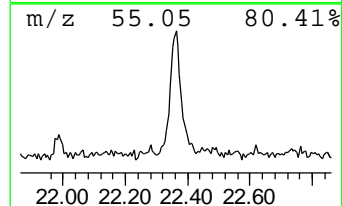
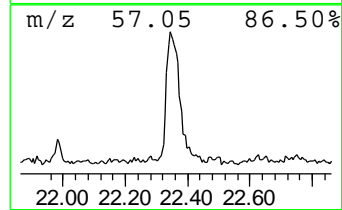
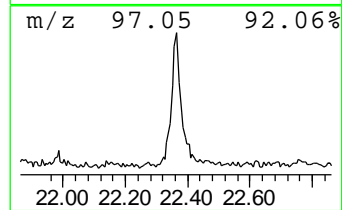
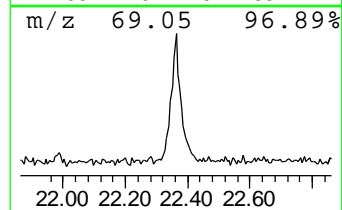
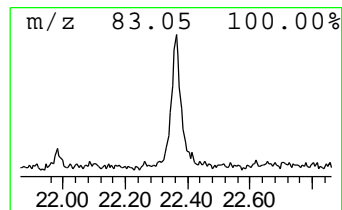
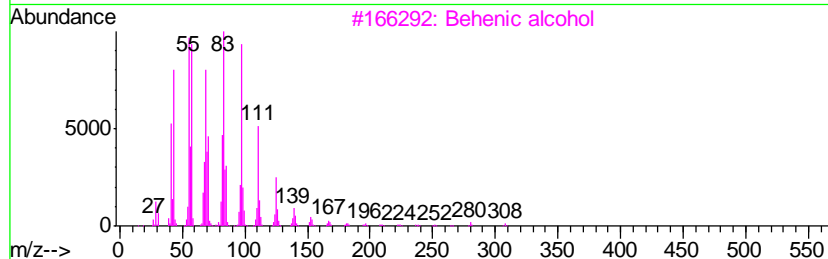
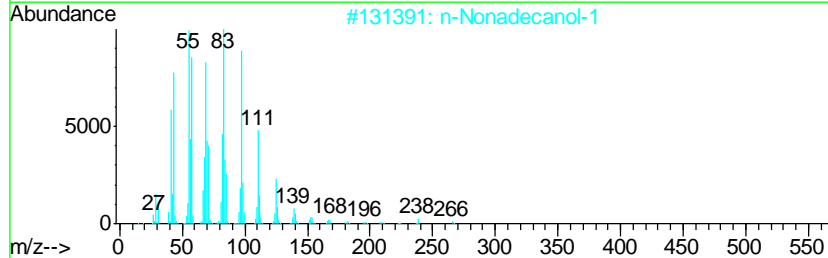
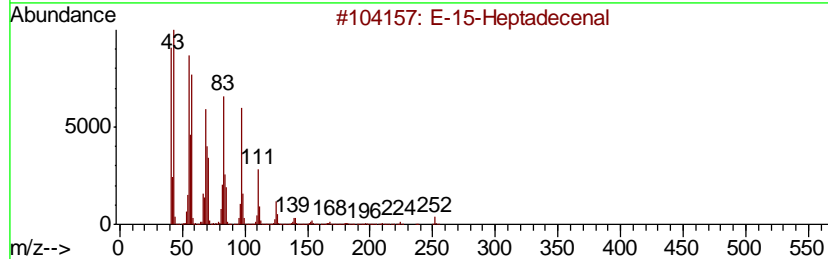
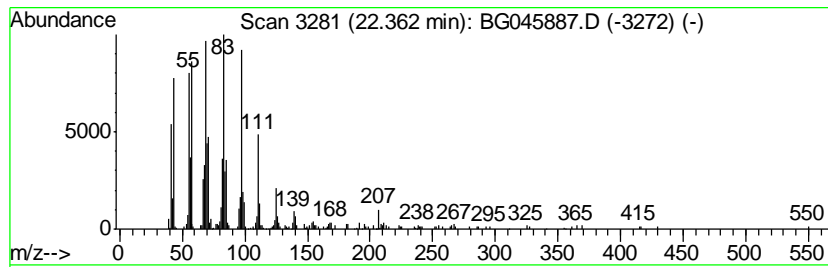
Quant Method : Z:\SVOASRV\HPCHEM1\BNA G\METHODS\8270-BG061520.M
 Quant Title : ASP BNA STANDARDS FOR 5 POINT CALIBRATION

TIC Library : C:\Database\NIST11.L
 TIC Integration Parameters: LSCINT.P

 Peak Number 6 E-15-Heptadecenal Concentration Rank 4

R.T.	EstConc	Area	Relative to ISTD	R.T.
22.36	9.75 ng	415547	Chrysene-d12	21.56

Hit#	of	Tentative ID	MW	MolForm	CAS#	Qual
1	5	E-15-Heptadecenal	252	C17H32O	1000130-97-9	99
2		n-Nonadecanol-1	284	C19H40O	001454-84-8	95
3		Behenic alcohol	326	C22H46O	000661-19-8	93
4		n-Tetracosanol-1	354	C24H50O	000506-51-4	93
5		3-Eicosene, (E)-	280	C20H40	074685-33-9	91



Data Path : Z:\SVOASRV\HPCHEM1\BNA G\DATA\BG063020\
 Data File : BG045887.D
 Acq On : 30 Jun 2020 16:45
 Operator : CG/JU
 Sample : L3153-04
 Misc :
 ALS Vial : 7 Sample Multiplier: 1

Instrument :
 BNA_G
 ClientSampleID :
 SP1-B

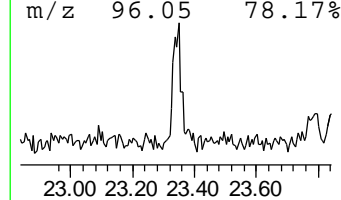
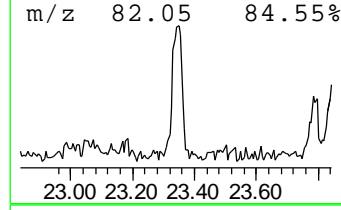
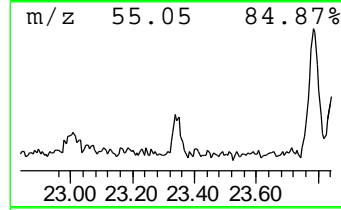
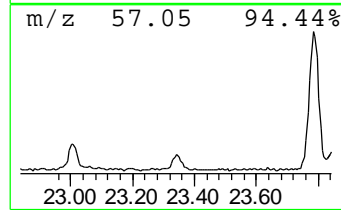
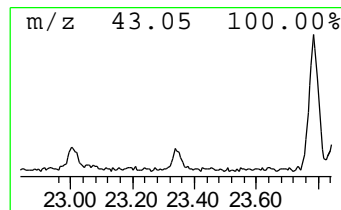
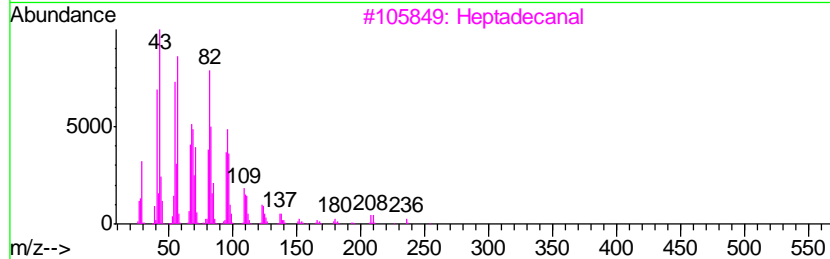
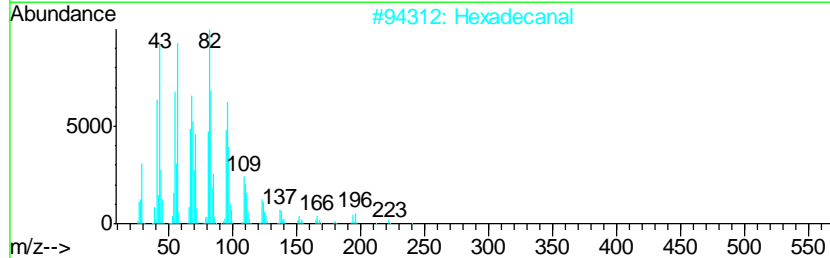
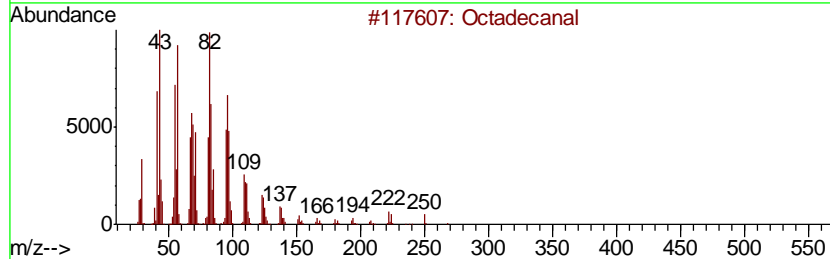
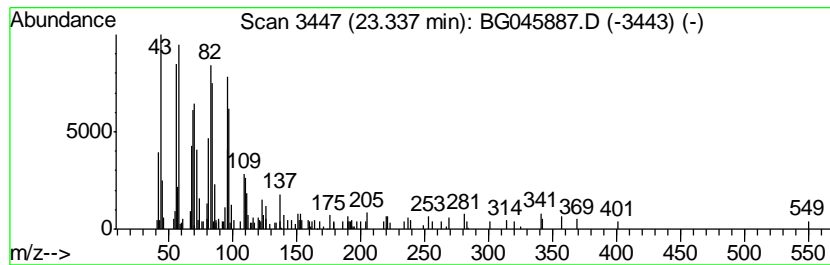
Quant Method : Z:\SVOASRV\HPCHEM1\BNA G\METHODS\8270-BG061520.M
 Quant Title : ASP BNA STANDARDS FOR 5 POINT CALIBRATION

TIC Library : C:\Database\NIST11.L
 TIC Integration Parameters: LSCINT.P

 Peak Number 7 Hexadecanal Concentration Rank 13

R.T.	EstConc	Area	Relative to ISTD	R.T.
23.34	2.33 ng	113602	Perylene-d12	24.67

Hit#	of	Tentative ID	MW	MolForm	CAS#	Qual
1	5	Octadecanal	268	C18H36O	000638-66-4	91
2		Hexadecanal	240	C16H32O	000629-80-1	87
3		Heptadecanal	254	C17H34O	1000376-70-0	87
4		Pentadecanal-	226	C15H30O	002765-11-9	72
5		Fumaric acid, decyl 2-methylally...	310	C18H30O4	1000330-55-0	35



Data Path : Z:\SVOASRV\HPCHEM1\BNA G\DATA\BG063020\
 Data File : BG045887.D
 Acq On : 30 Jun 2020 16:45
 Operator : CG/JU
 Sample : L3153-04
 Misc :
 ALS Vial : 7 Sample Multiplier: 1

Instrument :
 BNA_G
 ClientSampleID :
 SP1-B

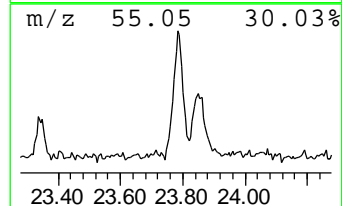
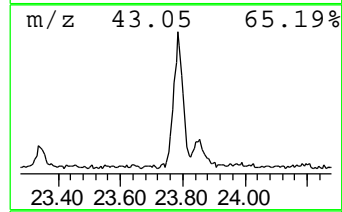
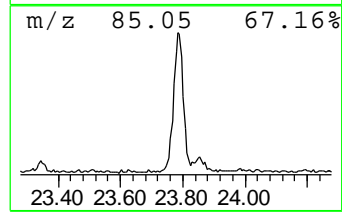
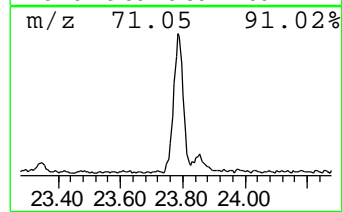
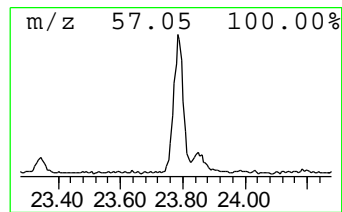
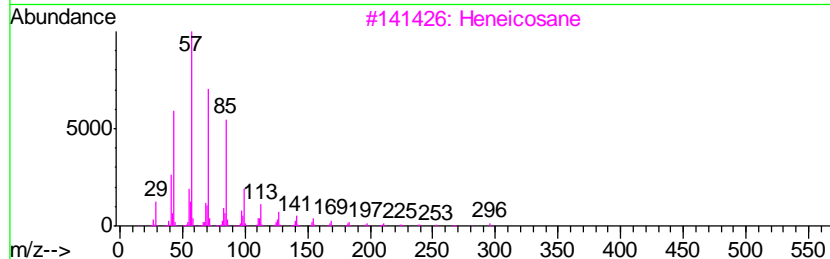
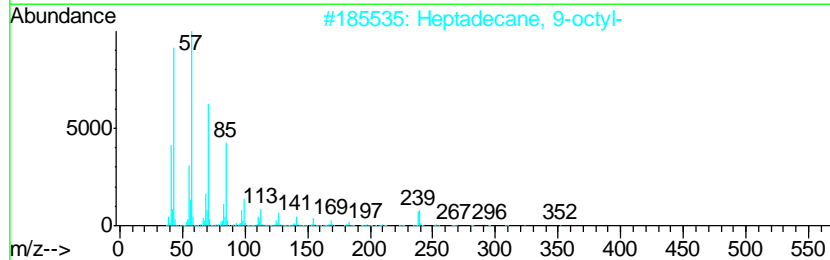
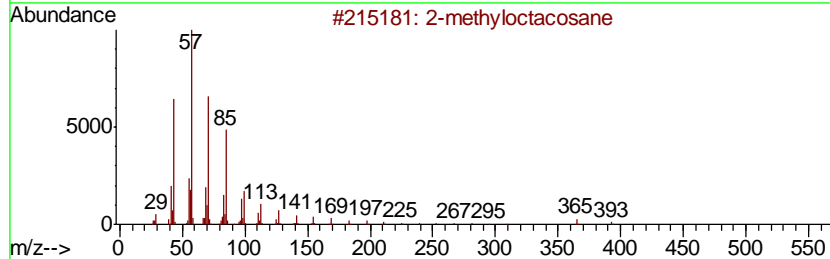
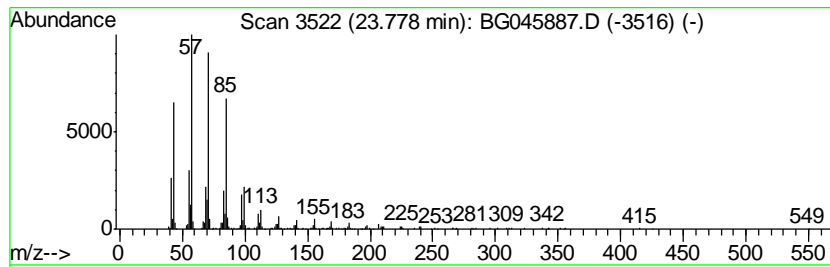
Quant Method : Z:\SVOASRV\HPCHEM1\BNA G\METHODS\8270-BG061520.M
 Quant Title : ASP BNA STANDARDS FOR 5 POINT CALIBRATION

TIC Library : C:\Database\NIST11.L
 TIC Integration Parameters: LSCINT.P

 Peak Number 8 2-methyloctacosane Concentration Rank 3

R.T.	EstConc	Area	Relative to ISTD	R.T.
23.78	11.82 ng	577256	Perylene-d12	24.67

Hit#	of	Tentative ID	MW	MolForm	CAS#	Qual
1	5	2-methyloctacosane	408	C29H60	1000376-72-8	91
2		Heptadecane, 9-octyl-	352	C25H52	007225-64-1	91
3		Heneicosane	296	C21H44	000629-94-7	91
4		Heneicosane, 11-(1-ethylpropyl)-	366	C26H54	055282-11-6	91
5		Heptadecane	240	C17H36	000629-78-7	87



Data Path : Z:\SVOASRV\HPCHEM1\BNA G\DATA\BG063020\
 Data File : BG045887.D
 Acq On : 30 Jun 2020 16:45
 Operator : CG/JU
 Sample : L3153-04
 Misc :
 ALS Vial : 7 Sample Multiplier: 1

Instrument :
 BNA_G
 ClientSampleID :
 SP1-B

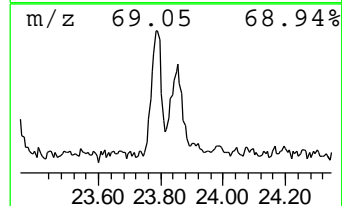
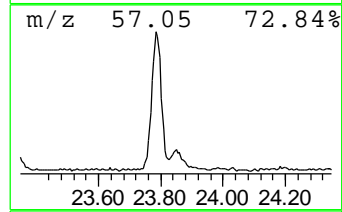
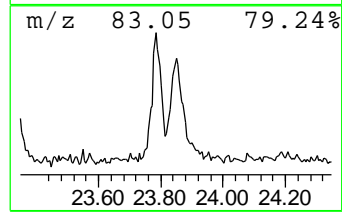
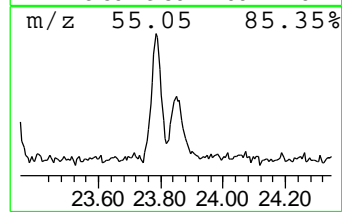
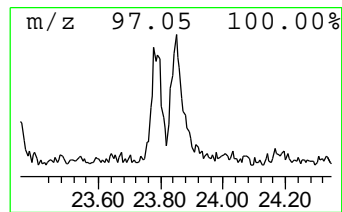
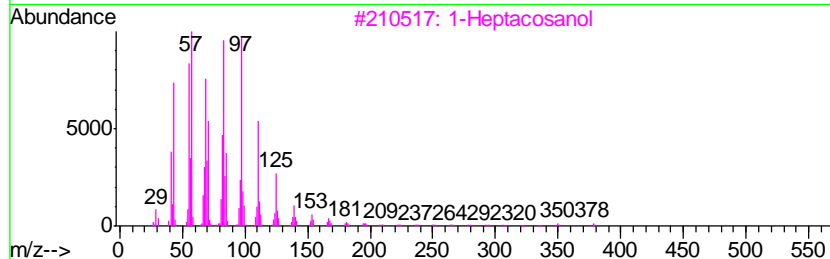
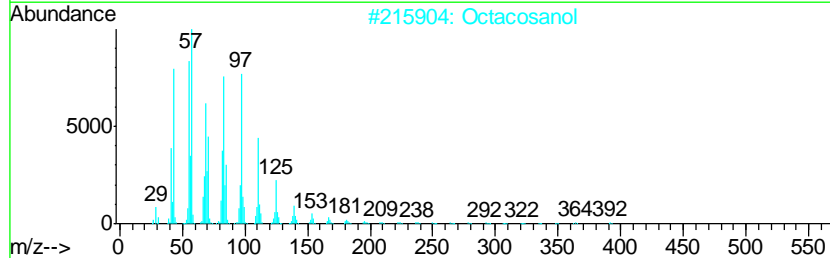
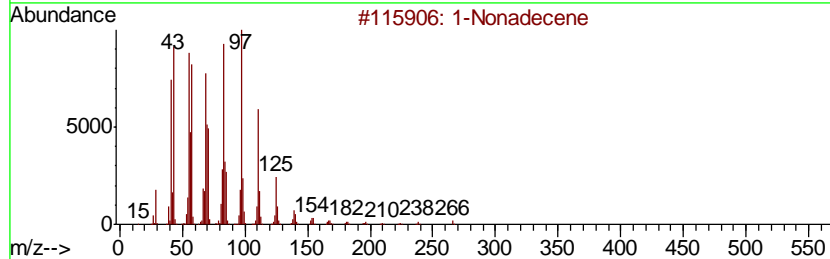
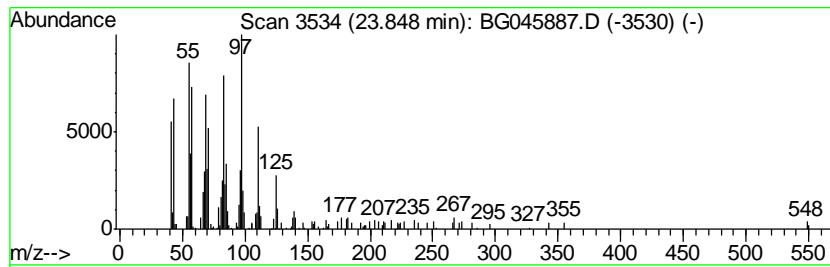
Quant Method : Z:\SVOASRV\HPCHEM1\BNA G\METHODS\8270-BG061520.M
 Quant Title : ASP BNA STANDARDS FOR 5 POINT CALIBRATION

TIC Library : C:\Database\NIST11.L
 TIC Integration Parameters: LSCINT.P

 Peak Number 9 1-Nonadecene Concentration Rank 11

R.T.	EstConc	Area	Relative to ISTD	R.T.
23.85	3.73 ng	182115	Perylene-d12	24.67

Hit#	of	Tentative ID	MW	MolForm	CAS#	Qual
1	5	1-Nonadecene	266	C19H38	018435-45-5	96
2		Octacosanol	410	C28H58O	000557-61-9	94
3		1-Heptacosanol	396	C27H56O	002004-39-9	94
4		Nonadecyl trifluoroacetate	380	C21H39F3O2	1000351-76-3	93
5		1-Docosene	308	C22H44	001599-67-3	91



Data Path : Z:\SVOASRV\HPCHEM1\BNA G\DATA\BG063020\
 Data File : BG045887.D
 Acq On : 30 Jun 2020 16:45
 Operator : CG/JU
 Sample : L3153-04
 Misc :
 ALS Vial : 7 Sample Multiplier: 1

Instrument :
 BNA_G
 ClientSampleId :
 SP1-B

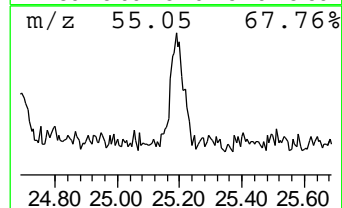
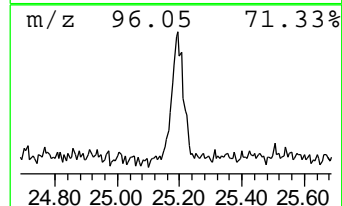
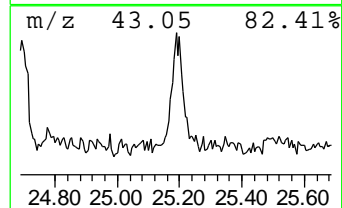
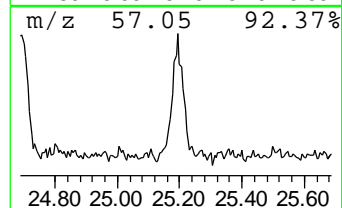
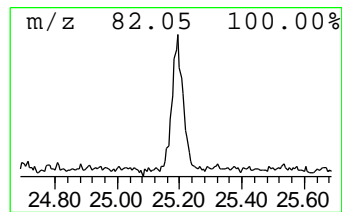
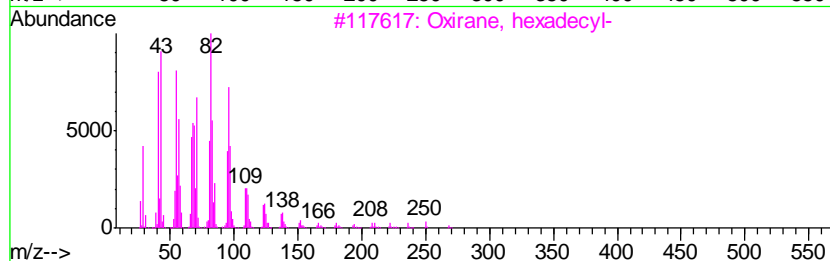
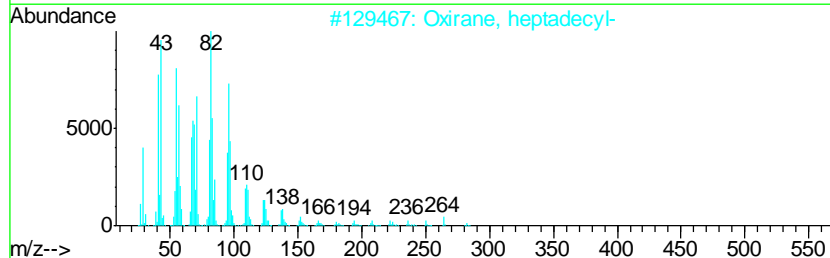
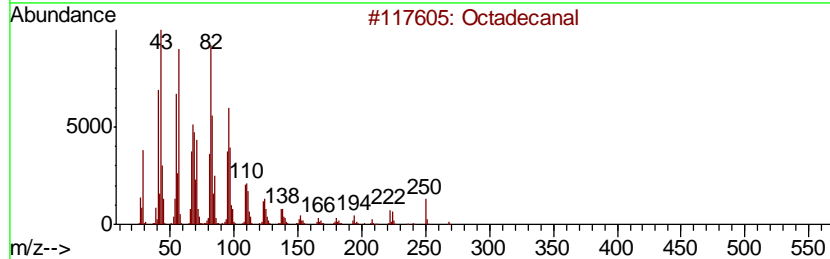
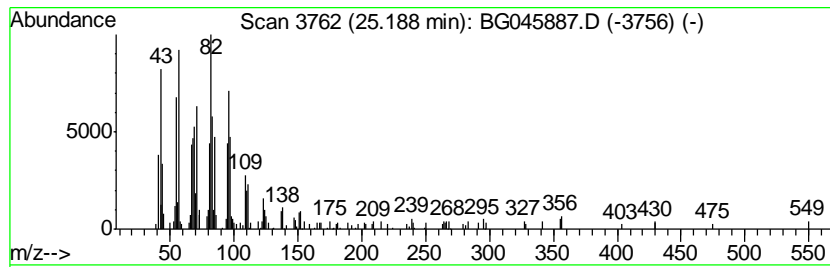
Quant Method : Z:\SVOASRV\HPCHEM1\BNA G\METHODS\8270-BG061520.M
 Quant Title : ASP BNA STANDARDS FOR 5 POINT CALIBRATION

TIC Library : C:\Database\NIST11.L
 TIC Integration Parameters: LSCINT.P

 Peak Number 10 Octadecanal Concentration Rank 9

R.T.	EstConc	Area	Relative to ISTD	R.T.
25.19	4.81 ng	234818	Perylene-d12	24.67

Hit#	of	Tentative ID	MW	MolForm	CAS#	Qual
1	5	Octadecanal	268	C18H36O	000638-66-4	95
2		Oxirane, heptadecyl-	282	C19H38O	067860-04-2	90
3		Oxirane, hexadecyl-	268	C18H36O	007390-81-0	90
4		Hexadecanal	240	C16H32O	000629-80-1	90
5		18-Nonadecen-1-ol	282	C19H38O	1000142-89-2	83



Data Path : Z:\SVOASRV\HPCHEM1\BNA G\DATA\BG063020\
 Data File : BG045887.D
 Acq On : 30 Jun 2020 16:45
 Operator : CG/JU
 Sample : L3153-04
 Misc :
 ALS Vial : 7 Sample Multiplier: 1

Instrument :
 BNA_G
 ClientSampleID :
 SP1-B

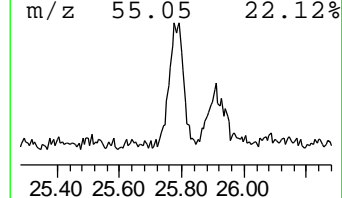
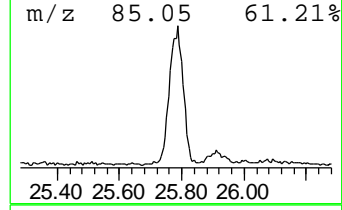
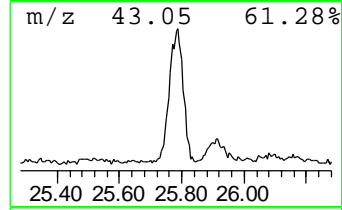
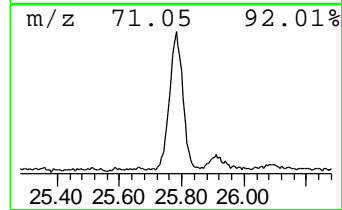
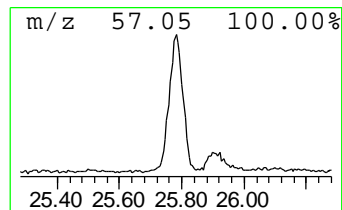
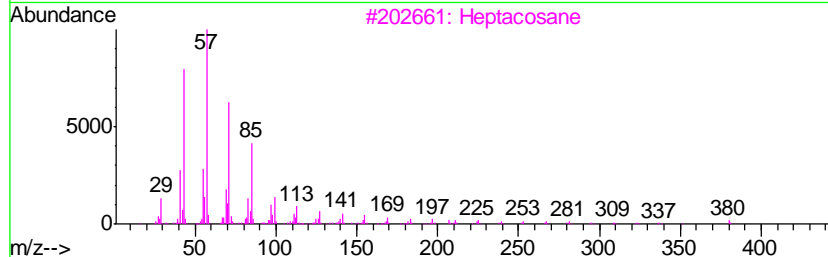
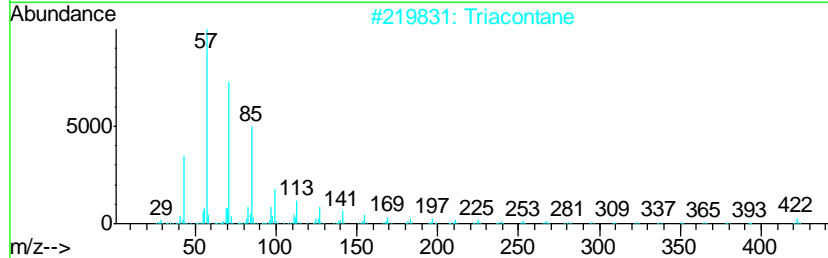
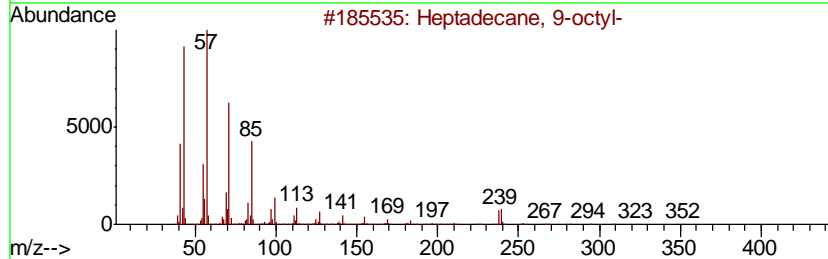
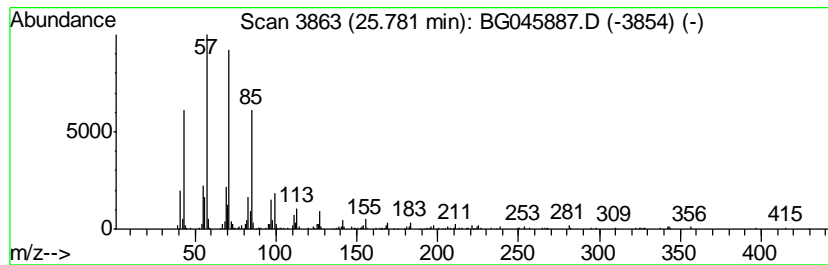
Quant Method : Z:\SVOASRV\HPCHEM1\BNA G\METHODS\8270-BG061520.M
 Quant Title : ASP BNA STANDARDS FOR 5 POINT CALIBRATION

TIC Library : C:\Database\NIST11.L
 TIC Integration Parameters: LSCINT.P

 Peak Number 11 Heptadecane, 9-octyl- Concentration Rank 2

R.T.	EstConc	Area	Relative to ISTD	R.T.
25.78	12.65 ng	617776	Perylene-d12	24.67

Hit#	of	Tentative ID	MW	MolForm	CAS#	Qual
1	5	Heptadecane, 9-octyl-	352	C25H52	007225-64-1	91
2		Triacontane	422	C30H62	000638-68-6	91
3		Heptacosane	380	C27H56	000593-49-7	91
4		Docosane	310	C22H46	000629-97-0	91
5		Octadecane, 2-methyl-	268	C19H40	001560-88-9	87



Data Path : Z:\SVOASRV\HPCHEM1\BNA G\DATA\BG063020\
 Data File : BG045887.D
 Acq On : 30 Jun 2020 16:45
 Operator : CG/JU
 Sample : L3153-04
 Misc :
 ALS Vial : 7 Sample Multiplier: 1

Instrument :
 BNA_G
 ClientSampled :
 SP1-B

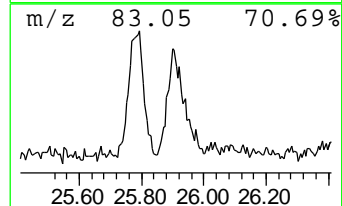
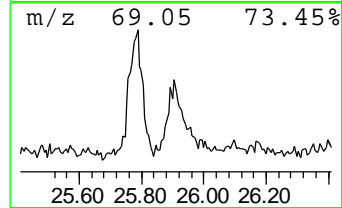
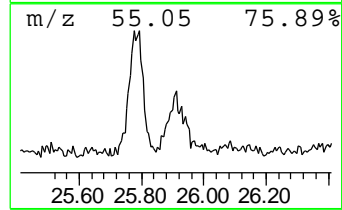
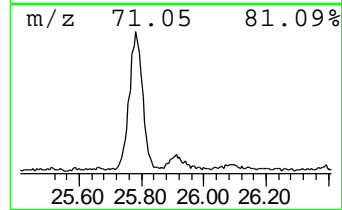
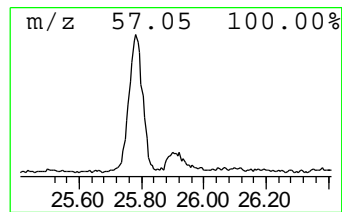
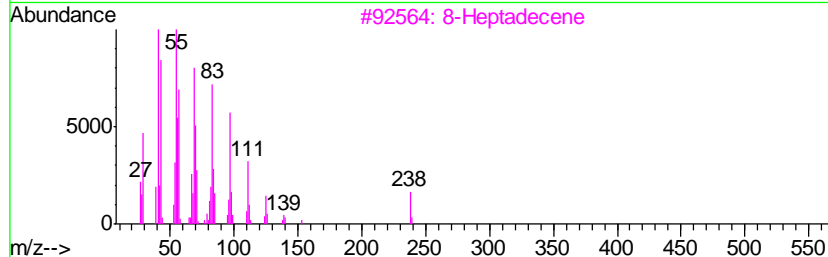
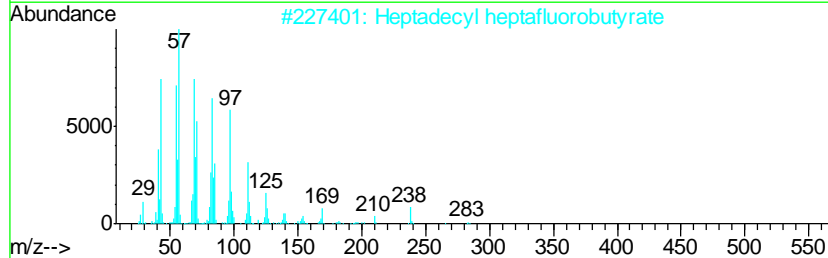
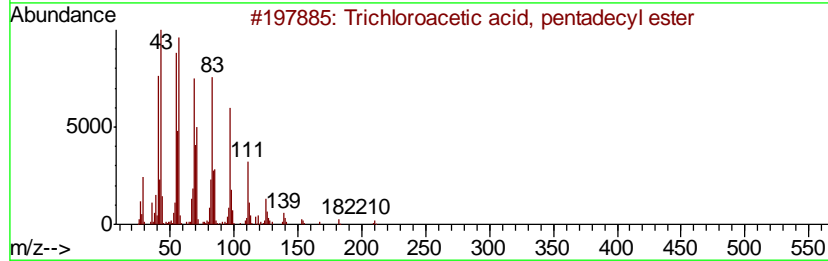
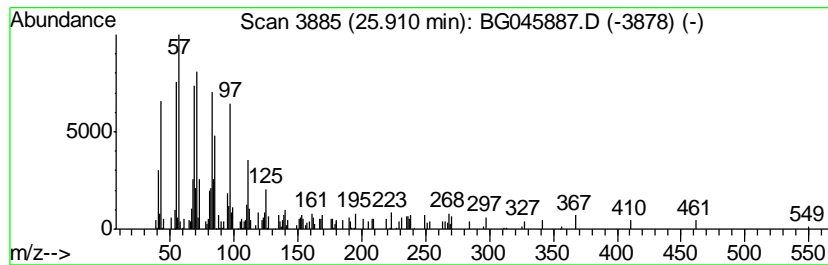
Quant Method : Z:\SVOASRV\HPCHEM1\BNA G\METHODS\8270-BG061520.M
 Quant Title : ASP BNA STANDARDS FOR 5 POINT CALIBRATION

TIC Library : C:\Database\NIST11.L
 TIC Integration Parameters: LSCINT.P

 Peak Number 12 Trichloroacetic acid, penta... Concentration Rank 12

R.T.	EstConc	Area	Relative to ISTD	R.T.
25.91	3.63 ng	177205	Perylene-d12	24.67

Hit#	of	Tentative ID	MW	MolForm	CAS#	Qual
1	5	Trichloroacetic acid, pentadecyl...	372	C17H31Cl3O2	074339-53-0	62
2		Heptadecyl heptafluorobutyrate	452	C21H35F7O2	959085-66-6	62
3		8-Heptadecene	238	C17H34	002579-04-6	58
4		Octatriacontyl pentafluoropropio...	697	C41H77F5O2	1000351-89-1	52
5		Octatriacontyl trifluoroacetate	647	C40H77F3O2	1000351-88-7	49



Data Path : Z:\SVOASRV\HPCHEM1\BNA G\DATA\BG063020\
 Data File : BG045887.D
 Acq On : 30 Jun 2020 16:45
 Operator : CG/JU
 Sample : L3153-04
 Misc :
 ALS Vial : 7 Sample Multiplier: 1

Instrument :
 BNA_G
 ClientSampled :
 SP1-B

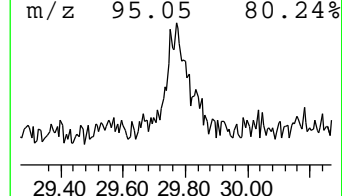
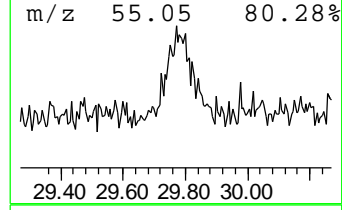
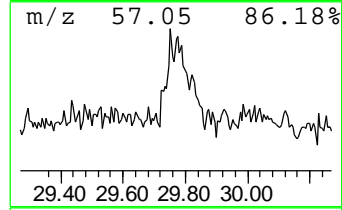
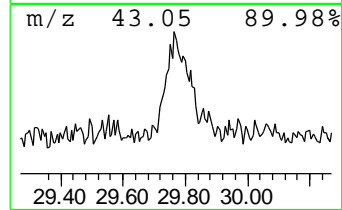
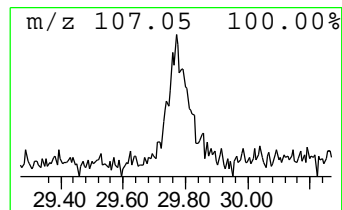
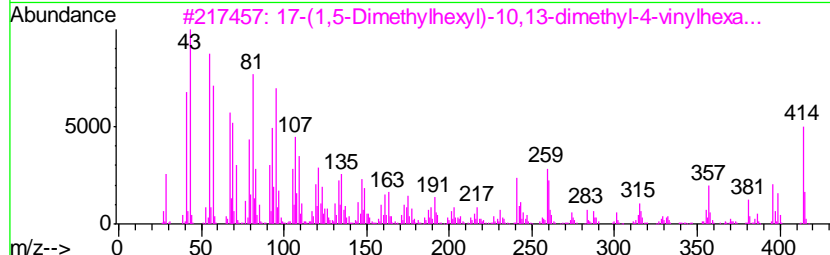
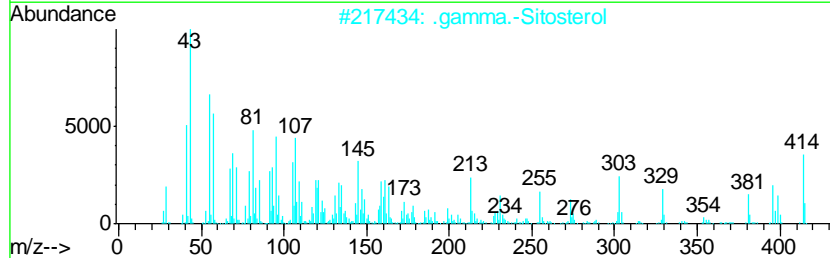
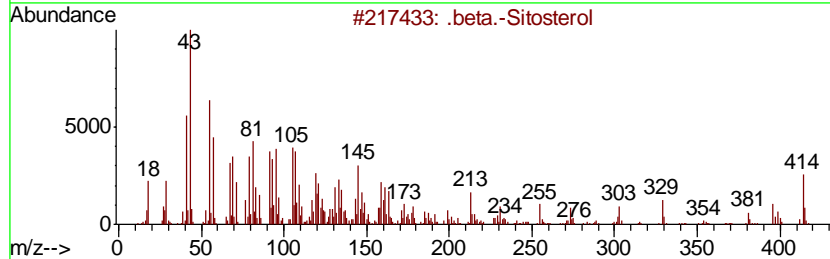
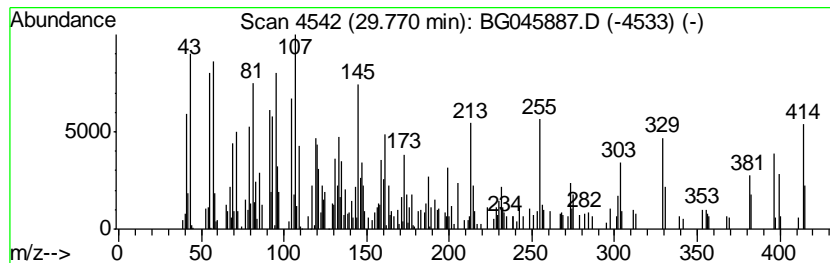
Quant Method : Z:\SVOASRV\HPCHEM1\BNA G\METHODS\8270-BG061520.M
 Quant Title : ASP BNA STANDARDS FOR 5 POINT CALIBRATION

TIC Library : C:\Database\NIST11.L
 TIC Integration Parameters: LSCINT.P

 Peak Number 13 .beta.-Sitosterol Concentration Rank 8

R.T.	EstConc	Area	Relative to ISTD	R.T.
29.77	7.83 ng	382426	Perylene-d12	24.67

Hit#	of	Tentative ID	MW	MolForm	CAS#	Qual
1	5	.beta.-Sitosterol	414	C29H50O	000083-46-5	90
2		.gamma.-Sitosterol	414	C29H50O	000083-47-6	90
3		17-(1,5-Dimethylhexyl)-10,13-dim...	414	C29H50O	1000210-86-9	64
4		.beta.-Sitosterol acetate	456	C31H52O2	000915-05-9	43
5		Campesterol	400	C28H48O	000474-62-4	25



Data Path : Z:\SVOASRV\HPCHEM1\BNA_G\DATA\BG063020\
 Data File : BG045887.D
 Acq On : 30 Jun 2020 16:45
 Operator : CG/JU
 Sample : L3153-04
 Misc :
 ALS Vial : 7 Sample Multiplier: 1

Instrument :
 BNA_G
 ClientSampleId :
 SP1-B

Quant Method : Z:\SVOASRV\HPCHEM1\BNA_G\METHODS\8270-BG061520.M
 Quant Title : ASP BNA STANDARDS FOR 5 POINT CALIBRATION

TIC Library : C:\Database\NIST11.L
 TIC Integration Parameters: LSCINT.P

TIC Top Hit name	RT	EstConc	Units	Response	--Internal Standard--			
					#	RT	Resp	Conc
o,p'-DDE	19.82	9.1	ng	387412	5	21.56	852526	20.0
p,p'-DDT	20.77	8.5	ng	361498	5	21.56	852526	20.0
Cinnamyl cinnamate	21.03	4.6	ng	197810	5	21.56	852526	20.0
3-Eicosene, (E)-	21.21	9.2	ng	392212	5	21.56	852526	20.0
E-15-Heptadecenal	22.36	9.8	ng	415547	5	21.56	852526	20.0
Hexadecanal	23.34	2.3	ng	113602	6	24.67	976375	20.0
2-methyloctacosane	23.78	11.8	ng	577256	6	24.67	976375	20.0
1-Nonadecene	23.85	3.7	ng	182115	6	24.67	976375	20.0
Octadecanal	25.19	4.8	ng	234818	6	24.67	976375	20.0
Heptadecane, 9-oc...	25.78	12.7	ng	617776	6	24.67	976375	20.0
Trichloroacetic a...	25.91	3.6	ng	177205	6	24.67	976375	20.0
.beta.-Sitosterol	29.77	7.8	ng	382426	6	24.67	976375	20.0