

Data Path : Z:\svoasrv\HPCHEM1\BNA\_G\Data\BG070323\  
 Data File : BG057967.D  
 Acq On : 3 Jul 2023 23:20  
 Operator : CG/JU  
 Sample : 03246-09  
 Misc :  
 ALS Vial : 23 Sample Multiplier: 1

Instrument :  
 BNA\_G  
 ClientSampleId :  
 DCGJ6

Quant Time: Jul 04 00:57:02 2023  
 Quant Method : Z:\svoasrv\HPCHEM1\BNA\_G\Methods\SFAM-EPA-BG070123.MA.M  
 Quant Title : SVOA CALIBRATION  
 QLast Update : Sun Jul 02 07:50:15 2023  
 Response via : Initial Calibration

Compound	R.T.	QIon	Response	Conc	Units	Dev(Min)
Internal Standards						
1) 1,4-Dichlorobenzene-d4	7.936	152	45374	20.000	ng/ul	0.00
20) Naphthalene-d8	10.744	136	212213	20.000	ng/ul	0.01
38) Acenaphthene-d10	14.569	164	142605	20.000	ng/ul	0.00
64) Phenanthrene-d10	17.313	188	296762	20.000	ng/ul	0.00
79) Chrysene-d12	21.567	240	237687	20.000	ng/ul	0.00
88) Perylene-d12	24.734	264	298640	20.000	ng/ul	0.02
System Monitoring Compounds						
3) 1,4-Dioxane-d8	3.376	96	4329	3.341	ng/uL	0.01
4) Pyridine-d5	3.788	84	54227	13.785	ng/ul	0.01
7) Phenol-d5	7.101	99	96560	20.838	ng/ul	0.01
9) Bis-(2-Chloroethyl)eth...	7.266	67	57203	20.485	ng/ul	0.00
11) 2-Chlorophenol-d4	7.471	132	70287	21.993	ng/ul	0.00
15) 4-Methylphenol-d8	8.646	113	67486	19.301	ng/ul	0.01
21) Nitrobenzene-d5	9.099	128	36087	20.864	ng/ul	0.00
24) 2-Nitrophenol-d4	9.822	143	38910	21.405	ng/ul	0.00
28) 2,4-Dichlorophenol-d3	10.362	165	74109	21.252	ng/ul	0.00
31) 4-Chloroaniline-d4	10.873	131	38161	7.218	ng/ul	0.00
46) Dimethylphthalate-d6	13.976	166	234251	20.819	ng/ul	0.00
49) Acenaphthylene-d8	14.263	160	266465	21.702	ng/ul	0.00
54) 4-Nitrophenol-d4	14.775	143	27156	13.661	ng/ul	0.01
60) Fluorene-d10	15.562	176	201310	21.067	ng/ul	0.00
65) 4,6-Dinitro-2-methylph...	15.679	200	26914	16.702	ng/ul	0.01
73) Anthracene-d10	17.413	188	295987	21.494	ng/ul	0.00
81) Pyrene-d10	19.698	212	344772	23.031	ng/ul	0.00
92) Benzo(a)pyrene-d12	24.516	264	352763	23.185	ng/ul	0.02
Target Compounds						
10) Bis(2-Chloroethyl)ether	7.372	93	6185	1.703	ng/ul#	16
30) Naphthalene	10.791	128	19440	1.630	ng/ul	98
36) 2-Methylnaphthalene	12.401	142	16152	2.009	ng/ul	97
37) 1-Methylnaphthalene	12.618	142	11637	1.443	ng/ul#	91
50) Acenaphthylene	14.299	152	13792	1.040	ng/ul	94
52) Acenaphthene	14.634	153	27170	2.986	ng/ul	94
56) Dibenzofuran	14.969	168	30239	2.338	ng/ul	96
61) Fluorene	15.615	166	29447	2.775	ng/ul#	90
72) Phenanthrene	17.360	178	459912	30.467	ng/ul	99
74) Anthracene	17.448	178	87804	5.748	ng/ul	99
77) Carbazole	17.712	167	47515	3.439	ng/ul	96
80) Fluoranthene	19.369	202	706978	40.757	ng/ul	99
82) Pyrene	19.733	202	563406	32.267	ng/ul	99
83) Butylbenzylphthalate	20.615	149	9142	1.291	ng/ul#	87
85) Benzo(a)anthracene	21.549	228	329020	19.279	ng/ul	96
86) Bis(2-ethylhexyl)phtha...	21.455	149	59766	5.890	ng/ul#	96
87) Chrysene	21.549	228	325039	20.317	ng/ul	98
90) Benzo(b)fluoranthene	23.729	252	497748	26.918	ng/ul	99
91) Benzo(k)fluoranthene	23.729	252	497748	27.463	ng/ul	99
93) Benzo(a)pyrene	24.581	252	318127	19.438	ng/ul	97
94) Indeno(1,2,3-cd)pyrene	28.335	276	244107	11.232	ng/ul	97
95) Dibenzo(a,h)anthracene	28.376	278	33465	1.867	ng/ul#	87
96) Benzo(g,h,i)perylene	29.463	276	204007	11.492	ng/ul	99

Data Path : Z:\svoasrv\HPCHEM1\BNA\_G\Data\BG070323\  
Data File : BG057967.D  
Acq On : 3 Jul 2023 23:20  
Operator : CG/JU  
Sample : 03246-09  
Misc :  
ALS Vial : 23 Sample Multiplier: 1

Instrument :  
BNA\_G  
ClientSampleId :  
DCGJ6

Quant Time: Jul 04 00:57:02 2023  
Quant Method : Z:\svoasrv\HPCHEM1\BNA\_G\Methods\SFAM-EPA-BG070123.MA.M  
Quant Title : SVOA CALIBRATION  
QLast Update : Sun Jul 02 07:50:15 2023  
Response via : Initial Calibration

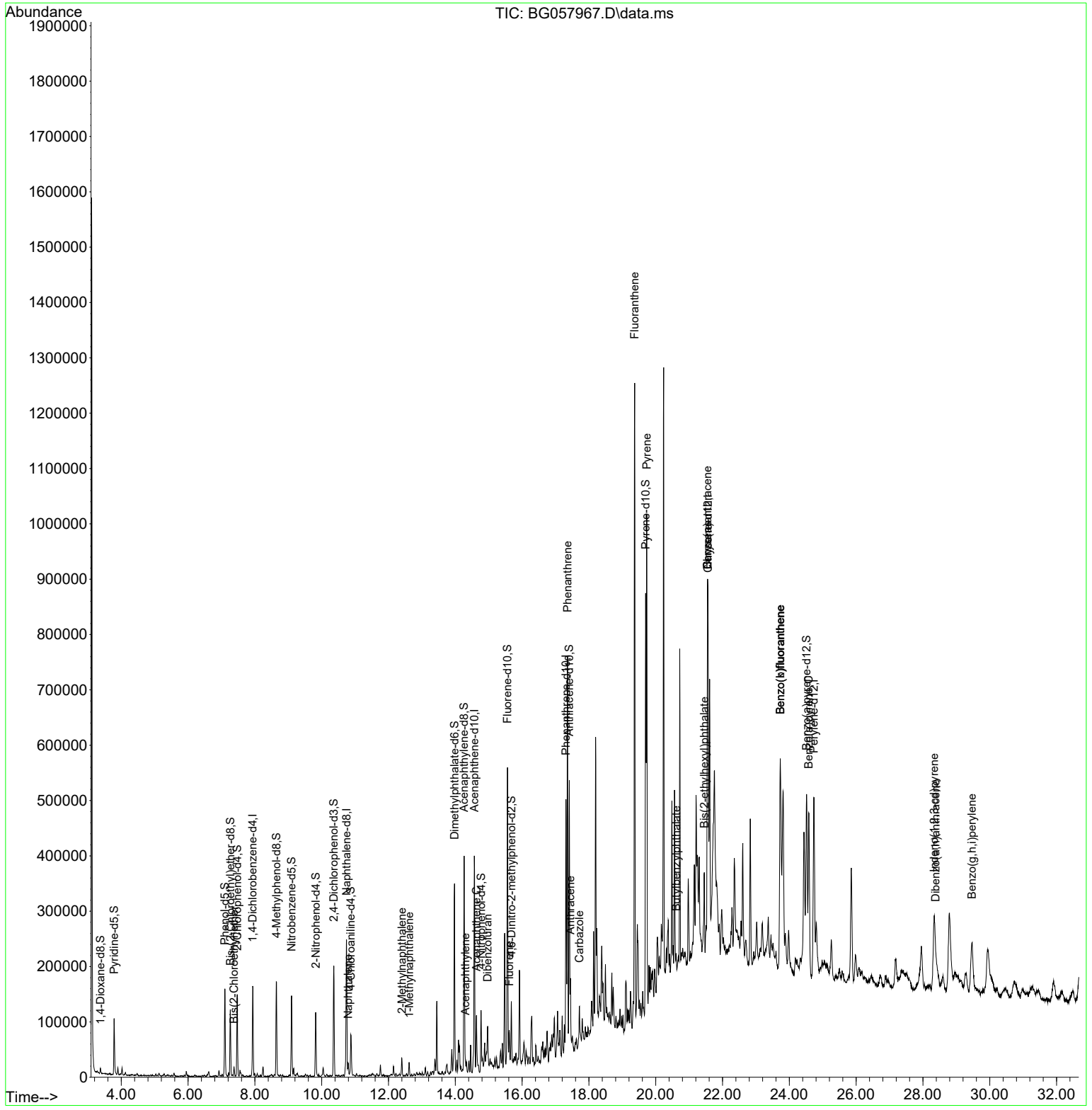
Compound	R.T.	QIon	Response	Conc	Units	Dev(Min)
----------	------	------	----------	------	-------	----------

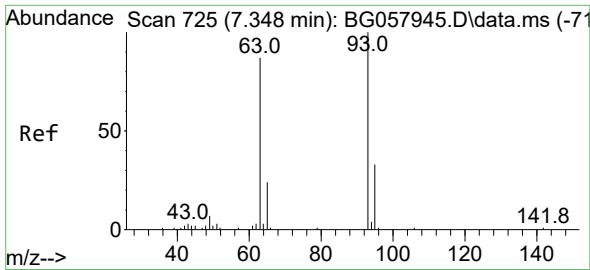
-----  
(#) = qualifier out of range (m) = manual integration (+) = signals summed

Data Path : Z:\svoasrv\HPCHEM1\BNA\_G\Data\BG070323\  
 Data File : BG057967.D  
 Acq On : 3 Jul 2023 23:20  
 Operator : CG/JU  
 Sample : 03246-09  
 Misc :  
 ALS Vial : 23 Sample Multiplier: 1

Instrument :  
 BNA\_G  
 ClientSampleId :  
 DCGJ6

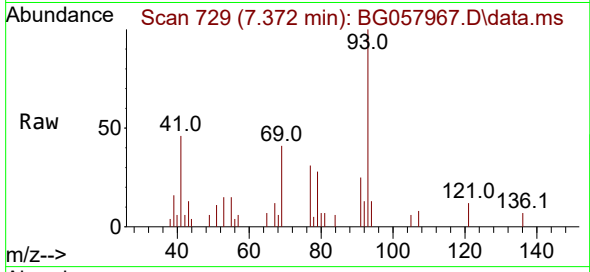
Quant Time: Jul 04 00:57:02 2023  
 Quant Method : Z:\svoasrv\HPCHEM1\BNA\_G\Methods\SFAM-EPA-BG070123.MA.M  
 Quant Title : SVOA CALIBRATION  
 QLast Update : Sun Jul 02 07:50:15 2023  
 Response via : Initial Calibration



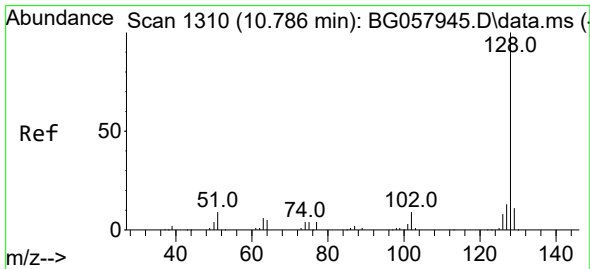
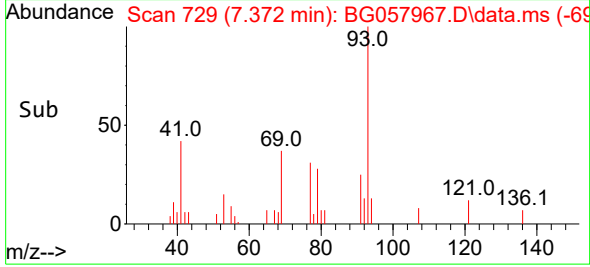
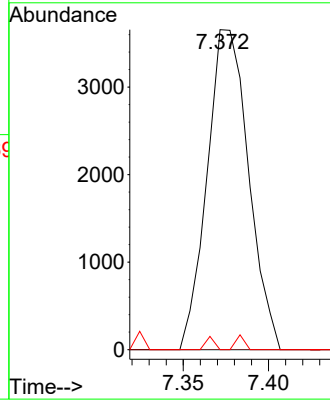


#10  
 Bis(2-Chloroethyl)ether  
 Concen: 1.703 ng/ul  
 RT: 7.372 min Scan# 71  
 Delta R.T. 0.024 min  
 Lab File: BG057967.D  
 Acq: 3 Jul 2023 23:20

Instrument :  
 BNA\_G  
 ClientSampleId :  
 DCGJ6

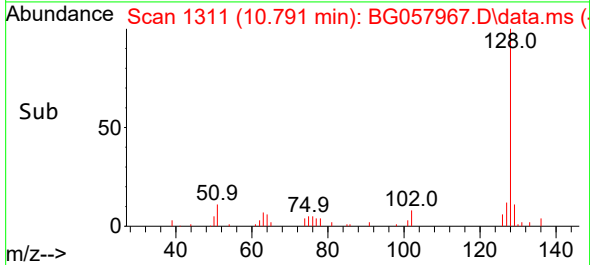
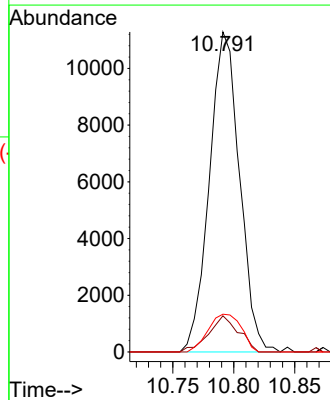
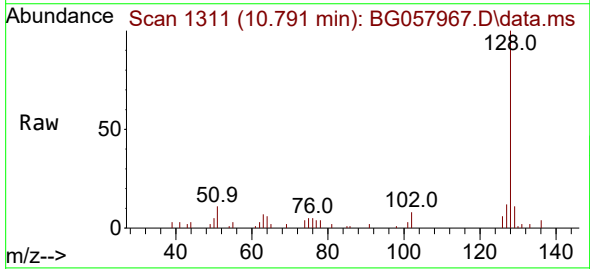


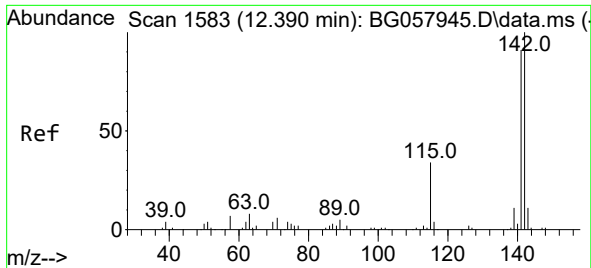
Tgt Ion: 93 Resp: 6185  
 Ion Ratio Lower Upper  
 93 100  
 63 0.0 69.4 104.0#  
 95 0.0 27.0 40.6#



#30  
 Naphthalene  
 Concen: 1.630 ng/ul  
 RT: 10.791 min Scan# 1311  
 Delta R.T. 0.006 min  
 Lab File: BG057967.D  
 Acq: 3 Jul 2023 23:20

Tgt Ion:128 Resp: 19440  
 Ion Ratio Lower Upper  
 128 100  
 129 11.3 8.6 12.8  
 127 11.8 10.2 15.2

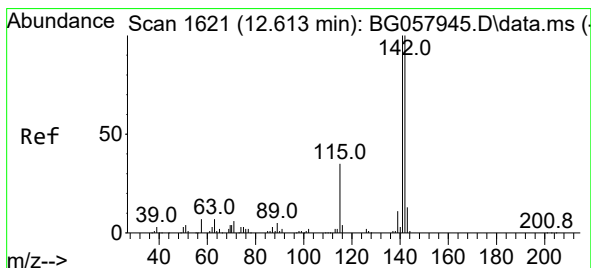
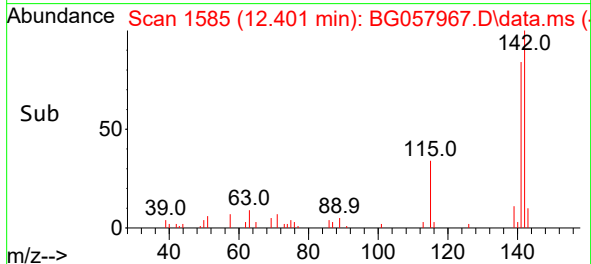
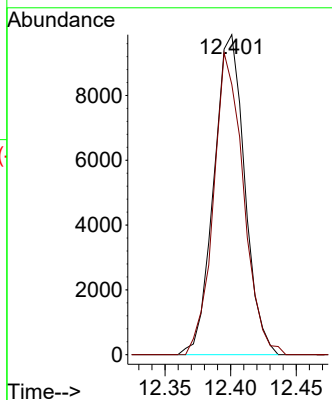
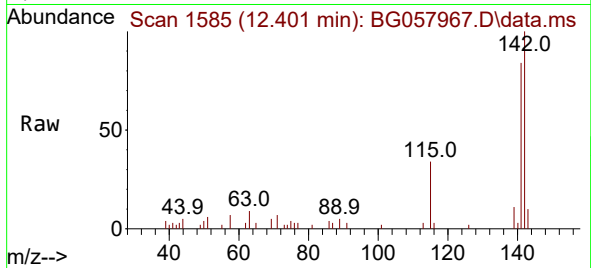




#36  
 2-Methylnaphthalene  
 Concen: 2.009 ng/ul  
 RT: 12.401 min Scan# 11  
 Delta R.T. 0.012 min  
 Lab File: BG057967.D  
 Acq: 3 Jul 2023 23:20

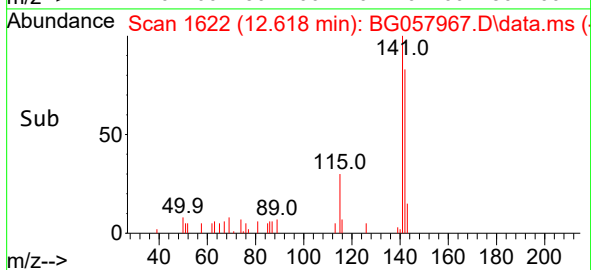
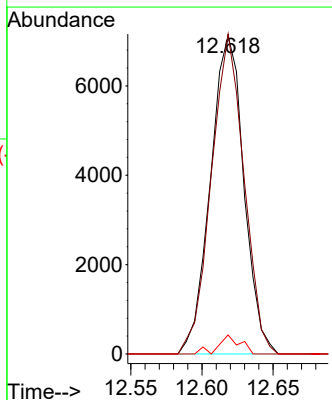
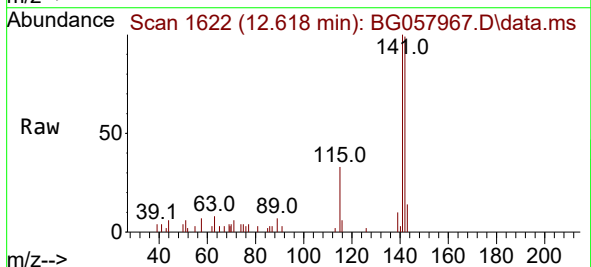
Instrument :  
 BNA\_G  
 ClientSampleId :  
 DCGJ6

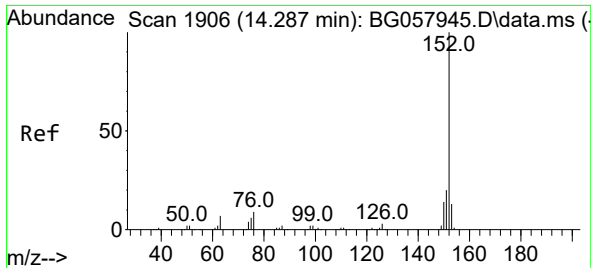
Tgt Ion:142 Resp: 16152  
 Ion Ratio Lower Upper  
 142 100  
 141 84.4 69.4 104.2



#37  
 1-Methylnaphthalene  
 Concen: 1.443 ng/ul  
 RT: 12.618 min Scan# 1622  
 Delta R.T. 0.006 min  
 Lab File: BG057967.D  
 Acq: 3 Jul 2023 23:20

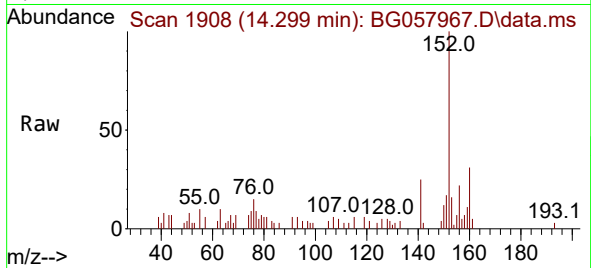
Tgt Ion:142 Resp: 11637  
 Ion Ratio Lower Upper  
 142 100  
 141 100.5 73.8 110.8  
 116 6.0 3.0 4.4#



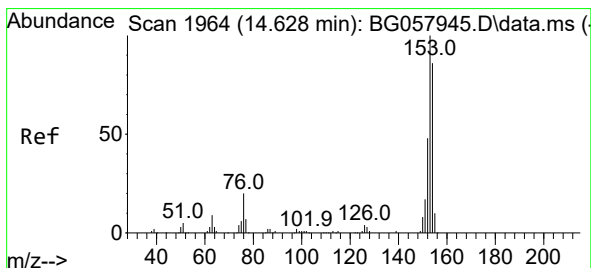
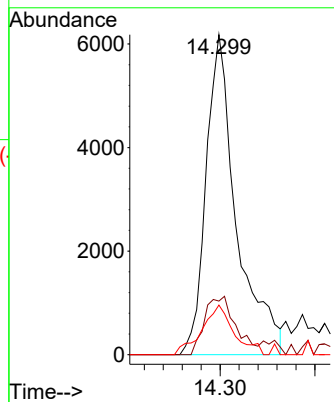
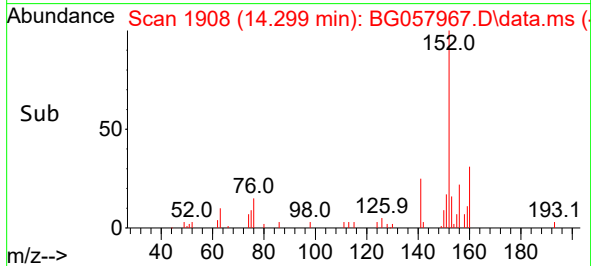


#50  
 Acenaphthylene  
 Concen: 1.040 ng/ul  
 RT: 14.299 min Scan# 1908  
 Delta R.T. 0.012 min  
 Lab File: BG057967.D  
 Acq: 3 Jul 2023 23:20

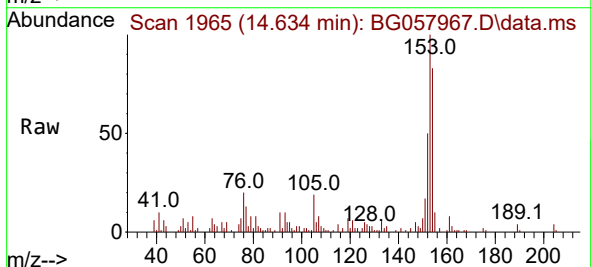
Instrument :  
 BNA\_G  
 ClientSampleId :  
 DCGJ6



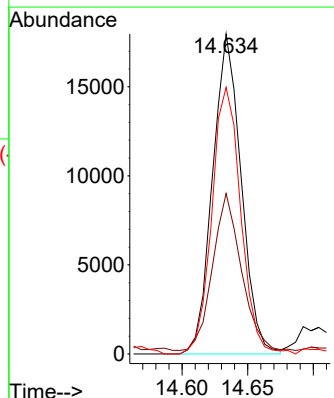
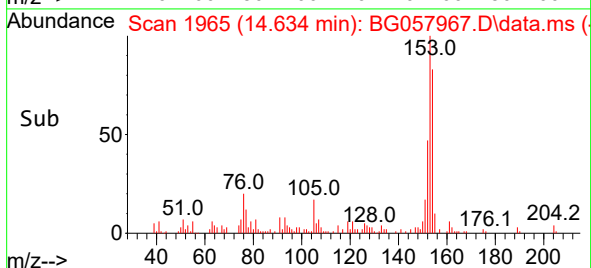
Tgt Ion:152 Resp: 13792  
 Ion Ratio Lower Upper  
 152 100  
 151 16.7 15.6 23.4  
 153 15.5 10.5 15.7

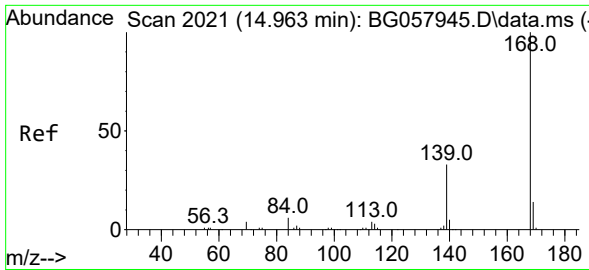


#52  
 Acenaphthene  
 Concen: 2.986 ng/ul  
 RT: 14.634 min Scan# 1965  
 Delta R.T. 0.006 min  
 Lab File: BG057967.D  
 Acq: 3 Jul 2023 23:20



Tgt Ion:153 Resp: 27170  
 Ion Ratio Lower Upper  
 153 100  
 152 50.1 36.5 54.7  
 154 83.3 70.5 105.7

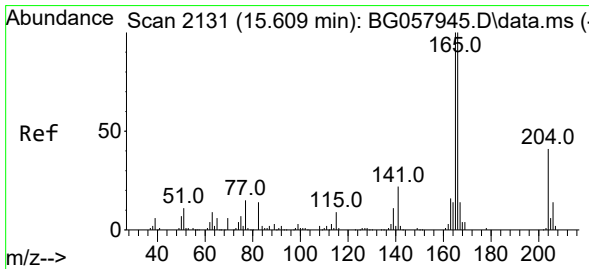
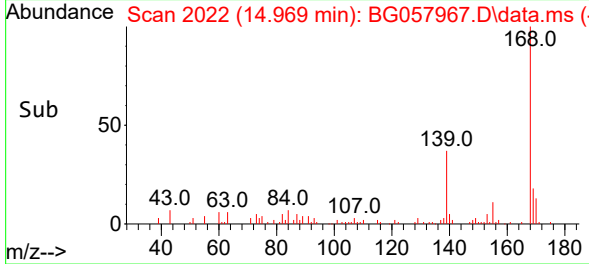
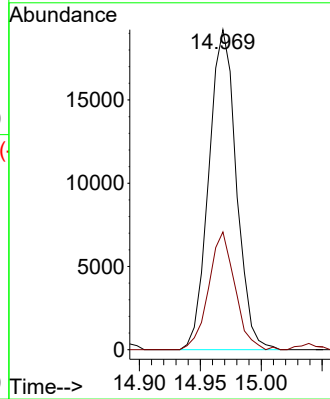
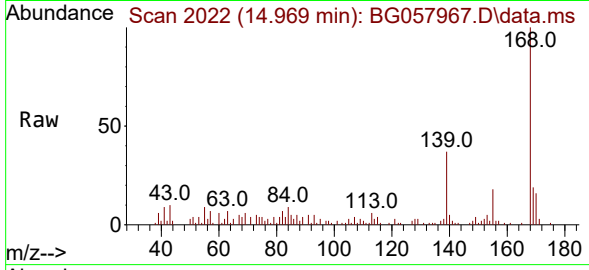




#56  
 Dibenzofuran  
 Concen: 2.338 ng/ul  
 RT: 14.969 min Scan# 2022  
 Delta R.T. 0.006 min  
 Lab File: BG057967.D  
 Acq: 3 Jul 2023 23:20

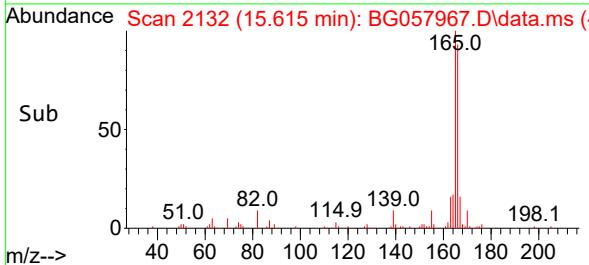
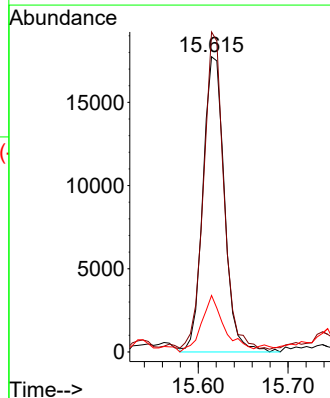
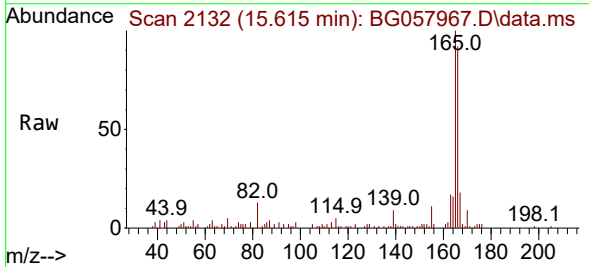
Instrument :  
 BNA\_G  
 ClientSampleId :  
 DCGJ6

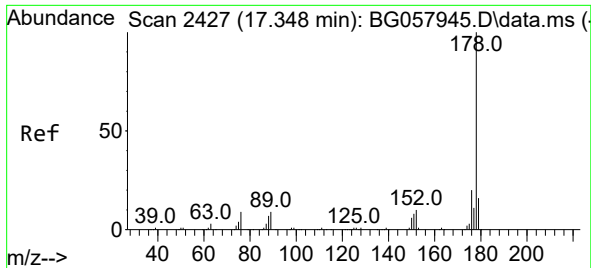
Tgt Ion:168 Resp: 30239  
 Ion Ratio Lower Upper  
 168 100  
 139 36.8 27.6 41.4



#61  
 Fluorene  
 Concen: 2.775 ng/ul  
 RT: 15.615 min Scan# 2132  
 Delta R.T. 0.006 min  
 Lab File: BG057967.D  
 Acq: 3 Jul 2023 23:20

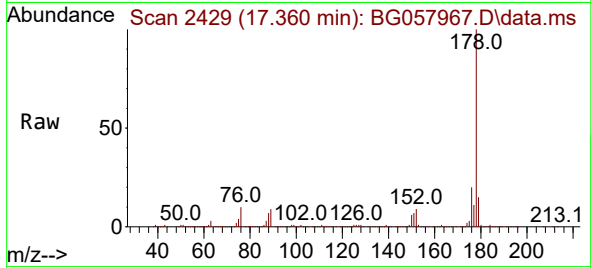
Tgt Ion:166 Resp: 29447  
 Ion Ratio Lower Upper  
 166 100  
 165 108.4 79.1 118.7  
 167 19.1 10.7 16.1#



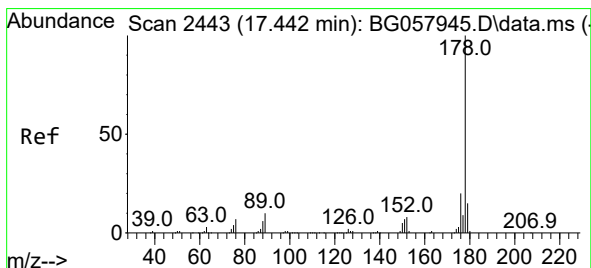
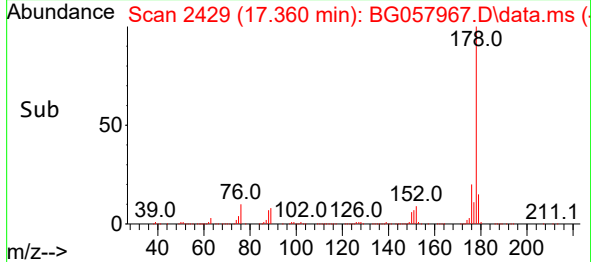
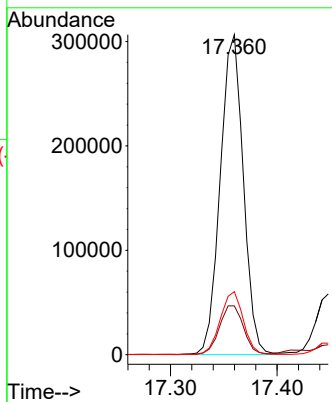


#72  
 Phenanthrene  
 Concen: 30.467 ng/uI  
 RT: 17.360 min Scan# 2427  
 Delta R.T. 0.012 min  
 Lab File: BG057967.D  
 Acq: 3 Jul 2023 23:20

Instrument :  
 BNA\_G  
 ClientSampleId :  
 DCGJ6

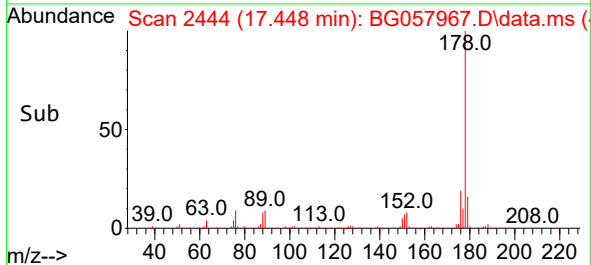
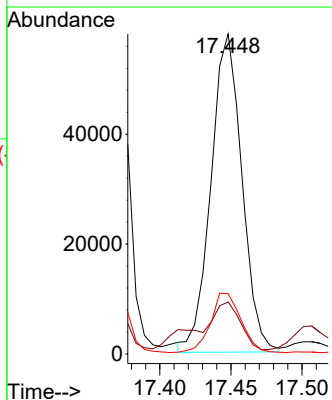
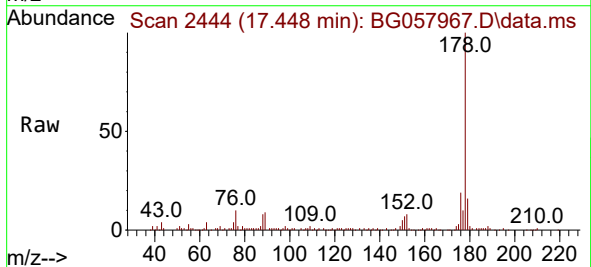


Tgt Ion:178 Resp: 459912  
 Ion Ratio Lower Upper  
 178 100  
 179 15.3 12.8 19.2  
 176 19.7 15.7 23.5

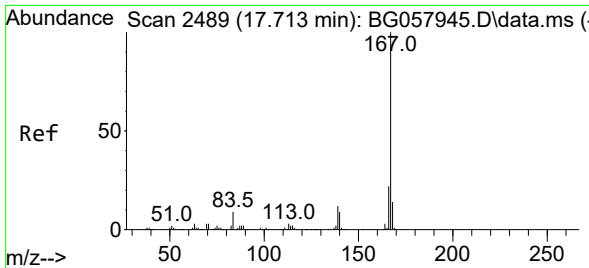


#74  
 Anthracene  
 Concen: 5.748 ng/uI  
 RT: 17.448 min Scan# 2444  
 Delta R.T. 0.006 min  
 Lab File: BG057967.D  
 Acq: 3 Jul 2023 23:20

Tgt Ion:178 Resp: 87804  
 Ion Ratio Lower Upper  
 178 100  
 179 16.2 12.6 18.8  
 176 18.9 15.4 23.2

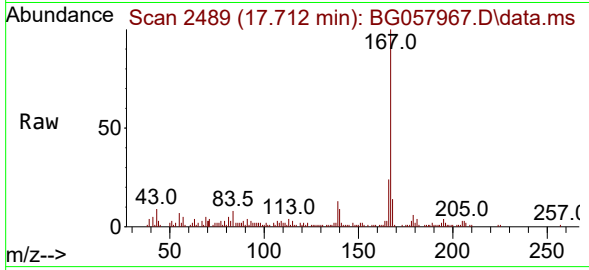




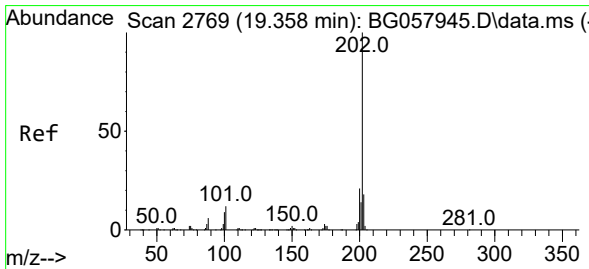
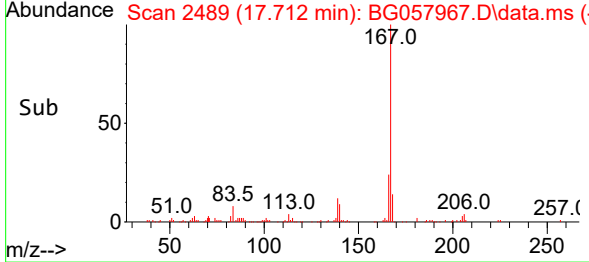
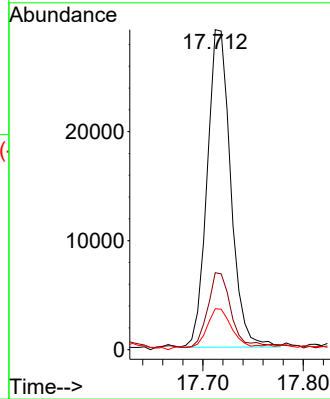


#77  
 Carbazole  
 Concen: 3.439 ng/ul  
 RT: 17.712 min Scan# 2489  
 Delta R.T. 0.000 min  
 Lab File: BG057967.D  
 Acq: 3 Jul 2023 23:20

Instrument :  
 BNA\_G  
 ClientSampleId :  
 DCGJ6

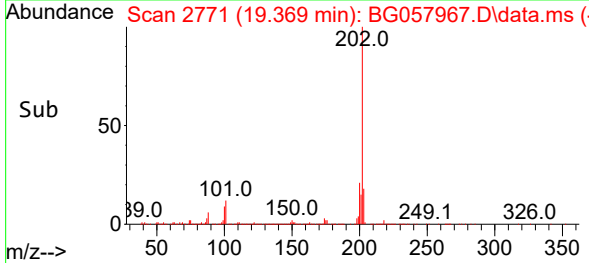
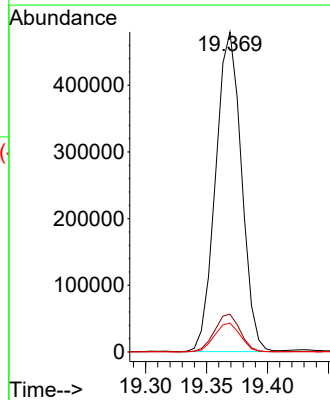
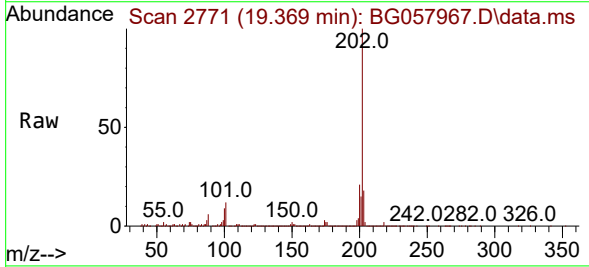


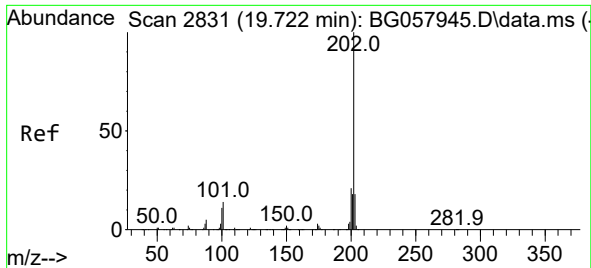
Tgt Ion:167 Resp: 47515  
 Ion Ratio Lower Upper  
 167 100  
 166 24.1 17.5 26.3  
 139 12.8 9.5 14.3



#80  
 Fluoranthene  
 Concen: 40.757 ng/ul  
 RT: 19.369 min Scan# 2771  
 Delta R.T. 0.012 min  
 Lab File: BG057967.D  
 Acq: 3 Jul 2023 23:20

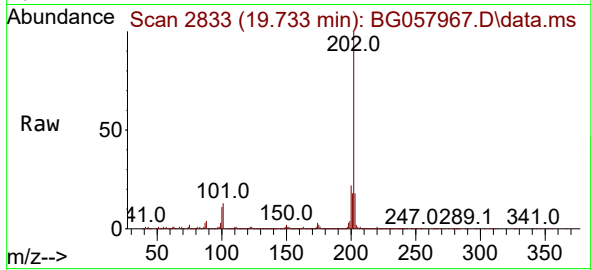
Tgt Ion:202 Resp: 706978  
 Ion Ratio Lower Upper  
 202 100  
 101 11.8 9.1 13.7  
 100 9.0 7.1 10.7



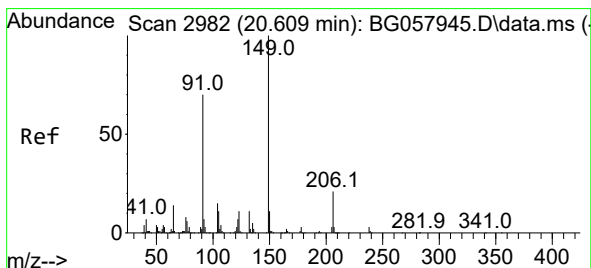
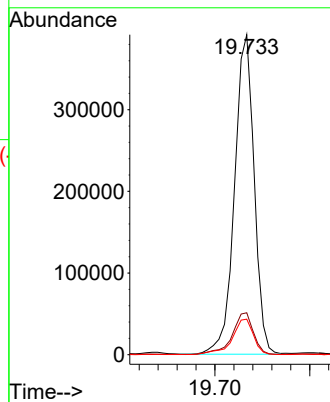
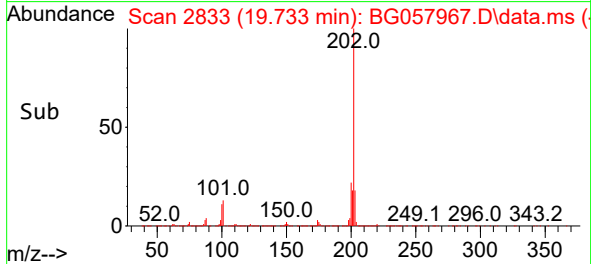


#82  
 Pyrene  
 Concen: 32.267 ng/ul  
 RT: 19.733 min Scan# 2833  
 Delta R.T. 0.012 min  
 Lab File: BG057967.D  
 Acq: 3 Jul 2023 23:20

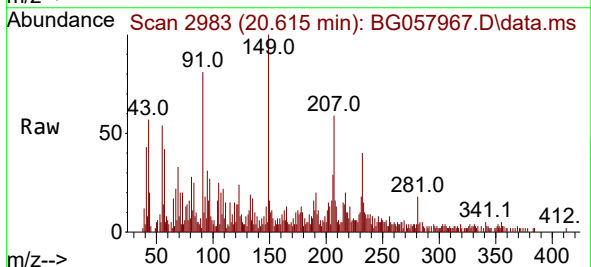
Instrument :  
 BNA\_G  
 ClientSampleId :  
 DCGJ6



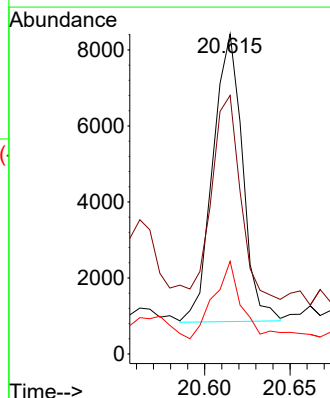
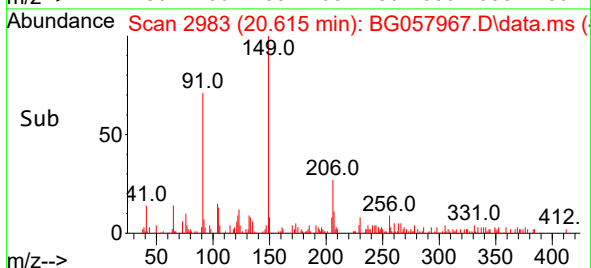
Tgt Ion:202 Resp: 563406  
 Ion Ratio Lower Upper  
 202 100  
 101 13.1 10.2 15.2  
 100 11.1 8.9 13.3

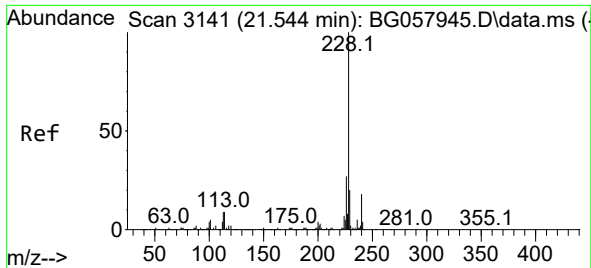


#83  
 Butylbenzylphthalate  
 Concen: 1.291 ng/ul  
 RT: 20.615 min Scan# 2983  
 Delta R.T. 0.006 min  
 Lab File: BG057967.D  
 Acq: 3 Jul 2023 23:20



Tgt Ion:149 Resp: 9142  
 Ion Ratio Lower Upper  
 149 100  
 91 80.8 56.5 84.7  
 206 28.9 17.4 26.0#



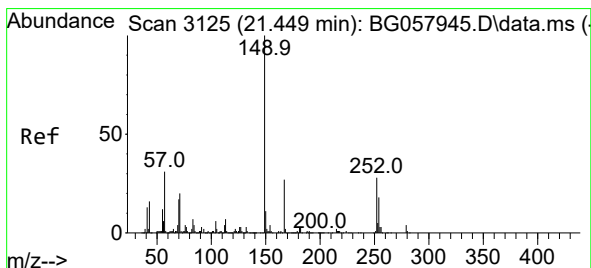
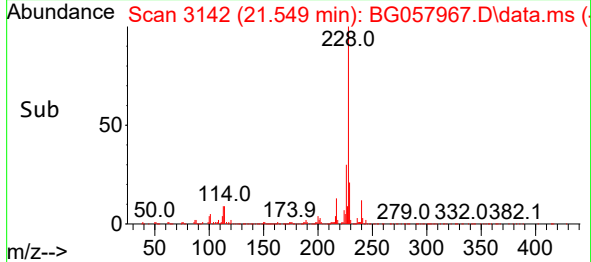
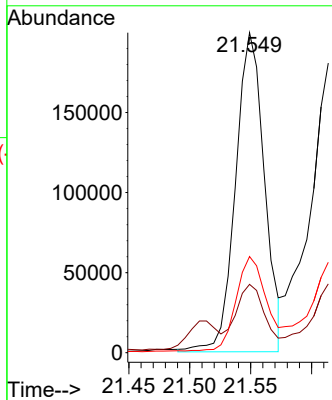
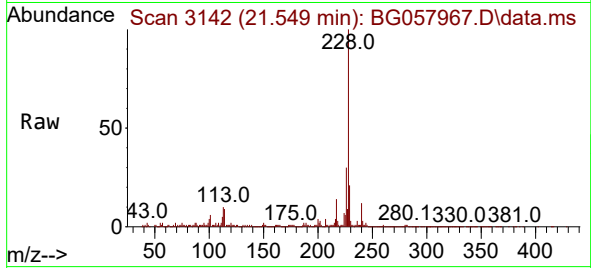


#85  
 Benzo(a)anthracene  
 Concen: 19.279 ng/ul  
 RT: 21.549 min Scan# 3142  
 Delta R.T. 0.006 min  
 Lab File: BG057967.D  
 Acq: 3 Jul 2023 23:20

Instrument :  
 BNA\_G  
 ClientSampleId :  
 DCGJ6

Tgt Ion:228 Resp: 329020

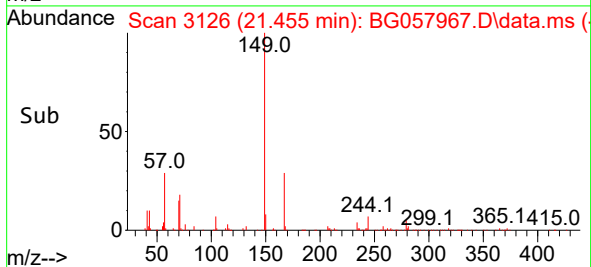
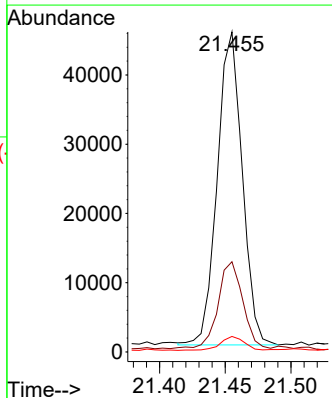
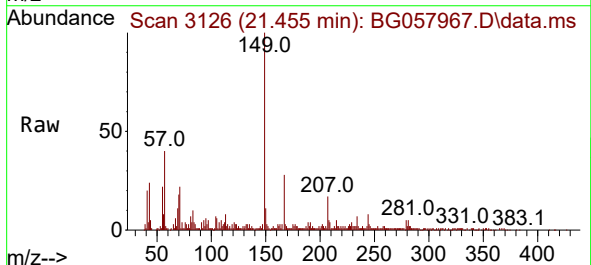
Ion	Ratio	Lower	Upper
228	100		
229	21.4	16.0	24.0
226	30.0	22.0	33.0

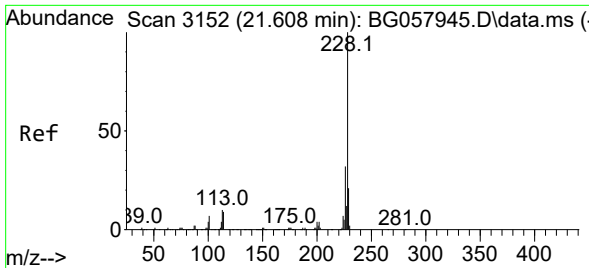


#86  
 Bis(2-ethylhexyl)phthalate  
 Concen: 5.890 ng/ul  
 RT: 21.455 min Scan# 3126  
 Delta R.T. 0.006 min  
 Lab File: BG057967.D  
 Acq: 3 Jul 2023 23:20

Tgt Ion:149 Resp: 59766

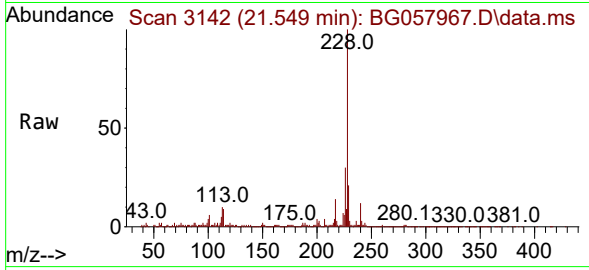
Ion	Ratio	Lower	Upper
149	100		
167	28.2	20.9	31.3
279	4.9	3.1	4.7#



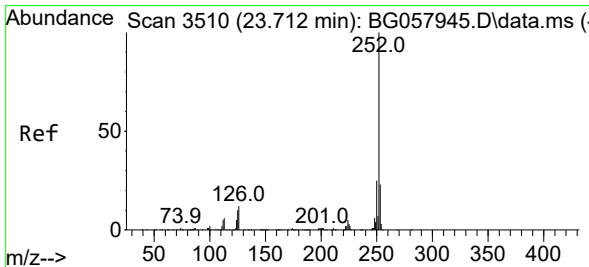
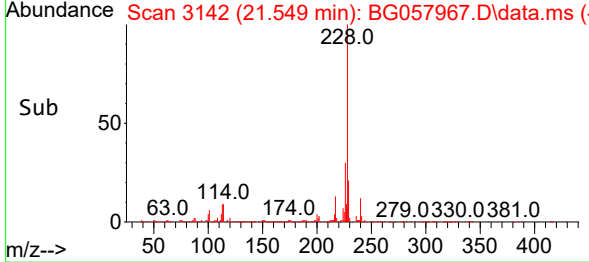
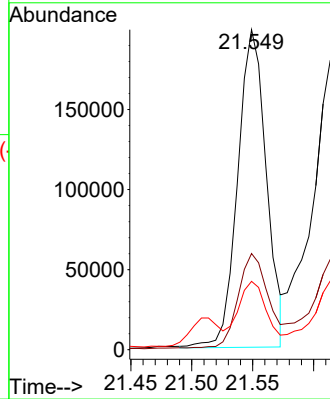


#87  
 Chrysene  
 Concen: 20.317 ng/ul  
 RT: 21.549 min Scan# 3142  
 Delta R.T. -0.059 min  
 Lab File: BG057967.D  
 Acq: 3 Jul 2023 23:20

Instrument :  
 BNA\_G  
 ClientSampleId :  
 DCGJ6

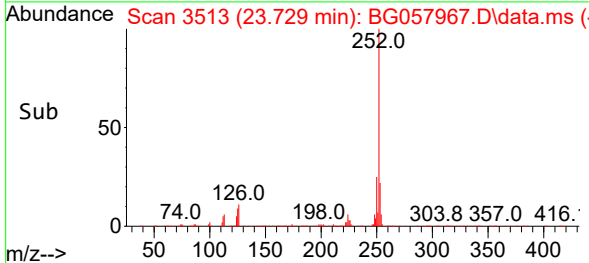
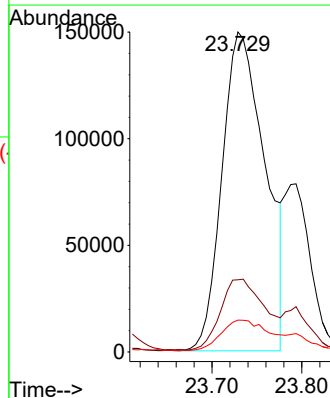
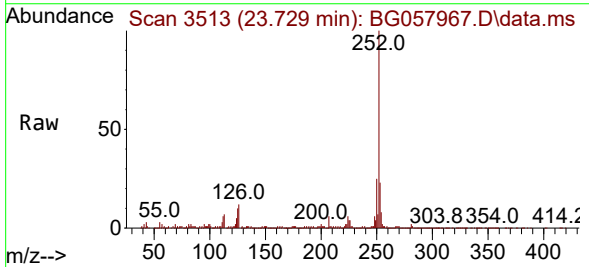


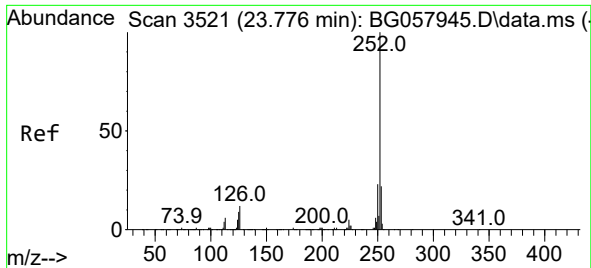
Tgt Ion:228 Resp: 325039  
 Ion Ratio Lower Upper  
 228 100  
 226 30.0 24.4 36.6  
 229 21.4 15.5 23.3



#90  
 Benzo(b)fluoranthene  
 Concen: 26.918 ng/ul  
 RT: 23.729 min Scan# 3513  
 Delta R.T. 0.018 min  
 Lab File: BG057967.D  
 Acq: 3 Jul 2023 23:20

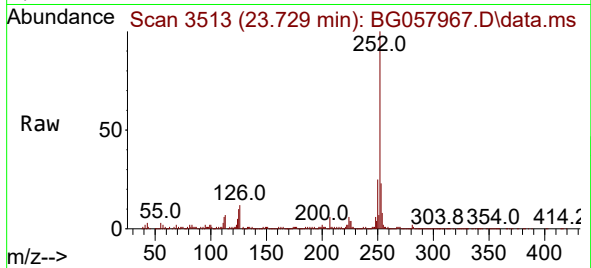
Tgt Ion:252 Resp: 497748  
 Ion Ratio Lower Upper  
 252 100  
 253 22.6 18.1 27.1  
 125 10.0 7.5 11.3



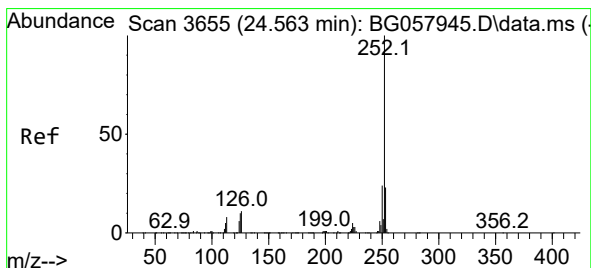
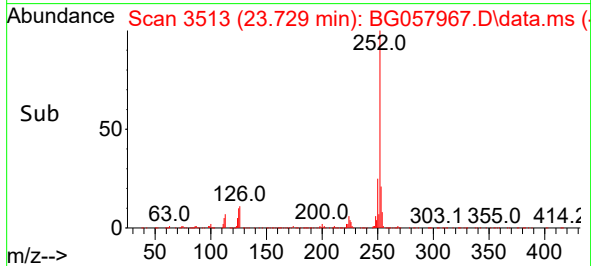
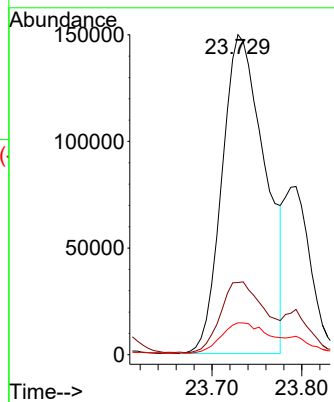


#91  
 Benzo(k)fluoranthene  
 Concen: 27.463 ng/u1  
 RT: 23.729 min Scan# 31  
 Delta R.T. -0.047 min  
 Lab File: BG057967.D  
 Acq: 3 Jul 2023 23:20

Instrument :  
 BNA\_G  
 ClientSampleId :  
 DCGJ6

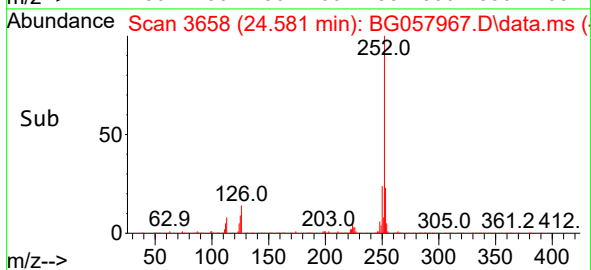
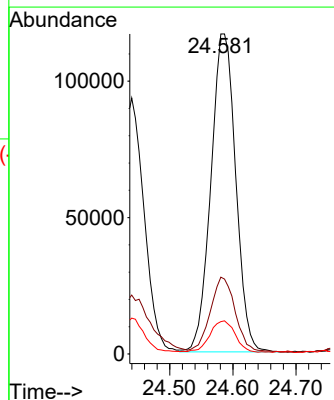
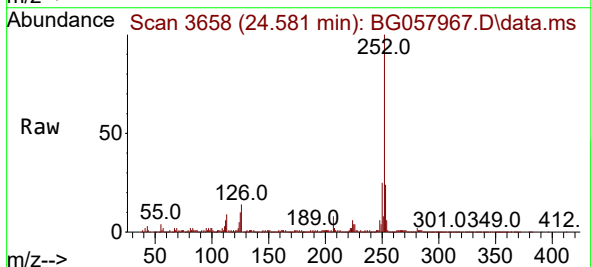


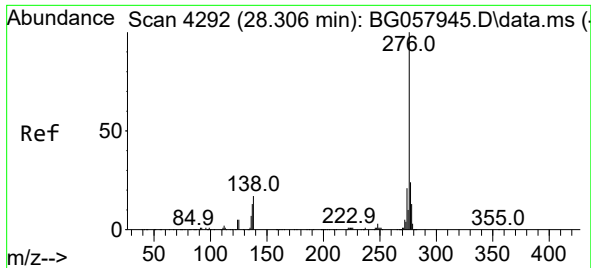
Tgt Ion:252 Resp: 497748  
 Ion Ratio Lower Upper  
 252 100  
 253 22.6 17.7 26.5  
 125 10.0 7.4 11.2



#93  
 Benzo(a)pyrene  
 Concen: 19.438 ng/u1  
 RT: 24.581 min Scan# 3658  
 Delta R.T. 0.012 min  
 Lab File: BG057967.D  
 Acq: 3 Jul 2023 23:20

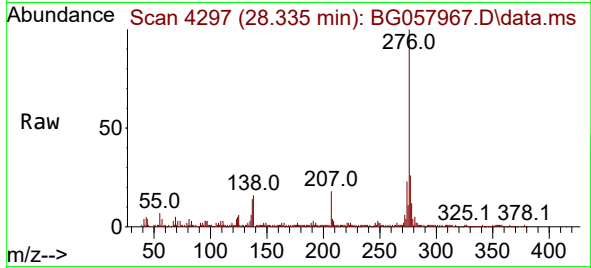
Tgt Ion:252 Resp: 318127  
 Ion Ratio Lower Upper  
 252 100  
 253 24.0 17.8 26.6  
 125 10.1 8.3 12.5



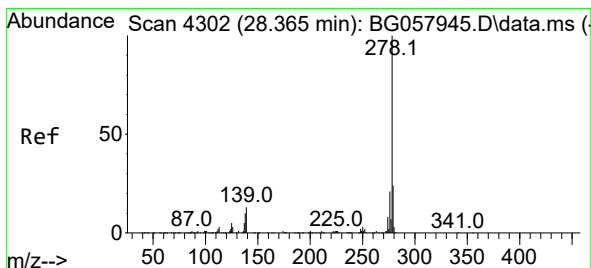
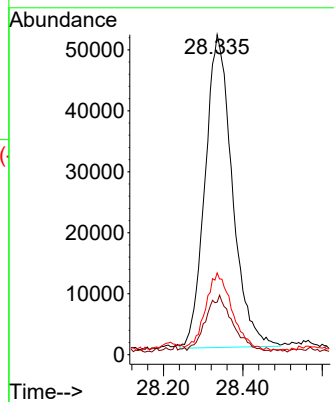
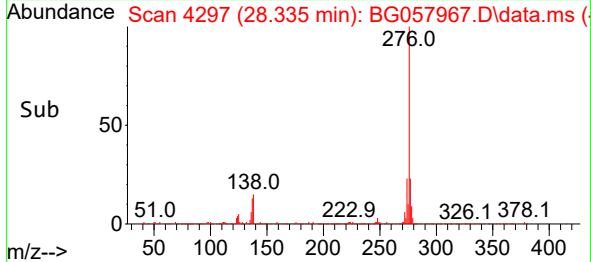


#94  
 Indeno(1,2,3-cd)pyrene  
 Concen: 11.232 ng/uI  
 RT: 28.335 min Scan# 4304  
 Delta R.T. 0.030 min  
 Lab File: BG057967.D  
 Acq: 3 Jul 2023 23:20

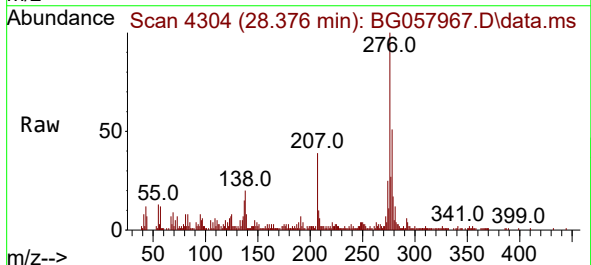
Instrument :  
 BNA\_G  
 ClientSampleId :  
 DCGJ6



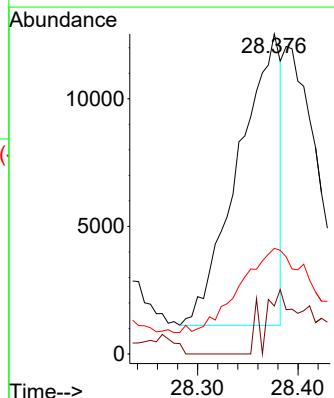
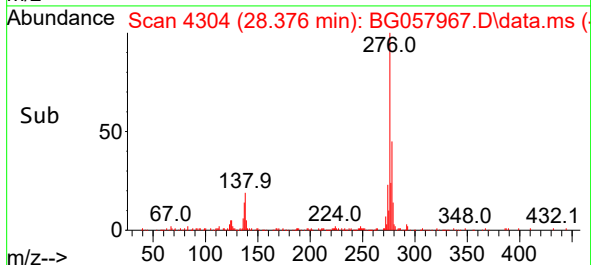
Tgt Ion:276 Resp: 244107  
 Ion Ratio Lower Upper  
 276 100  
 138 16.4 14.0 21.0  
 277 25.6 19.4 29.2

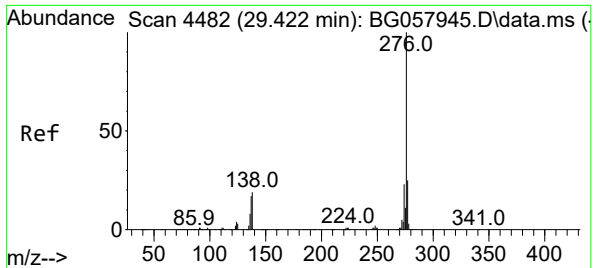


#95  
 Dibenzo(a,h)anthracene  
 Concen: 1.867 ng/uI  
 RT: 28.376 min Scan# 4304  
 Delta R.T. 0.006 min  
 Lab File: BG057967.D  
 Acq: 3 Jul 2023 23:20



Tgt Ion:278 Resp: 33465  
 Ion Ratio Lower Upper  
 278 100  
 139 15.0 11.3 16.9  
 279 33.0 18.9 28.3#





#96  
 Benzo(g,h,i)perylene  
 Concen: 11.492 ng/ul  
 RT: 29.463 min Scan# 4489  
 Delta R.T. 0.035 min  
 Lab File: BG057967.D  
 Acq: 3 Jul 2023 23:20

Instrument :  
 BNA\_G  
 ClientSampleId :  
 DCGJ6

Tgt Ion: 276 Resp: 204007

Ion	Ratio	Lower	Upper
276	100		
138	18.4	14.2	21.2
277	23.7	18.6	27.8

