

Data Path : Z:\svoasrv\HPCHEM1\BNA_G\Data\BG070324\
 Data File : BG061862.D
 Acq On : 3 Jul 2024 13:14
 Operator : MA/JU
 Sample : P3065-14
 Misc :
 ALS Vial : 6 Sample Multiplier: 1

Instrument :
 BNA_G
 ClientSampleId :
 A4DN0

Quant Time: Jul 03 13:52:05 2024
 Quant Method : Z:\svoasrv\HPCHEM1\BNA_G\Methods\SFAM-EPA-BG070224.MA.M
 Quant Title : SVOA CALIBRATION
 QLast Update : Wed Jul 03 02:38:46 2024
 Response via : Initial Calibration

Compound	R.T.	QIon	Response	Conc	Units	Dev(Min)
Internal Standards						
1) 1,4-Dichlorobenzene-d4	8.094	152	41855	20.000	ng/ul	0.00
20) Naphthalene-d8	10.915	136	204934	20.000	ng/ul	0.00
38) Acenaphthene-d10	14.722	164	148166	20.000	ng/ul	0.00
64) Phenanthrene-d10	17.466	188	334950	20.000	ng/ul	0.00
79) Chrysene-d12	21.731	240	278760	20.000	ng/ul	0.00
88) Perylene-d12	24.969	264	333832	20.000	ng/ul	0.00
System Monitoring Compounds						
3) 1,4-Dioxane-d8	3.482	96	3399	3.052	ng/uL	0.00
4) Pyridine-d5	0.000	84	0d	0.000	ng/ul	
7) Phenol-d5	7.248	99	76289	16.655	ng/ul	0.00
9) Bis-(2-Chloroethyl)eth...	7.419	67	46159	15.913	ng/ul	0.00
11) 2-Chlorophenol-d4	7.624	132	54342	17.296	ng/ul	0.00
15) 4-Methylphenol-d8	8.805	113	61910	17.167	ng/ul	0.00
21) Nitrobenzene-d5	9.264	128	29560	18.966	ng/ul	0.00
24) 2-Nitrophenol-d4	9.986	143	32848	18.455	ng/ul	0.00
28) 2,4-Dichlorophenol-d3	10.527	165	66740	19.440	ng/ul	0.00
31) 4-Chloroaniline-d4	11.044	131	79698	15.990	ng/ul	0.00
46) Dimethylphthalate-d6	14.128	166	338420	27.782	ng/ul	0.00
49) Acenaphthylene-d8	14.416	160	295005	23.161	ng/ul	0.00
54) 4-Nitrophenol-d4	14.922	143	59828	30.755	ng/ul	0.00
60) Fluorene-d10	15.709	176	282947	27.592	ng/ul	0.00
65) 4,6-Dinitro-2-methylph...	15.826	200	53794	30.580	ng/ul	0.00
73) Anthracene-d10	17.566	188	509756	32.597	ng/ul	0.00
81) Pyrene-d10	19.839	212	559375	34.116	ng/ul	0.00
92) Benzo(a)pyrene-d12	24.745	264	567482	34.276	ng/ul	0.00
Target Compounds						
8) Phenol	7.278	94	414652	88.420	ng/ul	96
10) Bis(2-Chloroethyl)ether	7.513	93	95216	26.430	ng/ul	93
12) 2-Chlorophenol	7.660	128	178968	55.910	ng/ul	90
17) N-Nitroso-di-n-propyla...	8.899	70	254451	76.295	ng/ul	98
19) Hexachloroethane	9.181	117	106754	76.879	ng/ul	88
22) Nitrobenzene	9.305	77	129106	29.182	ng/ul	99
25) 2-Nitrophenol	10.016	139	74414	40.996	ng/ul	93
27) Bis(2-Chloroethoxy)met...	10.309	93	232227	42.190	ng/ul	99
29) 2,4-Dichlorophenol	10.556	162	121659	37.725	ng/ul	95
30) Naphthalene	10.962	128	1182522	105.047	ng/ul	96
35) 4-Chloro-3-methylphenol	12.178	107	335549	78.126	ng/ul	95
41) 2,4,6-Trichlorophenol	13.159	196	145174	49.123	ng/ul	95
42) 2,4,5-Trichlorophenol	13.230	196	360832	111.147	ng/ul	91
44) 2-Chloronaphthalene	13.606	162	388434	45.336	ng/ul	92
48) 2,6-Dinitrotoluene	14.305	165	440708	198.276	ng/ul	94
50) Acenaphthylene	14.452	152	1585201	113.394	ng/ul	98
52) Acenaphthene	14.787	153	855992	88.676	ng/ul	95
55) 4-Nitrophenol	14.945	109	345967	155.826	ng/ul	95
57) 2,4-Dinitrotoluene	15.086	165	378773	116.200	ng/ul#	95
59) Diethylphthalate	15.539	149	1951280	154.547	ng/ul	96
61) Fluorene	15.768	166	441082	38.016	ng/ul	92
62) 4-Chlorophenyl-phenyle...	15.762	204	665109	114.125	ng/ul	93
69) Hexachlorobenzene	16.772	284	915567	209.538	ng/ul	98
71) Pentachlorophenol	17.113	266	456097	189.902	ng/ul	94

Data Path : Z:\svoasrv\HPCHEM1\BNA_G\Data\BG070324\
 Data File : BG061862.D
 Acq On : 3 Jul 2024 13:14
 Operator : MA/JU
 Sample : P3065-14
 Misc :
 ALS Vial : 6 Sample Multiplier: 1

Instrument :
 BNA_G
 ClientSampleId :
 A4DN0

Quant Time: Jul 03 13:52:05 2024
 Quant Method : Z:\svoasrv\HPCHEM1\BNA_G\Methods\SFAM-EPA-BG070224.MA.M
 Quant Title : SVOA CALIBRATION
 QLast Update : Wed Jul 03 02:38:46 2024
 Response via : Initial Calibration

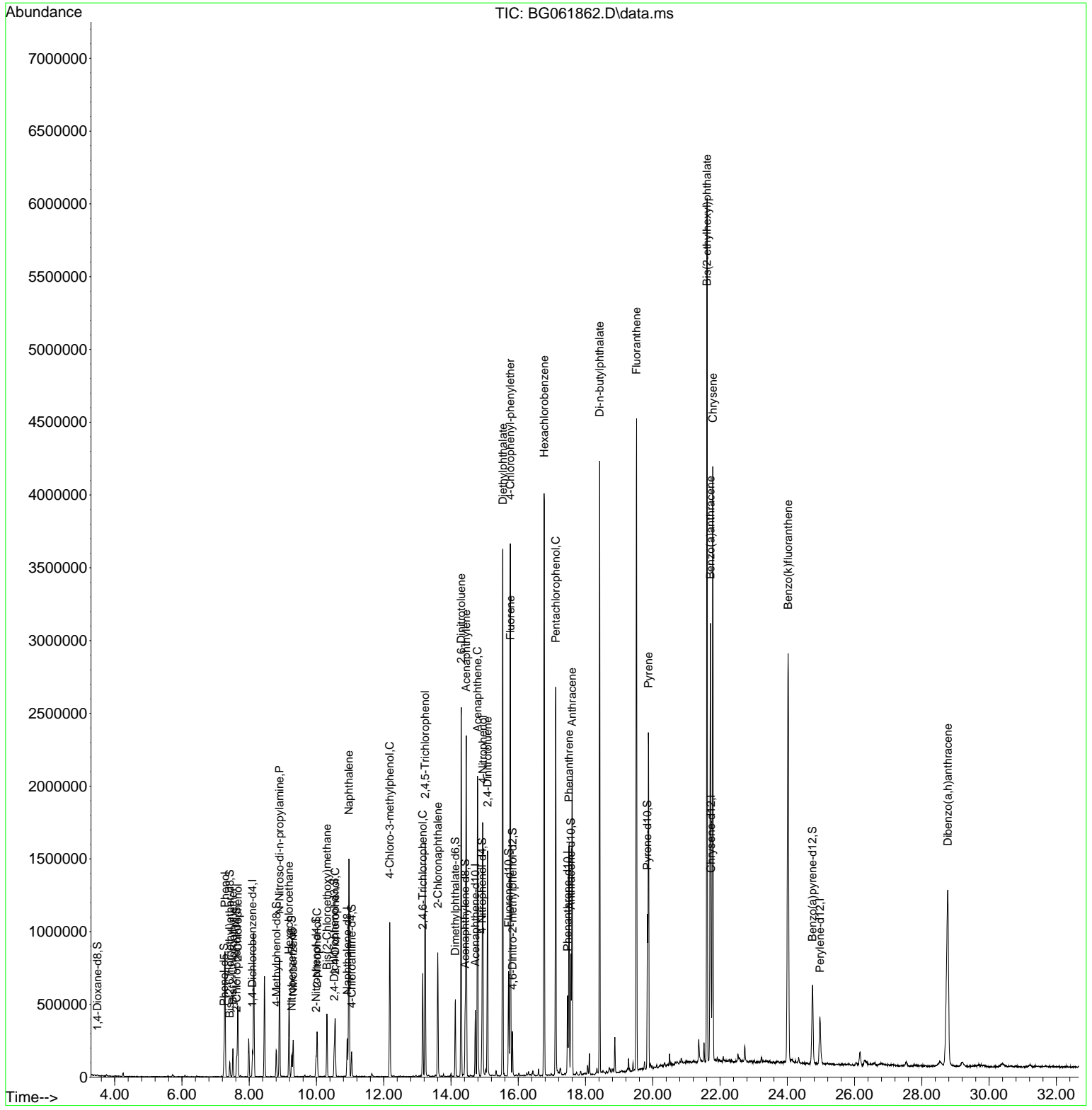
Compound	R.T.	QIon	Response	Conc	Units	Dev(Min)
72) Phenanthrene	17.507	178	942153	53.346	ng/ul	99
74) Anthracene	17.601	178	1260762	69.076	ng/ul	99
78) Di-n-butylphthalate	18.418	149	2723042	138.078	ng/ul#	96
80) Fluoranthene	19.516	202	2826381	145.658	ng/ul	99
82) Pyrene	19.869	202	1479432	73.809	ng/ul	99
85) Benzo(a)anthracene	21.714	228	2110138	104.549	ng/ul	98
86) Bis(2-ethylhexyl)phtha...	21.614	149	2153249	178.382	ng/ul	99
87) Chrysene	21.784	228	2642472	139.854	ng/ul	96
91) Benzo(k)fluoranthene	24.023	252	3092338	147.439	ng/ul	97
95) Dibenzo(a,h)anthracene	28.770	278	2198425	104.584	ng/ul	100

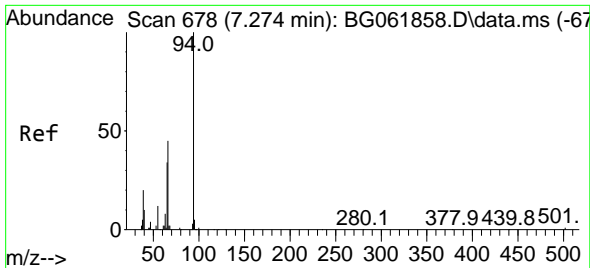
(#) = qualifier out of range (m) = manual integration (+) = signals summed

Data Path : Z:\svoasrv\HPCHEM1\BNA_G\Data\BG070324\
 Data File : BG061862.D
 Acq On : 3 Jul 2024 13:14
 Operator : MA/JU
 Sample : P3065-14
 Misc :
 ALS Vial : 6 Sample Multiplier: 1

Instrument :
 BNA_G
 ClientSampleId :
 A4DN0

Quant Time: Jul 03 13:52:05 2024
 Quant Method : Z:\svoasrv\HPCHEM1\BNA_G\Methods\SFAM-EPA-BG070224.MA.M
 Quant Title : SVOA CALIBRATION
 QLast Update : Wed Jul 03 02:38:46 2024
 Response via : Initial Calibration

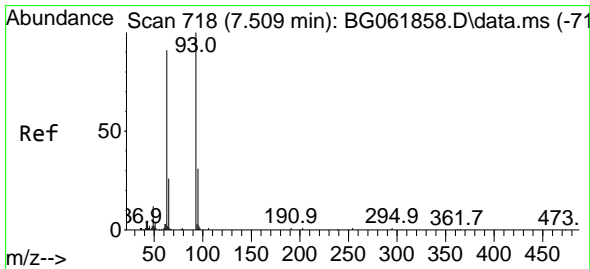
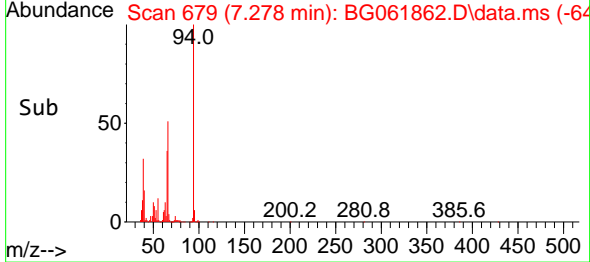
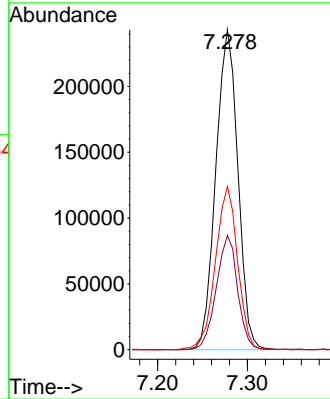
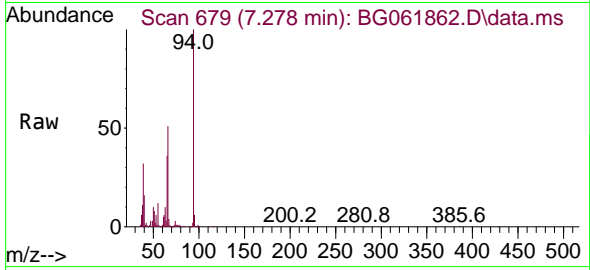




#8
 Phenol
 Concen: 88.420 ng/ul
 RT: 7.278 min Scan# 61
 Delta R.T. 0.000 min
 Lab File: BG061862.D
 Acq: 3 Jul 2024 13:14

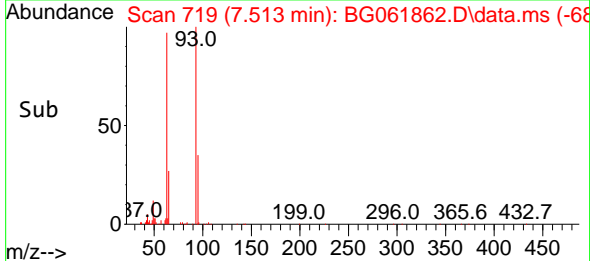
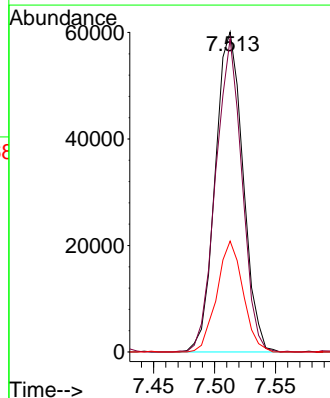
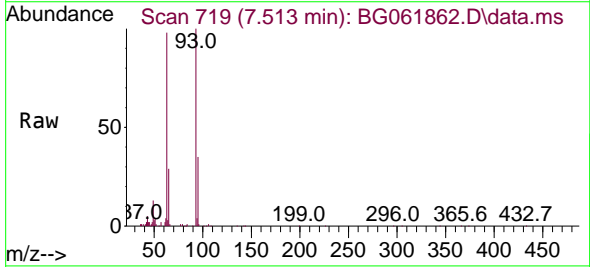
Instrument :
 BNA_G
 ClientSampleId :
 A4DN0

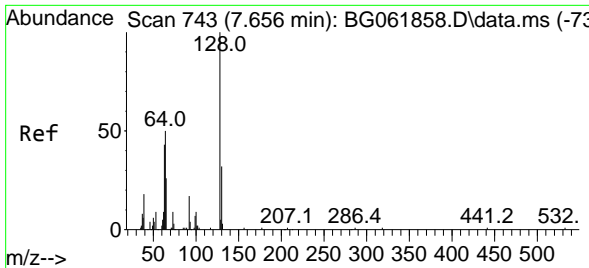
Tgt Ion: 94 Resp: 414652
 Ion Ratio Lower Upper
 94 100
 65 35.7 29.0 43.4
 66 51.0 37.4 56.2



#10
 Bis(2-Chloroethyl)ether
 Concen: 26.430 ng/ul
 RT: 7.513 min Scan# 719
 Delta R.T. 0.000 min
 Lab File: BG061862.D
 Acq: 3 Jul 2024 13:14

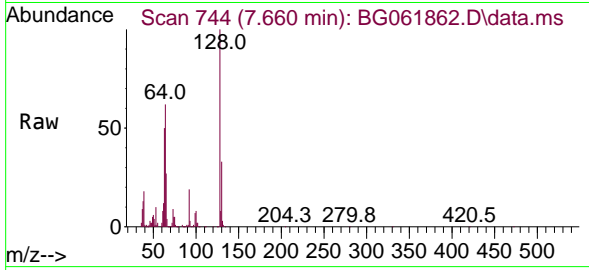
Tgt Ion: 93 Resp: 95216
 Ion Ratio Lower Upper
 93 100
 63 97.9 72.2 108.2
 95 34.6 26.7 40.1



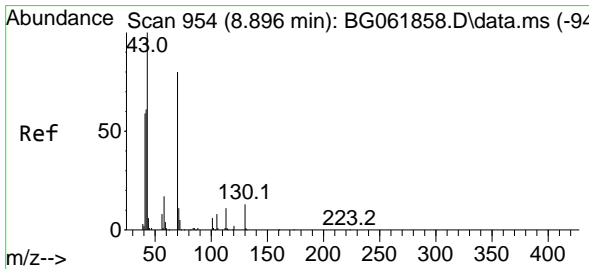
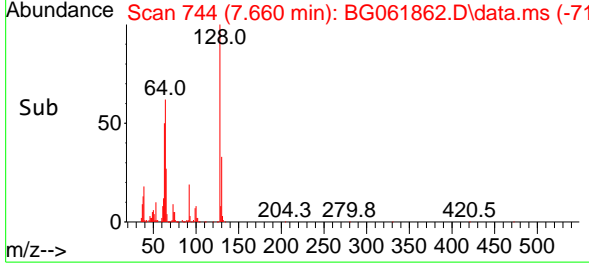
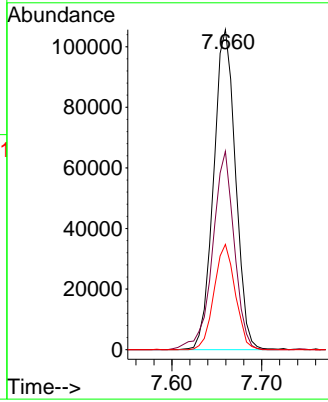


#12
 2-Chlorophenol
 Concen: 55.910 ng/ul
 RT: 7.660 min Scan# 743
 Delta R.T. 0.000 min
 Lab File: BG061862.D
 Acq: 3 Jul 2024 13:14

Instrument :
 BNA_G
 ClientSampleId :
 A4DN0

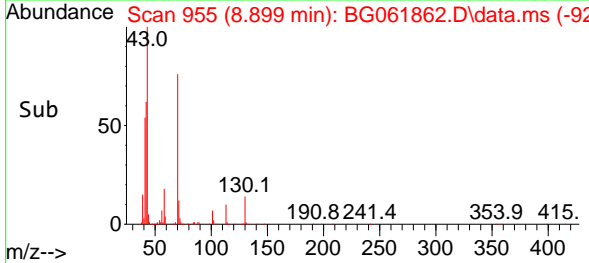
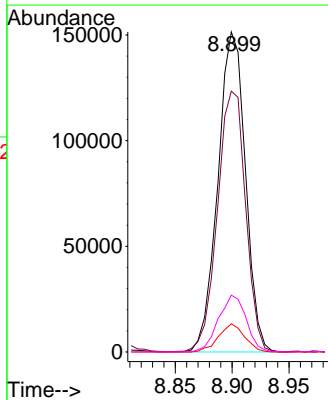
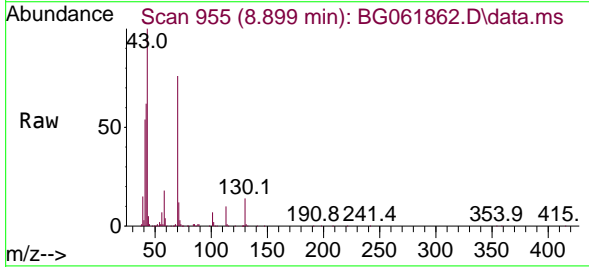


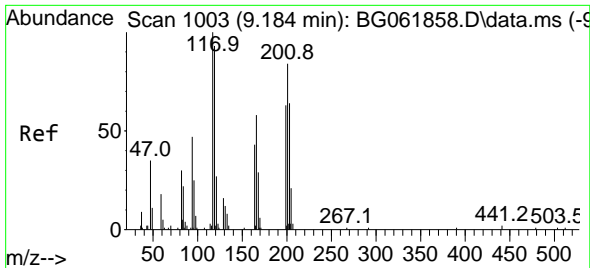
Tgt Ion:128 Resp: 178968
 Ion Ratio Lower Upper
 128 100
 64 62.0 42.6 63.8
 130 32.9 23.3 34.9



#17
 N-Nitroso-di-n-propylamine
 Concen: 76.295 ng/ul
 RT: 8.899 min Scan# 955
 Delta R.T. 0.000 min
 Lab File: BG061862.D
 Acq: 3 Jul 2024 13:14

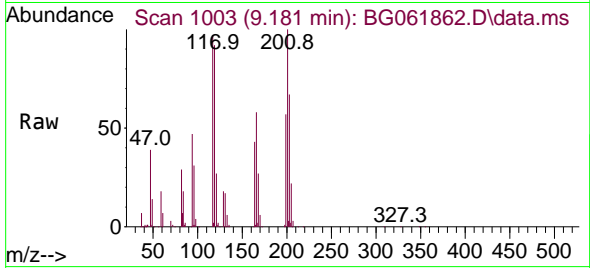
Tgt Ion: 70 Resp: 254451
 Ion Ratio Lower Upper
 70 100
 42 81.5 64.7 97.1
 101 8.8 7.3 10.9
 130 17.8 17.0 25.6





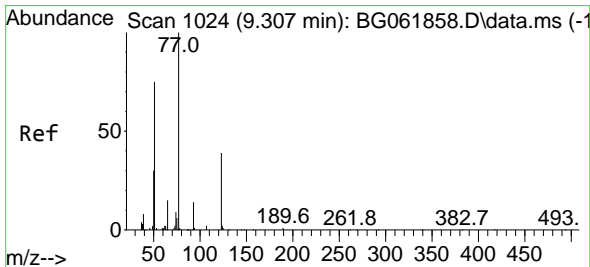
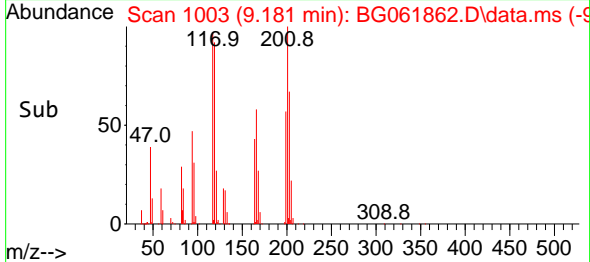
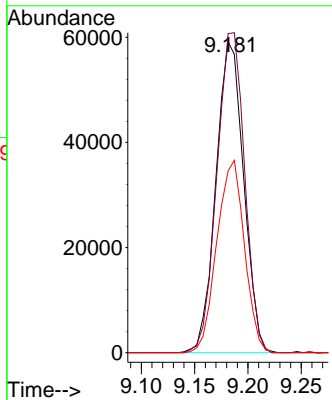
#19
 Hexachloroethane
 Concen: 76.879 ng/ul
 RT: 9.181 min Scan# 1003
 Delta R.T. 0.000 min
 Lab File: BG061862.D
 Acq: 3 Jul 2024 13:14

Instrument :
 BNA_G
 ClientSampleId :
 A4DN0



Tgt Ion: 117 Resp: 106754

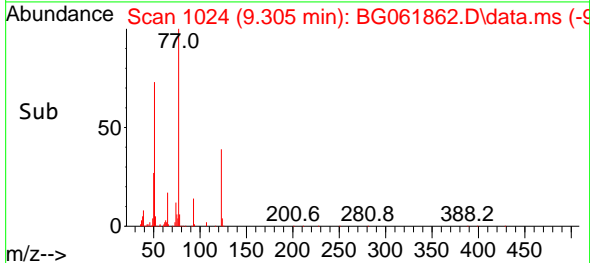
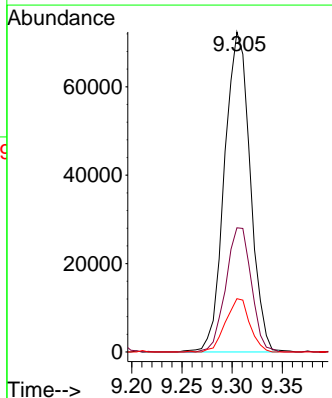
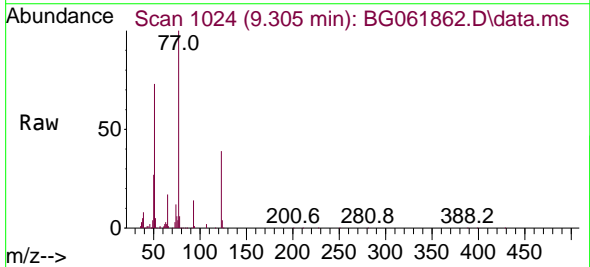
Ion	Ratio	Lower	Upper
117	100		
201	102.6	69.3	103.9
199	58.5	48.9	73.3

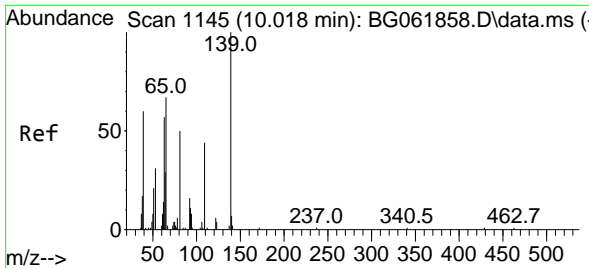


#22
 Nitrobenzene
 Concen: 29.182 ng/ul
 RT: 9.305 min Scan# 1024
 Delta R.T. -0.006 min
 Lab File: BG061862.D
 Acq: 3 Jul 2024 13:14

Tgt Ion: 77 Resp: 129106

Ion	Ratio	Lower	Upper
77	100		
123	38.8	31.0	46.6
65	16.6	12.7	19.1

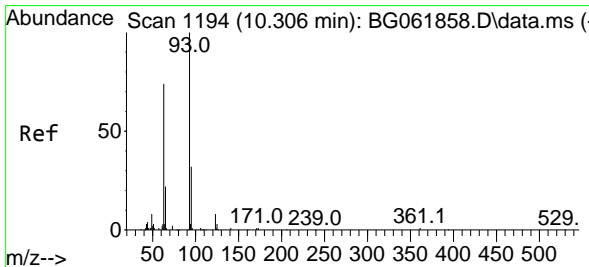
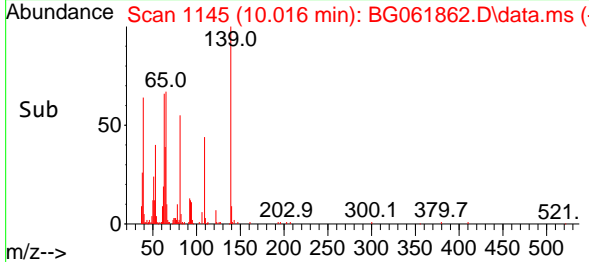
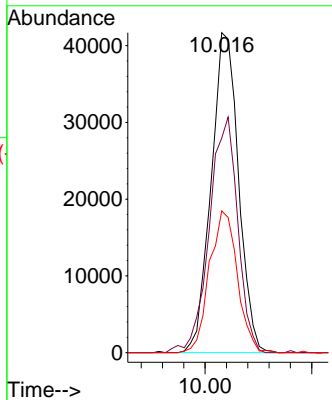
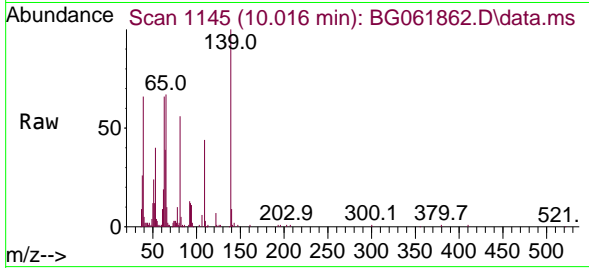




#25
 2-Nitrophenol
 Concen: 40.996 ng/ul
 RT: 10.016 min Scan# 1145
 Delta R.T. 0.000 min
 Lab File: BG061862.D
 Acq: 3 Jul 2024 13:14

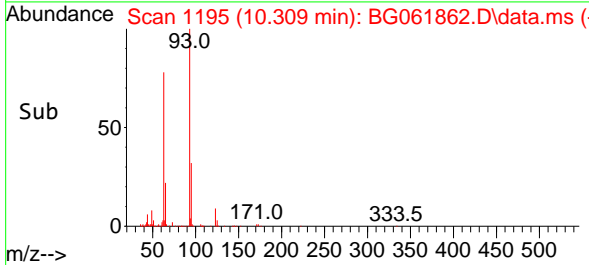
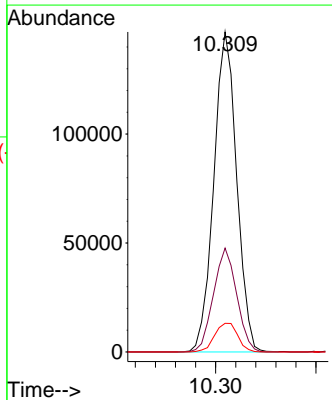
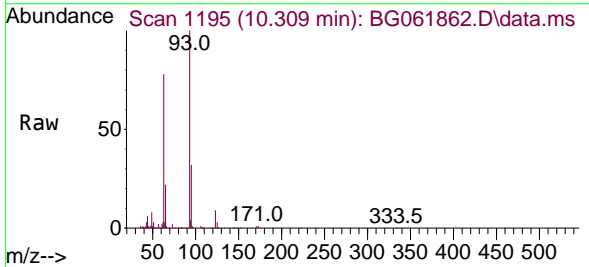
Instrument :
 BNA_G
 ClientSampleId :
 A4DN0

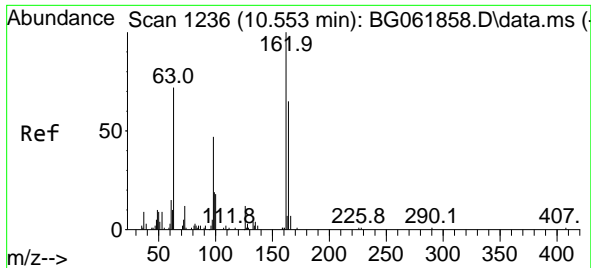
Tgt Ion	Resp	Lower	Upper
139	74414		
65	67.0	61.6	92.4
109	44.3	35.4	53.2



#27
 Bis(2-Chloroethoxy)methane
 Concen: 42.190 ng/ul
 RT: 10.309 min Scan# 1195
 Delta R.T. 0.000 min
 Lab File: BG061862.D
 Acq: 3 Jul 2024 13:14

Tgt Ion	Resp	Lower	Upper
93	232227		
95	32.4	26.2	39.2
123	9.0	7.5	11.3



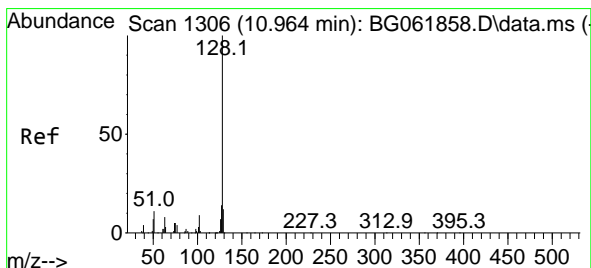
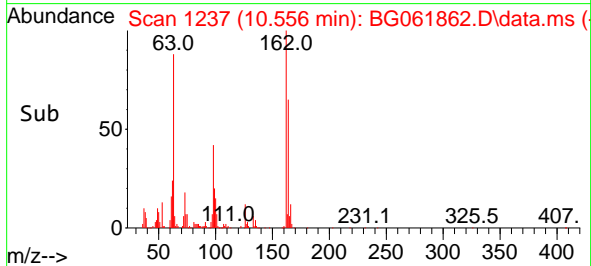
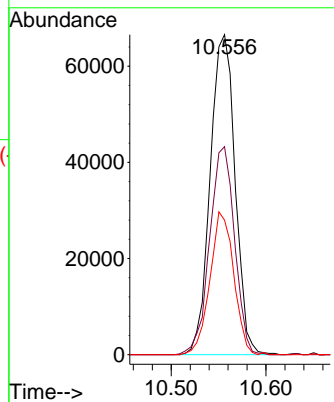
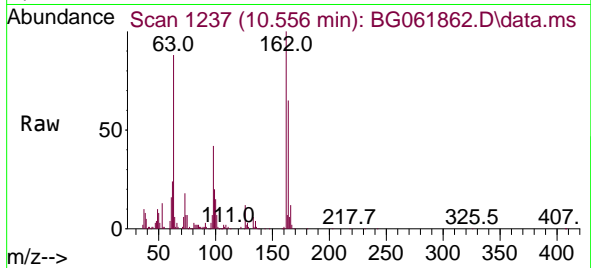


#29
 2,4-Dichlorophenol
 Concen: 37.725 ng/ul
 RT: 10.556 min Scan# 11
 Delta R.T. 0.000 min
 Lab File: BG061862.D
 Acq: 3 Jul 2024 13:14

Instrument :
 BNA_G
 ClientSampleId :
 A4DN0

Tgt Ion:162 Resp: 121659

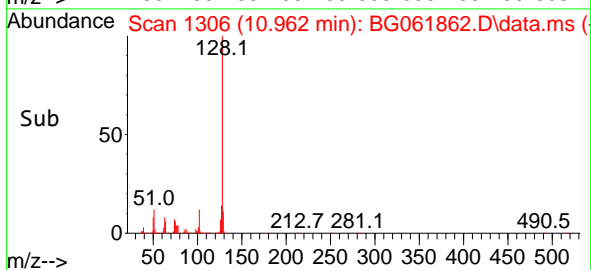
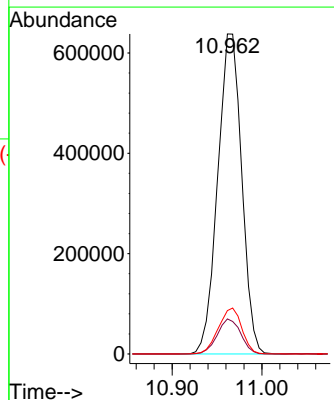
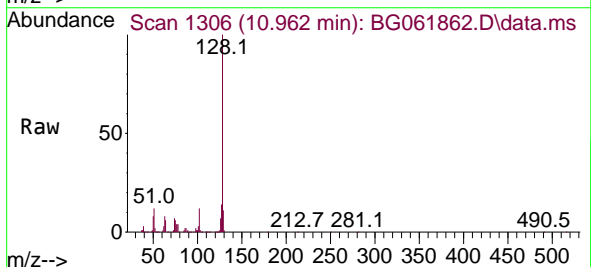
Ion	Ratio	Lower	Upper
162	100		
164	65.0	46.9	70.3
98	42.0	33.4	50.2

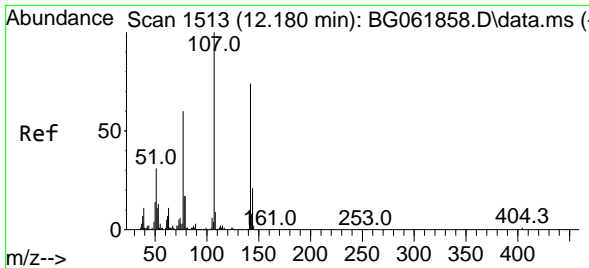


#30
 Naphthalene
 Concen: 105.047 ng/ul
 RT: 10.962 min Scan# 1306
 Delta R.T. 0.000 min
 Lab File: BG061862.D
 Acq: 3 Jul 2024 13:14

Tgt Ion:128 Resp: 1182522

Ion	Ratio	Lower	Upper
128	100		
129	10.9	7.7	11.5
127	13.5	9.6	14.4



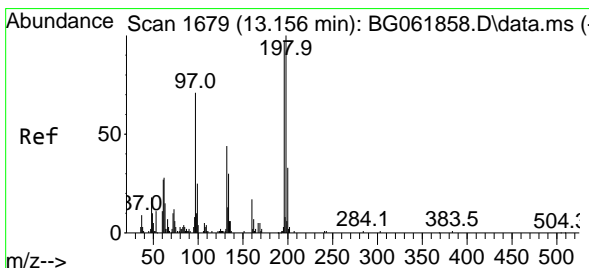
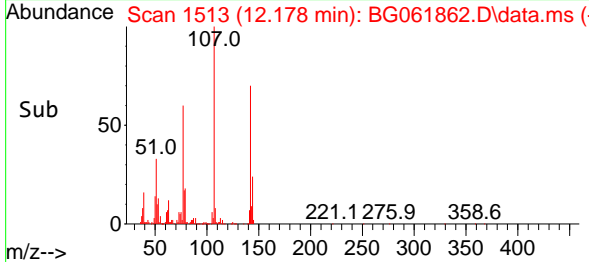
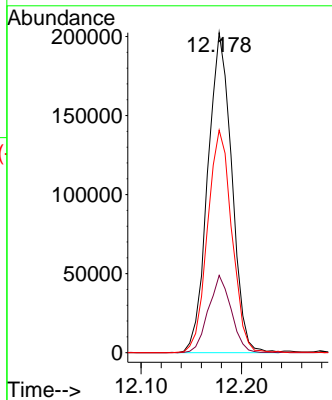
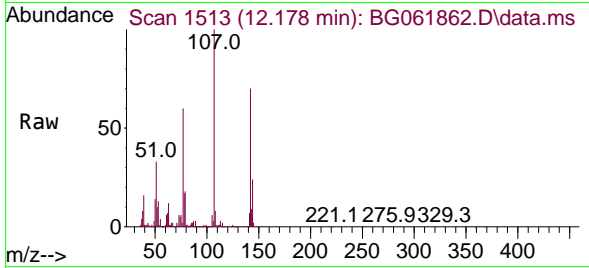


#35
 4-Chloro-3-methylphenol
 Concen: 78.126 ng/ul
 RT: 12.178 min Scan# 11
 Delta R.T. -0.006 min
 Lab File: BG061862.D
 Acq: 3 Jul 2024 13:14

Instrument :
 BNA_G
 ClientSampleId :
 A4DN0

Tgt Ion:107 Resp: 335549

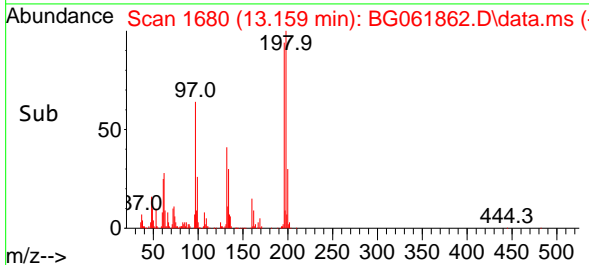
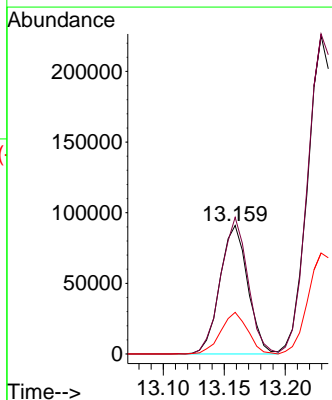
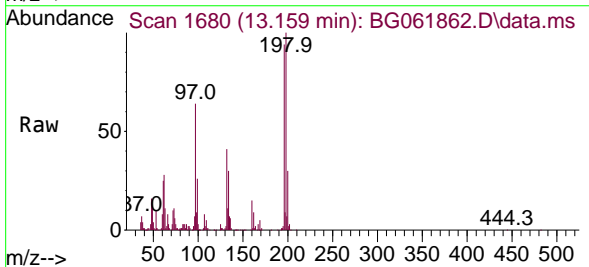
Ion	Ratio	Lower	Upper
107	100		
144	24.2	19.6	29.4
142	69.6	60.3	90.5

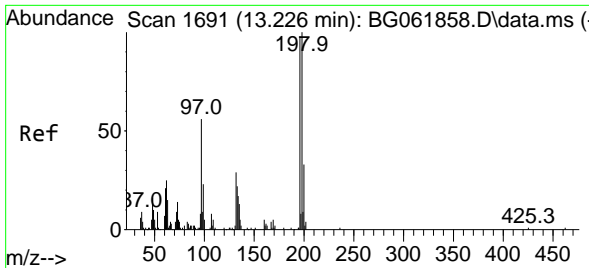


#41
 2,4,6-Trichlorophenol
 Concen: 49.123 ng/ul
 RT: 13.159 min Scan# 1680
 Delta R.T. 0.000 min
 Lab File: BG061862.D
 Acq: 3 Jul 2024 13:14

Tgt Ion:196 Resp: 145174

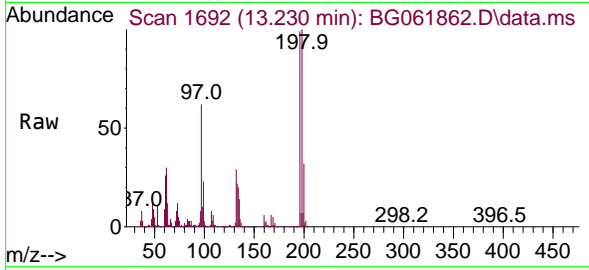
Ion	Ratio	Lower	Upper
196	100		
198	106.3	79.9	119.9
200	32.4	26.7	40.1



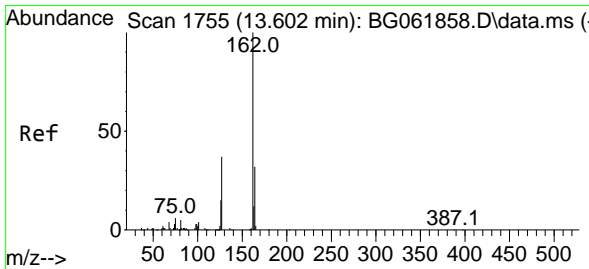
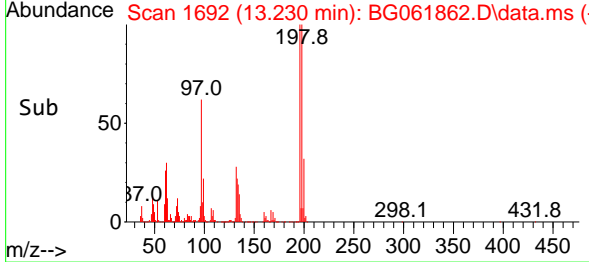
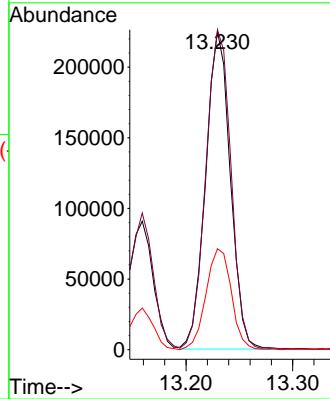


#42
 2,4,5-Trichlorophenol
 Concen: 111.147 ng/ul
 RT: 13.230 min Scan# 1
 Delta R.T. 0.000 min
 Lab File: BG061862.D
 Acq: 3 Jul 2024 13:14

Instrument :
 BNA_G
 ClientSampleId :
 A4DN0

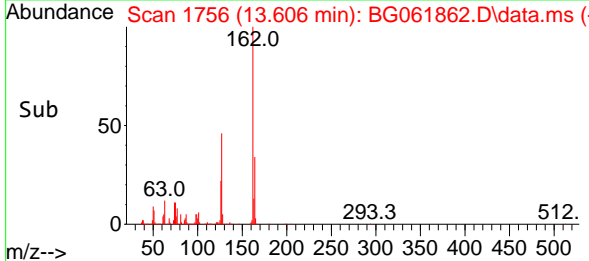
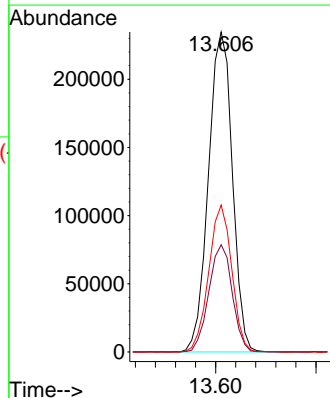
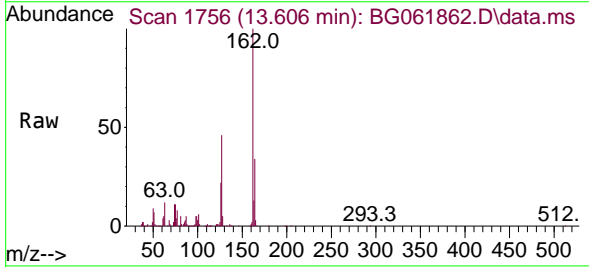


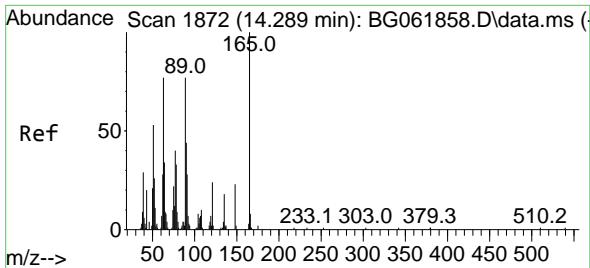
Tgt Ion:196 Resp: 360832
 Ion Ratio Lower Upper
 196 100
 198 100.5 72.5 108.7
 200 31.7 23.7 35.5



#44
 2-Chloronaphthalene
 Concen: 45.336 ng/ul
 RT: 13.606 min Scan# 1756
 Delta R.T. 0.006 min
 Lab File: BG061862.D
 Acq: 3 Jul 2024 13:14

Tgt Ion:162 Resp: 388434
 Ion Ratio Lower Upper
 162 100
 164 33.5 23.3 34.9
 127 45.9 33.2 49.8



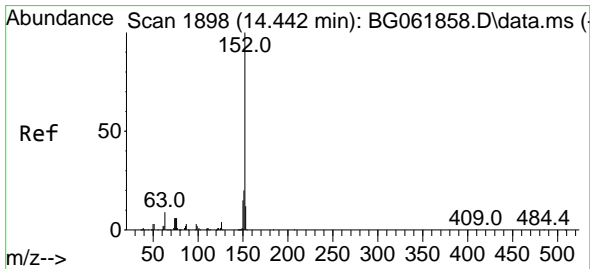
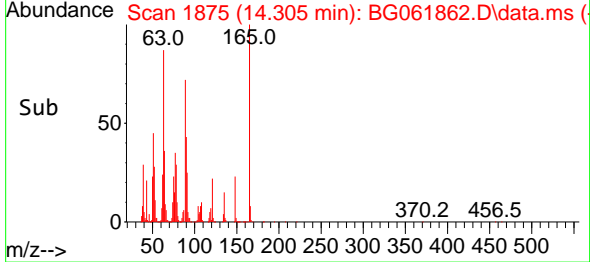
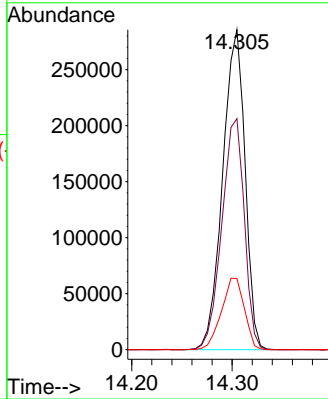
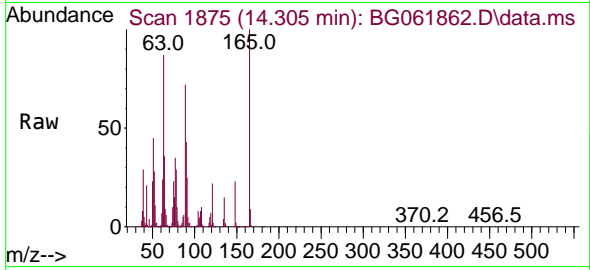


#48
 2,6-Dinitrotoluene
 Concen: 198.276 ng/ul
 RT: 14.305 min Scan# 11
 Delta R.T. 0.012 min
 Lab File: BG061862.D
 Acq: 3 Jul 2024 13:14

Instrument :
 BNA_G
 ClientSampleId :
 A4DN0

Tgt Ion:165 Resp: 440708

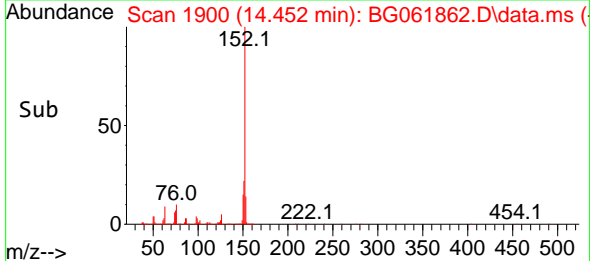
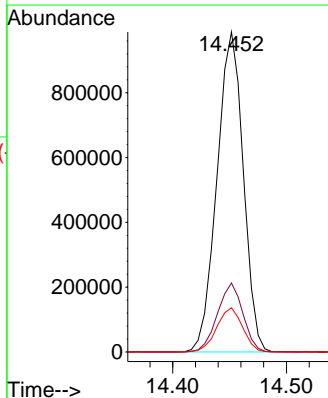
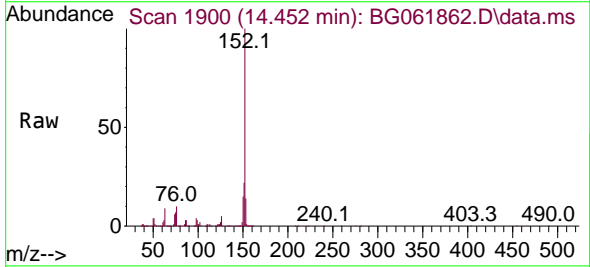
Ion	Ratio	Lower	Upper
165	100		
89	72.2	62.6	93.8
121	22.3	18.4	27.6

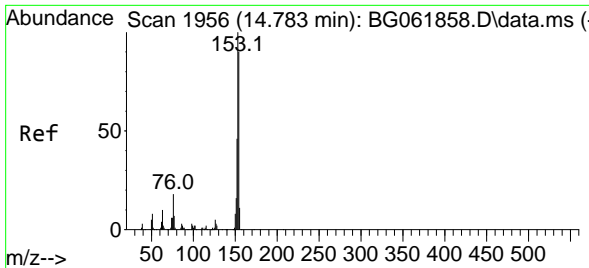


#50
 Acenaphthylene
 Concen: 113.394 ng/ul
 RT: 14.452 min Scan# 1900
 Delta R.T. 0.006 min
 Lab File: BG061862.D
 Acq: 3 Jul 2024 13:14

Tgt Ion:152 Resp: 1585201

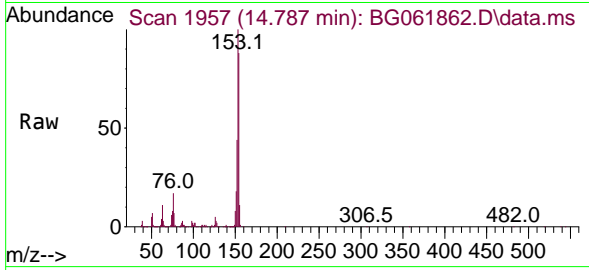
Ion	Ratio	Lower	Upper
152	100		
151	21.6	16.5	24.7
153	13.8	11.4	17.0



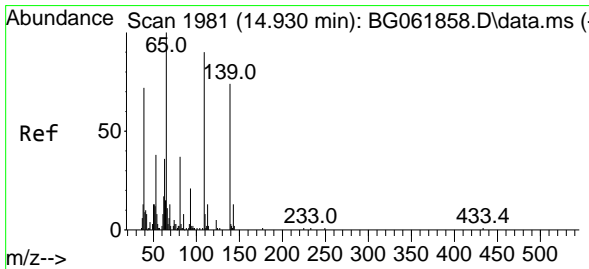
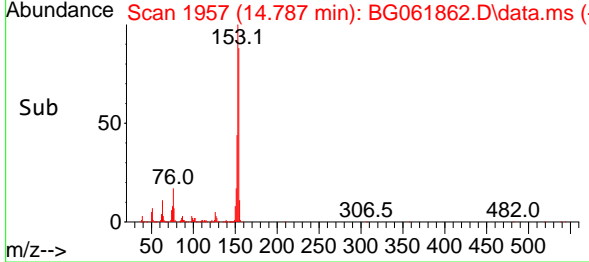
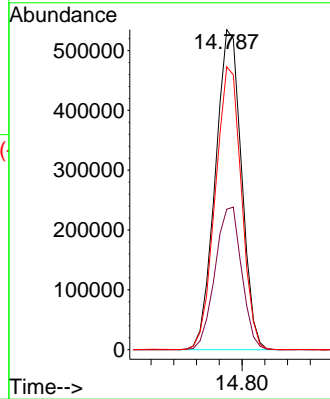


#52
 Acenaphthene
 Concen: 88.676 ng/ul
 RT: 14.787 min Scan# 1957
 Delta R.T. 0.000 min
 Lab File: BG061862.D
 Acq: 3 Jul 2024 13:14

Instrument :
 BNA_G
 ClientSampleId :
 A4DN0

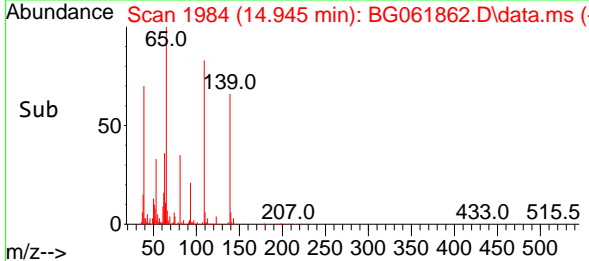
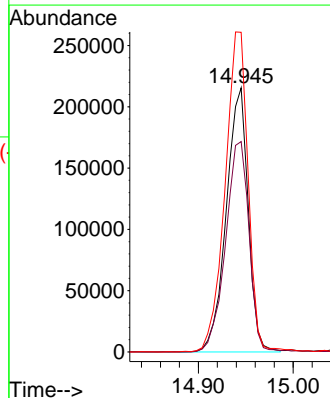
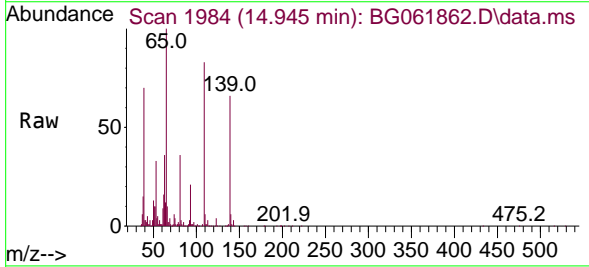


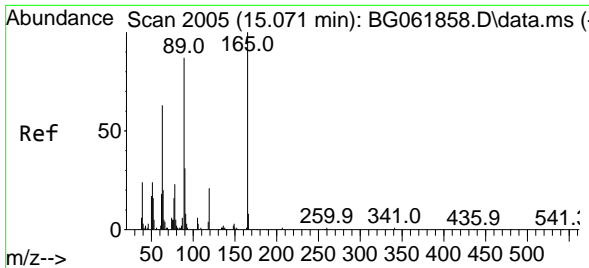
Tgt Ion:153 Resp: 855992
 Ion Ratio Lower Upper
 153 100
 152 43.9 37.2 55.8
 154 88.4 75.0 112.6



#55
 4-Nitrophenol
 Concen: 155.826 ng/ul
 RT: 14.945 min Scan# 1984
 Delta R.T. 0.018 min
 Lab File: BG061862.D
 Acq: 3 Jul 2024 13:14

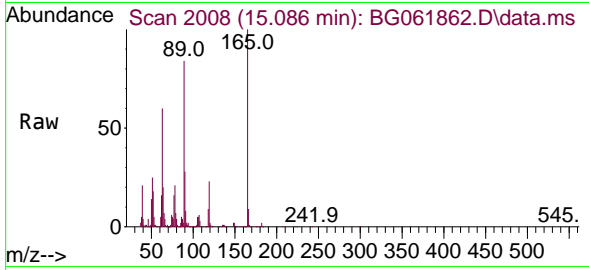
Tgt Ion:109 Resp: 345967
 Ion Ratio Lower Upper
 109 100
 139 79.7 67.4 101.2
 65 121.1 102.1 153.1



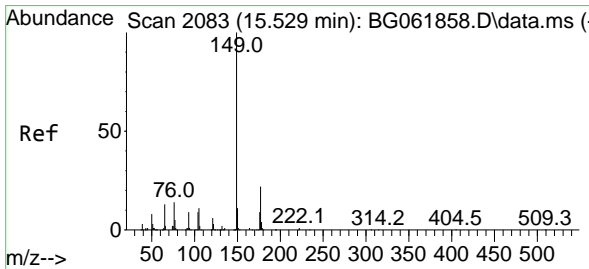
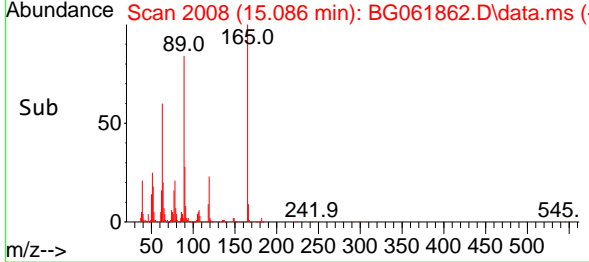
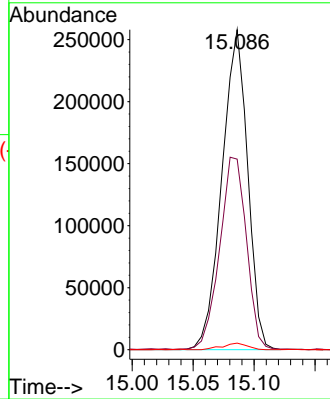


#57
 2,4-Dinitrotoluene
 Concen: 116.200 ng/ul
 RT: 15.086 min Scan# 2008
 Delta R.T. 0.006 min
 Lab File: BG061862.D
 Acq: 3 Jul 2024 13:14

Instrument :
 BNA_G
 ClientSampleId :
 A4DN0

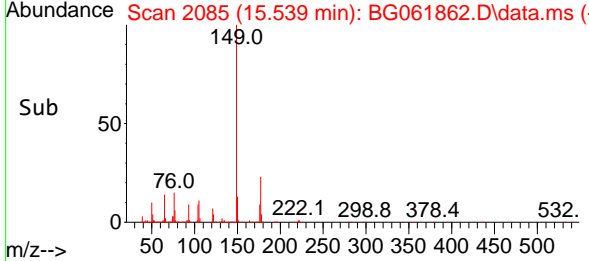
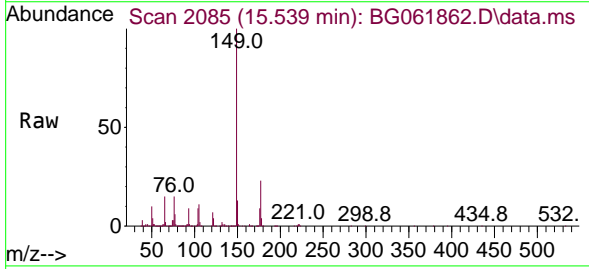
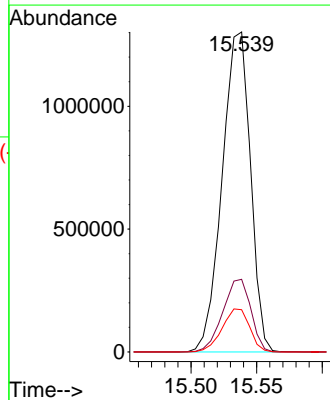


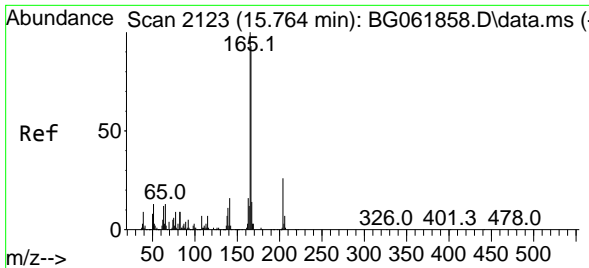
Tgt Ion:165 Resp: 378773
 Ion Ratio Lower Upper
 165 100
 63 59.6 44.9 67.3
 182 2.1 2.6 3.8#



#59
 Diethylphthalate
 Concen: 154.547 ng/ul
 RT: 15.539 min Scan# 2085
 Delta R.T. 0.012 min
 Lab File: BG061862.D
 Acq: 3 Jul 2024 13:14

Tgt Ion:149 Resp: 1951280
 Ion Ratio Lower Upper
 149 100
 177 22.7 16.3 24.5
 150 13.2 9.6 14.4



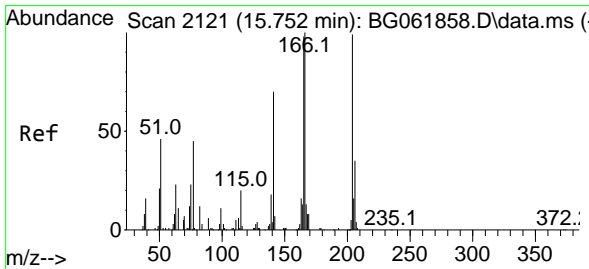
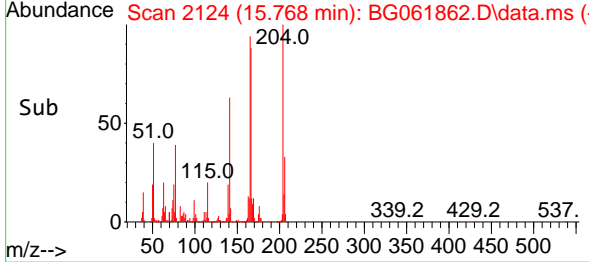
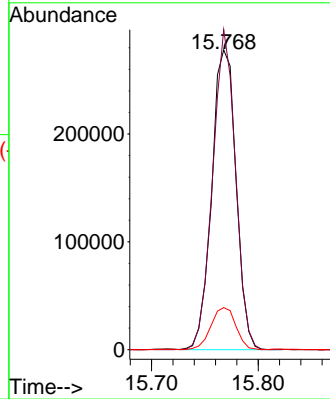
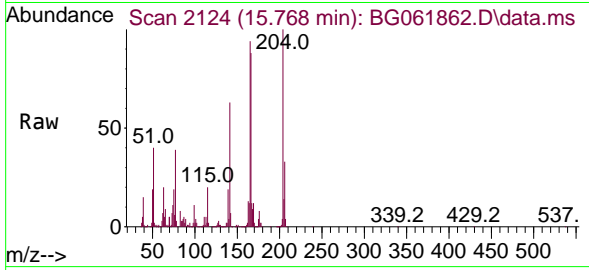


#61
 Fluorene
 Concen: 38.016 ng/ul
 RT: 15.768 min Scan# 2124
 Delta R.T. 0.000 min
 Lab File: BG061862.D
 Acq: 3 Jul 2024 13:14

Instrument :
 BNA_G
 ClientSampleId :
 A4DN0

Tgt Ion:166 Resp: 441082

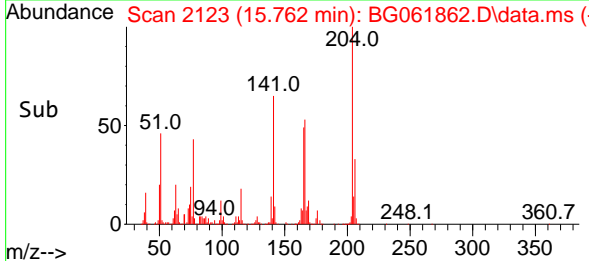
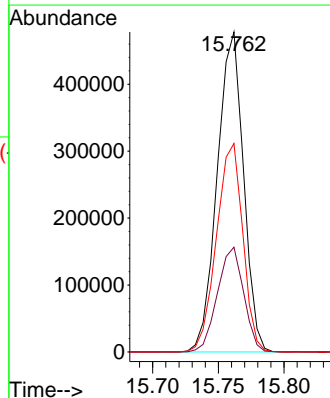
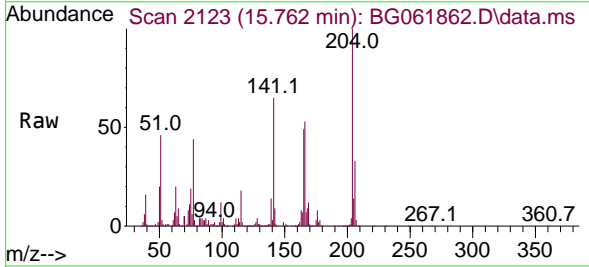
Ion	Ratio	Lower	Upper
166	100		
165	106.7	78.4	117.6
167	14.1	10.4	15.6

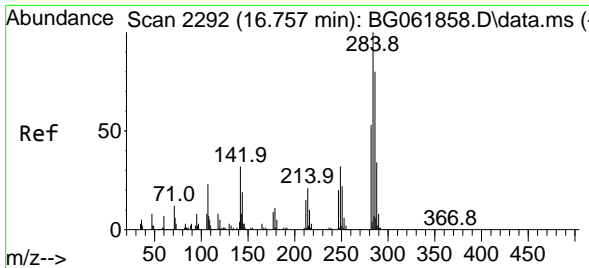


#62
 4-Chlorophenyl-phenylether
 Concen: 114.125 ng/ul
 RT: 15.762 min Scan# 2123
 Delta R.T. 0.006 min
 Lab File: BG061862.D
 Acq: 3 Jul 2024 13:14

Tgt Ion:204 Resp: 665109

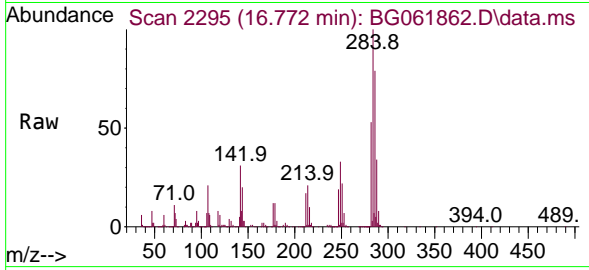
Ion	Ratio	Lower	Upper
204	100		
206	32.8	24.5	36.7
141	65.1	46.6	69.8



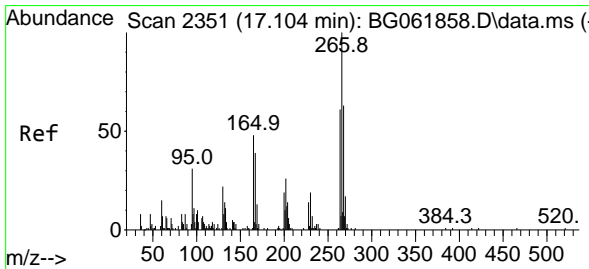
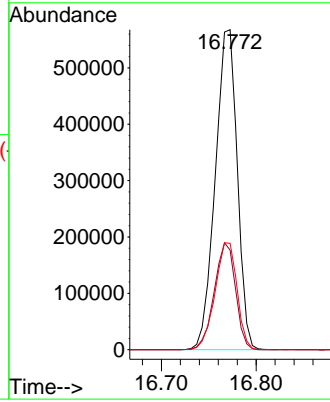
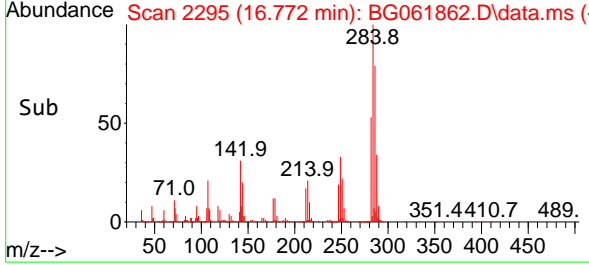


#69
 Hexachlorobenzene
 Concen: 209.538 ng/u1
 RT: 16.772 min Scan# 21
 Delta R.T. 0.012 min
 Lab File: BG061862.D
 Acq: 3 Jul 2024 13:14

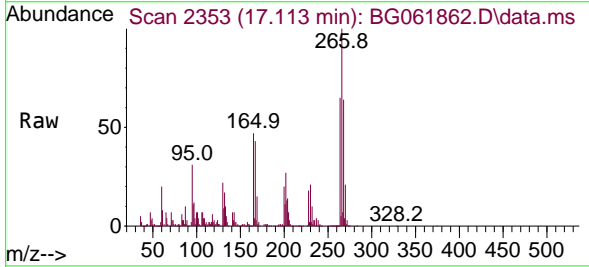
Instrument :
 BNA_G
 ClientSampleId :
 A4DN0



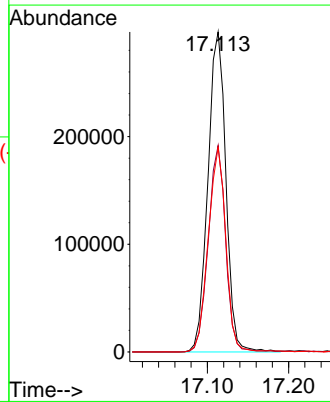
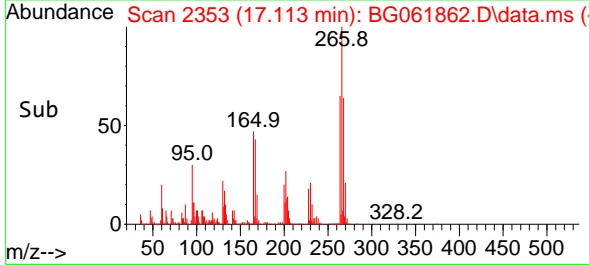
Tgt Ion:284 Resp: 915567
 Ion Ratio Lower Upper
 284 100
 142 31.1 26.4 39.6
 249 33.2 27.2 40.8

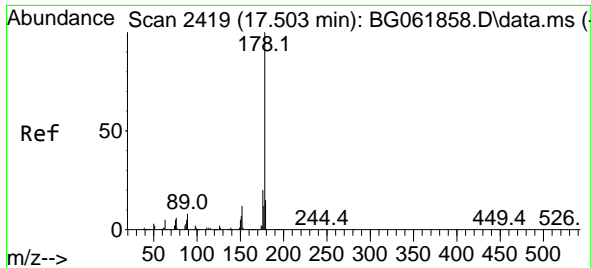


#71
 Pentachlorophenol
 Concen: 189.902 ng/u1
 RT: 17.113 min Scan# 2353
 Delta R.T. 0.006 min
 Lab File: BG061862.D
 Acq: 3 Jul 2024 13:14



Tgt Ion:266 Resp: 456097
 Ion Ratio Lower Upper
 266 100
 264 64.5 45.0 67.6
 268 64.0 50.5 75.7



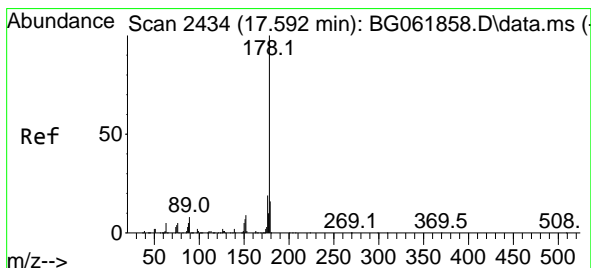
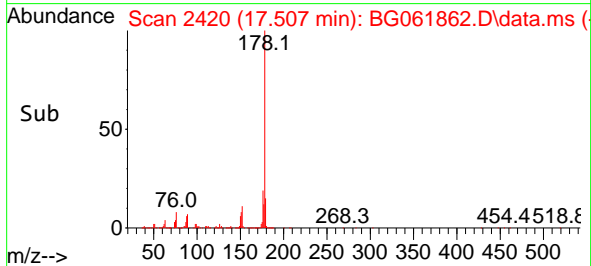
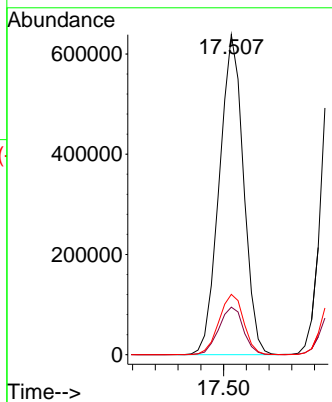
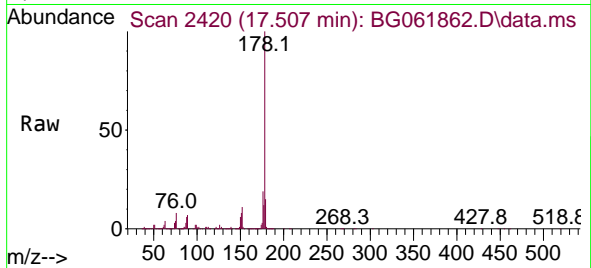


#72
 Phenanthrene
 Concen: 53.346 ng/u1
 RT: 17.507 min Scan# 2419
 Delta R.T. 0.000 min
 Lab File: BG061862.D
 Acq: 3 Jul 2024 13:14

Instrument : BNA_G
 ClientSampleId : A4DN0

Tgt Ion:178 Resp: 942153

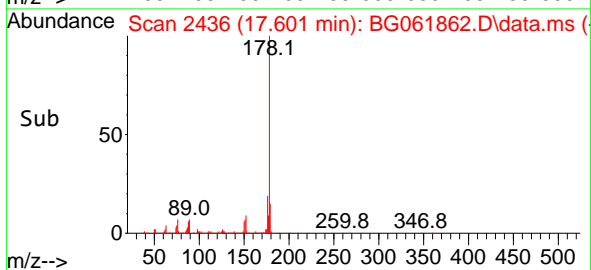
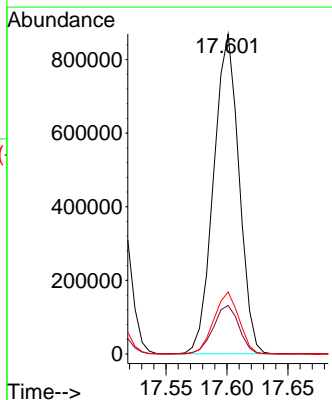
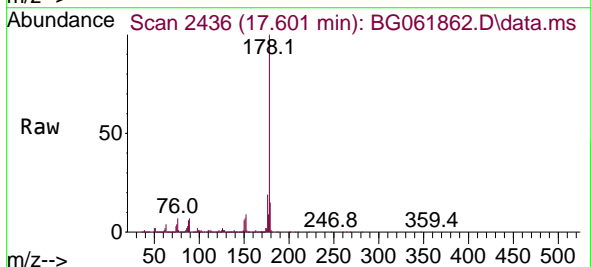
Ion	Ratio	Lower	Upper
178	100		
179	14.8	11.9	17.9
176	18.8	15.5	23.3

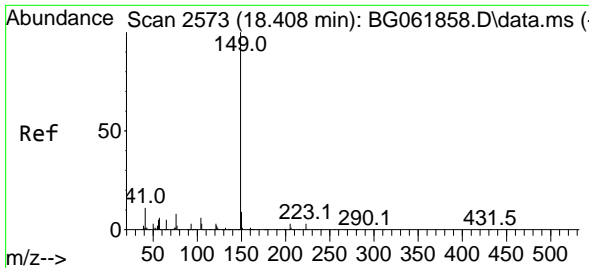


#74
 Anthracene
 Concen: 69.076 ng/u1
 RT: 17.601 min Scan# 2436
 Delta R.T. 0.006 min
 Lab File: BG061862.D
 Acq: 3 Jul 2024 13:14

Tgt Ion:178 Resp: 1260762

Ion	Ratio	Lower	Upper
178	100		
179	15.2	11.9	17.9
176	19.4	14.7	22.1



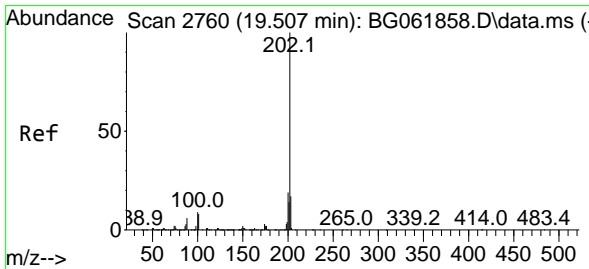
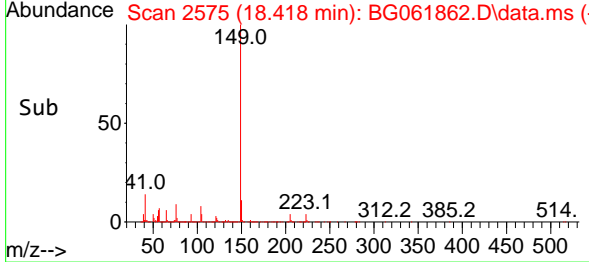
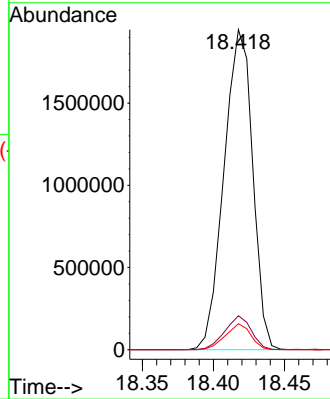
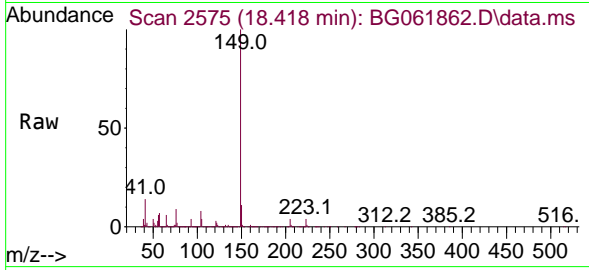


#78
 Di-n-butylphthalate
 Concen: 138.078 ng/ul
 RT: 18.418 min Scan# 21
 Delta R.T. 0.006 min
 Lab File: BG061862.D
 Acq: 3 Jul 2024 13:14

Instrument :
 BNA_G
 ClientSampleId :
 A4DN0

Tgt Ion:149 Resp: 2723042

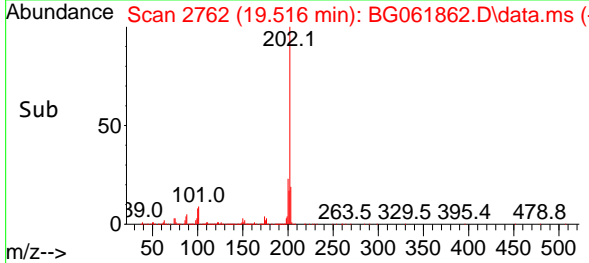
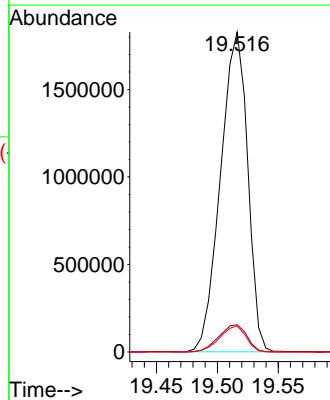
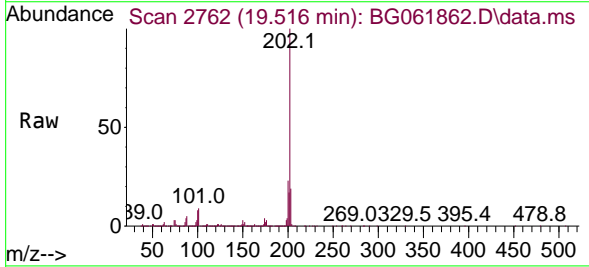
Ion	Ratio	Lower	Upper
149	100		
150	10.6	7.5	11.3
104	8.1	5.0	7.4#

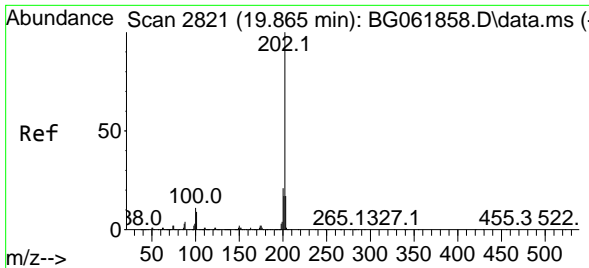


#80
 Fluoranthene
 Concen: 145.658 ng/ul
 RT: 19.516 min Scan# 2762
 Delta R.T. 0.012 min
 Lab File: BG061862.D
 Acq: 3 Jul 2024 13:14

Tgt Ion:202 Resp: 2826381

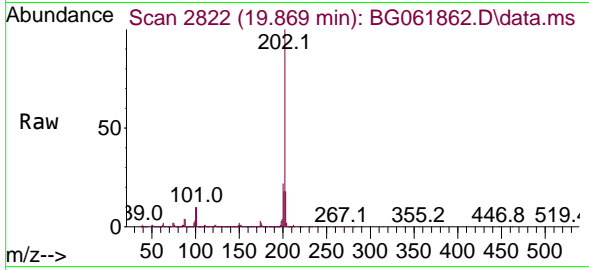
Ion	Ratio	Lower	Upper
202	100		
101	8.5	7.4	11.2
100	8.1	6.6	10.0



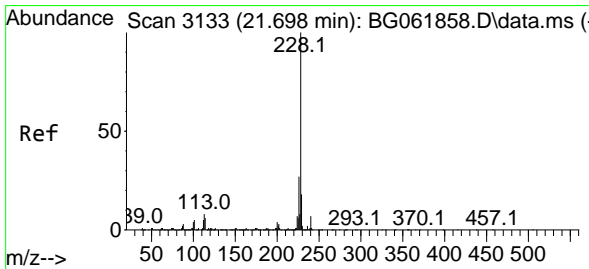
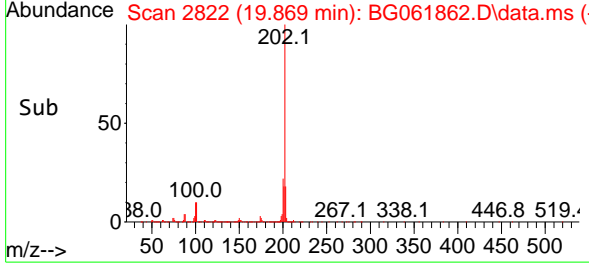
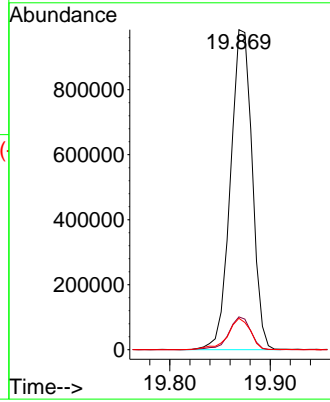


#82
 Pyrene
 Concen: 73.809 ng/u1
 RT: 19.869 min Scan# 21
 Delta R.T. 0.000 min
 Lab File: BG061862.D
 Acq: 3 Jul 2024 13:14

Instrument :
 BNA_G
 ClientSampleId :
 A4DN0

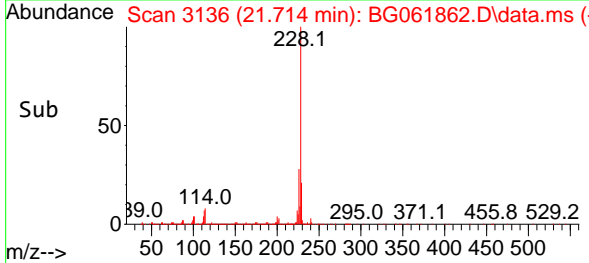
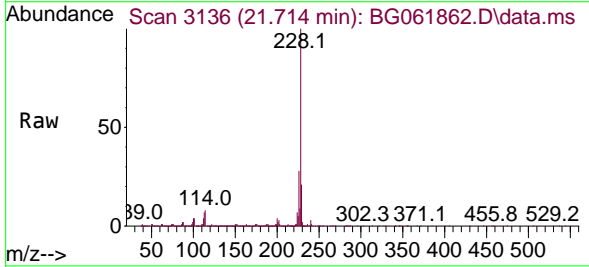
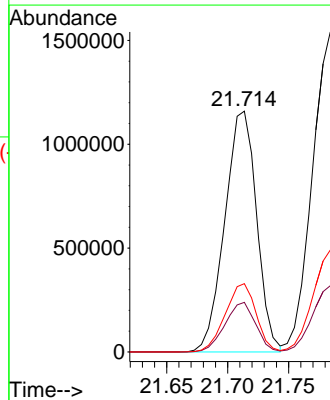


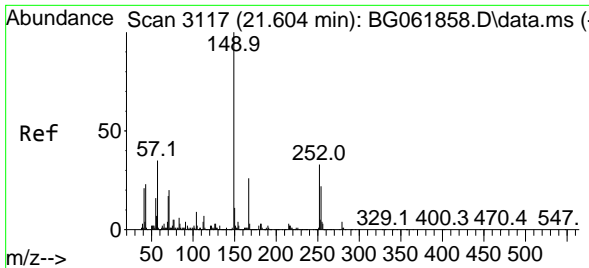
Tgt Ion:202 Resp: 1479432
 Ion Ratio Lower Upper
 202 100
 101 10.2 8.8 13.2
 100 9.8 7.6 11.4



#85
 Benzo(a)anthracene
 Concen: 104.549 ng/u1
 RT: 21.714 min Scan# 3136
 Delta R.T. 0.012 min
 Lab File: BG061862.D
 Acq: 3 Jul 2024 13:14

Tgt Ion:228 Resp: 2110138
 Ion Ratio Lower Upper
 228 100
 229 20.6 15.7 23.5
 226 28.4 21.7 32.5

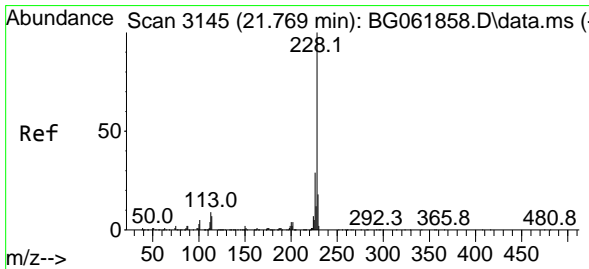
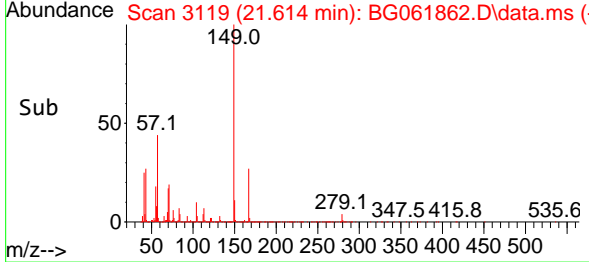
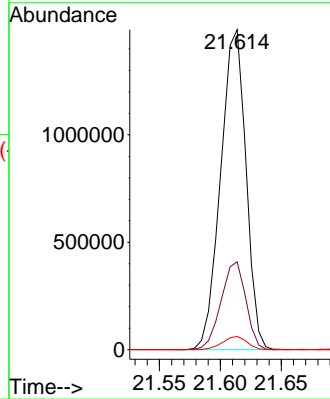
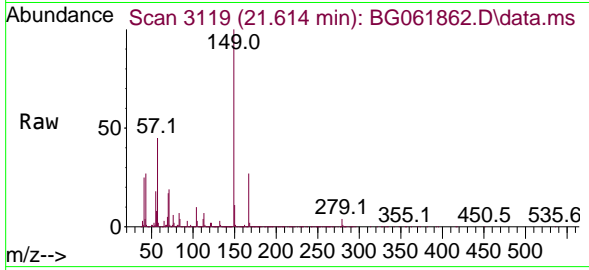




#86
 Bis(2-ethylhexyl)phthalate
 Concen: 178.382 ng/ul
 RT: 21.614 min Scan# 3119
 Delta R.T. 0.012 min
 Lab File: BG061862.D
 Acq: 3 Jul 2024 13:14

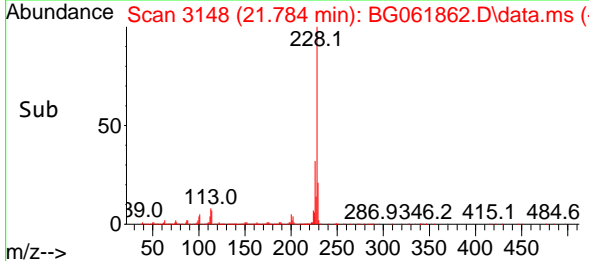
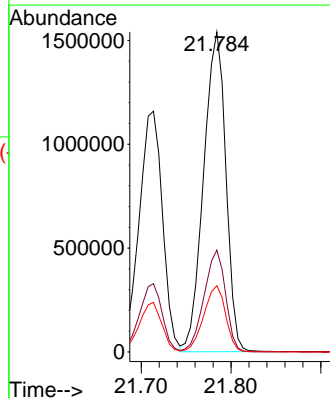
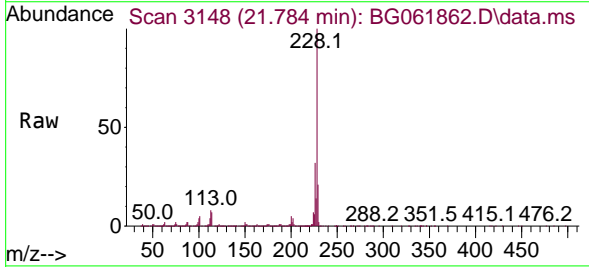
Instrument :
 BNA_G
 ClientSampleId :
 A4DN0

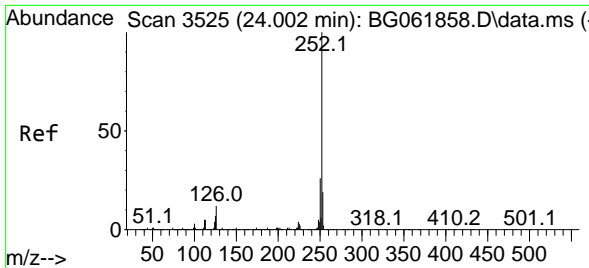
Tgt Ion:149 Resp: 2153249
 Ion Ratio Lower Upper
 149 100
 167 27.4 21.7 32.5
 279 4.2 2.8 4.2



#87
 Chrysene
 Concen: 139.854 ng/ul
 RT: 21.784 min Scan# 3148
 Delta R.T. 0.012 min
 Lab File: BG061862.D
 Acq: 3 Jul 2024 13:14

Tgt Ion:228 Resp: 2642472
 Ion Ratio Lower Upper
 228 100
 226 31.9 23.3 34.9
 229 20.7 15.5 23.3

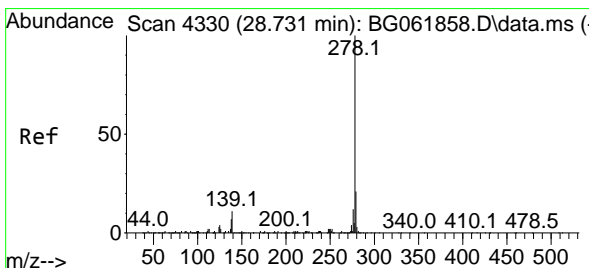
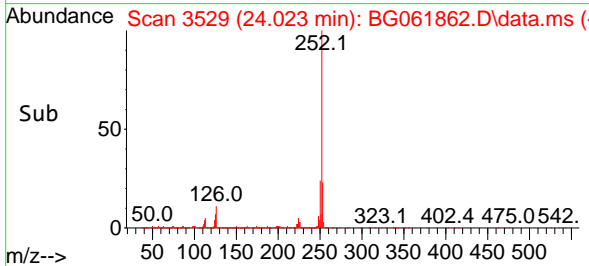
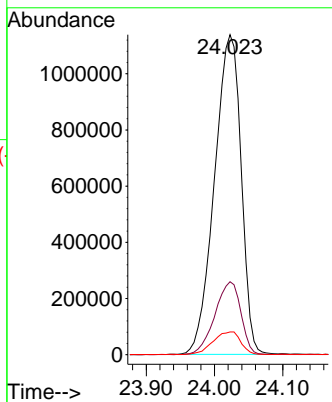
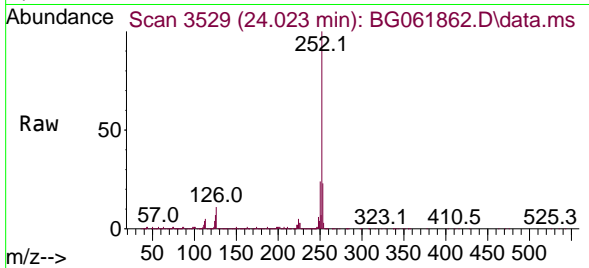




#91
 Benzo(k)fluoranthene
 Concen: 147.439 ng/ul
 RT: 24.023 min Scan# 31
 Delta R.T. 0.018 min
 Lab File: BG061862.D
 Acq: 3 Jul 2024 13:14

Instrument :
 BNA_G
 ClientSampleId :
 A4DN0

Tgt Ion:252 Resp: 3092338
 Ion Ratio Lower Upper
 252 100
 253 22.8 19.3 28.9
 125 7.1 6.3 9.5



#95
 Dibenzo(a,h)anthracene
 Concen: 104.584 ng/ul
 RT: 28.770 min Scan# 4337
 Delta R.T. 0.035 min
 Lab File: BG061862.D
 Acq: 3 Jul 2024 13:14

Tgt Ion:278 Resp: 2198425
 Ion Ratio Lower Upper
 278 100
 139 9.9 7.6 11.4
 279 23.4 18.8 28.2

