

Data Path : Z:\svoasrv\HPCHEM1\BNA\_G\Data\BG070921\  
 Data File : BG049238.D  
 Acq On : 9 Jul 2021 15:16  
 Operator : CG/JU  
 Sample : M2878-15  
 Misc :  
 ALS Vial : 9 Sample Multiplier: 1

**Instrument :**  
 BNA\_G  
**ClientSampleId :**  
 BGE07

**Manual Integrations**  
**APPROVED**  
 mohammad  
 7/12/2021 12:33:04 PM

Quant Time: Jul 09 15:51:42 2021  
 Quant Method : Z:\SVOASRV\HPCHEM1\BNA\_G\METHODS\SFAM-EPA-BG070921.M  
 Quant Title : SVOA CALIBRATION  
 QLast Update : Fri Jul 09 03:15:38 2021  
 Response via : Initial Calibration

Compound	R.T.	QIon	Response	Conc	Units	Dev(Min)
Internal Standards						
1) 1,4-Dichlorobenzene-d4	8.076	152	28411	20.000	ng/ul	0.00
20) Naphthalene-d8	10.897	136	114716	20.000	ng/ul	0.00
38) Acenaphthene-d10	14.722	164	84349	20.000	ng/ul	0.00
64) Phenanthrene-d10	17.471	188	201062	20.000	ng/ul	0.00
79) Chrysene-d12	21.755	240	215144	20.000	ng/ul	0.00
88) Perylene-d12	25.051	264	220537	20.000	ng/ul	0.00
System Monitoring Compounds						
3) 1,4-Dioxane-d8	3.458	96	1423m	2.356	ng/uL	-0.01
4) Pyridine-d5	3.893	84	11887	6.693	ng/ul	0.00
7) Phenol-d5	7.225	99	34483	13.953	ng/ul	0.00
9) Bis-(2-Chloroethyl)eth...	7.395	67	22714	15.847	ng/ul	0.00
11) 2-Chlorophenol-d4	7.606	132	28775	15.754	ng/ul	0.00
15) 4-Methylphenol-d8	8.782	113	29547	14.922	ng/ul	0.00
21) Nitrobenzene-d5	9.240	128	15760	17.903	ng/ul	0.00
24) 2-Nitrophenol-d4	9.968	143	17671	17.487	ng/ul	0.00
28) 2,4-Dichlorophenol-d3	10.515	165	29903	15.165	ng/ul	0.00
31) 4-Chloroaniline-d4	11.032	131	38024	14.798	ng/ul	0.00
46) Dimethylphthalate-d6	14.116	166	123281	19.004	ng/ul	0.00
49) Acenaphthylene-d8	14.416	160	127755	16.785	ng/ul	0.00
54) 4-Nitrophenol-d4	14.916	143	13474	12.549	ng/ul	0.00
60) Fluorene-d10	15.715	176	98845	17.997	ng/ul	0.00
65) 4,6-Dinitro-2-methylph...	15.826	200	17731	13.874	ng/ul	0.00
73) Anthracene-d10	17.571	188	168604	18.418	ng/ul	0.00
81) Pyrene-d10	19.857	212	182718	16.570	ng/ul	0.00
92) Benzo(a)pyrene-d12	24.822	264	150809	13.155	ng/ul	0.00
Target Compounds						
80) Fluoranthene	19.522	202	16982	1.324	ng/ul#	94

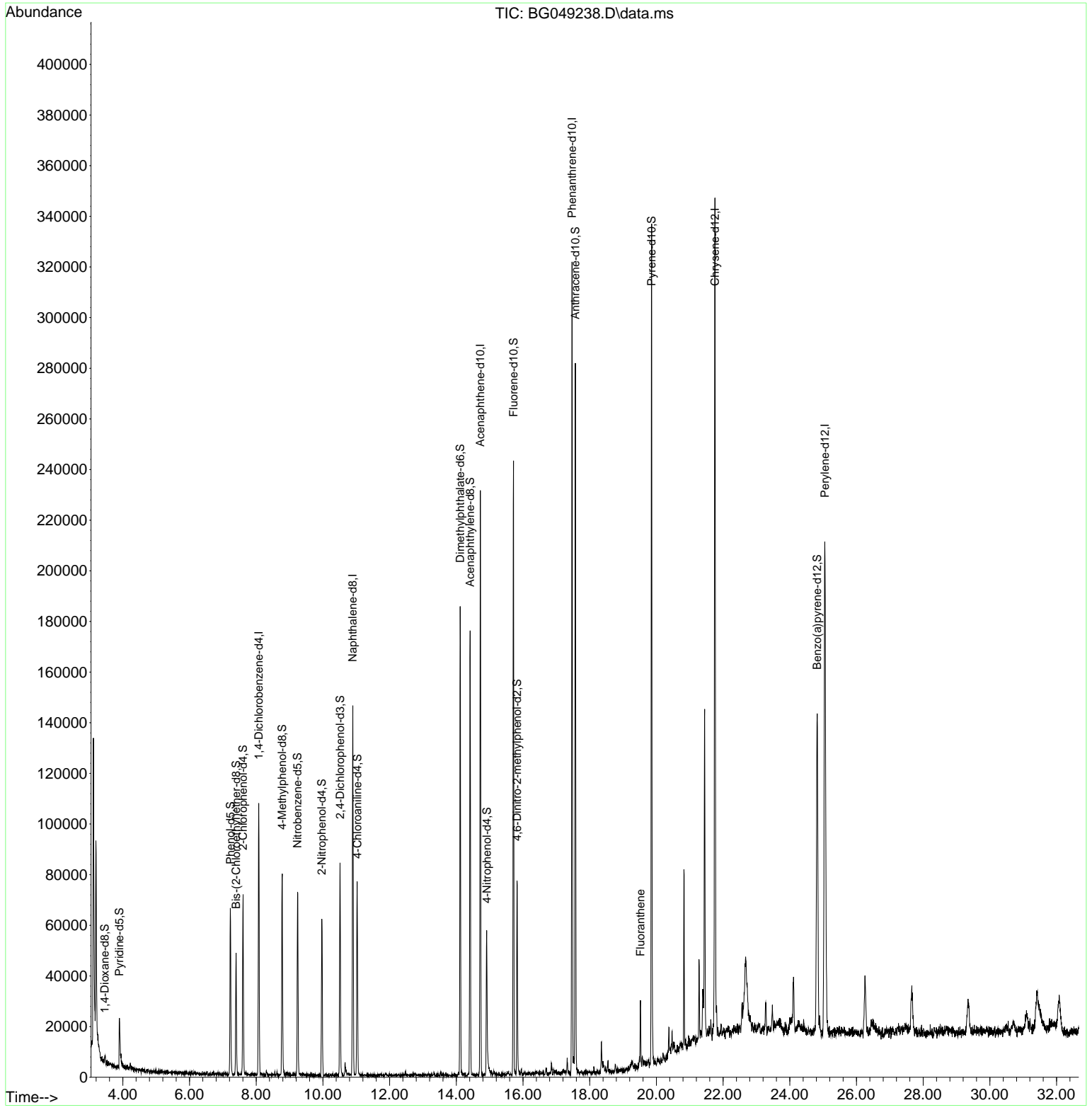
(#) = qualifier out of range (m) = manual integration (+) = signals summed

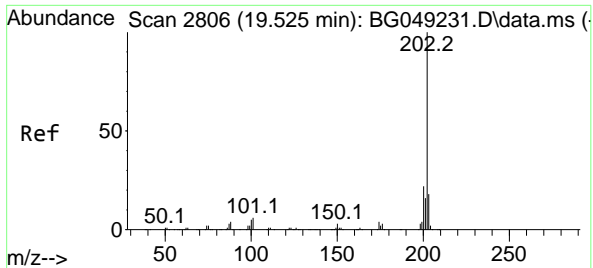
Data Path : Z:\svoasrv\HPCHEM1\BNA\_G\Data\BG070921\  
 Data File : BG049238.D  
 Acq On : 9 Jul 2021 15:16  
 Operator : CG/JU  
 Sample : M2878-15  
 Misc :  
 ALS Vial : 9 Sample Multiplier: 1

Instrument :  
 BNA\_G  
 ClientSampled :  
 BGE07

Manual Integrations  
**APPROVED**  
 mohammad  
 7/12/2021 12:33:04 PM

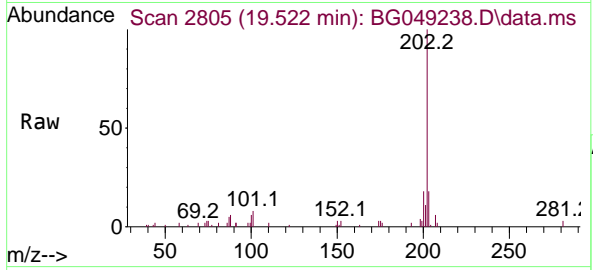
Quant Time: Jul 09 15:51:42 2021  
 Quant Method : Z:\SVOASRV\HPCHEM1\BNA\_G\METHODS\SFAM-EPA-BG070921.M  
 Quant Title : SVOA CALIBRATION  
 QLast Update : Fri Jul 09 03:15:38 2021  
 Response via : Initial Calibration





#80  
 Fluoranthene  
 Concen: 1.324 ng/ul  
 RT: 19.522 min Scan# 2805  
 Delta R.T. 0.000 min  
 Lab File: BG049238.D  
 Acq: 9 Jul 2021 15:16

**Instrument :**  
 BNA\_G  
**ClientSampled :**  
 BGE07



Tgt Ion: 202 Resp: 16982

Ion	Ratio	Lower	Upper
202	100		
101	8.5	4.6	6.8#
100	5.9	4.0	6.0

**Manual Integrations**  
**APPROVED**  
 mohammad  
 7/12/2021 12:33:04 PM

