

Data Path : Z:\svoasrv\HPCHEM1\BNA_G\Data\BG071123\
 Data File : BG058165.D
 Acq On : 11 Jul 2023 19:04
 Operator : CG/JU
 Sample : PB153960BL
 Misc :
 ALS Vial : 14 Sample Multiplier: 1

Instrument :
 BNA_G
 ClientSampleId :
 SBLK960

Integration Parameters: LSCINT.P
 Integrator: RTE
 Smoothing : OFF
 Sampling : 1
 Start Thrs : 0.2
 Stop Thrs : 0
 Filtering: 5
 Min Area: 0.1 % of largest Peak
 Max Peaks: 100
 Peak Location: TOP

If leading or trailing edge < 100 prefer < Baseline drop else tangent >
 Peak separation: 5

Method : Z:\svoasrv\HPCHEM1\BNA_G\Methods\SFAM-EPA-BG070123.MA.M
 Title : SVOA CALIBRATION

Signal : TIC: BG058165.D\data.ms

peak #	R.T. min	first scan	max scan	last scan	PK TY	peak height	corr. area	corr. % max.	% of total
1	3.140	6	9	19	rVB	31879	47999	3.13%	0.301%
2	3.404	50	54	59	rVB	12622	17813	1.16%	0.112%
3	3.816	119	124	138	rBV	191557	323486	21.12%	2.026%
4	4.156	178	182	185	rBV4	3323	4865	0.32%	0.030%
5	5.138	347	349	354	rVB3	1264	1727	0.11%	0.011%
6	6.148	517	521	524	rBV3	1216	1603	0.10%	0.010%
7	7.135	682	689	699	rBV	223335	390651	25.50%	2.447%
8	7.294	707	716	727	rBV	177735	298157	19.47%	1.868%
9	7.505	745	752	760	rBV	214579	364108	23.77%	2.281%
10	7.970	825	831	842	rVB	168718	290623	18.97%	1.820%
11	8.675	944	951	962	rBV	276019	486911	31.79%	3.050%
12	9.133	1020	1029	1036	rBV	220310	388269	25.35%	2.432%
13	9.856	1145	1152	1163	rBV	180806	319241	20.84%	2.000%
14	10.396	1237	1244	1259	rBV	275395	493797	32.24%	3.093%
15	10.778	1301	1309	1321	rVB	256769	467439	30.52%	2.928%
16	10.907	1324	1331	1344	rBV	279120	516677	33.73%	3.236%
17	12.359	1573	1578	1586	rVB2	3874	6496	0.42%	0.041%
18	13.487	1764	1770	1774	rBV5	3554	5834	0.38%	0.037%
19	13.998	1851	1857	1869	rBV	480887	729185	47.61%	4.567%
20	14.297	1900	1908	1924	rBV	577193	933473	60.94%	5.847%
21	14.603	1952	1960	1972	rBV	425144	686402	44.81%	4.299%
22	14.797	1987	1993	2005	rBV	170924	325547	21.25%	2.039%
23	14.891	2008	2009	2014	rVV4	4693	7200	0.47%	0.045%
24	14.956	2018	2020	2026	rVB5	2118	3121	0.20%	0.020%
25	15.590	2121	2128	2142	rBV	779437	1171087	76.46%	7.335%
26	15.708	2142	2148	2162	rVV	190957	290246	18.95%	1.818%
27	15.825	2165	2168	2175	rVB4	3313	4649	0.30%	0.029%
28	17.341	2420	2426	2436	rBV	565346	850038	55.50%	5.324%
29	17.441	2436	2443	2455	rBV	845415	1257522	82.10%	7.877%
30	19.292	2754	2758	2763	rVB4	13358	18254	1.19%	0.114%
31	19.362	2763	2770	2774	rBV2	8902	13845	0.90%	0.087%
32	19.439	2781	2783	2788	rBV5	1121	1632	0.11%	0.010%
33	19.632	2815	2816	2819	rVB2	2194	1912	0.12%	0.012%
34	19.726	2825	2832	2843	rBV	1017152	1458851	95.24%	9.138%
35	19.885	2857	2859	2862	rBV2	2068	2648	0.17%	0.017%
36	19.926	2862	2866	2867	rVV4	2723	2998	0.20%	0.019%

Data Path : Z:\svoasrv\HPCHEM1\BNA_G\Data\BG071123\
 Data File : BG058165.D
 Acq On : 11 Jul 2023 19:04
 Operator : CG/JU
 Sample : PB153960BL
 Misc :
 ALS Vial : 14 Sample Multiplier: 1

Instrument :
 BNA_G
 ClientSampleId :
 SBLK960

Integration Parameters: LSCINT.P

Integrator: RTE
 Smoothing : OFF Filtering: 5
 Sampling : 1 Min Area: 0.1 % of largest Peak
 Start Thrs: 0.2 Max Peaks: 100
 Stop Thrs : 0 Peak Location: TOP

If leading or trailing edge < 100 prefer < Baseline drop else tangent >
 Peak separation: 5

Method : Z:\svoasrv\HPCHEM1\BNA_G\Methods\SFAM-EPA-BG070123.MA.M
 Title : SVOA CALIBRATION

37	20.490	2960	2962	2964	rVV3	2273	1748	0.11%	0.011%
38	20.561	2971	2974	2977	rBV5	2555	3934	0.26%	0.025%
39	21.601	3144	3151	3164	rBV	531227	899797	58.74%	5.636%
40	22.094	3234	3235	3239	rBV4	3123	3594	0.23%	0.023%
41	22.370	3280	3282	3286	rVB5	4979	6341	0.41%	0.040%
42	22.611	3321	3323	3324	rBV2	3174	3142	0.21%	0.020%
43	23.058	3395	3399	3407	rVB4	14640	32068	2.09%	0.201%
44	23.851	3528	3534	3540	rBV3	17367	36175	2.36%	0.227%
45	23.992	3556	3558	3561	rVB3	3592	3344	0.22%	0.021%
46	24.574	3646	3657	3669	rBV	543562	1531728	100.00%	9.594%
47	24.791	3684	3694	3710	rBV	344304	1026701	67.03%	6.431%
48	25.543	3820	3822	3823	rBV2	3091	2087	0.14%	0.013%
49	25.802	3864	3866	3867	rBV2	3317	1834	0.12%	0.011%
50	25.896	3875	3882	3890	rBV4	21951	62032	4.05%	0.389%
51	25.966	3892	3894	3897	rBV4	3053	3744	0.24%	0.023%
52	26.577	3996	3998	4000	rVB3	3084	2337	0.15%	0.015%
53	27.229	4100	4109	4123	rVB4	26317	86053	5.62%	0.539%
54	27.370	4131	4133	4137	rVB5	3443	3525	0.23%	0.022%
55	28.087	4253	4255	4256	rBV	3216	2451	0.16%	0.015%
56	28.851	4378	4385	4399	rVB9	15871	59264	3.87%	0.371%
57	30.426	4651	4653	4656	rBV3	2365	1701	0.11%	0.011%
58	31.113	4768	4770	4772	rBV3	3308	2372	0.15%	0.015%
59	31.460	4827	4829	4830	rBV2	2675	1740	0.11%	0.011%
60	32.288	4967	4970	4971	rBV3	2723	2934	0.19%	0.018%

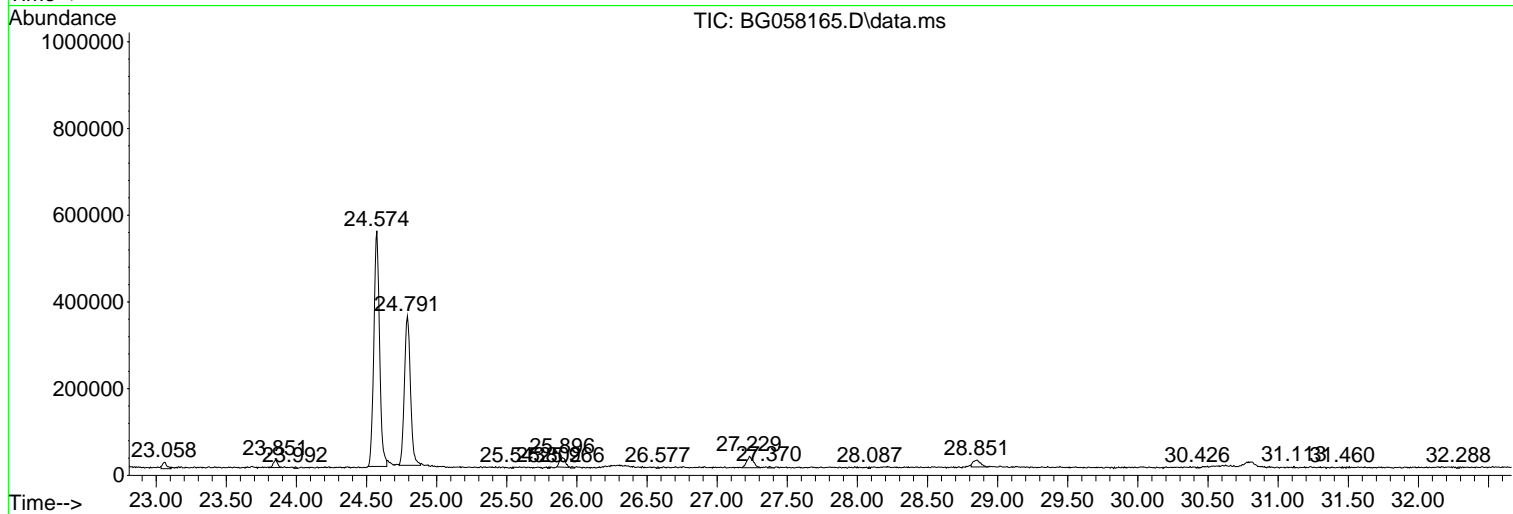
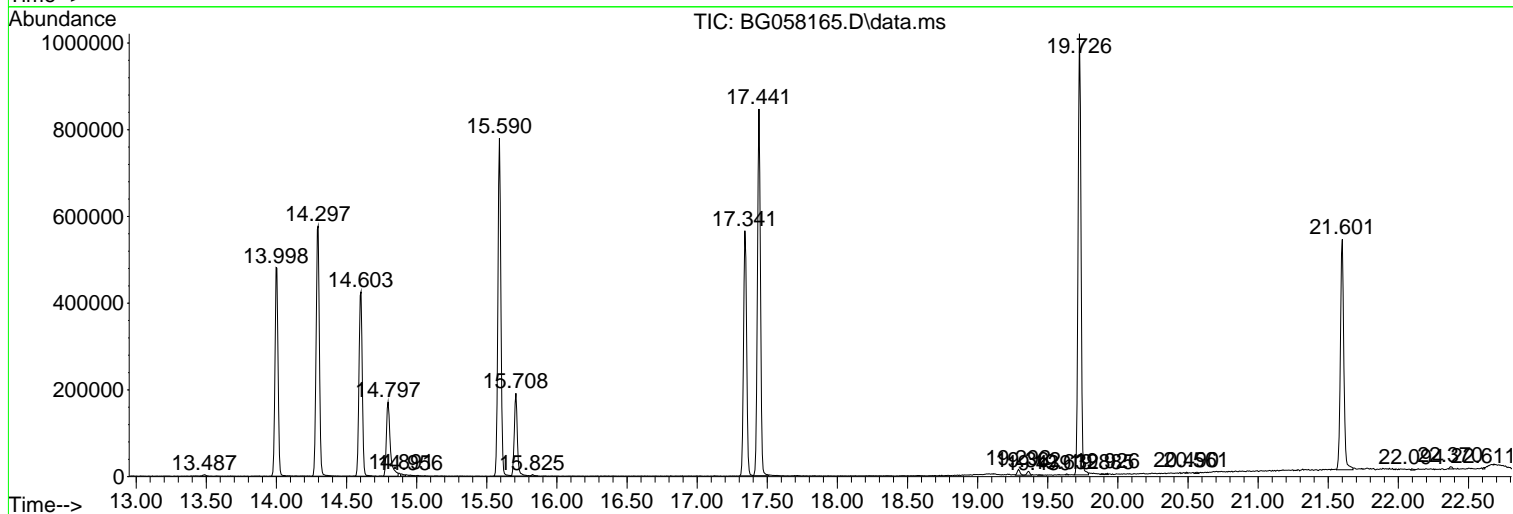
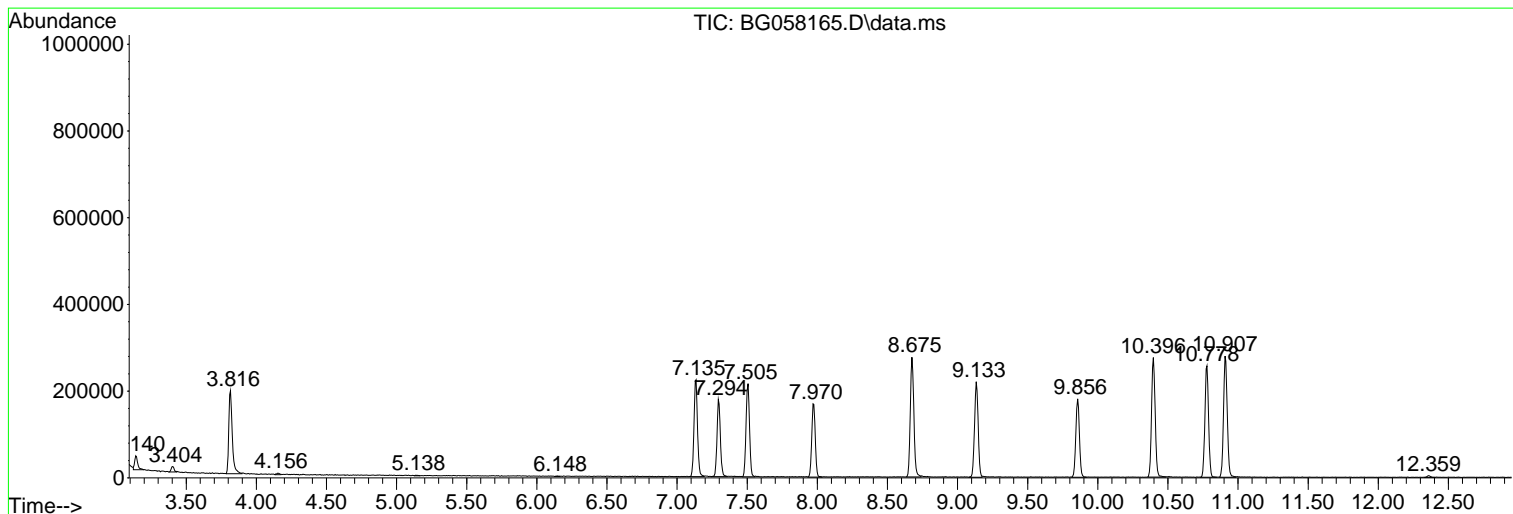
Sum of corrected areas: 15964952

Data Path : Z:\svoasrv\HPCHEM1\BNA_G\Data\BG071123\
 Data File : BG058165.D
 Acq On : 11 Jul 2023 19:04
 Operator : CG/JU
 Sample : PB153960BL
 Misc :
 ALS Vial : 14 Sample Multiplier: 1

Instrument :
 BNA_G
 ClientSampleId :
 SBLK960

Quant Method : Z:\svoasrv\HPCHEM1\BNA_G\Methods\SFAM-EPA-BG070123.MA.M
 Quant Title : SVOA CALIBRATION

TIC Library : C:\DATABASE\NIST20.L
 TIC Integration Parameters: LSCINT.P



Data Path : Z:\svoasrv\HPCHEM1\BNA_G\Data\BG071123\
 Data File : BG058165.D
 Acq On : 11 Jul 2023 19:04
 Operator : CG/JU
 Sample : PB153960BL
 Misc :
 ALS Vial : 14 Sample Multiplier: 1

Instrument :
 BNA_G
 ClientSampleId :
 SBLK960

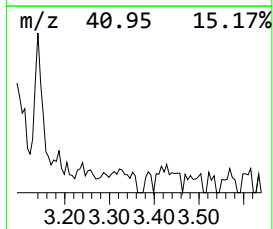
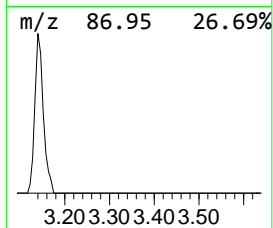
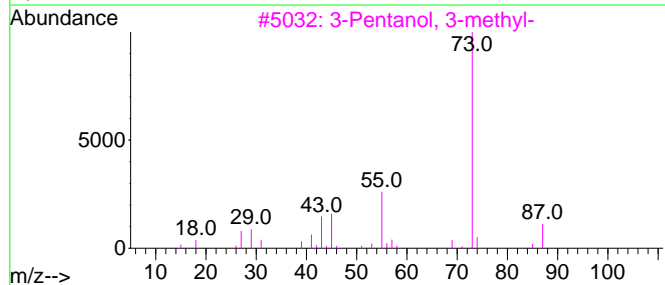
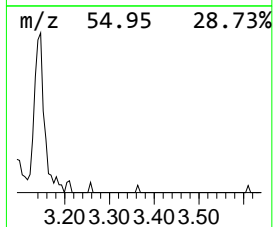
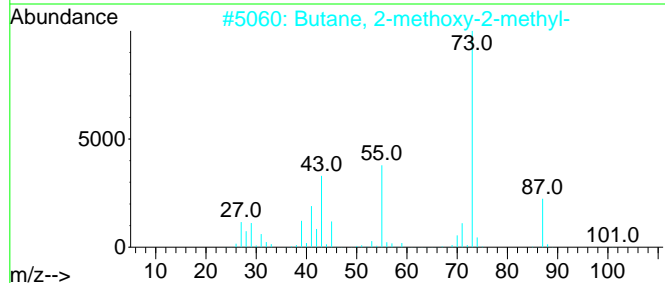
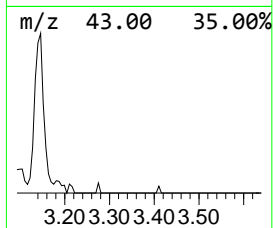
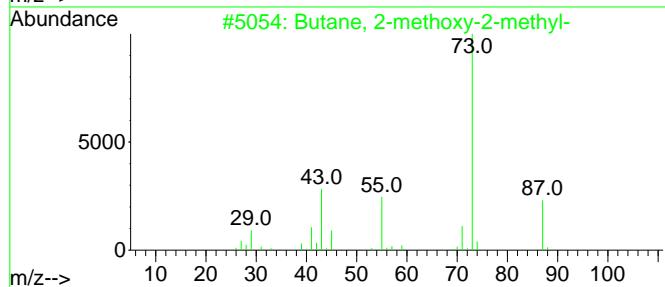
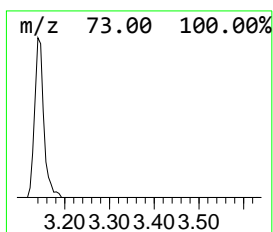
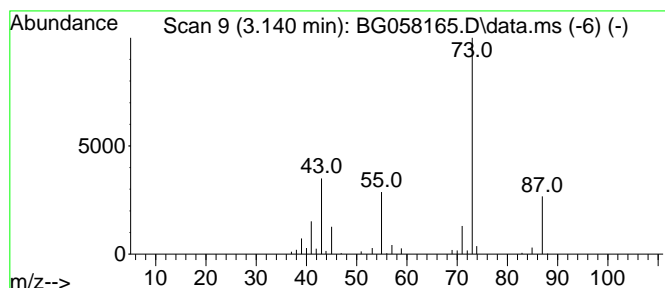
Quant Method : Z:\svoasrv\HPCHEM1\BNA_G\Methods\SFAM-EPA-BG070123.MA.M
 Quant Title : SVOA CALIBRATION

TIC Library : C:\DATABASE\NIST20.L
 TIC Integration Parameters: LSCINT.P

 Peak Number 1 Butane, 2-methoxy-2-methyl- Concentration Rank 1

R.T.	EstConc	Area	Relative to ISTD	R.T.
3.140	3.30 ng/ul	47999	1,4-Dichlorobenzene-d4	7.975

Hit#	of	5	Tentative ID	MW	MolForm	CAS#	Qual
1			Butane, 2-methoxy-2-methyl-	102	C6H14O	000994-05-8	78
2			Butane, 2-methoxy-2-methyl-	102	C6H14O	000994-05-8	40
3			3-Pentanol, 3-methyl-	102	C6H14O	000077-74-7	28
4			Octanal, 7-methoxy-3,7-dimethyl-	186	C11H22O2	003613-30-7	17
5			3-Hexanol, 2-methyl-	116	C7H16O	000617-29-8	17



Data Path : Z:\svoasrv\HPCHEM1\BNA_G\Data\BG071123\
Data File : BG058165.D
Acq On : 11 Jul 2023 19:04
Operator : CG/JU
Sample : PB153960BL
Misc :
ALS Vial : 14 Sample Multiplier: 1

Instrument :
BNA_G
ClientSampleId :
SBLK960

Quant Method : Z:\svoasrv\HPCHEM1\BNA_G\Methods\SFAM-EPA-BG070123.MA.M
Quant Title : SVOA CALIBRATION

TIC Library : C:\DATABASE\NIST20.L
TIC Integration Parameters: LSCINT.P

TIC Top Hit name	RT	EstConc	Units	Response	--Internal Standard--			
					#	RT	Resp	Conc
Butane, 2-metho...	3.140	3.3	ng/u1	47999	1	7.975	290623	20.0