

Data Path : Z:\svoasrv\HPCHEM1\BNA\_P\Data\BP071323\  
 Data File : BP016210.D  
 Acq On : 13 Jul 2023 16:12  
 Operator : MA/JU  
 Sample : 03414-22  
 Misc :  
 ALS Vial : 12 Sample Multiplier: 1

Instrument :  
 BNA\_G  
 ClientSampleId :

Quant Time: Jul 14 00:43:21 2023  
 Quant Method : Z:\svoasrv\HPCHEM1\BNA\_P\Methods\SFAM-EPA-BP071223.MA.M  
 Quant Title : SVOA CALIBRATION  
 QLast Update : Thu Jul 13 18:57:06 2023  
 Response via : Initial Calibration

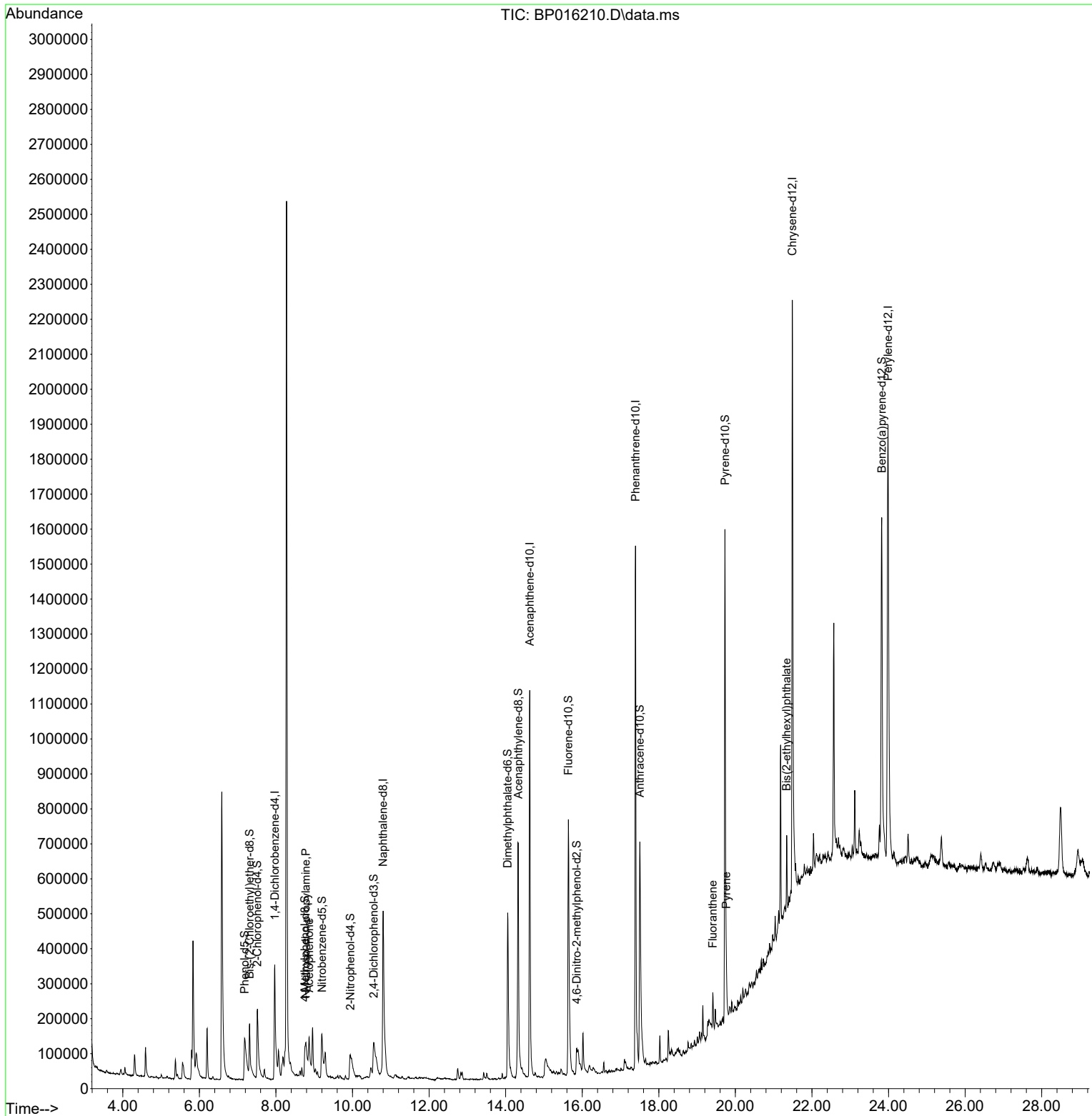
Compound	R.T.	QIon	Response	Conc	Units	Dev(Min)
-----						
Internal Standards						
1) 1,4-Dichlorobenzene-d4	7.969	152	130248	20.000	ng/ul	0.00
20) Naphthalene-d8	10.798	136	616778	20.000	ng/ul	0.02
38) Acenaphthene-d10	14.627	164	422195	20.000	ng/ul	0.01
64) Phenanthrene-d10	17.392	188	975890	20.000	ng/ul	0.01
79) Chrysene-d12	21.486	240	1029872	20.000	ng/ul	0.00
88) Perylene-d12	23.986	264	1194504	20.000	ng/ul	0.00
System Monitoring Compounds						
3) 1,4-Dioxane-d8	3.287	96	3506	0.953	ng/uL	0.00
4) Pyridine-d5	3.746	84	934	0.102	ng/ul	0.00
7) Phenol-d5	7.181	99	151027	12.837	ng/ul	0.02
9) Bis-(2-Chloroethyl)eth...	7.310	67	104696	13.161	ng/ul	0.01
11) 2-Chlorophenol-d4	7.510	132	126318	14.874	ng/ul	0.01
15) 4-Methylphenol-d8	8.757	113	59929	6.323	ng/ul	0.05
21) Nitrobenzene-d5	9.204	128	55129	12.956	ng/ul	0.05
24) 2-Nitrophenol-d4	9.939	143	33491	6.906	ng/ul	0.05
28) 2,4-Dichlorophenol-d3	10.557	165	95528	11.375	ng/ul	0.10
31) 4-Chloroaniline-d4	11.098	131	3939	0.293	ng/ul	0.13
46) Dimethylphthalate-d6	14.051	166	482865	14.993	ng/ul	0.02
49) Acenaphthylene-d8	14.327	160	517246	14.655	ng/ul	0.01
54) 4-Nitrophenol-d4	14.969	143	10	0.002	ng/ul	0.03
60) Fluorene-d10	15.639	176	422264	15.667	ng/ul	0.02
65) 4,6-Dinitro-2-methylph...	15.857	200	11205	1.989	ng/ul	0.06
73) Anthracene-d10	17.504	188	598295	14.016	ng/ul	0.02
81) Pyrene-d10	19.727	212	852174	15.946	ng/ul	0.00
92) Benzo(a)pyrene-d12	23.821	264	806642	14.062	ng/ul	0.00
Target Compounds						
16) Acetophenone	8.869	105	62811	4.019	ng/ul	98
17) N-Nitroso-di-n-propyla...	8.781	70	18596	2.220	ng/ul#	88
80) Fluoranthene	19.410	202	68147	1.091	ng/ul	97
82) Pyrene	19.762	202	69544	1.042	ng/ul	99
86) Bis(2-ethylhexyl)phtha...	21.339	149	60161	1.400	ng/ul	100

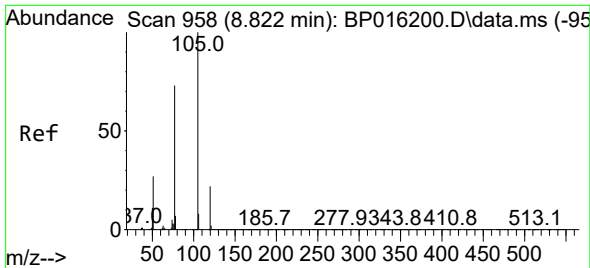
(#) = qualifier out of range (m) = manual integration (+) = signals summed

Data Path : Z:\svoasrv\HPCHEM1\BNA\_P\Data\BP071323\  
 Data File : BP016210.D  
 Acq On : 13 Jul 2023 16:12  
 Operator : MA/JU  
 Sample : 03414-22  
 Misc :  
 ALS Vial : 12 Sample Multiplier: 1

Instrument :  
 BNA\_G  
 ClientSampleId :

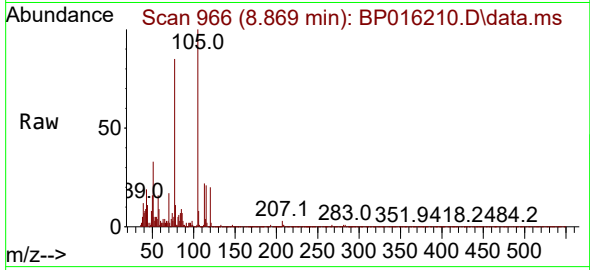
Quant Time: Jul 14 00:43:21 2023  
 Quant Method : Z:\svoasrv\HPCHEM1\BNA\_P\Methods\SFAM-EPA-BP071223.MA.M  
 Quant Title : SVOA CALIBRATION  
 QLast Update : Thu Jul 13 18:57:06 2023  
 Response via : Initial Calibration



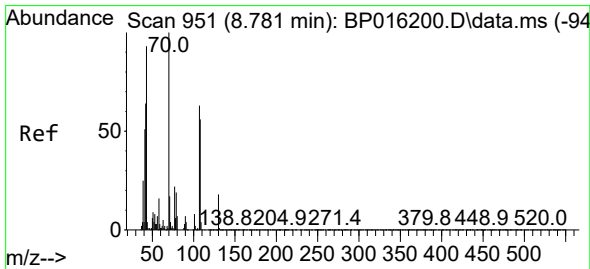
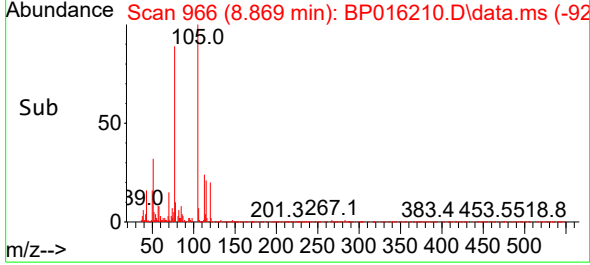
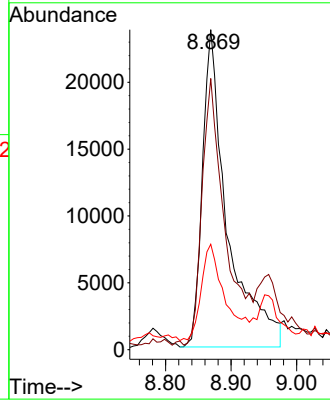


#16  
 Acetophenone  
 Concen: 4.019 ng/ul  
 RT: 8.869 min Scan# 901  
 Delta R.T. 0.047 min  
 Lab File: BP016210.D  
 Acq: 13 Jul 2023 16:12

Instrument :  
 BNA\_G  
 ClientSampleId :

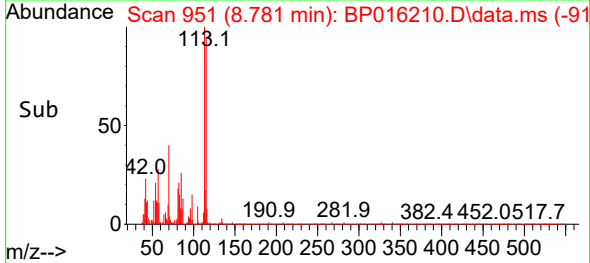
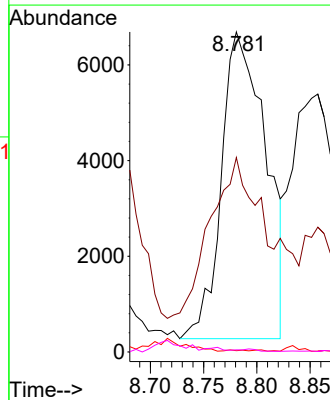
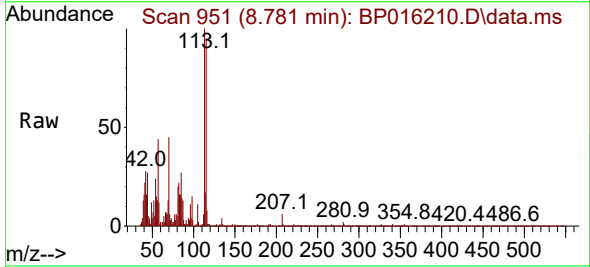


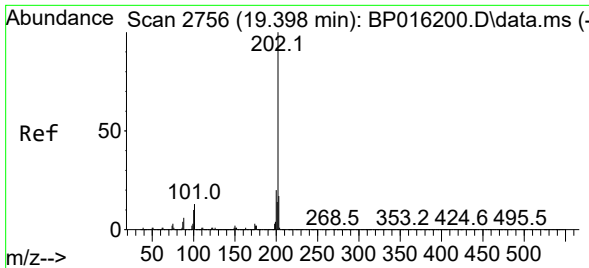
Tgt Ion: 105 Resp: 62811  
 Ion Ratio Lower Upper  
 105 100  
 77 84.8 70.2 105.2  
 51 33.0 26.3 39.5



#17  
 N-Nitroso-di-n-propylamine  
 Concen: 2.220 ng/ul  
 RT: 8.781 min Scan# 951  
 Delta R.T. -0.000 min  
 Lab File: BP016210.D  
 Acq: 13 Jul 2023 16:12

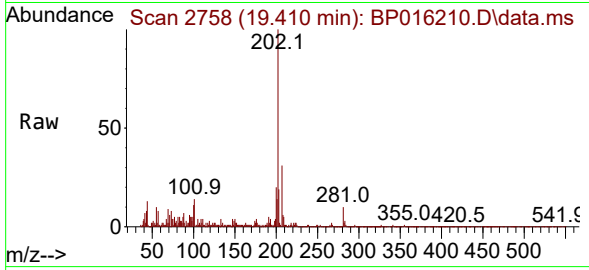
Tgt Ion: 70 Resp: 18596  
 Ion Ratio Lower Upper  
 70 100  
 42 60.7 50.8 76.2  
 101 0.7 7.0 10.6#  
 130 0.6 13.3 19.9#



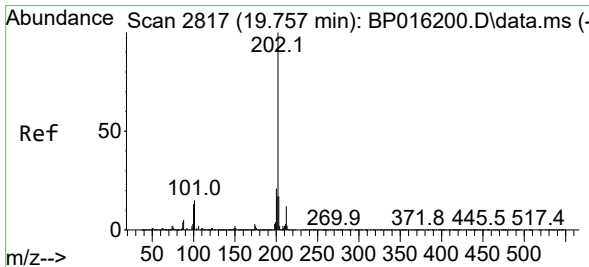
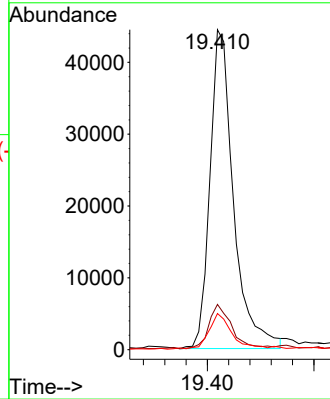
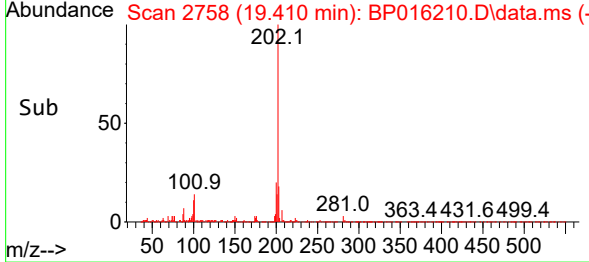


#80  
 Fluoranthene  
 Concen: 1.091 ng/uI  
 RT: 19.410 min Scan# 2758  
 Delta R.T. 0.012 min  
 Lab File: BP016210.D  
 Acq: 13 Jul 2023 16:12

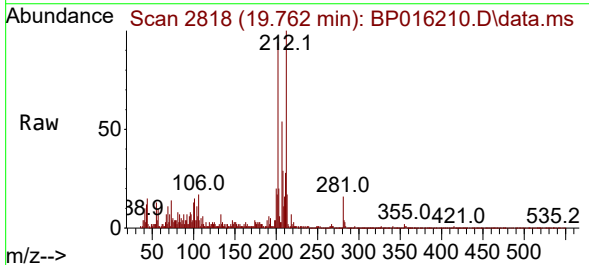
Instrument :  
 BNA\_G  
 ClientSampleId :



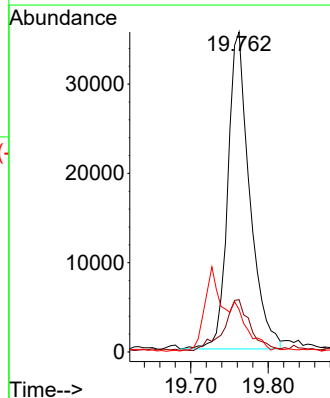
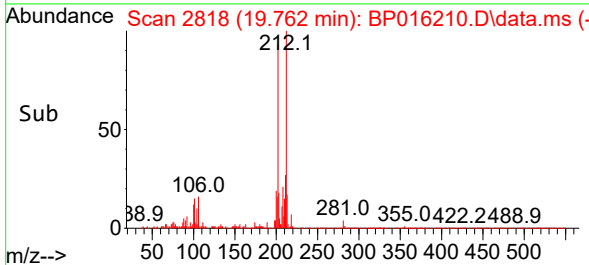
Tgt Ion:202 Resp: 68147  
 Ion Ratio Lower Upper  
 202 100  
 101 14.2 10.4 15.6  
 100 11.3 8.2 12.4

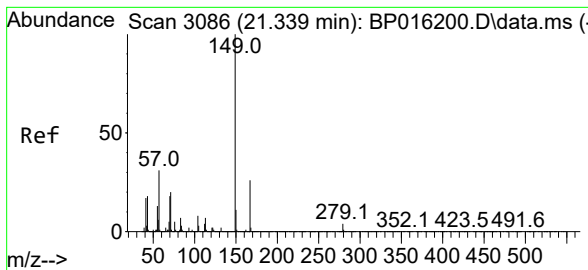


#82  
 Pyrene  
 Concen: 1.042 ng/uI  
 RT: 19.762 min Scan# 2818  
 Delta R.T. 0.006 min  
 Lab File: BP016210.D  
 Acq: 13 Jul 2023 16:12



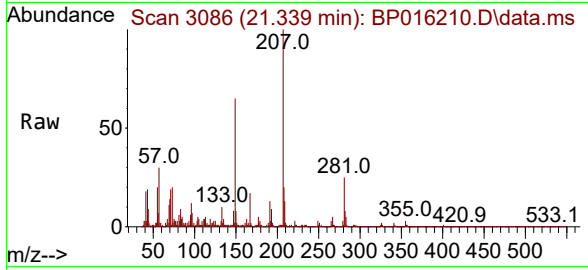
Tgt Ion:202 Resp: 69544  
 Ion Ratio Lower Upper  
 202 100  
 101 16.3 12.4 18.6  
 100 13.3 10.5 15.7





#86  
 Bis(2-ethylhexyl)phthalate  
 Concen: 1.400 ng/ul  
 RT: 21.339 min Scan# 30  
 Delta R.T. -0.000 min  
 Lab File: BP016210.D  
 Acq: 13 Jul 2023 16:12

Instrument :  
 BNA\_G  
 ClientSampleId :



Tgt Ion:149 Resp: 60161

Ion	Ratio	Lower	Upper
149	100		
167	26.1	21.0	31.4
279	4.3	3.0	4.6

