

Data Path : Z:\svoasrv\HPCHEM1\BNA_G\Data\BG071823\
 Data File : BG058341.D
 Acq On : 20 Jul 2023 00:20
 Operator : CG/JU
 Sample : 03452-16
 Misc :
 ALS Vial : 13 Sample Multiplier: 1

Instrument :
 BNA_G
 ClientSampleId :
 A46P8

Integration Parameters: LSCINT.P
 Integrator: RTE
 Smoothing : OFF Filtering: 5
 Sampling : 1 Min Area: 0.1 % of largest Peak
 Start Thrs: 0.2 Max Peaks: 100
 Stop Thrs : 0 Peak Location: TOP

If leading or trailing edge < 100 prefer < Baseline drop else tangent >
 Peak separation: 5

Method : Z:\svoasrv\HPCHEM1\BNA_G\Methods\SFAM-EPA-BG071723.MA.M
 Title : SVOA CALIBRATION

Signal : TIC: BG058341.D\data.ms

peak #	R.T. min	first scan	max scan	last scan	PK TY	peak height	corr. area	corr. % max.	% of total
1	3.123	3	6	8	rBV	2031637	2680564	46.09%	11.247%
2	3.147	8	10	41	rVB	3262114	5815361	100.00%	24.400%
3	3.746	107	112	122	rBV5	57080	141078	2.43%	0.592%
4	3.858	128	131	136	rVV	35159	51620	0.89%	0.217%
5	3.911	136	140	147	rVV3	23674	45629	0.78%	0.191%
6	3.987	150	153	161	rVB2	22077	34416	0.59%	0.144%
7	4.069	161	167	176	rBV2	189430	335642	5.77%	1.408%
8	4.152	176	181	190	rVV	107662	184255	3.17%	0.773%
9	4.234	190	195	202	rVV	103954	163005	2.80%	0.684%
10	4.304	202	207	220	rVB	87094	153949	2.65%	0.646%
11	4.451	226	232	241	rBV2	60830	103535	1.78%	0.434%
12	4.586	249	255	258	rBV	22301	41807	0.72%	0.175%
13	4.639	258	264	267	rVV	332029	530492	9.12%	2.226%
14	4.675	267	270	274	rVV	172665	260839	4.49%	1.094%
15	4.710	274	276	284	rVB	71630	97860	1.68%	0.411%
16	5.080	329	339	345	rBV2	32569	59341	1.02%	0.249%
17	5.356	379	386	399	rBV2	45652	87518	1.50%	0.367%
18	5.791	451	460	465	rBV2	262073	516918	8.89%	2.169%
19	5.832	465	467	472	rVV	78729	108185	1.86%	0.454%
20	5.891	472	477	503	rVB2	92053	303175	5.21%	1.272%
21	6.173	520	525	533	rVB4	45891	90393	1.55%	0.379%
22	6.402	553	564	573	rBV4	66418	185408	3.19%	0.778%
23	6.519	578	584	593	rVB	350534	604191	10.39%	2.535%
24	6.725	610	619	624	rBV3	32907	75494	1.30%	0.317%
25	7.060	670	676	683	rVV2	47665	87267	1.50%	0.366%
26	7.131	683	688	694	rVB3	24450	42531	0.73%	0.178%
27	7.225	698	704	712	rVB	56886	91845	1.58%	0.385%
28	7.430	731	739	746	rBV	52884	110444	1.90%	0.463%
29	7.577	757	764	773	rBV3	61654	133937	2.30%	0.562%
30	7.894	811	818	825	rVV	146943	245842	4.23%	1.031%
31	7.965	825	830	836	rVV3	25340	45295	0.78%	0.190%
32	8.065	841	847	853	rVV2	65099	124435	2.14%	0.522%
33	8.141	854	860	866	rVV3	87709	186084	3.20%	0.781%
34	8.212	866	872	884	rVB	495788	887051	15.25%	3.722%
35	8.658	943	948	953	rBV5	19622	41993	0.72%	0.176%
36	8.723	953	959	970	rVB3	29329	67293	1.16%	0.282%

Data Path : Z:\svoasrv\HPCHEM1\BNA_G\Data\BG071823\
 Data File : BG058341.D
 Acq On : 20 Jul 2023 00:20
 Operator : CG/JU
 Sample : 03452-16
 Misc :
 ALS Vial : 13 Sample Multiplier: 1

Instrument :
 BNA_G
 ClientSampleId :
 A46P8

Integration Parameters: LSCINT.P

Integrator: RTE
 Smoothing : OFF Filtering: 5
 Sampling : 1 Min Area: 0.1 % of largest Peak
 Start Thrs: 0.2 Max Peaks: 100
 Stop Thrs : 0 Peak Location: TOP

If leading or trailing edge < 100 prefer < Baseline drop else tangent >
 Peak separation: 5

Method : Z:\svoasrv\HPCHEM1\BNA_G\Methods\SFAM-EPA-BG071723.MA.M
 Title : SVOA CALIBRATION

37	8.858	970	982	984	rBV6	42702	91480	1.57%	0.384%
38	9.058	1010	1016	1027	rVB	75208	151854	2.61%	0.637%
39	9.199	1034	1040	1045	rBV6	14316	30988	0.53%	0.130%
40	9.340	1060	1064	1070	rVV3	24492	55899	0.96%	0.235%
41	9.445	1078	1082	1087	rVV6	16028	41501	0.71%	0.174%
42	9.498	1087	1091	1103	rVB6	19166	55737	0.96%	0.234%
43	9.780	1133	1139	1152	rVB2	63585	137008	2.36%	0.575%
44	10.045	1179	1184	1188	rBV5	39866	90990	1.56%	0.382%
45	10.321	1222	1231	1238	rBV3	45249	116042	2.00%	0.487%
46	10.550	1261	1270	1277	rBV2	34829	69630	1.20%	0.292%
47	10.697	1281	1295	1304	rBV	222620	429880	7.39%	1.804%
48	10.873	1319	1325	1329	rVV	21934	39316	0.68%	0.165%
49	11.073	1351	1359	1360	rBV3	27333	46206	0.79%	0.194%
50	11.326	1398	1402	1405	rVV2	31803	53000	0.91%	0.222%
51	11.361	1405	1408	1412	rVV	33809	57801	0.99%	0.243%
52	11.426	1413	1419	1427	rVV3	35756	86635	1.49%	0.363%
53	11.502	1427	1432	1443	rVB5	35056	73569	1.27%	0.309%
54	11.614	1443	1451	1461	rBV5	14324	42836	0.74%	0.180%
55	11.896	1492	1499	1502	rBV5	11949	27139	0.47%	0.114%
56	12.136	1533	1540	1547	rBV5	13153	31748	0.55%	0.133%
57	12.418	1582	1588	1594	rBV3	29375	48533	0.83%	0.204%
58	12.577	1609	1615	1621	rBV2	22421	37480	0.64%	0.157%
59	12.747	1639	1644	1648	rBV2	28293	51337	0.88%	0.215%
60	12.900	1664	1670	1673	rBV2	20716	37558	0.65%	0.158%
61	12.935	1673	1676	1682	rVB4	19871	28552	0.49%	0.120%
62	13.934	1840	1846	1854	rBV	196077	285896	4.92%	1.200%
63	14.222	1890	1895	1905	rVB2	185900	316931	5.45%	1.330%
64	14.534	1942	1948	1956	rVB	404704	627009	10.78%	2.631%
65	14.651	1964	1968	1977	rVB	41785	61850	1.06%	0.260%
66	14.739	1977	1983	1987	rBV2	40425	74020	1.27%	0.311%
67	15.521	2110	2116	2123	rVV	292596	457353	7.86%	1.919%
68	15.644	2132	2137	2147	rVB	60225	99526	1.71%	0.418%
69	15.779	2150	2160	2166	rBV2	140071	211652	3.64%	0.888%
70	15.885	2169	2178	2184	rBV	41155	69363	1.19%	0.291%
71	16.255	2236	2241	2245	rVB2	23606	34269	0.59%	0.144%
72	16.390	2260	2264	2270	rVB	49588	72209	1.24%	0.303%
73	16.508	2277	2284	2289	rBV	176469	260612	4.48%	1.093%
74	16.802	2331	2334	2339	rBV2	21924	29925	0.51%	0.126%
75	17.148	2389	2393	2396	rBV3	33749	46816	0.81%	0.196%
76	17.189	2396	2400	2408	rVB2	43984	64749	1.11%	0.272%

Data Path : Z:\svoasrv\HPCHEM1\BNA_G\Data\BG071823\
 Data File : BG058341.D
 Acq On : 20 Jul 2023 00:20
 Operator : CG/JU
 Sample : 03452-16
 Misc :
 ALS Vial : 13 Sample Multiplier: 1

Instrument :
 BNA_G
 ClientSampleId :
 A46P8

Integration Parameters: LSCINT.P

Integrator: RTE
 Smoothing : OFF Filtering: 5
 Sampling : 1 Min Area: 0.1 % of largest Peak
 Start Thrs: 0.2 Max Peaks: 100
 Stop Thrs : 0 Peak Location: TOP

If leading or trailing edge < 100 prefer < Baseline drop else tangent >
 Peak separation: 5

Method : Z:\svoasrv\HPCHEM1\BNA_G\Methods\SFAM-EPA-BG071723.MA.M
 Title : SVOA CALIBRATION

77	17.277	2408	2415	2426	rBV	535254	885729	15.23%	3.716%
78	17.371	2426	2431	2439	rVV2	108197	171068	2.94%	0.718%
79	17.448	2440	2444	2450	rVB	41999	60829	1.05%	0.255%
80	17.724	2487	2491	2494	rVV	18043	26627	0.46%	0.112%
81	17.859	2508	2514	2522	rVB4	19820	32673	0.56%	0.137%
82	18.159	2560	2565	2569	rBV4	38492	59232	1.02%	0.249%
83	18.341	2592	2596	2601	rVB4	22103	34324	0.59%	0.144%
84	18.400	2601	2606	2610	rVV5	21039	28020	0.48%	0.118%
85	18.658	2645	2650	2655	rVB3	42626	62636	1.08%	0.263%
86	19.228	2737	2747	2751	rVV3	13964	38396	0.66%	0.161%
87	19.328	2760	2764	2771	rVB	37674	57487	0.99%	0.241%
88	19.663	2815	2821	2834	rBV	348541	551840	9.49%	2.315%
89	20.903	3028	3032	3036	rBV	80224	94932	1.63%	0.398%
90	21.408	3113	3118	3124	rBV	118546	157824	2.71%	0.662%
91	21.525	3131	3138	3151	rBV	478987	830378	14.28%	3.484%
92	21.661	3158	3161	3165	rBV	16124	26741	0.46%	0.112%
93	21.702	3165	3168	3173	rVB2	24420	33542	0.58%	0.141%
94	22.289	3265	3268	3275	rVB2	26474	46486	0.80%	0.195%
95	22.947	3374	3380	3393	rVB3	52860	133175	2.29%	0.559%
96	23.735	3509	3514	3522	rVB4	28019	64087	1.10%	0.269%
97	24.434	3626	3633	3642	rVB	36045	97110	1.67%	0.407%
98	24.657	3661	3671	3683	rVB	297192	855997	14.72%	3.592%
99	25.732	3849	3854	3864	rVB4	22329	66678	1.15%	0.280%
100	28.617	4335	4345	4347	rBV4	13591	38491	0.66%	0.161%

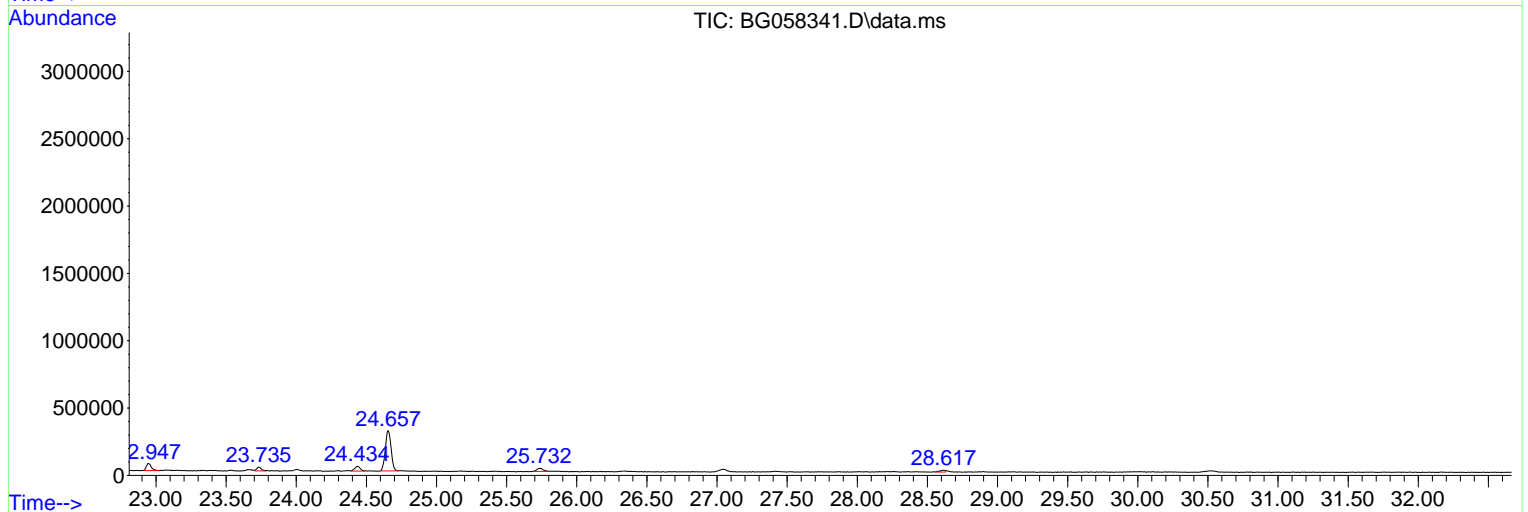
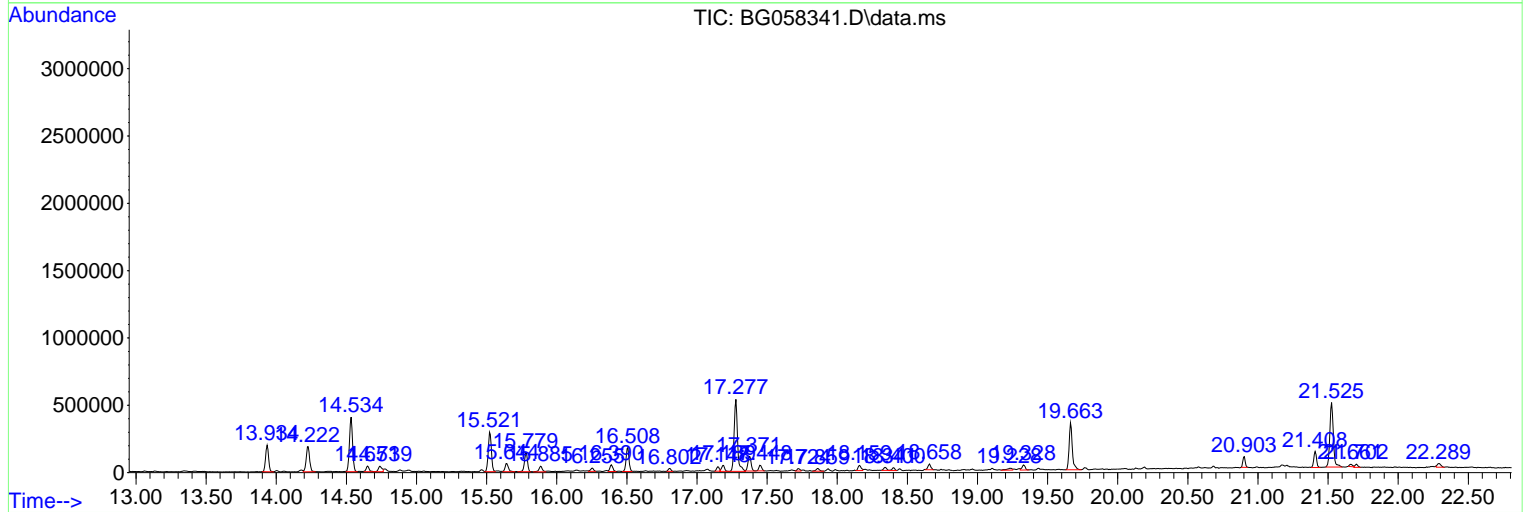
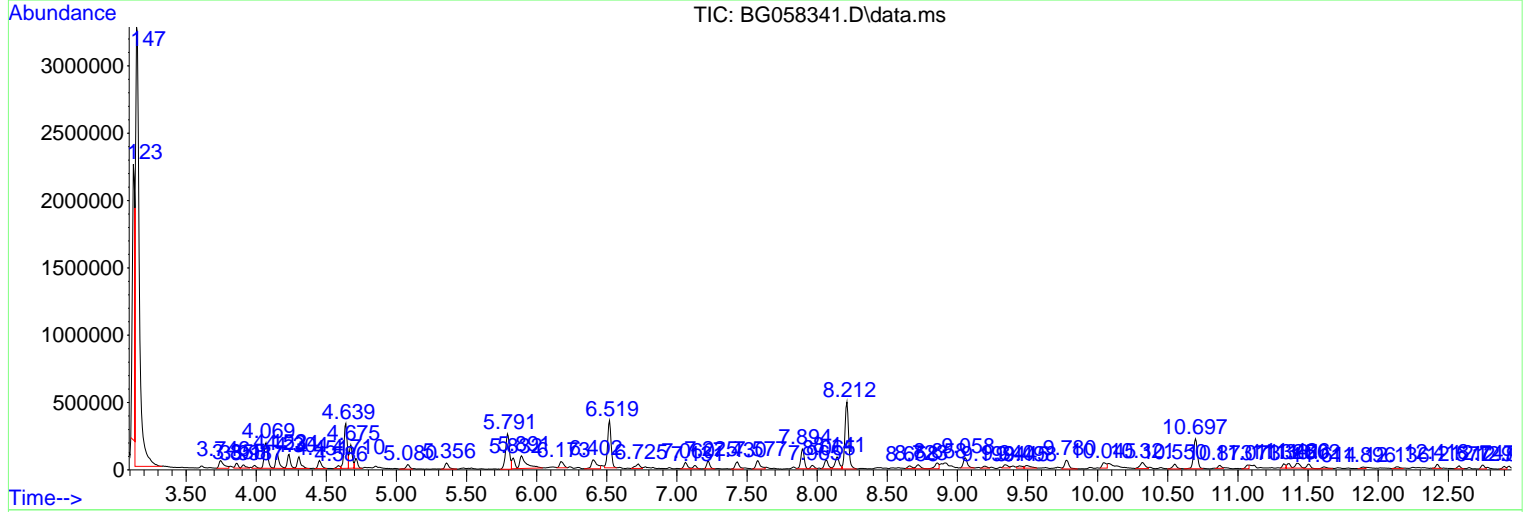
Sum of corrected areas: 23833893

Data Path : Z:\svoasrv\HPCHEM1\BNA_G\Data\BG071823\
 Data File : BG058341.D
 Acq On : 20 Jul 2023 00:20
 Operator : CG/JU
 Sample : 03452-16
 Misc :
 ALS Vial : 13 Sample Multiplier: 1

Instrument :
 BNA_G
 ClientSampleId :
 A46P8

Quant Method : Z:\svoasrv\HPCHEM1\BNA_G\Methods\SFAM-EPA-BG071723.MA.M
 Quant Title : SVOA CALIBRATION

TIC Library : C:\DATABASE\NIST20.L
 TIC Integration Parameters: LSCINT.P



Data Path : Z:\svoasrv\HPCHEM1\BNA_G\Data\BG071823\
 Data File : BG058341.D
 Acq On : 20 Jul 2023 00:20
 Operator : CG/JU
 Sample : 03452-16
 Misc :
 ALS Vial : 13 Sample Multiplier: 1

Instrument :
 BNA_G
 ClientSampleId :
 A46P8

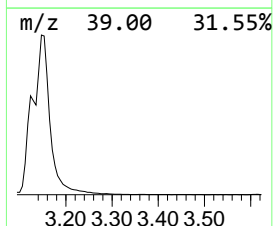
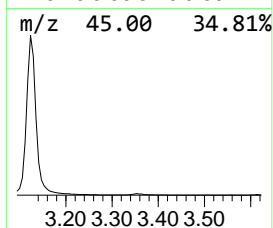
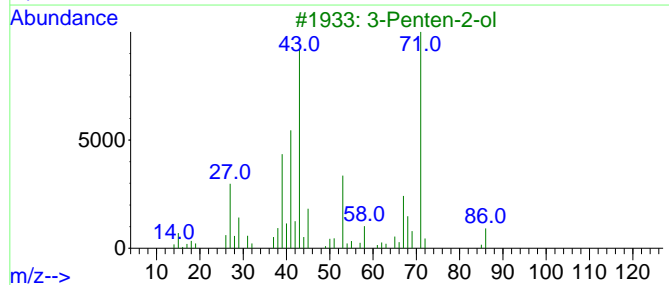
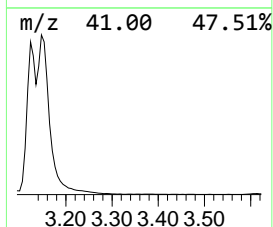
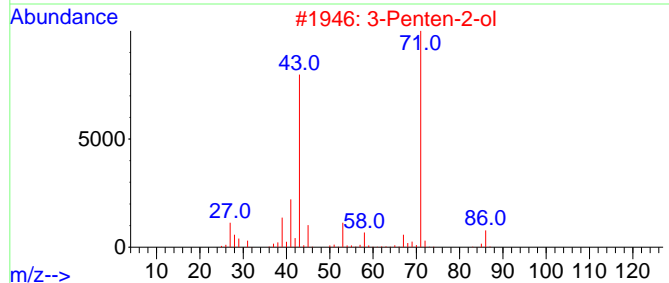
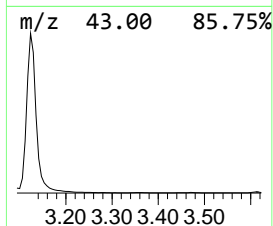
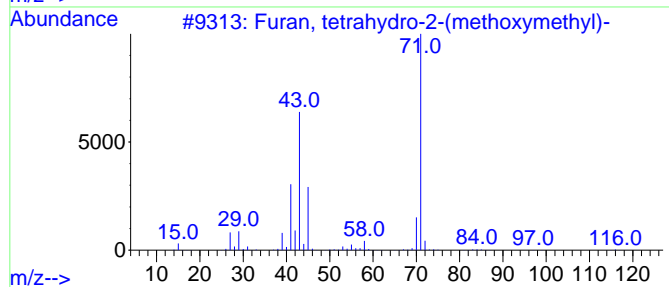
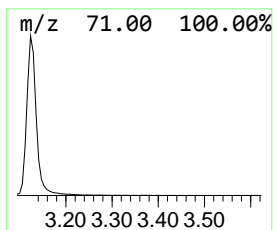
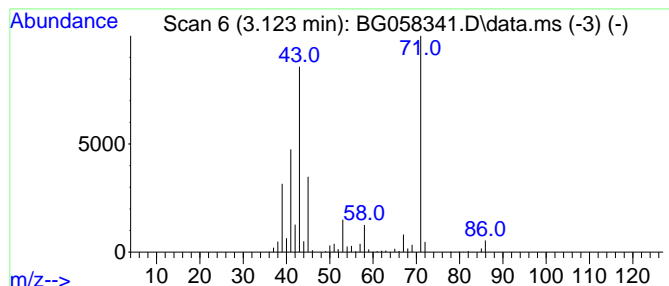
Quant Method : Z:\svoasrv\HPCHEM1\BNA_G\Methods\SFAM-EPA-BG071723.MA.M
 Quant Title : SVOA CALIBRATION

TIC Library : C:\DATABASE\NIST20.L
 TIC Integration Parameters: LSCINT.P

 Peak Number 1 Furan, tetrahydro-2-(methox... Concentration Rank 2

R.T.	EstConc	Area	Relative to ISTD	R.T.
3.123	218.07 ng/ul	2680560	1,4-Dichlorobenzene-d4	7.894

Hit#	of 5	Tentative ID	MW	MolForm	CAS#	Qual
1		Furan, tetrahydro-2-(methoxymeth...	116	C6H12O2	019354-27-9	72
2		3-Penten-2-ol	86	C5H10O	001569-50-2	72
3		3-Penten-2-ol	86	C5H10O	001569-50-2	72
4		3-Buten-2-ol, 2-methyl-	86	C5H10O	000115-18-4	72
5		Butane, 2-bromo-2-methyl-	150	C5H11Br	000507-36-8	53



Data Path : Z:\svoasrv\HPCHEM1\BNA_G\Data\BG071823\
 Data File : BG058341.D
 Acq On : 20 Jul 2023 00:20
 Operator : CG/JU
 Sample : 03452-16
 Misc :
 ALS Vial : 13 Sample Multiplier: 1

Instrument :
 BNA_G
 ClientSampleId :
 A46P8

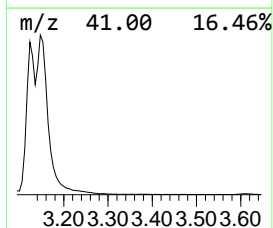
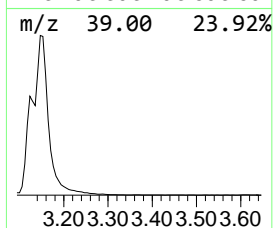
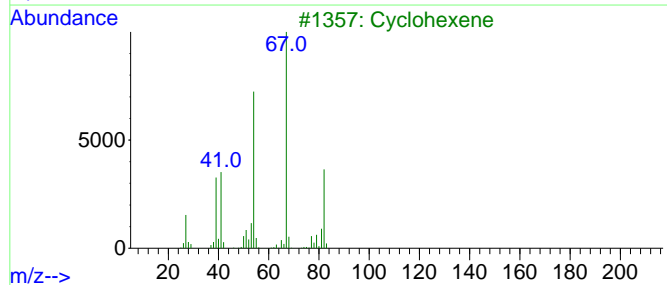
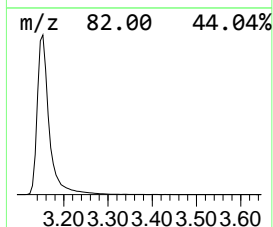
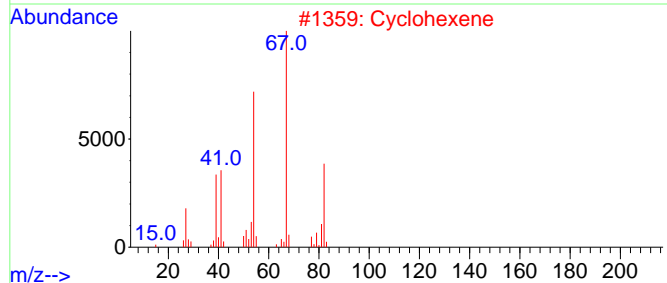
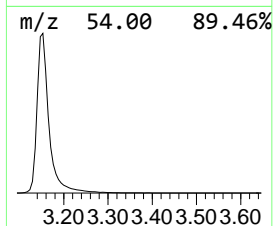
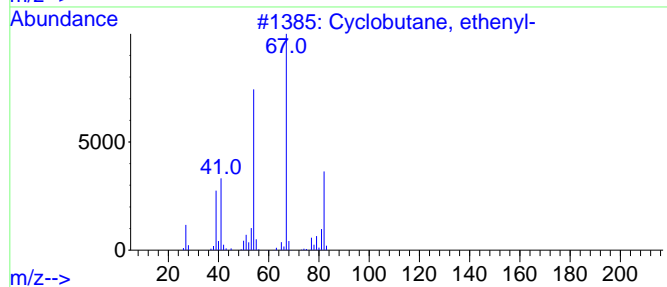
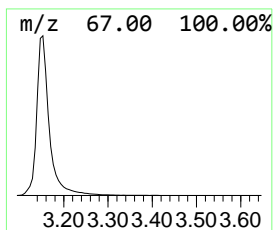
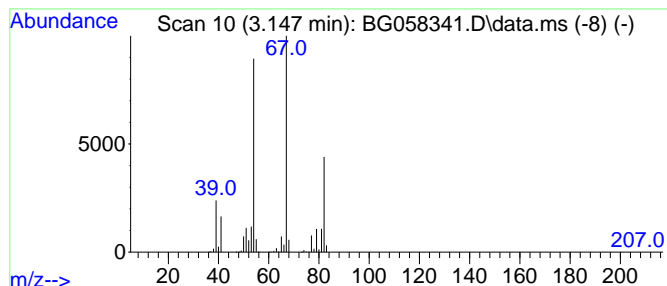
Quant Method : Z:\svoasrv\HPCHEM1\BNA_G\Methods\SFAM-EPA-BG071723.MA.M
 Quant Title : SVOA CALIBRATION

TIC Library : C:\DATABASE\NIST20.L
 TIC Integration Parameters: LSCINT.P

 Peak Number 2 Cyclobutane, ethenyl- Concentration Rank 1

R.T.	EstConc	Area	Relative to ISTD	R.T.
3.147	473.10 ng/ul	5815360	1,4-Dichlorobenzene-d4	7.894

Hit#	of	5	Tentative ID	MW	MolForm	CAS#	Qual
1			Cyclobutane, ethenyl-	82	C6H10	002597-49-1	95
2			Cyclohexene	82	C6H10	000110-83-8	94
3			Cyclohexene	82	C6H10	000110-83-8	91
4			Cyclohexene	82	C6H10	000110-83-8	91
5			Ethylidenecyclobutane	82	C6H10	001528-21-8	91



Data Path : Z:\svoasrv\HPCHEM1\BNA_G\Data\BG071823\
 Data File : BG058341.D
 Acq On : 20 Jul 2023 00:20
 Operator : CG/JU
 Sample : 03452-16
 Misc :
 ALS Vial : 13 Sample Multiplier: 1

Instrument :
 BNA_G
 ClientSampleId :
 A46P8

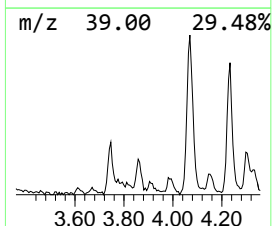
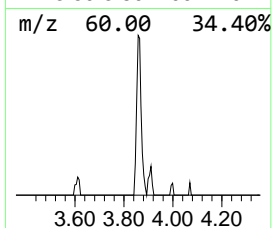
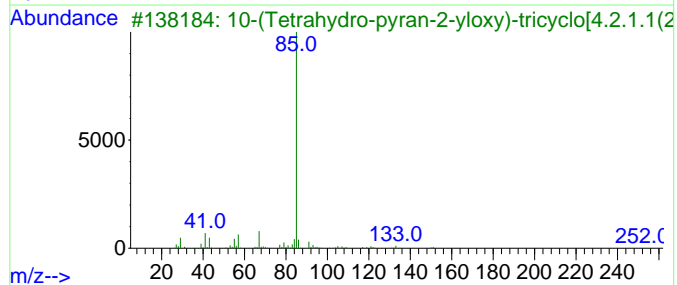
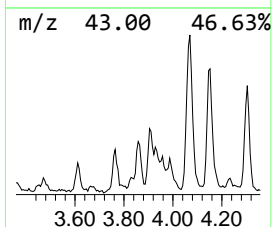
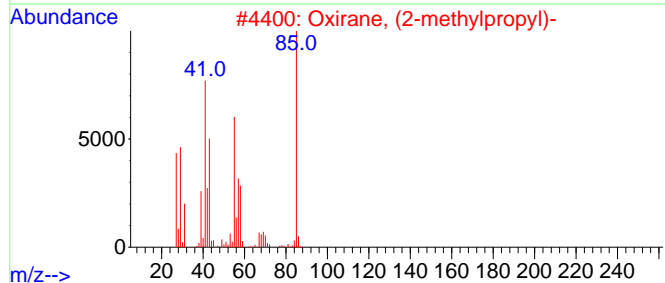
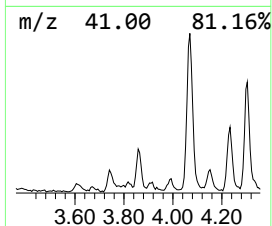
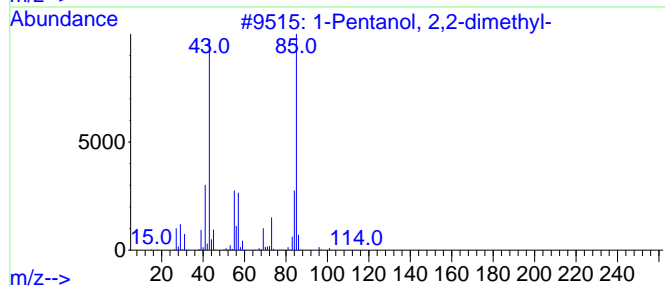
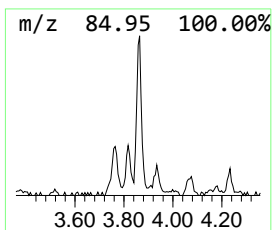
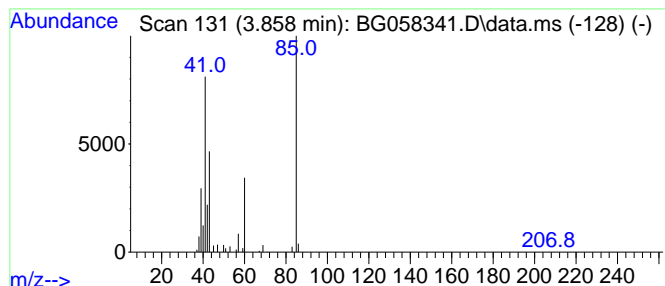
Quant Method : Z:\svoasrv\HPCHEM1\BNA_G\Methods\SFAM-EPA-BG071723.MA.M
 Quant Title : SVOA CALIBRATION

TIC Library : C:\DATABASE\NIST20.L
 TIC Integration Parameters: LSCINT.P

 Peak Number 3 unknown-01 Concentration Rank 28

R.T.	EstConc	Area	Relative to ISTD	R.T.
3.858	4.20 ng/ul	51620	1,4-Dichlorobenzene-d4	7.894

Hit#	of	5	Tentative ID	MW	MolForm	CAS#	Qual
1			1-Pentanol, 2,2-dimethyl-	116	C7H16O	002370-12-9	9
2			Oxirane, (2-methylpropyl)-	100	C6H12O	023850-78-4	9
3			10-(Tetrahydro-pyran-2-yloxy)-tr...	252	C15H24O3	1010192-28-8	9
4			Methacrylamide	85	C4H7NO	000079-39-0	9
5			Methacrylamide	85	C4H7NO	000079-39-0	9



Data Path : Z:\svoasrv\HPCHEM1\BNA_G\Data\BG071823\
 Data File : BG058341.D
 Acq On : 20 Jul 2023 00:20
 Operator : CG/JU
 Sample : 03452-16
 Misc :
 ALS Vial : 13 Sample Multiplier: 1

Instrument :
 BNA_G
 ClientSampleId :
 A46P8

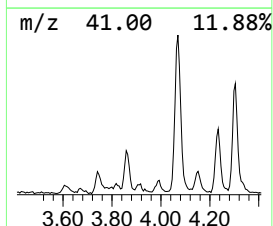
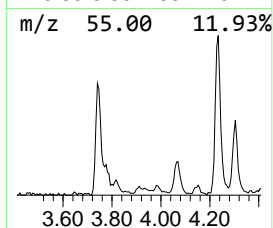
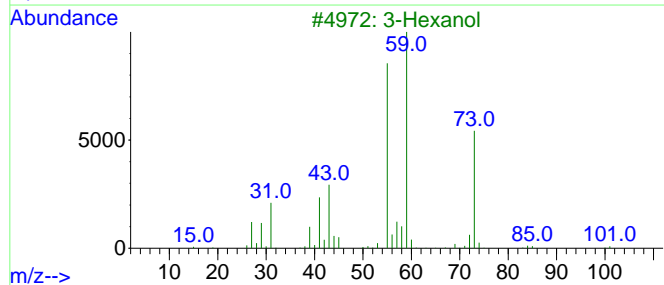
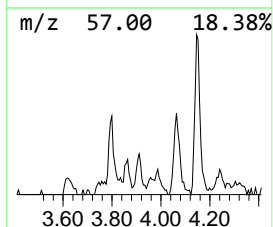
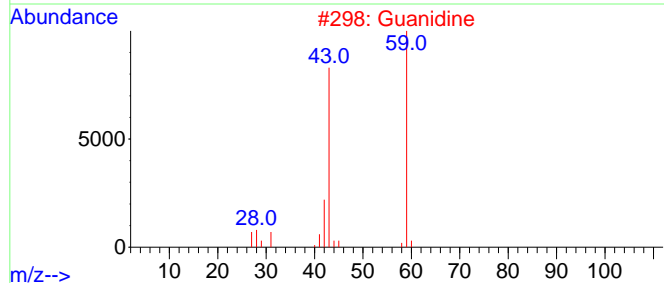
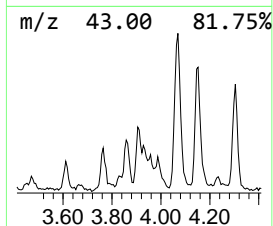
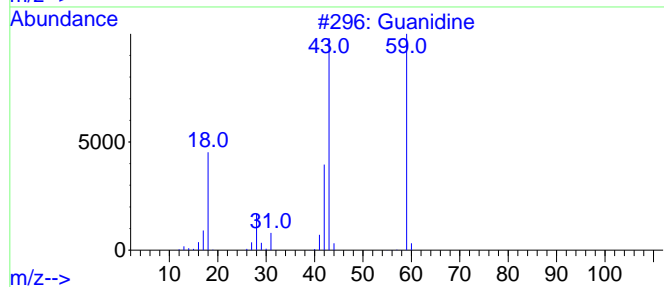
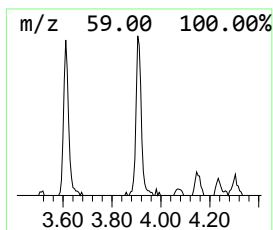
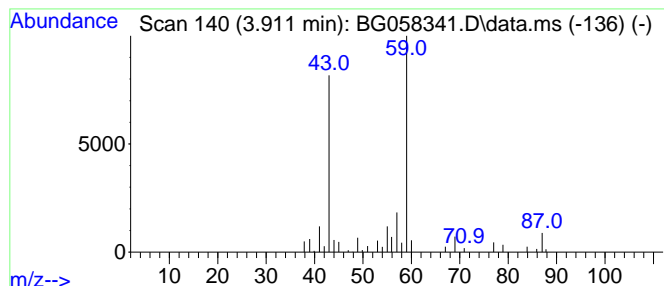
Quant Method : Z:\svoasrv\HPCHEM1\BNA_G\Methods\SFAM-EPA-BG071723.MA.M
 Quant Title : SVOA CALIBRATION

TIC Library : C:\DATABASE\NIST20.L
 TIC Integration Parameters: LSCINT.P

 Peak Number 4 unknown-02 Concentration Rank 30

R.T.	EstConc	Area	Relative to ISTD	R.T.
3.911	3.71 ng/ul	45629	1,4-Dichlorobenzene-d4	7.894

Hit#	of	5	Tentative ID	MW	MolForm	CAS#	Qual
1			Guanidine	59	CH5N3	000113-00-8	45
2			Guanidine	59	CH5N3	000113-00-8	45
3			3-Hexanol	102	C6H14O	000623-37-0	42
4			Butyl aldoxime, 3-methyl-, syn-	101	C5H11NO	005780-40-5	40
5			4-Methoxy-1-pentene	100	C6H12O	098386-09-5	40



Data Path : Z:\svoasrv\HPCHEM1\BNA_G\Data\BG071823\
 Data File : BG058341.D
 Acq On : 20 Jul 2023 00:20
 Operator : CG/JU
 Sample : 03452-16
 Misc :
 ALS Vial : 13 Sample Multiplier: 1

Instrument :
 BNA_G
 ClientSampleId :
 A46P8

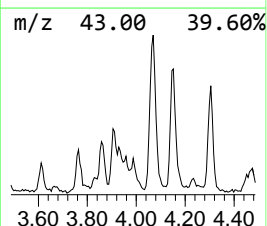
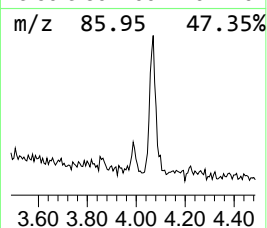
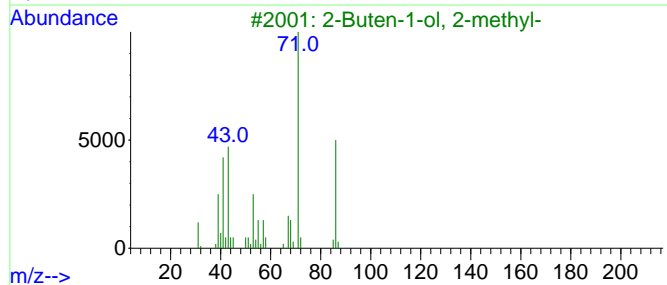
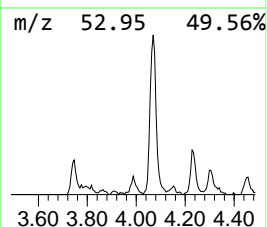
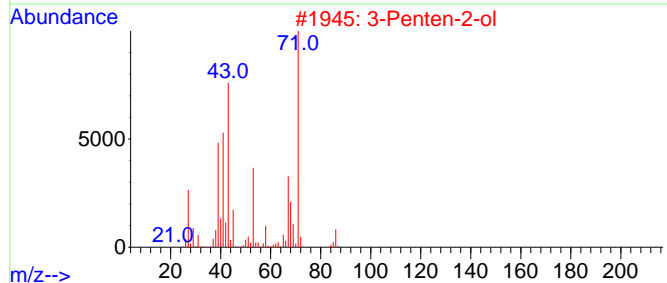
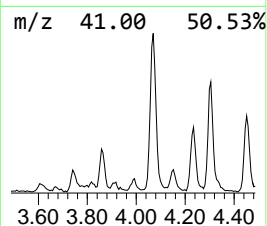
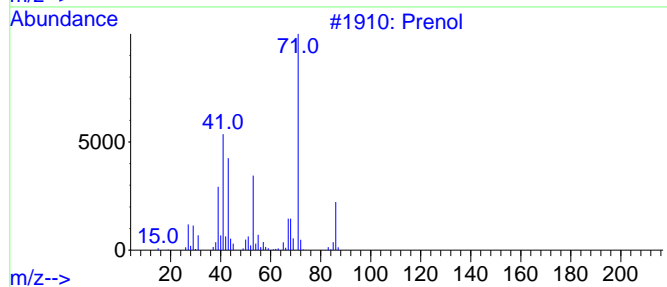
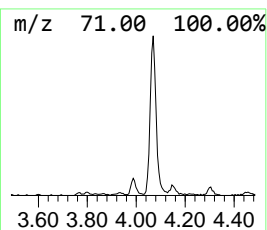
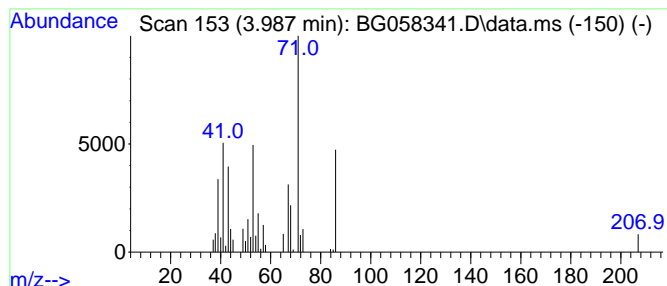
Quant Method : Z:\svoasrv\HPCHEM1\BNA_G\Methods\SFAM-EPA-BG071723.MA.M
 Quant Title : SVOA CALIBRATION

TIC Library : C:\DATABASE\NIST20.L
 TIC Integration Parameters: LSCINT.P

 Peak Number 5 Prenol Concentration Rank 38

R.T.	EstConc	Area	Relative to ISTD	R.T.
3.987	2.80 ng/ul	34416	1,4-Dichlorobenzene-d4	7.894

Hit#	of	5	Tentative ID	MW	MolForm	CAS#	Qual
1			Prenol	86	C5H10O	000556-82-1	53
2			3-Penten-2-ol	86	C5H10O	001569-50-2	50
3			2-Buten-1-ol, 2-methyl-	86	C5H10O	004675-87-0	38
4			2-Buten-1-ol, 2-methyl-	86	C5H10O	004675-87-0	25
5			1-Butene, 1-methoxy-	86	C5H10O	029512-02-5	22



Data Path : Z:\svoasrv\HPCHEM1\BNA_G\Data\BG071823\
 Data File : BG058341.D
 Acq On : 20 Jul 2023 00:20
 Operator : CG/JU
 Sample : 03452-16
 Misc :
 ALS Vial : 13 Sample Multiplier: 1

Instrument :
 BNA_G
 ClientSampleId :
 A46P8

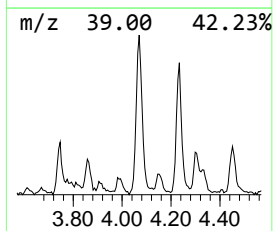
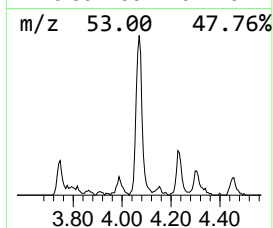
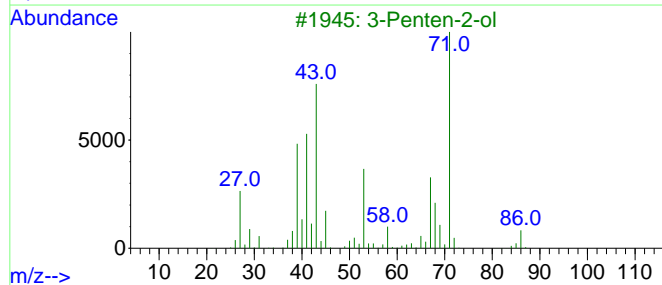
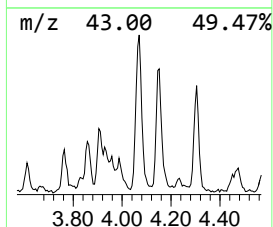
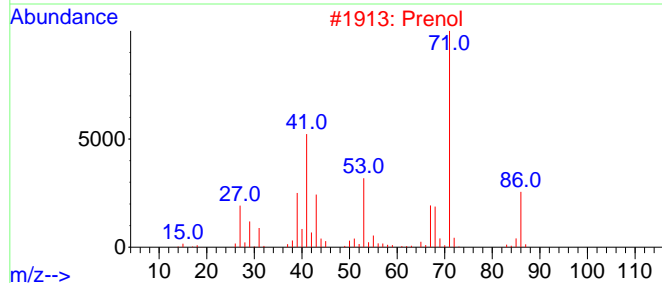
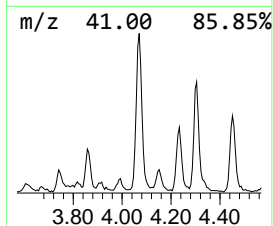
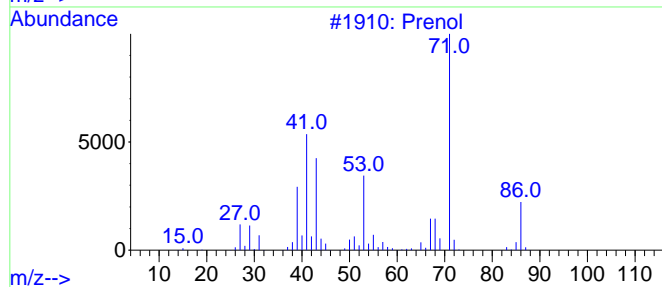
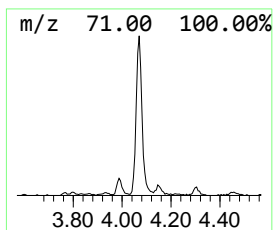
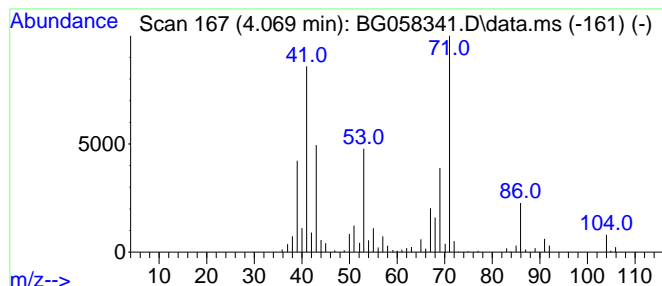
Quant Method : Z:\svoasrv\HPCHEM1\BNA_G\Methods\SFAM-EPA-BG071723.MA.M
 Quant Title : SVOA CALIBRATION

TIC Library : C:\DATABASE\NIST20.L
 TIC Integration Parameters: LSCINT.P

 Peak Number 6 unknown-03 Concentration Rank 7

R.T.	EstConc	Area	Relative to ISTD	R.T.
4.069	27.31 ng/ul	335642	1,4-Dichlorobenzene-d4	7.894

Hit#	of	5	Tentative ID	MW	MolForm	CAS#	Qual
1			Prenol	86	C5H10O	000556-82-1	87
2			Prenol	86	C5H10O	000556-82-1	41
3			3-Penten-2-ol	86	C5H10O	001569-50-2	39
4			2-Buten-1-ol, 2-methyl-	86	C5H10O	004675-87-0	38
5			1-Butene, 2-chloro-3-methyl-	104	C5H9Cl	017773-64-7	37



Data Path : Z:\svoasrv\HPCHEM1\BNA_G\Data\BG071823\
 Data File : BG058341.D
 Acq On : 20 Jul 2023 00:20
 Operator : CG/JU
 Sample : 03452-16
 Misc :
 ALS Vial : 13 Sample Multiplier: 1

Instrument :
 BNA_G
 ClientSampleId :
 A46P8

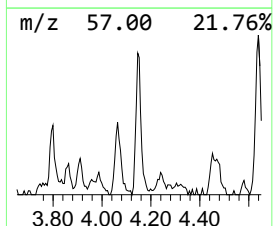
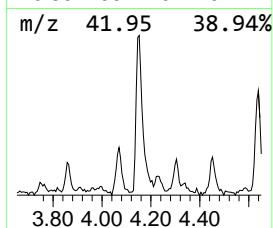
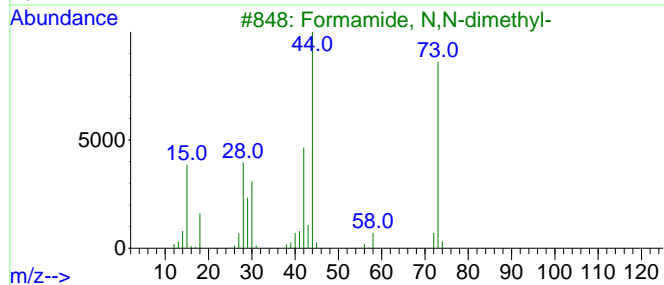
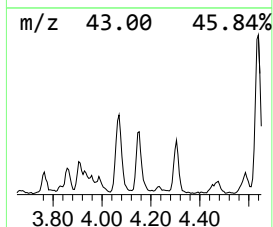
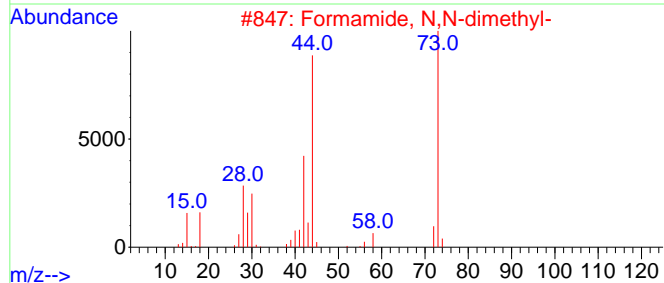
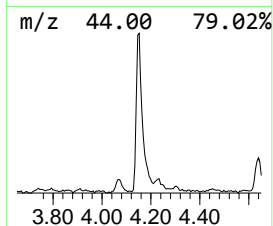
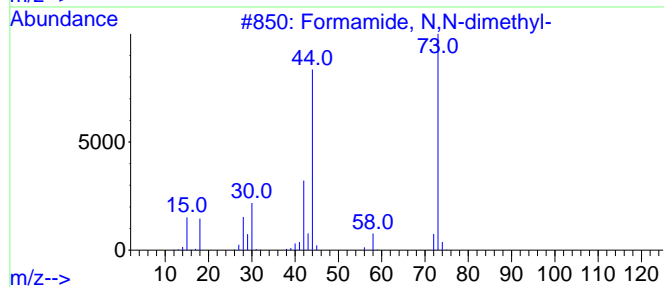
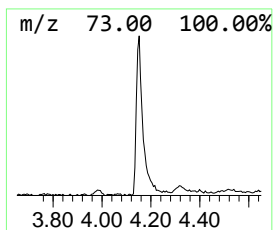
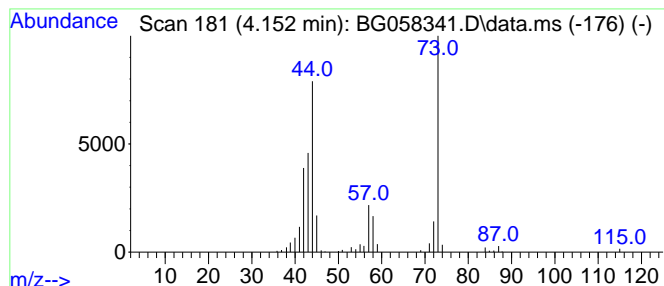
Quant Method : Z:\svoasrv\HPCHEM1\BNA_G\Methods\SFAM-EPA-BG071723.MA.M
 Quant Title : SVOA CALIBRATION

TIC Library : C:\DATABASE\NIST20.L
 TIC Integration Parameters: LSCINT.P

 Peak Number 7 Formamide, N,N-dimethyl- Concentration Rank 12

R.T.	EstConc	Area	Relative to ISTD	R.T.
4.152	14.99 ng/ul	184255	1,4-Dichlorobenzene-d4	7.894

Hit#	of	5	Tentative ID	MW	MolForm	CAS#	Qual
1			Formamide, N,N-dimethyl-	73	C3H7NO	000068-12-2	86
2			Formamide, N,N-dimethyl-	73	C3H7NO	000068-12-2	80
3			Formamide, N,N-dimethyl-	73	C3H7NO	000068-12-2	72
4			Formamide, N,N-dimethyl-	73	C3H7NO	000068-12-2	72
5			Glycinamide, N(2)-methyl-	88	C3H8N2O	1000452-55-9	56



Data Path : Z:\svoasrv\HPCHEM1\BNA_G\Data\BG071823\
 Data File : BG058341.D
 Acq On : 20 Jul 2023 00:20
 Operator : CG/JU
 Sample : 03452-16
 Misc :
 ALS Vial : 13 Sample Multiplier: 1

Instrument :
 BNA_G
 ClientSampleId :
 A46P8

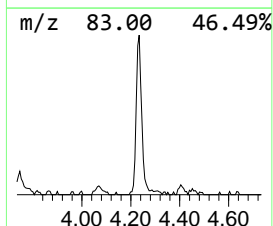
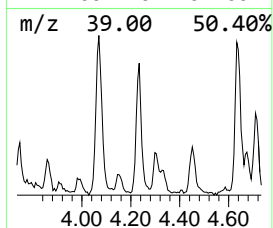
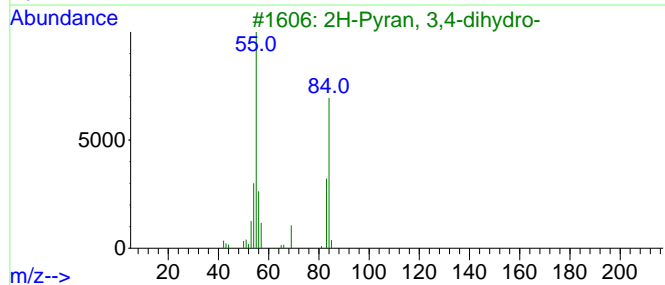
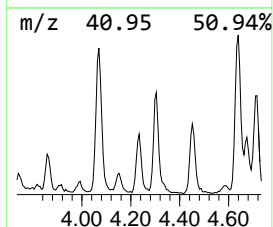
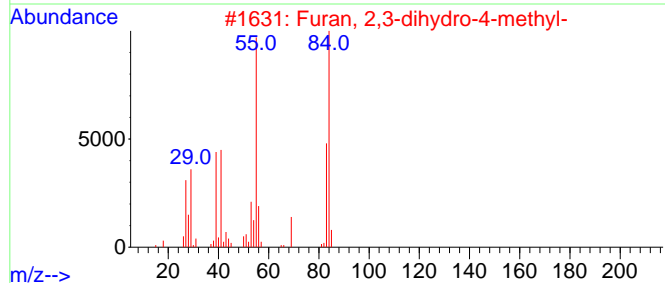
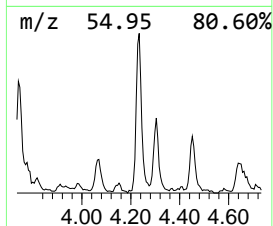
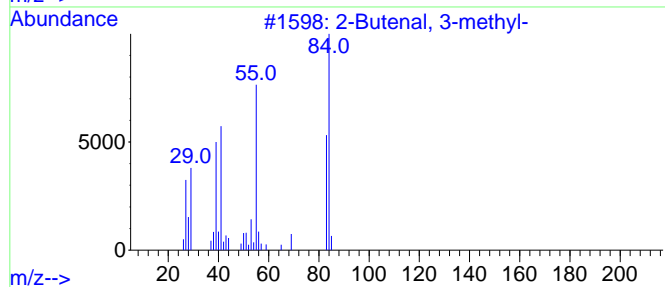
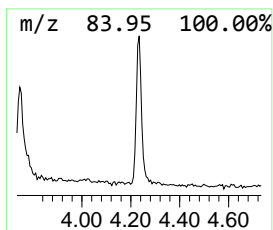
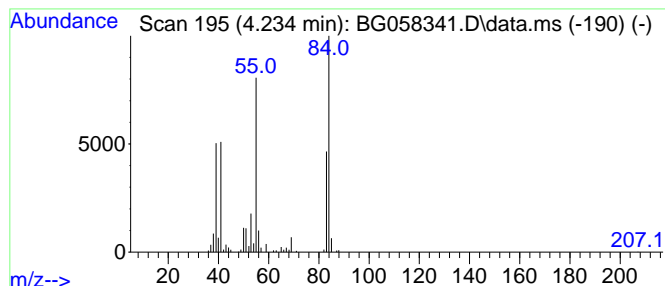
Quant Method : Z:\svoasrv\HPCHEM1\BNA_G\Methods\SFAM-EPA-BG071723.MA.M
 Quant Title : SVOA CALIBRATION

TIC Library : C:\DATABASE\NIST20.L
 TIC Integration Parameters: LSCINT.P

 Peak Number 8 2-Butenal, 3-methyl- Concentration Rank 13

R.T.	EstConc	Area	Relative to ISTD	R.T.
4.234	13.26 ng/ul	163005	1,4-Dichlorobenzene-d4	7.894

Hit#	of	5	Tentative ID	MW	MolForm	CAS#	Qual
1			2-Butenal, 3-methyl-	84	C5H8O	000107-86-8	91
2			Furan, 2,3-dihydro-4-methyl-	84	C5H8O	034314-83-5	86
3			2H-Pyran, 3,4-dihydro-	84	C5H8O	000110-87-2	72
4			2H-Pyran, 3,4-dihydro-	84	C5H8O	000110-87-2	53
5			2-Butenal, 2-methyl-, (E)-	84	C5H8O	000497-03-0	53



Data Path : Z:\svoasrv\HPCHEM1\BNA_G\Data\BG071823\
 Data File : BG058341.D
 Acq On : 20 Jul 2023 00:20
 Operator : CG/JU
 Sample : 03452-16
 Misc :
 ALS Vial : 13 Sample Multiplier: 1

Instrument :
 BNA_G
 ClientSampleId :
 A46P8

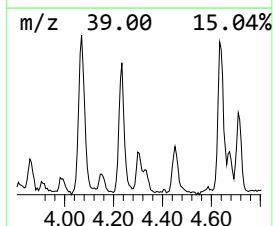
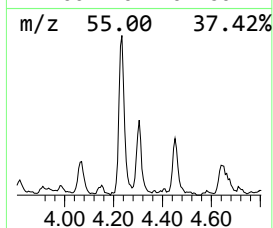
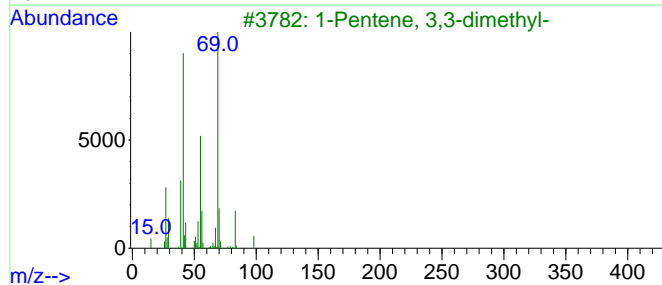
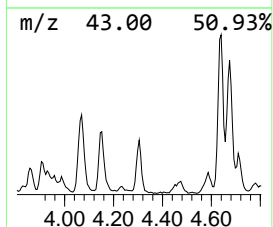
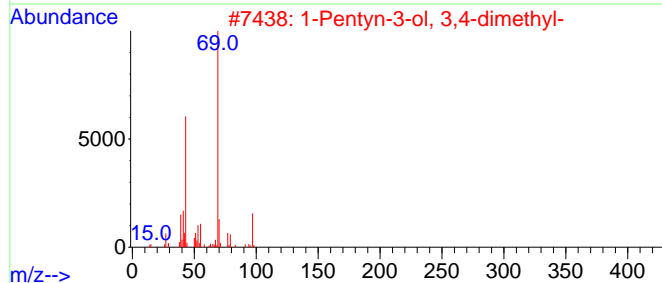
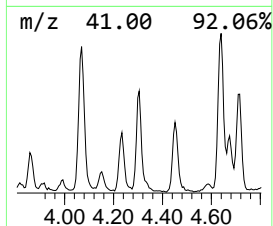
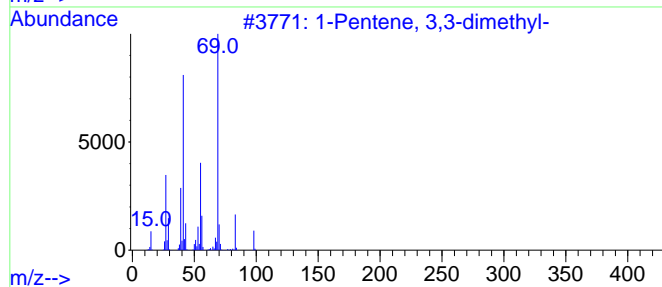
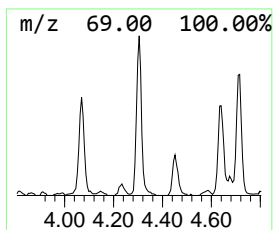
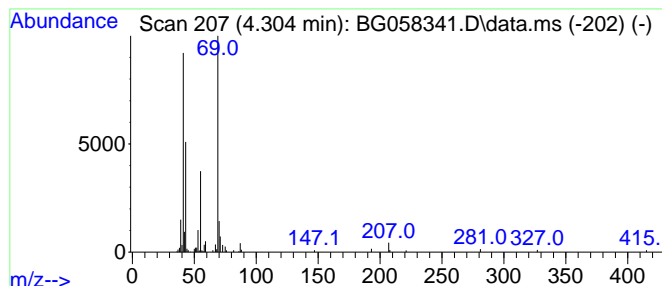
Quant Method : Z:\svoasrv\HPCHEM1\BNA_G\Methods\SFAM-EPA-BG071723.MA.M
 Quant Title : SVOA CALIBRATION

TIC Library : C:\DATABASE\NIST20.L
 TIC Integration Parameters: LSCINT.P

 Peak Number 9 (DEL) Alkane: Straight-Chai... Concentration Rank 14

R.T.	EstConc	Area	Relative to ISTD	R.T.
4.304	12.52 ng/ul	153949	1,4-Dichlorobenzene-d4	7.894

Hit#	of 5	Tentative ID	MW	MolForm	CAS#	Qual
1		1-Pentene, 3,3-dimethyl-	98	C7H14	003404-73-7	50
2		1-Pentyn-3-ol, 3,4-dimethyl-	112	C7H12O	001482-15-1	39
3		1-Pentene, 3,3-dimethyl-	98	C7H14	003404-73-7	39
4		4-Trifluoroacetoxystyrene	226	C10H17F3O2	116465-17-9	38
5		1-Pentene, 2,3-dimethyl-	98	C7H14	003404-72-6	36



Data Path : Z:\svoasrv\HPCHEM1\BNA_G\Data\BG071823\
 Data File : BG058341.D
 Acq On : 20 Jul 2023 00:20
 Operator : CG/JU
 Sample : 03452-16
 Misc :
 ALS Vial : 13 Sample Multiplier: 1

Instrument :
 BNA_G
 ClientSampleId :
 A46P8

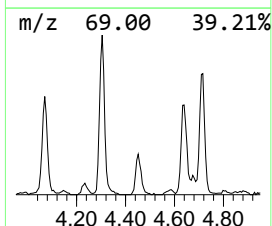
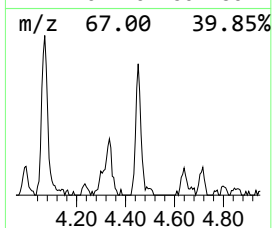
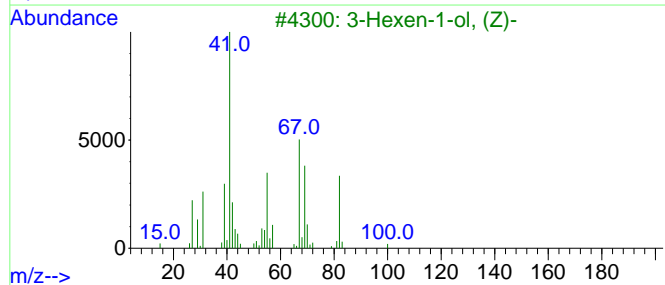
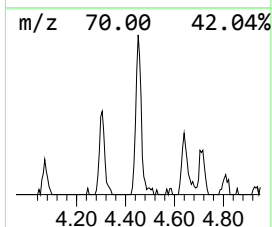
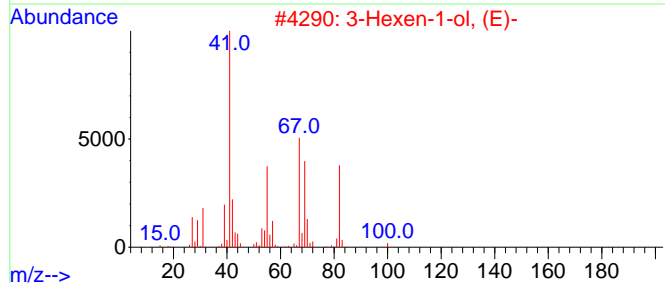
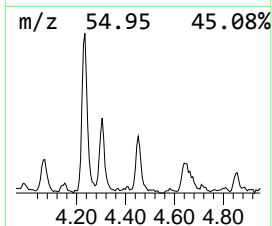
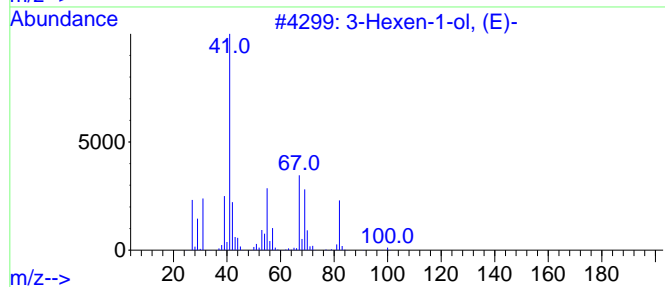
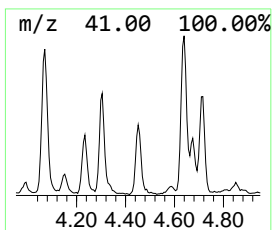
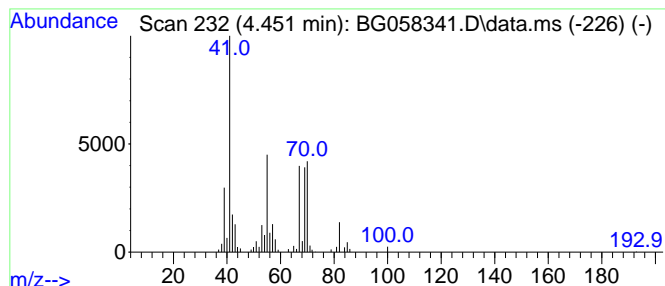
Quant Method : Z:\svoasrv\HPCHEM1\BNA_G\Methods\SFAM-EPA-BG071723.MA.M
 Quant Title : SVOA CALIBRATION

TIC Library : C:\DATABASE\NIST20.L
 TIC Integration Parameters: LSCINT.P

 Peak Number 10 3-Hexen-1-ol, (E)- Concentration Rank 18

R.T.	EstConc	Area	Relative to ISTD	R.T.
4.451	8.42 ng/ul	103535	1,4-Dichlorobenzene-d4	7.894

Hit#	of	5	Tentative ID	MW	MolForm	CAS#	Qual
1			3-Hexen-1-ol, (E)-	100	C6H12O	000928-97-2	58
2			3-Hexen-1-ol, (E)-	100	C6H12O	000928-97-2	52
3			3-Hexen-1-ol, (Z)-	100	C6H12O	000928-96-1	46
4			1,5-Pentanediol, 3-methyl-	118	C6H14O2	004457-71-0	33
5			3-Hexen-1-ol, (Z)-	100	C6H12O	000928-96-1	28



Data Path : Z:\svoasrv\HPCHEM1\BNA_G\Data\BG071823\
 Data File : BG058341.D
 Acq On : 20 Jul 2023 00:20
 Operator : CG/JU
 Sample : 03452-16
 Misc :
 ALS Vial : 13 Sample Multiplier: 1

Instrument :
 BNA_G
 ClientSampleId :
 A46P8

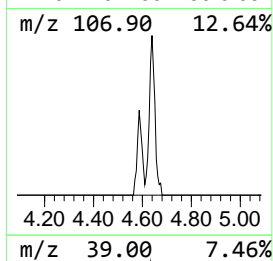
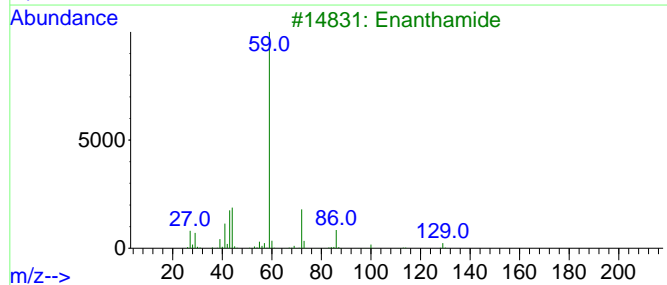
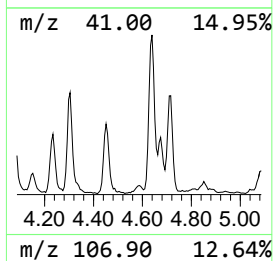
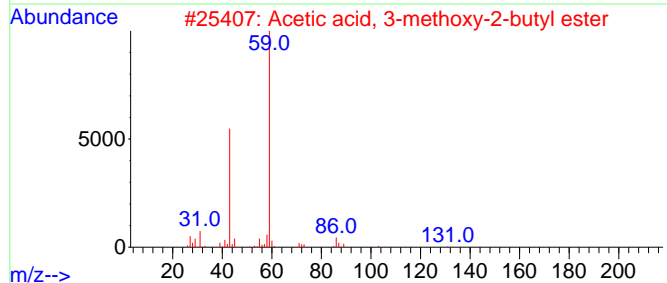
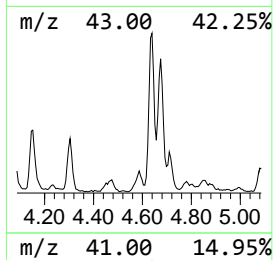
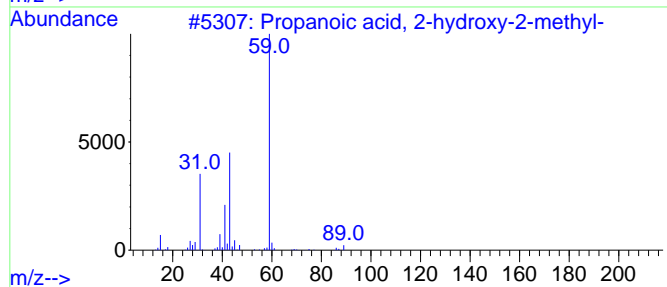
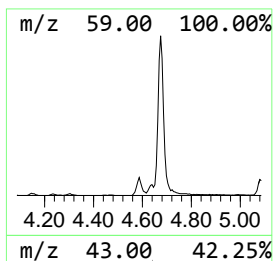
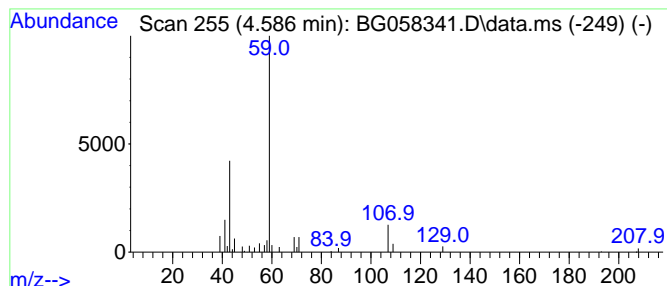
Quant Method : Z:\svoasrv\HPCHEM1\BNA_G\Methods\SFAM-EPA-BG071723.MA.M
 Quant Title : SVOA CALIBRATION

TIC Library : C:\DATABASE\NIST20.L
 TIC Integration Parameters: LSCINT.P

 Peak Number 11 Propanoic acid, 2-hydroxy-2... Concentration Rank 35

R.T.	EstConc	Area	Relative to ISTD	R.T.
4.586	3.40 ng/ul	41807	1,4-Dichlorobenzene-d4	7.894

Hit#	of	5	Tentative ID	MW	MolForm	CAS#	Qual
1			Propanoic acid, 2-hydroxy-2-methyl-	104	C4H8O3	000594-61-6	53
2			Acetic acid, 3-methoxy-2-butyl e...	146	C7H14O3	1000151-29-7	45
3			Enanthamide	129	C7H15NO	000628-62-6	45
4			6-Methylheptane-1,6-diol	146	C8H18O2	005392-57-4	45
5			4-O-Acetyl-2,5-di-O-methyl-3,6-d...	215	C10H17NO4	1010101-80-3	42



Data Path : Z:\svoasrv\HPCHEM1\BNA_G\Data\BG071823\
 Data File : BG058341.D
 Acq On : 20 Jul 2023 00:20
 Operator : CG/JU
 Sample : 03452-16
 Misc :
 ALS Vial : 13 Sample Multiplier: 1

Instrument :
 BNA_G
 ClientSampleId :
 A46P8

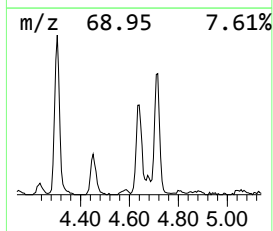
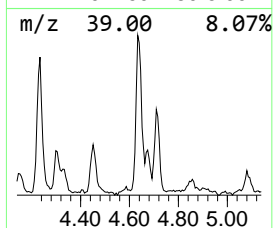
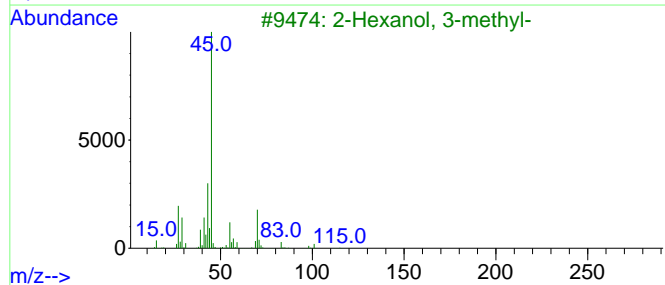
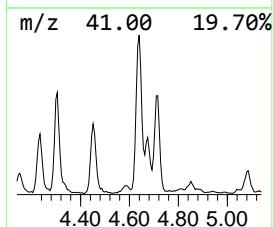
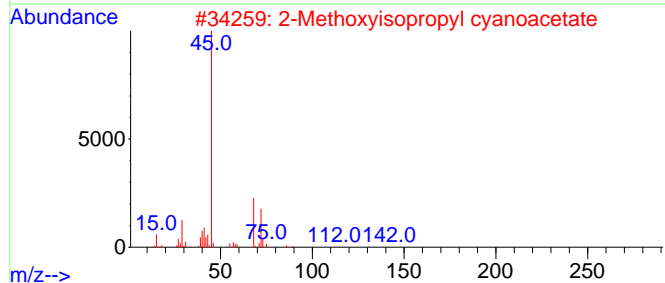
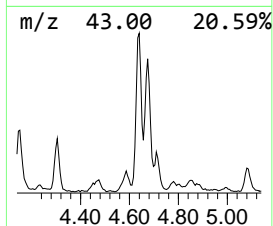
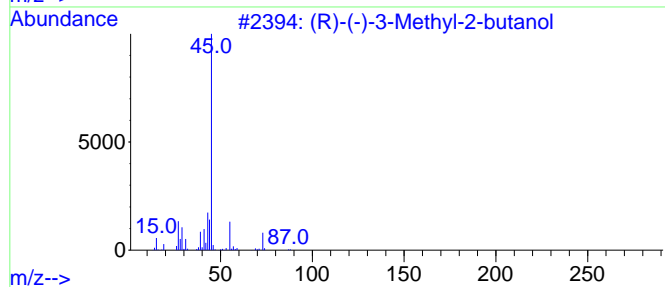
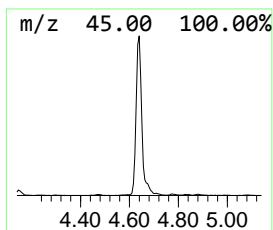
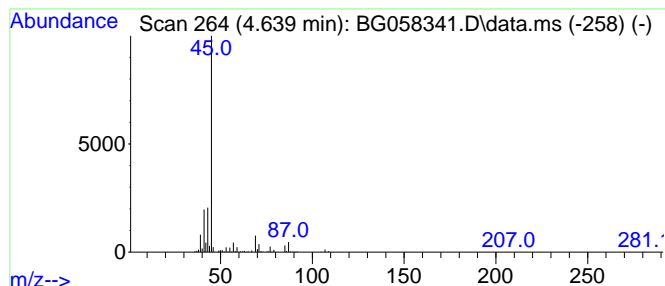
Quant Method : Z:\svoasrv\HPCHEM1\BNA_G\Methods\SFAM-EPA-BG071723.MA.M
 Quant Title : SVOA CALIBRATION

TIC Library : C:\DATABASE\NIST20.L
 TIC Integration Parameters: LSCINT.P

 Peak Number 12 unknown-04 Concentration Rank 5

R.T.	EstConc	Area	Relative to ISTD	R.T.
4.639	43.16 ng/ul	530492	1,4-Dichlorobenzene-d4	7.894

Hit#	of	5	Tentative ID	MW	MolForm	CAS#	Qual
1	(R)-(-)-3-Methyl-2-butanol			88	C5H12O	001572-93-6	45
2	2-Methoxyisopropyl cyanoacetate			157	C7H11NO3	032804-79-8	40
3	2-Hexanol, 3-methyl-			116	C7H16O	002313-65-7	40
4	2-Pentanol, 3-methyl-			102	C6H14O	000565-60-6	40
5	2-Pentanol, 3-methyl-			102	C6H14O	000565-60-6	40



Data Path : Z:\svoasrv\HPCHEM1\BNA_G\Data\BG071823\
 Data File : BG058341.D
 Acq On : 20 Jul 2023 00:20
 Operator : CG/JU
 Sample : 03452-16
 Misc :
 ALS Vial : 13 Sample Multiplier: 1

Instrument :
 BNA_G
 ClientSampleId :
 A46P8

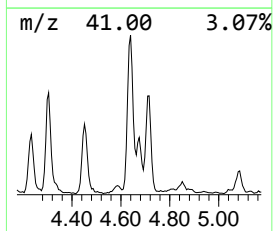
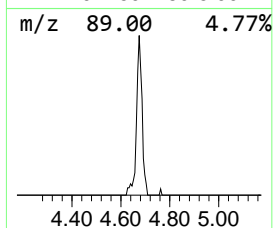
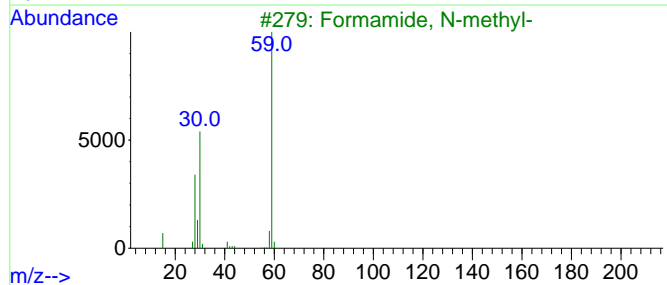
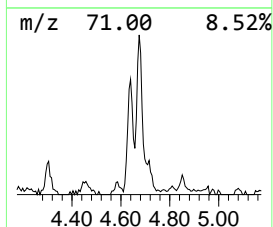
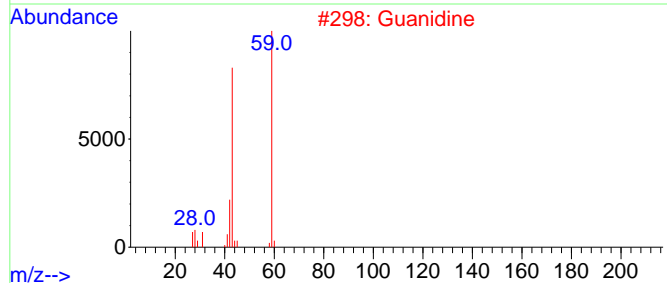
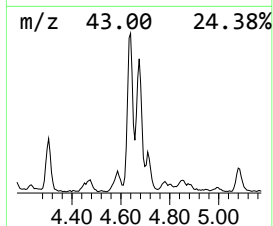
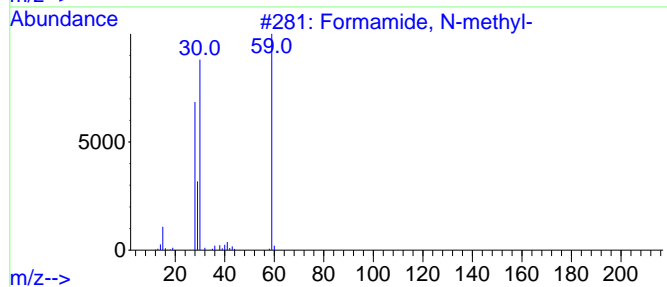
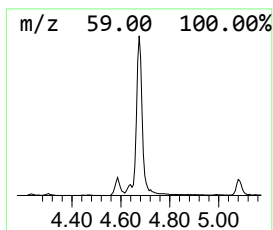
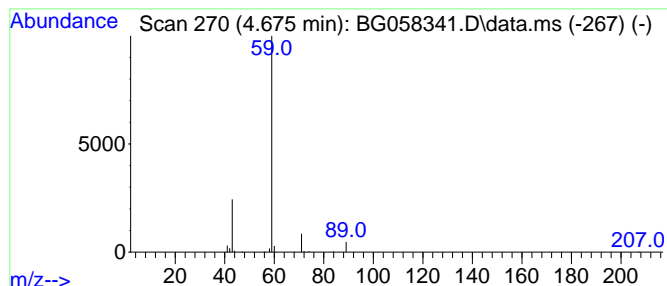
Quant Method : Z:\svoasrv\HPCHEM1\BNA_G\Methods\SFAM-EPA-BG071723.MA.M
 Quant Title : SVOA CALIBRATION

TIC Library : C:\DATABASE\NIST20.L
 TIC Integration Parameters: LSCINT.P

 Peak Number 13 unknown-05 Concentration Rank 9

R.T.	EstConc	Area	Relative to ISTD	R.T.
4.675	21.22 ng/ul	260839	1,4-Dichlorobenzene-d4	7.894

Hit#	of	5	Tentative ID	MW	MolForm	CAS#	Qual
1			Formamide, N-methyl-	59	C2H5NO	000123-39-7	7
2			Guanidine	59	CH5N3	000113-00-8	5
3			Formamide, N-methyl-	59	C2H5NO	000123-39-7	4
4			Acetaldoxime	59	C2H5NO	000107-29-9	4
5			Hydrazine, 2-ethyl-1,1-dimethyl-	88	C4H12N2	029559-82-8	4



Data Path : Z:\svoasrv\HPCHEM1\BNA_G\Data\BG071823\
 Data File : BG058341.D
 Acq On : 20 Jul 2023 00:20
 Operator : CG/JU
 Sample : 03452-16
 Misc :
 ALS Vial : 13 Sample Multiplier: 1

Instrument :
 BNA_G
 ClientSampleId :
 A46P8

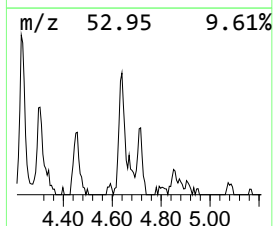
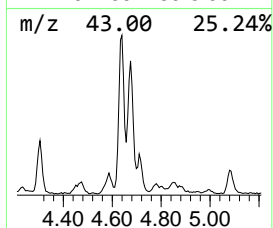
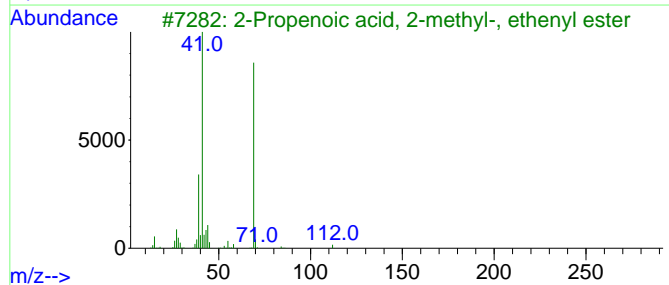
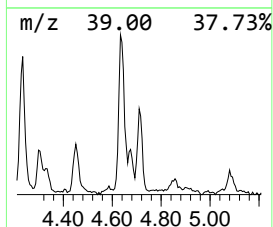
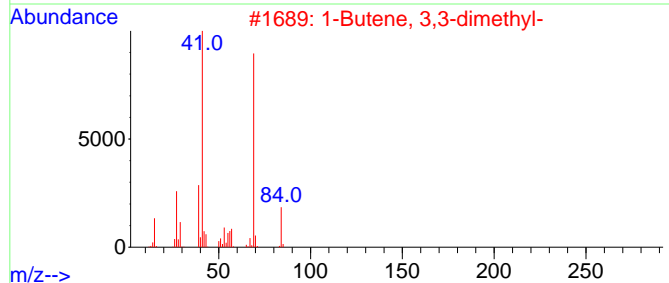
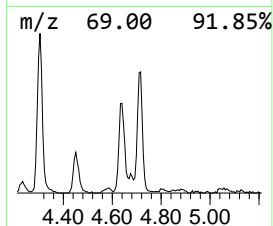
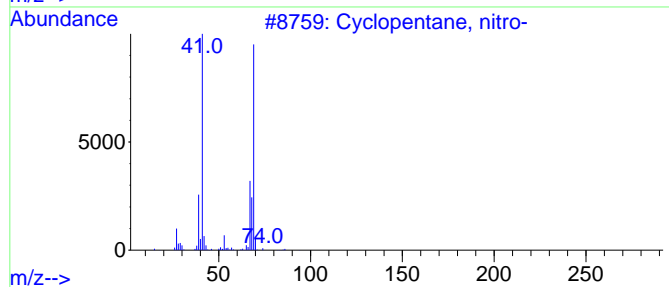
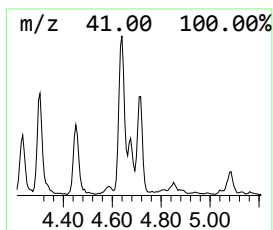
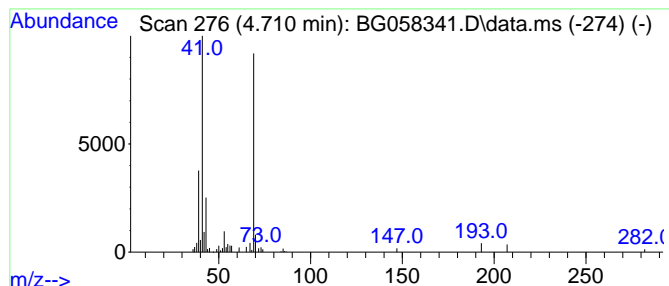
Quant Method : Z:\svoasrv\HPCHEM1\BNA_G\Methods\SFAM-EPA-BG071723.MA.M
 Quant Title : SVOA CALIBRATION

TIC Library : C:\DATABASE\NIST20.L
 TIC Integration Parameters: LSCINT.P

 Peak Number 14 Cyclopentane, nitro- Concentration Rank 19

R.T.	EstConc	Area	Relative to ISTD	R.T.
4.710	7.96 ng/ul	97860	1,4-Dichlorobenzene-d4	7.894

Hit#	of	5	Tentative ID	MW	MolForm	CAS#	Qual
1			Cyclopentane, nitro-	115	C5H9NO2	002562-38-1	56
2			1-Butene, 3,3-dimethyl-	84	C6H12	000558-37-2	56
3			2-Propenoic acid, 2-methyl-, eth...	112	C6H8O2	004245-37-8	50
4			2-Butene, 1-bromo-3-methyl-	148	C5H9Br	000870-63-3	50
5			2-Butene, 1-bromo-3-methyl-	148	C5H9Br	000870-63-3	50



Data Path : Z:\svoasrv\HPCHEM1\BNA_G\Data\BG071823\
 Data File : BG058341.D
 Acq On : 20 Jul 2023 00:20
 Operator : CG/JU
 Sample : 03452-16
 Misc :
 ALS Vial : 13 Sample Multiplier: 1

Instrument :
 BNA_G
 ClientSampleId :
 A46P8

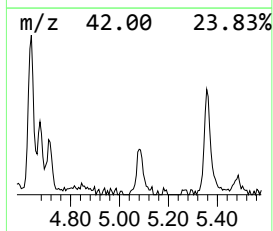
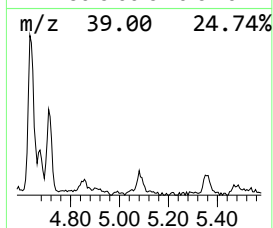
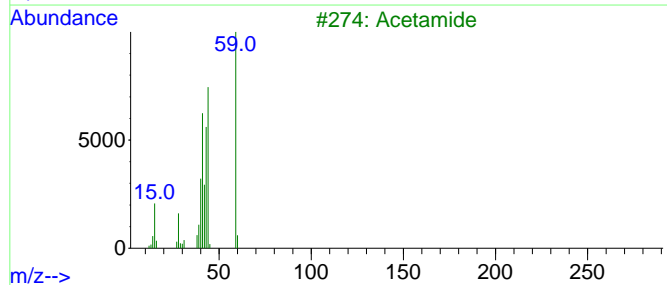
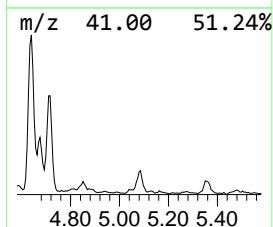
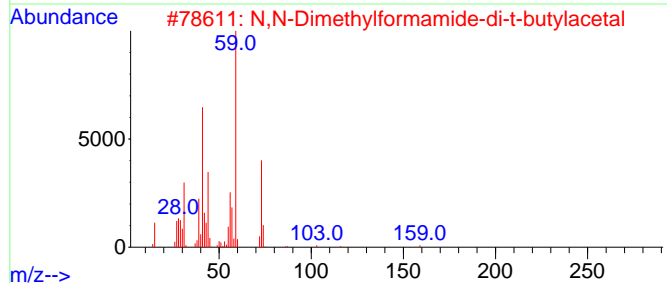
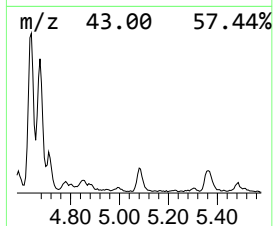
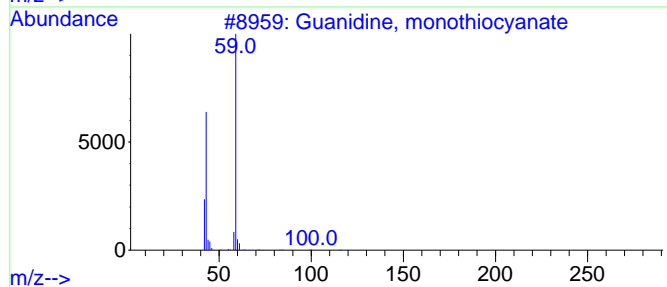
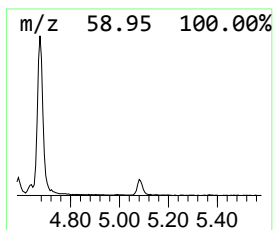
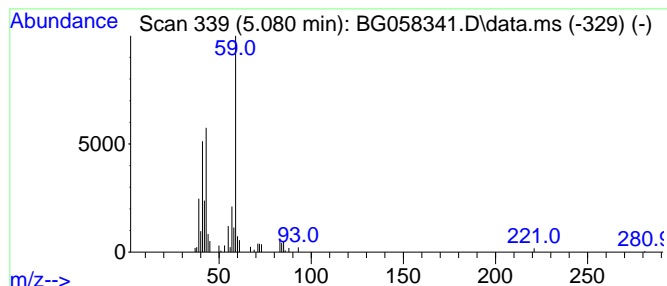
Quant Method : Z:\svoasrv\HPCHEM1\BNA_G\Methods\SFAM-EPA-BG071723.MA.M
 Quant Title : SVOA CALIBRATION

TIC Library : C:\DATABASE\NIST20.L
 TIC Integration Parameters: LSCINT.P

 Peak Number 15 Guanidine, monothiocyanate Concentration Rank 26

R.T.	EstConc	Area	Relative to ISTD	R.T.
5.080	4.83 ng/ul	59341	1,4-Dichlorobenzene-d4	7.894

Hit#	of	5	Tentative ID	MW	MolForm	CAS#	Qual
1			Guanidine, monothiocyanate	116	C2H4N4S	056960-89-5	56
2			N,N-Dimethylformamide-di-t-butyl...	203	C11H25NO2	036805-97-7	53
3			Acetamide	59	C2H5NO	000060-35-5	53
4			(3,3-Dimethyloxiranyl)methanol	102	C5H10O2	1010306-71-7	50
5			Silane, dimethyl-	60	C2H8Si	001111-74-6	45



Data Path : Z:\svoasrv\HPCHEM1\BNA_G\Data\BG071823\
 Data File : BG058341.D
 Acq On : 20 Jul 2023 00:20
 Operator : CG/JU
 Sample : 03452-16
 Misc :
 ALS Vial : 13 Sample Multiplier: 1

Instrument :
 BNA_G
 ClientSampleId :
 A46P8

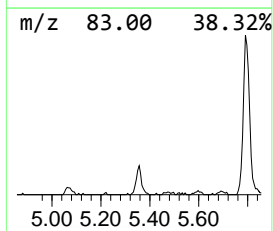
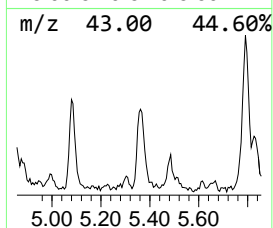
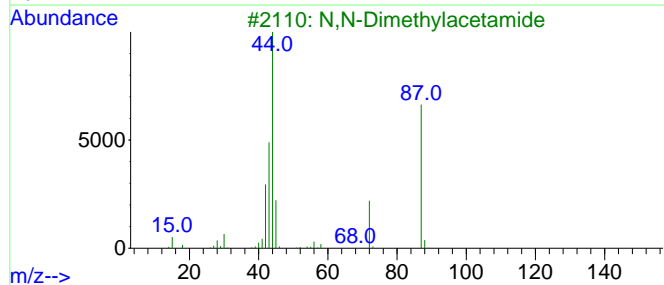
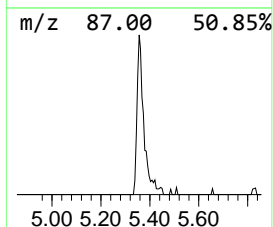
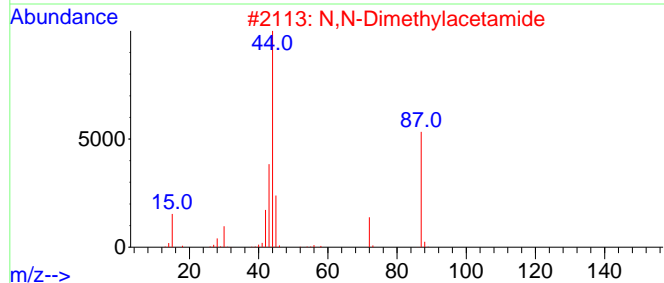
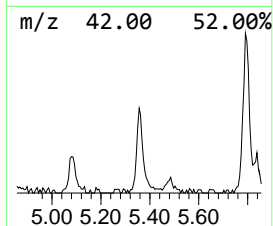
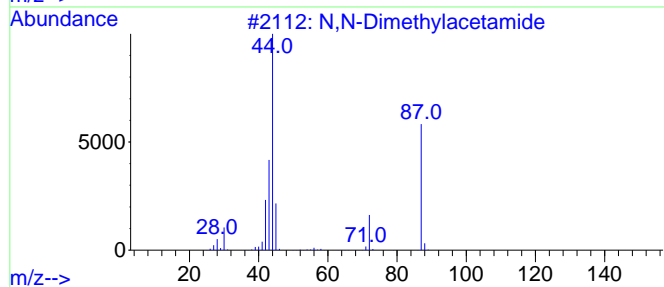
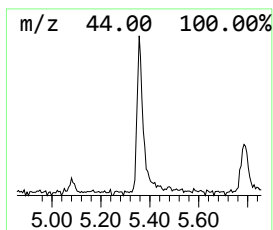
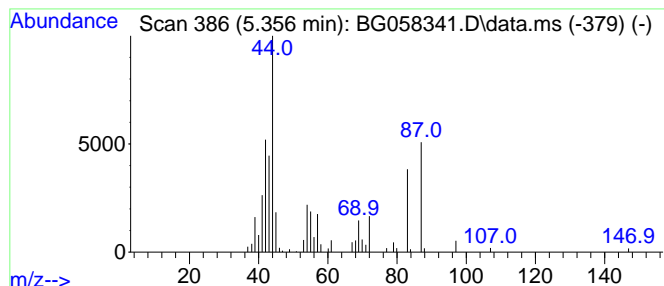
Quant Method : Z:\svoasrv\HPCHEM1\BNA_G\Methods\SFAM-EPA-BG071723.MA.M
 Quant Title : SVOA CALIBRATION

TIC Library : C:\DATABASE\NIST20.L
 TIC Integration Parameters: LSCINT.P

 Peak Number 16 unknown-06 Concentration Rank 22

R.T.	EstConc	Area	Relative to ISTD	R.T.
5.356	7.12 ng/ul	87518	1,4-Dichlorobenzene-d4	7.894

Hit#	of	5	Tentative ID	MW	MolForm	CAS#	Qual
1			N,N-Dimethylacetamide	87	C4H9NO	000127-19-5	43
2			N,N-Dimethylacetamide	87	C4H9NO	000127-19-5	38
3			N,N-Dimethylacetamide	87	C4H9NO	000127-19-5	37
4			Formamide, N,N-bis(2-cyanoethyl)-	151	C7H9N3O	003445-84-9	12
5			1-Propanamine, N1-methyl-2-methoxy	103	C5H13NO	1000198-01-0	12



Data Path : Z:\svoasrv\HPCHEM1\BNA_G\Data\BG071823\
 Data File : BG058341.D
 Acq On : 20 Jul 2023 00:20
 Operator : CG/JU
 Sample : 03452-16
 Misc :
 ALS Vial : 13 Sample Multiplier: 1

Instrument :
 BNA_G
 ClientSampleId :
 A46P8

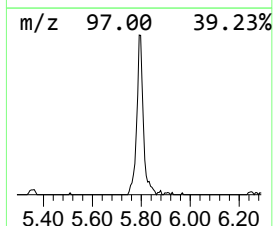
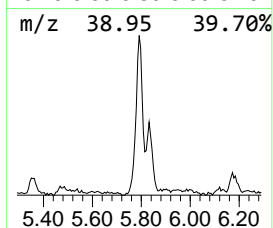
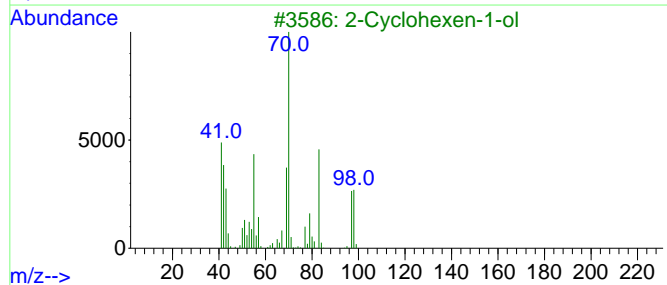
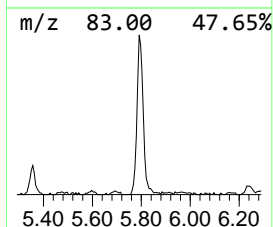
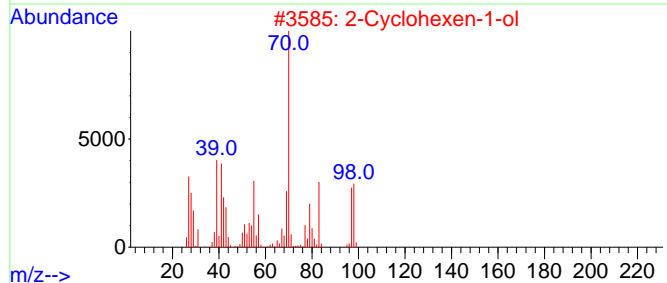
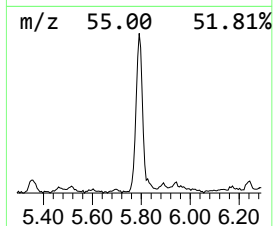
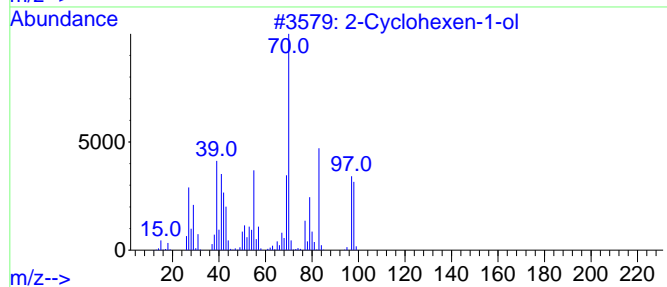
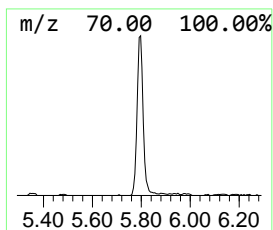
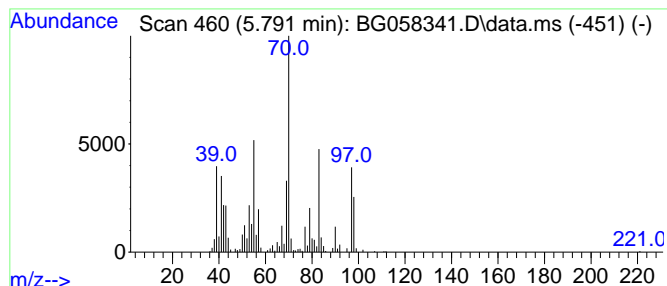
Quant Method : Z:\svoasrv\HPCHEM1\BNA_G\Methods\SFAM-EPA-BG071723.MA.M
 Quant Title : SVOA CALIBRATION

TIC Library : C:\DATABASE\NIST20.L
 TIC Integration Parameters: LSCINT.P

 Peak Number 17 2-Cyclohexen-1-ol Concentration Rank 6

R.T.	EstConc	Area	Relative to ISTD	R.T.
5.791	42.05 ng/ul	516918	1,4-Dichlorobenzene-d4	7.894

Hit#	of	5	Tentative ID	MW	MolForm	CAS#	Qual
1			2-Cyclohexen-1-ol	98	C6H10O	000822-67-3	93
2			2-Cyclohexen-1-ol	98	C6H10O	000822-67-3	76
3			2-Cyclohexen-1-ol	98	C6H10O	000822-67-3	76
4			2-Methylene cyclopentanol	98	C6H10O	020461-31-8	64
5			2-Cyclohexen-1-ol	98	C6H10O	000822-67-3	50



Data Path : Z:\svoasrv\HPCHEM1\BNA_G\Data\BG071823\
 Data File : BG058341.D
 Acq On : 20 Jul 2023 00:20
 Operator : CG/JU
 Sample : 03452-16
 Misc :
 ALS Vial : 13 Sample Multiplier: 1

Instrument :
 BNA_G
 ClientSampleId :
 A46P8

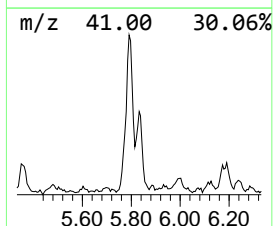
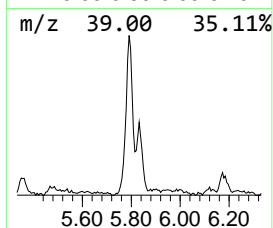
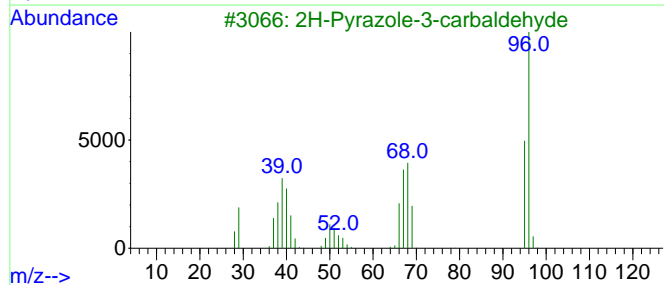
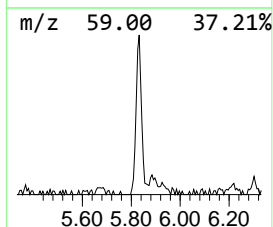
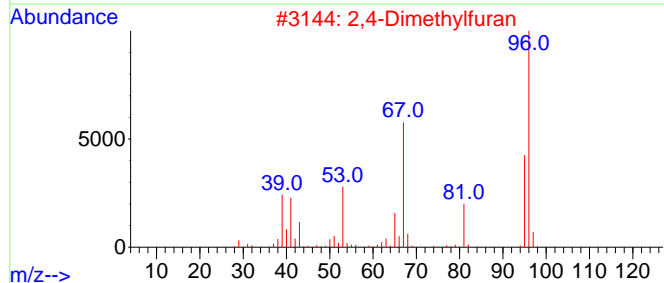
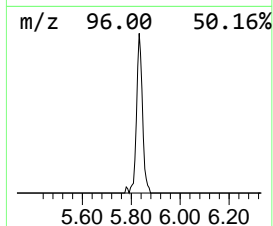
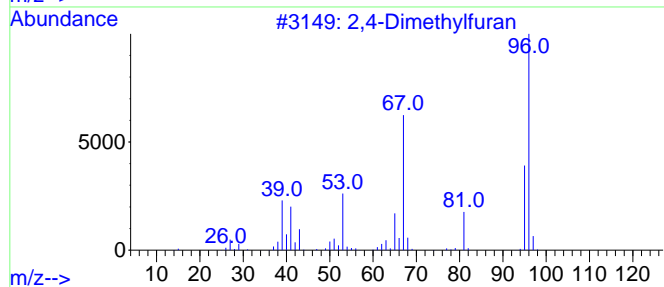
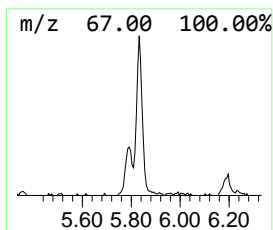
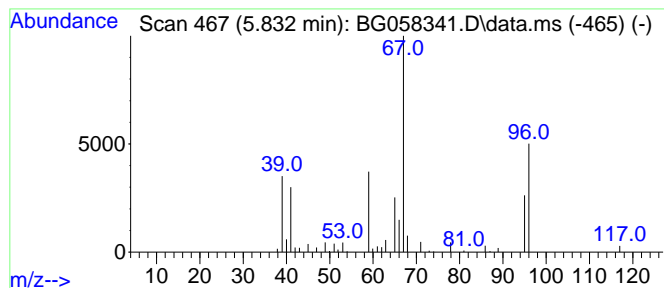
Quant Method : Z:\svoasrv\HPCHEM1\BNA_G\Methods\SFAM-EPA-BG071723.MA.M
 Quant Title : SVOA CALIBRATION

TIC Library : C:\DATABASE\NIST20.L
 TIC Integration Parameters: LSCINT.P

 Peak Number 18 2,4-Dimethylfuran Concentration Rank 17

R.T.	EstConc	Area	Relative to ISTD	R.T.
5.832	8.80 ng/ul	108185	1,4-Dichlorobenzene-d4	7.894

Hit#	of	5	Tentative ID	MW	MolForm	CAS#	Qual
1			2,4-Dimethylfuran	96	C6H8O	003710-43-8	64
2			2,4-Dimethylfuran	96	C6H8O	003710-43-8	64
3			2H-Pyrazole-3-carbaldehyde	96	C4H4N2O	003920-50-1	32
4			1H-Pyrazole, 1,5-dimethyl-	96	C5H8N2	000694-31-5	10
5			1H-Imidazole, 4,5-dimethyl-	96	C5H8N2	002302-39-8	9



Data Path : Z:\svoasrv\HPCHEM1\BNA_G\Data\BG071823\
 Data File : BG058341.D
 Acq On : 20 Jul 2023 00:20
 Operator : CG/JU
 Sample : 03452-16
 Misc :
 ALS Vial : 13 Sample Multiplier: 1

Instrument :
 BNA_G
 ClientSampleId :
 A46P8

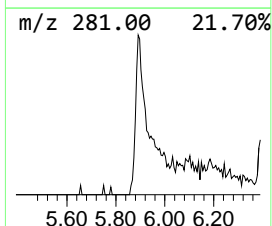
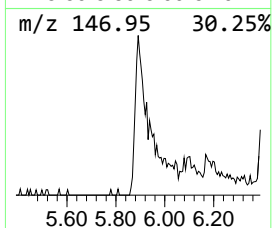
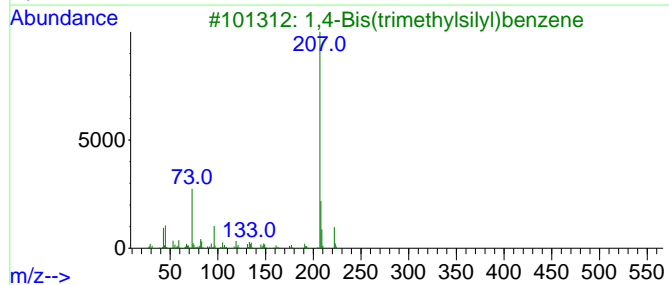
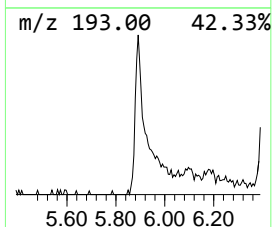
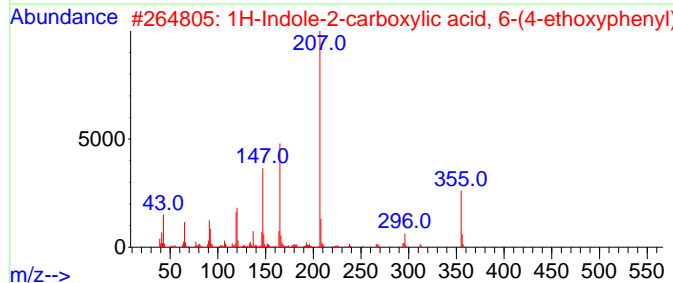
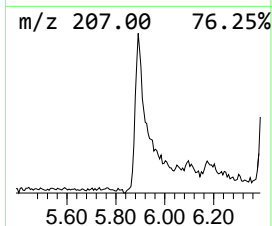
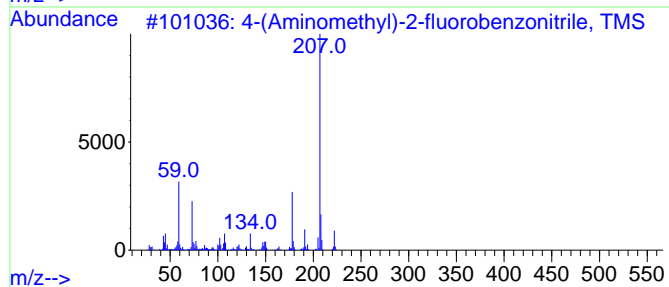
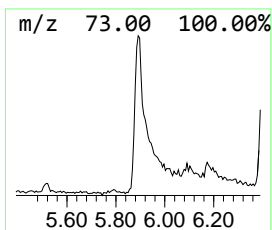
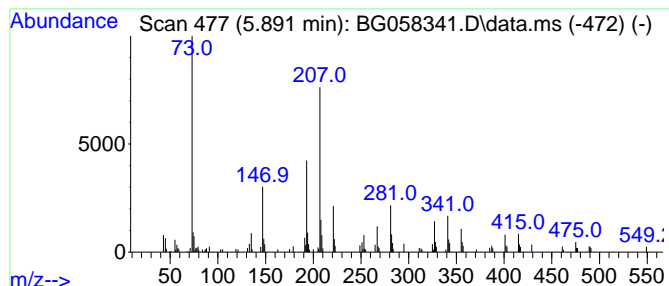
Quant Method : Z:\svoasrv\HPCHEM1\BNA_G\Methods\SFAM-EPA-BG071723.MA.M
 Quant Title : SVOA CALIBRATION

TIC Library : C:\DATABASE\NIST20.L
 TIC Integration Parameters: LSCINT.P

 Peak Number 19 unknown-07 Concentration Rank 8

R.T.	EstConc	Area	Relative to ISTD	R.T.
5.891	24.66 ng/ul	303175	1,4-Dichlorobenzene-d4	7.894

Hit#	of 5	Tentative ID	MW	MolForm	CAS#	Qual
1		4-(Aminomethyl)-2-fluorobenzonit...	222	C11H15FN2Si	1000507-41-3	38
2		1H-Indole-2-carboxylic acid, 6-(...	355	C21H25NO4	1010316-17-5	38
3		1,4-Bis(trimethylsilyl)benzene	222	C12H22Si2	013183-70-5	38
4		1,2-Bis(trimethylsilyl)benzene	222	C12H22Si2	017151-09-6	38
5		5-Methyl-2-phenylindolizine	207	C15H13N	036944-99-7	35



Data Path : Z:\svoasrv\HPCHEM1\BNA_G\Data\BG071823\
 Data File : BG058341.D
 Acq On : 20 Jul 2023 00:20
 Operator : CG/JU
 Sample : 03452-16
 Misc :
 ALS Vial : 13 Sample Multiplier: 1

Instrument :
 BNA_G
 ClientSampleId :
 A46P8

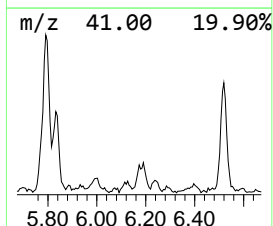
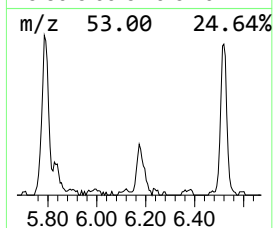
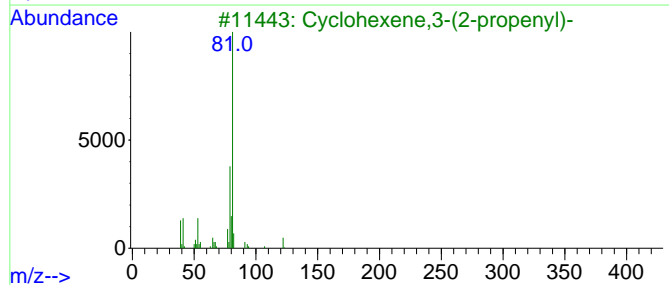
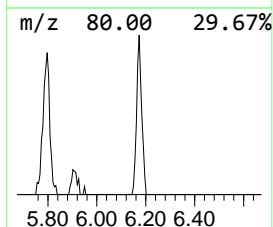
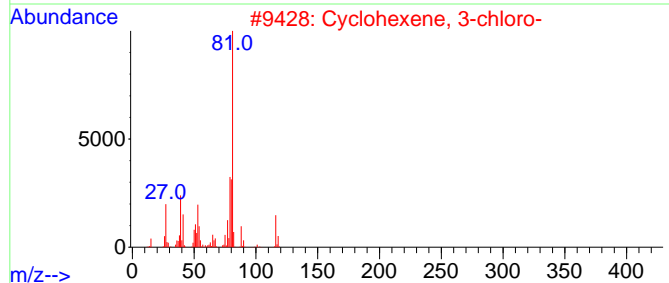
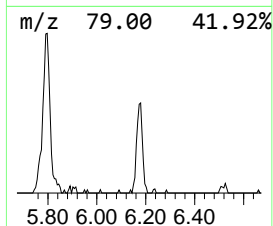
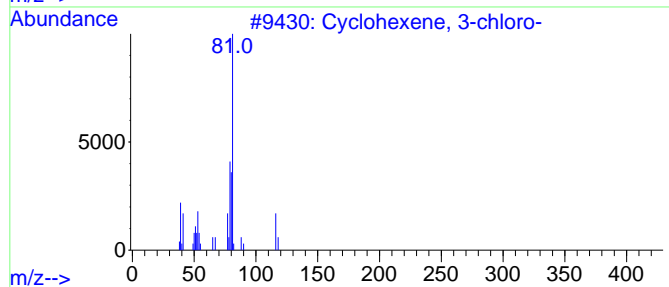
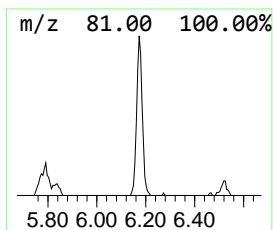
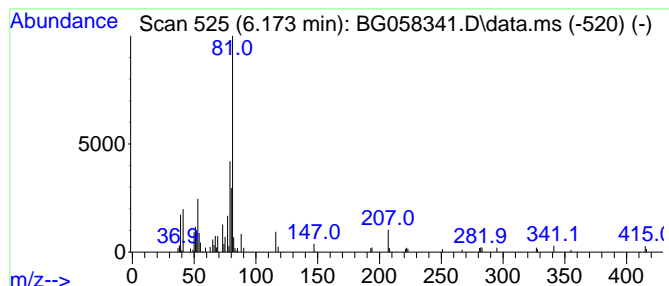
Quant Method : Z:\svoasrv\HPCHEM1\BNA_G\Methods\SFAM-EPA-BG071723.MA.M
 Quant Title : SVOA CALIBRATION

TIC Library : C:\DATABASE\NIST20.L
 TIC Integration Parameters: LSCINT.P

 Peak Number 20 Cyclohexene, 3-chloro- Concentration Rank 21

R.T.	EstConc	Area	Relative to ISTD	R.T.
6.173	7.35 ng/ul	90393	1,4-Dichlorobenzene-d4	7.894

Hit#	of 5	Tentative ID	MW	MolForm	CAS#	Qual
1		Cyclohexene, 3-chloro-	116	C6H9Cl	002441-97-6	91
2		Cyclohexene, 3-chloro-	116	C6H9Cl	002441-97-6	72
3		Cyclohexene,3-(2-propenyl)-	122	C9H14	015232-95-8	59
4		Ethanone, 1-(2-methyl-2-cyclopen...	124	C8H12O	001767-84-6	59
5		Cyclohexene, 3-bromo-	160	C6H9Br	001521-51-3	53



Data Path : Z:\svoasrv\HPCHEM1\BNA_G\Data\BG071823\
 Data File : BG058341.D
 Acq On : 20 Jul 2023 00:20
 Operator : CG/JU
 Sample : 03452-16
 Misc :
 ALS Vial : 13 Sample Multiplier: 1

Instrument :
 BNA_G
 ClientSampleId :
 A46P8

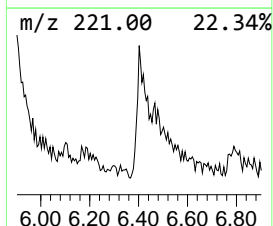
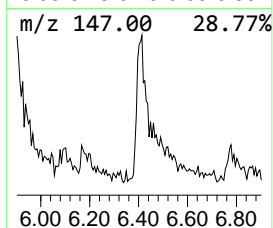
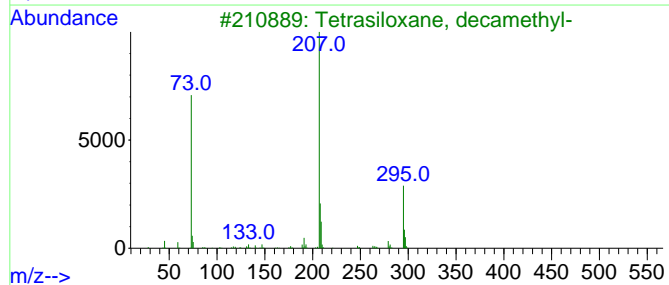
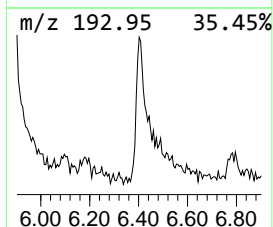
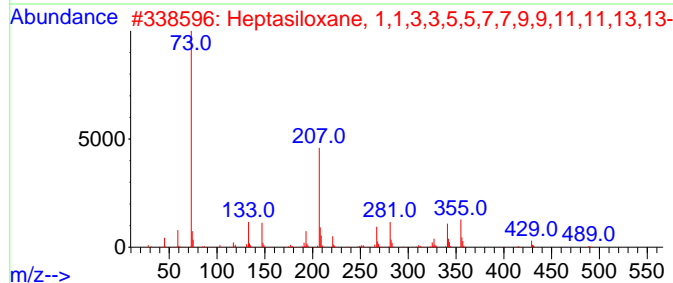
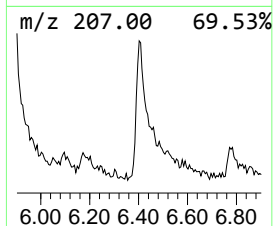
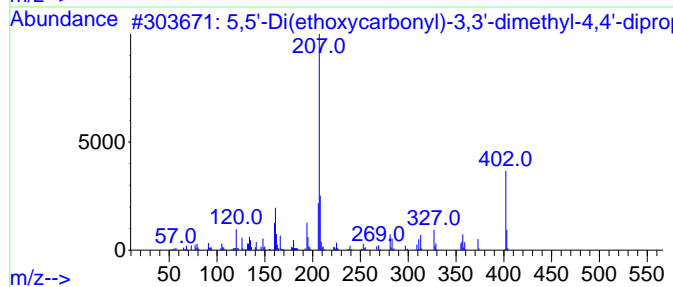
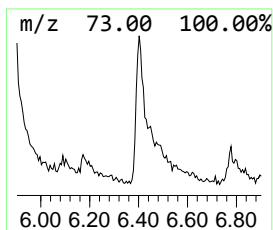
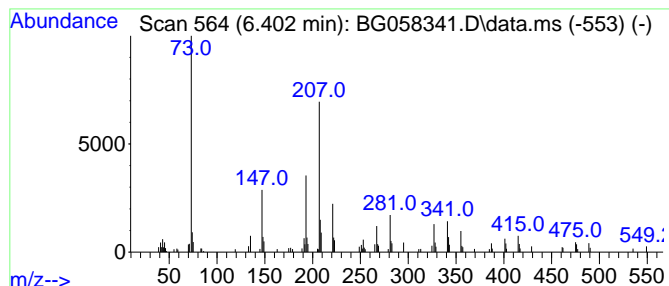
Quant Method : Z:\svoasrv\HPCHEM1\BNA_G\Methods\SFAM-EPA-BG071723.MA.M
 Quant Title : SVOA CALIBRATION

TIC Library : C:\DATABASE\NIST20.L
 TIC Integration Parameters: LSCINT.P

 Peak Number 21 unknown-08 Concentration Rank 11

R.T.	EstConc	Area	Relative to ISTD	R.T.
6.402	15.08 ng/ul	185408	1,4-Dichlorobenzene-d4	7.894

Hit#	of 5	Tentative ID	MW	MolForm	CAS#	Qual
1		5,5'-Di(ethoxycarbonyl)-3,3'-dim...	402	C23H34N2O4	102586-97-0	46
2		Heptasiloxane, 1,1,3,3,5,5,7,7,9...	504	C14H44O6Si7	019095-23-9	43
3		Tetrasiloxane, decamethyl-	310	C10H30O3Si4	000141-62-8	38
4		ethanone, 1-phenyl-2-(2-phenyl-4...	326	C23H18O2	1000402-36-9	38
5		4-(Aminomethyl)-2-fluorobenzonit...	222	C11H15FN2Si	1000507-41-3	38



Data Path : Z:\svoasrv\HPCHEM1\BNA_G\Data\BG071823\
 Data File : BG058341.D
 Acq On : 20 Jul 2023 00:20
 Operator : CG/JU
 Sample : 03452-16
 Misc :
 ALS Vial : 13 Sample Multiplier: 1

Instrument :
 BNA_G
 ClientSampleId :
 A46P8

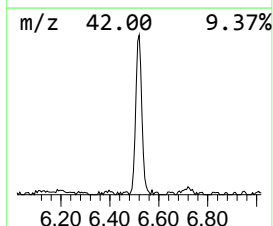
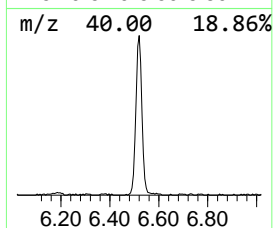
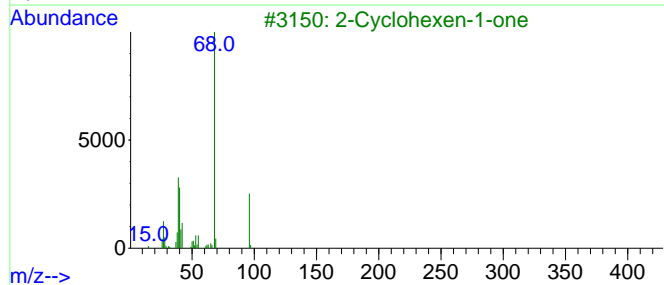
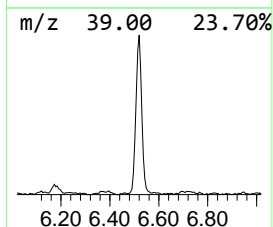
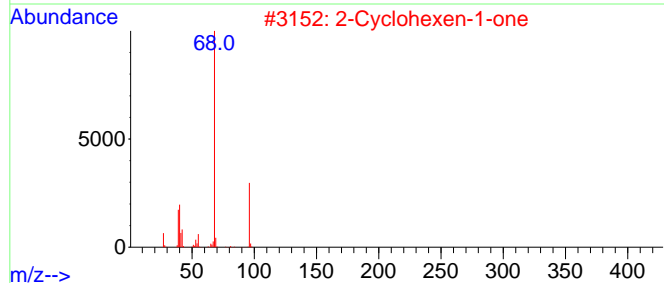
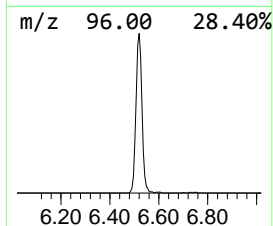
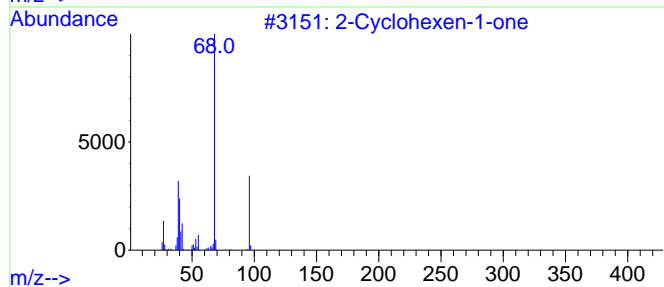
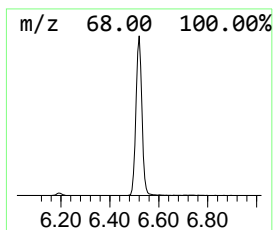
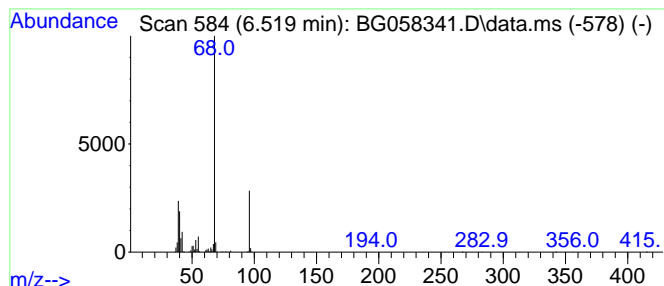
Quant Method : Z:\svoasrv\HPCHEM1\BNA_G\Methods\SFAM-EPA-BG071723.MA.M
 Quant Title : SVOA CALIBRATION

TIC Library : C:\DATABASE\NIST20.L
 TIC Integration Parameters: LSCINT.P

 Peak Number 22 2-Cyclohexen-1-one Concentration Rank 4

R.T.	EstConc	Area	Relative to ISTD	R.T.
6.519	49.15 ng/ul	604191	1,4-Dichlorobenzene-d4	7.894

Hit#	of	5	Tentative ID	MW	MolForm	CAS#	Qual
1			2-Cyclohexen-1-one	96	C6H8O	000930-68-7	91
2			2-Cyclohexen-1-one	96	C6H8O	000930-68-7	91
3			2-Cyclohexen-1-one	96	C6H8O	000930-68-7	91
4			2-Cyclohexen-1-one	96	C6H8O	000930-68-7	91
5			1,5-Cyclooctadien-4-one	122	C8H10O	001460-21-5	36



Data Path : Z:\svoasrv\HPCHEM1\BNA_G\Data\BG071823\
 Data File : BG058341.D
 Acq On : 20 Jul 2023 00:20
 Operator : CG/JU
 Sample : 03452-16
 Misc :
 ALS Vial : 13 Sample Multiplier: 1

Instrument :
 BNA_G
 ClientSampleId :
 A46P8

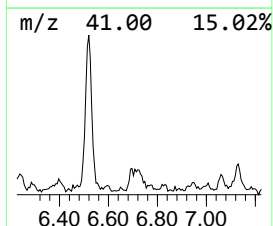
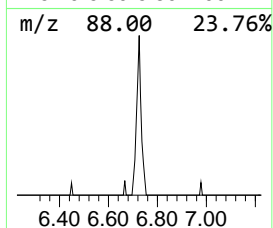
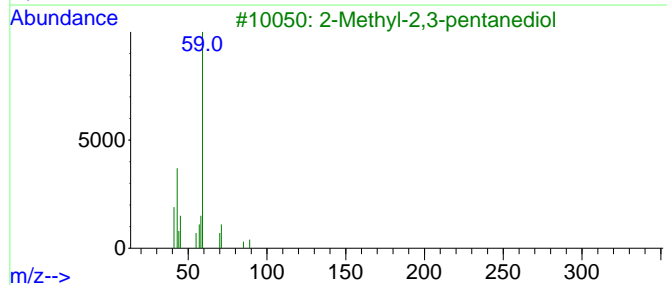
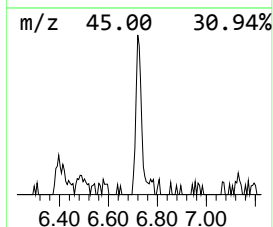
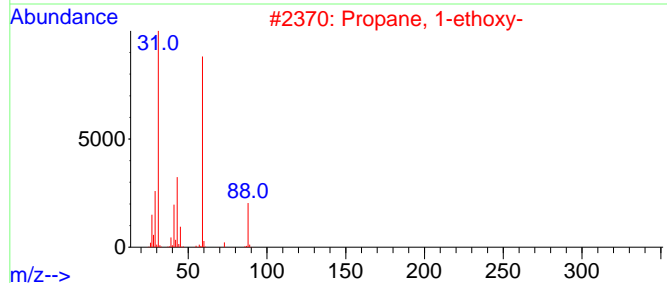
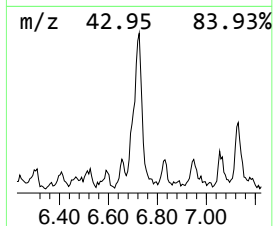
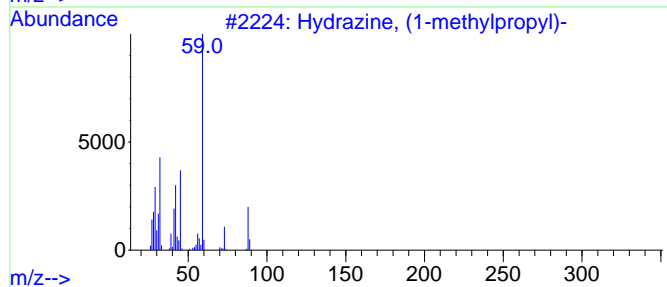
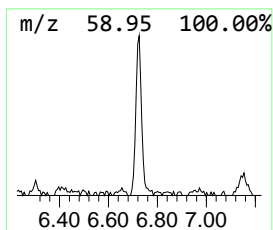
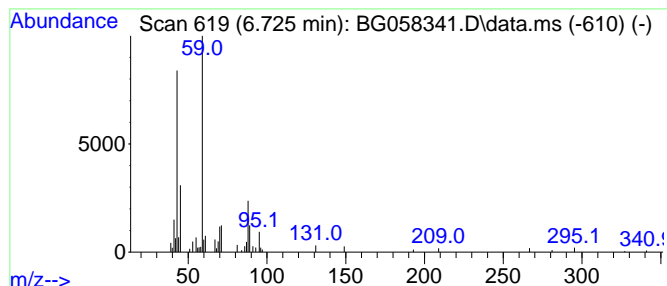
Quant Method : Z:\svoasrv\HPCHEM1\BNA_G\Methods\SFAM-EPA-BG071723.MA.M
 Quant Title : SVOA CALIBRATION

TIC Library : C:\DATABASE\NIST20.L
 TIC Integration Parameters: LSCINT.P

 Peak Number 23 Hydrazine, (1-methylpropyl)- Concentration Rank 24

R.T.	EstConc	Area	Relative to ISTD	R.T.
6.725	6.14 ng/ul	75494	1,4-Dichlorobenzene-d4	7.894

Hit#	of	5	Tentative ID	MW	MolForm	CAS#	Qual
1			Hydrazine, (1-methylpropyl)-	88	C4H12N2	030924-14-2	53
2			Propane, 1-ethoxy-	88	C5H12O	000628-32-0	50
3			2-Methyl-2,3-pentanediol	118	C6H14O2	007795-80-4	45
4			Butanamide	87	C4H9NO	000541-35-5	43
5			Butanamide	87	C4H9NO	000541-35-5	43



Data Path : Z:\svoasrv\HPCHEM1\BNA_G\Data\BG071823\
 Data File : BG058341.D
 Acq On : 20 Jul 2023 00:20
 Operator : CG/JU
 Sample : 03452-16
 Misc :
 ALS Vial : 13 Sample Multiplier: 1

Instrument :
 BNA_G
 ClientSampleId :
 A46P8

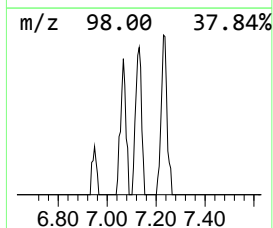
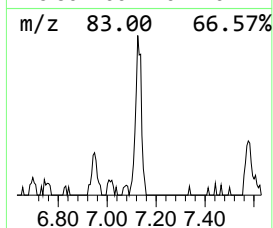
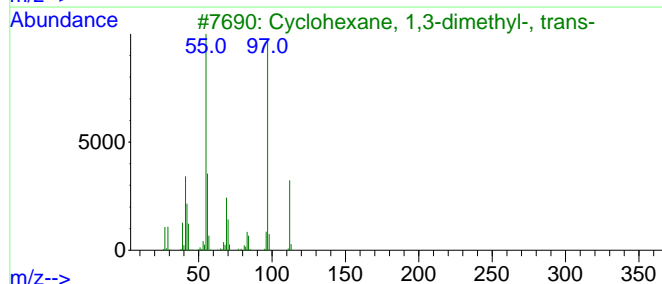
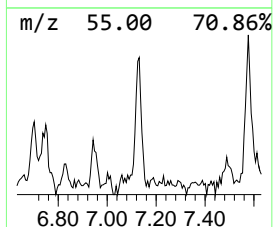
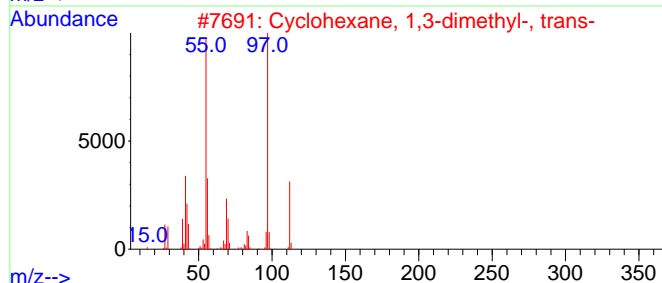
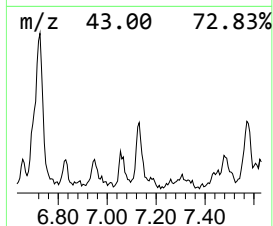
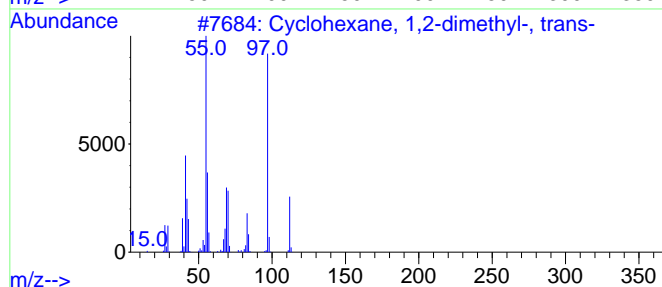
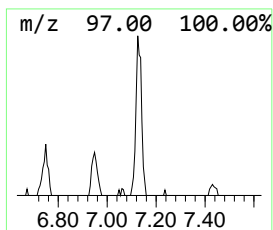
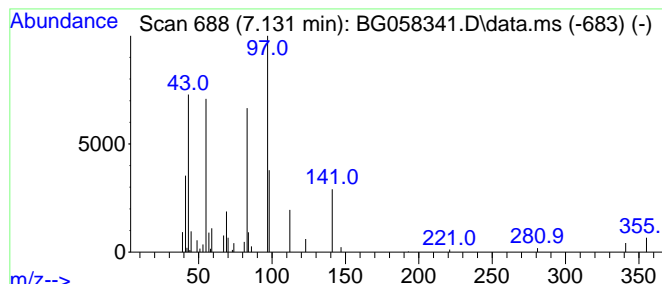
Quant Method : Z:\svoasrv\HPCHEM1\BNA_G\Methods\SFAM-EPA-BG071723.MA.M
 Quant Title : SVOA CALIBRATION

TIC Library : C:\DATABASE\NIST20.L
 TIC Integration Parameters: LSCINT.P

 Peak Number 24 (DEL) Alkane: Cyclic7.131 Concentration Rank 32

R.T.	EstConc	Area	Relative to ISTD	R.T.
7.131	3.46 ng/ul	42531	1,4-Dichlorobenzene-d4	7.894

Hit#	of	5	Tentative ID	MW	MolForm	CAS#	Qual
1			Cyclohexane, 1,2-dimethyl-, trans-	112	C8H16	006876-23-9	46
2			Cyclohexane, 1,3-dimethyl-, trans-	112	C8H16	002207-03-6	43
3			Cyclohexane, 1,3-dimethyl-, trans-	112	C8H16	002207-03-6	43
4			Cyclohexane, 1,4-dimethyl-, cis-	112	C8H16	000624-29-3	43
5			Z-3,4,4-Trimethyl-2-pentene	112	C8H16	039761-64-3	35



Data Path : Z:\svoasrv\HPCHEM1\BNA_G\Data\BG071823\
 Data File : BG058341.D
 Acq On : 20 Jul 2023 00:20
 Operator : CG/JU
 Sample : 03452-16
 Misc :
 ALS Vial : 13 Sample Multiplier: 1

Instrument :
 BNA_G
 ClientSampleId :
 A46P8

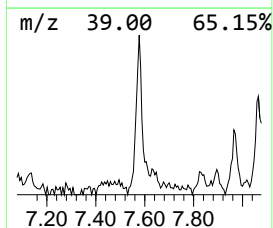
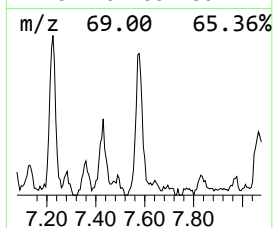
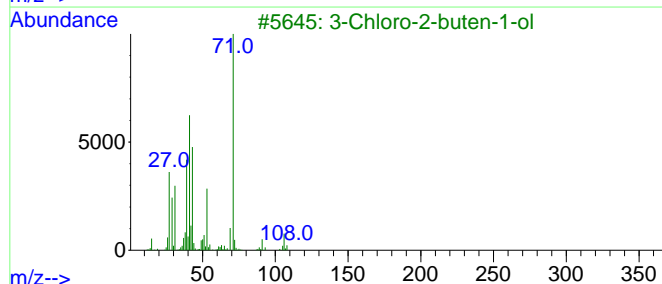
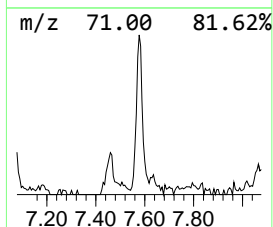
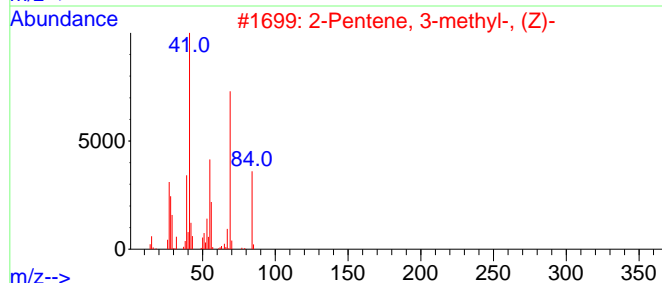
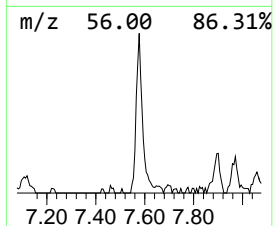
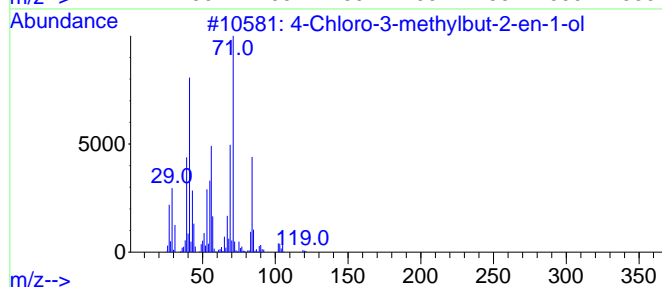
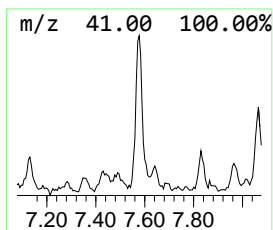
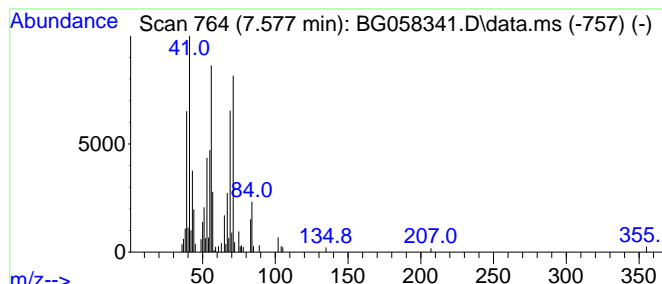
Quant Method : Z:\svoasrv\HPCHEM1\BNA_G\Methods\SFAM-EPA-BG071723.MA.M
 Quant Title : SVOA CALIBRATION

TIC Library : C:\DATABASE\NIST20.L
 TIC Integration Parameters: LSCINT.P

 Peak Number 25 4-Chloro-3-methylbut-2-en-1-ol Concentration Rank 15

R.T.	EstConc	Area	Relative to ISTD	R.T.
7.577	10.90 ng/ul	133937	1,4-Dichlorobenzene-d4	7.894

Hit#	of	5	Tentative ID	MW	MolForm	CAS#	Qual
1			4-Chloro-3-methylbut-2-en-1-ol	120	C5H9ClO	053170-97-1	59
2			2-Pentene, 3-methyl-, (Z)-	84	C6H12	000922-62-3	50
3			3-Chloro-2-buten-1-ol	106	C4H7ClO	040605-42-3	43
4			Ethanamine, N-pentylidene-	113	C7H15N	010599-76-5	35
5			2-Butyne, 1-methoxy-	84	C5H8O	002768-41-4	27



Data Path : Z:\svoasrv\HPCHEM1\BNA_G\Data\BG071823\
 Data File : BG058341.D
 Acq On : 20 Jul 2023 00:20
 Operator : CG/JU
 Sample : 03452-16
 Misc :
 ALS Vial : 13 Sample Multiplier: 1

Instrument :
 BNA_G
 ClientSampleId :
 A46P8

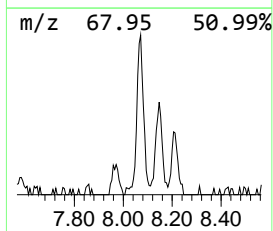
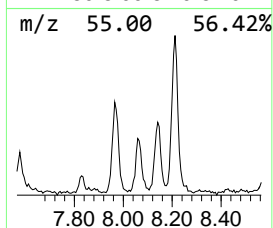
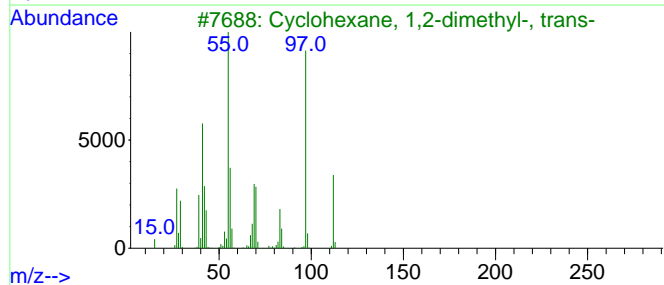
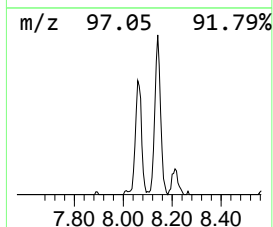
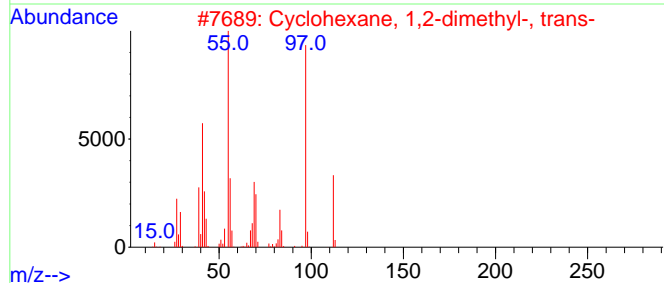
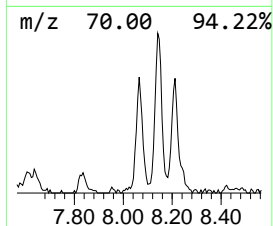
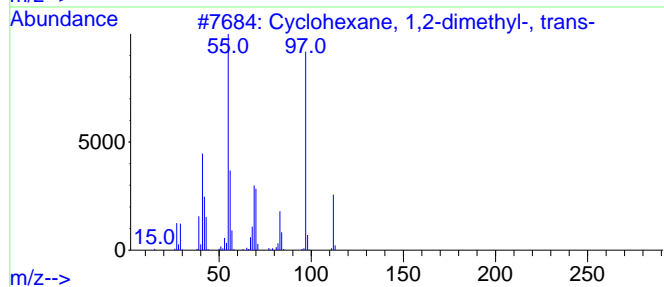
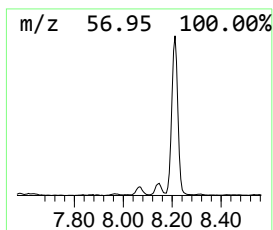
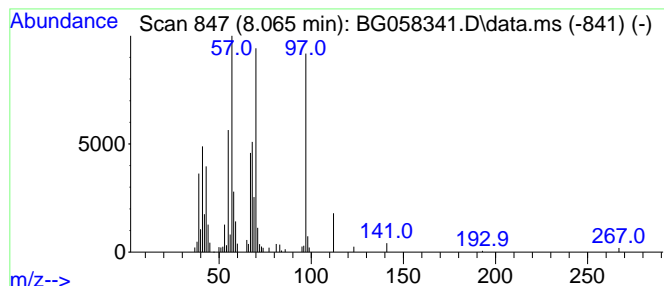
Quant Method : Z:\svoasrv\HPCHEM1\BNA_G\Methods\SFAM-EPA-BG071723.MA.M
 Quant Title : SVOA CALIBRATION

TIC Library : C:\DATABASE\NIST20.L
 TIC Integration Parameters: LSCINT.P

 Peak Number 27 (DEL) Alkane: Cyclic8.065 Concentration Rank 16

R.T.	EstConc	Area	Relative to ISTD	R.T.
8.065	10.12 ng/ul	124435	1,4-Dichlorobenzene-d4	7.894

Hit#	of 5	Tentative ID	MW	MolForm	CAS#	Qual
1		Cyclohexane, 1,2-dimethyl-, trans-	112	C8H16	006876-23-9	27
2		Cyclohexane, 1,2-dimethyl-, trans-	112	C8H16	006876-23-9	27
3		Cyclohexane, 1,2-dimethyl-, trans-	112	C8H16	006876-23-9	27
4		2-Pentene, 2,3,4-trimethyl-	112	C8H16	000565-77-5	25
5		2-Pentene, 3,4,4-trimethyl-	112	C8H16	000598-96-9	25



Data Path : Z:\svoasrv\HPCHEM1\BNA_G\Data\BG071823\
 Data File : BG058341.D
 Acq On : 20 Jul 2023 00:20
 Operator : CG/JU
 Sample : 03452-16
 Misc :
 ALS Vial : 13 Sample Multiplier: 1

Instrument :
 BNA_G
 ClientSampleId :
 A46P8

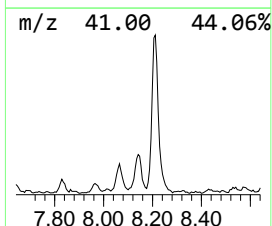
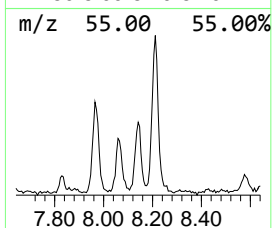
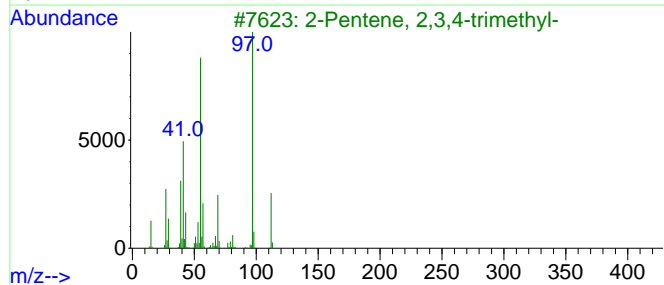
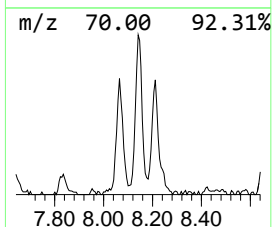
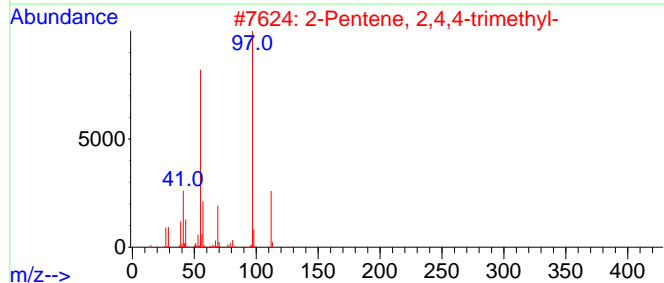
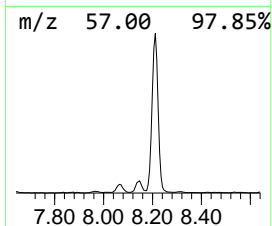
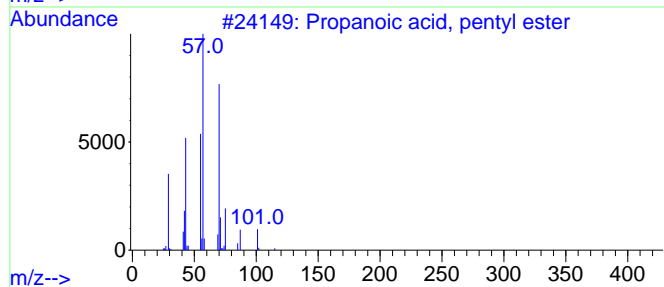
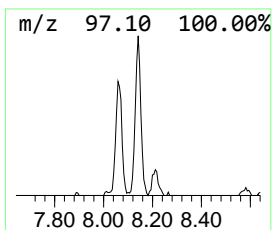
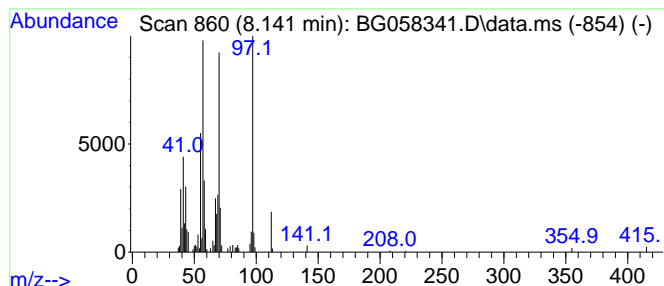
Quant Method : Z:\svoasrv\HPCHEM1\BNA_G\Methods\SFAM-EPA-BG071723.MA.M
 Quant Title : SVOA CALIBRATION

TIC Library : C:\DATABASE\NIST20.L
 TIC Integration Parameters: LSCINT.P

 Peak Number 28 unknown-09 Concentration Rank 10

R.T.	EstConc	Area	Relative to ISTD	R.T.
8.141	15.14 ng/ul	186084	1,4-Dichlorobenzene-d4	7.894

Hit#	of	5	Tentative ID	MW	MolForm	CAS#	Qual
1			Propanoic acid, pentyl ester	144	C8H16O2	000624-54-4	35
2			2-Pentene, 2,4,4-trimethyl-	112	C8H16	000107-40-4	30
3			2-Pentene, 2,3,4-trimethyl-	112	C8H16	000565-77-5	27
4			Sulfurous acid, cyclohexylmethyl...	360	C20H40O3S	1000309-22-1	27
5			2-Pentene, 2,4,4-trimethyl-	112	C8H16	000107-40-4	25



Data Path : Z:\svoasrv\HPCHEM1\BNA_G\Data\BG071823\
 Data File : BG058341.D
 Acq On : 20 Jul 2023 00:20
 Operator : CG/JU
 Sample : 03452-16
 Misc :
 ALS Vial : 13 Sample Multiplier: 1

Instrument :
 BNA_G
 ClientSampleId :
 A46P8

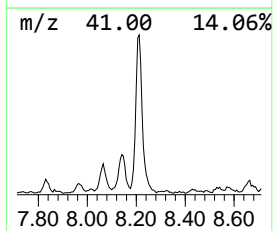
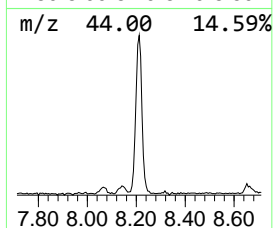
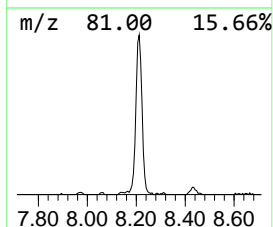
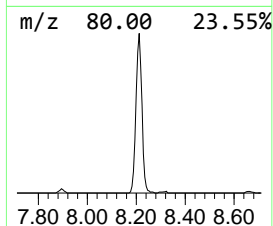
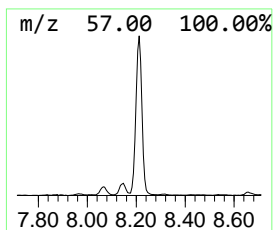
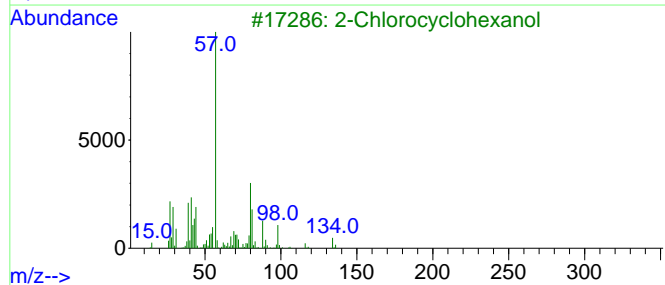
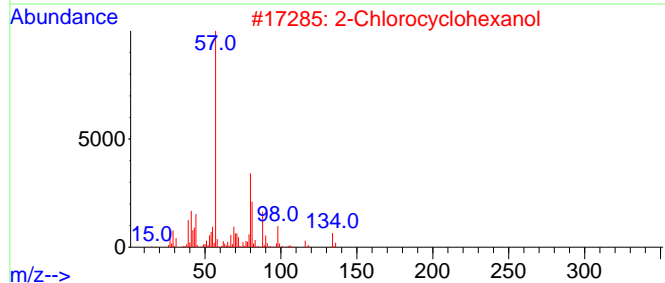
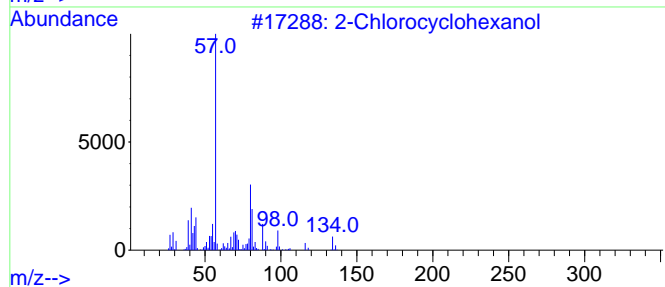
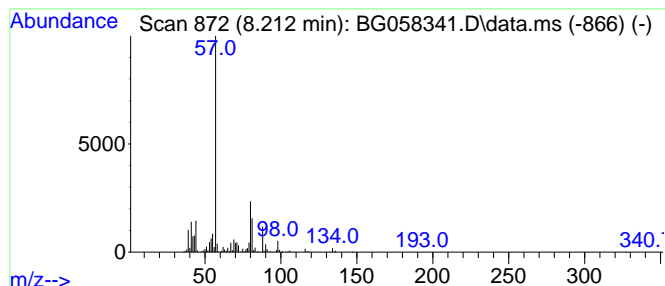
Quant Method : Z:\svoasrv\HPCHEM1\BNA_G\Methods\SFAM-EPA-BG071723.MA.M
 Quant Title : SVOA CALIBRATION

TIC Library : C:\DATABASE\NIST20.L
 TIC Integration Parameters: LSCINT.P

 Peak Number 29 2-Chlorocyclohexanol Concentration Rank 3

R.T.	EstConc	Area	Relative to ISTD	R.T.
8.212	72.16 ng/ul	887051	1,4-Dichlorobenzene-d4	7.894

Hit#	of	5	Tentative ID	MW	MolForm	CAS#	Qual
1			2-Chlorocyclohexanol	134	C6H11ClO	001561-86-0	83
2			2-Chlorocyclohexanol	134	C6H11ClO	001561-86-0	72
3			2-Chlorocyclohexanol	134	C6H11ClO	001561-86-0	64
4			2-Chlorocyclohexanol	134	C6H11ClO	001561-86-0	59
5			Cyclohexanol, 4-chloro-, trans-	134	C6H11ClO	029538-77-0	49



Data Path : Z:\svoasrv\HPCHEM1\BNA_G\Data\BG071823\
 Data File : BG058341.D
 Acq On : 20 Jul 2023 00:20
 Operator : CG/JU
 Sample : 03452-16
 Misc :
 ALS Vial : 13 Sample Multiplier: 1

Instrument :
 BNA_G
 ClientSampleId :
 A46P8

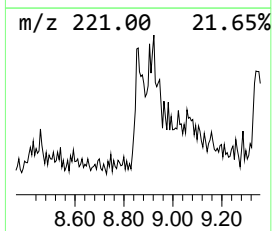
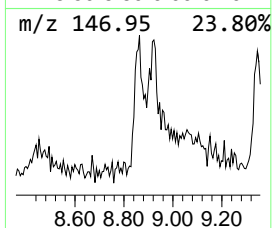
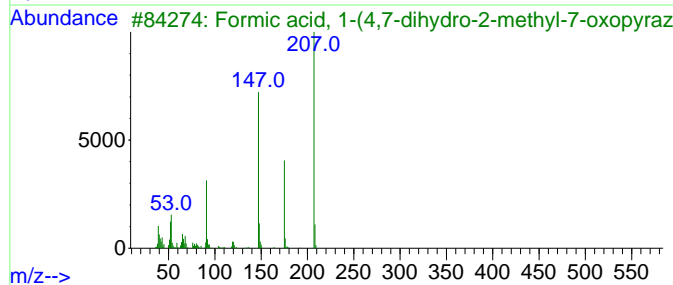
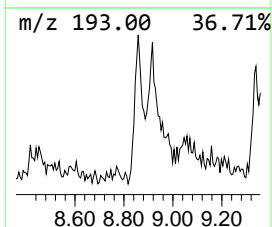
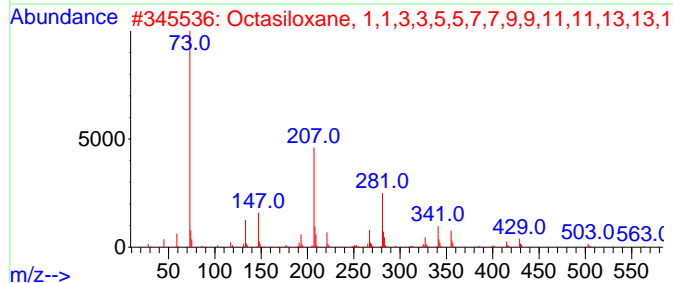
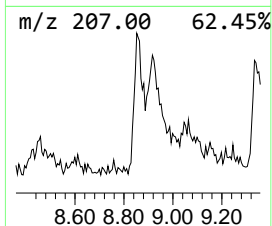
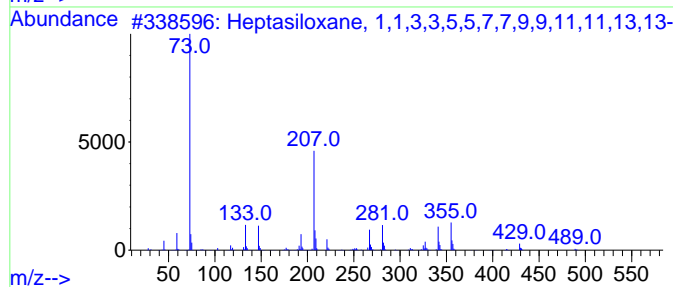
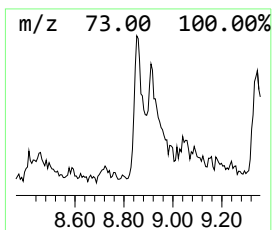
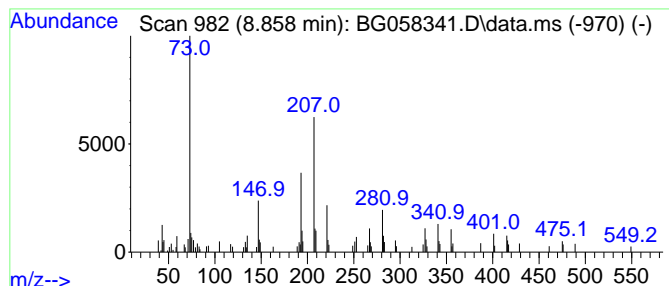
Quant Method : Z:\svoasrv\HPCHEM1\BNA_G\Methods\SFAM-EPA-BG071723.MA.M
 Quant Title : SVOA CALIBRATION

TIC Library : C:\DATABASE\NIST20.L
 TIC Integration Parameters: LSCINT.P

 Peak Number 31 unknown-10 Concentration Rank 20

R.T.	EstConc	Area	Relative to ISTD	R.T.
8.858	7.44 ng/ul	91480	1,4-Dichlorobenzene-d4	7.894

Hit#	of	5	Tentative ID	MW	MolForm	CAS#	Qual
1			Heptasiloxane, 1,1,3,3,5,5,7,7,9...	504	C14H44O6Si7	019095-23-9	49
2			Octasiloxane, 1,1,3,3,5,5,7,7,9...	578	C16H50O7Si8	019095-24-0	35
3			Formic acid, 1-(4,7-dihydro-2-me...	207	C9H9N3O3	1010267-28-6	30
4			1,2-Bis(trimethylsilyl)benzene	222	C12H22Si2	017151-09-6	27
5			1H,2H,3H,4H-Pyrido[3,4-b]pyrazin...	207	C10H17N3Si	1000468-11-8	27



Data Path : Z:\svoasrv\HPCHEM1\BNA_G\Data\BG071823\
 Data File : BG058341.D
 Acq On : 20 Jul 2023 00:20
 Operator : CG/JU
 Sample : 03452-16
 Misc :
 ALS Vial : 13 Sample Multiplier: 1

Instrument :
 BNA_G
 ClientSampleId :
 A46P8

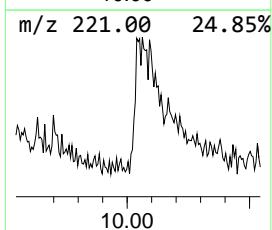
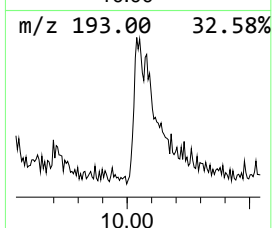
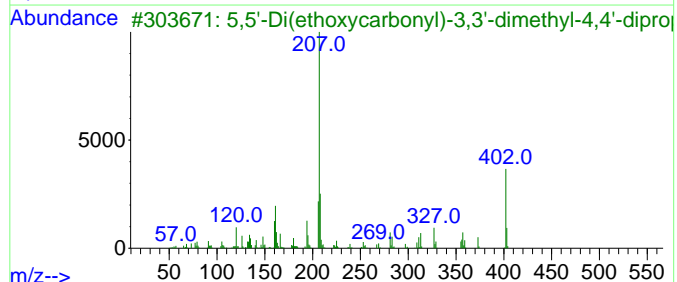
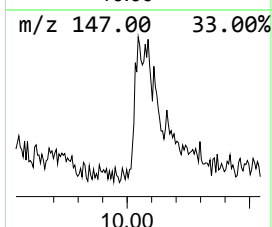
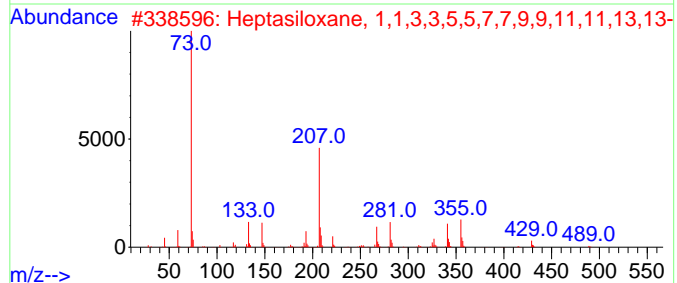
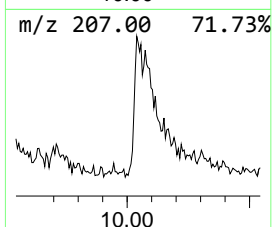
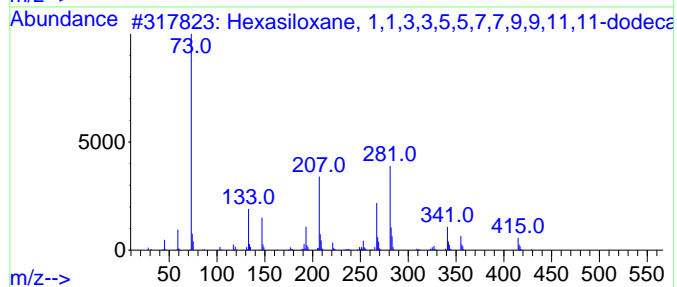
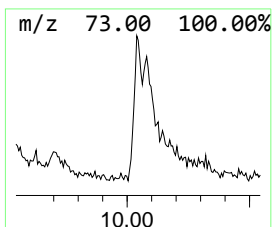
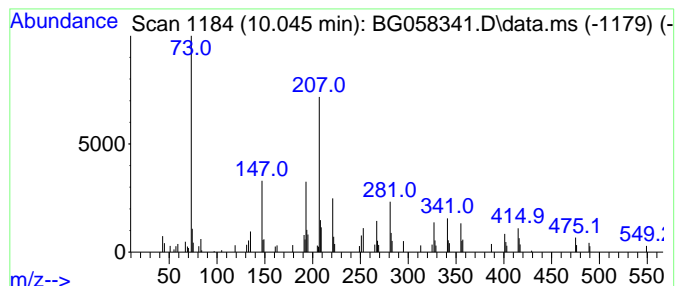
Quant Method : Z:\svoasrv\HPCHEM1\BNA_G\Methods\SFAM-EPA-BG071723.MA.M
 Quant Title : SVOA CALIBRATION

TIC Library : C:\DATABASE\NIST20.L
 TIC Integration Parameters: LSCINT.P

 Peak Number 35 unknown-11 Concentration Rank 27

R.T.	EstConc	Area	Relative to ISTD	R.T.
10.045	4.23 ng/ul	90990	Naphthalene-d8	10.697

Hit#	of	5	Tentative ID	MW	MolForm	CAS#	Qual
1			Hexasiloxane, 1,1,3,3,5,5,7,7,9,...	430	C12H3805Si6	000995-82-4	46
2			Heptasiloxane, 1,1,3,3,5,5,7,7,9...	504	C14H4406Si7	019095-23-9	35
3			5,5'-Di(ethoxycarbonyl)-3,3'-dim...	402	C23H34N2O4	102586-97-0	35
4			Indole-2-one, 2,3-dihydro-N-hydr...	207	C11H13N03	1010129-52-1	30
5			N-Methyl-1-adamantaneacetamide	207	C13H21NO	031897-93-5	30



Data Path : Z:\svoasrv\HPCHEM1\BNA_G\Data\BG071823\
 Data File : BG058341.D
 Acq On : 20 Jul 2023 00:20
 Operator : CG/JU
 Sample : 03452-16
 Misc :
 ALS Vial : 13 Sample Multiplier: 1

Instrument :
 BNA_G
 ClientSampleId :
 A46P8

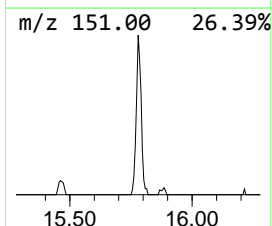
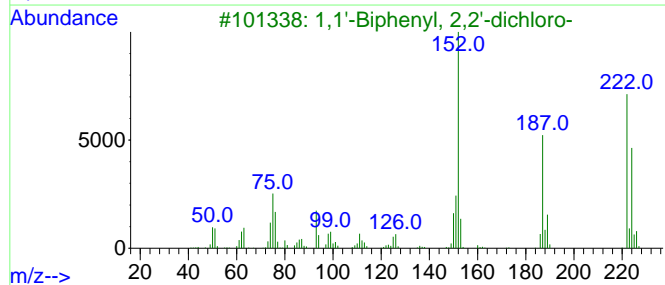
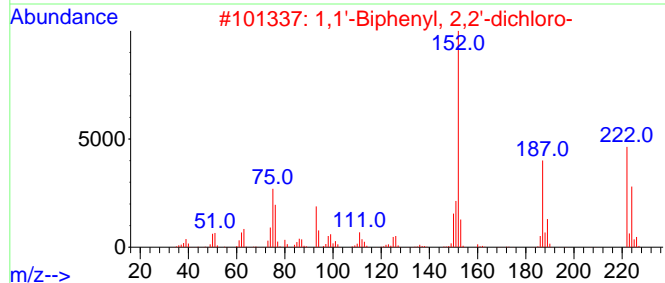
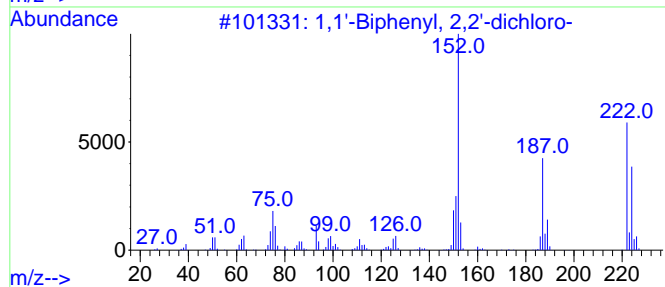
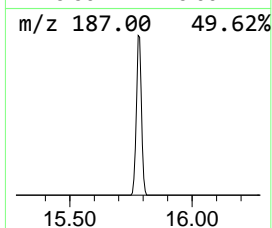
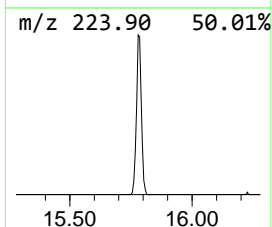
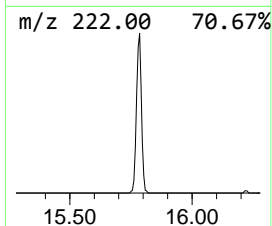
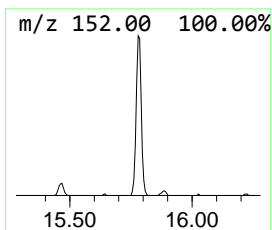
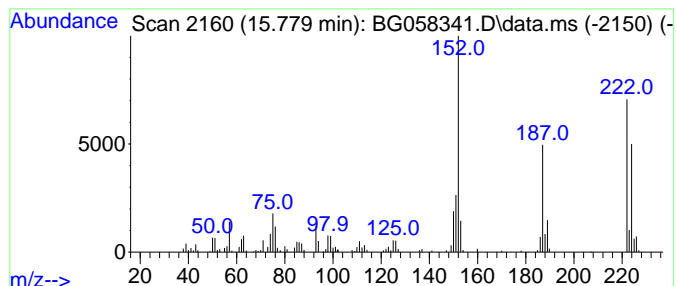
Quant Method : Z:\svoasrv\HPCHEM1\BNA_G\Methods\SFAM-EPA-BG071723.MA.M
 Quant Title : SVOA CALIBRATION

TIC Library : C:\DATABASE\NIST20.L
 TIC Integration Parameters: LSCINT.P

 Peak Number 43 1,1'-Biphenyl, 2,2'-dichloro- Concentration Rank 23

R.T.	EstConc	Area	Relative to ISTD	R.T.
15.779	6.75 ng/ul	211652	Acenaphthene-d10	14.534

Hit#	of	5	Tentative ID	MW	MolForm	CAS#	Qual
1			1,1'-Biphenyl, 2,2'-dichloro-	222	C12H8Cl2	013029-08-8	99
2			1,1'-Biphenyl, 2,2'-dichloro-	222	C12H8Cl2	013029-08-8	99
3			1,1'-Biphenyl, 2,2'-dichloro-	222	C12H8Cl2	013029-08-8	98
4			1,1'-Biphenyl, 2,2'-dichloro-	222	C12H8Cl2	013029-08-8	98
5			1,1'-Biphenyl, 2,4'-dichloro-	222	C12H8Cl2	034883-43-7	96



Data Path : Z:\svoasrv\HPCHEM1\BNA_G\Data\BG071823\
 Data File : BG058341.D
 Acq On : 20 Jul 2023 00:20
 Operator : CG/JU
 Sample : 03452-16
 Misc :
 ALS Vial : 13 Sample Multiplier: 1

Instrument :
 BNA_G
 ClientSampleId :
 A46P8

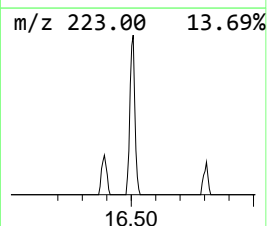
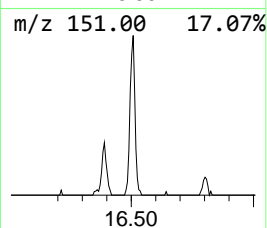
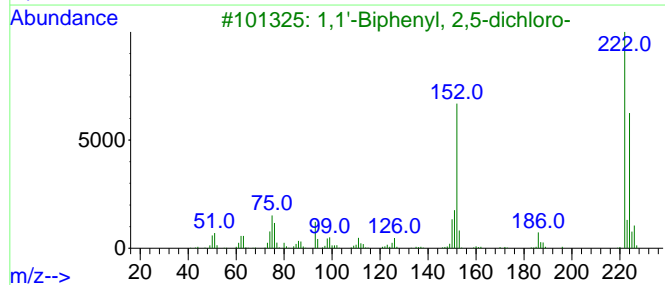
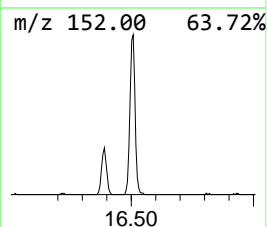
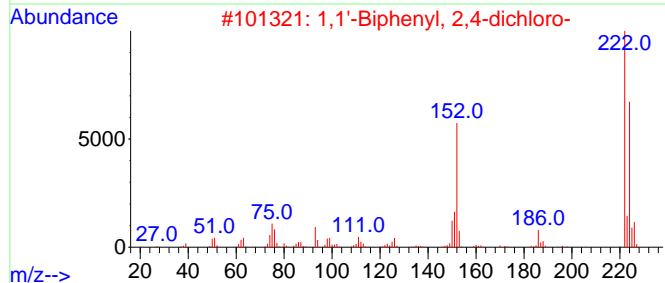
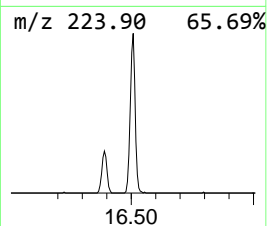
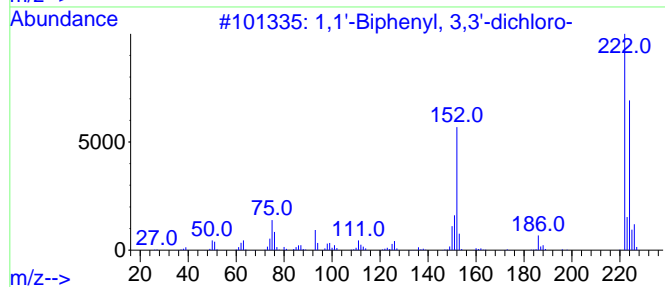
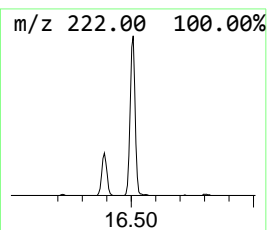
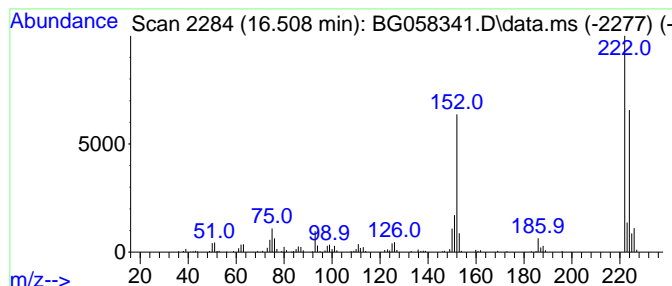
Quant Method : Z:\svoasrv\HPCHEM1\BNA_G\Methods\SFAM-EPA-BG071723.MA.M
 Quant Title : SVOA CALIBRATION

TIC Library : C:\DATABASE\NIST20.L
 TIC Integration Parameters: LSCINT.P

 Peak Number 45 1,1'-Biphenyl, 3,3'-dichloro- Concentration Rank 25

R.T.	EstConc	Area	Relative to ISTD	R.T.
16.508	5.88 ng/ul	260612	Phenanthrene-d10	17.278

Hit#	of	5	Tentative ID	MW	MolForm	CAS#	Qual
1			1,1'-Biphenyl, 3,3'-dichloro-	222	C12H8Cl2	002050-67-1	99
2			1,1'-Biphenyl, 2,4-dichloro-	222	C12H8Cl2	033284-50-3	99
3			1,1'-Biphenyl, 2,5-dichloro-	222	C12H8Cl2	034883-39-1	98
4			1,1'-Biphenyl, 3,3'-dichloro-	222	C12H8Cl2	002050-67-1	98
5			1,1'-Biphenyl, 2,4'-dichloro-	222	C12H8Cl2	034883-43-7	98



Data Path : Z:\svoasrv\HPCHEM1\BNA_G\Data\BG071823\
 Data File : BG058341.D
 Acq On : 20 Jul 2023 00:20
 Operator : CG/JU
 Sample : 03452-16
 Misc :
 ALS Vial : 13 Sample Multiplier: 1

Instrument :
 BNA_G
 ClientSampleId :
 A46P8

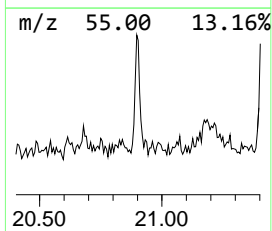
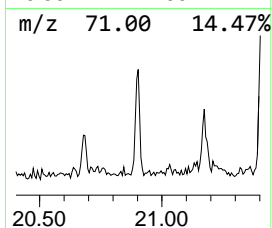
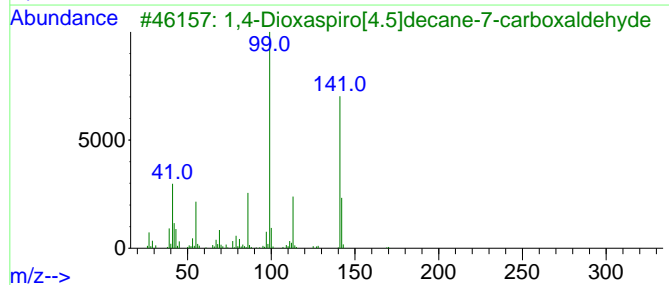
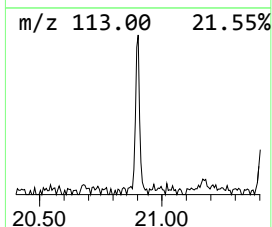
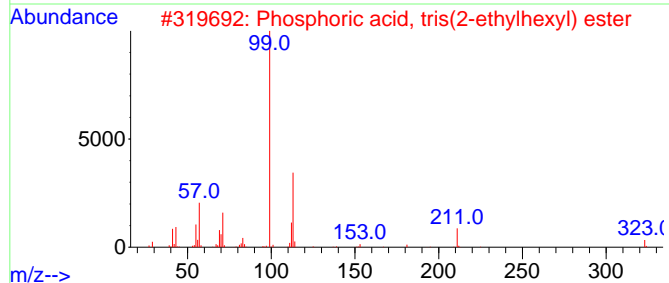
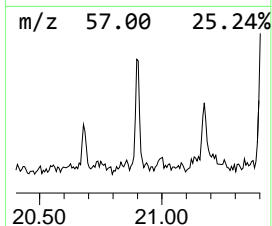
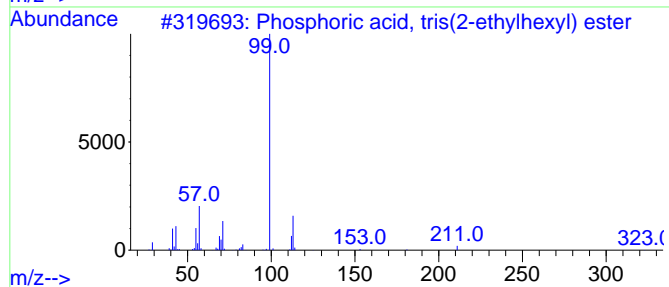
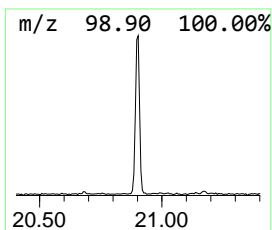
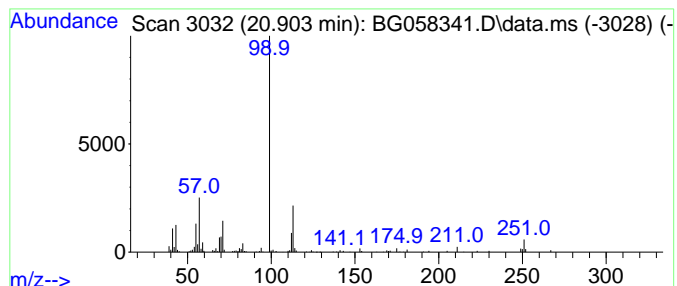
Quant Method : Z:\svoasrv\HPCHEM1\BNA_G\Methods\SFAM-EPA-BG071723.MA.M
 Quant Title : SVOA CALIBRATION

TIC Library : C:\DATABASE\NIST20.L
 TIC Integration Parameters: LSCINT.P

 Peak Number 46 Phosphoric acid, tris(2-eth... Concentration Rank 44

R.T.	EstConc	Area	Relative to ISTD	R.T.
20.903	2.29 ng/ul	94932	Chrysene-d12	21.525

Hit#	of	5	Tentative ID	MW	MolForm	CAS#	Qual
1			Phosphoric acid, tris(2-ethylhex...	434	C24H51O4P	000078-42-2	83
2			Phosphoric acid, tris(2-ethylhex...	434	C24H51O4P	000078-42-2	53
3			1,4-Dioxaspiro[4.5]decane-7-carb...	170	C9H14O3	065005-14-3	45
4			Phosphoric acid, trioctyl ester	434	C24H51O4P	001806-54-8	43
5			Triisobutyl phosphate	266	C12H27O4P	000126-71-6	40



Data Path : Z:\svoasrv\HPCHEM1\BNA_G\Data\BG071823\
 Data File : BG058341.D
 Acq On : 20 Jul 2023 00:20
 Operator : CG/JU
 Sample : 03452-16
 Misc :
 ALS Vial : 13 Sample Multiplier: 1

Instrument :
 BNA_G
 ClientSampleId :
 A46P8

Quant Method : Z:\svoasrv\HPCHEM1\BNA_G\Methods\SFAM-EPA-BG071723.MA.M
 Quant Title : SVOA CALIBRATION

TIC Library : C:\DATABASE\NIST0.L
 TIC Integration Parameters: LSCINT.P

TIC Top Hit name	RT	EstConc	Units	Response	--Internal Standard--			
					#	RT	Resp	Conc
Furan, tetrahyd...	3.123	218.1	ng/ul	2680560	1	7.894	245842	20.0
Cyclobutane, et...	3.147	473.1	ng/ul	5815360	1	7.894	245842	20.0
unknown-01	3.858	4.2	ng/ul	51620	1	7.894	245842	20.0
unknown-02	3.911	3.7	ng/ul	45629	1	7.894	245842	20.0
Prenol	3.987	2.8	ng/ul	34416	1	7.894	245842	20.0
unknown-03	4.069	27.3	ng/ul	335642	1	7.894	245842	20.0
Formamide, N,N-...	4.152	15.0	ng/ul	184255	1	7.894	245842	20.0
2-Butenal, 3-me...	4.234	13.3	ng/ul	163005	1	7.894	245842	20.0
(DEL) Alkane: S...	4.304	12.5	ng/ul	153949	1	7.894	245842	20.0
3-Hexen-1-ol, (E)-	4.451	8.4	ng/ul	103535	1	7.894	245842	20.0
Propanoic acid,...	4.586	3.4	ng/ul	41807	1	7.894	245842	20.0
unknown-04	4.639	43.2	ng/ul	530492	1	7.894	245842	20.0
unknown-05	4.675	21.2	ng/ul	260839	1	7.894	245842	20.0
Cyclopentane, n...	4.710	8.0	ng/ul	97860	1	7.894	245842	20.0
Guanidine, mono...	5.080	4.8	ng/ul	59341	1	7.894	245842	20.0
unknown-06	5.356	7.1	ng/ul	87518	1	7.894	245842	20.0
2-Cyclohexen-1-ol	5.791	42.0	ng/ul	516918	1	7.894	245842	20.0
2,4-Dimethylfuran	5.832	8.8	ng/ul	108185	1	7.894	245842	20.0
unknown-07	5.891	24.7	ng/ul	303175	1	7.894	245842	20.0
Cyclohexene, 3-...	6.173	7.3	ng/ul	90393	1	7.894	245842	20.0
unknown-08	6.402	15.1	ng/ul	185408	1	7.894	245842	20.0
2-Cyclohexen-1-one	6.519	49.1	ng/ul	604191	1	7.894	245842	20.0
Hydrazine, (1-m...	6.725	6.1	ng/ul	75494	1	7.894	245842	20.0
(DEL) Alkane: C...	7.131	3.5	ng/ul	42531	1	7.894	245842	20.0
4-Chloro-3-meth...	7.577	10.9	ng/ul	133937	1	7.894	245842	20.0
(DEL) Alkane: C...	8.065	10.1	ng/ul	124435	1	7.894	245842	20.0
unknown-09	8.141	15.1	ng/ul	186084	1	7.894	245842	20.0
2-Chlorocyclohe...	8.212	72.2	ng/ul	887051	1	7.894	245842	20.0
unknown-10	8.858	7.4	ng/ul	91480	1	7.894	245842	20.0
unknown-11	10.045	4.2	ng/ul	90990	2	10.697	429880	20.0
1,1'-Biphenyl, ...	15.779	6.8	ng/ul	211652	3	14.534	627009	20.0
1,1'-Biphenyl, ...	16.508	5.9	ng/ul	260612	4	17.278	885729	20.0
Phosphoric acid...	20.903	2.3	ng/ul	94932	5	21.525	830378	20.0