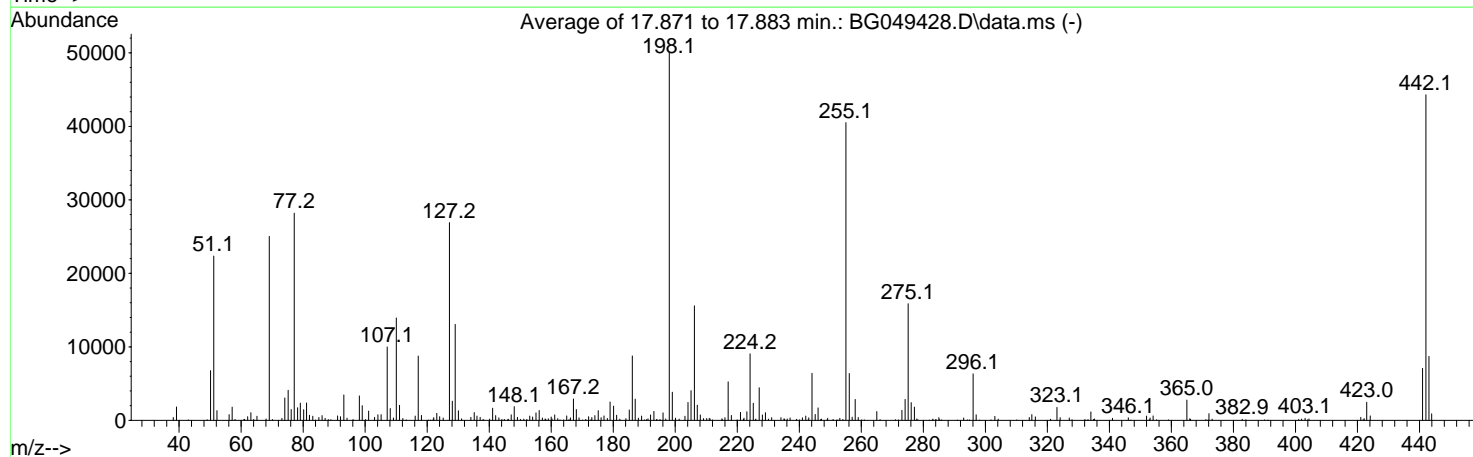
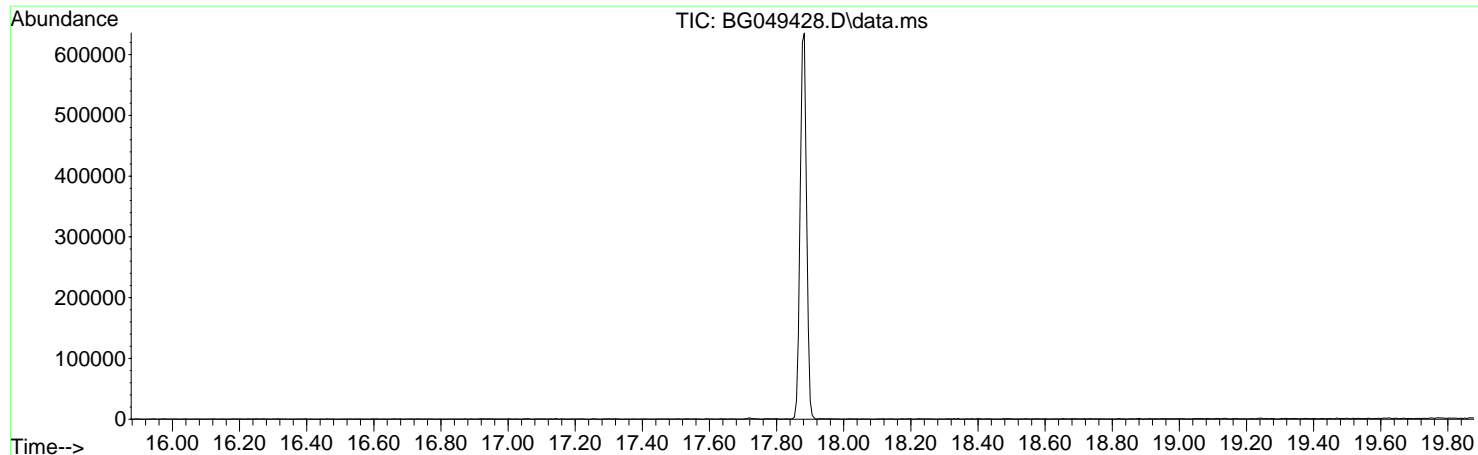


Data Path : Z:\svoasrv\HPCHEM1\BNA_G\Data\BG072421\
 Data File : BG049428.D
 Acq On : 23 Jul 2021 15:54
 Operator : CG/JU
 Sample : DFTPP403
 Misc :
 ALS Vial : 1 Sample Multiplier: 1

Instrument :
 BNA_G
 ClientSampleId :
 DFTPP403

Integration File: LSCINT.P

Method : Z:\SVOASRV\HPCHEM1\BNA_G\METHODS\SFAM-EPA-BG072421.M
 Title : SVOA CALIBRATION
 Last Update : Mon Jul 26 01:16:50 2021



AutoFind: Scans 2525, 2526, 2527; Background Corrected with Scan 2520

Target Mass	Rel. to Mass	Lower Limit%	Upper Limit%	Rel. Abn%	Raw Abn	Result Pass/Fail
51	198	10	80	44.7	22368	PASS
68	69	0.00	2	0.8	191	PASS
69	198	0.00	100	50.0	25027	PASS
70	69	0.00	2	0.4	111	PASS
127	198	10	80	53.8	26917	PASS
197	198	0.00	2	0.4	188	PASS
198	198	100	100	100.0	50048	PASS
199	198	5	9	7.7	3829	PASS
275	198	10	60	31.7	15880	PASS
365	198	1	100	5.5	2764	PASS
441	198	0.01	100	14.2	7085	PASS
442	198	50	100	88.5	44304	PASS
443	442	15	24	19.7	8719	PASS

m/z	Abundance
39.95	151.0
44.05	240.0

Instrument :
BNA_G
ClientSampleId :
DFTPP403

m/z	Abundance
38.15	297.0
39.15	1117.0
50.15	5439.0
51.15	18536.0
52.15	1175.0
56.05	463.0
57.05	1236.0
58.05	232.0
60.95	490.0
62.05	483.0
63.15	1003.0
64.05	175.0
65.05	514.0
69.05	20056.0
73.05	271.0
74.05	2399.0
75.15	3209.0
76.15	1100.0
77.15	20824.0
78.15	1350.0
79.05	2043.0
80.15	1339.0
81.15	1551.0
82.05	703.0
83.15	585.0
85.05	326.0
86.05	327.0
87.15	252.0
88.15	159.0
91.15	655.0
92.15	569.0
93.05	2808.0
94.25	251.0
98.15	2348.0
99.05	1598.0
101.05	1283.0
102.95	234.0
104.05	758.0
105.15	732.0
107.05	7805.0
108.05	1002.0
109.05	269.0
110.05	11053.0
111.15	1445.0
112.15	178.0
116.25	460.0
117.15	7027.0
118.05	246.0
121.95	588.0
123.15	822.0
124.05	357.0
125.15	161.0
127.15	19520.0
128.05	2170.0
129.05	10265.0
130.05	990.0
131.05	209.0
134.05	244.0
135.15	708.0
136.05	635.0
137.05	193.0
138.25	172.0
140.15	249.0
141.15	1335.0
142.05	301.0
143.05	209.0
144.95	205.0
145.95	256.0
147.15	596.0
148.05	1586.0
149.05	279.0
150.05	189.0
151.15	178.0
152.05	260.0
153.05	435.0
154.15	294.0
155.15	502.0
156.05	902.0
157.25	299.0
158.05	254.0
159.05	175.0
160.25	569.0
161.05	689.0
162.15	195.0
162.85	171.0
165.05	510.0
166.05	285.0
167.15	2053.0
168.05	1075.0
168.95	212.0
172.05	423.0

Instrument :
BNA_G
ClientSampleId :
DFTPP403

372.25	232.0
382.85	167.0
390.05	189.0
403.05	285.0
421.15	198.0
422.15	211.0
423.05	1643.0
424.05	300.0
440.95	4031.0
442.05	23640.0
443.05	5234.0
443.95	477.0

Instrument :
BNA_G
ClientSampleId :
DFTPP403

172.85	240.0
174.05	541.0
175.15	732.0
176.15	402.0
176.95	417.0
178.15	351.0
178.95	1889.0
180.05	1370.0
181.15	406.0
184.25	160.0
185.15	991.0
186.15	6263.0
187.15	2079.0
188.15	278.0
189.15	436.0
191.25	209.0
192.05	594.0
193.05	1094.0
196.05	566.0
196.95	563.0
198.05	35064.0
199.05	2710.0
200.05	302.0
203.15	372.0
204.05	1655.0
205.15	2963.0
206.15	10950.0
207.05	1417.0
208.05	568.0
210.25	151.0
210.95	367.0
215.15	325.0
215.95	219.0
217.05	3898.0
218.05	672.0
221.15	871.0
221.95	485.0
223.05	824.0
224.15	6187.0
225.15	1759.0
225.85	176.0
226.05	171.0
227.05	3167.0
228.05	501.0
229.15	463.0
231.05	286.0
234.05	298.0
235.05	184.0
236.05	193.0
237.05	209.0
239.15	217.0
240.95	164.0
242.05	222.0
242.85	247.0
244.15	4278.0
245.15	354.0
246.05	1177.0
248.95	191.0
250.85	223.0
253.15	207.0
254.05	427.0
255.05	26024.0
256.05	4709.0
257.05	272.0
258.05	1471.0
258.95	272.0
264.95	648.0
273.05	847.0
274.05	1926.0
275.05	10399.0
276.05	1744.0
277.15	1260.0
282.95	176.0
285.05	315.0
293.05	300.0
296.05	3863.0
297.05	480.0
303.05	301.0
304.15	185.0
314.25	168.0
314.95	615.0
316.15	346.0
323.15	1023.0
324.05	223.0
327.15	168.0
334.05	472.0
335.15	208.0
341.05	188.0
346.15	293.0
352.05	357.0
353.05	351.0
354.05	327.0
364.95	1798.0
365.95	331.0
371.85	232.0

Instrument :
BNA_G
ClientSampleId :
DFTPP403

m/z	Abundance
38.05	440.0
39.15	2207.0
39.95	243.0
44.05	170.0
49.05	273.0
50.15	7753.0
51.15	24760.0
52.15	1552.0
56.05	974.0
57.15	2152.0
58.05	177.0
61.15	371.0
62.15	483.0
63.15	1211.0
64.05	242.0
65.15	525.0
68.05	572.0
69.15	28176.0
70.15	160.0
73.15	363.0
74.15	3761.0
75.15	5050.0
76.15	1915.0
77.15	32456.0
78.25	2161.0
79.15	2646.0
80.15	1354.0
81.15	2961.0
82.05	505.0
83.05	491.0
84.05	151.0
85.05	603.0
86.15	661.0
86.95	355.0
88.95	267.0
91.05	679.0
92.05	481.0
93.05	4564.0
94.05	382.0
96.05	280.0
98.05	4014.0
99.05	2045.0
101.15	1488.0
103.05	610.0
104.05	944.0
105.15	1115.0
107.15	11736.0
108.05	2056.0
109.05	429.0
110.05	15523.0
111.05	2446.0
112.15	319.0
116.05	651.0
117.05	9517.0
118.15	871.0
121.15	166.0
122.15	665.0
123.15	1107.0
124.05	634.0
125.15	402.0
127.15	32528.0
128.15	2889.0
129.05	15424.0
130.05	1194.0
131.15	273.0
134.15	453.0
135.15	1124.0
136.05	692.0
136.95	400.0
137.95	164.0
141.05	1438.0
142.15	850.0
143.15	325.0
144.05	216.0
146.15	263.0
147.05	873.0
148.05	2349.0
149.05	524.0
151.15	375.0
152.25	186.0
153.15	757.0
153.95	521.0
155.15	1039.0
156.15	1463.0
157.05	488.0
158.25	452.0
159.05	183.0
159.95	774.0
161.15	638.0
162.15	288.0
163.95	221.0

Instrument :
BNA_G
ClientSampleId :
DFTPP403

165.05	662.0
165.65	223.0
166.25	519.0
167.15	3436.0
168.15	1501.0
168.95	378.0
170.05	163.0
172.05	459.0
173.15	594.0
174.05	606.0
175.15	1728.0
176.05	432.0
177.05	640.0
178.15	214.0
179.05	2771.0
180.15	2230.0
181.05	852.0
182.05	231.0
184.05	358.0
185.15	1672.0
186.15	9730.0
187.15	3106.0
188.05	303.0
189.15	705.0
190.05	231.0
190.75	317.0
192.05	931.0
193.15	1288.0
193.95	344.0
195.25	207.0
196.05	1290.0
198.05	58224.0
199.05	4205.0
200.15	224.0
201.25	225.0
203.15	579.0
204.15	2934.0
205.15	4258.0
206.15	18192.0
207.15	2458.0
208.05	772.0
209.15	520.0
210.15	214.0
211.25	616.0
212.05	213.0
214.95	362.0
216.05	450.0
217.05	5992.0
218.15	715.0
220.95	937.0
222.15	503.0
223.15	1464.0
224.15	10670.0
225.15	2411.0
227.05	4874.0
228.15	900.0
229.15	1316.0
230.15	296.0
231.15	501.0
234.05	489.0
235.05	479.0
236.15	372.0
237.15	242.0
239.15	245.0
241.05	459.0
242.15	796.0
243.05	462.0
244.05	6422.0
245.05	1060.0
246.05	2147.0
246.95	370.0
249.15	465.0
250.95	164.0
252.05	157.0
252.45	221.0
253.05	380.0
255.05	45120.0
256.15	6873.0
257.05	609.0
258.05	3045.0
259.05	322.0
260.95	179.0
265.05	1488.0
265.95	159.0
273.05	1446.0
274.05	3651.0
275.05	18128.0
276.15	2934.0
277.05	2222.0
277.95	357.0
283.15	213.0
283.85	172.0
284.15	169.0
284.95	274.0
285.25	303.0

Instrument :
BNA_G
ClientSampleId :
DFTPP403

285.95	173.0
290.95	165.0
293.05	311.0
294.25	173.0
296.05	7208.0
297.05	756.0
303.05	739.0
304.15	370.0
310.15	199.0
314.15	420.0
315.05	805.0
316.05	444.0
320.95	199.0
323.05	1785.0
323.95	285.0
327.15	409.0
327.95	242.0
332.05	172.0
332.85	152.0
334.15	1500.0
334.85	398.0
340.85	195.0
345.95	256.0
351.95	635.0
353.15	649.0
354.15	849.0
355.25	259.0
365.05	2954.0
365.85	324.0
372.05	1191.0
373.15	179.0
384.05	236.0
391.15	154.0
401.15	233.0
401.95	203.0
403.15	247.0
403.95	187.0
404.45	294.0
420.95	448.0
421.85	303.0
422.95	2446.0
424.05	733.0
441.05	7441.0
442.05	46608.0
443.05	9198.0
444.05	750.0

Instrument :
BNA_G
ClientSampleId :
DFTPP403

303.05	590.0
314.05	577.0
314.95	929.0
316.05	657.0
321.05	256.0
323.05	2489.0
324.15	602.0
326.95	411.0
332.15	249.0
333.15	274.0
333.95	1460.0
335.25	393.0
341.05	467.0
346.15	482.0
346.95	158.0
352.05	799.0
352.85	358.0
354.05	648.0
359.05	180.0
365.05	3541.0
366.15	439.0
371.15	302.0
372.15	1326.0
373.15	324.0
382.85	276.0
400.95	173.0
402.05	309.0
403.15	350.0
404.25	282.0
421.15	587.0
422.15	499.0
423.05	3262.0
424.15	809.0
441.05	9782.0
442.05	62664.0
443.05	11726.0
443.95	1481.0

Instrument :
BNA_G
ClientSampleId :
DFTPP403

168.15	1894.0
168.95	433.0
171.15	401.0
172.05	595.0
173.05	612.0
174.15	847.0
175.15	1508.0
176.05	250.0
177.05	758.0
177.95	191.0
179.05	2831.0
180.05	2193.0
181.15	865.0
182.15	276.0
184.05	173.0
185.15	1568.0
186.15	10353.0
187.05	3536.0
188.05	335.0
189.15	594.0
191.15	433.0
192.05	695.0
193.15	1254.0
194.15	286.0
194.85	227.0
196.05	1236.0
198.05	56856.0
199.05	4571.0
200.05	365.0
201.25	304.0
203.05	746.0
204.05	2754.0
205.05	4909.0
206.15	17648.0
207.15	2352.0
208.15	910.0
209.05	216.0
210.15	423.0
210.95	456.0
215.25	275.0
216.05	454.0
217.05	5868.0
218.15	639.0
219.95	189.0
221.05	1487.0
222.15	396.0
223.05	1240.0
224.15	10325.0
225.15	2813.0
225.95	350.0
227.05	5273.0
228.15	849.0
229.05	1351.0
229.95	251.0
231.05	301.0
234.15	312.0
235.25	436.0
237.05	524.0
240.05	217.0
241.05	455.0
242.05	751.0
243.05	570.0
244.15	8500.0
245.15	1014.0
246.05	1775.0
247.15	543.0
249.15	384.0
252.95	271.0
255.05	50416.0
256.05	7553.0
257.05	444.0
258.05	4031.0
258.95	577.0
260.15	180.0
265.05	1453.0
266.15	221.0
271.05	238.0
271.95	212.0
273.15	1814.0
274.15	2988.0
275.15	19112.0
276.05	2547.0
277.05	1938.0
277.85	216.0
278.25	264.0
281.95	166.0
283.05	319.0
284.05	254.0
284.95	536.0
292.95	345.0
294.85	199.0
296.05	7967.0
297.05	1045.0
298.15	152.0
301.85	170.0

Instrument :
BNA_G
ClientSampleId :
DFTPP403

m/z	Abundance
38.15	422.0
39.15	2172.0
40.05	188.0
42.95	170.0
44.05	208.0
50.15	7131.0
51.15	23808.0
52.25	1256.0
56.15	914.0
57.05	2051.0
62.15	541.0
63.15	947.0
65.15	639.0
69.05	26848.0
70.05	174.0
73.25	219.0
74.15	2998.0
75.15	4033.0
76.15	1436.0
77.15	31272.0
78.15	1671.0
79.05	2350.0
80.15	1704.0
81.05	2629.0
82.05	894.0
83.05	597.0
85.15	238.0
86.15	967.0
87.15	256.0
88.05	152.0
91.05	486.0
91.95	482.0
93.15	2989.0
94.15	303.0
96.25	165.0
98.15	3652.0
99.05	2355.0
100.15	304.0
101.05	1048.0
103.15	423.0
104.15	582.0
105.05	489.0
107.15	10425.0
108.15	1793.0
109.15	288.0
110.05	15231.0
111.15	2263.0
112.15	310.0
113.25	223.0
116.15	631.0
117.15	9719.0
118.15	936.0
120.45	165.0
122.05	424.0
123.05	978.0
124.05	494.0
125.15	436.0
127.15	28704.0
128.15	2777.0
129.05	13530.0
130.05	1759.0
131.05	152.0
134.05	530.0
135.15	1372.0
136.05	423.0
137.15	653.0
138.05	177.0
140.05	259.0
141.15	2168.0
142.15	802.0
143.05	531.0
144.15	186.0
144.75	160.0
146.15	226.0
147.15	804.0
148.05	1660.0
149.15	468.0
150.15	214.0
153.05	579.0
154.05	550.0
155.05	1526.0
156.15	1663.0
157.25	214.0
158.05	348.0
159.05	311.0
160.05	571.0
161.05	915.0
162.05	237.0
164.95	666.0
166.15	516.0
167.15	3283.0

Instrument :
BNA_G
ClientSampleId :
DFTPP403