

Data Path : Z:\SVOASRV\HPCHEM1\BNA G\DATA\BG072518\  
 Data File : BG035902.D  
 Acq On : 26 Jul 2018 10:06  
 Operator : JU/SJ  
 Sample : J4107-08  
 Misc :  
 ALS Vial : 27 Sample Multiplier: 1

Instrument :  
 BNA\_G  
 ClientSampleId :  
 071918-TIPC-E-U-M

Integration Parameters: rteint.p  
 Integrator: RTE  
 Smoothing : ON Filtering: 5  
 Sampling : 1 Min Area: 3 % of largest Peak  
 Start Thrs: 0.2 Max Peaks: 100  
 Stop Thrs : 0 Peak Location: TOP

If leading or trailing edge < 100 prefer < Baseline drop else tangent >  
 Peak separation: 5

Method : Z:\SVOASRV\HPCHEM1\BNA G\METHODS\8270-BG071218.M  
 Title : ASP BNA STANDARDS FOR 5 POINT CALIBRATION

Signal : TIC

peak #	R.T. min	first scan	max scan	last scan	PK TY	peak height	corr. area	corr. % max.	% of total
1	5.604	387	394	408	rBV	162439	290837	9.54%	2.403%
2	7.196	658	665	677	rBV	102476	209996	6.89%	1.735%
3	7.560	719	727	741	rBV	337552	592817	19.45%	4.897%
4	8.024	799	806	815	rBV2	119010	210820	6.92%	1.742%
5	8.348	854	861	871	rVB	490599	861236	28.26%	7.114%
6	9.188	995	1004	1020	rBV	384020	732715	24.04%	6.053%
7	10.832	1277	1284	1291	rBV	130403	259986	8.53%	2.148%
8	13.270	1692	1699	1711	rBV	1161217	1893465	62.13%	15.641%
9	14.105	1836	1841	1851	rBV	30434	58955	1.93%	0.487%
10	14.651	1927	1934	1947	rBV2	259417	437227	14.35%	3.612%
11	15.937	2148	2153	2158	rVB	42212	51154	1.68%	0.423%
12	16.137	2179	2187	2202	rBV	631480	1064460	34.93%	8.793%
13	17.394	2394	2401	2409	rBV2	399532	640839	21.03%	5.294%
14	20.002	2838	2845	2853	rBV	2265825	3047552	100.00%	25.175%
15	21.295	3061	3065	3072	rBV5	25327	39396	1.29%	0.325%
16	21.653	3119	3126	3137	rBV2	453478	820652	26.93%	6.779%
17	23.128	3371	3377	3381	rBV5	20404	33394	1.10%	0.276%
18	23.927	3506	3513	3524	rVB5	24172	56597	1.86%	0.468%
19	24.855	3659	3671	3683	rBV2	275728	803335	26.36%	6.636%

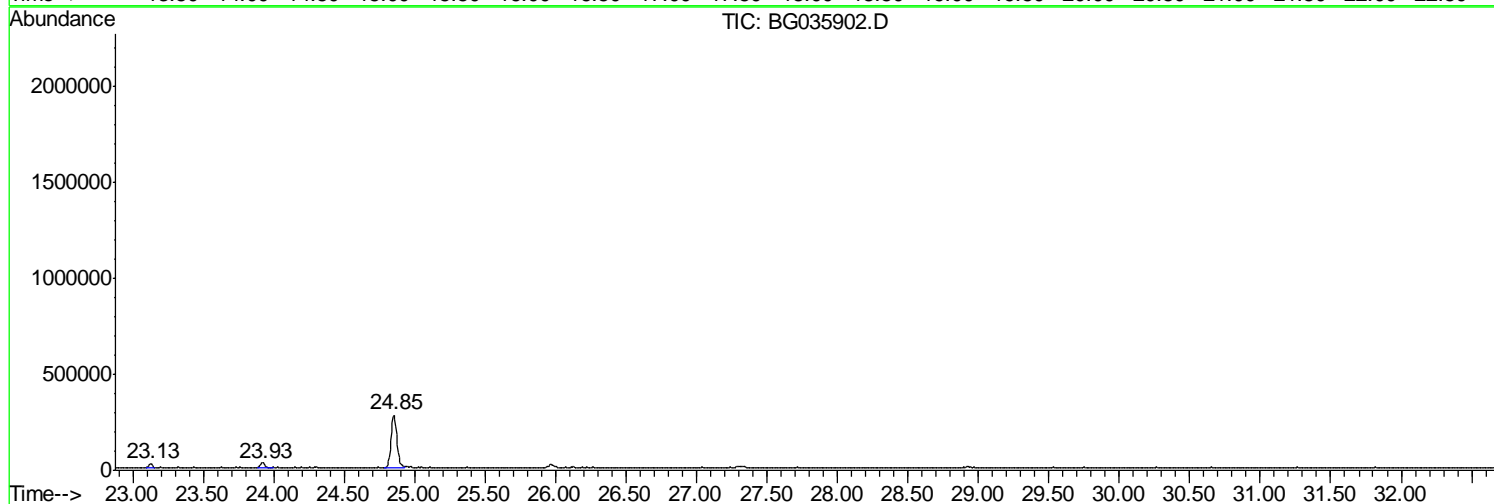
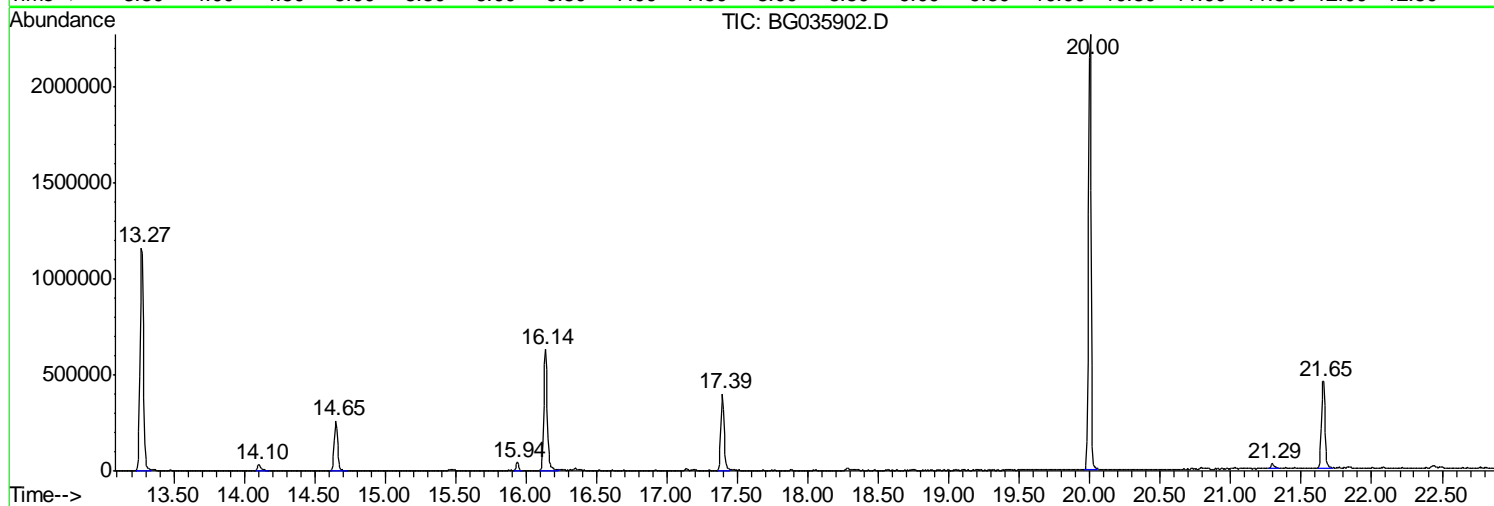
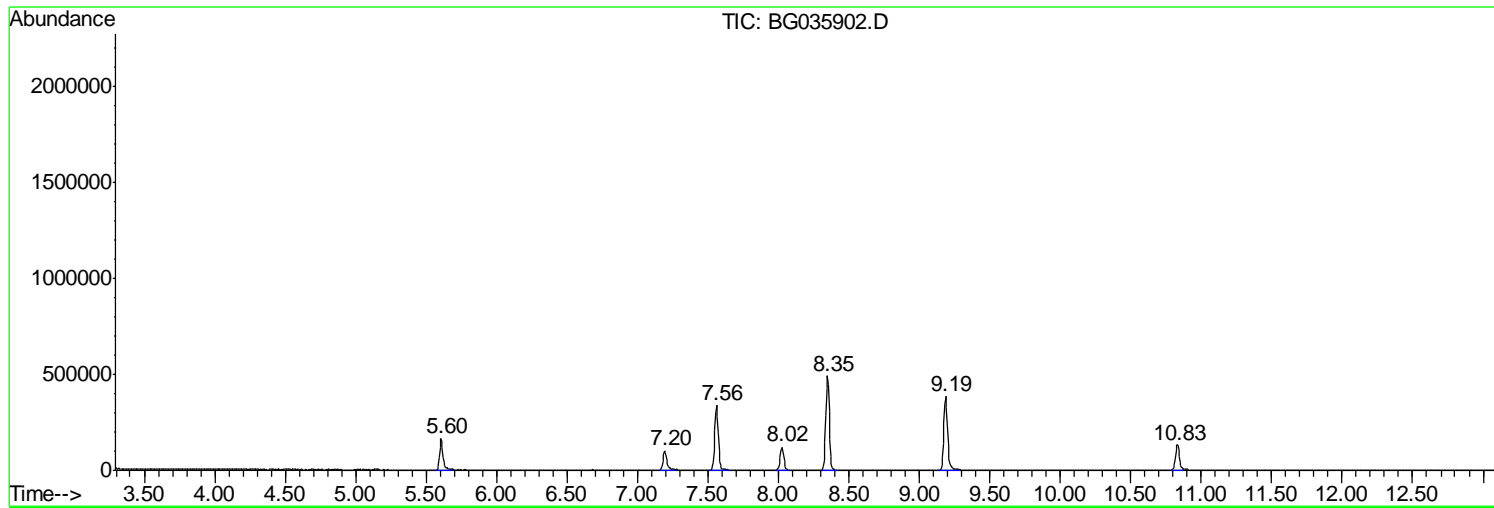
Sum of corrected areas: 12105433

Data Path : Z:\SVOASRV\HPCHEM1\BNA G\DATA\BG072518\  
Data File : BG035902.D  
Acq On : 26 Jul 2018 10:06  
Operator : JU/SJ  
Sample : J4107-08  
Misc :  
ALS Vial : 27 Sample Multiplier: 1

Instrument :  
BNA\_G  
ClientSampleId :  
071918-TIPC-E-U-M

Quant Method : Z:\SVOASRV\HPCHEM1\BNA G\METHODS\8270-BG071218.M  
Quant Title : ASP BNA STANDARDS FOR 5 POINT CALIBRATION

TIC Library : C:\Database\NIST11.L  
TIC Integration Parameters: LSCINT.P



Data Path : Z:\SVOASRV\HPCHEM1\BNA G\DATA\BG072518\  
 Data File : BG035902.D  
 Acq On : 26 Jul 2018 10:06  
 Operator : JU/SJ  
 Sample : J4107-08  
 Misc :  
 ALS Vial : 27 Sample Multiplier: 1

Instrument :  
 BNA\_G  
 ClientSampled :  
 071918-TIPC-E-U-M

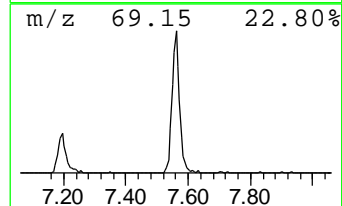
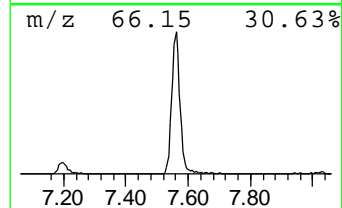
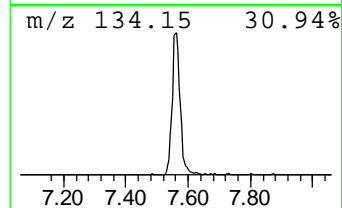
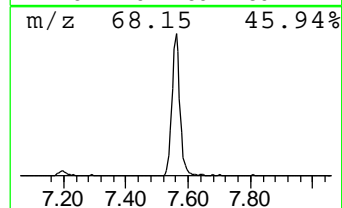
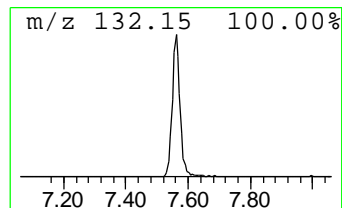
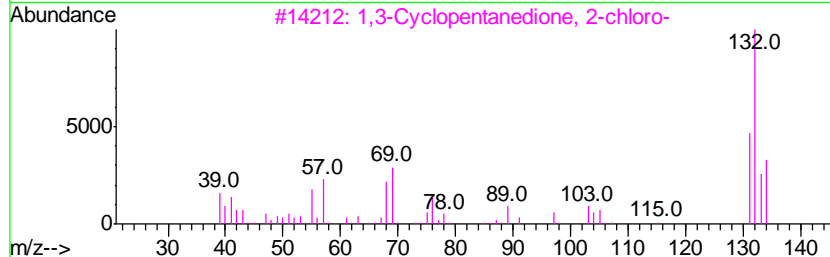
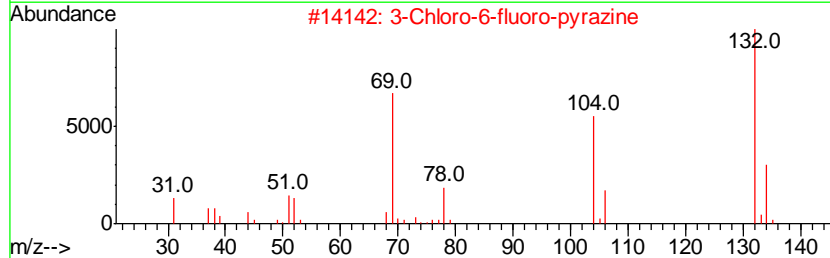
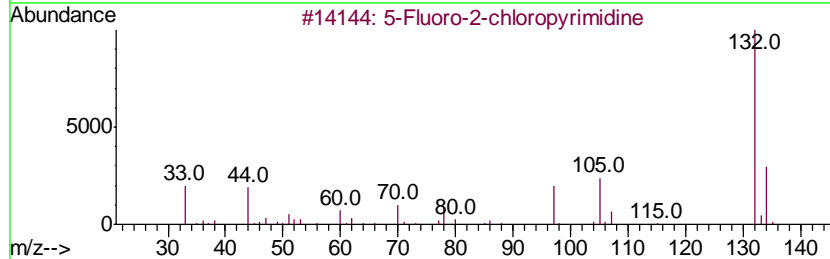
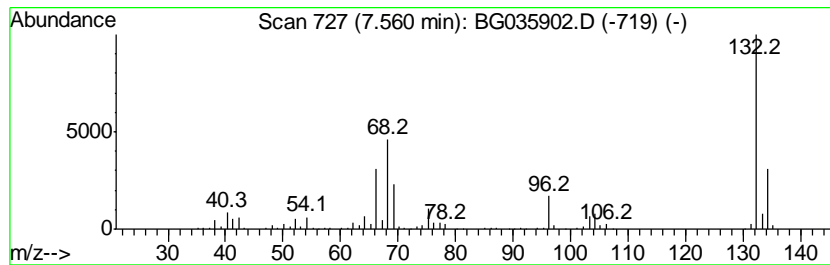
Quant Method : Z:\SVOASRV\HPCHEM1\BNA G\METHODS\8270-BG071218.M  
 Quant Title : ASP BNA STANDARDS FOR 5 POINT CALIBRATION

TIC Library : C:\Database\NIST11.L  
 TIC Integration Parameters: LSCINT.P

\*\*\*\*\*  
 Peak Number 1 unknown7.56 Concentration Rank 2

R.T.	EstConc	Area	Relative to ISTD	R.T.
7.56	56.24 ng	592817	1,4-Dichlorobenzene-d4	8.02

Hit#	of	Tentative ID	MW	MolForm	CAS#	Qual
1	5	5-Fluoro-2-chloropyrimidine	132	C4H2ClFN2	062802-42-0	27
2		3-Chloro-6-fluoro-pyrazine	132	C4H2ClFN2	1000146-10-7	27
3		1,3-Cyclopentanedione, 2-chloro-	132	C5H5ClO2	014203-19-1	17
4		1,3,5-Trifluorobenzene	132	C6H3F3	000372-38-3	12
5		5-Aminoindole	132	C8H8N2	005192-03-0	12



Data Path : Z:\SVOASRV\HPCHEM1\BNA G\DATA\BG072518\  
 Data File : BG035902.D  
 Acq On : 26 Jul 2018 10:06  
 Operator : JU/SJ  
 Sample : J4107-08  
 Misc :  
 ALS Vial : 27 Sample Multiplier: 1

Instrument :  
 BNA\_G  
 ClientSampleID :  
 071918-TIPC-E-U-M

Quant Method : Z:\SVOASRV\HPCHEM1\BNA G\METHODS\8270-BG071218.M  
 Quant Title : ASP BNA STANDARDS FOR 5 POINT CALIBRATION

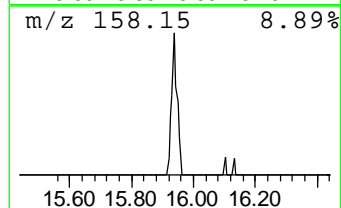
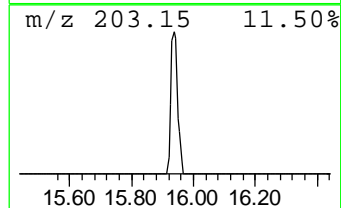
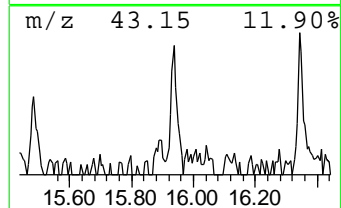
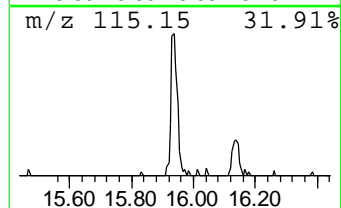
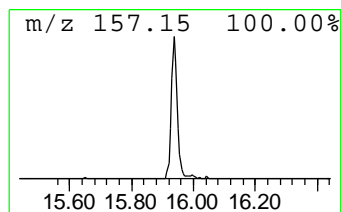
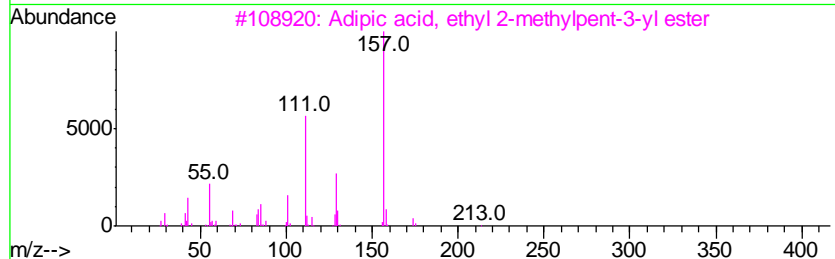
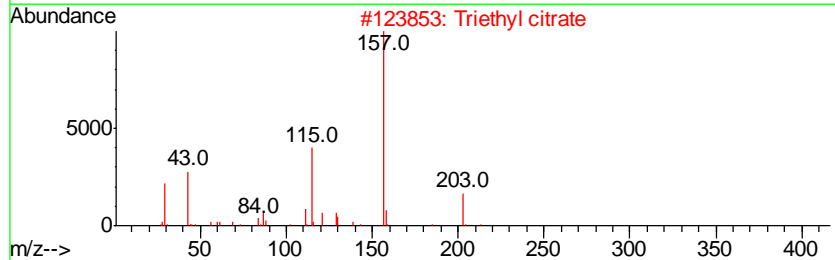
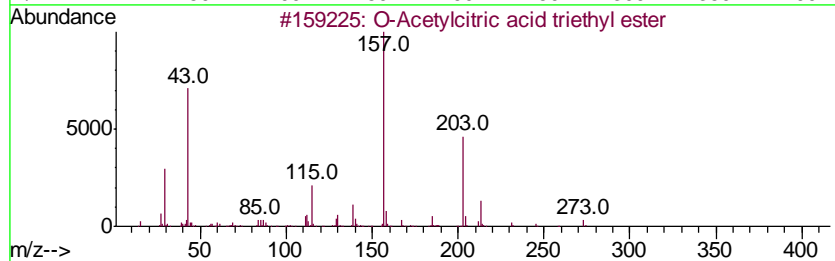
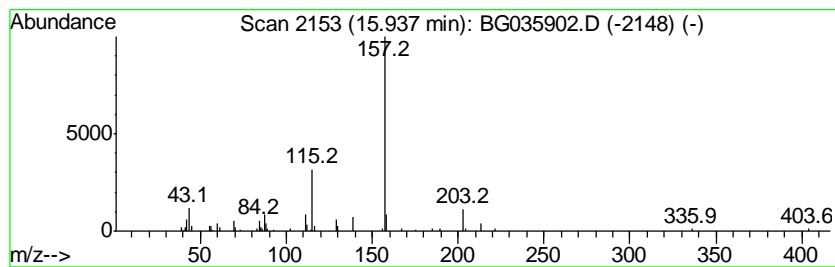
TIC Library : C:\Database\NIST11.L  
 TIC Integration Parameters: LSCINT.P

\*\*\*\*\*  
 Peak Number 3 O-Acetylcitric acid triethy... Concentration Rank 3

R.T.	EstConc	Area	Relative to ISTD	R.T.
15.94	2.34 ng	51154	Acenaphthene-d10	14.65

Hit#	of	Tentative ID	MW	MolForm	CAS#	Qual
1	5	O-Acetylcitric acid triethyl ester	318	C14H22O8	000077-89-4	64
2		Triethyl citrate	276	C12H20O7	000077-93-0	64
3		Adipic acid, ethyl 2-methylpent-...	258	C14H26O4	1000353-55-5	40
4		Quinoline, 2,6-dimethyl-	157	C11H11N	000877-43-0	40
5		3-Chloro2-fluorobenzoic acid, 3-...	370	C21H32ClFO2	1000338-64-6	40



Data Path : Z:\SVOASRV\HPCHEM1\BNA\_G\DATA\BG072518\  
Data File : BG035902.D  
Acq On : 26 Jul 2018 10:06  
Operator : JU/SJ  
Sample : J4107-08  
Misc :  
ALS Vial : 27 Sample Multiplier: 1

Instrument :  
BNA\_G  
ClientSampleId :  
071918-TIPC-E-U-M

Quant Method : Z:\SVOASRV\HPCHEM1\BNA\_G\METHODS\8270-BG071218.M  
Quant Title : ASP BNA STANDARDS FOR 5 POINT CALIBRATION

TIC Library : C:\Database\NIST11.L  
TIC Integration Parameters: LSCINT.P

TIC Top Hit name	RT	EstConc	Units	Response	--Internal Standard--			
					#	RT	Resp	Conc
unknown7.56	7.56	56.2	ng	592817	1	8.02	210820	20.0
O-Acetylcitric ac...	15.94	2.3	ng	51154	3	14.65	437227	20.0