

Data Path : Z:\svoasrv\HPCHEM1\BNA_G\Data\BG072523\
 Data File : BG058457.D
 Acq On : 25 Jul 2023 22:26
 Operator : CG/JU
 Sample : 03540-04
 Misc :
 ALS Vial : 16 Sample Multiplier: 1

Instrument :
 BNA_G
 ClientSampleId :

Quant Time: Jul 25 23:16:53 2023
 Quant Method : Z:\svoasrv\HPCHEM1\BNA_G\Methods\SFAM-EPA-BG071723.MA.M
 Quant Title : SVOA CALIBRATION
 QLast Update : Mon Jul 24 22:10:54 2023
 Response via : Initial Calibration

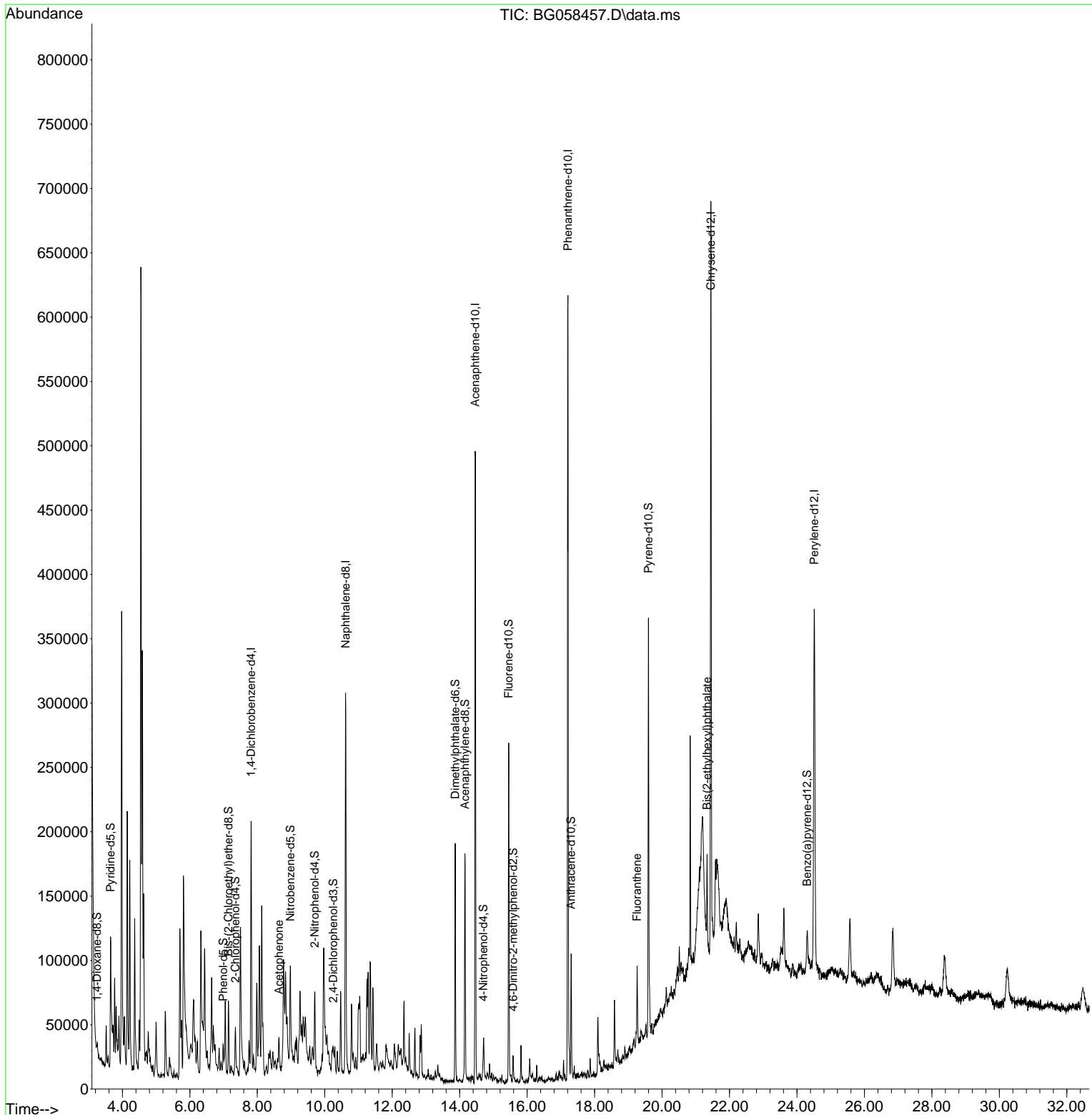
Compound	R.T.	QIon	Response	Conc	Units	Dev(Min)
Internal Standards						
1) 1,4-Dichlorobenzene-d4	7.814	152	57365	20.000	ng/ul	0.00
20) Naphthalene-d8	10.616	136	253291	20.000	ng/ul	0.00
38) Acenaphthene-d10	14.459	164	180314	20.000	ng/ul	0.00
64) Phenanthrene-d10	17.209	188	415625	20.000	ng/ul	0.00
79) Chrysene-d12	21.445	240	346640	20.000	ng/ul	0.00
88) Perylene-d12	24.512	264	266216	20.000	ng/ul	-0.01
System Monitoring Compounds						
3) 1,4-Dioxane-d8	3.243	96	2482	1.592	ng/uL	0.00
4) Pyridine-d5	3.648	84	41082	8.880	ng/ul	0.00
7) Phenol-d5	6.991	99	15907	2.923	ng/ul	0.00
9) Bis-(2-Chloroethyl)eth...	7.144	67	30196	8.878	ng/ul	0.00
11) 2-Chlorophenol-d4	7.350	132	15017	3.942	ng/ul	0.00
15) 4-Methylphenol-d8	8.537	113	843	0.203	ng/ul	0.00
21) Nitrobenzene-d5	8.977	128	16029	8.443	ng/ul	0.00
24) 2-Nitrophenol-d4	9.700	143	18264	8.812	ng/ul	0.00
28) 2,4-Dichlorophenol-d3	10.252	165	4750	1.195	ng/ul	0.00
31) 4-Chloroaniline-d4	10.769	131	333	0.058	ng/ul	0.01
46) Dimethylphthalate-d6	13.866	166	121613	8.746	ng/ul	0.00
49) Acenaphthylene-d8	14.154	160	121357	8.328	ng/ul	0.00
54) 4-Nitrophenol-d4	14.700	143	3177	1.513	ng/ul	0.02
60) Fluorene-d10	15.452	176	111887	9.719	ng/ul	0.00
65) 4,6-Dinitro-2-methylph...	15.581	200	5292	2.499	ng/ul	0.00
73) Anthracene-d10	17.303	188	58754	3.272	ng/ul	0.00
81) Pyrene-d10	19.594	212	173549	8.477	ng/ul	0.00
92) Benzo(a)pyrene-d12	24.300	264	31026	2.411	ng/ul	-0.01
Target Compounds						
16) Acetophenone	8.636	105	12822	1.814	ng/ul	94
80) Fluoranthene	19.259	202	34435	1.468	ng/ul#	95
86) Bis(2-ethylhexyl)phtha...	21.333	149	26091	1.960	ng/ul	92

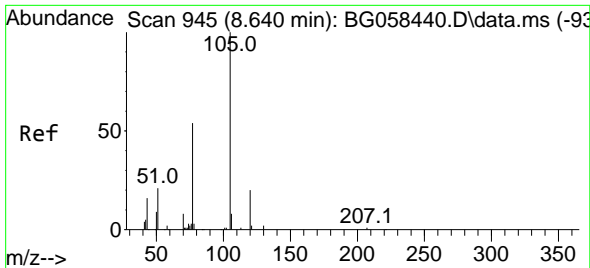
(#) = qualifier out of range (m) = manual integration (+) = signals summed

Data Path : Z:\svoasrv\HPCHEM1\BNA_G\Data\BG072523\
 Data File : BG058457.D
 Acq On : 25 Jul 2023 22:26
 Operator : CG/JU
 Sample : 03540-04
 Misc :
 ALS Vial : 16 Sample Multiplier: 1

Instrument :
 BNA_G
 ClientSampleId :

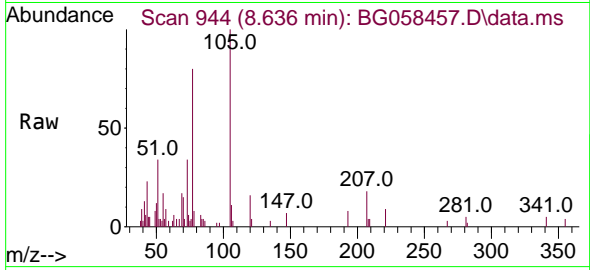
Quant Time: Jul 25 23:16:53 2023
 Quant Method : Z:\svoasrv\HPCHEM1\BNA_G\Methods\SFAM-EPA-BG071723.MA.M
 Quant Title : SVOA CALIBRATION
 QLast Update : Mon Jul 24 22:10:54 2023
 Response via : Initial Calibration





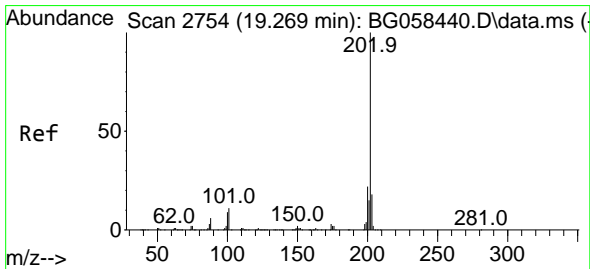
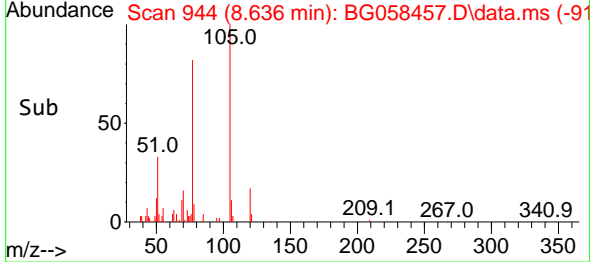
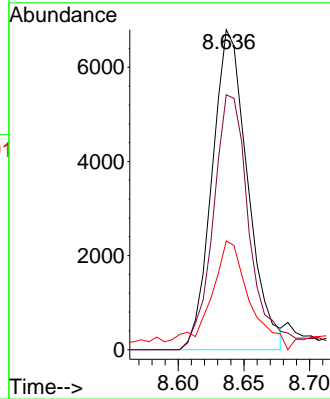
#16
 Acetophenone
 Concen: 1.814 ng/ul
 RT: 8.636 min Scan# 94
 Delta R.T. -0.004 min
 Lab File: BG058457.D
 Acq: 25 Jul 2023 22:26

Instrument :
 BNA_G
 ClientSampleId :



Tgt Ion:105 Resp: 12822

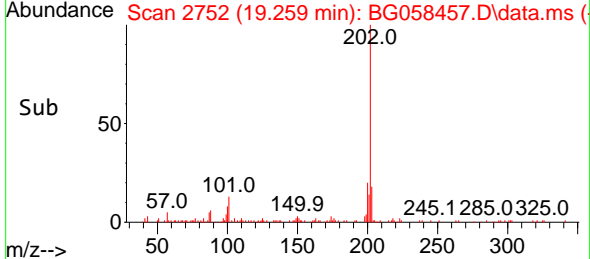
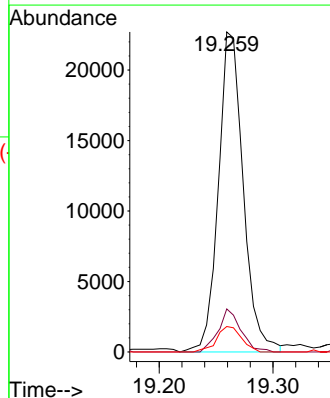
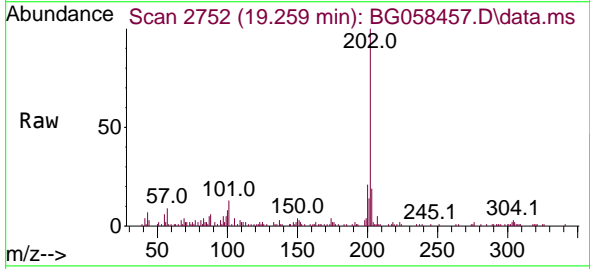
Ion	Ratio	Lower	Upper
105	100		
77	79.7	60.7	91.1
51	34.0	23.5	35.3

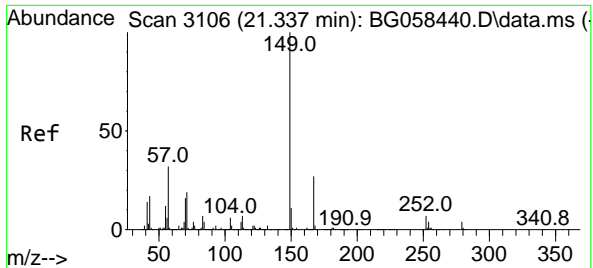


#80
 Fluoranthene
 Concen: 1.468 ng/ul
 RT: 19.259 min Scan# 2752
 Delta R.T. -0.010 min
 Lab File: BG058457.D
 Acq: 25 Jul 2023 22:26

Tgt Ion:202 Resp: 34435

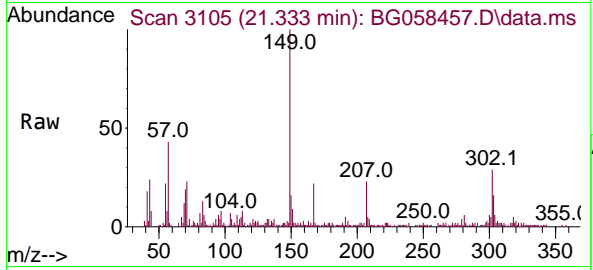
Ion	Ratio	Lower	Upper
202	100		
101	13.4	8.6	12.8#
100	7.9	7.2	10.8





#86
 Bis(2-ethylhexyl)phthalate
 Concen: 1.960 ng/ul
 RT: 21.333 min Scan# 31
 Delta R.T. -0.004 min
 Lab File: BG058457.D
 Acq: 25 Jul 2023 22:26

Instrument :
 BNA_G
 ClientSampleId :



Tgt Ion:149 Resp: 26091

Ion	Ratio	Lower	Upper
149	100		
167	22.1	21.6	32.4
279	3.9	3.0	4.4

