

Data Path : Z:\svoasrv\HPCHEM1\BNA_G\Data\BG072723\
 Data File : BG058501.D
 Acq On : 27 Jul 2023 14:52
 Operator : MA/JU
 Sample : PB154224BL
 Misc :
 ALS Vial : 7 Sample Multiplier: 1

Instrument :
 BNA_G
 ClientSampleId :
 SBLK224

Integration Parameters: LSCINT.P

Integrator: RTE
 Smoothing : OFF Filtering: 5
 Sampling : 1 Min Area: 0.1 % of largest Peak
 Start Thrs: 0.2 Max Peaks: 100
 Stop Thrs : 0 Peak Location: TOP

If leading or trailing edge < 100 prefer < Baseline drop else tangent >
 Peak separation: 5

Method : Z:\svoasrv\HPCHEM1\BNA_G\Methods\SFAM-EPA-BG071723.MA.M
 Title : SVOA CALIBRATION

Signal : TIC: BG058501.D\data.ms

peak #	R.T. min	first scan	max scan	last scan	PK TY	peak height	corr. area	corr. % max.	% of total
1	3.238	22	25	33	rVB	14150	22018	1.61%	0.157%
2	3.649	91	95	109	rBV	151477	271731	19.88%	1.943%
3	4.084	168	169	173	rBV4	2227	2162	0.16%	0.015%
4	6.981	656	662	677	rBV	168221	309450	22.64%	2.213%
5	7.145	682	690	699	rBV	141765	235082	17.20%	1.681%
6	7.345	717	724	737	rVV	170899	300233	21.96%	2.147%
7	7.815	797	804	812	rBV	164852	281232	20.57%	2.011%
8	8.027	836	840	845	rBV4	693	1397	0.10%	0.010%
9	8.526	918	925	935	rBV	201067	363408	26.58%	2.599%
10	8.978	995	1002	1012	rBV	160896	298162	21.81%	2.132%
11	9.701	1114	1125	1140	rBV	130417	244203	17.86%	1.747%
12	9.860	1149	1152	1155	rVB2	1008	1368	0.10%	0.010%
13	10.242	1210	1217	1231	rBV	183749	368729	26.97%	2.637%
14	10.365	1236	1238	1243	rVB3	993	1422	0.10%	0.010%
15	10.618	1273	1281	1291	rBV	257794	456267	33.38%	3.263%
16	10.759	1298	1305	1324	rBV	168781	372146	27.22%	2.662%
17	12.222	1549	1554	1560	rBV	1837	3146	0.23%	0.023%
18	13.356	1742	1747	1751	rBV2	2057	2812	0.21%	0.020%
19	13.867	1827	1834	1847	rBV	412722	628297	45.96%	4.494%
20	14.155	1876	1883	1899	rBV	484525	771302	56.42%	5.516%
21	14.460	1928	1935	1945	rBV	444689	692716	50.67%	4.954%
22	14.554	1950	1951	1957	rVB3	1263	1806	0.13%	0.013%
23	14.683	1968	1973	1996	rBV2	37574	148872	10.89%	1.065%
24	14.883	2005	2007	2014	rVB6	2135	3353	0.25%	0.024%
25	15.453	2098	2104	2117	rVV	656275	1007067	73.67%	7.203%
26	15.582	2120	2126	2141	rVV	90942	161137	11.79%	1.152%
27	15.694	2143	2145	2149	rVB4	2546	3544	0.26%	0.025%
28	17.204	2396	2402	2411	rBV	575752	906861	66.34%	6.486%
29	17.304	2413	2419	2435	rVB2	710431	1128963	82.58%	8.074%
30	19.055	2714	2717	2722	rBV2	1005	1773	0.13%	0.013%
31	19.166	2731	2736	2742	rVB	10628	14154	1.04%	0.101%
32	19.237	2742	2748	2753	rBV2	7114	11629	0.85%	0.083%
33	19.525	2795	2797	2799	rBV	1747	1800	0.13%	0.013%
34	19.595	2803	2809	2826	rBV	911128	1367086	100.00%	9.777%
35	19.965	2870	2872	2875	rVB3	1768	1431	0.10%	0.010%
36	20.124	2895	2899	2900	rBV4	2135	1607	0.12%	0.011%

Data Path : Z:\svoasrv\HPCHEM1\BNA_G\Data\BG072723\
 Data File : BG058501.D
 Acq On : 27 Jul 2023 14:52
 Operator : MA/JU
 Sample : PB154224BL
 Misc :
 ALS Vial : 7 Sample Multiplier: 1

Instrument :
 BNA_G
 ClientSampleId :
 SBLK224

Integration Parameters: LSCINT.P
 Integrator: RTE
 Smoothing : OFF Filtering: 5
 Sampling : 1 Min Area: 0.1 % of largest Peak
 Start Thrs: 0.2 Max Peaks: 100
 Stop Thrs : 0 Peak Location: TOP

If leading or trailing edge < 100 prefer < Baseline drop else tangent >
 Peak separation: 5

Method : Z:\svoasrv\HPCHEM1\BNA_G\Methods\SFAM-EPA-BG071723.MA.M
 Title : SVOA CALIBRATION

37	20.524	2965	2967	2969	rVV2	1686	1382	0.10%	0.010%
38	20.559	2972	2973	2977	rVV3	1565	1771	0.13%	0.013%
39	21.205	3081	3083	3086	rBV4	2374	2101	0.15%	0.015%
40	21.340	3103	3106	3111	rVB4	2901	4253	0.31%	0.030%
41	21.446	3117	3124	3141	rBV2	521432	956511	69.97%	6.841%
42	22.198	3249	3252	3258	rVB5	5193	7957	0.58%	0.057%
43	22.486	3299	3301	3304	rBV4	2539	3186	0.23%	0.023%
44	22.703	3336	3338	3341	rVB2	3582	3121	0.23%	0.022%
45	22.856	3360	3364	3369	rVB3	11442	18622	1.36%	0.133%
46	23.614	3487	3493	3500	rVB2	17591	37095	2.71%	0.265%
47	24.307	3600	3611	3628	rBV2	368887	1283761	93.90%	9.182%
48	24.513	3637	3646	3678	rVB2	304088	1046898	76.58%	7.487%
49	25.494	3810	3813	3814	rBV3	3854	3429	0.25%	0.025%
50	25.565	3816	3825	3839	rVB4	27913	91241	6.67%	0.653%
51	26.846	4035	4043	4049	rBV4	20672	62389	4.56%	0.446%
52	28.379	4294	4304	4316	rBV5	17284	61476	4.50%	0.440%
53	28.696	4356	4358	4360	rVB3	2630	1672	0.12%	0.012%
54	29.337	4465	4467	4468	rBV2	2632	1392	0.10%	0.010%
55	29.354	4468	4470	4473	rBV4	3127	2066	0.15%	0.015%
56	31.082	4762	4764	4765	rBV2	2400	1788	0.13%	0.013%
57	32.204	4953	4955	4956	rBV2	2136	1527	0.11%	0.011%

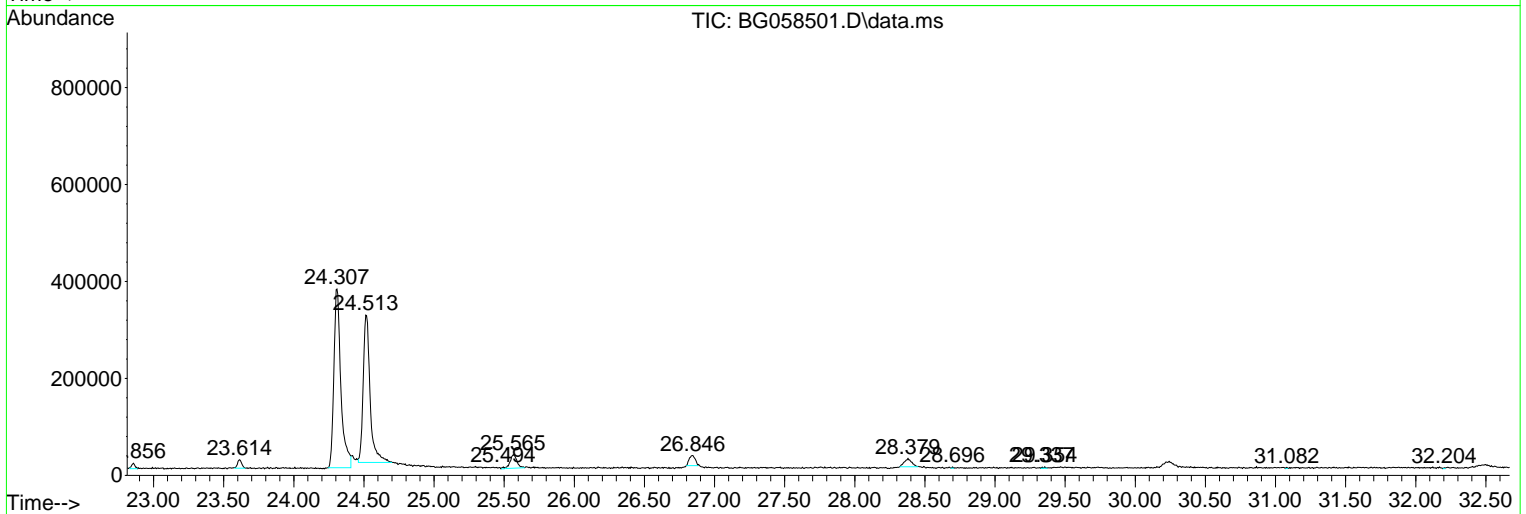
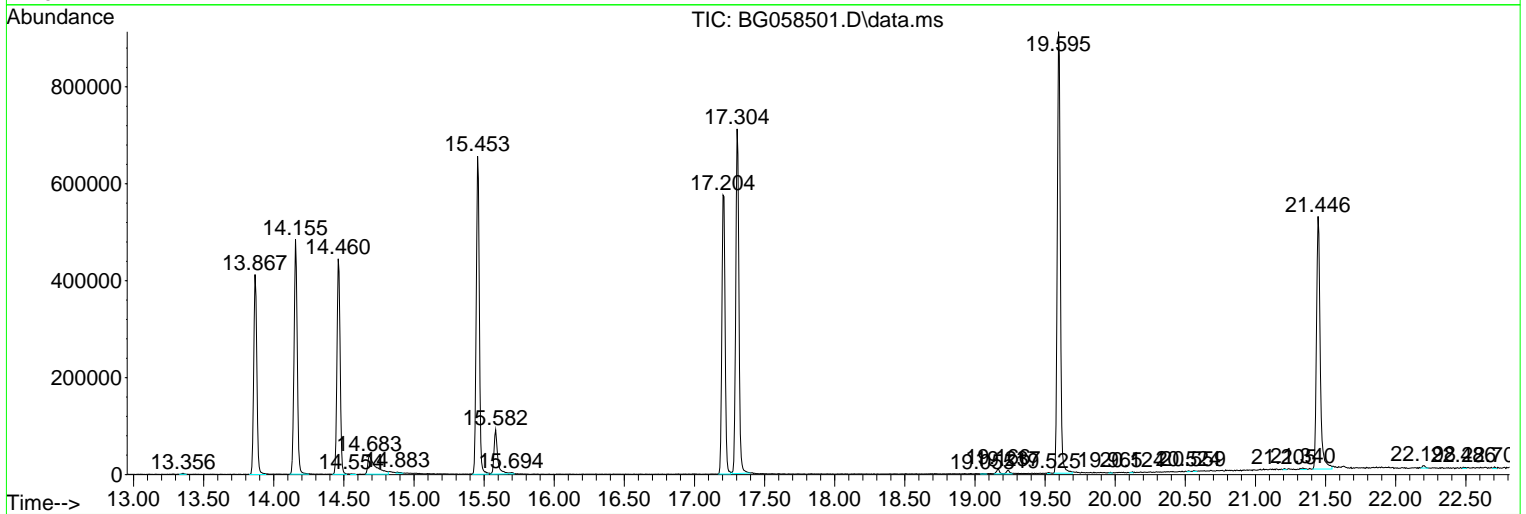
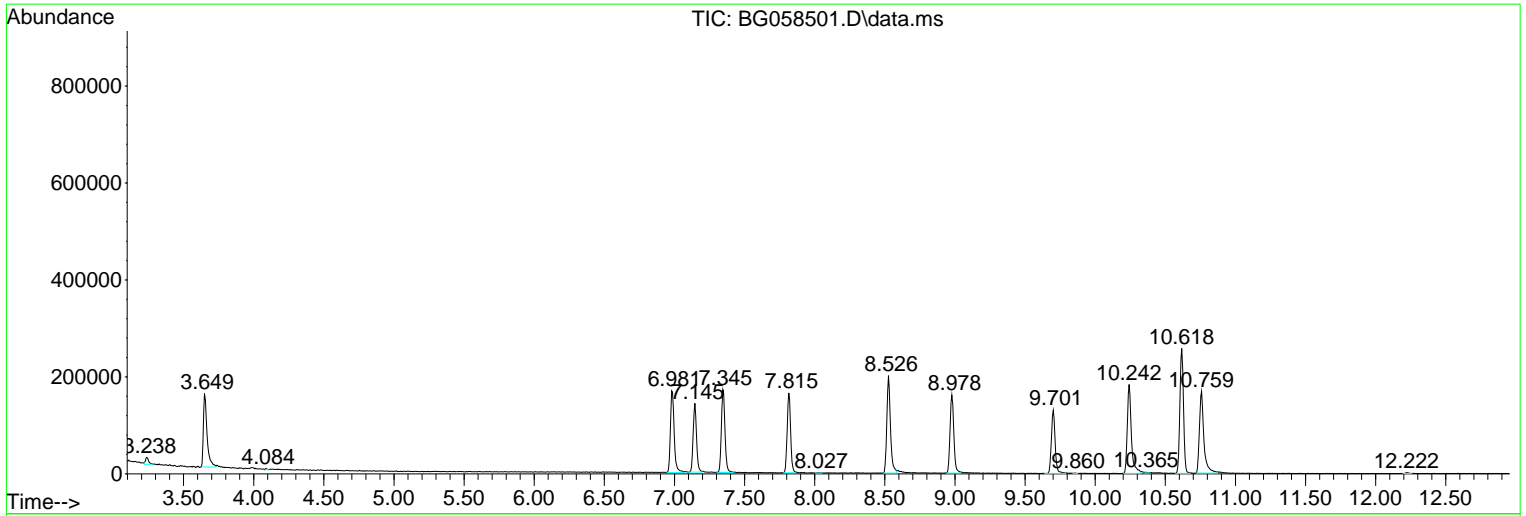
Sum of corrected areas: 13982004

Data Path : Z:\svoasrv\HPCHEM1\BNA_G\Data\BG072723\
 Data File : BG058501.D
 Acq On : 27 Jul 2023 14:52
 Operator : MA/JU
 Sample : PB154224BL
 Misc :
 ALS Vial : 7 Sample Multiplier: 1

Instrument :
 BNA_G
ClientSampleId :
 SBLK224

Quant Method : Z:\svoasrv\HPCHEM1\BNA_G\Methods\SFAM-EPA-BG071723.MA.M
 Quant Title : SVOA CALIBRATION

TIC Library : C:\DATABASE\NIST20.L
 TIC Integration Parameters: LSCINT.P



Library Search Compound Report

Data Path : Z:\svoasrv\HPCHEM1\BNA_G\Data\BG072723\
Data File : BG058501.D
Acq On : 27 Jul 2023 14:52
Operator : MA/JU
Sample : PB154224BL
Misc :
ALS Vial : 7 Sample Multiplier: 1

Instrument :
BNA_G
ClientSampleId :
SBLK224

Quant Method : Z:\svoasrv\HPCHEM1\BNA_G\Methods\SFAM-EPA-BG071723.MA.M
Quant Title : SVOA CALIBRATION

TIC Library : C:\DATABASE\NIST20.L
TIC Integration Parameters: LSCINT.P

No Library Search Compounds Detected

Data Path : Z:\svoasrv\HPCHEM1\BNA_G\Data\BG072723\
Data File : BG058501.D
Acq On : 27 Jul 2023 14:52
Operator : MA/JU
Sample : PB154224BL
Misc :
ALS Vial : 7 Sample Multiplier: 1

Instrument :
BNA_G
ClientSampleId :
SBLK224

Quant Method : Z:\svoasrv\HPCHEM1\BNA_G\Methods\SFAM-EPA-BG071723.MA.M
Quant Title : SVOA CALIBRATION

TIC Library : C:\DATABASE\NIST20.L
TIC Integration Parameters: LSCINT.P

TIC Top Hit name	RT	EstConc	Units	Response	#	RT	Resp	Conc
------------------	----	---------	-------	----------	---	----	------	------
