

Data Path : Z:\svoasrv\HPCHEM1\BNA_G\Data\BG073021\
 Data File : BG049599.D
 Acq On : 31 Jul 2021 6:00
 Operator : CG/JU
 Sample : M3122-19
 Misc :
 ALS Vial : 24 Sample Multiplier: 1

Instrument :
 BNA_G
 ClientSampled :
 BGES3

Integration Parameters: LSCINT.P

Integrator: RTE
 Smoothing : OFF Filtering: 5
 Sampling : 1 Min Area: 0.1 % of largest Peak
 Start Thrs: 0.2 Max Peaks: 100
 Stop Thrs : 0 Peak Location: TOP

If leading or trailing edge < 100 prefer < Baseline drop else tangent >
 Peak separation: 5

Method : Z:\SVOASRV\HPCHEM1\BNA_G\METHODS\SFAM-EPA-BG072421.M
 Title : SVOA CALIBRATION

Signal : TIC: BG049599.D\data.ms

peak #	R.T. min	first scan	max scan	last scan	PK TY	peak height	corr. area	corr. % max.	% of total
1	3.078	3	7	16	rVV2	36331	73390	9.58%	0.912%
2	3.155	16	20	31	rVB	77208	129899	16.96%	1.614%
3	3.431	63	67	68	rBV3	5376	5278	0.69%	0.066%
4	3.519	80	82	86	rVB3	1817	1869	0.24%	0.023%
5	3.854	135	139	153	rBV2	54491	104297	13.61%	1.296%
6	4.042	170	171	175	rBV3	1916	1649	0.22%	0.020%
7	4.723	284	287	289	rBV4	1390	1343	0.18%	0.017%
8	4.823	302	304	306	rVB2	1867	1459	0.19%	0.018%
9	5.228	370	373	375	rBV4	1354	1573	0.21%	0.020%
10	6.056	510	514	517	rBV3	1041	1483	0.19%	0.018%
11	6.820	642	644	647	rVB2	1436	1372	0.18%	0.017%
12	6.920	655	661	662	rBV3	1648	2175	0.28%	0.027%
13	7.196	701	708	716	rBV	117820	205267	26.79%	2.550%
14	7.366	731	737	745	rBV	72491	122590	16.00%	1.523%
15	7.572	765	772	779	rBV	108834	191755	25.03%	2.382%
16	8.048	846	853	860	rVB	85134	146421	19.11%	1.819%
17	8.753	965	973	980	rBV2	142366	253208	33.05%	3.145%
18	9.211	1045	1051	1059	rBV	113773	210920	27.53%	2.620%
19	9.757	1142	1144	1148	rVB2	1397	1475	0.19%	0.018%
20	9.939	1168	1175	1186	rBV2	110574	194151	25.34%	2.412%
21	10.486	1261	1268	1279	rBV	142547	266035	34.72%	3.305%
22	10.633	1288	1293	1299	rBV3	5944	12125	1.58%	0.151%
23	10.868	1323	1333	1339	rBV	112321	210017	27.41%	2.609%
24	10.997	1348	1355	1364	rBV	134577	253884	33.14%	3.154%
25	12.442	1598	1601	1602	rBV2	2268	2295	0.30%	0.029%
26	12.460	1602	1604	1605	rVB2	2025	1428	0.19%	0.018%
27	14.093	1876	1882	1892	rVV	333561	494164	64.50%	6.138%
28	14.386	1926	1932	1940	rVB	319009	508825	66.42%	6.321%
29	14.698	1978	1985	1991	rBV	190131	301678	39.38%	3.747%
30	14.892	2011	2018	2034	rBV	136823	249780	32.60%	3.103%
31	15.690	2147	2154	2160	rBV	444435	682309	89.06%	8.476%
32	15.802	2168	2173	2180	rBV	137757	217766	28.42%	2.705%
33	15.925	2191	2194	2199	rBV2	4658	7069	0.92%	0.088%
34	17.230	2413	2416	2421	rBV	1007	1555	0.20%	0.019%
35	17.447	2445	2453	2460	rBB	248367	380180	49.62%	4.723%
36	17.547	2462	2470	2481	rVB	511228	766127	100.00%	9.517%

Data Path : Z:\svoasrv\HPCHEM1\BNA_G\Data\BG073021\
 Data File : BG049599.D
 Acq On : 31 Jul 2021 6:00
 Operator : CG/JU
 Sample : M3122-19
 Misc :
 ALS Vial : 24 Sample Multiplier: 1

Instrument :
 BNA_G
 ClientSampleId :
 BGES3

Integration Parameters: LSCINT.P

Integrator: RTE
 Smoothing : OFF Filtering: 5
 Sampling : 1 Min Area: 0.1 % of largest Peak
 Start Thrs: 0.2 Max Peaks: 100
 Stop Thrs : 0 Peak Location: TOP

If leading or trailing edge < 100 prefer < Baseline drop else tangent >
 Peak separation: 5

Method : Z:\SVOASRV\HPCHEM1\BNA_G\METHODS\SFAM-EPA-BG072421.M
 Title : SVOA CALIBRATION

37	18.023	2548	2551	2554	rBV	1248	1343	0.18%	0.017%
38	18.328	2600	2603	2610	rBV2	2849	5828	0.76%	0.072%
39	19.233	2755	2757	2760	rBV2	1648	1778	0.23%	0.022%
40	19.374	2778	2781	2783	rBV	1916	2393	0.31%	0.030%
41	19.397	2783	2785	2789	rVB3	5596	6172	0.81%	0.077%
42	19.468	2794	2797	2802	rVV2	6306	8787	1.15%	0.109%
43	19.503	2802	2803	2808	rVB2	2353	1998	0.26%	0.025%
44	19.644	2824	2827	2828	rBV2	1771	1425	0.19%	0.018%
45	19.761	2843	2847	2848	rVB	1895	1664	0.22%	0.021%
46	19.832	2852	2859	2866	rBV	418213	590478	77.07%	7.335%
47	19.985	2883	2885	2888	rVB2	1552	1362	0.18%	0.017%
48	20.196	2920	2921	2923	rBV	1952	1438	0.19%	0.018%
49	20.314	2939	2941	2943	rBV2	1585	1570	0.20%	0.020%
50	20.349	2945	2947	2950	rVB2	2183	1845	0.24%	0.023%
51	20.460	2964	2966	2969	rBV2	1633	2343	0.31%	0.029%
52	20.549	2978	2981	2982	rBV2	2058	2022	0.26%	0.025%
53	20.637	2995	2996	2998	rBV2	3266	1854	0.24%	0.023%
54	20.719	3008	3010	3014	rVV3	2774	2668	0.35%	0.033%
55	20.801	3021	3024	3027	rBV3	6539	6136	0.80%	0.076%
56	20.954	3048	3050	3053	rBV2	1523	1945	0.25%	0.024%
57	21.054	3065	3067	3068	rBV	1959	1687	0.22%	0.021%
58	21.201	3090	3092	3096	rBV3	1899	3142	0.41%	0.039%
59	21.318	3111	3112	3114	rBV2	2006	1363	0.18%	0.017%
60	21.723	3174	3181	3192	rBV2	229323	403988	52.73%	5.018%
61	21.911	3211	3213	3217	rVB5	3595	3212	0.42%	0.040%
62	22.246	3268	3270	3273	rVB2	2758	2470	0.32%	0.031%
63	22.276	3273	3275	3276	rBV2	2909	1680	0.22%	0.021%
64	22.440	3301	3303	3305	rBV3	2824	2057	0.27%	0.026%
65	22.511	3314	3315	3316	rBV	2534	1514	0.20%	0.019%
66	22.951	3388	3390	3393	rBV3	2314	2855	0.37%	0.035%
67	23.380	3460	3463	3465	rBV4	3929	5250	0.69%	0.065%
68	23.621	3501	3504	3506	rBV3	2687	3401	0.44%	0.042%
69	23.762	3526	3528	3531	rBV4	1908	1716	0.22%	0.021%
70	24.050	3573	3577	3583	rVV7	9309	19501	2.55%	0.242%
71	24.097	3583	3585	3587	rVB3	3953	2769	0.36%	0.034%
72	24.120	3587	3589	3590	rBV2	2571	2132	0.28%	0.026%
73	24.778	3692	3701	3712	rVB2	161924	448582	58.55%	5.572%
74	25.007	3728	3740	3752	rVV2	141409	417543	54.50%	5.187%
75	25.342	3795	3797	3800	rBV2	2193	2198	0.29%	0.027%
76	25.847	3882	3883	3885	rBV2	2665	2352	0.31%	0.029%

Data Path : Z:\svoasrv\HPCHEM1\BNA_G\Data\BG073021\
 Data File : BG049599.D
 Acq On : 31 Jul 2021 6:00
 Operator : CG/JU
 Sample : M3122-19
 Misc :
 ALS Vial : 24 Sample Multiplier: 1

Instrument :
 BNA_G
 ClientSampleId :
 BGES3

Integration Parameters: LSCINT.P

Integrator: RTE
 Smoothing : OFF
 Sampling : 1
 Start Thrs: 0.2
 Stop Thrs : 0

Filtering: 5
 Min Area: 0.1 % of largest Peak
 Max Peaks: 100
 Peak Location: TOP

If leading or trailing edge < 100 prefer < Baseline drop else tangent >
 Peak separation: 5

Method : Z:\SVOASRV\HPCHEM1\BNA_G\METHODS\SFAM-EPA-BG072421.M
 Title : SVOA CALIBRATION

77	26.170	3934	3938	3939	rBV4	7485	9394	1.23%	0.117%
78	26.687	4024	4026	4029	rBV3	1956	1642	0.21%	0.020%
79	26.811	4046	4047	4050	rBV3	2343	1807	0.24%	0.022%
80	27.046	4085	4087	4090	rBV4	2519	2318	0.30%	0.029%
81	27.398	4145	4147	4148	rBV2	2731	1700	0.22%	0.021%
82	27.510	4161	4166	4168	rBV6	3432	4903	0.64%	0.061%
83	27.533	4168	4170	4171	rBV	4182	4021	0.52%	0.050%
84	28.732	4372	4374	4377	rBV4	2018	2006	0.26%	0.025%
85	28.785	4381	4383	4385	rBV	2372	2255	0.29%	0.028%
86	28.808	4385	4387	4388	rBV2	2659	1576	0.21%	0.020%
87	29.213	4450	4456	4458	rBV5	5957	9719	1.27%	0.121%
88	29.560	4513	4515	4519	rVB3	2486	2738	0.36%	0.034%
89	29.666	4530	4533	4534	rBV2	2283	1969	0.26%	0.024%
90	29.818	4557	4559	4563	rBV4	3506	3217	0.42%	0.040%
91	30.177	4617	4620	4622	rBV3	2243	2348	0.31%	0.029%
92	30.623	4694	4696	4697	rBV	2313	1402	0.18%	0.017%
93	30.888	4739	4741	4742	rBV	2580	1633	0.21%	0.020%
94	31.158	4785	4787	4788	rBV2	2115	1375	0.18%	0.017%
95	31.387	4824	4826	4828	rVB3	4517	3290	0.43%	0.041%
96	31.416	4828	4831	4832	rBV2	3167	3058	0.40%	0.038%
97	31.581	4857	4859	4860	rVB2	3454	1749	0.23%	0.022%
98	31.886	4909	4911	4913	rBV3	2749	1935	0.25%	0.024%
99	32.004	4929	4931	4934	rVB4	2230	1507	0.20%	0.019%
100	32.380	4993	4995	4996	rBV2	2332	1477	0.19%	0.018%

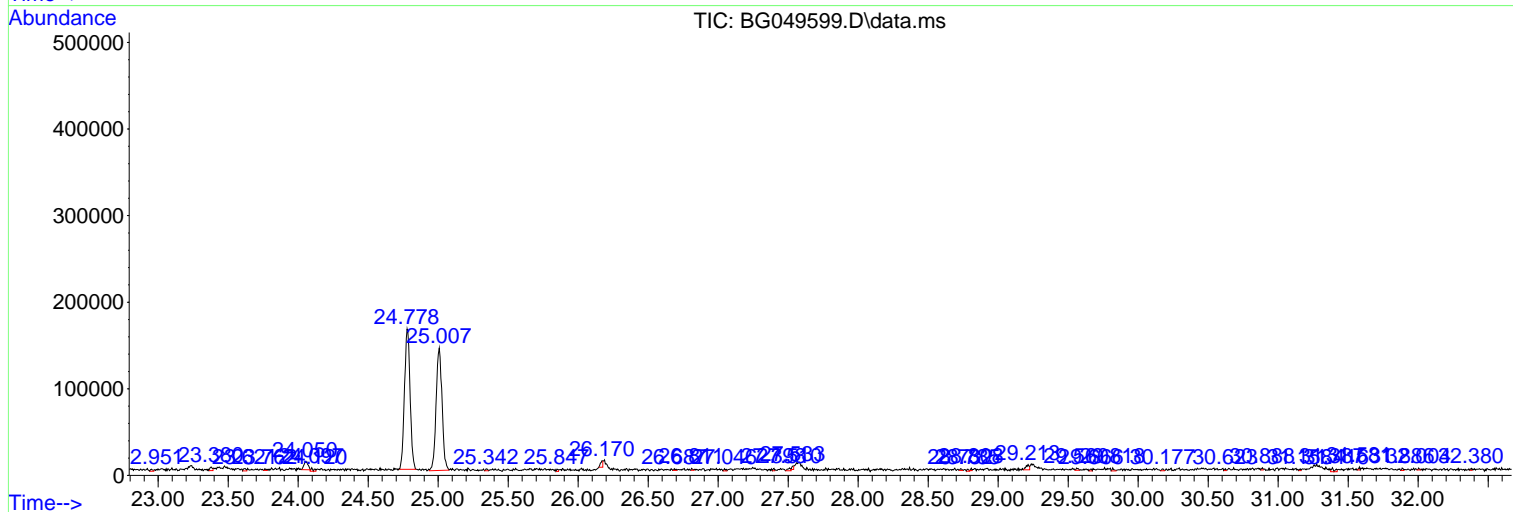
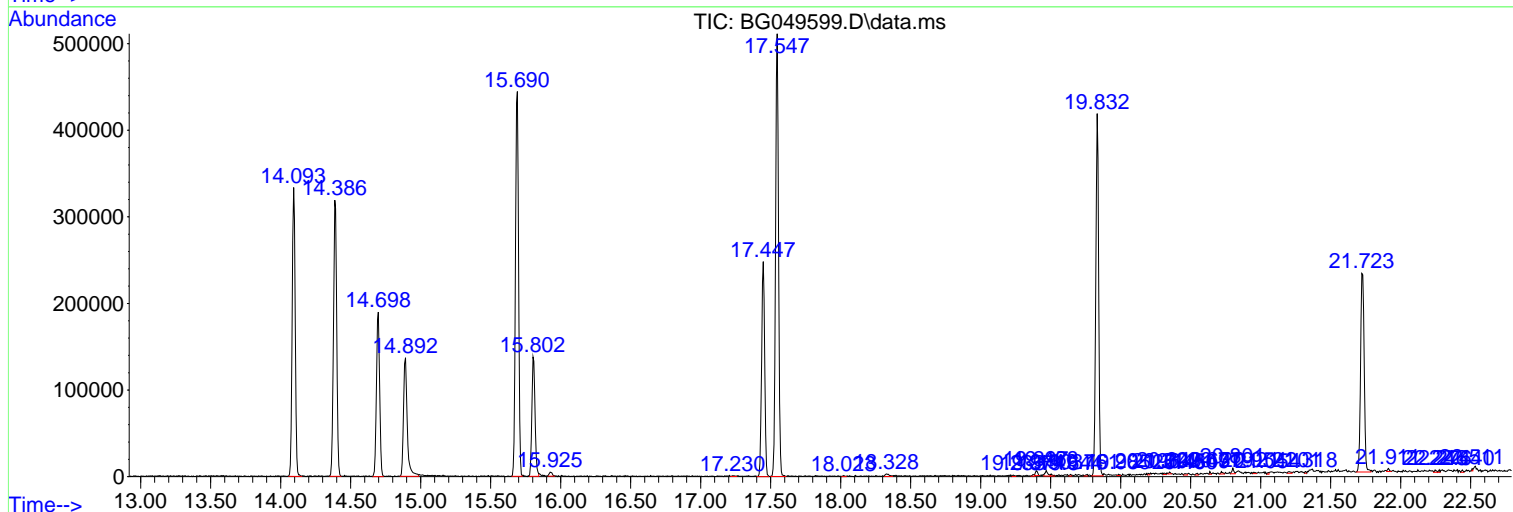
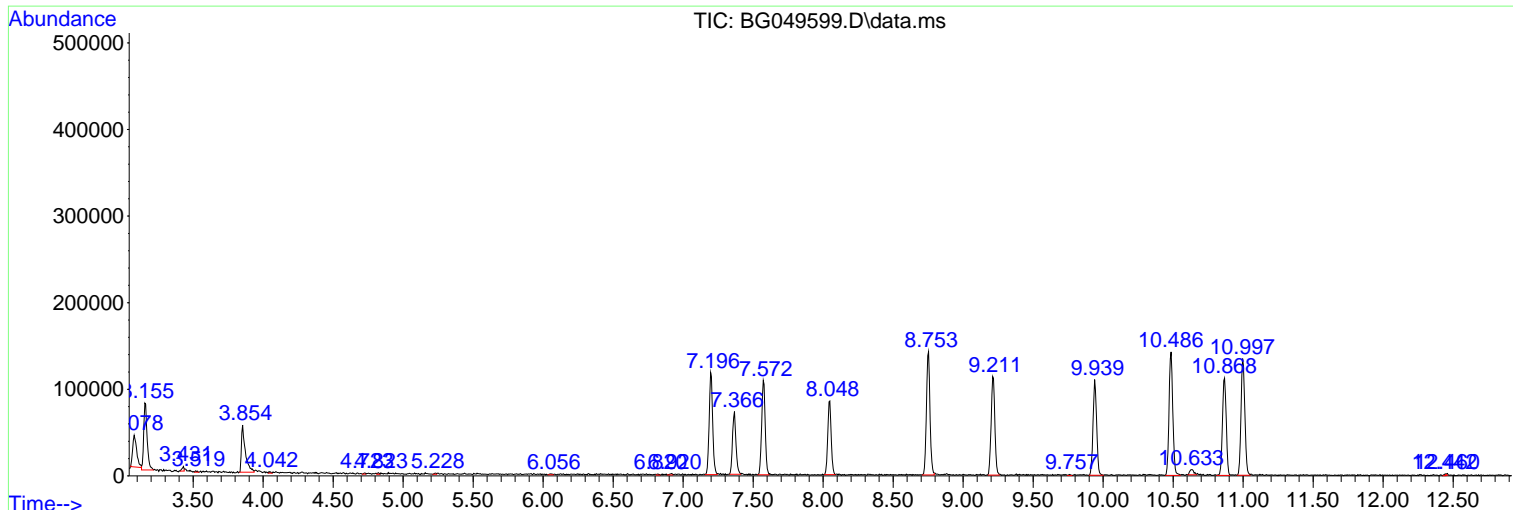
Sum of corrected areas: 8050311

Data Path : Z:\svoasrv\HPCHEM1\BNA_G\Data\BG073021\
 Data File : BG049599.D
 Acq On : 31 Jul 2021 6:00
 Operator : CG/JU
 Sample : M3122-19
 Misc :
 ALS Vial : 24 Sample Multiplier: 1

Instrument :
 BNA_G
 ClientSampleId :
 BGES3

Quant Method : Z:\SVOASRV\HPCHEM1\BNA_G\METHODS\SFAM-EPA-BG072421.M
 Quant Title : SVOA CALIBRATION

TIC Library : C:\DATABASE\NIST20.L
 TIC Integration Parameters: LSCINT.P



Data Path : Z:\svoasrv\HPCHEM1\BNA_G\Data\BG073021\
 Data File : BG049599.D
 Acq On : 31 Jul 2021 6:00
 Operator : CG/JU
 Sample : M3122-19
 Misc :
 ALS Vial : 24 Sample Multiplier: 1

Instrument :
 BNA_G
 ClientSampleId :
 BGES3

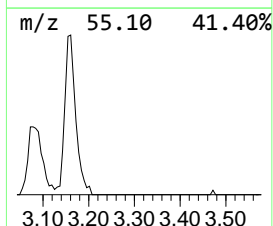
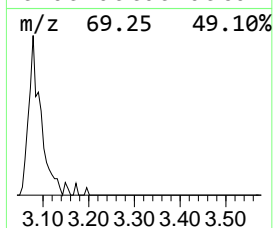
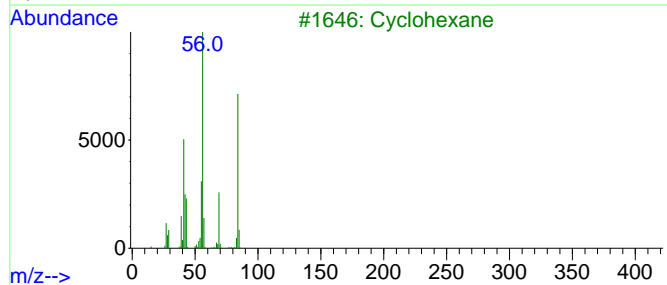
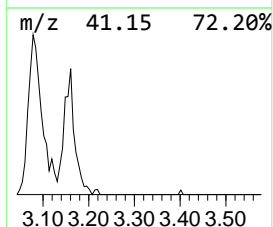
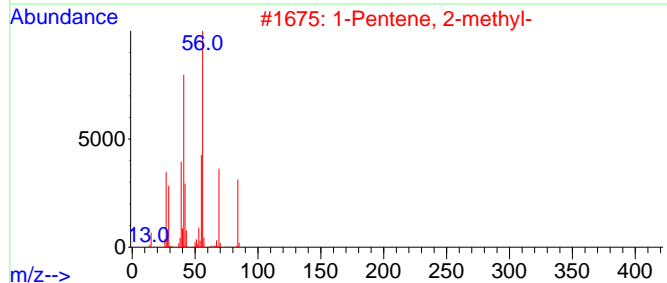
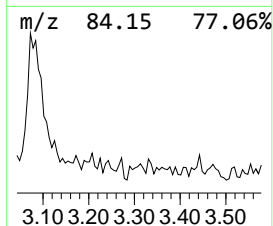
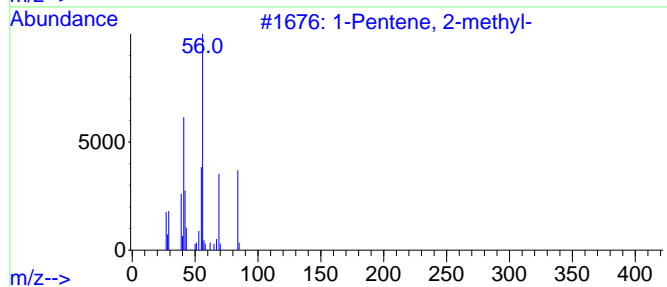
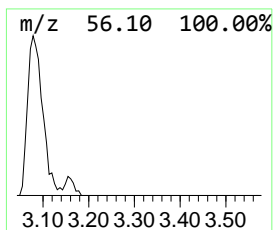
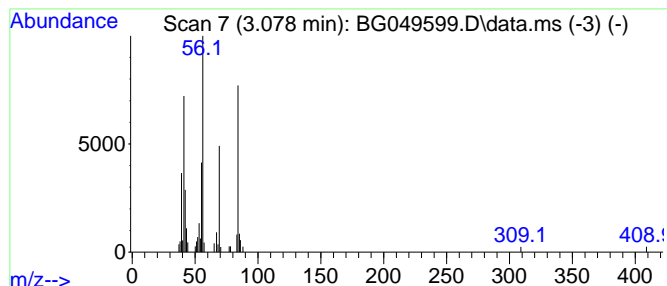
Quant Method : Z:\SVOASRV\HPCHEM1\BNA_G\METHODS\SFAM-EPA-BG072421.M
 Quant Title : SVOA CALIBRATION

TIC Library : C:\DATABASE\NIST20.L
 TIC Integration Parameters: LSCINT.P

 Peak Number 1 (DEL) Alkane: Straight-Chai... Concentration Rank 2

R.T.	EstConc	Area	Relative to ISTD	R.T.
3.078	10.02 ng/ul	73390	1,4-Dichlorobenzene-d4	8.048

Hit#	of 5	Tentative ID	MW	MolForm	CAS#	Qual
1		1-Pentene, 2-methyl-	84	C6H12	000763-29-1	91
2		1-Pentene, 2-methyl-	84	C6H12	000763-29-1	90
3		Cyclohexane	84	C6H12	000110-82-7	87
4		Cyclohexane	84	C6H12	000110-82-7	87
5		Cyclohexane	84	C6H12	000110-82-7	80



Data Path : Z:\svoasrv\HPCHEM1\BNA_G\Data\BG073021\
 Data File : BG049599.D
 Acq On : 31 Jul 2021 6:00
 Operator : CG/JU
 Sample : M3122-19
 Misc :
 ALS Vial : 24 Sample Multiplier: 1

Instrument :
 BNA_G
 ClientSampleId :
 BGES3

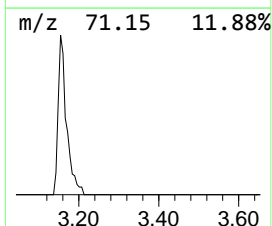
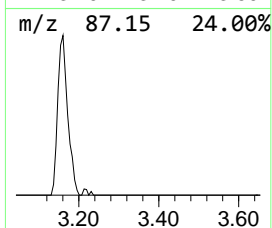
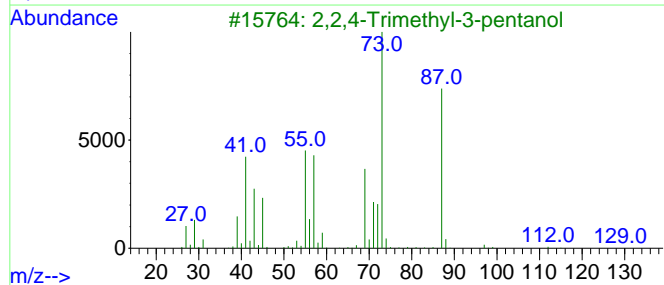
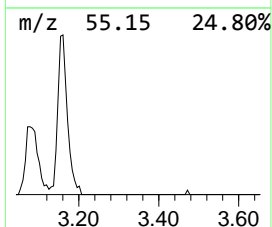
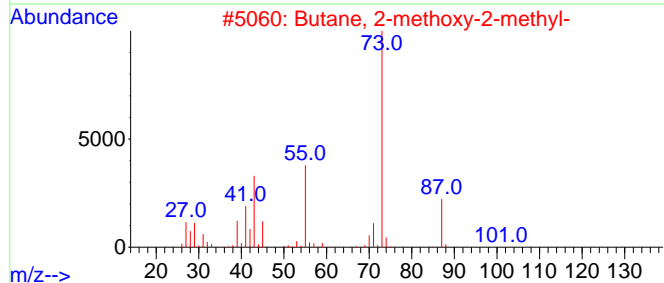
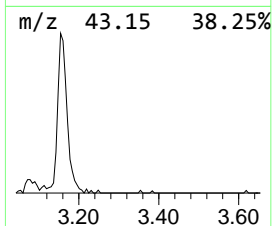
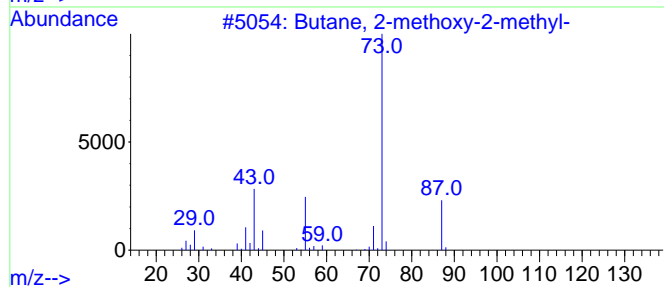
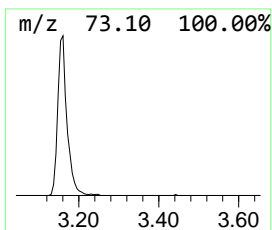
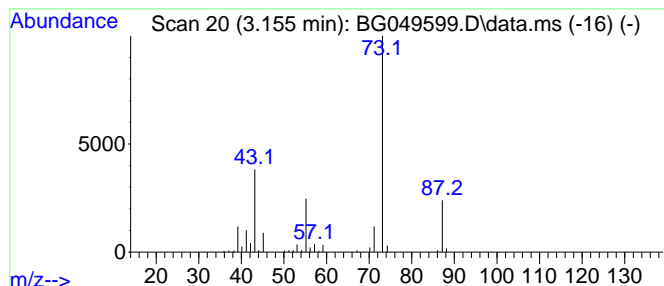
Quant Method : Z:\SVOASRV\HPCHEM1\BNA_G\METHODS\SFAM-EPA-BG072421.M
 Quant Title : SVOA CALIBRATION

TIC Library : C:\DATABASE\NIST20.L
 TIC Integration Parameters: LSCINT.P

 Peak Number 2 Butane, 2-methoxy-2-methyl- Concentration Rank 1

R.T.	EstConc	Area	Relative to ISTD	R.T.
3.155	17.74 ng/ul	129899	1,4-Dichlorobenzene-d4	8.048

Hit#	of	5	Tentative ID	MW	MolForm	CAS#	Qual
1			Butane, 2-methoxy-2-methyl-	102	C6H14O	000994-05-8	83
2			Butane, 2-methoxy-2-methyl-	102	C6H14O	000994-05-8	50
3			2,2,4-Trimethyl-3-pentanol	130	C8H18O	005162-48-1	37
4			Acetamide, N-ethyl-	87	C4H9NO	000625-50-3	16
5			N-Ethylformamide	73	C3H7NO	000627-45-2	9



Data Path : Z:\svoasrv\HPCHEM1\BNA_G\Data\BG073021\
Data File : BG049599.D
Acq On : 31 Jul 2021 6:00
Operator : CG/JU
Sample : M3122-19
Misc :
ALS Vial : 24 Sample Multiplier: 1

Instrument :
BNA_G
ClientSampleId :
BGES3

Quant Method : Z:\SVOASRV\HPCHEM1\BNA_G\METHODS\SFAM-EPA-BG072421.M
Quant Title : SVOA CALIBRATION

TIC Library : C:\DATABASE\NIST20.L
TIC Integration Parameters: LSCINT.P

TIC Top Hit name	RT	EstConc	Units	Response	--Internal Standard--			
					#	RT	Resp	Conc
(DEL) Alkane: S...	3.078	10.0	ng/u1	73390	1	8.048	146421	20.0
Butane, 2-metho...	3.155	17.7	ng/u1	129899	1	8.048	146421	20.0