

Data Path : Z:\svoasrv\HPCHEM1\BNA_G\Data\BG080223\
 Data File : BG058576.D
 Acq On : 2 Aug 2023 13:22
 Operator : MA/JU
 Sample : 03686-14MS
 Misc :
 ALS Vial : 9 Sample Multiplier: 1

Instrument :
 BNA_G
 ClientSampleId :
 SB-22-4-6-20230721MS

Quant Time: Aug 03 02:41:03 2023
 Quant Method : Z:\svoasrv\HPCHEM1\BNA_G\Methods\8270-BG072823.M
 Quant Title : ASP BNA STANDARDS FOR 5 POINT CALIBRATION
 QLast Update : Fri Jul 28 22:29:07 2023
 Response via : Initial Calibration

Compound	R.T.	QIon	Response	Conc	Units	Dev(Min)	
Internal Standards							
1) 1,4-Dichlorobenzene-d4	7.809	152	54683	20.000	ng	0.00	
21) Naphthalene-d8	10.612	136	239185	20.000	ng	0.00	
39) Acenaphthene-d10	14.460	164	163891	20.000	ng	0.00	
64) Phenanthrene-d10	17.210	188	364824	20.000	ng	0.00	
76) Chrysene-d12	21.452	240	304572	20.000	ng	0.00	
86) Perylene-d12	24.519	264	394180	20.000	ng	0.00	
System Monitoring Compounds							
5) 2-Fluorophenol	5.383	112	314654	87.950	ng	0.00	
7) Phenol-d6	6.987	99	425360	85.444	ng	0.00	
23) Nitrobenzene-d5	8.979	82	257404	52.867	ng	0.00	
42) 2,4,6-Tribromophenol	15.959	330	199082	74.110	ng	0.00	
45) 2-Fluorobiphenyl	13.080	172	572717	52.368	ng	0.00	
79) Terphenyl-d14	19.825	244	939886	58.032	ng	0.00	
Target Compounds							
2) 1,4-Dioxane	3.262	88	67488	38.929	ng		Qvalue 99
3) Pyridine	3.661	79	170811	36.139	ng		99
4) n-Nitrosodimethylamine	3.579	42	93523	46.700	ng		96
6) Aniline	7.139	93	169308	27.623	ng		100
8) 2-Chlorophenol	7.380	128	196695	56.042	ng		96
9) Benzaldehyde	6.951	77	123097	45.512	ng		98
10) Phenol	7.016	94	269370	55.392	ng		98
11) bis(2-Chloroethyl)ether	7.234	93	190449	49.676	ng		99
12) 1,3-Dichlorobenzene	7.704	146	193336	51.587	ng		98
13) 1,4-Dichlorobenzene	7.850	146	196409	52.193	ng		95
14) 1,2-Dichlorobenzene	8.162	146	191752	53.297	ng		98
15) Benzyl Alcohol	8.056	79	182596	57.837	ng		98
16) 2,2'-oxybis(1-Chloropr...	8.344	45	313826	50.393	ng		99
17) 2-Methylphenol	8.262	107	178235	50.127	ng		98
18) Hexachloroethane	8.890	117	73136	53.471	ng		96
19) n-Nitroso-di-n-propyla...	8.620	70	152782	47.513	ng		99
20) 3+4-Methylphenols	8.591	107	247506	51.461	ng		99
22) Acetophenone	8.638	105	305434	47.691	ng		98
24) Nitrobenzene	9.020	77	231456	46.760	ng		98
25) Isophorone	9.537	82	445435	44.278	ng		99
26) 2-Nitrophenol	9.731	139	109285	50.720	ng		97
27) 2,4-Dimethylphenol	9.795	122	172596	48.292	ng		99
28) bis(2-Chloroethoxy)met...	10.024	93	257962	47.119	ng		97
29) 2,4-Dichlorophenol	10.271	162	192281	51.816	ng		98
30) 1,2,4-Trichlorobenzene	10.477	180	211228	49.358	ng		99
31) Naphthalene	10.665	128	587881	46.633	ng		99
32) Benzoic acid	9.971	122	150083	54.341	ng		90
33) 4-Chloroaniline	10.782	127	82705	15.528	ng		97
34) Hexachlorobutadiene	10.947	225	133328	48.377	ng		99
35) Caprolactam	11.640	113	15316	11.177	ng		95
36) 4-Chloro-3-methylphenol	11.916	107	228286	49.731	ng		98
37) 2-Methylnaphthalene	12.281	142	401968	44.576	ng		98
38) 1-Methylnaphthalene	12.498	142	391271	45.646	ng		99
40) 1,2,4,5-Tetrachloroben...	12.651	216	242816	48.258	ng		99
41) Hexachlorocyclopentadiene	12.627	237	205355	87.200	ng		98
43) 2,4,6-Trichlorophenol	12.897	196	175141	50.607	ng		96

Data Path : Z:\svoasrv\HPCHEM1\BNA_G\Data\BG080223\
 Data File : BG058576.D
 Acq On : 2 Aug 2023 13:22
 Operator : MA/JU
 Sample : 03686-14MS
 Misc :
 ALS Vial : 9 Sample Multiplier: 1

Instrument :
 BNA_G
 ClientSampleId :
 SB-22-4-6-20230721MS

Quant Time: Aug 03 02:41:03 2023
 Quant Method : Z:\svoasrv\HPCHEM1\BNA_G\Methods\8270-BG072823.M
 Quant Title : ASP BNA STANDARDS FOR 5 POINT CALIBRATION
 QLast Update : Fri Jul 28 22:29:07 2023
 Response via : Initial Calibration

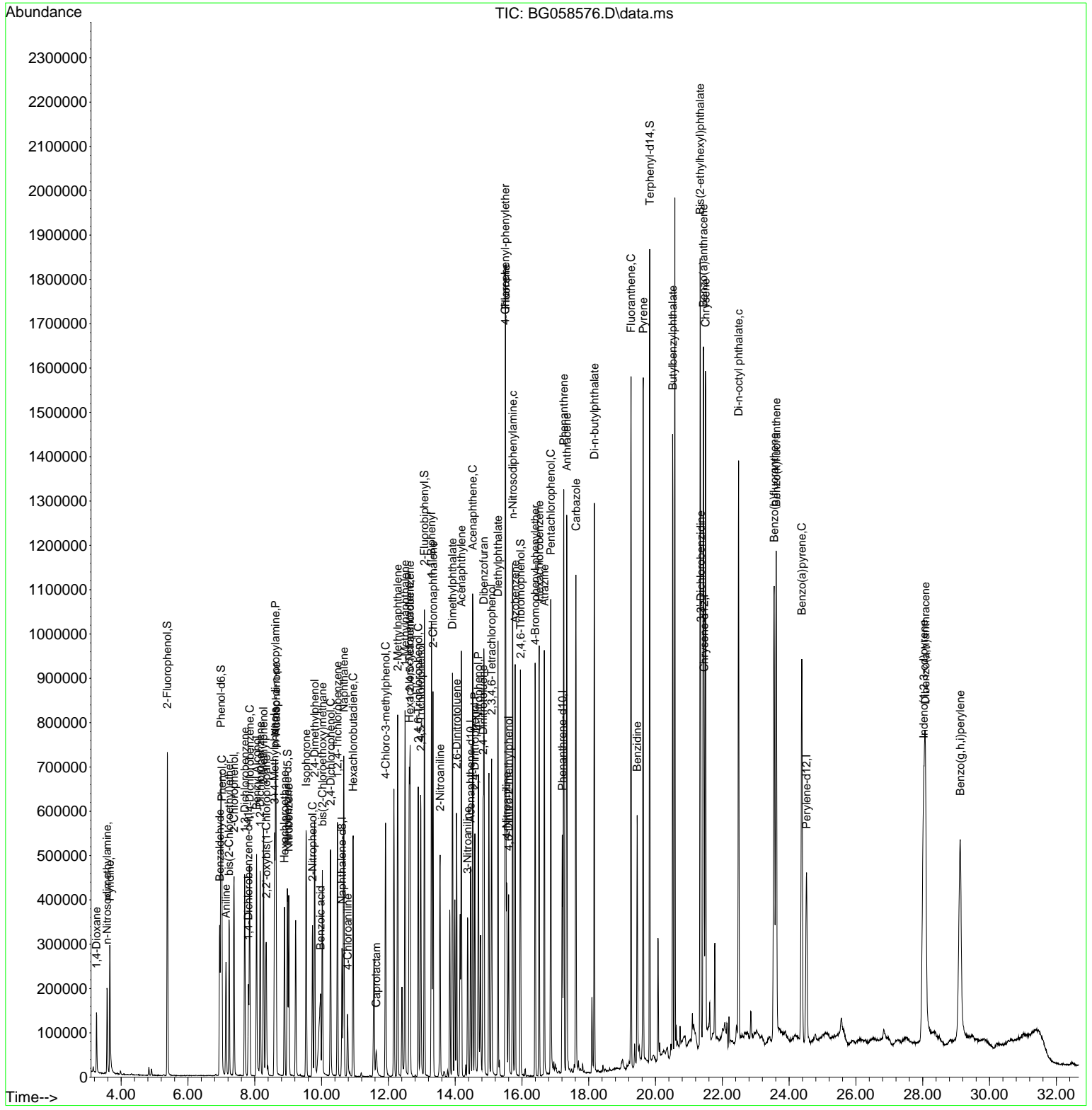
Compound	R.T.	QIon	Response	Conc	Units	Dev(Min)
44) 2,4,5-Trichlorophenol	12.968	196	191170	46.898	ng	98
46) 1,1'-Biphenyl	13.291	154	537536	47.759	ng	99
47) 2-Chloronaphthalene	13.338	162	430978	49.110	ng	98
48) 2-Nitroaniline	13.550	65	161254	48.141	ng	94
49) Acenaphthylene	14.184	152	701631	47.754	ng	99
50) Dimethylphthalate	13.920	163	618831	50.276	ng	99
51) 2,6-Dinitrotoluene	14.043	165	125910	46.621	ng	97
52) Acenaphthene	14.525	154	393408	46.340	ng	100
53) 3-Nitroaniline	14.372	138	92026	34.058	ng	100
54) 2,4-Dinitrophenol	14.590	184	125137	81.989	ng	98
55) Dibenzofuran	14.860	168	665290	45.605	ng	99
56) 4-Nitrophenol	14.695	139	187899	93.270	ng	96
57) 2,4-Dinitrotoluene	14.836	165	175257	46.807	ng	96
58) Fluorene	15.512	166	521952	45.039	ng	99
59) 2,3,4,6-Tetrachlorophenol	15.095	232	165747	47.651	ng	99
60) Diethylphthalate	15.283	149	551427	43.975	ng	99
61) 4-Chlorophenyl-phenyle...	15.500	204	290781	45.006	ng	98
62) 4-Nitroaniline	15.541	138	117292	45.823	ng	96
63) Azobenzene	15.794	77	555309	44.961	ng	99
65) 4,6-Dinitro-2-methylph...	15.600	198	95884	47.666	ng	99
66) n-Nitrosodiphenylamine	15.724	169	458618	48.299	ng	98
67) 4-Bromophenyl-phenylether	16.399	248	198302	47.924	ng	97
68) Hexachlorobenzene	16.517	284	224405	51.179	ng	98
69) Atrazine	16.669	200	182866	57.049	ng	99
70) Pentachlorophenol	16.863	266	235086	88.579	ng	98
71) Phenanthrene	17.251	178	803414	46.436	ng	99
72) Anthracene	17.339	178	828904	46.692	ng	99
73) Carbazole	17.615	167	758653	48.461	ng	100
74) Di-n-butylphthalate	18.168	149	942305	48.056	ng	100
75) Fluoranthene	19.266	202	943297	45.388	ng	99
77) Benzidine	19.449	184	399492	86.497	ng	99
78) Pyrene	19.631	202	982230	47.387	ng	100
80) Butylbenzylphthalate	20.512	149	439175	51.582	ng	99
81) Benzo(a)anthracene	21.429	228	1008876	48.133	ng	99
82) 3,3'-Dichlorobenzidine	21.352	252	249874	35.259	ng	99
83) Chrysene	21.493	228	937172	46.633	ng	99
84) Bis(2-ethylhexyl)phtha...	21.335	149	630991	50.715	ng	100
85) Di-n-octyl phthalate	22.486	149	1084916	49.597	ng	100
87) Indeno(1,2,3-cd)pyrene	28.027	276	1284657	48.989	ng	99
88) Benzo(b)fluoranthene	23.550	252	1059585	49.561	ng	98
89) Benzo(k)fluoranthene	23.614	252	1018647	47.428	ng	99
90) Benzo(a)pyrene	24.378	252	957534	45.606	ng	98
91) Dibenzo(a,h)anthracene	28.080	278	1077027	49.671	ng	100
92) Benzo(g,h,i)perylene	29.120	276	1027087	47.238	ng	99

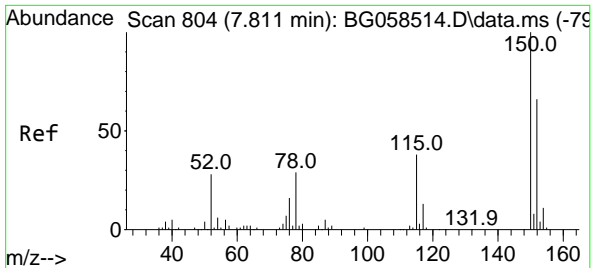
(#) = qualifier out of range (m) = manual integration (+) = signals summed

Data Path : Z:\svoasrv\HPCHEM1\BNA_G\Data\BG080223\
 Data File : BG058576.D
 Acq On : 2 Aug 2023 13:22
 Operator : MA/JU
 Sample : 03686-14MS
 Misc :
 ALS Vial : 9 Sample Multiplier: 1

Instrument :
 BNA_G
ClientSampleId :
 SB-22-4-6-20230721MS

Quant Time: Aug 03 02:41:03 2023
 Quant Method : Z:\svoasrv\HPCHEM1\BNA_G\Methods\8270-BG072823.M
 Quant Title : ASP BNA STANDARDS FOR 5 POINT CALIBRATION
 QLast Update : Fri Jul 28 22:29:07 2023
 Response via : Initial Calibration

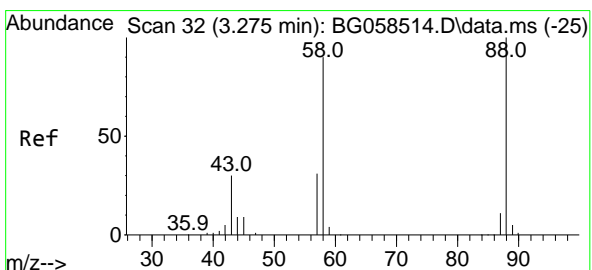
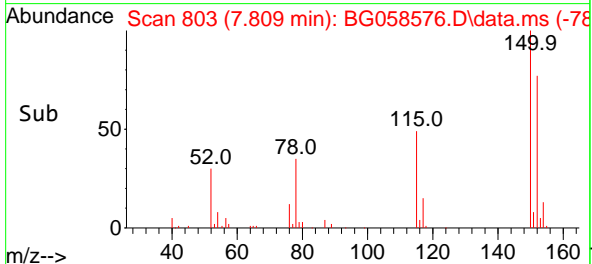
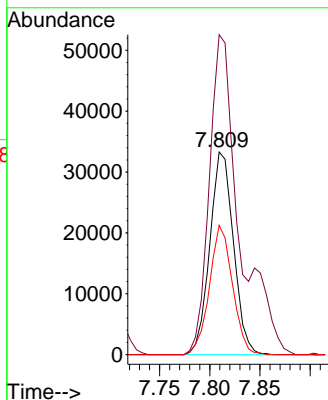
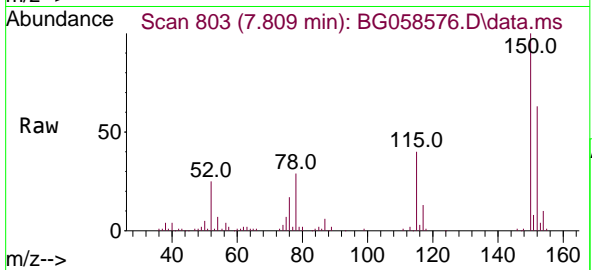




#1
 1,4-Dichlorobenzene-d4
 Concen: 20.000 ng
 RT: 7.809 min Scan# 80
 Delta R.T. -0.002 min
 Lab File: BG058576.D
 Acq: 2 Aug 2023 13:22

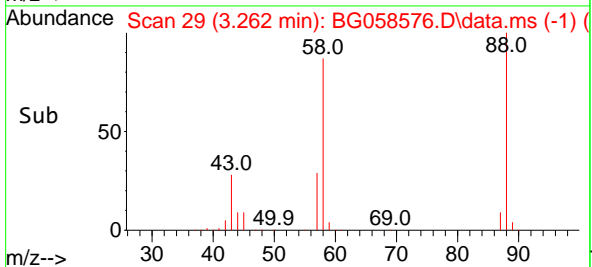
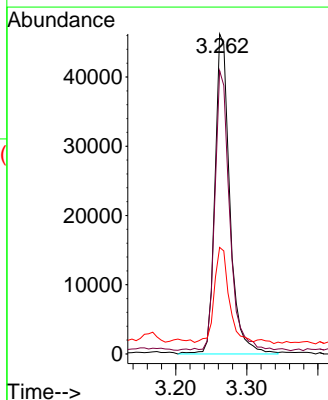
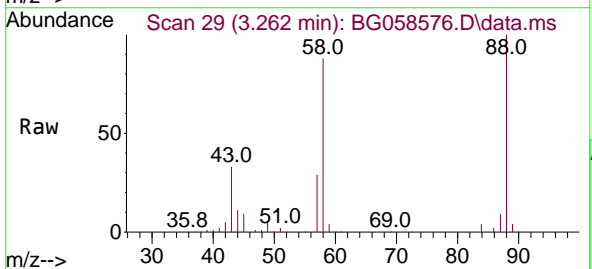
Instrument :
 BNA_G
 ClientSampleId :
 SB-22-4-6-20230721MS

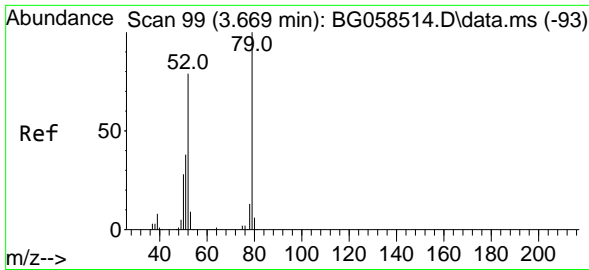
Tgt Ion:152 Resp: 54683
 Ion Ratio Lower Upper
 152 100
 150 157.9 120.5 180.7
 115 63.7 45.9 68.9



#2
 1,4-Dioxane
 Concen: 38.929 ng
 RT: 3.262 min Scan# 29
 Delta R.T. -0.014 min
 Lab File: BG058576.D
 Acq: 2 Aug 2023 13:22

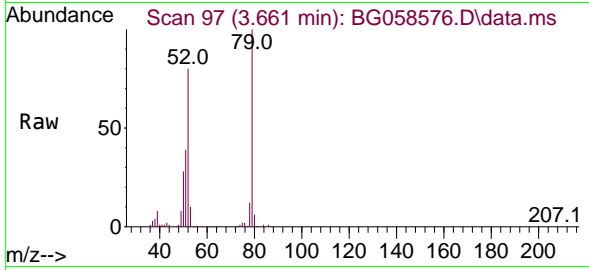
Tgt Ion: 88 Resp: 67488
 Ion Ratio Lower Upper
 88 100
 58 87.2 68.9 103.3
 43 29.1 22.9 34.3



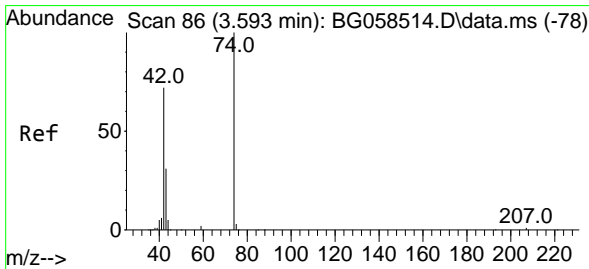
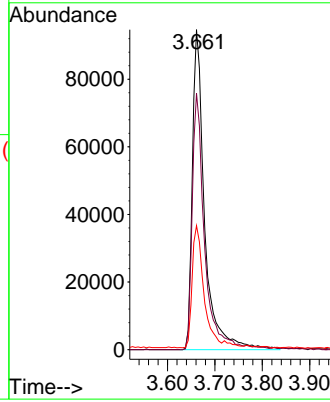
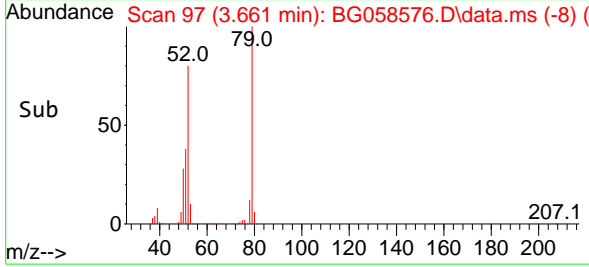


#3
 Pyridine
 Concen: 36.139 ng
 RT: 3.661 min Scan# 91
 Delta R.T. -0.008 min
 Lab File: BG058576.D
 Acq: 2 Aug 2023 13:22

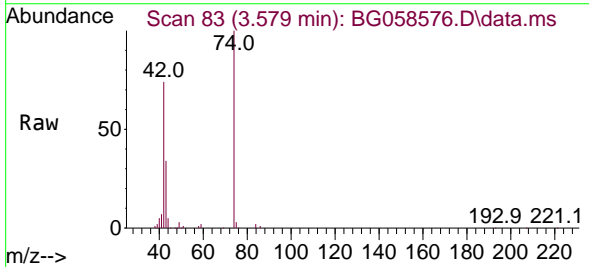
Instrument :
 BNA_G
 ClientSampleId :
 SB-22-4-6-20230721MS



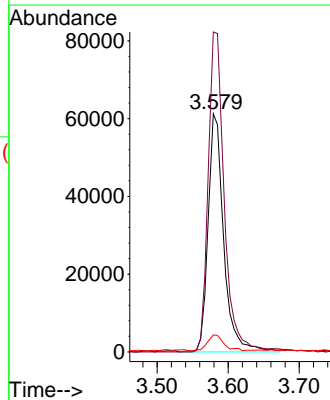
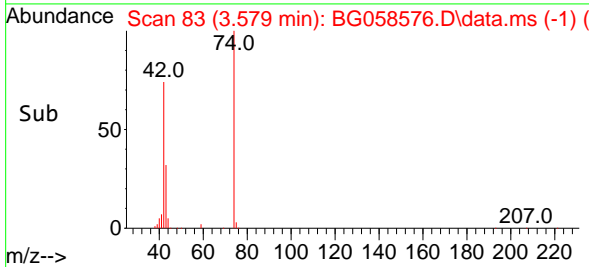
Tgt Ion: 79 Resp: 170811
 Ion Ratio Lower Upper
 79 100
 52 80.1 63.2 94.8
 51 38.8 31.9 47.9

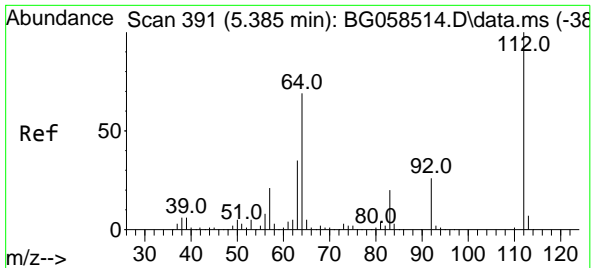


#4
 n-Nitrosodimethylamine
 Concen: 46.700 ng
 RT: 3.579 min Scan# 83
 Delta R.T. -0.014 min
 Lab File: BG058576.D
 Acq: 2 Aug 2023 13:22



Tgt Ion: 42 Resp: 93523
 Ion Ratio Lower Upper
 42 100
 74 134.4 111.5 167.3
 44 7.1 5.4 8.2



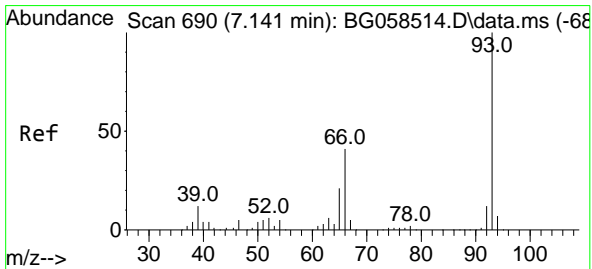
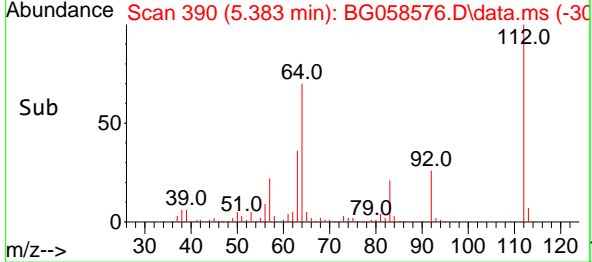
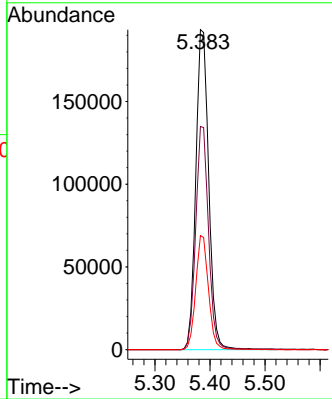
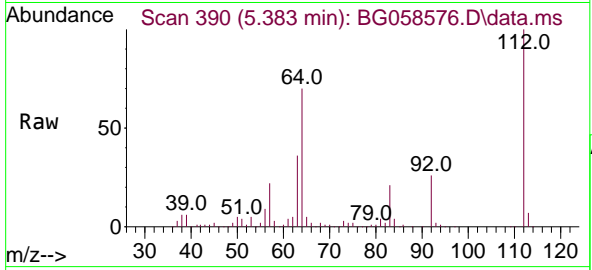


#5
 2-Fluorophenol
 Concen: 87.950 ng
 RT: 5.383 min Scan# 391
 Delta R.T. -0.002 min
 Lab File: BG058576.D
 Acq: 2 Aug 2023 13:22

Instrument : BNA_G
 ClientSampleId : SB-22-4-6-20230721MS

Tgt Ion: 112 Resp: 314654

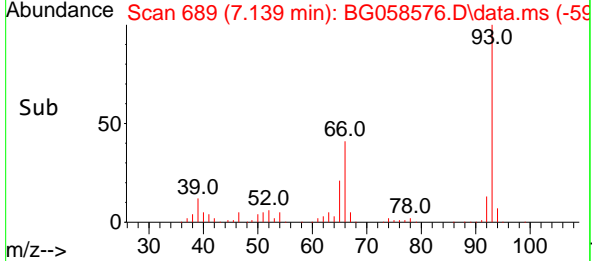
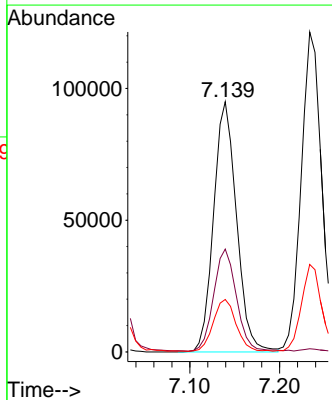
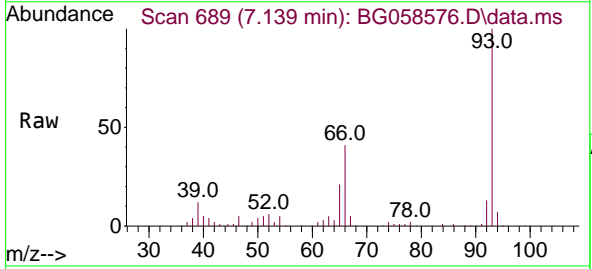
Ion	Ratio	Lower	Upper
112	100		
64	69.7	55.3	82.9
63	35.6	28.3	42.5

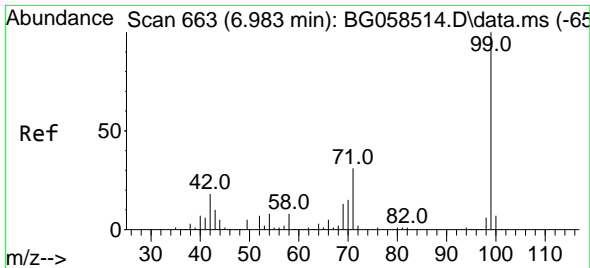


#6
 Aniline
 Concen: 27.623 ng
 RT: 7.139 min Scan# 689
 Delta R.T. -0.002 min
 Lab File: BG058576.D
 Acq: 2 Aug 2023 13:22

Tgt Ion: 93 Resp: 169308

Ion	Ratio	Lower	Upper
93	100		
66	41.1	33.1	49.7
65	20.9	17.0	25.4



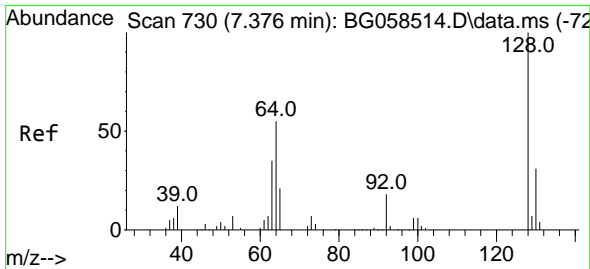
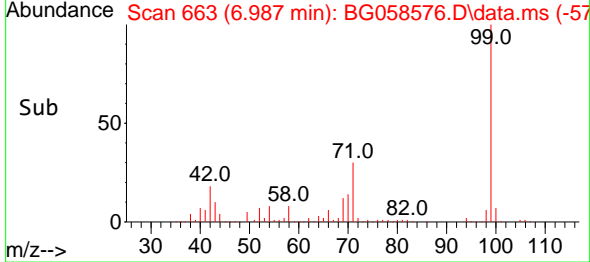
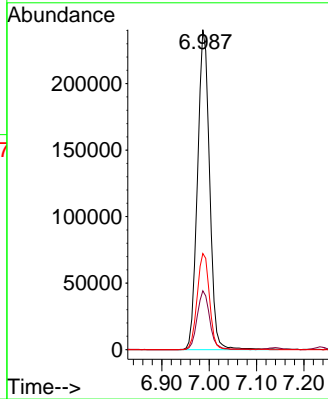
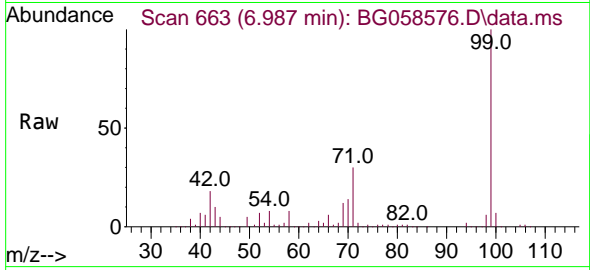


#7
 Phenol-d6
 Concen: 85.444 ng
 RT: 6.987 min Scan# 60
 Delta R.T. 0.004 min
 Lab File: BG058576.D
 Acq: 2 Aug 2023 13:22

Instrument :
 BNA_G
 ClientSampleId :
 SB-22-4-6-20230721MS

Tgt Ion: 99 Resp: 425360

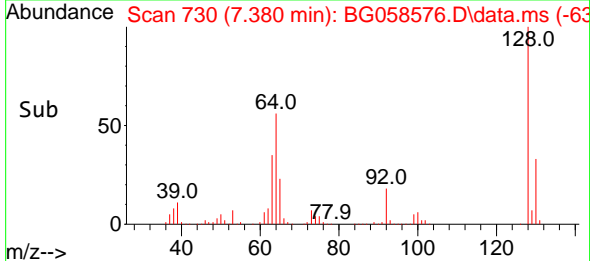
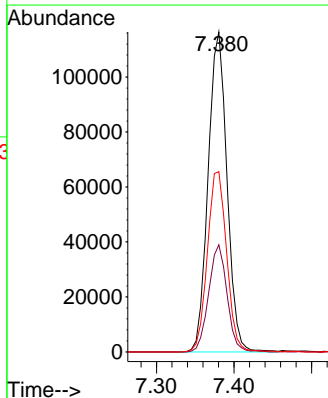
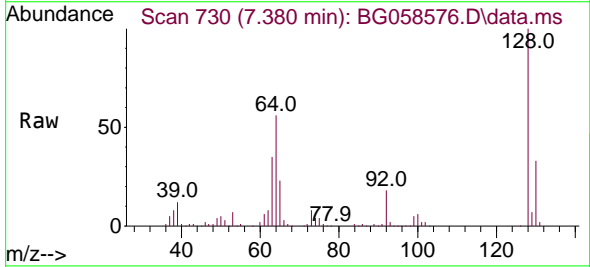
Ion	Ratio	Lower	Upper
99	100		
42	18.4	14.6	21.8
71	30.0	25.0	37.4

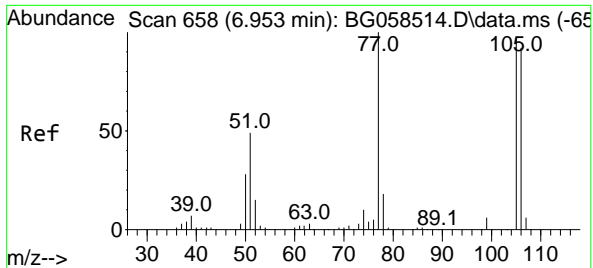


#8
 2-Chlorophenol
 Concen: 56.042 ng
 RT: 7.380 min Scan# 730
 Delta R.T. 0.004 min
 Lab File: BG058576.D
 Acq: 2 Aug 2023 13:22

Tgt Ion: 128 Resp: 196695

Ion	Ratio	Lower	Upper
128	100		
130	33.5	10.9	50.9
64	56.3	39.0	79.0

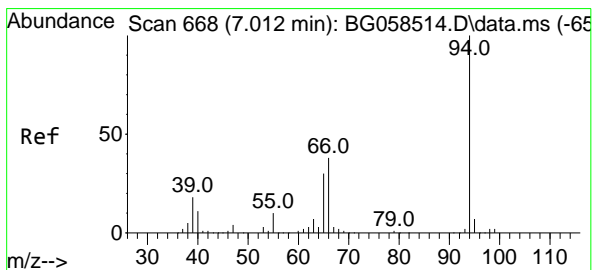
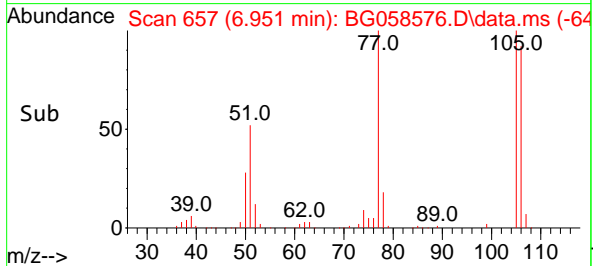
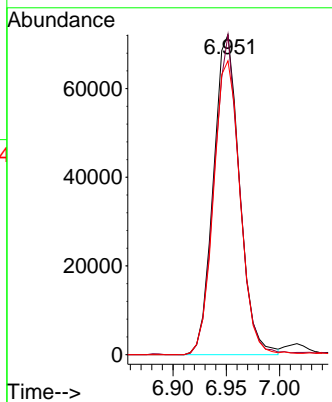
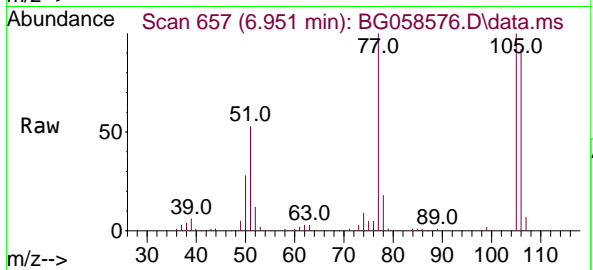




#9
 Benzaldehyde
 Concen: 45.512 ng
 RT: 6.951 min Scan# 657
 Delta R.T. -0.002 min
 Lab File: BG058576.D
 Acq: 2 Aug 2023 13:22

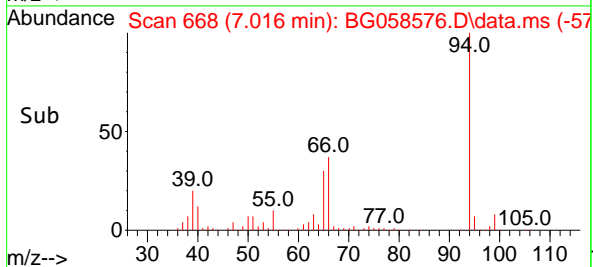
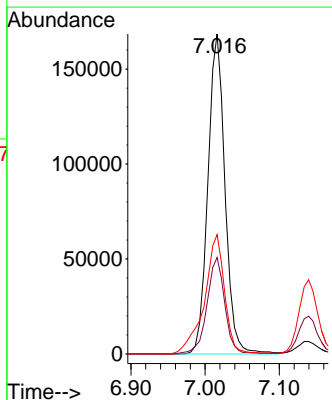
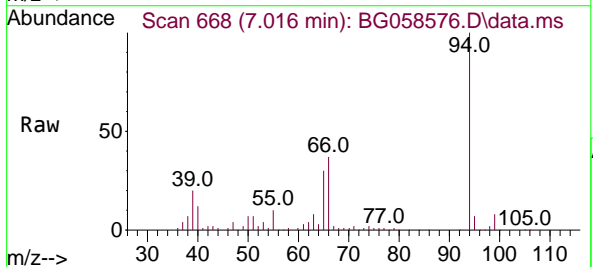
Instrument : BNA_G
 ClientSampleId : SB-22-4-6-20230721MS

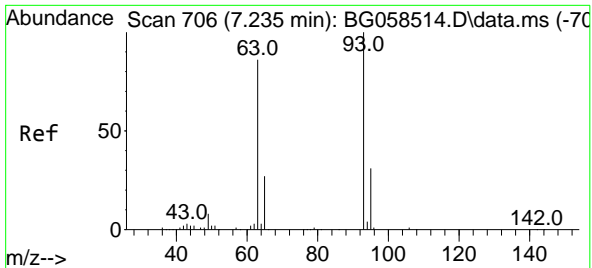
Tgt Ion	Resp	Lower	Upper
77	123097		
105	99.9	77.1	117.1
106	91.8	71.6	111.6



#10
 Phenol
 Concen: 55.392 ng
 RT: 7.016 min Scan# 668
 Delta R.T. 0.004 min
 Lab File: BG058576.D
 Acq: 2 Aug 2023 13:22

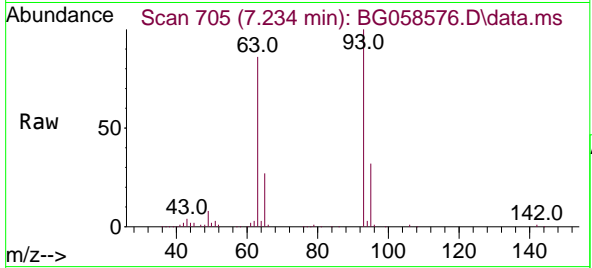
Tgt Ion	Resp	Lower	Upper
94	269370		
65	30.1	10.4	50.4
66	37.3	18.7	58.7





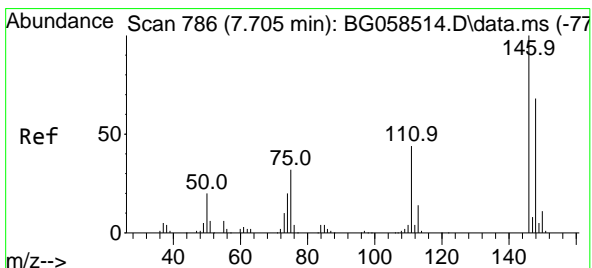
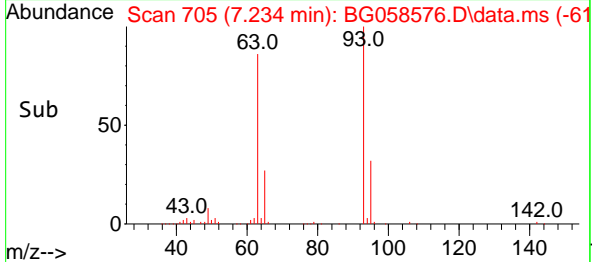
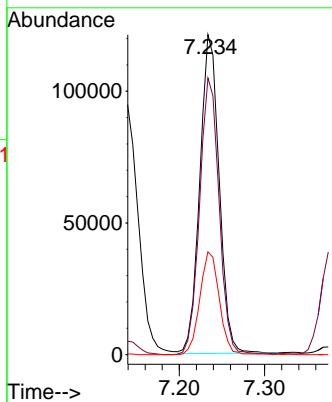
#11
 bis(2-Chloroethyl)ether
 Concen: 49.676 ng
 RT: 7.234 min Scan# 705
 Delta R.T. -0.002 min
 Lab File: BG058576.D
 Acq: 2 Aug 2023 13:22

Instrument : BNA_G
 ClientSampleId : SB-22-4-6-20230721MS



Tgt Ion: 93 Resp: 190449

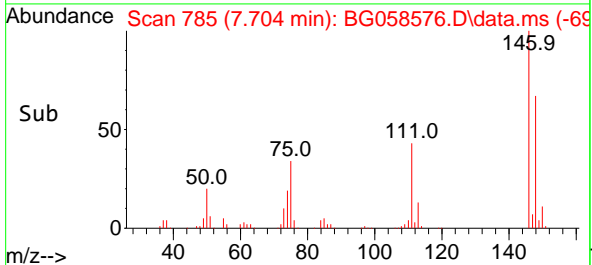
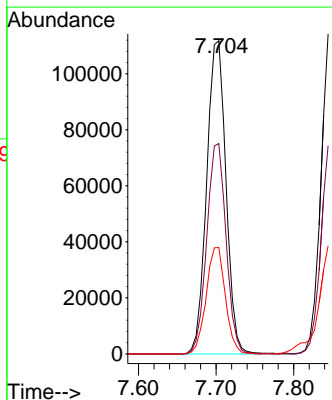
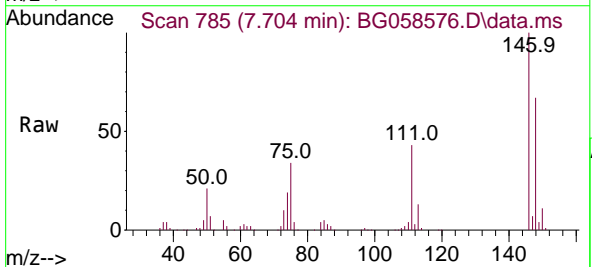
Ion	Ratio	Lower	Upper
93	100		
63	86.4	65.5	105.5
95	32.1	11.2	51.2

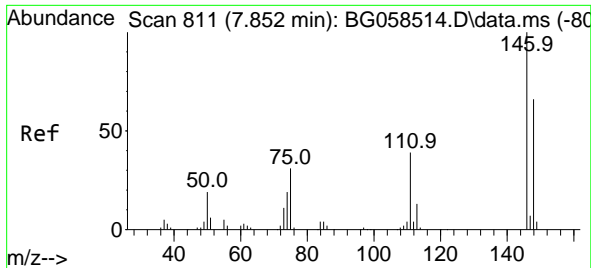


#12
 1,3-Dichlorobenzene
 Concen: 51.587 ng
 RT: 7.704 min Scan# 785
 Delta R.T. -0.002 min
 Lab File: BG058576.D
 Acq: 2 Aug 2023 13:22

Tgt Ion: 146 Resp: 193336

Ion	Ratio	Lower	Upper
146	100		
148	67.1	54.7	82.1
75	33.9	25.8	38.8

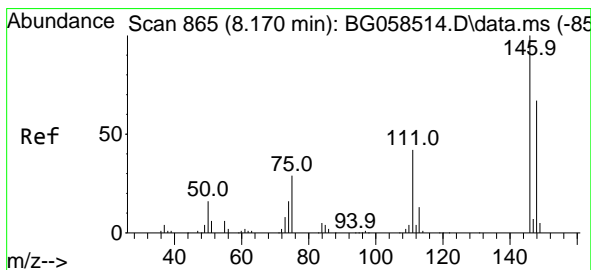
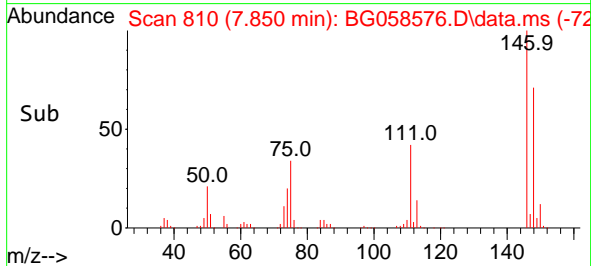
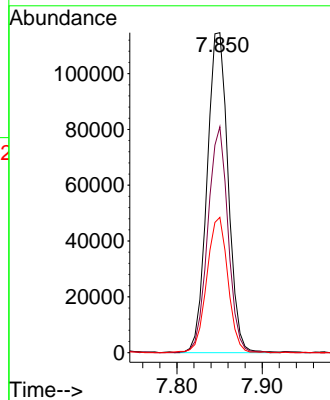
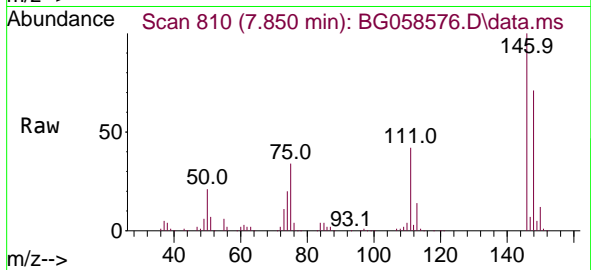




#13
 1,4-Dichlorobenzene
 Concen: 52.193 ng
 RT: 7.850 min Scan# 811
 Delta R.T. -0.002 min
 Lab File: BG058576.D
 Acq: 2 Aug 2023 13:22

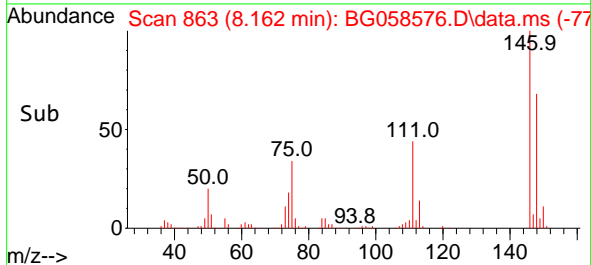
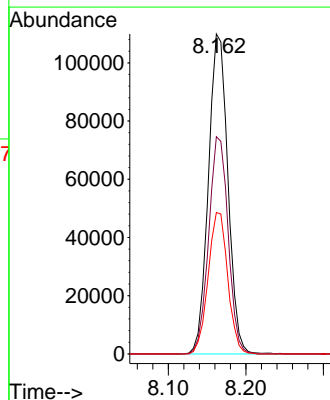
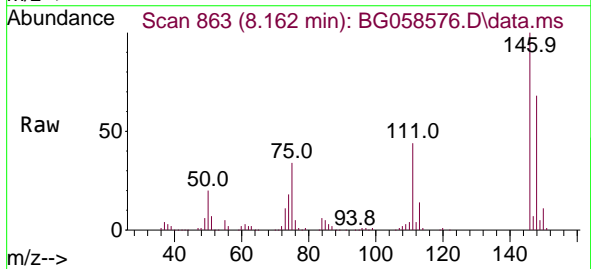
Instrument :
 BNA_G
 ClientSampleId :
 SB-22-4-6-20230721MS

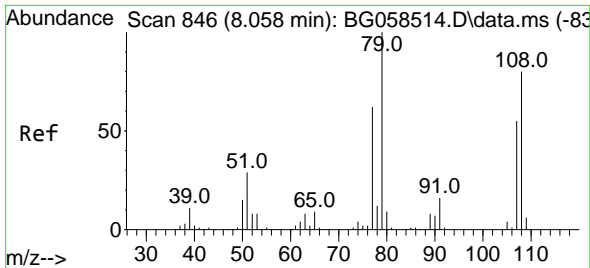
Tgt Ion:146 Resp: 196409
 Ion Ratio Lower Upper
 146 100
 148 70.6 52.8 79.2
 111 42.3 31.7 47.5



#14
 1,2-Dichlorobenzene
 Concen: 53.297 ng
 RT: 8.162 min Scan# 863
 Delta R.T. -0.008 min
 Lab File: BG058576.D
 Acq: 2 Aug 2023 13:22

Tgt Ion:146 Resp: 191752
 Ion Ratio Lower Upper
 146 100
 148 67.9 53.4 80.2
 111 44.2 34.2 51.2

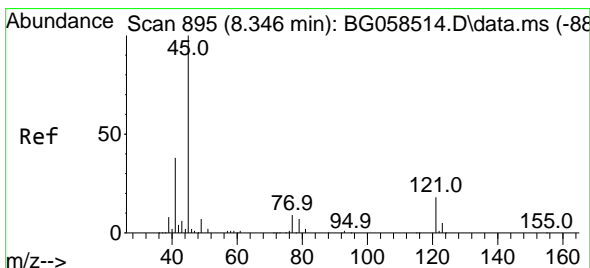
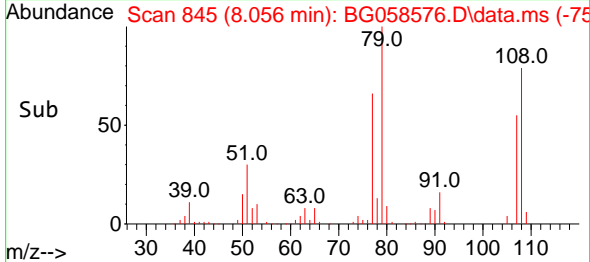
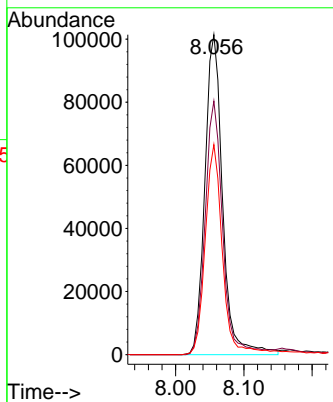
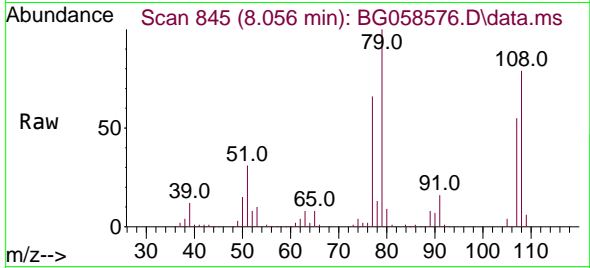




#15
 Benzyl Alcohol
 Concen: 57.837 ng
 RT: 8.056 min Scan# 84
 Delta R.T. -0.002 min
 Lab File: BG058576.D
 Acq: 2 Aug 2023 13:22

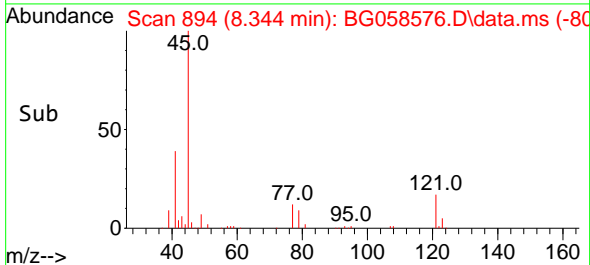
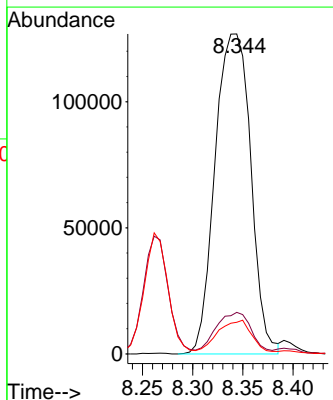
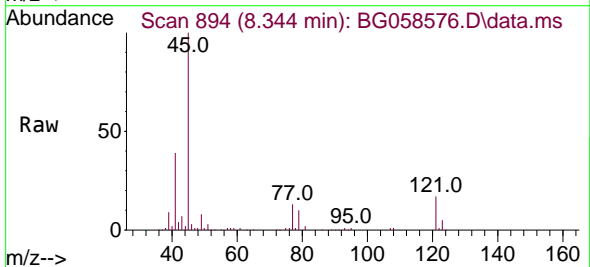
Instrument :
 BNA_G
 ClientSampleId :
 SB-22-4-6-20230721MS

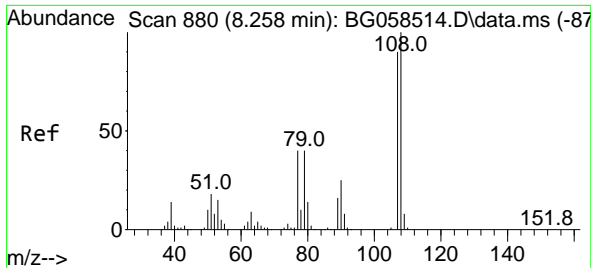
Tgt Ion	Resp	Lower	Upper
79	182596		
108	79.2	63.8	95.6
77	65.6	49.8	74.6



#16
 2,2'-oxybis(1-Chloropropane)
 Concen: 50.393 ng
 RT: 8.344 min Scan# 894
 Delta R.T. -0.002 min
 Lab File: BG058576.D
 Acq: 2 Aug 2023 13:22

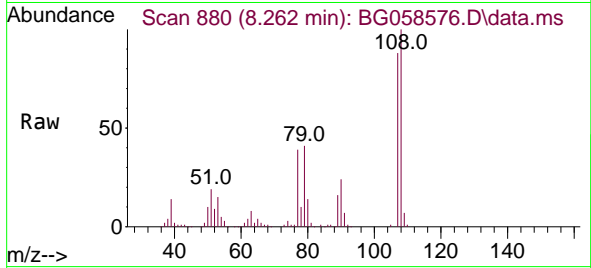
Tgt Ion	Resp	Lower	Upper
45	313826		
77	13.0	0.0	32.6
79	9.9	0.0	30.2





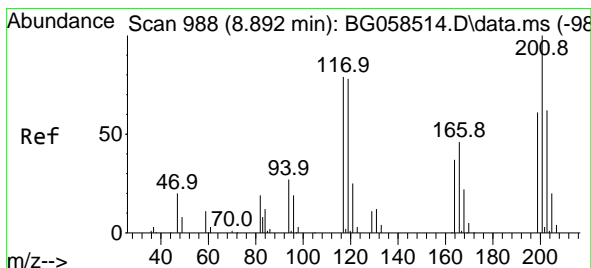
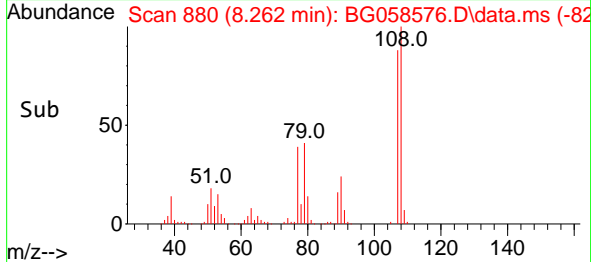
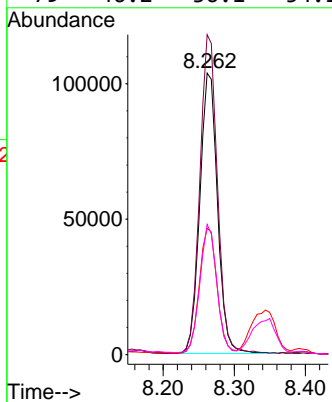
#17
 2-Methylphenol
 Concen: 50.127 ng
 RT: 8.262 min Scan# 881
 Delta R.T. 0.004 min
 Lab File: BG058576.D
 Acq: 2 Aug 2023 13:22

Instrument : BNA_G
 ClientSampleId : SB-22-4-6-20230721MS



Tgt Ion:107 Resp: 178235

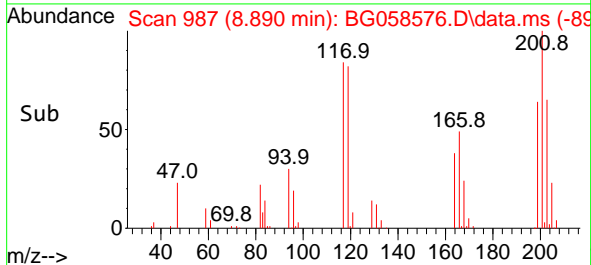
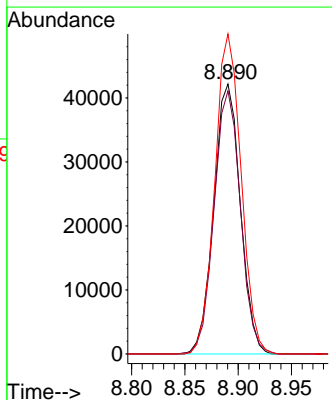
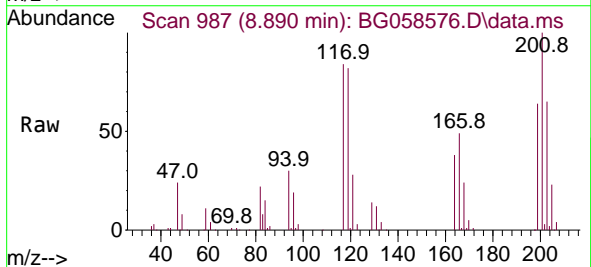
Ion	Ratio	Lower	Upper
107	100		
108	113.6	89.1	133.7
77	44.9	36.2	54.4
79	46.2	36.1	54.1

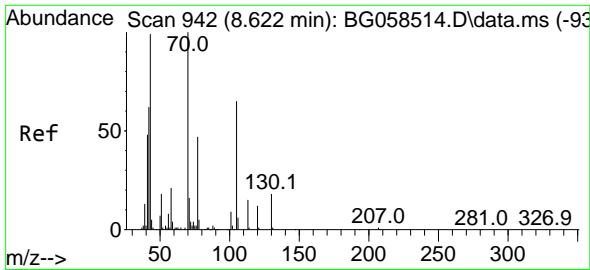


#18
 Hexachloroethane
 Concen: 53.471 ng
 RT: 8.890 min Scan# 987
 Delta R.T. -0.002 min
 Lab File: BG058576.D
 Acq: 2 Aug 2023 13:22

Tgt Ion:117 Resp: 73136

Ion	Ratio	Lower	Upper
117	100		
119	97.4	78.6	117.8
201	118.6	101.4	152.0

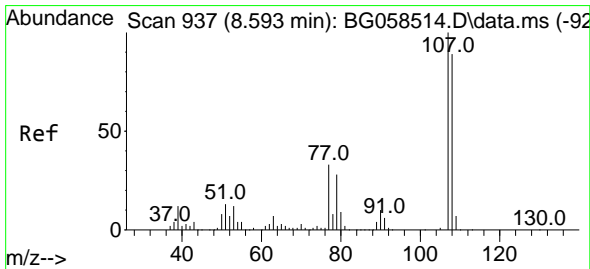
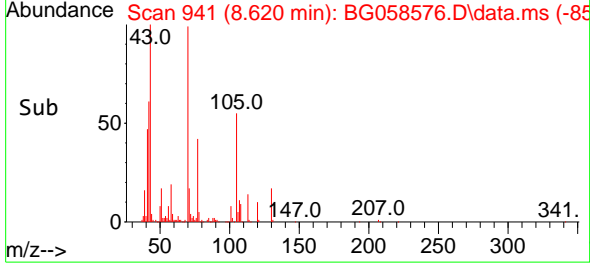
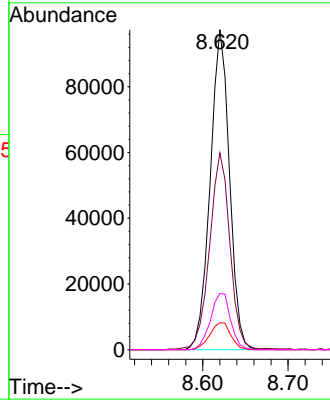
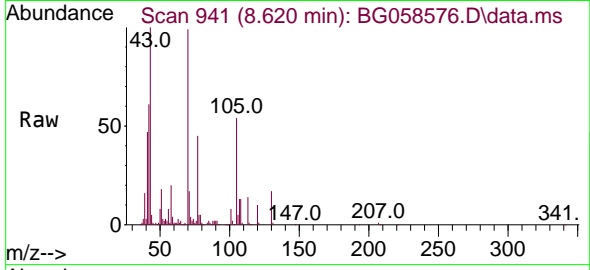




#19
 n-Nitroso-di-n-propylamine
 Concen: 47.513 ng
 RT: 8.620 min Scan# 942
 Delta R.T. -0.002 min
 Lab File: BG058576.D
 Acq: 2 Aug 2023 13:22

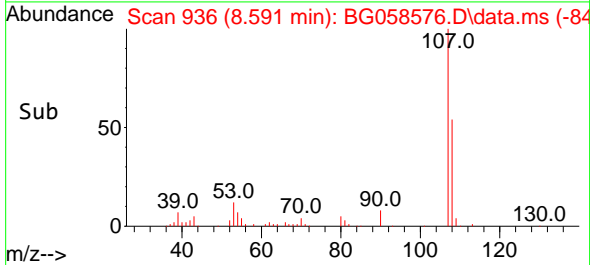
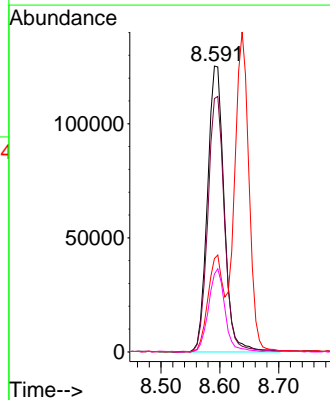
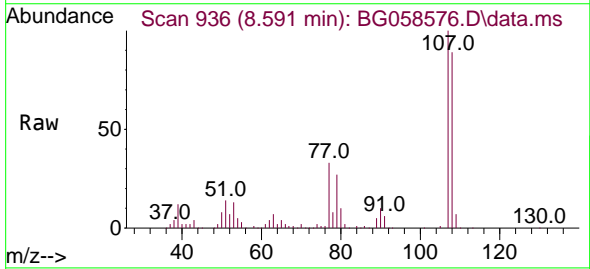
Instrument :
 BNA_G
 ClientSampleId :
 SB-22-4-6-20230721MS

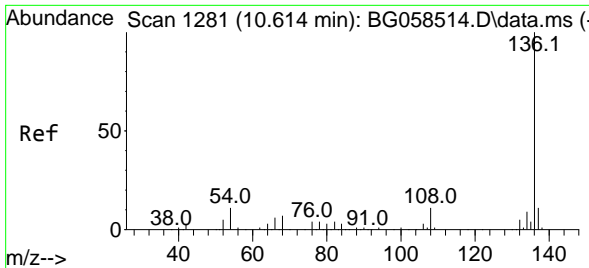
Tgt Ion: 70 Resp: 152782
 Ion Ratio Lower Upper
 70 100
 42 61.5 49.7 74.5
 101 8.4 7.0 10.4
 130 17.6 14.3 21.5



#20
 3+4-Methylphenols
 Concen: 51.461 ng
 RT: 8.591 min Scan# 936
 Delta R.T. -0.002 min
 Lab File: BG058576.D
 Acq: 2 Aug 2023 13:22

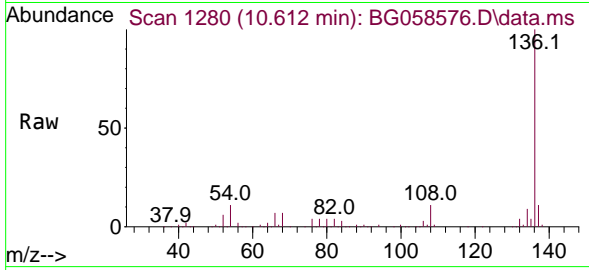
Tgt Ion: 107 Resp: 247506
 Ion Ratio Lower Upper
 107 100
 108 88.7 69.4 109.4
 77 32.7 13.0 53.0
 79 27.2 8.0 48.0





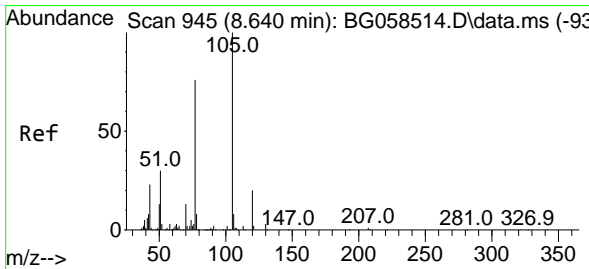
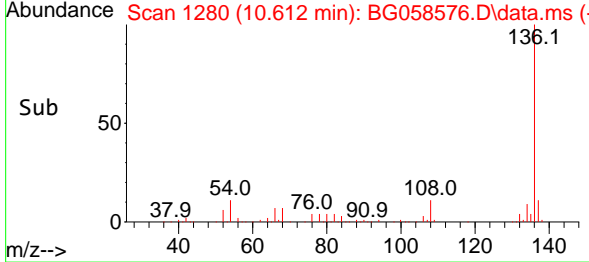
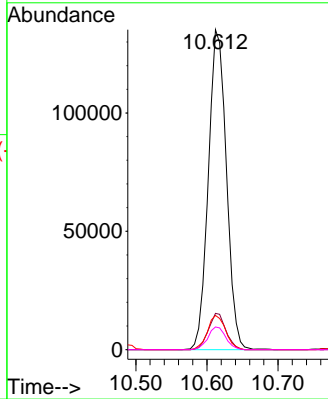
#21
 Naphthalene-d8
 Concen: 20.000 ng
 RT: 10.612 min Scan# 11
 Delta R.T. -0.002 min
 Lab File: BG058576.D
 Acq: 2 Aug 2023 13:22

Instrument :
 BNA_G
 ClientSampleId :
 SB-22-4-6-20230721MS



Tgt Ion:136 Resp: 239185

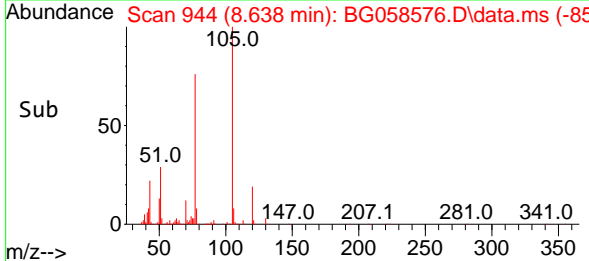
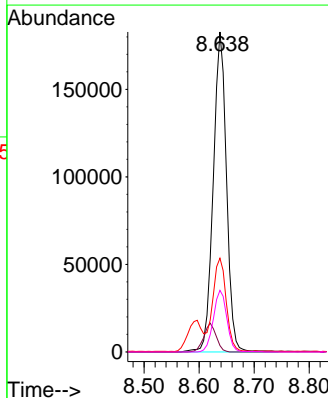
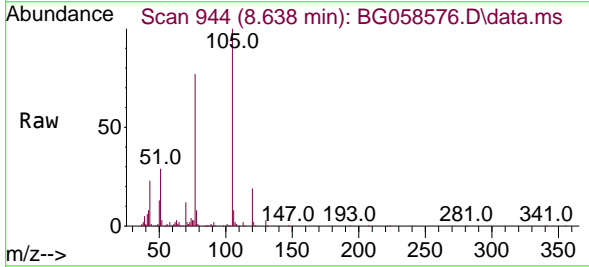
Ion	Ratio	Lower	Upper
136	100		
137	11.3	8.6	13.0
54	10.7	8.9	13.3
68	7.1	5.6	8.4

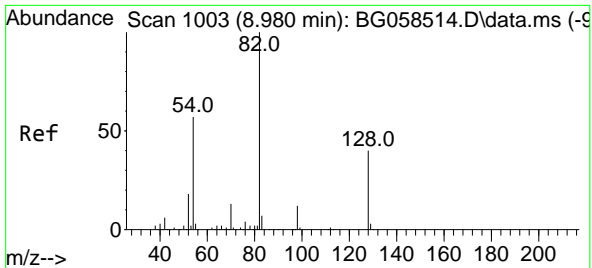


#22
 Acetophenone
 Concen: 47.691 ng
 RT: 8.638 min Scan# 944
 Delta R.T. -0.002 min
 Lab File: BG058576.D
 Acq: 2 Aug 2023 13:22

Tgt Ion:105 Resp: 305434

Ion	Ratio	Lower	Upper
105	100		
71	2.0	1.8	2.6
51	29.3	24.2	36.2
120	19.2	16.2	24.4

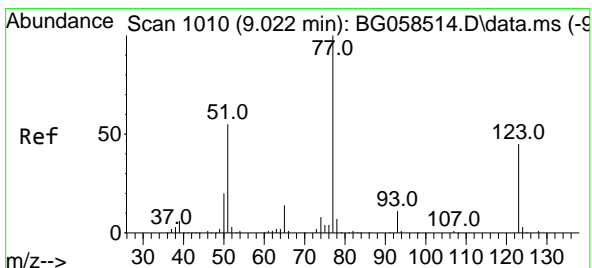
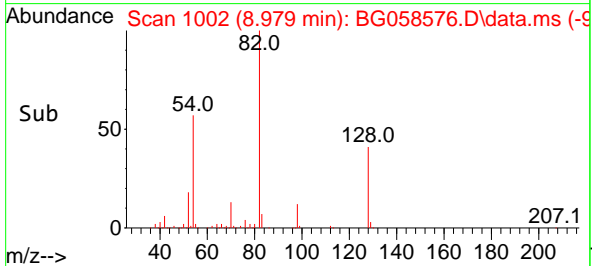
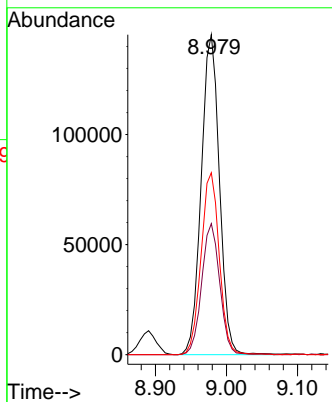
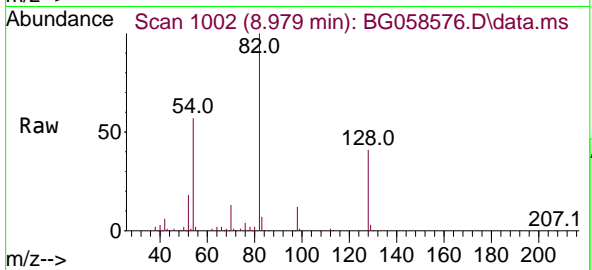




#23
 Nitrobenzene-d5
 Concen: 52.867 ng
 RT: 8.979 min Scan# 1002
 Delta R.T. -0.002 min
 Lab File: BG058576.D
 Acq: 2 Aug 2023 13:22

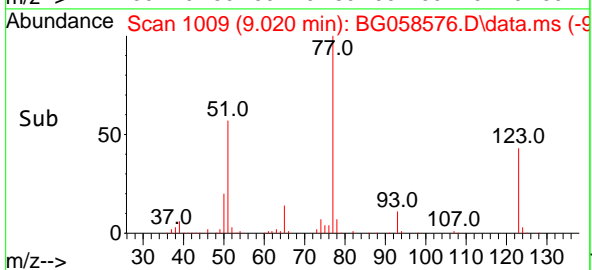
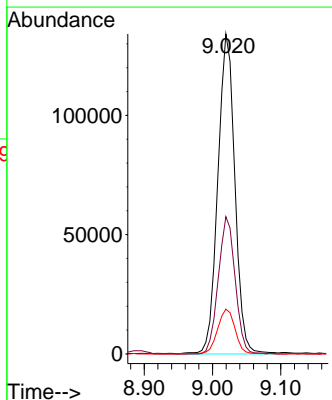
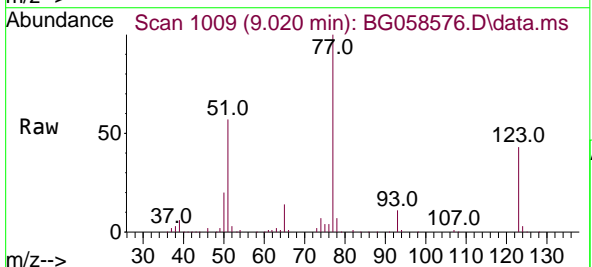
Instrument :
 BNA_G
 ClientSampleId :
 SB-22-4-6-20230721MS

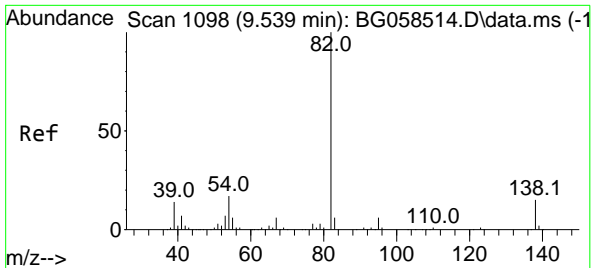
Tgt Ion: 82 Resp: 257404
 Ion Ratio Lower Upper
 82 100
 128 40.9 32.2 48.2
 54 56.8 46.0 69.0



#24
 Nitrobenzene
 Concen: 46.760 ng
 RT: 9.020 min Scan# 1009
 Delta R.T. -0.002 min
 Lab File: BG058576.D
 Acq: 2 Aug 2023 13:22

Tgt Ion: 77 Resp: 231456
 Ion Ratio Lower Upper
 77 100
 123 42.9 35.6 53.4
 65 14.0 11.4 17.0



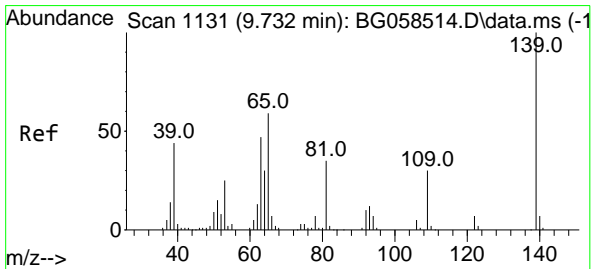
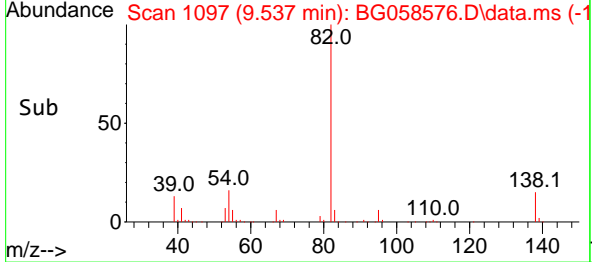
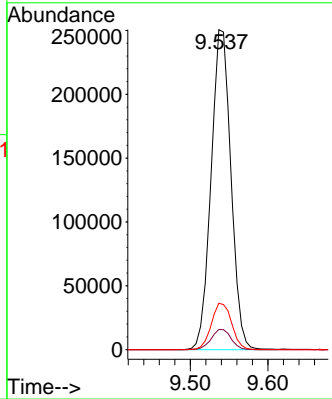
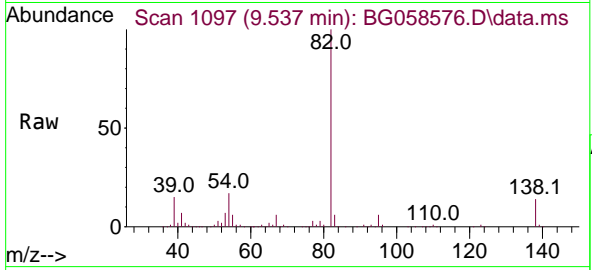


#25
 Isophorone
 Concen: 44.278 ng
 RT: 9.537 min Scan# 1097
 Delta R.T. -0.002 min
 Lab File: BG058576.D
 Acq: 2 Aug 2023 13:22

Instrument : BNA_G
 ClientSampleId : SB-22-4-6-20230721MS

Tgt Ion: 82 Resp: 445435

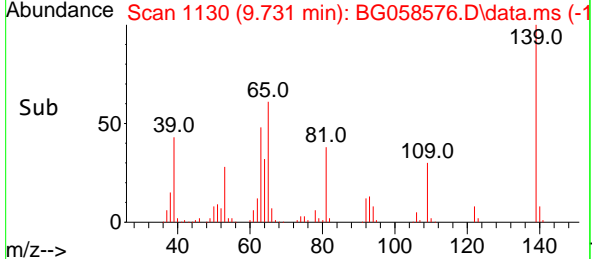
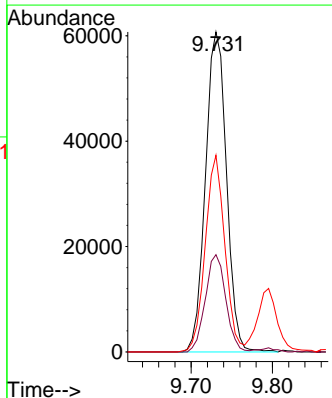
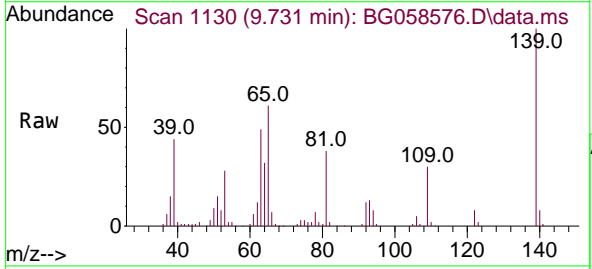
Ion	Ratio	Lower	Upper
82	100		
95	6.3	5.1	7.7
138	14.5	11.9	17.9

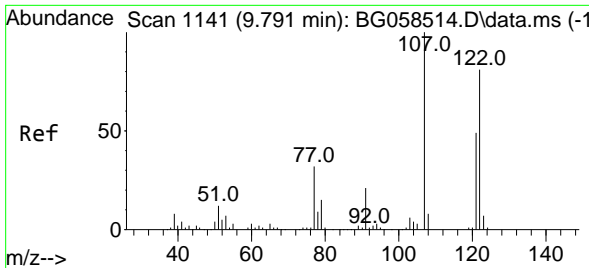


#26
 2-Nitrophenol
 Concen: 50.720 ng
 RT: 9.731 min Scan# 1130
 Delta R.T. -0.002 min
 Lab File: BG058576.D
 Acq: 2 Aug 2023 13:22

Tgt Ion:139 Resp: 109285

Ion	Ratio	Lower	Upper
139	100		
109	30.4	24.2	36.2
65	61.4	47.0	70.4



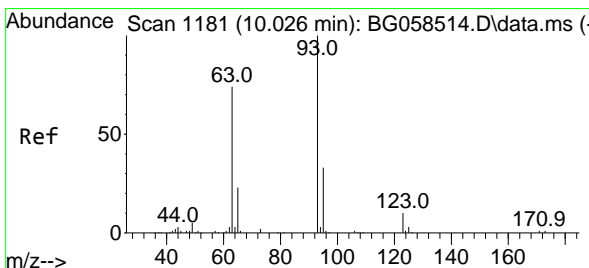
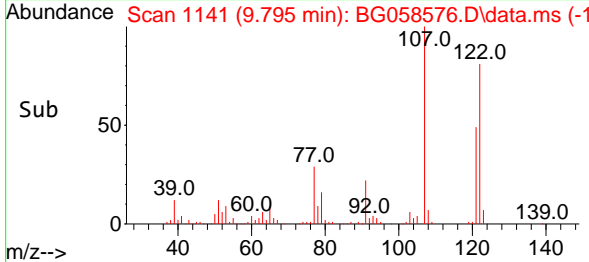
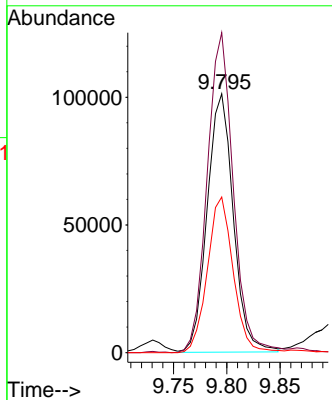
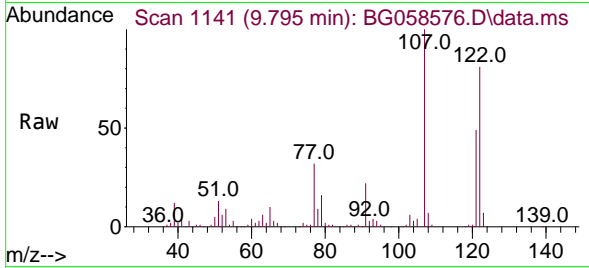


#27
 2,4-Dimethylphenol
 Concen: 48.292 ng
 RT: 9.795 min Scan# 111
 Delta R.T. 0.004 min
 Lab File: BG058576.D
 Acq: 2 Aug 2023 13:22

Instrument : BNA_G
 ClientSampleId : SB-22-4-6-20230721MS

Tgt Ion:122 Resp: 172596

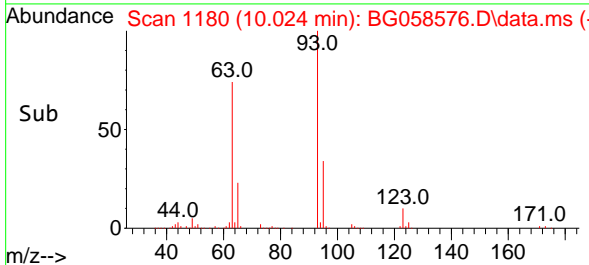
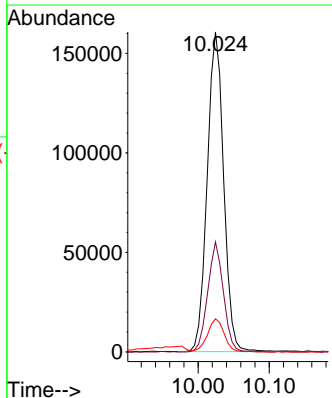
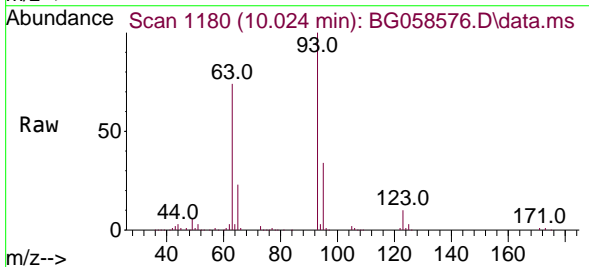
Ion	Ratio	Lower	Upper
122	100		
107	123.7	98.0	147.0
121	60.1	47.8	71.6

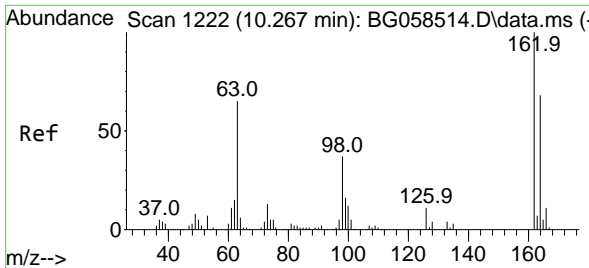


#28
 bis(2-Chloroethoxy)methane
 Concen: 47.119 ng
 RT: 10.024 min Scan# 1180
 Delta R.T. -0.002 min
 Lab File: BG058576.D
 Acq: 2 Aug 2023 13:22

Tgt Ion: 93 Resp: 257962

Ion	Ratio	Lower	Upper
93	100		
95	34.4	26.0	39.0
123	10.3	7.8	11.8



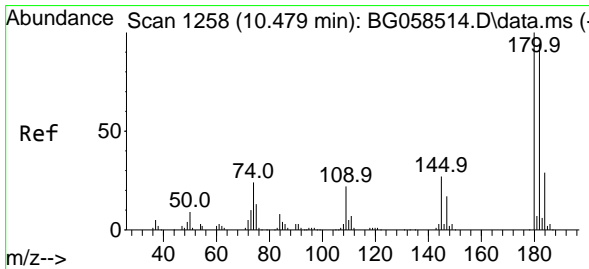
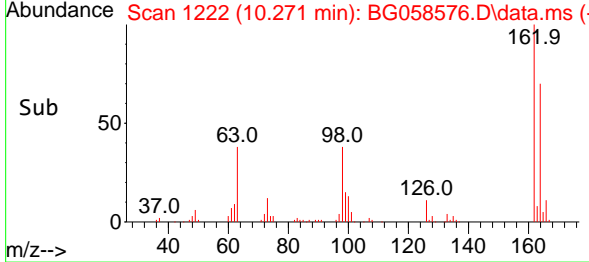
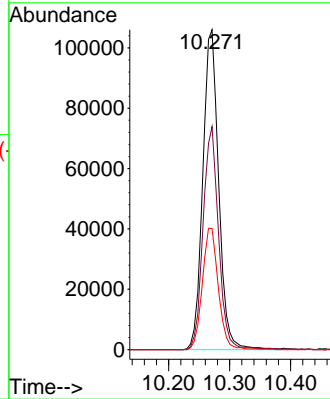
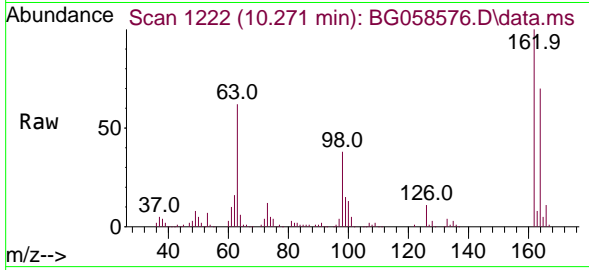


#29
 2,4-Dichlorophenol
 Concen: 51.816 ng
 RT: 10.271 min Scan# 11
 Delta R.T. 0.004 min
 Lab File: BG058576.D
 Acq: 2 Aug 2023 13:22

Instrument :
 BNA_G
 ClientSampleId :
 SB-22-4-6-20230721MS

Tgt Ion:162 Resp: 192281

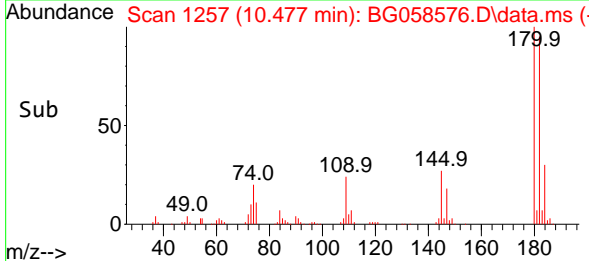
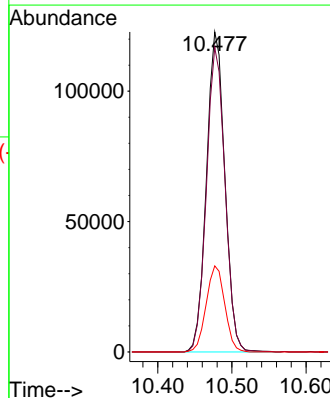
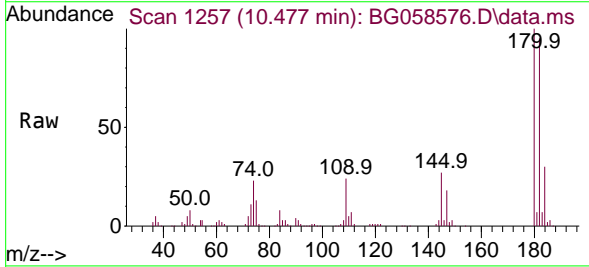
Ion	Ratio	Lower	Upper
162	100		
164	69.7	47.6	87.6
98	37.9	17.1	57.1

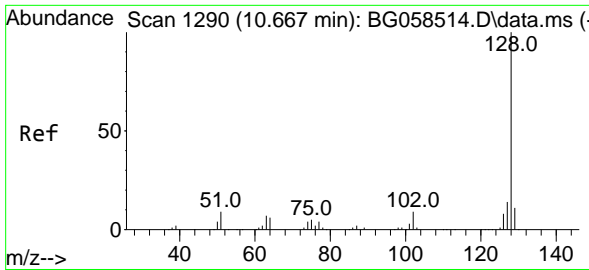


#30
 1,2,4-Trichlorobenzene
 Concen: 49.358 ng
 RT: 10.477 min Scan# 1257
 Delta R.T. -0.002 min
 Lab File: BG058576.D
 Acq: 2 Aug 2023 13:22

Tgt Ion:180 Resp: 211228

Ion	Ratio	Lower	Upper
180	100		
182	95.1	75.0	112.4
145	26.9	21.9	32.9



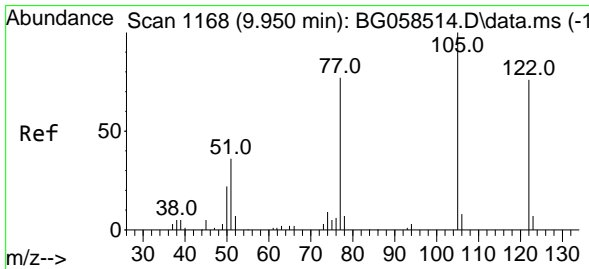
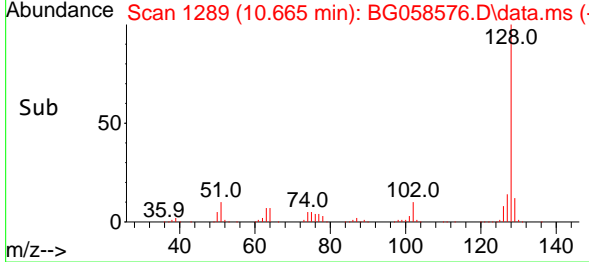
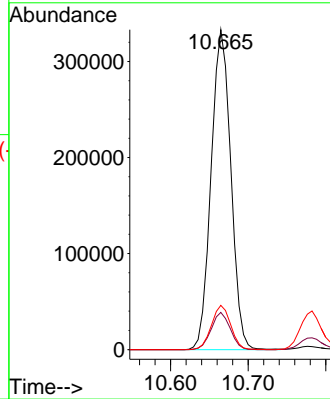
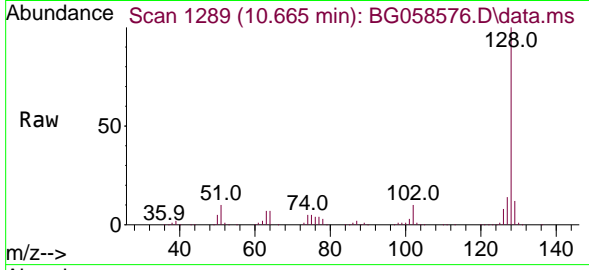


#31
 Naphthalene
 Concen: 46.633 ng
 RT: 10.665 min Scan# 1171
 Delta R.T. -0.002 min
 Lab File: BG058576.D
 Acq: 2 Aug 2023 13:22

Instrument : BNA_G
 ClientSampleId : SB-22-4-6-20230721MS

Tgt Ion:128 Resp: 587881

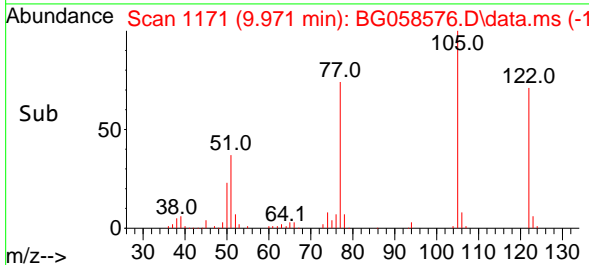
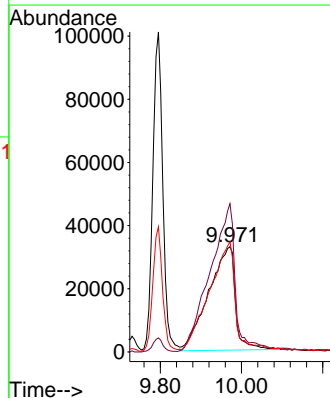
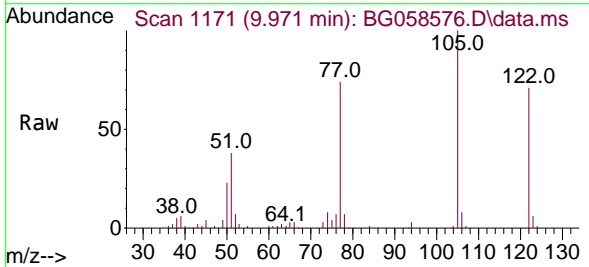
Ion	Ratio	Lower	Upper
128	100		
129	11.6	8.8	13.2
127	13.8	10.9	16.3

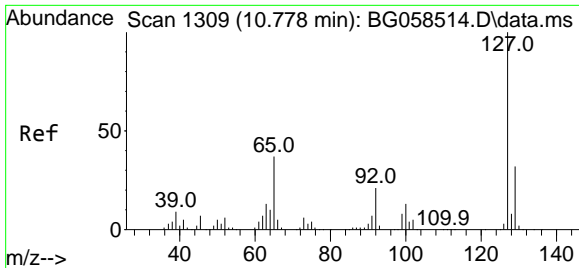


#32
 Benzoic acid
 Concen: 54.341 ng
 RT: 9.971 min Scan# 1171
 Delta R.T. 0.021 min
 Lab File: BG058576.D
 Acq: 2 Aug 2023 13:22

Tgt Ion:122 Resp: 150083

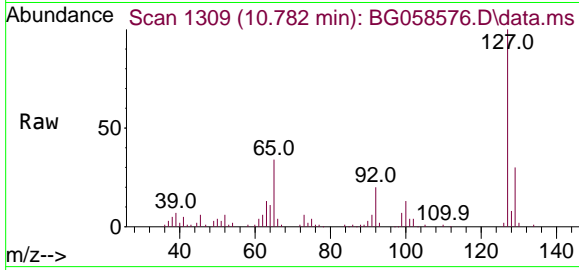
Ion	Ratio	Lower	Upper
122	100		
105	140.8	106.5	146.5
77	104.7	78.1	118.1





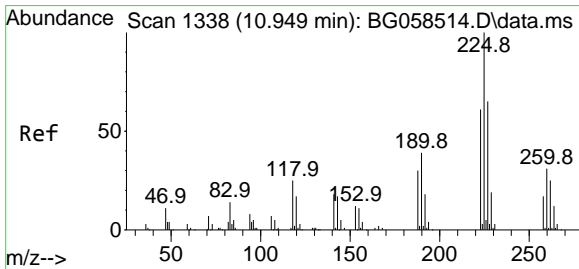
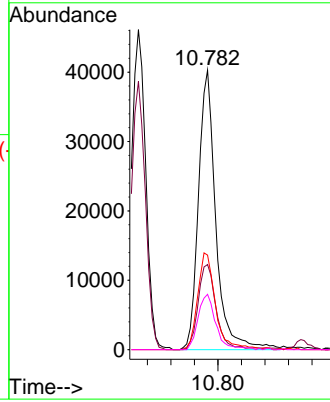
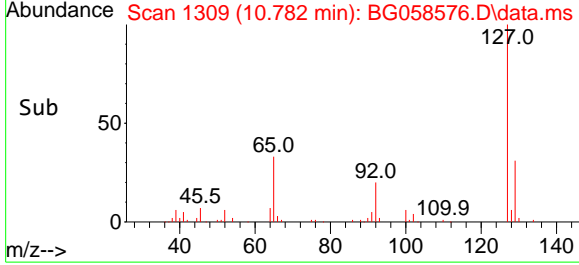
#33
 4-Chloroaniline
 Concen: 15.528 ng
 RT: 10.782 min Scan# 1337
 Delta R.T. 0.004 min
 Lab File: BG058576.D
 Acq: 2 Aug 2023 13:22

Instrument : BNA_G
 ClientSampleId : SB-22-4-6-20230721MS

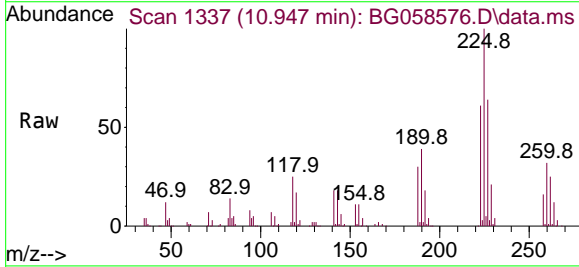


Tgt Ion:127 Resp: 82705

Ion	Ratio	Lower	Upper
127	100		
129	30.4	25.4	38.2
65	33.8	29.5	44.3
92	19.8	16.6	24.8

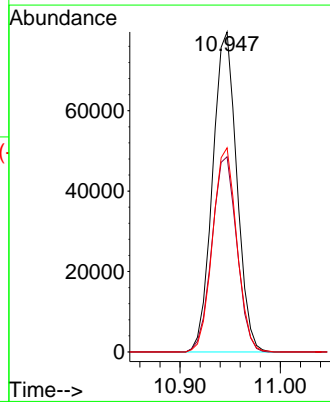
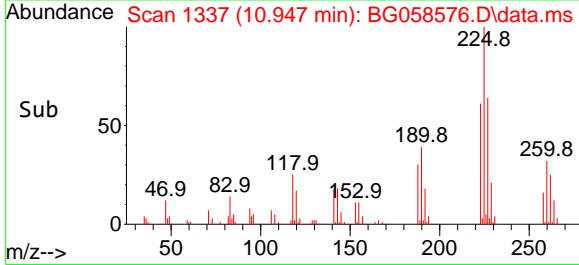


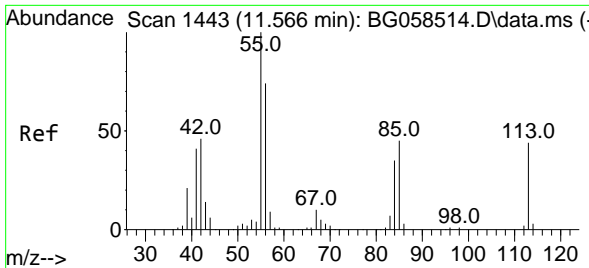
#34
 Hexachlorobutadiene
 Concen: 48.377 ng
 RT: 10.947 min Scan# 1337
 Delta R.T. -0.002 min
 Lab File: BG058576.D
 Acq: 2 Aug 2023 13:22



Tgt Ion:225 Resp: 133328

Ion	Ratio	Lower	Upper
225	100		
223	61.0	49.0	73.6
227	63.8	51.7	77.5

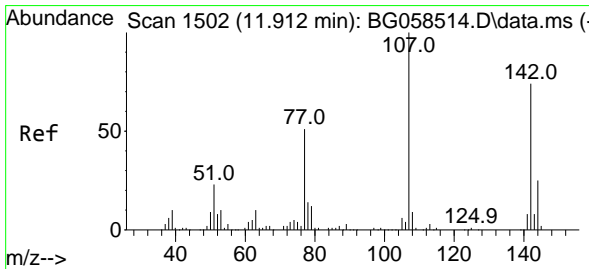
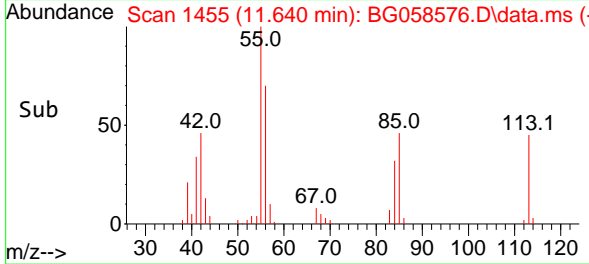
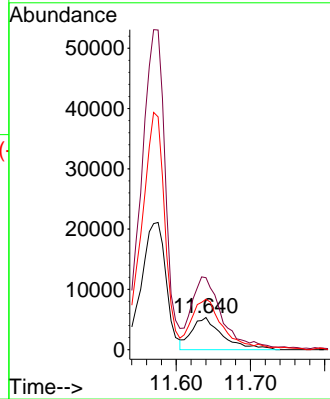
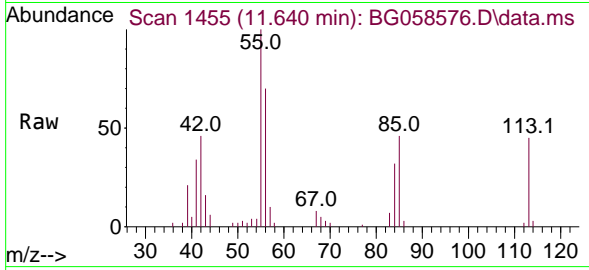




#35
 Caprolactam
 Concen: 11.177 ng
 RT: 11.640 min Scan# 14
 Delta R.T. 0.074 min
 Lab File: BG058576.D
 Acq: 2 Aug 2023 13:22

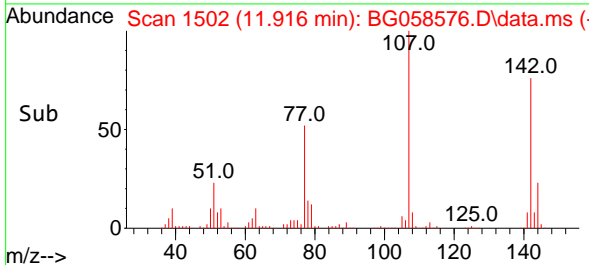
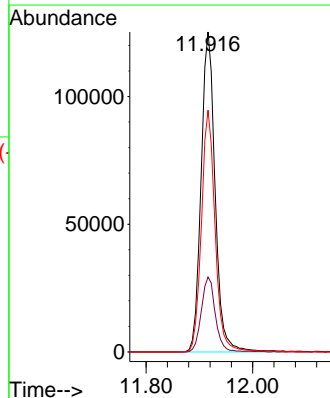
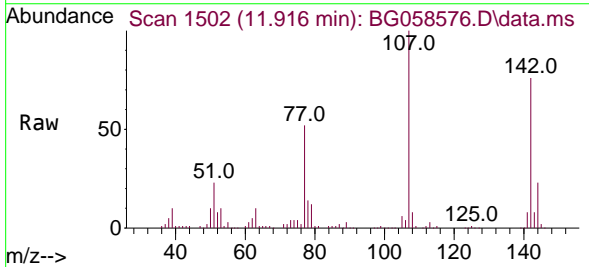
Instrument :
 BNA_G
 ClientSampleId :
 SB-22-4-6-20230721MS

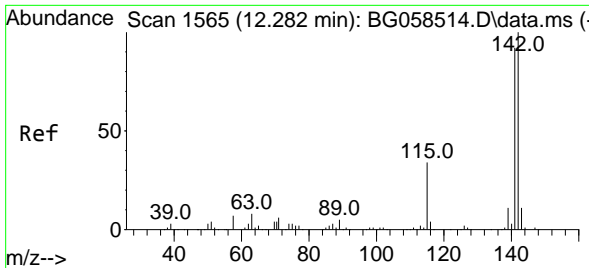
Tgt Ion:113 Resp: 15316
 Ion Ratio Lower Upper
 113 100
 55 224.3 208.0 248.0
 56 156.6 148.6 188.6



#36
 4-Chloro-3-methylphenol
 Concen: 49.731 ng
 RT: 11.916 min Scan# 1502
 Delta R.T. 0.004 min
 Lab File: BG058576.D
 Acq: 2 Aug 2023 13:22

Tgt Ion:107 Resp: 228286
 Ion Ratio Lower Upper
 107 100
 144 23.4 19.6 29.4
 142 75.5 59.3 88.9



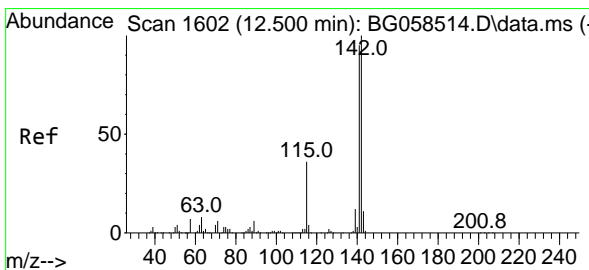
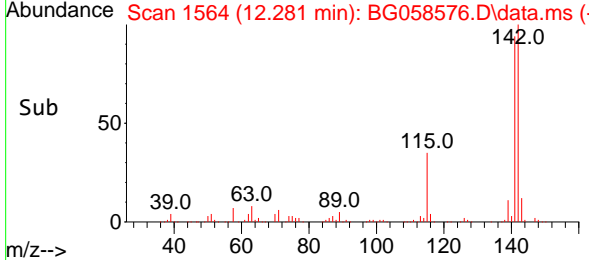
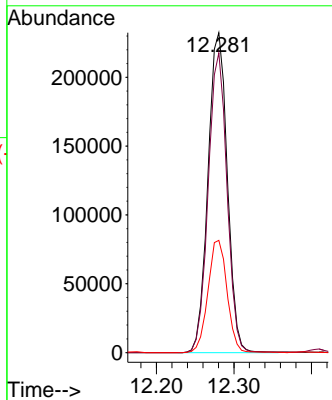
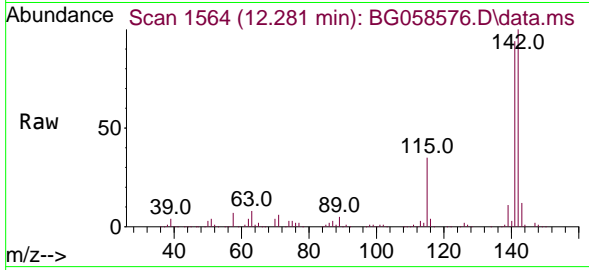


#37
 2-Methylnaphthalene
 Concen: 44.576 ng
 RT: 12.281 min Scan# 111
 Delta R.T. -0.002 min
 Lab File: BG058576.D
 Acq: 2 Aug 2023 13:22

Instrument :
 BNA_G
 ClientSampleId :
 SB-22-4-6-20230721MS

Tgt Ion:142 Resp: 401968

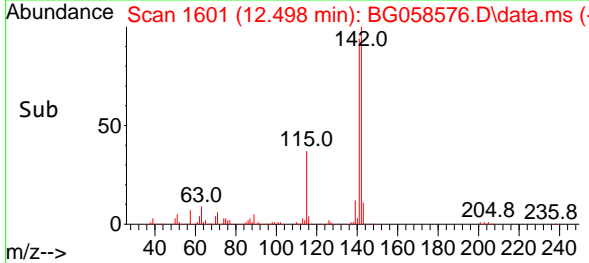
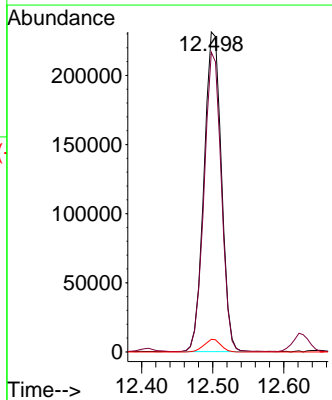
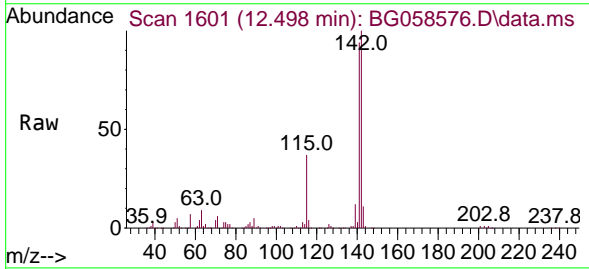
Ion	Ratio	Lower	Upper
142	100		
141	93.7	73.5	110.3
115	35.1	27.4	41.0

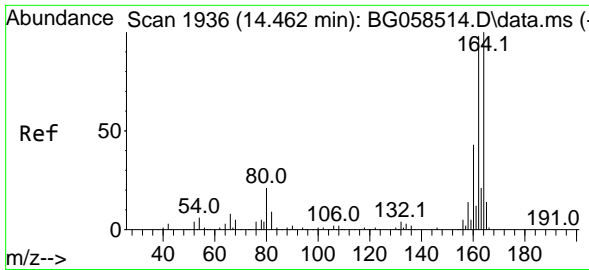


#38
 1-Methylnaphthalene
 Concen: 45.646 ng
 RT: 12.498 min Scan# 1601
 Delta R.T. -0.002 min
 Lab File: BG058576.D
 Acq: 2 Aug 2023 13:22

Tgt Ion:142 Resp: 391271

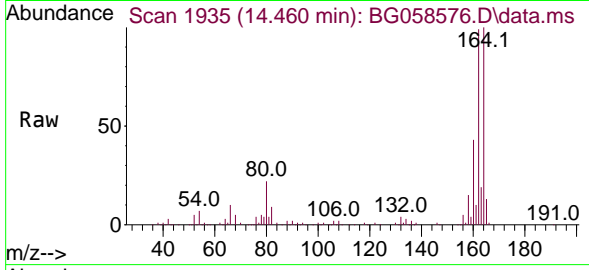
Ion	Ratio	Lower	Upper
142	100		
141	93.6	75.7	113.5
116	3.9	3.2	4.8





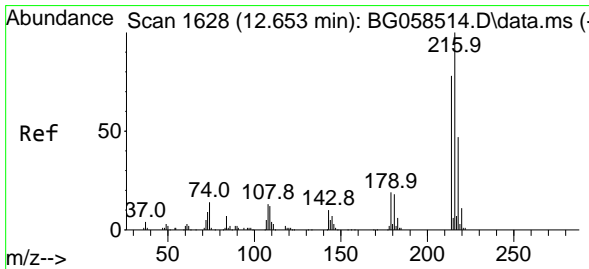
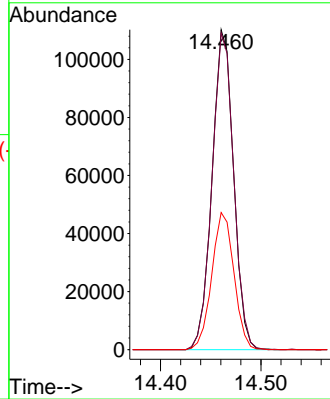
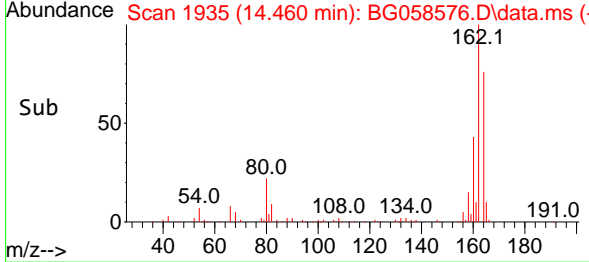
#39
 Acenaphthene-d10
 Concen: 20.000 ng
 RT: 14.460 min Scan# 1935
 Delta R.T. -0.002 min
 Lab File: BG058576.D
 Acq: 2 Aug 2023 13:22

Instrument : BNA_G
 ClientSampleId : SB-22-4-6-20230721MS

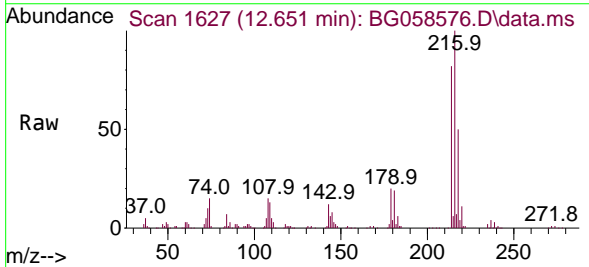


Tgt Ion:164 Resp: 163891

Ion	Ratio	Lower	Upper
164	100		
162	98.9	78.3	117.5
160	42.8	34.1	51.1

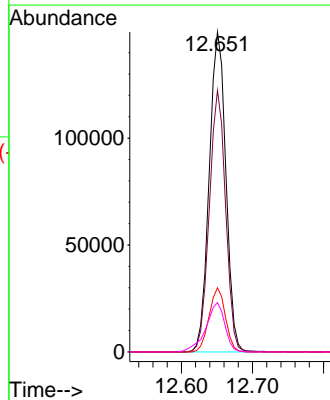
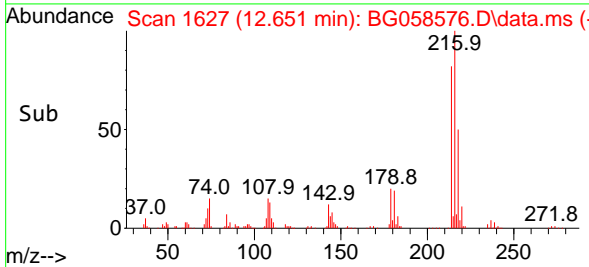


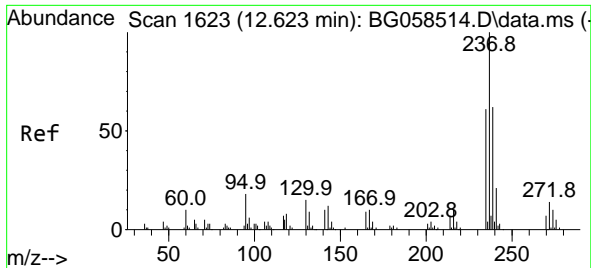
#40
 1,2,4,5-Tetrachlorobenzene
 Concen: 48.258 ng
 RT: 12.651 min Scan# 1627
 Delta R.T. -0.002 min
 Lab File: BG058576.D
 Acq: 2 Aug 2023 13:22



Tgt Ion:216 Resp: 242816

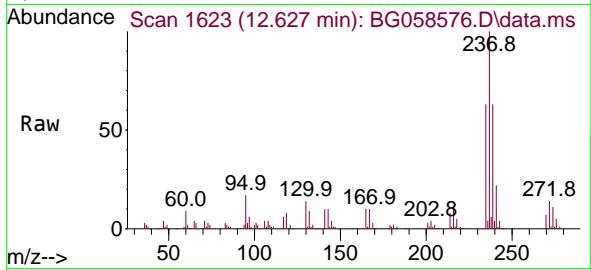
Ion	Ratio	Lower	Upper
216	100		
214	79.9	63.1	94.7
179	19.6	15.6	23.4
108	17.5	12.7	19.1



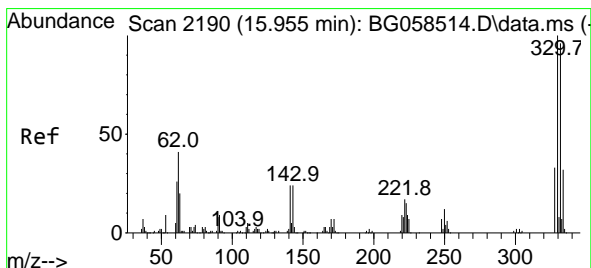
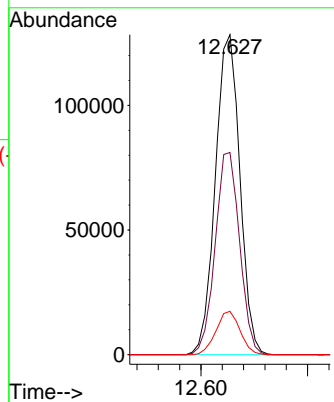
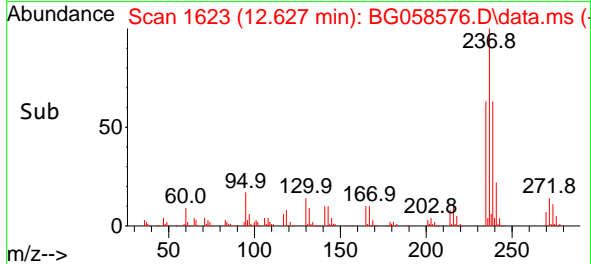


#41
 Hexachlorocyclopentadiene
 Concen: 87.200 ng
 RT: 12.627 min Scan# 1623
 Delta R.T. 0.004 min
 Lab File: BG058576.D
 Acq: 2 Aug 2023 13:22

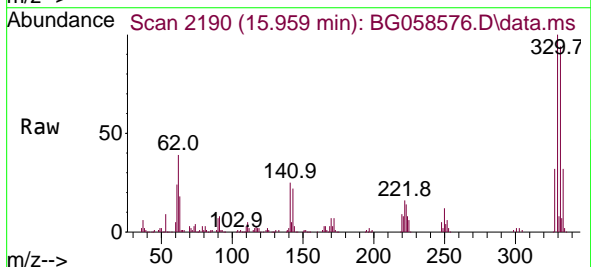
Instrument : BNA_G
 ClientSampleId : SB-22-4-6-20230721MS



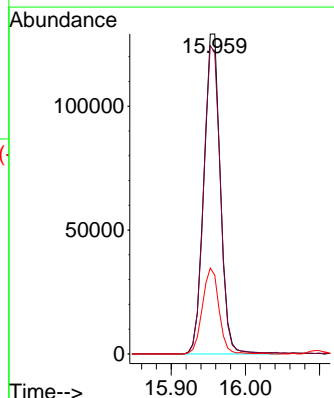
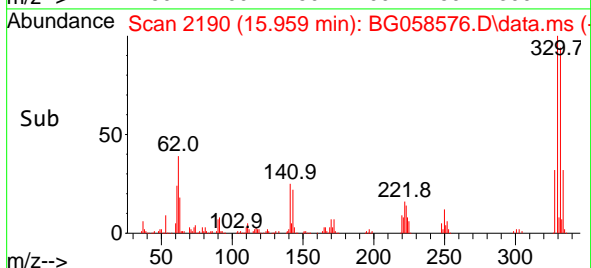
Tgt Ion:237 Resp: 205355
 Ion Ratio Lower Upper
 237 100
 235 63.2 41.0 81.0
 272 13.5 0.0 33.6

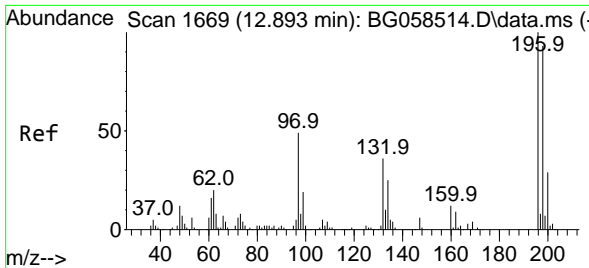


#42
 2,4,6-Tribromophenol
 Concen: 74.110 ng
 RT: 15.959 min Scan# 2190
 Delta R.T. 0.004 min
 Lab File: BG058576.D
 Acq: 2 Aug 2023 13:22



Tgt Ion:330 Resp: 199082
 Ion Ratio Lower Upper
 330 100
 332 97.4 77.5 116.3
 141 26.9 20.7 31.1

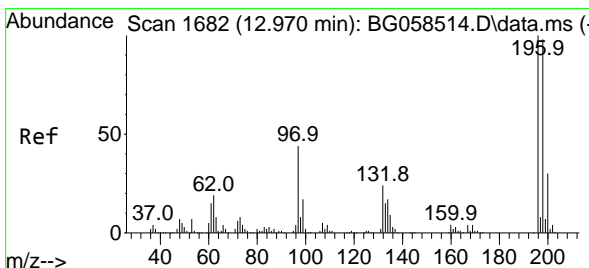
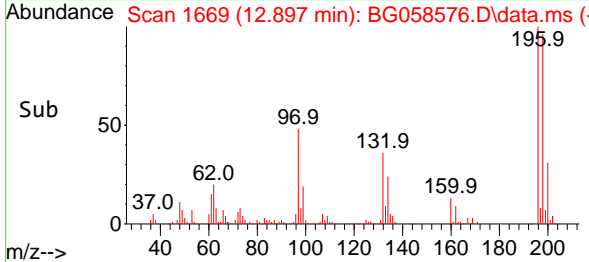
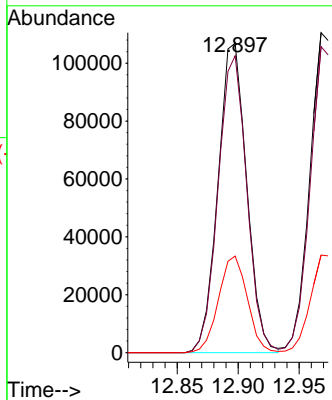
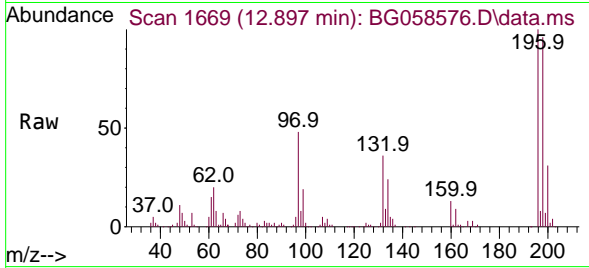




#43
 2,4,6-Trichlorophenol
 Concen: 50.607 ng
 RT: 12.897 min Scan# 1669
 Delta R.T. 0.004 min
 Lab File: BG058576.D
 Acq: 2 Aug 2023 13:22

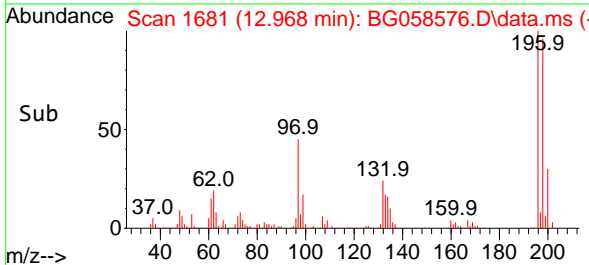
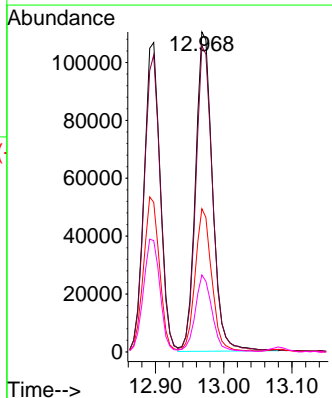
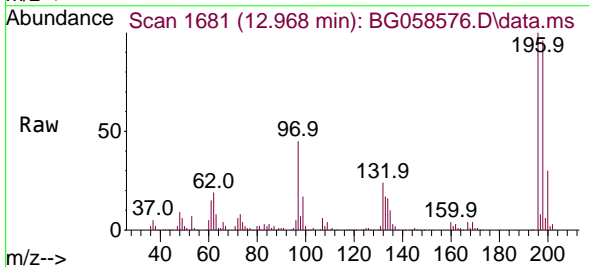
Instrument :
 BNA_G
 ClientSampleId :
 SB-22-4-6-20230721MS

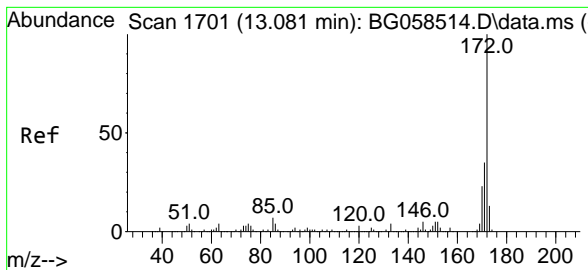
Tgt Ion:196 Resp: 175141
 Ion Ratio Lower Upper
 196 100
 198 95.9 74.2 111.4
 200 31.2 22.9 34.3



#44
 2,4,5-Trichlorophenol
 Concen: 46.898 ng
 RT: 12.968 min Scan# 1681
 Delta R.T. -0.002 min
 Lab File: BG058576.D
 Acq: 2 Aug 2023 13:22

Tgt Ion:196 Resp: 191170
 Ion Ratio Lower Upper
 196 100
 198 95.6 78.3 117.5
 97 44.7 35.2 52.8
 132 24.0 19.4 29.0



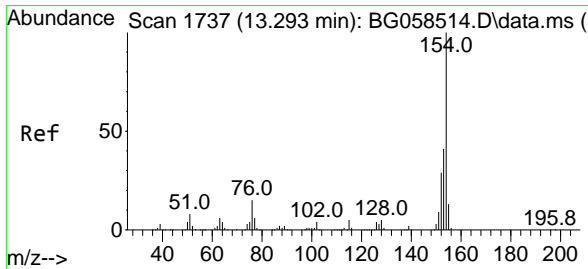
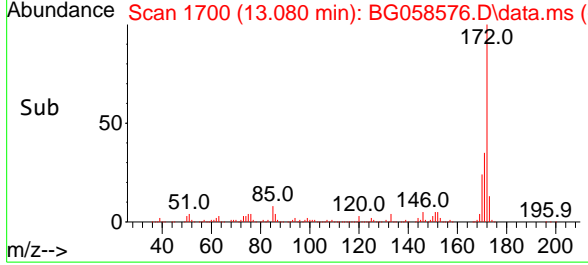
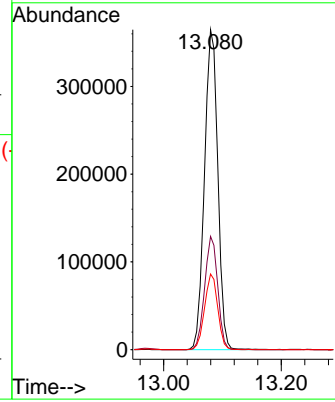
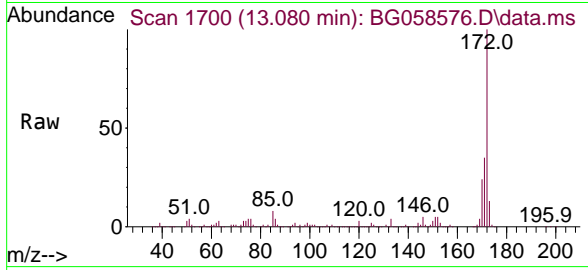


#45
 2-Fluorobiphenyl
 Concen: 52.368 ng
 RT: 13.080 min Scan# 1700
 Delta R.T. -0.002 min
 Lab File: BG058576.D
 Acq: 2 Aug 2023 13:22

Instrument : BNA_G
 ClientSampleId : SB-22-4-6-20230721MS

Tgt Ion:172 Resp: 572717

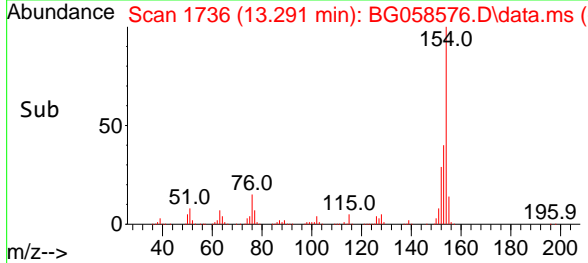
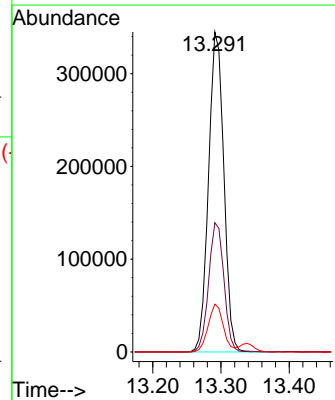
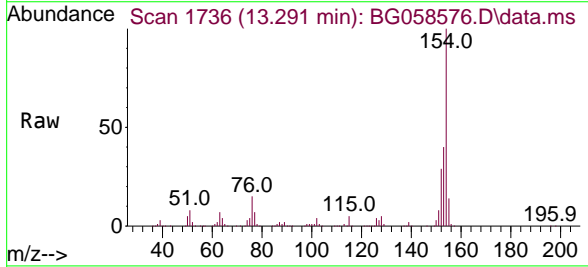
Ion	Ratio	Lower	Upper
172	100		
171	35.4	28.0	42.0
170	23.6	18.4	27.6

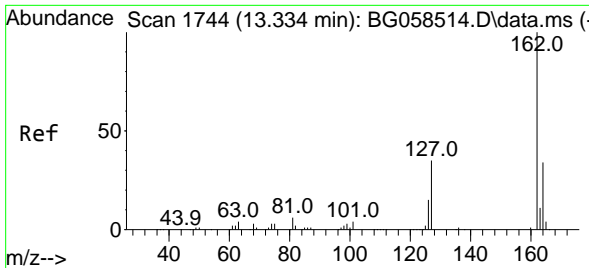


#46
 1,1'-Biphenyl
 Concen: 47.759 ng
 RT: 13.291 min Scan# 1736
 Delta R.T. -0.002 min
 Lab File: BG058576.D
 Acq: 2 Aug 2023 13:22

Tgt Ion:154 Resp: 537536

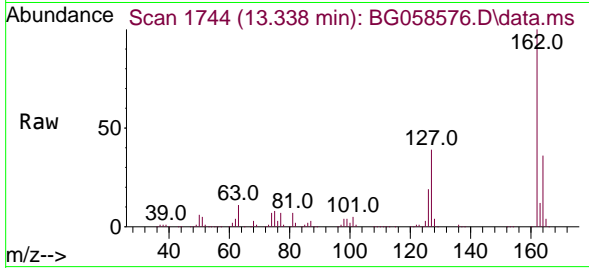
Ion	Ratio	Lower	Upper
154	100		
153	40.4	21.2	61.2
76	15.0	0.0	34.7



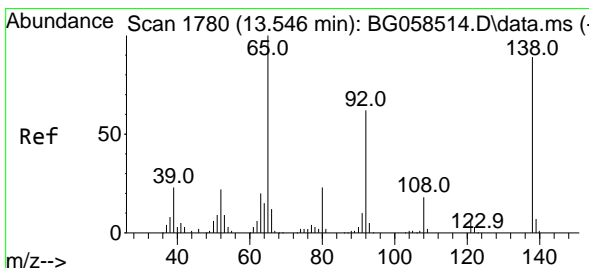
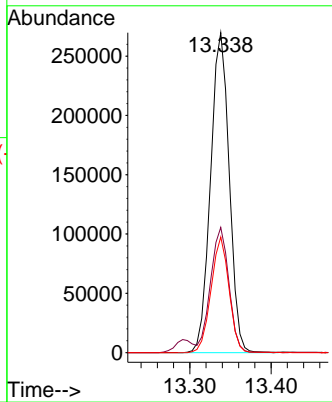
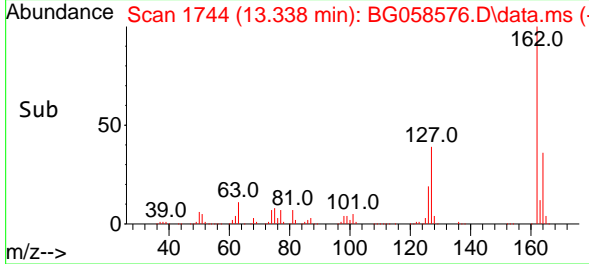


#47
 2-Chloronaphthalene
 Concen: 49.110 ng
 RT: 13.338 min Scan# 1744
 Delta R.T. 0.004 min
 Lab File: BG058576.D
 Acq: 2 Aug 2023 13:22

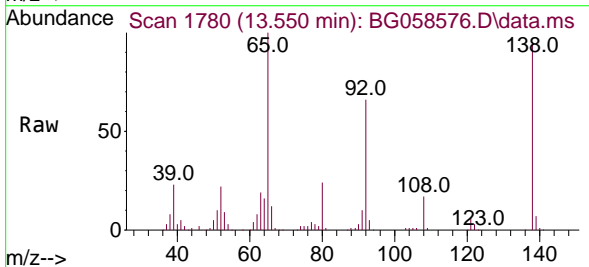
Instrument : BNA_G
 ClientSampleId : SB-22-4-6-20230721MS



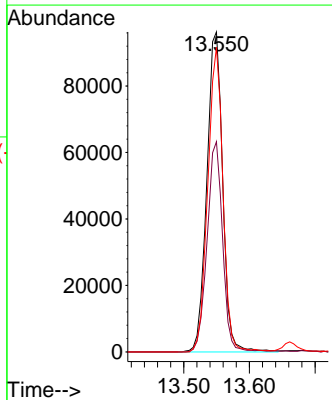
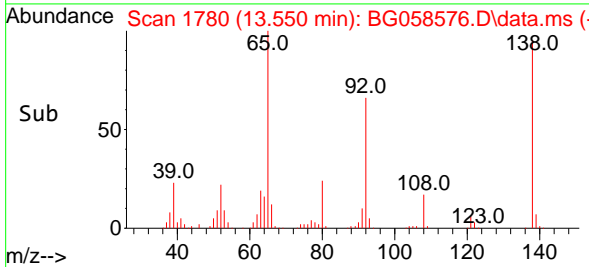
Tgt Ion:162 Resp: 430978
 Ion Ratio Lower Upper
 162 100
 127 39.1 30.9 46.3
 164 36.1 27.2 40.8

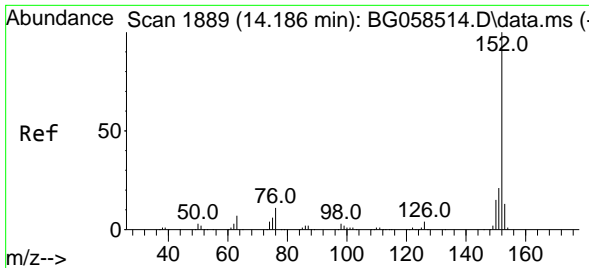


#48
 2-Nitroaniline
 Concen: 48.141 ng
 RT: 13.550 min Scan# 1780
 Delta R.T. 0.004 min
 Lab File: BG058576.D
 Acq: 2 Aug 2023 13:22



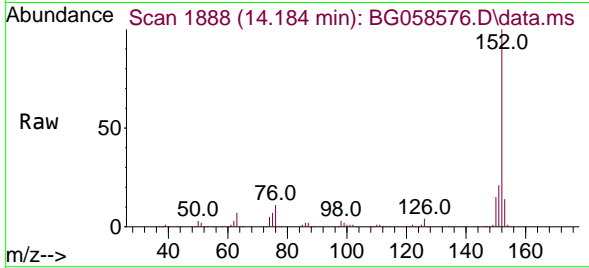
Tgt Ion: 65 Resp: 161254
 Ion Ratio Lower Upper
 65 100
 92 65.7 49.2 73.8
 138 95.2 71.5 107.3



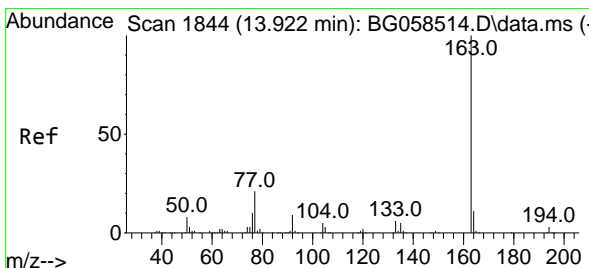
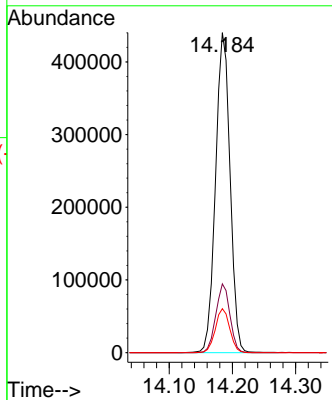
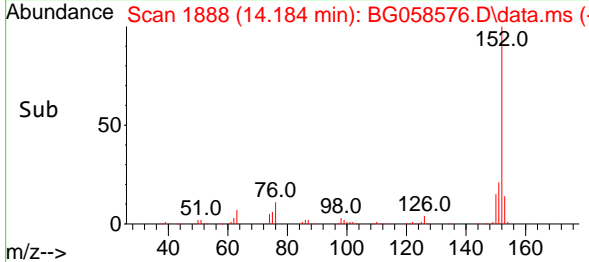


#49
 Acenaphthylene
 Concen: 47.754 ng
 RT: 14.184 min Scan# 1888
 Delta R.T. -0.002 min
 Lab File: BG058576.D
 Acq: 2 Aug 2023 13:22

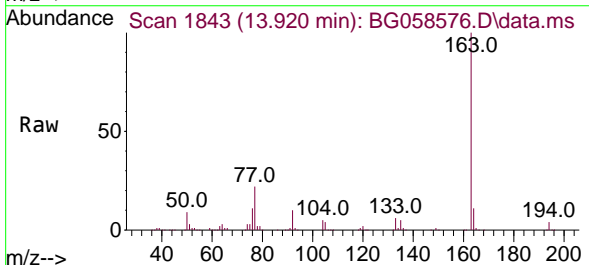
Instrument :
 BNA_G
 ClientSampleId :
 SB-22-4-6-20230721MS



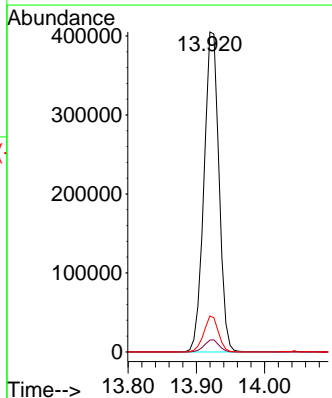
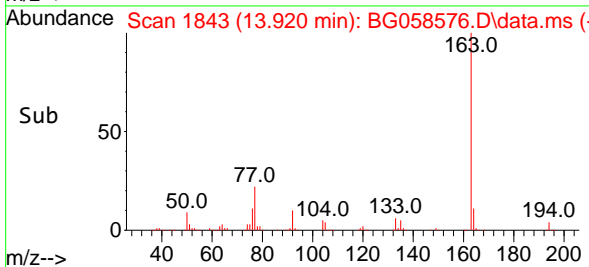
Tgt Ion:152 Resp: 701631
 Ion Ratio Lower Upper
 152 100
 151 21.5 16.5 24.7
 153 13.7 10.7 16.1

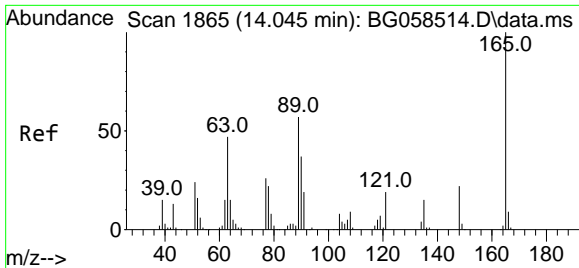


#50
 Dimethylphthalate
 Concen: 50.276 ng
 RT: 13.920 min Scan# 1843
 Delta R.T. -0.002 min
 Lab File: BG058576.D
 Acq: 2 Aug 2023 13:22



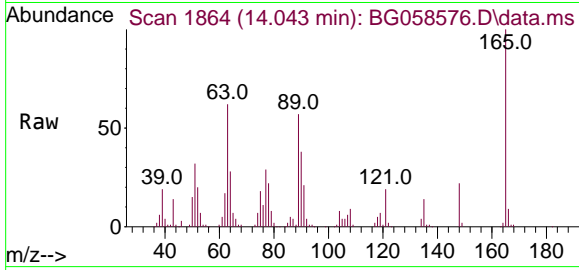
Tgt Ion:163 Resp: 618831
 Ion Ratio Lower Upper
 163 100
 194 3.7 2.7 4.1
 164 11.2 8.6 12.8





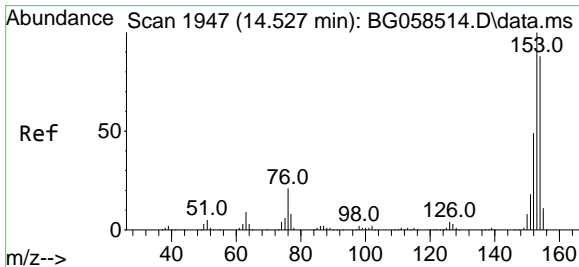
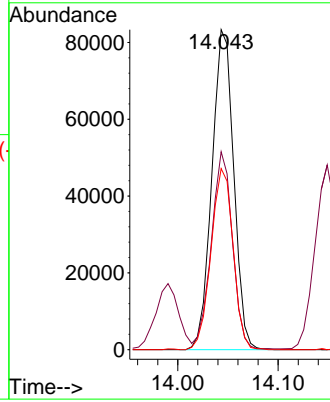
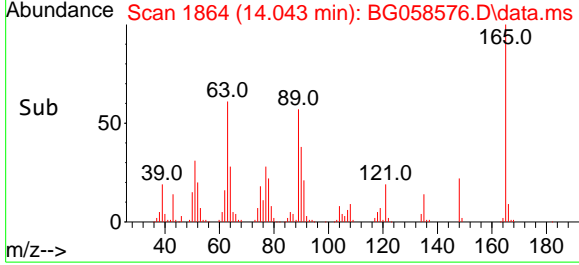
#51
 2,6-Dinitrotoluene
 Concen: 46.621 ng
 RT: 14.043 min Scan# 1865
 Delta R.T. -0.002 min
 Lab File: BG058576.D
 Acq: 2 Aug 2023 13:22

Instrument : BNA_G
 ClientSampleId : SB-22-4-6-20230721MS

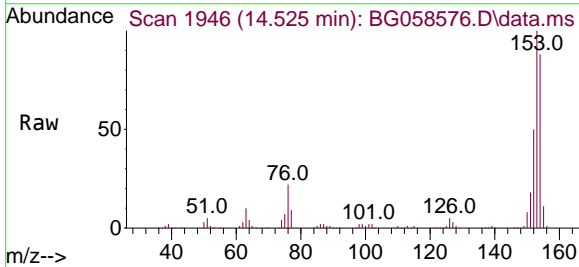


Tgt Ion:165 Resp: 125910

Ion	Ratio	Lower	Upper
165	100		
63	61.8	46.4	69.6
89	56.6	45.3	67.9

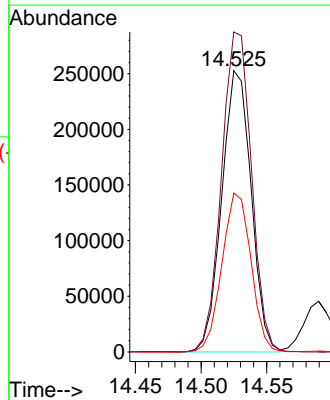
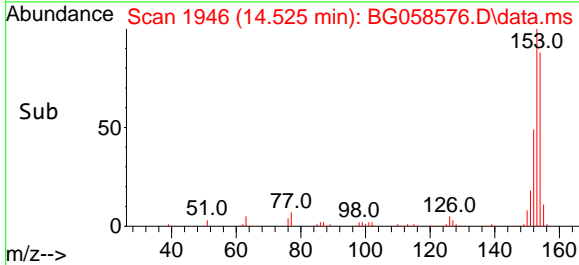


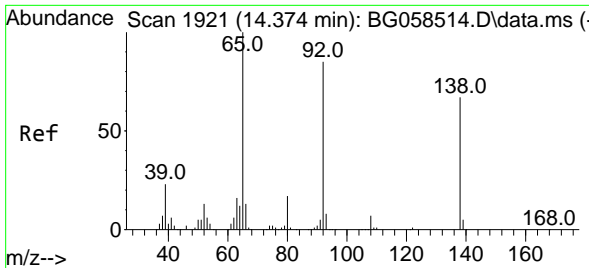
#52
 Acenaphthene
 Concen: 46.340 ng
 RT: 14.525 min Scan# 1946
 Delta R.T. -0.002 min
 Lab File: BG058576.D
 Acq: 2 Aug 2023 13:22



Tgt Ion:154 Resp: 393408

Ion	Ratio	Lower	Upper
154	100		
153	113.8	91.1	136.7
152	56.5	44.6	66.8



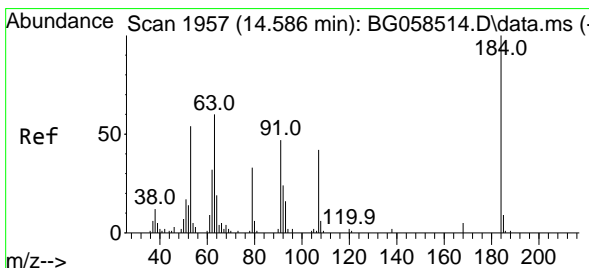
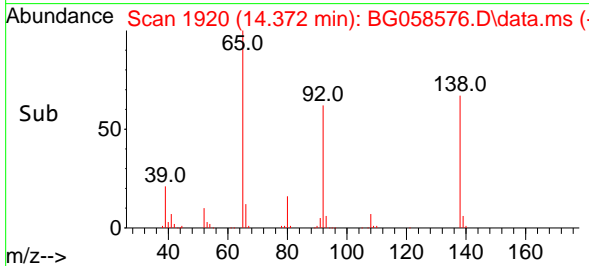
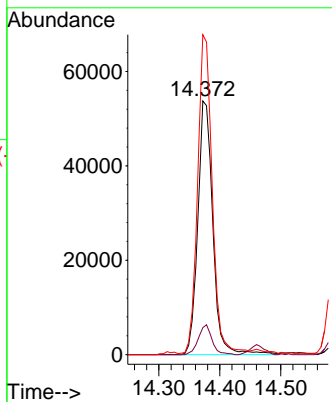
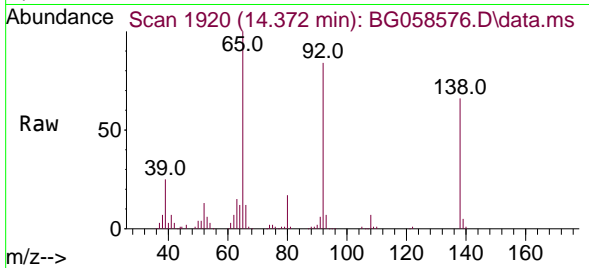


#53
 3-Nitroaniline
 Concen: 34.058 ng
 RT: 14.372 min Scan# 1920
 Delta R.T. -0.002 min
 Lab File: BG058576.D
 Acq: 2 Aug 2023 13:22

Instrument : BNA_G
 ClientSampleId : SB-22-4-6-20230721MS

Tgt Ion:138 Resp: 92026

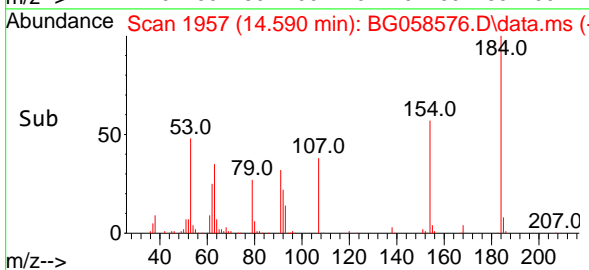
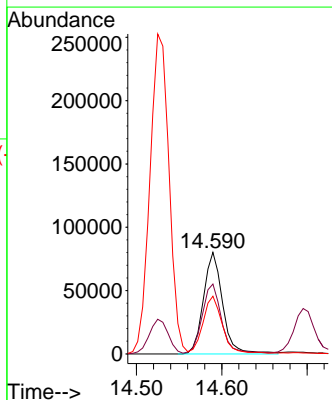
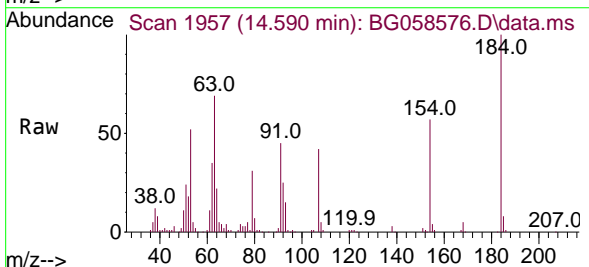
Ion	Ratio	Lower	Upper
138	100		
108	10.6	8.3	12.5
92	126.2	101.1	151.7

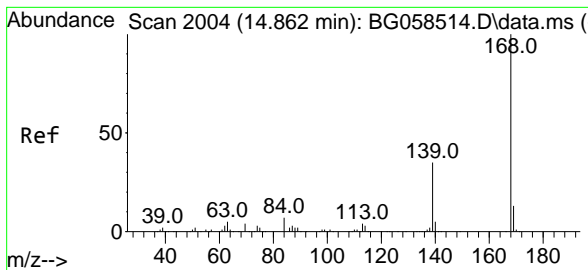


#54
 2,4-Dinitrophenol
 Concen: 81.989 ng
 RT: 14.590 min Scan# 1957
 Delta R.T. 0.004 min
 Lab File: BG058576.D
 Acq: 2 Aug 2023 13:22

Tgt Ion:184 Resp: 125137

Ion	Ratio	Lower	Upper
184	100		
63	68.8	56.7	85.1
154	56.8	46.1	69.1



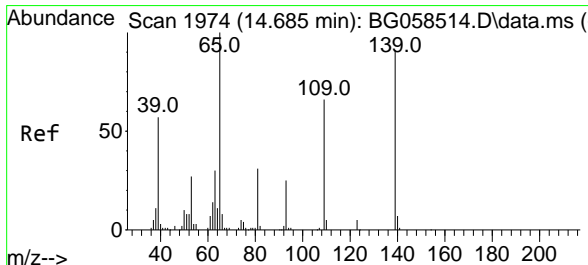
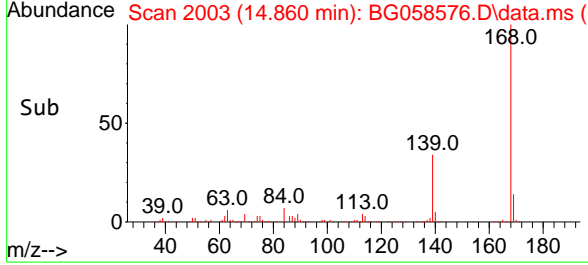
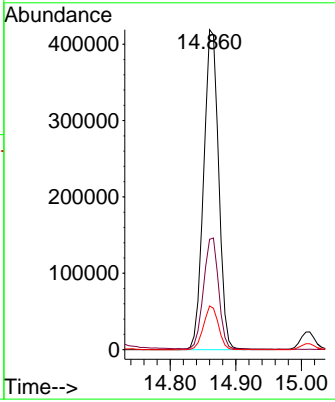
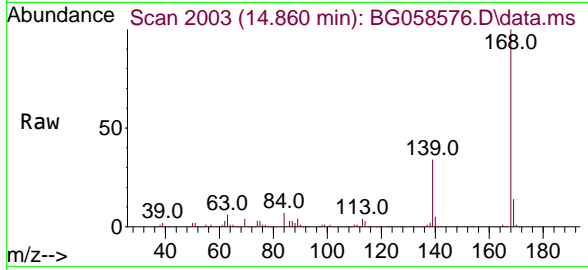


#55
 Dibenzofuran
 Concen: 45.605 ng
 RT: 14.860 min Scan# 2004
 Delta R.T. -0.002 min
 Lab File: BG058576.D
 Acq: 2 Aug 2023 13:22

Instrument : BNA_G
 ClientSampleId : SB-22-4-6-20230721MS

Tgt Ion:168 Resp: 665290

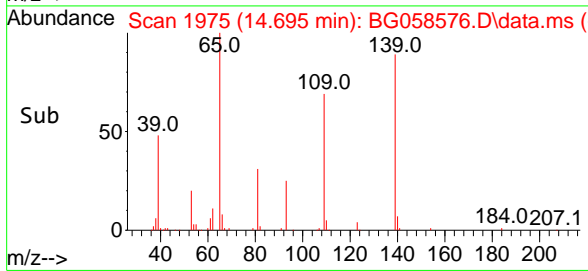
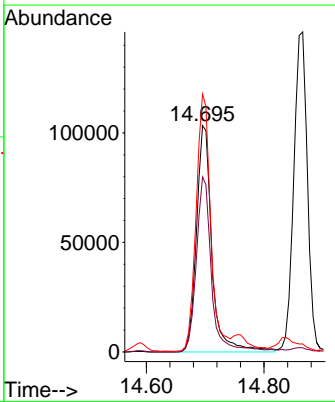
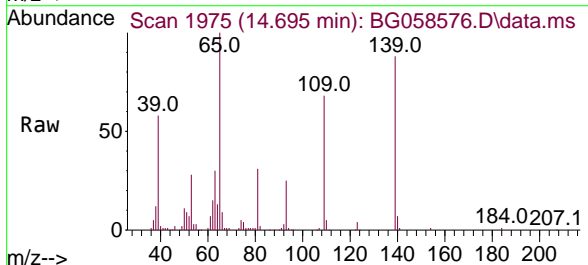
Ion	Ratio	Lower	Upper
168	100		
139	34.5	27.8	41.8
169	13.6	10.6	16.0

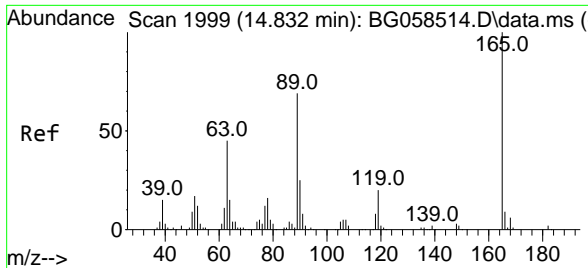


#56
 4-Nitrophenol
 Concen: 93.270 ng
 RT: 14.695 min Scan# 1975
 Delta R.T. 0.010 min
 Lab File: BG058576.D
 Acq: 2 Aug 2023 13:22

Tgt Ion:139 Resp: 187899

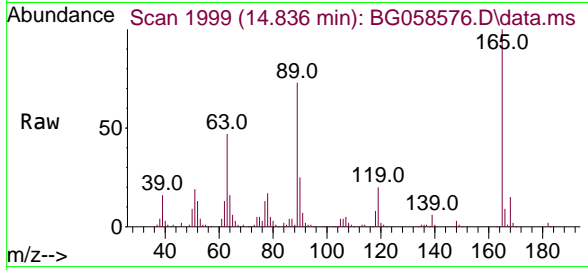
Ion	Ratio	Lower	Upper
139	100		
109	77.3	52.5	92.5
65	114.0	90.5	130.5





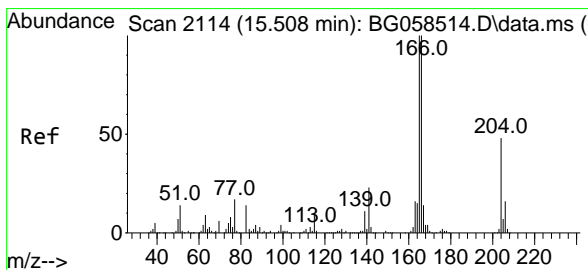
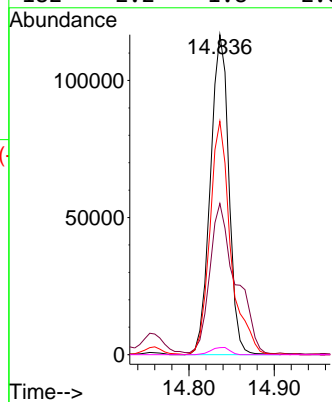
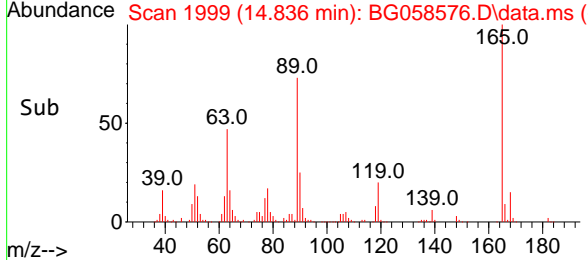
#57
 2,4-Dinitrotoluene
 Concen: 46.807 ng
 RT: 14.836 min Scan# 1999
 Delta R.T. 0.004 min
 Lab File: BG058576.D
 Acq: 2 Aug 2023 13:22

Instrument : BNA_G
 ClientSampleId : SB-22-4-6-20230721MS

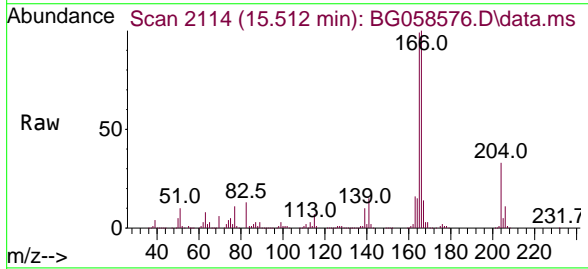


Tgt Ion:165 Resp: 175257

Ion	Ratio	Lower	Upper
165	100		
63	47.3	36.6	54.8
89	72.9	55.4	83.0
182	2.2	1.8	2.6

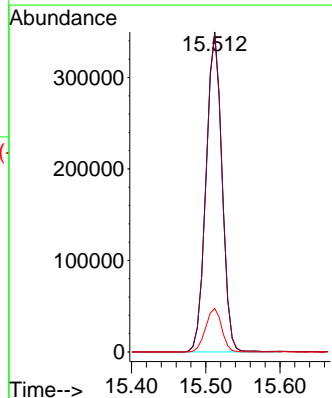
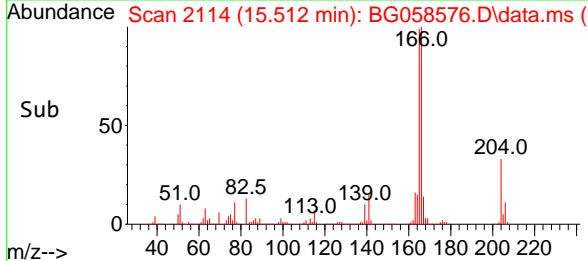


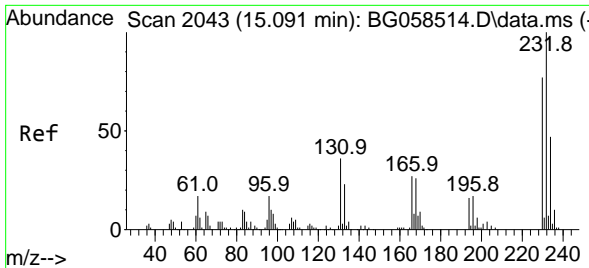
#58
 Fluorene
 Concen: 45.039 ng
 RT: 15.512 min Scan# 2114
 Delta R.T. 0.004 min
 Lab File: BG058576.D
 Acq: 2 Aug 2023 13:22



Tgt Ion:166 Resp: 521952

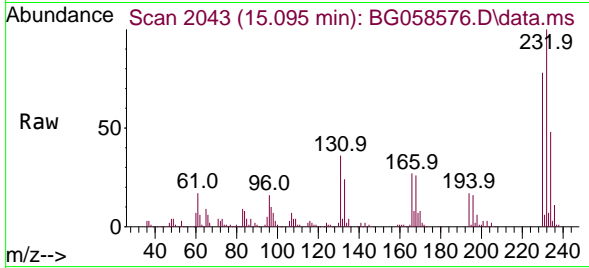
Ion	Ratio	Lower	Upper
166	100		
165	99.0	80.0	120.0
167	13.6	11.3	16.9



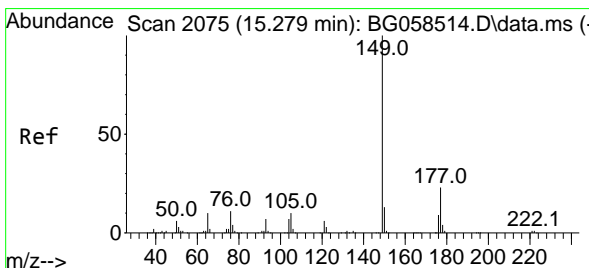
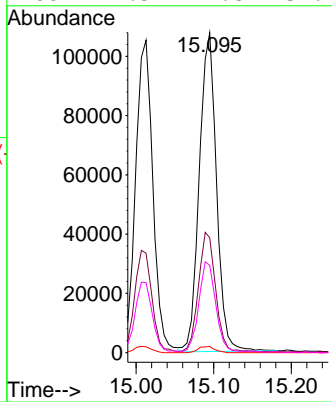
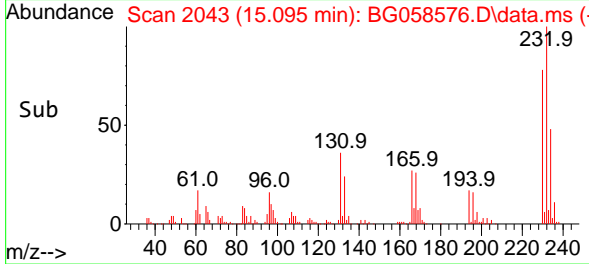


#59
 2,3,4,6-Tetrachlorophenol
 Concen: 47.651 ng
 RT: 15.095 min Scan# 2043
 Delta R.T. 0.004 min
 Lab File: BG058576.D
 Acq: 2 Aug 2023 13:22

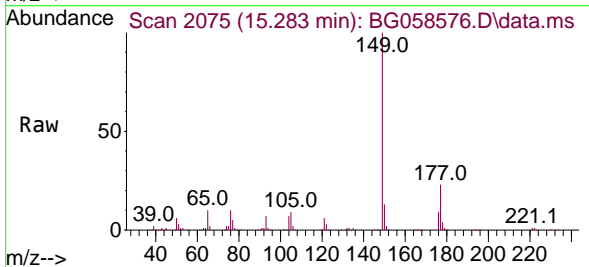
Instrument : BNA_G
 ClientSampleId : SB-22-4-6-20230721MS



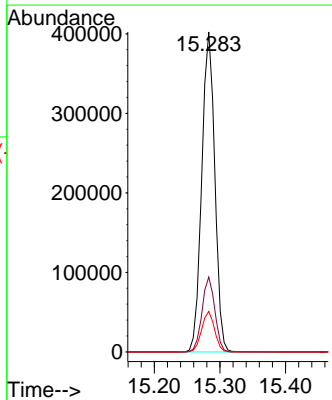
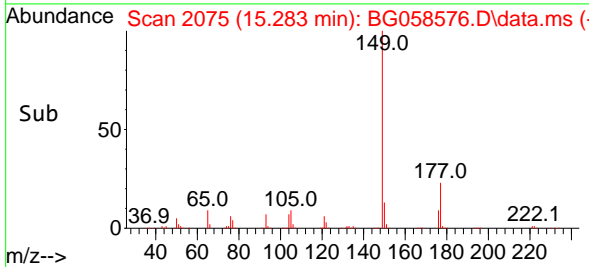
Tgt Ion:232 Resp: 165747
 Ion Ratio Lower Upper
 232 100
 131 37.7 30.0 45.0
 130 1.9 1.5 2.3
 166 27.5 22.8 34.2

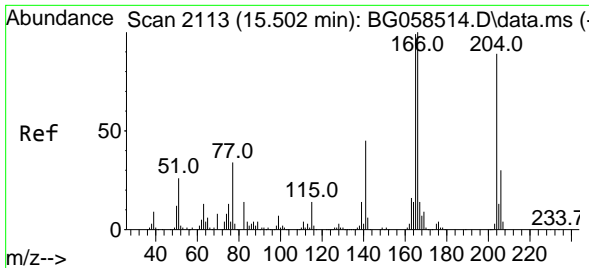


#60
 Diethylphthalate
 Concen: 43.975 ng
 RT: 15.283 min Scan# 2075
 Delta R.T. 0.004 min
 Lab File: BG058576.D
 Acq: 2 Aug 2023 13:22



Tgt Ion:149 Resp: 551427
 Ion Ratio Lower Upper
 149 100
 177 23.4 18.2 27.4
 150 12.7 10.2 15.4

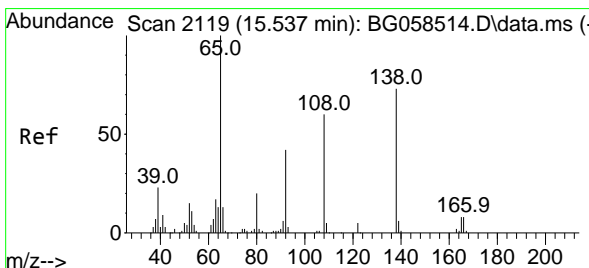
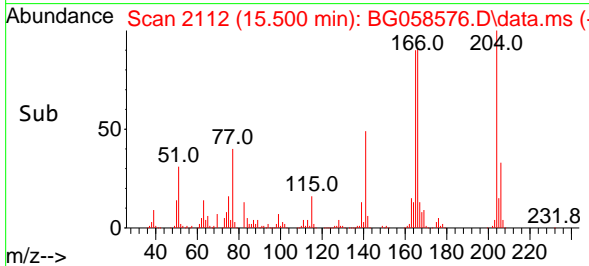
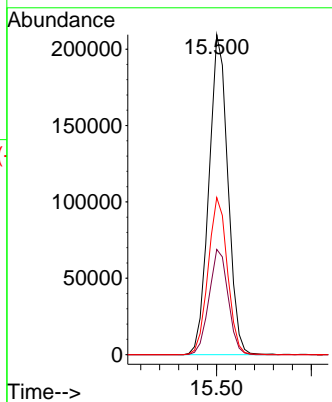
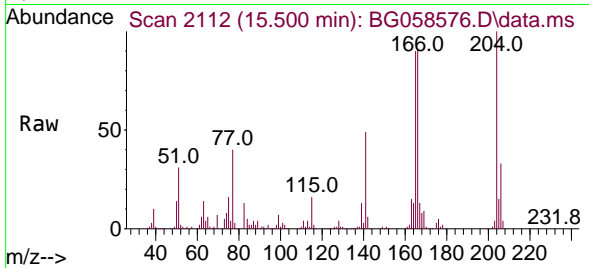




#61
 4-Chlorophenyl-phenylether
 Concen: 45.006 ng
 RT: 15.500 min Scan# 2112
 Delta R.T. -0.002 min
 Lab File: BG058576.D
 Acq: 2 Aug 2023 13:22

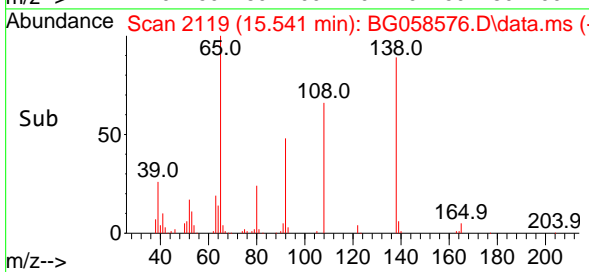
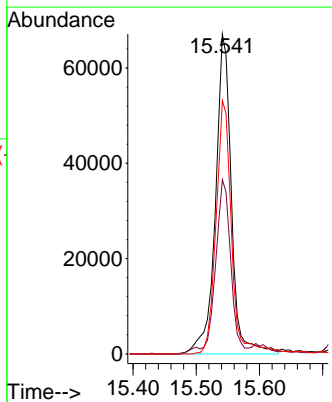
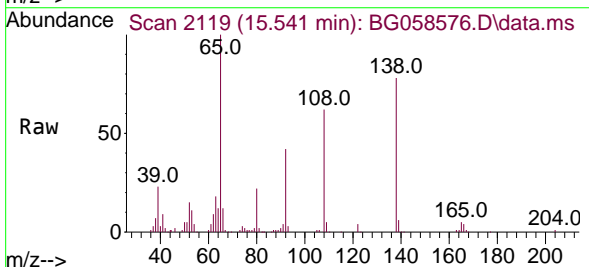
Instrument : BNA_G
 ClientSampleId : SB-22-4-6-20230721MS

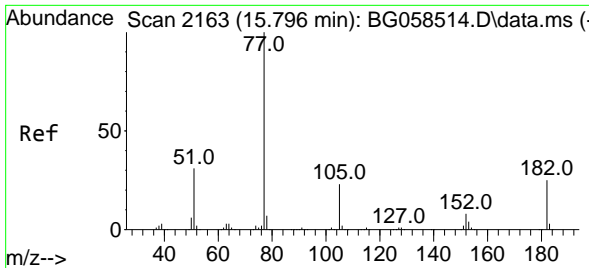
Tgt Ion	Resp	Lower	Upper
204	100		
206	32.9	27.0	40.4
141	49.1	40.8	61.2



#62
 4-Nitroaniline
 Concen: 45.823 ng
 RT: 15.541 min Scan# 2119
 Delta R.T. 0.004 min
 Lab File: BG058576.D
 Acq: 2 Aug 2023 13:22

Tgt Ion	Resp	Lower	Upper
138	100		
92	54.4	37.3	77.3
108	79.2	62.6	102.6



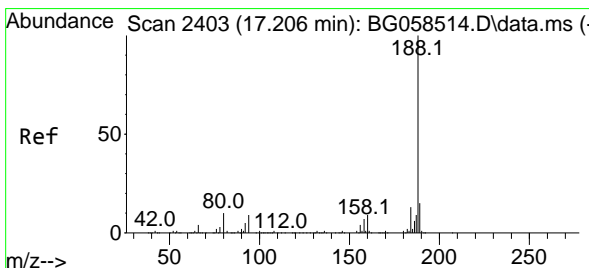
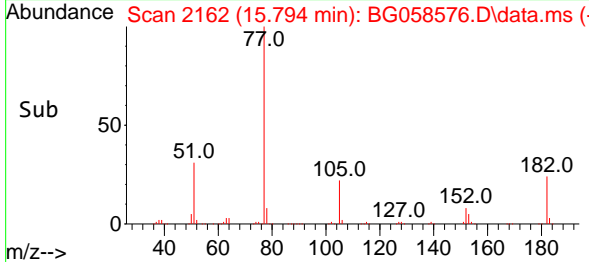
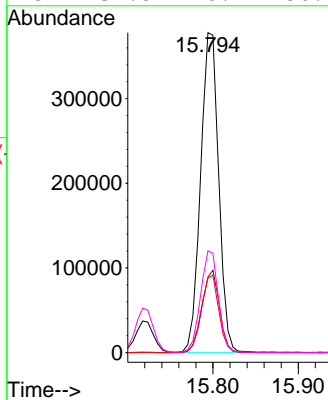
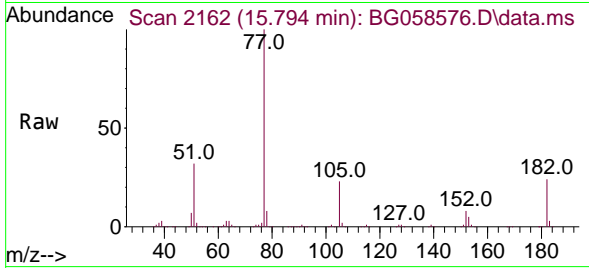


#63
 Azobenzene
 Concen: 44.961 ng
 RT: 15.794 min Scan# 2162
 Delta R.T. -0.002 min
 Lab File: BG058576.D
 Acq: 2 Aug 2023 13:22

Instrument : BNA_G
 ClientSampleId : SB-22-4-6-20230721MS

Tgt Ion: 77 Resp: 555309

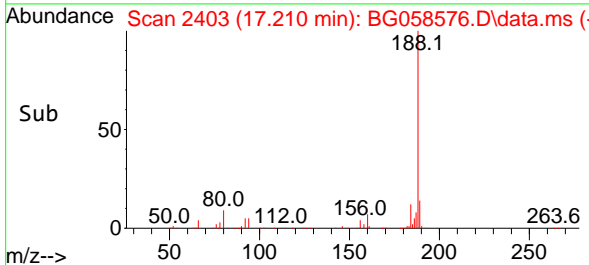
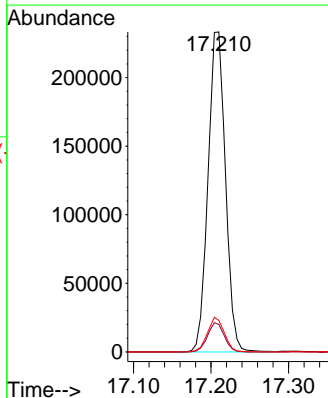
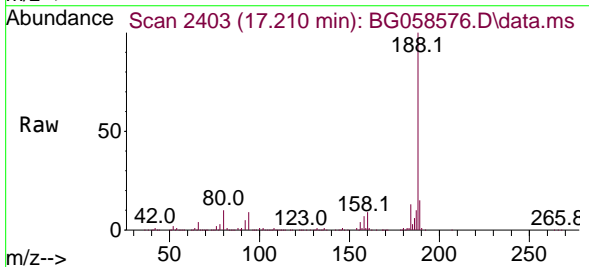
Ion	Ratio	Lower	Upper
77	100		
182	23.6	4.6	44.6
105	23.3	3.3	43.3
51	31.8	10.9	50.9

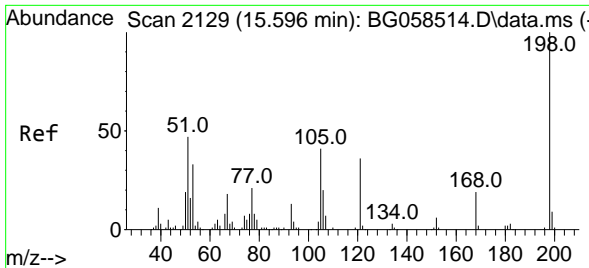


#64
 Phenanthrene-d10
 Concen: 20.000 ng
 RT: 17.210 min Scan# 2403
 Delta R.T. 0.004 min
 Lab File: BG058576.D
 Acq: 2 Aug 2023 13:22

Tgt Ion: 188 Resp: 364824

Ion	Ratio	Lower	Upper
188	100		
94	8.6	7.0	10.6
80	9.8	8.1	12.1

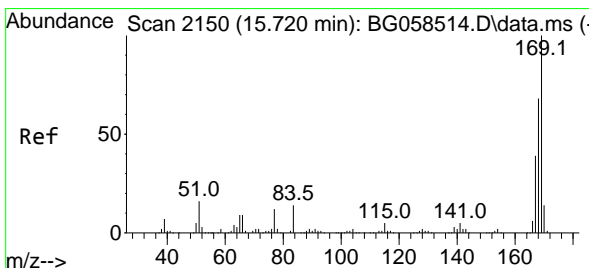
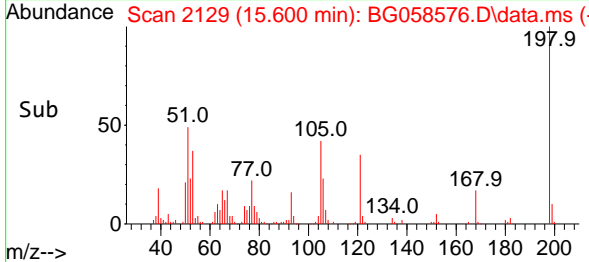
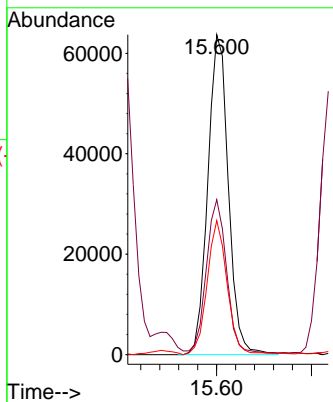
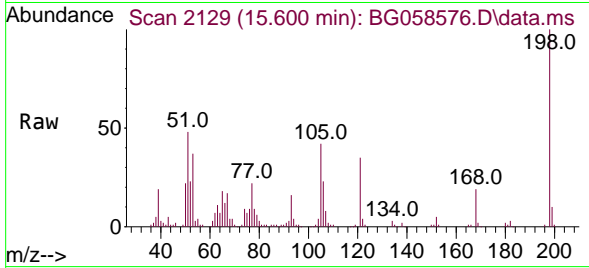




#65
 4,6-Dinitro-2-methylphenol
 Concen: 47.666 ng
 RT: 15.600 min Scan# 2129
 Delta R.T. 0.004 min
 Lab File: BG058576.D
 Acq: 2 Aug 2023 13:22

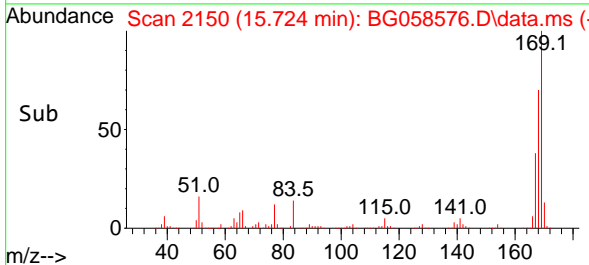
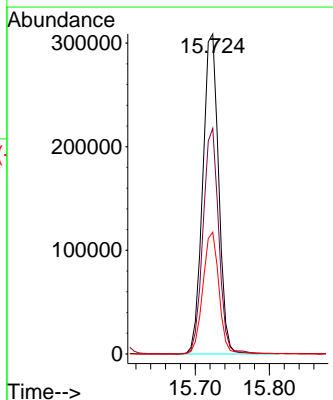
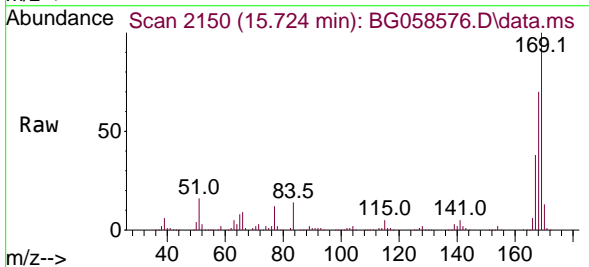
Instrument : BNA_G
 ClientSampleId : SB-22-4-6-20230721MS

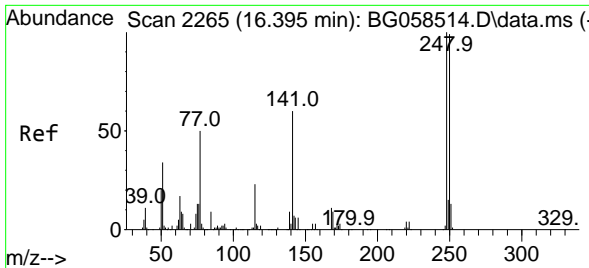
Tgt Ion:198 Resp: 95884
 Ion Ratio Lower Upper
 198 100
 51 48.4 29.3 69.3
 105 41.9 21.0 61.0



#66
 n-Nitrosodiphenylamine
 Concen: 48.299 ng
 RT: 15.724 min Scan# 2150
 Delta R.T. 0.004 min
 Lab File: BG058576.D
 Acq: 2 Aug 2023 13:22

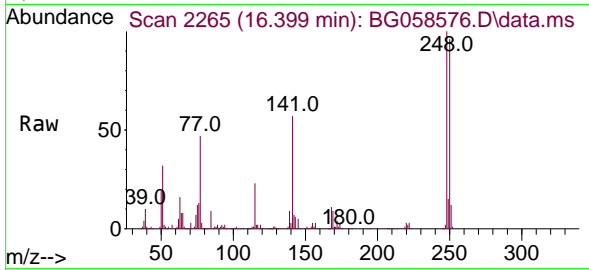
Tgt Ion:169 Resp: 458618
 Ion Ratio Lower Upper
 169 100
 168 70.5 54.6 82.0
 167 38.0 31.3 46.9



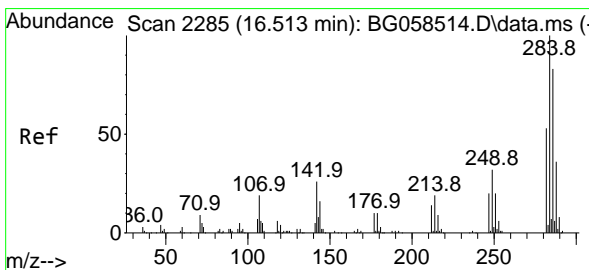
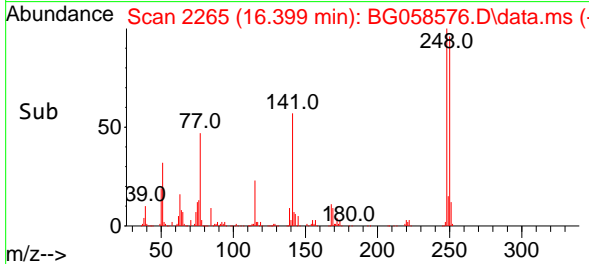
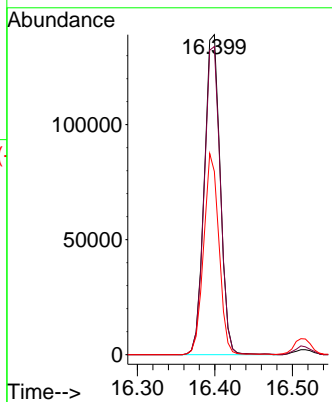


#67
 4-Bromophenyl-phenylether
 Concen: 47.924 ng
 RT: 16.399 min Scan# 21
 Delta R.T. 0.004 min
 Lab File: BG058576.D
 Acq: 2 Aug 2023 13:22

Instrument :
 BNA_G
 ClientSampleId :
 SB-22-4-6-20230721MS

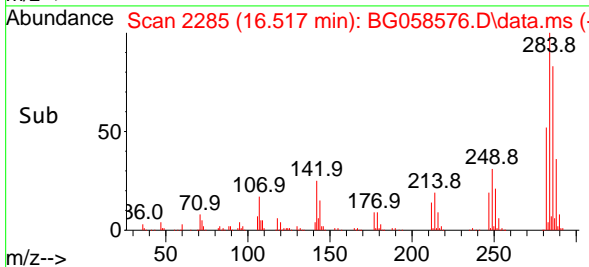
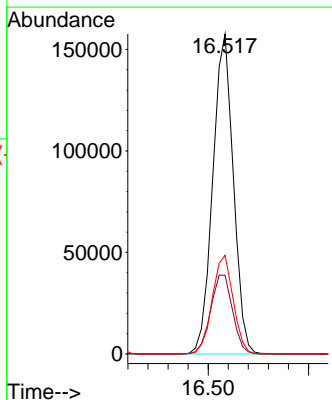
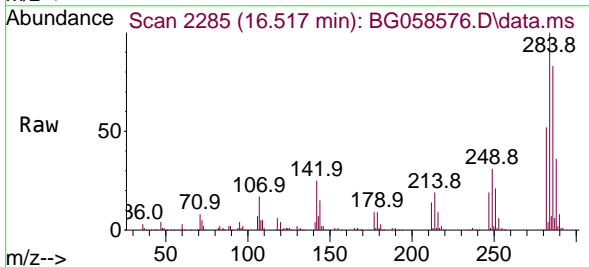


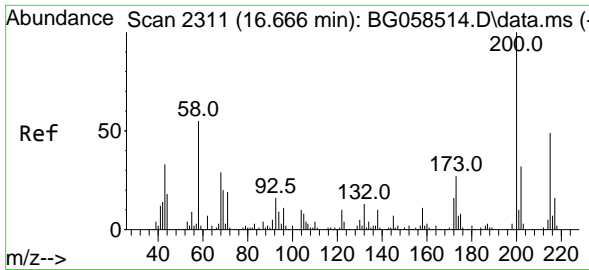
Tgt Ion:248 Resp: 198302
 Ion Ratio Lower Upper
 248 100
 250 96.3 79.5 119.3
 141 57.2 48.2 72.2



#68
 Hexachlorobenzene
 Concen: 51.179 ng
 RT: 16.517 min Scan# 2285
 Delta R.T. 0.004 min
 Lab File: BG058576.D
 Acq: 2 Aug 2023 13:22

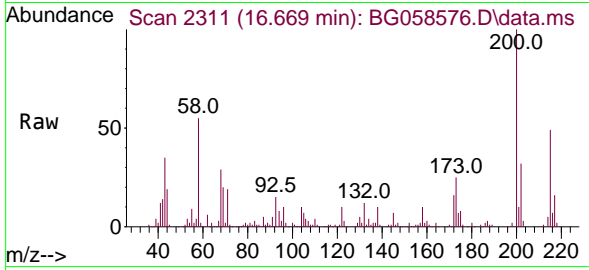
Tgt Ion:284 Resp: 224405
 Ion Ratio Lower Upper
 284 100
 142 24.6 21.0 31.4
 249 30.8 25.5 38.3



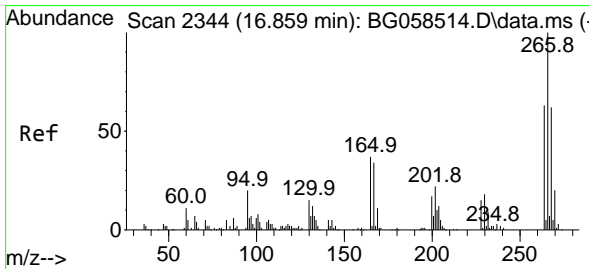
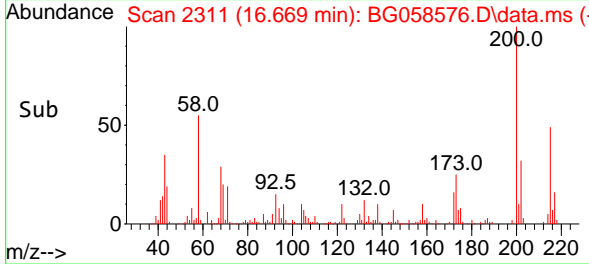
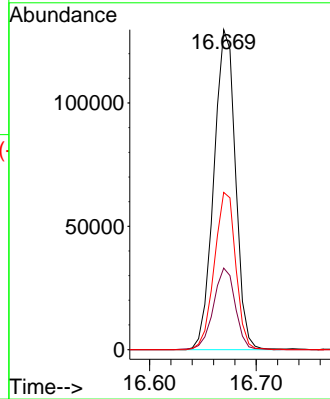


#69
 Atrazine
 Concen: 57.049 ng
 RT: 16.669 min Scan# 2311
 Delta R.T. 0.004 min
 Lab File: BG058576.D
 Acq: 2 Aug 2023 13:22

Instrument :
 BNA_G
 ClientSampleId :
 SB-22-4-6-20230721MS

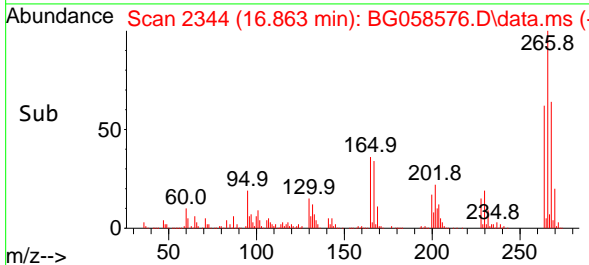
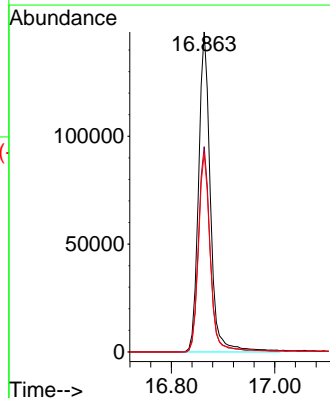
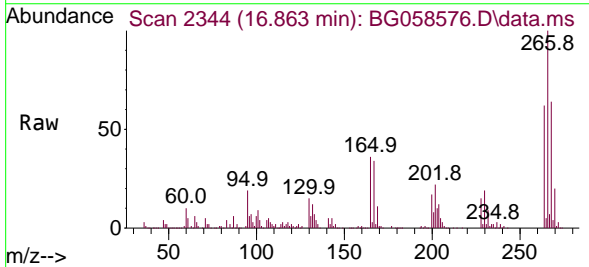


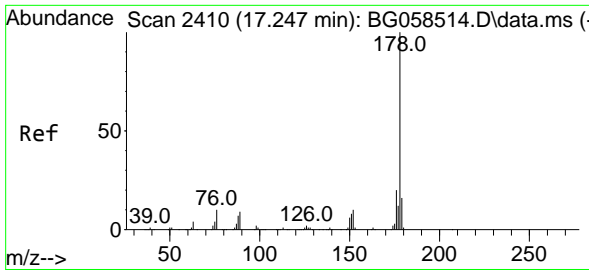
Tgt Ion:200 Resp: 182866
 Ion Ratio Lower Upper
 200 100
 173 25.5 6.5 46.5
 215 49.1 28.9 68.9



#70
 Pentachlorophenol
 Concen: 88.579 ng
 RT: 16.863 min Scan# 2344
 Delta R.T. 0.004 min
 Lab File: BG058576.D
 Acq: 2 Aug 2023 13:22

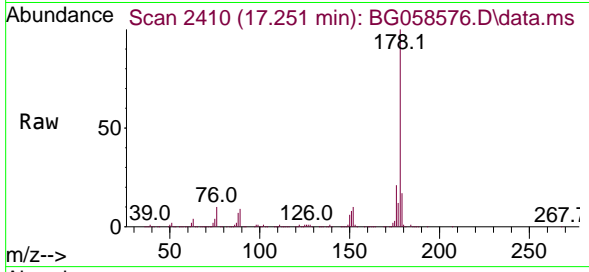
Tgt Ion:266 Resp: 235086
 Ion Ratio Lower Upper
 266 100
 268 64.1 49.9 74.9
 264 62.0 50.2 75.4





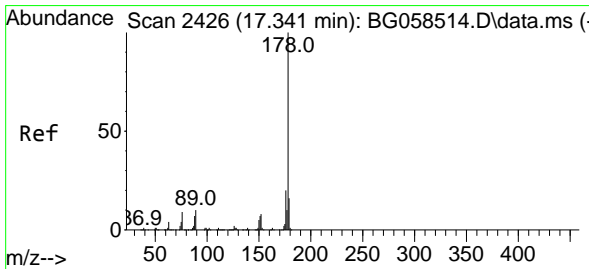
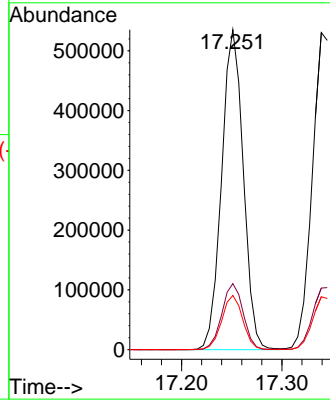
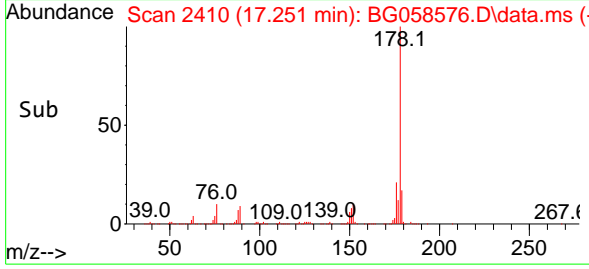
#71
 Phenanthrene
 Concen: 46.436 ng
 RT: 17.251 min Scan# 2410
 Delta R.T. 0.004 min
 Lab File: BG058576.D
 Acq: 2 Aug 2023 13:22

Instrument : BNA_G
 ClientSampleId : SB-22-4-6-20230721MS

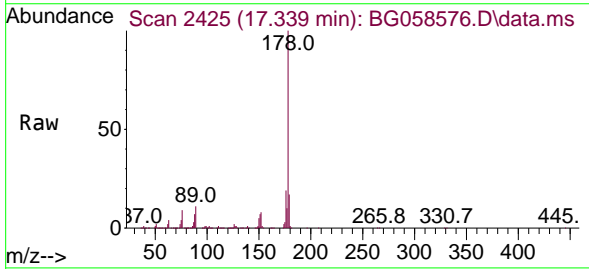


Tgt Ion:178 Resp: 803414

Ion	Ratio	Lower	Upper
178	100		
176	20.6	16.3	24.5
179	16.9	13.1	19.7

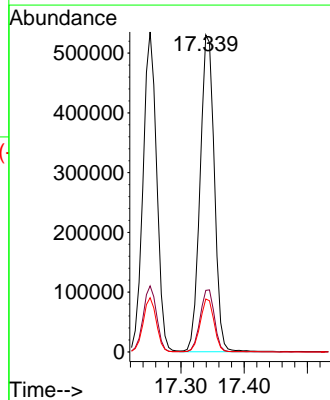
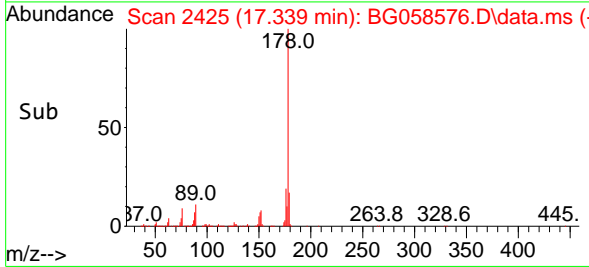


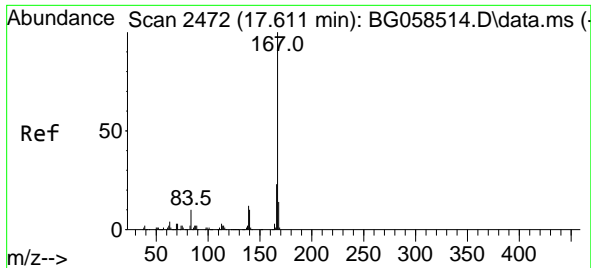
#72
 Anthracene
 Concen: 46.692 ng
 RT: 17.339 min Scan# 2425
 Delta R.T. -0.002 min
 Lab File: BG058576.D
 Acq: 2 Aug 2023 13:22



Tgt Ion:178 Resp: 828904

Ion	Ratio	Lower	Upper
178	100		
176	19.4	16.0	24.0
179	16.7	12.9	19.3

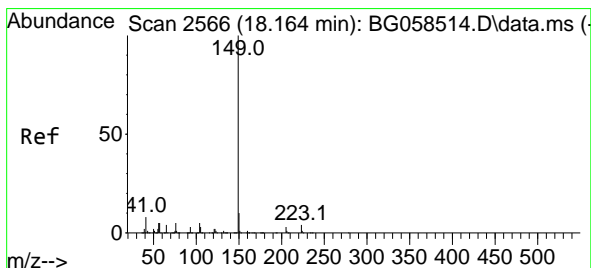
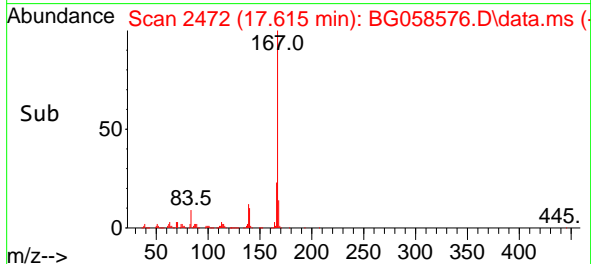
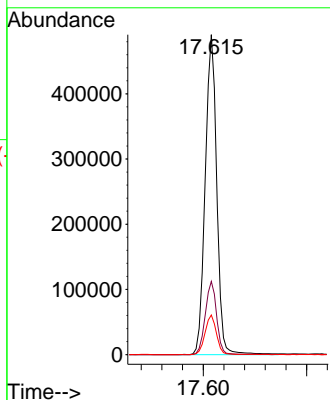
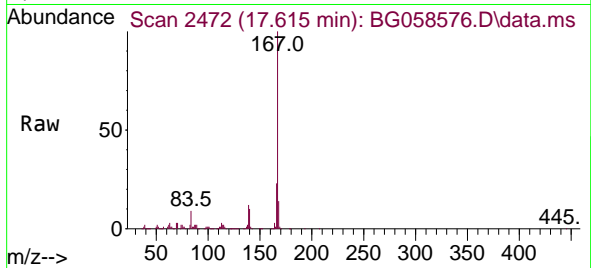




#73
 Carbazole
 Concen: 48.461 ng
 RT: 17.615 min Scan# 2472
 Delta R.T. 0.004 min
 Lab File: BG058576.D
 Acq: 2 Aug 2023 13:22

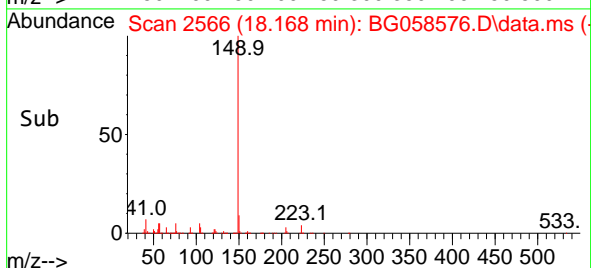
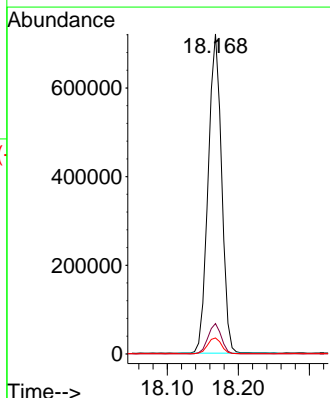
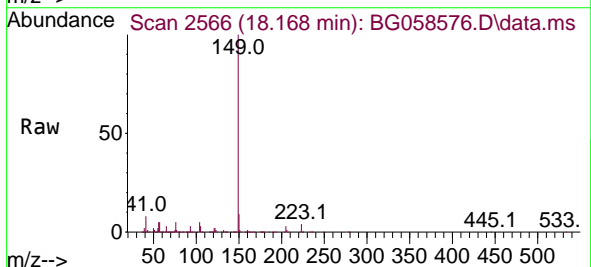
Instrument :
 BNA_G
 ClientSampleId :
 SB-22-4-6-20230721MS

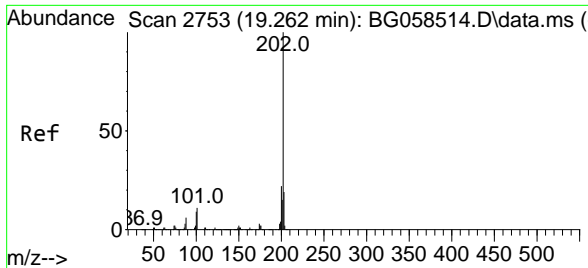
Tgt Ion:167 Resp: 758653
 Ion Ratio Lower Upper
 167 100
 166 22.9 18.4 27.6
 139 12.4 10.0 15.0



#74
 Di-n-butylphthalate
 Concen: 48.056 ng
 RT: 18.168 min Scan# 2566
 Delta R.T. 0.004 min
 Lab File: BG058576.D
 Acq: 2 Aug 2023 13:22

Tgt Ion:149 Resp: 942305
 Ion Ratio Lower Upper
 149 100
 150 9.5 7.8 11.6
 104 5.0 4.0 6.0

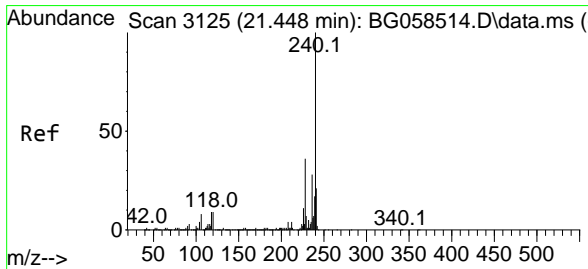
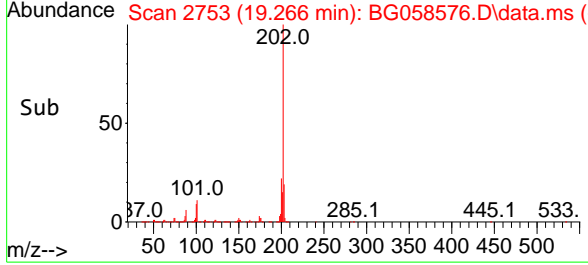
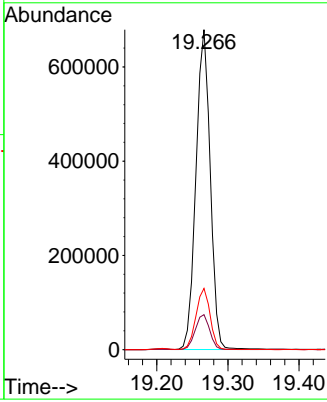
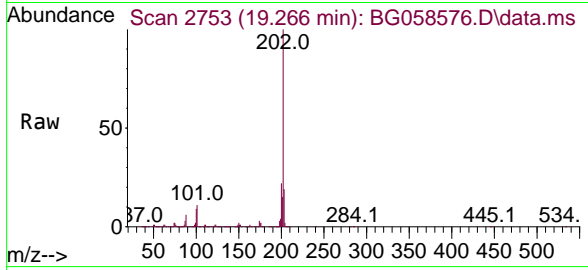




#75
 Fluoranthene
 Concen: 45.388 ng
 RT: 19.266 min Scan# 21
 Delta R.T. 0.004 min
 Lab File: BG058576.D
 Acq: 2 Aug 2023 13:22

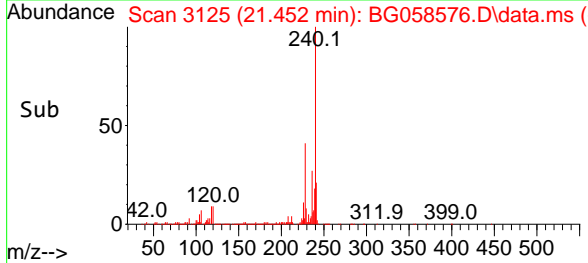
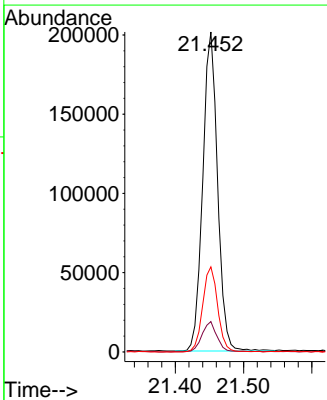
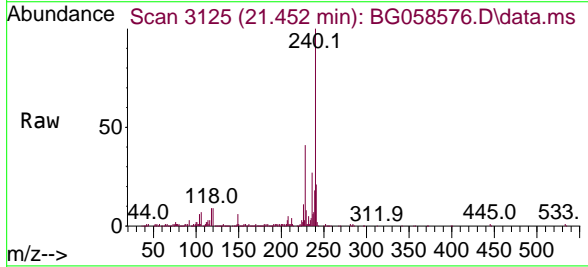
Instrument : BNA_G
 ClientSampleId : SB-22-4-6-20230721MS

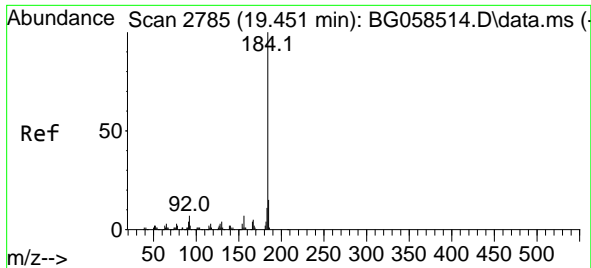
Tgt Ion	Resp	Lower	Upper
202	100		
101	10.9	0.0	31.4
203	19.1	0.0	39.0



#76
 Chrysene-d12
 Concen: 20.000 ng
 RT: 21.452 min Scan# 3125
 Delta R.T. 0.004 min
 Lab File: BG058576.D
 Acq: 2 Aug 2023 13:22

Tgt Ion	Resp	Lower	Upper
240	100		
120	9.5	7.4	11.0
236	26.6	22.2	33.4

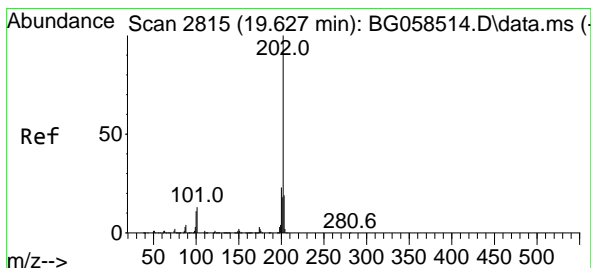
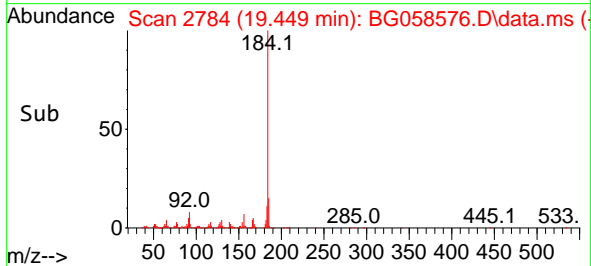
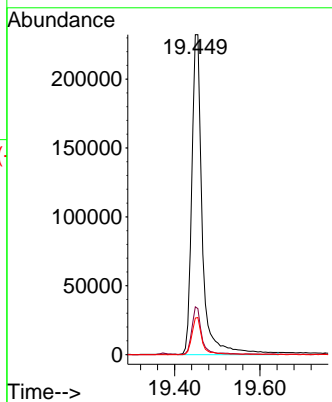
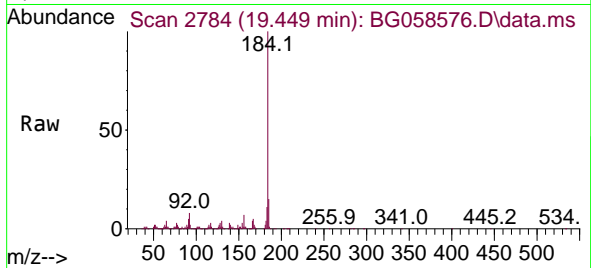




#77
 Benzidine
 Concen: 86.497 ng
 RT: 19.449 min Scan# 21
 Delta R.T. -0.002 min
 Lab File: BG058576.D
 Acq: 2 Aug 2023 13:22

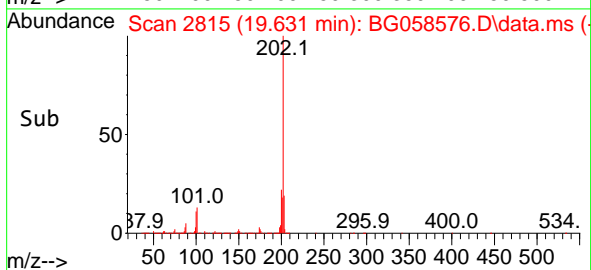
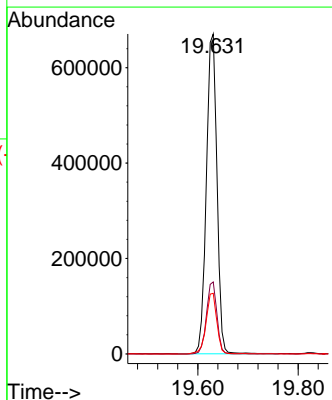
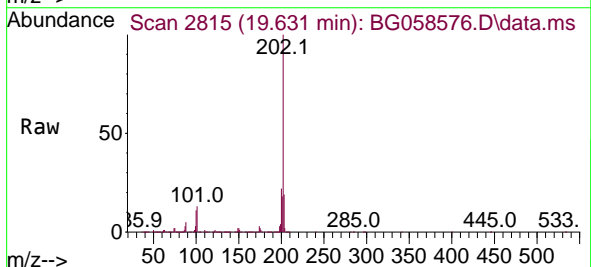
Instrument :
 BNA_G
 ClientSampleId :
 SB-22-4-6-20230721MS

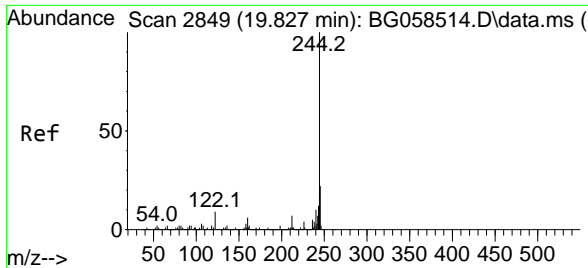
Tgt Ion:184 Resp: 399492
 Ion Ratio Lower Upper
 184 100
 185 14.9 11.9 17.9
 183 11.4 8.7 13.1



#78
 Pyrene
 Concen: 47.387 ng
 RT: 19.631 min Scan# 2815
 Delta R.T. 0.004 min
 Lab File: BG058576.D
 Acq: 2 Aug 2023 13:22

Tgt Ion:202 Resp: 982230
 Ion Ratio Lower Upper
 202 100
 200 22.5 18.2 27.2
 203 19.0 15.1 22.7



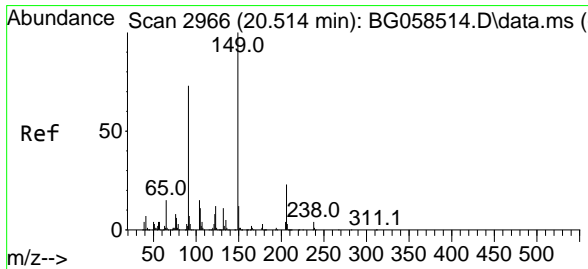
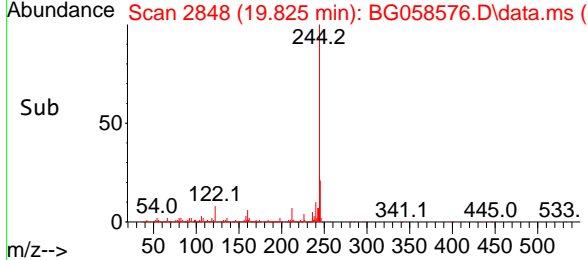
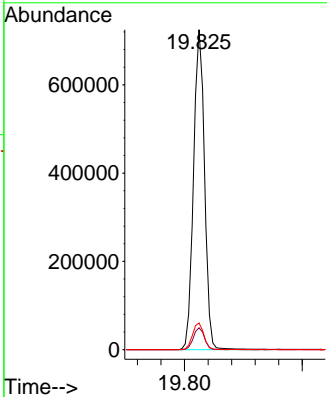
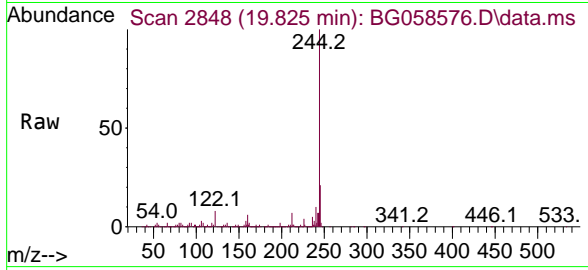


#79
 Terphenyl-d14
 Concen: 58.032 ng
 RT: 19.825 min Scan# 2849
 Delta R.T. -0.002 min
 Lab File: BG058576.D
 Acq: 2 Aug 2023 13:22

Instrument :
 BNA_G
ClientSampleId :
 SB-22-4-6-20230721MS

Tgt Ion:244 Resp: 939886

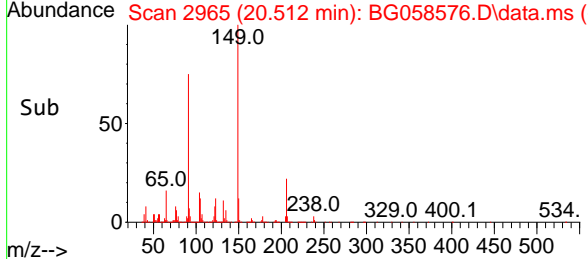
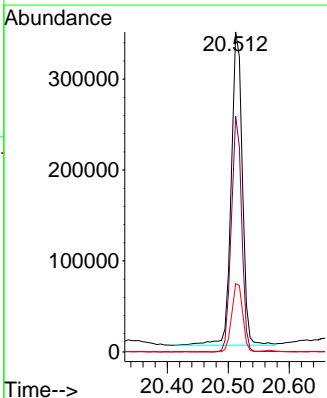
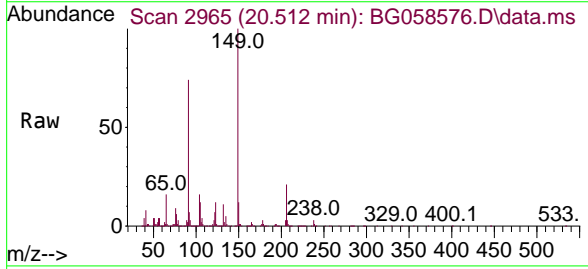
Ion	Ratio	Lower	Upper
244	100		
212	6.8	5.9	8.9
122	8.3	6.8	10.2

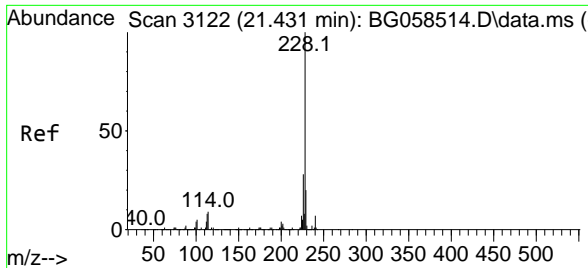


#80
 Butylbenzylphthalate
 Concen: 51.582 ng
 RT: 20.512 min Scan# 2965
 Delta R.T. -0.002 min
 Lab File: BG058576.D
 Acq: 2 Aug 2023 13:22

Tgt Ion:149 Resp: 439175

Ion	Ratio	Lower	Upper
149	100		
91	73.6	58.4	87.6
206	21.3	18.3	27.5



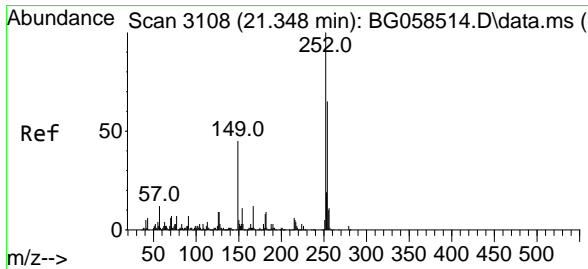
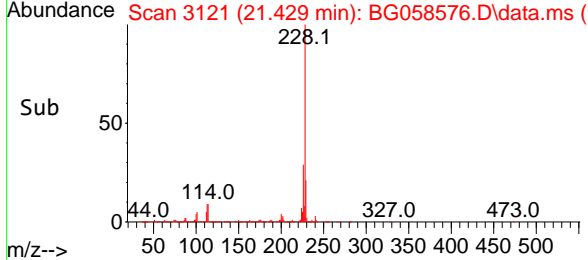
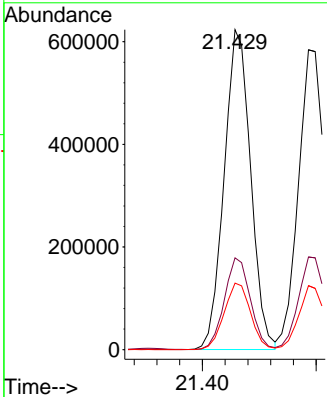
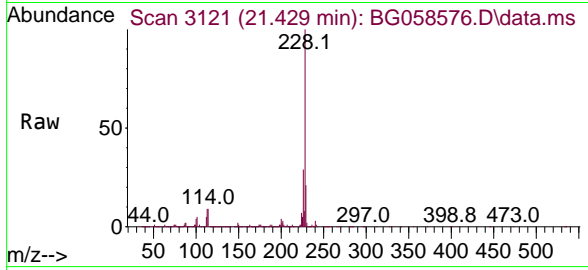


#81
 Benzo(a)anthracene
 Concen: 48.133 ng
 RT: 21.429 min Scan# 3122
 Delta R.T. -0.002 min
 Lab File: BG058576.D
 Acq: 2 Aug 2023 13:22

Instrument : BNA_G
 ClientSampleId : SB-22-4-6-20230721MS

Tgt Ion:228 Resp: 1008876

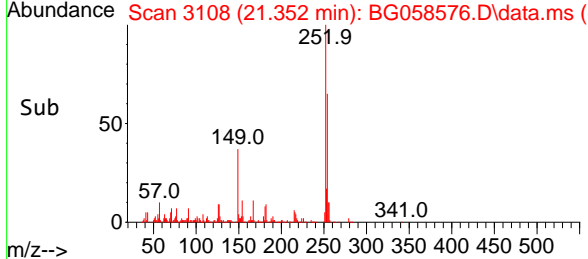
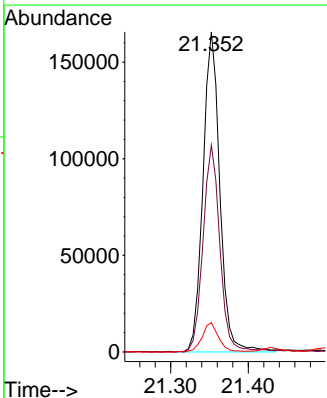
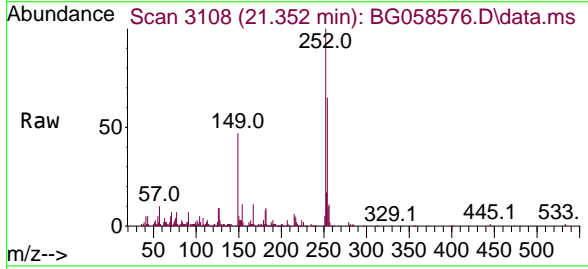
Ion	Ratio	Lower	Upper
228	100		
226	28.7	22.6	33.8
229	20.8	16.3	24.5

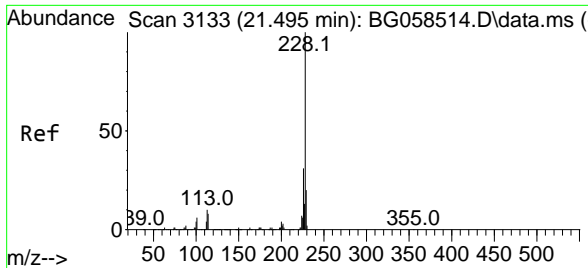


#82
 3,3'-Dichlorobenzidine
 Concen: 35.259 ng
 RT: 21.352 min Scan# 3108
 Delta R.T. 0.004 min
 Lab File: BG058576.D
 Acq: 2 Aug 2023 13:22

Tgt Ion:252 Resp: 249874

Ion	Ratio	Lower	Upper
252	100		
254	64.6	52.2	78.4
126	9.1	7.2	10.8



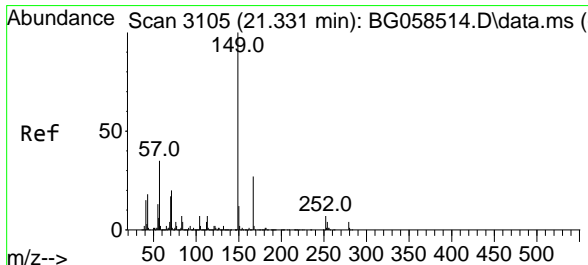
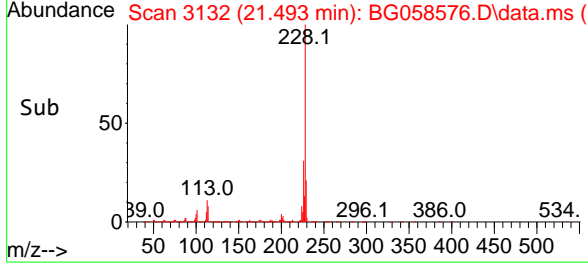
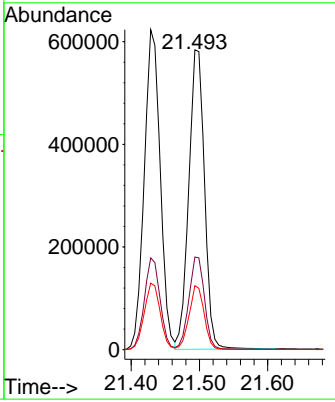
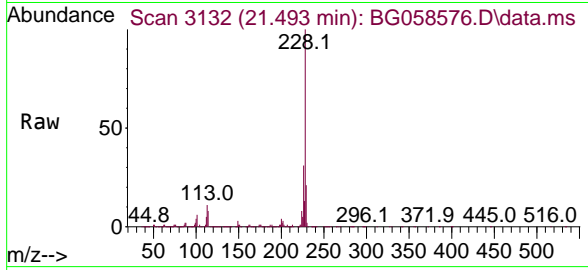


#83
 Chrysene
 Concen: 46.633 ng
 RT: 21.493 min Scan# 3133
 Delta R.T. -0.002 min
 Lab File: BG058576.D
 Acq: 2 Aug 2023 13:22

Instrument : BNA_G
 ClientSampleId : SB-22-4-6-20230721MS

Tgt Ion:228 Resp: 937172

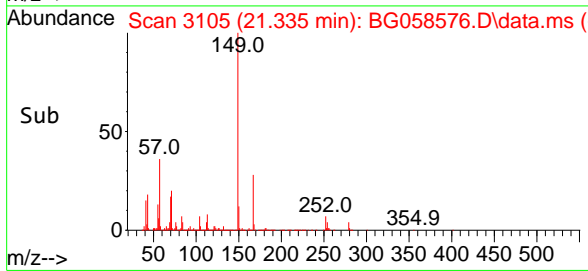
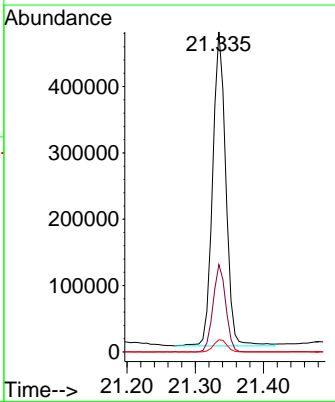
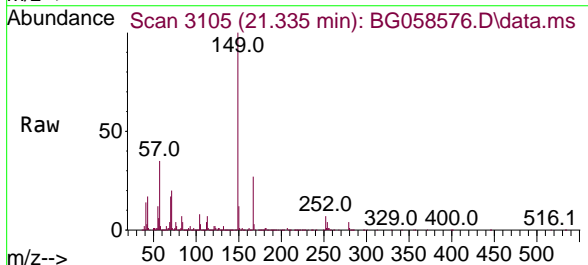
Ion	Ratio	Lower	Upper
228	100		
226	30.9	25.0	37.6
229	21.3	16.3	24.5

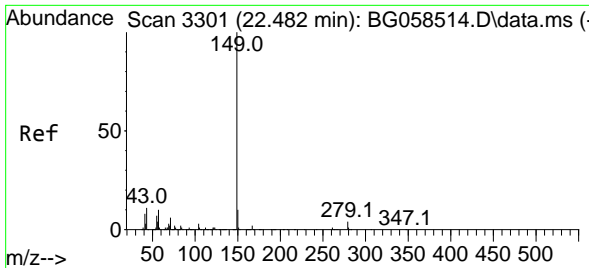


#84
 Bis(2-ethylhexyl)phthalate
 Concen: 50.715 ng
 RT: 21.335 min Scan# 3105
 Delta R.T. 0.004 min
 Lab File: BG058576.D
 Acq: 2 Aug 2023 13:22

Tgt Ion:149 Resp: 630991

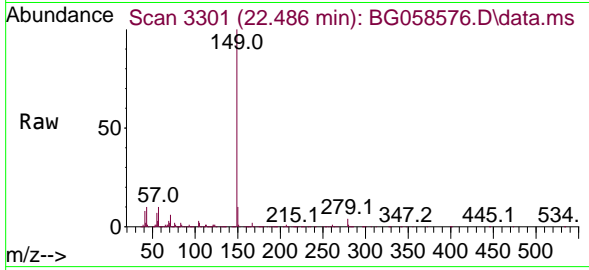
Ion	Ratio	Lower	Upper
149	100		
167	27.3	21.8	32.8
279	3.8	2.9	4.3





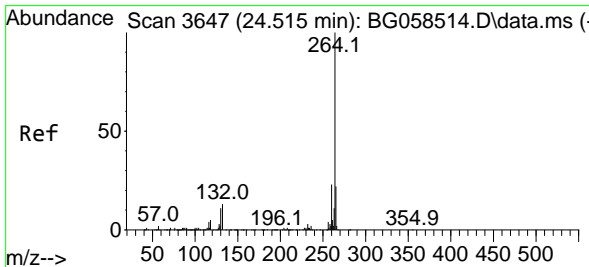
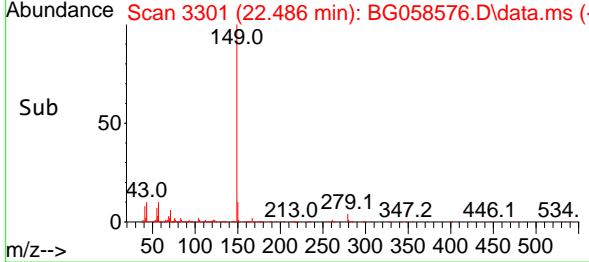
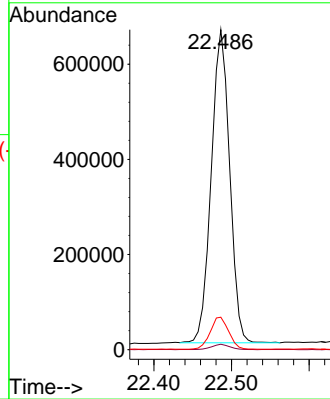
#85
 Di-n-octyl phthalate
 Concen: 49.597 ng
 RT: 22.486 min Scan# 3301
 Delta R.T. 0.004 min
 Lab File: BG058576.D
 Acq: 2 Aug 2023 13:22

Instrument : BNA_G
 ClientSampleId : SB-22-4-6-20230721MS



Tgt Ion:149 Resp: 1084916

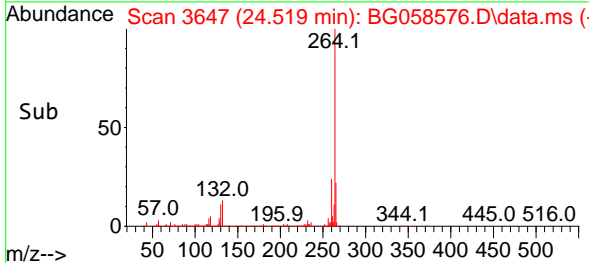
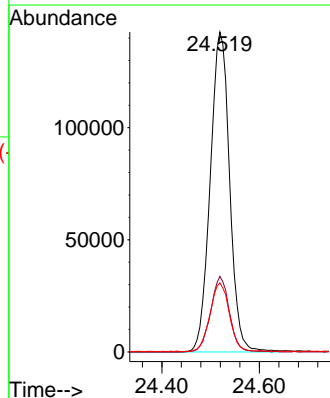
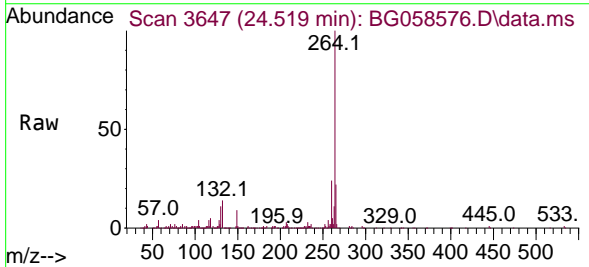
Ion	Ratio	Lower	Upper
149	100		
167	1.7	1.3	1.9
43	10.2	8.2	12.2

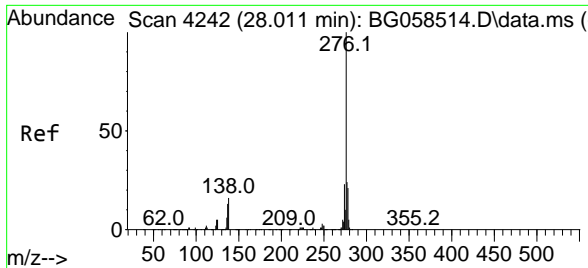


#86
 Perylene-d12
 Concen: 20.000 ng
 RT: 24.519 min Scan# 3647
 Delta R.T. 0.004 min
 Lab File: BG058576.D
 Acq: 2 Aug 2023 13:22

Tgt Ion:264 Resp: 394180

Ion	Ratio	Lower	Upper
264	100		
260	23.6	18.4	27.6
265	21.6	17.9	26.9



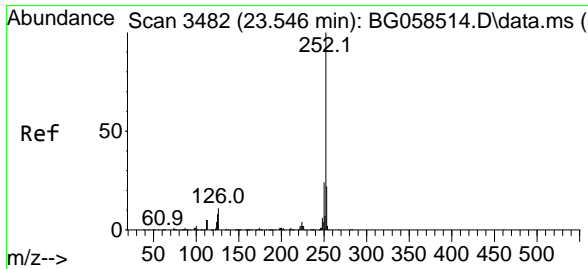
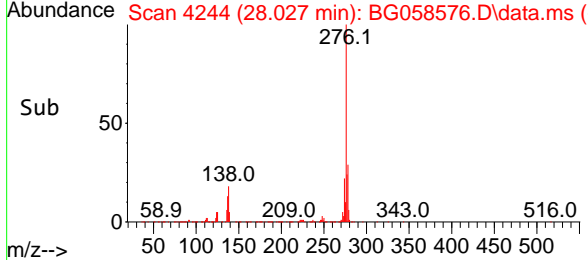
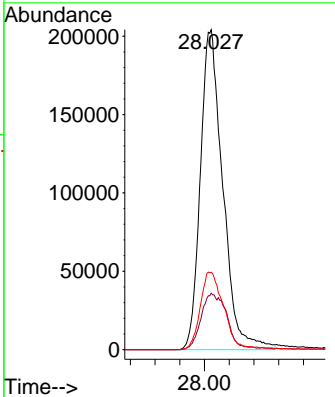
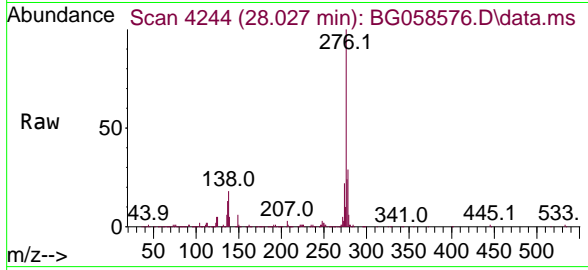


#87
 Indeno(1,2,3-cd)pyrene
 Concen: 48.989 ng
 RT: 28.027 min Scan# 4244
 Delta R.T. 0.016 min
 Lab File: BG058576.D
 Acq: 2 Aug 2023 13:22

Instrument : BNA_G
 ClientSampleId : SB-22-4-6-20230721MS

Tgt Ion: 276 Resp: 1284657

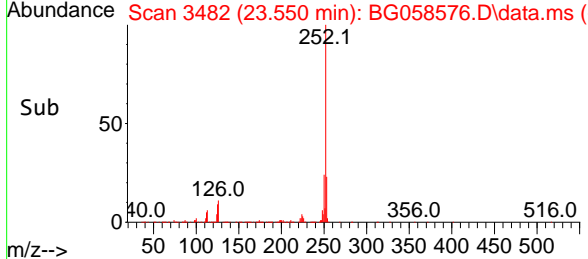
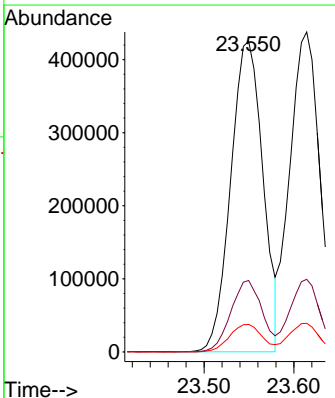
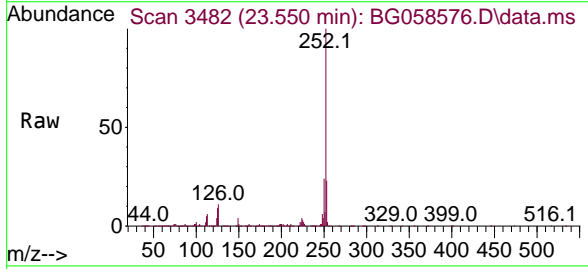
Ion	Ratio	Lower	Upper
276	100		
138	20.1	16.0	24.0
277	25.1	20.4	30.6

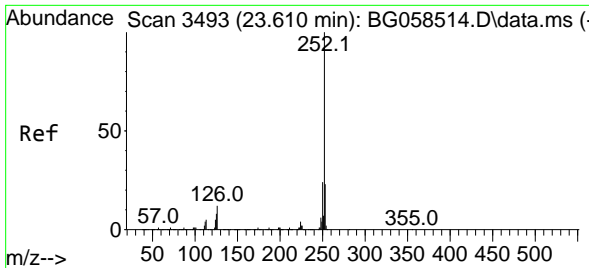


#88
 Benzo(b)fluoranthene
 Concen: 49.561 ng
 RT: 23.550 min Scan# 3482
 Delta R.T. 0.004 min
 Lab File: BG058576.D
 Acq: 2 Aug 2023 13:22

Tgt Ion: 252 Resp: 1059585

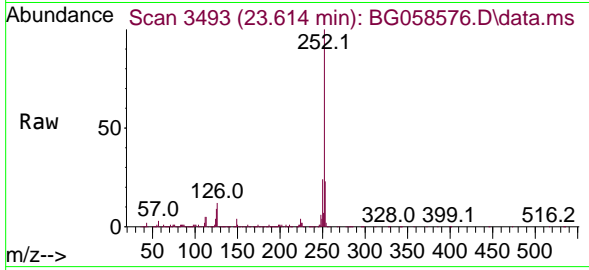
Ion	Ratio	Lower	Upper
252	100		
253	23.0	17.8	26.8
125	8.8	6.6	9.8



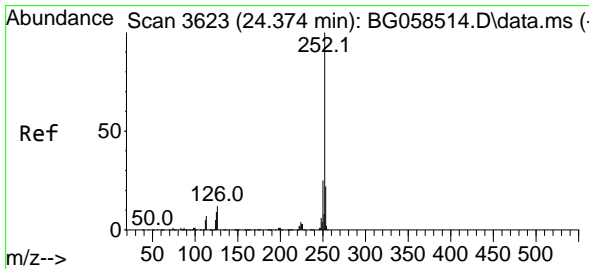
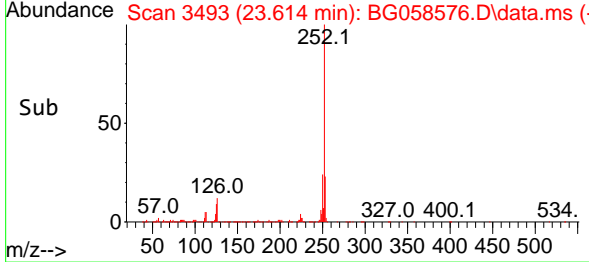
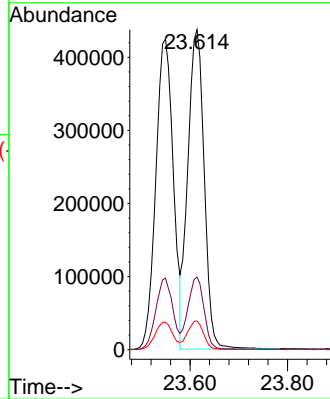


#89
 Benzo(k)fluoranthene
 Concen: 47.428 ng
 RT: 23.614 min Scan# 3493
 Delta R.T. 0.004 min
 Lab File: BG058576.D
 Acq: 2 Aug 2023 13:22

Instrument : BNA_G
 ClientSampleId : SB-22-4-6-20230721MS

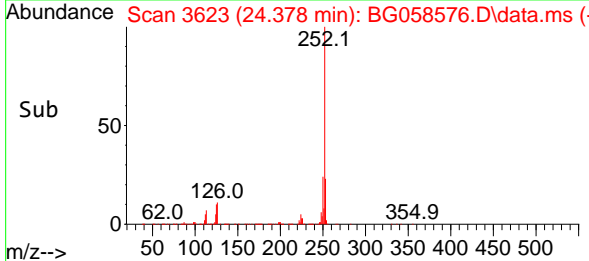
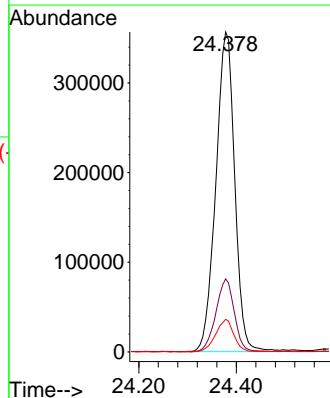
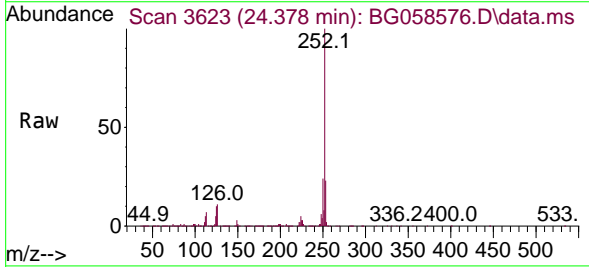


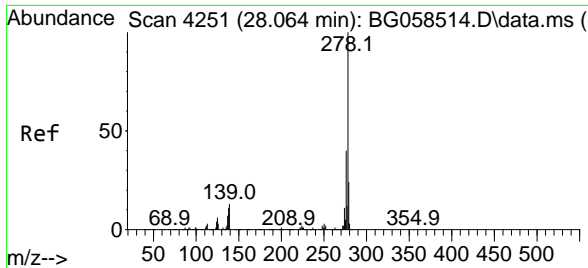
Tgt Ion:252 Resp: 1018647
 Ion Ratio Lower Upper
 252 100
 253 22.7 17.9 26.9
 125 8.9 6.6 10.0



#90
 Benzo(a)pyrene
 Concen: 45.606 ng
 RT: 24.378 min Scan# 3623
 Delta R.T. 0.004 min
 Lab File: BG058576.D
 Acq: 2 Aug 2023 13:22

Tgt Ion:252 Resp: 957534
 Ion Ratio Lower Upper
 252 100
 253 22.8 17.5 26.3
 125 10.2 7.4 11.2



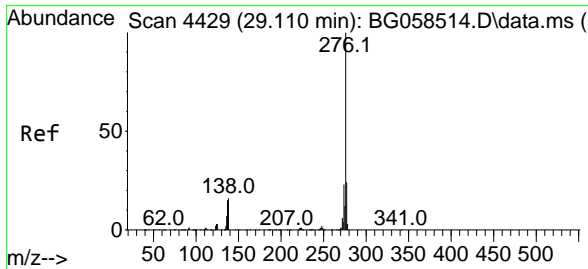
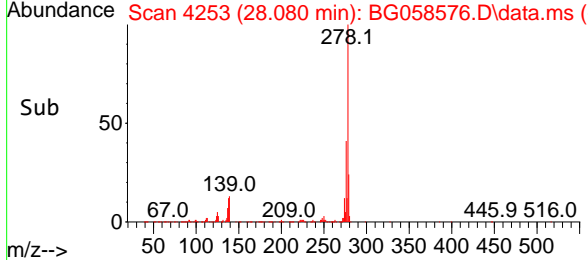
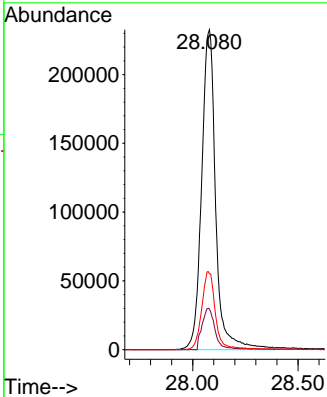
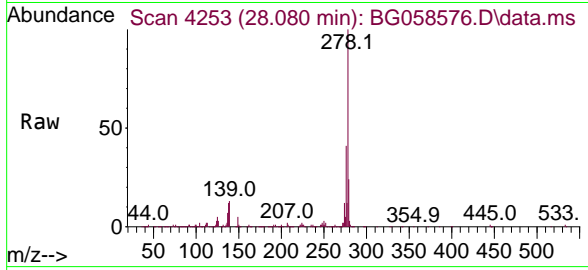


#91
 Dibenzo(a,h)anthracene
 Concen: 49.671 ng
 RT: 28.080 min Scan# 41
 Delta R.T. 0.016 min
 Lab File: BG058576.D
 Acq: 2 Aug 2023 13:22

Instrument : BNA_G
 ClientSampleId : SB-22-4-6-20230721MS

Tgt Ion:278 Resp: 1077027

Ion	Ratio	Lower	Upper
278	100		
139	12.7	10.4	15.6
279	23.7	19.0	28.6



#92
 Benzo(g,h,i)perylene
 Concen: 47.238 ng
 RT: 29.120 min Scan# 4430
 Delta R.T. 0.010 min
 Lab File: BG058576.D
 Acq: 2 Aug 2023 13:22

Tgt Ion:276 Resp: 1027087

Ion	Ratio	Lower	Upper
276	100		
277	23.7	18.9	28.3
138	17.1	13.0	19.4

