

Data Path : Z:\svoasrv\HPCHEM1\BNA_G\Data\BG080323\
 Data File : BG058594.D
 Acq On : 3 Aug 2023 15:40
 Operator : MA/JU
 Sample : 03854-04
 Misc :
 ALS Vial : 11 Sample Multiplier: 1

Instrument :
 BNA_G
 ClientSampleId :
 BERGENFIELD-CONCRETE

Quant Time: Aug 03 16:16:30 2023
 Quant Method : Z:\svoasrv\HPCHEM1\BNA_G\Methods\8270-BG072823.M
 Quant Title : ASP BNA STANDARDS FOR 5 POINT CALIBRATION
 QLast Update : Fri Jul 28 22:29:07 2023
 Response via : Initial Calibration

Compound	R.T.	QIon	Response	Conc	Units	Dev(Min)
Internal Standards						
1) 1,4-Dichlorobenzene-d4	7.813	152	47621	20.000	ng	0.00
21) Naphthalene-d8	10.616	136	203041	20.000	ng	0.00
39) Acenaphthene-d10	14.458	164	141212	20.000	ng	0.00
64) Phenanthrene-d10	17.202	188	320979	20.000	ng	0.00
76) Chrysene-d12	21.444	240	277897	20.000	ng	0.00
86) Perylene-d12	24.511	264	347681	20.000	ng	0.00
System Monitoring Compounds						
5) 2-Fluorophenol	5.387	112	46389	14.889	ng	0.00
7) Phenol-d6	6.985	99	265025	61.131	ng	0.00
23) Nitrobenzene-d5	8.977	82	267878	64.812	ng	0.00
42) 2,4,6-Tribromophenol	15.974	330	460	0.199	ng	0.02
45) 2-Fluorobiphenyl	13.078	172	627188	66.559	ng	0.00
79) Terphenyl-d14	19.823	244	1037076	70.179	ng	0.00

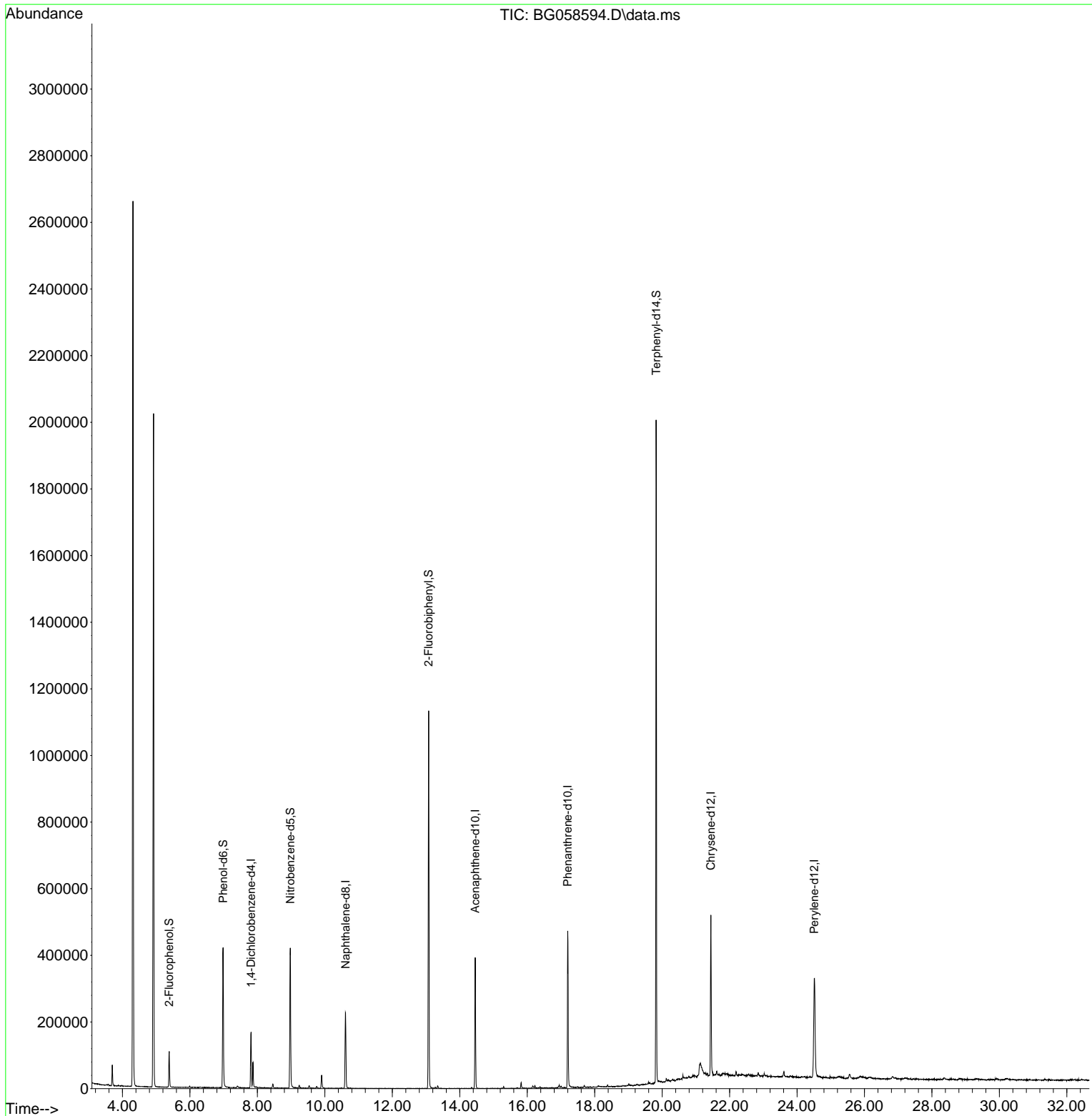
Target Compounds Qvalue

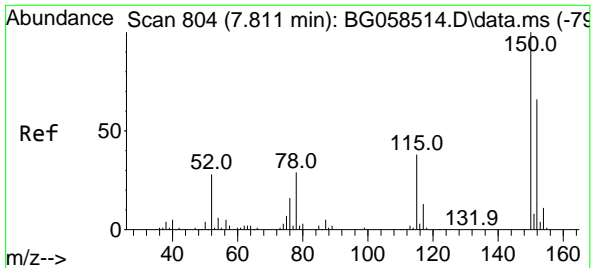
(#) = qualifier out of range (m) = manual integration (+) = signals summed

Data Path : Z:\svoasrv\HPCHEM1\BNA_G\Data\BG080323\
 Data File : BG058594.D
 Acq On : 3 Aug 2023 15:40
 Operator : MA/JU
 Sample : 03854-04
 Misc :
 ALS Vial : 11 Sample Multiplier: 1

Instrument :
 BNA_G
ClientSampleId :
 BERGENFIELD-CONCRETE

Quant Time: Aug 03 16:16:30 2023
 Quant Method : Z:\svoasrv\HPCHEM1\BNA_G\Methods\8270-BG072823.M
 Quant Title : ASP BNA STANDARDS FOR 5 POINT CALIBRATION
 QLast Update : Fri Jul 28 22:29:07 2023
 Response via : Initial Calibration

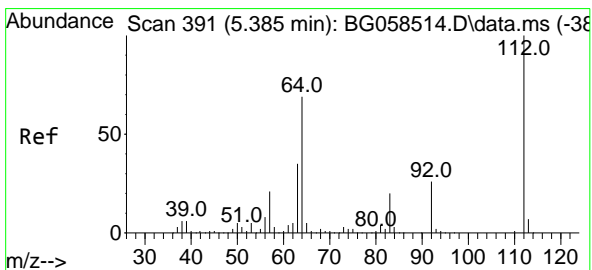
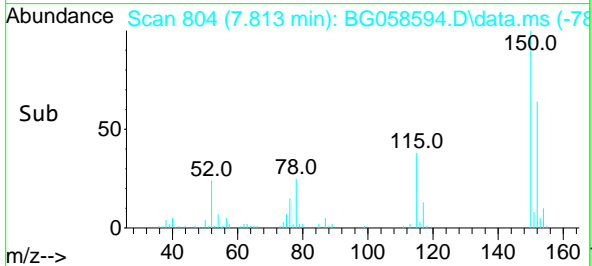
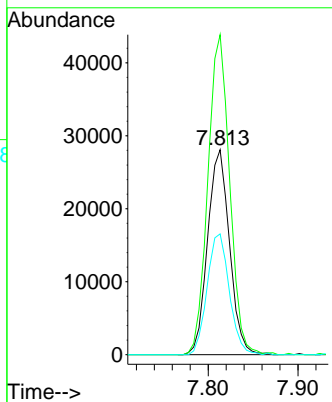
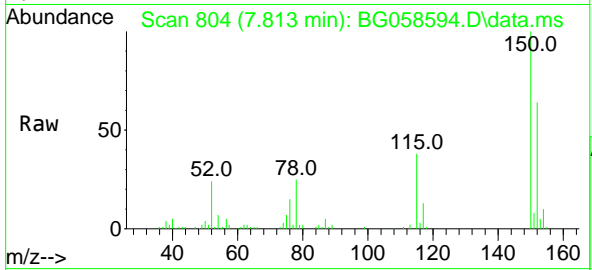




#1
 1,4-Dichlorobenzene-d4
 Concen: 20.000 ng
 RT: 7.813 min Scan# 804
 Delta R.T. 0.002 min
 Lab File: BG058594.D
 Acq: 3 Aug 2023 15:40

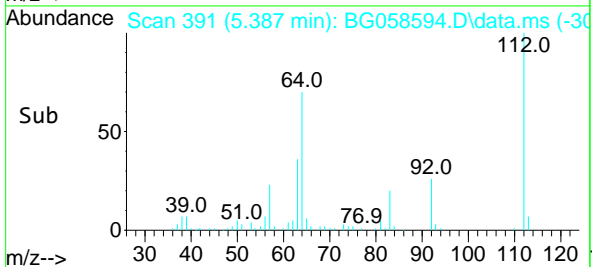
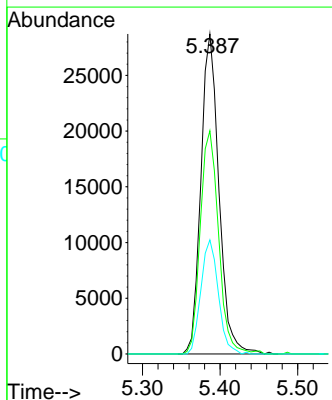
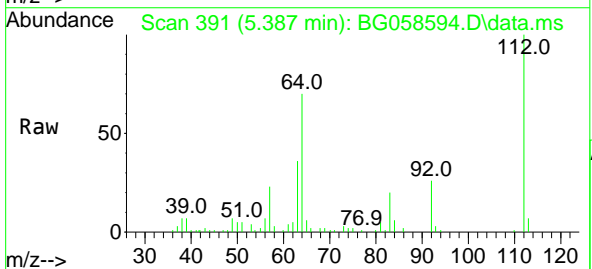
Instrument : BNA_G
 ClientSampleId : BERGENFIELD-CONCRETE

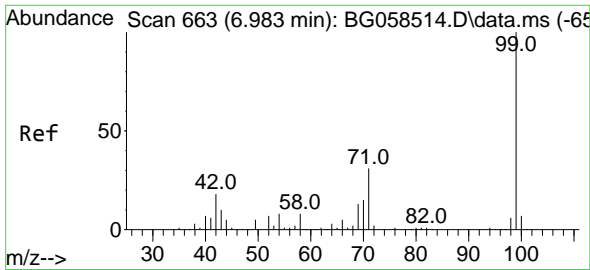
Tgt Ion:152 Resp: 47621
 Ion Ratio Lower Upper
 152 100
 150 156.1 120.5 180.7
 115 59.0 45.9 68.9



#5
 2-Fluorophenol
 Concen: 14.889 ng
 RT: 5.387 min Scan# 391
 Delta R.T. 0.002 min
 Lab File: BG058594.D
 Acq: 3 Aug 2023 15:40

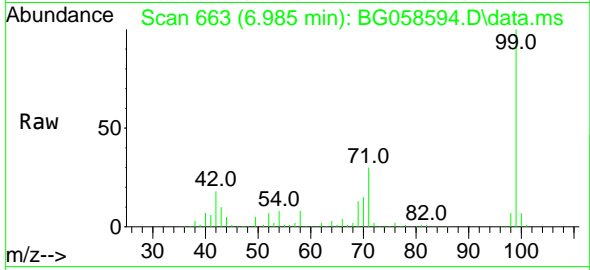
Tgt Ion:112 Resp: 46389
 Ion Ratio Lower Upper
 112 100
 64 69.7 55.3 82.9
 63 35.6 28.3 42.5



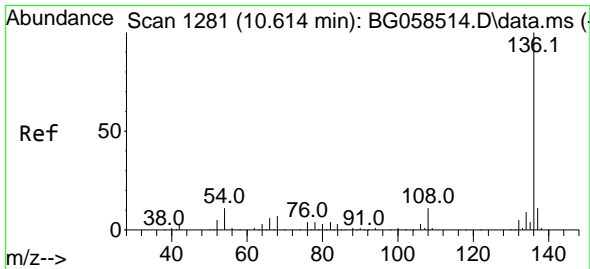
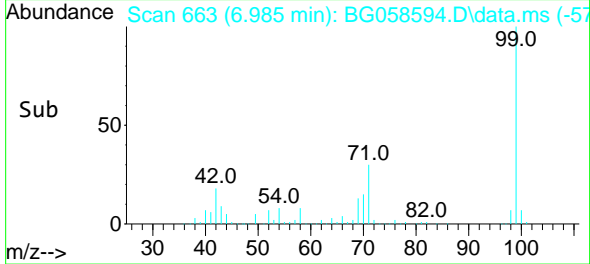
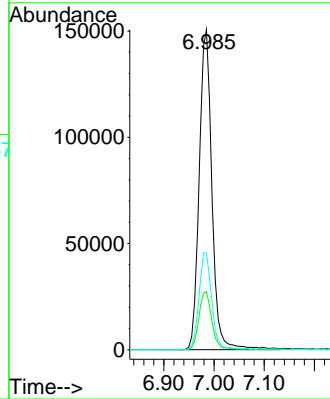


#7
 Phenol-d6
 Concen: 61.131 ng
 RT: 6.985 min Scan# 60
 Delta R.T. 0.002 min
 Lab File: BG058594.D
 Acq: 3 Aug 2023 15:40

Instrument : BNA_G
 ClientSampleId : BERGENFIELD-CONCRETE

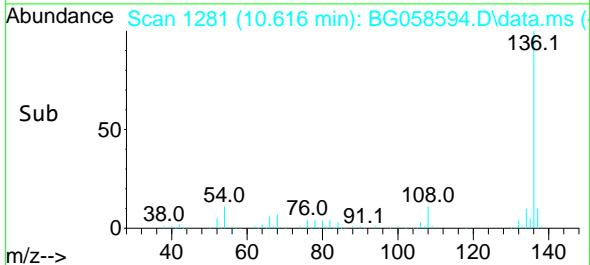
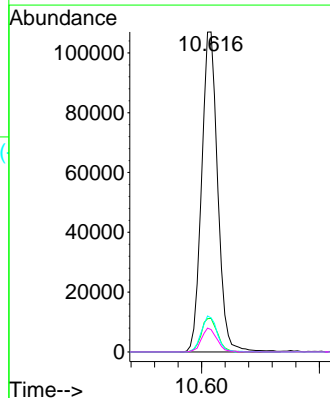
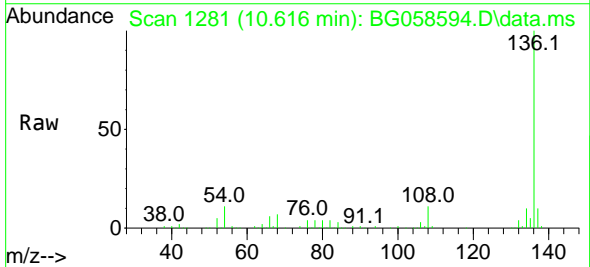


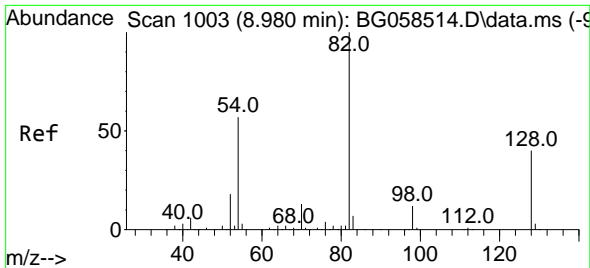
Tgt Ion: 99 Resp: 265025
 Ion Ratio Lower Upper
 99 100
 42 18.1 14.6 21.8
 71 30.2 25.0 37.4



#21
 Naphthalene-d8
 Concen: 20.000 ng
 RT: 10.616 min Scan# 1281
 Delta R.T. 0.002 min
 Lab File: BG058594.D
 Acq: 3 Aug 2023 15:40

Tgt Ion:136 Resp: 203041
 Ion Ratio Lower Upper
 136 100
 137 10.5 8.6 13.0
 54 10.7 8.9 13.3
 68 7.0 5.6 8.4

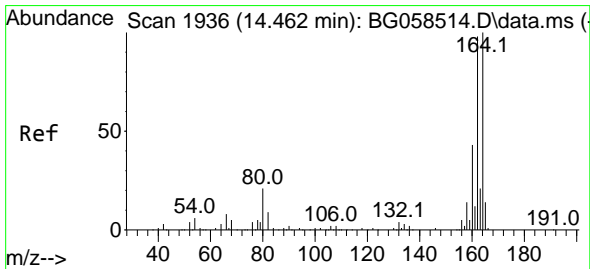
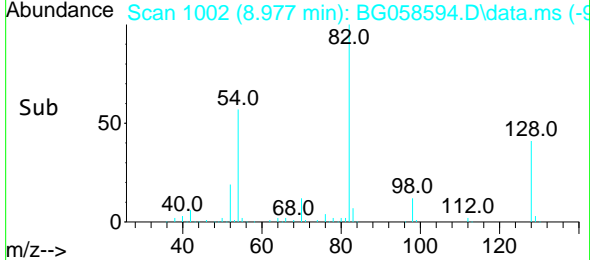
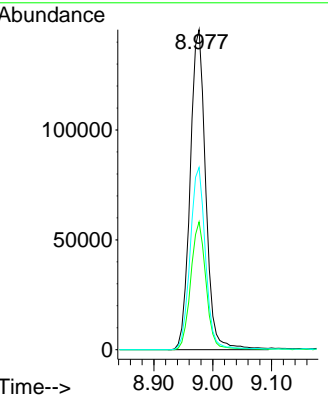
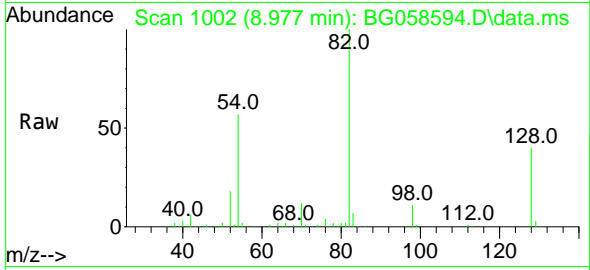




#23
 Nitrobenzene-d5
 Concen: 64.812 ng
 RT: 8.977 min Scan# 10
 Delta R.T. -0.004 min
 Lab File: BG058594.D
 Acq: 3 Aug 2023 15:40

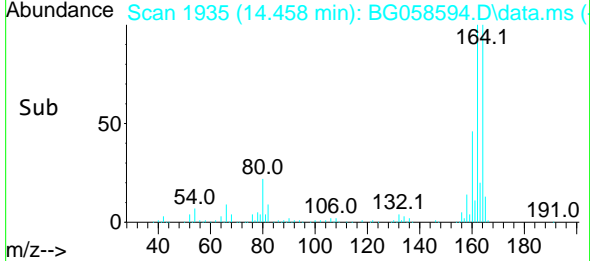
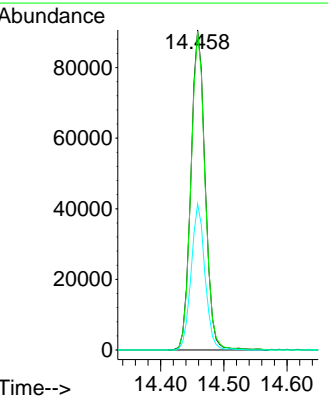
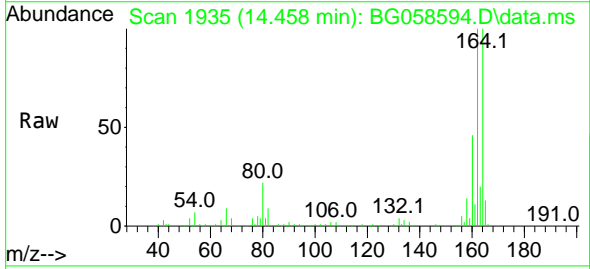
Instrument :
 BNA_G
 ClientSampleId :
 BERGENFIELD-CONCRETE

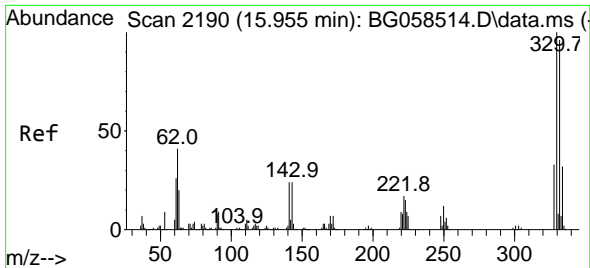
Tgt Ion: 82 Resp: 267878
 Ion Ratio Lower Upper
 82 100
 128 40.0 32.2 48.2
 54 56.9 46.0 69.0



#39
 Acenaphthene-d10
 Concen: 20.000 ng
 RT: 14.458 min Scan# 1935
 Delta R.T. -0.004 min
 Lab File: BG058594.D
 Acq: 3 Aug 2023 15:40

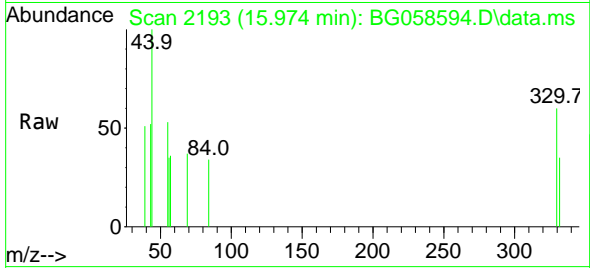
Tgt Ion:164 Resp: 141212
 Ion Ratio Lower Upper
 164 100
 162 99.5 78.3 117.5
 160 45.6 34.1 51.1



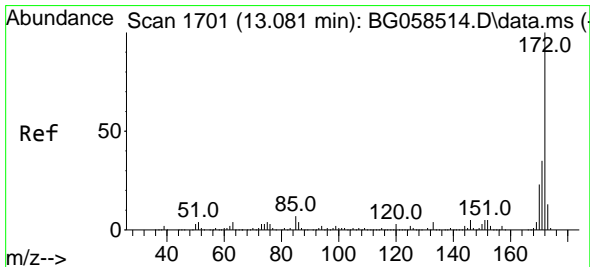
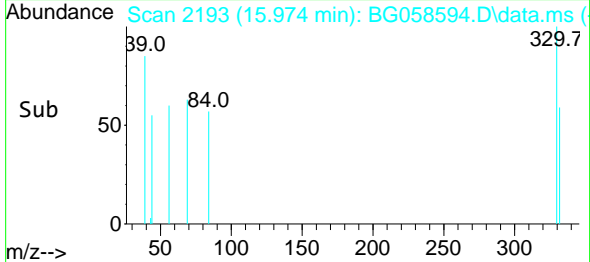
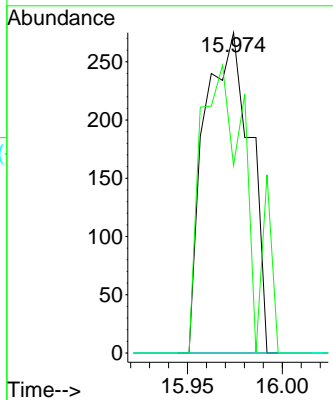


#42
 2,4,6-Tribromophenol
 Concen: 0.199 ng
 RT: 15.974 min Scan# 21
 Delta R.T. 0.020 min
 Lab File: BG058594.D
 Acq: 3 Aug 2023 15:40

Instrument :
 BNA_G
 ClientSampleId :
 BERGENFIELD-CONCRETE

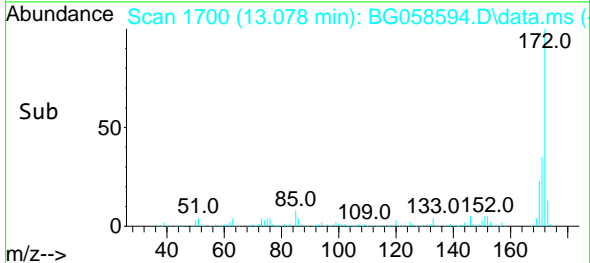
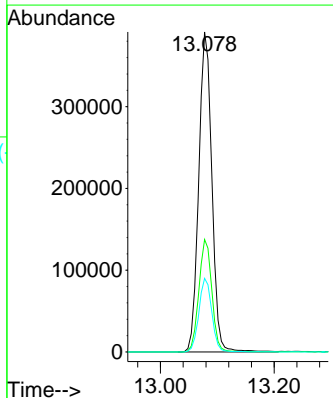
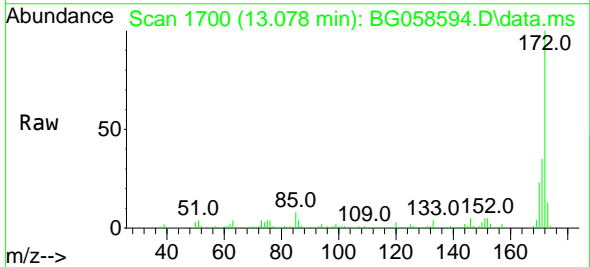


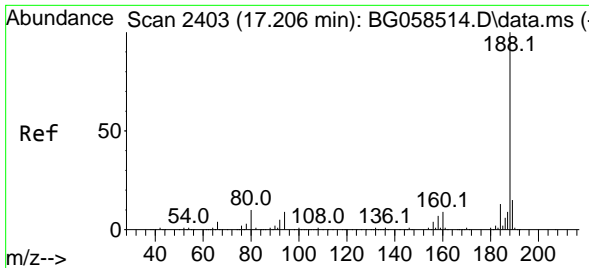
Tgt Ion:330 Resp: 460
 Ion Ratio Lower Upper
 330 100
 332 92.4 77.5 116.3
 141 0.0 20.7 31.1#



#45
 2-Fluorobiphenyl
 Concen: 66.559 ng
 RT: 13.078 min Scan# 1700
 Delta R.T. -0.004 min
 Lab File: BG058594.D
 Acq: 3 Aug 2023 15:40

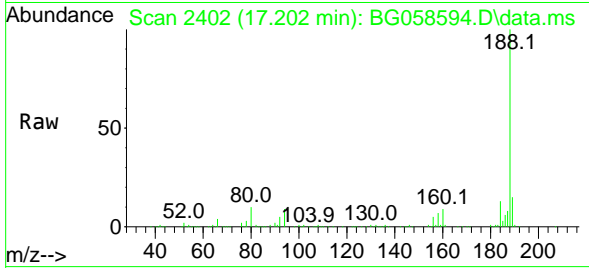
Tgt Ion:172 Resp: 627188
 Ion Ratio Lower Upper
 172 100
 171 35.1 28.0 42.0
 170 23.0 18.4 27.6



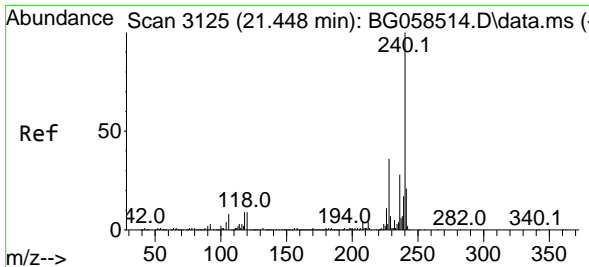
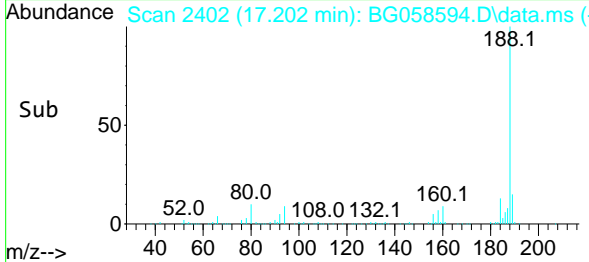
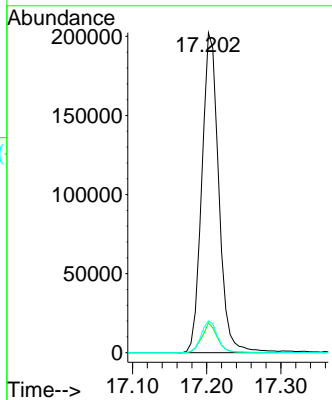


#64
 Phenanthrene-d10
 Concen: 20.000 ng
 RT: 17.202 min Scan# 24
 Delta R.T. -0.004 min
 Lab File: BG058594.D
 Acq: 3 Aug 2023 15:40

Instrument :
 BNA_G
 ClientSampleId :
 BERGENFIELD-CONCRETE

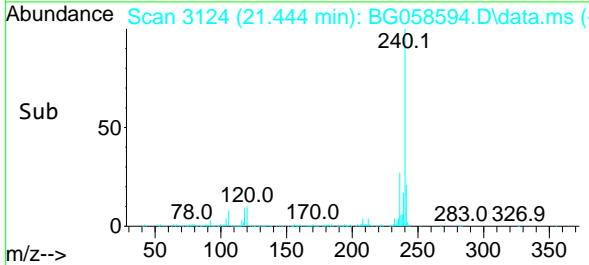
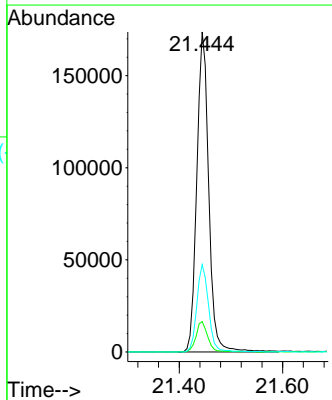
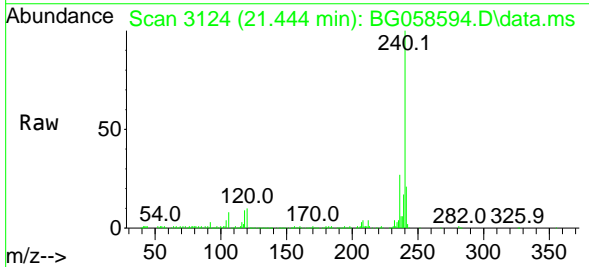


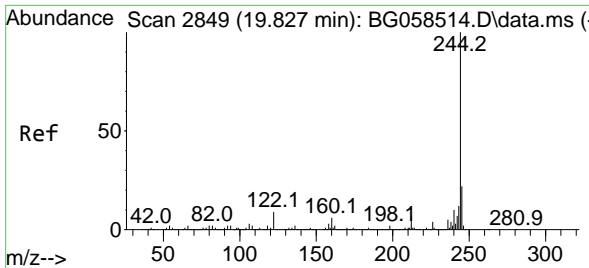
Tgt Ion:188 Resp: 320979
 Ion Ratio Lower Upper
 188 100
 94 9.3 7.0 10.6
 80 10.0 8.1 12.1



#76
 Chrysene-d12
 Concen: 20.000 ng
 RT: 21.444 min Scan# 3124
 Delta R.T. -0.004 min
 Lab File: BG058594.D
 Acq: 3 Aug 2023 15:40

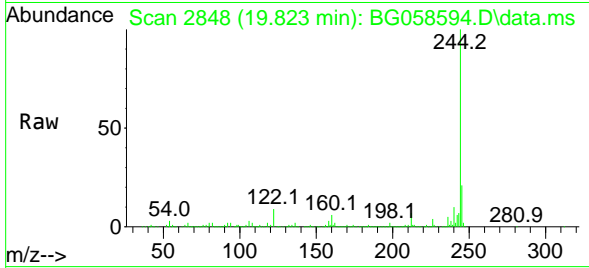
Tgt Ion:240 Resp: 277897
 Ion Ratio Lower Upper
 240 100
 120 9.5 7.4 11.0
 236 27.3 22.2 33.4



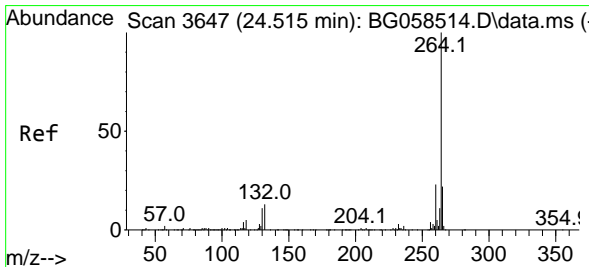
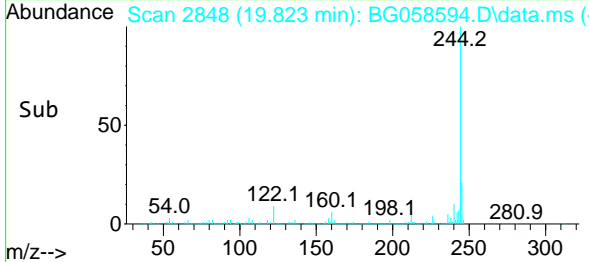
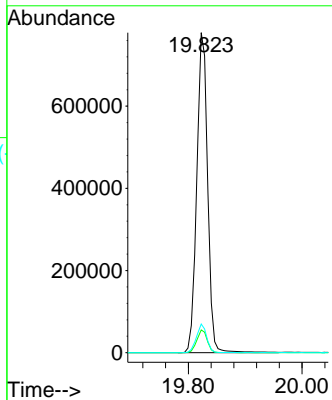


#79
 Terphenyl-d14
 Concen: 70.179 ng
 RT: 19.823 min Scan# 21
 Delta R.T. -0.004 min
 Lab File: BG058594.D
 Acq: 3 Aug 2023 15:40

Instrument :
 BNA_G
 ClientSampleId :
 BERGENFIELD-CONCRETE



Tgt Ion:244 Resp: 1037076
 Ion Ratio Lower Upper
 244 100
 212 7.1 5.9 8.9
 122 9.0 6.8 10.2



#86
 Perylene-d12
 Concen: 20.000 ng
 RT: 24.511 min Scan# 3646
 Delta R.T. -0.004 min
 Lab File: BG058594.D
 Acq: 3 Aug 2023 15:40

Tgt Ion:264 Resp: 347681
 Ion Ratio Lower Upper
 264 100
 260 21.6 18.4 27.6
 265 21.5 17.9 26.9

