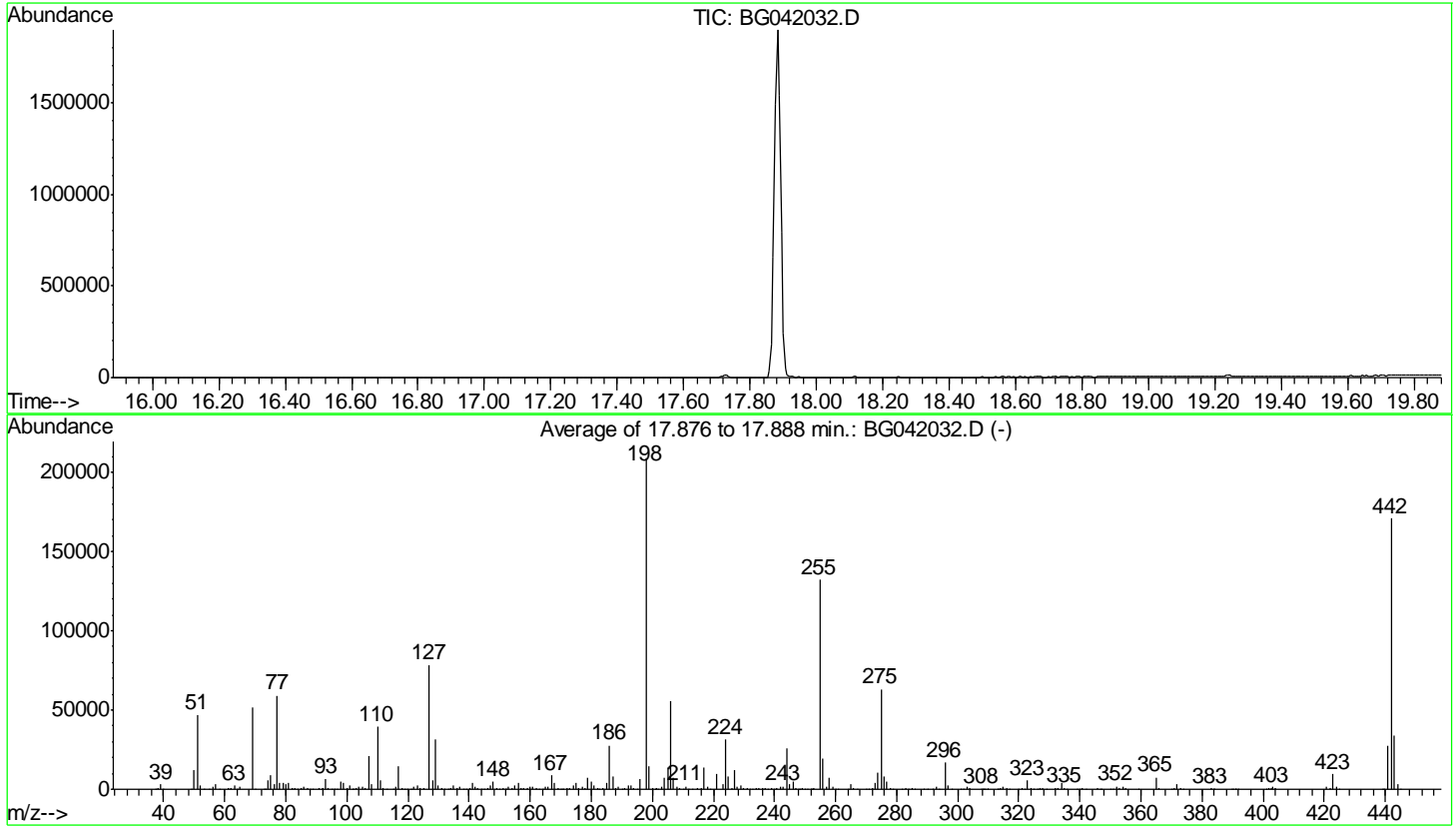


Data Path : Z:\svoasrv\HPCHEM1\BNA\_G\Data\BG080719\  
 Data File : BG042032.D  
 Acq On : 7 Aug 2019 15:38  
 Operator : HP/JU  
 Sample : DFTPP05  
 Misc :  
 ALS Vial : 1 Sample Multiplier: 1

Instrument :  
 BNA\_G  
 ClientSampleId :  
 DFTPP05

Integration File: LSCINT.P

Method : Z:\SVOASRV\HPCHEM1\BNA\_G\METHODS\SOM-EPA-BG080319MA.M  
 Title : SVOA CALIBRATION  
 Last Update : Thu Aug 08 15:44:01 2019



AutoFind: Scans 2517, 2518, 2519; Background Corrected with Scan 2511

Target Mass	Rel. to Mass	Lower Limit%	Upper Limit%	Rel. Abn%	Raw Abn	Result Pass/Fail
51	198	10	80	22.5	47050	PASS
68	69	0.00	2	0.0	0	PASS
69	198	0.00	100	24.8	51893	PASS
70	69	0.00	2	0.5	249	PASS
127	198	10	80	37.6	78626	PASS
197	198	0.00	2	0.0	0	PASS
198	198	100	100	100.0	208917	PASS
199	198	5	9	7.0	14670	PASS
275	198	10	60	30.2	63162	PASS
365	198	1	100	3.5	7393	PASS
441	198	0.01	100	13.0	27120	PASS
442	198	50	100	81.7	170648	PASS
443	442	15	24	19.9	33992	PASS

m/z	Abundance
40.00	212.0
41.10	155.0
44.00	730.0
207.00	389.0
281.00	174.0

**Instrument :**  
BNA\_G  
**ClientSampleId :**  
DFTPP05

m/z	Abundance
37.10	251.0
38.00	528.0
39.10	3385.0
40.00	367.0
41.00	240.0
44.00	726.0
50.10	12274.0
51.10	48376.0
52.10	3001.0
53.00	171.0
55.00	302.0
56.00	1562.0
57.00	3815.0
58.00	273.0
61.00	807.0
62.10	583.0
63.00	2147.0
64.10	200.0
65.10	1368.0
69.00	53816.0
70.00	270.0
73.00	442.0
74.00	5715.0
75.00	9251.0
76.20	3212.0
77.10	60744.0
78.10	4195.0
79.00	4065.0
80.00	3054.0
81.00	4305.0
82.00	1141.0
83.00	1052.0
85.10	886.0
85.90	1466.0
87.00	524.0
88.20	235.0
88.90	164.0
91.00	1040.0
91.90	1135.0
93.00	6653.0
93.90	765.0
96.10	236.0
96.90	261.0
98.00	5320.0
99.00	3937.0
100.00	422.0
101.00	2179.0
101.90	181.0
102.20	177.0
103.00	1046.0
104.00	1847.0
105.00	1986.0
106.00	656.0
107.00	20168.0
108.00	3266.0
110.00	39288.0
111.00	5871.0
112.00	797.0
115.90	1249.0
117.00	15037.0
118.00	1161.0
120.00	296.0
121.90	1339.0
123.00	2544.0
124.00	920.0
125.00	1053.0
127.00	78840.0
128.00	6368.0
129.00	31072.0
130.00	2622.0
130.90	401.0
132.00	300.0
133.00	197.0
133.90	925.0
135.00	2586.0
135.90	1198.0
136.90	1298.0
138.00	295.0
140.10	654.0
141.00	4446.0
142.00	1295.0
142.90	843.0
144.00	222.0
145.10	246.0
146.00	603.0
147.00	2185.0
148.00	4630.0
149.00	1108.0
150.00	319.0
151.00	775.0
151.80	412.0

Instrument :  
BNA\_G  
ClientSampleId :  
DFTPP05

153.00	1461.0
153.90	1142.0
155.00	2746.0
156.00	3694.0
157.10	888.0
157.90	878.0
159.00	655.0
160.00	1436.0
161.00	1674.0
161.90	561.0
163.00	198.0
164.10	317.0
165.00	1864.0
166.00	1129.0
167.00	8241.0
168.00	3540.0
168.90	818.0
170.10	304.0
170.50	244.0
171.00	363.0
171.90	757.0
173.00	839.0
174.00	2059.0
175.00	3056.0
176.00	983.0
177.00	1591.0
178.10	802.0
178.90	6700.0
180.00	4891.0
181.00	1917.0
182.00	573.0
182.70	286.0
183.90	567.0
185.00	3436.0
186.00	25752.0
187.00	6948.0
188.00	578.0
189.00	2163.0
190.00	219.0
190.90	923.0
192.00	2163.0
193.00	2732.0
194.00	484.0
195.00	399.0
196.00	5644.0
197.90	193344.0
198.90	13910.0
200.00	1094.0
201.40	1105.0
202.90	1468.0
204.00	6675.0
205.00	12086.0
206.00	52168.0
207.00	8081.0
208.00	1645.0
208.90	525.0
211.00	1806.0
211.70	584.0
214.90	629.0
216.00	1083.0
216.90	12889.0
218.00	1540.0
219.10	309.0
221.00	7793.0
223.00	3369.0
224.00	28632.0
225.00	7029.0
226.00	1009.0
227.00	10868.0
227.90	1948.0
228.90	2383.0
229.90	427.0
231.00	1030.0
231.90	178.0
232.90	350.0
233.90	783.0
234.90	920.0
235.90	648.0
237.00	1057.0
238.00	187.0
238.90	543.0
239.90	466.0
240.90	777.0
242.00	1631.0
243.00	1676.0
244.00	22744.0
245.00	3032.0
245.90	4307.0
246.90	799.0
248.10	209.0
248.90	1113.0
249.90	224.0
251.80	255.0
252.40	214.0
253.00	576.0

Instrument :  
BNA\_G  
ClientSampleId :  
DFTPP05

254.90	116848.0
255.90	17152.0
257.00	1421.0
257.90	6026.0
259.00	986.0
259.90	170.0
261.00	209.0
264.00	272.0
264.90	2402.0
265.90	438.0
271.00	218.0
271.90	518.0
272.90	4103.0
273.90	8964.0
274.90	56584.0
276.00	6916.0
276.90	4026.0
277.90	711.0
278.90	166.0
281.90	183.0
282.90	452.0
284.00	348.0
284.90	774.0
286.00	161.0
289.00	196.0
290.00	237.0
292.00	191.0
292.90	1183.0
294.00	289.0
295.90	14408.0
296.90	1810.0
297.90	182.0
301.00	234.0
301.90	221.0
303.00	1569.0
303.90	483.0
308.70	236.0
309.70	156.0
312.90	278.0
313.90	580.0
314.90	1261.0
315.90	877.0
316.80	182.0
320.90	464.0
321.90	278.0
322.90	4645.0
323.90	1046.0
325.90	261.0
326.90	786.0
328.00	318.0
331.90	353.0
332.90	468.0
333.90	3234.0
334.90	1022.0
340.00	185.0
340.90	525.0
342.00	305.0
345.80	857.0
346.60	238.0
351.90	1449.0
352.90	660.0
354.00	1413.0
355.00	462.0
359.00	178.0
364.90	5737.0
365.90	908.0
370.90	437.0
371.90	1973.0
372.90	688.0
382.90	536.0
383.70	160.0
389.80	358.0
390.80	159.0
391.90	179.0
401.80	720.0
402.80	1513.0
403.80	413.0
420.90	910.0
421.90	905.0
422.90	7332.0
423.90	1466.0
439.20	210.0
439.60	171.0
440.90	18728.0
441.90	123144.0
442.90	25064.0
443.90	2629.0

Instrument :  
BNA\_G  
ClientSampleId :  
DFTPP05

m/z	Abundance
38.10	808.0
39.10	3596.0
40.10	327.0
41.10	182.0
44.00	563.0
49.10	672.0
50.10	13902.0
51.10	53752.0
52.10	3073.0
53.00	209.0
55.00	282.0
56.00	1650.0
57.00	3868.0
58.10	196.0
61.10	653.0
62.00	832.0
63.00	2646.0
64.10	330.0
65.10	1339.0
69.00	59880.0
69.90	247.0
73.00	478.0
74.10	6297.0
75.00	10233.0
76.10	3345.0
77.10	67304.0
78.10	4771.0
79.00	4482.0
80.00	3629.0
81.00	5314.0
82.00	1191.0
83.00	1238.0
83.90	206.0
85.00	1016.0
86.00	1479.0
87.00	676.0
88.10	207.0
91.00	1440.0
92.10	1336.0
93.00	7532.0
94.00	572.0
95.10	226.0
96.00	627.0
98.00	5801.0
99.00	4213.0
99.90	587.0
101.00	3162.0
102.10	283.0
103.00	1054.0
104.00	2270.0
105.00	1865.0
106.00	794.0
107.00	23984.0
108.00	3727.0
110.00	44528.0
111.00	6668.0
112.00	679.0
113.00	313.0
116.00	1847.0
117.00	17152.0
117.90	1342.0
119.00	178.0
120.00	329.0
121.00	177.0
122.00	1335.0
123.00	3156.0
124.00	1080.0
125.00	1288.0
127.00	89184.0
128.00	6614.0
129.00	36184.0
130.00	3231.0
131.00	633.0
132.10	322.0
134.00	938.0
135.00	2518.0
136.00	1407.0
137.00	1409.0
138.00	243.0
139.10	191.0
140.00	565.0
141.00	4809.0
142.00	1586.0
143.00	1323.0
144.00	298.0
145.00	374.0
146.00	828.0
147.00	2723.0
147.90	5094.0
149.00	1110.0
150.10	415.0

Instrument :  
BNA\_G  
ClientSampleId :  
DFTPP05

151.10	852.0
152.00	361.0
152.90	1431.0
153.90	1324.0
155.00	2860.0
156.00	4841.0
156.90	891.0
157.90	997.0
159.00	651.0
160.00	1819.0
161.00	2359.0
161.90	814.0
163.00	288.0
163.90	348.0
165.00	2087.0
165.90	1487.0
167.00	9969.0
168.00	4089.0
169.00	955.0
170.00	366.0
170.90	561.0
172.00	982.0
173.00	1203.0
174.00	2661.0
175.00	4676.0
176.00	1367.0
177.00	2112.0
178.90	8297.0
180.00	5229.0
181.00	2898.0
182.00	496.0
184.00	819.0
185.00	4591.0
186.00	32008.0
187.00	8993.0
188.00	1004.0
189.00	2228.0
190.00	546.0
191.00	994.0
191.90	3132.0
193.00	2934.0
194.00	792.0
196.00	7186.0
197.90	241408.0
198.90	17256.0
199.90	1432.0
201.40	1440.0
202.90	1814.0
204.00	8723.0
205.00	15870.0
206.00	63808.0
207.00	8570.0
208.00	2325.0
208.90	801.0
210.00	1125.0
210.90	2170.0
212.90	183.0
214.90	738.0
216.00	1424.0
216.90	16880.0
218.00	1883.0
219.00	278.0
221.00	11864.0
223.00	4132.0
224.00	35128.0
225.00	9460.0
227.00	13719.0
227.90	2373.0
229.00	3297.0
229.90	561.0
230.90	1248.0
232.00	270.0
233.00	295.0
233.90	1205.0
234.90	1235.0
236.00	709.0
236.90	971.0
238.90	523.0
239.90	464.0
240.90	732.0
242.00	1980.0
243.00	2168.0
244.00	30592.0
245.00	3796.0
246.00	5945.0
246.90	1288.0
248.20	235.0
249.00	1046.0
249.80	258.0
250.90	249.0
252.10	477.0
253.00	743.0
254.90	153600.0
255.90	22976.0
257.00	1883.0

Instrument :  
BNA\_G  
ClientSampleId :  
DFTPP05

258.00	8668.0
258.90	1614.0
260.00	154.0
260.90	357.0
263.90	166.0
264.90	3251.0
265.90	533.0
267.00	169.0
270.00	220.0
270.90	336.0
272.00	579.0
272.90	4916.0
274.00	13372.0
274.90	72320.0
275.90	10205.0
276.90	5234.0
277.90	1038.0
278.90	285.0
283.00	592.0
283.90	348.0
285.00	996.0
286.00	213.0
288.90	491.0
289.90	240.0
291.80	363.0
292.90	1410.0
293.90	334.0
295.90	19312.0
296.90	2759.0
300.80	313.0
301.90	495.0
303.00	2190.0
303.90	487.0
307.80	223.0
308.00	233.0
308.90	301.0
309.90	269.0
313.90	818.0
314.90	2001.0
315.90	1157.0
316.90	333.0
319.80	194.0
320.90	918.0
321.90	569.0
322.90	5804.0
324.00	1114.0
324.80	174.0
326.00	260.0
326.90	961.0
327.90	773.0
332.00	718.0
332.90	602.0
334.00	3928.0
334.90	1185.0
335.80	159.0
338.90	175.0
340.00	196.0
340.90	779.0
341.80	304.0
345.90	1033.0
346.90	207.0
349.80	193.0
351.90	1791.0
352.90	1567.0
353.90	2122.0
354.90	404.0
358.90	184.0
364.90	9281.0
365.90	1366.0
369.90	274.0
370.90	738.0
371.90	3285.0
372.90	813.0
383.00	1005.0
383.90	244.0
390.00	407.0
391.00	469.0
400.90	221.0
401.90	1688.0
403.00	1890.0
404.00	477.0
420.90	1661.0
421.90	1367.0
422.90	10541.0
423.90	2109.0
424.80	205.0
440.90	32368.0
441.90	196800.0
442.90	39384.0
443.90	3800.0

Instrument :  
BNA\_G  
ClientSampleId :  
DFTPP05



m/z	Abundance
37.10	177.0
38.20	478.0
39.10	2552.0
40.00	344.0
44.00	841.0
50.00	10007.0
51.10	39024.0
52.00	2117.0
55.10	347.0
56.00	1185.0
57.00	3202.0
58.00	292.0
61.00	410.0
62.00	582.0
63.10	1882.0
64.00	191.0
65.10	1124.0
69.00	41984.0
70.00	231.0
73.20	306.0
74.00	4695.0
75.00	6920.0
76.10	2601.0
77.10	49488.0
78.10	3480.0
79.00	3526.0
80.00	2544.0
81.00	3772.0
82.00	935.0
83.00	976.0
85.00	720.0
86.00	885.0
87.00	398.0
88.00	224.0
91.00	810.0
92.00	1099.0
93.00	5967.0
94.10	519.0
94.90	229.0
96.00	336.0
98.00	3929.0
99.00	3344.0
99.90	383.0
101.00	1974.0
102.90	639.0
104.00	1528.0
105.00	1302.0
107.00	17648.0
108.00	2947.0
110.00	33616.0
111.00	5021.0
111.90	471.0
113.00	186.0
115.00	174.0
116.00	1429.0
117.00	12383.0
118.00	857.0
119.90	369.0
122.00	1338.0
123.00	1963.0
124.00	868.0
125.00	824.0
127.00	67856.0
128.00	4878.0
129.00	26760.0
130.00	2453.0
130.90	426.0
132.00	198.0
132.90	192.0
134.00	1118.0
135.00	2632.0
136.00	976.0
137.00	1166.0
138.00	285.0
140.10	371.0
141.00	3651.0
142.00	1443.0
143.00	802.0
144.00	190.0
144.90	192.0
146.00	653.0
147.00	2239.0
148.00	4295.0
149.00	845.0
149.90	318.0
151.20	563.0
151.90	316.0
153.00	1150.0
154.00	1059.0
155.00	2368.0
156.00	3373.0

Instrument :  
BNA\_G  
ClientSampleId :  
DFTPP05

157.00	546.0
157.90	762.0
159.00	778.0
160.00	1365.0
160.90	1589.0
161.90	686.0
162.90	220.0
165.00	1596.0
166.00	1317.0
167.00	7341.0
168.00	3500.0
169.00	571.0
169.90	237.0
170.40	187.0
170.90	284.0
171.90	706.0
173.00	786.0
174.00	1798.0
175.00	3298.0
176.00	1113.0
176.90	1869.0
177.90	505.0
178.90	6431.0
180.00	4912.0
180.90	2152.0
181.90	434.0
184.00	530.0
185.00	3072.0
186.00	24528.0
187.00	7299.0
188.00	770.0
189.00	1206.0
189.90	196.0
191.00	791.0
191.90	2024.0
193.00	2626.0
194.00	578.0
196.00	5676.0
197.90	192000.0
198.90	12845.0
199.90	1135.0
201.00	586.0
201.60	806.0
203.00	1205.0
204.00	6924.0
205.00	12875.0
206.00	51928.0
207.00	6531.0
207.90	1872.0
209.00	644.0
211.00	1942.0
214.90	621.0
216.00	1083.0
216.90	12257.0
218.00	1778.0
219.00	217.0
220.90	10507.0
223.00	3200.0
224.00	29616.0
225.00	7101.0
226.00	932.0
227.00	11493.0
227.90	1440.0
229.00	2365.0
230.00	439.0
230.90	846.0
231.90	249.0
232.90	346.0
234.00	690.0
234.90	808.0
235.90	617.0
237.00	1010.0
237.90	239.0
238.90	499.0
240.00	357.0
240.90	657.0
242.00	1994.0
243.00	2134.0
244.00	24680.0
244.90	3431.0
245.90	4847.0
246.90	845.0
247.70	264.0
249.00	888.0
249.90	217.0
250.70	228.0
252.00	387.0
252.90	778.0
254.90	125720.0
256.00	18480.0
256.80	1329.0
258.00	6772.0
259.00	1198.0
260.00	218.0
260.90	248.0

Instrument :  
BNA\_G  
ClientSampleId :  
DFTPP05

263.90	269.0
264.90	3095.0
266.00	534.0
269.90	171.0
270.90	270.0
271.90	295.0
273.00	4146.0
273.90	10362.0
274.90	60584.0
275.90	7760.0
276.90	4662.0
277.90	666.0
279.00	279.0
281.10	177.0
282.80	449.0
283.90	440.0
285.00	986.0
285.90	241.0
288.90	292.0
289.90	253.0
291.90	168.0
292.90	1274.0
294.00	253.0
295.90	17016.0
296.90	2178.0
300.90	238.0
302.00	370.0
302.90	1913.0
304.00	459.0
308.00	380.0
310.00	237.0
313.10	233.0
313.90	623.0
314.90	1901.0
315.90	1110.0
316.70	159.0
317.00	157.0
320.90	602.0
321.90	287.0
322.90	5461.0
323.90	837.0
326.10	328.0
326.90	910.0
327.90	598.0
328.90	190.0
331.90	476.0
333.00	547.0
333.90	3863.0
334.90	797.0
338.90	171.0
340.90	702.0
341.90	203.0
345.90	1232.0
346.60	174.0
346.80	186.0
350.90	151.0
351.90	2026.0
352.90	1302.0
353.90	1552.0
354.90	544.0
359.00	236.0
364.90	7162.0
365.90	1170.0
369.80	183.0
370.90	581.0
371.90	3428.0
372.90	624.0
373.90	184.0
382.90	784.0
383.90	207.0
389.90	312.0
390.90	198.0
391.90	158.0
400.80	240.0
401.90	1183.0
402.90	1865.0
403.90	868.0
420.80	1293.0
421.90	1374.0
422.90	10112.0
423.90	1951.0
424.90	171.0
439.50	197.0
440.90	30264.0
441.90	192000.0
442.90	37528.0
443.90	3199.0
444.80	256.0

Instrument :  
BNA\_G  
ClientSampleId :  
DFTPP05