

Data Path : Z:\SVOASRV\HPCHEM1\BNA_G\DATA\BG080819\
 Data File : BG042079.D
 Acq On : 8 Aug 2019 22:38
 Operator : HP/JU
 Sample : K4116-03
 Misc :
 ALS Vial : 9 Sample Multiplier: 1

Instrument :
 BNA_G
 ClientSampleId :
 JLLD2

Quant Time: Aug 09 08:27:51 2019
 Quant Method : Z:\SVOASRV\HPCHEM1\BNA_G\METHODS\SOM-EPA-BG080319MA.M
 Quant Title : SVOA CALIBRATION
 QLast Update : Thu Aug 08 15:44:01 2019
 Response via : Initial Calibration

Internal Standards	R.T.	QIon	Response	Conc	Units	Dev(Min)
1) 1,4-Dichlorobenzene-d4	8.02	152	75757	20.00	ng/ul	0.00
18) Naphthalene-d8	10.85	136	317446	20.00	ng/ul	0.00
35) Acenaphthene-d10	14.69	164	224105	20.00	ng/ul	0.00
61) Phenanthrene-d10	17.44	188	485367	20.00	ng/ul	0.00
77) Chrysene-d12	21.72	240	475359	20.00	ng/ul	0.00
85) Perylene-d12	24.99	264	555579	20.00	ng/ul	0.00

System Monitoring Compounds

3) 1,4-Dioxane-d8	3.41	96	4244	2.45	ng/uL	0.00
5) Phenol-d5	7.18	99	96508	16.23	ng/ul	0.00
7) Bis-(2-Chloroethyl)ether-d	7.34	67	55305	16.63	ng/ul	0.00
9) 2-Chlorophenol-d4	7.55	132	92793	18.26	ng/ul	0.00
13) 4-Methylphenol-d8	8.73	113	71996	14.42	ng/ul	0.00
19) Nitrobenzene-d5	9.19	128	47558	19.90	ng/ul	0.00
22) 2-Nitrophenol-d4	9.92	143	58172	20.97	ng/ul	0.00
26) 2,4-Dichlorophenol-d3	10.47	165	106279	18.97	ng/ul	0.00
29) 4-Chloroaniline-d4	10.98	131	103973	16.73	ng/ul	0.00
43) Dimethylphthalate-d6	14.09	166	368472	21.20	ng/ul	0.00
46) Acenaphthylene-d8	14.37	160	417463	21.03	ng/ul	0.00
51) 4-Nitrophenol-d4	14.87	143	39600	13.57	ng/ul	0.00
57) Fluorene-d10	15.68	176	325018	21.02	ng/ul	0.00
62) 4,6-Dinitro-2-methylphenol	15.79	200	50011	16.06	ng/ul	0.00
70) Anthracene-d10	17.53	188	504090	21.65	ng/ul	0.00
78) Pyrene-d10	19.82	212	579833	21.86	ng/ul	0.00
89) Benzo(a)pyrene-d12	24.76	264	640034	22.05	ng/ul	0.00

Target Compounds

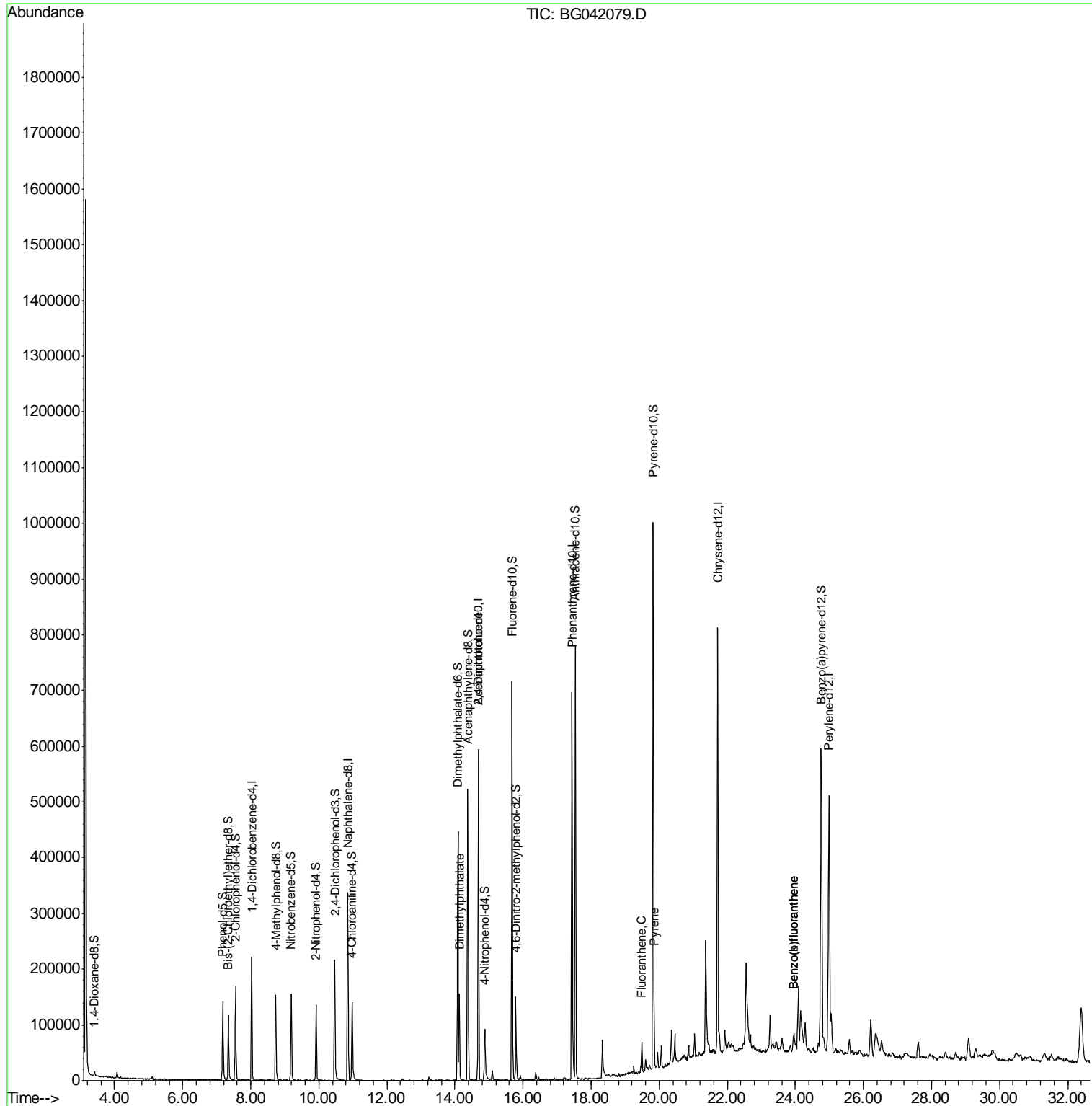
					Qvalue
44) Dimethylphthalate	14.13	163	121542	7.043	ng/ul 97
54) 2,4-Dinitrotoluene	14.69	165	30009	5.498	ng/ul# 45
76) Fluoranthene	19.49	202	38420	1.251	ng/ul# 96
79) Pyrene	19.85	202	33579	1.050	ng/ul# 95
87) Benzo(b)fluoranthene	23.95	252	37832	1.085	ng/ul 99
88) Benzo(k)fluoranthene	23.95	252	37832	1.129	ng/ul 99

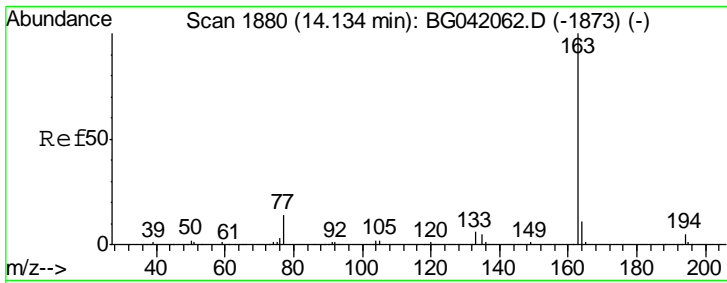
(#) = qualifier out of range (m) = manual integration (+) = signals summed

Data Path : Z:\SVOASRV\HPCHEM1\BNA_G\DATA\BG080819\
 Data File : BG042079.D
 Acq On : 8 Aug 2019 22:38
 Operator : HP/JU
 Sample : K4116-03
 Misc :
 ALS Vial : 9 Sample Multiplier: 1

Instrument :
 BNA_G
 ClientSampleId :
 JLLD2

Quant Time: Aug 09 08:27:51 2019
 Quant Method : Z:\SVOASRV\HPCHEM1\BNA_G\METHODS\SOM-EPA-BG080319MA.M
 Quant Title : SVOA CALIBRATION
 QLast Update : Thu Aug 08 15:44:01 2019
 Response via : Initial Calibration

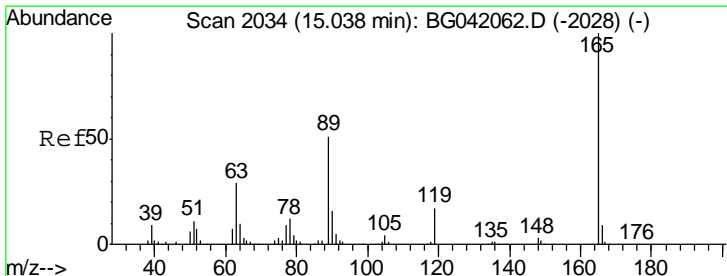
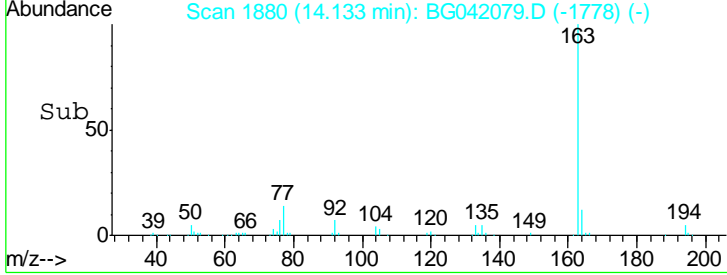
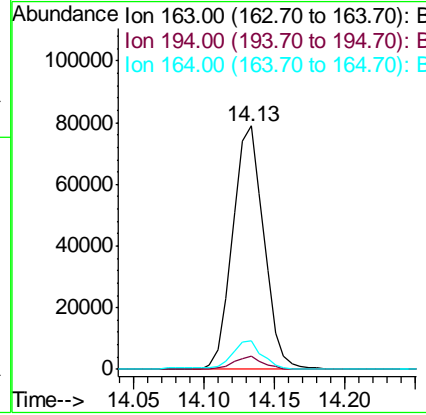
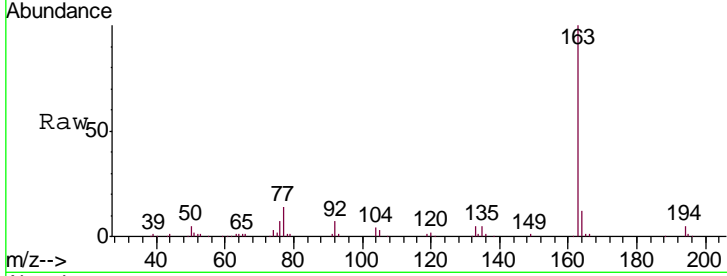




#44
 Dimethylphthalate
 Concen: 7.043 ng/ul
 RT: 14.13 min Scan# 1880
 Delta R.T. -0.00 min
 Lab File: BG042079.D
 Acq: 8 Aug 2019 22:38

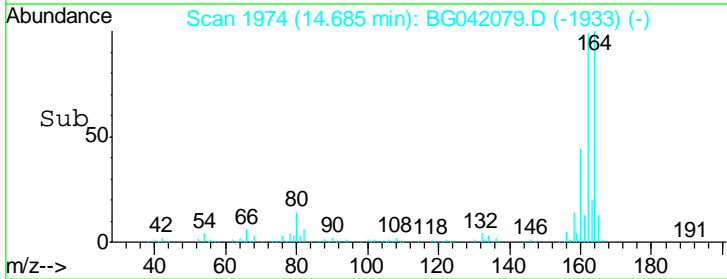
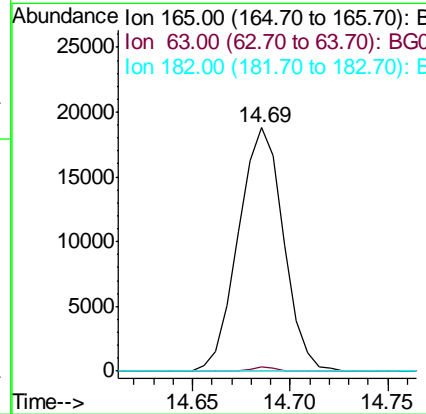
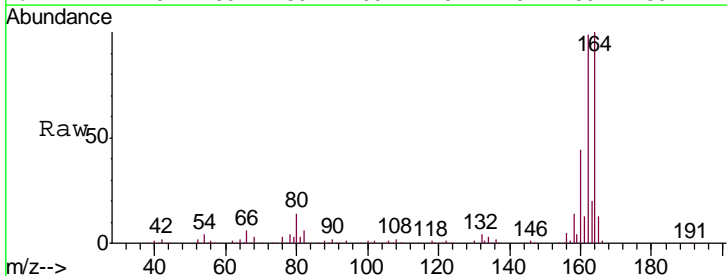
Instrument :
 BNA_G
ClientSampled :
 JLLD2

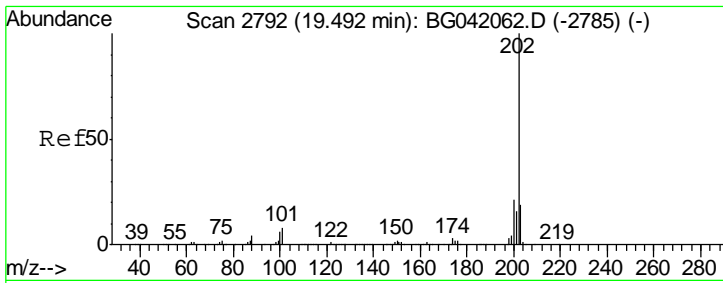
Tgt Ion	Resp	Lower	Upper
163	121542		
194	5.3	4.2	6.2
164	11.5	7.8	11.8



#54
 2,4-Dinitrotoluene
 Concen: 5.498 ng/ul
 RT: 14.69 min Scan# 1974
 Delta R.T. -0.36 min
 Lab File: BG042079.D
 Acq: 8 Aug 2019 22:38

Tgt Ion	Resp	Lower	Upper
165	30009		
63	1.9	29.4	44.2#
182	0.0	2.6	4.0#

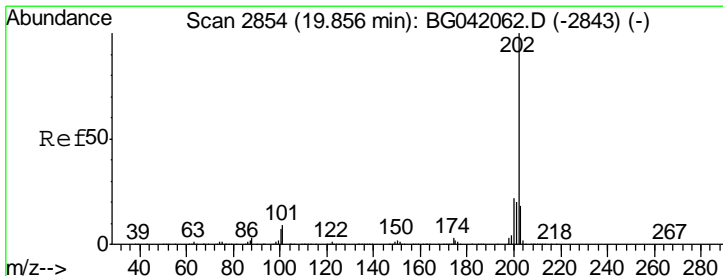
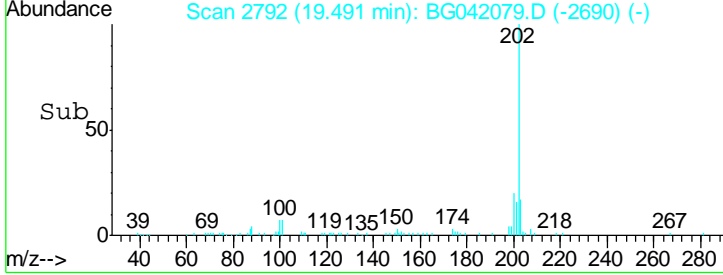
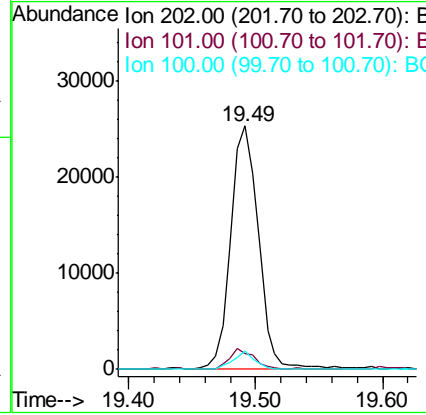
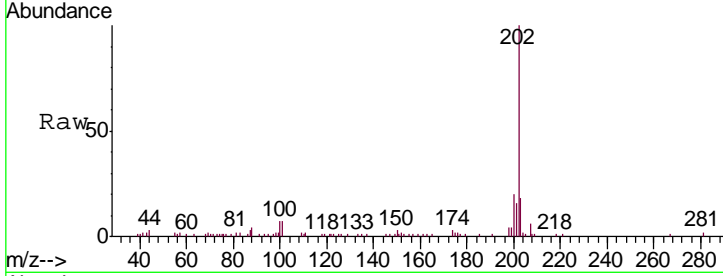




#76
 Fluoranthene
 Concen: 1.251 ng/ul
 RT: 19.49 min Scan# 2792
 Delta R.T. -0.00 min
 Lab File: BG042079.D
 Acq: 8 Aug 2019 22:38

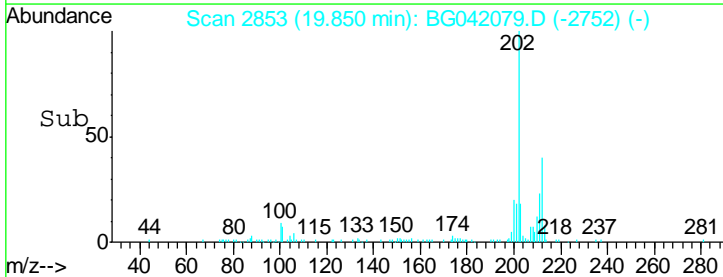
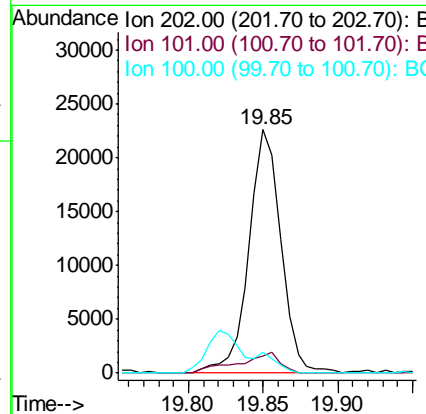
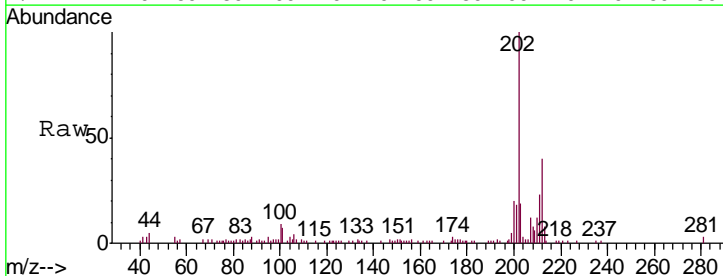
Instrument :
 BNA_G
 ClientSampled :
 JLLD2

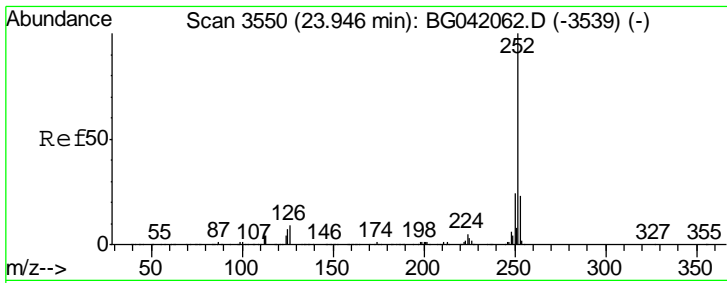
Tgt Ion	Resp	Lower	Upper
202	100		
101	6.5	6.7	10.1#
100	7.3	5.3	7.9



#79
 Pyrene
 Concen: 1.050 ng/ul
 RT: 19.85 min Scan# 2853
 Delta R.T. -0.01 min
 Lab File: BG042079.D
 Acq: 8 Aug 2019 22:38

Tgt Ion	Resp	Lower	Upper
202	100		
101	6.9	7.6	11.4#
100	8.6	6.5	9.7

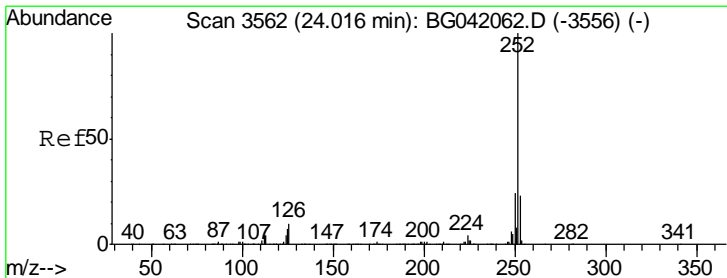
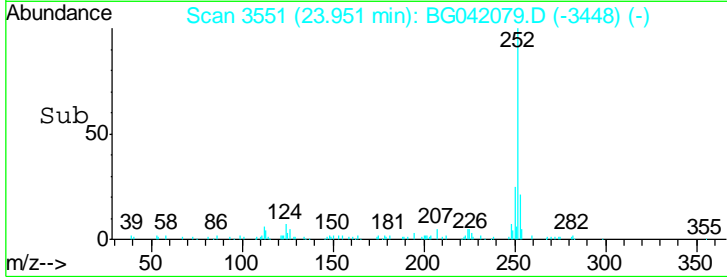
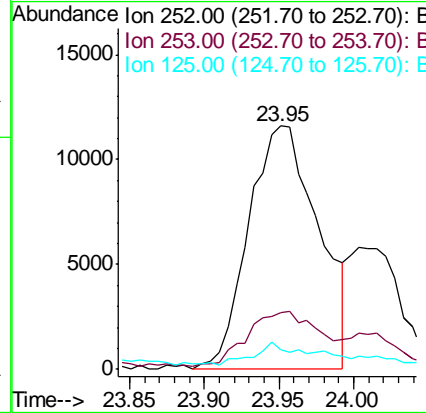
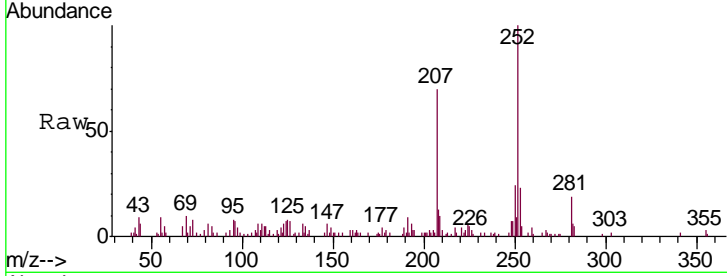




#87
 Benzo(b)fluoranthene
 Concen: 1.085 ng/ul
 RT: 23.95 min Scan# 3551
 Delta R.T. 0.01 min
 Lab File: BG042079.D
 Acq: 8 Aug 2019 22:38

Instrument :
 BNA_G
 ClientSampled :
 JLLD2

Tgt Ion	Resp	Lower	Upper
252	100		
253	23.2	18.4	27.6
125	8.1	5.8	8.8



#88
 Benzo(k)fluoranthene
 Concen: 1.129 ng/ul
 RT: 23.95 min Scan# 3551
 Delta R.T. -0.07 min
 Lab File: BG042079.D
 Acq: 8 Aug 2019 22:38

Tgt Ion	Resp	Lower	Upper
252	100		
253	23.2	18.3	27.5
125	8.1	5.5	8.3

