

Data Path : Z:\svoasrv\HPCHEM1\BNA\_G\Data\BG080823\  
 Data File : BG058645.D  
 Acq On : 8 Aug 2023 16:28  
 Operator : MA/JU  
 Sample : 03903-12  
 Misc :  
 ALS Vial : 13 Sample Multiplier: 1

Instrument :  
 BNA\_G  
 ClientSampleId :  
 MW-01W

Integration Parameters: rteint.p

Integrator: RTE  
 Smoothing : ON Filtering: 5  
 Sampling : 1 Min Area: 3 % of largest Peak  
 Start Thrs: 0.2 Max Peaks: 100  
 Stop Thrs : 0 Peak Location: TOP

If leading or trailing edge < 100 prefer < Baseline drop else tangent >  
 Peak separation: 5

Method : Z:\svoasrv\HPCHEM1\BNA\_G\Methods\8270-BG072823.M  
 Title : ASP BNA STANDARDS FOR 5 POINT CALIBRATION

Signal : TIC: BG058645.D\data.ms

peak #	R.T. min	first scan	max scan	last scan	PK TY	peak height	corr. area	corr. % max.	% of total
1	4.166	175	183	187	rBV2	84811	154394	1.48%	0.346%
2	4.295	201	205	213	rVB3	73391	127828	1.23%	0.287%
3	4.448	225	231	235	rBV	94502	151190	1.45%	0.339%
4	4.530	241	245	251	rVB	92724	142657	1.37%	0.320%
5	4.906	300	309	312	rVV4	71118	143061	1.38%	0.321%
6	5.000	320	325	330	rVV	71347	111449	1.07%	0.250%
7	5.241	361	366	375	rVB3	66070	143348	1.38%	0.322%
8	5.382	382	390	398	rBV	458766	710185	6.83%	1.593%
9	5.505	404	411	418	rVB	67911	145221	1.40%	0.326%
10	5.676	433	440	449	rVV5	58644	164866	1.58%	0.370%
11	5.758	449	454	459	rVV3	95585	169118	1.63%	0.379%
12	6.075	501	508	511	rBV4	86200	174610	1.68%	0.392%
13	6.310	538	548	553	rBV4	125469	349660	3.36%	0.784%
14	6.439	561	570	583	rVB6	111433	303780	2.92%	0.681%
15	6.792	621	630	635	rVV2	110917	198410	1.91%	0.445%
16	6.945	651	656	658	rBV3	65711	104597	1.01%	0.235%
17	6.980	658	662	672	rVB	256299	470168	4.52%	1.055%
18	7.679	775	781	783	rBV	87425	144104	1.39%	0.323%
19	7.708	783	786	794	rVV	127837	223596	2.15%	0.501%
20	7.808	800	803	809	rVV	134017	224986	2.16%	0.505%
21	8.184	860	867	874	rVB	125787	205878	1.98%	0.462%
22	8.302	881	887	895	rBV	264805	459467	4.42%	1.031%
23	8.449	907	912	917	rBV2	267412	450514	4.33%	1.010%
24	8.496	917	920	926	rVB	92613	145874	1.40%	0.327%
25	8.637	935	944	961	rVB3	60152	168256	1.62%	0.377%
26	8.913	980	991	996	rBV	495797	879279	8.45%	1.972%
27	8.983	996	1003	1017	rVB2	629381	1529924	14.71%	3.431%
28	9.154	1029	1032	1042	rVB9	82368	213944	2.06%	0.480%
29	9.260	1042	1050	1054	rBV	81155	157556	1.51%	0.353%
30	9.436	1076	1080	1085	rVV	302700	472921	4.55%	1.061%
31	9.694	1116	1124	1129	rBV2	100801	184704	1.78%	0.414%
32	9.800	1135	1142	1148	rBV2	140385	302893	2.91%	0.679%
33	9.859	1148	1152	1155	rVV2	145248	249211	2.40%	0.559%
34	9.888	1155	1157	1165	rVB3	95393	181210	1.74%	0.406%
35	10.006	1172	1177	1184	rVB2	219548	396222	3.81%	0.889%
36	10.082	1184	1190	1198	rVB	63420	116446	1.12%	0.261%

Data Path : Z:\svoasrv\HPCHEM1\BNA\_G\Data\BG080823\  
 Data File : BG058645.D  
 Acq On : 8 Aug 2023 16:28  
 Operator : MA/JU  
 Sample : 03903-12  
 Misc :  
 ALS Vial : 13 Sample Multiplier: 1

Instrument :  
 BNA\_G  
 ClientSampleId :  
 MW-01W

Integration Parameters: rteint.p  
 Integrator: RTE  
 Smoothing : ON  
 Sampling : 1  
 Start Thrs : 0.2  
 Stop Thrs : 0  
 Filtering: 5  
 Min Area: 3 % of largest Peak  
 Max Peaks: 100  
 Peak Location: TOP

If leading or trailing edge < 100 prefer < Baseline drop else tangent >  
 Peak separation: 5

Method : Z:\svoasrv\HPCHEM1\BNA\_G\Methods\8270-BG072823.M  
 Title : ASP BNA STANDARDS FOR 5 POINT CALIBRATION

37	10.188	1201	1208	1214	rBV5	57668	125832	1.21%	0.282%
38	10.311	1222	1229	1235	rVB	93887	163270	1.57%	0.366%
39	10.382	1235	1241	1252	rBV	260077	544625	5.24%	1.222%
40	10.593	1268	1277	1284	rVV2	308578	936235	9.00%	2.100%
41	10.658	1284	1288	1294	rVB4	206157	404485	3.89%	0.907%
42	10.723	1294	1299	1309	rVB	273218	478294	4.60%	1.073%
43	10.822	1309	1316	1323	rVB	122999	223726	2.15%	0.502%
44	11.269	1387	1392	1396	rBV	77780	112782	1.08%	0.253%
45	11.428	1415	1419	1428	rVV5	41660	104609	1.01%	0.235%
46	11.527	1429	1436	1442	rVB	122537	215562	2.07%	0.483%
47	11.721	1462	1469	1475	rVB	135161	231764	2.23%	0.520%
48	12.003	1511	1517	1524	rBV2	70017	136178	1.31%	0.305%
49	12.403	1573	1585	1593	rBV3	48899	142637	1.37%	0.320%
50	12.497	1593	1601	1611	rVV3	61283	161415	1.55%	0.362%
51	13.079	1692	1700	1711	rVB	1501818	2316088	22.27%	5.195%
52	13.425	1748	1759	1766	rBV2	117585	214393	2.06%	0.481%
53	14.013	1854	1859	1873	rBV2	67673	187139	1.80%	0.420%
54	14.459	1926	1935	1945	rBV2	420230	790504	7.60%	1.773%
55	14.882	1999	2007	2015	rBV	161989	267152	2.57%	0.599%
56	15.952	2182	2189	2205	rBV	1284387	2105351	20.24%	4.722%
57	16.539	2285	2289	2296	rVV2	47629	112050	1.08%	0.251%
58	16.604	2296	2300	2309	rVB2	77286	119303	1.15%	0.268%
59	17.203	2396	2402	2408	rBV	528159	795799	7.65%	1.785%
60	17.908	2516	2522	2528	rVB	368848	517151	4.97%	1.160%
61	18.096	2547	2554	2563	rBV	177387	285512	2.74%	0.640%
62	18.878	2674	2687	2724	rBV	3987815	10401818	100.00%	23.330%
63	19.824	2842	2848	2857	rBV	2452083	3354757	32.25%	7.524%
64	21.140	3069	3072	3091	rVB	31798	121156	1.16%	0.272%
65	21.445	3118	3124	3133	rBV2	531870	854101	8.21%	1.916%
66	22.961	3373	3382	3402	rBV	3390843	6754348	64.93%	15.149%
67	24.518	3637	3647	3668	rVB	321805	936383	9.00%	2.100%

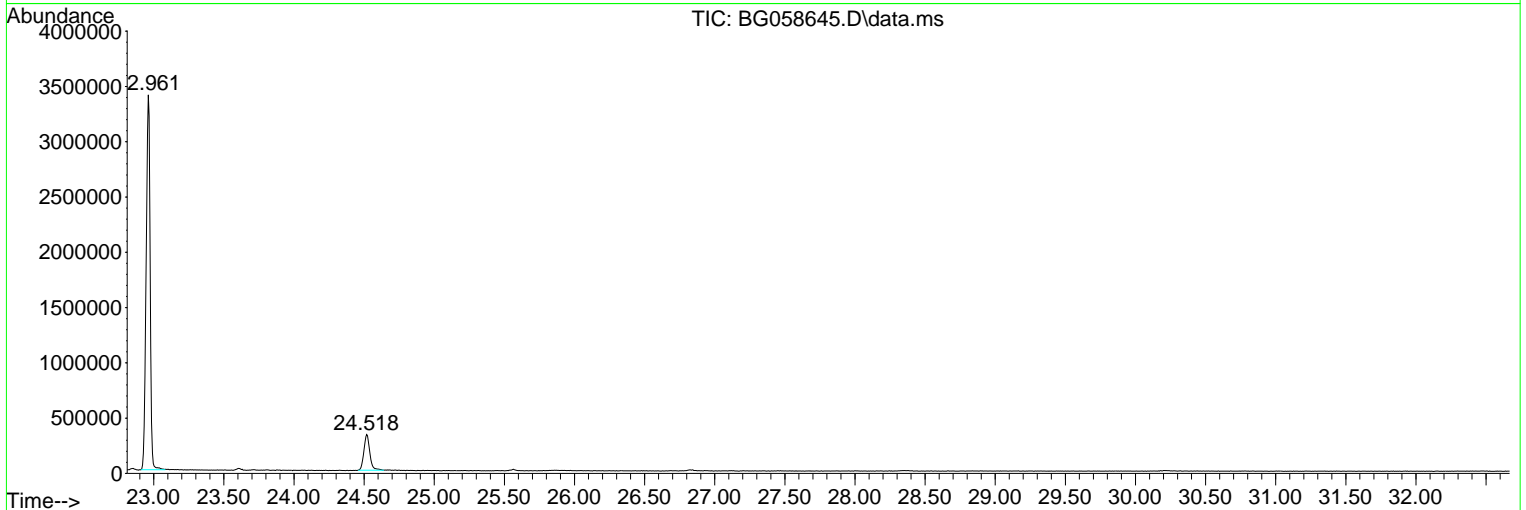
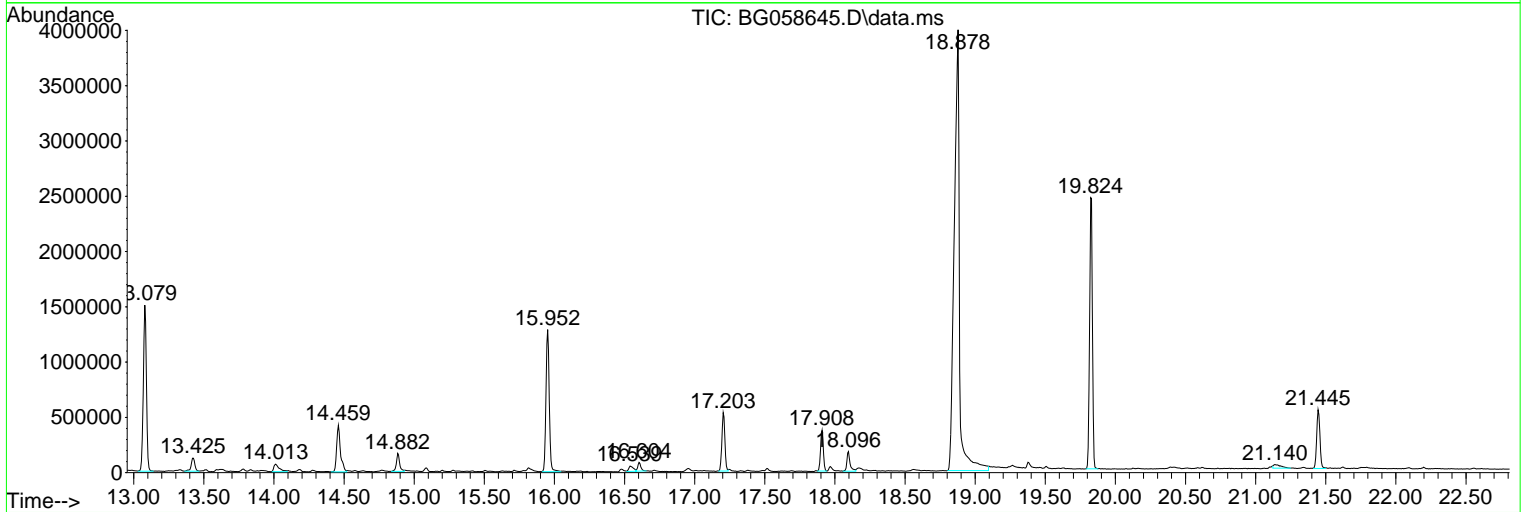
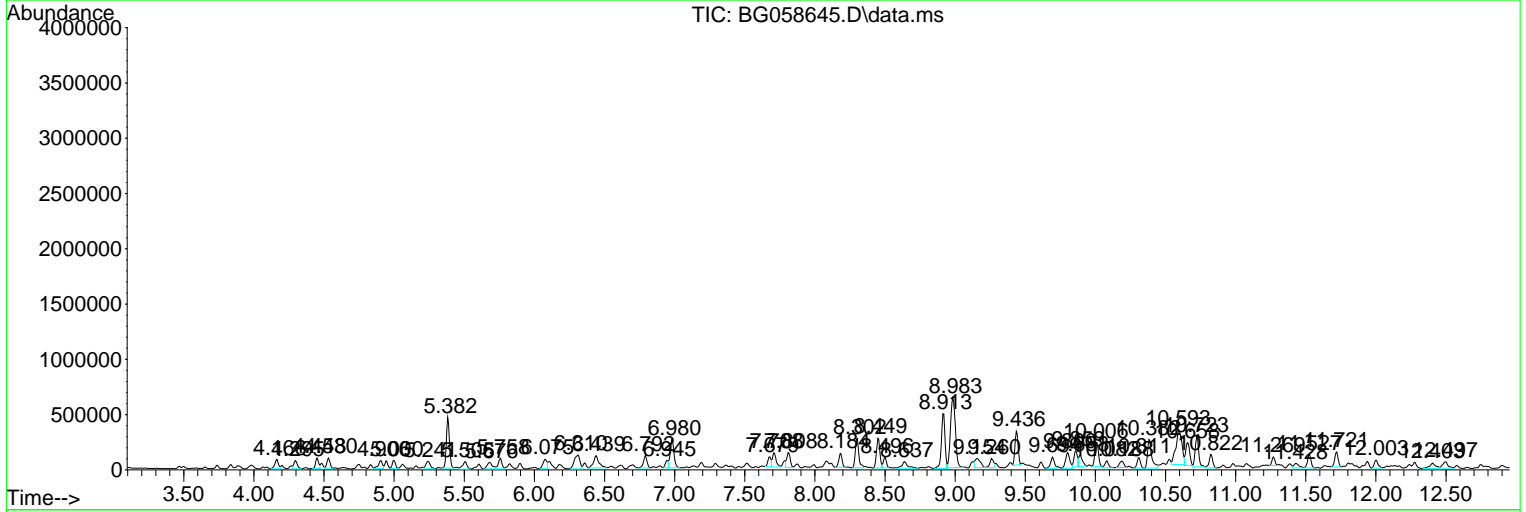
Sum of corrected areas: 44585946

Data Path : Z:\svoasrv\HPCHEM1\BNA\_G\Data\BG080823\  
 Data File : BG058645.D  
 Acq On : 8 Aug 2023 16:28  
 Operator : MA/JU  
 Sample : 03903-12  
 Misc :  
 ALS Vial : 13 Sample Multiplier: 1

Instrument :  
 BNA\_G  
 ClientSampleId :  
 MW-01W

Quant Method : Z:\svoasrv\HPCHEM1\BNA\_G\Methods\8270-BG072823.M  
 Quant Title : ASP BNA STANDARDS FOR 5 POINT CALIBRATION

TIC Library : C:\Database\NIST20.L  
 TIC Integration Parameters: LSCINT.P



Data Path : Z:\svoasrv\HPCHEM1\BNA\_G\Data\BG080823\  
 Data File : BG058645.D  
 Acq On : 8 Aug 2023 16:28  
 Operator : MA/JU  
 Sample : 03903-12  
 Misc :  
 ALS Vial : 13 Sample Multiplier: 1

Instrument :  
 BNA\_G  
 ClientSampleId :  
 MW-01W

Quant Method : Z:\svoasrv\HPCHEM1\BNA\_G\Methods\8270-BG072823.M  
 Quant Title : ASP BNA STANDARDS FOR 5 POINT CALIBRATION

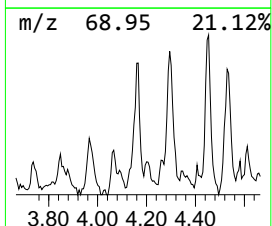
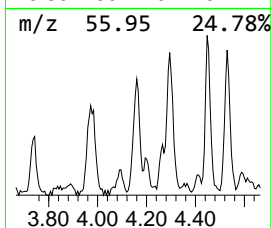
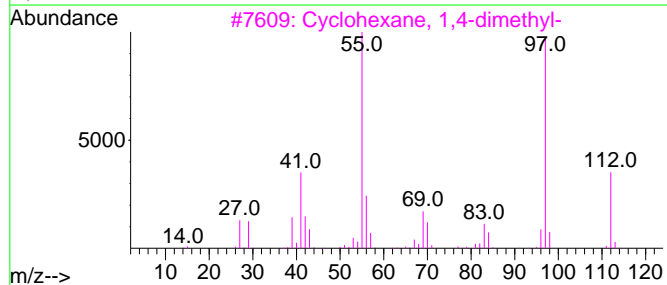
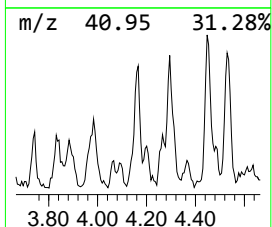
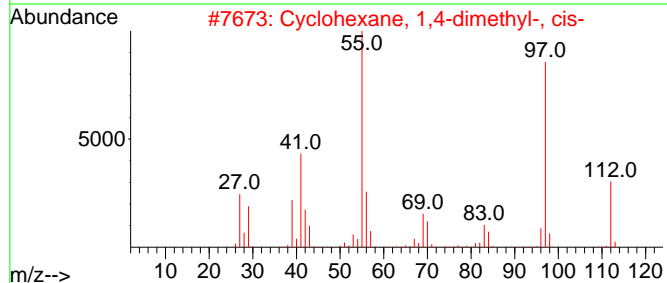
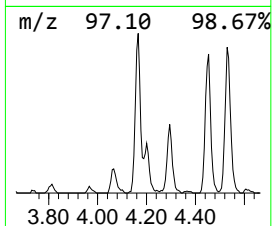
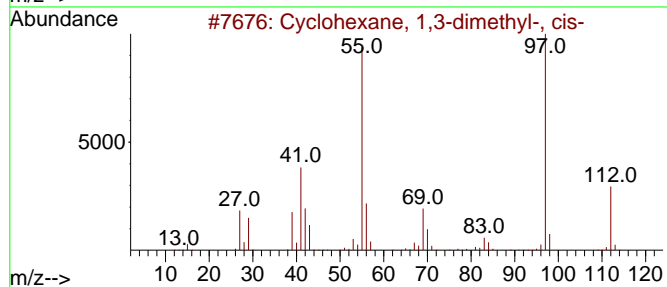
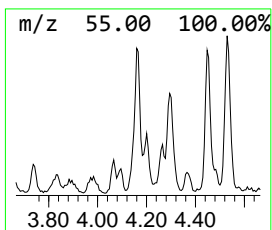
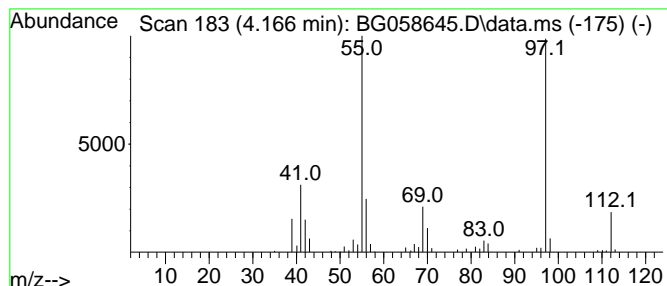
TIC Library : C:\Database\NIST20.L  
 TIC Integration Parameters: LSCINT.P

\*\*\*\*\*  
 Peak Number 1 Cyclohexane, 1,3-dimethyl-,... Concentration Rank 16

R.T.	EstConc	Area	Relative to ISTD	R.T.
4.166	13.72 ng	154394	1,4-Dichlorobenzene-d4	7.808

Hit#	of 5	Tentative ID	MW	MolForm	CAS#	Qual
1		Cyclohexane, 1,3-dimethyl-, cis-	112	C8H16	000638-04-0	95
2		Cyclohexane, 1,4-dimethyl-, cis-	112	C8H16	000624-29-3	87
3		Cyclohexane, 1,4-dimethyl-	112	C8H16	000589-90-2	87
4		Cyclohexane, 1,4-dimethyl-, trans-	112	C8H16	002207-04-7	86
5		1H-Pyrazole, 4,5-dihydro-3,4,5-t...	112	C6H12N2	022591-95-3	80



Data Path : Z:\svoasrv\HPCHEM1\BNA\_G\Data\BG080823\  
 Data File : BG058645.D  
 Acq On : 8 Aug 2023 16:28  
 Operator : MA/JU  
 Sample : 03903-12  
 Misc :  
 ALS Vial : 13 Sample Multiplier: 1

Instrument :  
 BNA\_G  
 ClientSampleId :  
 MW-01W

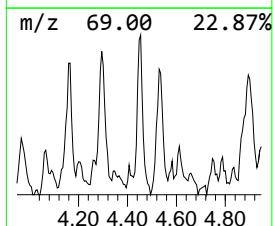
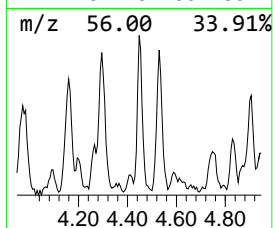
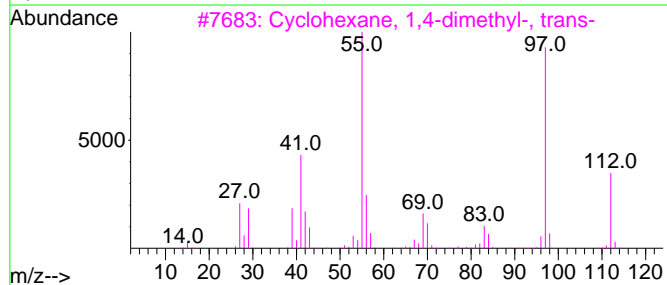
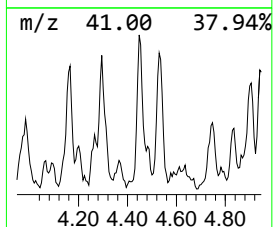
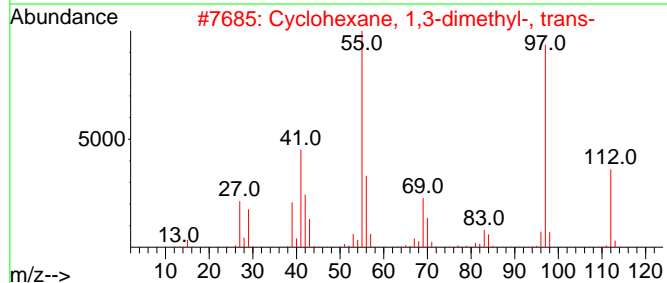
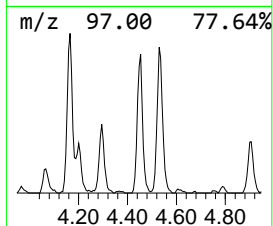
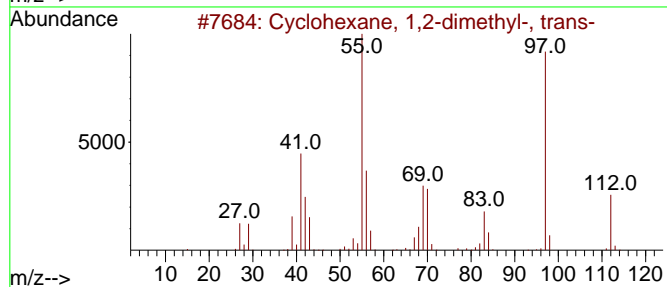
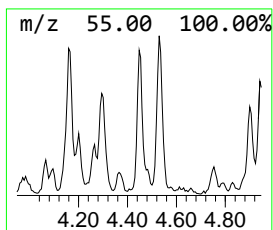
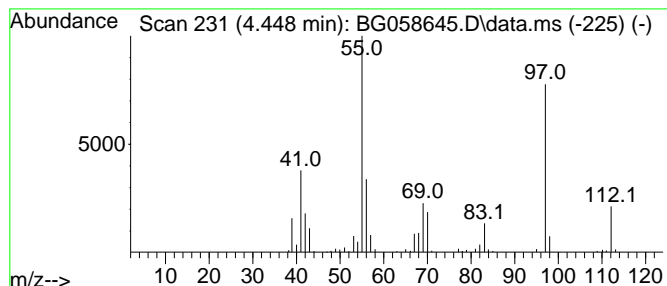
Quant Method : Z:\svoasrv\HPCHEM1\BNA\_G\Methods\8270-BG072823.M  
 Quant Title : ASP BNA STANDARDS FOR 5 POINT CALIBRATION

TIC Library : C:\Database\NIST20.L  
 TIC Integration Parameters: LSCINT.P

\*\*\*\*\*  
 Peak Number 2 Cyclohexane, 1,2-dimethyl-,... Concentration Rank 17

R.T.	EstConc	Area	Relative to ISTD	R.T.
4.448	13.44 ng	151190	1,4-Dichlorobenzene-d4	7.808

Hit#	of	5	Tentative ID	MW	MolForm	CAS#	Qual
1			Cyclohexane, 1,2-dimethyl-, trans-	112	C8H16	006876-23-9	90
2			Cyclohexane, 1,3-dimethyl-, trans-	112	C8H16	002207-03-6	90
3			Cyclohexane, 1,4-dimethyl-, trans-	112	C8H16	002207-04-7	90
4			Cyclohexane, 1,4-dimethyl-, cis-	112	C8H16	000624-29-3	90
5			Cyclohexane, 1,2-dimethyl- (cis/...	112	C8H16	000583-57-3	90



Data Path : Z:\svoasrv\HPCHEM1\BNA\_G\Data\BG080823\  
 Data File : BG058645.D  
 Acq On : 8 Aug 2023 16:28  
 Operator : MA/JU  
 Sample : 03903-12  
 Misc :  
 ALS Vial : 13 Sample Multiplier: 1

Instrument :  
 BNA\_G  
 ClientSampleId :  
 MW-01W

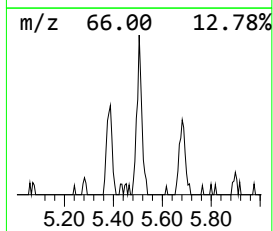
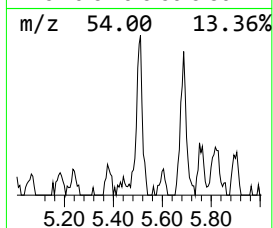
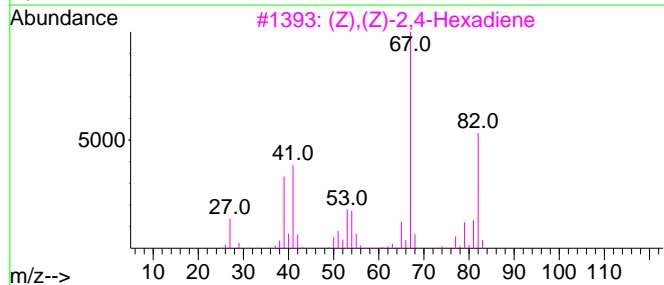
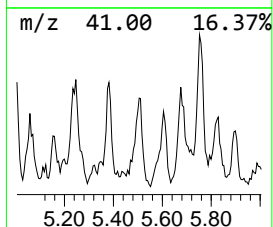
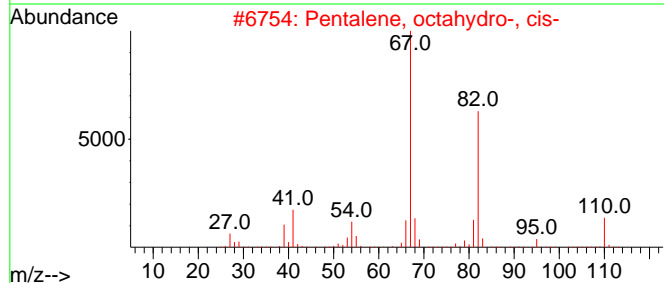
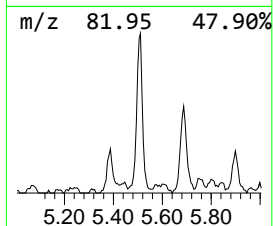
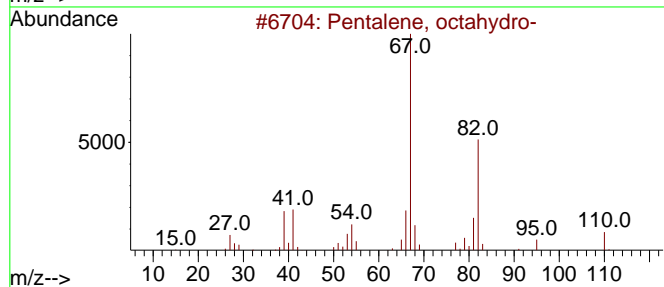
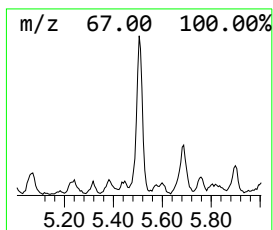
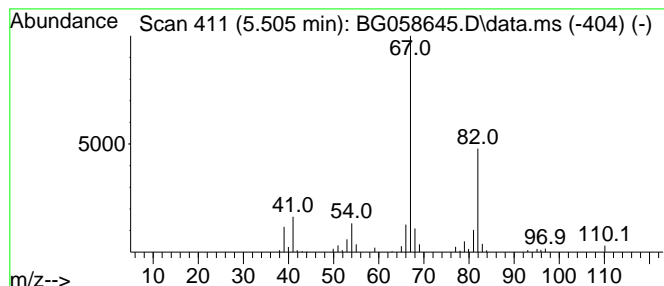
Quant Method : Z:\svoasrv\HPCHEM1\BNA\_G\Methods\8270-BG072823.M  
 Quant Title : ASP BNA STANDARDS FOR 5 POINT CALIBRATION

TIC Library : C:\Database\NIST20.L  
 TIC Integration Parameters: LSCINT.P

\*\*\*\*\*  
 Peak Number 3 Pentalene, octahydro- Concentration Rank 20

R.T.	EstConc	Area	Relative to ISTD	R.T.
5.505	12.91 ng	145221	1,4-Dichlorobenzene-d4	7.808

Hit#	of	5	Tentative ID	MW	MolForm	CAS#	Qual
1			Pentalene, octahydro-	110	C8H14	000694-72-4	91
2			Pentalene, octahydro-, cis-	110	C8H14	001755-05-1	83
3			(Z),(Z)-2,4-Hexadiene	82	C6H10	006108-61-8	78
4			4-Hexen-1-ol, acetate	142	C8H14O2	072237-36-6	78
5			2,4-Hexadiene, (E,Z)-	82	C6H10	005194-50-3	72



Data Path : Z:\svoasrv\HPCHEM1\BNA\_G\Data\BG080823\  
 Data File : BG058645.D  
 Acq On : 8 Aug 2023 16:28  
 Operator : MA/JU  
 Sample : 03903-12  
 Misc :  
 ALS Vial : 13 Sample Multiplier: 1

Instrument :  
 BNA\_G  
 ClientSampleId :  
 MW-01W

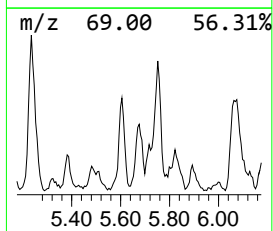
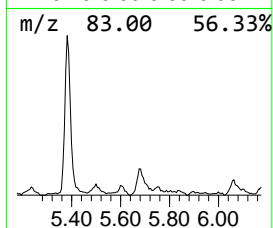
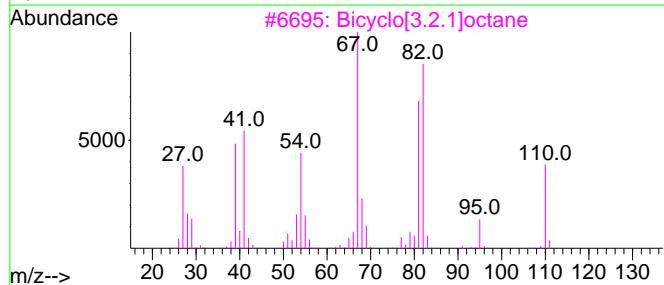
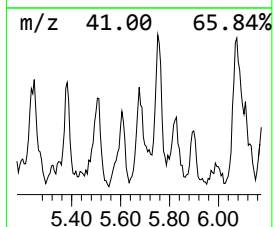
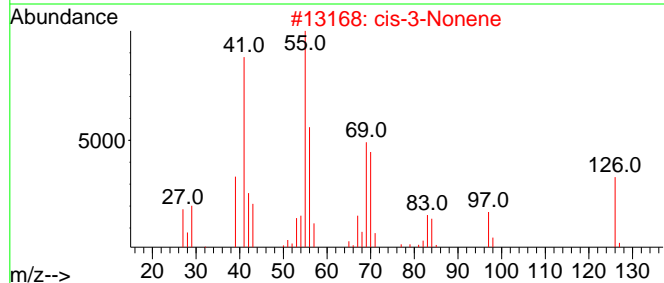
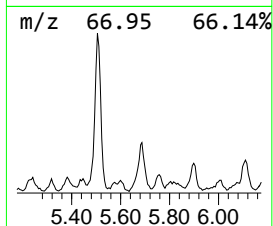
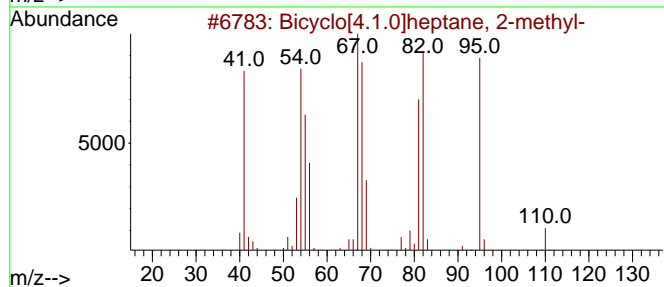
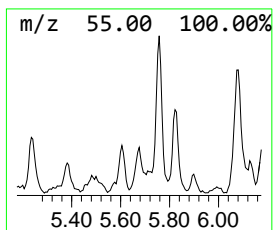
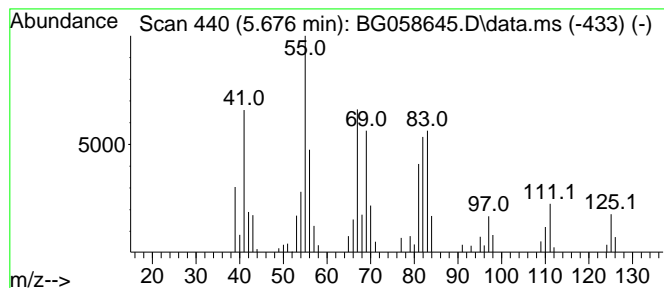
Quant Method : Z:\svoasrv\HPCHEM1\BNA\_G\Methods\8270-BG072823.M  
 Quant Title : ASP BNA STANDARDS FOR 5 POINT CALIBRATION

TIC Library : C:\Database\NIST20.L  
 TIC Integration Parameters: LSCINT.P

\*\*\*\*\*  
 Peak Number 4 unknown5.676 Concentration Rank 15

R.T.	EstConc	Area	Relative to ISTD	R.T.
5.676	14.66 ng	164866	1,4-Dichlorobenzene-d4	7.808

Hit#	of 5	Tentative ID	MW	MolForm	CAS#	Qual
1		Bicyclo[4.1.0]heptane, 2-methyl-	110	C8H14	041977-46-2	41
2		cis-3-Nonene	126	C9H18	020237-46-1	35
3		Bicyclo[3.2.1]octane	110	C8H14	006221-55-2	30
4		Cyclopentane, (2-methylpropyl)-	126	C9H18	003788-32-7	30
5		2H-Azepin-2-one, 1,5,6,7-tetrahy...	111	C6H9NO	002228-79-7	27



Data Path : Z:\svoasrv\HPCHEM1\BNA\_G\Data\BG080823\  
 Data File : BG058645.D  
 Acq On : 8 Aug 2023 16:28  
 Operator : MA/JU  
 Sample : 03903-12  
 Misc :  
 ALS Vial : 13 Sample Multiplier: 1

Instrument :  
 BNA\_G  
 ClientSampleId :  
 MW-01W

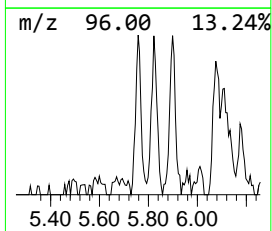
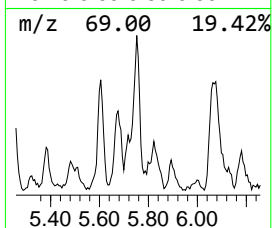
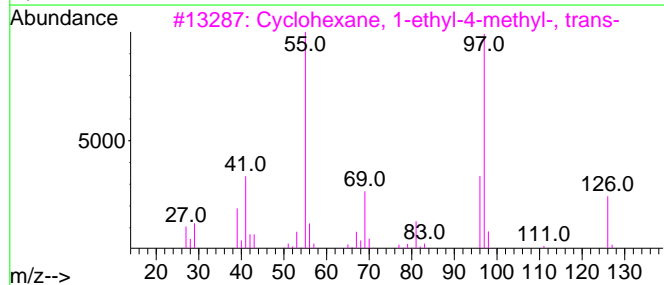
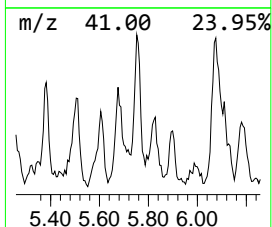
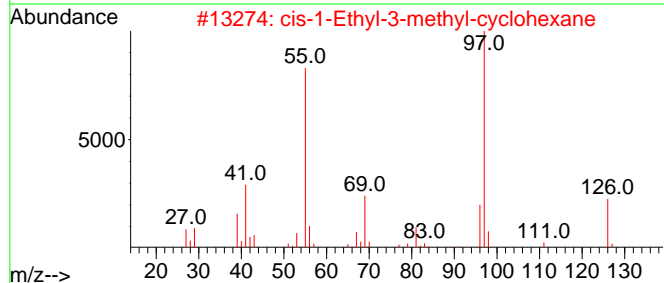
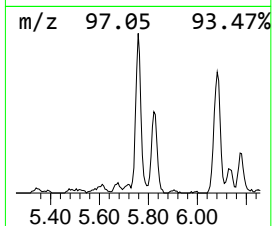
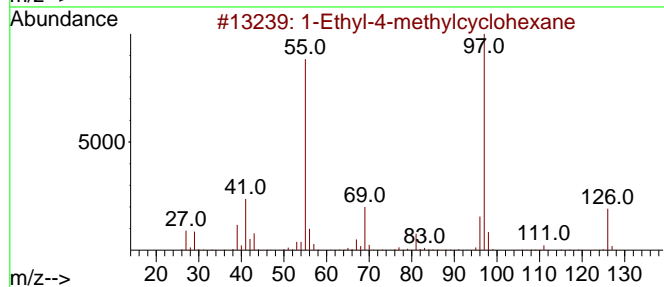
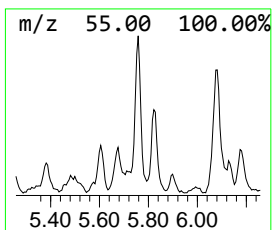
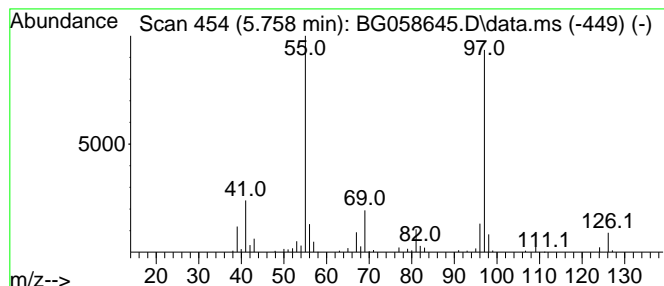
Quant Method : Z:\svoasrv\HPCHEM1\BNA\_G\Methods\8270-BG072823.M  
 Quant Title : ASP BNA STANDARDS FOR 5 POINT CALIBRATION

TIC Library : C:\Database\NIST20.L  
 TIC Integration Parameters: LSCINT.P

\*\*\*\*\*  
 Peak Number 5 1-Ethyl-4-methylcyclohexane Concentration Rank 13

R.T.	EstConc	Area	Relative to ISTD	R.T.
5.758	15.03 ng	169118	1,4-Dichlorobenzene-d4	7.808

Hit#	of	5	Tentative ID	MW	MolForm	CAS#	Qual
1			1-Ethyl-4-methylcyclohexane	126	C9H18	003728-56-1	87
2			cis-1-Ethyl-3-methyl-cyclohexane	126	C9H18	019489-10-2	87
3			Cyclohexane, 1-ethyl-4-methyl-, ...	126	C9H18	006236-88-0	72
4			Sulfurous acid, cyclohexylmethyl...	332	C18H36O3S	1000309-21-9	72
5			Cyclohexane, 1-ethyl-2-methyl-, ...	126	C9H18	004923-77-7	72





Data Path : Z:\svoasrv\HPCHEM1\BNA\_G\Data\BG080823\  
 Data File : BG058645.D  
 Acq On : 8 Aug 2023 16:28  
 Operator : MA/JU  
 Sample : 03903-12  
 Misc :  
 ALS Vial : 13 Sample Multiplier: 1

Instrument :  
 BNA\_G  
 ClientSampleId :  
 MW-01W

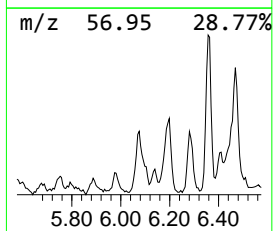
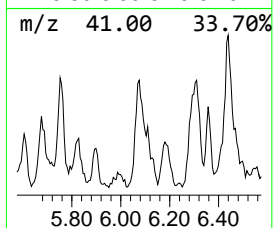
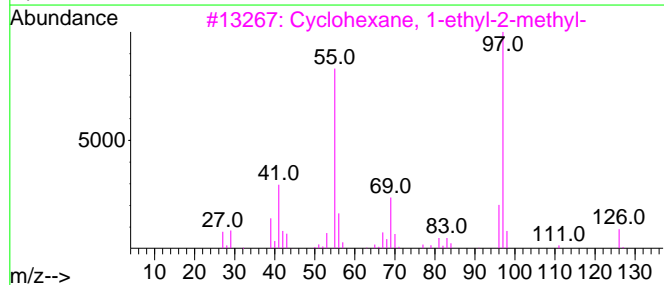
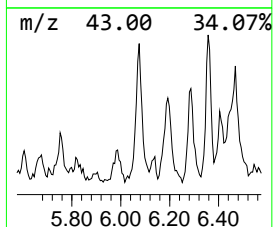
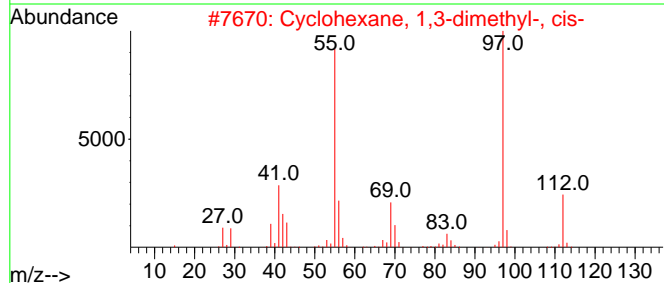
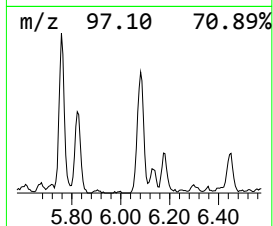
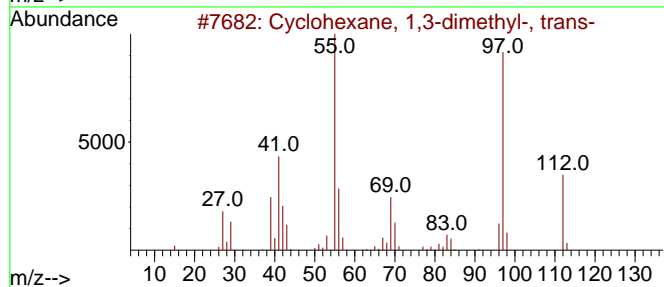
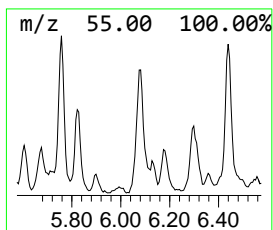
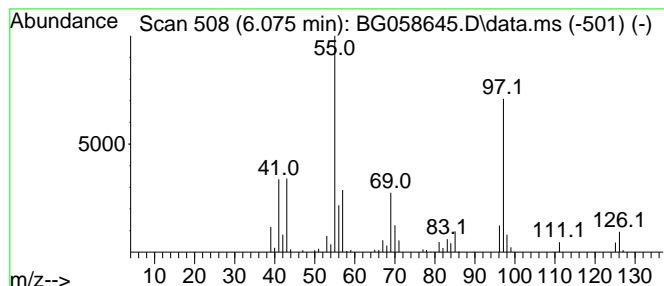
Quant Method : Z:\svoasrv\HPCHEM1\BNA\_G\Methods\8270-BG072823.M  
 Quant Title : ASP BNA STANDARDS FOR 5 POINT CALIBRATION

TIC Library : C:\Database\NIST20.L  
 TIC Integration Parameters: LSCINT.P

\*\*\*\*\*  
 Peak Number 6 Cyclohexane, 1,3-dimethyl-,... Concentration Rank 12

R.T.	EstConc	Area	Relative to ISTD	R.T.
6.075	15.52 ng	174610	1,4-Dichlorobenzene-d4	7.808

Hit#	of	5	Tentative ID	MW	MolForm	CAS#	Qual
1			Cyclohexane, 1,3-dimethyl-, trans-	112	C8H16	002207-03-6	59
2			Cyclohexane, 1,3-dimethyl-, cis-	112	C8H16	000638-04-0	53
3			Cyclohexane, 1-ethyl-2-methyl-	126	C9H18	003728-54-9	52
4			Cyclohexane, 1-ethyl-4-methyl-, ...	126	C9H18	004926-78-7	52
5			Cyclohexane, 1-ethyl-2-methyl-, ...	126	C9H18	004923-77-7	49



Data Path : Z:\svoasrv\HPCHEM1\BNA\_G\Data\BG080823\  
 Data File : BG058645.D  
 Acq On : 8 Aug 2023 16:28  
 Operator : MA/JU  
 Sample : 03903-12  
 Misc :  
 ALS Vial : 13 Sample Multiplier: 1

Instrument :  
 BNA\_G  
 ClientSampleId :  
 MW-01W

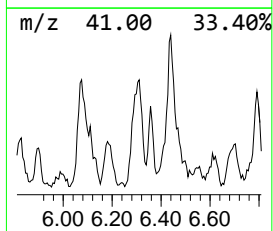
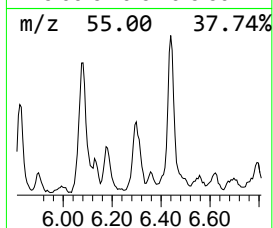
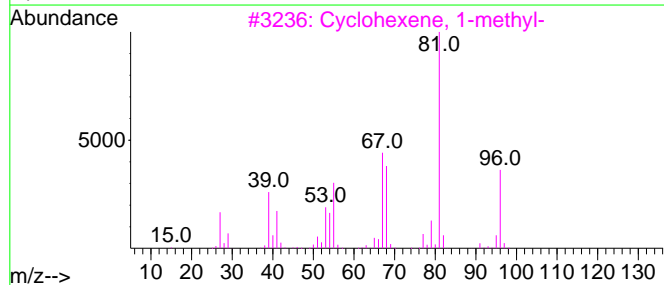
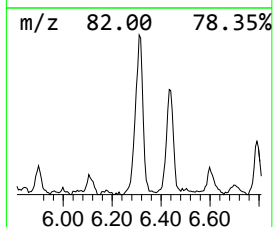
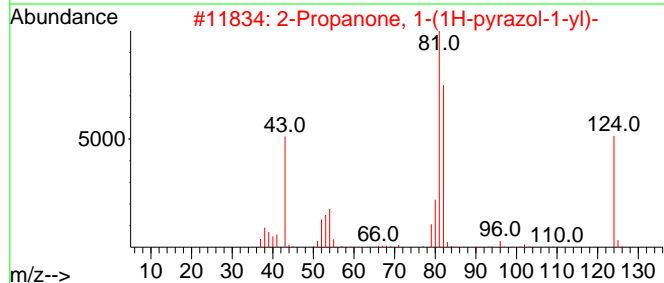
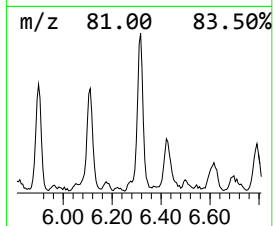
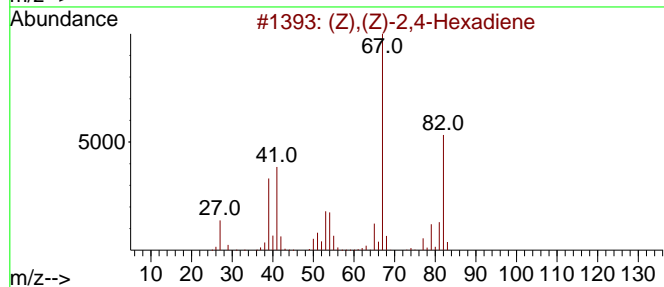
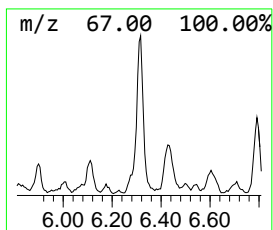
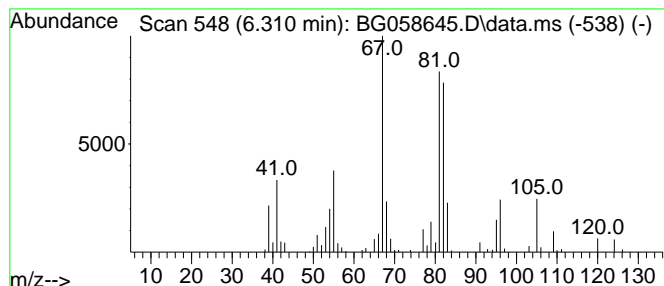
Quant Method : Z:\svoasrv\HPCHEM1\BNA\_G\Methods\8270-BG072823.M  
 Quant Title : ASP BNA STANDARDS FOR 5 POINT CALIBRATION

TIC Library : C:\Database\NIST20.L  
 TIC Integration Parameters: LSCINT.P

\*\*\*\*\*  
 Peak Number 7 unknown6.310 Concentration Rank 6

R.T.	EstConc	Area	Relative to ISTD	R.T.
6.310	31.08 ng	349660	1,4-Dichlorobenzene-d4	7.808

Hit#	of	5	Tentative ID	MW	MolForm	CAS#	Qual
1	(Z),(Z)-2,4-Hexadiene	82	C6H10	006108-61-8	43		
2	2-Propanone, 1-(1H-pyrazol-1-yl)-	124	C6H8N2O	1010337-51-8	38		
3	Cyclohexene, 1-methyl-	96	C7H12	000591-49-1	38		
4	Cyclobutane, (1-methylethylidene)-	96	C7H12	001528-22-9	25		
5	Cyclobutane, 1-ethyl-3-methylene-	96	C7H12	056335-70-7	25		



Data Path : Z:\svoasrv\HPCHEM1\BNA\_G\Data\BG080823\  
 Data File : BG058645.D  
 Acq On : 8 Aug 2023 16:28  
 Operator : MA/JU  
 Sample : 03903-12  
 Misc :  
 ALS Vial : 13 Sample Multiplier: 1

Instrument :  
 BNA\_G  
 ClientSampleId :  
 MW-01W

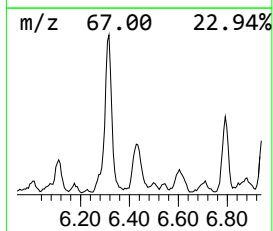
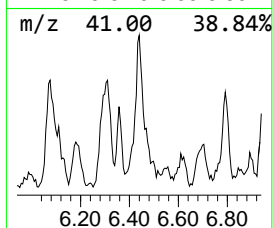
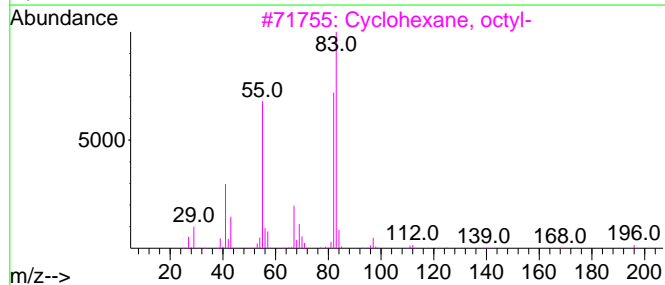
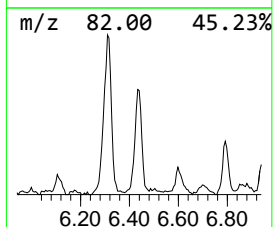
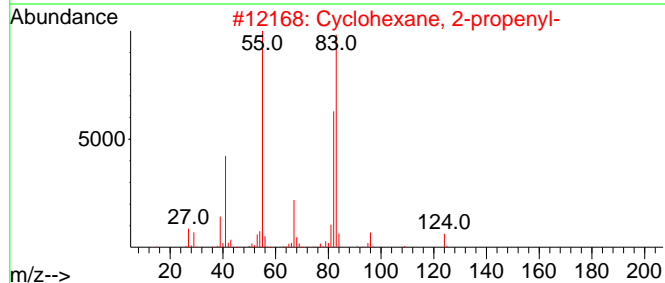
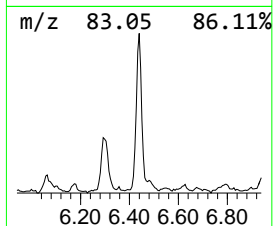
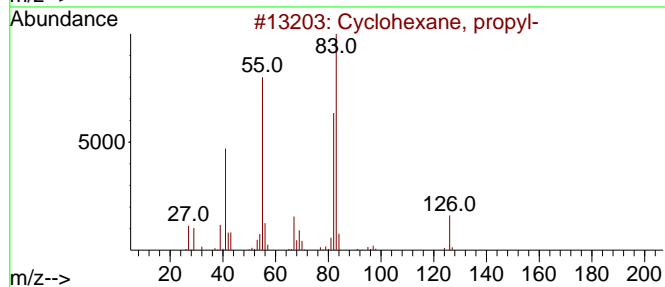
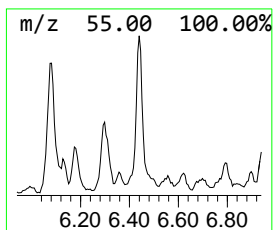
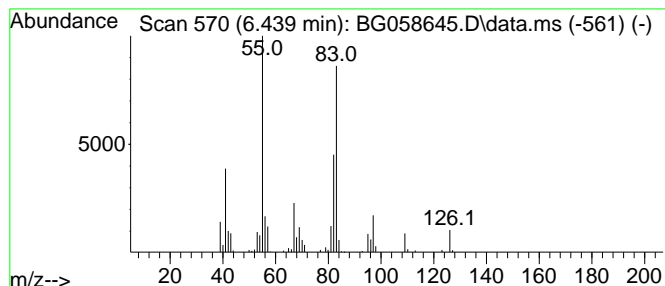
Quant Method : Z:\svoasrv\HPCHEM1\BNA\_G\Methods\8270-BG072823.M  
 Quant Title : ASP BNA STANDARDS FOR 5 POINT CALIBRATION

TIC Library : C:\Database\NIST20.L  
 TIC Integration Parameters: LSCINT.P

\*\*\*\*\*  
 Peak Number 8 Cyclohexane, propyl- Concentration Rank 7

R.T.	EstConc	Area	Relative to ISTD	R.T.
6.439	27.00 ng	303780	1,4-Dichlorobenzene-d4	7.808

Hit#	of	5	Tentative ID	MW	MolForm	CAS#	Qual
1			Cyclohexane, propyl-	126	C9H18	001678-92-8	72
2			Cyclohexane, 2-propenyl-	124	C9H16	002114-42-3	72
3			Cyclohexane, octyl-	196	C14H28	001795-15-9	64
4			Cyclohexane, ethyl-	112	C8H16	001678-91-7	59
5			1-Cyclohexylethanol, pentafluoro...	274	C11H15F5O2	1000365-50-1	53



Data Path : Z:\svoasrv\HPCHEM1\BNA\_G\Data\BG080823\  
 Data File : BG058645.D  
 Acq On : 8 Aug 2023 16:28  
 Operator : MA/JU  
 Sample : 03903-12  
 Misc :  
 ALS Vial : 13 Sample Multiplier: 1

Instrument :  
 BNA\_G  
 ClientSampleId :  
 MW-01W

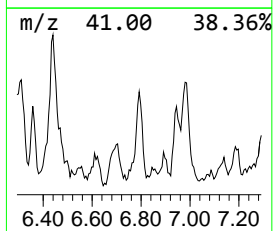
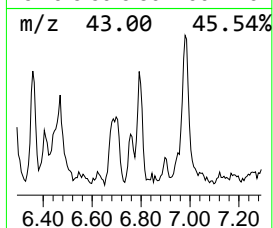
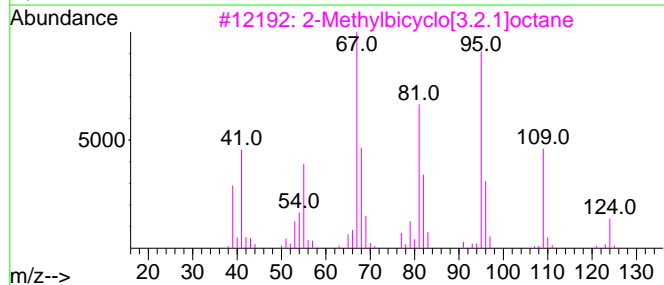
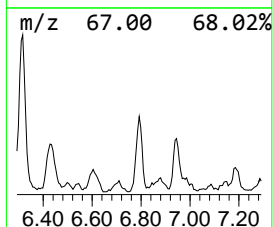
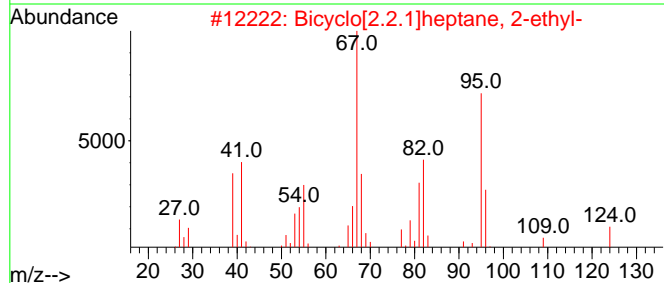
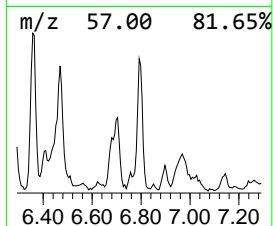
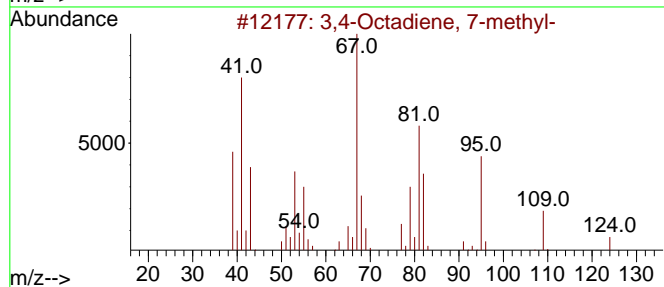
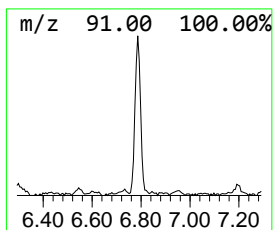
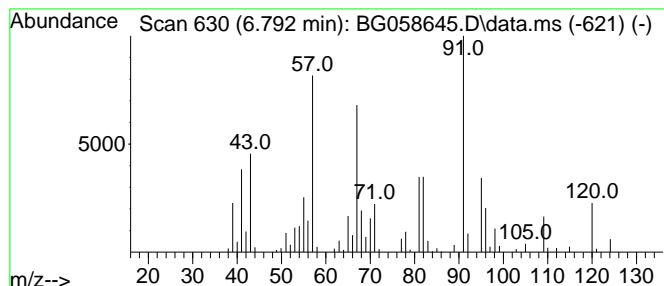
Quant Method : Z:\svoasrv\HPCHEM1\BNA\_G\Methods\8270-BG072823.M  
 Quant Title : ASP BNA STANDARDS FOR 5 POINT CALIBRATION

TIC Library : C:\Database\NIST20.L  
 TIC Integration Parameters: LSCINT.P

\*\*\*\*\*  
 Peak Number 9 unknown6.792 Concentration Rank 11

R.T.	EstConc	Area	Relative to ISTD	R.T.
6.792	17.64 ng	198410	1,4-Dichlorobenzene-d4	7.808

Hit#	of 5	Tentative ID	MW	MolForm	CAS#	Qual
1		3,4-Octadiene, 7-methyl-	124	C9H16	037050-05-8	46
2		Bicyclo[2.2.1]heptane, 2-ethyl-	124	C9H16	002146-41-0	43
3		2-Methylbicyclo[3.2.1]octane	124	C9H16	1010215-28-0	38
4		Benzene, propyl-	120	C9H12	000103-65-1	25
5		4-Methyl-2-pentyne	82	C6H10	021020-27-9	20



Data Path : Z:\svoasrv\HPCHEM1\BNA\_G\Data\BG080823\  
 Data File : BG058645.D  
 Acq On : 8 Aug 2023 16:28  
 Operator : MA/JU  
 Sample : 03903-12  
 Misc :  
 ALS Vial : 13 Sample Multiplier: 1

Instrument :  
 BNA\_G  
 ClientSampleId :  
 MW-01W

Quant Method : Z:\svoasrv\HPCHEM1\BNA\_G\Methods\8270-BG072823.M  
 Quant Title : ASP BNA STANDARDS FOR 5 POINT CALIBRATION

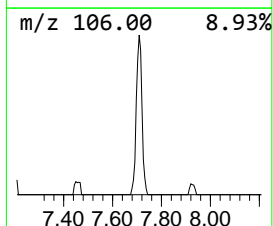
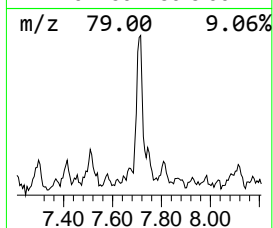
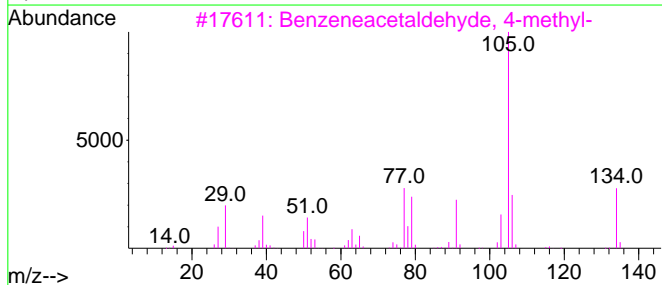
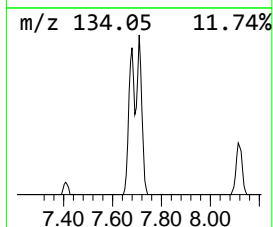
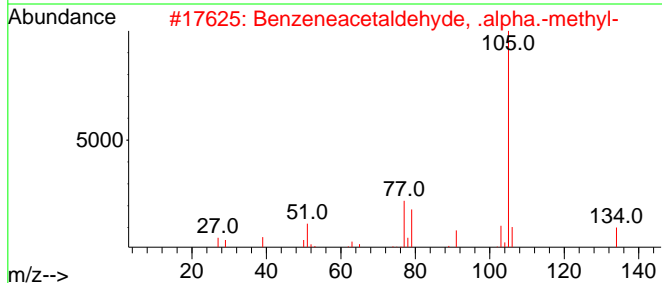
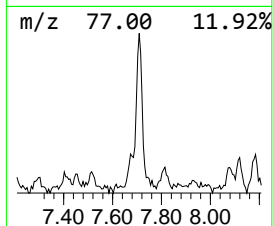
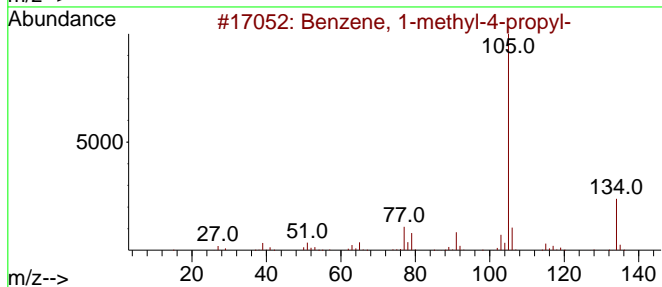
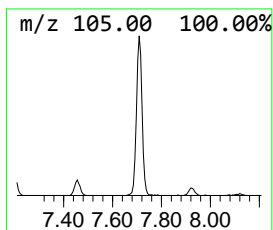
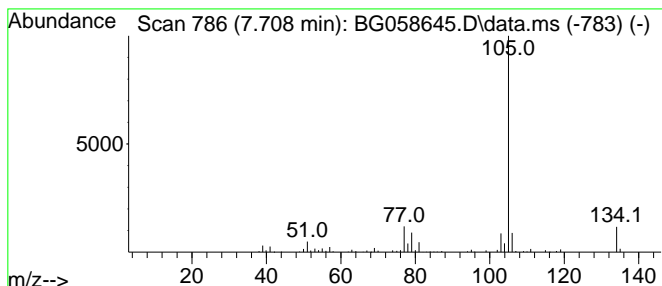
TIC Library : C:\Database\NIST20.L  
 TIC Integration Parameters: LSCINT.P

\*\*\*\*\*  
 Peak Number 10 Benzene, 1-methyl-4-propyl- Concentration Rank 8

R.T.	EstConc	Area	Relative to ISTD	R.T.
7.708	19.88 ng	223596	1,4-Dichlorobenzene-d4	7.808

Hit#	of 5	Tentative ID	MW	MolForm	CAS#	Qual
1		Benzene, 1-methyl-4-propyl-	134	C10H14	001074-55-1	90
2		Benzeneacetaldehyde, .alpha.-met...	134	C9H10O	000093-53-8	86
3		Benzeneacetaldehyde, 4-methyl-	134	C9H10O	000104-09-6	80
4		Oxirane, 2-methyl-2-phenyl-	134	C9H10O	002085-88-3	74
5		Benzene, (1-methylpropyl)-	134	C10H14	000135-98-8	72



Data Path : Z:\svoasrv\HPCHEM1\BNA\_G\Data\BG080823\  
 Data File : BG058645.D  
 Acq On : 8 Aug 2023 16:28  
 Operator : MA/JU  
 Sample : 03903-12  
 Misc :  
 ALS Vial : 13 Sample Multiplier: 1

Instrument :  
 BNA\_G  
 ClientSampleId :  
 MW-01W

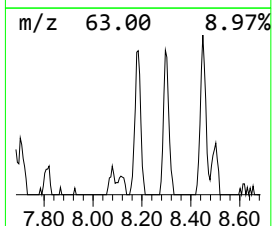
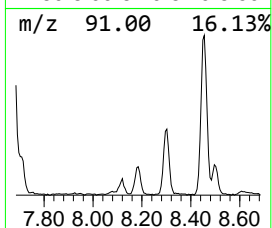
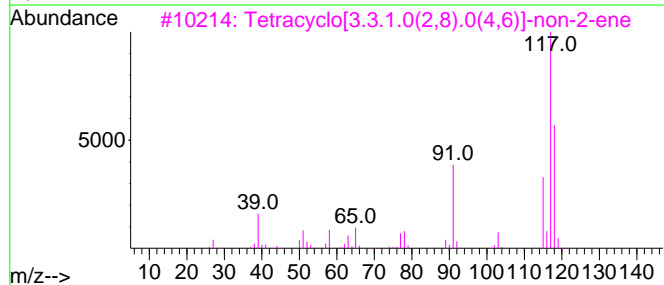
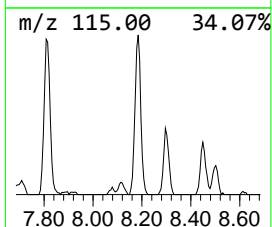
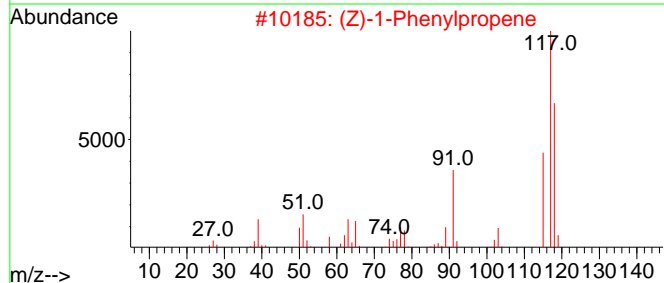
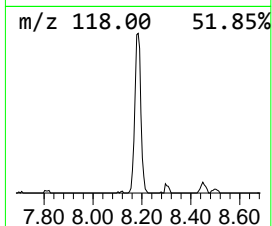
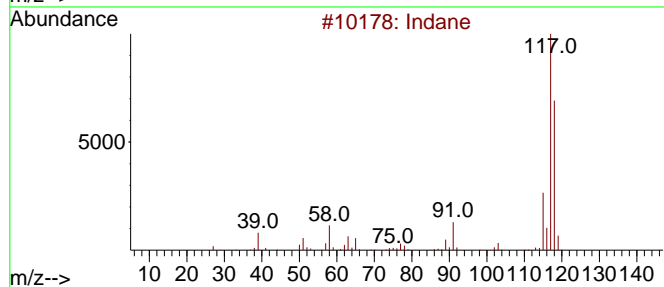
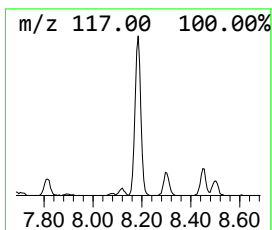
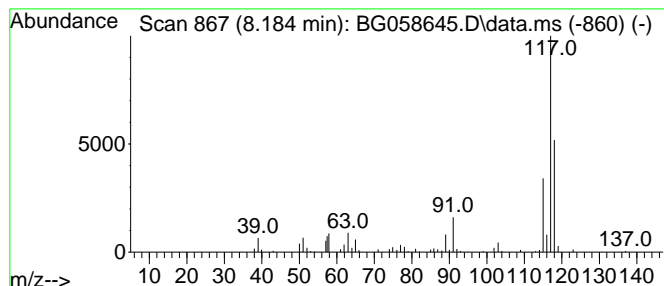
Quant Method : Z:\svoasrv\HPCHEM1\BNA\_G\Methods\8270-BG072823.M  
 Quant Title : ASP BNA STANDARDS FOR 5 POINT CALIBRATION

TIC Library : C:\Database\NIST20.L  
 TIC Integration Parameters: LSCINT.P

\*\*\*\*\*  
 Peak Number 11 Indane Concentration Rank 10

R.T.	EstConc	Area	Relative to ISTD	R.T.
8.184	18.30 ng	205878	1,4-Dichlorobenzene-d4	7.808

Hit#	of 5	Tentative ID	MW	MolForm	CAS#	Qual
1		Indane	118	C9H10	000496-11-7	74
2		(Z)-1-Phenylpropene	118	C9H10	000766-90-5	68
3		Tetracyclo[3.3.1.0(2,8).0(4,6)]-...	118	C9H10	1000191-13-7	64
4		Benzene, 2-propenyl-	118	C9H10	000300-57-2	64
5		Benzene, cyclopropyl-	118	C9H10	000873-49-4	59



Data Path : Z:\svoasrv\HPCHEM1\BNA\_G\Data\BG080823\  
 Data File : BG058645.D  
 Acq On : 8 Aug 2023 16:28  
 Operator : MA/JU  
 Sample : 03903-12  
 Misc :  
 ALS Vial : 13 Sample Multiplier: 1

Instrument :  
 BNA\_G  
 ClientSampleId :  
 MW-01W

Quant Method : Z:\svoasrv\HPCHEM1\BNA\_G\Methods\8270-BG072823.M  
 Quant Title : ASP BNA STANDARDS FOR 5 POINT CALIBRATION

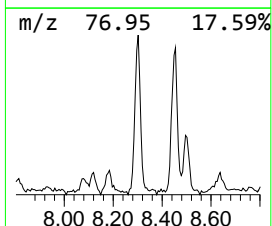
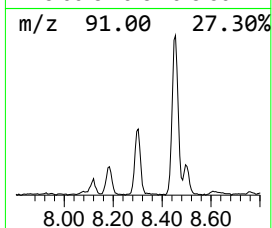
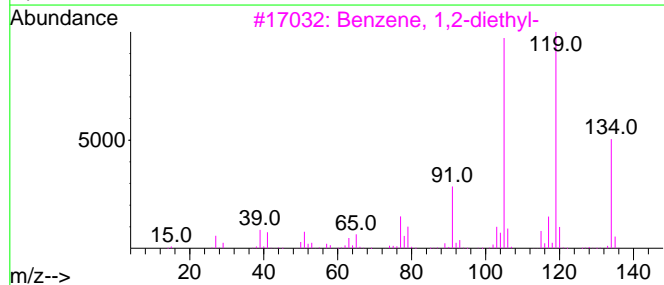
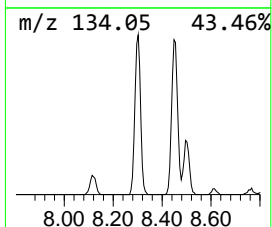
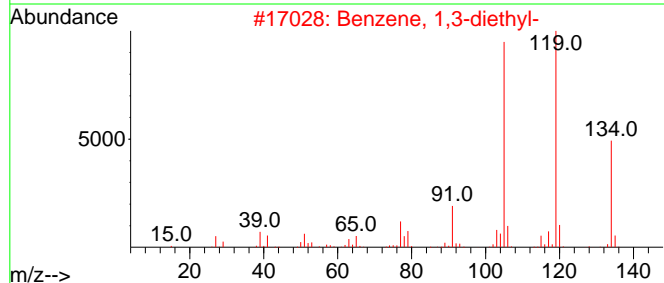
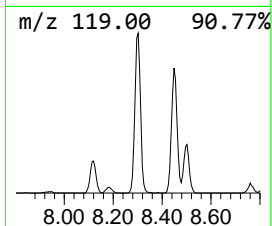
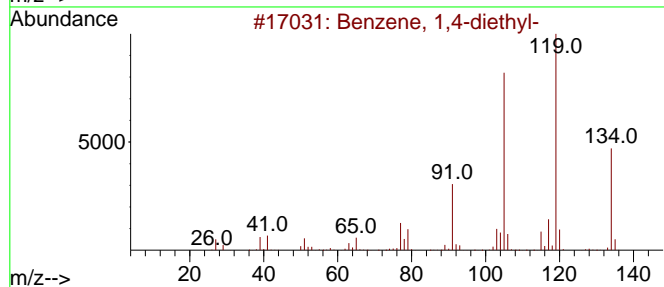
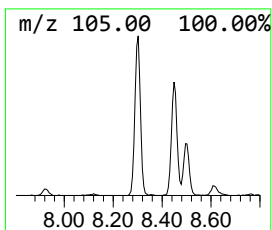
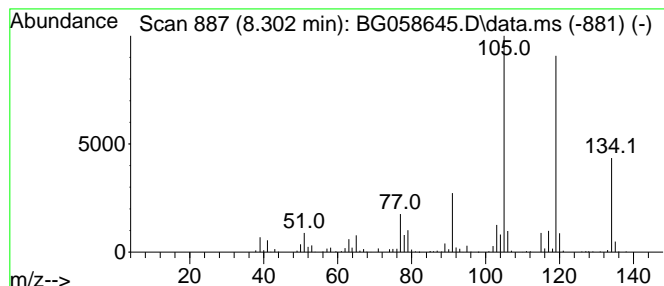
TIC Library : C:\Database\NIST20.L  
 TIC Integration Parameters: LSCINT.P

\*\*\*\*\*  
 Peak Number 12 Benzene, 1,4-diethyl- Concentration Rank 4

R.T.	EstConc	Area	Relative to ISTD	R.T.
8.302	40.84 ng	459467	1,4-Dichlorobenzene-d4	7.808

Hit#	of 5	Tentative ID	MW	MolForm	CAS#	Qual
1		Benzene, 1,4-diethyl-	134	C10H14	000105-05-5	95
2		Benzene, 1,3-diethyl-	134	C10H14	000141-93-5	94
3		Benzene, 1,2-diethyl-	134	C10H14	000135-01-3	94
4		Benzene, 1-ethyl-3,5-dimethyl-	134	C10H14	000934-74-7	90
5		o-Cymene	134	C10H14	000527-84-4	76



Data Path : Z:\svoasrv\HPCHEM1\BNA\_G\Data\BG080823\  
 Data File : BG058645.D  
 Acq On : 8 Aug 2023 16:28  
 Operator : MA/JU  
 Sample : 03903-12  
 Misc :  
 ALS Vial : 13 Sample Multiplier: 1

Instrument :  
 BNA\_G  
 ClientSampleId :  
 MW-01W

Quant Method : Z:\svoasrv\HPCHEM1\BNA\_G\Methods\8270-BG072823.M  
 Quant Title : ASP BNA STANDARDS FOR 5 POINT CALIBRATION

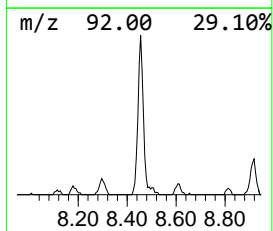
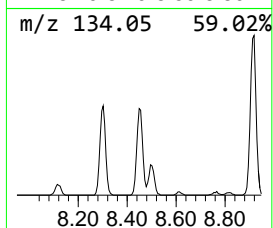
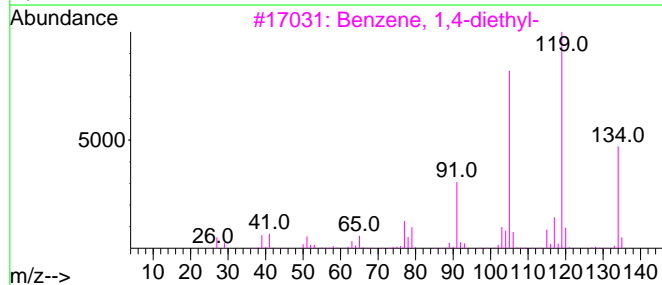
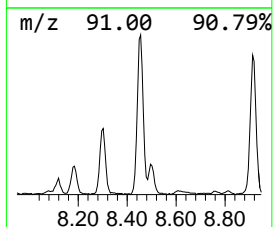
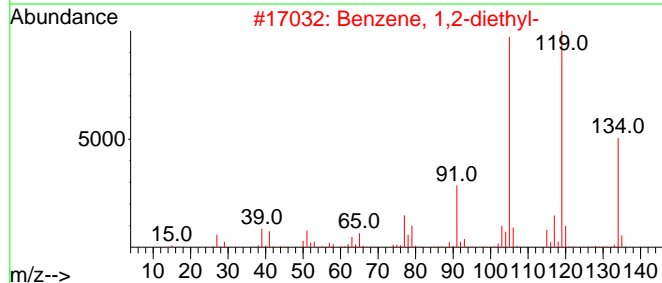
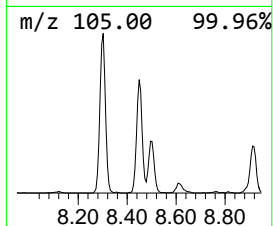
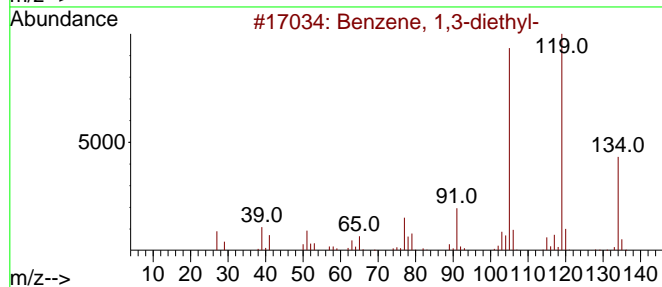
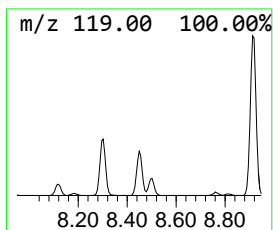
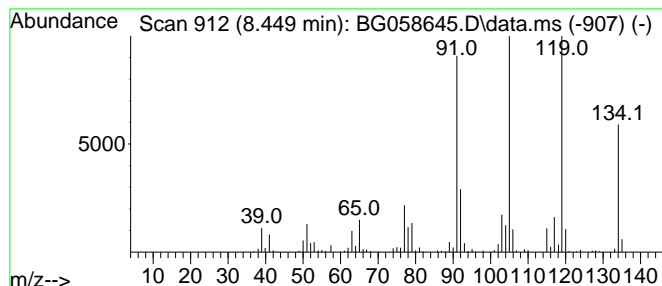
TIC Library : C:\Database\NIST20.L  
 TIC Integration Parameters: LSCINT.P

\*\*\*\*\*  
 Peak Number 13 Benzene, 1,3-diethyl- Concentration Rank 5

R.T.	EstConc	Area	Relative to ISTD	R.T.
8.449	40.05 ng	450514	1,4-Dichlorobenzene-d4	7.808

Hit#	of 5	Tentative ID	MW	MolForm	CAS#	Qual
1		Benzene, 1,3-diethyl-	134	C10H14	000141-93-5	96
2		Benzene, 1,2-diethyl-	134	C10H14	000135-01-3	96
3		Benzene, 1,4-diethyl-	134	C10H14	000105-05-5	94
4		Benzene, 1-ethyl-3,5-dimethyl-	134	C10H14	000934-74-7	90
5		Benzene, 1,2,3,4-tetramethyl-	134	C10H14	000488-23-3	90





Data Path : Z:\svoasrv\HPCHEM1\BNA\_G\Data\BG080823\  
 Data File : BG058645.D  
 Acq On : 8 Aug 2023 16:28  
 Operator : MA/JU  
 Sample : 03903-12  
 Misc :  
 ALS Vial : 13 Sample Multiplier: 1

Instrument :  
 BNA\_G  
 ClientSampleId :  
 MW-01W

Quant Method : Z:\svoasrv\HPCHEM1\BNA\_G\Methods\8270-BG072823.M  
 Quant Title : ASP BNA STANDARDS FOR 5 POINT CALIBRATION

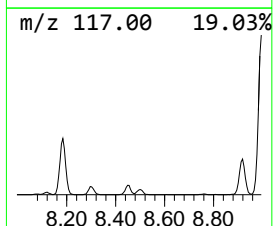
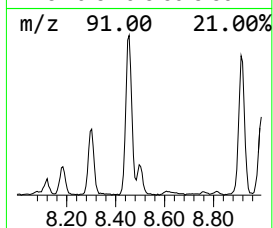
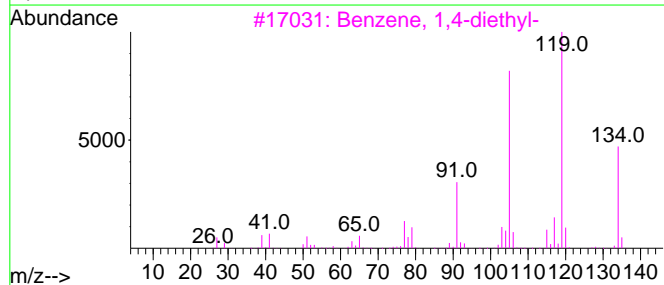
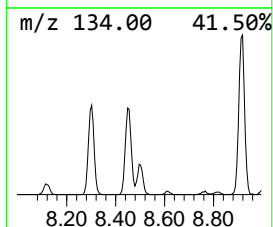
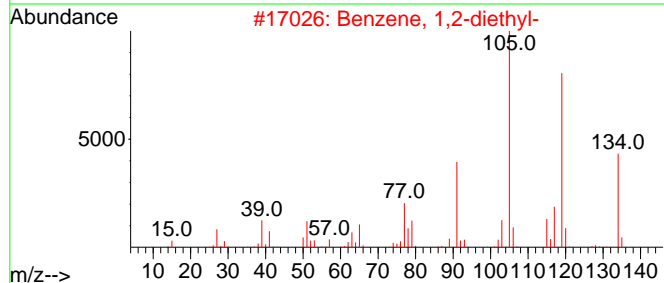
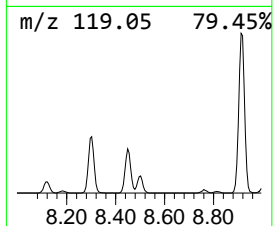
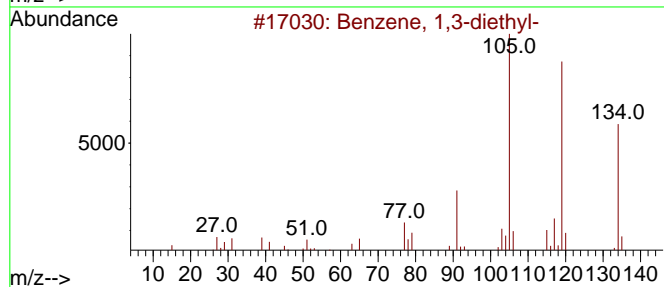
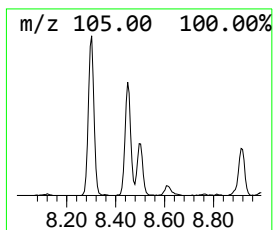
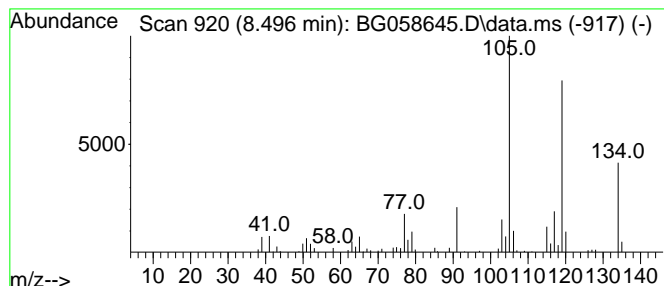
TIC Library : C:\Database\NIST20.L  
 TIC Integration Parameters: LSCINT.P

\*\*\*\*\*  
 Peak Number 14 Benzene, 1,2-diethyl- Concentration Rank 19

R.T.	EstConc	Area	Relative to ISTD	R.T.
8.496	12.97 ng	145874	1,4-Dichlorobenzene-d4	7.808

Hit#	of 5	Tentative ID	MW	MolForm	CAS#	Qual
1		Benzene, 1,3-diethyl-	134	C10H14	000141-93-5	94
2		Benzene, 1,2-diethyl-	134	C10H14	000135-01-3	91
3		Benzene, 1,4-diethyl-	134	C10H14	000105-05-5	90
4		1,3,8-p-Menthatriene	134	C10H14	018368-95-1	90
5		2,6-Dimethyl-1,3,5,7-octatetraen...	134	C10H14	000460-01-5	86



Data Path : Z:\svoasrv\HPCHEM1\BNA\_G\Data\BG080823\  
 Data File : BG058645.D  
 Acq On : 8 Aug 2023 16:28  
 Operator : MA/JU  
 Sample : 03903-12  
 Misc :  
 ALS Vial : 13 Sample Multiplier: 1

Instrument :  
 BNA\_G  
 ClientSampleId :  
 MW-01W

Quant Method : Z:\svoasrv\HPCHEM1\BNA\_G\Methods\8270-BG072823.M  
 Quant Title : ASP BNA STANDARDS FOR 5 POINT CALIBRATION

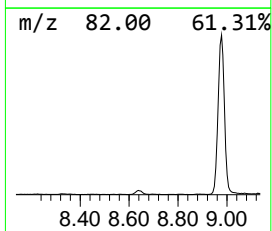
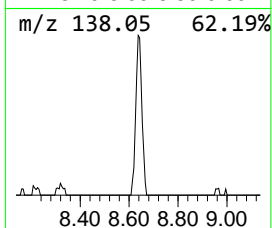
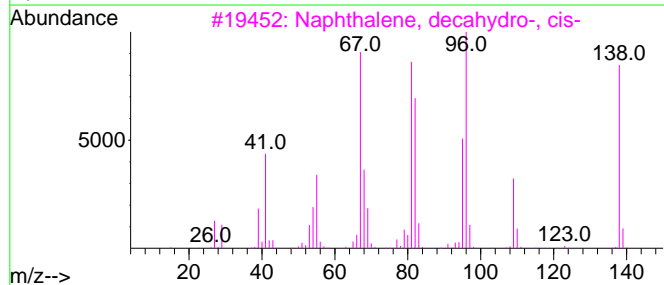
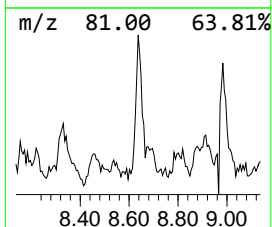
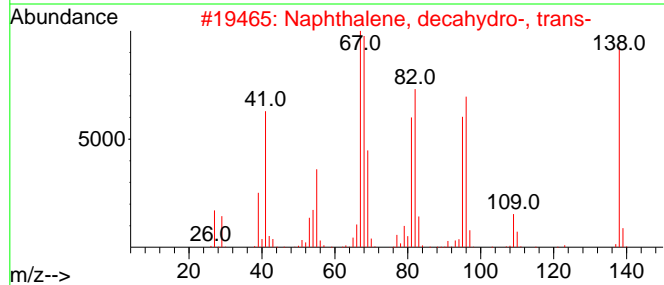
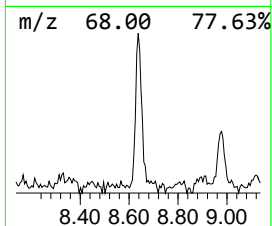
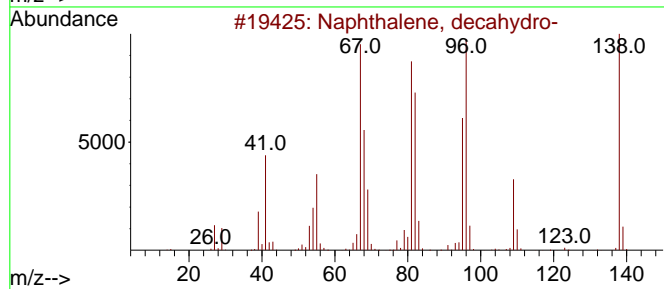
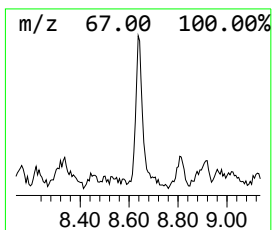
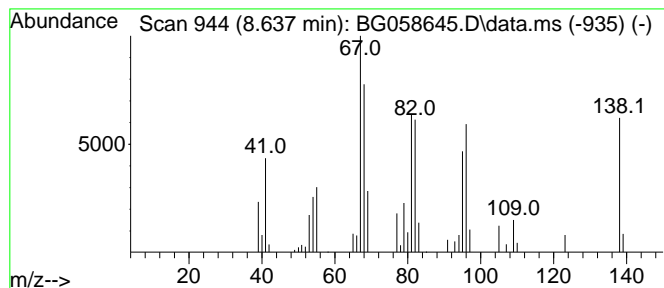
TIC Library : C:\Database\NIST20.L  
 TIC Integration Parameters: LSCINT.P

\*\*\*\*\*  
 Peak Number 15 Naphthalene, decahydro- Concentration Rank 14

R.T.	EstConc	Area	Relative to ISTD	R.T.
8.637	14.96 ng	168256	1,4-Dichlorobenzene-d4	7.808

Hit#	of	5	Tentative ID	MW	MolForm	CAS#	Qual
1			Naphthalene, decahydro-	138	C10H18	000091-17-8	96
2			Naphthalene, decahydro-, trans-	138	C10H18	000493-02-7	93
3			Naphthalene, decahydro-, cis-	138	C10H18	000493-01-6	86
4			1,1'-Bicyclopentyl	138	C10H18	001636-39-1	81
5			Bicyclo[3.1.0]hexan-2-one, 5-(1-...	138	C9H14O	000513-20-2	70



Data Path : Z:\svoasrv\HPCHEM1\BNA\_G\Data\BG080823\  
 Data File : BG058645.D  
 Acq On : 8 Aug 2023 16:28  
 Operator : MA/JU  
 Sample : 03903-12  
 Misc :  
 ALS Vial : 13 Sample Multiplier: 1

Instrument :  
 BNA\_G  
 ClientSampleId :  
 MW-01W

Quant Method : Z:\svoasrv\HPCHEM1\BNA\_G\Methods\8270-BG072823.M  
 Quant Title : ASP BNA STANDARDS FOR 5 POINT CALIBRATION

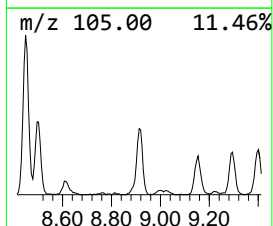
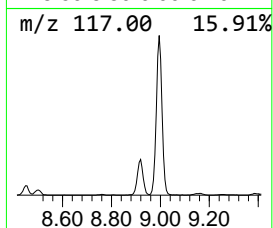
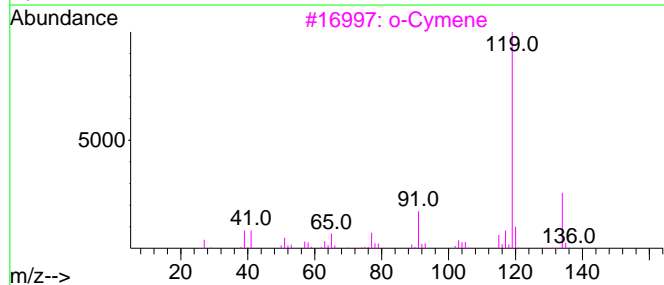
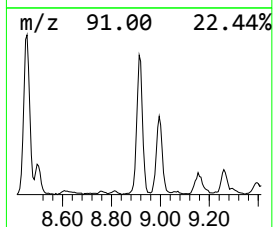
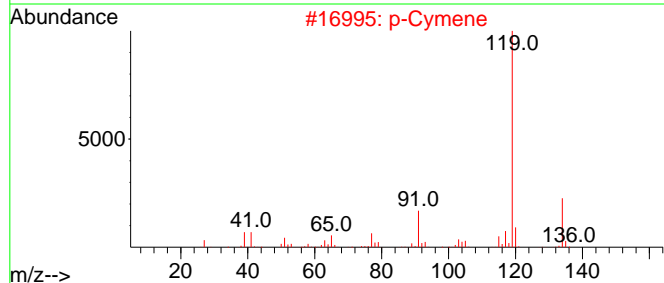
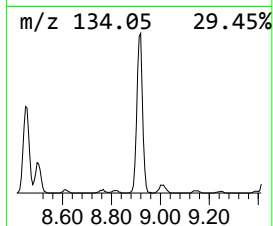
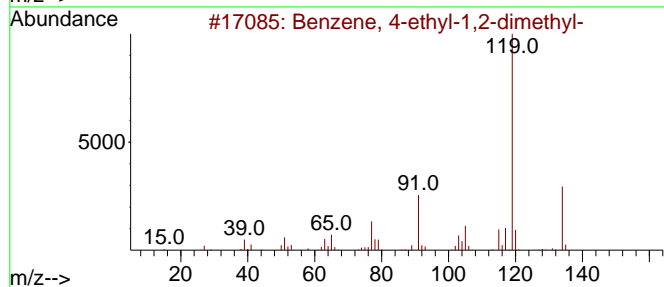
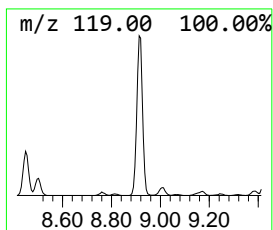
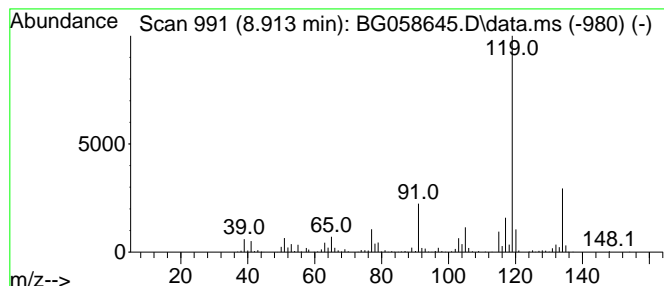
TIC Library : C:\Database\NIST20.L  
 TIC Integration Parameters: LSCINT.P

\*\*\*\*\*  
 Peak Number 16 Benzene, 4-ethyl-1,2-dimethyl- Concentration Rank 3

R.T.	EstConc	Area	Relative to ISTD	R.T.
8.913	78.16 ng	879279	1,4-Dichlorobenzene-d4	7.808

Hit#	of 5	Tentative ID	MW	MolForm	CAS#	Qual
1		Benzene, 4-ethyl-1,2-dimethyl-	134	C10H14	000934-80-5	96
2		p-Cymene	134	C10H14	000099-87-6	95
3		o-Cymene	134	C10H14	000527-84-4	95
4		Benzene, 1-ethyl-2,3-dimethyl-	134	C10H14	000933-98-2	93
5		Benzene, 1-ethyl-2,4-dimethyl-	134	C10H14	000874-41-9	93



Data Path : Z:\svoasrv\HPCHEM1\BNA\_G\Data\BG080823\  
 Data File : BG058645.D  
 Acq On : 8 Aug 2023 16:28  
 Operator : MA/JU  
 Sample : 03903-12  
 Misc :  
 ALS Vial : 13 Sample Multiplier: 1

Instrument :  
 BNA\_G  
 ClientSampleId :  
 MW-01W

Quant Method : Z:\svoasrv\HPCHEM1\BNA\_G\Methods\8270-BG072823.M  
 Quant Title : ASP BNA STANDARDS FOR 5 POINT CALIBRATION

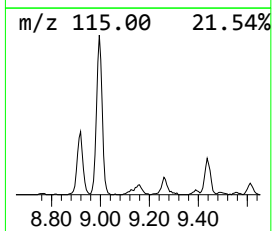
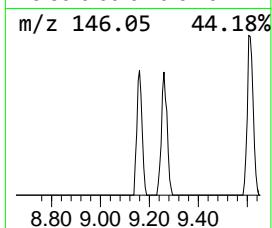
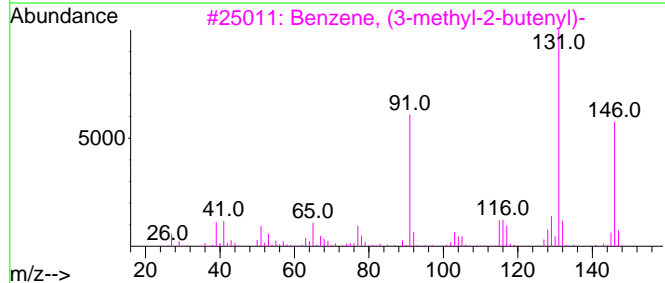
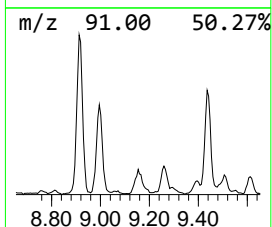
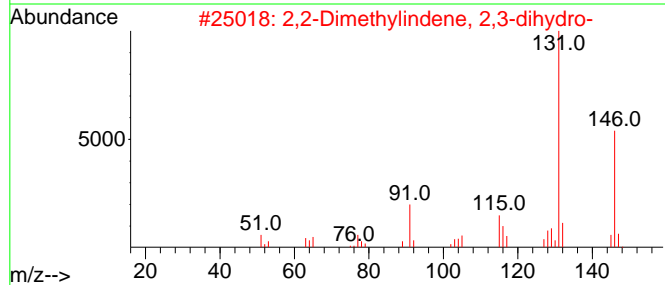
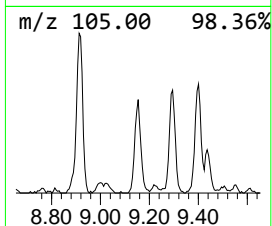
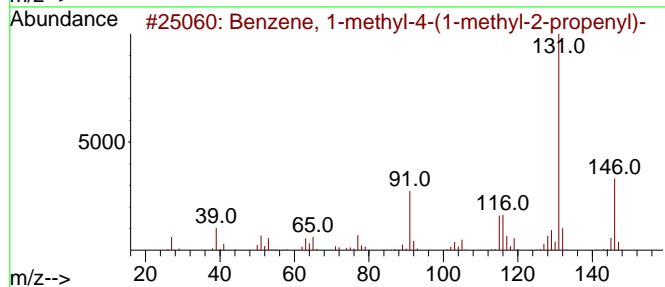
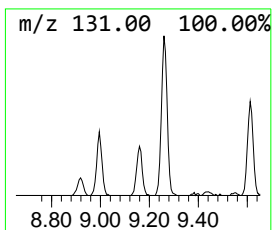
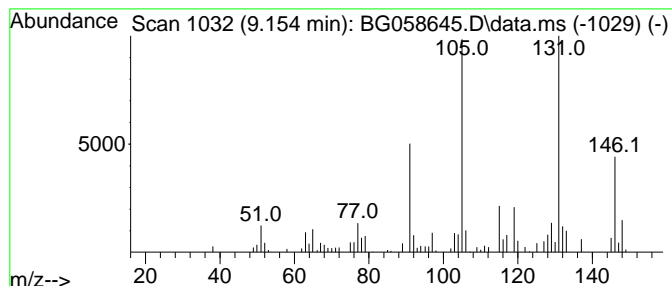
TIC Library : C:\Database\NIST20.L  
 TIC Integration Parameters: LSCINT.P

\*\*\*\*\*  
 Peak Number 17 Benzene, 1-methyl-4-(1-meth... Concentration Rank 9

R.T.	EstConc	Area	Relative to ISTD	R.T.
9.154	19.02 ng	213944	1,4-Dichlorobenzene-d4	7.808

Hit#	of 5	Tentative ID	MW	MolForm	CAS#	Qual
1		Benzene, 1-methyl-4-(1-methyl-2-...	146	C11H14	097664-18-1	86
2		2,2-Dimethylindene, 2,3-dihydro-	146	C11H14	020836-11-7	86
3		Benzene, (3-methyl-2-butenyl)-	146	C11H14	004489-84-3	83
4		Benzene, 1-methyl-2-(1-methyl-2-...	146	C11H14	097664-19-2	70
5		Benzene, (2-methyl-1-butenyl)-	146	C11H14	056253-64-6	70



Data Path : Z:\svoasrv\HPCHEM1\BNA\_G\Data\BG080823\  
 Data File : BG058645.D  
 Acq On : 8 Aug 2023 16:28  
 Operator : MA/JU  
 Sample : 03903-12  
 Misc :  
 ALS Vial : 13 Sample Multiplier: 1

Instrument :  
 BNA\_G  
 ClientSampleId :  
 MW-01W

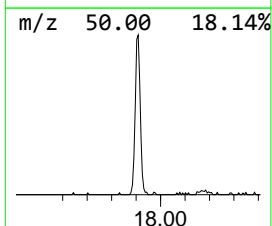
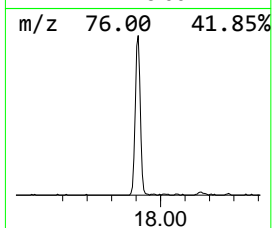
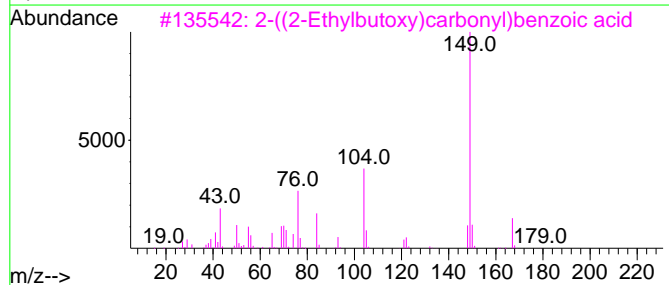
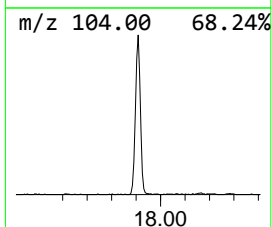
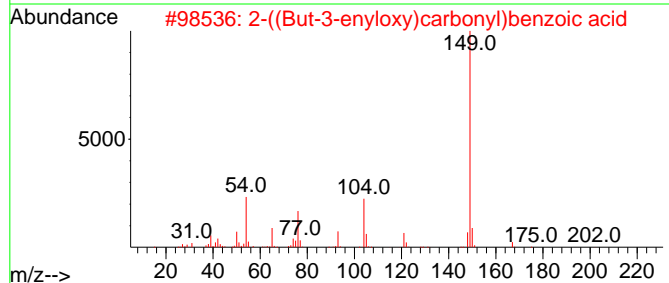
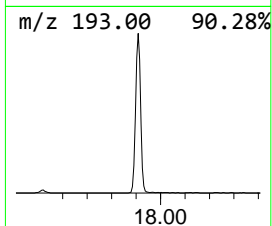
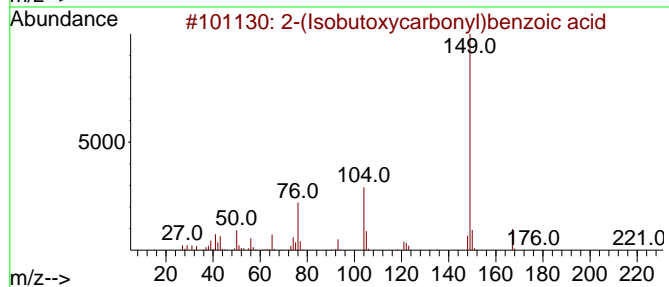
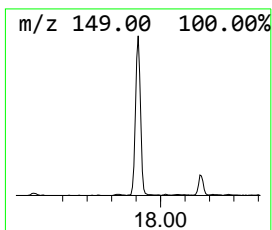
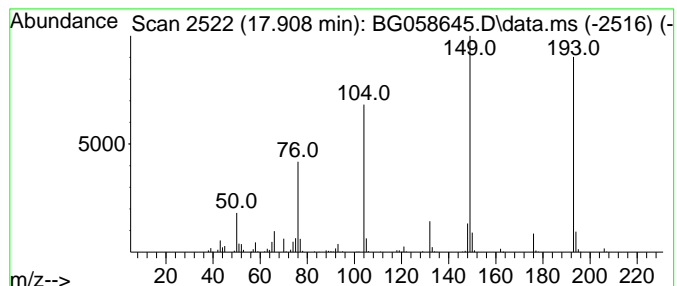
Quant Method : Z:\svoasrv\HPCHEM1\BNA\_G\Methods\8270-BG072823.M  
 Quant Title : ASP BNA STANDARDS FOR 5 POINT CALIBRATION

TIC Library : C:\Database\NIST20.L  
 TIC Integration Parameters: LSCINT.P

\*\*\*\*\*  
 Peak Number 18 unknown17.908 Concentration Rank 18

R.T.	EstConc	Area	Relative to ISTD	R.T.
17.908	13.00 ng	517151	Phenanthrene-d10	17.203

Hit#	of 5	Tentative ID	MW	MolForm	CAS#	Qual
1		2-(Isobutoxycarbonyl)benzoic acid	222	C12H14O4	030833-53-5	47
2		2-((But-3-enyloxy)carbonyl)benzo...	220	C12H12O4	113793-34-3	38
3		2-((2-Ethylbutoxy)carbonyl)benzo...	250	C14H18O4	091401-46-6	37
4		2-(2-Carboxyvinyl)pyridine, trans	149	C8H7NO2	007340-22-9	35
5		Furo[3,2-b]pyridine, 2-methyl-, ...	149	C8H7NO2	069022-83-9	27



Data Path : Z:\svoasrv\HPCHEM1\BNA\_G\Data\BG080823\  
 Data File : BG058645.D  
 Acq On : 8 Aug 2023 16:28  
 Operator : MA/JU  
 Sample : 03903-12  
 Misc :  
 ALS Vial : 13 Sample Multiplier: 1

Instrument :  
 BNA\_G  
 ClientSampleId :  
 MW-01W

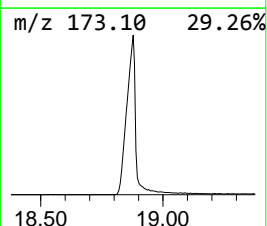
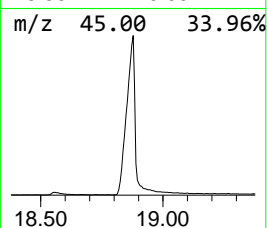
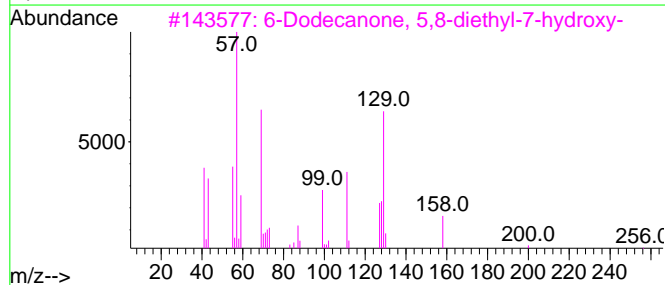
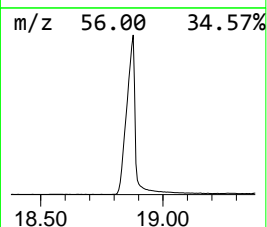
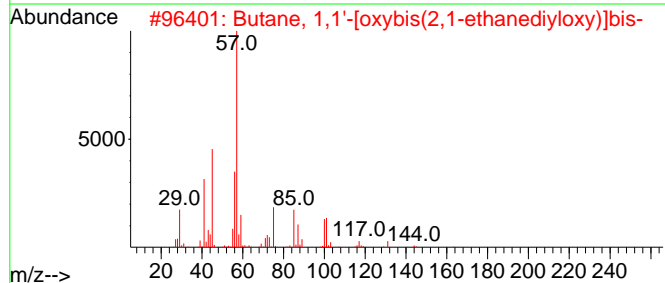
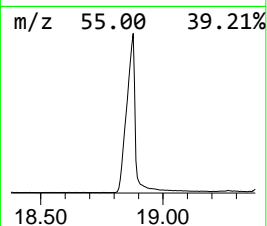
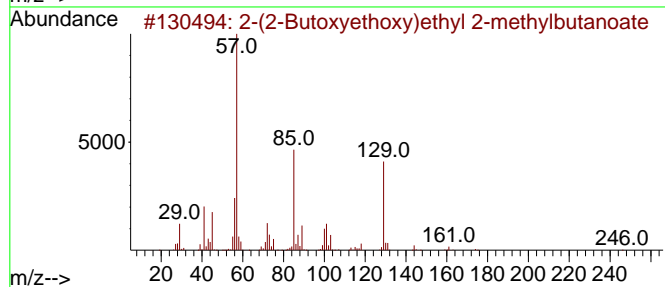
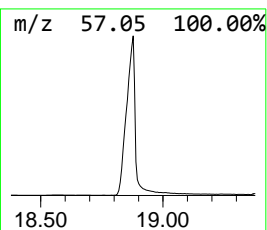
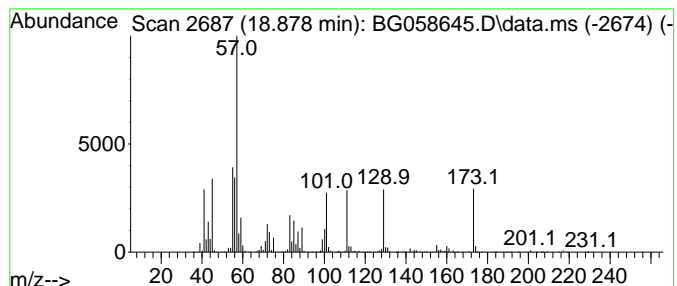
Quant Method : Z:\svoasrv\HPCHEM1\BNA\_G\Methods\8270-BG072823.M  
 Quant Title : ASP BNA STANDARDS FOR 5 POINT CALIBRATION

TIC Library : C:\Database\NIST20.L  
 TIC Integration Parameters: LSCINT.P

\*\*\*\*\*  
 Peak Number 19 unknown18.878 Concentration Rank 1

R.T.	EstConc	Area	Relative to ISTD	R.T.
18.878	261.42 ng	10401800	Phenanthrene-d10	17.203

Hit#	of 5	Tentative ID	MW	MolForm	CAS#	Qual
1		2-(2-Butoxyethoxy)ethyl 2-methyl...	246	C13H26O4	1000366-96-6	32
2		Butane, 1,1'-[oxybis(2,1-ethaned...	218	C12H26O3	000112-73-2	22
3		6-Dodecanone, 5,8-diethyl-7-hydr...	256	C16H32O2	031814-59-2	17
4		2-(2-(2-Butoxyethoxy)ethoxy)ethy...	290	C15H30O5	1000366-97-3	16
5		Ethanol, 1-(2-butoxyethoxy)-	162	C8H18O3	054446-78-5	16



Data Path : Z:\svoasrv\HPCHEM1\BNA\_G\Data\BG080823\  
 Data File : BG058645.D  
 Acq On : 8 Aug 2023 16:28  
 Operator : MA/JU  
 Sample : 03903-12  
 Misc :  
 ALS Vial : 13 Sample Multiplier: 1

Instrument :  
 BNA\_G  
 ClientSampleId :  
 MW-01W

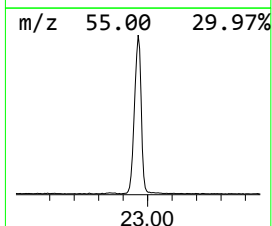
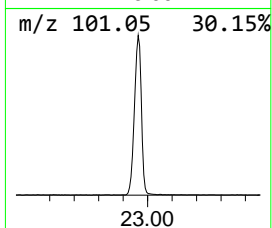
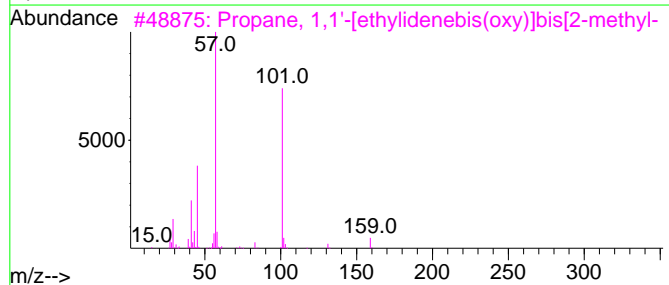
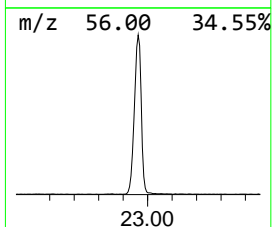
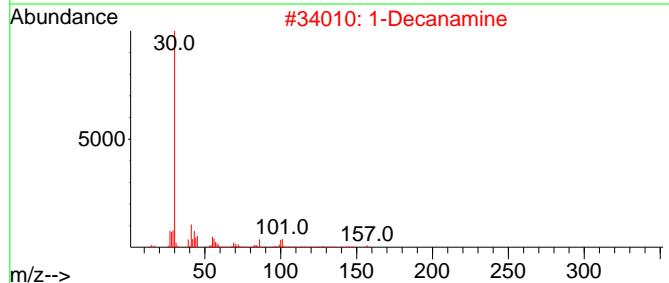
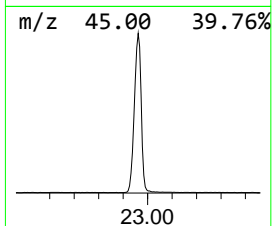
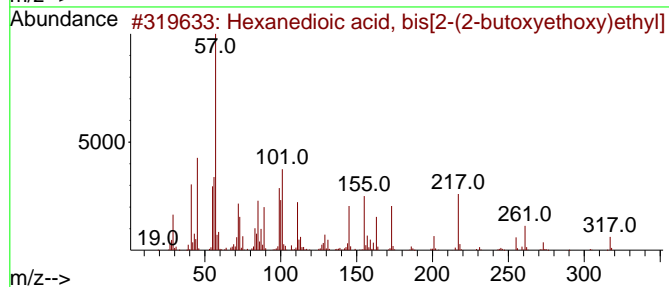
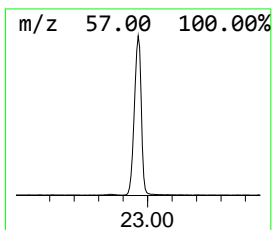
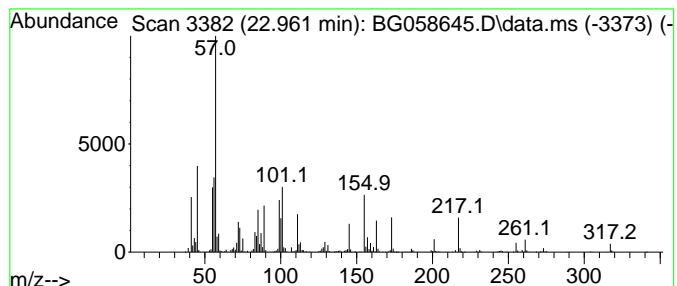
Quant Method : Z:\svoasrv\HPCHEM1\BNA\_G\Methods\8270-BG072823.M  
 Quant Title : ASP BNA STANDARDS FOR 5 POINT CALIBRATION

TIC Library : C:\Database\NIST20.L  
 TIC Integration Parameters: LSCINT.P

\*\*\*\*\*  
 Peak Number 20 Hexanedioic acid, bis[2-(2-... Concentration Rank 2

R.T.	EstConc	Area	Relative to ISTD	R.T.
22.961	158.16 ng	6754350	Chrysene-d12	21.445

Hit#	of 5	Tentative ID	MW	MolForm	CAS#	Qual
1		Hexanedioic acid, bis[2-(2-butox...	434	C22H42O8	000141-17-3	87
2		1-Decanamine	157	C10H23N	002016-57-1	22
3		Propane, 1,1'-[ethylidenebis(oxy...	174	C10H22O2	005669-09-0	22
4		Butane, 1,1'-[oxybis(2,1-ethaned...	218	C12H26O3	000112-73-2	17
5		3,6,9,12-Tetraoxahexadecan-1-ol,...	364	C18H40O5Si	1000352-13-7	17



Data Path : Z:\svoasrv\HPCHEM1\BNA\_G\Data\BG080823\  
 Data File : BG058645.D  
 Acq On : 8 Aug 2023 16:28  
 Operator : MA/JU  
 Sample : 03903-12  
 Misc :  
 ALS Vial : 13 Sample Multiplier: 1

Instrument :  
 BNA\_G  
 ClientSampleId :  
 MW-01W

Quant Method : Z:\svoasrv\HPCHEM1\BNA\_G\Methods\8270-BG072823.M  
 Quant Title : ASP BNA STANDARDS FOR 5 POINT CALIBRATION

TIC Library : C:\Database\NIST0.L  
 TIC Integration Parameters: LSCINT.P

TIC Top Hit name	RT	EstConc	Units	Response	--Internal Standard--			
					#	RT	Resp	Conc
Cyclohexane, 1,...	4.166	13.7	ng	154394	1	7.808	224986	20.0
Cyclohexane, 1,...	4.448	13.4	ng	151190	1	7.808	224986	20.0
Pentalene, octa...	5.505	12.9	ng	145221	1	7.808	224986	20.0
unknown5.676	5.676	14.7	ng	164866	1	7.808	224986	20.0
1-Ethyl-4-methy...	5.758	15.0	ng	169118	1	7.808	224986	20.0
Cyclohexane, 1,...	6.075	15.5	ng	174610	1	7.808	224986	20.0
unknown6.310	6.310	31.1	ng	349660	1	7.808	224986	20.0
Cyclohexane, pr...	6.439	27.0	ng	303780	1	7.808	224986	20.0
unknown6.792	6.792	17.6	ng	198410	1	7.808	224986	20.0
Benzene, 1-meth...	7.708	19.9	ng	223596	1	7.808	224986	20.0
Indane	8.184	18.3	ng	205878	1	7.808	224986	20.0
Benzene, 1,4-di...	8.302	40.8	ng	459467	1	7.808	224986	20.0
Benzene, 1,3-di...	8.449	40.0	ng	450514	1	7.808	224986	20.0
Benzene, 1,2-di...	8.496	13.0	ng	145874	1	7.808	224986	20.0
Naphthalene, de...	8.637	15.0	ng	168256	1	7.808	224986	20.0
Benzene, 4-ethy...	8.913	78.2	ng	879279	1	7.808	224986	20.0
Benzene, 1-meth...	9.154	19.0	ng	213944	1	7.808	224986	20.0
unknown17.908	17.908	13.0	ng	517151	4	17.203	795799	20.0
unknown18.878	18.878	261.4	ng	10401800	4	17.203	795799	20.0
Hexanedioic aci...	22.961	158.2	ng	6754350	5	21.445	854101	20.0