

Data Path : Z:\svoasrv\HPCHEM1\BNA_G\Data\BG082522\
 Data File : BG054744.D
 Acq On : 25 Aug 2022 20:31
 Operator : CG/JU
 Sample : PB147245BS
 Misc :
 ALS Vial : 13 Sample Multiplier: 1

Instrument :
 BNA_G
 ClientSampleId :
 PB147245BS

Quant Time: Aug 26 05:18:37 2022
 Quant Method : Z:\svoasrv\HPCHEM1\BNA_G\Methods\8270-BG082522.M
 Quant Title : ASP BNA STANDARDS FOR 5 POINT CALIBRATION
 QLast Update : Thu Aug 25 17:50:55 2022
 Response via : Initial Calibration

Compound	R.T.	QIon	Response	Conc	Units	Dev(Min)	
Internal Standards							
1) 1,4-Dichlorobenzene-d4	8.148	152	50134	20.000	ng	0.00	
21) Naphthalene-d8	10.979	136	214845	20.000	ng	0.00	
39) Acenaphthene-d10	14.781	164	141991	20.000	ng	0.00	
64) Phenanthrene-d10	17.531	188	314720	20.000	ng	0.00	
76) Chrysene-d12	21.826	240	286561	20.000	ng	0.00	
86) Perylene-d12	25.186	264	309701	20.000	ng	-0.01	
System Monitoring Compounds							
5) 2-Fluorophenol	5.686	112	442931	153.848	ng	0.00	
7) Phenol-d6	7.296	99	573951	145.773	ng	0.00	
23) Nitrobenzene-d5	9.323	82	350263	85.585	ng	0.00	
42) 2,4,6-Tribromophenol	16.267	330	238025	134.154	ng	0.00	
45) 2-Fluorobiphenyl	13.412	172	786473	83.250	ng	0.00	
79) Terphenyl-d14	20.128	244	1310387	90.605	ng	0.00	
Target Compounds							
2) 1,4-Dioxane	3.529	88	49222	35.804	ng		99
3) Pyridine	3.941	79	138994	36.248	ng		98
4) n-Nitrosodimethylamine	3.853	42	78207	47.182	ng		100
6) Aniline	7.472	93	232419	49.683	ng		98
8) 2-Chlorophenol	7.713	128	165272	52.543	ng		99
9) Benzaldehyde	7.284	77	100482	38.938	ng		99
10) Phenol	7.325	94	203082	50.155	ng		99
11) bis(2-Chloroethyl)ether	7.560	93	159361	48.937	ng		98
12) 1,3-Dichlorobenzene	8.036	146	175475	48.206	ng		100
13) 1,4-Dichlorobenzene	8.189	146	177457	48.331	ng		98
14) 1,2-Dichlorobenzene	8.506	146	172398	49.518	ng		100
15) Benzyl Alcohol	8.388	79	146775	51.601	ng		97
16) 2,2'-oxybis(1-Chloropr...	8.676	45	249012	48.868	ng		99
17) 2-Methylphenol	8.588	107	141922	50.908	ng		98
18) Hexachloroethane	9.246	117	64521	48.460	ng		100
19) n-Nitroso-di-n-propyla...	8.958	70	127761	47.187	ng		98
20) 3+4-Methylphenols	8.917	107	189560	49.035	ng		98
22) Acetophenone	8.976	105	242764	45.165	ng	#	99
24) Nitrobenzene	9.370	77	180661	43.796	ng		96
25) Isophorone	9.887	82	351897	46.115	ng		99
26) 2-Nitrophenol	10.081	139	86104	47.254	ng		98
27) 2,4-Dimethylphenol	10.128	122	154230	53.422	ng		98
28) bis(2-Chloroethoxy)met...	10.368	93	212124	48.783	ng		99
29) 2,4-Dichlorophenol	10.615	162	153744	46.820	ng		99
30) 1,2,4-Trichlorobenzene	10.833	180	164448	43.822	ng		97
31) Naphthalene	11.026	128	495868	43.018	ng		100
32) Benzoic acid	10.263	122	78960	39.884	ng		96
33) 4-Chloroaniline	11.132	127	181319	38.584	ng		98
34) Hexachlorobutadiene	11.303	225	104785	43.582	ng		100
35) Caprolactam	11.902	113	26978	23.287	ng		96
36) 4-Chloro-3-methylphenol	12.237	107	170499	47.481	ng		97
37) 2-Methylnaphthalene	12.625	142	352075	43.579	ng		98
38) 1-Methylnaphthalene	12.842	142	334024	42.495	ng		98
40) 1,2,4,5-Tetrachloroben...	12.983	216	187392	43.781	ng		99
41) Hexachlorocyclopentadiene	12.960	237	259776	114.442	ng		98
43) 2,4,6-Trichlorophenol	13.218	196	129121	45.449	ng		99

Data Path : Z:\svoasrv\HPCHEM1\BNA_G\Data\BG082522\
 Data File : BG054744.D
 Acq On : 25 Aug 2022 20:31
 Operator : CG/JU
 Sample : PB147245BS
 Misc :
 ALS Vial : 13 Sample Multiplier: 1

Instrument :
 BNA_G
 ClientSampleId :
 PB147245BS

Quant Time: Aug 26 05:18:37 2022
 Quant Method : Z:\svoasrv\HPCHEM1\BNA_G\Methods\8270-BG082522.M
 Quant Title : ASP BNA STANDARDS FOR 5 POINT CALIBRATION
 QLast Update : Thu Aug 25 17:50:55 2022
 Response via : Initial Calibration

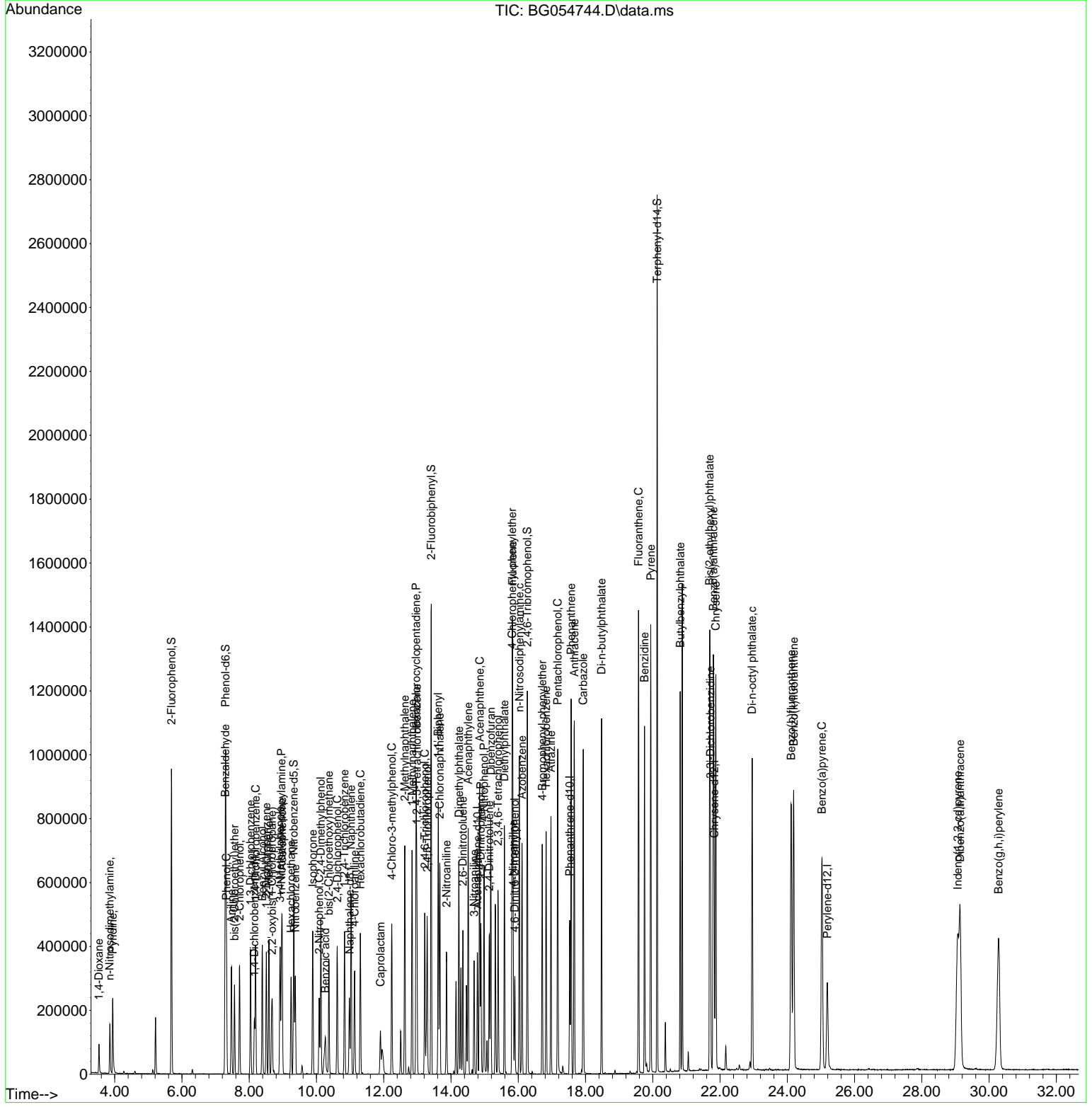
Compound	R.T.	QIon	Response	Conc	Units	Dev(Min)
44) 2,4,5-Trichlorophenol	13.289	196	141542	44.363	ng	99
46) 1,1'-Biphenyl	13.618	154	468497	44.431	ng	99
47) 2-Chloronaphthalene	13.665	162	344810	43.058	ng	100
48) 2-Nitroaniline	13.864	65	113580	45.257	ng	97
49) Acenaphthylene	14.511	152	574832	43.500	ng	100
50) Dimethylphthalate	14.235	163	472081	43.155	ng	99
51) 2,6-Dinitrotoluene	14.352	165	102347	45.742	ng	91
52) Acenaphthene	14.851	154	349030	41.118	ng	98
53) 3-Nitroaniline	14.687	138	97128	38.778	ng	97
54) 2,4-Dinitrophenol	14.887	184	108337	85.310	ng	91
55) Dibenzofuran	15.180	168	539488	43.252	ng	100
56) 4-Nitrophenol	14.981	139	184860	95.371	ng	97
57) 2,4-Dinitrotoluene	15.139	165	142710	46.112	ng	88
58) Fluorene	15.827	166	451741	42.991	ng	99
59) 2,3,4,6-Tetrachlorophenol	15.398	232	123420	42.912	ng	96
60) Diethylphthalate	15.586	149	474810	43.467	ng	98
61) 4-Chlorophenyl-phenyle...	15.815	204	230907	44.546	ng	98
62) 4-Nitroaniline	15.850	138	110880	43.359	ng	97
63) Azobenzene	16.109	77	444008	42.770	ng	99
65) 4,6-Dinitro-2-methylph...	15.897	198	74414	46.451	ng	98
66) n-Nitrosodiphenylamine	16.032	169	406128	44.748	ng	99
67) 4-Bromophenyl-phenylether	16.714	248	157454	45.568	ng	98
68) Hexachlorobenzene	16.826	284	173972	44.787	ng	99
69) Atrazine	16.972	200	150308	46.943	ng	99
70) Pentachlorophenol	17.172	266	206531	97.857	ng	99
71) Phenanthrene	17.572	178	726851	43.354	ng	99
72) Anthracene	17.666	178	737470	45.244	ng	100
73) Carbazole	17.930	167	691477	46.044	ng	99
74) Di-n-butylphthalate	18.477	149	834498	43.913	ng	100
75) Fluoranthene	19.575	202	895424	43.904	ng	100
77) Benzidine	19.752	184	640305	90.212	ng	98
78) Pyrene	19.940	202	891849	44.633	ng	99
80) Butylbenzylphthalate	20.815	149	365945	43.906	ng	98
81) Benzo(a)anthracene	21.802	228	853625	43.934	ng	99
82) 3,3'-Dichlorobenzidine	21.714	252	295653	43.401	ng	98
83) Chrysene	21.873	228	795843	42.839	ng	99
84) Bis(2-ethylhexyl)phtha...	21.690	149	542952	45.215	ng	100
85) Di-n-octyl phthalate	22.954	149	913069	44.837	ng	97
87) Indeno(1,2,3-cd)pyrene	29.064	276	1029316	43.779	ng	99
88) Benzo(b)fluoranthene	24.111	252	900586	46.355	ng	99
89) Benzo(k)fluoranthene	24.188	252	903933	46.232	ng	99
90) Benzo(a)pyrene	25.028	252	809354	48.761	ng	99
91) Dibenzo(a,h)anthracene	29.135	278	881518	46.021	ng	99
92) Benzo(g,h,i)perylene	30.280	276	885076	45.739	ng	99

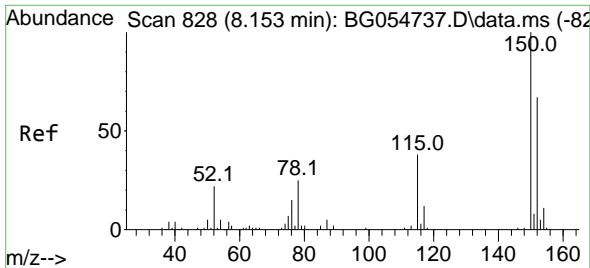
(#) = qualifier out of range (m) = manual integration (+) = signals summed

Data Path : Z:\svoasrv\HPCHEM1\BNA_G\Data\BG082522\
 Data File : BG054744.D
 Acq On : 25 Aug 2022 20:31
 Operator : CG/JU
 Sample : PB147245BS
 Misc :
 ALS Vial : 13 Sample Multiplier: 1

Instrument :
 BNA_G
 ClientSampleId :
 PB147245BS

Quant Time: Aug 26 05:18:37 2022
 Quant Method : Z:\svoasrv\HPCHEM1\BNA_G\Methods\8270-BG082522.M
 Quant Title : ASP BNA STANDARDS FOR 5 POINT CALIBRATION
 QLast Update : Thu Aug 25 17:50:55 2022
 Response via : Initial Calibration

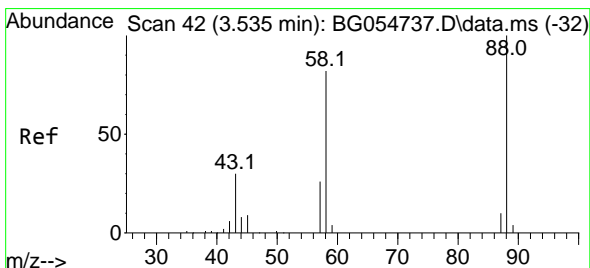
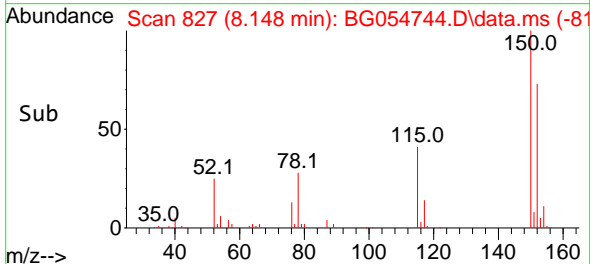
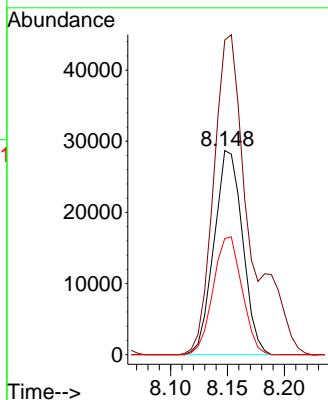
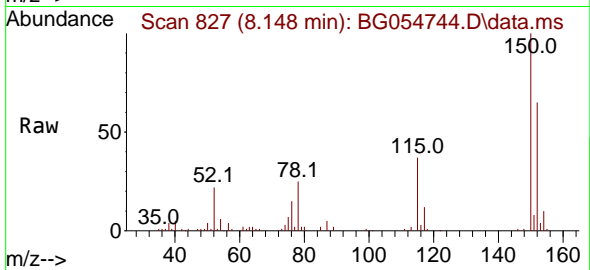




#1
 1,4-Dichlorobenzene-d4
 Concen: 20.000 ng
 RT: 8.148 min Scan# 81
 Delta R.T. -0.005 min
 Lab File: BG054744.D
 Acq: 25 Aug 2022 20:31

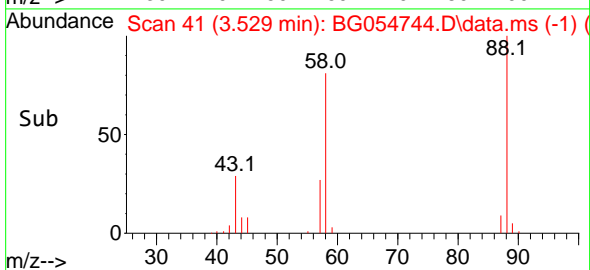
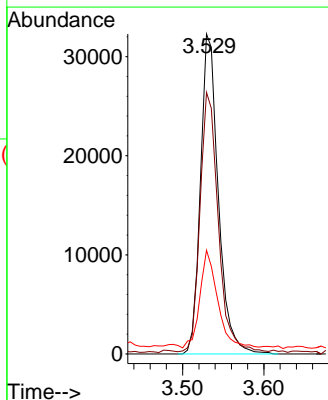
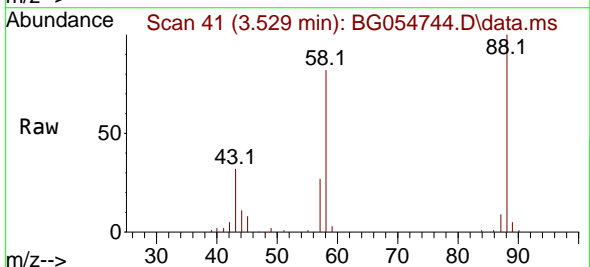
Instrument :
 BNA_G
 ClientSampleId :
 PB147245BS

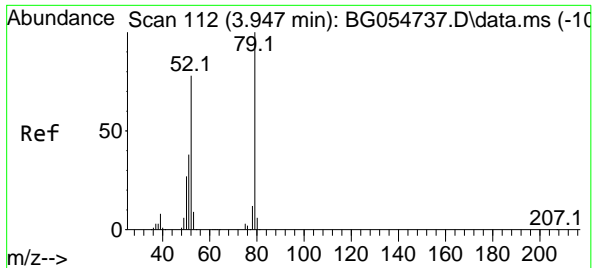
Tgt Ion:152 Resp: 50134
 Ion Ratio Lower Upper
 152 100
 150 154.1 125.2 187.8
 115 56.9 47.9 71.9



#2
 1,4-Dioxane
 Concen: 35.804 ng
 RT: 3.529 min Scan# 41
 Delta R.T. -0.006 min
 Lab File: BG054744.D
 Acq: 25 Aug 2022 20:31

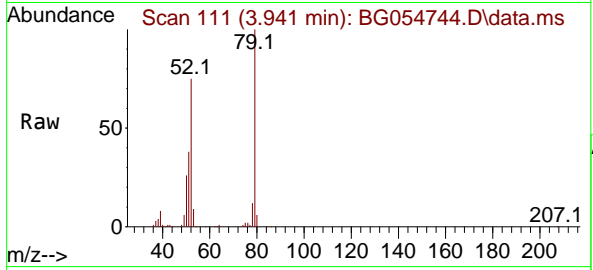
Tgt Ion: 88 Resp: 49222
 Ion Ratio Lower Upper
 88 100
 58 82.2 65.9 98.9
 43 30.3 22.7 34.1



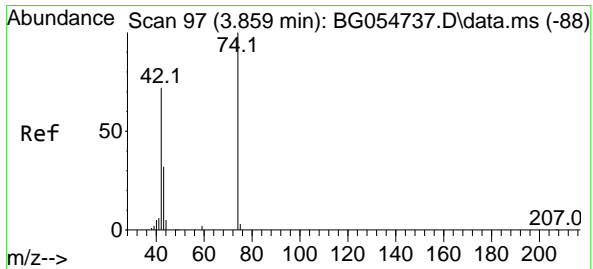
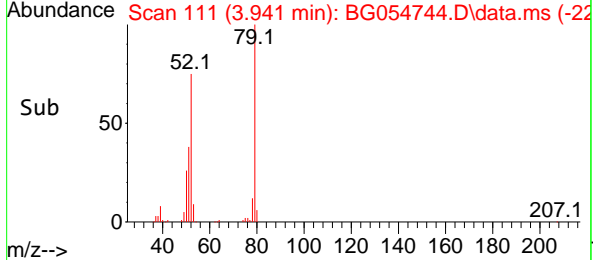
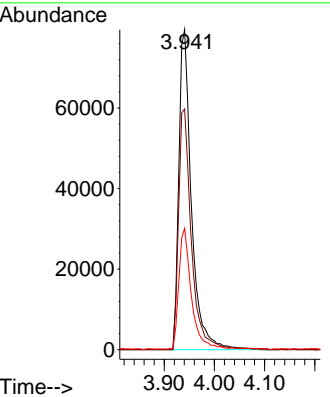


#3
 Pyridine
 Concen: 36.248 ng
 RT: 3.941 min Scan# 112
 Delta R.T. -0.006 min
 Lab File: BG054744.D
 Acq: 25 Aug 2022 20:31

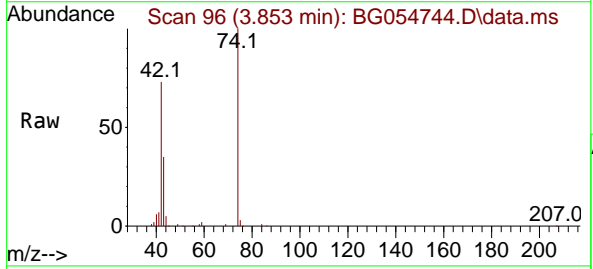
Instrument : BNA_G
 ClientSampleId : PB147245BS



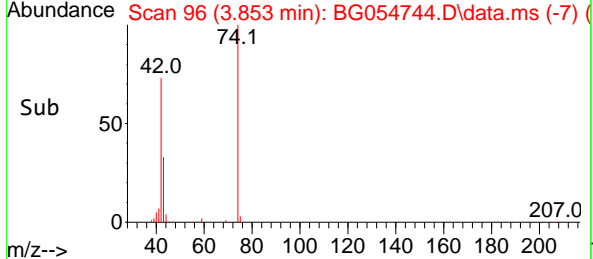
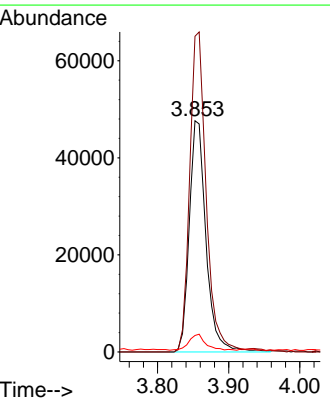
Tgt Ion: 79 Resp: 138994
 Ion Ratio Lower Upper
 79 100
 52 75.3 61.4 92.0
 51 37.9 31.4 47.0

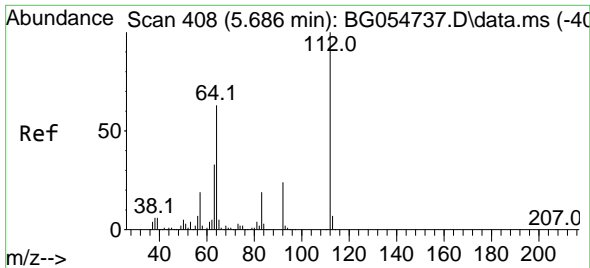


#4
 n-Nitrosodimethylamine
 Concen: 47.182 ng
 RT: 3.853 min Scan# 96
 Delta R.T. -0.006 min
 Lab File: BG054744.D
 Acq: 25 Aug 2022 20:31



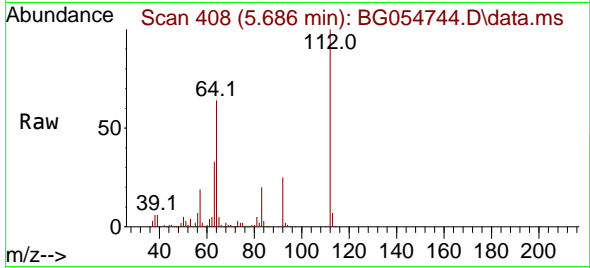
Tgt Ion: 42 Resp: 78207
 Ion Ratio Lower Upper
 42 100
 74 136.6 109.6 164.4
 44 7.1 5.5 8.3





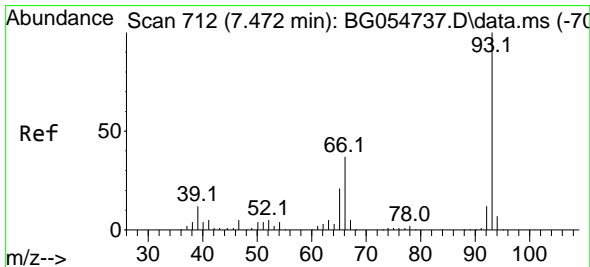
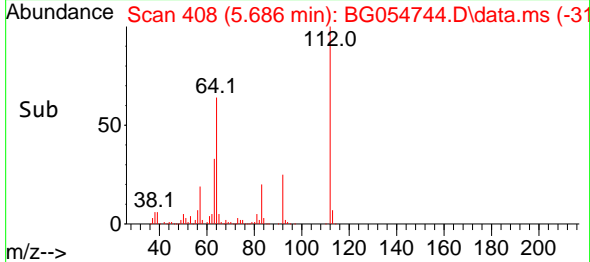
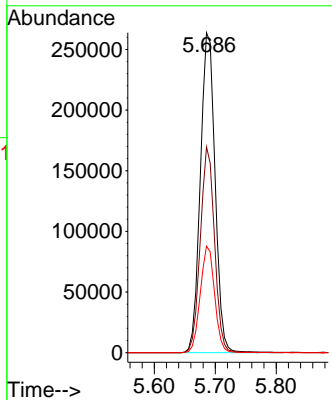
#5
 2-Fluorophenol
 Concen: 153.848 ng
 RT: 5.686 min Scan# 40
 Delta R.T. -0.000 min
 Lab File: BG054744.D
 Acq: 25 Aug 2022 20:31

Instrument :
 BNA_G
 ClientSampleId :
 PB147245BS



Tgt Ion: 112 Resp: 442931

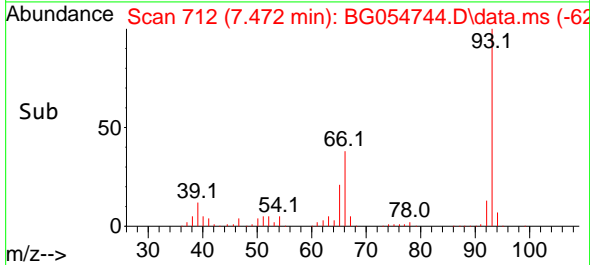
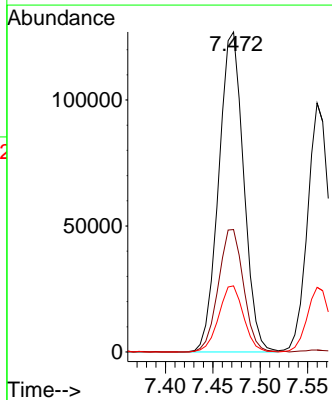
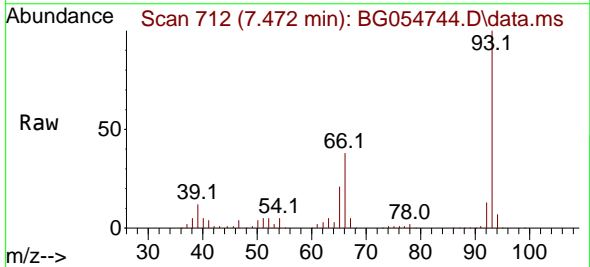
Ion	Ratio	Lower	Upper
112	100		
64	64.3	49.3	73.9
63	33.3	26.3	39.5

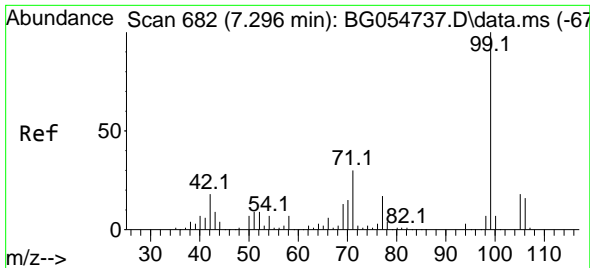


#6
 Aniline
 Concen: 49.683 ng
 RT: 7.472 min Scan# 712
 Delta R.T. -0.000 min
 Lab File: BG054744.D
 Acq: 25 Aug 2022 20:31

Tgt Ion: 93 Resp: 232419

Ion	Ratio	Lower	Upper
93	100		
66	38.2	31.8	47.8
65	20.6	16.6	25.0





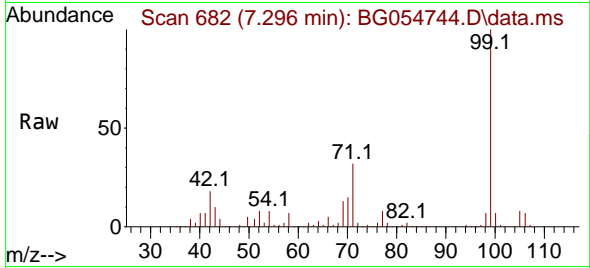
#7
 Phenol-d6
 Concen: 145.773 ng
 RT: 7.296 min Scan# 682
 Delta R.T. -0.000 min
 Lab File: BG054744.D
 Acq: 25 Aug 2022 20:31

Instrument :

BNA_G

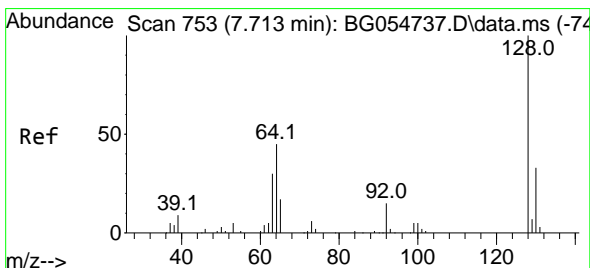
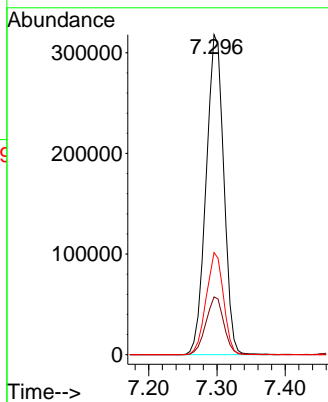
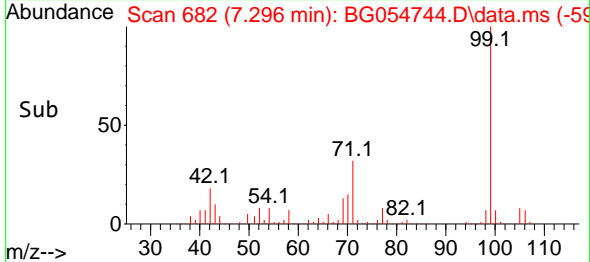
ClientSampleId :

PB147245BS

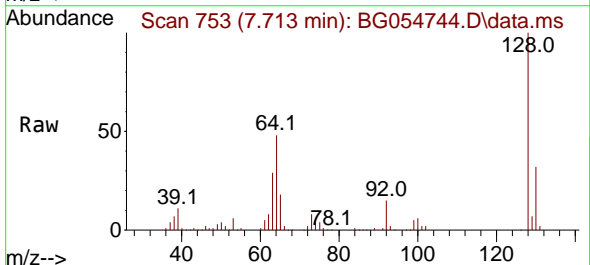


Tgt Ion: 99 Resp: 573951

Ion	Ratio	Lower	Upper
99	100		
42	18.0	14.6	22.0
71	31.9	24.6	37.0

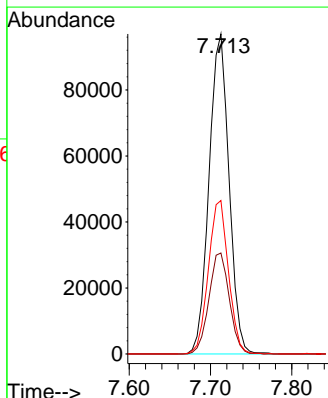
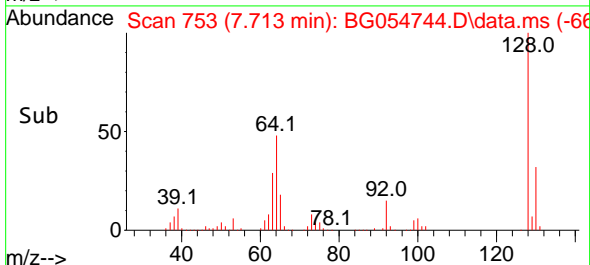


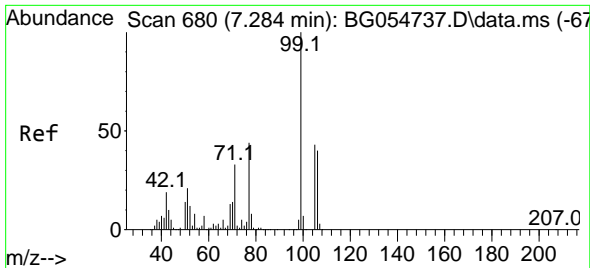
#8
 2-Chlorophenol
 Concen: 52.543 ng
 RT: 7.713 min Scan# 753
 Delta R.T. -0.000 min
 Lab File: BG054744.D
 Acq: 25 Aug 2022 20:31



Tgt Ion: 128 Resp: 165272

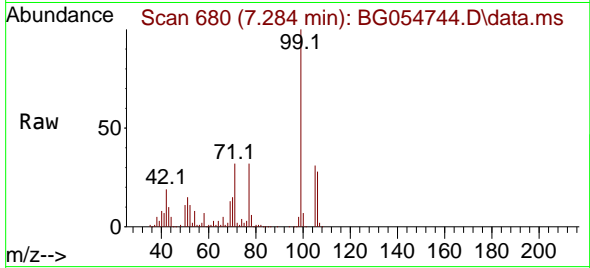
Ion	Ratio	Lower	Upper
128	100		
130	31.5	12.5	52.5
64	47.9	28.6	68.6



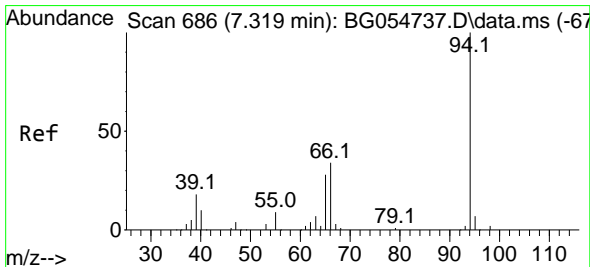
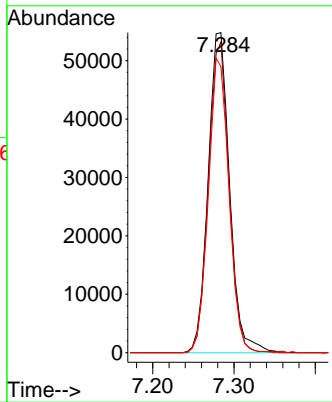
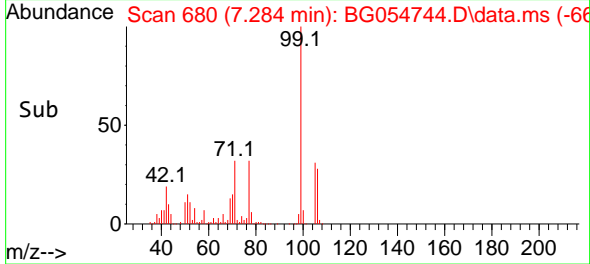


#9
Benzaldehyde
Concen: 38.938 ng
RT: 7.284 min Scan# 680
Delta R.T. -0.000 min
Lab File: BG054744.D
Acq: 25 Aug 2022 20:31

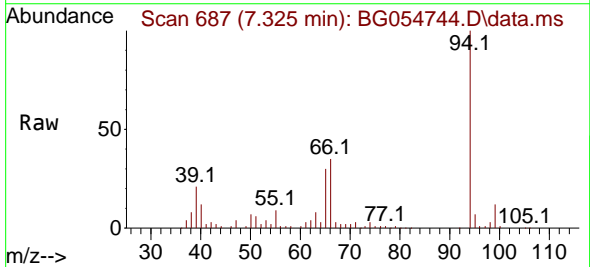
Instrument : BNA_G
Client Sample Id : PB147245BS



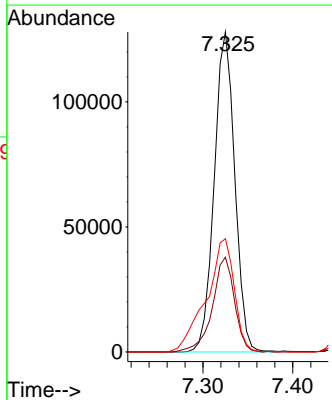
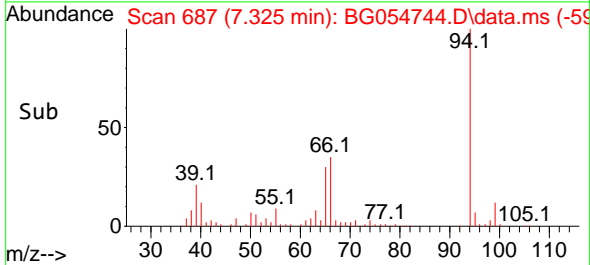
Tgt Ion: 77 Resp: 100482
Ion Ratio Lower Upper
77 100
105 97.1 75.3 115.3
106 89.4 70.2 110.2

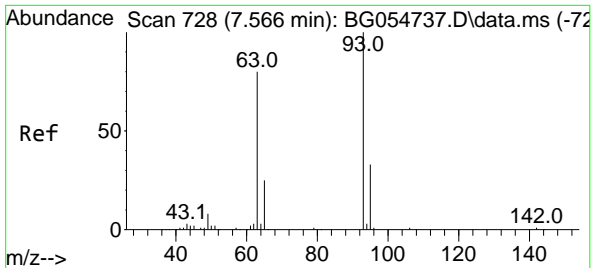


#10
Phenol
Concen: 50.155 ng
RT: 7.325 min Scan# 687
Delta R.T. 0.006 min
Lab File: BG054744.D
Acq: 25 Aug 2022 20:31



Tgt Ion: 94 Resp: 203082
Ion Ratio Lower Upper
94 100
65 29.6 9.9 49.9
66 35.4 16.4 56.4



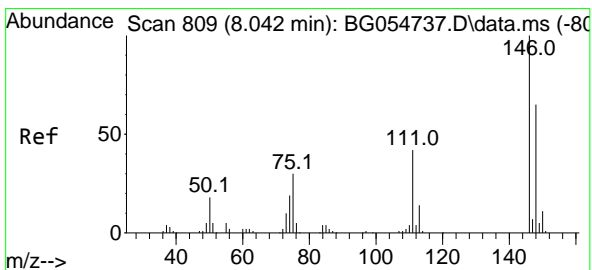
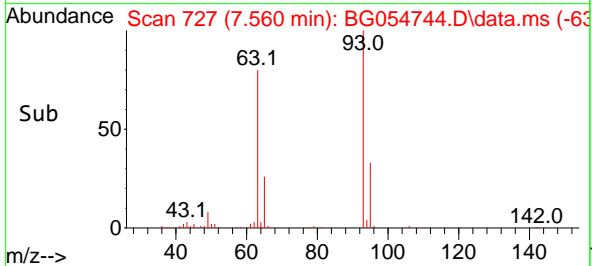
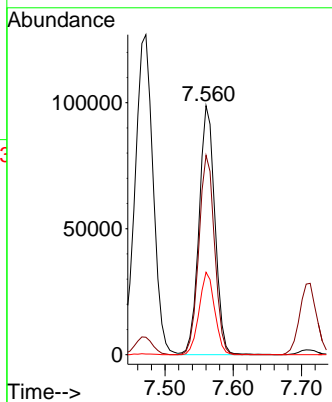
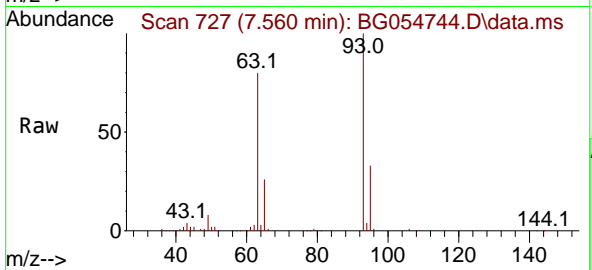


#11
 bis(2-Chloroethyl)ether
 Concen: 48.937 ng
 RT: 7.560 min Scan# 711
 Delta R.T. -0.006 min
 Lab File: BG054744.D
 Acq: 25 Aug 2022 20:31

Instrument : BNA_G
 ClientSampleId : PB147245BS

Tgt Ion: 93 Resp: 159361

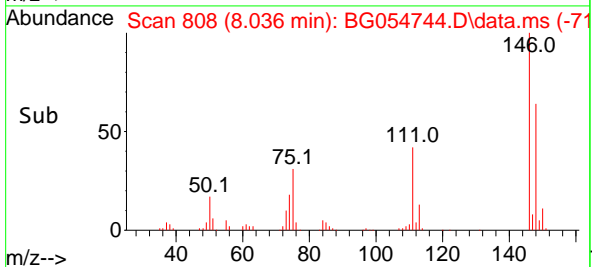
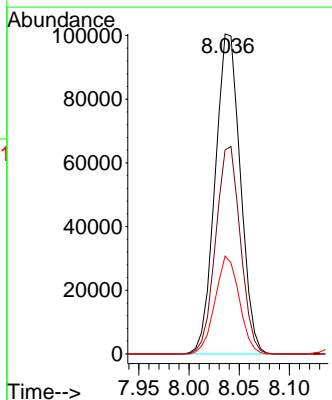
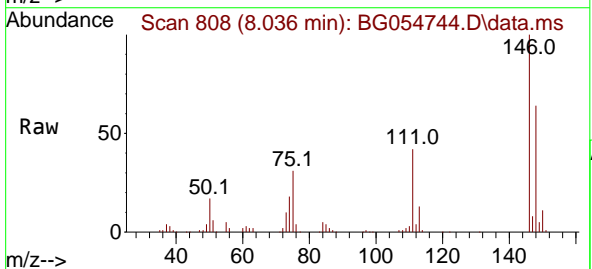
Ion	Ratio	Lower	Upper
93	100		
63	80.0	62.1	102.1
95	33.1	12.1	52.1

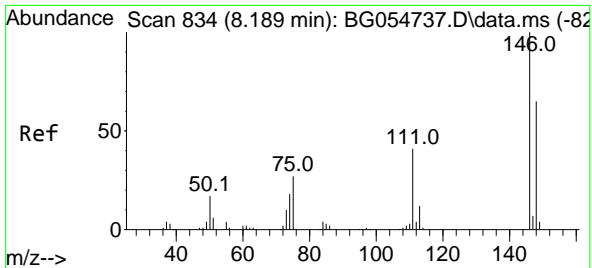


#12
 1,3-Dichlorobenzene
 Concen: 48.206 ng
 RT: 8.036 min Scan# 808
 Delta R.T. -0.006 min
 Lab File: BG054744.D
 Acq: 25 Aug 2022 20:31

Tgt Ion: 146 Resp: 175475

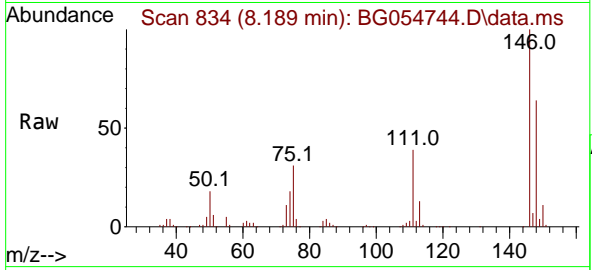
Ion	Ratio	Lower	Upper
146	100		
148	63.7	50.6	76.0
75	30.6	24.3	36.5



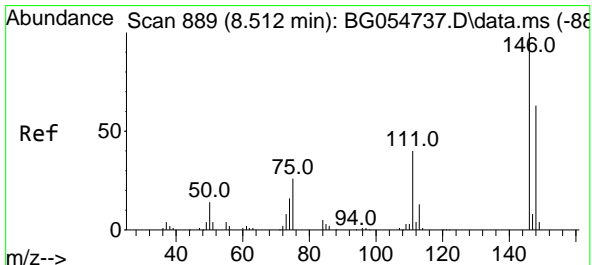
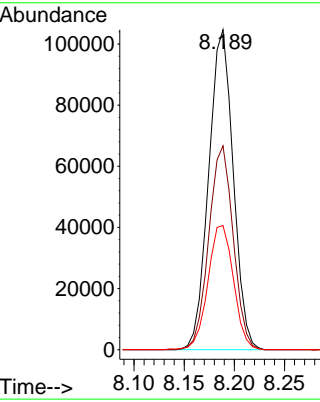
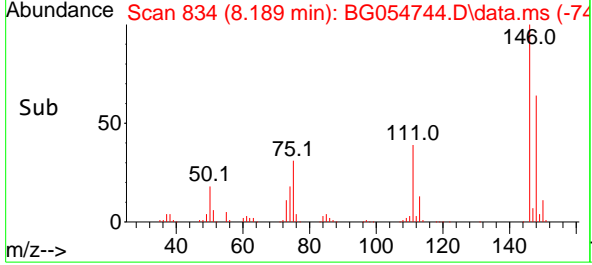


#13
 1,4-Dichlorobenzene
 Concen: 48.331 ng
 RT: 8.189 min Scan# 811
 Delta R.T. -0.000 min
 Lab File: BG054744.D
 Acq: 25 Aug 2022 20:31

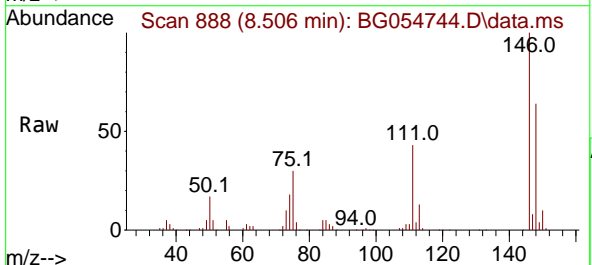
Instrument : BNA_G
 ClientSampleId : PB147245BS



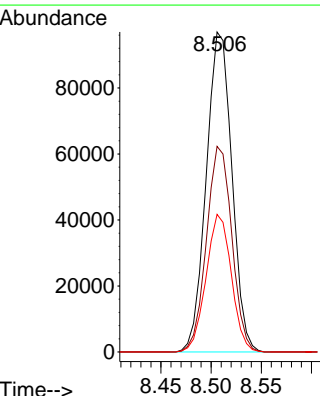
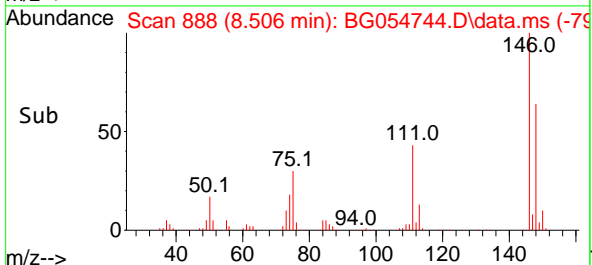
Tgt Ion:146 Resp: 177457
 Ion Ratio Lower Upper
 146 100
 148 63.7 50.4 75.6
 111 38.8 33.0 49.4

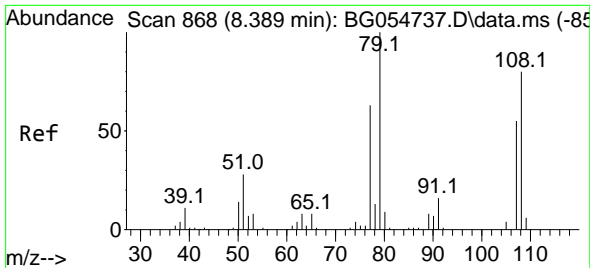


#14
 1,2-Dichlorobenzene
 Concen: 49.518 ng
 RT: 8.506 min Scan# 888
 Delta R.T. -0.006 min
 Lab File: BG054744.D
 Acq: 25 Aug 2022 20:31



Tgt Ion:146 Resp: 172398
 Ion Ratio Lower Upper
 146 100
 148 64.3 51.2 76.8
 111 43.0 34.3 51.5





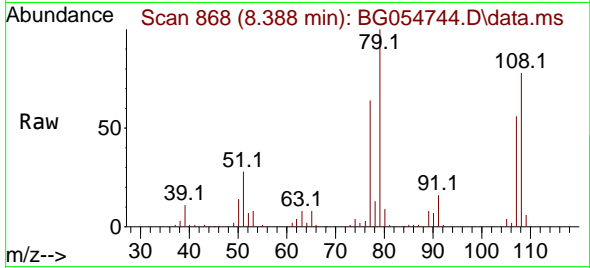
#15
 Benzyl Alcohol
 Concen: 51.601 ng
 RT: 8.388 min Scan# 80
 Delta R.T. -0.000 min
 Lab File: BG054744.D
 Acq: 25 Aug 2022 20:31

Instrument :

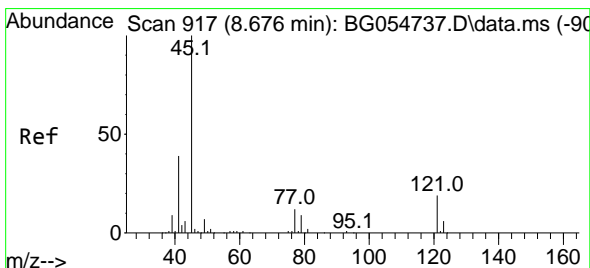
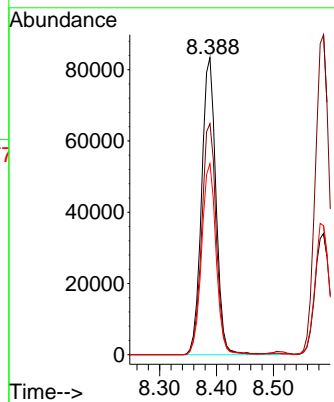
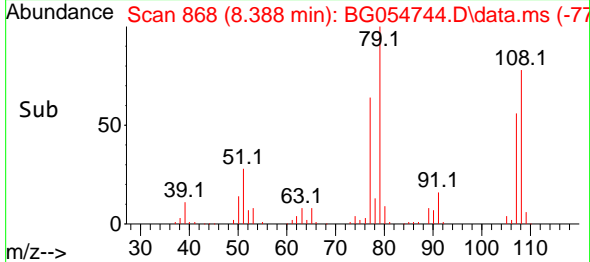
BNA_G

ClientSampleId :

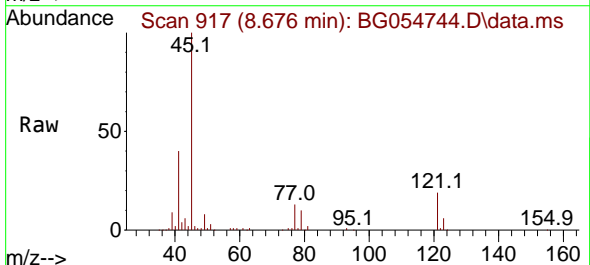
PB147245BS



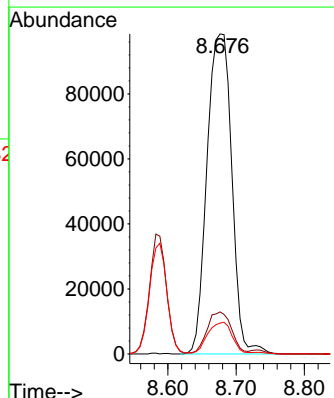
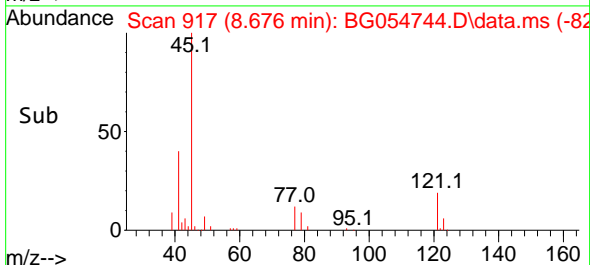
Tgt Ion: 79 Resp: 146775
 Ion Ratio Lower Upper
 79 100
 108 77.8 63.4 95.0
 77 64.3 55.0 82.4

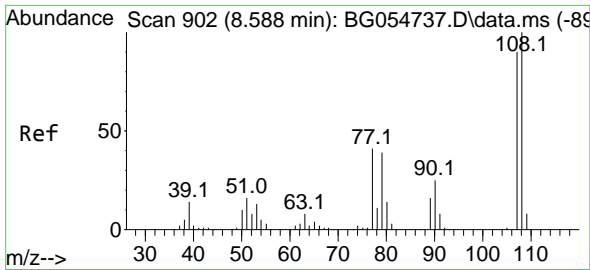


#16
 2,2'-oxybis(1-Chloropropane)
 Concen: 48.868 ng
 RT: 8.676 min Scan# 917
 Delta R.T. -0.000 min
 Lab File: BG054744.D
 Acq: 25 Aug 2022 20:31



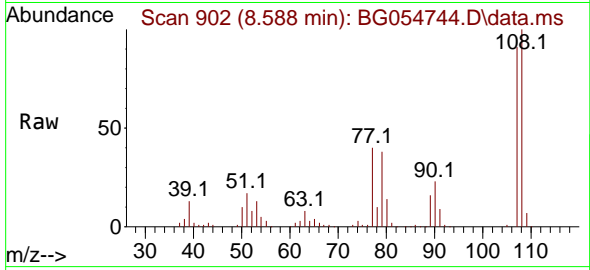
Tgt Ion: 45 Resp: 249012
 Ion Ratio Lower Upper
 45 100
 77 13.2 0.0 32.8
 79 9.6 0.0 30.4





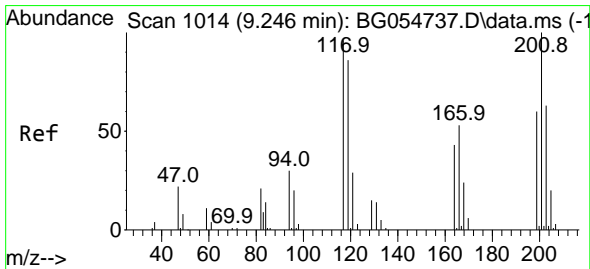
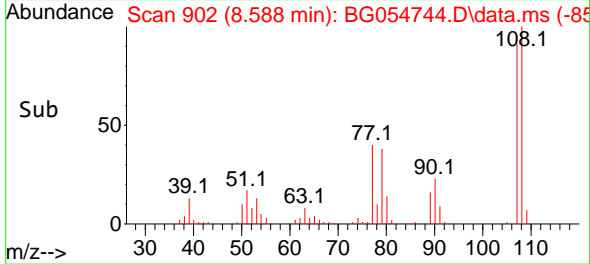
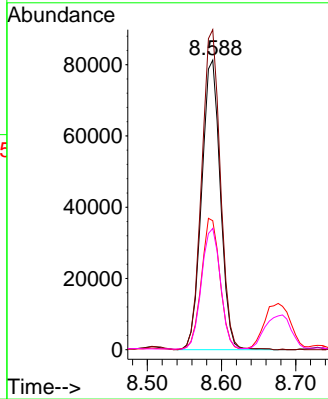
#17
 2-Methylphenol
 Concen: 50.908 ng
 RT: 8.588 min Scan# 90
 Delta R.T. -0.000 min
 Lab File: BG054744.D
 Acq: 25 Aug 2022 20:31

Instrument :
 BNA_G
 ClientSampleId :
 PB147245BS



Tgt Ion:107 Resp: 141922

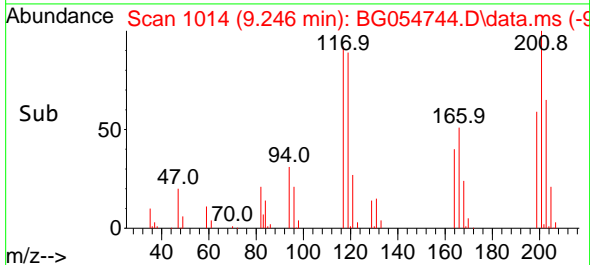
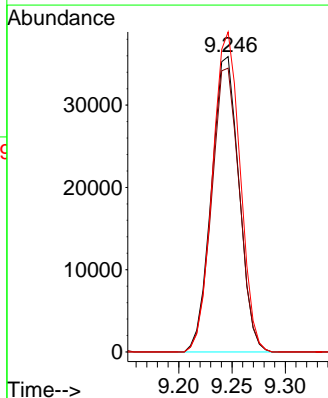
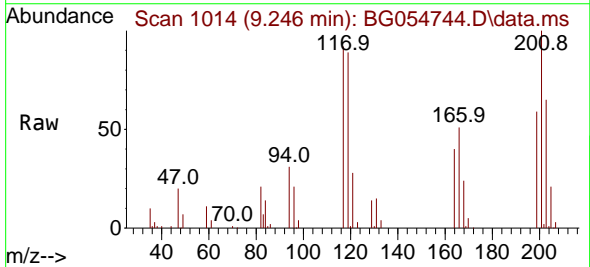
Ion	Ratio	Lower	Upper
107	100		
108	110.5	85.6	128.4
77	44.5	35.8	53.8
79	41.9	33.8	50.6

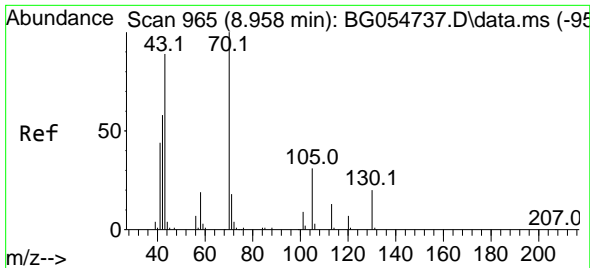


#18
 Hexachloroethane
 Concen: 48.460 ng
 RT: 9.246 min Scan# 1014
 Delta R.T. -0.000 min
 Lab File: BG054744.D
 Acq: 25 Aug 2022 20:31

Tgt Ion:117 Resp: 64521

Ion	Ratio	Lower	Upper
117	100		
119	96.1	77.0	115.6
201	108.3	87.2	130.8





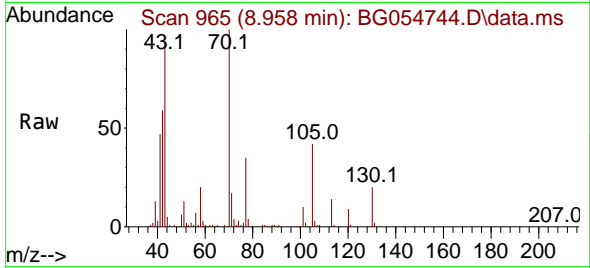
#19
 n-Nitroso-di-n-propylamine
 Concen: 47.187 ng
 RT: 8.958 min Scan# 90
 Delta R.T. -0.000 min
 Lab File: BG054744.D
 Acq: 25 Aug 2022 20:31

Instrument :

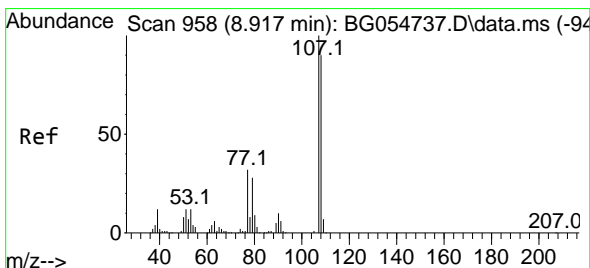
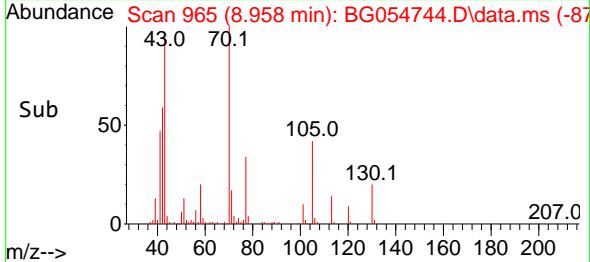
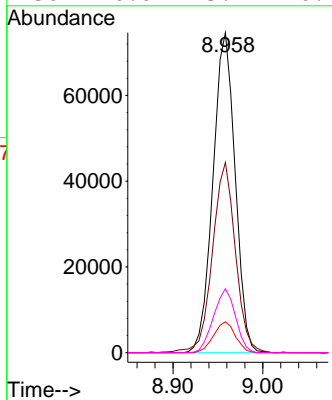
BNA_G

ClientSampleId :

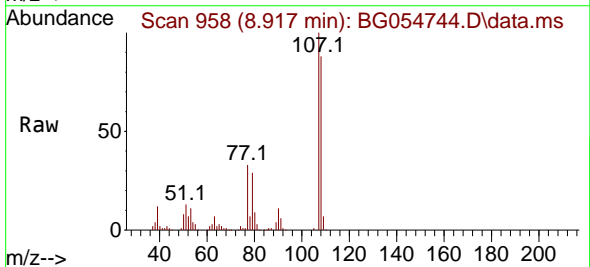
PB147245BS



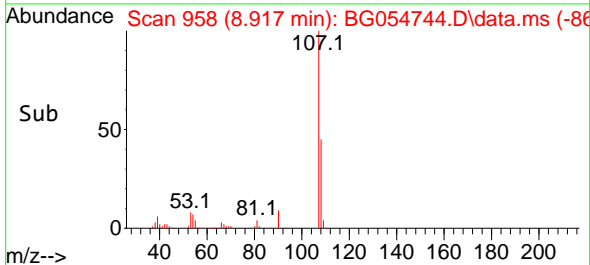
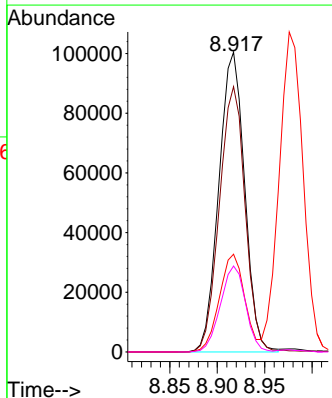
Tgt Ion: 70 Resp: 127761
 Ion Ratio Lower Upper
 70 100
 42 59.5 46.6 69.8
 101 9.7 7.7 11.5
 130 20.0 13.9 20.9

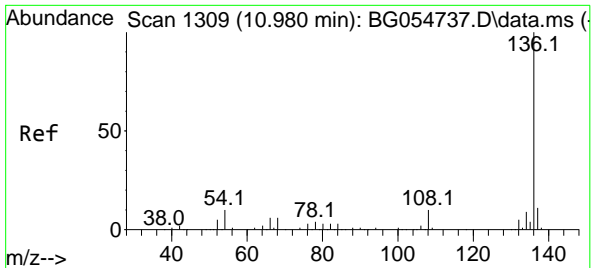


#20
 3+4-Methylphenols
 Concen: 49.035 ng
 RT: 8.917 min Scan# 958
 Delta R.T. -0.000 min
 Lab File: BG054744.D
 Acq: 25 Aug 2022 20:31



Tgt Ion: 107 Resp: 189560
 Ion Ratio Lower Upper
 107 100
 108 88.5 71.6 111.6
 77 32.6 13.1 53.1
 79 28.7 7.9 47.9

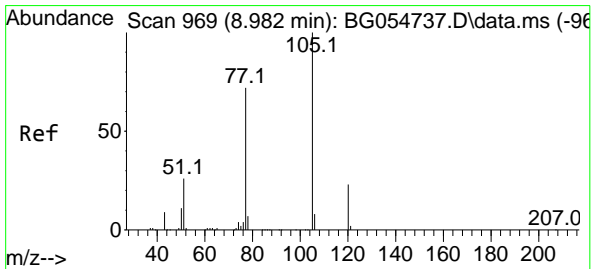
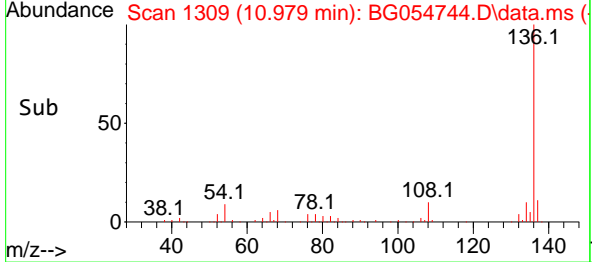
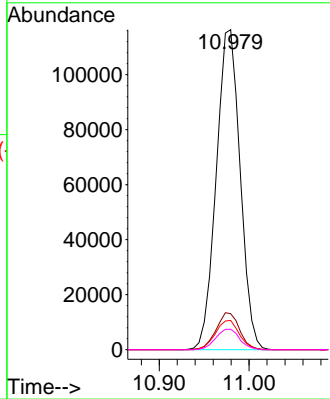
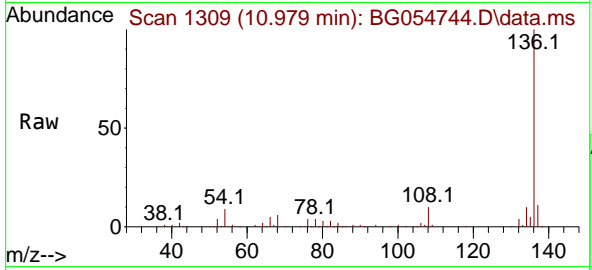




#21
 Naphthalene-d8
 Concen: 20.000 ng
 RT: 10.979 min Scan# 11
 Delta R.T. -0.001 min
 Lab File: BG054744.D
 Acq: 25 Aug 2022 20:31

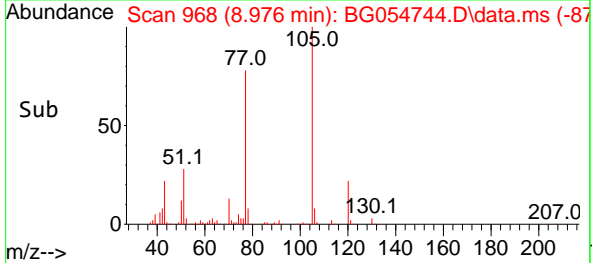
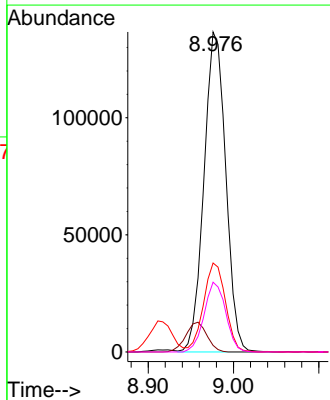
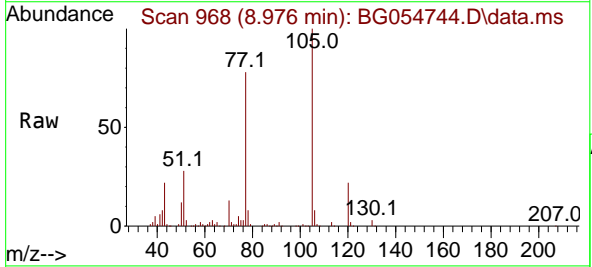
Instrument : BNA_G
 ClientSampleId : PB147245BS

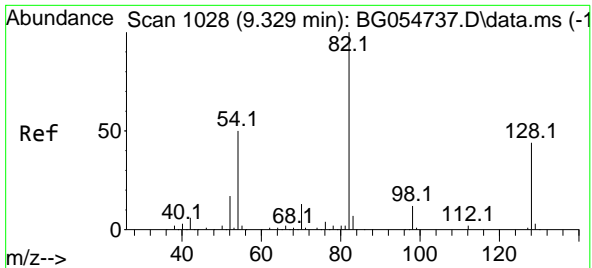
Tgt Ion	Resp	Lower	Upper
136	100		
137	11.3	9.2	13.8
54	9.1	7.7	11.5
68	6.4	5.6	8.4



#22
 Acetophenone
 Concen: 45.165 ng
 RT: 8.976 min Scan# 968
 Delta R.T. -0.006 min
 Lab File: BG054744.D
 Acq: 25 Aug 2022 20:31

Tgt Ion	Resp	Lower	Upper
105	100		
71	2.0	1.2	1.8
51	27.8	22.9	34.3
120	21.8	17.4	26.2



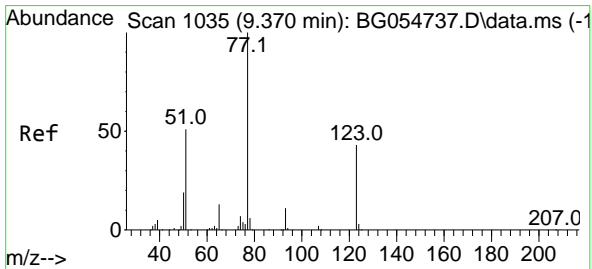
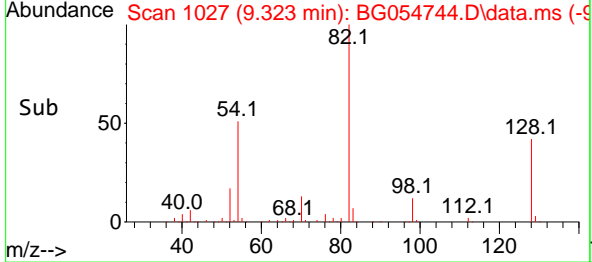
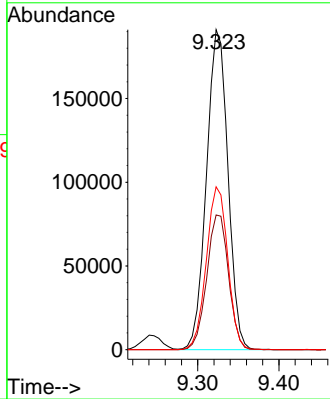
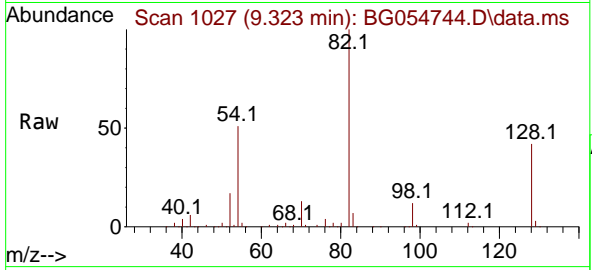


#23
 Nitrobenzene-d5
 Concen: 85.585 ng
 RT: 9.323 min Scan# 1027
 Delta R.T. -0.006 min
 Lab File: BG054744.D
 Acq: 25 Aug 2022 20:31

Instrument : BNA_G
 ClientSampleId : PB147245BS

Tgt Ion: 82 Resp: 350263

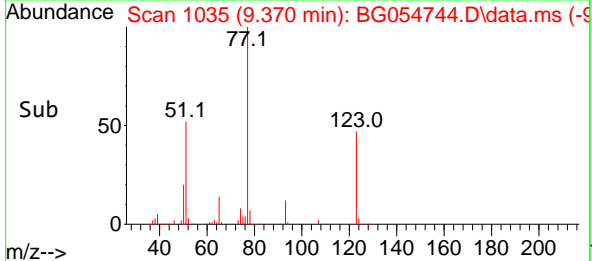
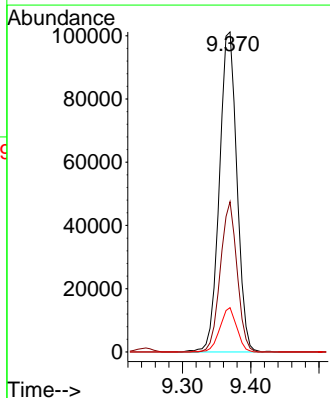
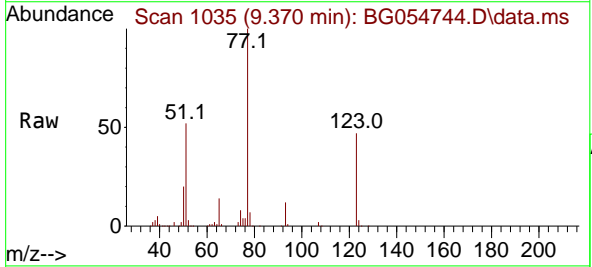
Ion	Ratio	Lower	Upper
82	100		
128	42.1	32.2	48.2
54	50.9	41.4	62.0

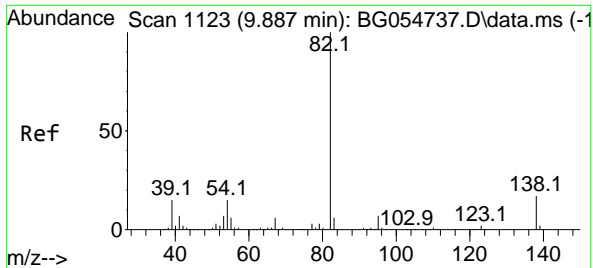


#24
 Nitrobenzene
 Concen: 43.796 ng
 RT: 9.370 min Scan# 1035
 Delta R.T. -0.000 min
 Lab File: BG054744.D
 Acq: 25 Aug 2022 20:31

Tgt Ion: 77 Resp: 180661

Ion	Ratio	Lower	Upper
77	100		
123	47.0	35.0	52.6
65	13.8	10.2	15.2



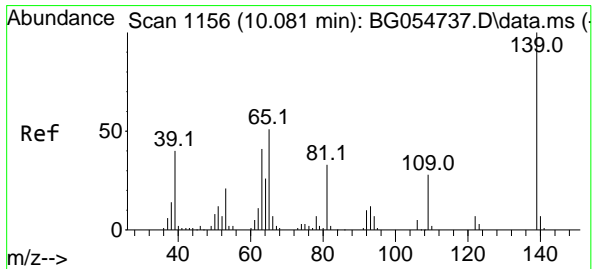
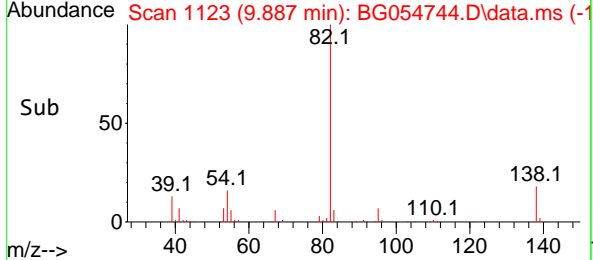
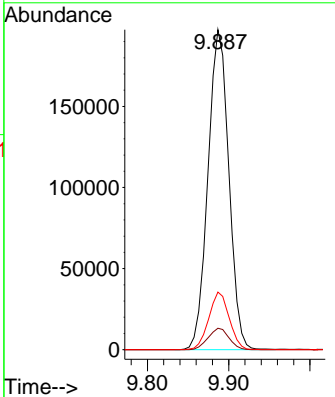
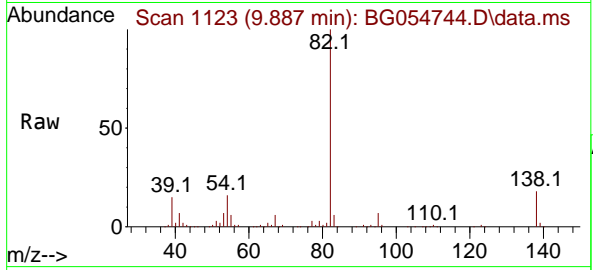


#25
 Isophorone
 Concen: 46.115 ng
 RT: 9.887 min Scan# 1113
 Delta R.T. -0.000 min
 Lab File: BG054744.D
 Acq: 25 Aug 2022 20:31

Instrument : BNA_G
 ClientSampleId : PB147245BS

Tgt Ion: 82 Resp: 351897

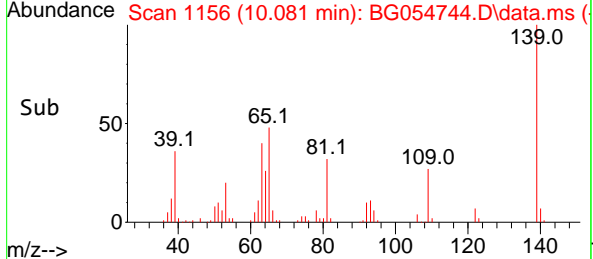
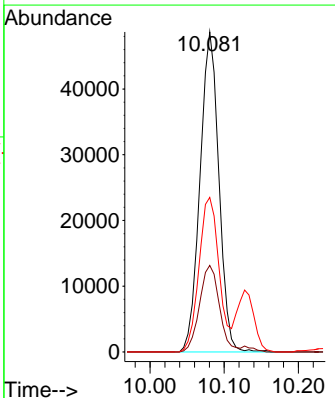
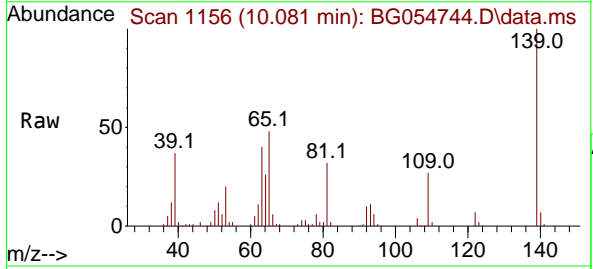
Ion	Ratio	Lower	Upper
82	100		
95	6.7	5.6	8.4
138	18.0	13.9	20.9

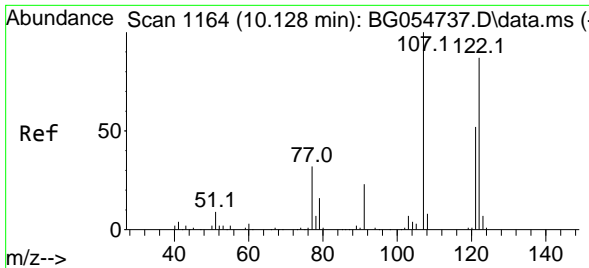


#26
 2-Nitrophenol
 Concen: 47.254 ng
 RT: 10.081 min Scan# 1156
 Delta R.T. -0.000 min
 Lab File: BG054744.D
 Acq: 25 Aug 2022 20:31

Tgt Ion: 139 Resp: 86104

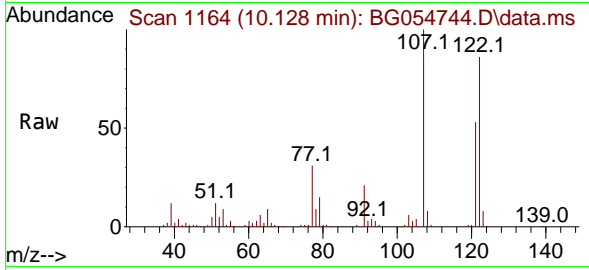
Ion	Ratio	Lower	Upper
139	100		
109	27.0	21.8	32.6
65	48.3	37.4	56.0





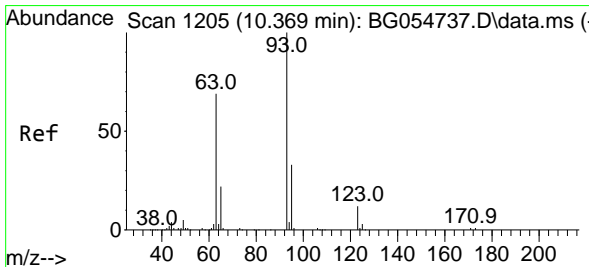
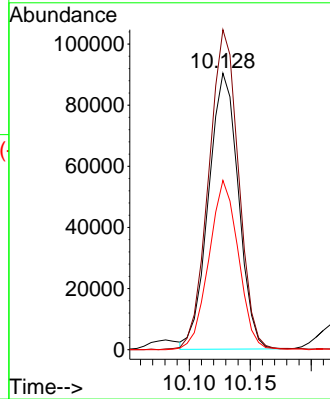
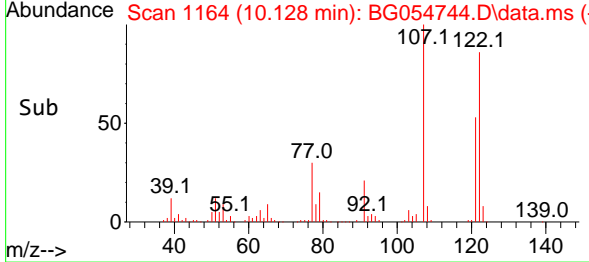
#27
 2,4-Dimethylphenol
 Concen: 53.422 ng
 RT: 10.128 min Scan# 1164
 Delta R.T. -0.000 min
 Lab File: BG054744.D
 Acq: 25 Aug 2022 20:31

Instrument : BNA_G
 ClientSampleId : PB147245BS

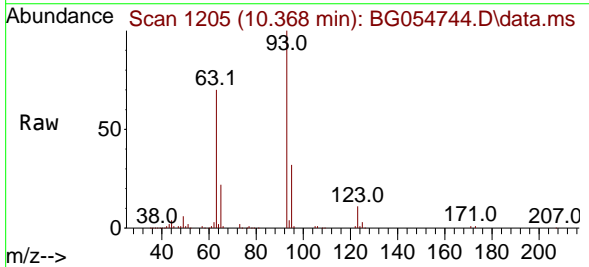


Tgt Ion:122 Resp: 154230

Ion	Ratio	Lower	Upper
122	100		
107	115.7	94.6	142.0
121	61.2	49.8	74.6

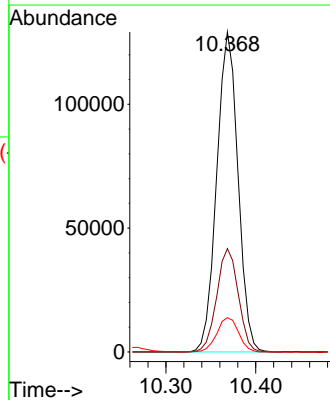
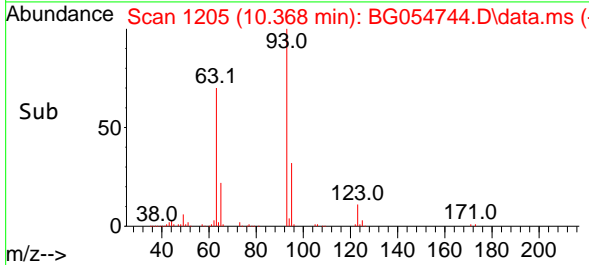


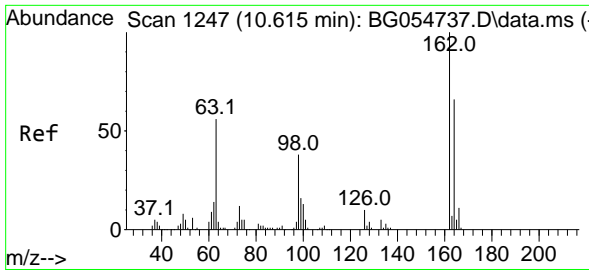
#28
 bis(2-Chloroethoxy)methane
 Concen: 48.783 ng
 RT: 10.368 min Scan# 1205
 Delta R.T. -0.000 min
 Lab File: BG054744.D
 Acq: 25 Aug 2022 20:31



Tgt Ion: 93 Resp: 212124

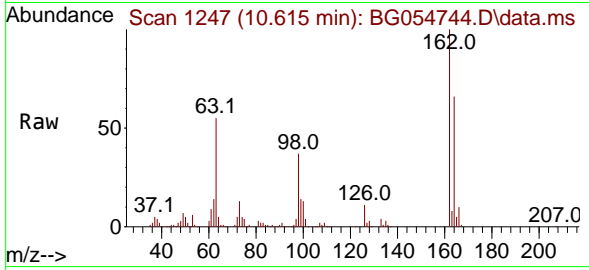
Ion	Ratio	Lower	Upper
93	100		
95	32.3	26.2	39.2
123	10.7	8.4	12.6



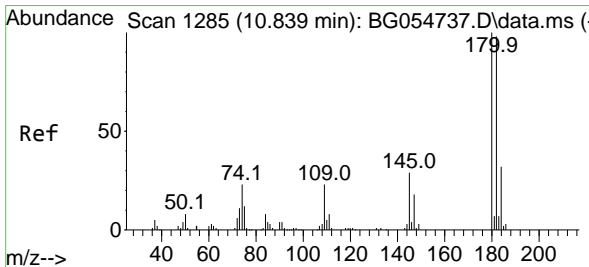
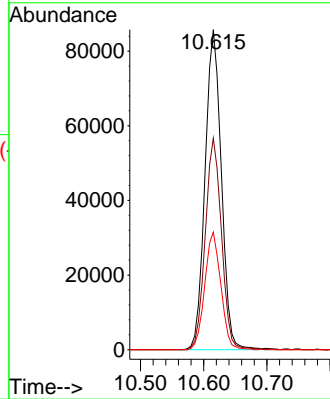
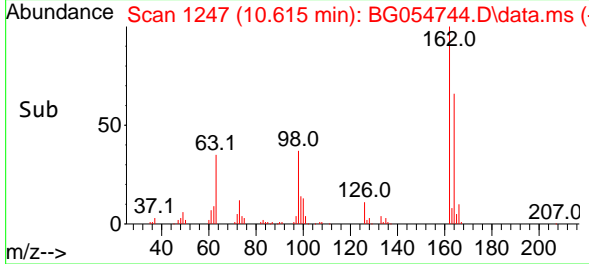


#29
 2,4-Dichlorophenol
 Concen: 46.820 ng
 RT: 10.615 min Scan# 11
 Delta R.T. -0.000 min
 Lab File: BG054744.D
 Acq: 25 Aug 2022 20:31

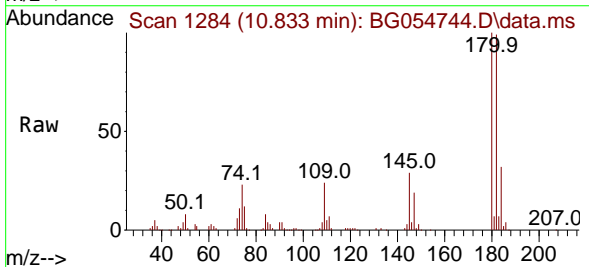
Instrument :
 BNA_G
 ClientSampleId :
 PB147245BS



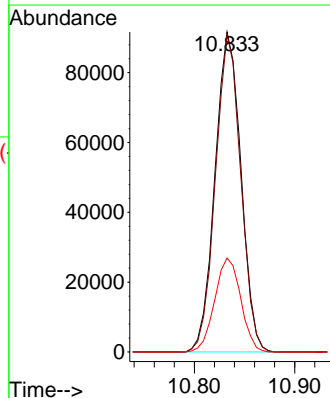
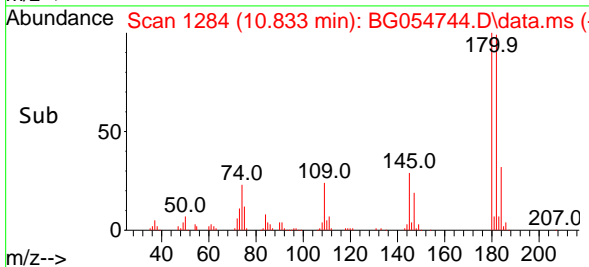
Tgt Ion:162 Resp: 153744
 Ion Ratio Lower Upper
 162 100
 164 66.1 47.2 87.2
 98 36.7 16.6 56.6

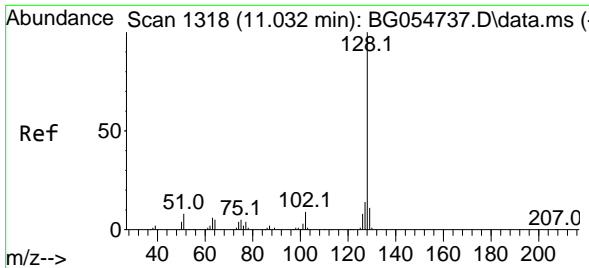


#30
 1,2,4-Trichlorobenzene
 Concen: 43.822 ng
 RT: 10.833 min Scan# 1284
 Delta R.T. -0.006 min
 Lab File: BG054744.D
 Acq: 25 Aug 2022 20:31



Tgt Ion:180 Resp: 164448
 Ion Ratio Lower Upper
 180 100
 182 99.3 77.0 115.6
 145 29.3 24.0 36.0



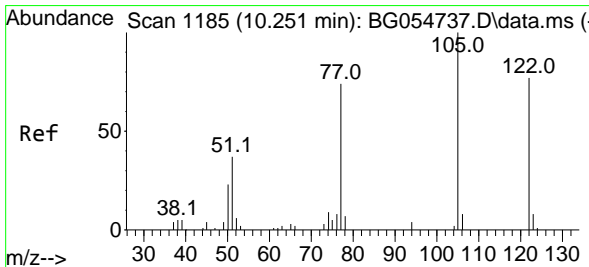
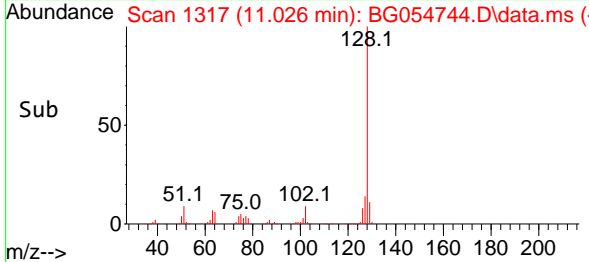
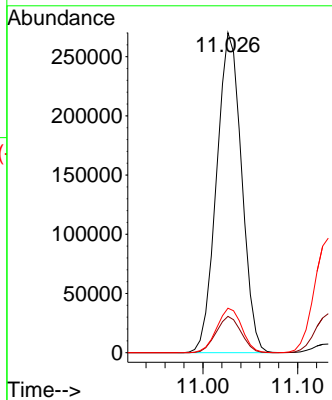
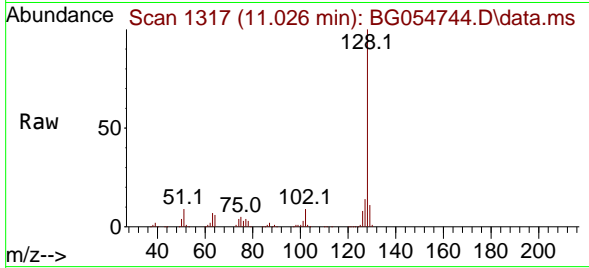


#31
 Naphthalene
 Concen: 43.018 ng
 RT: 11.026 min Scan# 111
 Delta R.T. -0.006 min
 Lab File: BG054744.D
 Acq: 25 Aug 2022 20:31

Instrument :
 BNA_G
 ClientSampleId :
 PB147245BS

Tgt Ion:128 Resp: 495868

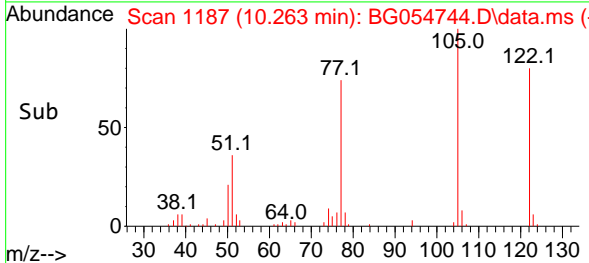
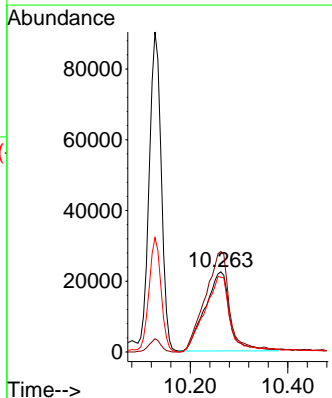
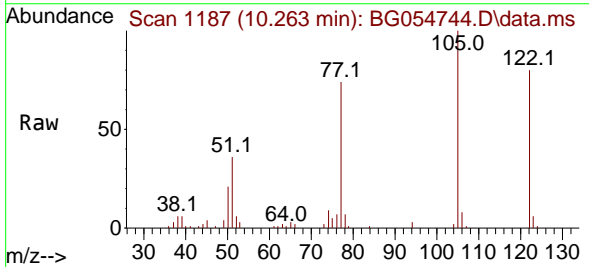
Ion	Ratio	Lower	Upper
128	100		
129	11.3	9.0	13.4
127	13.9	11.1	16.7

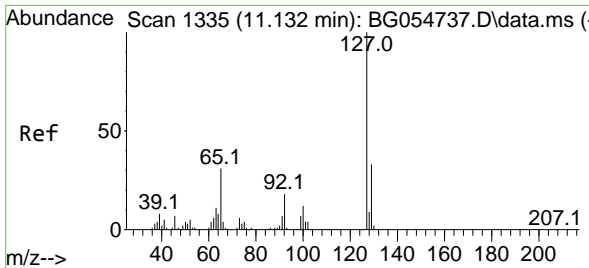


#32
 Benzoic acid
 Concen: 39.884 ng
 RT: 10.263 min Scan# 1187
 Delta R.T. 0.012 min
 Lab File: BG054744.D
 Acq: 25 Aug 2022 20:31

Tgt Ion:122 Resp: 78960

Ion	Ratio	Lower	Upper
122	100		
105	125.4	101.5	141.5
77	93.2	69.3	109.3





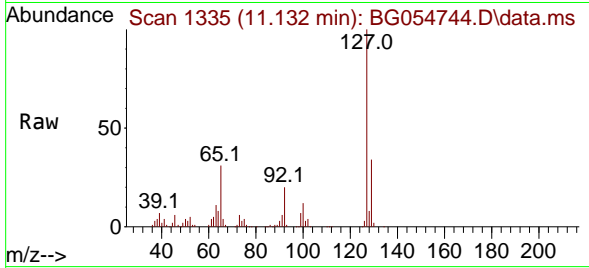
#33
 4-Chloroaniline
 Concen: 38.584 ng
 RT: 11.132 min Scan# 11
 Delta R.T. -0.000 min
 Lab File: BG054744.D
 Acq: 25 Aug 2022 20:31

Instrument :

BNA_G

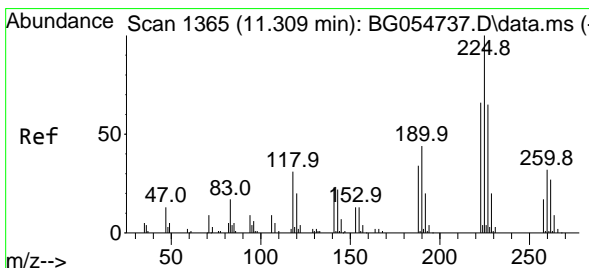
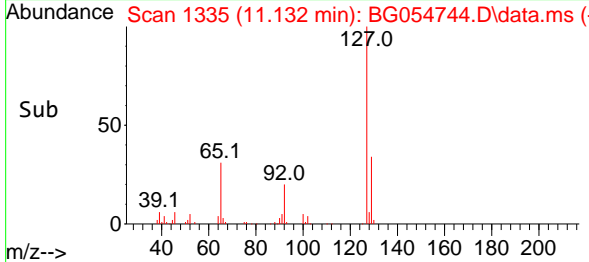
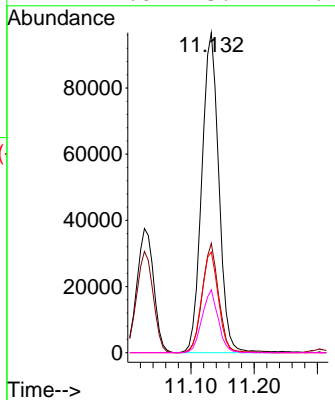
ClientSampleId :

PB147245BS

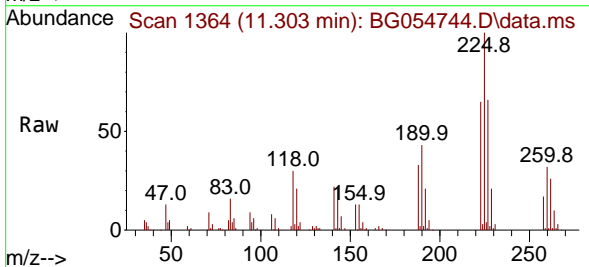


Tgt Ion:127 Resp: 181319

Ion	Ratio	Lower	Upper
127	100		
129	34.1	26.0	39.0
65	31.4	25.8	38.8
92	19.6	15.1	22.7

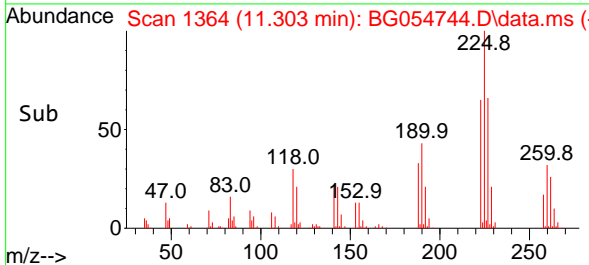
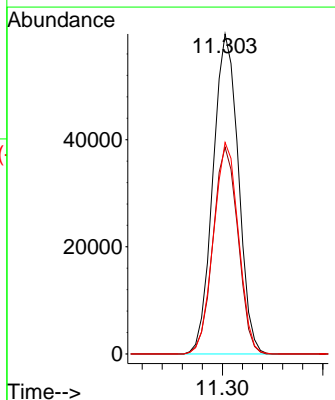


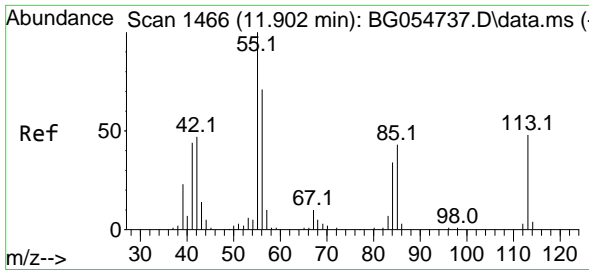
#34
 Hexachlorobutadiene
 Concen: 43.582 ng
 RT: 11.303 min Scan# 1364
 Delta R.T. -0.006 min
 Lab File: BG054744.D
 Acq: 25 Aug 2022 20:31



Tgt Ion:225 Resp: 104785

Ion	Ratio	Lower	Upper
225	100		
223	64.6	51.4	77.0
227	66.1	52.6	79.0

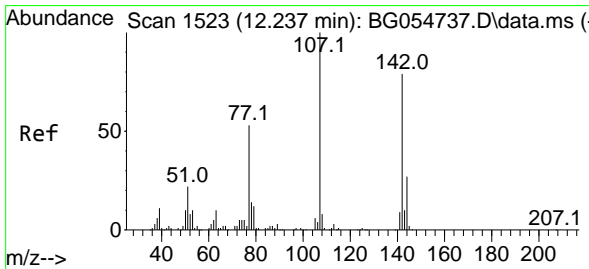
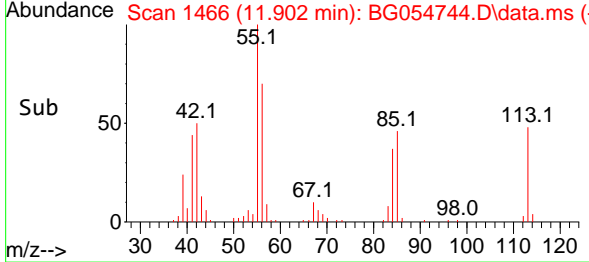
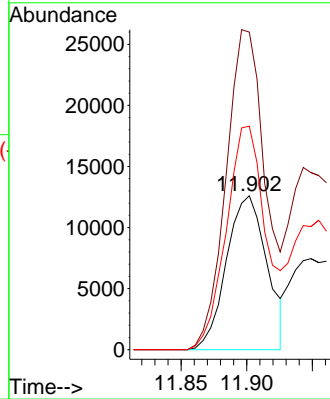
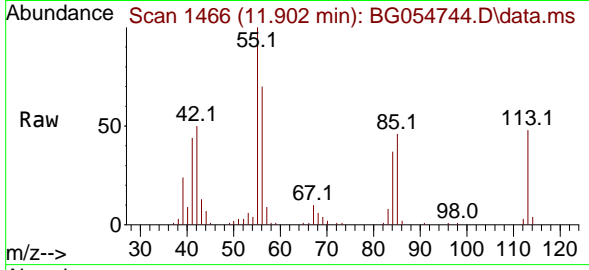




#35
 Caprolactam
 Concen: 23.287 ng
 RT: 11.902 min Scan# 14
 Delta R.T. -0.000 min
 Lab File: BG054744.D
 Acq: 25 Aug 2022 20:31

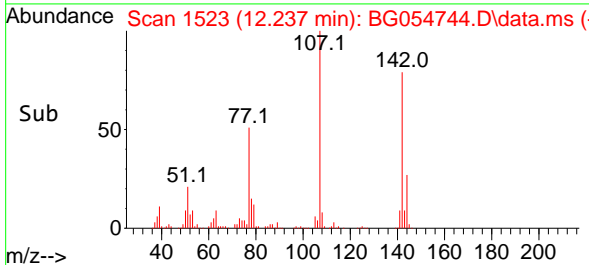
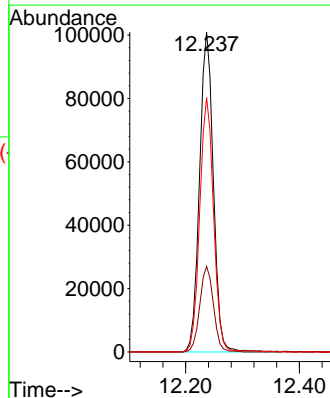
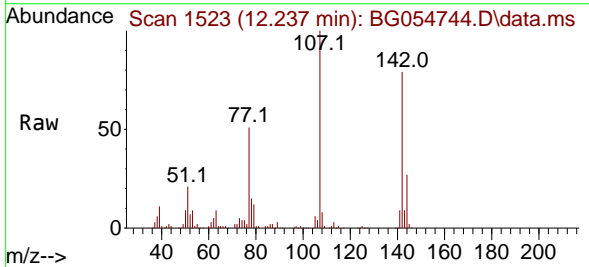
Instrument :
 BNA_G
 ClientSampleId :
 PB147245BS

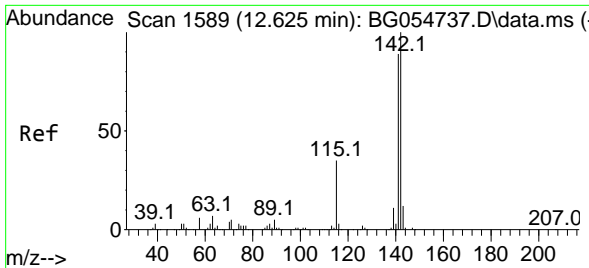
Tgt Ion:113 Resp: 26978
 Ion Ratio Lower Upper
 113 100
 55 206.3 179.1 219.1
 56 145.1 120.8 160.8



#36
 4-Chloro-3-methylphenol
 Concen: 47.481 ng
 RT: 12.237 min Scan# 1523
 Delta R.T. -0.000 min
 Lab File: BG054744.D
 Acq: 25 Aug 2022 20:31

Tgt Ion:107 Resp: 170499
 Ion Ratio Lower Upper
 107 100
 144 26.8 22.4 33.6
 142 79.5 65.8 98.8





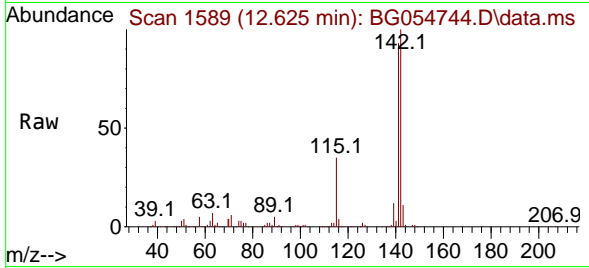
#37
 2-Methylnaphthalene
 Concen: 43.579 ng
 RT: 12.625 min Scan# 11
 Delta R.T. -0.000 min
 Lab File: BG054744.D
 Acq: 25 Aug 2022 20:31

Instrument :

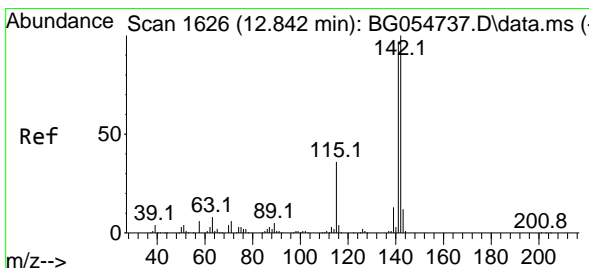
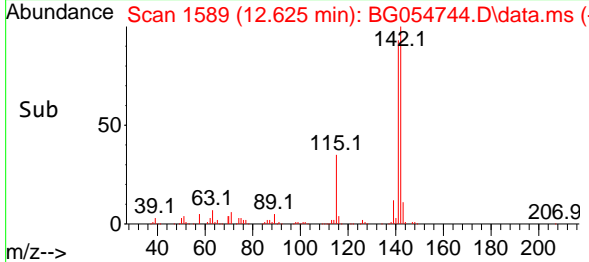
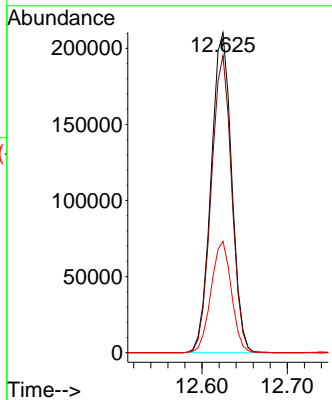
BNA_G

ClientSampleId :

PB147245BS

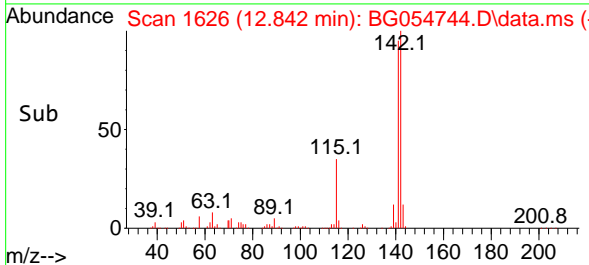
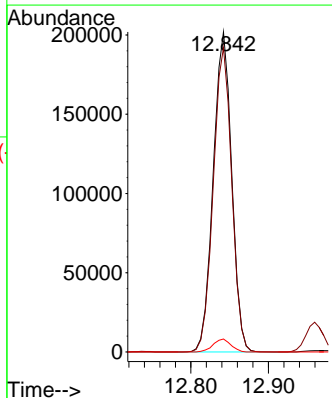
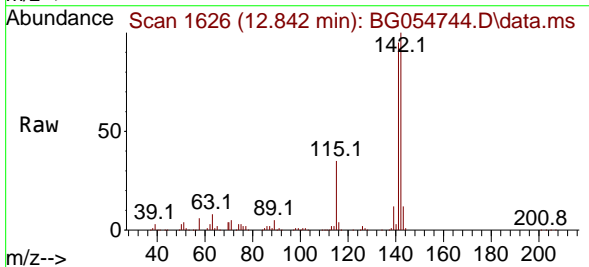


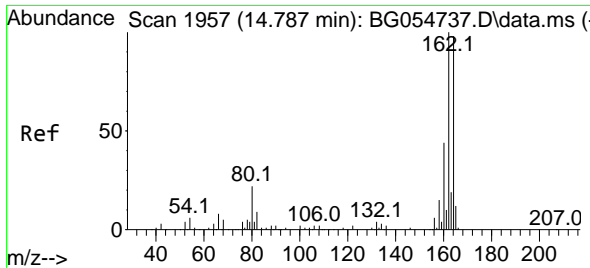
Tgt Ion:142 Resp: 352075
 Ion Ratio Lower Upper
 142 100
 141 92.8 73.0 109.4
 115 34.8 27.3 40.9



#38
 1-Methylnaphthalene
 Concen: 42.495 ng
 RT: 12.842 min Scan# 1626
 Delta R.T. -0.000 min
 Lab File: BG054744.D
 Acq: 25 Aug 2022 20:31

Tgt Ion:142 Resp: 334024
 Ion Ratio Lower Upper
 142 100
 141 95.1 77.4 116.0
 116 4.0 3.0 4.4

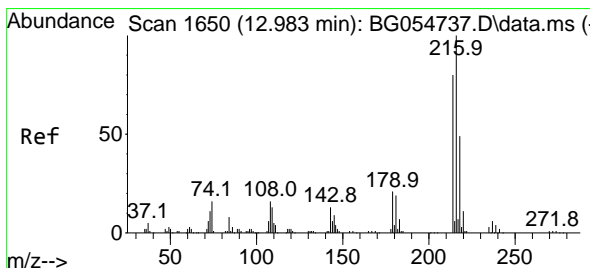
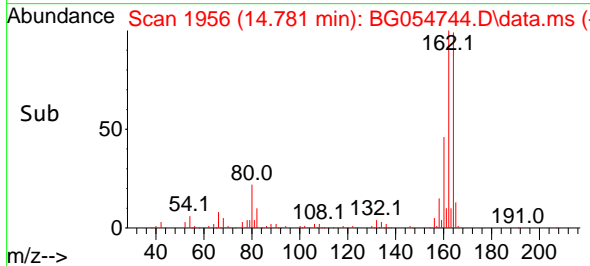
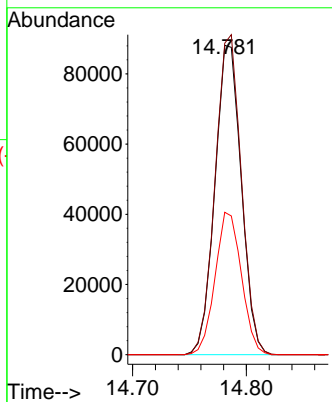
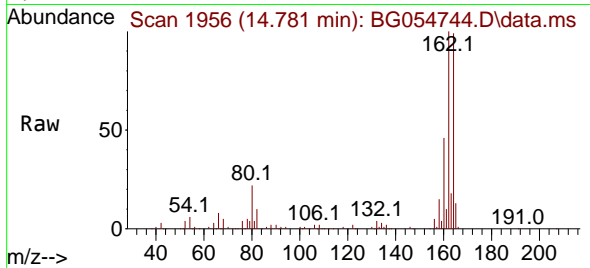




#39
 Acenaphthene-d10
 Concen: 20.000 ng
 RT: 14.781 min Scan# 1956
 Delta R.T. -0.006 min
 Lab File: BG054744.D
 Acq: 25 Aug 2022 20:31

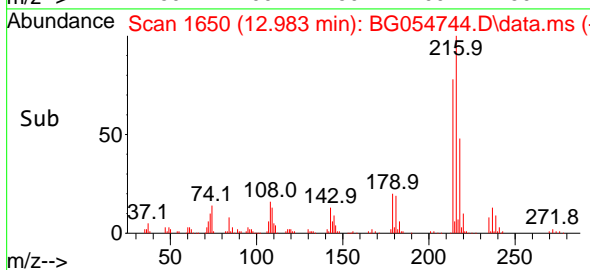
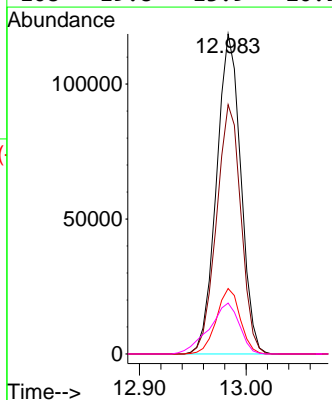
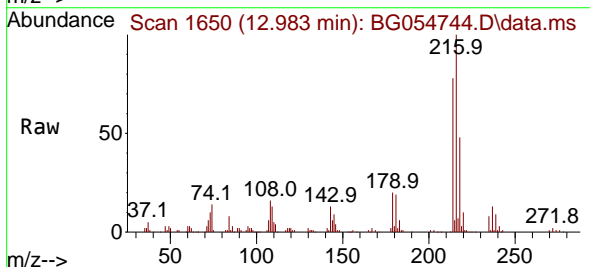
Instrument :
 BNA_G
 ClientSampleId :
 PB147245BS

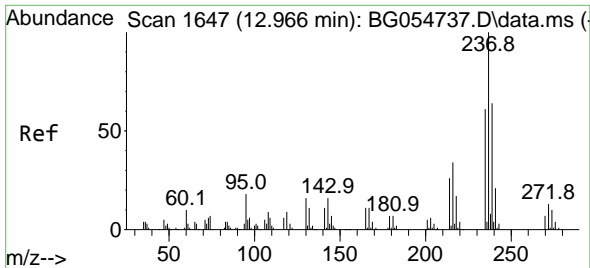
Tgt Ion	Resp	Lower	Upper
164	100		
162	100.7	83.0	124.4
160	46.1	38.0	57.0



#40
 1,2,4,5-Tetrachlorobenzene
 Concen: 43.781 ng
 RT: 12.983 min Scan# 1650
 Delta R.T. -0.000 min
 Lab File: BG054744.D
 Acq: 25 Aug 2022 20:31

Tgt Ion	Resp	Lower	Upper
216	100		
214	78.5	63.2	94.8
179	20.0	16.5	24.7
108	19.8	13.9	20.9

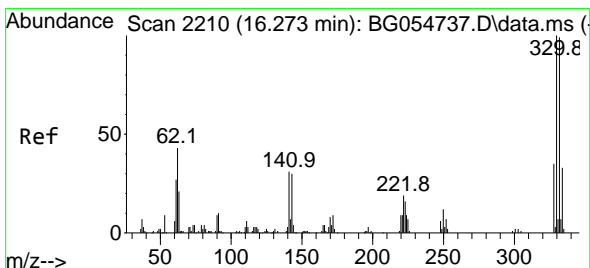
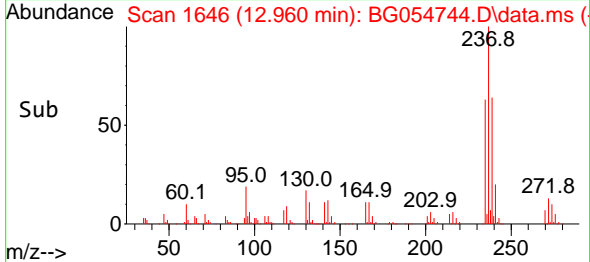
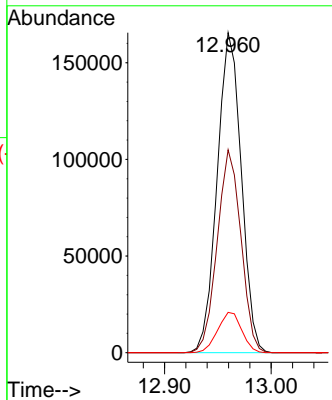
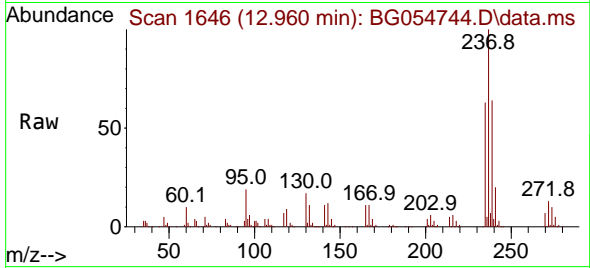




#41
 Hexachlorocyclopentadiene
 Concen: 114.442 ng
 RT: 12.960 min Scan# 110
 Delta R.T. -0.006 min
 Lab File: BG054744.D
 Acq: 25 Aug 2022 20:31

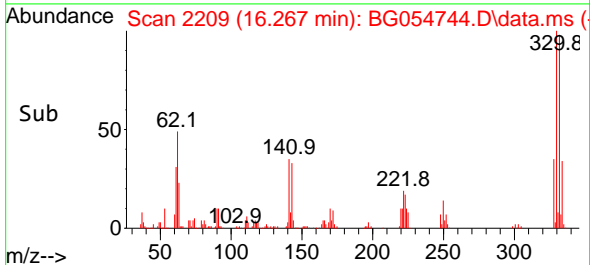
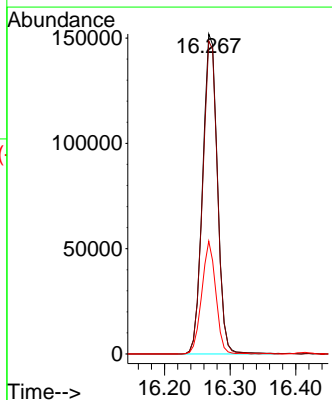
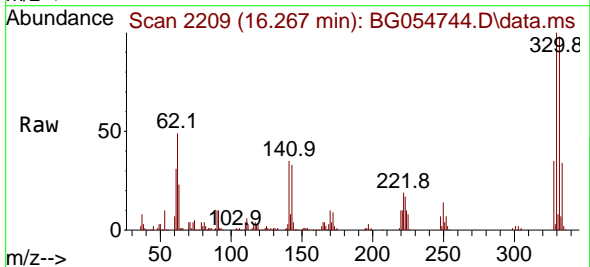
Instrument :
 BNA_G
 ClientSampleId :
 PB147245BS

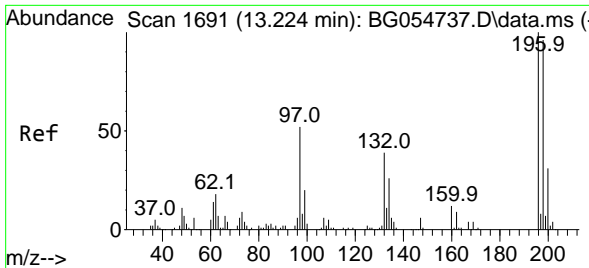
Tgt Ion:237 Resp: 259776
 Ion Ratio Lower Upper
 237 100
 235 63.4 42.2 82.2
 272 12.6 0.0 34.0



#42
 2,4,6-Tribromophenol
 Concen: 134.154 ng
 RT: 16.267 min Scan# 2209
 Delta R.T. -0.006 min
 Lab File: BG054744.D
 Acq: 25 Aug 2022 20:31

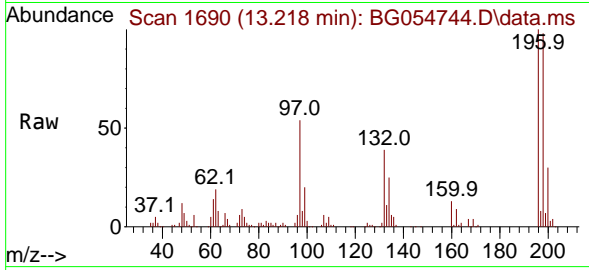
Tgt Ion:330 Resp: 238025
 Ion Ratio Lower Upper
 330 100
 332 98.1 79.8 119.6
 141 33.4 26.8 40.2



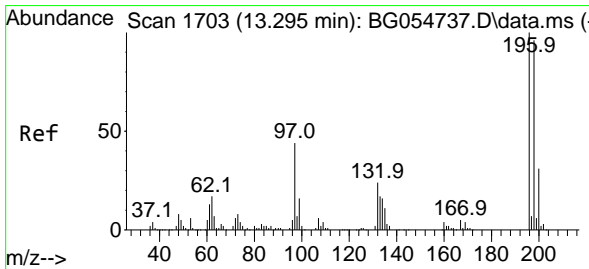
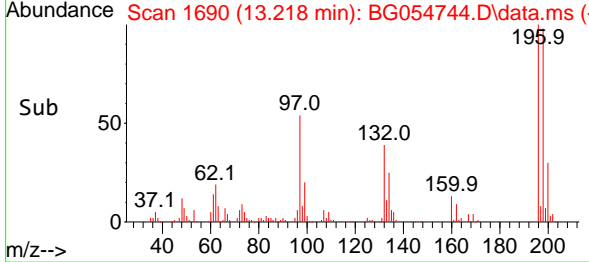
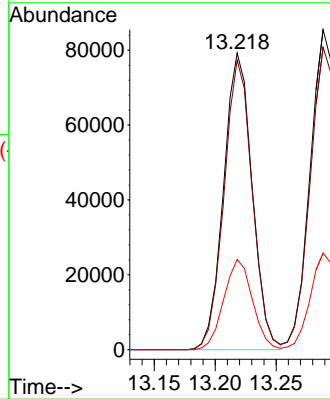


#43
 2,4,6-Trichlorophenol
 Concen: 45.449 ng
 RT: 13.218 min Scan# 1
 Delta R.T. -0.006 min
 Lab File: BG054744.D
 Acq: 25 Aug 2022 20:31

Instrument :
 BNA_G
 ClientSampleId :
 PB147245BS

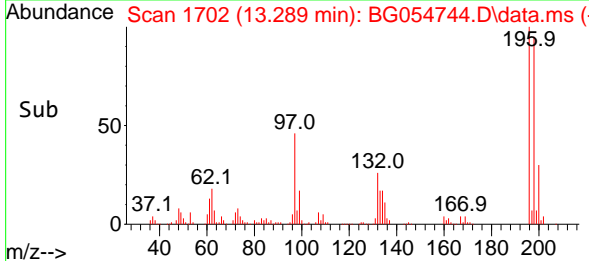
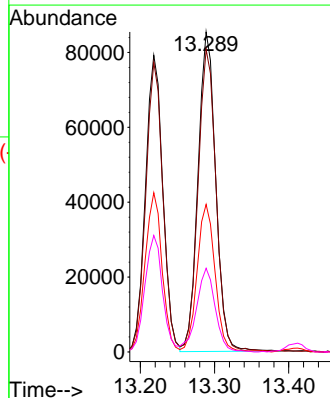
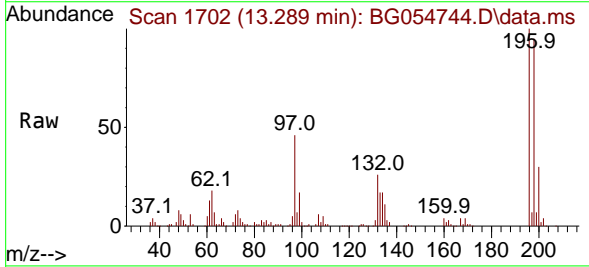


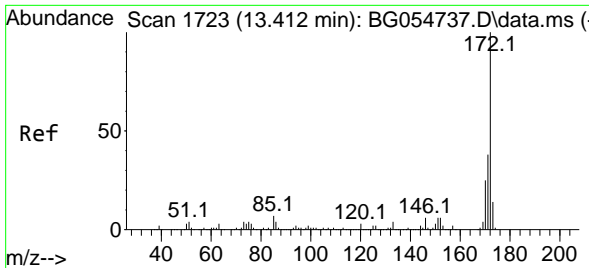
Tgt Ion:196 Resp: 129121
 Ion Ratio Lower Upper
 196 100
 198 97.6 77.1 115.7
 200 30.4 24.2 36.4



#44
 2,4,5-Trichlorophenol
 Concen: 44.363 ng
 RT: 13.289 min Scan# 1702
 Delta R.T. -0.006 min
 Lab File: BG054744.D
 Acq: 25 Aug 2022 20:31

Tgt Ion:196 Resp: 141542
 Ion Ratio Lower Upper
 196 100
 198 94.6 76.7 115.1
 97 46.1 36.6 55.0
 132 26.1 19.5 29.3

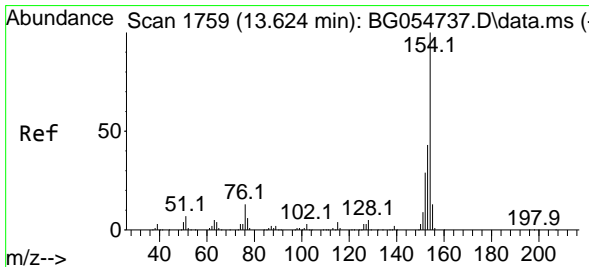
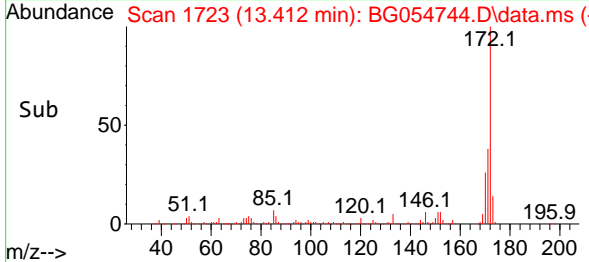
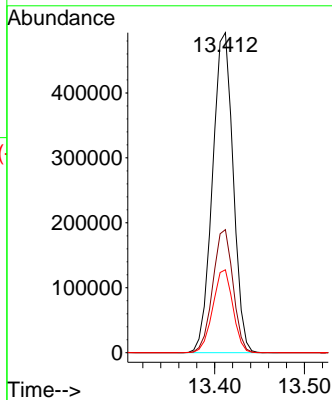
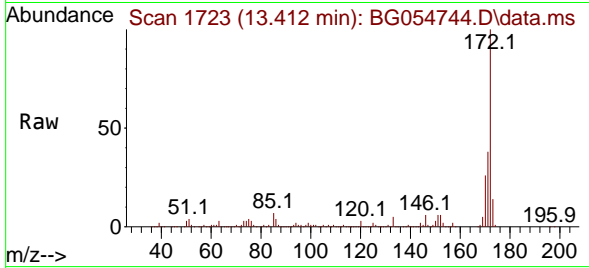




#45
 2-Fluorobiphenyl
 Concen: 83.250 ng
 RT: 13.412 min Scan# 11
 Delta R.T. -0.000 min
 Lab File: BG054744.D
 Acq: 25 Aug 2022 20:31

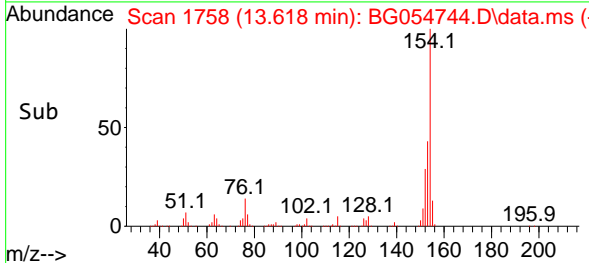
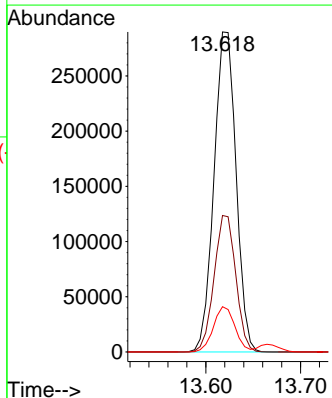
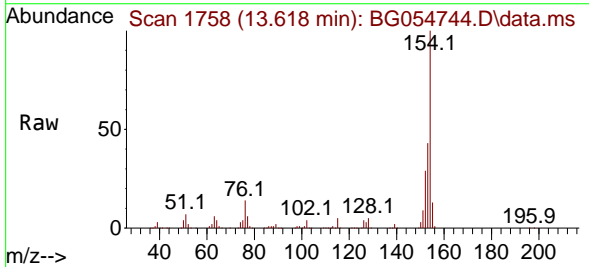
Instrument :
 BNA_G
 ClientSampleId :
 PB147245BS

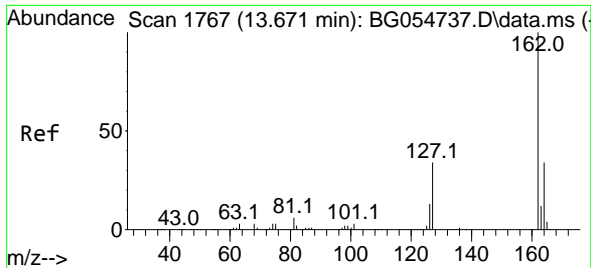
Tgt Ion:172 Resp: 786473
 Ion Ratio Lower Upper
 172 100
 171 38.4 31.2 46.8
 170 25.9 20.6 30.8



#46
 1,1'-Biphenyl
 Concen: 44.431 ng
 RT: 13.618 min Scan# 1758
 Delta R.T. -0.006 min
 Lab File: BG054744.D
 Acq: 25 Aug 2022 20:31

Tgt Ion:154 Resp: 468497
 Ion Ratio Lower Upper
 154 100
 153 42.7 22.2 62.2
 76 14.1 0.0 34.0



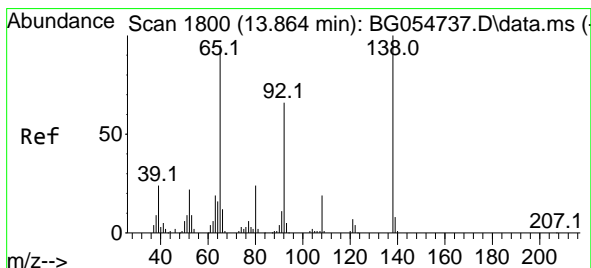
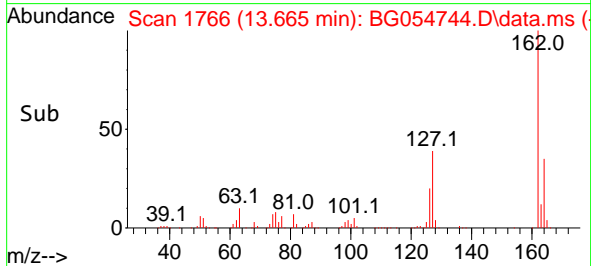
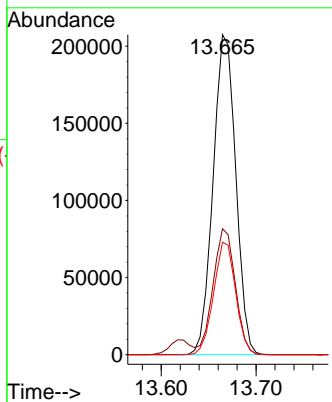
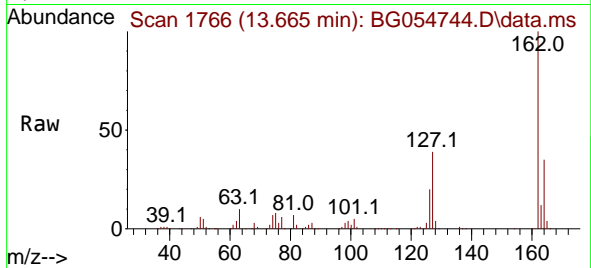


#47
 2-Chloronaphthalene
 Concen: 43.058 ng
 RT: 13.665 min Scan# 1766
 Delta R.T. -0.006 min
 Lab File: BG054744.D
 Acq: 25 Aug 2022 20:31

Instrument : BNA_G
 ClientSampleId : PB147245BS

Tgt Ion:162 Resp: 344810

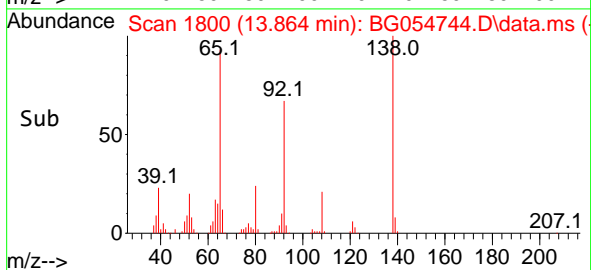
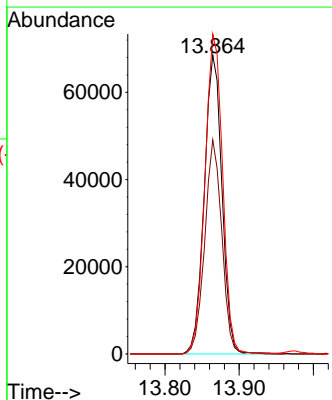
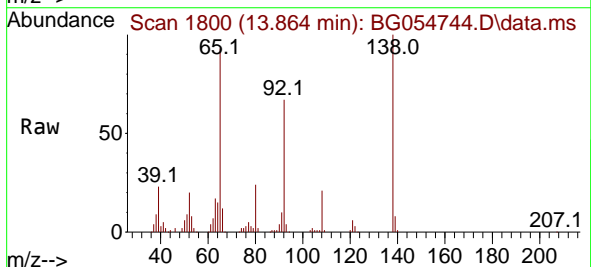
Ion	Ratio	Lower	Upper
162	100		
127	39.3	31.5	47.3
164	35.1	27.8	41.6

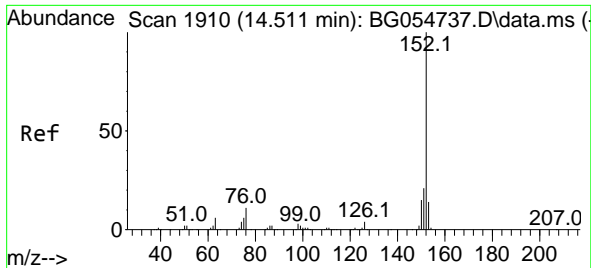


#48
 2-Nitroaniline
 Concen: 45.257 ng
 RT: 13.864 min Scan# 1800
 Delta R.T. -0.000 min
 Lab File: BG054744.D
 Acq: 25 Aug 2022 20:31

Tgt Ion: 65 Resp: 113580

Ion	Ratio	Lower	Upper
65	100		
92	71.6	54.7	82.1
138	107.1	84.1	126.1

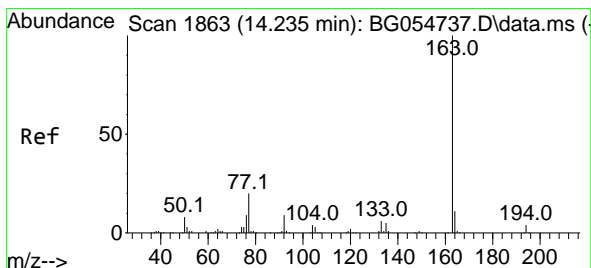
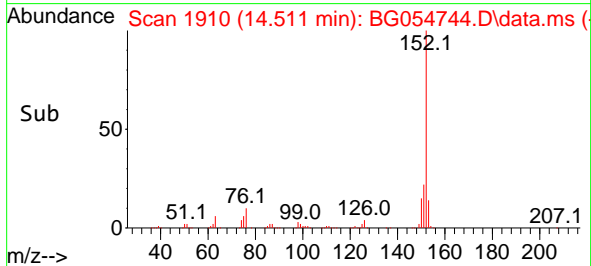
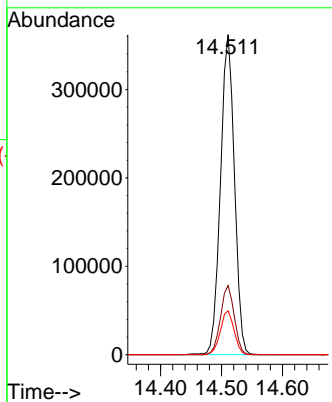
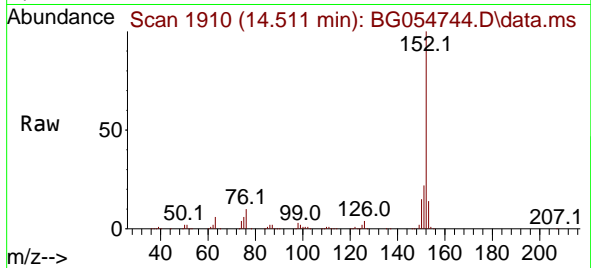




#49
 Acenaphthylene
 Concen: 43.500 ng
 RT: 14.511 min Scan# 1910
 Delta R.T. -0.000 min
 Lab File: BG054744.D
 Acq: 25 Aug 2022 20:31

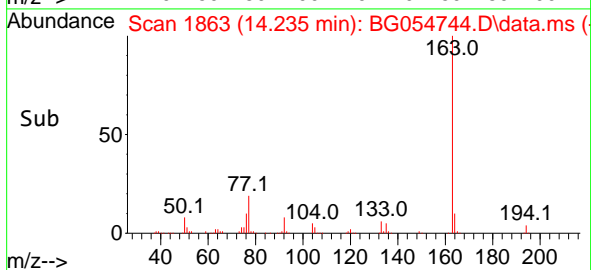
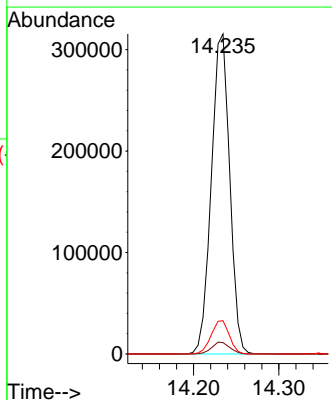
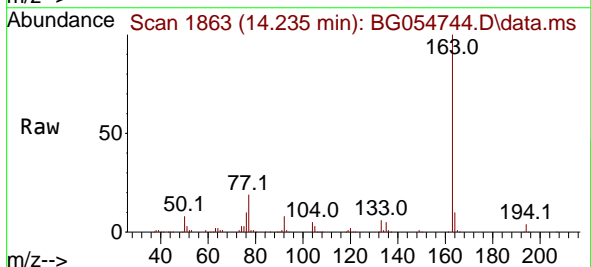
Instrument : BNA_G
 ClientSampleId : PB147245BS

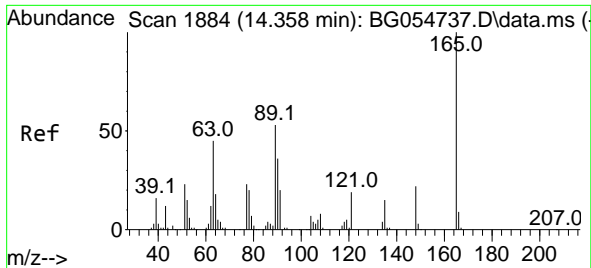
Tgt Ion	Resp	Lower	Upper
152	574832	100	100
151	21.6	17.3	25.9
153	13.7	10.8	16.2



#50
 Dimethylphthalate
 Concen: 43.155 ng
 RT: 14.235 min Scan# 1863
 Delta R.T. -0.000 min
 Lab File: BG054744.D
 Acq: 25 Aug 2022 20:31

Tgt Ion	Resp	Lower	Upper
163	472081	100	100
194	3.6	3.0	4.4
164	10.4	8.0	12.0

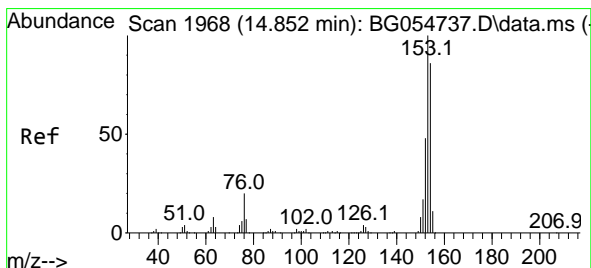
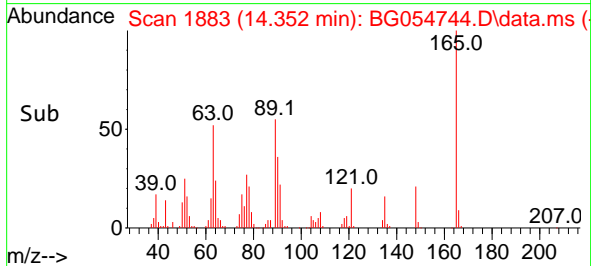
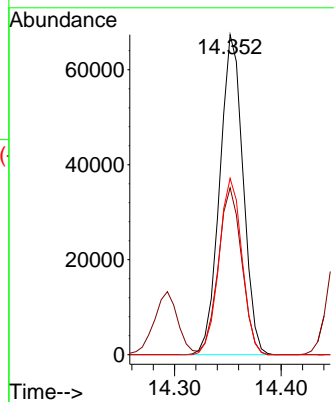
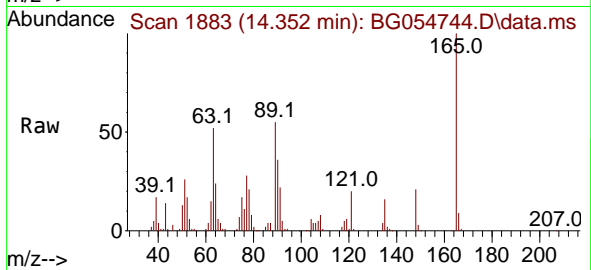




#51
 2,6-Dinitrotoluene
 Concen: 45.742 ng
 RT: 14.352 min Scan# 1883
 Delta R.T. -0.006 min
 Lab File: BG054744.D
 Acq: 25 Aug 2022 20:31

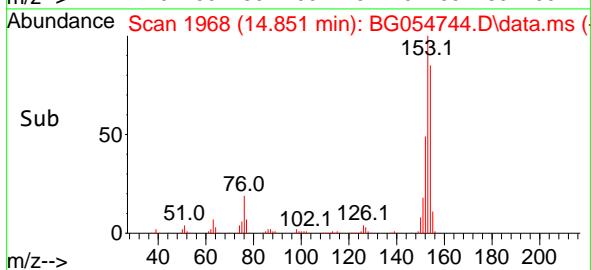
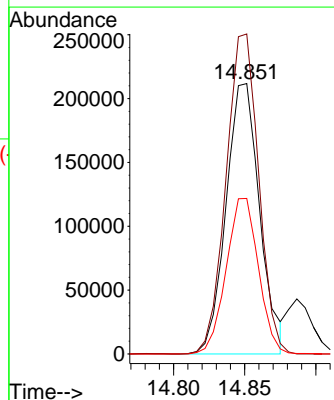
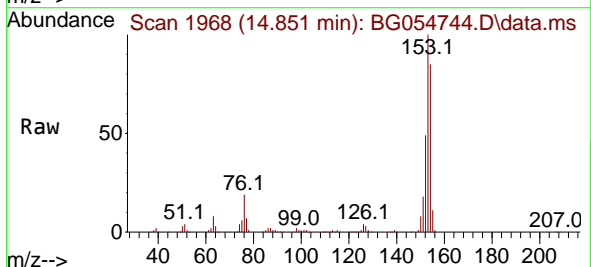
Instrument :
 BNA_G
 ClientSampleId :
 PB147245BS

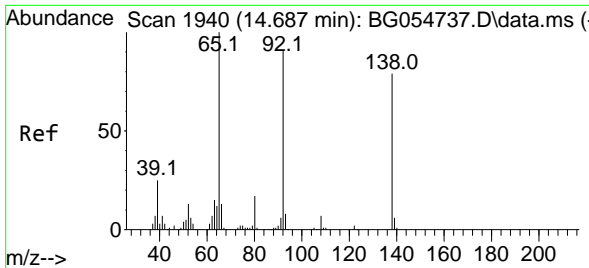
Tgt Ion:165 Resp: 102347
 Ion Ratio Lower Upper
 165 100
 63 52.1 46.0 69.0
 89 55.1 50.3 75.5



#52
 Acenaphthene
 Concen: 41.118 ng
 RT: 14.851 min Scan# 1968
 Delta R.T. -0.000 min
 Lab File: BG054744.D
 Acq: 25 Aug 2022 20:31

Tgt Ion:154 Resp: 349030
 Ion Ratio Lower Upper
 154 100
 153 118.3 92.8 139.2
 152 57.5 45.4 68.2

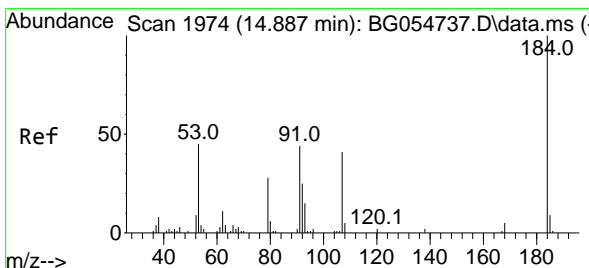
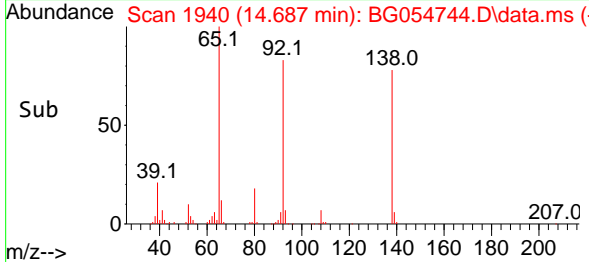
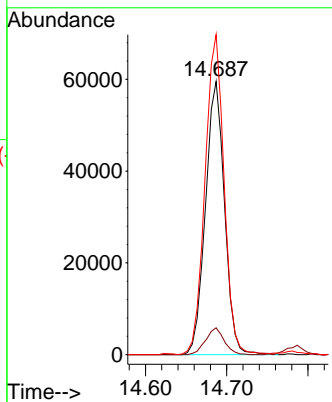
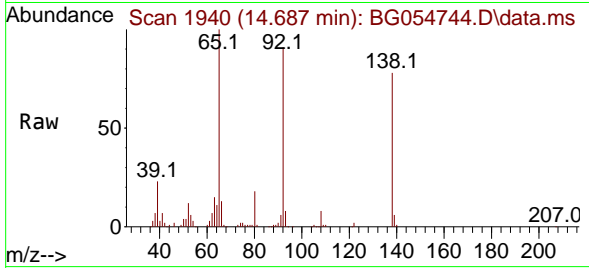




#53
 3-Nitroaniline
 Concen: 38.778 ng
 RT: 14.687 min Scan# 1940
 Delta R.T. -0.000 min
 Lab File: BG054744.D
 Acq: 25 Aug 2022 20:31

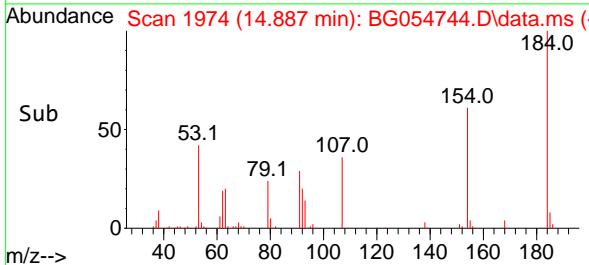
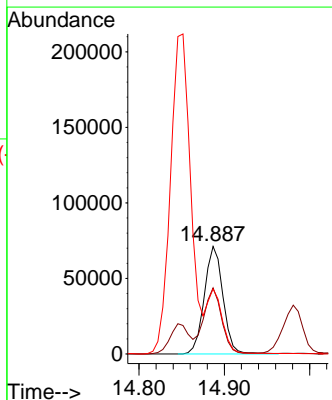
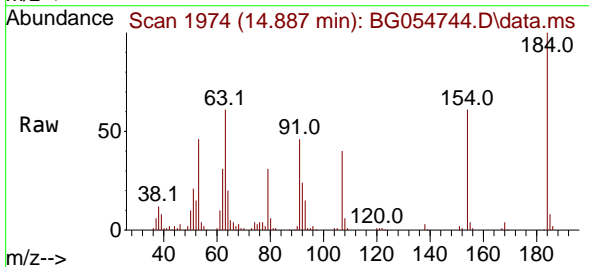
Instrument :
 BNA_G
 ClientSampleId :
 PB147245BS

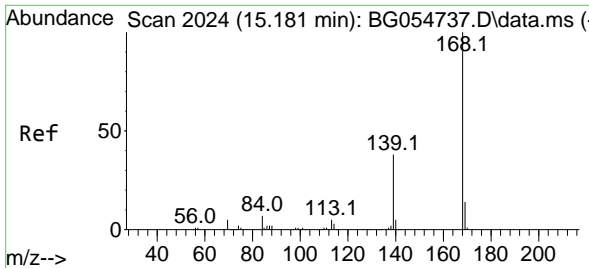
Tgt Ion:138 Resp: 97128
 Ion Ratio Lower Upper
 138 100
 108 9.8 7.6 11.4
 92 117.1 96.0 144.0



#54
 2,4-Dinitrophenol
 Concen: 85.310 ng
 RT: 14.887 min Scan# 1974
 Delta R.T. -0.000 min
 Lab File: BG054744.D
 Acq: 25 Aug 2022 20:31

Tgt Ion:184 Resp: 108337
 Ion Ratio Lower Upper
 184 100
 63 61.5 41.8 62.8
 154 60.6 45.2 67.8

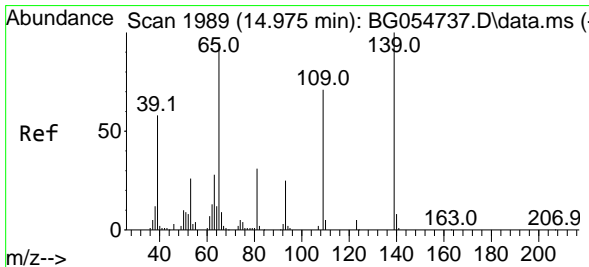
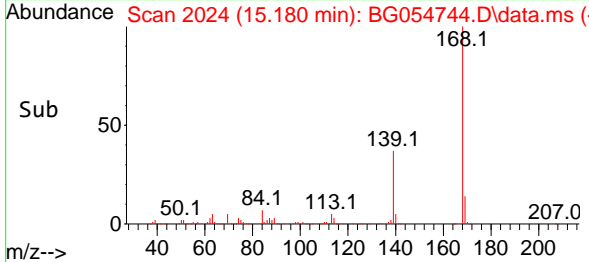
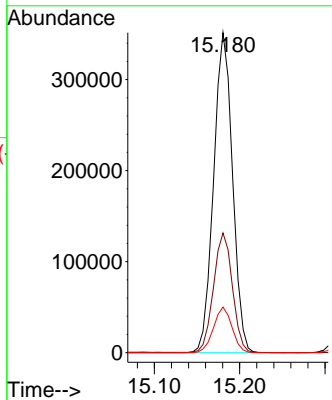
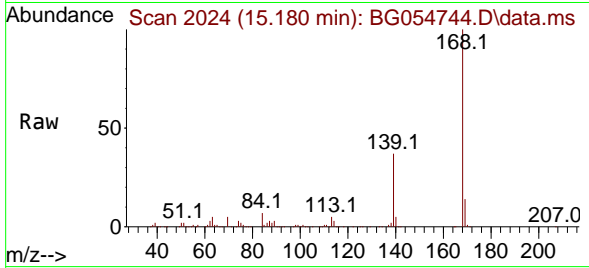




#55
 Dibenzofuran
 Concen: 43.252 ng
 RT: 15.180 min Scan# 20
 Delta R.T. -0.000 min
 Lab File: BG054744.D
 Acq: 25 Aug 2022 20:31

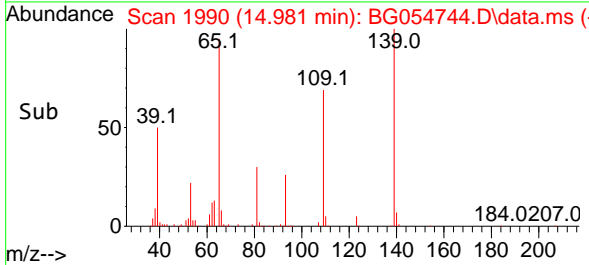
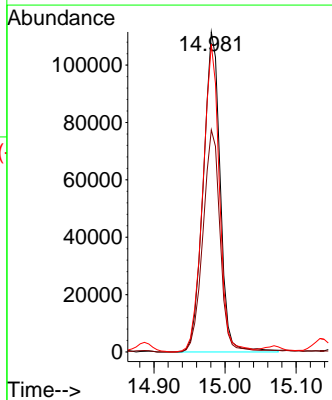
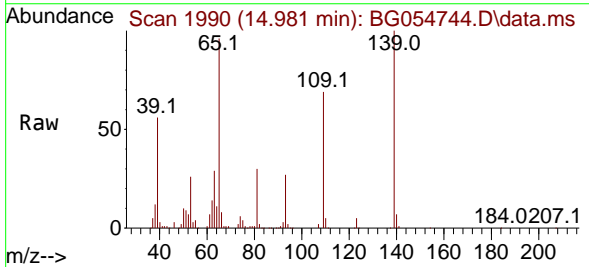
Instrument :
 BNA_G
 ClientSampleId :
 PB147245BS

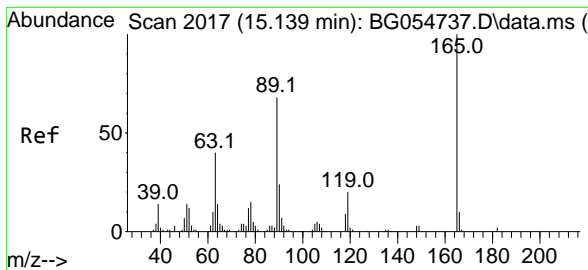
Tgt Ion:168 Resp: 539488
 Ion Ratio Lower Upper
 168 100
 139 37.4 30.2 45.2
 169 14.2 11.3 16.9



#56
 4-Nitrophenol
 Concen: 95.371 ng
 RT: 14.981 min Scan# 1990
 Delta R.T. 0.006 min
 Lab File: BG054744.D
 Acq: 25 Aug 2022 20:31

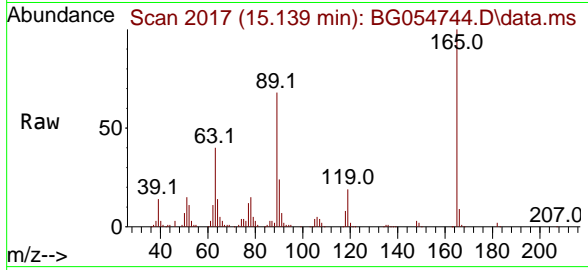
Tgt Ion:139 Resp: 184860
 Ion Ratio Lower Upper
 139 100
 109 69.4 50.5 90.5
 65 96.1 79.9 119.9





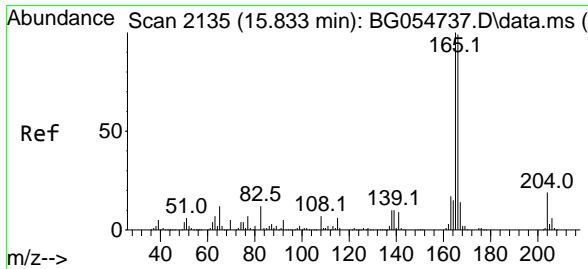
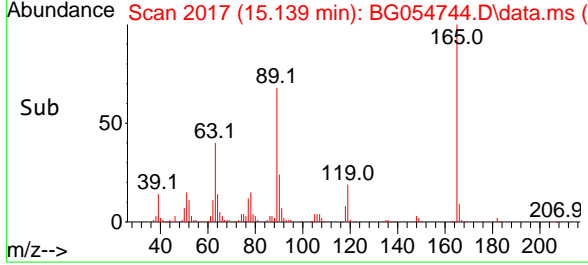
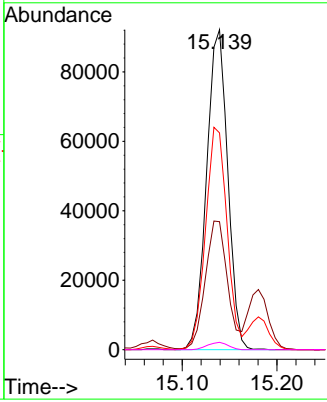
#57
 2,4-Dinitrotoluene
 Concen: 46.112 ng
 RT: 15.139 min Scan# 20
 Delta R.T. -0.000 min
 Lab File: BG054744.D
 Acq: 25 Aug 2022 20:31

Instrument : BNA_G
 ClientSampleId : PB147245BS



Tgt Ion:165 Resp: 142710

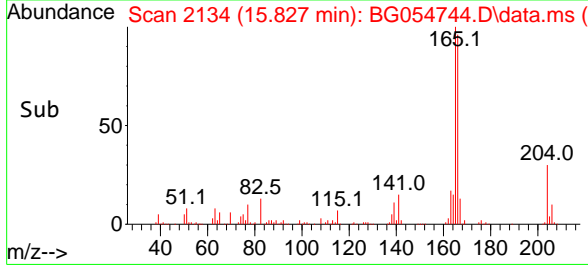
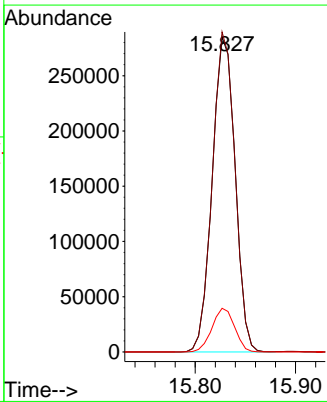
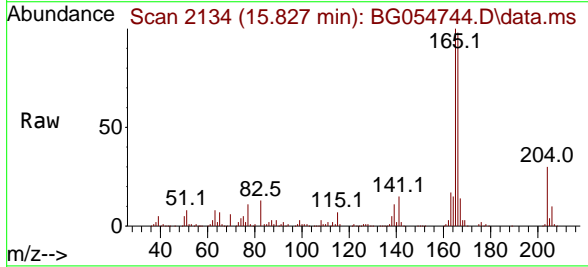
Ion	Ratio	Lower	Upper
165	100		
63	40.0	36.8	55.2
89	67.8	64.3	96.5
182	2.3	1.8	2.6

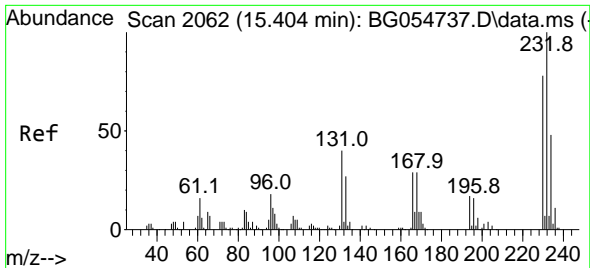


#58
 Fluorene
 Concen: 42.991 ng
 RT: 15.827 min Scan# 2134
 Delta R.T. -0.006 min
 Lab File: BG054744.D
 Acq: 25 Aug 2022 20:31

Tgt Ion:166 Resp: 451741

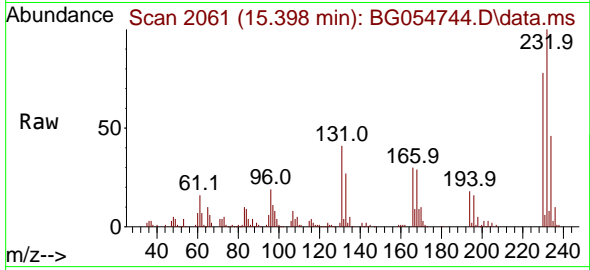
Ion	Ratio	Lower	Upper
166	100		
165	101.6	80.8	121.2
167	13.9	11.4	17.0



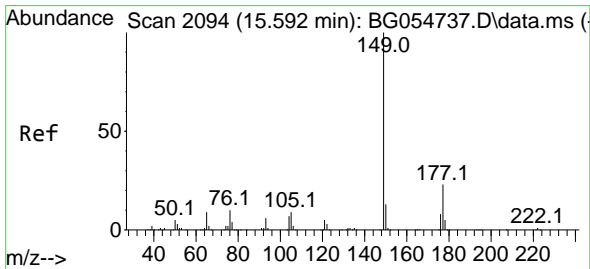
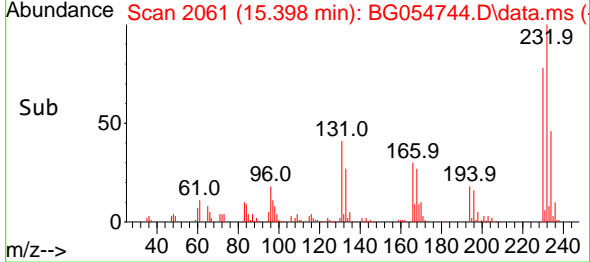
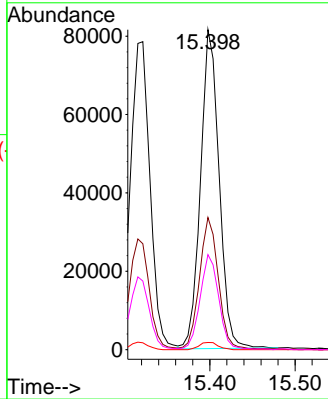


#59
 2,3,4,6-Tetrachlorophenol
 Concen: 42.912 ng
 RT: 15.398 min Scan# 2061
 Delta R.T. -0.006 min
 Lab File: BG054744.D
 Acq: 25 Aug 2022 20:31

Instrument : BNA_G
 ClientSampleId : PB147245BS

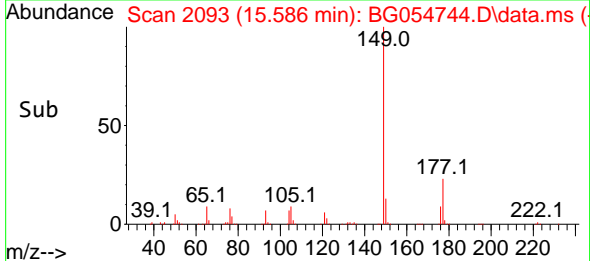
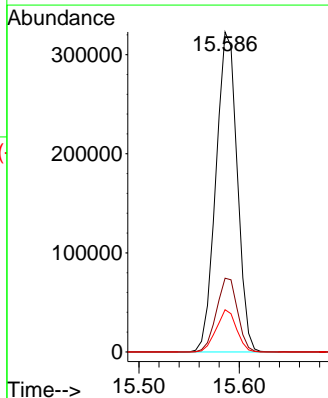
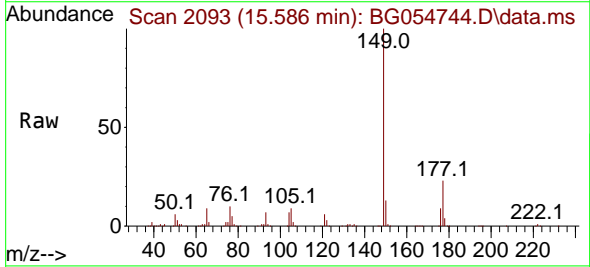


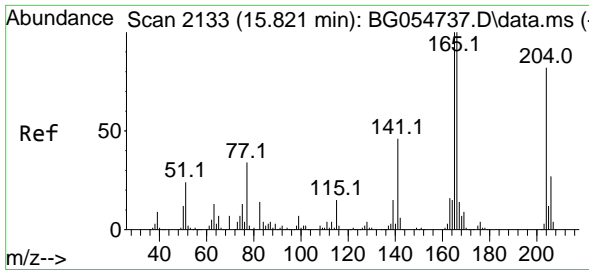
Tgt Ion:232 Resp: 123420
 Ion Ratio Lower Upper
 232 100
 131 42.6 31.3 46.9
 130 2.3 1.8 2.6
 166 30.2 23.1 34.7



#60
 Diethylphthalate
 Concen: 43.467 ng
 RT: 15.586 min Scan# 2093
 Delta R.T. -0.006 min
 Lab File: BG054744.D
 Acq: 25 Aug 2022 20:31

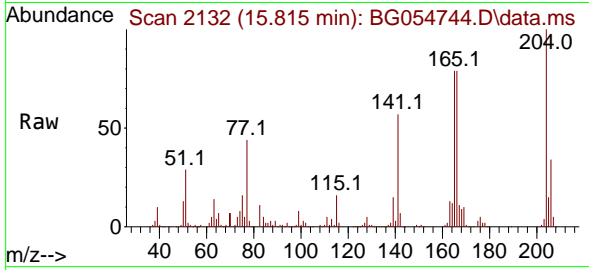
Tgt Ion:149 Resp: 474810
 Ion Ratio Lower Upper
 149 100
 177 23.0 17.8 26.6
 150 13.2 10.1 15.1



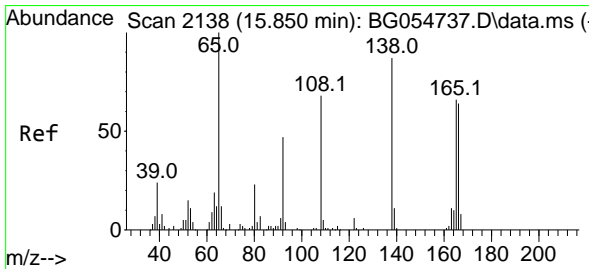
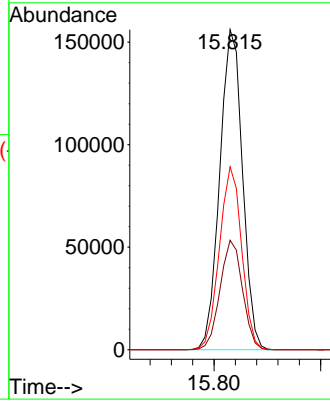
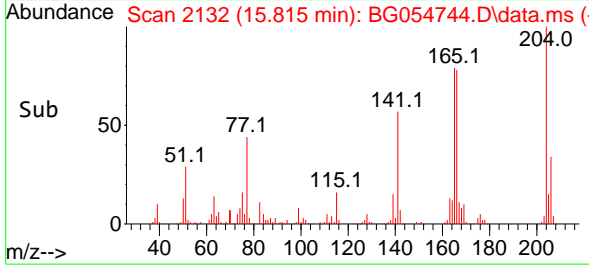


#61
 4-Chlorophenyl-phenylether
 Concen: 44.546 ng
 RT: 15.815 min Scan# 2132
 Delta R.T. -0.006 min
 Lab File: BG054744.D
 Acq: 25 Aug 2022 20:31

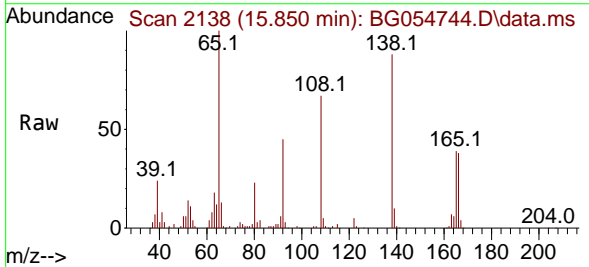
Instrument :
 BNA_G
 ClientSampleId :
 PB147245BS



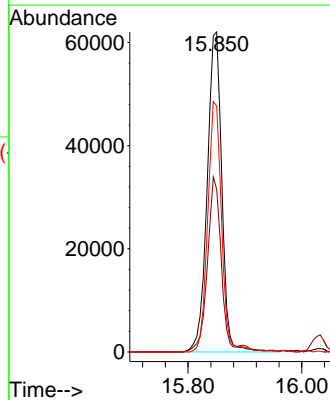
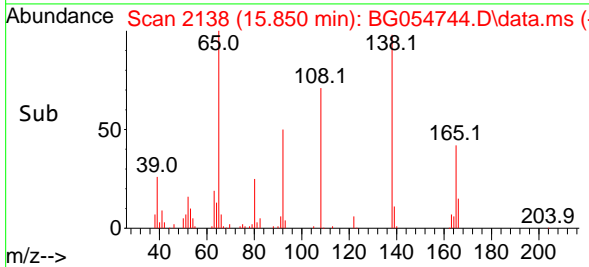
Tgt Ion: 204 Resp: 230907
 Ion Ratio Lower Upper
 204 100
 206 34.2 26.6 39.8
 141 57.1 44.9 67.3

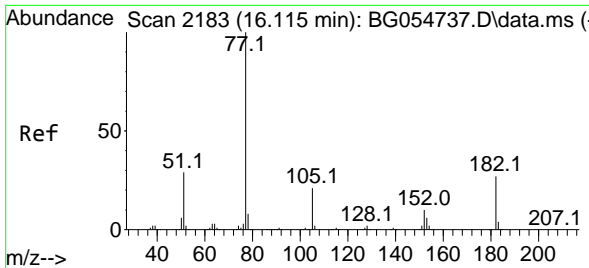


#62
 4-Nitroaniline
 Concen: 43.359 ng
 RT: 15.850 min Scan# 2138
 Delta R.T. -0.000 min
 Lab File: BG054744.D
 Acq: 25 Aug 2022 20:31



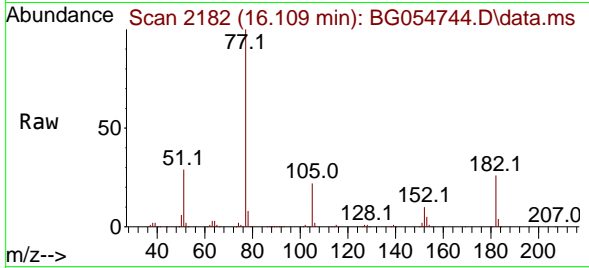
Tgt Ion: 138 Resp: 110880
 Ion Ratio Lower Upper
 138 100
 92 50.8 34.7 74.7
 108 76.9 56.2 96.2





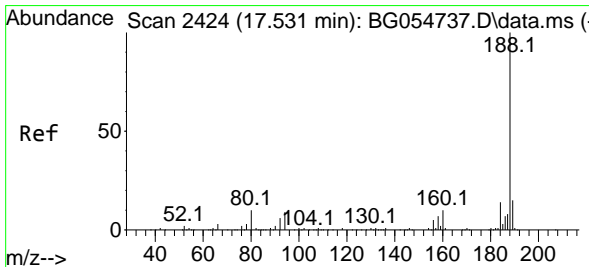
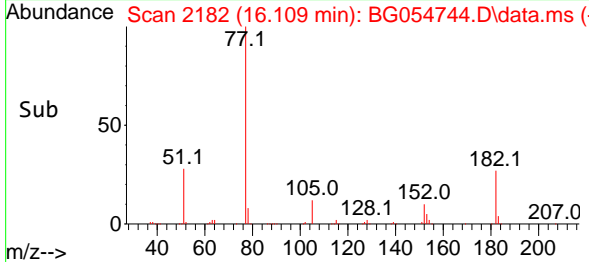
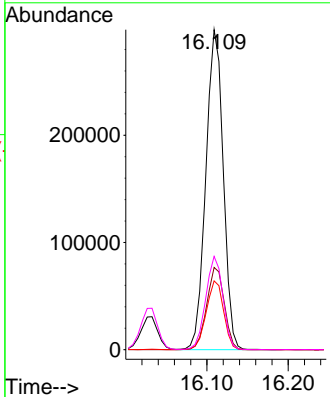
#63
 Azobenzene
 Concen: 42.770 ng
 RT: 16.109 min Scan# 2182
 Delta R.T. -0.006 min
 Lab File: BG054744.D
 Acq: 25 Aug 2022 20:31

Instrument : BNA_G
 ClientSampleId : PB147245BS



Tgt Ion: 77 Resp: 444008

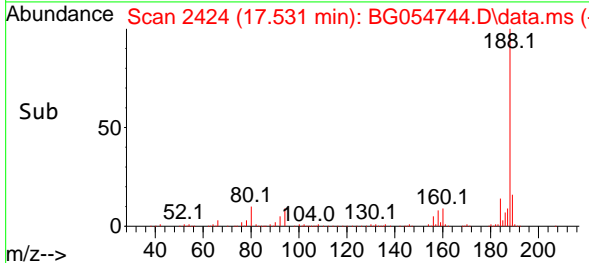
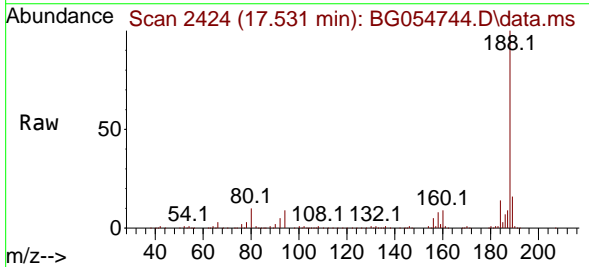
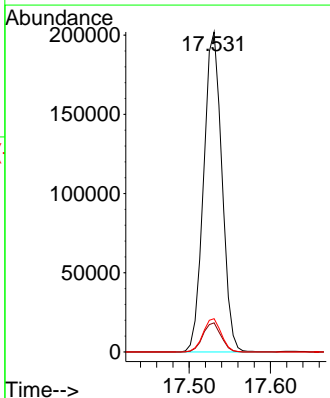
Ion	Ratio	Lower	Upper
77	100		
182	25.7	5.1	45.1
105	21.5	0.7	40.7
51	29.1	9.9	49.9

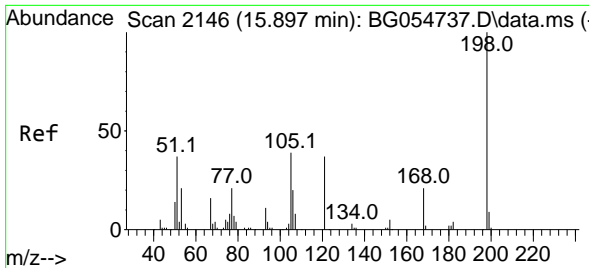


#64
 Phenanthrene-d10
 Concen: 20.000 ng
 RT: 17.531 min Scan# 2424
 Delta R.T. -0.000 min
 Lab File: BG054744.D
 Acq: 25 Aug 2022 20:31

Tgt Ion: 188 Resp: 314720

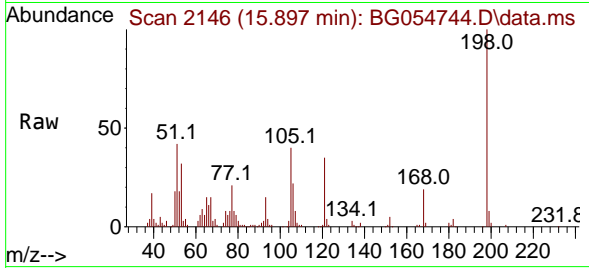
Ion	Ratio	Lower	Upper
188	100		
94	9.1	7.0	10.4
80	10.4	7.9	11.9



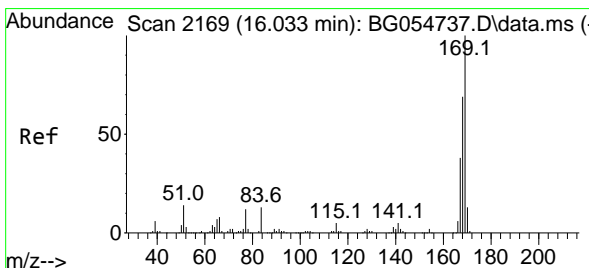
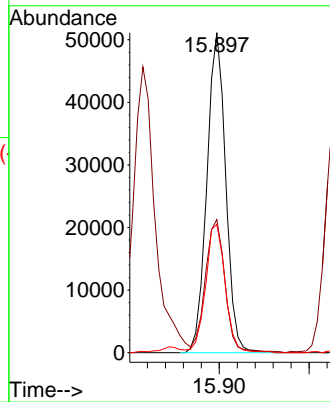
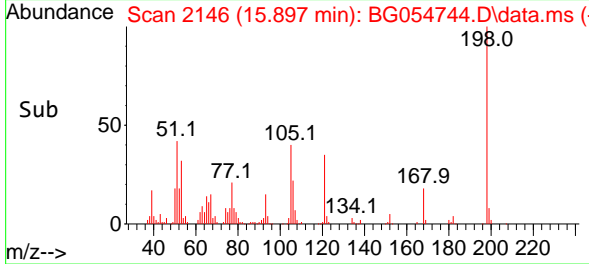


#65
 4,6-Dinitro-2-methylphenol
 Concen: 46.451 ng
 RT: 15.897 min Scan# 2146
 Delta R.T. -0.000 min
 Lab File: BG054744.D
 Acq: 25 Aug 2022 20:31

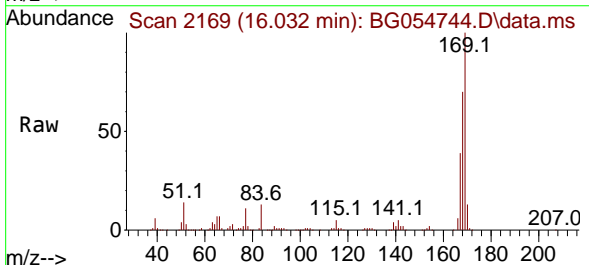
Instrument :
 BNA_G
 ClientSampleId :
 PB147245BS



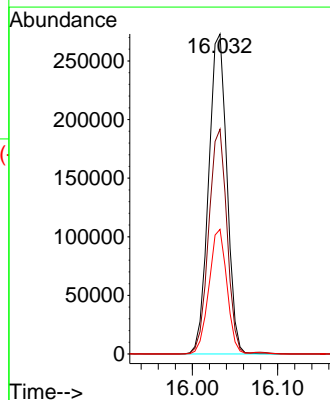
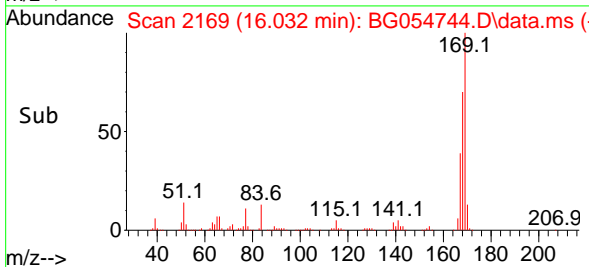
Tgt Ion:198 Resp: 74414
 Ion Ratio Lower Upper
 198 100
 51 41.6 19.9 59.9
 105 40.1 20.3 60.3

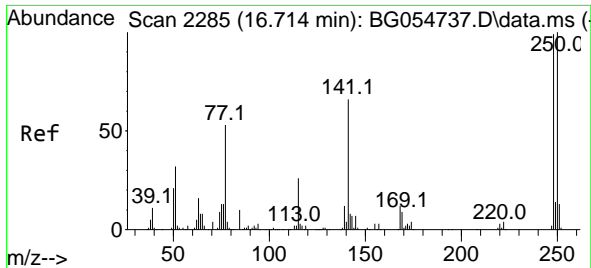


#66
 n-Nitrosodiphenylamine
 Concen: 44.748 ng
 RT: 16.032 min Scan# 2169
 Delta R.T. -0.000 min
 Lab File: BG054744.D
 Acq: 25 Aug 2022 20:31



Tgt Ion:169 Resp: 406128
 Ion Ratio Lower Upper
 169 100
 168 70.3 55.6 83.4
 167 38.9 30.9 46.3

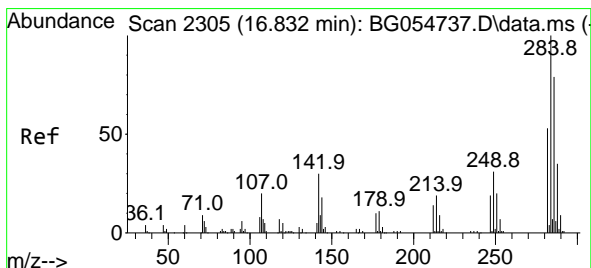
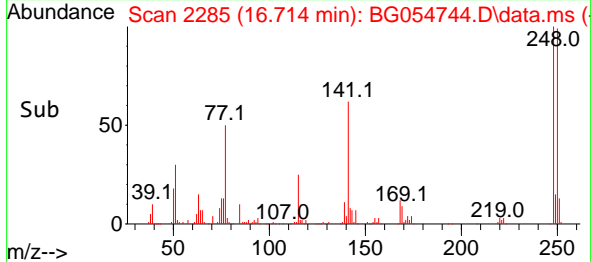
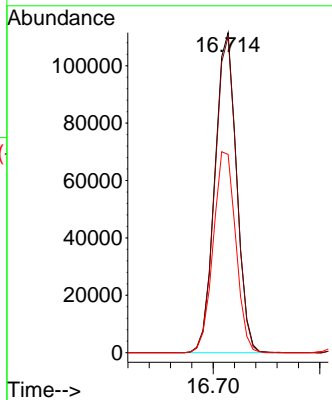
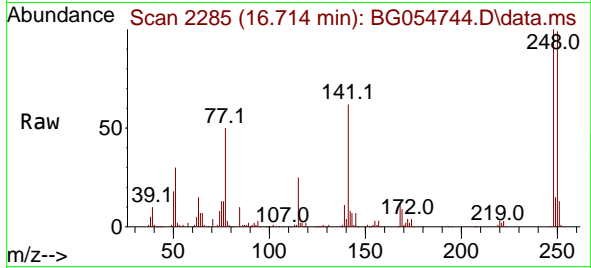




#67
 4-Bromophenyl-phenylether
 Concen: 45.568 ng
 RT: 16.714 min Scan# 21
 Delta R.T. -0.000 min
 Lab File: BG054744.D
 Acq: 25 Aug 2022 20:31

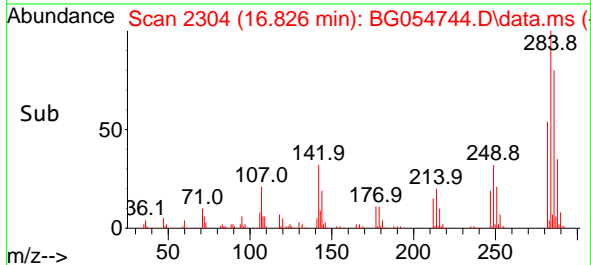
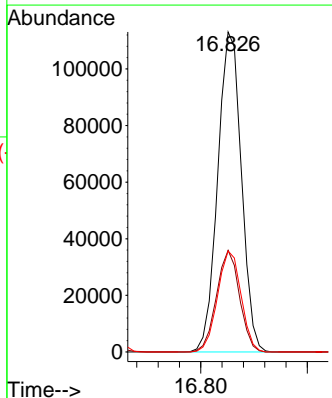
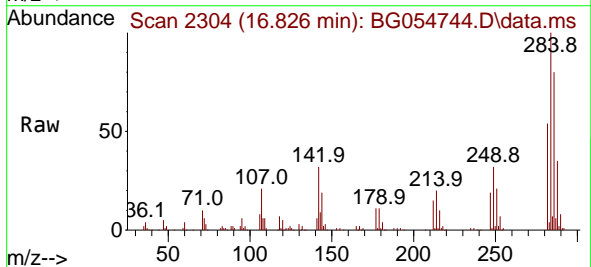
Instrument :
 BNA_G
 ClientSampleId :
 PB147245BS

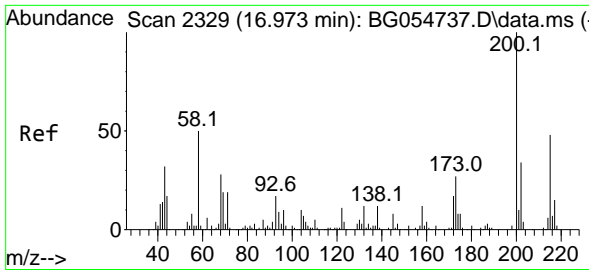
Tgt Ion	Resp	Lower	Upper
248	157454		
248	100		
250	98.7	78.8	118.2
141	62.0	51.9	77.9



#68
 Hexachlorobenzene
 Concen: 44.787 ng
 RT: 16.826 min Scan# 2304
 Delta R.T. -0.006 min
 Lab File: BG054744.D
 Acq: 25 Aug 2022 20:31

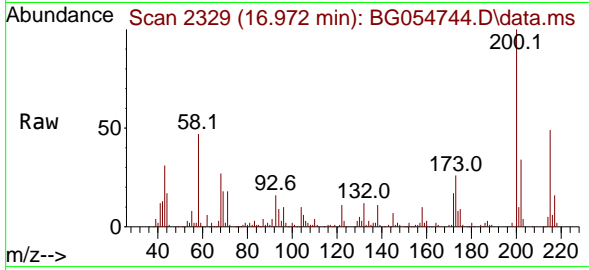
Tgt Ion	Resp	Lower	Upper
284	173972		
284	100		
142	31.8	25.0	37.6
249	31.6	24.5	36.7



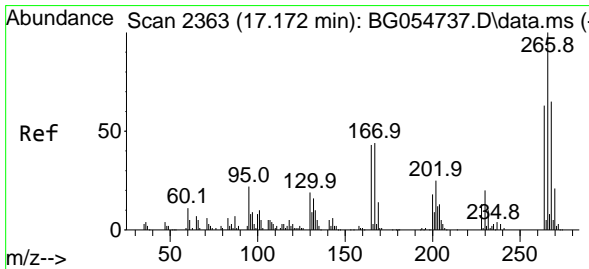
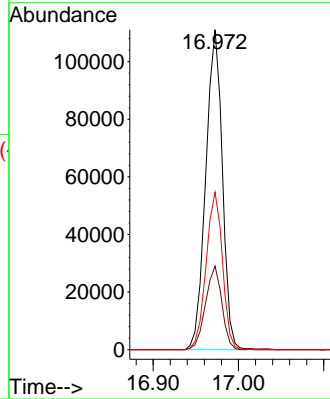
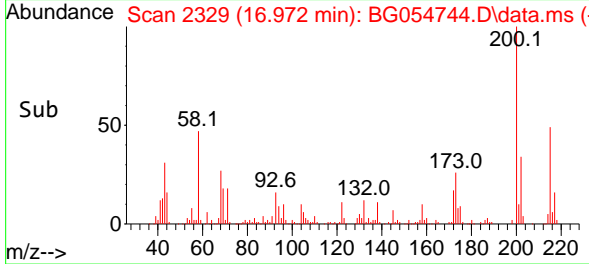


#69
 Atrazine
 Concen: 46.943 ng
 RT: 16.972 min Scan# 21
 Delta R.T. -0.000 min
 Lab File: BG054744.D
 Acq: 25 Aug 2022 20:31

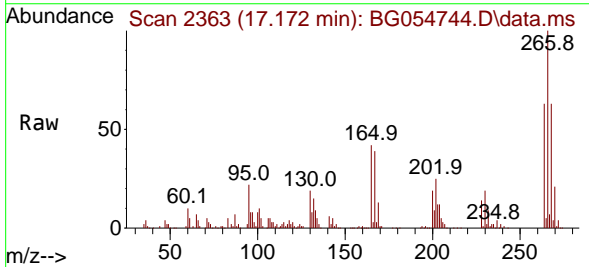
Instrument :
 BNA_G
 ClientSampleId :
 PB147245BS



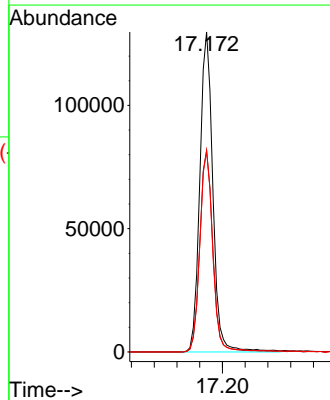
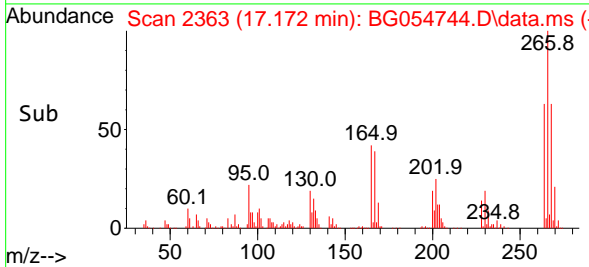
Tgt Ion:200 Resp: 150308
 Ion Ratio Lower Upper
 200 100
 173 26.1 5.6 45.6
 215 49.2 28.2 68.2

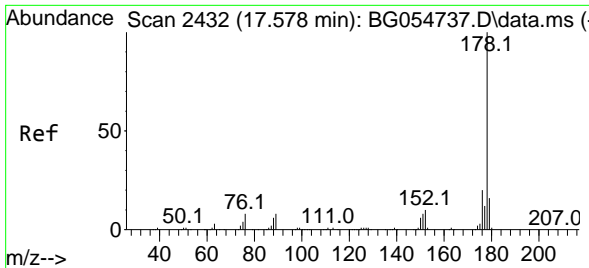


#70
 Pentachlorophenol
 Concen: 97.857 ng
 RT: 17.172 min Scan# 2363
 Delta R.T. -0.000 min
 Lab File: BG054744.D
 Acq: 25 Aug 2022 20:31



Tgt Ion:266 Resp: 206531
 Ion Ratio Lower Upper
 266 100
 268 62.9 51.2 76.8
 264 62.9 49.4 74.0



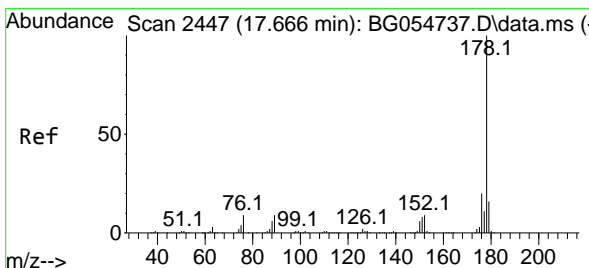
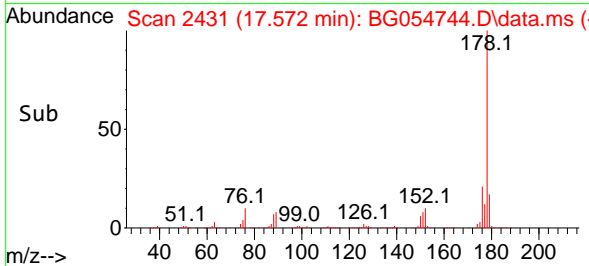
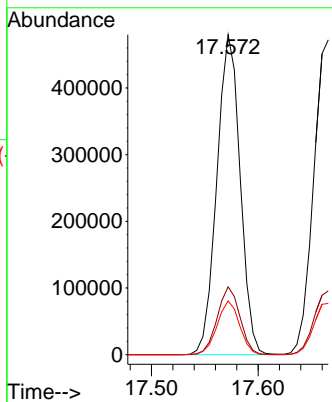
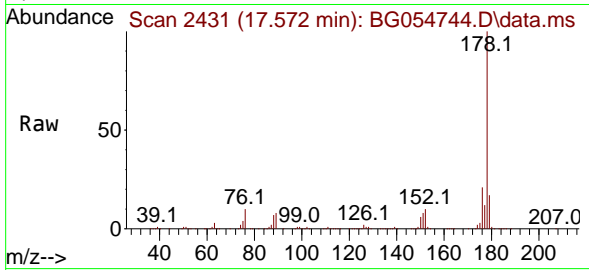


#71
 Phenanthrene
 Concen: 43.354 ng
 RT: 17.572 min Scan# 2432
 Delta R.T. -0.006 min
 Lab File: BG054744.D
 Acq: 25 Aug 2022 20:31

Instrument :
 BNA_G
 ClientSampleId :
 PB147245BS

Tgt Ion:178 Resp: 726851

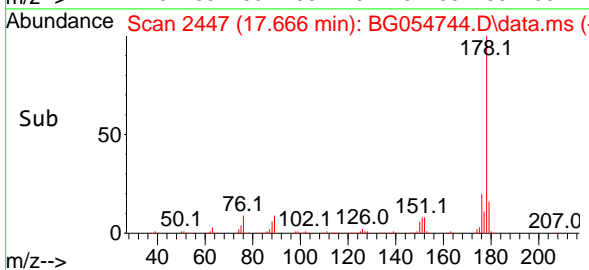
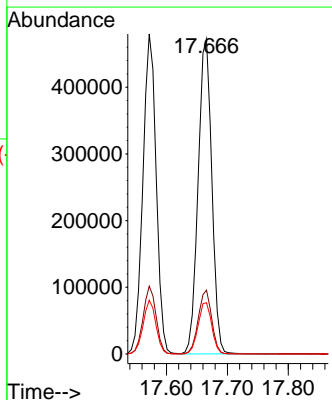
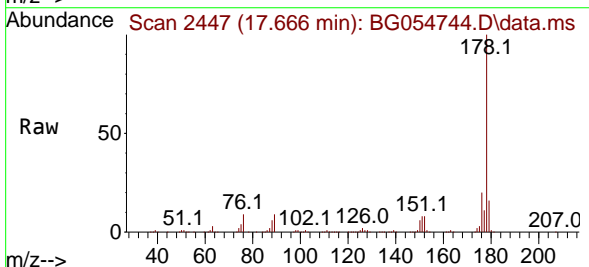
Ion	Ratio	Lower	Upper
178	100		
176	21.2	16.6	25.0
179	16.8	12.8	19.2

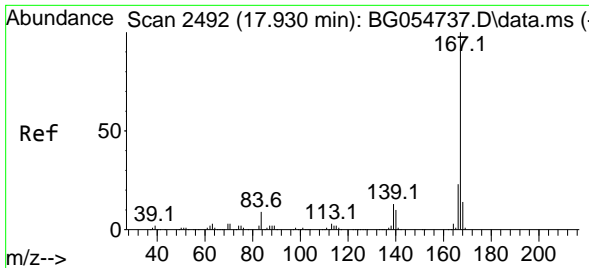


#72
 Anthracene
 Concen: 45.244 ng
 RT: 17.666 min Scan# 2447
 Delta R.T. -0.000 min
 Lab File: BG054744.D
 Acq: 25 Aug 2022 20:31

Tgt Ion:178 Resp: 737470

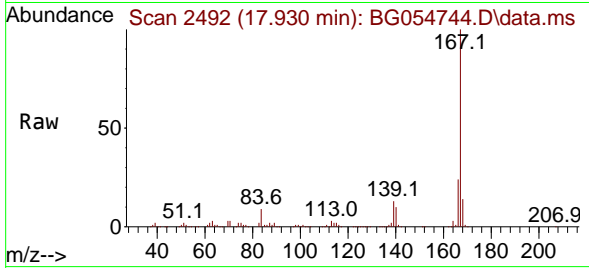
Ion	Ratio	Lower	Upper
178	100		
176	20.3	16.2	24.4
179	16.2	12.9	19.3



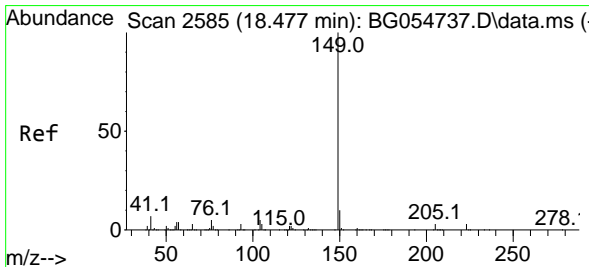
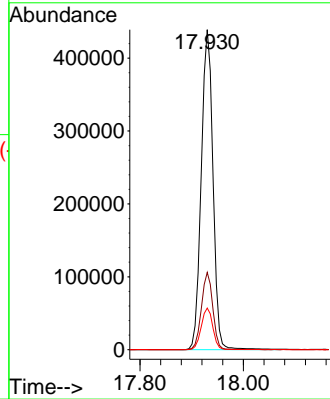
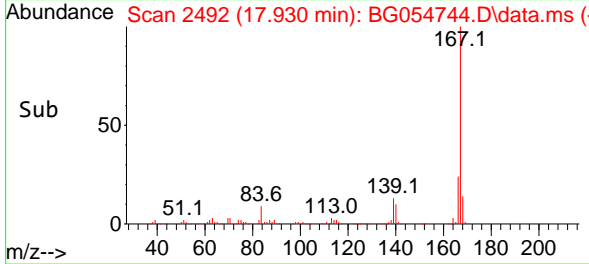


#73
 Carbazole
 Concen: 46.044 ng
 RT: 17.930 min Scan# 2492
 Delta R.T. -0.000 min
 Lab File: BG054744.D
 Acq: 25 Aug 2022 20:31

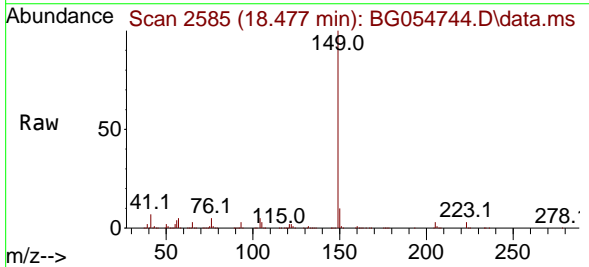
Instrument : BNA_G
 ClientSampleId : PB147245BS



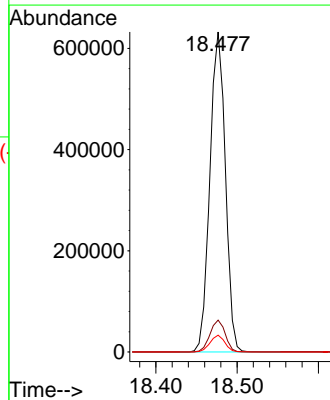
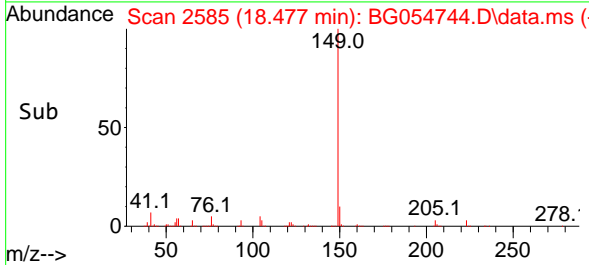
Tgt Ion:167 Resp: 691477
 Ion Ratio Lower Upper
 167 100
 166 24.2 18.8 28.2
 139 13.0 10.2 15.4

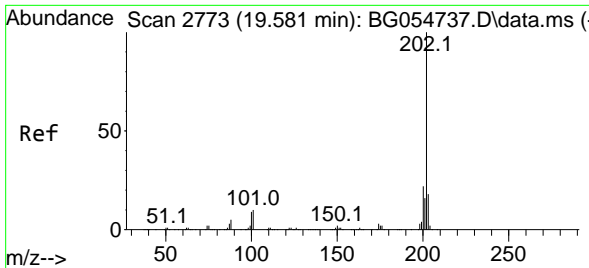


#74
 Di-n-butylphthalate
 Concen: 43.913 ng
 RT: 18.477 min Scan# 2585
 Delta R.T. -0.000 min
 Lab File: BG054744.D
 Acq: 25 Aug 2022 20:31



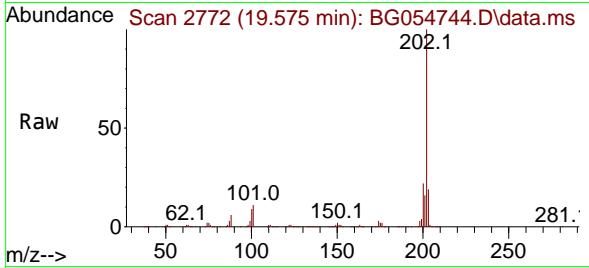
Tgt Ion:149 Resp: 834498
 Ion Ratio Lower Upper
 149 100
 150 10.0 8.0 12.0
 104 5.2 4.4 6.6



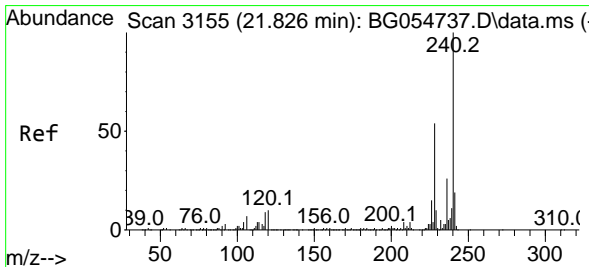
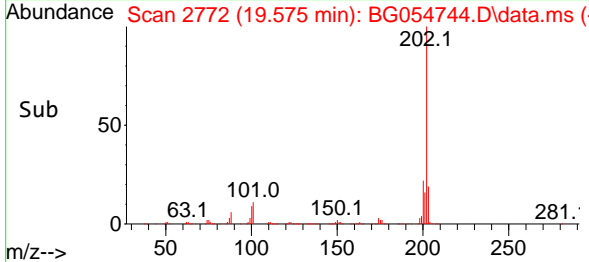
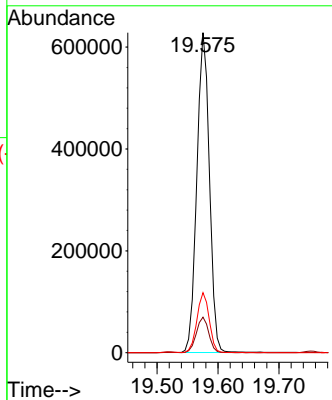


#75
 Fluoranthene
 Concen: 43.904 ng
 RT: 19.575 min Scan# 21
 Delta R.T. -0.006 min
 Lab File: BG054744.D
 Acq: 25 Aug 2022 20:31

Instrument :
 BNA_G
 ClientSampleId :
 PB147245BS

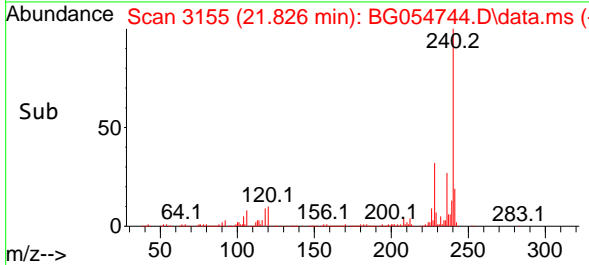
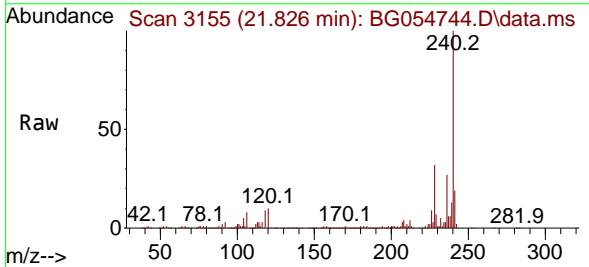
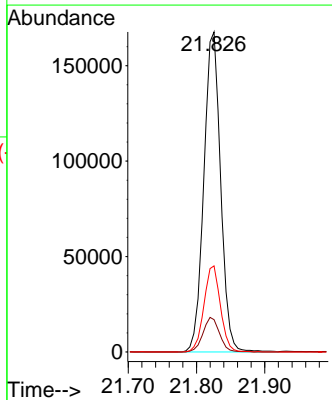


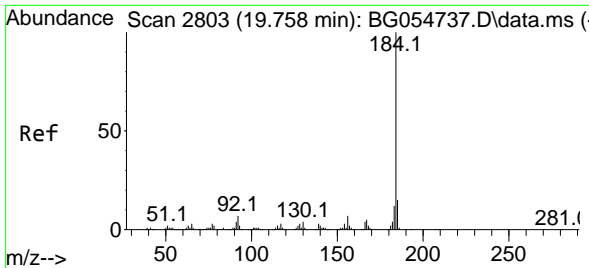
Tgt Ion:202 Resp: 895424
 Ion Ratio Lower Upper
 202 100
 101 11.1 0.0 31.4
 203 18.7 0.0 38.6



#76
 Chrysene-d12
 Concen: 20.000 ng
 RT: 21.826 min Scan# 3155
 Delta R.T. -0.000 min
 Lab File: BG054744.D
 Acq: 25 Aug 2022 20:31

Tgt Ion:240 Resp: 286561
 Ion Ratio Lower Upper
 240 100
 120 10.1 8.2 12.4
 236 26.9 21.2 31.8

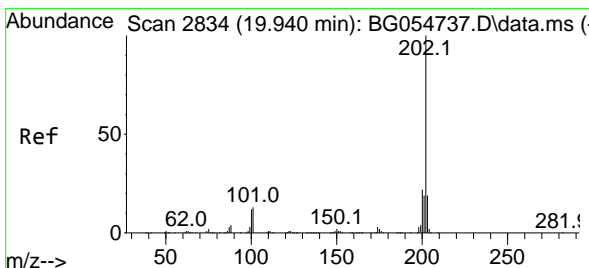
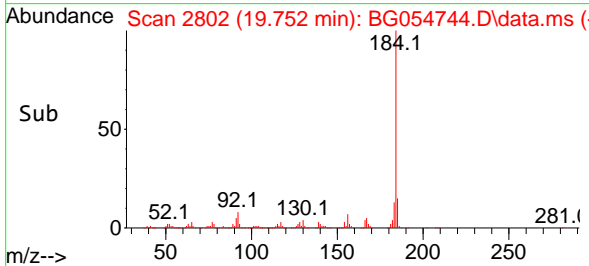
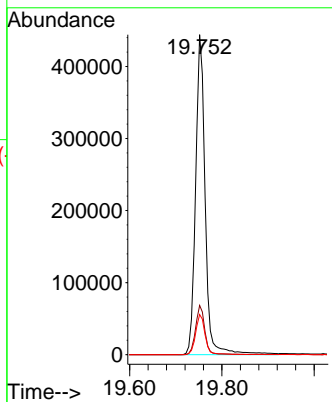
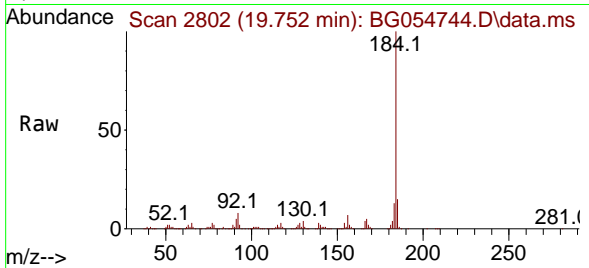




#77
 Benzidine
 Concen: 90.212 ng
 RT: 19.752 min Scan# 2802
 Delta R.T. -0.006 min
 Lab File: BG054744.D
 Acq: 25 Aug 2022 20:31

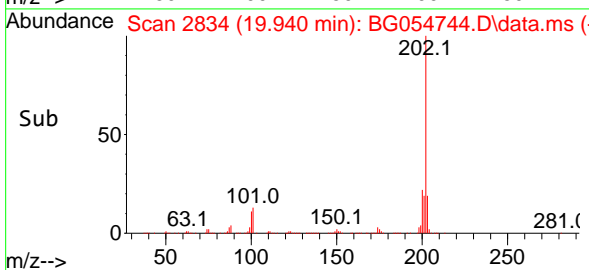
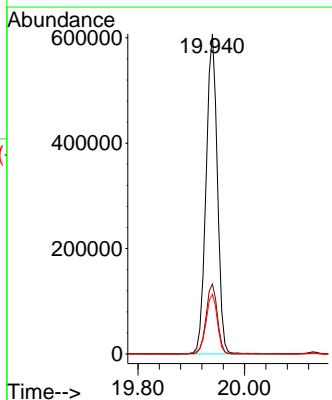
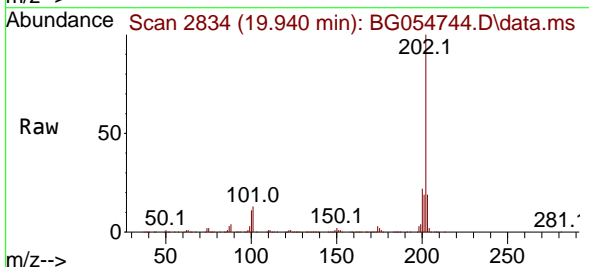
Instrument :
 BNA_G
 ClientSampleId :
 PB147245BS

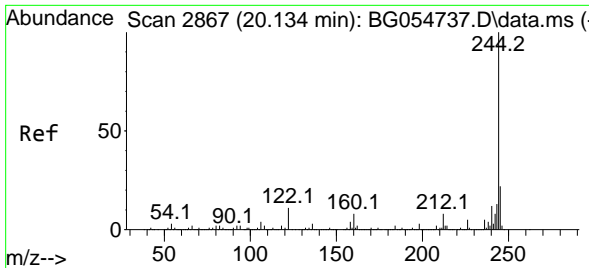
Tgt Ion:184 Resp: 640305
 Ion Ratio Lower Upper
 184 100
 185 15.4 11.4 17.0
 183 12.6 9.8 14.8



#78
 Pyrene
 Concen: 44.633 ng
 RT: 19.940 min Scan# 2834
 Delta R.T. -0.000 min
 Lab File: BG054744.D
 Acq: 25 Aug 2022 20:31

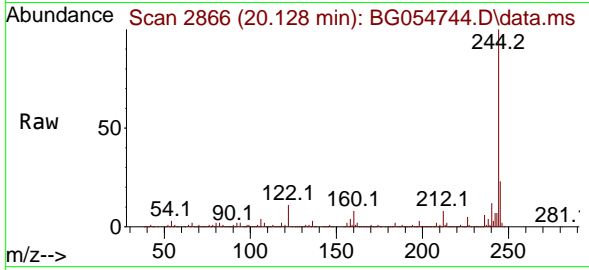
Tgt Ion:202 Resp: 891849
 Ion Ratio Lower Upper
 202 100
 200 21.9 17.8 26.6
 203 18.6 14.6 21.8



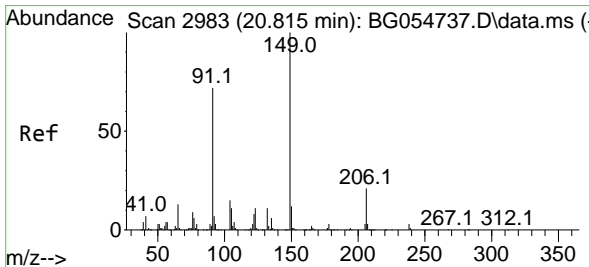
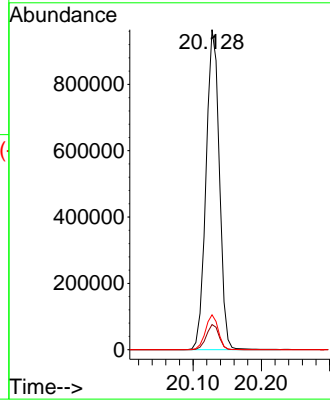
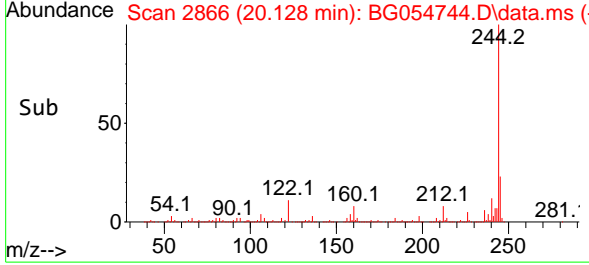


#79
 Terphenyl-d14
 Concen: 90.605 ng
 RT: 20.128 min Scan# 21
 Delta R.T. -0.006 min
 Lab File: BG054744.D
 Acq: 25 Aug 2022 20:31

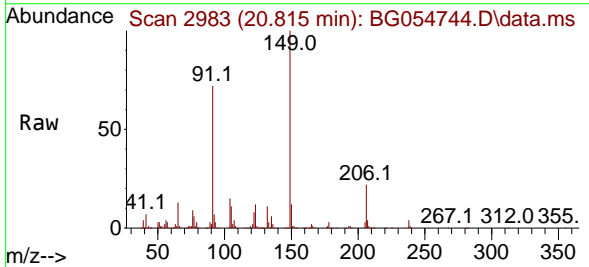
Instrument :
 BNA_G
 ClientSampleId :
 PB147245BS



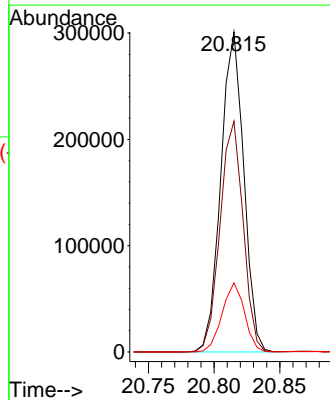
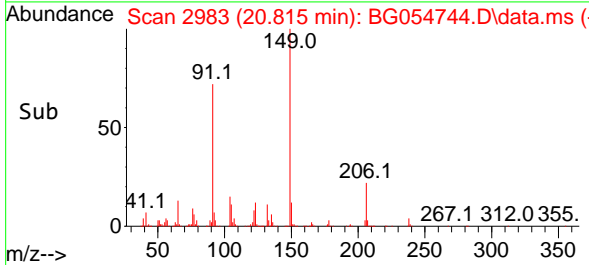
Tgt Ion:244 Resp: 1310387
 Ion Ratio Lower Upper
 244 100
 212 7.8 6.2 9.2
 122 10.9 9.0 13.6

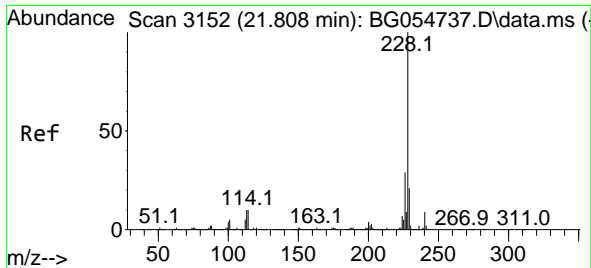


#80
 Butylbenzylphthalate
 Concen: 43.906 ng
 RT: 20.815 min Scan# 2983
 Delta R.T. -0.000 min
 Lab File: BG054744.D
 Acq: 25 Aug 2022 20:31



Tgt Ion:149 Resp: 365945
 Ion Ratio Lower Upper
 149 100
 91 72.1 59.5 89.3
 206 21.6 16.6 25.0



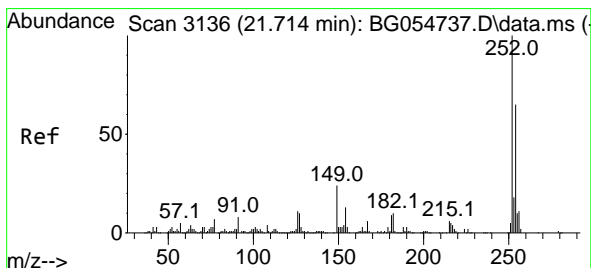
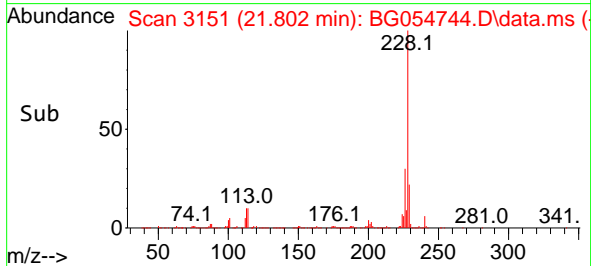
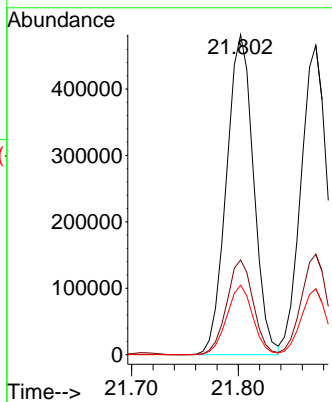
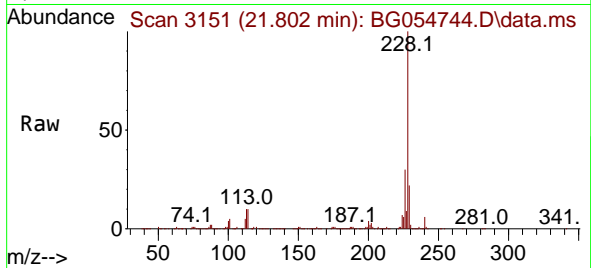


#81
 Benzo(a)anthracene
 Concen: 43.934 ng
 RT: 21.802 min Scan# 3151
 Delta R.T. -0.006 min
 Lab File: BG054744.D
 Acq: 25 Aug 2022 20:31

Instrument :
 BNA_G
 ClientSampleId :
 PB147245BS

Tgt Ion:228 Resp: 853625

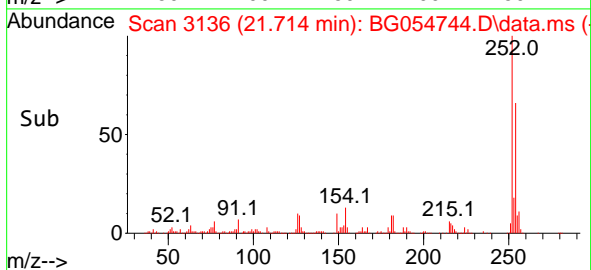
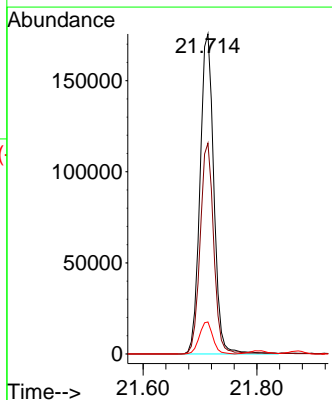
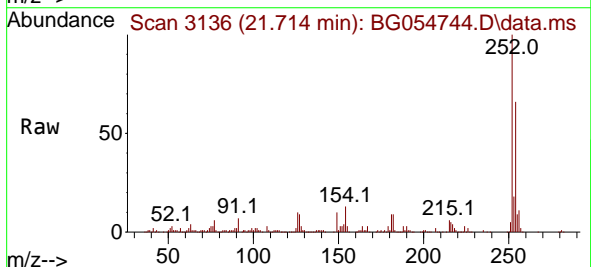
Ion	Ratio	Lower	Upper
228	100		
226	29.6	23.4	35.2
229	21.7	16.5	24.7

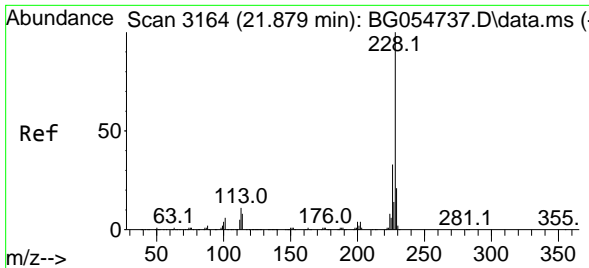


#82
 3,3'-Dichlorobenzidine
 Concen: 43.401 ng
 RT: 21.714 min Scan# 3136
 Delta R.T. -0.000 min
 Lab File: BG054744.D
 Acq: 25 Aug 2022 20:31

Tgt Ion:252 Resp: 295653

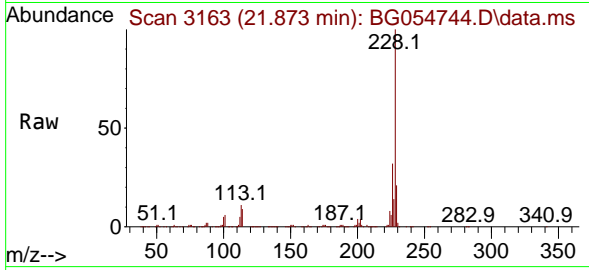
Ion	Ratio	Lower	Upper
252	100		
254	65.9	51.4	77.2
126	10.0	8.2	12.2





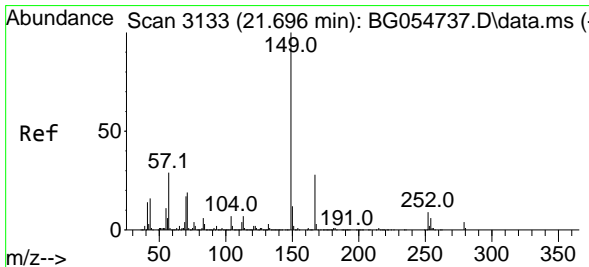
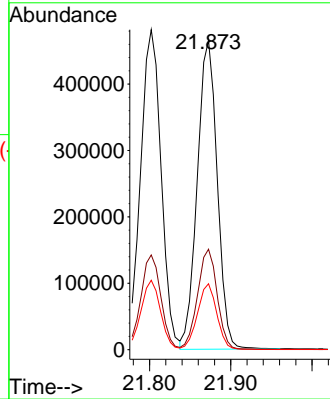
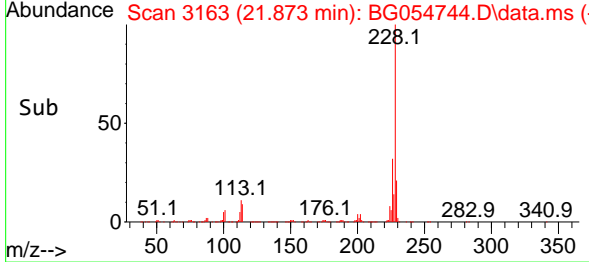
#83
 Chrysene
 Concen: 42.839 ng
 RT: 21.873 min Scan# 3164
 Delta R.T. -0.006 min
 Lab File: BG054744.D
 Acq: 25 Aug 2022 20:31

Instrument : BNA_G
 ClientSampleId : PB147245BS

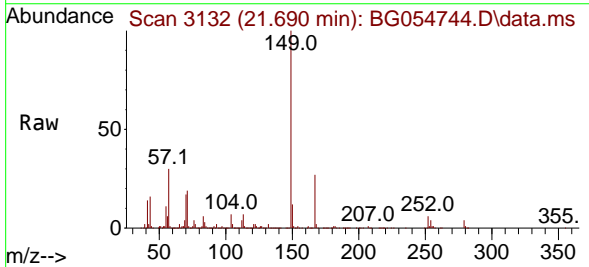


Tgt Ion:228 Resp: 795843

Ion	Ratio	Lower	Upper
228	100		
226	32.5	25.5	38.3
229	21.3	16.8	25.2

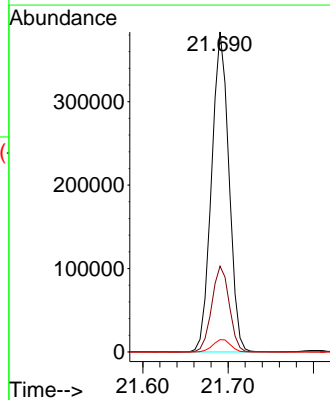
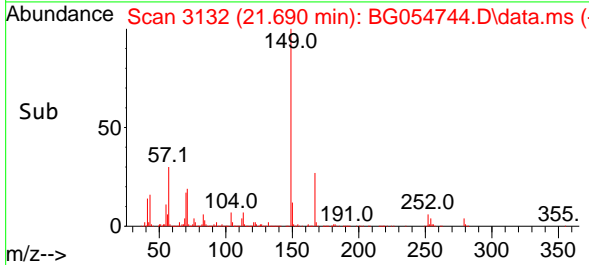


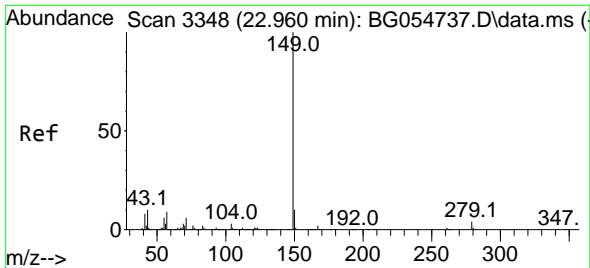
#84
 Bis(2-ethylhexyl)phthalate
 Concen: 45.215 ng
 RT: 21.690 min Scan# 3132
 Delta R.T. -0.006 min
 Lab File: BG054744.D
 Acq: 25 Aug 2022 20:31



Tgt Ion:149 Resp: 542952

Ion	Ratio	Lower	Upper
149	100		
167	26.8	21.4	32.0
279	3.8	3.1	4.7



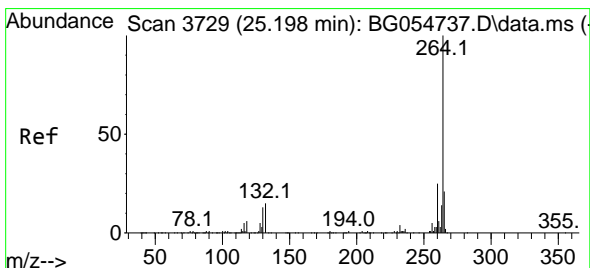
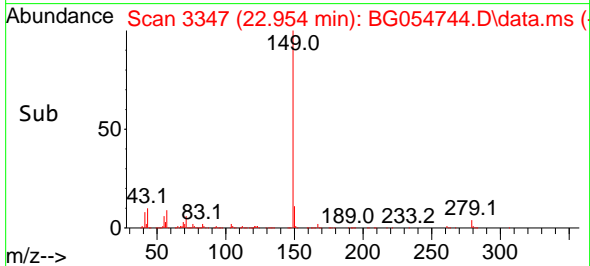
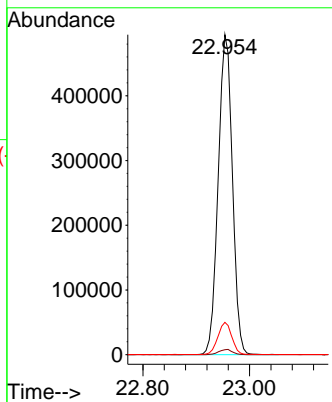
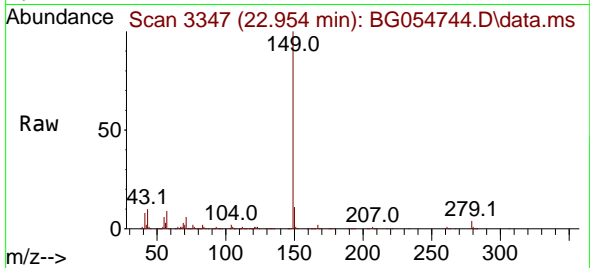


#85
 Di-n-octyl phthalate
 Concen: 44.837 ng
 RT: 22.954 min Scan# 31
 Delta R.T. -0.006 min
 Lab File: BG054744.D
 Acq: 25 Aug 2022 20:31

Instrument :
 BNA_G
 ClientSampleId :
 PB147245BS

Tgt Ion:149 Resp: 913069

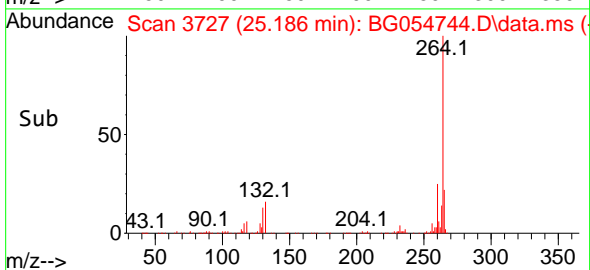
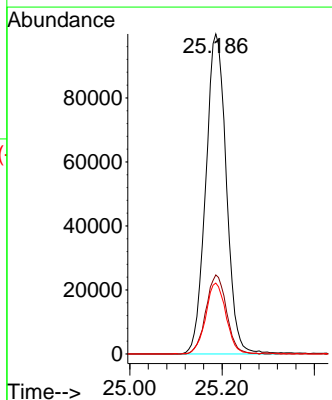
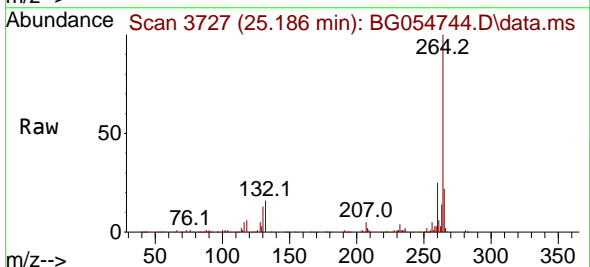
Ion	Ratio	Lower	Upper
149	100		
167	1.6	1.2	1.8
43	9.9	9.0	13.6

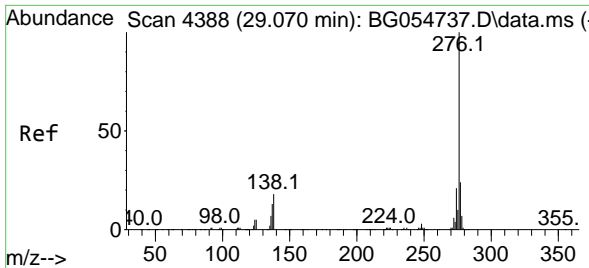


#86
 Perylene-d12
 Concen: 20.000 ng
 RT: 25.186 min Scan# 3727
 Delta R.T. -0.012 min
 Lab File: BG054744.D
 Acq: 25 Aug 2022 20:31

Tgt Ion:264 Resp: 309701

Ion	Ratio	Lower	Upper
264	100		
260	24.7	19.9	29.9
265	22.2	16.9	25.3



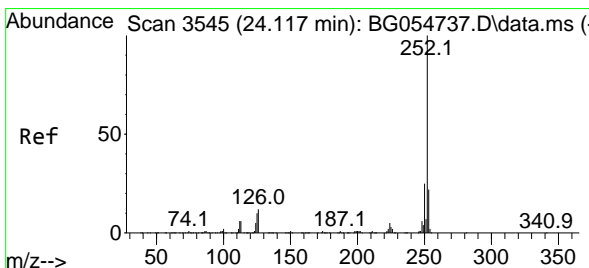
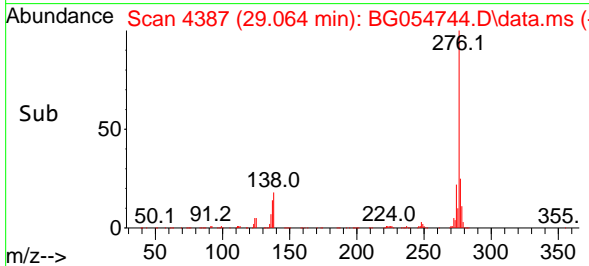
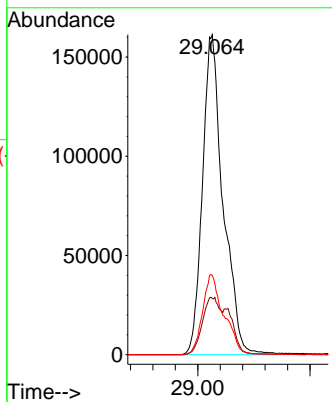
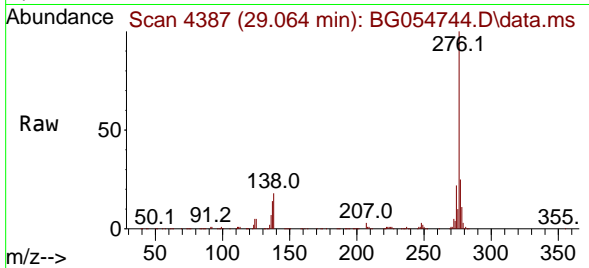


#87
 Indeno(1,2,3-cd)pyrene
 Concen: 43.779 ng
 RT: 29.064 min Scan# 41
 Delta R.T. -0.006 min
 Lab File: BG054744.D
 Acq: 25 Aug 2022 20:31

Instrument :
 BNA_G
 ClientSampleId :
 PB147245BS

Tgt Ion: 276 Resp: 1029316

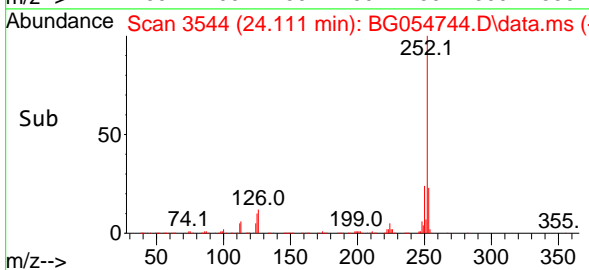
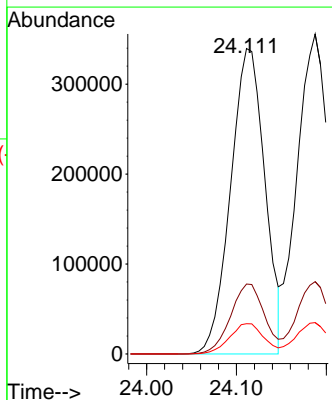
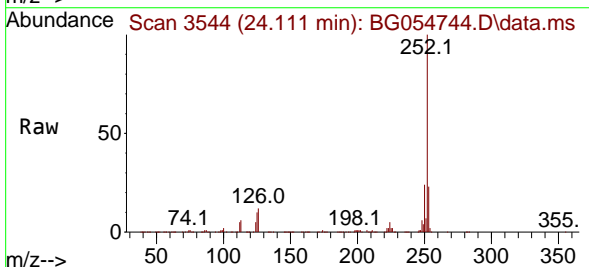
Ion	Ratio	Lower	Upper
276	100		
138	15.7	12.0	18.0
277	25.7	20.2	30.4

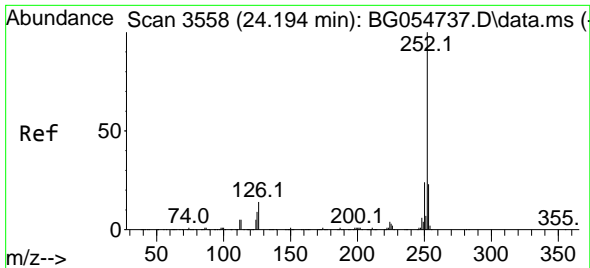


#88
 Benzo(b)fluoranthene
 Concen: 46.355 ng
 RT: 24.111 min Scan# 3544
 Delta R.T. -0.006 min
 Lab File: BG054744.D
 Acq: 25 Aug 2022 20:31

Tgt Ion: 252 Resp: 900586

Ion	Ratio	Lower	Upper
252	100		
253	22.9	18.0	27.0
125	9.9	8.1	12.1

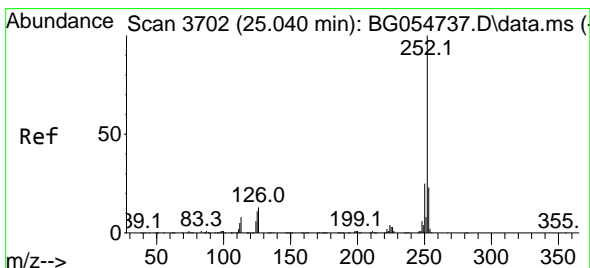
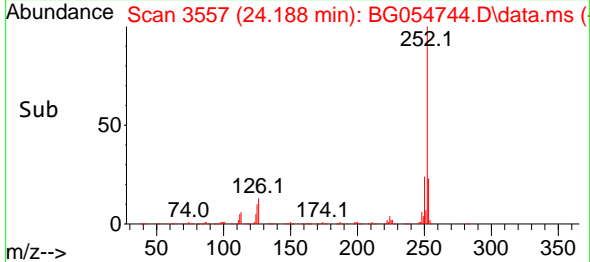
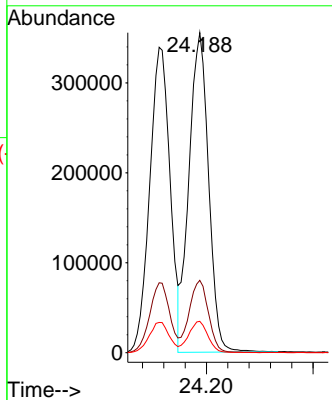
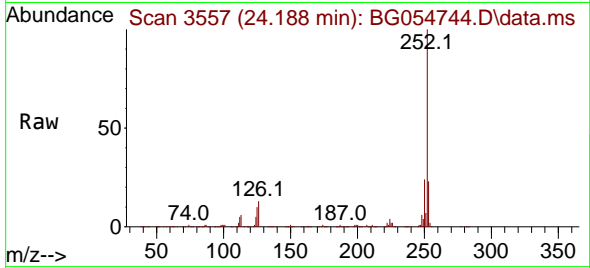




#89
 Benzo(k)fluoranthene
 Concen: 46.232 ng
 RT: 24.188 min Scan# 31
 Delta R.T. -0.006 min
 Lab File: BG054744.D
 Acq: 25 Aug 2022 20:31

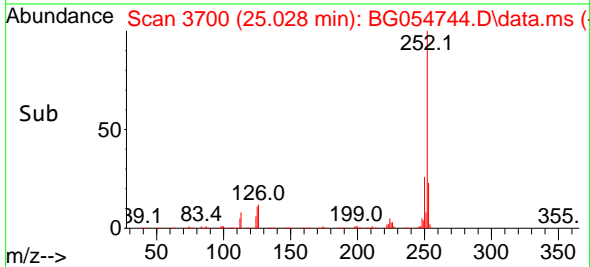
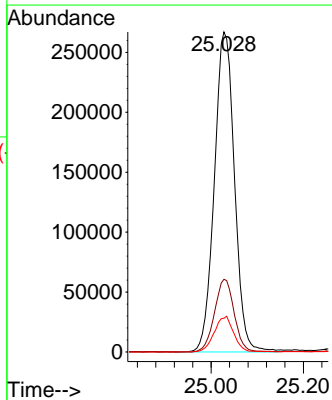
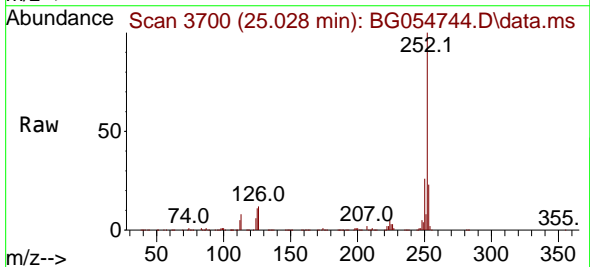
Instrument :
 BNA_G
 ClientSampleId :
 PB147245BS

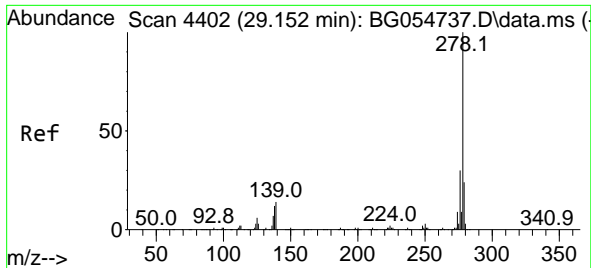
Tgt Ion:252 Resp: 903933
 Ion Ratio Lower Upper
 252 100
 253 22.6 17.8 26.8
 125 9.8 8.2 12.4



#90
 Benzo(a)pyrene
 Concen: 48.761 ng
 RT: 25.028 min Scan# 3700
 Delta R.T. -0.012 min
 Lab File: BG054744.D
 Acq: 25 Aug 2022 20:31

Tgt Ion:252 Resp: 809354
 Ion Ratio Lower Upper
 252 100
 253 22.7 18.3 27.5
 125 10.5 8.8 13.2





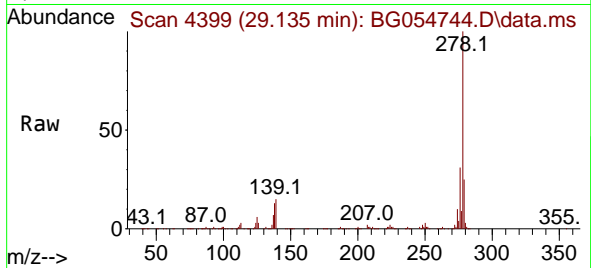
#91
 Dibenzo(a,h)anthracene
 Concen: 46.021 ng
 RT: 29.135 min Scan# 41
 Delta R.T. -0.018 min
 Lab File: BG054744.D
 Acq: 25 Aug 2022 20:31

Instrument :

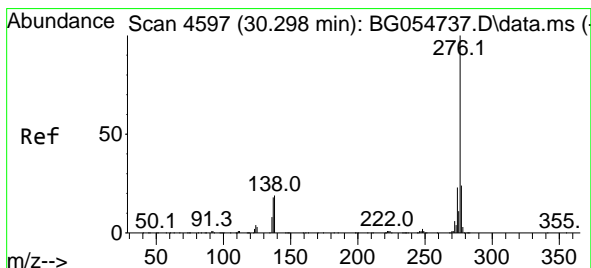
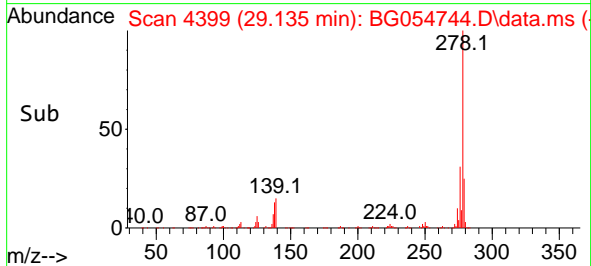
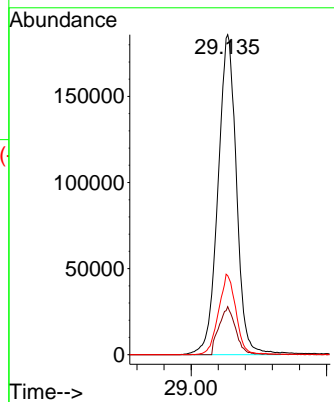
BNA_G

ClientSampleId :

PB147245BS



Tgt Ion:278 Resp: 881518
 Ion Ratio Lower Upper
 278 100
 139 15.0 11.4 17.2
 279 24.7 19.3 28.9



#92
 Benzo(g,h,i)perylene
 Concen: 45.739 ng
 RT: 30.280 min Scan# 4594
 Delta R.T. -0.018 min
 Lab File: BG054744.D
 Acq: 25 Aug 2022 20:31

Tgt Ion:276 Resp: 885076
 Ion Ratio Lower Upper
 276 100
 277 24.6 19.4 29.0
 138 20.0 16.6 25.0

