

Data Path : Z:\SVOASRV\HPCHEM1\BNA G\DATA\BG082719\
 Data File : BG042515.D
 Acq On : 27 Aug 2019 22:04
 Operator : HP/JU
 Sample : K4551-08
 Misc :
 ALS Vial : 11 Sample Multiplier: 1

Instrument :
 BNA_G
 ClientSampleId :

Quant Time: Aug 28 01:29:21 2019
 Quant Method : Z:\SVOASRV\HPCHEM1\BNA G\METHODS\8270-BG082219.M
 Quant Title : ASP BNA STANDARDS FOR 5 POINT CALIBRATION
 QLast Update : Thu Aug 22 14:29:15 2019
 Response via : Initial Calibration

Internal Standards	R.T.	QIon	Response	Conc	Units	Dev(Min)
1) 1,4-Dichlorobenzene-d4	8.00	152	32013	20.00	ng	0.00
21) Naphthalene-d8	10.82	136	122544	20.00	ng	0.00
39) Acenaphthene-d10	14.66	164	92878	20.00	ng	0.00
64) Phenanthrene-d10	17.41	188	233173	20.00	ng	0.00
76) Chrysene-d12	21.68	240	295308	20.00	ng	-0.02
87) Perylene-d12	24.92	264	349825	20.00	ng	-0.02

System Monitoring Compounds

5) 2-Fluorophenol	5.55	112	127389	80.59	ng	0.00
7) Phenol-d6	7.16	99	171400	80.28	ng	0.00
23) Nitrobenzene-d5	9.17	82	95770	54.01	ng	0.00
42) 2,4,6-Tribromophenol	16.15	330	107202	81.21	ng	0.00
45) 2-Fluorobiphenyl	13.28	172	283162	51.56	ng	0.00
79) Terphenyl-d14	20.02	244	594766	43.54	ng	0.00

Target Compounds

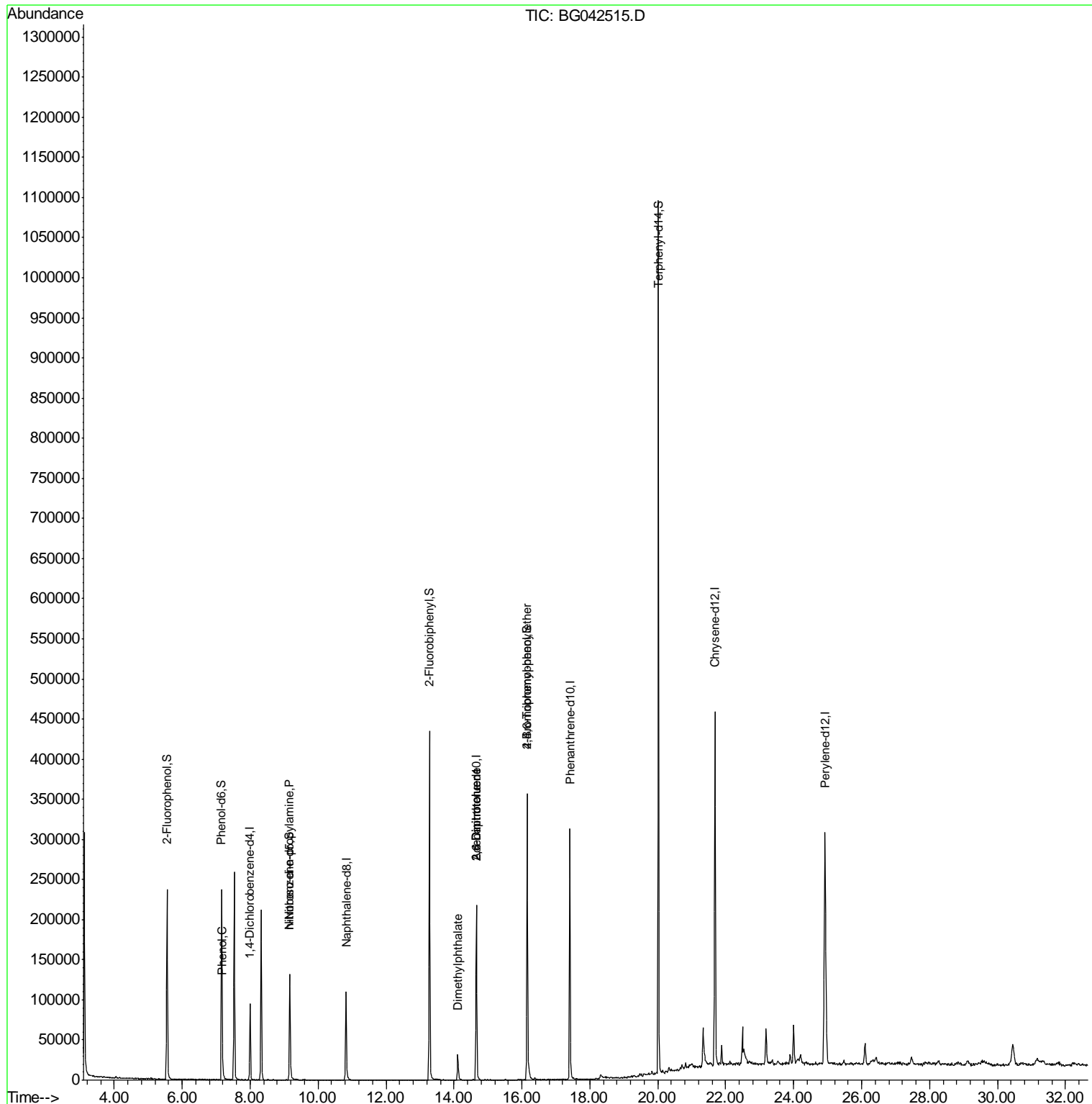
						Qvalue
10) Phenol	7.19	94	4999	2.303	ng	# 61
19) n-Nitroso-di-n-propylamine	9.17	70	12428	8.985	ng	# 71
50) Dimethylphthalate	14.11	163	41458	6.186	ng	98
51) 2,6-Dinitrotoluene	14.65	165	11700	7.532	ng	# 36
57) 2,4-Dinitrotoluene	14.65	165	11700	5.260	ng	# 38
67) 4-Bromophenyl-phenylether	16.15	248	6900	2.333	ng	# 1

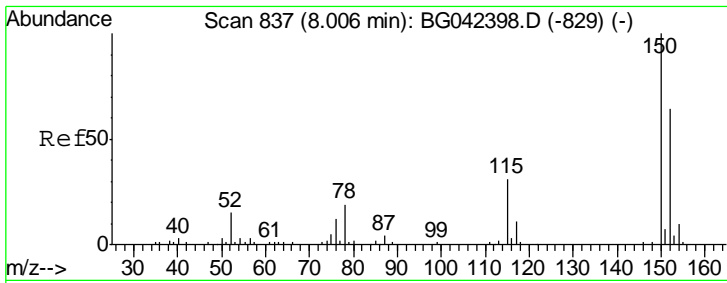
(#) = qualifier out of range (m) = manual integration (+) = signals summed

Data Path : Z:\SVOASRV\HPCHEM1\BNA G\DATA\BG082719\
 Data File : BG042515.D
 Acq On : 27 Aug 2019 22:04
 Operator : HP/JU
 Sample : K4551-08
 Misc :
 ALS Vial : 11 Sample Multiplier: 1

Instrument :
 BNA_G
 ClientSampleId :

Quant Time: Aug 28 01:29:21 2019
 Quant Method : Z:\SVOASRV\HPCHEM1\BNA G\METHODS\8270-BG082219.M
 Quant Title : ASP BNA STANDARDS FOR 5 POINT CALIBRATION
 QLast Update : Thu Aug 22 14:29:15 2019
 Response via : Initial Calibration

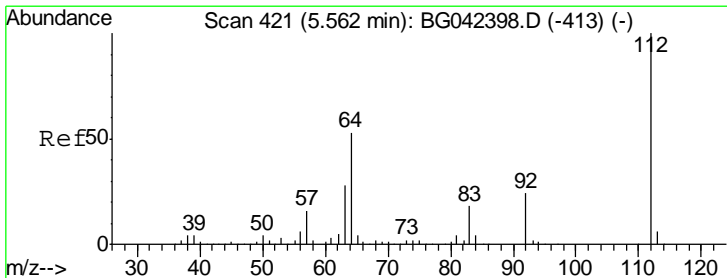
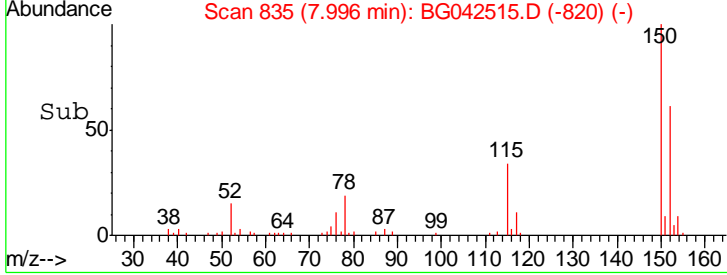
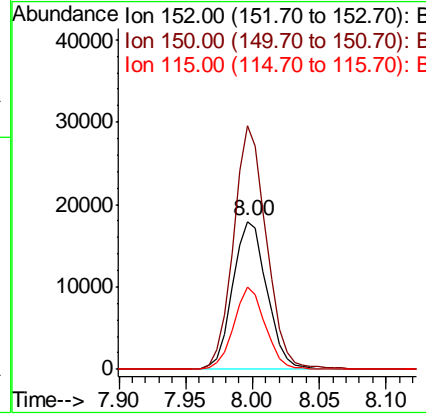
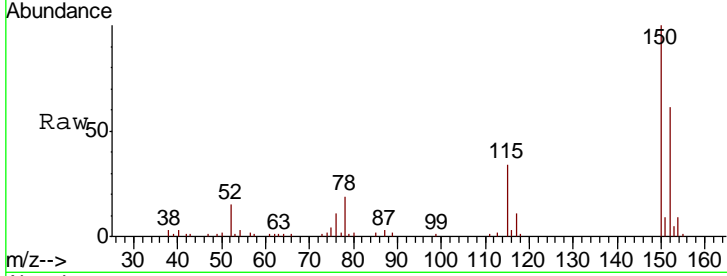




#1
 1,4-Dichlorobenzene-d4
 Concen: 20.000 ng
 RT: 8.00 min Scan# 835
 Delta R.T. -0.01 min
 Lab File: BG042515.D
 Acq: 27 Aug 2019 22:04

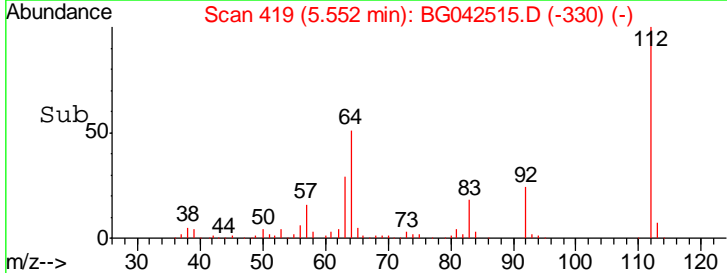
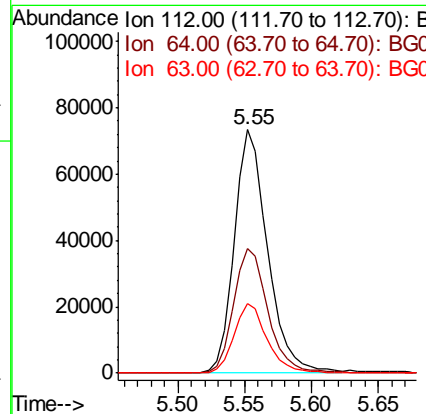
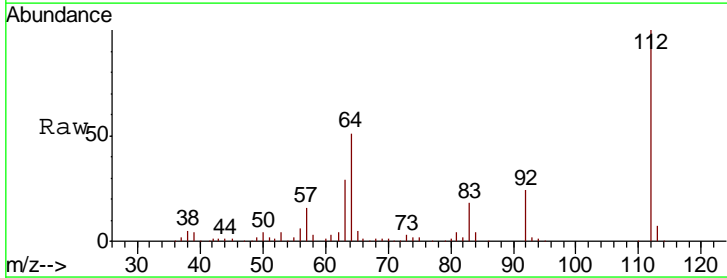
Instrument :
 BNA_G
 ClientSampled :

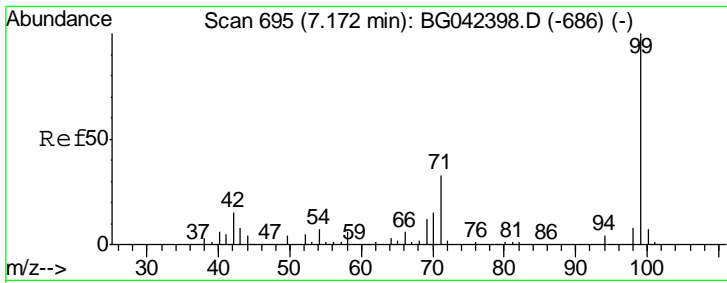
Tgt Ion	Resp	Lower	Upper
152	32013		
150	164.6	125.4	188.0
115	56.1	38.5	57.7



#5
 2-Fluorophenol
 Concen: 80.592 ng
 RT: 5.55 min Scan# 419
 Delta R.T. -0.01 min
 Lab File: BG042515.D
 Acq: 27 Aug 2019 22:04

Tgt Ion	Resp	Lower	Upper
112	127389		
64	51.4	42.8	64.2
63	28.7	22.7	34.1

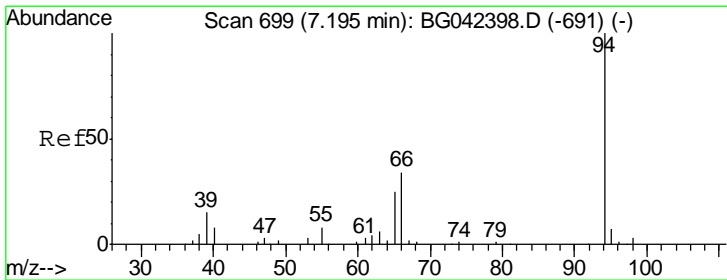
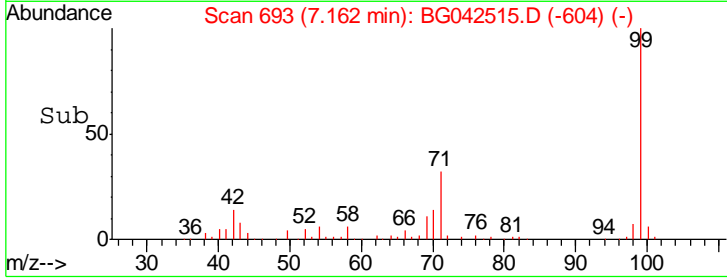
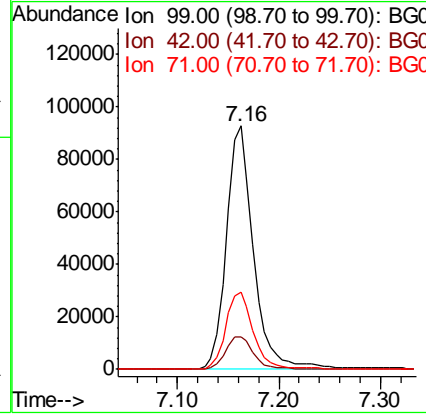
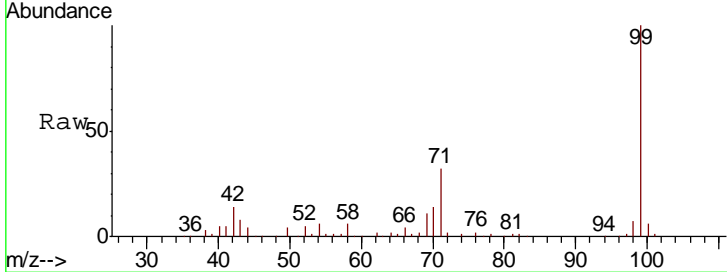




#7
 Phenol-d6
 Concen: 80.277 ng
 RT: 7.16 min Scan# 693
 Delta R.T. -0.01 min
 Lab File: BG042515.D
 Acq: 27 Aug 2019 22:04

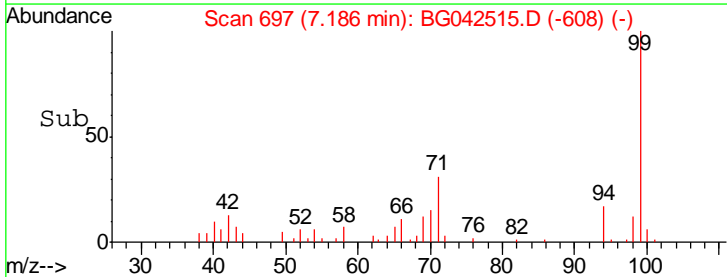
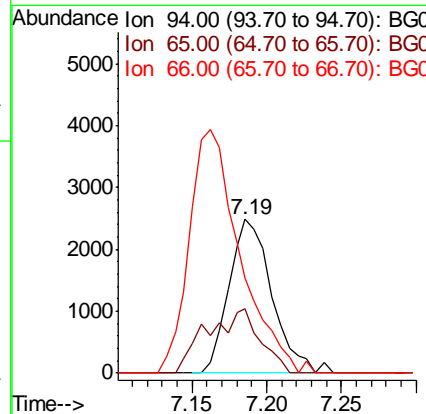
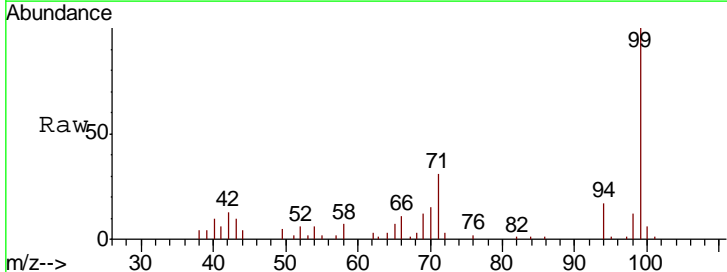
Instrument :
 BNA_G
 ClientSampled :

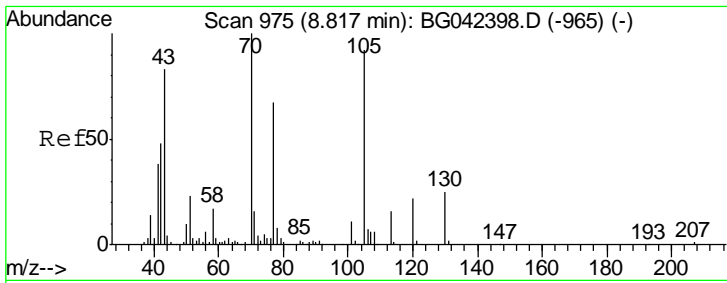
Tgt Ion	Resp	Lower	Upper
99	171400		
42	13.6	12.0	18.0
71	31.9	26.3	39.5



#10
 Phenol
 Concen: 2.303 ng
 RT: 7.19 min Scan# 697
 Delta R.T. -0.01 min
 Lab File: BG042515.D
 Acq: 27 Aug 2019 22:04

Tgt Ion	Resp	Lower	Upper
94	4999		
94	100		
65	41.7	5.6	45.6
66	61.7	16.0	56.0#

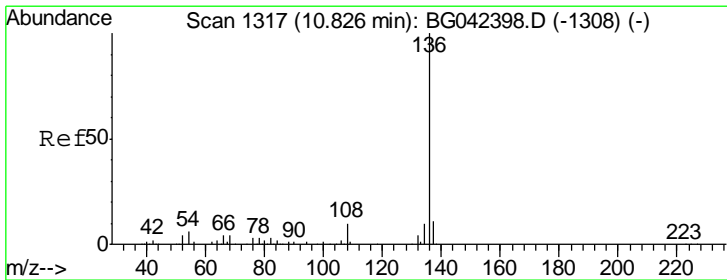
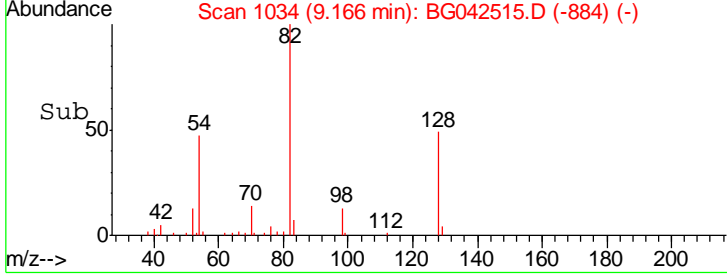
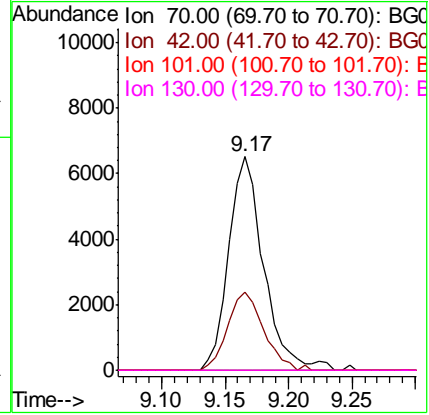
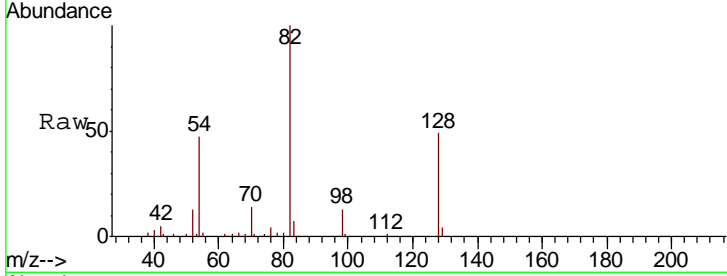




#19
 n-Nitroso-di-n-propylamine
 Concen: 8.985 ng
 RT: 9.17 min Scan# 1034
 Delta R.T. 0.35 min
 Lab File: BG042515.D
 Acq: 27 Aug 2019 22:04

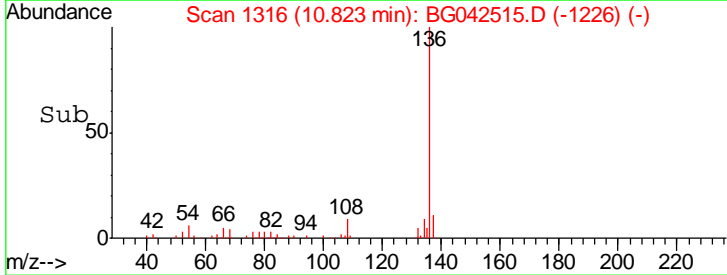
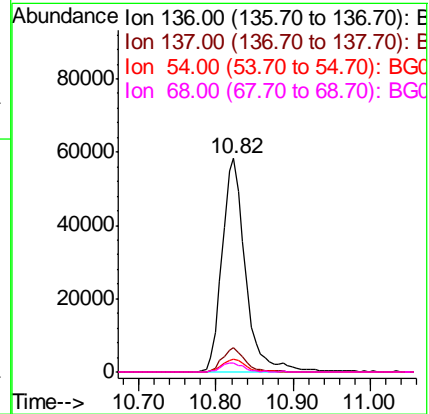
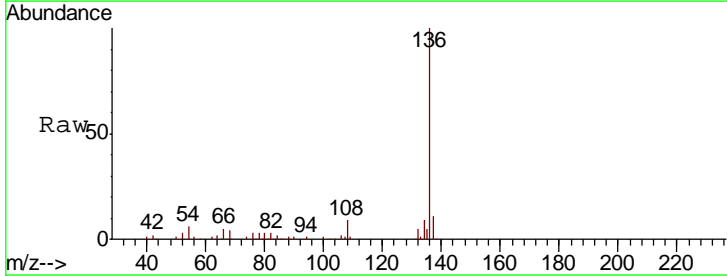
Instrument :
 BNA_G
 ClientSampled :

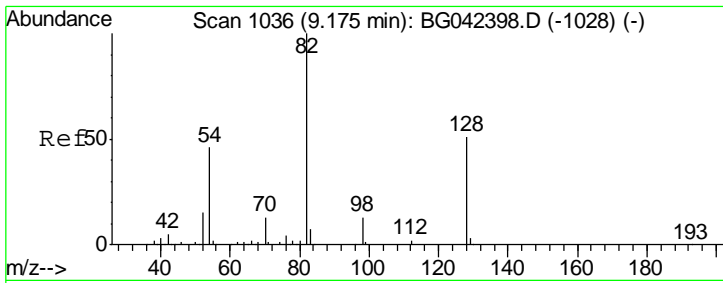
Tgt Ion	Resp	Lower	Upper
70	12428		
70	100		
42	36.5	38.8	58.2#
101	0.0	9.0	13.6#
130	0.0	20.0	30.0#



#21
 Naphthalene-d8
 Concen: 20.000 ng
 RT: 10.82 min Scan# 1316
 Delta R.T. -0.00 min
 Lab File: BG042515.D
 Acq: 27 Aug 2019 22:04

Tgt Ion	Resp	Lower	Upper
136	122544		
136	100		
137	11.1	8.7	13.1
54	5.9	4.9	7.3
68	4.5	3.6	5.4

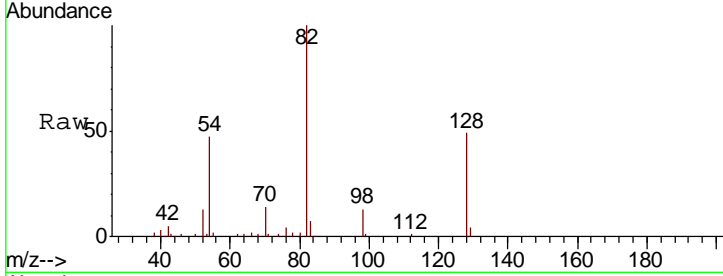




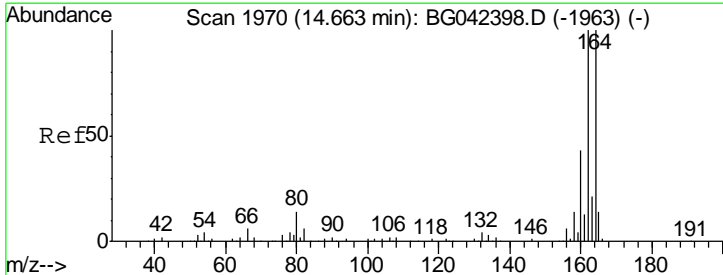
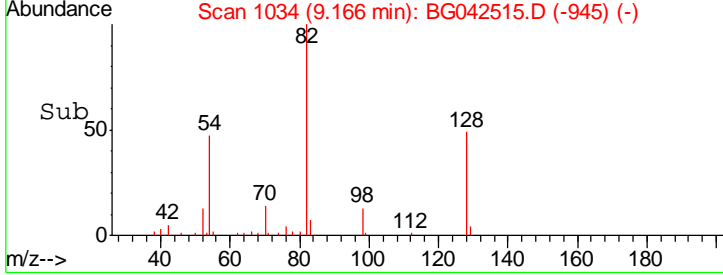
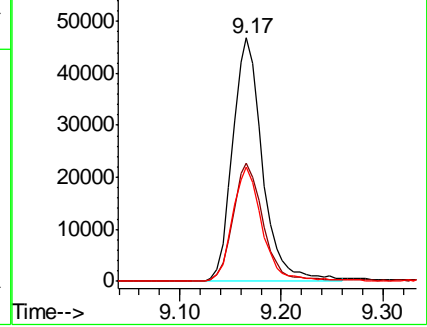
#23
 Nitrobenzene-d5
 Concen: 54.006 ng
 RT: 9.17 min Scan# 1034
 Delta R.T. -0.01 min
 Lab File: BG042515.D
 Acq: 27 Aug 2019 22:04

Instrument :
 BNA_G
 ClientSampled :

Tgt Ion	Resp	Lower	Upper
82	100		
128	48.7	40.7	61.1
54	47.0	36.3	54.5

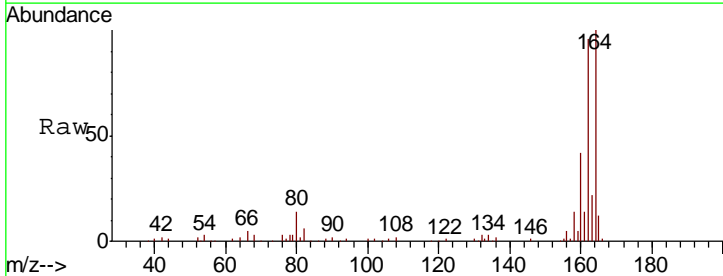


Abundance Ion 82.00 (81.70 to 82.70): BGC
 Ion 128.00 (127.70 to 128.70): BGC
 Ion 54.00 (53.70 to 54.70): BGC

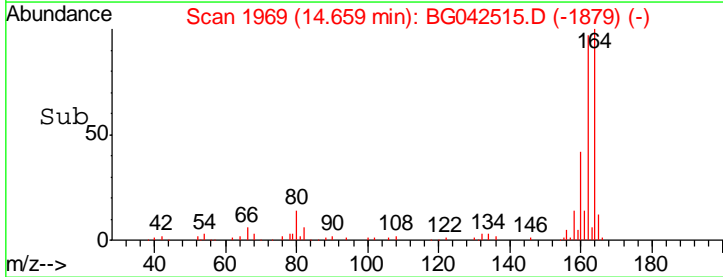
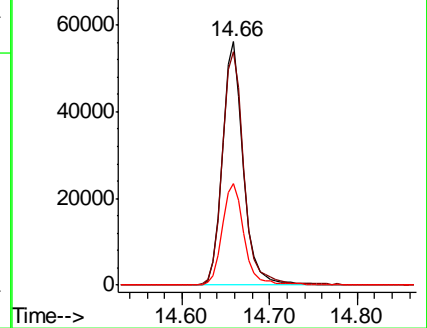


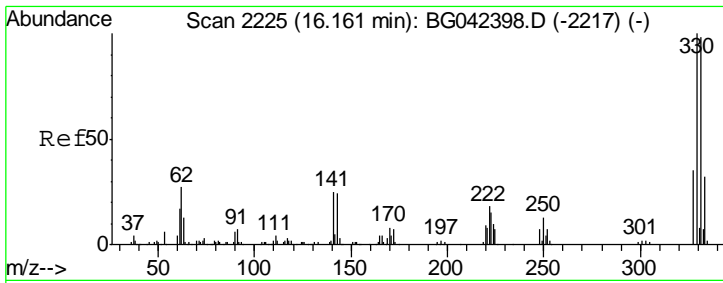
#39
 Acenaphthene-d10
 Concen: 20.000 ng
 RT: 14.66 min Scan# 1969
 Delta R.T. -0.00 min
 Lab File: BG042515.D
 Acq: 27 Aug 2019 22:04

Tgt Ion	Resp	Lower	Upper
164	100		
162	95.9	79.9	119.9
160	41.8	34.3	51.5



Abundance Ion 164.00 (163.70 to 164.70): BGC
 Ion 162.00 (161.70 to 162.70): BGC
 Ion 160.00 (159.70 to 160.70): BGC

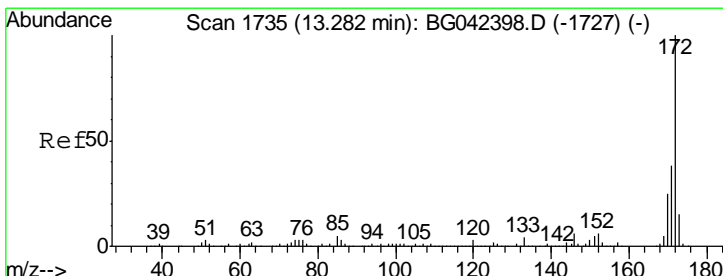
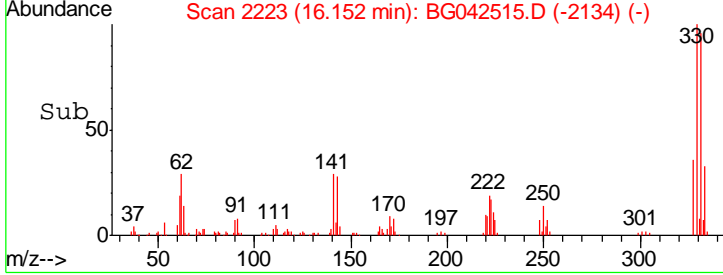
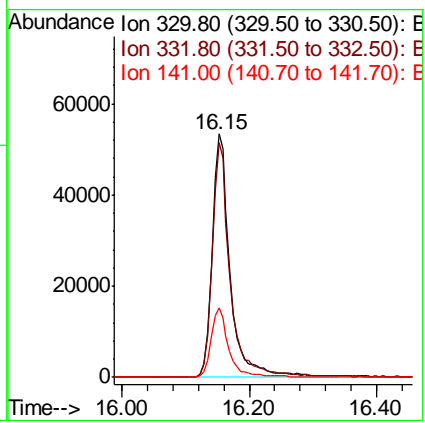
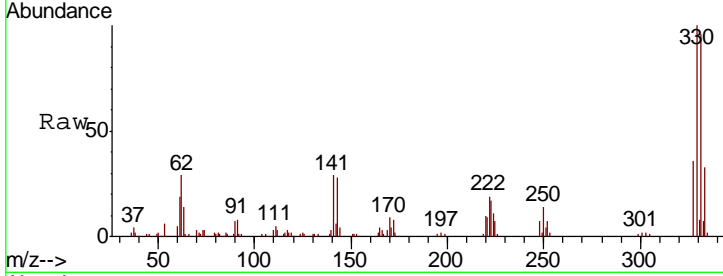




#42
 2,4,6-Tribromophenol
 Concen: 81.207 ng
 RT: 16.15 min Scan# 2223
 Delta R.T. -0.01 min
 Lab File: BG042515.D
 Acq: 27 Aug 2019 22:04

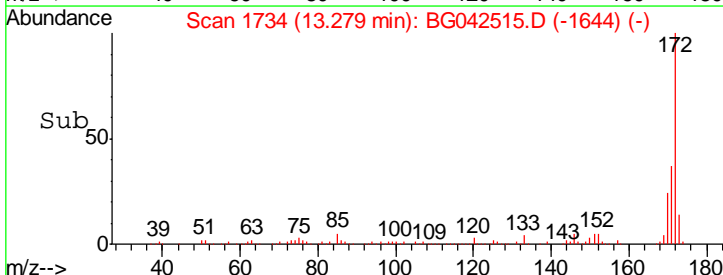
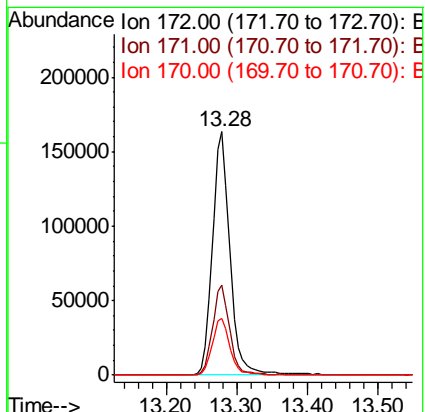
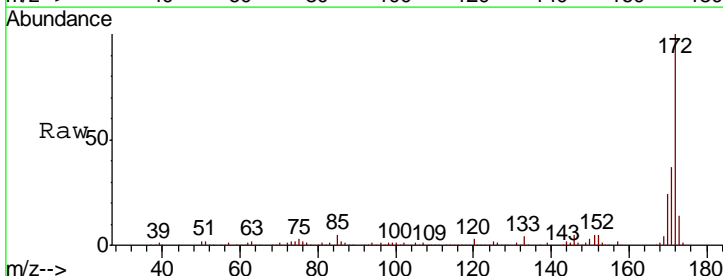
Instrument :
 BNA_G
 ClientSampled :

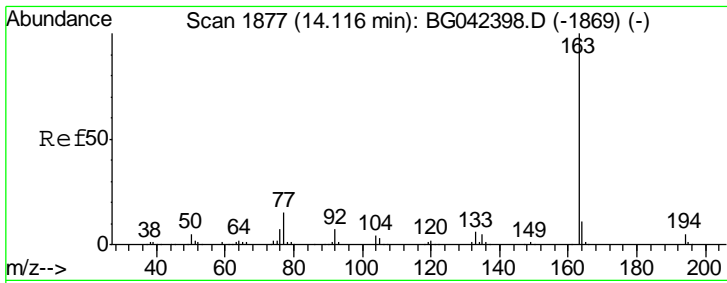
Tgt Ion	Resp	Lower	Upper
330	107202		
332	95.3	77.4	116.0
141	27.1	21.4	32.0



#45
 2-Fluorobiphenyl
 Concen: 51.563 ng
 RT: 13.28 min Scan# 1734
 Delta R.T. -0.00 min
 Lab File: BG042515.D
 Acq: 27 Aug 2019 22:04

Tgt Ion	Resp	Lower	Upper
172	283162		
171	36.9	30.5	45.7
170	23.5	20.2	30.2

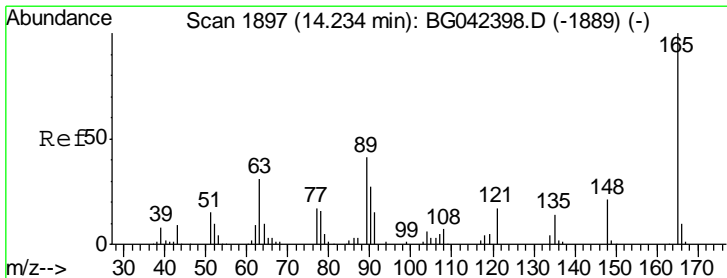
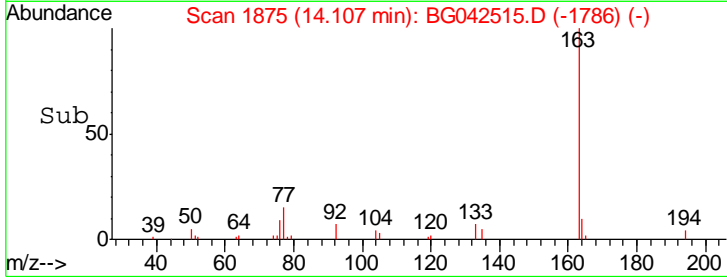
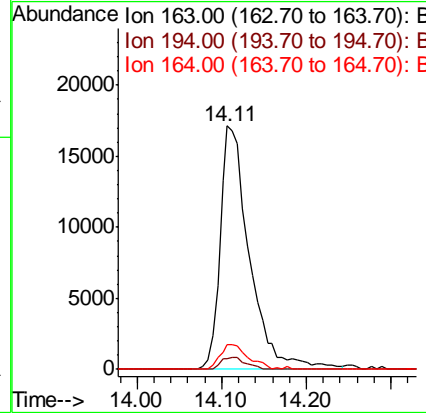
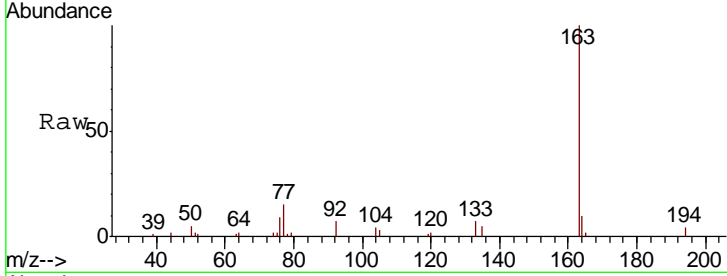




#50
 Dimethylphthalate
 Concen: 6.186 ng
 RT: 14.11 min Scan# 1875
 Delta R.T. -0.01 min
 Lab File: BG042515.D
 Acq: 27 Aug 2019 22:04

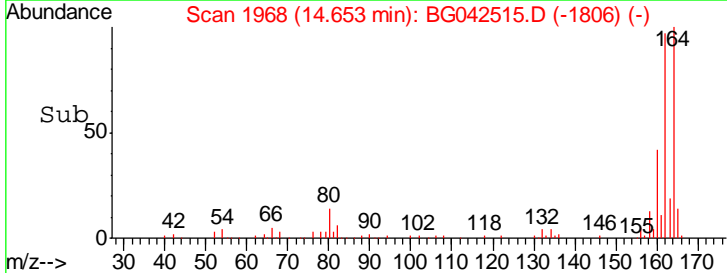
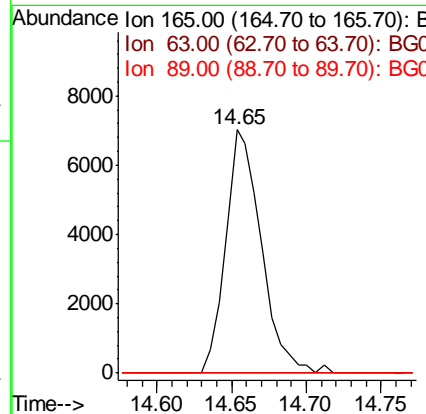
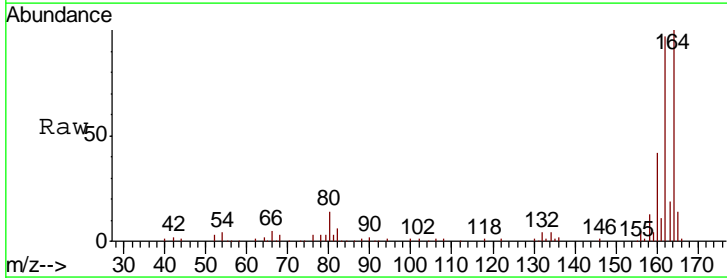
Instrument :
 BNA_G
 ClientSampled :

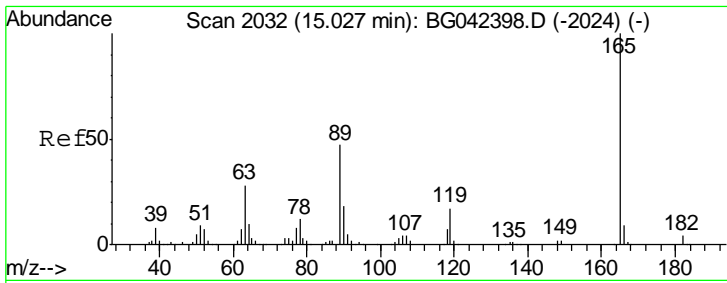
Tgt Ion	Resp	Lower	Upper
163	100		
194	4.2	4.2	6.2
164	10.4	8.8	13.2



#51
 2,6-Dinitrotoluene
 Concen: 7.532 ng
 RT: 14.65 min Scan# 1968
 Delta R.T. 0.42 min
 Lab File: BG042515.D
 Acq: 27 Aug 2019 22:04

Tgt Ion	Resp	Lower	Upper
165	100		
63	0.0	30.6	45.8#
89	0.0	32.6	49.0#

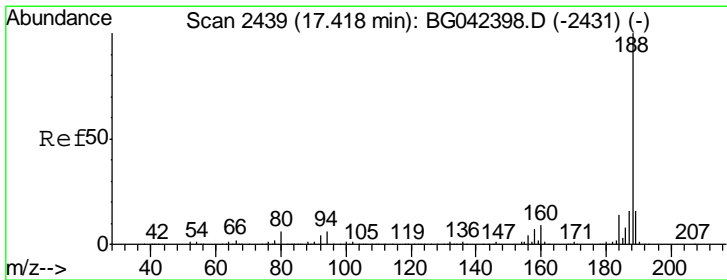
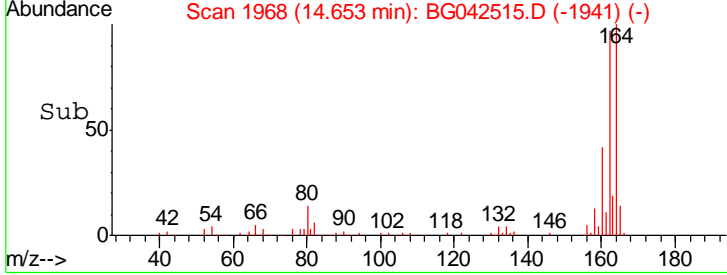
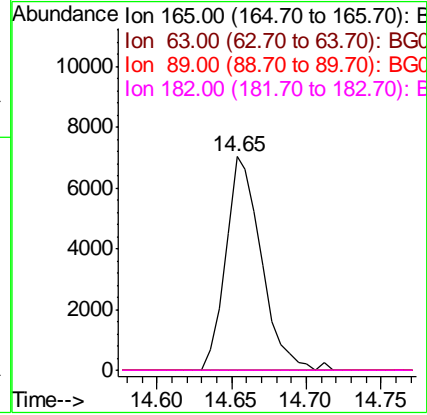
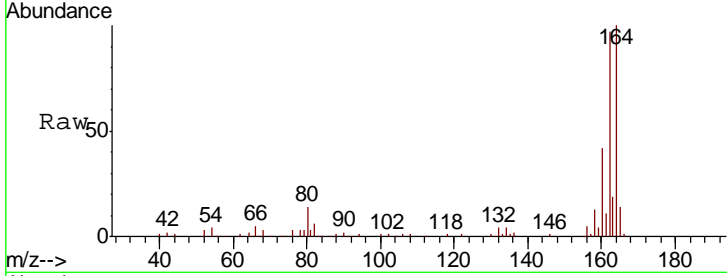




#57
 2,4-Dinitrotoluene
 Concen: 5.260 ng
 RT: 14.65 min Scan# 1968
 Delta R.T. -0.37 min
 Lab File: BG042515.D
 Acq: 27 Aug 2019 22:04

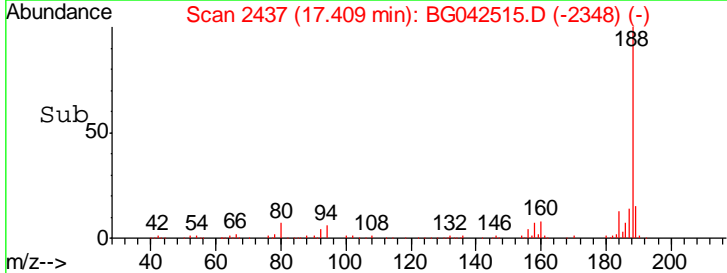
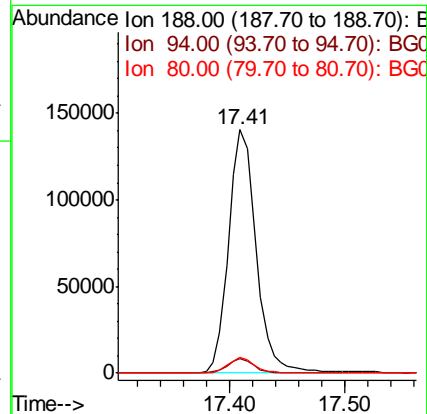
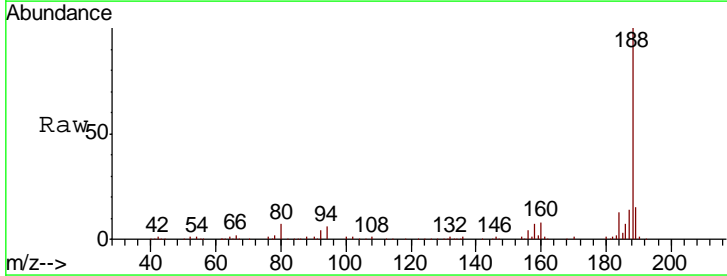
Instrument :
 BNA_G
 ClientSampled :

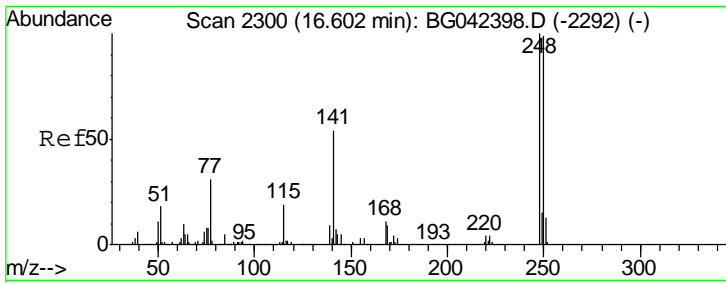
Tgt Ion	Resp	Lower	Upper
165	11700		
63	0.0	22.5	33.7#
89	0.0	37.8	56.6#
182	0.0	3.0	4.4#



#64
 Phenanthrene-d10
 Concen: 20.000 ng
 RT: 17.41 min Scan# 2437
 Delta R.T. -0.01 min
 Lab File: BG042515.D
 Acq: 27 Aug 2019 22:04

Tgt Ion	Resp	Lower	Upper
188	233173		
94	5.7	4.5	6.7
80	6.7	4.9	7.3

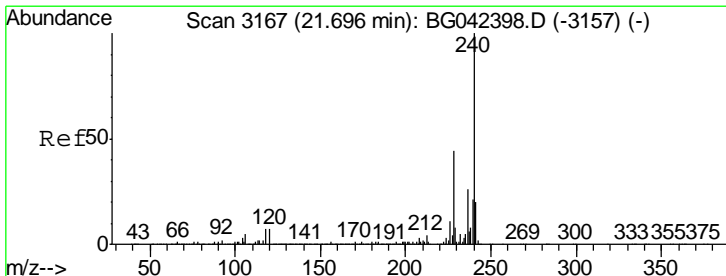
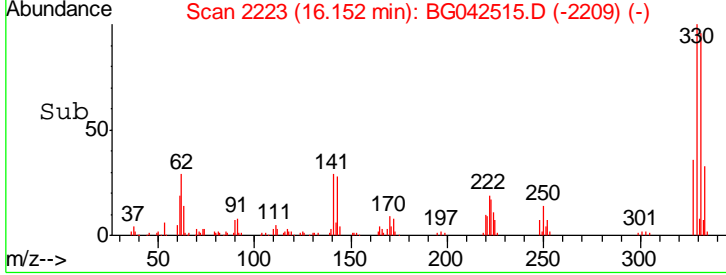
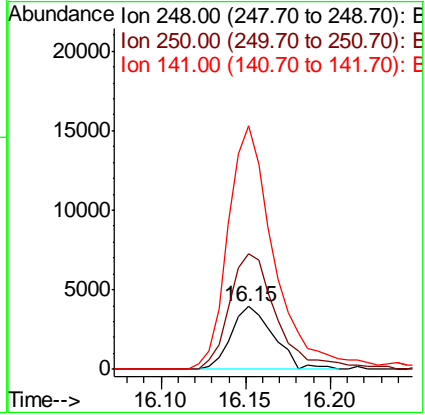
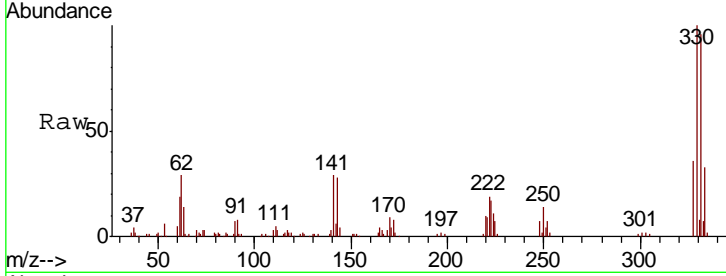




#67
 4-Bromophenyl-phenylether
 Concen: 2.333 ng
 RT: 16.15 min Scan# 2223
 Delta R.T. -0.45 min
 Lab File: BG042515.D
 Acq: 27 Aug 2019 22:04

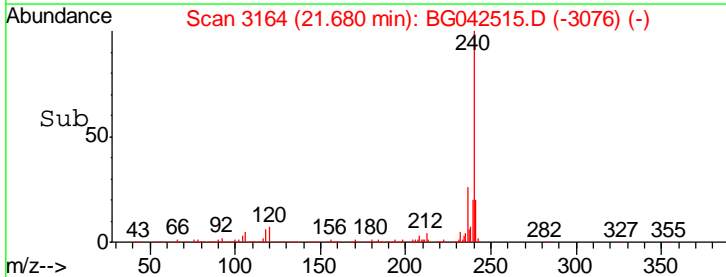
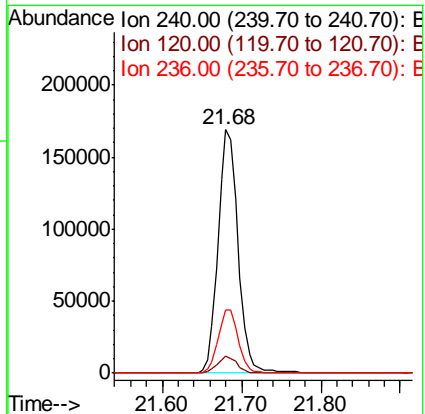
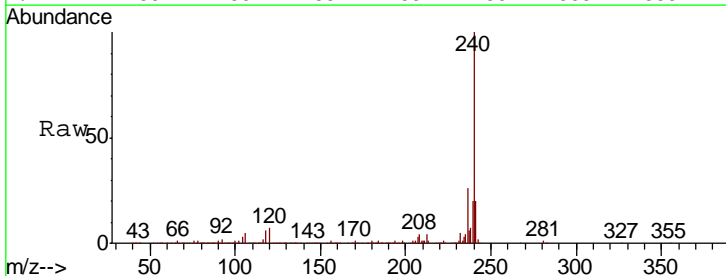
Instrument :
 BNA_G
 ClientSampled :

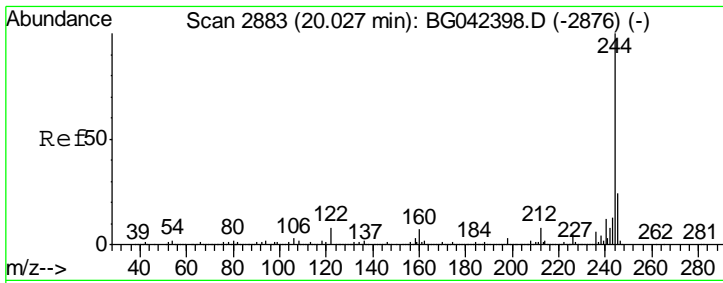
Tgt Ion	Resp	Lower	Upper
248	100		
250	184.7	78.9	118.3#
141	388.1	43.3	64.9#



#76
 Chrysene-d12
 Concen: 20.000 ng
 RT: 21.68 min Scan# 3164
 Delta R.T. -0.02 min
 Lab File: BG042515.D
 Acq: 27 Aug 2019 22:04

Tgt Ion	Resp	Lower	Upper
240	100		
120	6.8	5.7	8.5
236	26.0	21.0	31.4

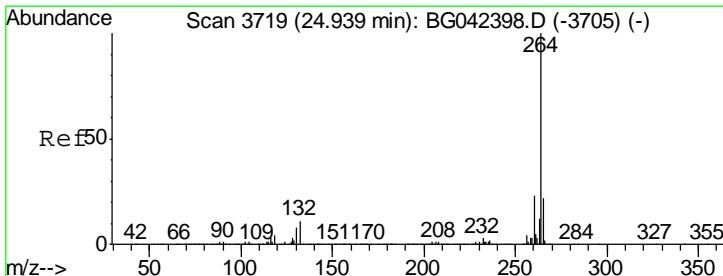
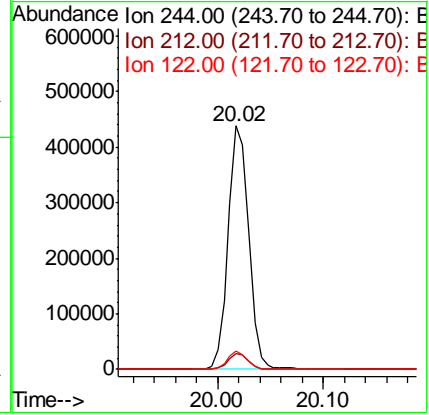
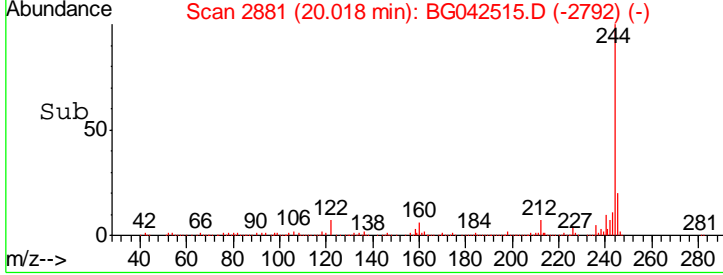
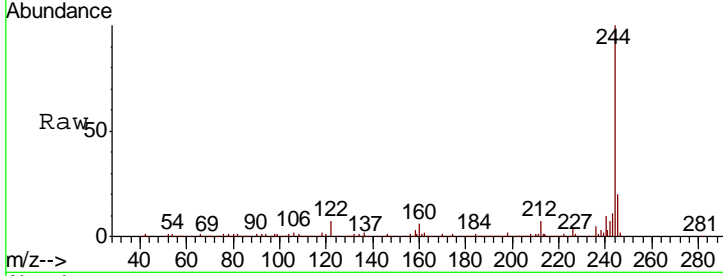




#79
 Terphenyl-d14
 Concen: 43.542 ng
 RT: 20.02 min Scan# 2881
 Delta R.T. -0.01 min
 Lab File: BG042515.D
 Acq: 27 Aug 2019 22:04

Instrument :
 BNA_G
 ClientSampled :

Tgt Ion	Resp	Lower	Upper
244	100		
212	6.7	6.0	9.0
122	7.5	6.7	10.1



#87
 Perylene-d12
 Concen: 20.000 ng
 RT: 24.92 min Scan# 3715
 Delta R.T. -0.02 min
 Lab File: BG042515.D
 Acq: 27 Aug 2019 22:04

Tgt Ion	Resp	Lower	Upper
264	100		
260	21.4	18.5	27.7
265	21.3	17.6	26.4

