

Data Path : Z:\svoasrv\HPCHEM1\BNA_G\Data\BG091023\
 Data File : BG058958.D
 Acq On : 10 Sep 2023 19:32
 Operator : MA/JU
 Sample : SSTD04010
 Misc :
 ALS Vial : 37 Sample Multiplier: 1

Instrument :
 BNA_G
 ClientSampleId :
 SSTD040410

Quant Time: Sep 10 23:06:32 2023
 Quant Method : Z:\svoasrv\HPCHEM1\BNA_G\Methods\SFAM-EPA-BG091023.MA.M
 Quant Title : SVOA CALIBRATION
 QLast Update : Sun Sep 10 22:58:52 2023
 Response via : Initial Calibration

Compound	R.T.	QIon	Response	Conc	Units	Dev(Min)
Internal Standards						
1) 1,4-Dichlorobenzene-d4	8.323	152	61131	20.000	ng/ul	0.00
20) Naphthalene-d8	11.173	136	284254	20.000	ng/ul	0.00
38) Acenaphthene-d10	14.951	164	199831	20.000	ng/ul	0.00
64) Phenanthrene-d10	17.700	188	446997	20.000	ng/ul	# 0.00
79) Chrysene-d12	22.025	240	411741	20.000	ng/ul	0.00
88) Perylene-d12	25.591	264	464543	20.000	ng/ul	# 0.00
System Monitoring Compounds						
3) 1,4-Dioxane-d8	3.640	96	24105	18.913	ng/uL	0.00
4) Pyridine-d5	4.069	84	181749	41.533	ng/ul	0.00
7) Phenol-d5	7.436	99	258505	42.635	ng/ul	0.00
9) Bis-(2-Chloroethyl)eth...	7.647	67	151886	44.281	ng/ul	0.00
11) 2-Chlorophenol-d4	7.841	132	164586	45.508	ng/ul	0.00
15) 4-Methylphenol-d8	9.010	113	199593	42.474	ng/ul	0.00
21) Nitrobenzene-d5	9.522	128	88070	52.600	ng/ul	0.00
24) 2-Nitrophenol-d4	10.244	143	101951	55.585	ng/ul	0.00
28) 2,4-Dichlorophenol-d3	10.767	165	202809	38.113	ng/ul	0.00
31) 4-Chloroaniline-d4	11.314	131	271729	39.808	ng/ul	0.00
46) Dimethylphthalate-d6	14.351	166	628900	40.770	ng/ul	0.00
49) Acenaphthylene-d8	14.657	160	712174	42.712	ng/ul	0.00
54) 4-Nitrophenol-d4	15.121	143	101174	49.643	ng/ul	0.00
60) Fluorene-d10	15.938	176	558742	38.431	ng/ul	0.00
65) 4,6-Dinitro-2-methylph...	16.043	200	91322	44.874	ng/ul	0.00
73) Anthracene-d10	17.800	188	831111	40.874	ng/ul	0.00
81) Pyrene-d10	20.068	212	892513	37.377	ng/ul	0.00
92) Benzo(a)pyrene-d12	25.344	264	964815	42.161	ng/ul	0.00
Target Compounds						
2) 1,4-Dioxane	3.675	88	25698	16.556	ng/uL	90
5) Pyridine	4.093	79	198124	43.009	ng/ul	98
6) Benzaldehyde	7.471	77	159146	44.530	ng/ul#	80
8) Phenol	7.465	94	278856	44.102	ng/ul	98
10) Bis(2-Chloroethyl)ether	7.741	93	197355	42.085	ng/ul	95
12) 2-Chlorophenol	7.876	128	161254	44.220	ng/ul#	94
13) 2-Methylphenol	8.746	108	207004	43.724	ng/ul	96
14) 2,2'-oxybis(1-Chloropr...	8.834	45	169831	31.468	ng/ul	99
16) Acetophenone	9.169	105	333188	39.765	ng/ul	97
17) N-Nitroso-di-n-propyla...	9.140	70	191945	43.799	ng/ul#	96
18) 4-Methylphenol	9.081	108	231828	44.748	ng/ul	86
19) Hexachloroethane	9.410	117	70396	47.298	ng/ul#	80
22) Nitrobenzene	9.569	77	264516	46.192	ng/ul	96
23) Isophorone	10.074	82	557624	39.029	ng/ul	100
25) 2-Nitrophenol	10.274	139	95947	48.497	ng/ul	94
26) 2,4-Dimethylphenol	10.297	107	230477	37.470	ng/ul	89
27) Bis(2-Chloroethoxy)met...	10.562	93	290166	39.218	ng/ul	93
29) 2,4-Dichlorophenol	10.797	162	189635	37.597	ng/ul	99
30) Naphthalene	11.225	128	617957	40.243	ng/ul	98
32) 4-Chloroaniline	11.337	127	257276	39.739	ng/ul	99
33) Hexachlorobutadiene	11.455	225	144148	29.181	ng/ul	93
34) Caprolactam	12.119	113	44689	26.783	ng/ul#	77
35) 4-Chloro-3-methylphenol	12.401	107	228697	38.591	ng/ul	97
36) 2-Methylnaphthalene	12.800	142	453342	38.999	ng/ul	99

Data Path : Z:\svoasrv\HPCHEM1\BNA_G\Data\BG091023\
 Data File : BG058958.D
 Acq On : 10 Sep 2023 19:32
 Operator : MA/JU
 Sample : SSTD04010
 Misc :
 ALS Vial : 37 Sample Multiplier: 1

Instrument :
 BNA_G
 ClientSampleId :
 SSTD040410

Quant Time: Sep 10 23:06:32 2023
 Quant Method : Z:\svoasrv\HPCHEM1\BNA_G\Methods\SFAM-EPA-BG091023.MA.M
 Quant Title : SVOA CALIBRATION
 QLast Update : Sun Sep 10 22:58:52 2023
 Response via : Initial Calibration

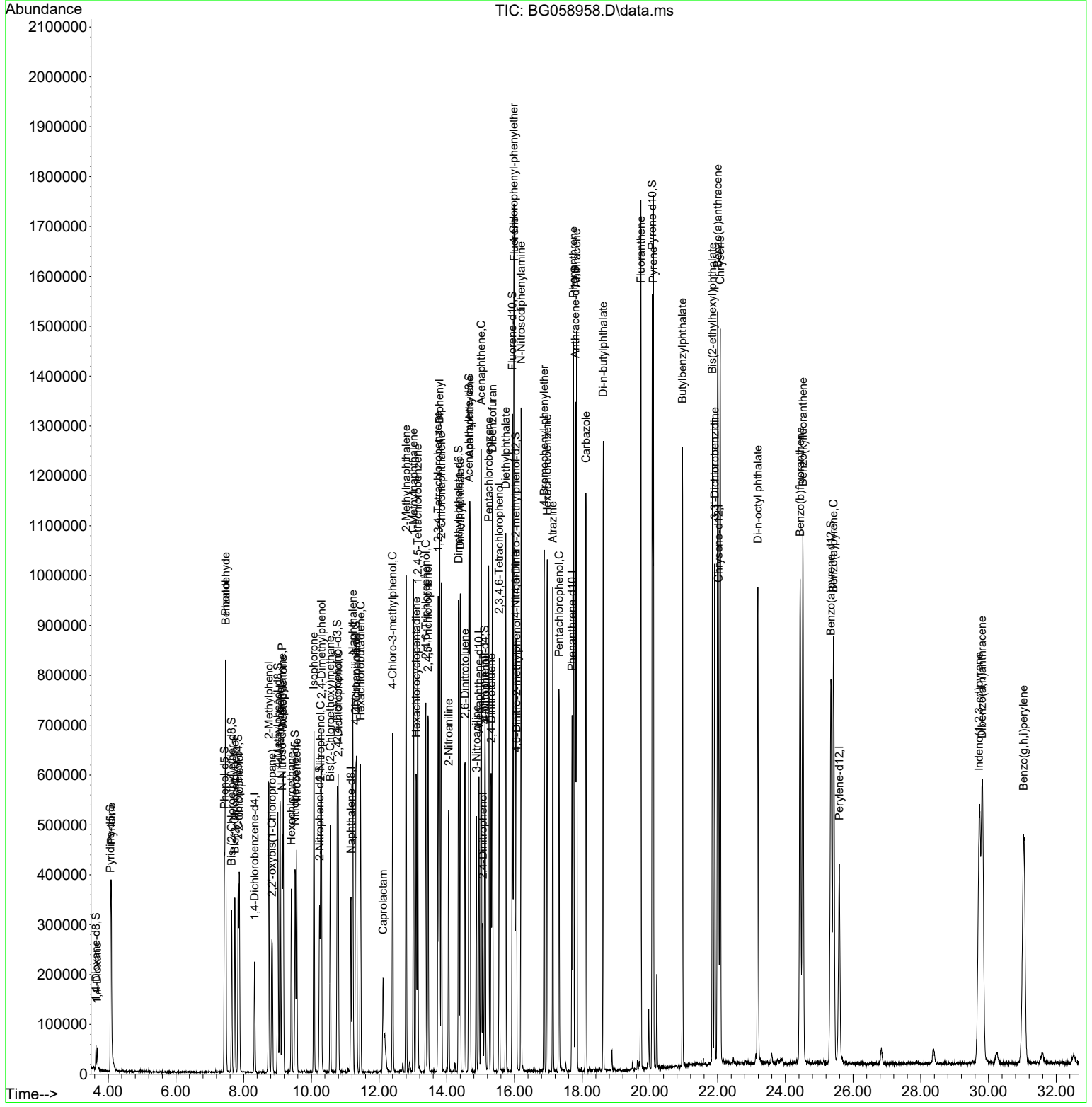
Compound	R.T.	QIon	Response	Conc	Units	Dev(Min)
37) 1-Methylnaphthalene	13.017	142	453737	38.162	ng/ul	97
39) 1,2,4,5-Tetrachloroben...	13.141	216	276223	37.045	ng/ul	97
40) Hexachlorocyclopentadiene	13.100	237	174186	32.459	ng/ul	96
41) 2,4,6-Trichlorophenol	13.382	196	175840	40.582	ng/ul	95
42) 2,4,5-Trichlorophenol	13.446	196	185659	39.965	ng/ul	95
43) 1,1'-Biphenyl	13.787	154	620752	45.654	ng/ul	99
44) 2-Chloronaphthalene	13.840	162	473074	43.625	ng/ul	95
45) 2-Nitroaniline	14.057	65	152301	63.519	ng/ul	91
47) Dimethylphthalate	14.398	163	597542	38.099	ng/ul	99
48) 2,6-Dinitrotoluene	14.539	165	118945	53.433	ng/ul	99
50) Acenaphthylene	14.680	152	770240	41.396	ng/ul	99
51) 3-Nitroaniline	14.874	138	110868	49.425	ng/ul	92
52) Acenaphthene	15.015	153	521414	43.041	ng/ul	98
53) 2,4-Dinitrophenol	15.062	184	61670	32.749	ng/ul	97
55) 4-Nitrophenol	15.139	109	119241	46.779	ng/ul	91
56) Dibenzofuran	15.350	168	736913	40.748	ng/ul	99
57) 2,4-Dinitrotoluene	15.315	165	167660	52.210	ng/ul#	98
58) 2,3,4,6-Tetrachlorophenol	15.550	232	176470	35.953	ng/ul#	98
59) Diethylphthalate	15.744	149	570351	40.462	ng/ul	97
61) Fluorene	15.996	166	605699	39.450	ng/ul	97
62) 4-Chlorophenyl-phenyle...	15.979	204	326609	35.460	ng/ul	97
63) 4-Nitroaniline	16.037	138	101760	48.755	ng/ul	94
66) 4,6-Dinitro-2-methylph...	16.061	198	102606	48.026	ng/ul	99
67) N-Nitrosodiphenylamine	16.196	169	502912	45.749	ng/ul	97
68) 4-Bromophenyl-phenylether	16.878	248	210267	38.738	ng/ul	87
69) Hexachlorobenzene	16.966	284	234921	37.507	ng/ul	97
70) Atrazine	17.130	200	194062	43.971	ng/ul	98
71) Pentachlorophenol	17.318	266	144285	37.508	ng/ul	95
72) Phenanthrene	17.741	178	933171	43.002	ng/ul	98
74) Anthracene	17.835	178	947063	42.746	ng/ul	99
75) 1,2,3,4-Tetrachloroben...	13.746	216	295417	45.513	ng/ul	97
76) Pentachlorobenzene	15.238	250	274401	41.946	ng/ul	97
77) Carbazole	18.111	167	790619	47.014	ng/ul	97
78) Di-n-butylphthalate	18.623	149	857799	56.742	ng/ul	99
80) Fluoranthene	19.733	202	1052245	36.258	ng/ul	98
82) Pyrene	20.097	202	1077760	37.076	ng/ul	97
83) Butylbenzylphthalate	20.961	149	357182	70.866	ng/ul	98
84) 3,3'-Dichlorobenzidine	21.913	252	387343	43.069	ng/ul#	91
85) Benzo(a)anthracene	22.001	228	1120148	39.958	ng/ul	99
86) Bis(2-ethylhexyl)phtha...	21.848	149	536972	68.295	ng/ul#	99
87) Chrysene	22.077	228	1066964	40.631	ng/ul	99
89) Di-n-octyl phthalate	23.188	149	911153	62.806	ng/ul	100
90) Benzo(b)fluoranthene	24.433	252	1158471	41.410	ng/ul	98
91) Benzo(k)fluoranthene	24.516	252	1163690	41.340	ng/ul	94
93) Benzo(a)pyrene	25.421	252	1078376	41.197	ng/ul	99
94) Indeno(1,2,3-cd)pyrene	29.721	276	1171818	35.908	ng/ul	94
95) Dibenzo(a,h)anthracene	29.810	278	548962	20.686	ng/ul	98
96) Benzo(g,h,i)perylene	31.038	276	612377	23.635	ng/ul	99

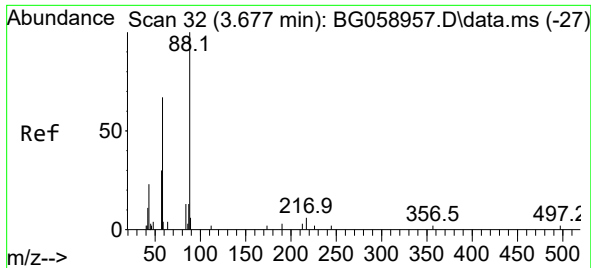
(#) = qualifier out of range (m) = manual integration (+) = signals summed

Data Path : Z:\svoasrv\HPCHEM1\BNA_G\Data\BG091023\
 Data File : BG058958.D
 Acq On : 10 Sep 2023 19:32
 Operator : MA/JU
 Sample : SST04010
 Misc :
 ALS Vial : 37 Sample Multiplier: 1

Instrument :
 BNA_G
 ClientSampleId :
 SST040410

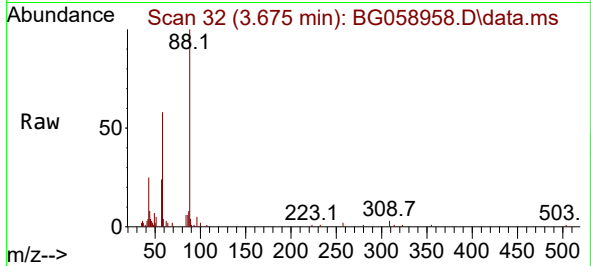
Quant Time: Sep 10 23:06:32 2023
 Quant Method : Z:\svoasrv\HPCHEM1\BNA_G\Methods\SFAM-EPA-BG091023.MA.M
 Quant Title : SVOA CALIBRATION
 QLast Update : Sun Sep 10 22:58:52 2023
 Response via : Initial Calibration



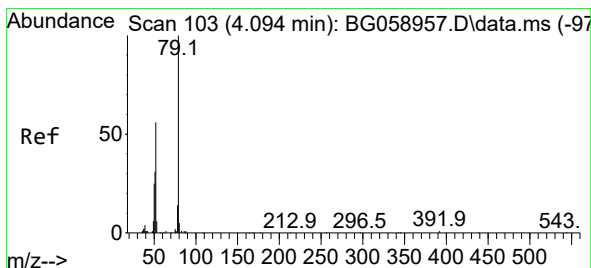
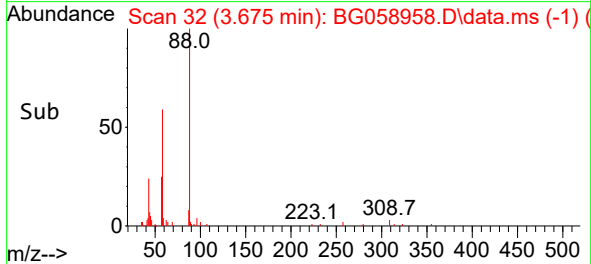
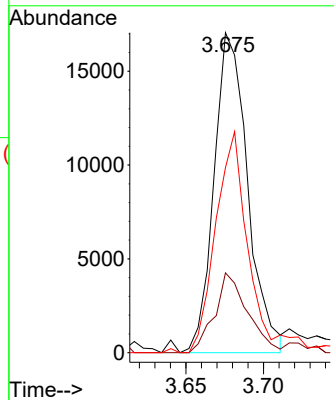


#2
 1,4-Dioxane
 Concen: 16.556 ng/uL
 RT: 3.675 min Scan# 31
 Delta R.T. -0.001 min
 Lab File: BG058958.D
 Acq: 10 Sep 2023 19:32

Instrument :
 BNA_G
 ClientSampleId :
 SSTD040410

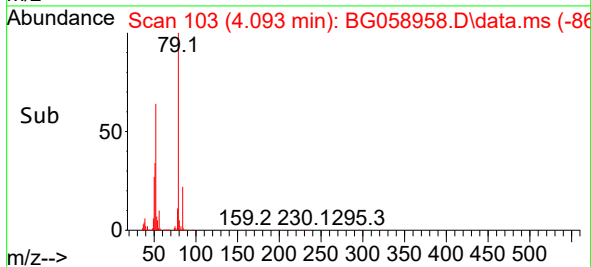
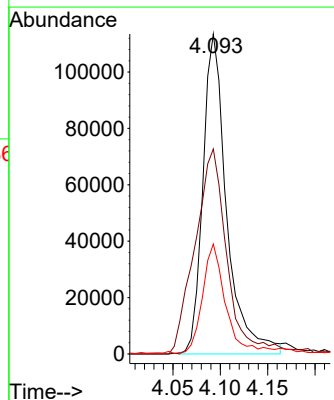
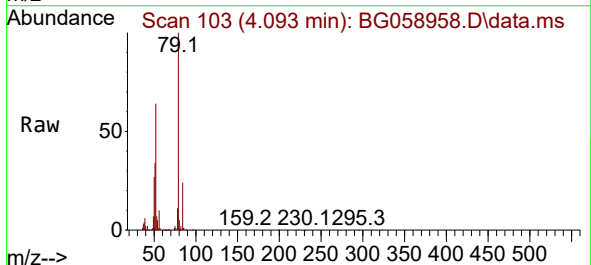


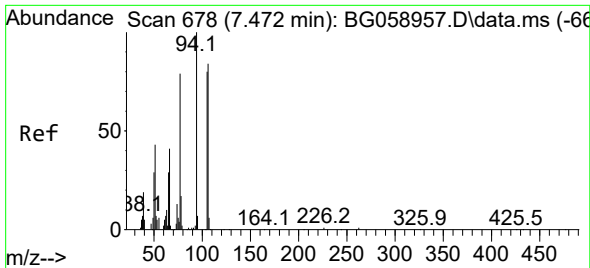
Tgt Ion: 88 Resp: 25698
 Ion Ratio Lower Upper
 88 100
 43 25.0 18.6 28.0
 58 57.8 53.8 80.8



#5
 Pyridine
 Concen: 43.009 ng/uL
 RT: 4.093 min Scan# 103
 Delta R.T. -0.001 min
 Lab File: BG058958.D
 Acq: 10 Sep 2023 19:32

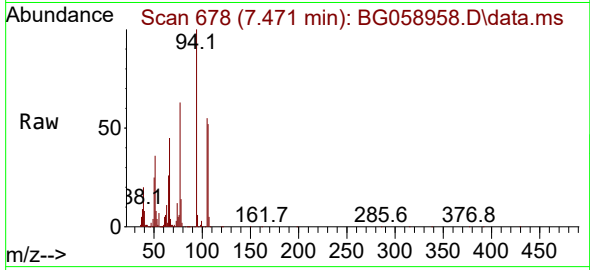
Tgt Ion: 79 Resp: 198124
 Ion Ratio Lower Upper
 79 100
 52 64.0 51.4 77.0
 51 34.4 25.2 37.8



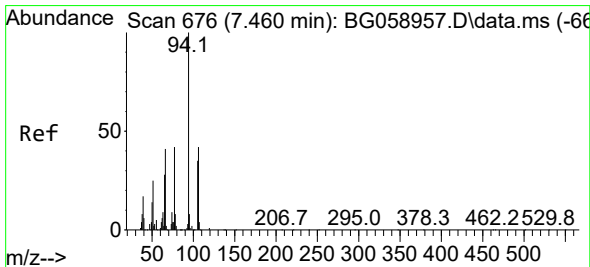
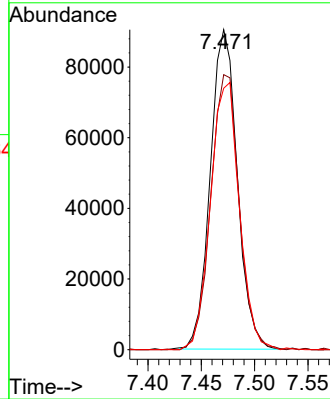
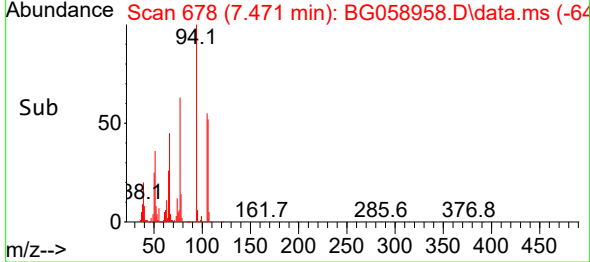


#6
Benzaldehyde
Concen: 44.530 ng/uI
RT: 7.471 min Scan# 61
Delta R.T. -0.001 min
Lab File: BG058958.D
Acq: 10 Sep 2023 19:32

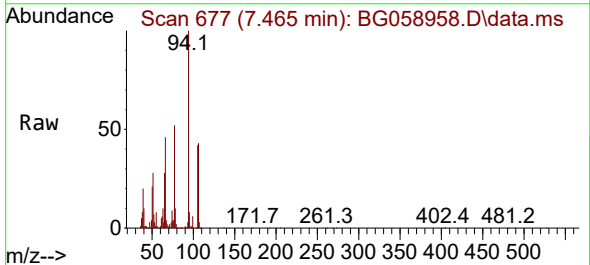
Instrument :
BNA_G
ClientSampleId :
SSTD040410



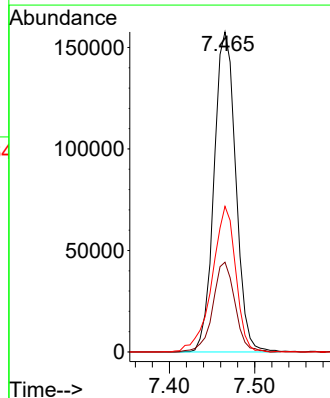
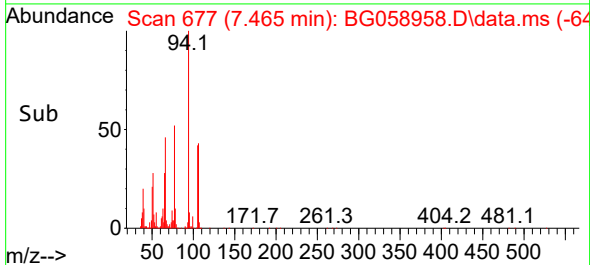
Tgt Ion: 77 Resp: 159146
Ion Ratio Lower Upper
77 100
105 86.0 81.6 122.4
106 81.7 84.5 126.7#

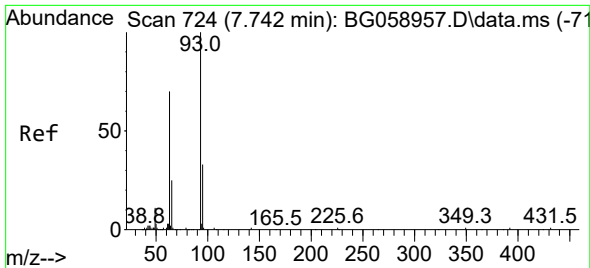


#8
Phenol
Concen: 44.102 ng/uI
RT: 7.465 min Scan# 677
Delta R.T. 0.005 min
Lab File: BG058958.D
Acq: 10 Sep 2023 19:32



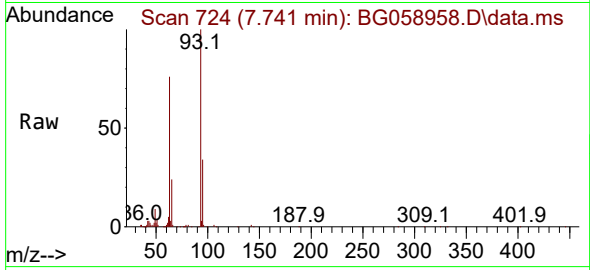
Tgt Ion: 94 Resp: 278856
Ion Ratio Lower Upper
94 100
65 28.0 22.4 33.6
66 45.5 35.0 52.6





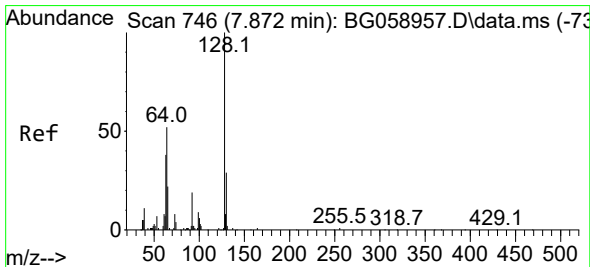
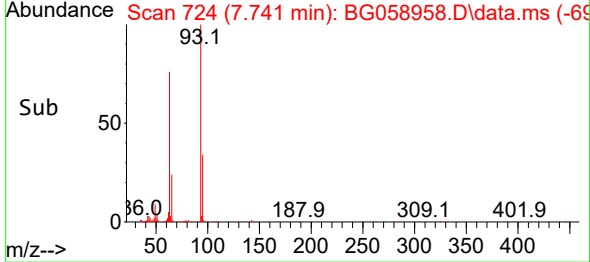
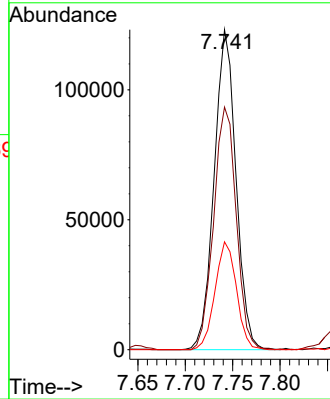
#10
 Bis(2-Chloroethyl)ether
 Concen: 42.085 ng/ul
 RT: 7.741 min Scan# 71
 Delta R.T. -0.001 min
 Lab File: BG058958.D
 Acq: 10 Sep 2023 19:32

Instrument :
 BNA_G
 ClientSampleId :
 SSTD040410



Tgt Ion: 93 Resp: 197355

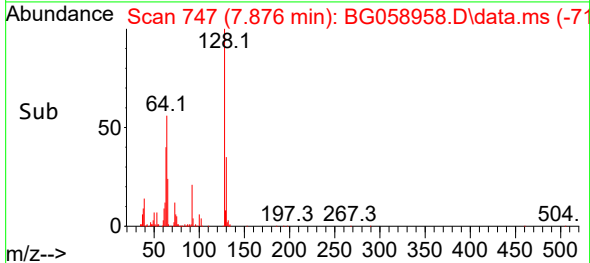
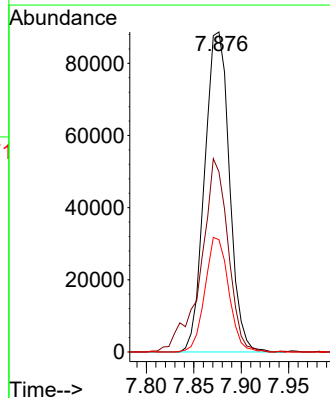
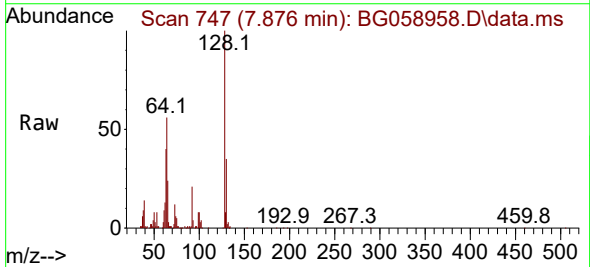
Ion	Ratio	Lower	Upper
93	100		
63	75.8	56.2	84.4
95	33.7	26.4	39.6

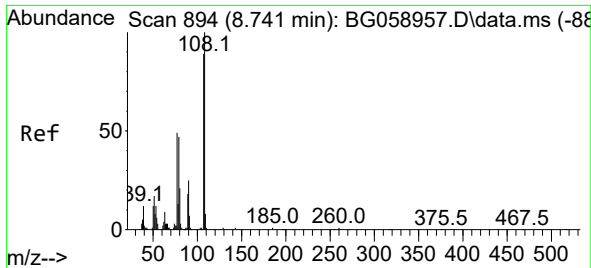


#12
 2-Chlorophenol
 Concen: 44.220 ng/ul
 RT: 7.876 min Scan# 747
 Delta R.T. 0.005 min
 Lab File: BG058958.D
 Acq: 10 Sep 2023 19:32

Tgt Ion: 128 Resp: 161254

Ion	Ratio	Lower	Upper
128	100		
64	56.3	43.1	64.7
130	35.1	23.2	34.8

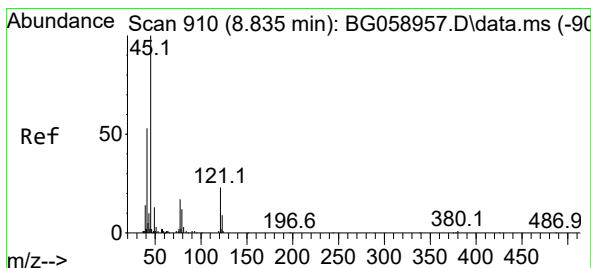
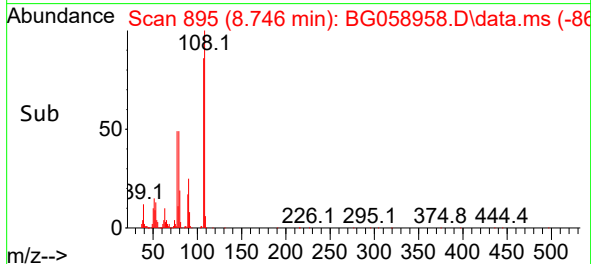
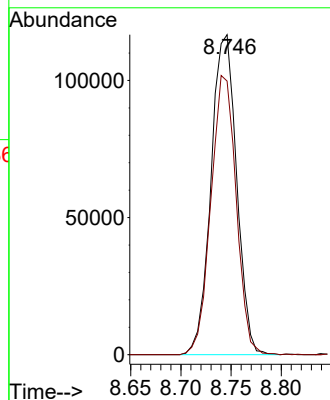
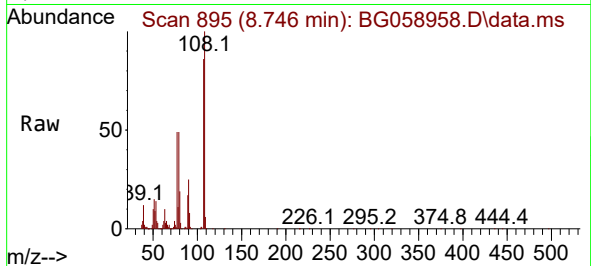




#13
 2-Methylphenol
 Concen: 43.724 ng/ul
 RT: 8.746 min Scan# 894
 Delta R.T. 0.005 min
 Lab File: BG058958.D
 Acq: 10 Sep 2023 19:32

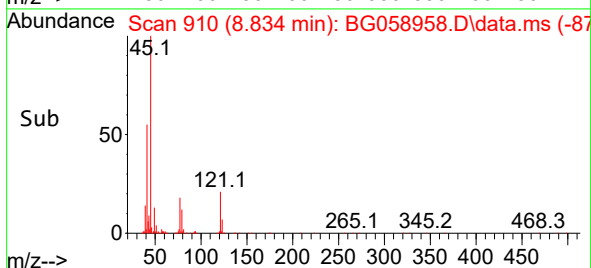
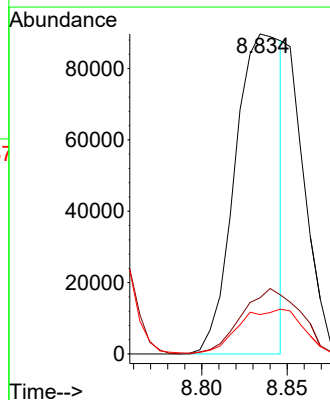
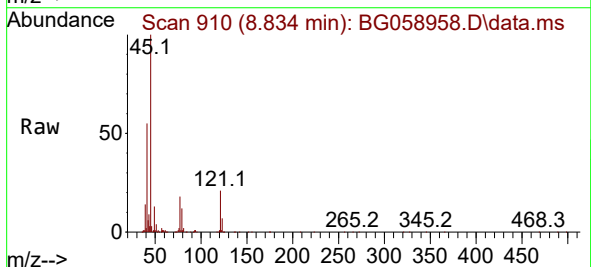
Instrument :
 BNA_G
 ClientSampleId :
 SSTD040410

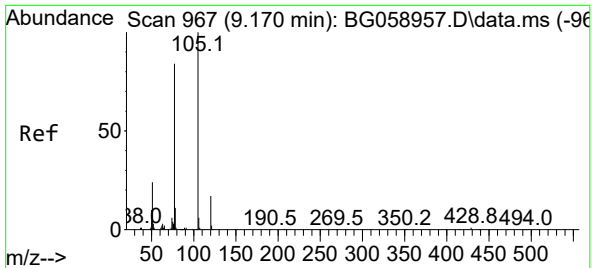
Tgt Ion:108 Resp: 207004
 Ion Ratio Lower Upper
 108 100
 107 85.5 71.2 106.8



#14
 2,2'-oxybis(1-Chloropropane)
 Concen: 31.468 ng/ul
 RT: 8.834 min Scan# 910
 Delta R.T. -0.001 min
 Lab File: BG058958.D
 Acq: 10 Sep 2023 19:32

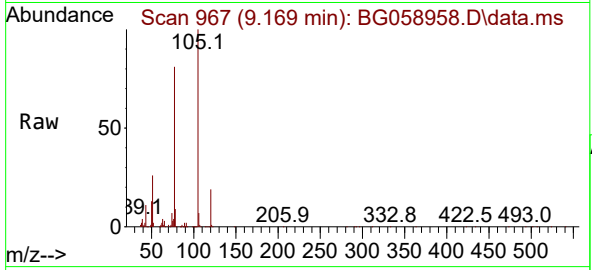
Tgt Ion: 45 Resp: 169831
 Ion Ratio Lower Upper
 45 100
 77 17.5 13.2 19.8
 79 12.3 9.8 14.6





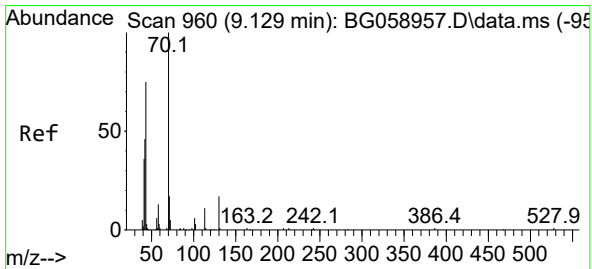
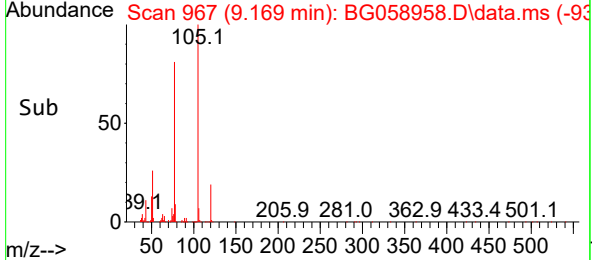
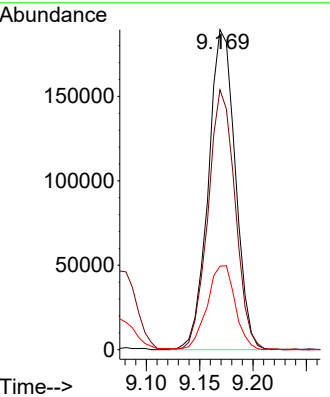
#16
 Acetophenone
 Concen: 39.765 ng/ul
 RT: 9.169 min Scan# 967
 Delta R.T. -0.001 min
 Lab File: BG058958.D
 Acq: 10 Sep 2023 19:32

Instrument : BNA_G
 ClientSampleId : SSTD040410

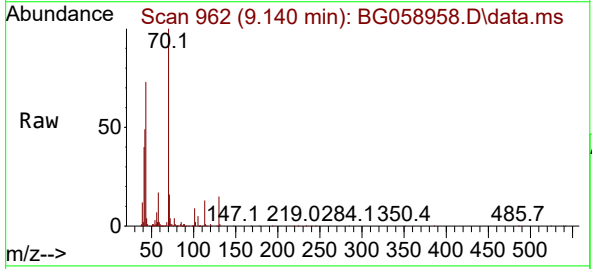


Tgt Ion: 105 Resp: 333188

Ion	Ratio	Lower	Upper
105	100		
77	81.2	67.3	100.9
51	26.1	19.3	28.9

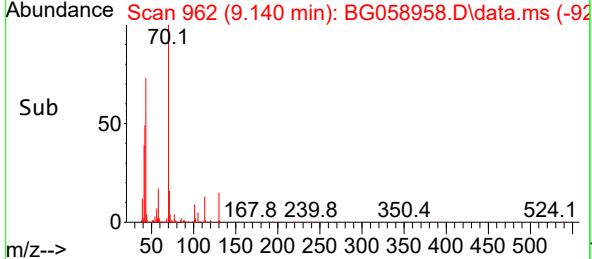
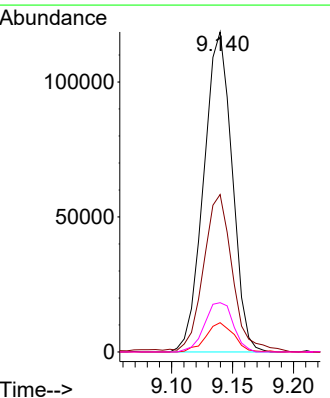


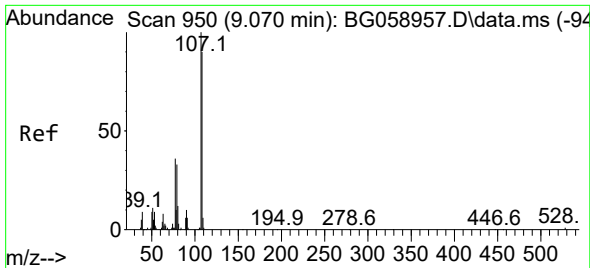
#17
 N-Nitroso-di-n-propylamine
 Concen: 43.799 ng/ul
 RT: 9.140 min Scan# 962
 Delta R.T. 0.011 min
 Lab File: BG058958.D
 Acq: 10 Sep 2023 19:32



Tgt Ion: 70 Resp: 191945

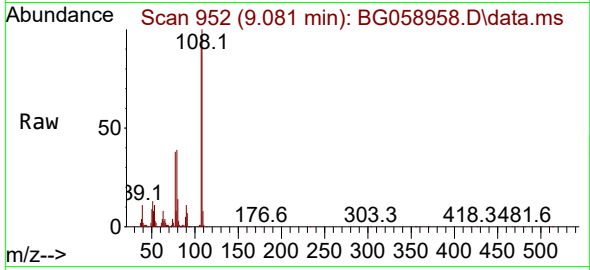
Ion	Ratio	Lower	Upper
70	100		
42	49.2	37.5	56.3
101	9.2	5.0	7.6#
130	15.4	13.9	20.9



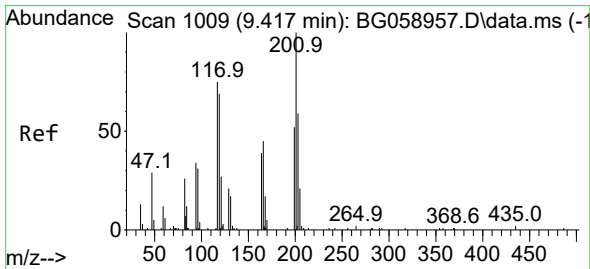
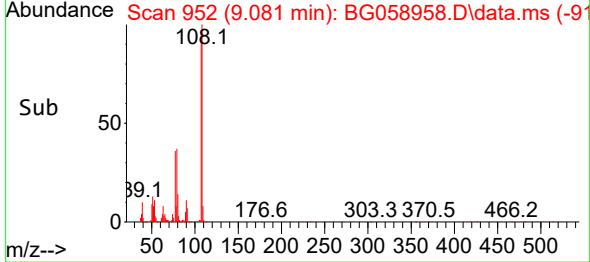
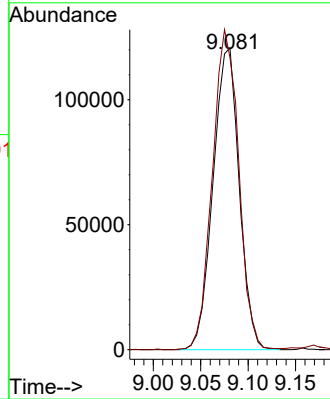


#18
 4-Methylphenol
 Concen: 44.748 ng/ul
 RT: 9.081 min Scan# 91
 Delta R.T. 0.011 min
 Lab File: BG058958.D
 Acq: 10 Sep 2023 19:32

Instrument :
 BNA_G
 ClientSampleId :
 SSTD040410

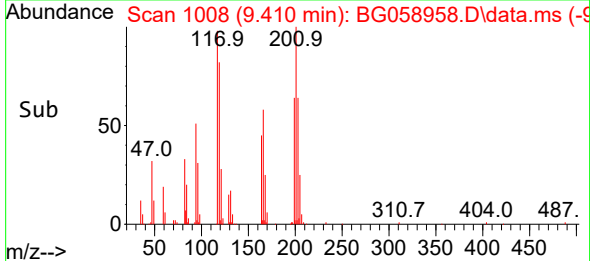
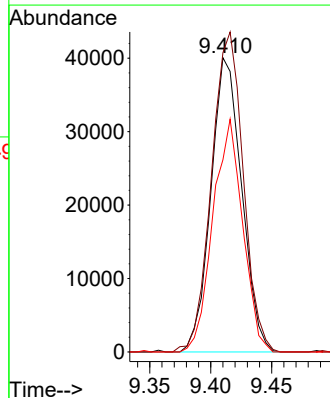
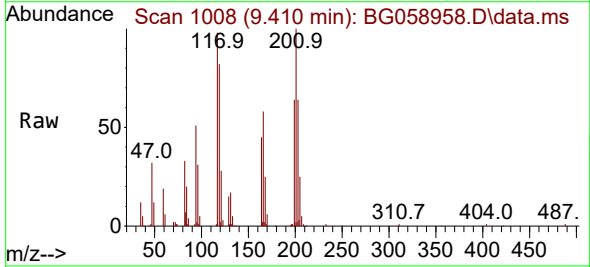


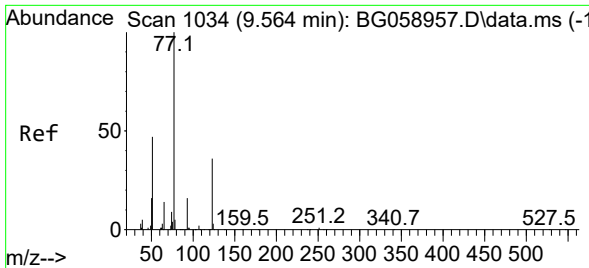
Tgt Ion:108 Resp: 231828
 Ion Ratio Lower Upper
 108 100
 107 96.7 88.9 133.3



#19
 Hexachloroethane
 Concen: 47.298 ng/ul
 RT: 9.410 min Scan# 1008
 Delta R.T. -0.007 min
 Lab File: BG058958.D
 Acq: 10 Sep 2023 19:32

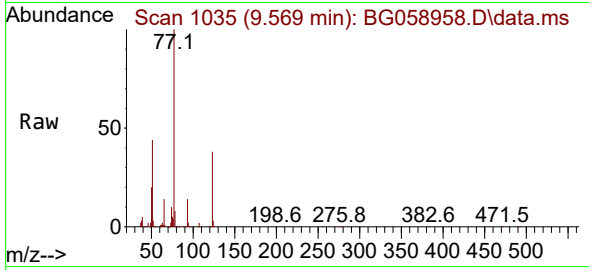
Tgt Ion:117 Resp: 70396
 Ion Ratio Lower Upper
 117 100
 201 101.7 108.2 162.4#
 199 66.9 56.0 84.0



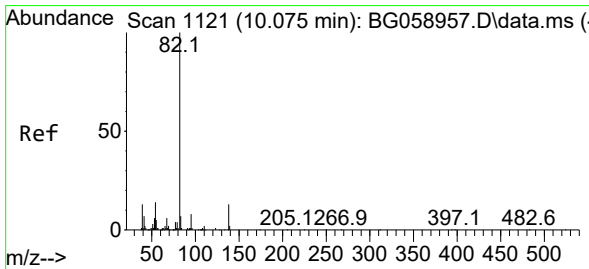
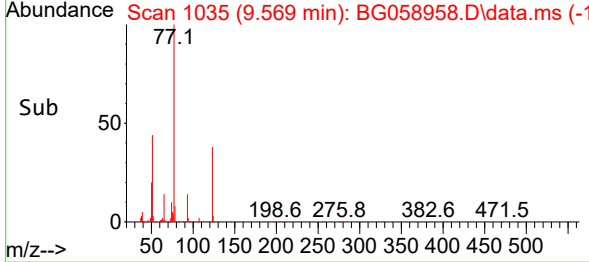
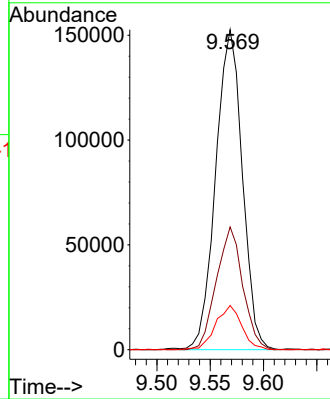


#22
 Nitrobenzene
 Concen: 46.192 ng/u1
 RT: 9.569 min Scan# 1035
 Delta R.T. 0.005 min
 Lab File: BG058958.D
 Acq: 10 Sep 2023 19:32

Instrument :
 BNA_G
 ClientSampleId :
 SSTD040410

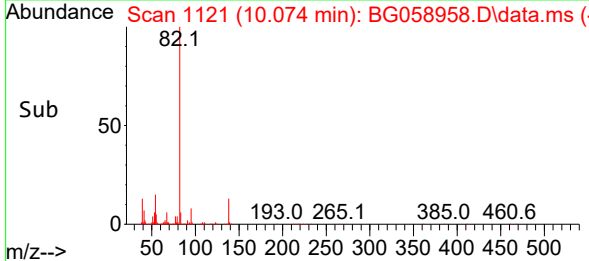
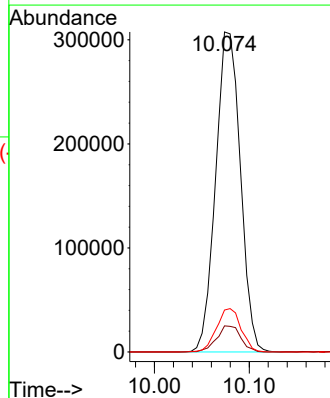
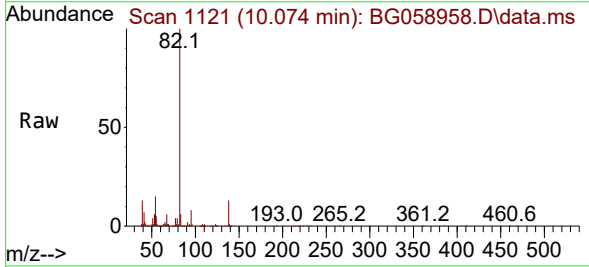


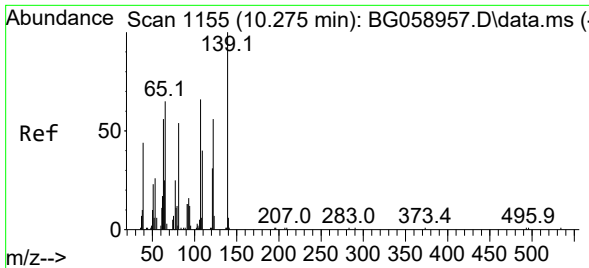
Tgt Ion: 77 Resp: 264516
 Ion Ratio Lower Upper
 77 100
 123 38.3 28.5 42.7
 65 13.8 11.5 17.3



#23
 Isophorone
 Concen: 39.029 ng/u1
 RT: 10.074 min Scan# 1121
 Delta R.T. -0.001 min
 Lab File: BG058958.D
 Acq: 10 Sep 2023 19:32

Tgt Ion: 82 Resp: 557624
 Ion Ratio Lower Upper
 82 100
 95 8.2 6.6 9.8
 138 13.1 10.4 15.6

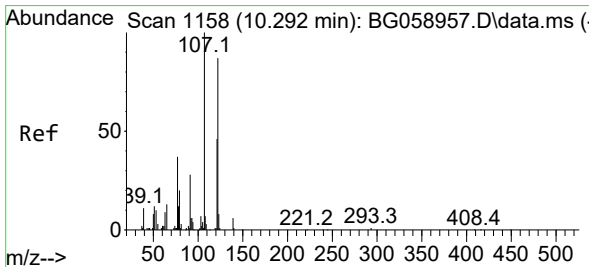
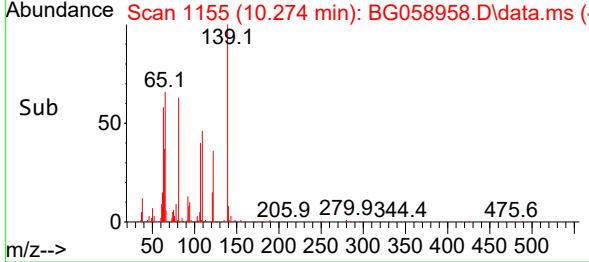
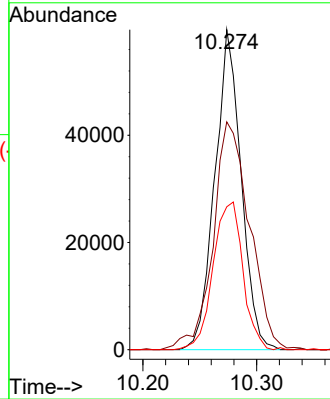
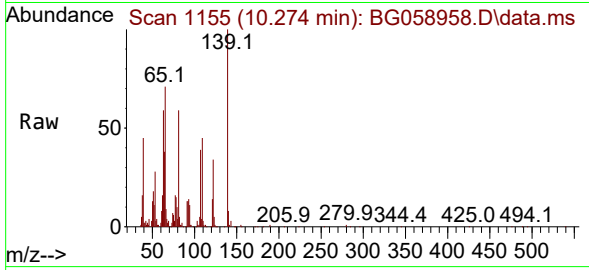




#25
 2-Nitrophenol
 Concen: 48.497 ng/ul
 RT: 10.274 min Scan# 1155
 Delta R.T. -0.001 min
 Lab File: BG058958.D
 Acq: 10 Sep 2023 19:32

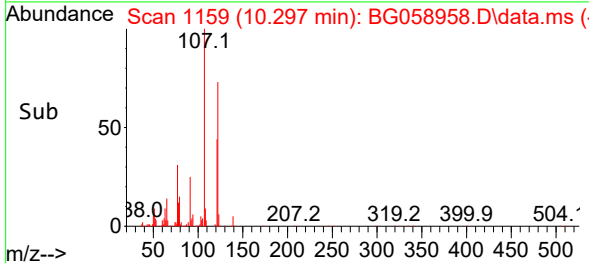
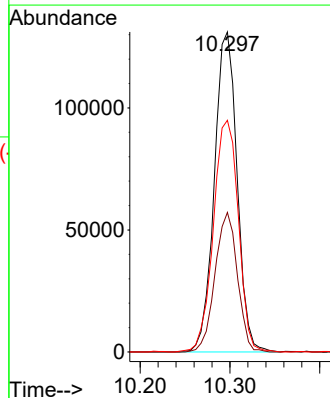
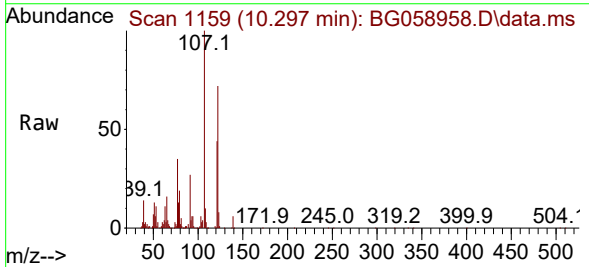
Instrument :
 BNA_G
 ClientSampleId :
 SSTD040410

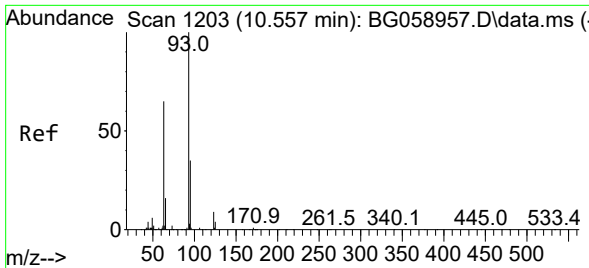
Tgt Ion	Resp	Lower	Upper
139	95947		
65	71.2	53.5	80.3
109	44.7	32.0	48.0



#26
 2,4-Dimethylphenol
 Concen: 37.470 ng/ul
 RT: 10.297 min Scan# 1159
 Delta R.T. 0.005 min
 Lab File: BG058958.D
 Acq: 10 Sep 2023 19:32

Tgt Ion	Resp	Lower	Upper
107	230477		
121	43.6	36.4	54.6
122	72.4	69.4	104.0



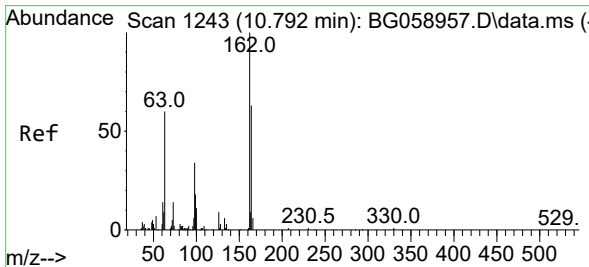
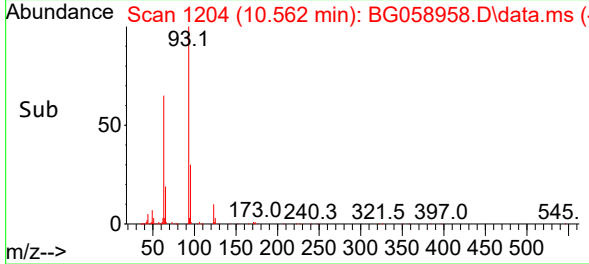
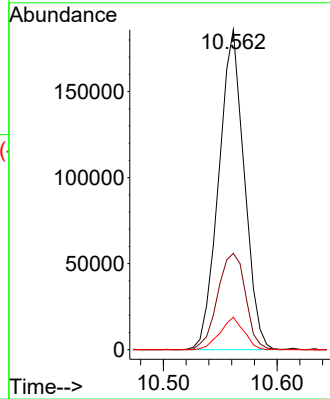
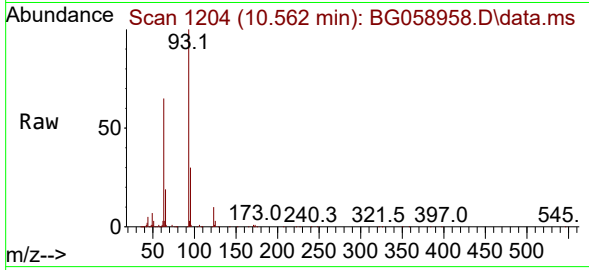


#27
 Bis(2-Chloroethoxy)methane
 Concen: 39.218 ng/ul
 RT: 10.562 min Scan# 11
 Delta R.T. 0.005 min
 Lab File: BG058958.D
 Acq: 10 Sep 2023 19:32

Instrument :
 BNA_G
 ClientSampleId :
 SSTD040410

Tgt Ion: 93 Resp: 290166

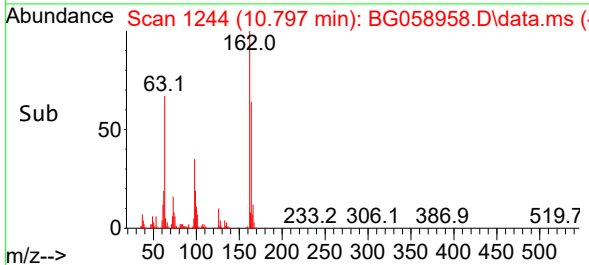
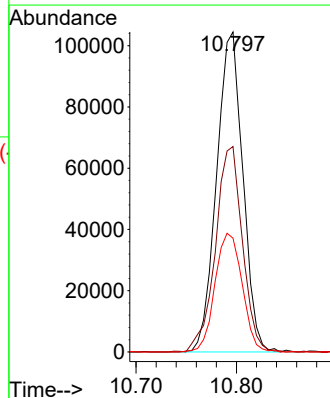
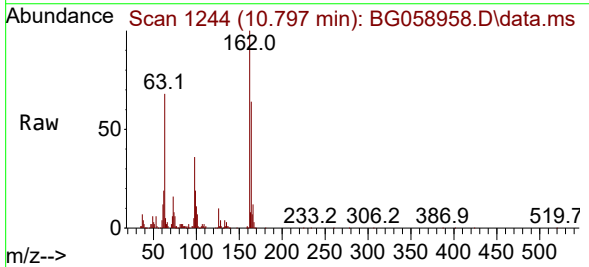
Ion	Ratio	Lower	Upper
93	100		
95	30.1	27.8	41.6
123	10.2	7.3	10.9

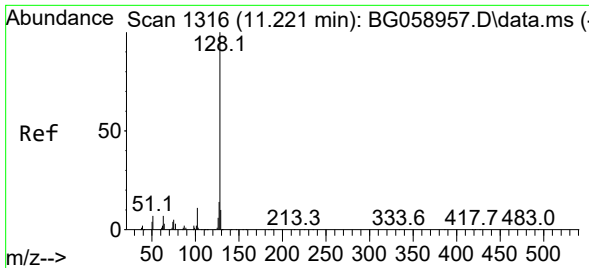


#29
 2,4-Dichlorophenol
 Concen: 37.597 ng/ul
 RT: 10.797 min Scan# 1244
 Delta R.T. 0.005 min
 Lab File: BG058958.D
 Acq: 10 Sep 2023 19:32

Tgt Ion: 162 Resp: 189635

Ion	Ratio	Lower	Upper
162	100		
164	64.2	51.4	77.0
98	35.6	27.2	40.8

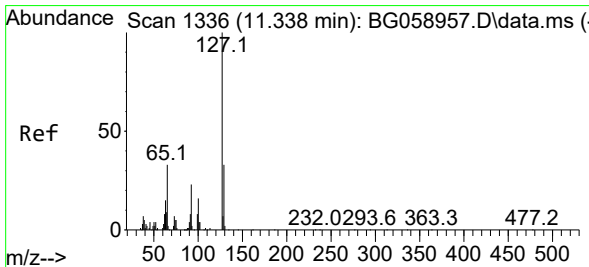
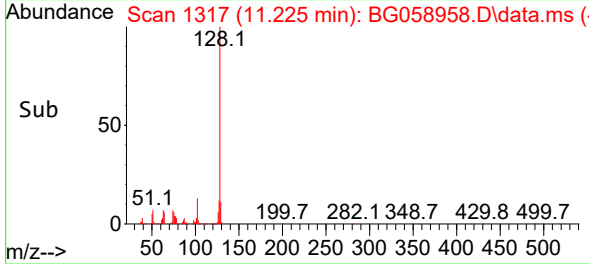
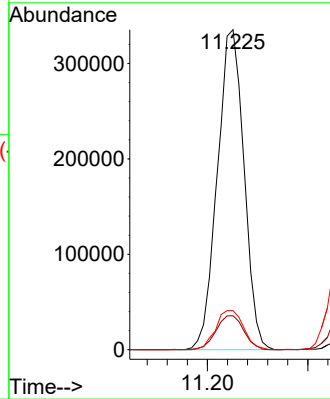
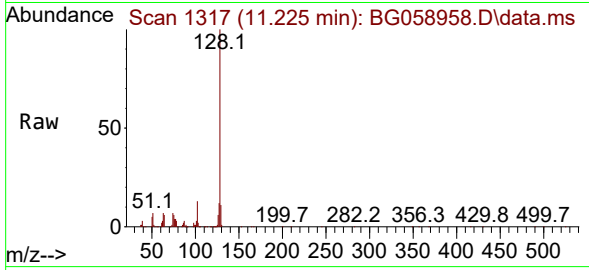




#30
 Naphthalene
 Concen: 40.243 ng/u1
 RT: 11.225 min Scan# 11
 Delta R.T. 0.005 min
 Lab File: BG058958.D
 Acq: 10 Sep 2023 19:32

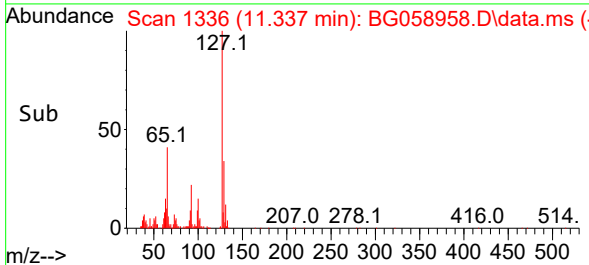
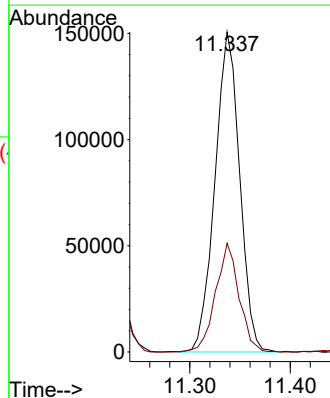
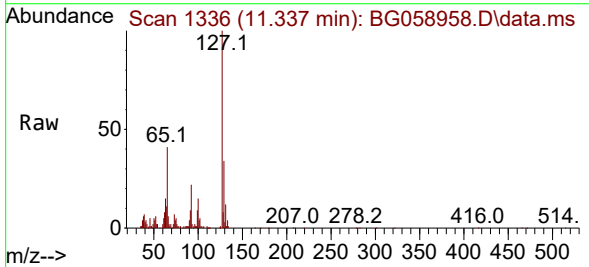
Instrument :
 BNA_G
 ClientSampleId :
 SSTD040410

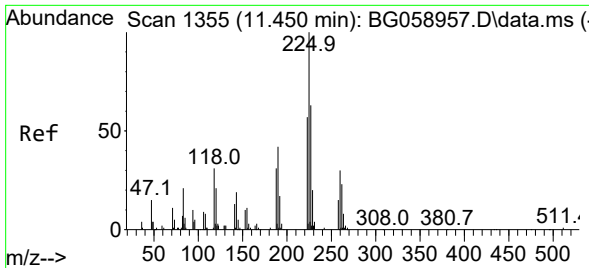
Tgt Ion:128 Resp: 617957
 Ion Ratio Lower Upper
 128 100
 129 10.6 8.2 12.2
 127 12.2 10.9 16.3



#32
 4-Chloroaniline
 Concen: 39.739 ng/u1
 RT: 11.337 min Scan# 1336
 Delta R.T. -0.001 min
 Lab File: BG058958.D
 Acq: 10 Sep 2023 19:32

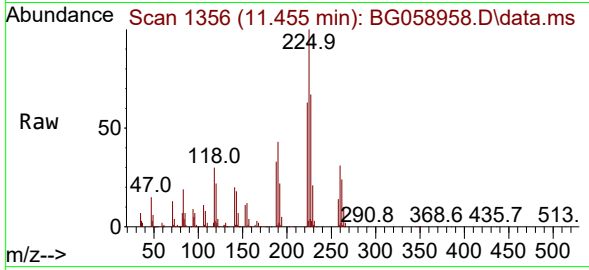
Tgt Ion:127 Resp: 257276
 Ion Ratio Lower Upper
 127 100
 129 34.0 26.6 39.8



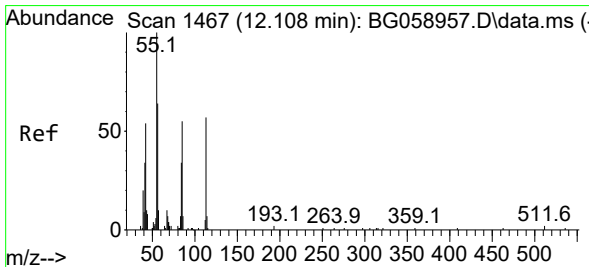
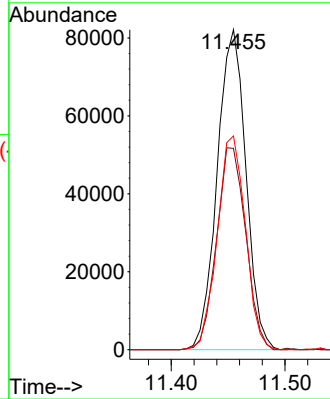
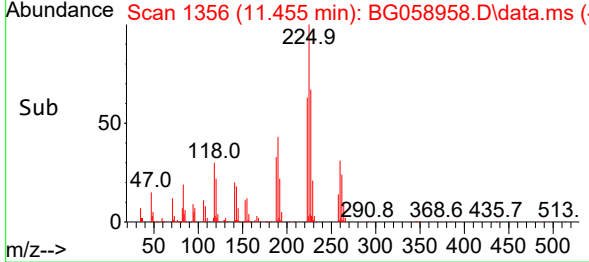


#33
 Hexachlorobutadiene
 Concen: 29.181 ng/uI
 RT: 11.455 min Scan# 11455
 Delta R.T. 0.005 min
 Lab File: BG058958.D
 Acq: 10 Sep 2023 19:32

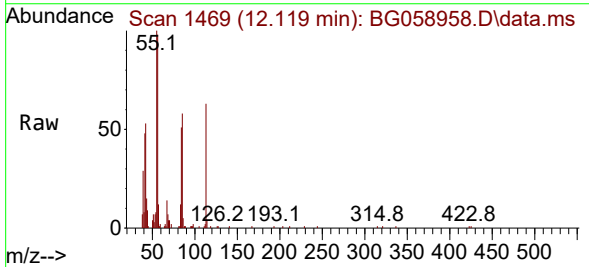
Instrument :
 BNA_G
 ClientSampleId :
 SSTD040410



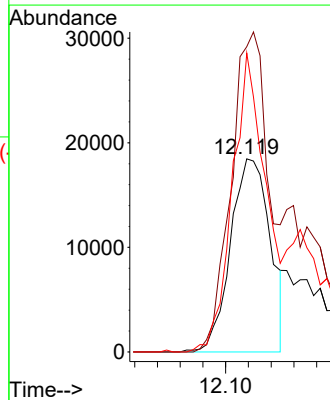
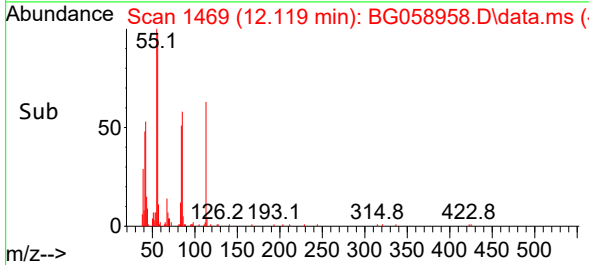
Tgt Ion:225 Resp: 144148
 Ion Ratio Lower Upper
 225 100
 223 62.9 45.5 68.3
 227 66.8 50.2 75.4

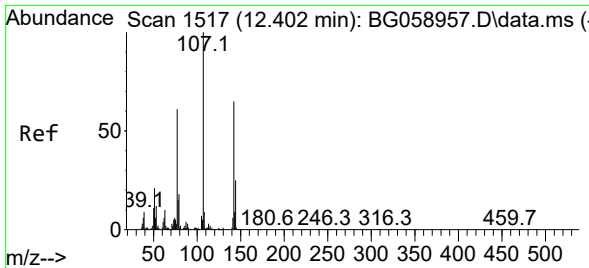


#34
 Caprolactam
 Concen: 26.783 ng/uI
 RT: 12.119 min Scan# 1469
 Delta R.T. 0.011 min
 Lab File: BG058958.D
 Acq: 10 Sep 2023 19:32



Tgt Ion:113 Resp: 44689
 Ion Ratio Lower Upper
 113 100
 55 158.0 140.5 210.7
 56 154.7 90.4 135.6#



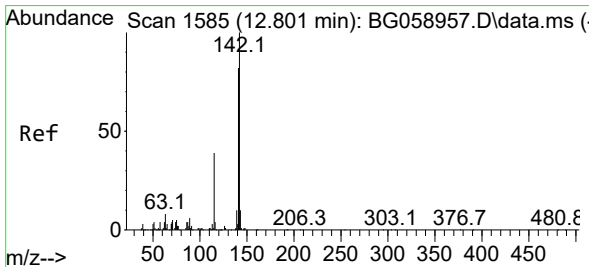
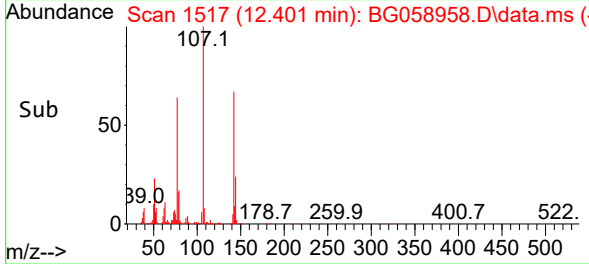
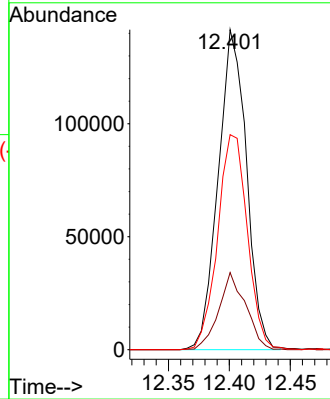
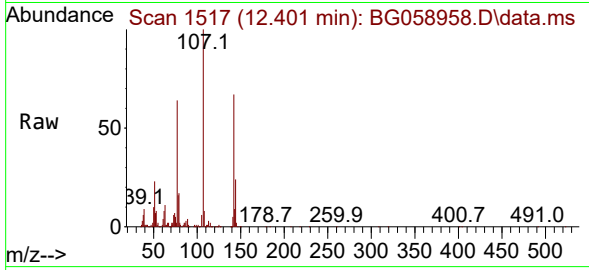


#35
 4-Chloro-3-methylphenol
 Concen: 38.591 ng/ul
 RT: 12.401 min Scan# 1517
 Delta R.T. -0.001 min
 Lab File: BG058958.D
 Acq: 10 Sep 2023 19:32

Instrument :
 BNA_G
 ClientSampleId :
 SSTD040410

Tgt Ion:107 Resp: 228697

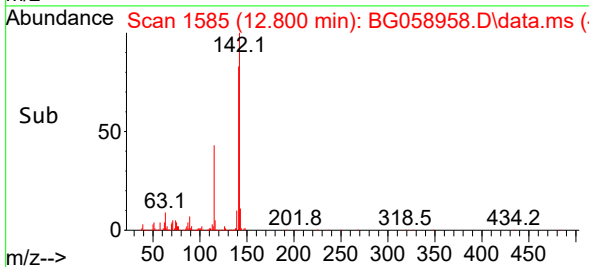
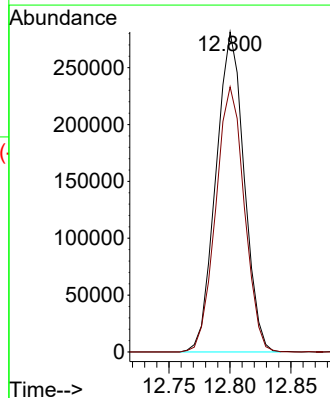
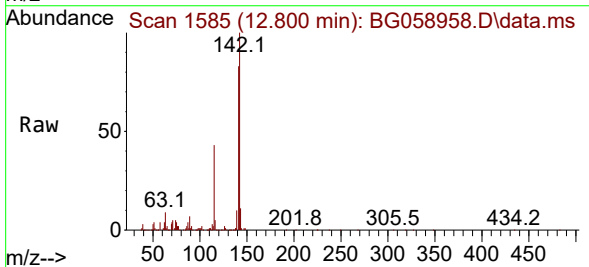
Ion	Ratio	Lower	Upper
107	100		
144	24.1	20.2	30.2
142	67.2	51.6	77.4

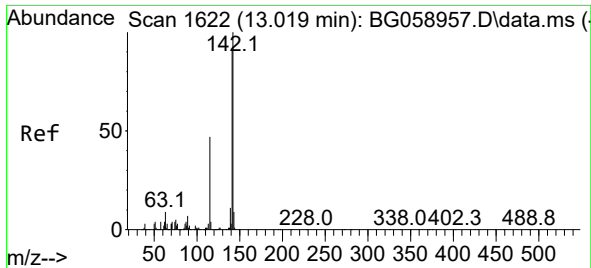


#36
 2-Methylnaphthalene
 Concen: 38.999 ng/ul
 RT: 12.800 min Scan# 1585
 Delta R.T. -0.001 min
 Lab File: BG058958.D
 Acq: 10 Sep 2023 19:32

Tgt Ion:142 Resp: 453342

Ion	Ratio	Lower	Upper
142	100		
141	82.9	65.7	98.5





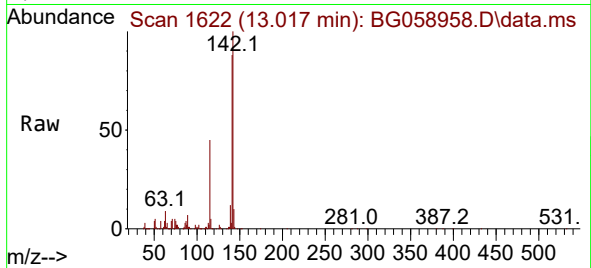
#37
 1-Methylnaphthalene
 Concen: 38.162 ng/ul
 RT: 13.017 min Scan# 1
 Delta R.T. -0.001 min
 Lab File: BG058958.D
 Acq: 10 Sep 2023 19:32

Instrument :

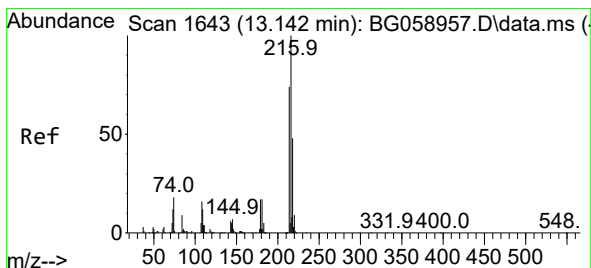
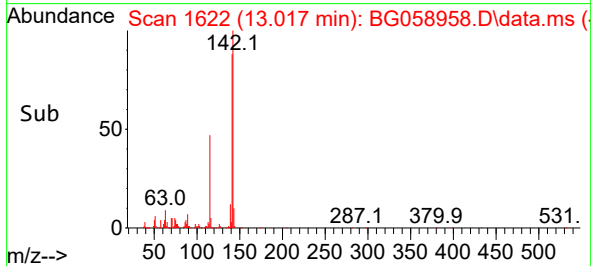
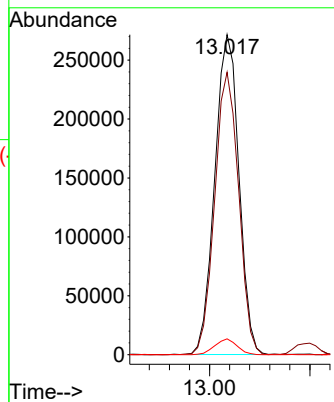
BNA_G

ClientSampleId :

SSTD040410

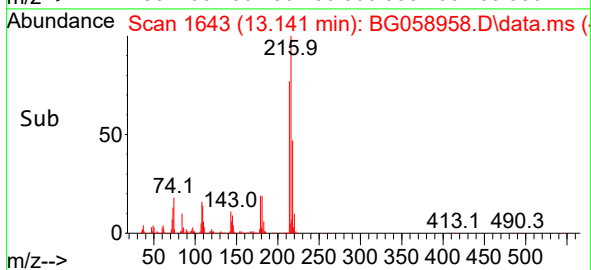
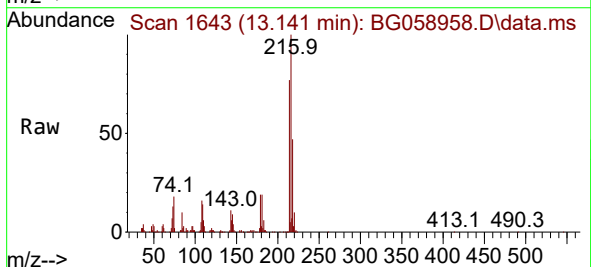
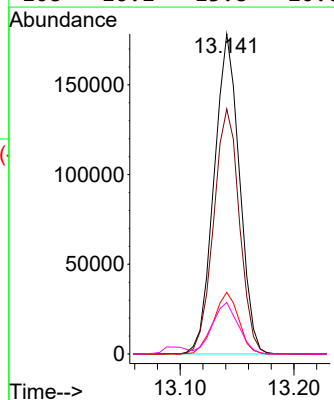


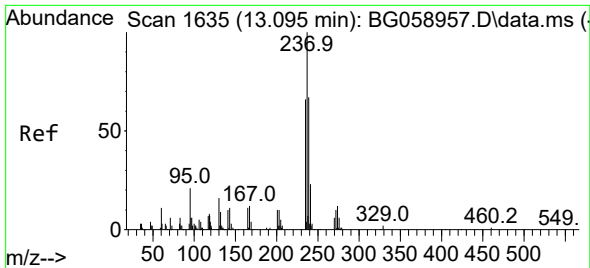
Tgt Ion:142 Resp: 453737
 Ion Ratio Lower Upper
 142 100
 141 88.2 73.1 109.7
 116 5.0 3.4 5.0



#39
 1,2,4,5-Tetrachlorobenzene
 Concen: 37.045 ng/ul
 RT: 13.141 min Scan# 1643
 Delta R.T. -0.001 min
 Lab File: BG058958.D
 Acq: 10 Sep 2023 19:32

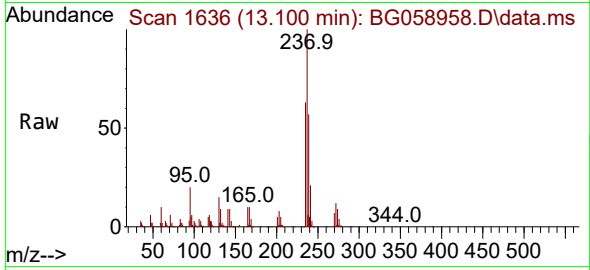
Tgt Ion:216 Resp: 276223
 Ion Ratio Lower Upper
 216 100
 214 76.5 59.6 89.4
 179 19.3 13.6 20.4
 108 16.1 13.8 20.6



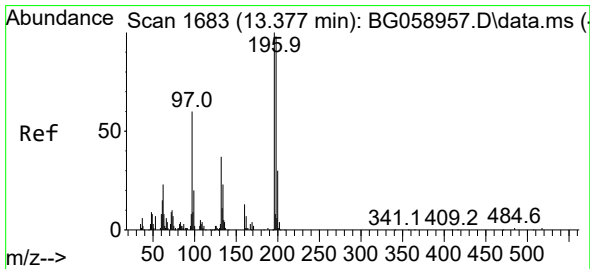
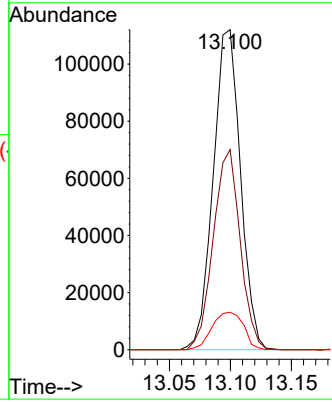
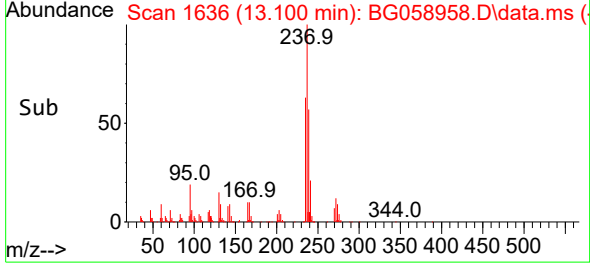


#40
 Hexachlorocyclopentadiene
 Concen: 32.459 ng/ul
 RT: 13.100 min Scan# 1636
 Delta R.T. 0.005 min
 Lab File: BG058958.D
 Acq: 10 Sep 2023 19:32

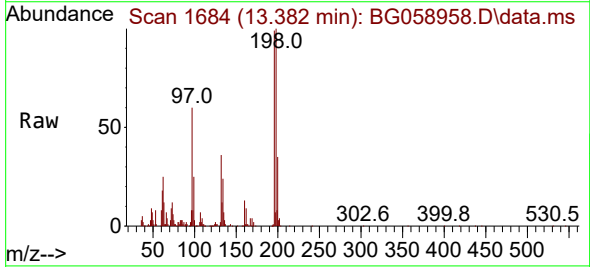
Instrument :
 BNA_G
 ClientSampleId :
 SSTD040410



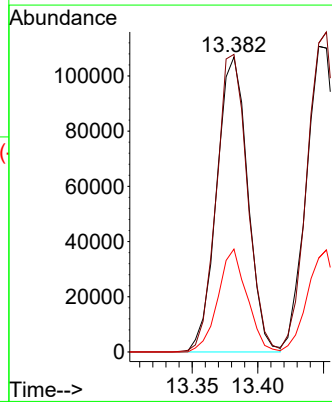
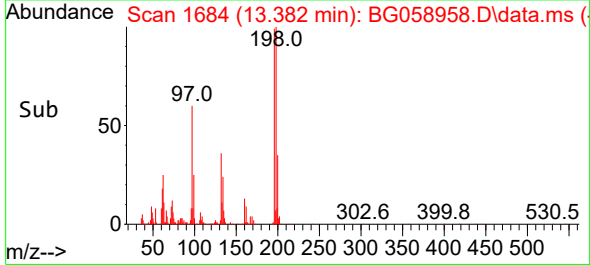
Tgt Ion:237 Resp: 174186
 Ion Ratio Lower Upper
 237 100
 235 62.5 52.6 78.8
 272 11.7 8.6 13.0

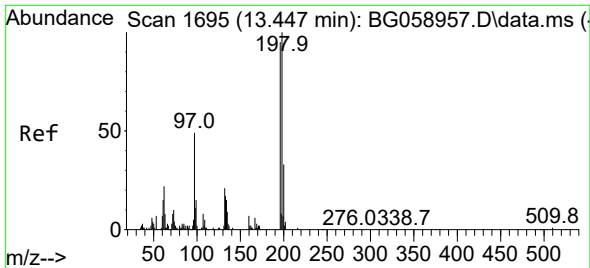


#41
 2,4,6-Trichlorophenol
 Concen: 40.582 ng/ul
 RT: 13.382 min Scan# 1684
 Delta R.T. 0.005 min
 Lab File: BG058958.D
 Acq: 10 Sep 2023 19:32



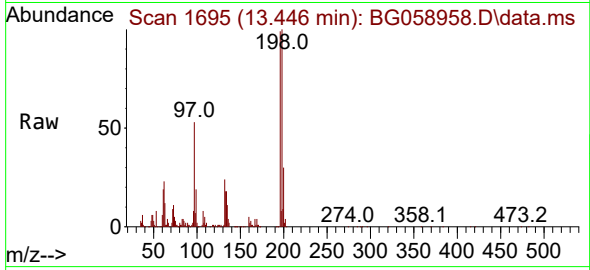
Tgt Ion:196 Resp: 175840
 Ion Ratio Lower Upper
 196 100
 198 101.0 78.3 117.5
 200 34.9 23.7 35.5



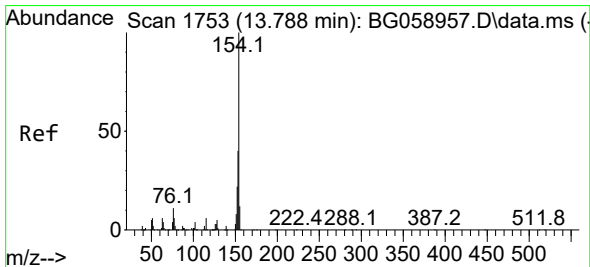
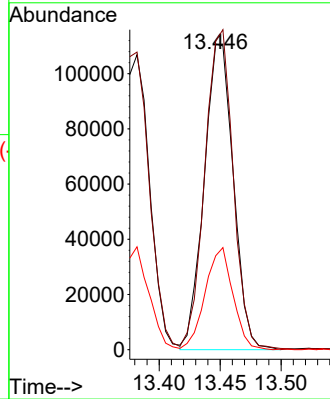
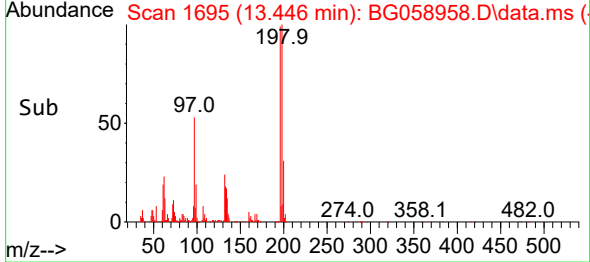


#42
 2,4,5-Trichlorophenol
 Concen: 39.965 ng/ul
 RT: 13.446 min Scan# 1695
 Delta R.T. -0.001 min
 Lab File: BG058958.D
 Acq: 10 Sep 2023 19:32

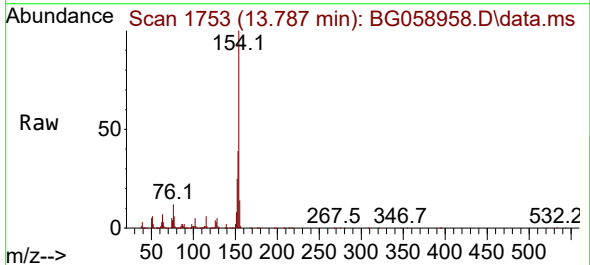
Instrument : BNA_G
 ClientSampleId : SSTD040410



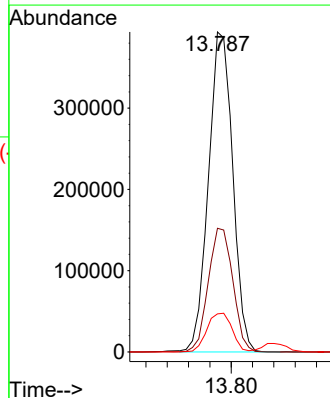
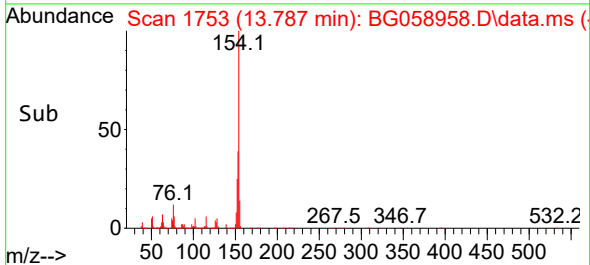
Tgt Ion:196 Resp: 185659
 Ion Ratio Lower Upper
 196 100
 198 101.0 84.8 127.2
 200 30.7 27.7 41.5

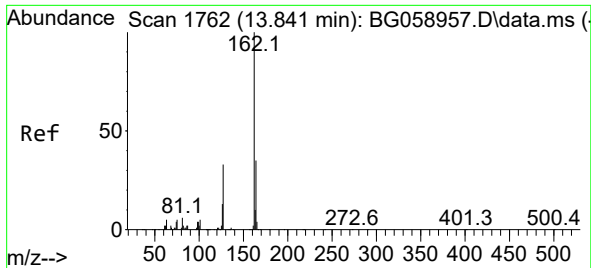


#43
 1,1'-Biphenyl
 Concen: 45.654 ng/ul
 RT: 13.787 min Scan# 1753
 Delta R.T. -0.001 min
 Lab File: BG058958.D
 Acq: 10 Sep 2023 19:32



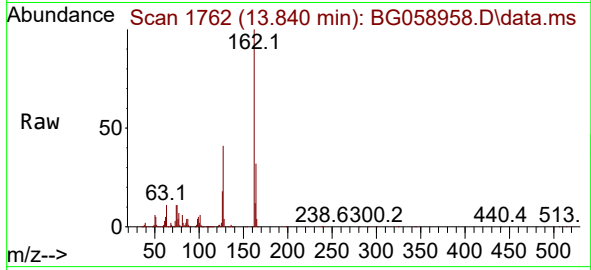
Tgt Ion:154 Resp: 620752
 Ion Ratio Lower Upper
 154 100
 153 38.7 31.6 47.4
 76 11.9 9.0 13.4



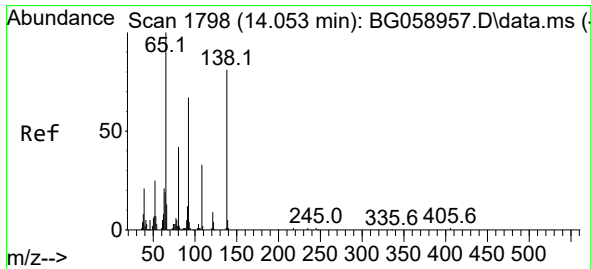
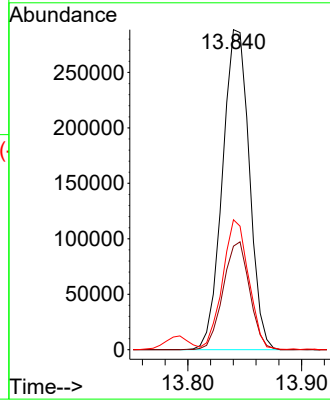
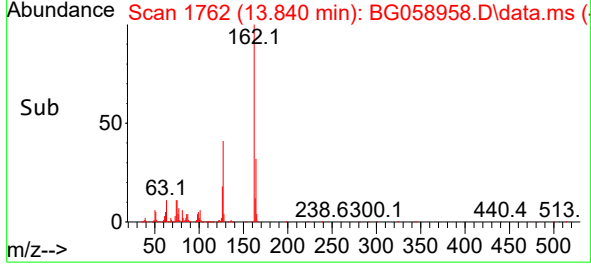


#44
 2-Chloronaphthalene
 Concen: 43.625 ng/ul
 RT: 13.840 min Scan# 1762
 Delta R.T. -0.001 min
 Lab File: BG058958.D
 Acq: 10 Sep 2023 19:32

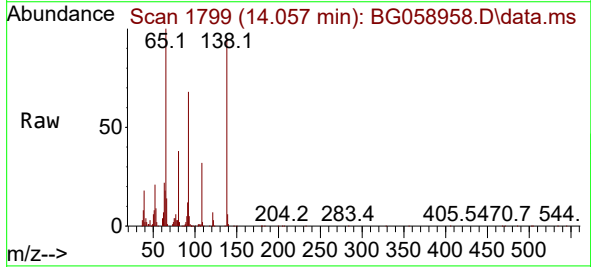
Instrument : BNA_G
 ClientSampleId : SSTD040410



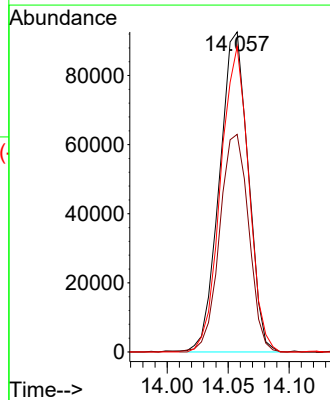
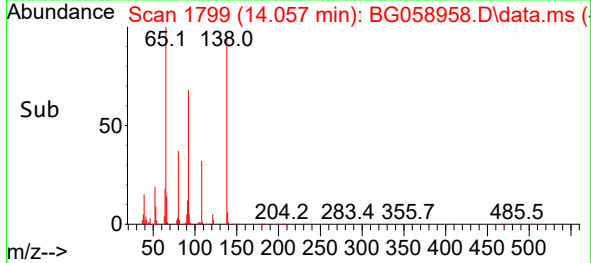
Tgt Ion:162 Resp: 473074
 Ion Ratio Lower Upper
 162 100
 164 32.3 27.6 41.4
 127 40.6 29.4 44.0

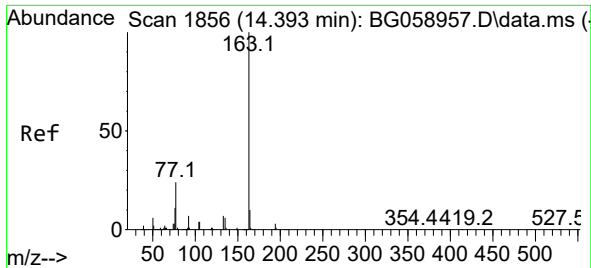


#45
 2-Nitroaniline
 Concen: 63.519 ng/ul
 RT: 14.057 min Scan# 1799
 Delta R.T. 0.005 min
 Lab File: BG058958.D
 Acq: 10 Sep 2023 19:32



Tgt Ion: 65 Resp: 152301
 Ion Ratio Lower Upper
 65 100
 92 68.0 54.0 81.0
 138 95.5 64.8 97.2

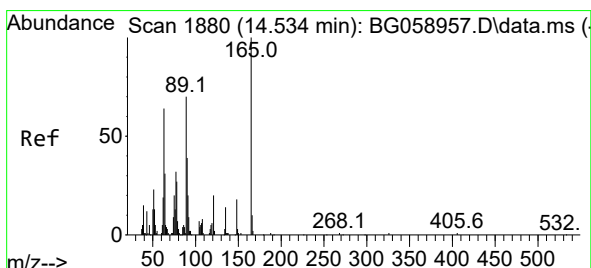
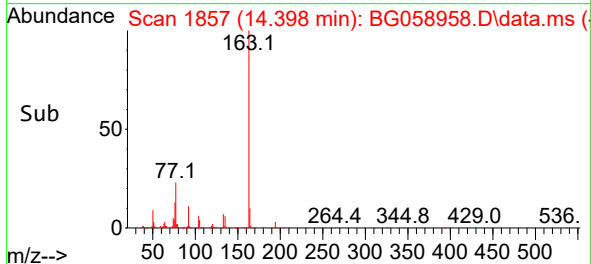
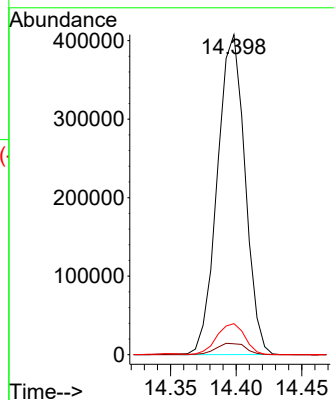
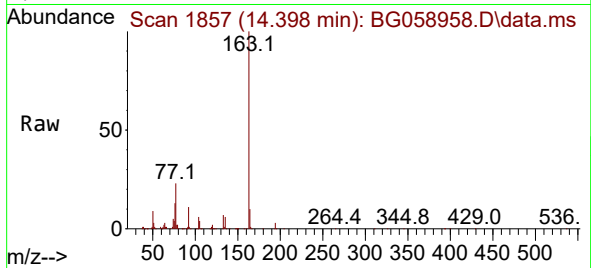




#47
 Dimethylphthalate
 Concen: 38.099 ng/ul
 RT: 14.398 min Scan# 1856
 Delta R.T. 0.005 min
 Lab File: BG058958.D
 Acq: 10 Sep 2023 19:32

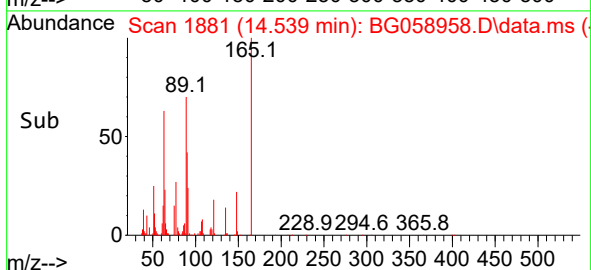
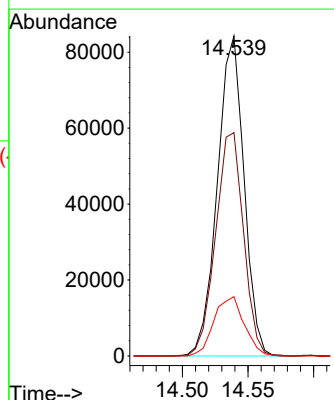
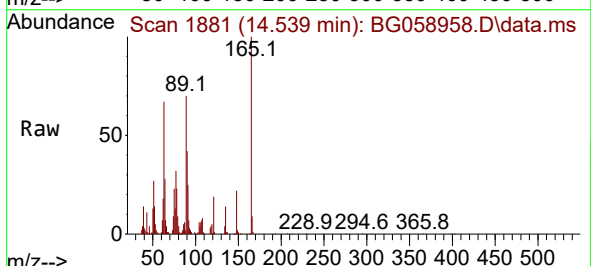
Instrument :
 BNA_G
 ClientSampleId :
 SSTD040410

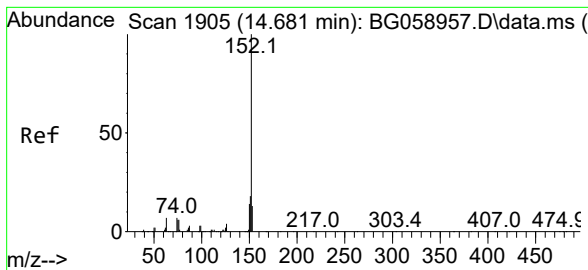
Tgt Ion:163 Resp: 597542
 Ion Ratio Lower Upper
 163 100
 194 3.4 2.8 4.2
 164 9.7 7.9 11.9



#48
 2,6-Dinitrotoluene
 Concen: 53.433 ng/ul
 RT: 14.539 min Scan# 1881
 Delta R.T. 0.005 min
 Lab File: BG058958.D
 Acq: 10 Sep 2023 19:32

Tgt Ion:165 Resp: 118945
 Ion Ratio Lower Upper
 165 100
 89 69.8 55.8 83.6
 121 18.5 16.3 24.5



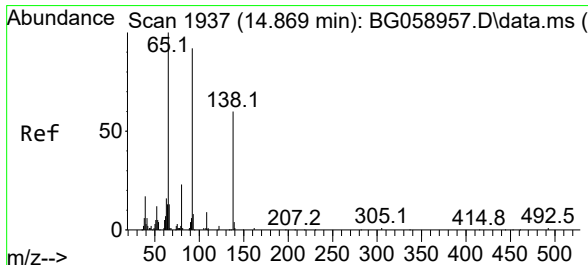
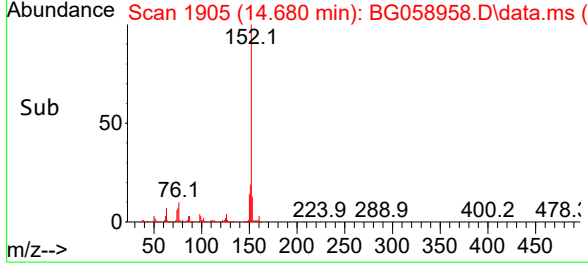
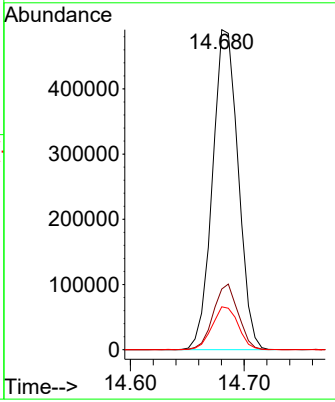
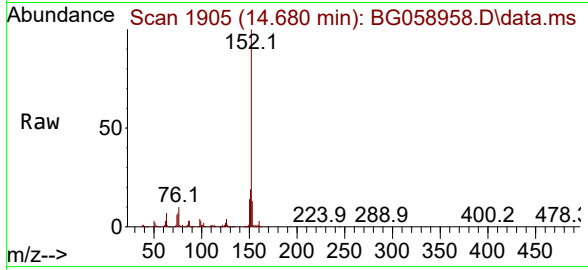


#50
 Acenaphthylene
 Concen: 41.396 ng/ul
 RT: 14.680 min Scan# 1905
 Delta R.T. -0.001 min
 Lab File: BG058958.D
 Acq: 10 Sep 2023 19:32

Instrument : BNA_G
 ClientSampleId : SSTD040410

Tgt Ion:152 Resp: 770240

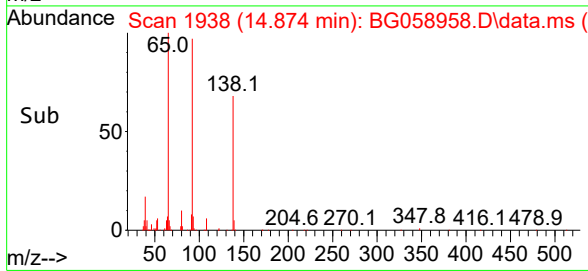
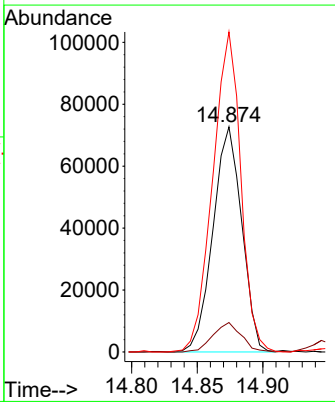
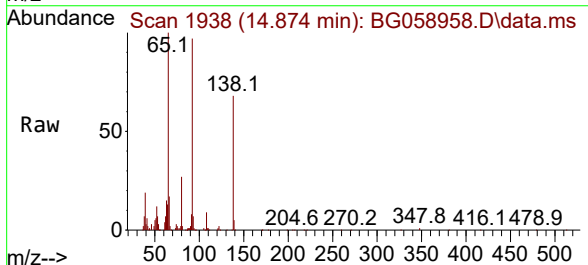
Ion	Ratio	Lower	Upper
152	100		
151	18.9	14.6	21.8
153	13.4	10.4	15.6

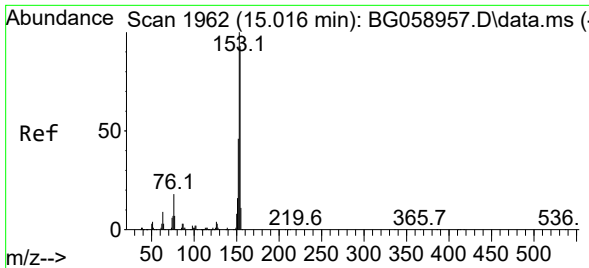


#51
 3-Nitroaniline
 Concen: 49.425 ng/ul
 RT: 14.874 min Scan# 1938
 Delta R.T. 0.005 min
 Lab File: BG058958.D
 Acq: 10 Sep 2023 19:32

Tgt Ion:138 Resp: 110868

Ion	Ratio	Lower	Upper
138	100		
108	13.1	11.8	17.6
92	142.2	122.2	183.2



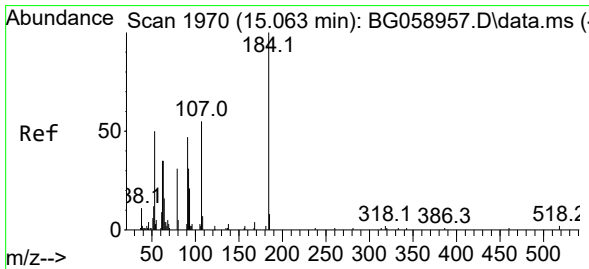
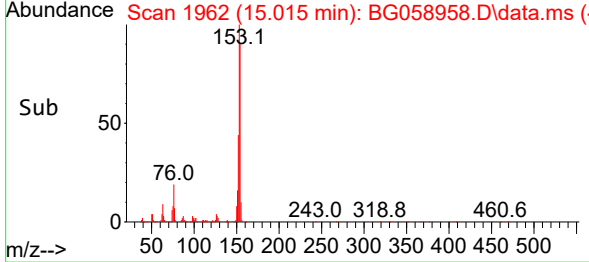
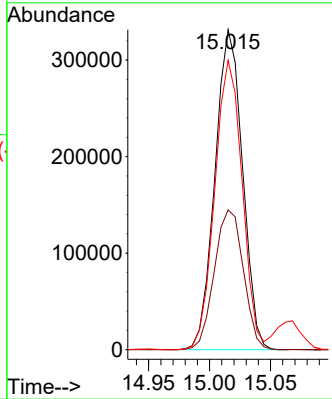
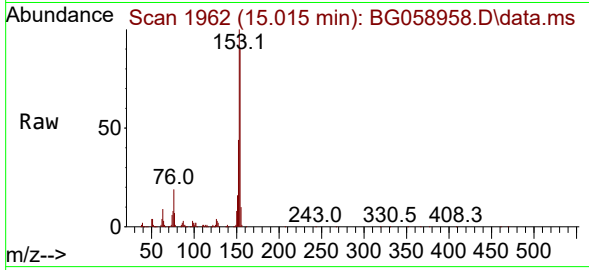


#52
 Acenaphthene
 Concen: 43.041 ng/ul
 RT: 15.015 min Scan# 1962
 Delta R.T. -0.001 min
 Lab File: BG058958.D
 Acq: 10 Sep 2023 19:32

Instrument : BNA_G
 ClientSampleId : SSTD040410

Tgt Ion:153 Resp: 521414

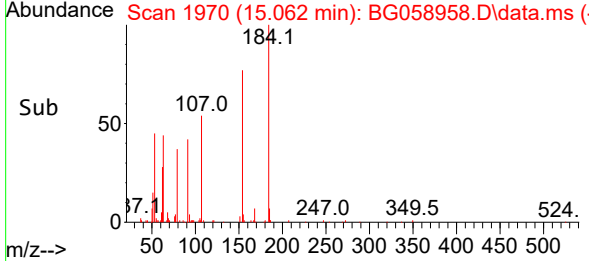
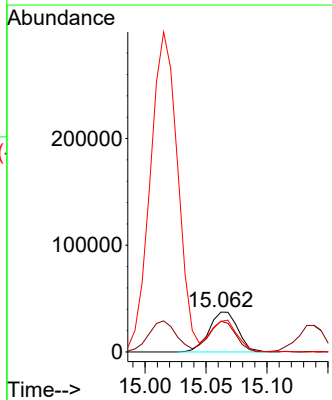
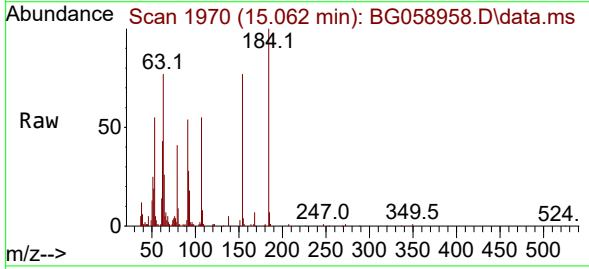
Ion	Ratio	Lower	Upper
153	100		
152	43.7	36.5	54.7
154	90.4	74.1	111.1

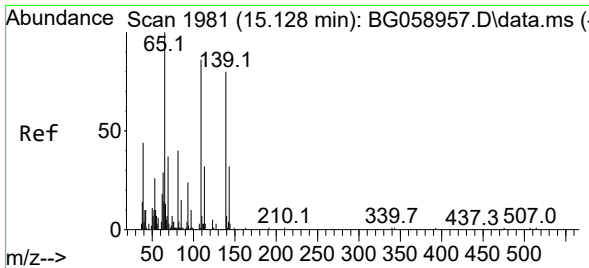


#53
 2,4-Dinitrophenol
 Concen: 32.749 ng/ul
 RT: 15.062 min Scan# 1970
 Delta R.T. -0.001 min
 Lab File: BG058958.D
 Acq: 10 Sep 2023 19:32

Tgt Ion:184 Resp: 61670

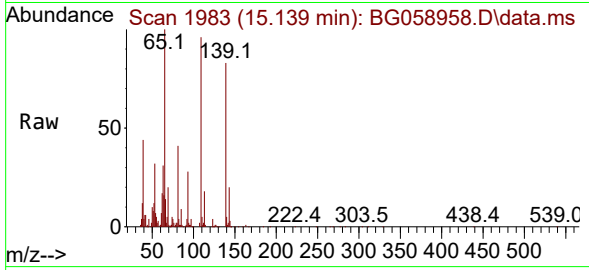
Ion	Ratio	Lower	Upper
184	100		
63	77.2	57.7	86.5
154	76.5	60.7	91.1



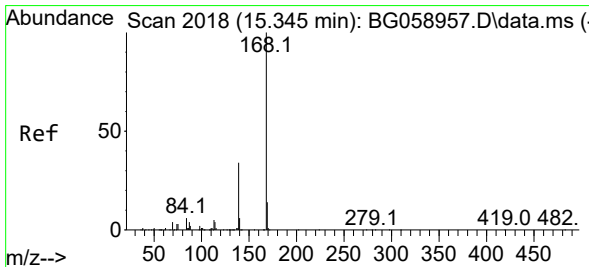
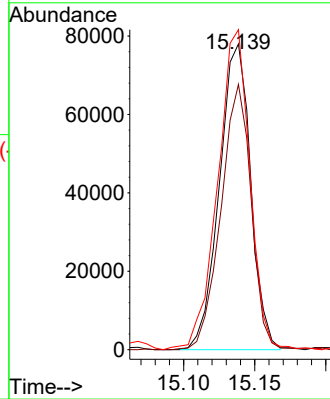
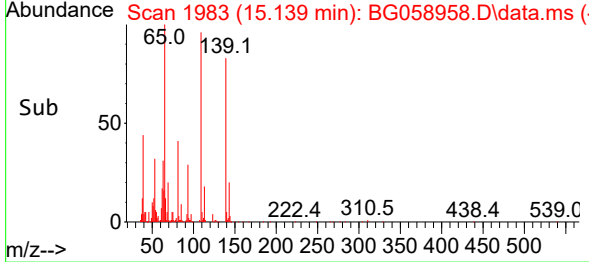


#55
 4-Nitrophenol
 Concen: 46.779 ng/ul
 RT: 15.139 min Scan# 1983
 Delta R.T. 0.011 min
 Lab File: BG058958.D
 Acq: 10 Sep 2023 19:32

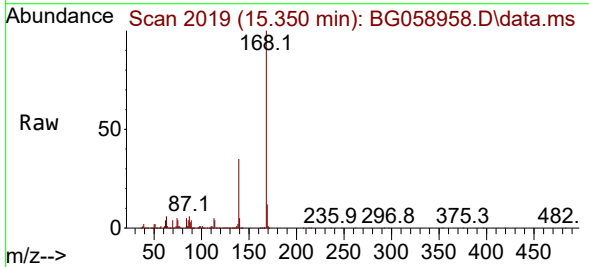
Instrument :
 BNA_G
 ClientSampleId :
 SSTD040410



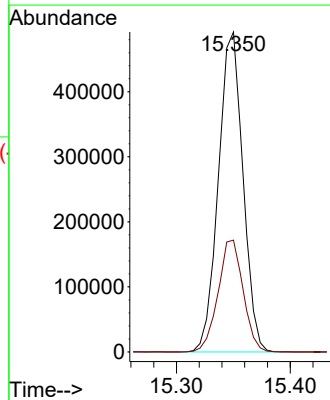
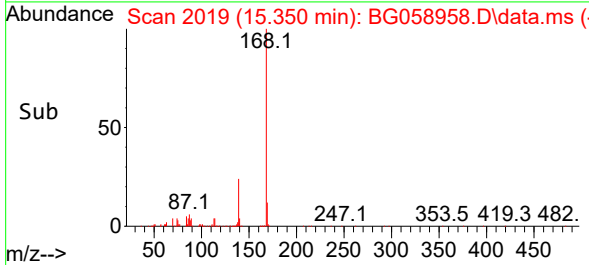
Tgt Ion:109 Resp: 119241
 Ion Ratio Lower Upper
 109 100
 139 86.8 74.3 111.5
 65 104.7 93.4 140.0

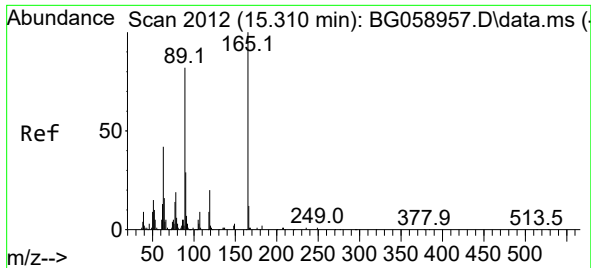


#56
 Dibenzofuran
 Concen: 40.748 ng/ul
 RT: 15.350 min Scan# 2019
 Delta R.T. 0.005 min
 Lab File: BG058958.D
 Acq: 10 Sep 2023 19:32



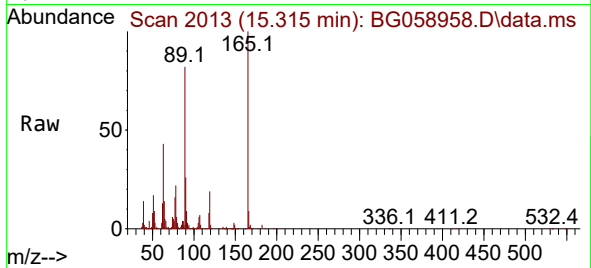
Tgt Ion:168 Resp: 736913
 Ion Ratio Lower Upper
 168 100
 139 35.0 27.4 41.2



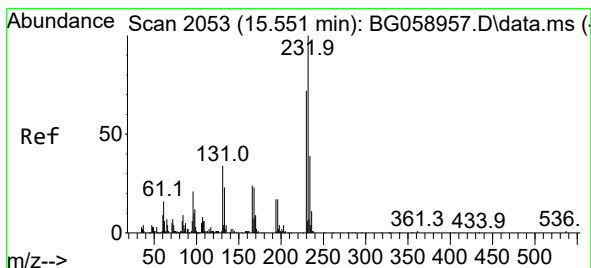
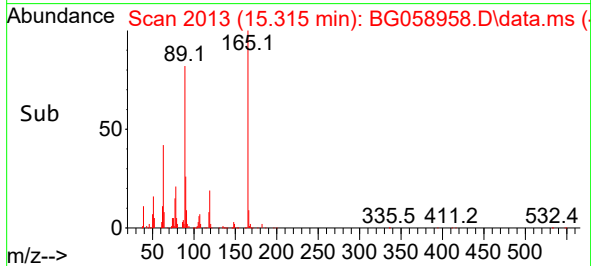
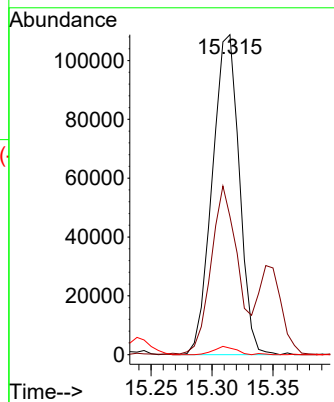


#57
 2,4-Dinitrotoluene
 Concen: 52.210 ng/ul
 RT: 15.315 min Scan# 2012
 Delta R.T. 0.005 min
 Lab File: BG058958.D
 Acq: 10 Sep 2023 19:32

Instrument : BNA_G
 ClientSampleId : SSTD040410

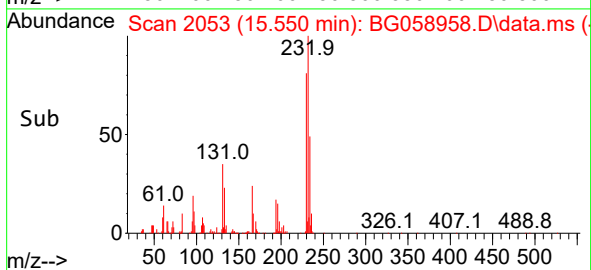
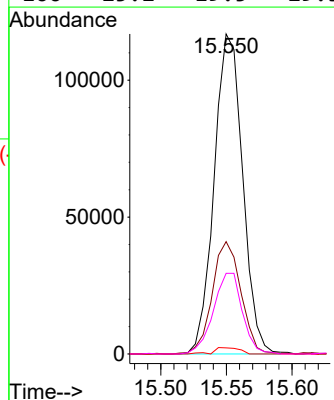
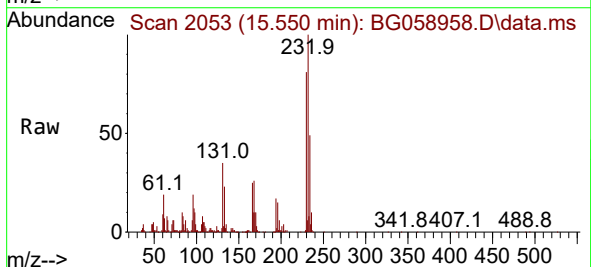


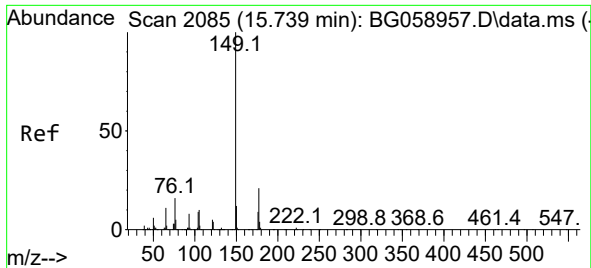
Tgt Ion:165 Resp: 167660
 Ion Ratio Lower Upper
 165 100
 63 43.2 33.3 49.9
 182 2.1 1.4 2.0#



#58
 2,3,4,6-Tetrachlorophenol
 Concen: 35.953 ng/ul
 RT: 15.550 min Scan# 2053
 Delta R.T. -0.001 min
 Lab File: BG058958.D
 Acq: 10 Sep 2023 19:32

Tgt Ion:232 Resp: 176470
 Ion Ratio Lower Upper
 232 100
 131 35.1 27.1 40.7
 130 1.9 0.7 1.1#
 166 25.2 19.5 29.3



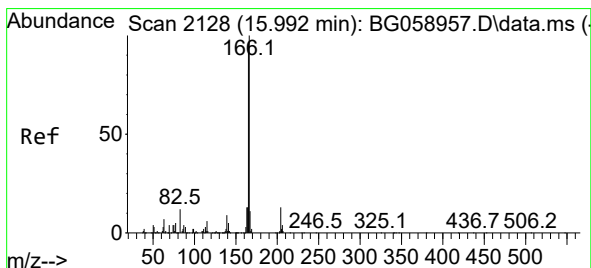
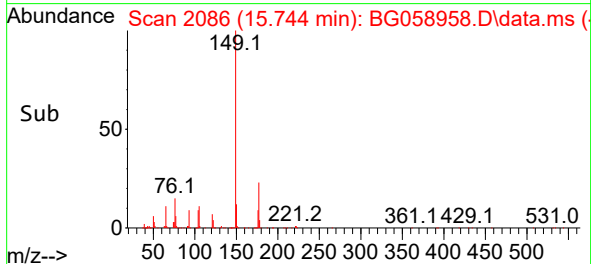
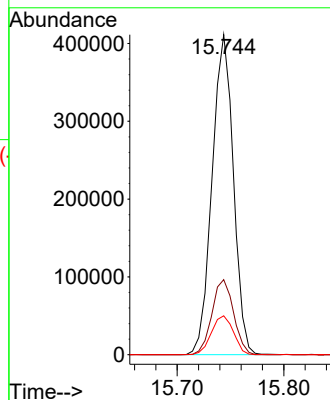
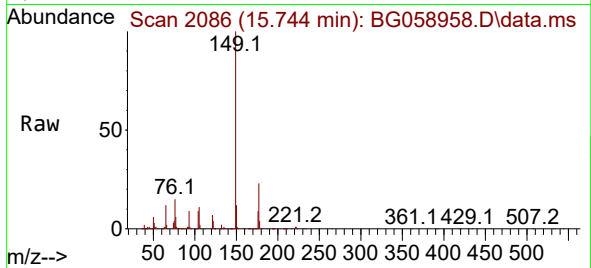


#59
 Diethylphthalate
 Concen: 40.462 ng/ul
 RT: 15.744 min Scan# 2086
 Delta R.T. 0.005 min
 Lab File: BG058958.D
 Acq: 10 Sep 2023 19:32

Instrument : BNA_G
 ClientSampleId : SSTD040410

Tgt Ion:149 Resp: 570351

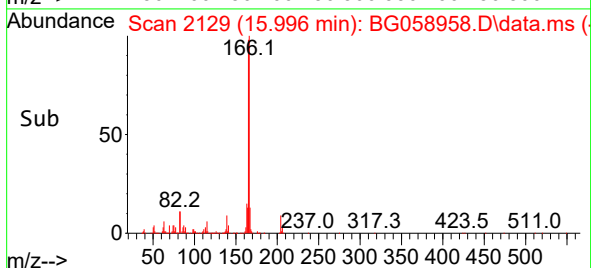
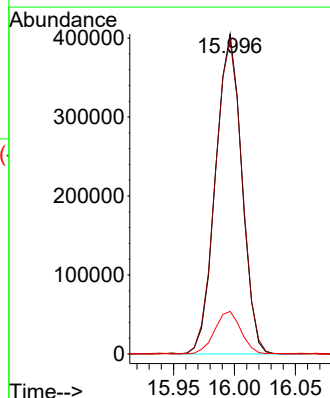
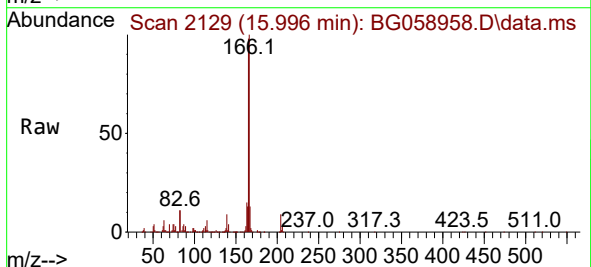
Ion	Ratio	Lower	Upper
149	100		
177	23.4	16.9	25.3
150	12.1	9.7	14.5

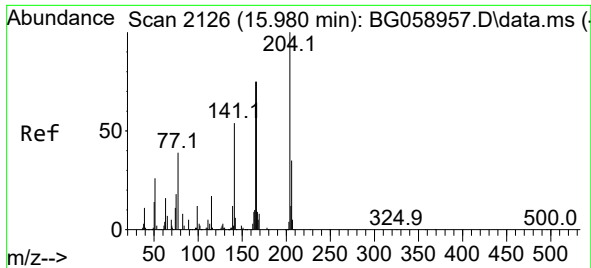


#61
 Fluorene
 Concen: 39.450 ng/ul
 RT: 15.996 min Scan# 2129
 Delta R.T. 0.005 min
 Lab File: BG058958.D
 Acq: 10 Sep 2023 19:32

Tgt Ion:166 Resp: 605699

Ion	Ratio	Lower	Upper
166	100		
165	98.3	76.4	114.6
167	13.3	9.3	13.9

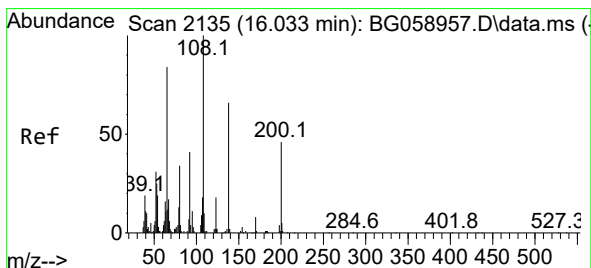
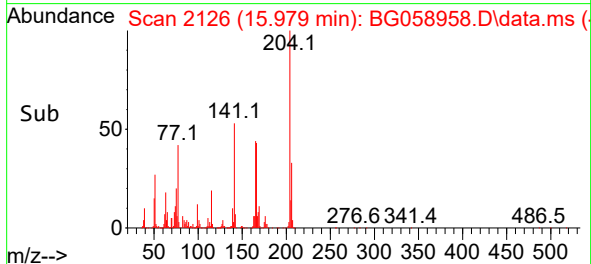
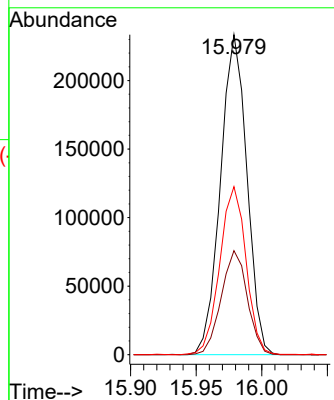
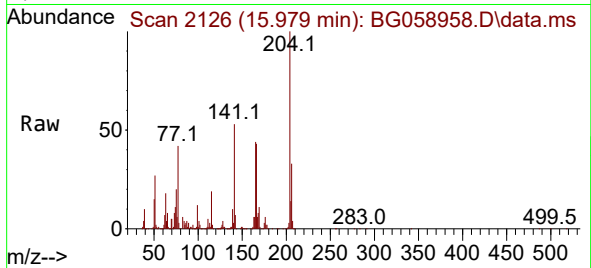




#62
 4-Chlorophenyl-phenylether
 Concen: 35.460 ng/ul
 RT: 15.979 min Scan# 2126
 Delta R.T. -0.001 min
 Lab File: BG058958.D
 Acq: 10 Sep 2023 19:32

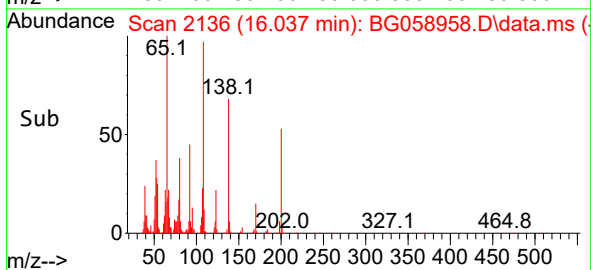
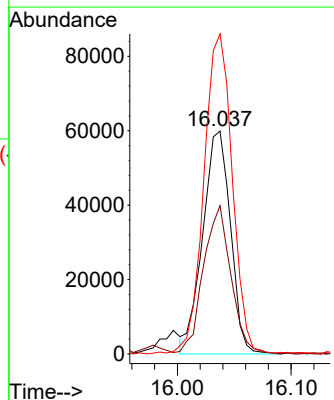
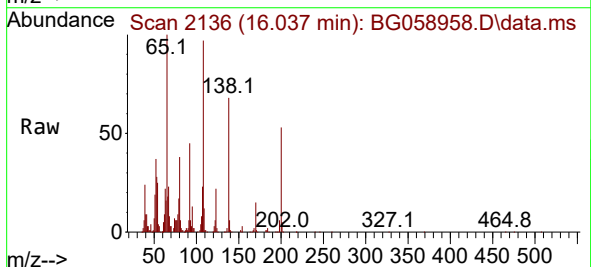
Instrument :
 BNA_G
 ClientSampleId :
 SSTD040410

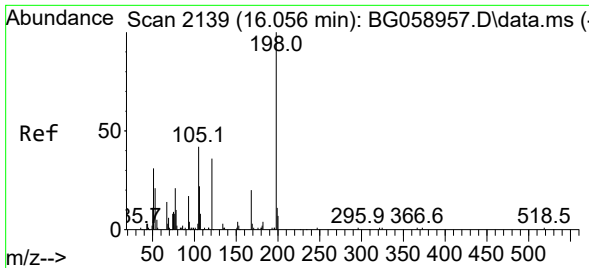
Tgt Ion:204 Resp: 326609
 Ion Ratio Lower Upper
 204 100
 206 32.5 27.7 41.5
 141 52.5 43.2 64.8



#63
 4-Nitroaniline
 Concen: 48.755 ng/ul
 RT: 16.037 min Scan# 2136
 Delta R.T. 0.005 min
 Lab File: BG058958.D
 Acq: 10 Sep 2023 19:32

Tgt Ion:138 Resp: 101760
 Ion Ratio Lower Upper
 138 100
 92 66.6 49.9 74.9
 108 143.6 121.4 182.2



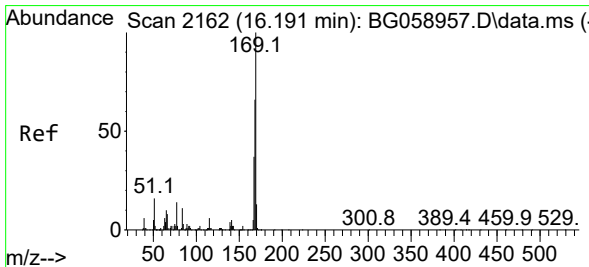
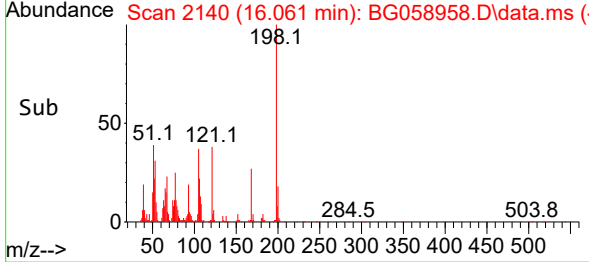
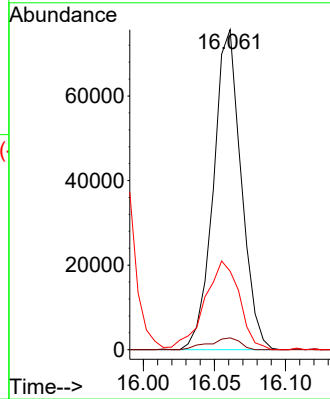
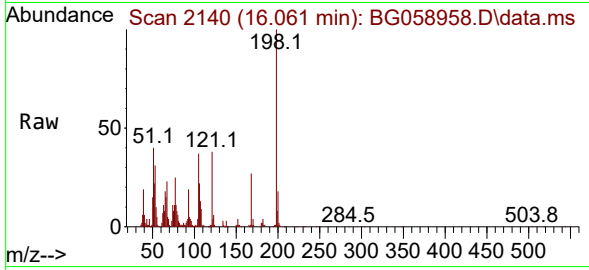


#66
 4,6-Dinitro-2-methylphenol
 Concen: 48.026 ng/ul
 RT: 16.061 min Scan# 2139
 Delta R.T. 0.005 min
 Lab File: BG058958.D
 Acq: 10 Sep 2023 19:32

Instrument :
 BNA_G
 ClientSampleId :
 SSTD040410

Tgt Ion:198 Resp: 102606

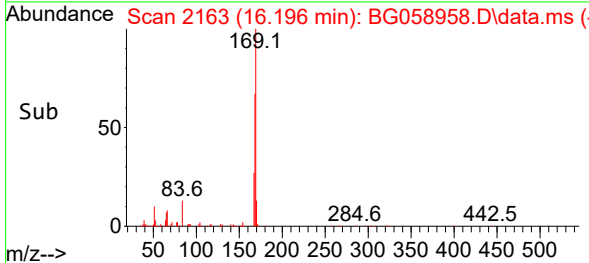
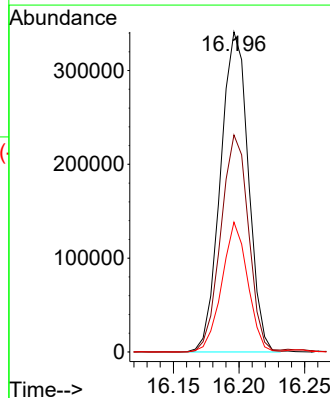
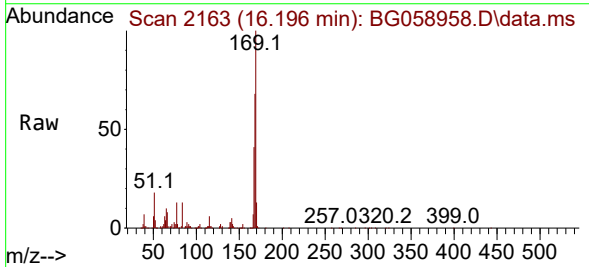
Ion	Ratio	Lower	Upper
198	100		
182	3.7	3.0	4.6
77	24.6	20.0	30.0

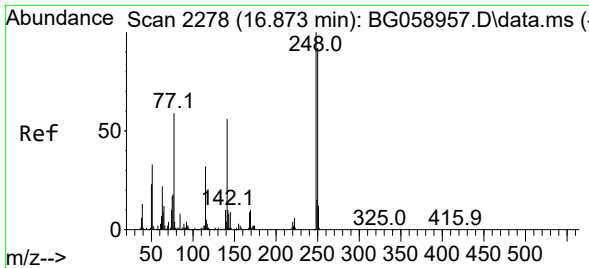


#67
 N-Nitrosodiphenylamine
 Concen: 45.749 ng/ul
 RT: 16.196 min Scan# 2163
 Delta R.T. 0.005 min
 Lab File: BG058958.D
 Acq: 10 Sep 2023 19:32

Tgt Ion:169 Resp: 502912

Ion	Ratio	Lower	Upper
169	100		
168	67.8	53.0	79.6
167	40.5	29.8	44.6

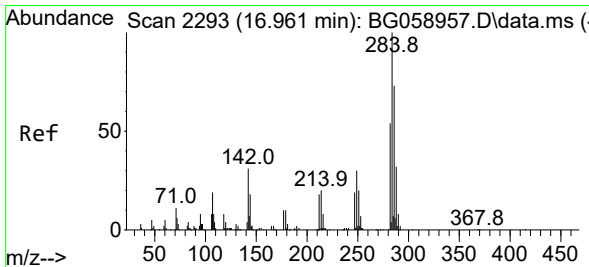
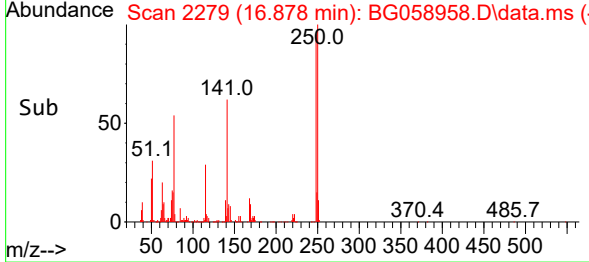
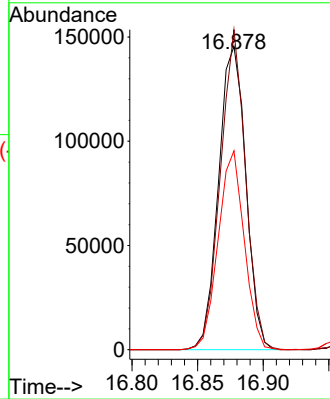
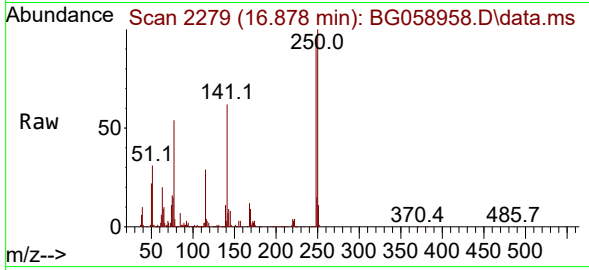




#68
 4-Bromophenyl-phenylether
 Concen: 38.738 ng/ul
 RT: 16.878 min Scan# 21
 Delta R.T. 0.005 min
 Lab File: BG058958.D
 Acq: 10 Sep 2023 19:32

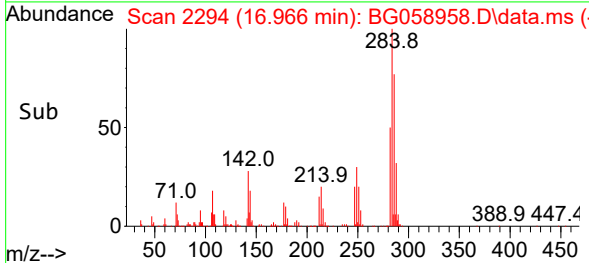
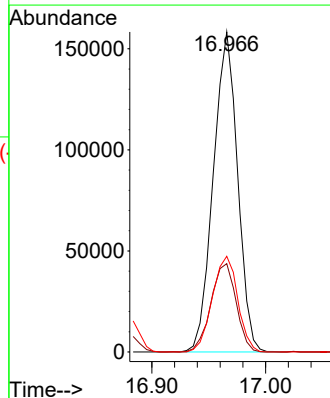
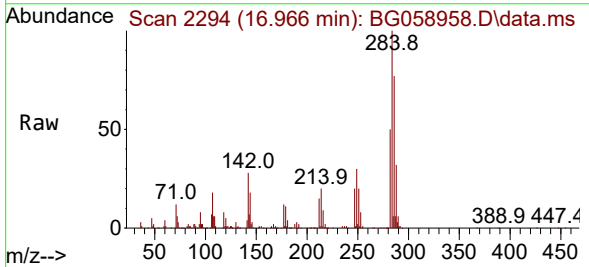
Instrument :
 BNA_G
 ClientSampleId :
 SST040410

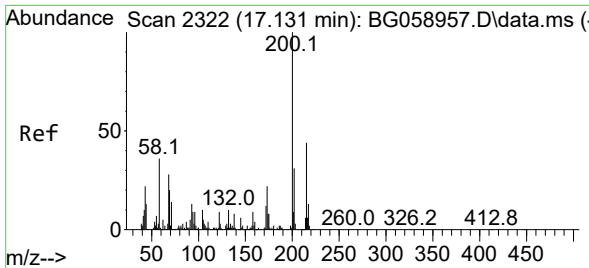
Tgt Ion:248 Resp: 210267
 Ion Ratio Lower Upper
 248 100
 250 105.5 73.9 110.9
 141 65.6 45.4 68.0



#69
 Hexachlorobenzene
 Concen: 37.507 ng/ul
 RT: 16.966 min Scan# 2294
 Delta R.T. 0.005 min
 Lab File: BG058958.D
 Acq: 10 Sep 2023 19:32

Tgt Ion:284 Resp: 234921
 Ion Ratio Lower Upper
 284 100
 142 27.6 24.6 37.0
 249 29.9 24.3 36.5

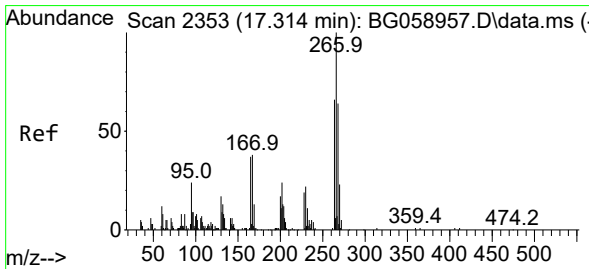
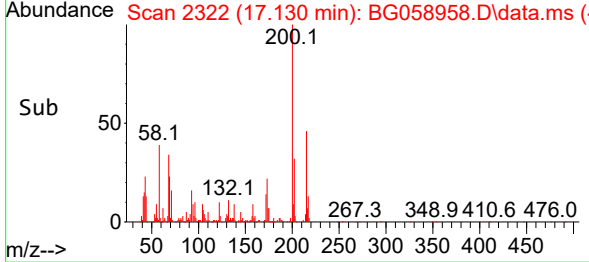
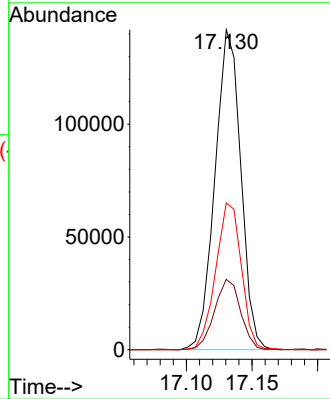
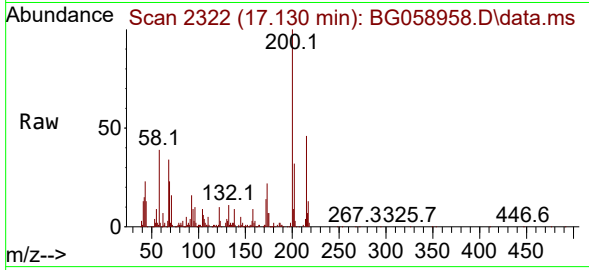




#70
 Atrazine
 Concen: 43.971 ng/uI
 RT: 17.130 min Scan# 21
 Delta R.T. -0.001 min
 Lab File: BG058958.D
 Acq: 10 Sep 2023 19:32

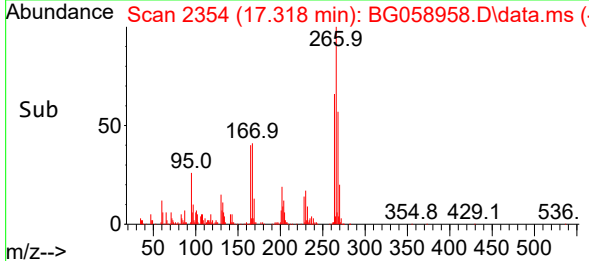
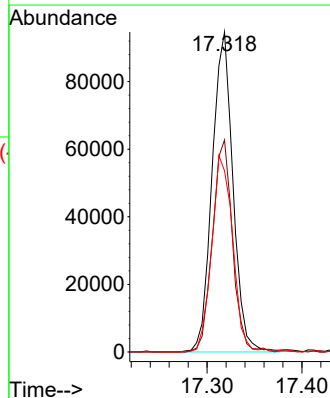
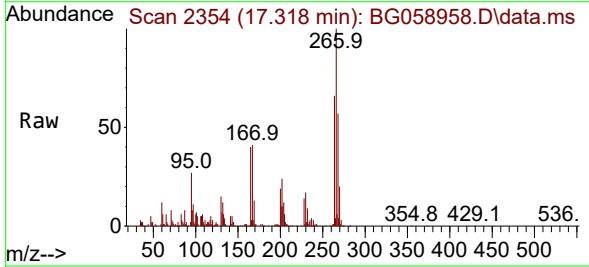
Instrument :
 BNA_G
 ClientSampleId :
 SSTD040410

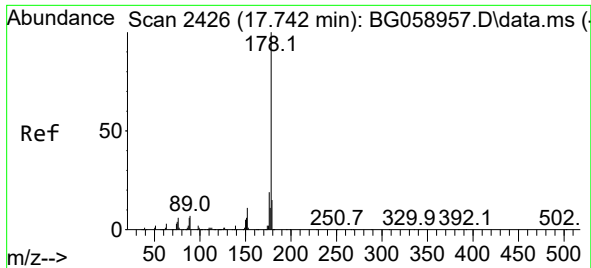
Tgt Ion	Resp	Lower	Upper
200	194062		
200	100		
173	22.0	17.4	26.2
215	45.8	35.4	53.0



#71
 Pentachlorophenol
 Concen: 37.508 ng/uI
 RT: 17.318 min Scan# 2354
 Delta R.T. 0.005 min
 Lab File: BG058958.D
 Acq: 10 Sep 2023 19:32

Tgt Ion	Resp	Lower	Upper
266	144285		
266	100		
264	66.3	53.1	79.7
268	56.6	51.6	77.4



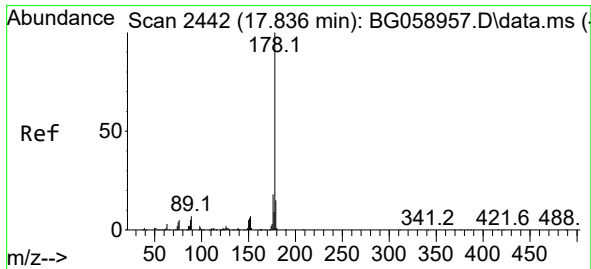
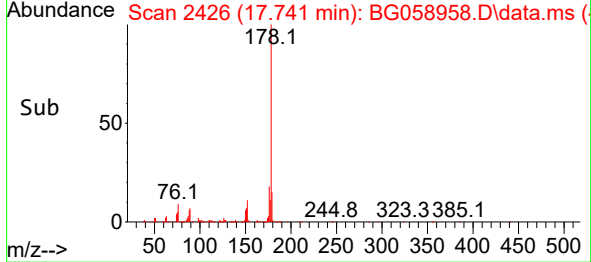
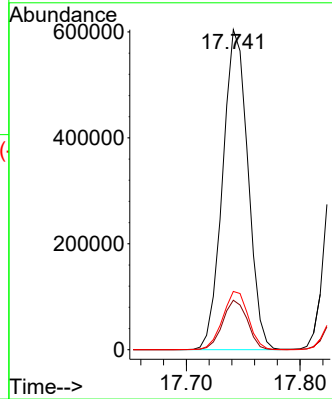
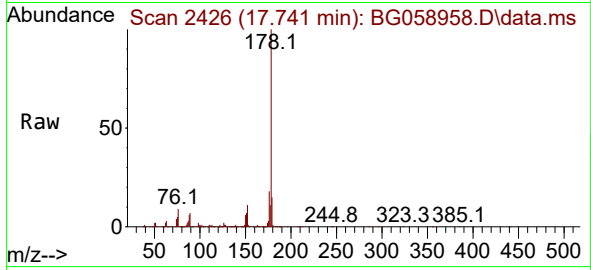


#72
 Phenanthrene
 Concen: 43.002 ng/u1
 RT: 17.741 min Scan# 2426
 Delta R.T. -0.001 min
 Lab File: BG058958.D
 Acq: 10 Sep 2023 19:32

Instrument : BNA_G
 ClientSampleId : SSTD040410

Tgt Ion:178 Resp: 933171

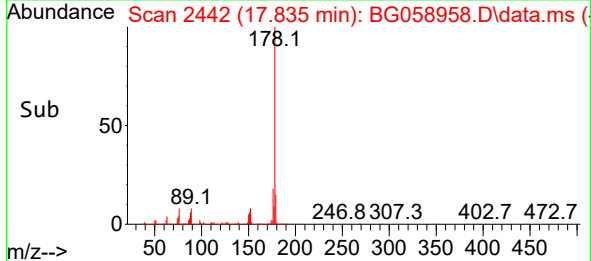
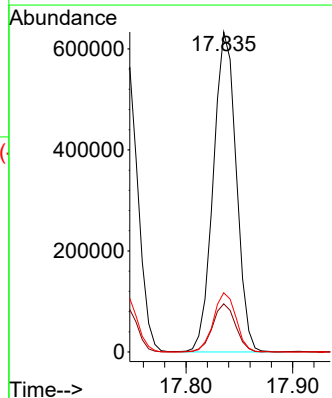
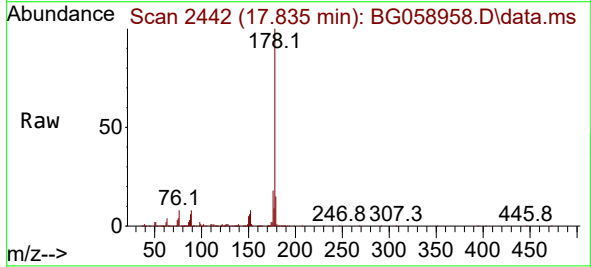
Ion	Ratio	Lower	Upper
178	100		
179	15.5	11.8	17.8
176	18.2	15.1	22.7

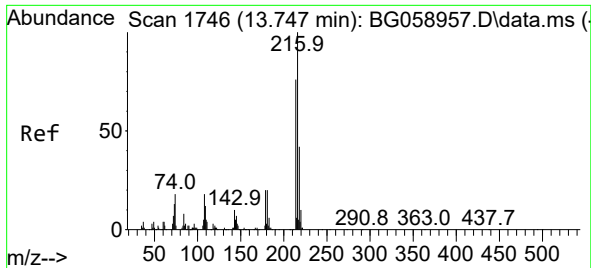


#74
 Anthracene
 Concen: 42.746 ng/u1
 RT: 17.835 min Scan# 2442
 Delta R.T. -0.001 min
 Lab File: BG058958.D
 Acq: 10 Sep 2023 19:32

Tgt Ion:178 Resp: 947063

Ion	Ratio	Lower	Upper
178	100		
179	15.1	12.2	18.4
176	18.5	14.4	21.6





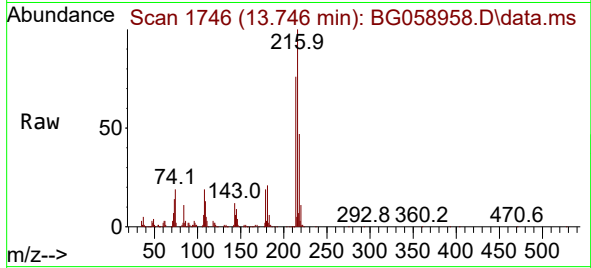
#75
 1,2,3,4-Tetrachlorobenzene
 Concen: 45.513 ng/uL
 RT: 13.746 min Scan# 11
 Delta R.T. -0.001 min
 Lab File: BG058958.D
 Acq: 10 Sep 2023 19:32

Instrument :

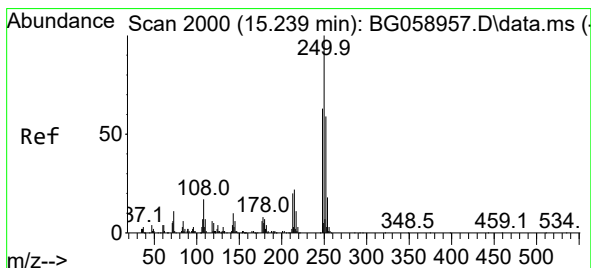
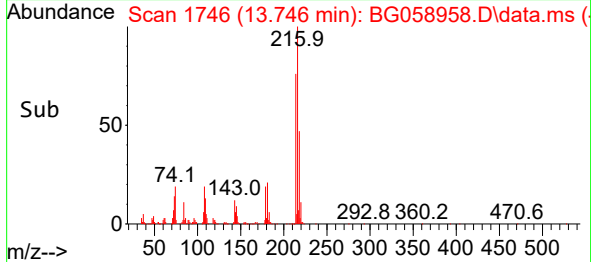
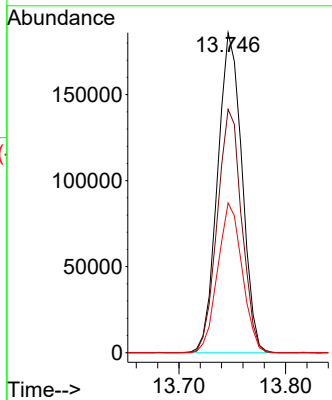
BNA_G

ClientSampleId :

SSTD040410

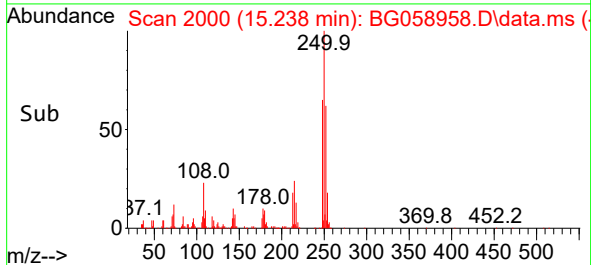
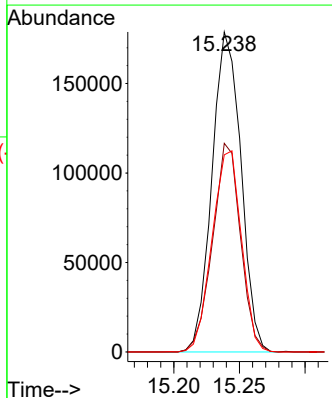
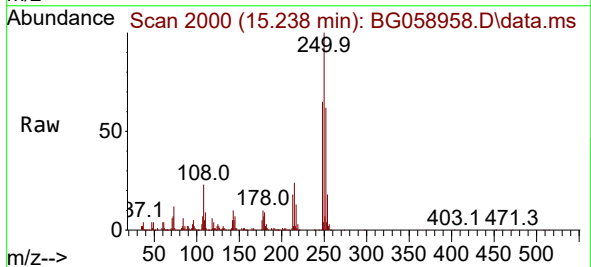


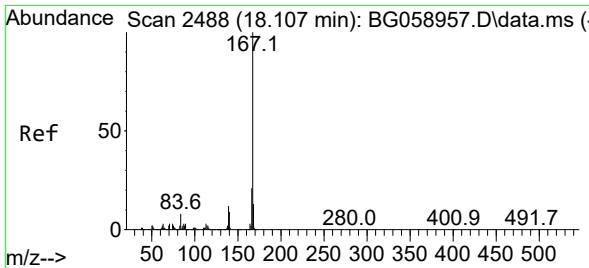
Tgt Ion:216 Resp: 295417
 Ion Ratio Lower Upper
 216 100
 214 76.0 60.6 91.0
 218 46.8 33.6 50.4



#76
 Pentachlorobenzene
 Concen: 41.946 ng/uL
 RT: 15.238 min Scan# 2000
 Delta R.T. -0.001 min
 Lab File: BG058958.D
 Acq: 10 Sep 2023 19:32

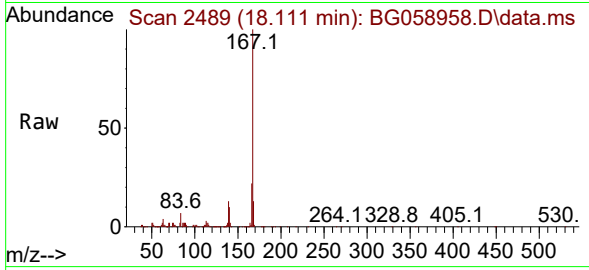
Tgt Ion:250 Resp: 274401
 Ion Ratio Lower Upper
 250 100
 248 65.2 50.3 75.5
 252 61.6 47.6 71.4





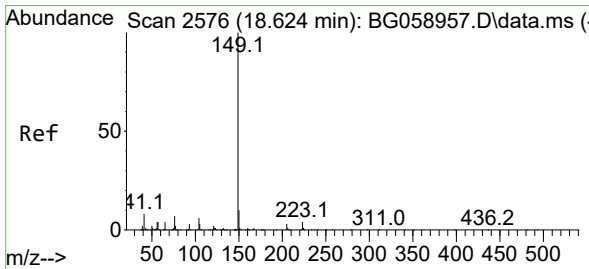
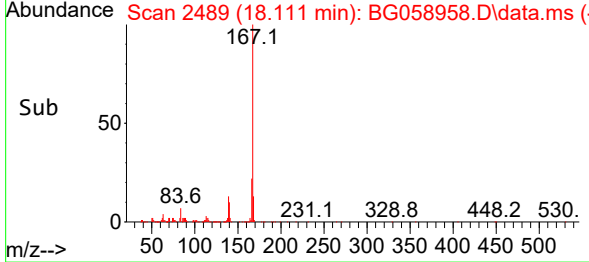
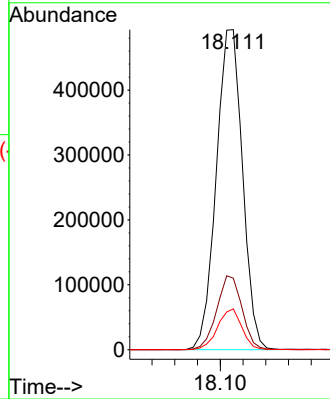
#77
 Carbazole
 Concen: 47.014 ng/uI
 RT: 18.111 min Scan# 2489
 Delta R.T. 0.005 min
 Lab File: BG058958.D
 Acq: 10 Sep 2023 19:32

Instrument : BNA_G
 ClientSampleId : SSTD040410



Tgt Ion:167 Resp: 790619

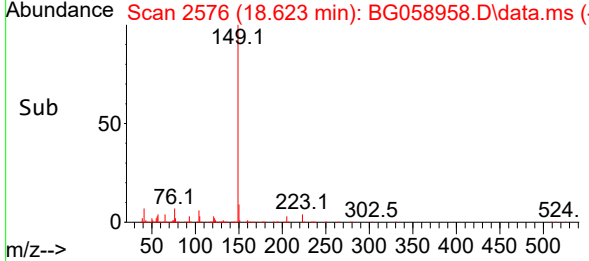
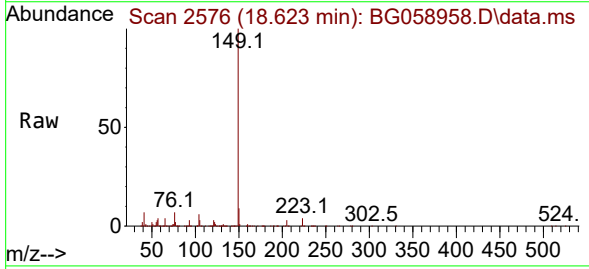
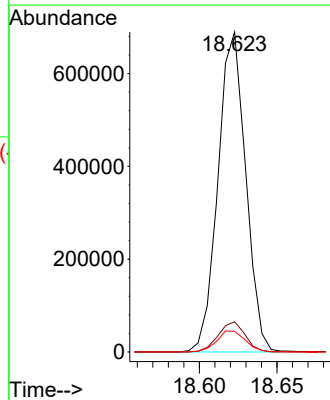
Ion	Ratio	Lower	Upper
167	100		
166	22.3	16.8	25.2
139	12.8	9.4	14.2

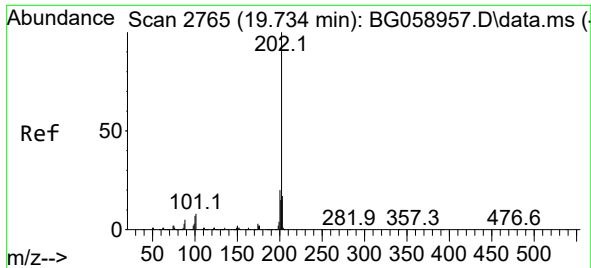


#78
 Di-n-butylphthalate
 Concen: 56.742 ng/uI
 RT: 18.623 min Scan# 2576
 Delta R.T. -0.001 min
 Lab File: BG058958.D
 Acq: 10 Sep 2023 19:32

Tgt Ion:149 Resp: 857799

Ion	Ratio	Lower	Upper
149	100		
150	9.4	7.7	11.5
104	6.5	4.6	6.8



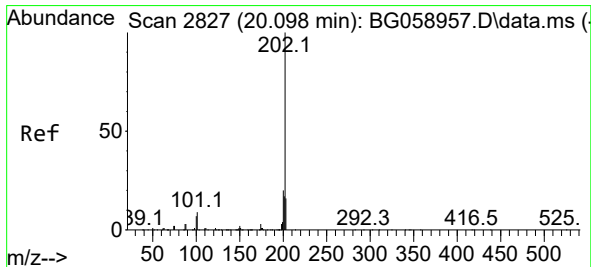
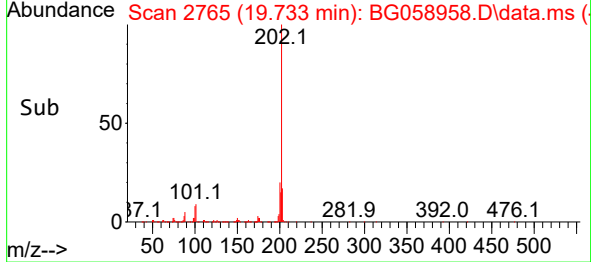
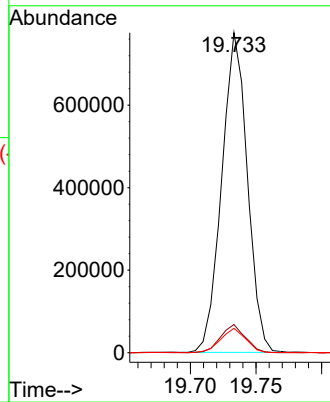
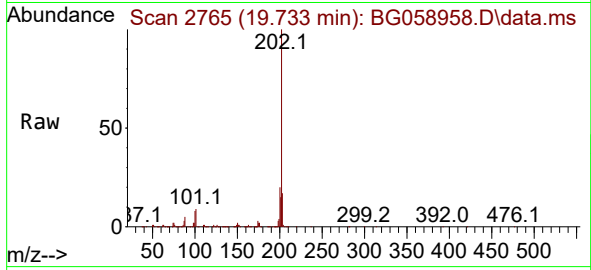


#80
 Fluoranthene
 Concen: 36.258 ng/u1
 RT: 19.733 min Scan# 21
 Delta R.T. -0.001 min
 Lab File: BG058958.D
 Acq: 10 Sep 2023 19:32

Instrument :
 BNA_G
 ClientSampleId :
 SSTD040410

Tgt Ion:202 Resp: 1052245

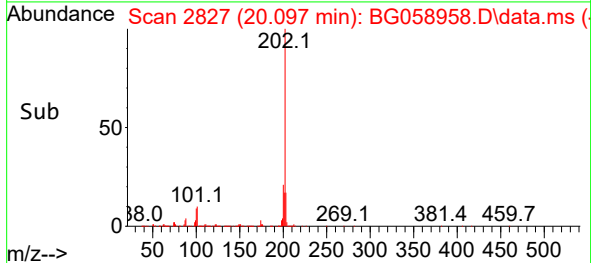
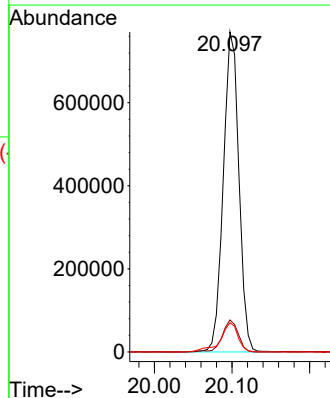
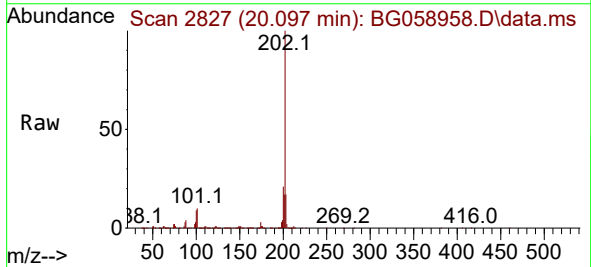
Ion	Ratio	Lower	Upper
202	100		
101	8.8	6.1	9.1
100	7.6	5.9	8.9

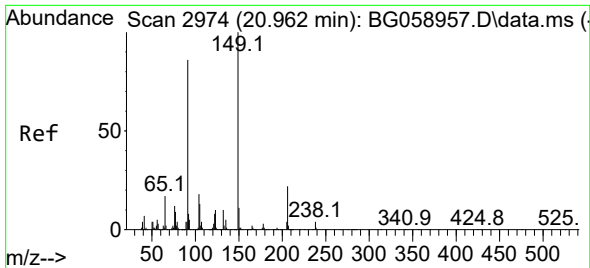


#82
 Pyrene
 Concen: 37.076 ng/u1
 RT: 20.097 min Scan# 2827
 Delta R.T. -0.001 min
 Lab File: BG058958.D
 Acq: 10 Sep 2023 19:32

Tgt Ion:202 Resp: 1077760

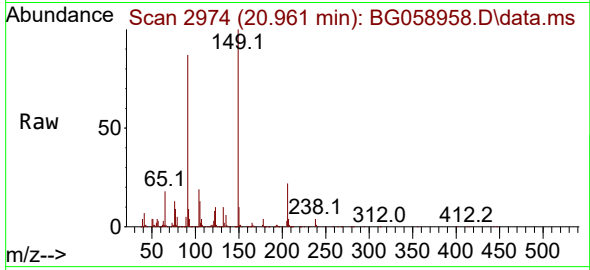
Ion	Ratio	Lower	Upper
202	100		
101	10.0	7.5	11.3
100	9.2	6.3	9.5



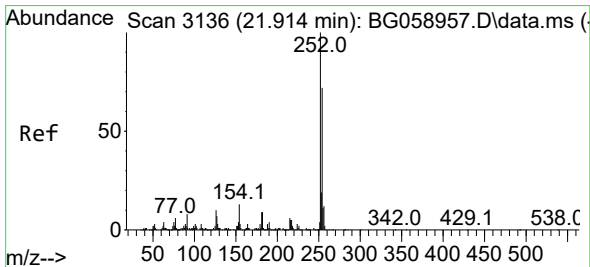
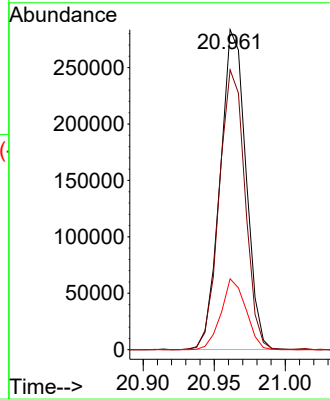
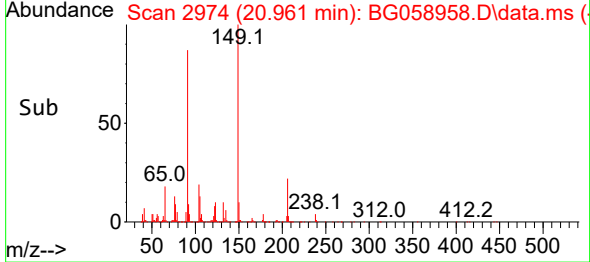


#83
 Butylbenzylphthalate
 Concen: 70.866 ng/ul
 RT: 20.961 min Scan# 2974
 Delta R.T. -0.001 min
 Lab File: BG058958.D
 Acq: 10 Sep 2023 19:32

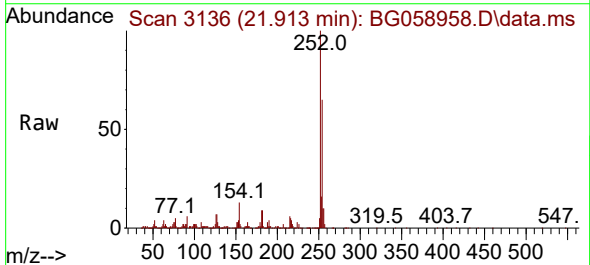
Instrument :
 BNA_G
 ClientSampleId :
 SSTD040410



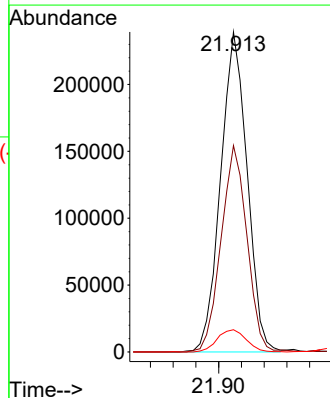
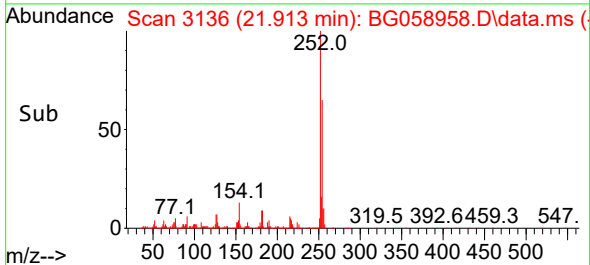
Tgt Ion:149 Resp: 357182
 Ion Ratio Lower Upper
 149 100
 91 87.5 68.7 103.1
 206 22.2 17.3 25.9

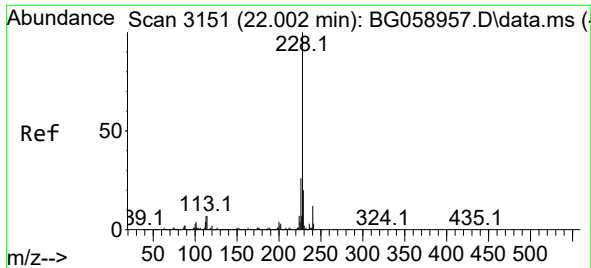


#84
 3,3'-Dichlorobenzidine
 Concen: 43.069 ng/ul
 RT: 21.913 min Scan# 3136
 Delta R.T. -0.001 min
 Lab File: BG058958.D
 Acq: 10 Sep 2023 19:32



Tgt Ion:252 Resp: 387343
 Ion Ratio Lower Upper
 252 100
 254 64.5 57.6 86.4
 126 7.0 7.8 11.8#

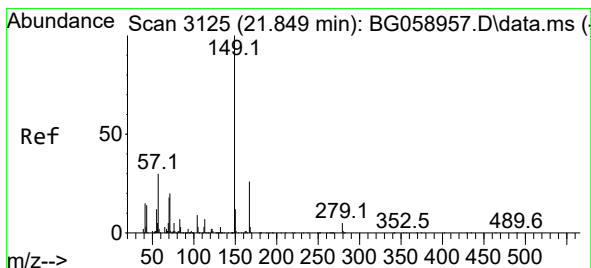
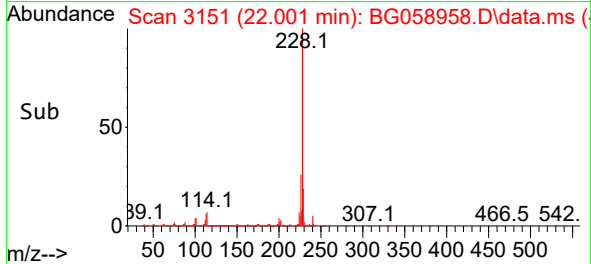
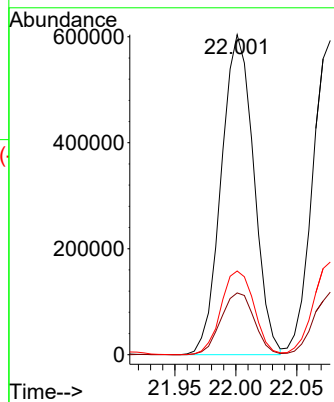
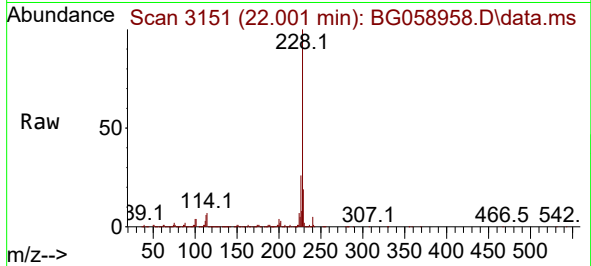




#85
 Benzo(a)anthracene
 Concen: 39.958 ng/ul
 RT: 22.001 min Scan# 3151
 Delta R.T. -0.001 min
 Lab File: BG058958.D
 Acq: 10 Sep 2023 19:32

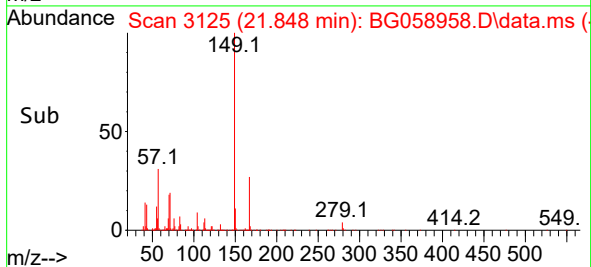
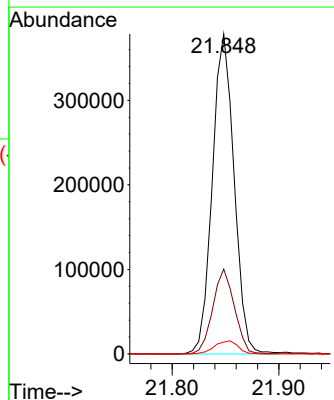
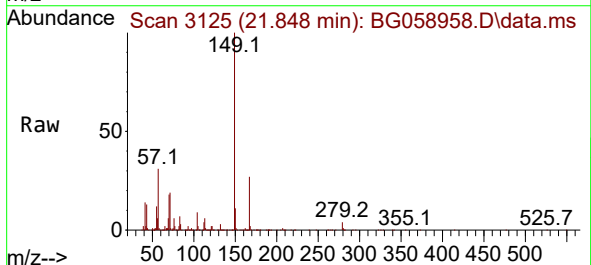
Instrument :
 BNA_G
 ClientSampleId :
 SSTD040410

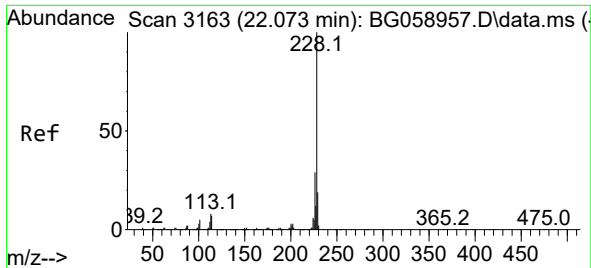
Tgt Ion:228 Resp: 1120148
 Ion Ratio Lower Upper
 228 100
 229 19.3 16.0 24.0
 226 26.2 20.8 31.2



#86
 Bis(2-ethylhexyl)phthalate
 Concen: 68.295 ng/ul
 RT: 21.848 min Scan# 3125
 Delta R.T. -0.001 min
 Lab File: BG058958.D
 Acq: 10 Sep 2023 19:32

Tgt Ion:149 Resp: 536972
 Ion Ratio Lower Upper
 149 100
 167 26.6 21.0 31.6
 279 3.7 3.8 5.8#

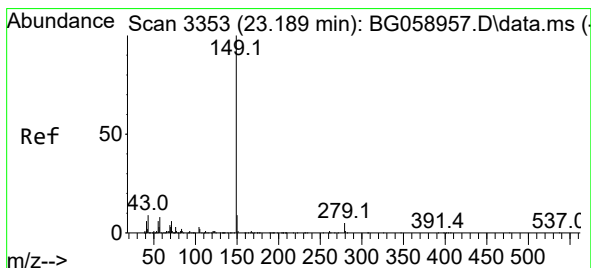
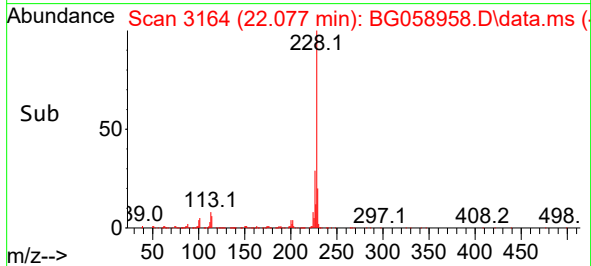
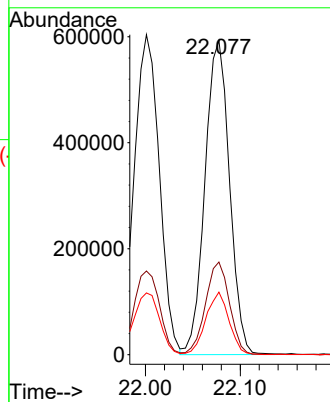
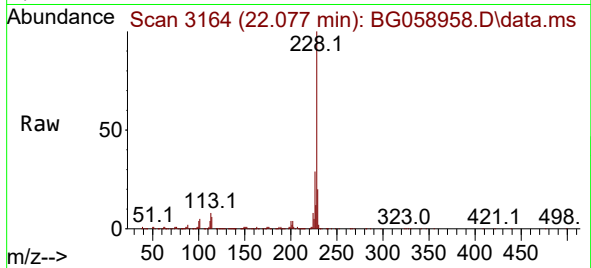




#87
 Chrysene
 Concen: 40.631 ng/u1
 RT: 22.077 min Scan# 3163
 Delta R.T. 0.005 min
 Lab File: BG058958.D
 Acq: 10 Sep 2023 19:32

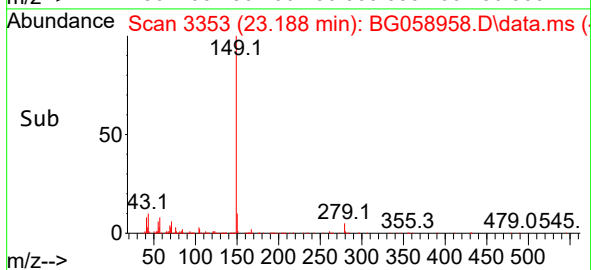
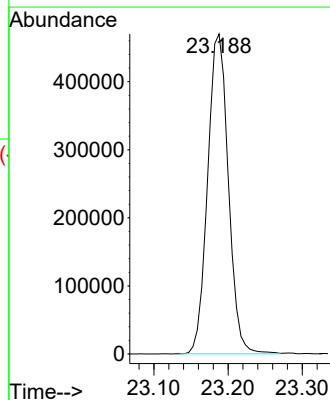
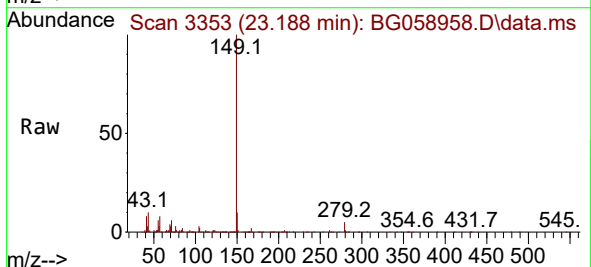
Instrument : BNA_G
 ClientSampleId : SSTD040410

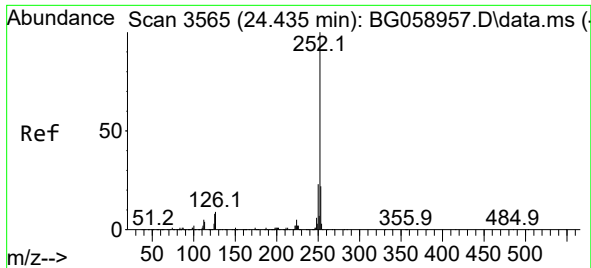
Tgt Ion:228 Resp: 1066964
 Ion Ratio Lower Upper
 228 100
 226 29.5 23.2 34.8
 229 19.9 15.3 22.9



#89
 Di-n-octyl phthalate
 Concen: 62.806 ng/u1
 RT: 23.188 min Scan# 3353
 Delta R.T. -0.001 min
 Lab File: BG058958.D
 Acq: 10 Sep 2023 19:32

Tgt Ion:149 Resp: 911153



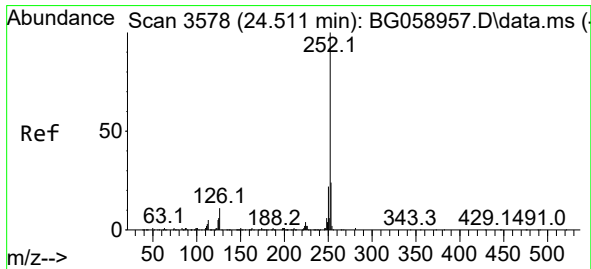
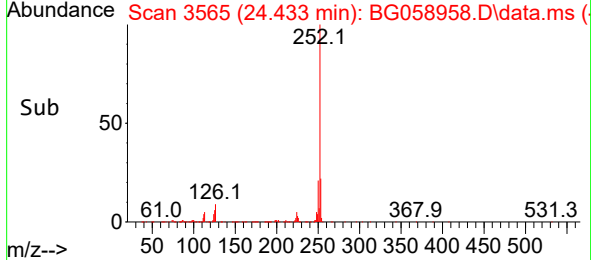
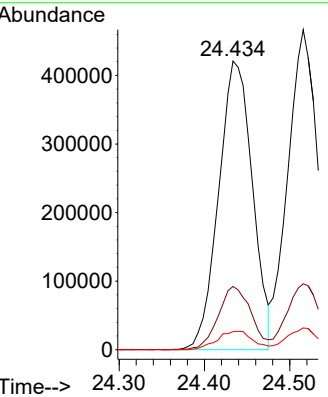
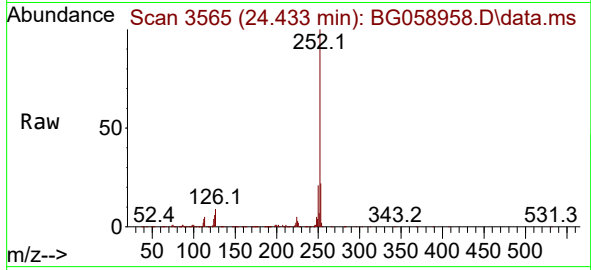


#90
 Benzo(b)fluoranthene
 Concen: 41.410 ng/ul
 RT: 24.433 min Scan# 3565
 Delta R.T. -0.001 min
 Lab File: BG058958.D
 Acq: 10 Sep 2023 19:32

Instrument : BNA_G
 ClientSampleId : SSTD040410

Tgt Ion:252 Resp: 1158471

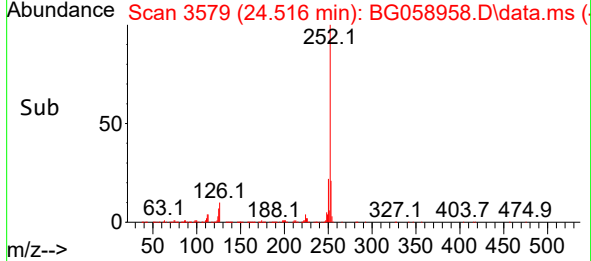
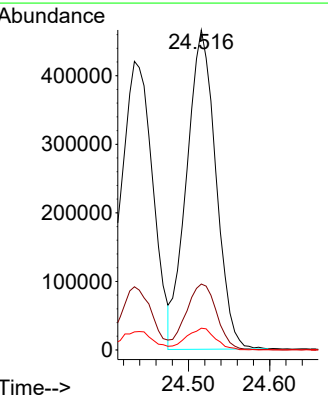
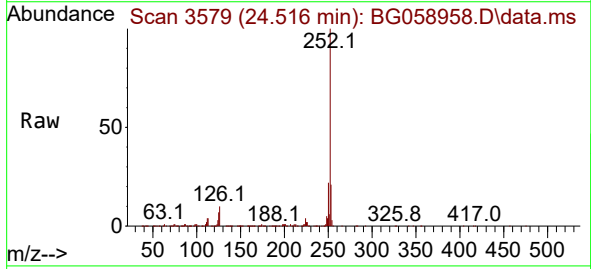
Ion	Ratio	Lower	Upper
252	100		
253	21.9	17.8	26.8
125	6.3	6.2	9.2

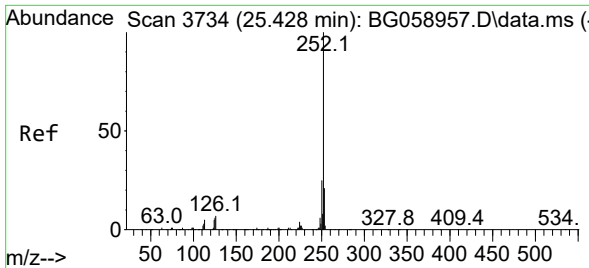


#91
 Benzo(k)fluoranthene
 Concen: 41.340 ng/ul
 RT: 24.516 min Scan# 3579
 Delta R.T. 0.005 min
 Lab File: BG058958.D
 Acq: 10 Sep 2023 19:32

Tgt Ion:252 Resp: 1163690

Ion	Ratio	Lower	Upper
252	100		
253	20.6	19.1	28.7
125	6.8	5.0	7.4



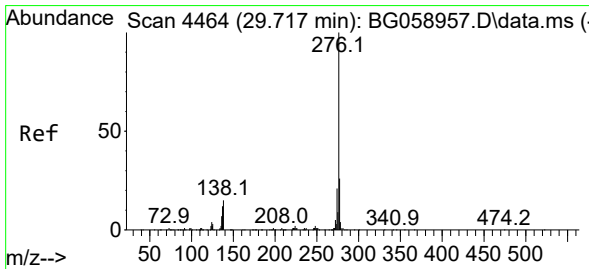
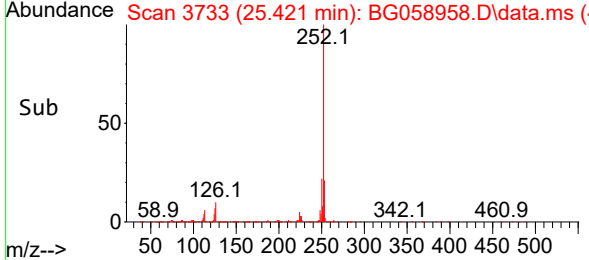
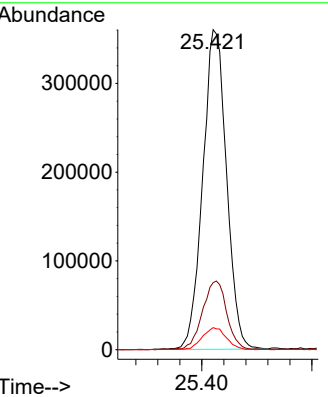
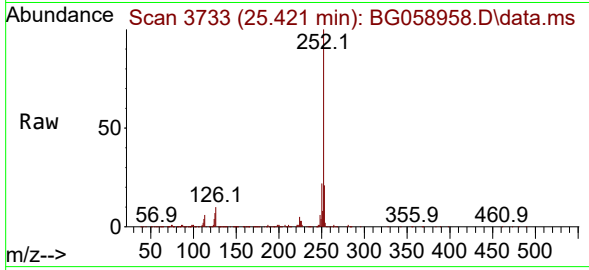


#93
 Benzo(a)pyrene
 Concen: 41.197 ng/ul
 RT: 25.421 min Scan# 31
 Delta R.T. -0.007 min
 Lab File: BG058958.D
 Acq: 10 Sep 2023 19:32

Instrument : BNA_G
 ClientSampleId : SSTD040410

Tgt Ion:252 Resp: 1078376

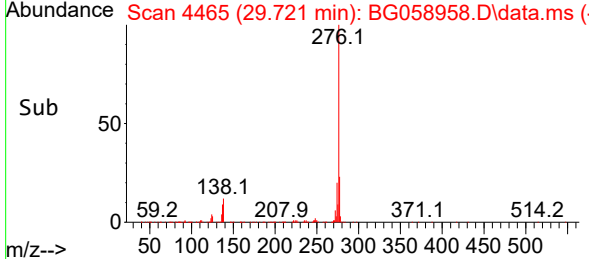
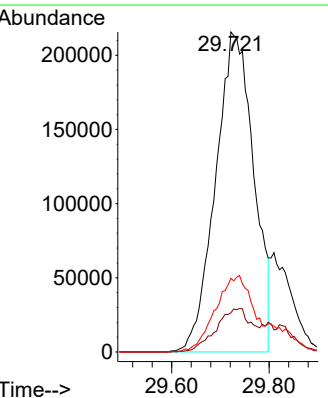
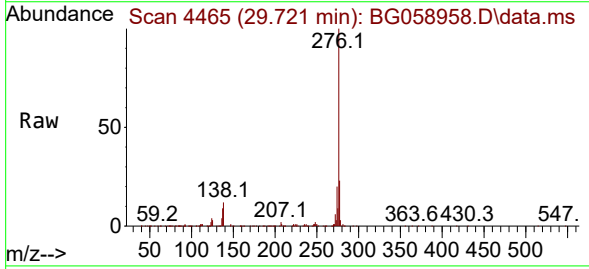
Ion	Ratio	Lower	Upper
252	100		
253	21.0	17.1	25.7
125	6.9	5.3	7.9

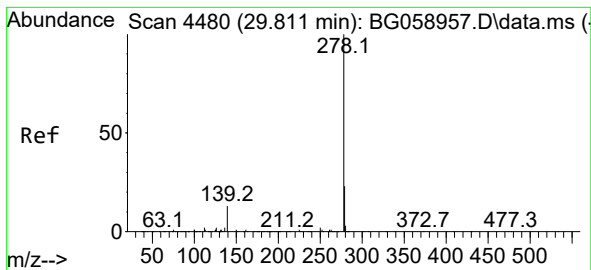


#94
 Indeno(1,2,3-cd)pyrene
 Concen: 35.908 ng/ul
 RT: 29.721 min Scan# 4465
 Delta R.T. 0.005 min
 Lab File: BG058958.D
 Acq: 10 Sep 2023 19:32

Tgt Ion:276 Resp: 1171818

Ion	Ratio	Lower	Upper
276	100		
138	12.3	11.8	17.8
277	23.0	20.7	31.1



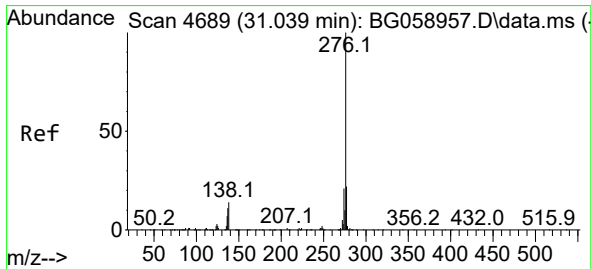
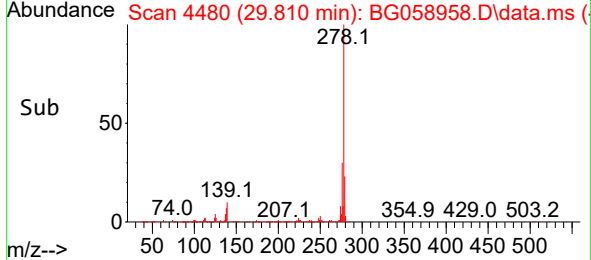
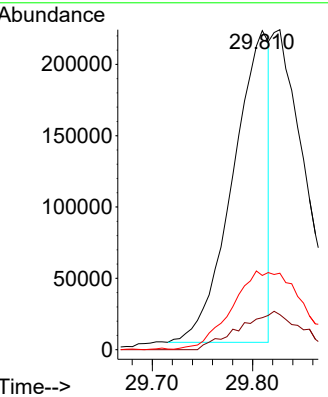
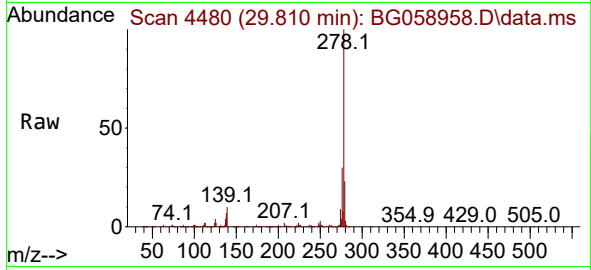


#95
 Dibenzo(a,h)anthracene
 Concen: 20.686 ng/ul
 RT: 29.810 min Scan# 4480
 Delta R.T. -0.001 min
 Lab File: BG058958.D
 Acq: 10 Sep 2023 19:32

Instrument : BNA_G
 ClientSampleId : SSTD040410

Tgt Ion: 278 Resp: 548962

Ion	Ratio	Lower	Upper
278	100		
139	10.0	9.8	14.8
279	23.3	18.5	27.7



#96
 Benzo(g,h,i)perylene
 Concen: 23.635 ng/ul
 RT: 31.038 min Scan# 4689
 Delta R.T. -0.001 min
 Lab File: BG058958.D
 Acq: 10 Sep 2023 19:32

Tgt Ion: 276 Resp: 612377

Ion	Ratio	Lower	Upper
276	100		
138	14.5	11.4	17.2
277	22.7	17.4	26.2

