

Data Path : Z:\svoasrv\HPCHEM1\BNA_G\Data\BG091223\
 Data File : BG059017.D
 Acq On : 12 Sep 2023 19:20
 Operator : MA/JU
 Sample : 04175-22
 Misc :
 ALS Vial : 8 Sample Multiplier: 1

Instrument :
 BNA_G
 ClientSampleId :
 EZYW5

Quant Time: Sep 12 23:57:12 2023
 Quant Method : Z:\svoasrv\HPCHEM1\BNA_G\Methods\SFAM-EPA-BG091023.MA.M
 Quant Title : SVOA CALIBRATION
 QLast Update : Tue Sep 12 23:54:19 2023
 Response via : Initial Calibration

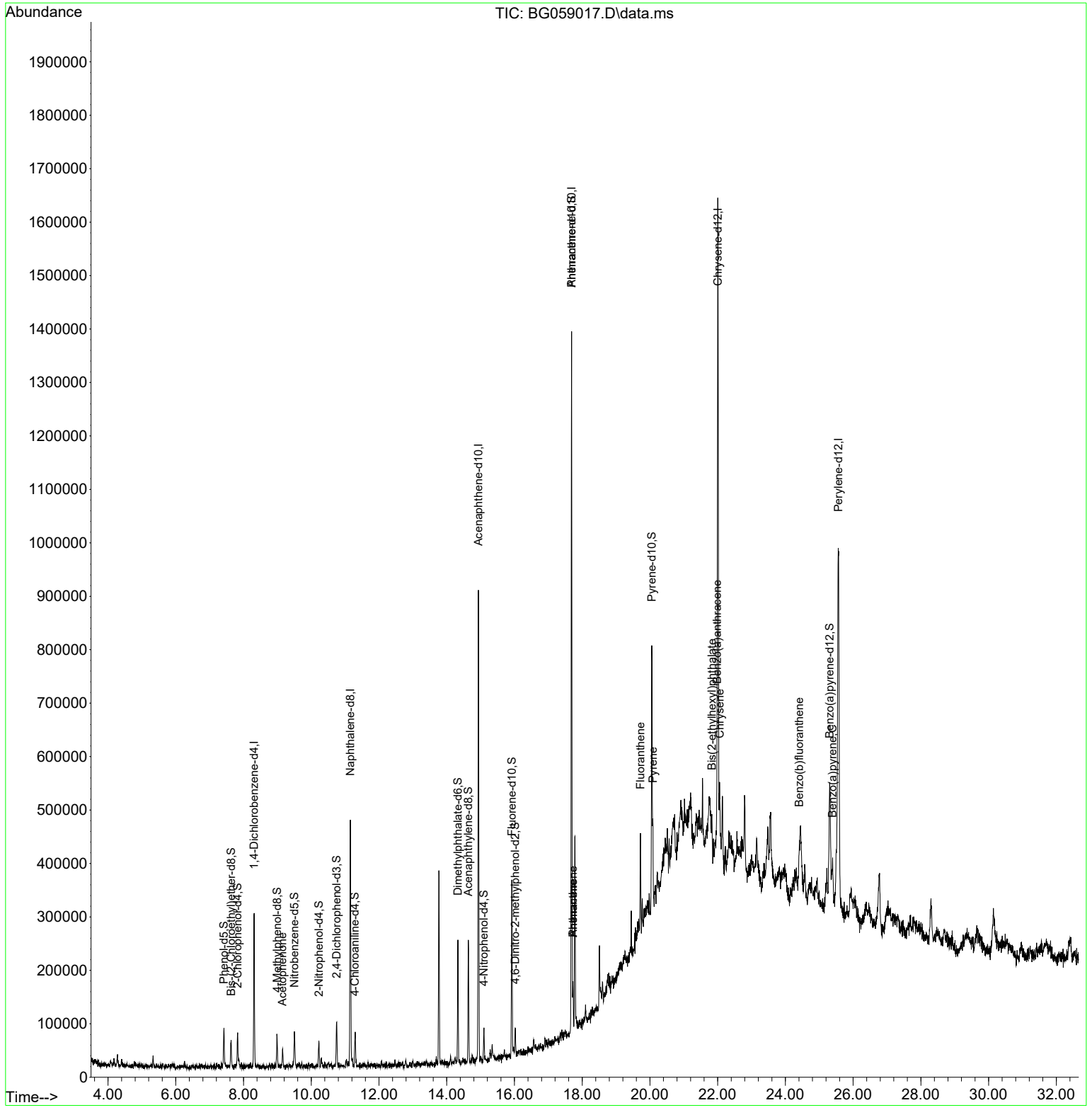
Compound	R.T.	QIon	Response	Conc	Units	Dev(Min)
Internal Standards						
1) 1,4-Dichlorobenzene-d4	8.315	152	74651	20.000	ng/ul	0.00
20) Naphthalene-d8	11.153	136	370645	20.000	ng/ul #	0.00
38) Acenaphthene-d10	14.937	164	295832	20.000	ng/ul	0.00
64) Phenanthrene-d10	17.686	188	842319	20.000	ng/ul #	0.00
79) Chrysene-d12	22.005	240	768228	20.000	ng/ul	0.00
88) Perylene-d12	25.565	264	862098	20.000	ng/ul	0.00
System Monitoring Compounds						
3) 1,4-Dioxane-d8	3.626	96	1352	0.770	ng/uL	0.00
4) Pyridine-d5	4.073	84	4998	0.899	ng/ul	0.02
7) Phenol-d5	7.422	99	42860	5.694	ng/ul	0.00
9) Bis-(2-Chloroethyl)eth...	7.633	67	24939	5.650	ng/ul	0.00
11) 2-Chlorophenol-d4	7.827	132	27187	5.631	ng/ul	0.00
15) 4-Methylphenol-d8	8.991	113	20486	3.522	ng/ul	0.00
21) Nitrobenzene-d5	9.502	128	14884	5.536	ng/ul	0.00
24) 2-Nitrophenol-d4	10.225	143	15341	5.200	ng/ul	0.00
28) 2,4-Dichlorophenol-d3	10.747	165	29410	4.691	ng/ul	0.00
31) 4-Chloroaniline-d4	11.288	131	31054	3.683	ng/ul	0.00
46) Dimethylphthalate-d6	14.331	166	142013	6.189	ng/ul	0.00
49) Acenaphthylene-d8	14.637	160	147529	5.773	ng/ul	0.00
54) 4-Nitrophenol-d4	15.095	143	12126	3.181	ng/ul	-0.01
60) Fluorene-d10	15.924	176	135167	6.637	ng/ul	0.00
65) 4,6-Dinitro-2-methylph...	16.024	200	12777	3.090	ng/ul	0.00
73) Anthracene-d10	17.686	188	842319	22.526	ng/ul	-0.10
81) Pyrene-d10	20.054	212	283234	6.960	ng/ul	0.00
92) Benzo(a)pyrene-d12	25.307	264	266404	6.304	ng/ul	-0.01
Target Compounds						
16) Acetophenone	9.149	105	16344	1.695	ng/ul#	89
72) Phenanthrene	17.727	178	56317	1.317	ng/ul	94
74) Anthracene	17.727	178	56317	1.296	ng/ul	96
80) Fluoranthene	19.719	202	122097	2.584	ng/ul#	89
82) Pyrene	20.089	202	104826	2.134	ng/ul	99
85) Benzo(a)anthracene	21.981	228	70300	1.365	ng/ul#	93
86) Bis(2-ethylhexyl)phtha...	21.829	149	34170	1.470	ng/ul#	98
87) Chrysene	22.058	228	73468	1.534	ng/ul	94
90) Benzo(b)fluoranthene	24.408	252	103033	2.006	ng/ul#	89
93) Benzo(a)pyrene	25.389	252	76823	1.603	ng/ul#	96

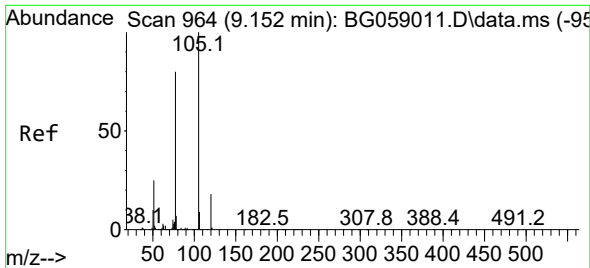
(#) = qualifier out of range (m) = manual integration (+) = signals summed

Data Path : Z:\svoasrv\HPCHEM1\BNA_G\Data\BG091223\
 Data File : BG059017.D
 Acq On : 12 Sep 2023 19:20
 Operator : MA/JU
 Sample : 04175-22
 Misc :
 ALS Vial : 8 Sample Multiplier: 1

Instrument :
 BNA_G
 ClientSampleId :
 EZYW5

Quant Time: Sep 12 23:57:12 2023
 Quant Method : Z:\svoasrv\HPCHEM1\BNA_G\Methods\SFAM-EPA-BG091023.MA.M
 Quant Title : SVOA CALIBRATION
 QLast Update : Tue Sep 12 23:54:19 2023
 Response via : Initial Calibration

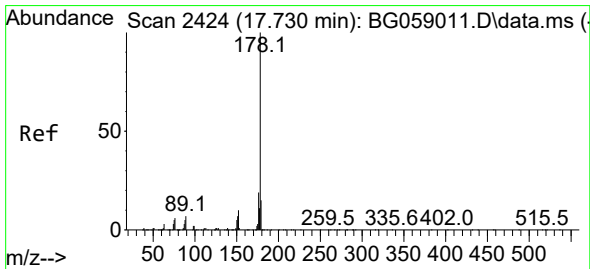
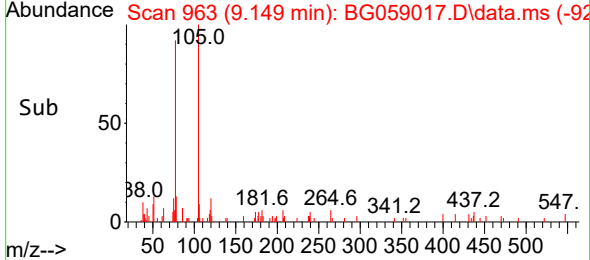
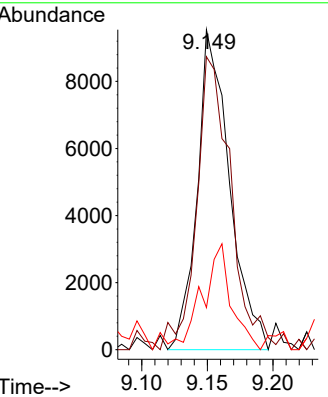
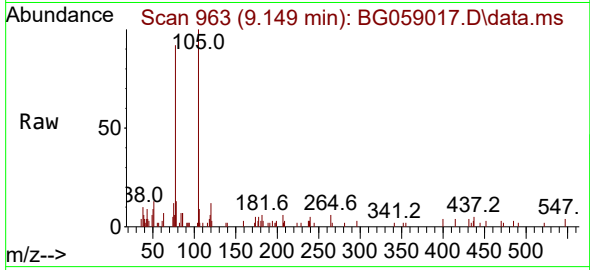




#16
 Acetophenone
 Concen: 1.695 ng/ul
 RT: 9.149 min Scan# 90
 Delta R.T. -0.002 min
 Lab File: BG059017.D
 Acq: 12 Sep 2023 19:20

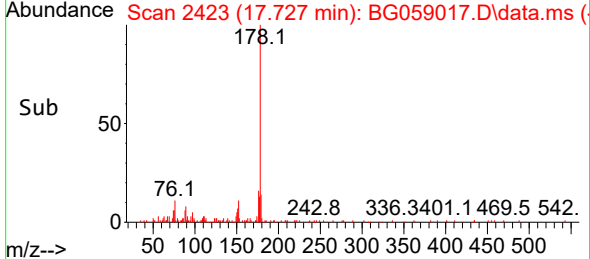
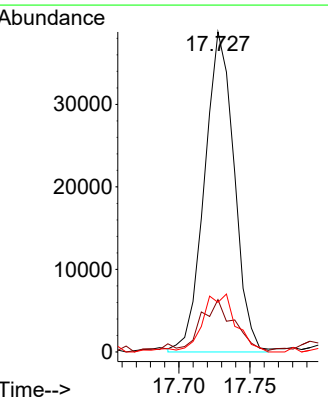
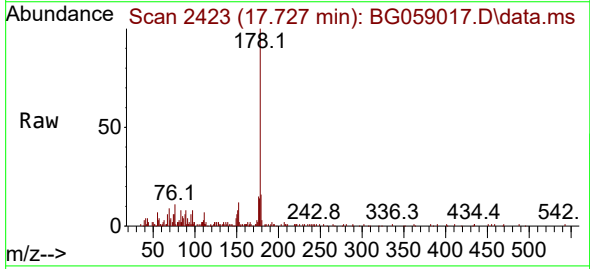
Instrument :
 BNA_G
 ClientSampleId :
 EZYW5

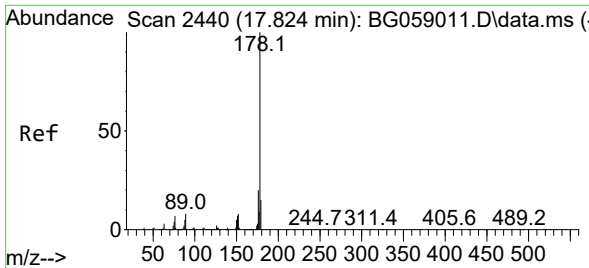
Tgt Ion	Resp	Lower	Upper
105	16344		
77	91.6	67.3	100.9
51	13.1	19.3	28.9



#72
 Phenanthrene
 Concen: 1.317 ng/ul
 RT: 17.727 min Scan# 2423
 Delta R.T. -0.002 min
 Lab File: BG059017.D
 Acq: 12 Sep 2023 19:20

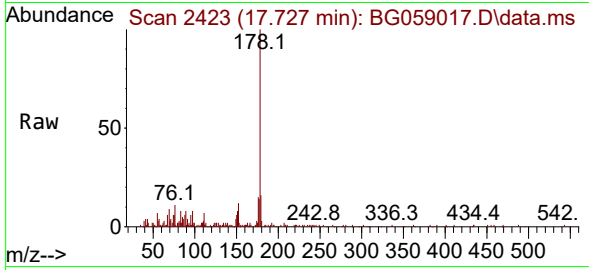
Tgt Ion	Resp	Lower	Upper
178	56317		
179	16.3	11.8	17.8
176	15.5	15.1	22.7



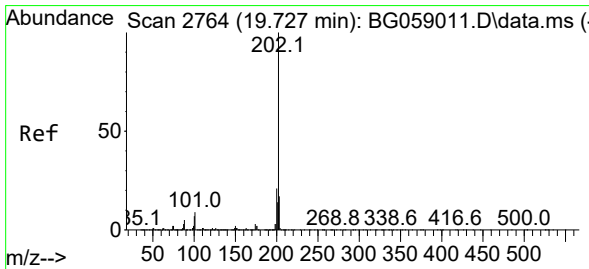
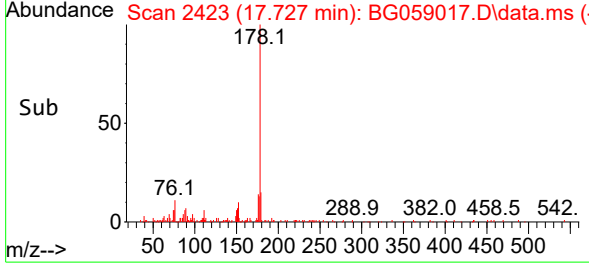
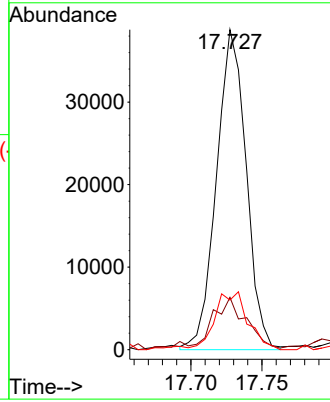


#74
 Anthracene
 Concen: 1.296 ng/ul
 RT: 17.727 min Scan# 2440
 Delta R.T. -0.096 min
 Lab File: BG059017.D
 Acq: 12 Sep 2023 19:20

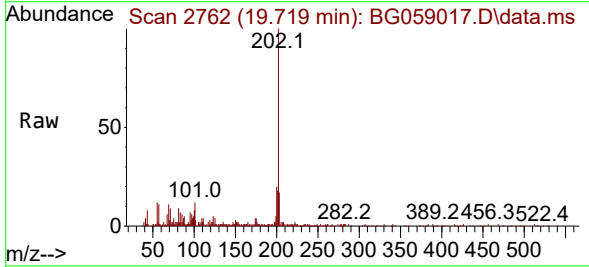
Instrument : BNA_G
 ClientSampleId : EZYW5



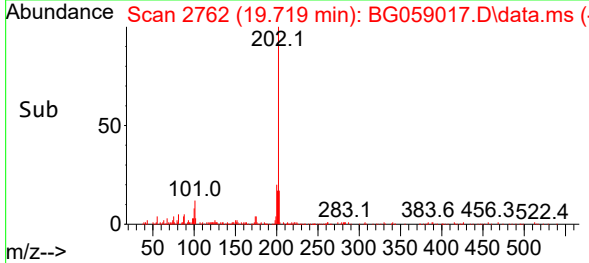
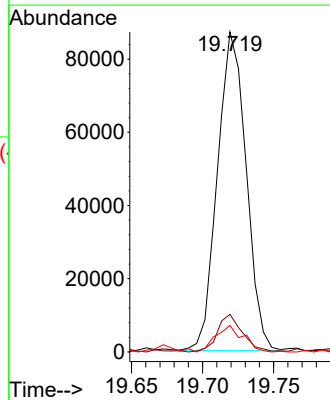
Tgt Ion:178 Resp: 56317
 Ion Ratio Lower Upper
 178 100
 179 16.3 12.2 18.4
 176 15.5 14.4 21.6

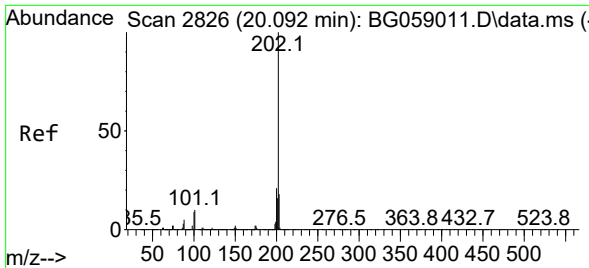


#80
 Fluoranthene
 Concen: 2.584 ng/ul
 RT: 19.719 min Scan# 2762
 Delta R.T. -0.008 min
 Lab File: BG059017.D
 Acq: 12 Sep 2023 19:20



Tgt Ion:202 Resp: 122097
 Ion Ratio Lower Upper
 202 100
 101 14.5 6.1 9.1#
 100 8.3 5.9 8.9



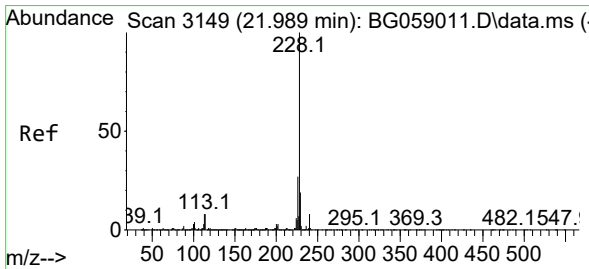
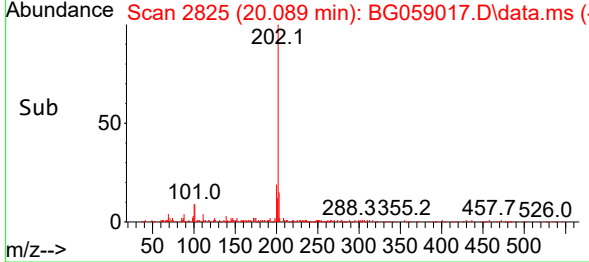
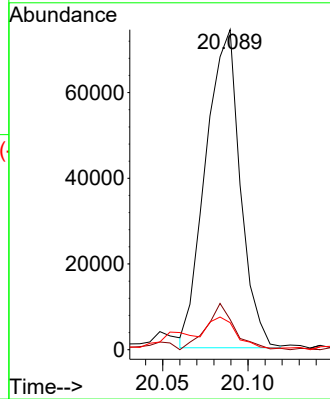
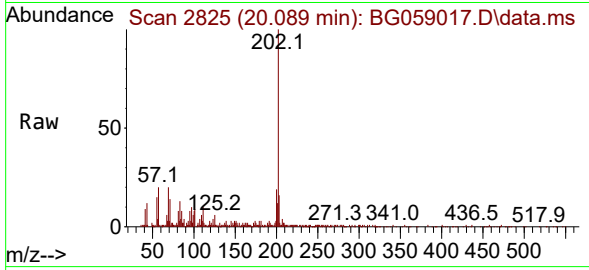


#82
 Pyrene
 Concen: 2.134 ng/ul
 RT: 20.089 min Scan# 21
 Delta R.T. -0.002 min
 Lab File: BG059017.D
 Acq: 12 Sep 2023 19:20

Instrument :
 BNA_G
 ClientSampleId :
 EZYW5

Tgt Ion:202 Resp: 104826

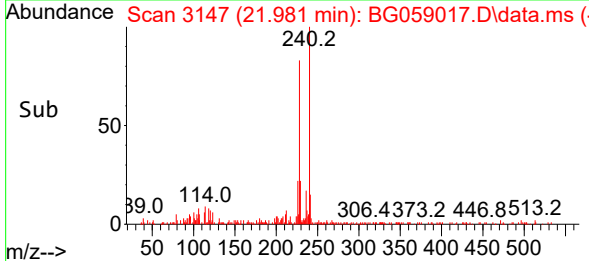
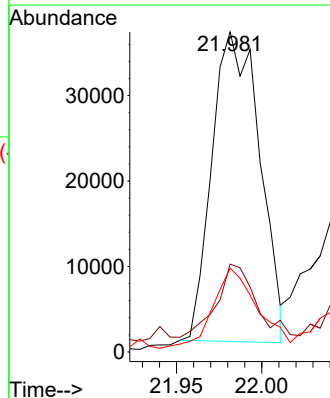
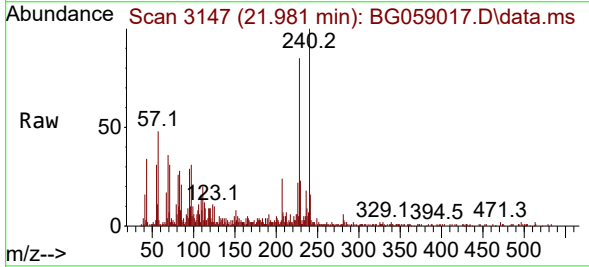
Ion	Ratio	Lower	Upper
202	100		
101	9.5	7.5	11.3
100	8.5	6.3	9.5

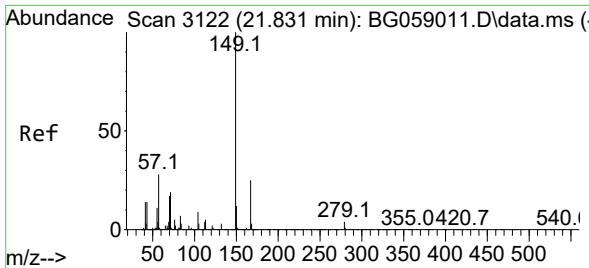


#85
 Benzo(a)anthracene
 Concen: 1.365 ng/ul
 RT: 21.981 min Scan# 3147
 Delta R.T. -0.008 min
 Lab File: BG059017.D
 Acq: 12 Sep 2023 19:20

Tgt Ion:228 Resp: 70300

Ion	Ratio	Lower	Upper
228	100		
229	27.5	16.0	24.0#
226	26.2	20.8	31.2

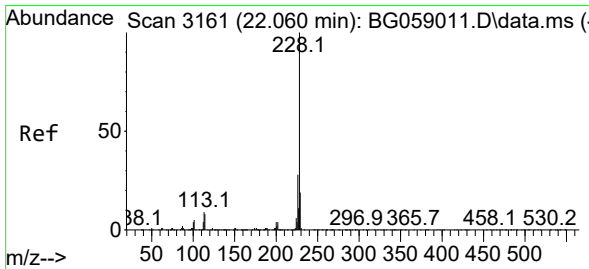
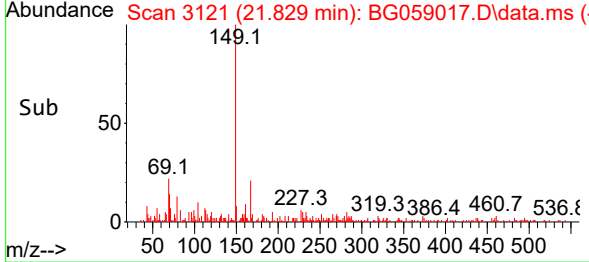
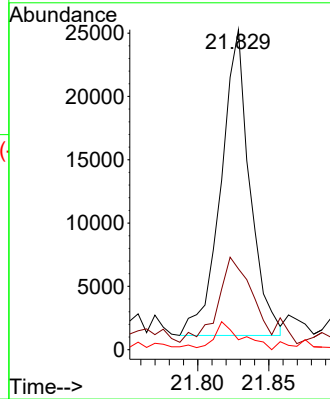
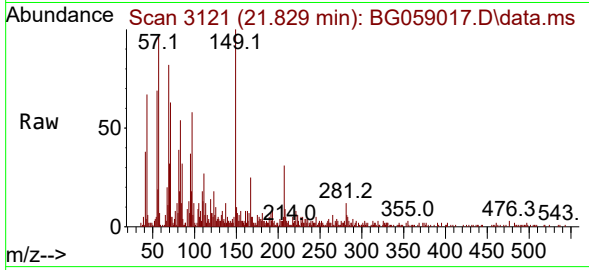




#86
 Bis(2-ethylhexyl)phthalate
 Concen: 1.470 ng/ul
 RT: 21.829 min Scan# 3122
 Delta R.T. -0.002 min
 Lab File: BG059017.D
 Acq: 12 Sep 2023 19:20

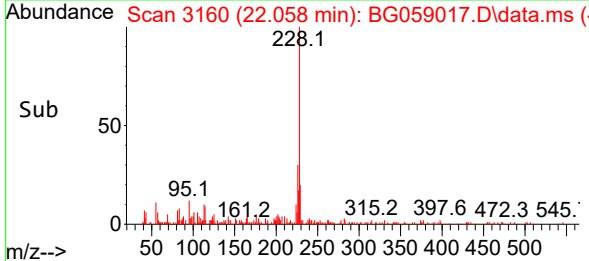
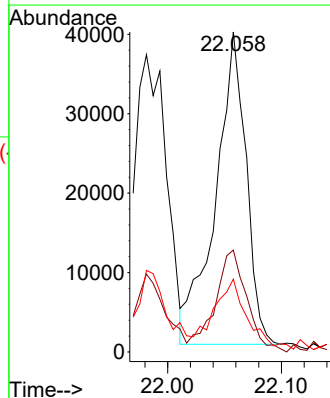
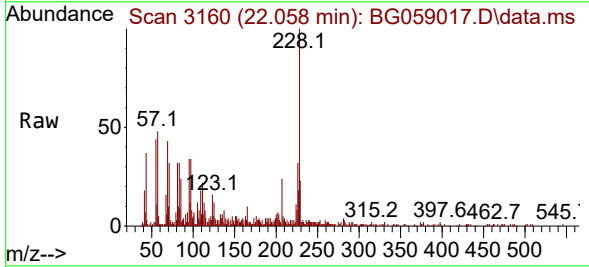
Instrument :
 BNA_G
 ClientSampleId :
 EZYW5

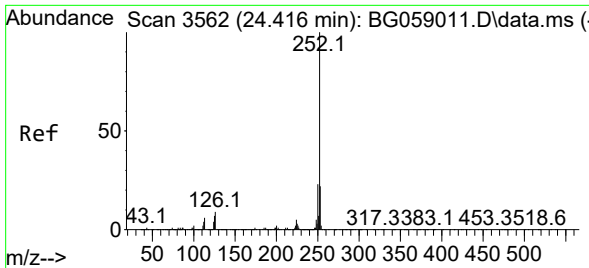
Tgt Ion:149 Resp: 34170
 Ion Ratio Lower Upper
 149 100
 167 25.3 21.0 31.6
 279 3.1 3.8 5.8#



#87
 Chrysene
 Concen: 1.534 ng/ul
 RT: 22.058 min Scan# 3160
 Delta R.T. -0.002 min
 Lab File: BG059017.D
 Acq: 12 Sep 2023 19:20

Tgt Ion:228 Resp: 73468
 Ion Ratio Lower Upper
 228 100
 226 31.8 23.2 34.8
 229 22.8 15.3 22.9

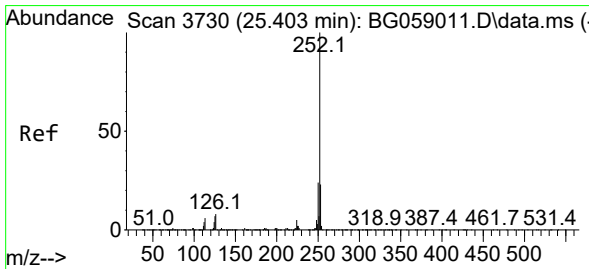
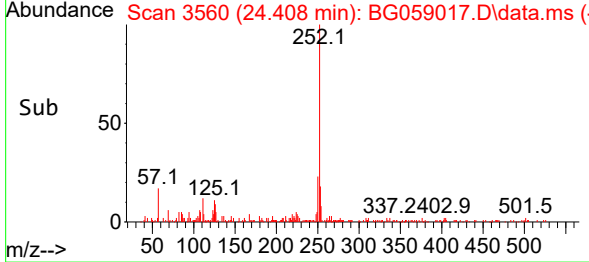
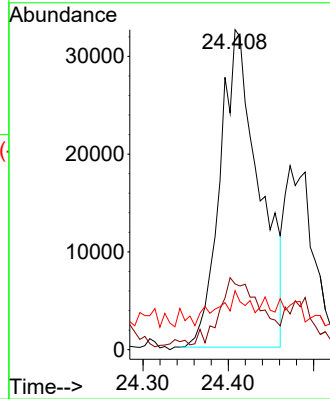
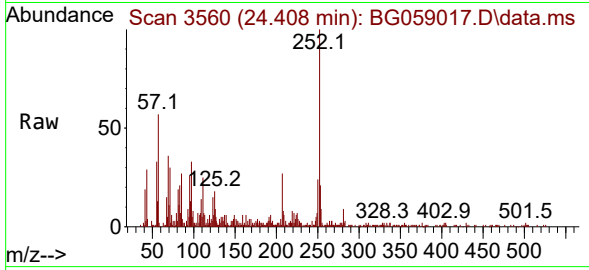




#90
 Benzo(b)fluoranthene
 Concen: 2.006 ng/u1
 RT: 24.408 min Scan# 31
 Delta R.T. -0.008 min
 Lab File: BG059017.D
 Acq: 12 Sep 2023 19:20

Instrument :
 BNA_G
 ClientSampleId :
 EZYW5

Tgt Ion:252 Resp: 103033
 Ion Ratio Lower Upper
 252 100
 253 20.6 17.8 26.8
 125 18.5 6.2 9.2#



#93
 Benzo(a)pyrene
 Concen: 1.603 ng/u1
 RT: 25.389 min Scan# 3727
 Delta R.T. -0.014 min
 Lab File: BG059017.D
 Acq: 12 Sep 2023 19:20

Tgt Ion:252 Resp: 76823
 Ion Ratio Lower Upper
 252 100
 253 21.1 17.1 25.7
 125 11.8 5.3 7.9#

