

Data Path : Z:\SVOASRV\HPCHEM1\BNA G\DATA\BG091318\
 Data File : BG036688.D
 Acq On : 13 Sep 2018 18:39
 Operator : JU/SJ
 Sample : J4875-12
 Misc :
 ALS Vial : 4 Sample Multiplier: 1

Instrument :
 BNA_G
 ClientSampleId :
 091118-SIDI-F-D-M

Quant Time: Sep 14 01:27:36 2018
 Quant Method : Z:\SVOASRV\HPCHEM1\BNA G\METHODS\8270-BG082318.M
 Quant Title : ASP BNA STANDARDS FOR 5 POINT CALIBRATION
 QLast Update : Fri Aug 31 13:03:20 2018
 Response via : Initial Calibration

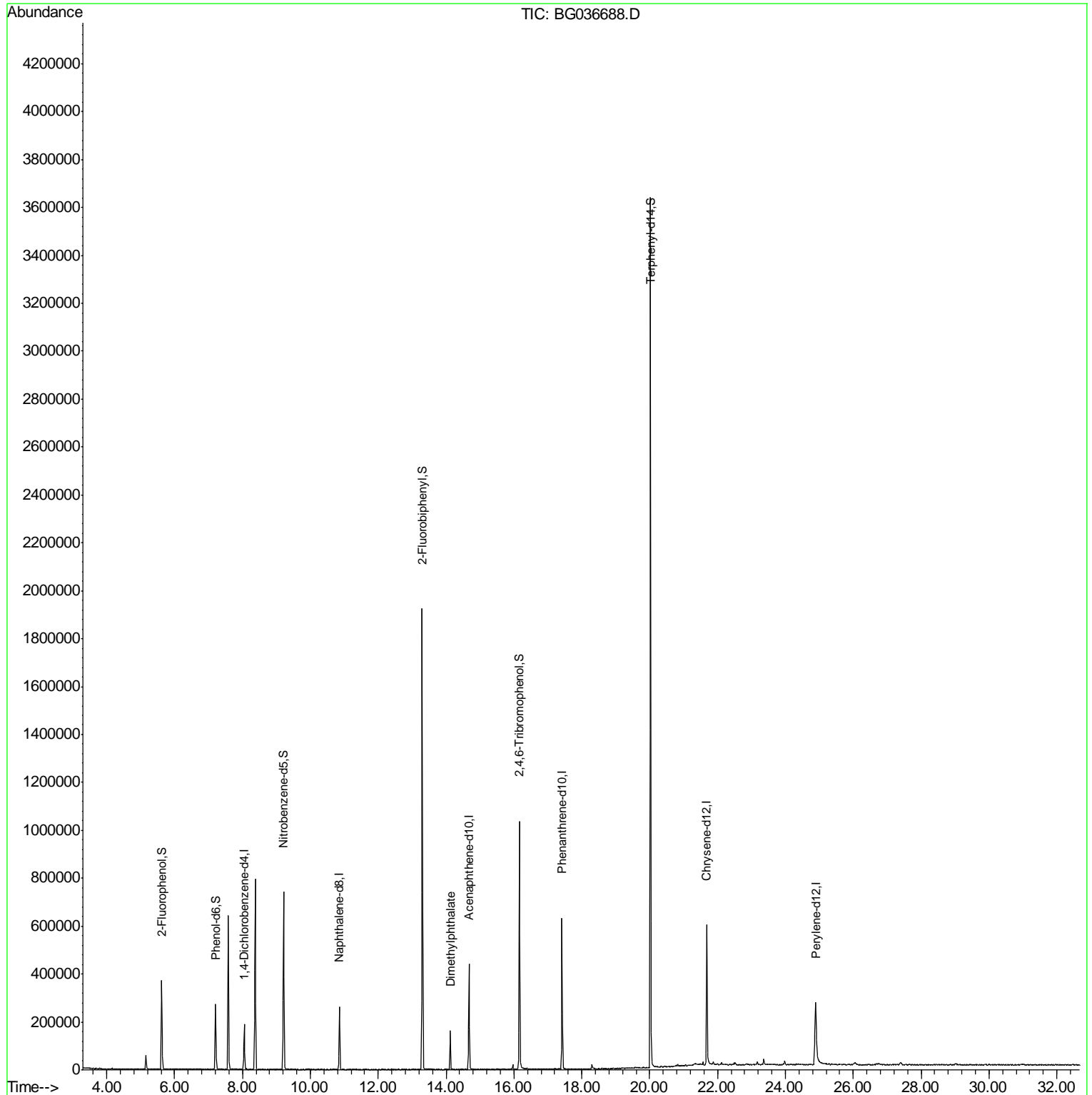
| Internal Standards | R.T. | QIon | Response | Conc | Units | Dev(Min) |
|-----------------------------|-------|------|----------|--------|-------|----------|
| 1) 1,4-Dichlorobenzene-d4 | 8.05 | 152 | 54002 | 20.00 | ng | -0.01 |
| 21) Naphthalene-d8 | 10.86 | 136 | 228608 | 20.00 | ng | 0.00 |
| 38) Acenaphthene-d10 | 14.68 | 164 | 152959 | 20.00 | ng | 0.00 |
| 63) Phenanthrene-d10 | 17.42 | 188 | 393318 | 20.00 | ng | -0.01 |
| 75) Chrysene-d12 | 21.68 | 240 | 395143 | 20.00 | ng | -0.01 |
| 86) Perylene-d12 | 24.88 | 264 | 350584 | 20.00 | ng | -0.02 |
| System Monitoring Compounds | | | | | | |
| 5) 2-Fluorophenol | 5.62 | 112 | 158851 | 46.66 | ng | 0.00 |
| 7) Phenol-d6 | 7.20 | 99 | 159290 | 32.68 | ng | -0.01 |
| 23) Nitrobenzene-d5 | 9.21 | 82 | 447445 | 106.19 | ng | 0.00 |
| 41) 2,4,6-Tribromophenol | 16.16 | 330 | 194503 | 106.57 | ng | -0.01 |
| 44) 2-Fluorobiphenyl | 13.30 | 172 | 998968 | 93.25 | ng | -0.01 |
| 78) Terphenyl-d14 | 20.02 | 244 | 1763997 | 104.34 | ng | 0.00 |
| Target Compounds | | | | | | Qvalue |
| 49) Dimethylphthalate | 14.13 | 163 | 112264 | 8.988 | ng | 98 |

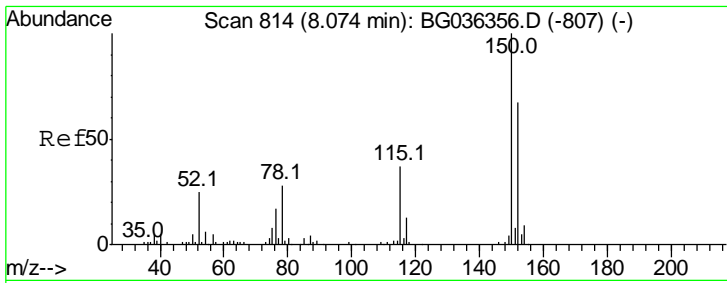
(#) = qualifier out of range (m) = manual integration (+) = signals summed

Data Path : Z:\SVOASRV\HPCHEM1\BNA G\DATA\BG091318\
Data File : BG036688.D
Acq On : 13 Sep 2018 18:39
Operator : JU/SJ
Sample : J4875-12
Misc :
ALS Vial : 4 Sample Multiplier: 1

Instrument :
BNA_G
ClientSampleId :
091118-SIDI-F-D-M

Quant Time: Sep 14 01:27:36 2018
Quant Method : Z:\SVOASRV\HPCHEM1\BNA G\METHODS\8270-BG082318.M
Quant Title : ASP BNA STANDARDS FOR 5 POINT CALIBRATION
QLast Update : Fri Aug 31 13:03:20 2018
Response via : Initial Calibration

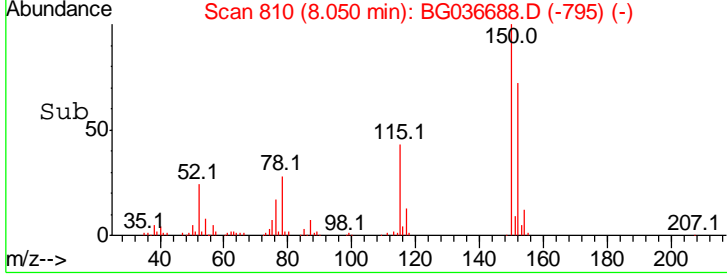
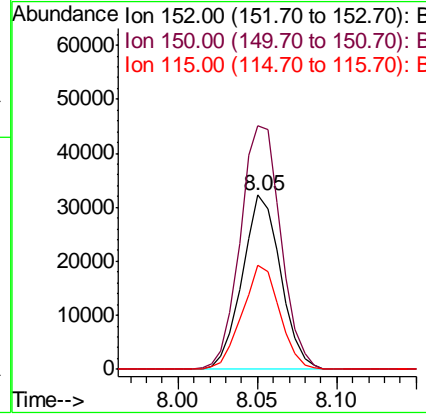
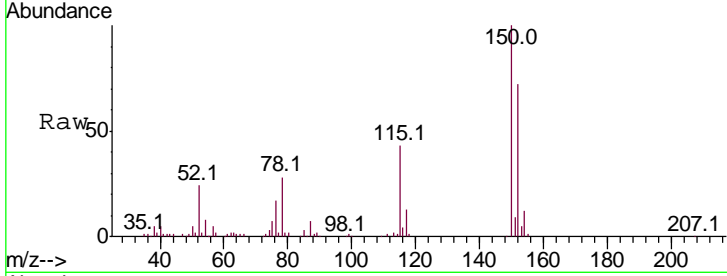




#1
 1,4-Dichlorobenzene-d4
 Concen: 20.000 ng
 RT: 8.05 min Scan# 810
 Delta R.T. -0.01 min
 Lab File: BG036688.D
 Acq: 13 Sep 2018 18:39

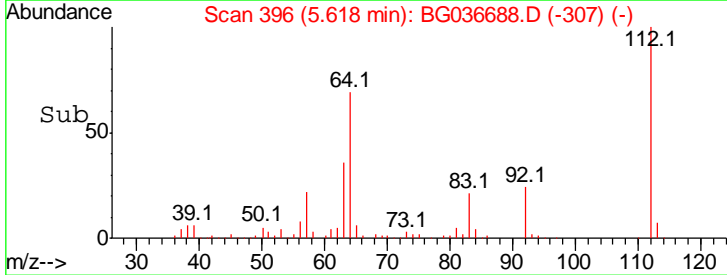
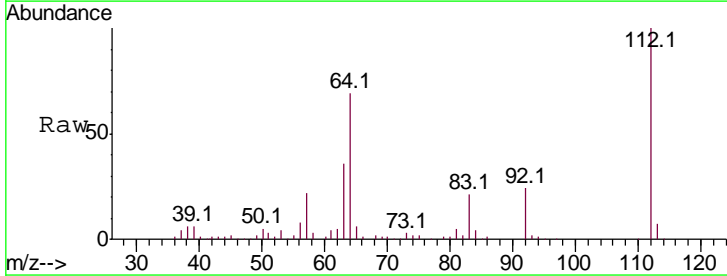
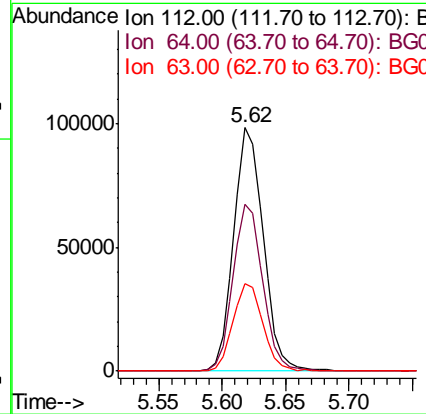
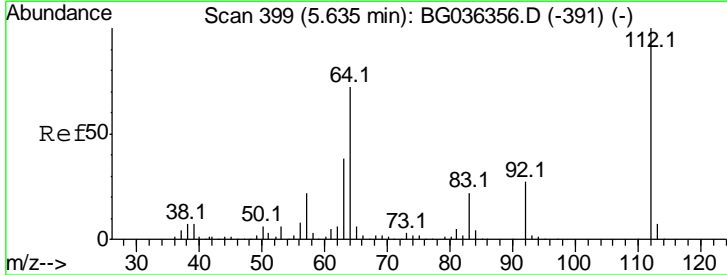
Instrument :
 BNA_G
ClientSampleId :
 091118-SIDI-F-D-M

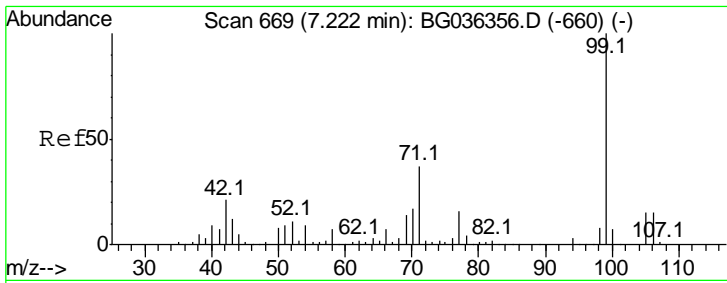
| Tgt Ion | Resp | Lower | Upper |
|---------|-------|-------|-------|
| 152 | 54002 | | |
| 152 | 100 | | |
| 150 | 139.8 | 119.5 | 179.3 |
| 115 | 60.1 | 44.5 | 66.7 |



#5
 2-Fluorophenol
 Concen: 46.662 ng
 RT: 5.62 min Scan# 396
 Delta R.T. -0.01 min
 Lab File: BG036688.D
 Acq: 13 Sep 2018 18:39

| Tgt Ion | Resp | Lower | Upper |
|---------|--------|-------|-------|
| 112 | 158851 | | |
| 112 | 100 | | |
| 64 | 68.6 | 57.2 | 85.8 |
| 63 | 35.9 | 30.8 | 46.2 |

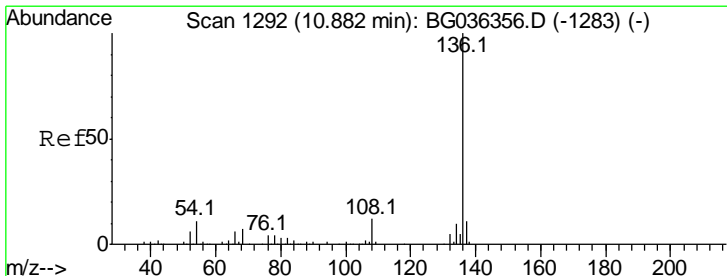
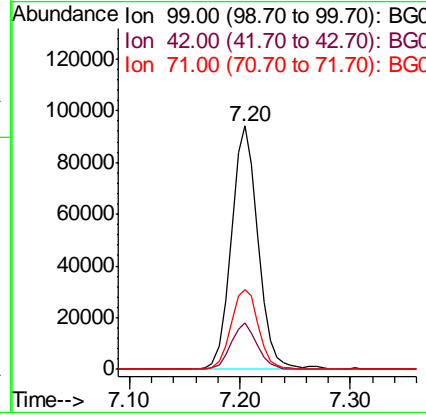
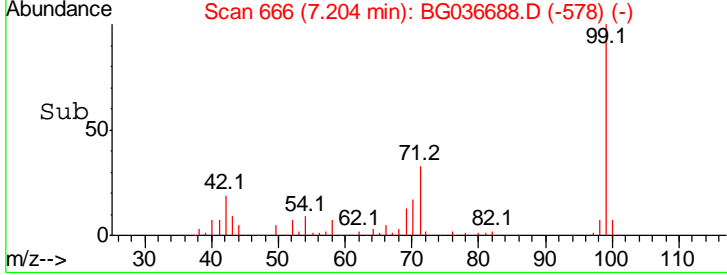
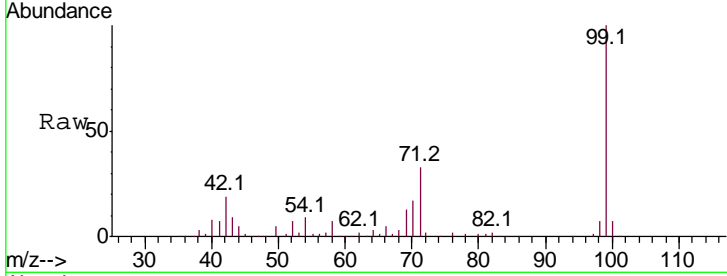




#7
 Phenol-d6
 Concen: 32.681 ng
 RT: 7.20 min Scan# 666
 Delta R.T. -0.01 min
 Lab File: BG036688.D
 Acq: 13 Sep 2018 18:39

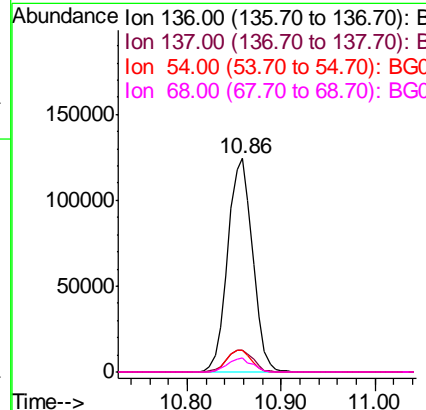
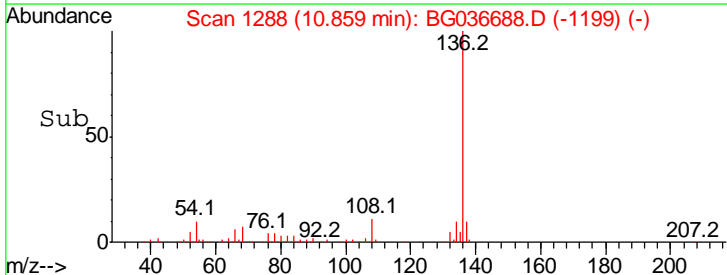
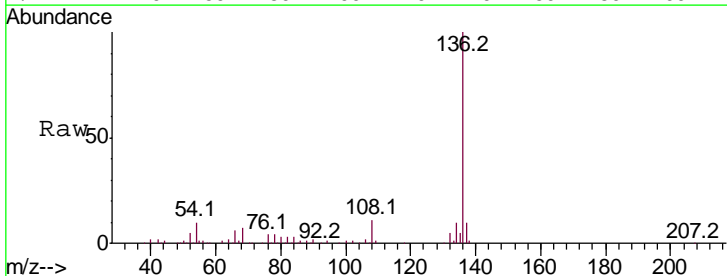
Instrument :
 BNA_G
 ClientSampleId :
 091118-SIDI-F-D-M

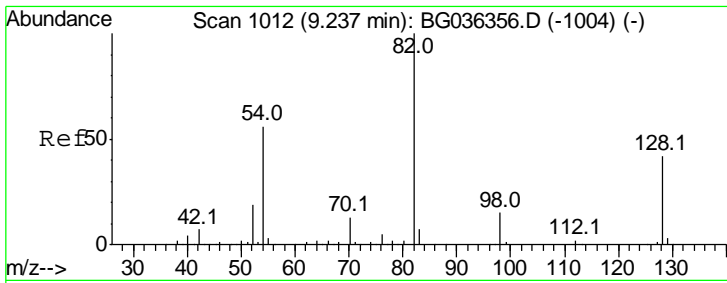
| Tgt Ion | Resp | Lower | Upper |
|---------|--------|-------|-------|
| 99 | 159290 | | |
| 99 | 100 | | |
| 42 | 19.1 | 16.5 | 24.7 |
| 71 | 32.8 | 29.4 | 44.2 |



#21
 Naphthalene-d8
 Concen: 20.000 ng
 RT: 10.86 min Scan# 1288
 Delta R.T. -0.01 min
 Lab File: BG036688.D
 Acq: 13 Sep 2018 18:39

| Tgt Ion | Resp | Lower | Upper |
|---------|--------|-------|-------|
| 136 | 228608 | | |
| 136 | 100 | | |
| 137 | 10.1 | 8.8 | 13.2 |
| 54 | 10.0 | 9.2 | 13.8 |
| 68 | 6.8 | 5.8 | 8.6 |

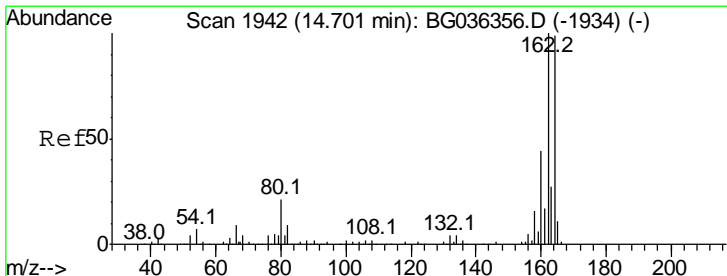
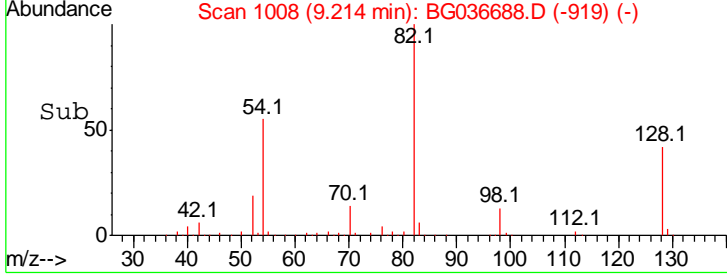
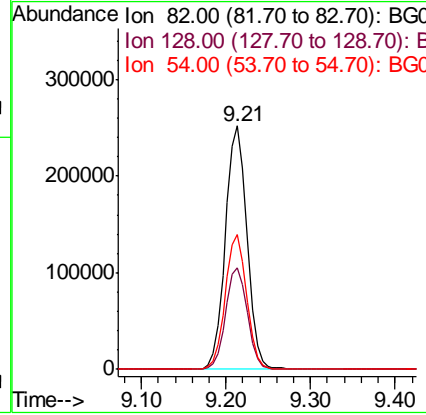
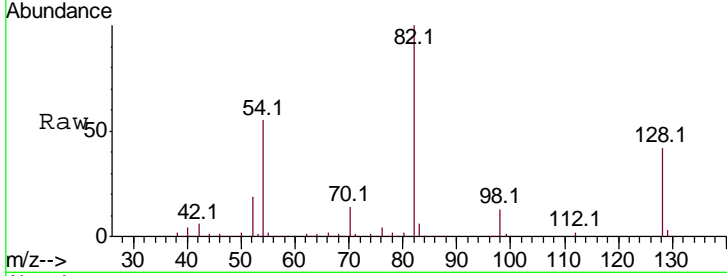




#23
 Nitrobenzene-d5
 Concen: 106.194 ng
 RT: 9.21 min Scan# 1008
 Delta R.T. -0.01 min
 Lab File: BG036688.D
 Acq: 13 Sep 2018 18:39

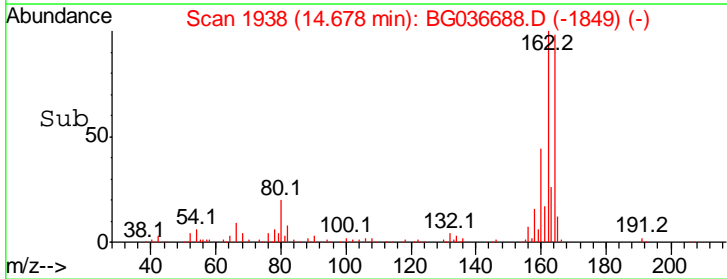
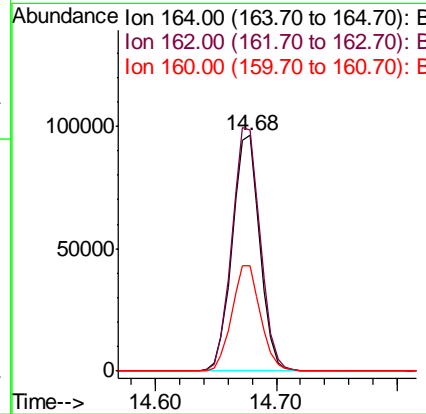
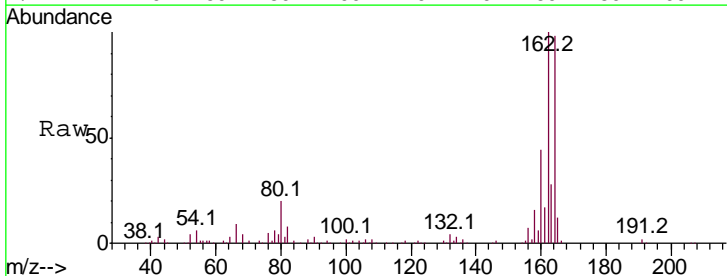
Instrument :
 BNA_G
ClientSampled :
 091118-SIDI-F-D-M

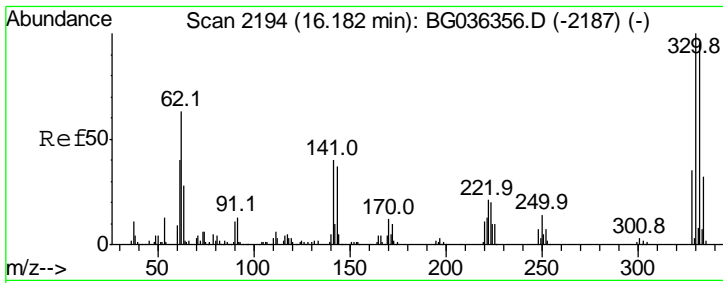
| Tgt Ion | Resp | Lower | Upper |
|---------|------|-------|-------|
| 82 | 100 | | |
| 128 | 41.6 | 33.3 | 49.9 |
| 54 | 55.4 | 45.1 | 67.7 |



#38
 Acenaphthene-d10
 Concen: 20.000 ng
 RT: 14.68 min Scan# 1938
 Delta R.T. -0.01 min
 Lab File: BG036688.D
 Acq: 13 Sep 2018 18:39

| Tgt Ion | Resp | Lower | Upper |
|---------|-------|-------|-------|
| 164 | 100 | | |
| 162 | 102.0 | 80.7 | 121.1 |
| 160 | 44.5 | 35.3 | 52.9 |

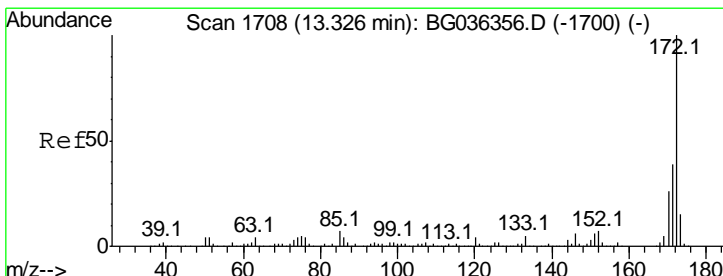
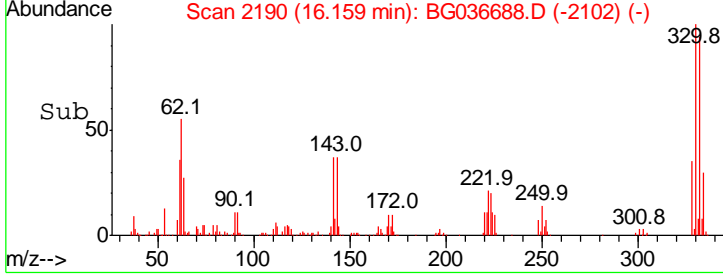
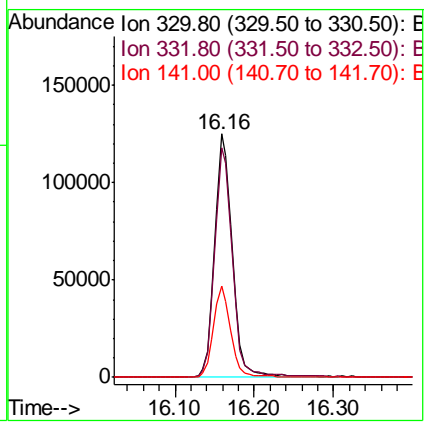
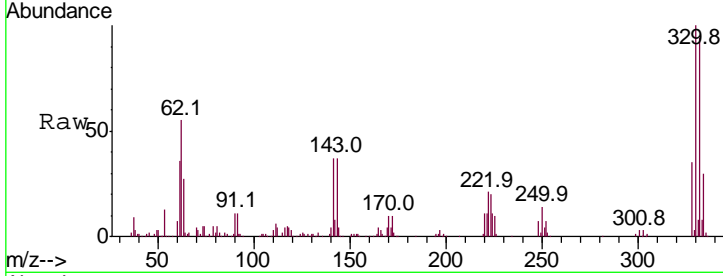




#41
 2,4,6-Tribromophenol
 Concen: 106.569 ng
 RT: 16.16 min Scan# 2190
 Delta R.T. -0.01 min
 Lab File: BG036688.D
 Acq: 13 Sep 2018 18:39

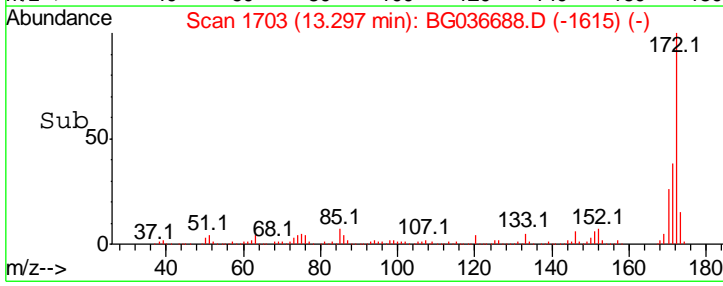
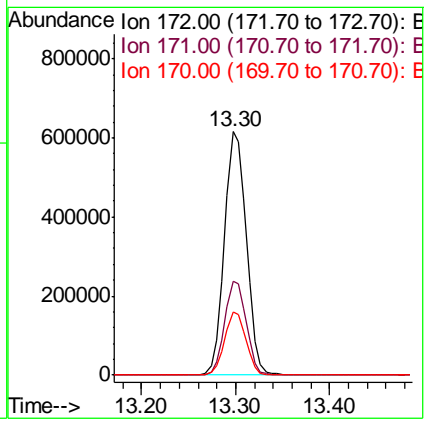
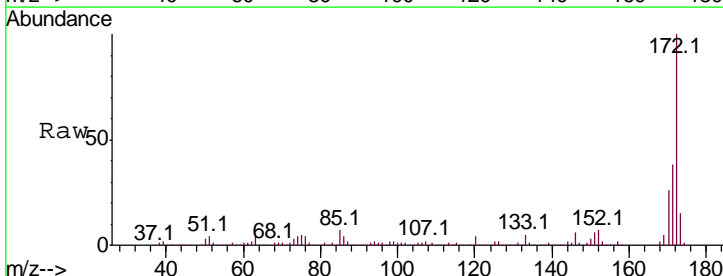
Instrument :
 BNA_G
 ClientSampled :
 091118-SIDI-F-D-M

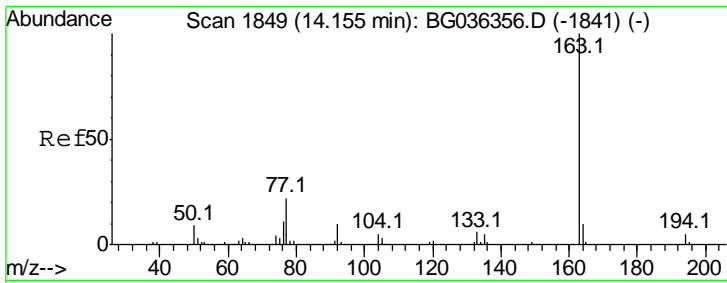
| Tgt Ion | Resp | Lower | Upper |
|---------|------|-------|-------|
| 330 | 100 | | |
| 332 | 94.7 | 75.4 | 113.2 |
| 141 | 36.4 | 30.7 | 46.1 |



#44
 2-Fluorobiphenyl
 Concen: 93.250 ng
 RT: 13.30 min Scan# 1703
 Delta R.T. -0.01 min
 Lab File: BG036688.D
 Acq: 13 Sep 2018 18:39

| Tgt Ion | Resp | Lower | Upper |
|---------|------|-------|-------|
| 172 | 100 | | |
| 171 | 38.3 | 31.3 | 46.9 |
| 170 | 26.0 | 21.0 | 31.6 |

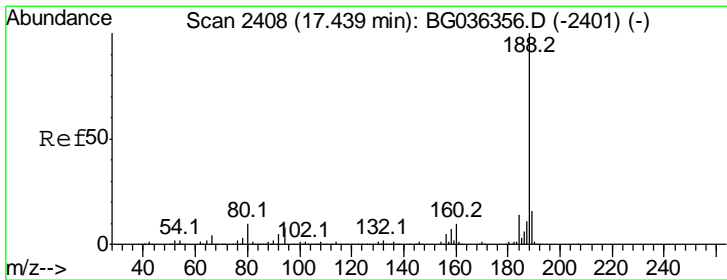
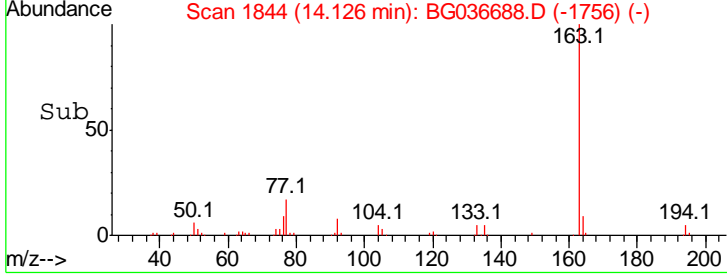
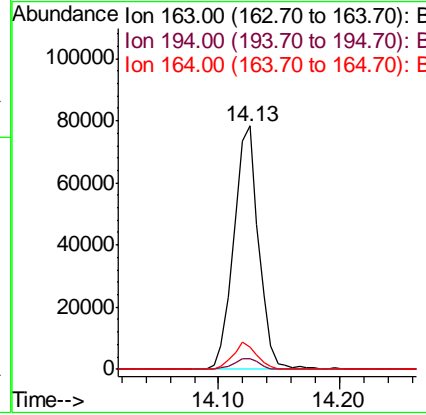
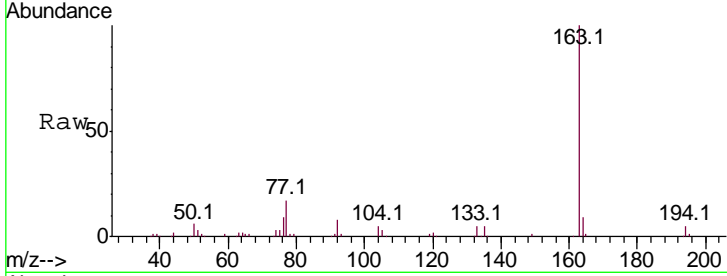




#49
 Dimethylphthalate
 Concen: 8.988 ng
 RT: 14.13 min Scan# 1844
 Delta R.T. -0.01 min
 Lab File: BG036688.D
 Acq: 13 Sep 2018 18:39

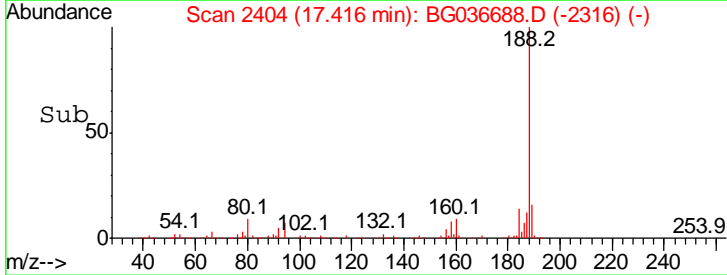
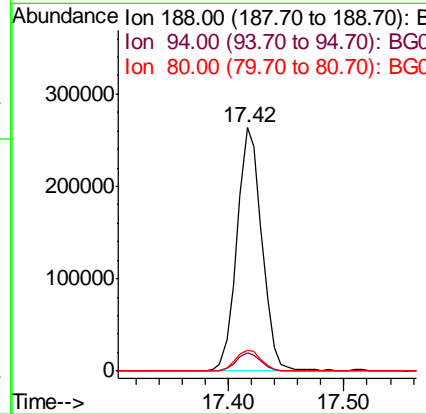
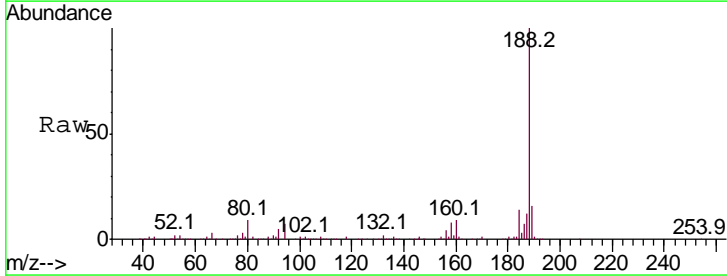
Instrument :
 BNA_G
 ClientSampleId :
 091118-SIDI-F-D-M

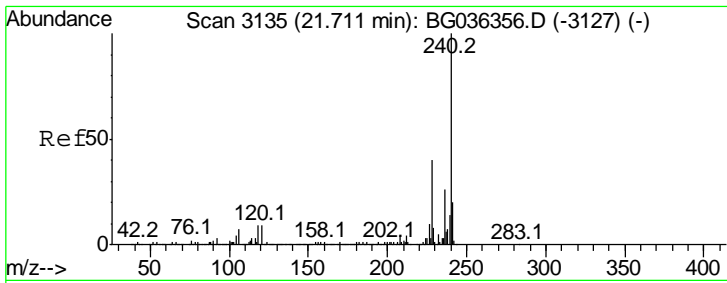
| Tgt Ion | Resp | Lower | Upper |
|---------|------|-------|-------|
| 163 | 100 | | |
| 194 | 4.6 | 4.0 | 6.0 |
| 164 | 9.3 | 8.1 | 12.1 |



#63
 Phenanthrene-d10
 Concen: 20.000 ng
 RT: 17.42 min Scan# 2404
 Delta R.T. -0.01 min
 Lab File: BG036688.D
 Acq: 13 Sep 2018 18:39

| Tgt Ion | Resp | Lower | Upper |
|---------|------|-------|-------|
| 188 | 100 | | |
| 94 | 7.4 | 6.7 | 10.1 |
| 80 | 8.5 | 8.1 | 12.1 |

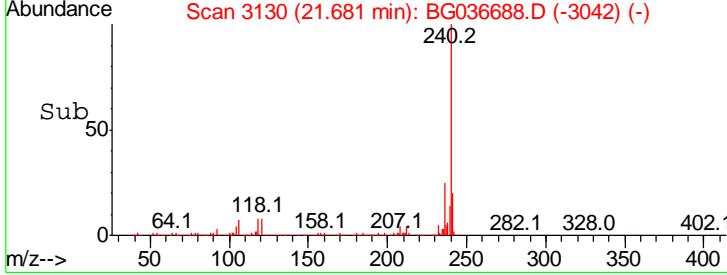
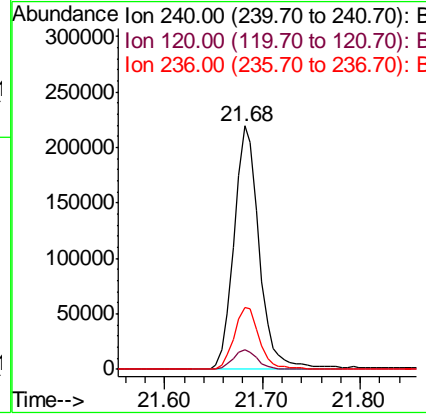
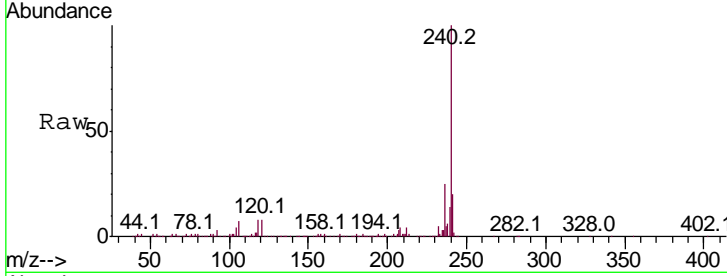




#75
 Chrysene-d12
 Concen: 20.000 ng
 RT: 21.68 min Scan# 3130
 Delta R.T. -0.01 min
 Lab File: BG036688.D
 Acq: 13 Sep 2018 18:39

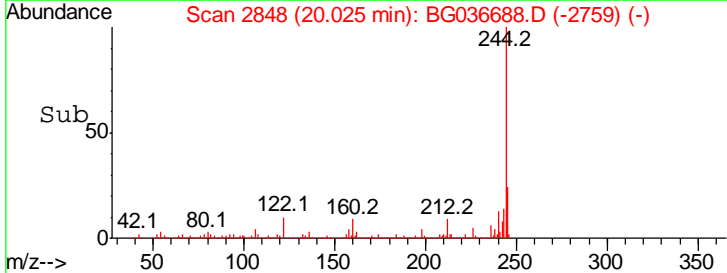
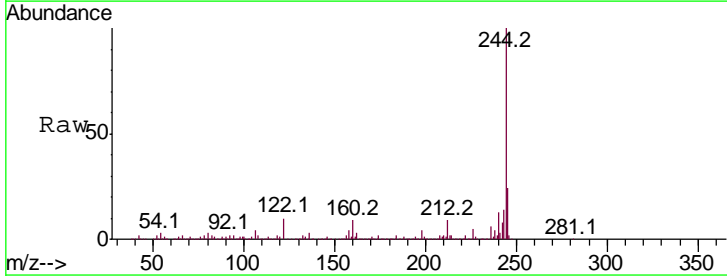
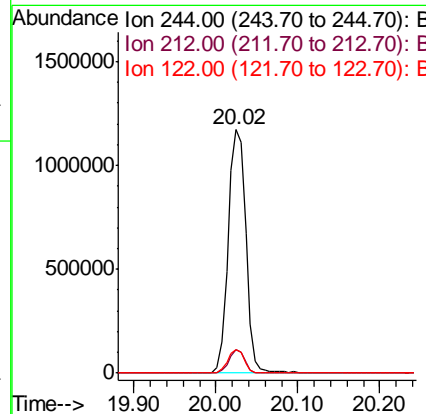
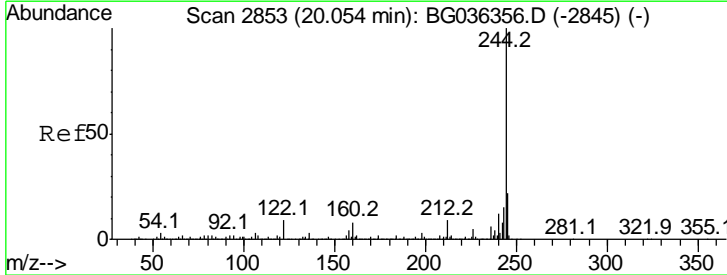
Instrument :
 BNA_G
ClientSampleId :
 091118-SIDI-F-D-M

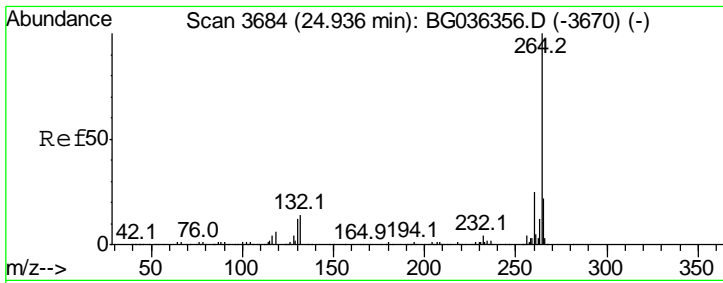
| Tgt Ion | Resp | Lower | Upper |
|---------|------|-------|-------|
| 240 | 100 | | |
| 120 | 8.2 | 6.9 | 10.3 |
| 236 | 25.4 | 21.2 | 31.8 |



#78
 Terphenyl-d14
 Concen: 104.344 ng
 RT: 20.02 min Scan# 2848
 Delta R.T. -0.01 min
 Lab File: BG036688.D
 Acq: 13 Sep 2018 18:39

| Tgt Ion | Resp | Lower | Upper |
|---------|------|-------|-------|
| 244 | 100 | | |
| 212 | 9.5 | 7.0 | 10.6 |
| 122 | 9.8 | 7.1 | 10.7 |





#86
 Perylene-d12
 Concen: 20.000 ng
 RT: 24.88 min Scan# 3675
 Delta R.T. -0.02 min
 Lab File: BG036688.D
 Acq: 13 Sep 2018 18:39

Instrument :
 BNA_G
 ClientSampleId :
 091118-SIDI-F-D-M

Tot Ion: 264 Resp: 350584

| Ion | Ratio | Lower | Upper |
|-----|-------|-------|-------|
| 264 | 100 | | |
| 260 | 23.3 | 19.6 | 29.4 |
| 265 | 20.8 | 17.4 | 26.0 |

