

Data Path : Z:\svoasrv\HPCHEM1\BNA_G\Data\BG091422\
 Data File : BG054940.D
 Acq On : 14 Sep 2022 11:33
 Operator : CG/JU
 Sample : PB147612BL
 Misc :
 ALS Vial : 3 Sample Multiplier: 1

Instrument :
 BNA_G
 ClientSampleId :
 PB147612BL

Quant Time: Sep 15 03:18:44 2022
 Quant Method : Z:\svoasrv\HPCHEM1\BNA_G\Methods\8270-BG082522.M
 Quant Title : ASP BNA STANDARDS FOR 5 POINT CALIBRATION
 QLast Update : Thu Sep 15 03:14:10 2022
 Response via : Initial Calibration

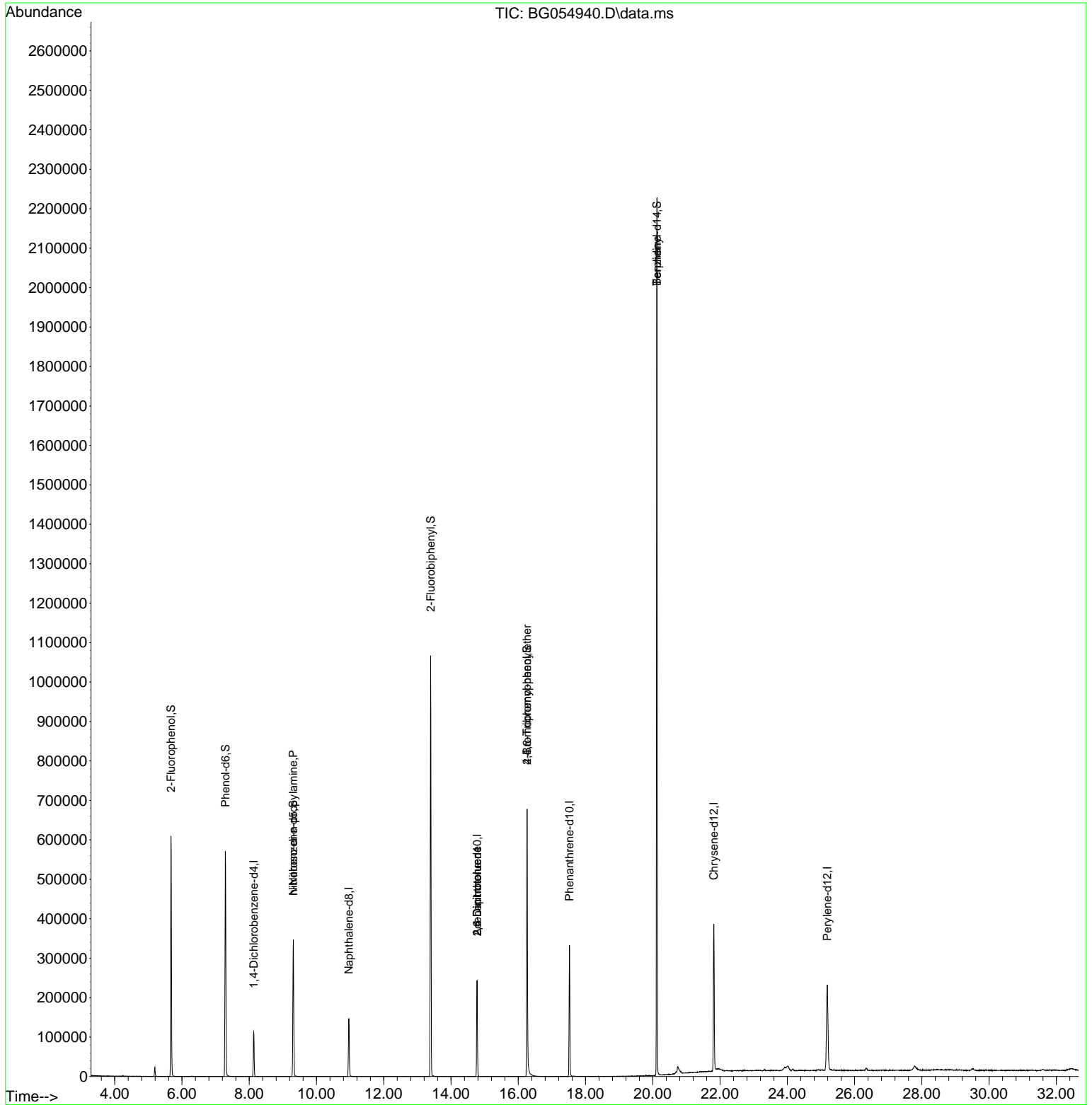
Compound	R.T.	QIon	Response	Conc	Units	Dev(Min)
Internal Standards						
1) 1,4-Dichlorobenzene-d4	8.129	152	36881	20.000	ng	0.00
21) Naphthalene-d8	10.961	136	144145	20.000	ng	0.00
39) Acenaphthene-d10	14.775	164	97855	20.000	ng	0.00
64) Phenanthrene-d10	17.518	188	236454	20.000	ng	0.00
76) Chrysene-d12	21.813	240	255678	20.000	ng	0.00
86) Perylene-d12	25.186	264	264043	20.000	ng	0.00
System Monitoring Compounds						
5) 2-Fluorophenol	5.673	112	302163	142.668	ng	0.00
7) Phenol-d6	7.289	99	388808	134.236	ng	0.00
23) Nitrobenzene-d5	9.310	82	227614	82.895	ng	0.00
42) 2,4,6-Tribromophenol	16.261	330	177953	145.534	ng	0.00
45) 2-Fluorobiphenyl	13.394	172	593461	91.153	ng	0.00
79) Terphenyl-d14	20.121	244	1155136	89.518	ng	0.00
Target Compounds						
19) n-Nitroso-di-n-propyla...	9.310	70	27549	13.831	ng	# 76
51) 2,6-Dinitrotoluene	14.775	165	12889	8.359	ng	# 20
57) 2,4-Dinitrotoluene	14.775	165	12889	6.043	ng	# 18
67) 4-Bromophenyl-phenylether	16.261	248	10957	4.221	ng	# 1
77) Benzidine	20.121	184	15615	2.466	ng	# 91

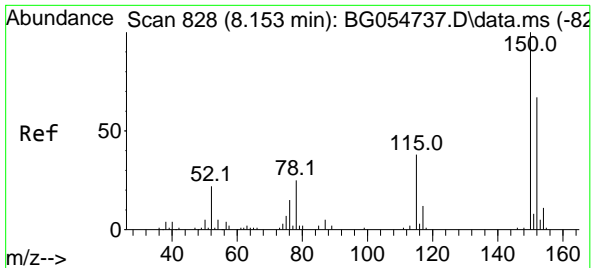
(#) = qualifier out of range (m) = manual integration (+) = signals summed

Data Path : Z:\svoasrv\HPCHEM1\BNA_G\Data\BG091422\
 Data File : BG054940.D
 Acq On : 14 Sep 2022 11:33
 Operator : CG/JU
 Sample : PB147612BL
 Misc :
 ALS Vial : 3 Sample Multiplier: 1

Instrument :
 BNA_G
 ClientSampleId :
 PB147612BL

Quant Time: Sep 15 03:18:44 2022
 Quant Method : Z:\svoasrv\HPCHEM1\BNA_G\Methods\8270-BG082522.M
 Quant Title : ASP BNA STANDARDS FOR 5 POINT CALIBRATION
 QLast Update : Thu Sep 15 03:14:10 2022
 Response via : Initial Calibration

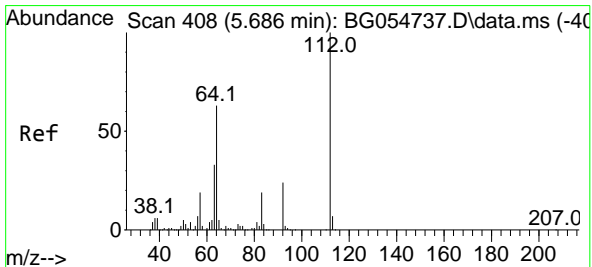
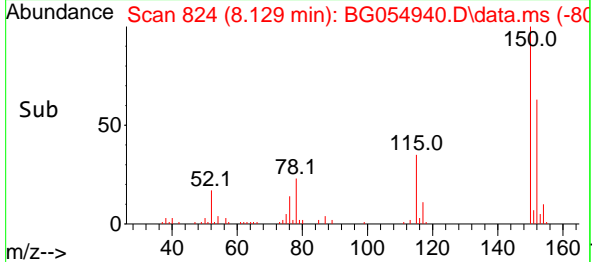
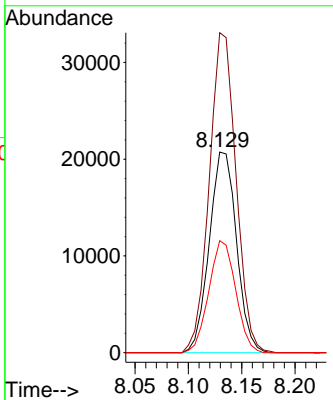
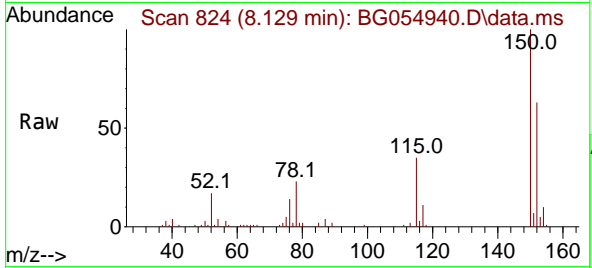




#1
 1,4-Dichlorobenzene-d4
 Concen: 20.000 ng
 RT: 8.129 min Scan# 81
 Delta R.T. -0.006 min
 Lab File: BG054940.D
 Acq: 14 Sep 2022 11:33

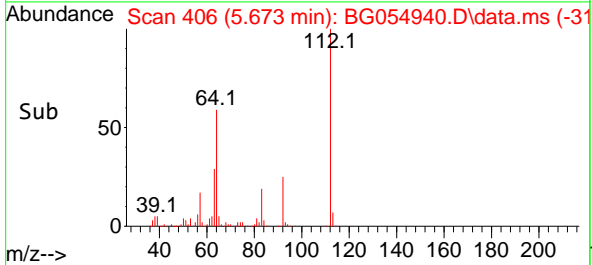
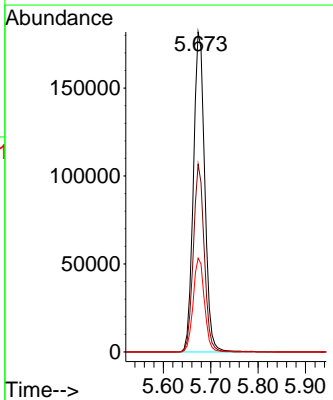
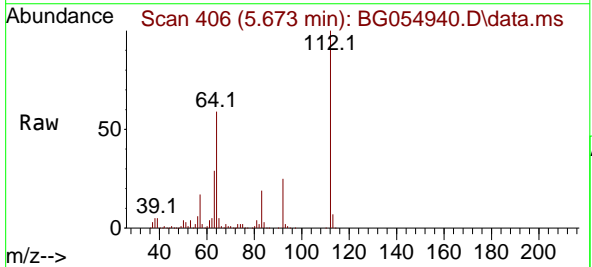
Instrument :
 BNA_G
 ClientSampleId :
 PB147612BL

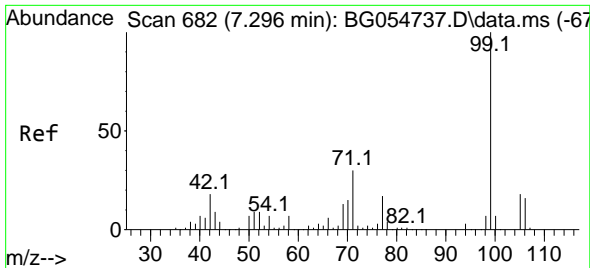
Tgt Ion:152 Resp: 36881
 Ion Ratio Lower Upper
 152 100
 150 159.5 125.2 187.8
 115 55.8 47.9 71.9



#5
 2-Fluorophenol
 Concen: 142.668 ng
 RT: 5.673 min Scan# 406
 Delta R.T. 0.000 min
 Lab File: BG054940.D
 Acq: 14 Sep 2022 11:33

Tgt Ion:112 Resp: 302163
 Ion Ratio Lower Upper
 112 100
 64 58.6 49.3 73.9
 63 29.3 26.3 39.5



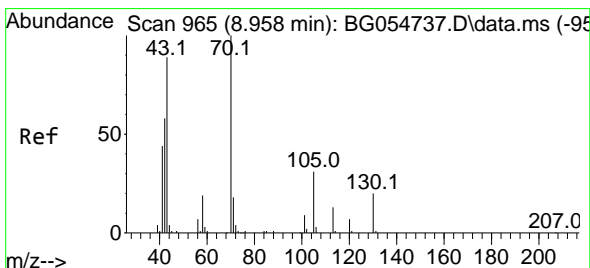
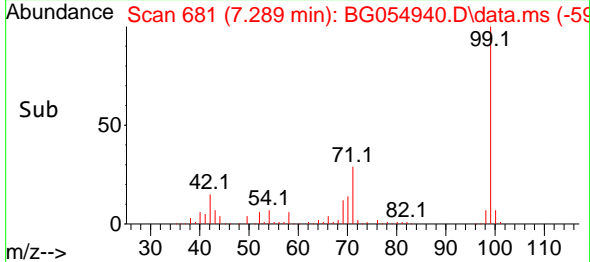
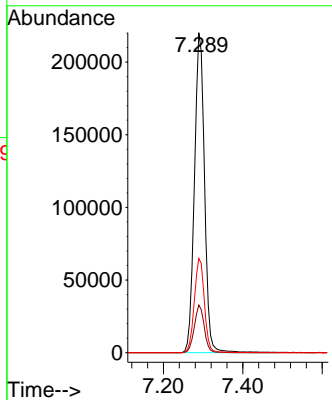
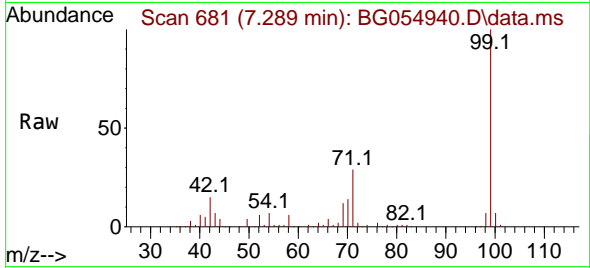


#7
 Phenol-d6
 Concen: 134.236 ng
 RT: 7.289 min Scan# 61
 Delta R.T. 0.000 min
 Lab File: BG054940.D
 Acq: 14 Sep 2022 11:33

Instrument :
 BNA_G
 ClientSampleId :
 PB147612BL

Tgt Ion: 99 Resp: 388808

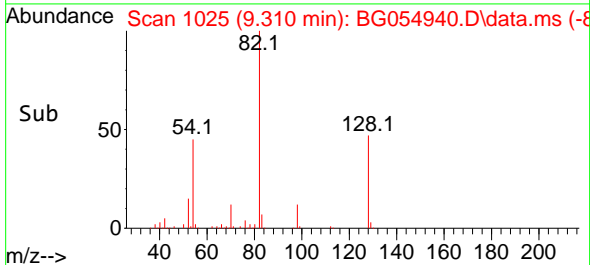
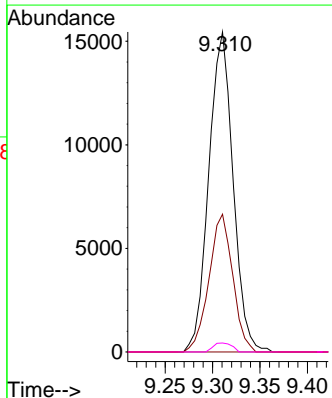
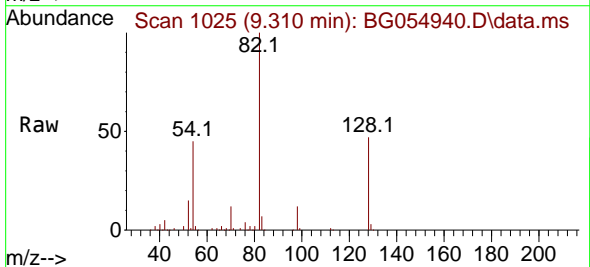
Ion	Ratio	Lower	Upper
99	100		
42	14.9	14.6	22.0
71	29.5	24.6	37.0

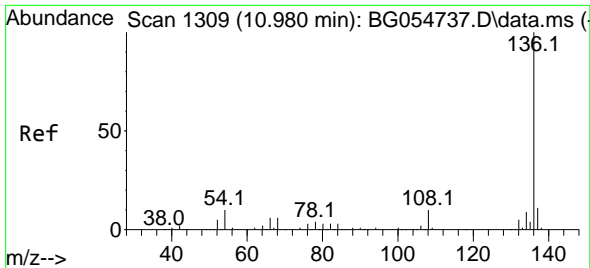


#19
 n-Nitroso-di-n-propylamine
 Concen: 13.831 ng
 RT: 9.310 min Scan# 1025
 Delta R.T. 0.371 min
 Lab File: BG054940.D
 Acq: 14 Sep 2022 11:33

Tgt Ion: 70 Resp: 27549

Ion	Ratio	Lower	Upper
70	100		
42	43.0	46.6	69.8#
101	0.0	7.7	11.5#
130	2.8	13.9	20.9#



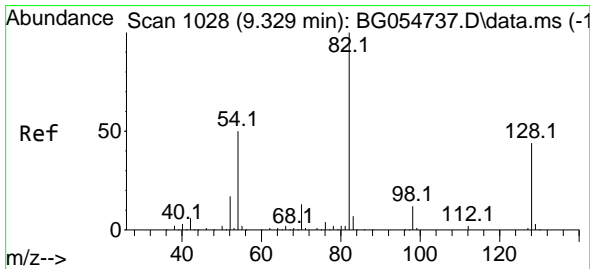
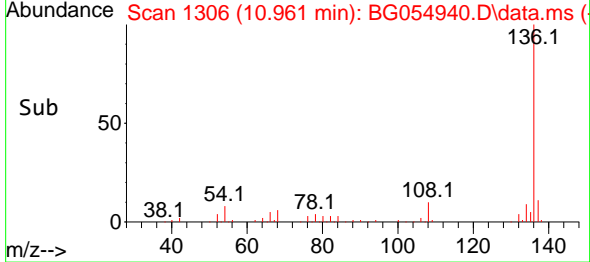
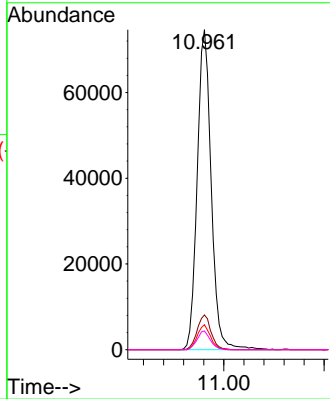
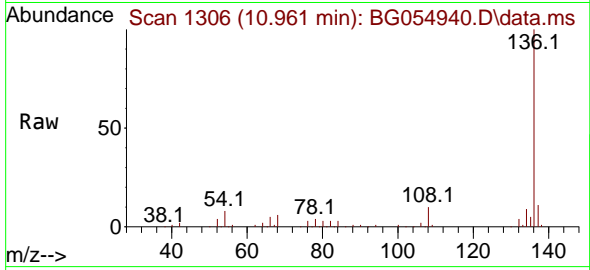


#21
 Naphthalene-d8
 Concen: 20.000 ng
 RT: 10.961 min Scan# 11
 Delta R.T. 0.000 min
 Lab File: BG054940.D
 Acq: 14 Sep 2022 11:33

Instrument : BNA_G
 ClientSampleId : PB147612BL

Tgt Ion:136 Resp: 144145

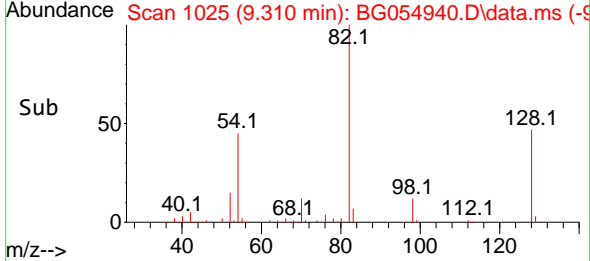
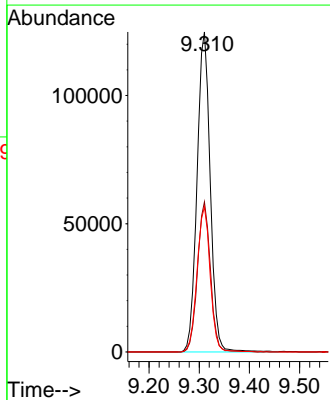
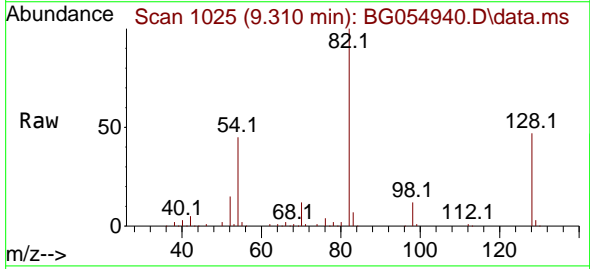
Ion	Ratio	Lower	Upper
136	100		
137	10.9	9.2	13.8
54	7.8	7.7	11.5
68	5.8	5.6	8.4

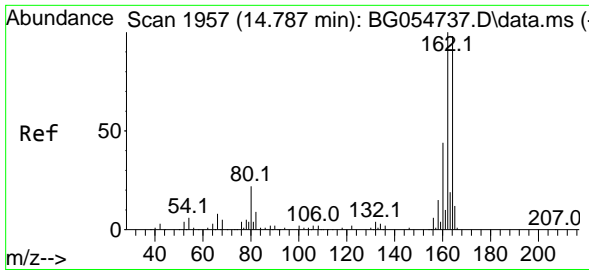


#23
 Nitrobenzene-d5
 Concen: 82.895 ng
 RT: 9.310 min Scan# 1025
 Delta R.T. 0.000 min
 Lab File: BG054940.D
 Acq: 14 Sep 2022 11:33

Tgt Ion: 82 Resp: 227614

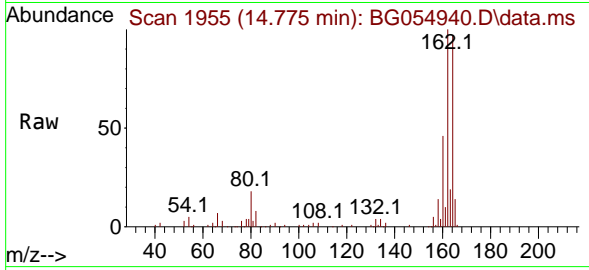
Ion	Ratio	Lower	Upper
82	100		
128	46.9	32.2	48.2
54	45.4	41.4	62.0



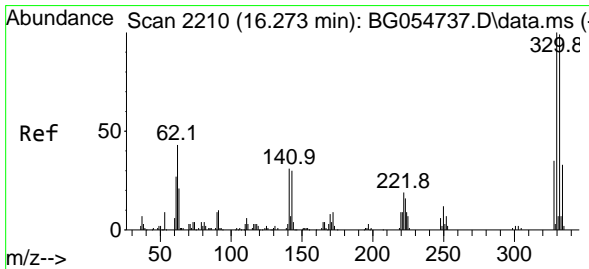
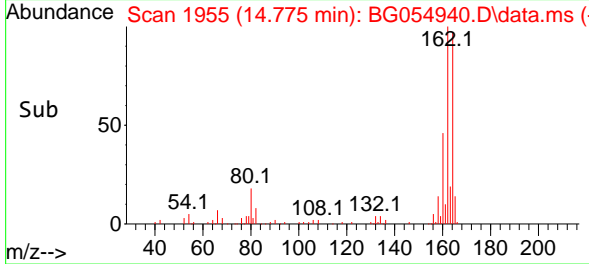
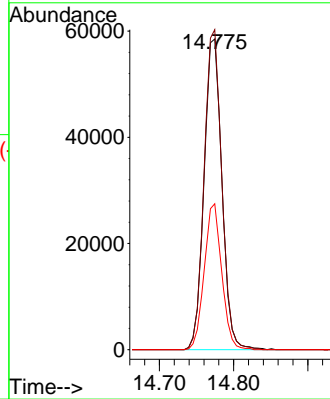


#39
 Acenaphthene-d10
 Concen: 20.000 ng
 RT: 14.775 min Scan# 1955
 Delta R.T. 0.000 min
 Lab File: BG054940.D
 Acq: 14 Sep 2022 11:33

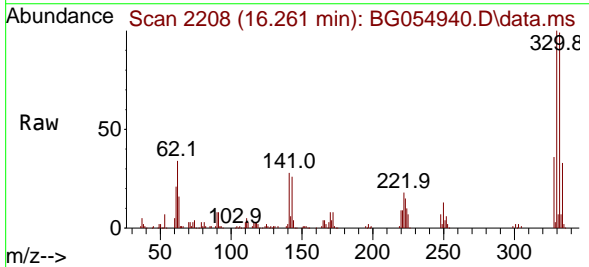
Instrument :
 BNA_G
 ClientSampleId :
 PB147612BL



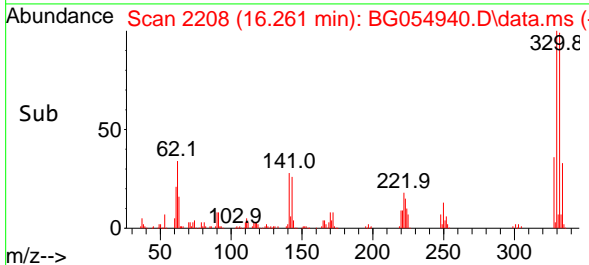
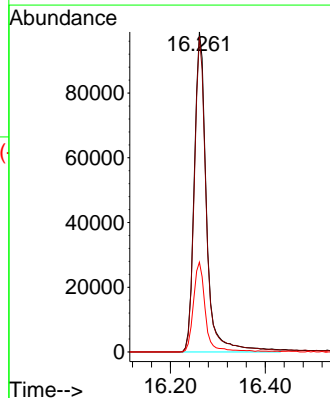
Tgt Ion:164 Resp: 97855
 Ion Ratio Lower Upper
 164 100
 162 103.0 83.0 124.4
 160 47.0 38.0 57.0

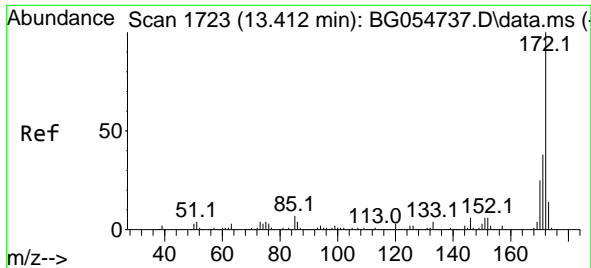


#42
 2,4,6-Tribromophenol
 Concen: 145.534 ng
 RT: 16.261 min Scan# 2208
 Delta R.T. 0.000 min
 Lab File: BG054940.D
 Acq: 14 Sep 2022 11:33



Tgt Ion:330 Resp: 177953
 Ion Ratio Lower Upper
 330 100
 332 97.5 79.8 119.6
 141 27.2 26.8 40.2





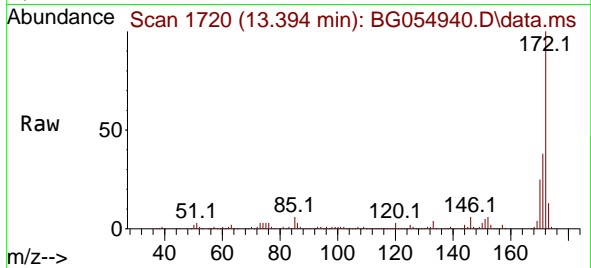
#45
 2-Fluorobiphenyl
 Concen: 91.153 ng
 RT: 13.394 min Scan# 11
 Delta R.T. 0.000 min
 Lab File: BG054940.D
 Acq: 14 Sep 2022 11:33

Instrument :

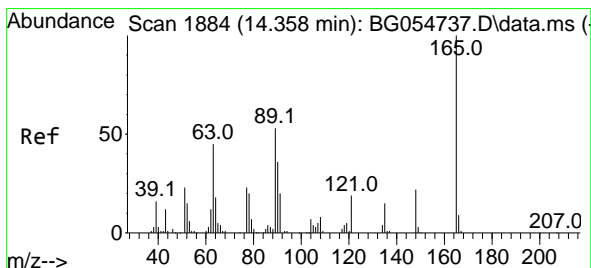
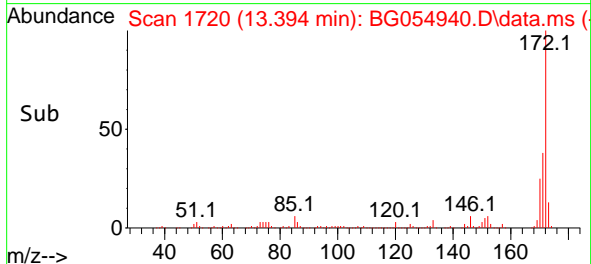
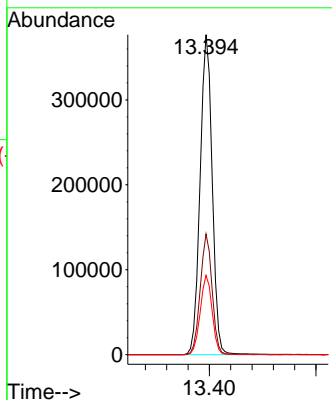
BNA_G

ClientSampleId :

PB147612BL

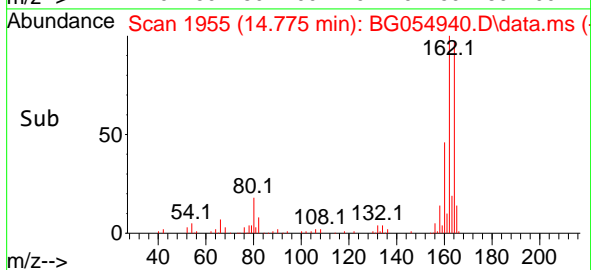
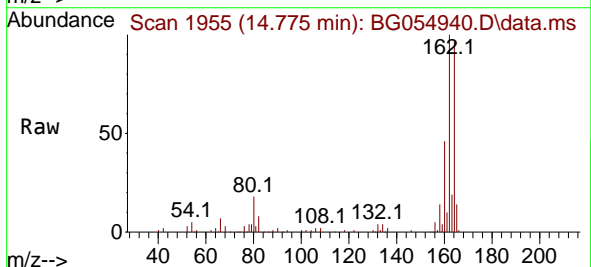
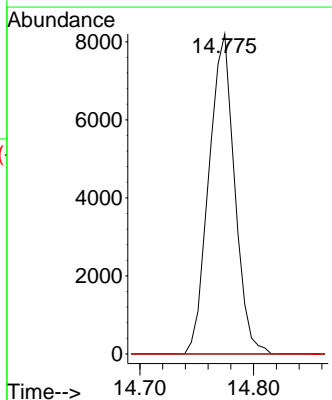


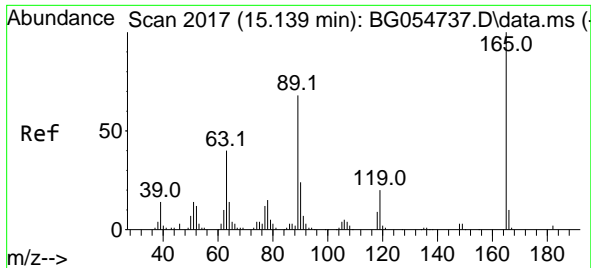
Tgt Ion:172 Resp: 593461
 Ion Ratio Lower Upper
 172 100
 171 37.7 31.2 46.8
 170 24.8 20.6 30.8



#51
 2,6-Dinitrotoluene
 Concen: 8.359 ng
 RT: 14.775 min Scan# 1955
 Delta R.T. 0.429 min
 Lab File: BG054940.D
 Acq: 14 Sep 2022 11:33

Tgt Ion:165 Resp: 12889
 Ion Ratio Lower Upper
 165 100
 63 0.0 46.0 69.0#
 89 0.0 50.3 75.5#

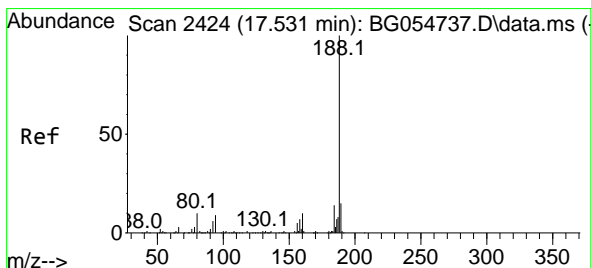
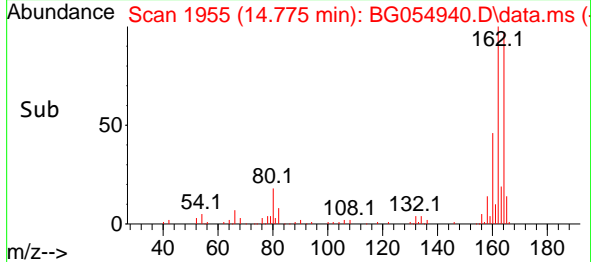
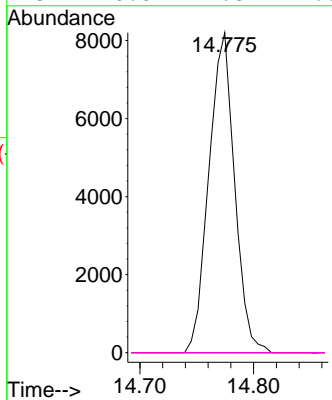
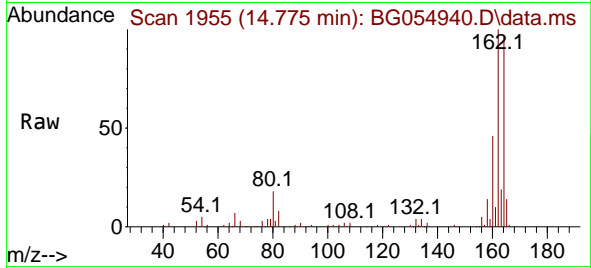




#57
 2,4-Dinitrotoluene
 Concen: 6.043 ng
 RT: 14.775 min Scan# 1955
 Delta R.T. -0.364 min
 Lab File: BG054940.D
 Acq: 14 Sep 2022 11:33

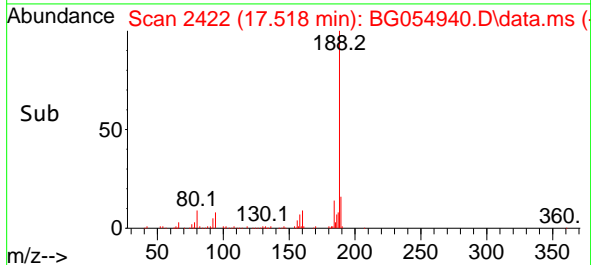
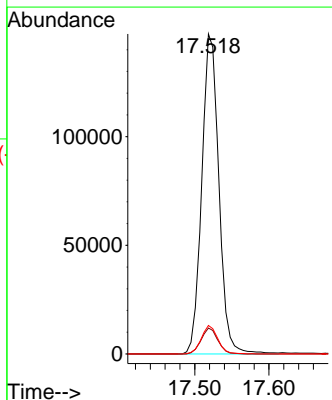
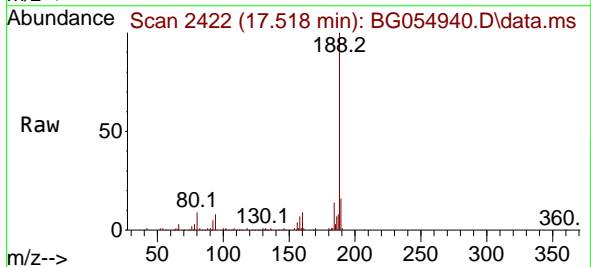
Instrument : BNA_G
 ClientSampleId : PB147612BL

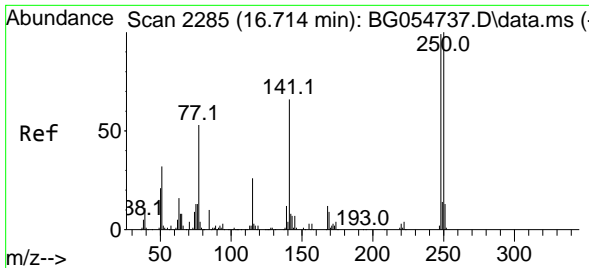
Tgt Ion	Resp	Lower	Upper
165	12889		
63	0.0	36.8	55.2#
89	0.0	64.3	96.5#
182	0.0	1.8	2.6#



#64
 Phenanthrene-d10
 Concen: 20.000 ng
 RT: 17.518 min Scan# 2422
 Delta R.T. -0.005 min
 Lab File: BG054940.D
 Acq: 14 Sep 2022 11:33

Tgt Ion	Resp	Lower	Upper
188	236454		
94	8.1	7.0	10.4
80	8.9	7.9	11.9

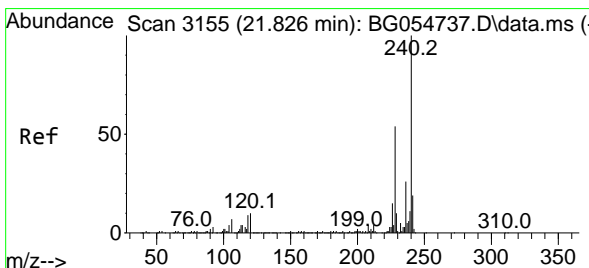
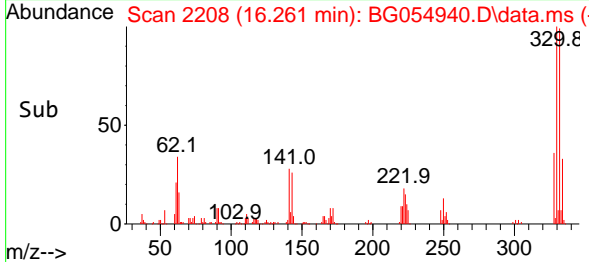
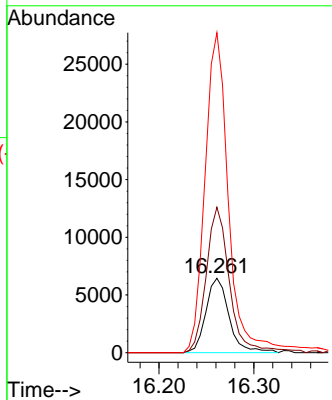
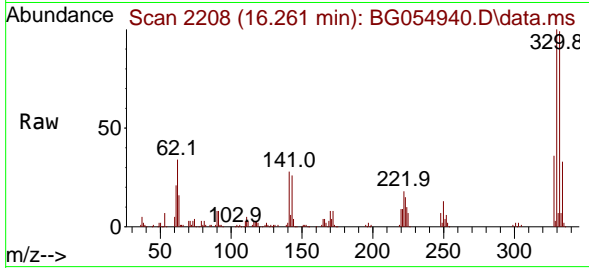




#67
 4-Bromophenyl-phenylether
 Concen: 4.221 ng
 RT: 16.261 min Scan# 21
 Delta R.T. -0.440 min
 Lab File: BG054940.D
 Acq: 14 Sep 2022 11:33

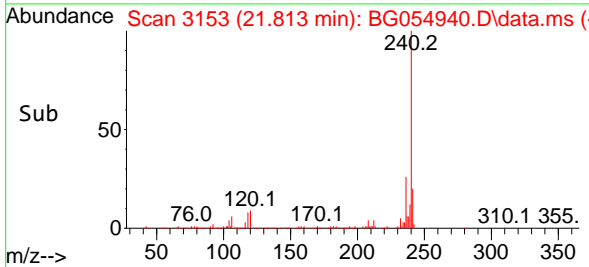
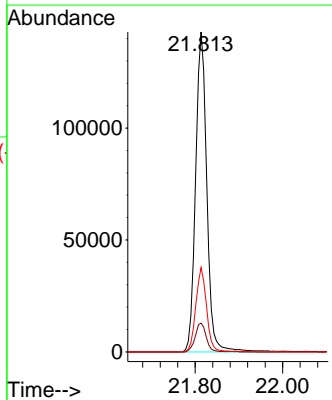
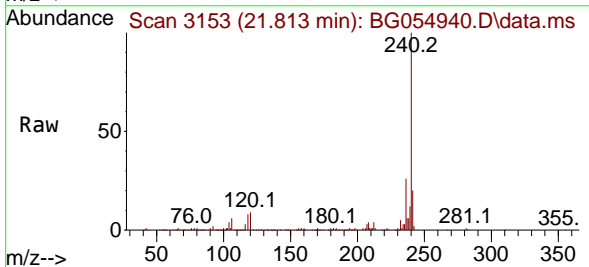
Instrument :
 BNA_G
 ClientSampleId :
 PB147612BL

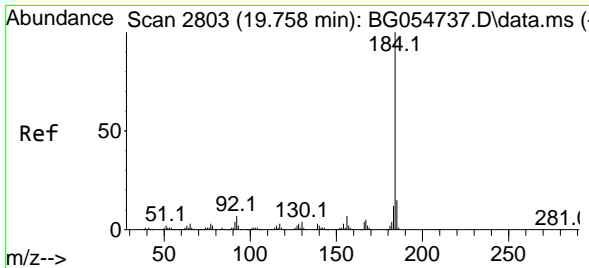
Tgt Ion:248 Resp: 10957
 Ion Ratio Lower Upper
 248 100
 250 195.4 78.8 118.2#
 141 429.7 51.9 77.9#



#76
 Chrysene-d12
 Concen: 20.000 ng
 RT: 21.813 min Scan# 3153
 Delta R.T. -0.005 min
 Lab File: BG054940.D
 Acq: 14 Sep 2022 11:33

Tgt Ion:240 Resp: 255678
 Ion Ratio Lower Upper
 240 100
 120 9.0 8.2 12.4
 236 26.4 21.2 31.8

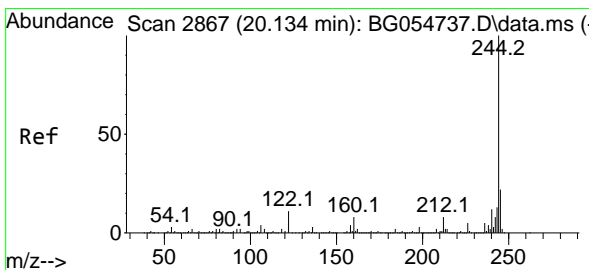
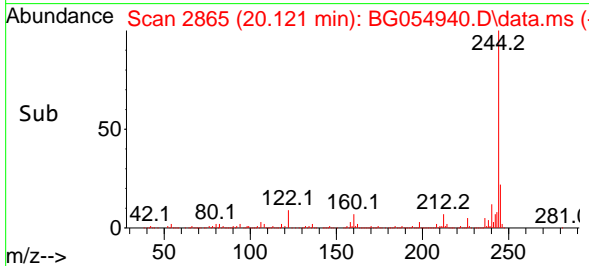
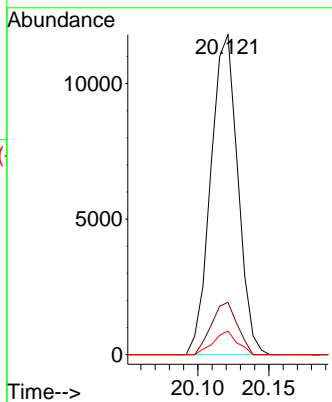
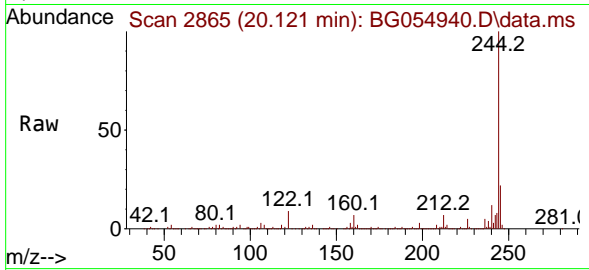




#77
 Benzidine
 Concen: 2.466 ng
 RT: 20.121 min Scan# 2865
 Delta R.T. 0.376 min
 Lab File: BG054940.D
 Acq: 14 Sep 2022 11:33

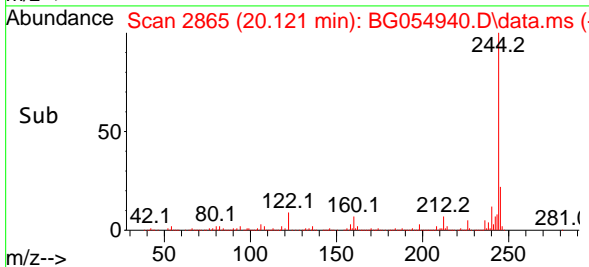
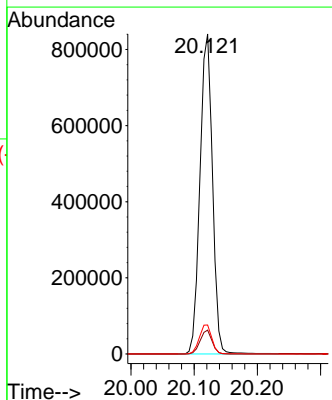
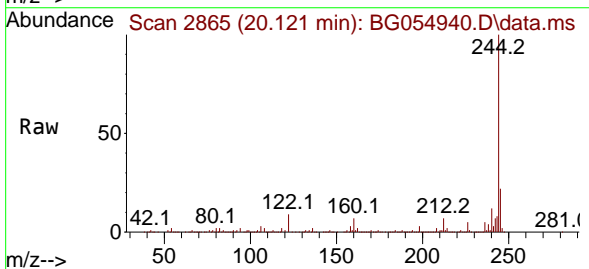
Instrument :
 BNA_G
 ClientSampleId :
 PB147612BL

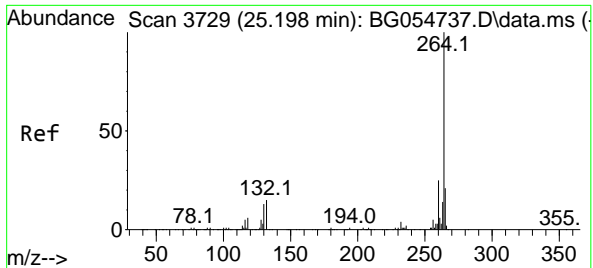
Tgt Ion:184 Resp: 15615
 Ion Ratio Lower Upper
 184 100
 185 16.4 11.4 17.0
 183 7.4 9.8 14.8#



#79
 Terphenyl-d14
 Concen: 89.518 ng
 RT: 20.121 min Scan# 2865
 Delta R.T. 0.000 min
 Lab File: BG054940.D
 Acq: 14 Sep 2022 11:33

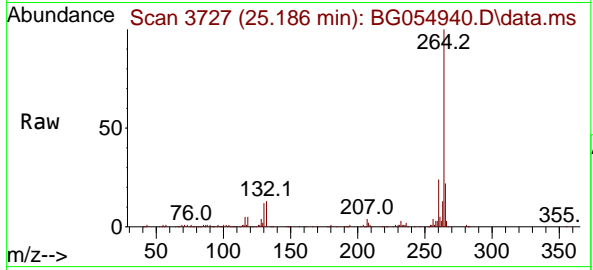
Tgt Ion:244 Resp: 1155136
 Ion Ratio Lower Upper
 244 100
 212 7.5 6.2 9.2
 122 9.0 9.0 13.6#





#86
 Perylene-d12
 Concen: 20.000 ng
 RT: 25.186 min Scan# 31
 Delta R.T. 0.000 min
 Lab File: BG054940.D
 Acq: 14 Sep 2022 11:33

Instrument :
 BNA_G
 ClientSampleId :
 PB147612BL



Tgt Ion:264 Resp: 264043

Ion	Ratio	Lower	Upper
264	100		
260	24.0	19.9	29.9
265	21.7	16.9	25.3

