

Data Path : Z:\svoasrv\HPCHEM1\BNA_G\Data\BG092521\
 Data File : BG050268.D
 Acq On : 25 Sep 2021 18:00
 Operator : CG/JU
 Sample : SSTD08039
 Misc :
 ALS Vial : 6 Sample Multiplier: 1

Instrument :
 BNA_G
 ClientSampleId :
 SSTD080437

Quant Time: Sep 27 02:05:22 2021
 Quant Method : Z:\SVOASRV\HPCHEM1\BNA_G\METHODS\SFAM-EPA-BG092521.M
 Quant Title : SVOA CALIBRATION
 QLast Update : Mon Sep 27 01:56:44 2021
 Response via : Initial Calibration

Compound	R.T.	QIon	Response	Conc	Units	Dev(Min)
Internal Standards						
1) 1,4-Dichlorobenzene-d4	8.291	152	37888	20.000	ng/ul	0.00
20) Naphthalene-d8	11.123	136	152388	20.000	ng/ul	# 0.00
38) Acenaphthene-d10	14.907	164	110420	20.000	ng/ul	0.00
64) Phenanthrene-d10	17.651	188	264457	20.000	ng/ul	# 0.00
79) Chrysene-d12	21.963	240	235210	20.000	ng/ul	0.00
88) Perylene-d12	25.412	264	239632	20.000	ng/ul	0.01
System Monitoring Compounds						
3) 1,4-Dioxane-d8	3.661	96	23445	31.909	ng/uL	0.00
4) Pyridine-d5	4.096	84	188561	85.201	ng/ul	0.00
7) Phenol-d5	7.427	99	242028	75.227	ng/ul	0.00
9) Bis-(2-Chloroethyl)eth...	7.609	67	136884	76.582	ng/ul	0.00
11) 2-Chlorophenol-d4	7.821	132	176542	73.335	ng/ul	0.00
15) 4-Methylphenol-d8	8.990	113	190706	75.265	ng/ul	0.00
21) Nitrobenzene-d5	9.466	128	83198	70.421	ng/ul	0.00
24) 2-Nitrophenol-d4	10.195	143	95505	67.889	ng/ul	0.00
28) 2,4-Dichlorophenol-d3	10.729	165	195200	77.796	ng/ul	0.00
31) 4-Chloroaniline-d4	11.252	131	250640	73.389	ng/ul	0.00
46) Dimethylphthalate-d6	14.313	166	602858	71.339	ng/ul	0.00
49) Acenaphthylene-d8	14.607	160	739015	74.585	ng/ul	0.00
54) 4-Nitrophenol-d4	15.083	143	107954	88.296	ng/ul	0.01
60) Fluorene-d10	15.900	176	540245	75.402	ng/ul	0.00
65) 4,6-Dinitro-2-methylph...	16.005	200	102197	60.067	ng/ul	0.01
73) Anthracene-d10	17.756	188	848835	71.478	ng/ul	0.00
81) Pyrene-d10	20.024	212	979513	77.063	ng/ul	0.00
92) Benzo(a)pyrene-d12	25.183	264	966579	76.030	ng/ul	0.02
Target Compounds						
2) 1,4-Dioxane	3.696	88	27484	30.684	ng/uL#	90
5) Pyridine	4.119	79	189263	79.126	ng/ul	95
6) Benzaldehyde	7.427	77	143766	77.651	ng/ul	97
8) Phenol	7.457	94	241321	74.260	ng/ul	97
10) Bis(2-Chloroethyl)ether	7.703	93	176938	78.873	ng/ul	93
12) 2-Chlorophenol	7.856	128	178316	74.961	ng/ul#	86
13) 2-Methylphenol	8.726	108	188855	75.328	ng/ul	98
14) 2,2'-oxybis(1-Chloropr...	8.820	45	233928	99.442	ng/ul#	92
16) Acetophenone	9.131	105	279462	67.630	ng/ul	99
17) N-Nitroso-di-n-propyla...	9.114	70	156272	75.316	ng/ul	96
18) 4-Methylphenol	9.061	108	194536	72.126	ng/ul	88
19) Hexachloroethane	9.390	117	77625	74.564	ng/ul#	86
22) Nitrobenzene	9.513	77	235280	73.496	ng/ul	100
23) Isophorone	10.048	82	450105	78.914	ng/ul	96
25) 2-Nitrophenol	10.224	139	100069	73.165	ng/ul#	87
26) 2,4-Dimethylphenol	10.265	107	225892	74.316	ng/ul#	85
27) Bis(2-Chloroethoxy)met...	10.512	93	244037	82.855	ng/ul	98
29) 2,4-Dichlorophenol	10.759	162	189370	82.228	ng/ul	97
30) Naphthalene	11.170	128	608983	79.953	ng/ul	98
32) 4-Chloroaniline	11.276	127	246205	74.856	ng/ul	90
33) Hexachlorobutadiene	11.446	225	153601	82.447	ng/ul	95
34) Caprolactam	12.151	113	7663	9.499	ng/ul	89
35) 4-Chloro-3-methylphenol	12.369	107	208995	75.933	ng/ul	99
36) 2-Methylnaphthalene	12.756	142	418808	73.969	ng/ul	95

Data Path : Z:\svoasrv\HPCHEM1\BNA_G\Data\BG092521\
 Data File : BG050268.D
 Acq On : 25 Sep 2021 18:00
 Operator : CG/JU
 Sample : SSTD08039
 Misc :
 ALS Vial : 6 Sample Multiplier: 1

Instrument :
 BNA_G
 ClientSampleId :
 SSTD080437

Quant Time: Sep 27 02:05:22 2021
 Quant Method : Z:\SVOASRV\HPCHEM1\BNA_G\METHODS\SFAM-EPA-BG092521.M
 Quant Title : SVOA CALIBRATION
 QLast Update : Mon Sep 27 01:56:44 2021
 Response via : Initial Calibration

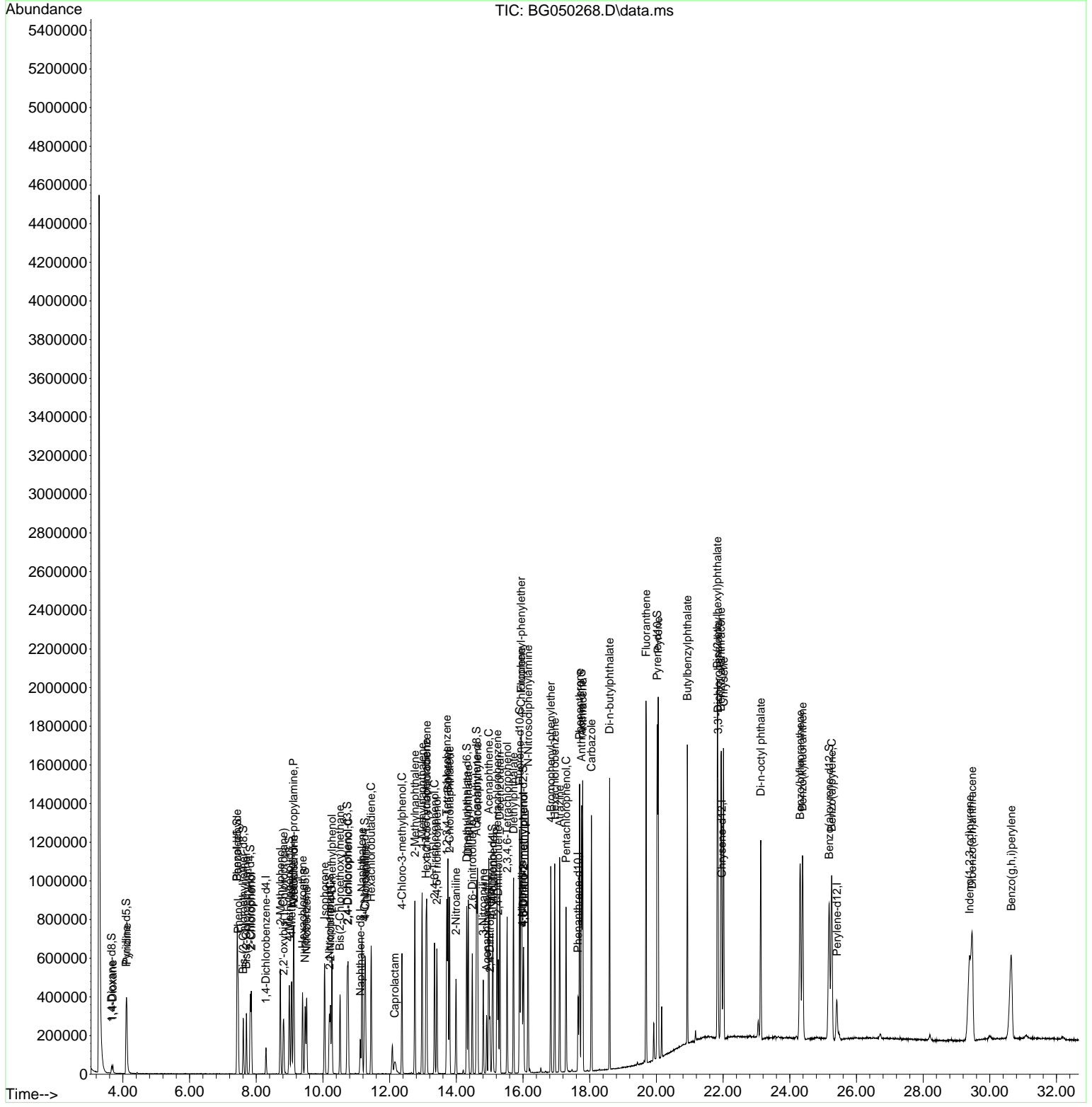
Compound	R.T.	QIon	Response	Conc	Units	Dev(Min)
37) 1-Methylnaphthalene	12.974	142	425131	74.387	ng/ul	99
39) 1,2,4,5-Tetrachloroben...	13.115	216	269522	83.103	ng/ul#	97
40) Hexachlorocyclopentadiene	13.091	237	195958	135.005	ng/ul	95
41) 2,4,6-Trichlorophenol	13.344	196	176014	85.163	ng/ul	91
42) 2,4,5-Trichlorophenol	13.414	196	182120	84.076	ng/ul	92
43) 1,1'-Biphenyl	13.749	154	565336	73.284	ng/ul#	95
44) 2-Chloronaphthalene	13.796	162	453207	73.140	ng/ul	97
45) 2-Nitroaniline	13.990	65	139141	66.138	ng/ul	99
47) Dimethylphthalate	14.360	163	582736	69.678	ng/ul	100
48) 2,6-Dinitrotoluene	14.478	165	117739	68.189	ng/ul	89
50) Acenaphthylene	14.636	152	722907	79.827	ng/ul	95
51) 3-Nitroaniline	14.807	138	112551	67.552	ng/ul	91
52) Acenaphthene	14.971	153	493351	75.101	ng/ul	95
53) 2,4-Dinitrophenol	15.007	184	68010	77.120	ng/ul#	69
55) 4-Nitrophenol	15.101	109	110666	71.390	ng/ul#	79
56) Dibenzofuran	15.306	168	716001	78.705	ng/ul	96
57) 2,4-Dinitrotoluene	15.259	165	163249	65.729	ng/ul#	99
58) 2,3,4,6-Tetrachlorophenol	15.524	232	172530	96.117	ng/ul	90
59) Diethylphthalate	15.718	149	616689	72.081	ng/ul	95
61) Fluorene	15.953	166	557942	72.694	ng/ul	96
62) 4-Chlorophenyl-phenyle...	15.941	204	320327	78.880	ng/ul	89
63) 4-Nitroaniline	15.976	138	112141	67.446	ng/ul	87
66) 4,6-Dinitro-2-methylph...	16.023	198	101716	65.958	ng/ul#	90
67) N-Nitrosodiphenylamine	16.152	169	513800	73.795	ng/ul	96
68) 4-Bromophenyl-phenylether	16.834	248	221181	75.604	ng/ul	95
69) Hexachlorobenzene	16.951	284	240076	71.067	ng/ul	95
70) Atrazine	17.104	200	236239	76.375	ng/ul	95
71) Pentachlorophenol	17.292	266	165126	115.434	ng/ul	96
72) Phenanthrene	17.698	178	993897	75.387	ng/ul	98
74) Anthracene	17.792	178	956096	71.563	ng/ul#	92
75) 1,2,3,4-Tetrachloroben...	13.714	216	296527	83.574	ng/uL	92
76) Pentachlorobenzene	15.224	250	285248	75.872	ng/uL	96
77) Carbazole	18.050	167	888567	74.743	ng/ul	98
78) Di-n-butylphthalate	18.597	149	1030472	67.774	ng/ul	99
80) Fluoranthene	19.689	202	1209244	77.097	ng/ul#	91
82) Pyrene	20.054	202	1167228	75.100	ng/ul#	91
83) Butylbenzylphthalate	20.929	149	438562	71.504	ng/ul	98
84) 3,3'-Dichlorobenzidine	21.846	252	397080	71.217	ng/ul#	98
85) Benzo(a)anthracene	21.940	228	1094856	74.704	ng/ul	95
86) Bis(2-ethylhexyl)phtha...	21.828	149	598946	71.107	ng/ul	96
87) Chrysene	22.016	228	1049543	75.756	ng/ul	95
89) Di-n-octyl phthalate	23.132	149	947078	66.622	ng/ul	100
90) Benzo(b)fluoranthene	24.313	252	1091791	71.227	ng/ul#	99
91) Benzo(k)fluoranthene	24.384	252	1010439	69.349	ng/ul#	97
93) Benzo(a)pyrene	25.259	252	1037434	77.932	ng/ul	96
94) Indeno(1,2,3-cd)pyrene	29.390	276	1187396	67.619	ng/ul#	96
95) Dibenzo(a,h)anthracene	29.472	278	1016158	69.125	ng/ul#	97
96) Benzo(g,h,i)perylene	30.641	276	1030607	69.810	ng/ul	96

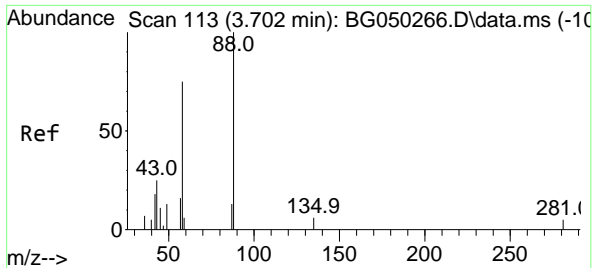
(#) = qualifier out of range (m) = manual integration (+) = signals summed

Data Path : Z:\svoasrv\HPCHEM1\BNA_G\Data\BG092521\
 Data File : BG050268.D
 Acq On : 25 Sep 2021 18:00
 Operator : CG/JU
 Sample : SSTD08039
 Misc :
 ALS Vial : 6 Sample Multiplier: 1

Instrument :
 BNA_G
 Client Sampled :
 SSTD080437

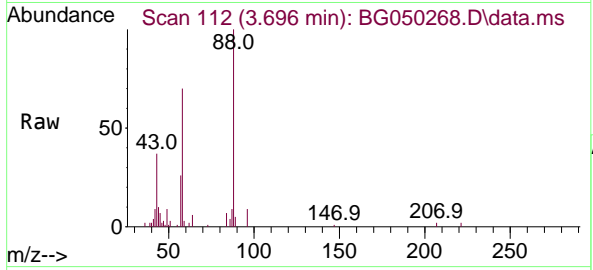
Quant Time: Sep 27 02:05:22 2021
 Quant Method : Z:\SVOASRV\HPCHEM1\BNA_G\METHODS\SFAM-EPA-BG092521.M
 Quant Title : SVOA CALIBRATION
 QLast Update : Mon Sep 27 01:56:44 2021
 Response via : Initial Calibration



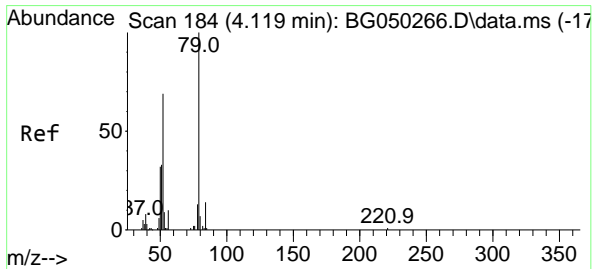
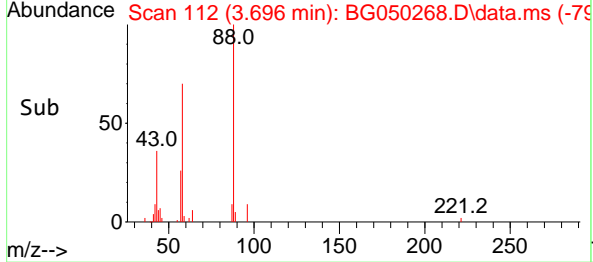
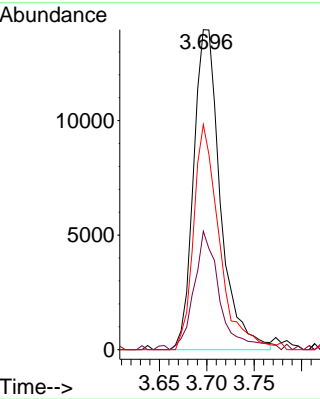


#2
 1,4-Dioxane
 Concen: 30.684 ng/uL
 RT: 3.696 min Scan# 112
 Delta R.T. -0.006 min
 Lab File: BG050268.D
 Acq: 25 Sep 2021 18:00

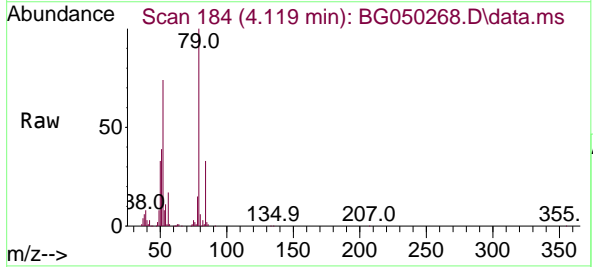
Instrument :
 BNA_G
 ClientSampleId :
 SSTD080437



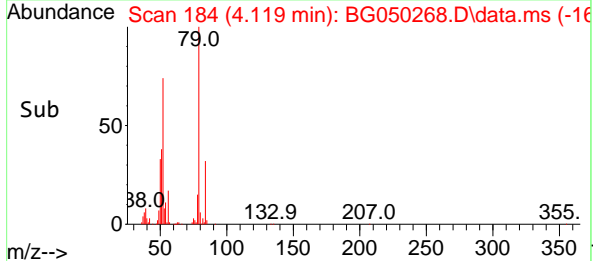
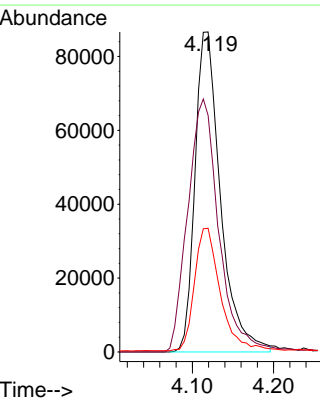
Tgt Ion: 88 Resp: 27484
 Ion Ratio Lower Upper
 88 100
 43 37.0 21.6 32.4#
 58 70.4 52.0 78.0

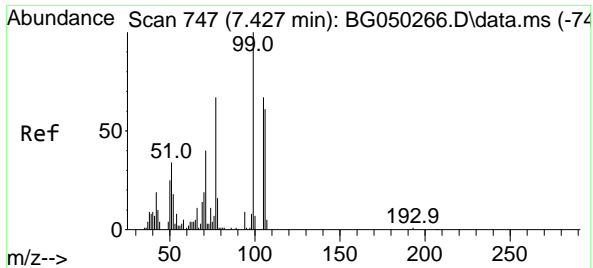


#5
 Pyridine
 Concen: 79.126 ng/uL
 RT: 4.119 min Scan# 184
 Delta R.T. 0.000 min
 Lab File: BG050268.D
 Acq: 25 Sep 2021 18:00



Tgt Ion: 79 Resp: 189263
 Ion Ratio Lower Upper
 79 100
 52 73.9 61.1 91.7
 51 38.6 34.8 52.2



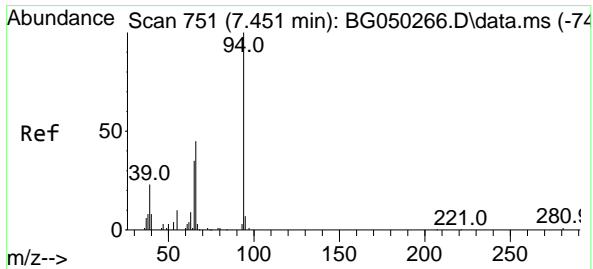
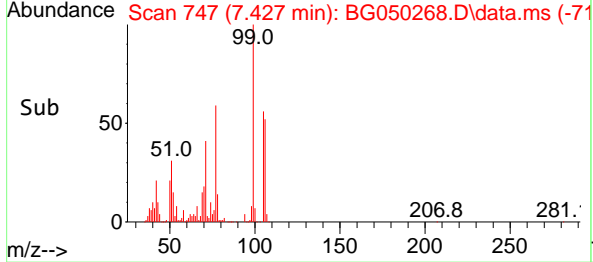
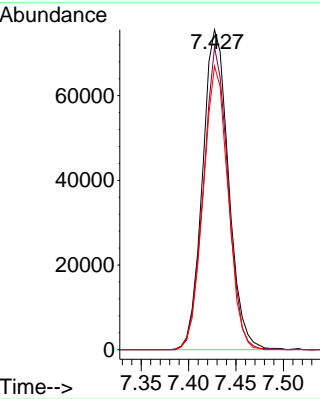
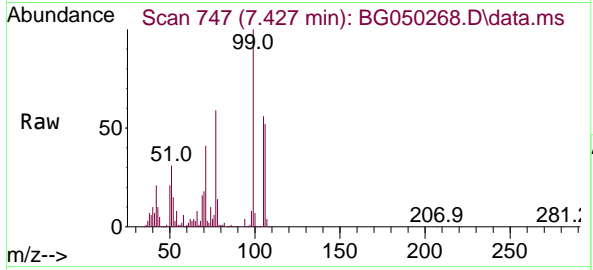


#6
Benzaldehyde
Concen: 77.651 ng/u1
RT: 7.427 min Scan# 747
Delta R.T. -0.000 min
Lab File: BG050268.D
Acq: 25 Sep 2021 18:00

Instrument :
BNA_G
ClientSampleId :
SSTD080437

Tgt Ion: 77 Resp: 143766

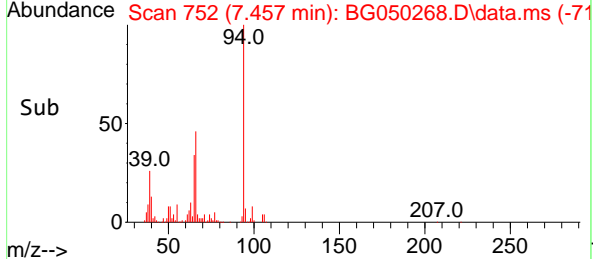
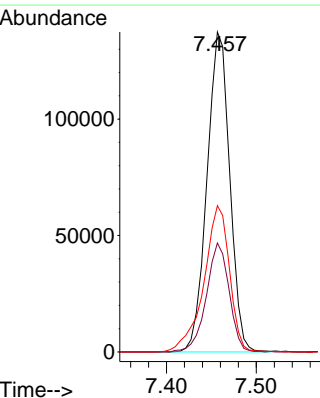
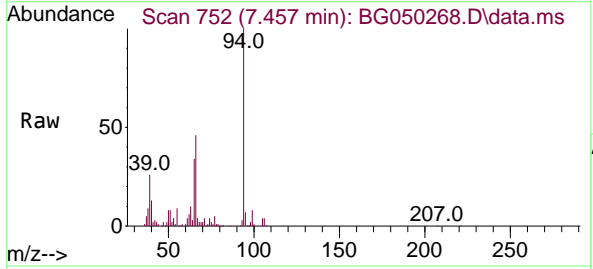
Ion	Ratio	Lower	Upper
77	100		
105	94.5	72.3	108.5
106	88.6	72.3	108.5

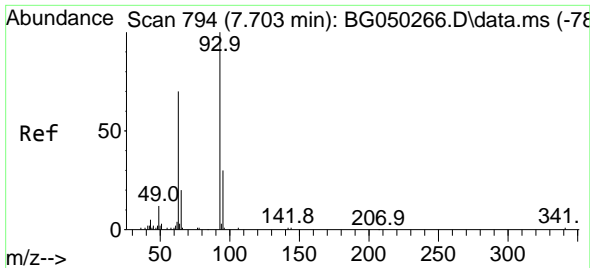


#8
Phenol
Concen: 74.260 ng/u1
RT: 7.457 min Scan# 752
Delta R.T. 0.006 min
Lab File: BG050268.D
Acq: 25 Sep 2021 18:00

Tgt Ion: 94 Resp: 241321

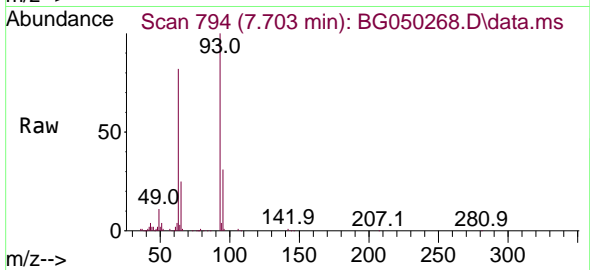
Ion	Ratio	Lower	Upper
94	100		
65	34.1	27.7	41.5
66	45.7	39.0	58.4





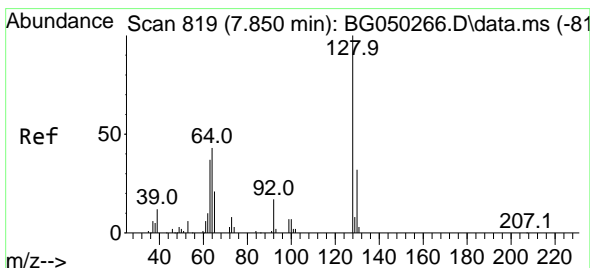
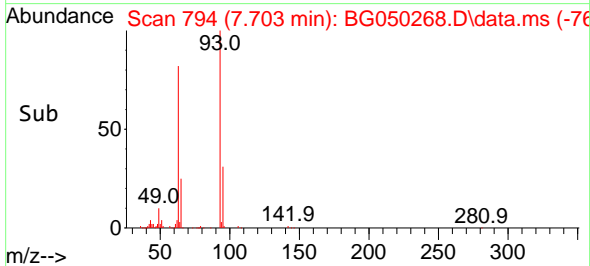
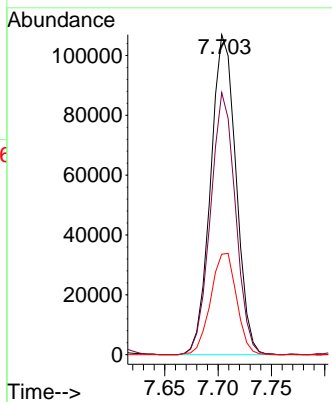
#10
 Bis(2-Chloroethyl)ether
 Concen: 78.873 ng/ul
 RT: 7.703 min Scan# 794
 Delta R.T. 0.000 min
 Lab File: BG050268.D
 Acq: 25 Sep 2021 18:00

Instrument :
 BNA_G
 ClientSampleId :
 SSTD080437

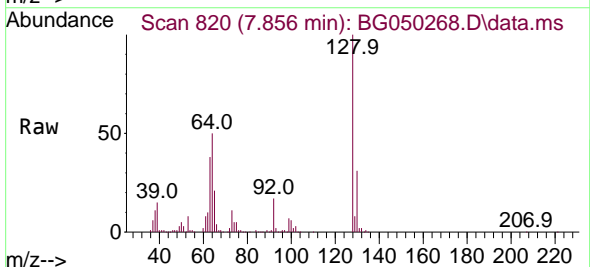


Tgt Ion: 93 Resp: 176938

Ion	Ratio	Lower	Upper
93	100		
63	81.9	59.9	89.9
95	31.4	27.6	41.4

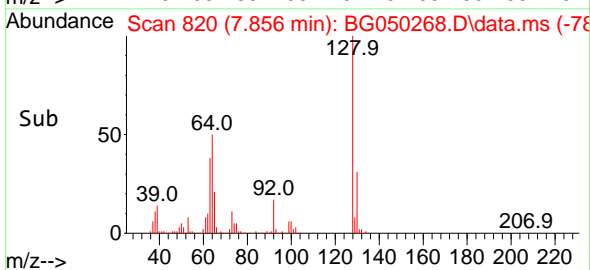
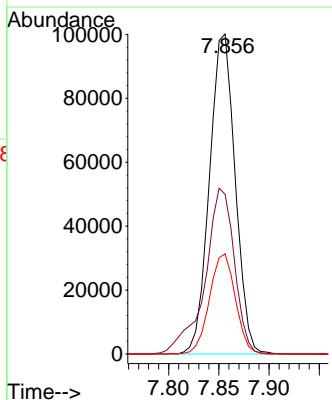


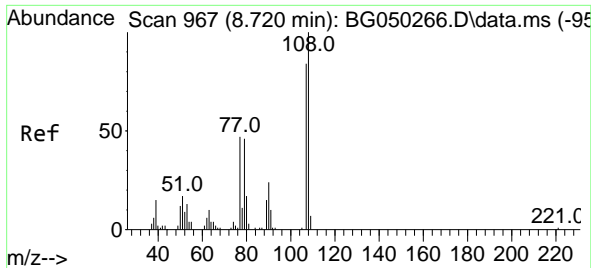
#12
 2-Chlorophenol
 Concen: 74.961 ng/ul
 RT: 7.856 min Scan# 820
 Delta R.T. 0.006 min
 Lab File: BG050268.D
 Acq: 25 Sep 2021 18:00



Tgt Ion: 128 Resp: 178316

Ion	Ratio	Lower	Upper
128	100		
64	49.9	28.0	42.0
130	31.3	24.4	36.6

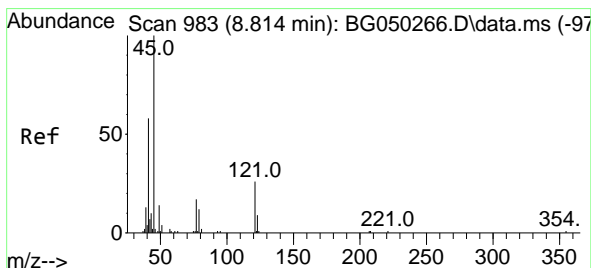
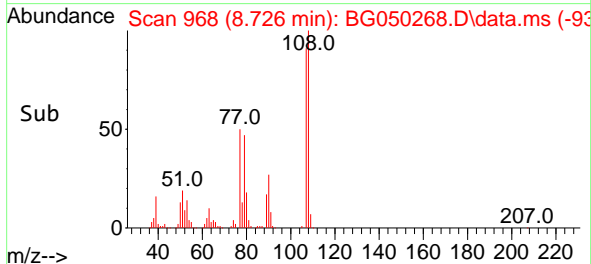
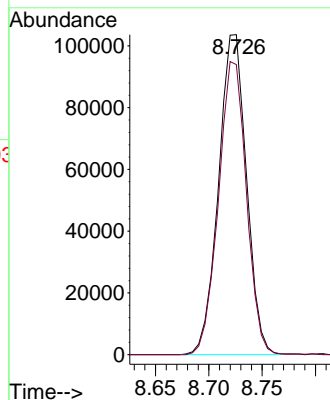
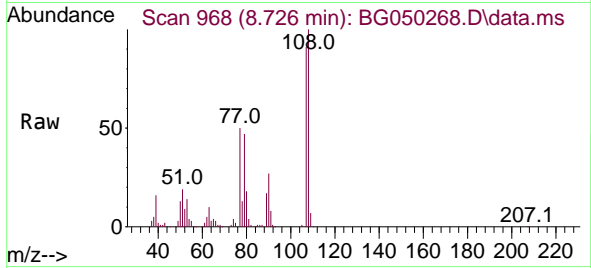




#13
 2-Methylphenol
 Concen: 75.328 ng/ul
 RT: 8.726 min Scan# 968
 Delta R.T. 0.006 min
 Lab File: BG050268.D
 Acq: 25 Sep 2021 18:00

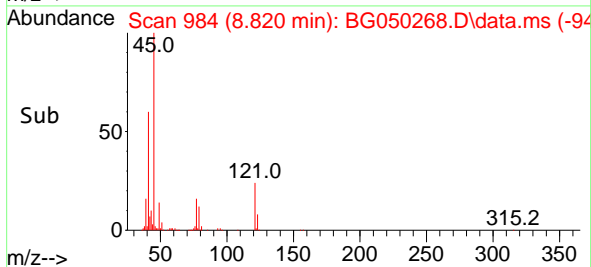
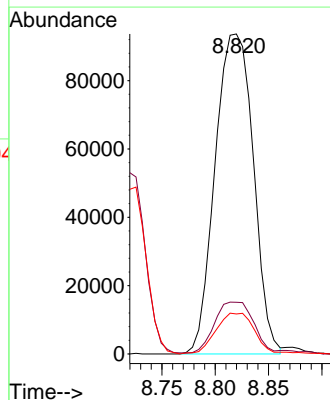
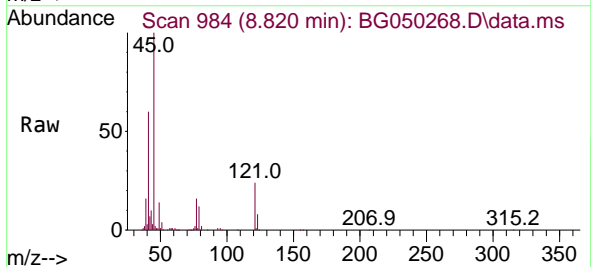
Instrument :
 BNA_G
 ClientSampled :
 SSTD080437

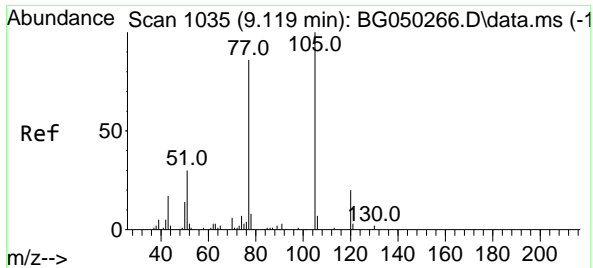
Tgt Ion:108 Resp: 188855
 Ion Ratio Lower Upper
 108 100
 107 90.7 71.0 106.4



#14
 2,2'-oxybis(1-Chloropropane)
 Concen: 99.442 ng/ul
 RT: 8.820 min Scan# 984
 Delta R.T. 0.006 min
 Lab File: BG050268.D
 Acq: 25 Sep 2021 18:00

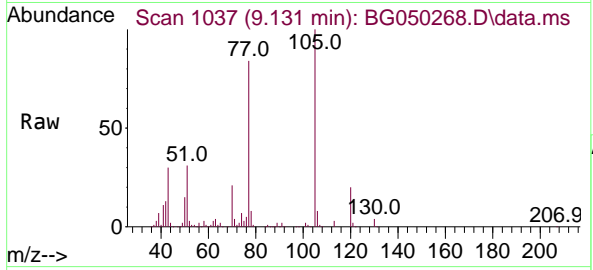
Tgt Ion: 45 Resp: 233928
 Ion Ratio Lower Upper
 45 100
 77 16.2 16.9 25.3#
 79 12.5 11.0 16.4





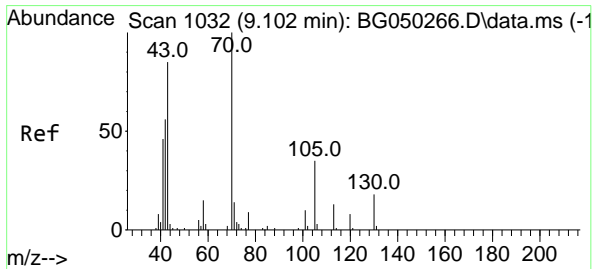
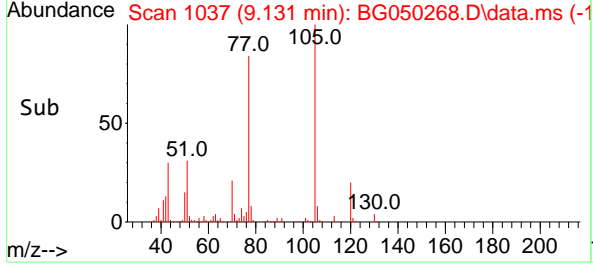
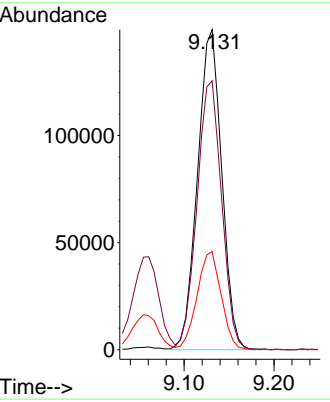
#16
 Acetophenone
 Concen: 67.630 ng/ul
 RT: 9.131 min Scan# 1037
 Delta R.T. 0.012 min
 Lab File: BG050268.D
 Acq: 25 Sep 2021 18:00

Instrument :
 BNA_G
ClientSampled :
 SSTD080437



Tgt Ion:105 Resp: 279462

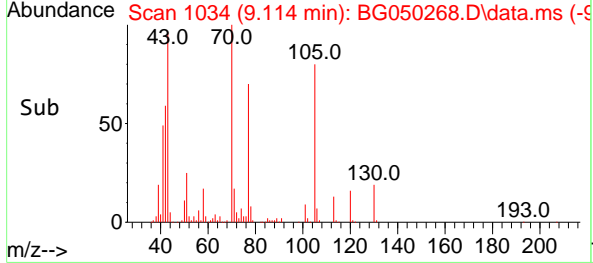
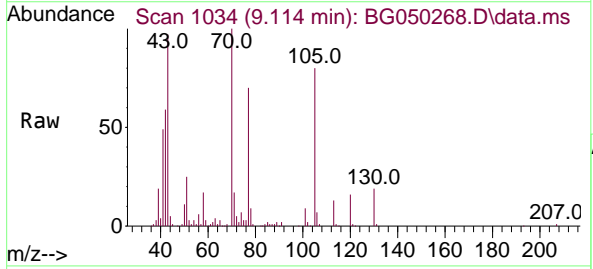
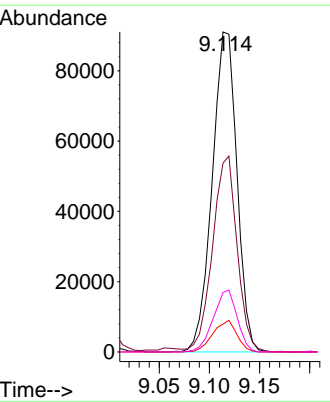
Ion	Ratio	Lower	Upper
105	100		
77	84.0	67.7	101.5
51	30.6	25.3	37.9

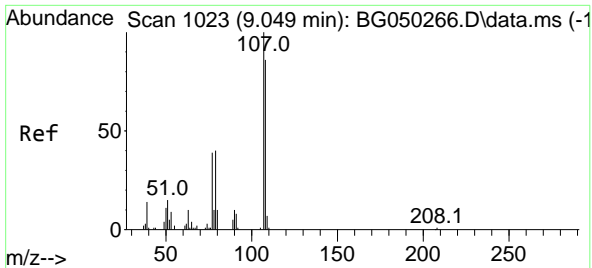


#17
 N-Nitroso-di-n-propylamine
 Concen: 75.316 ng/ul
 RT: 9.114 min Scan# 1034
 Delta R.T. 0.012 min
 Lab File: BG050268.D
 Acq: 25 Sep 2021 18:00

Tgt Ion: 70 Resp: 156272

Ion	Ratio	Lower	Upper
70	100		
42	59.0	44.2	66.4
101	8.7	7.8	11.8
130	18.5	15.3	22.9

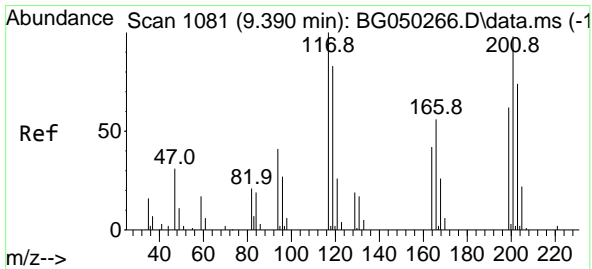
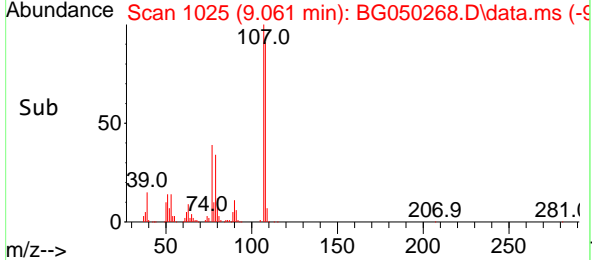
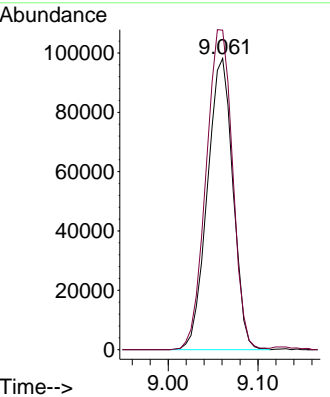
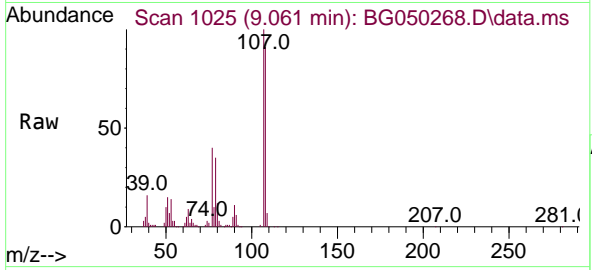




#18
 4-Methylphenol
 Concen: 72.126 ng/uI
 RT: 9.061 min Scan# 1025
 Delta R.T. 0.012 min
 Lab File: BG050268.D
 Acq: 25 Sep 2021 18:00

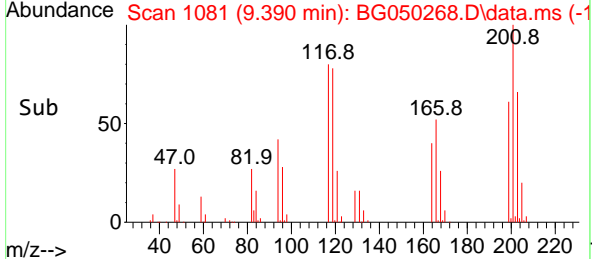
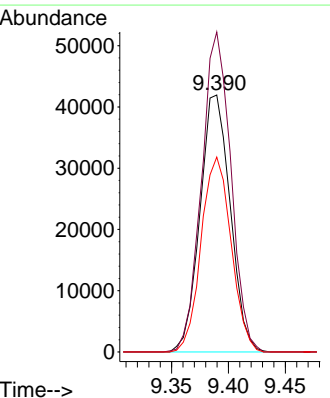
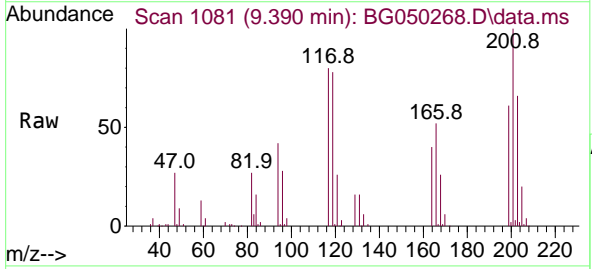
Instrument :
 BNA_G
 ClientSampled :
 SSTD080437

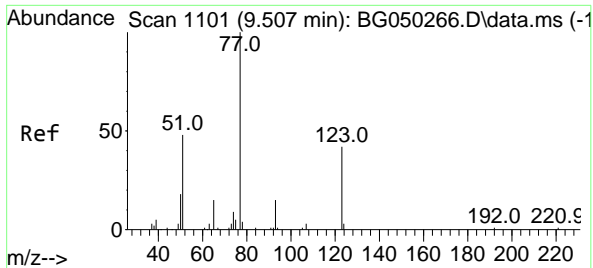
Tgt Ion:108 Resp: 194536
 Ion Ratio Lower Upper
 108 100
 107 109.7 78.3 117.5



#19
 Hexachloroethane
 Concen: 74.564 ng/uI
 RT: 9.390 min Scan# 1081
 Delta R.T. 0.000 min
 Lab File: BG050268.D
 Acq: 25 Sep 2021 18:00

Tgt Ion:117 Resp: 77625
 Ion Ratio Lower Upper
 117 100
 201 124.5 89.3 133.9
 199 75.8 50.5 75.7#

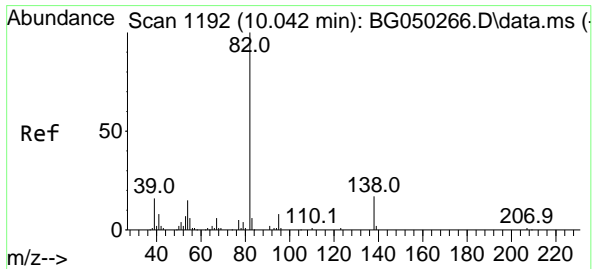
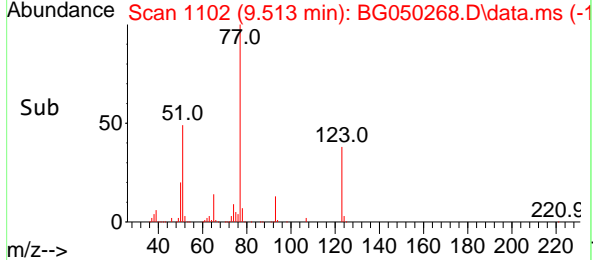
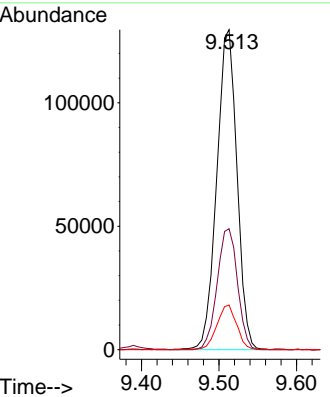
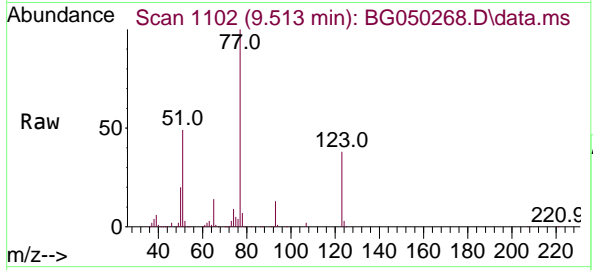




#22
 Nitrobenzene
 Concen: 73.496 ng/u1
 RT: 9.513 min Scan# 1102
 Delta R.T. 0.006 min
 Lab File: BG050268.D
 Acq: 25 Sep 2021 18:00

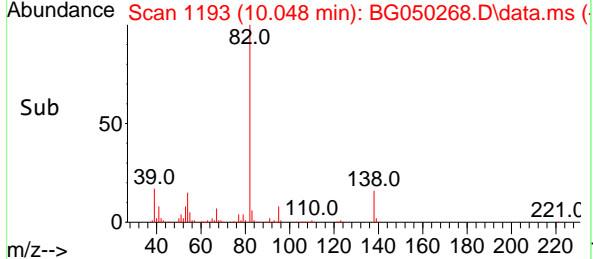
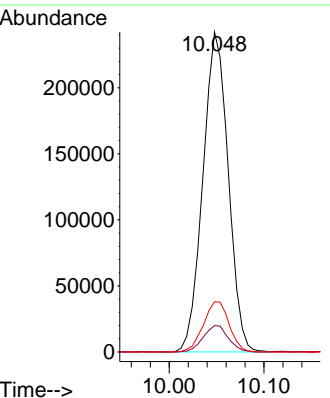
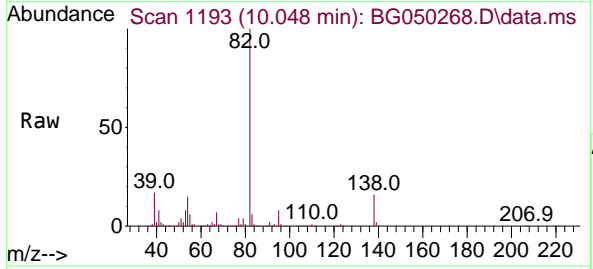
Instrument :
 BNA_G
ClientSampled :
 SSTD080437

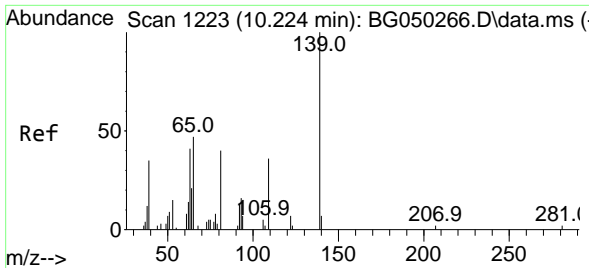
Tgt Ion	Resp	Lower	Upper
77	235280		
123	37.8	30.4	45.6
65	14.0	11.3	16.9



#23
 Isophorone
 Concen: 78.914 ng/u1
 RT: 10.048 min Scan# 1193
 Delta R.T. 0.006 min
 Lab File: BG050268.D
 Acq: 25 Sep 2021 18:00

Tgt Ion	Resp	Lower	Upper
82	450105		
95	8.2	7.8	11.8
138	15.7	11.4	17.0



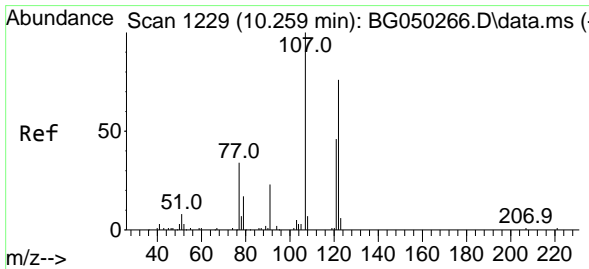
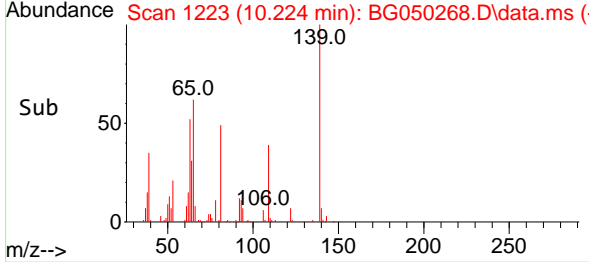
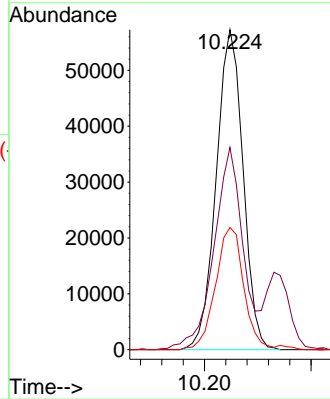
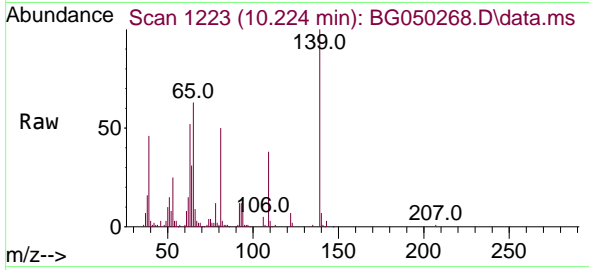


#25
 2-Nitrophenol
 Concen: 73.165 ng/ul
 RT: 10.224 min Scan# 1223
 Delta R.T. -0.000 min
 Lab File: BG050268.D
 Acq: 25 Sep 2021 18:00

Instrument :
 BNA_G
 ClientSampleId :
 SSTD080437

Tgt Ion:139 Resp: 100069

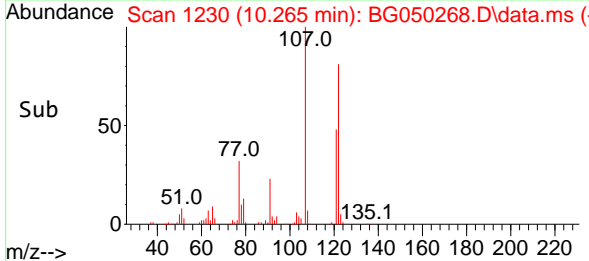
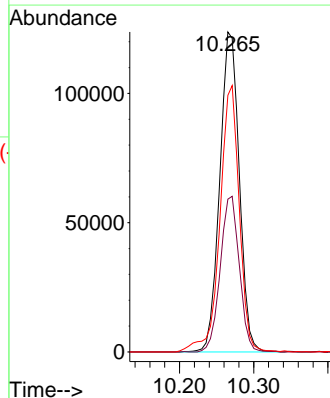
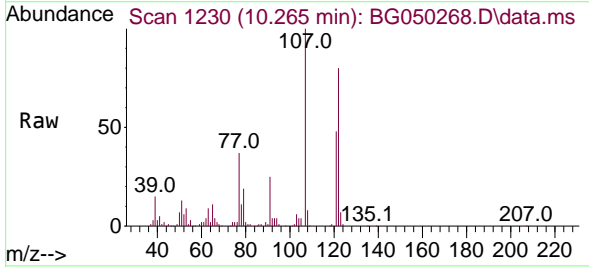
Ion	Ratio	Lower	Upper
139	100		
65	63.2	53.1	79.7
109	38.2	44.1	66.1#

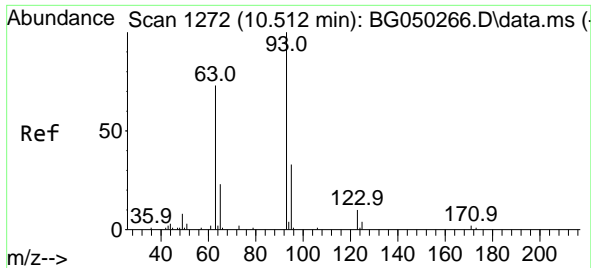


#26
 2,4-Dimethylphenol
 Concen: 74.316 ng/ul
 RT: 10.265 min Scan# 1230
 Delta R.T. 0.006 min
 Lab File: BG050268.D
 Acq: 25 Sep 2021 18:00

Tgt Ion:107 Resp: 225892

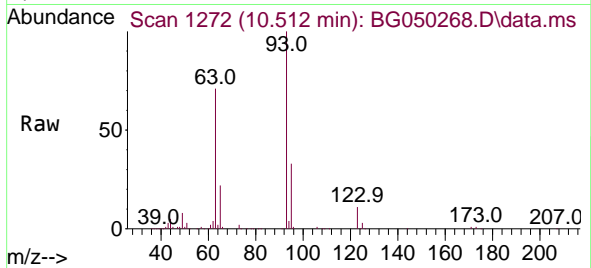
Ion	Ratio	Lower	Upper
107	100		
121	47.8	32.7	49.1
122	80.2	52.6	79.0#





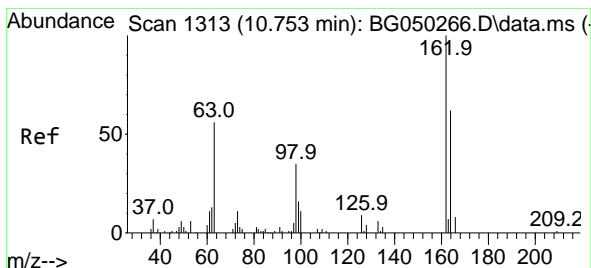
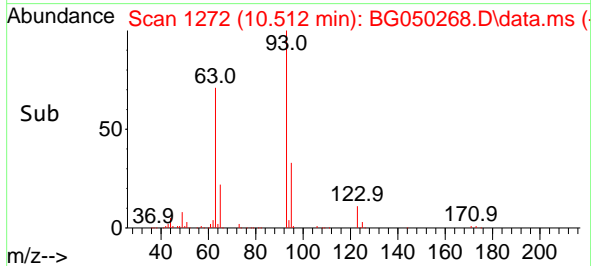
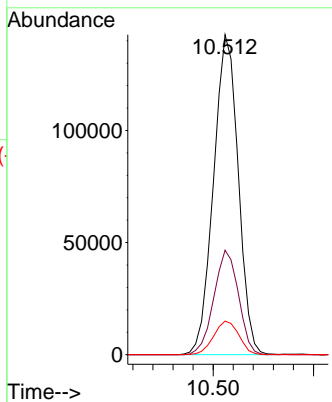
#27
 Bis(2-Chloroethoxy)methane
 Concen: 82.855 ng/ul
 RT: 10.512 min Scan# 1272
 Delta R.T. -0.000 min
 Lab File: BG050268.D
 Acq: 25 Sep 2021 18:00

Instrument :
 BNA_G
 ClientSampled :
 SSTD080437

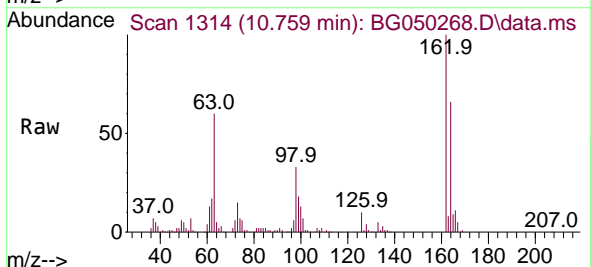


Tgt Ion: 93 Resp: 244037

Ion	Ratio	Lower	Upper
93	100		
95	32.6	24.8	37.2
123	10.5	8.2	12.2

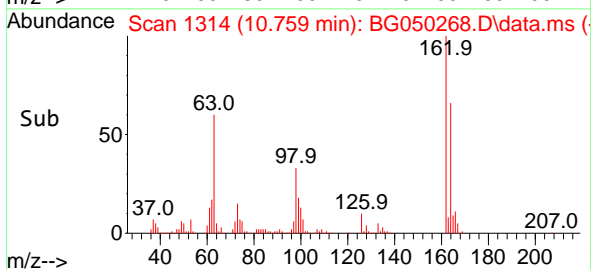
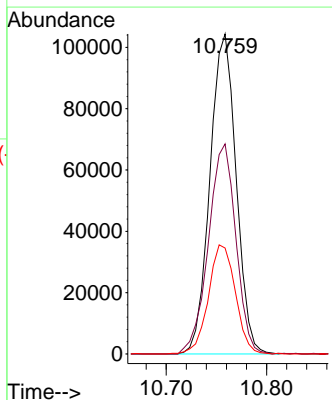


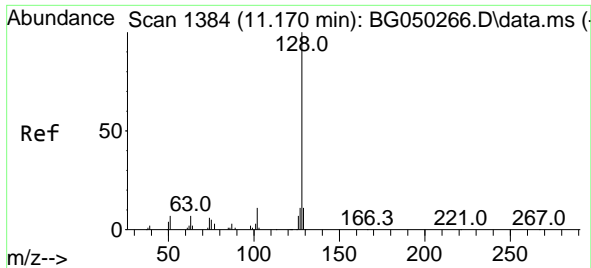
#29
 2,4-Dichlorophenol
 Concen: 82.228 ng/ul
 RT: 10.759 min Scan# 1314
 Delta R.T. 0.006 min
 Lab File: BG050268.D
 Acq: 25 Sep 2021 18:00



Tgt Ion: 162 Resp: 189370

Ion	Ratio	Lower	Upper
162	100		
164	65.6	51.0	76.6
98	33.1	27.8	41.8

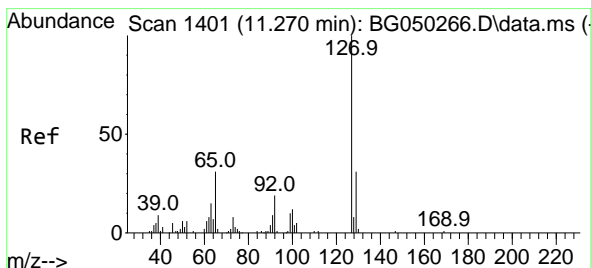
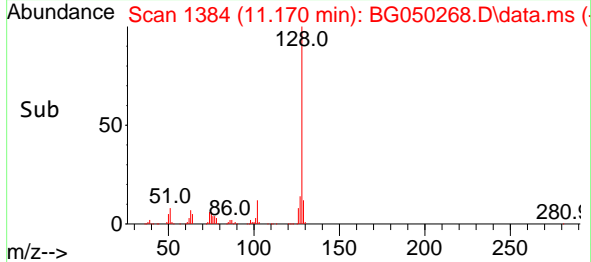
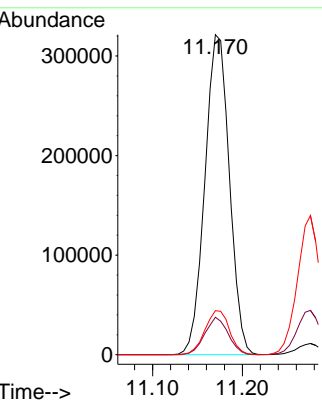
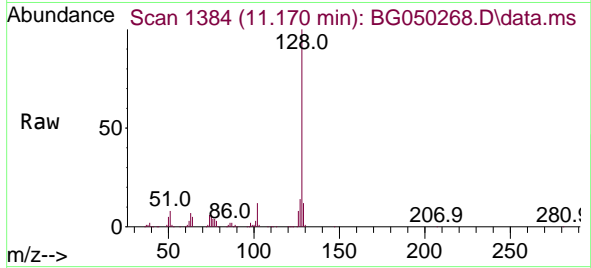




#30
 Naphthalene
 Concen: 79.953 ng/uI
 RT: 11.170 min Scan# 1384
 Delta R.T. 0.000 min
 Lab File: BG050268.D
 Acq: 25 Sep 2021 18:00

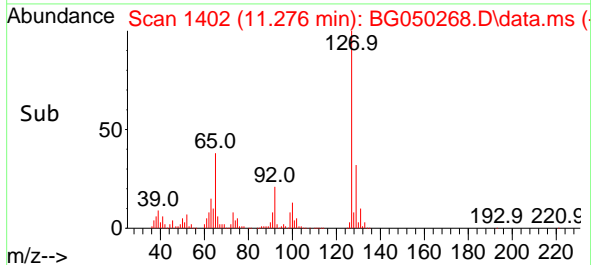
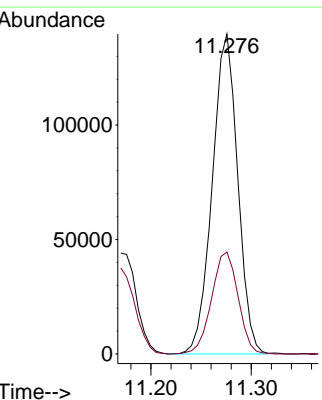
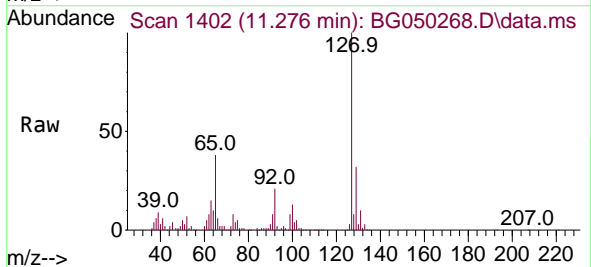
Instrument :
 BNA_G
 ClientSampleId :
 SSTD080437

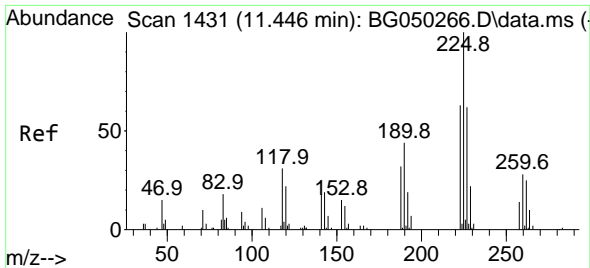
Tgt Ion	Resp	Lower	Upper
128	608983		
129	11.7	9.3	13.9
127	13.7	9.8	14.6



#32
 4-Chloroaniline
 Concen: 74.856 ng/uI
 RT: 11.276 min Scan# 1402
 Delta R.T. 0.006 min
 Lab File: BG050268.D
 Acq: 25 Sep 2021 18:00

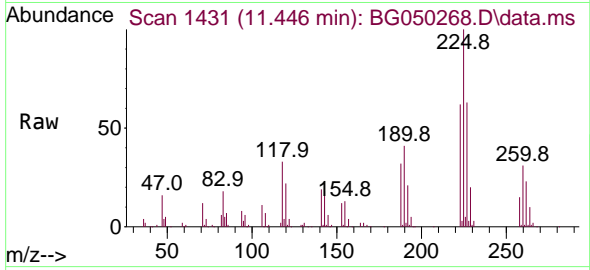
Tgt Ion	Resp	Lower	Upper
127	246205		
129	31.8	30.3	45.5



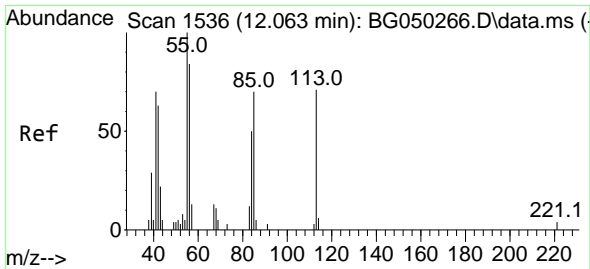
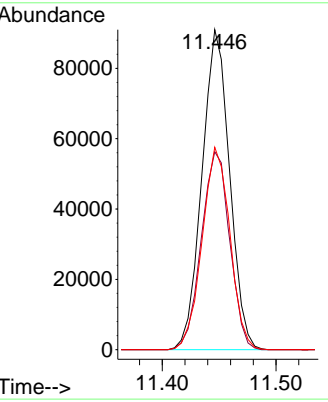
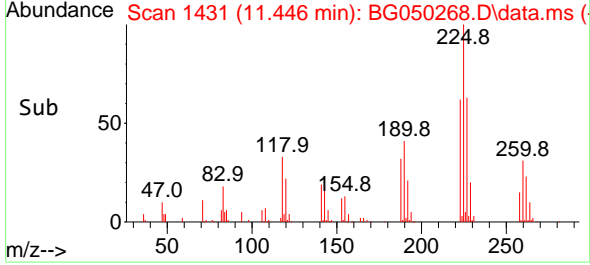


#33
 Hexachlorobutadiene
 Concen: 82.447 ng/uI
 RT: 11.446 min Scan# 1431
 Delta R.T. 0.000 min
 Lab File: BG050268.D
 Acq: 25 Sep 2021 18:00

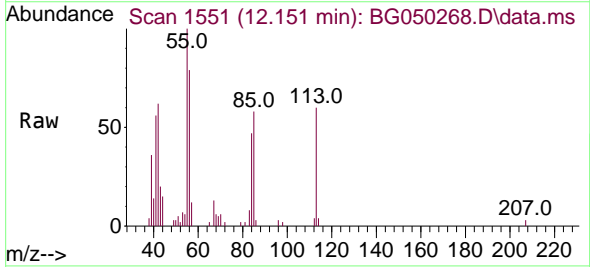
Instrument :
 BNA_G
ClientSampled :
 SSTD080437



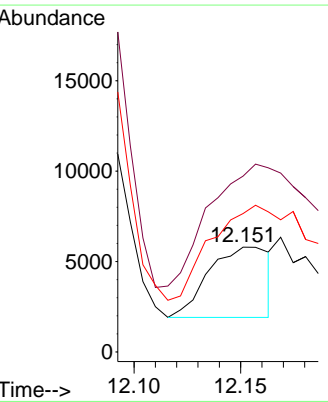
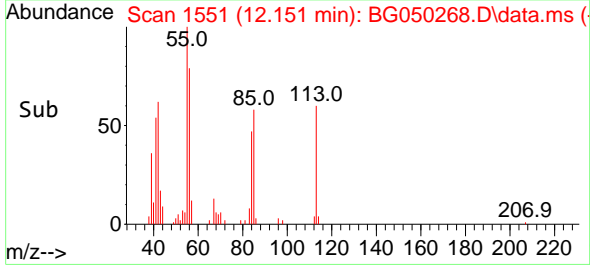
Tgt Ion:225 Resp: 153601
 Ion Ratio Lower Upper
 225 100
 223 61.9 51.3 76.9
 227 63.3 55.1 82.7

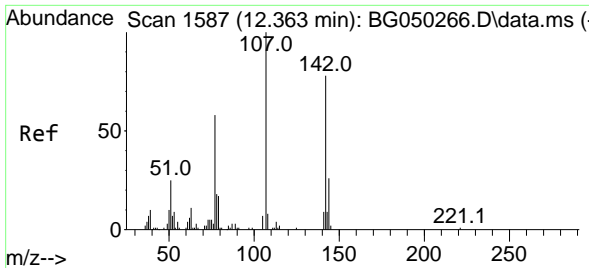


#34
 Caprolactam
 Concen: 9.499 ng/uI
 RT: 12.151 min Scan# 1551
 Delta R.T. 0.088 min
 Lab File: BG050268.D
 Acq: 25 Sep 2021 18:00



Tgt Ion:113 Resp: 7663
 Ion Ratio Lower Upper
 113 100
 55 167.7 114.0 171.0
 56 131.9 107.4 161.0

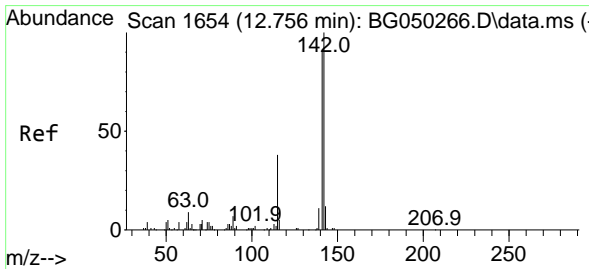
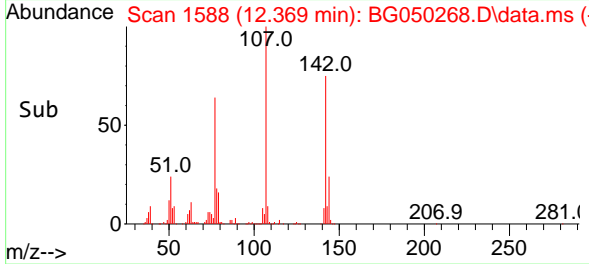
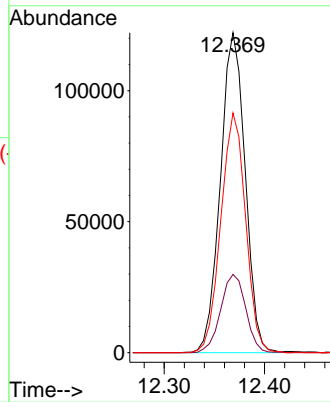
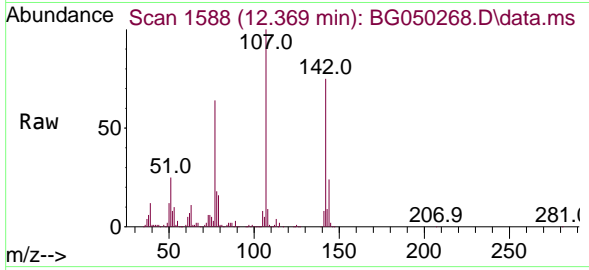




#35
 4-Chloro-3-methylphenol
 Concen: 75.933 ng/ul
 RT: 12.369 min Scan# 1588
 Delta R.T. 0.006 min
 Lab File: BG050268.D
 Acq: 25 Sep 2021 18:00

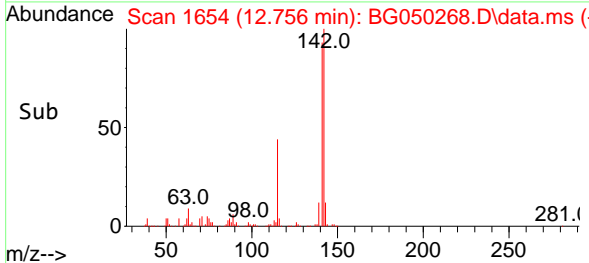
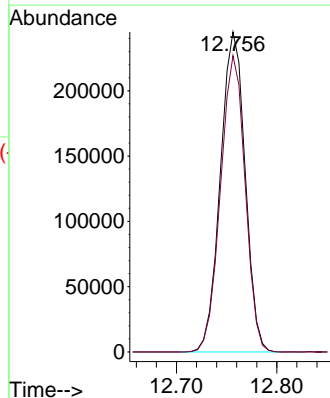
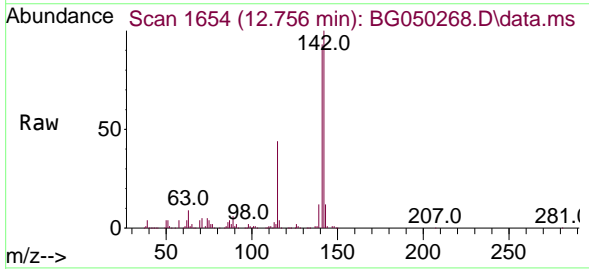
Instrument :
 BNA_G
 ClientSampled :
 SSTD080437

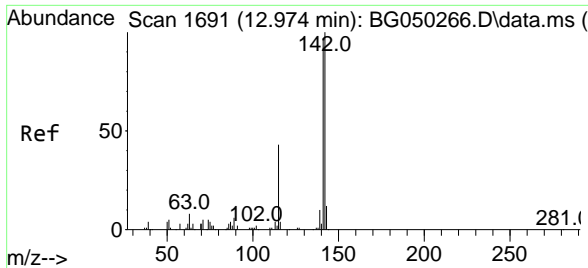
Tgt Ion	Resp	Lower	Upper
107	208995		
107	100		
144	24.5	18.9	28.3
142	74.9	59.2	88.8



#36
 2-Methylnaphthalene
 Concen: 73.969 ng/ul
 RT: 12.756 min Scan# 1654
 Delta R.T. -0.000 min
 Lab File: BG050268.D
 Acq: 25 Sep 2021 18:00

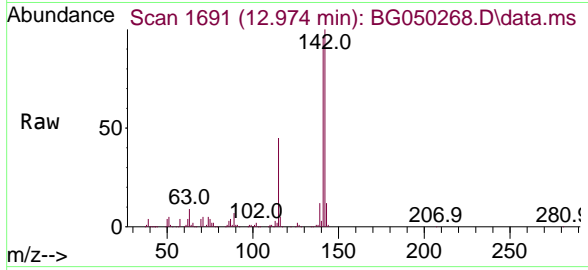
Tgt Ion	Resp	Lower	Upper
142	418808		
142	100		
141	92.6	70.5	105.7





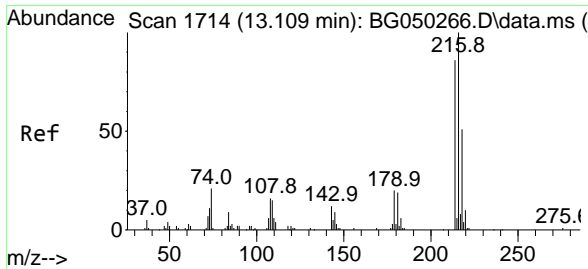
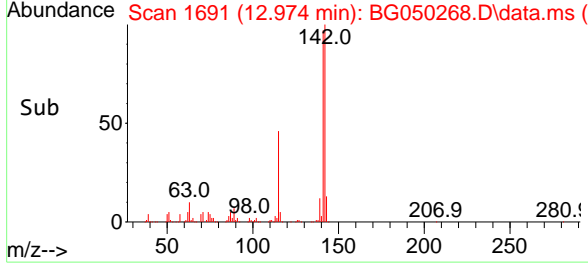
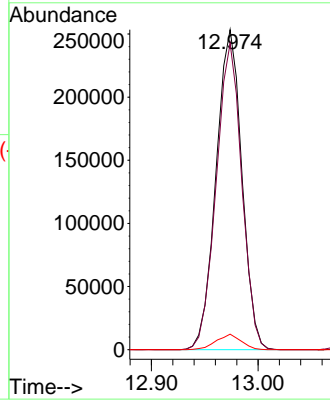
#37
 1-Methylnaphthalene
 Concen: 74.387 ng/ul
 RT: 12.974 min Scan# 1691
 Delta R.T. 0.000 min
 Lab File: BG050268.D
 Acq: 25 Sep 2021 18:00

Instrument :
 BNA_G
 ClientSampled :
 SSTD080437

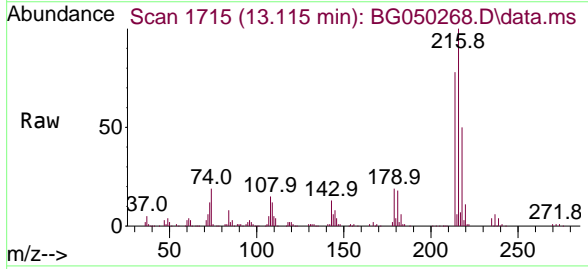


Tgt Ion:142 Resp: 425131

Ion	Ratio	Lower	Upper
142	100		
141	95.7	75.8	113.8
116	4.8	3.7	5.5

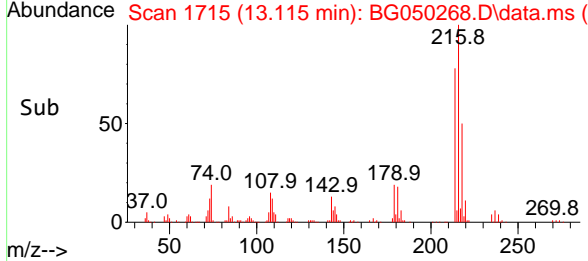
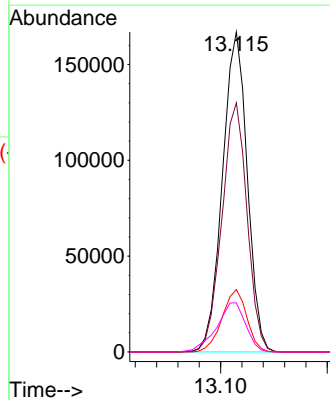


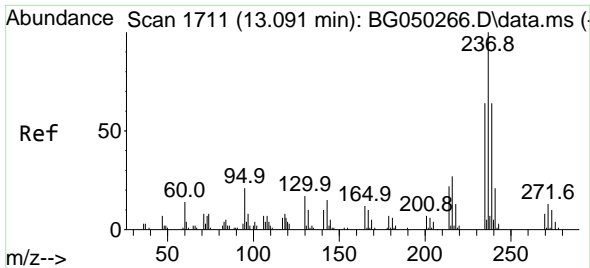
#39
 1,2,4,5-Tetrachlorobenzene
 Concen: 83.103 ng/ul
 RT: 13.115 min Scan# 1715
 Delta R.T. 0.006 min
 Lab File: BG050268.D
 Acq: 25 Sep 2021 18:00



Tgt Ion:216 Resp: 269522

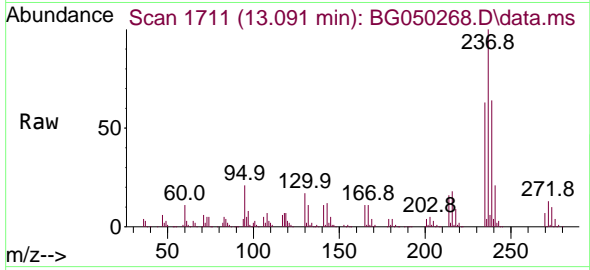
Ion	Ratio	Lower	Upper
216	100		
214	77.9	64.2	96.2
179	19.5	12.8	19.2#
108	15.4	13.1	19.7





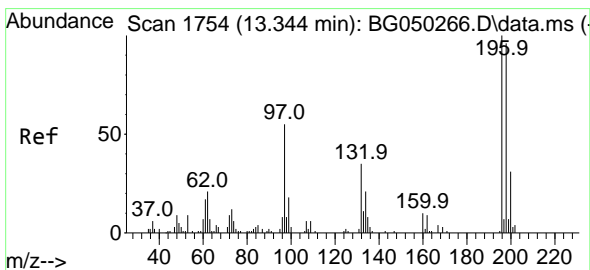
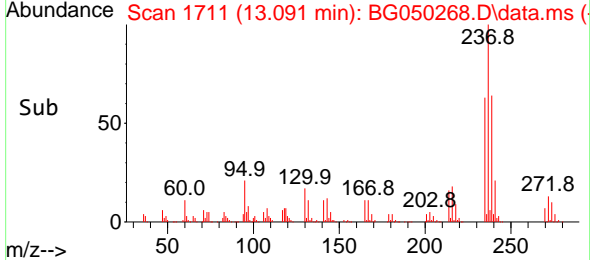
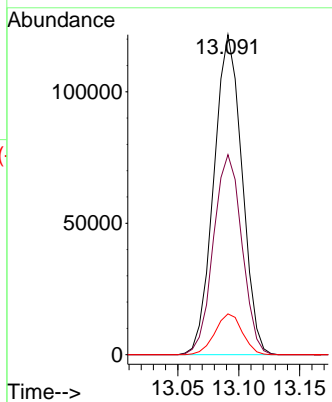
#40
 Hexachlorocyclopentadiene
 Concen: 135.005 ng/uI
 RT: 13.091 min Scan# 1711
 Delta R.T. -0.000 min
 Lab File: BG050268.D
 Acq: 25 Sep 2021 18:00

Instrument :
 BNA_G
ClientSampled :
 SSTD080437

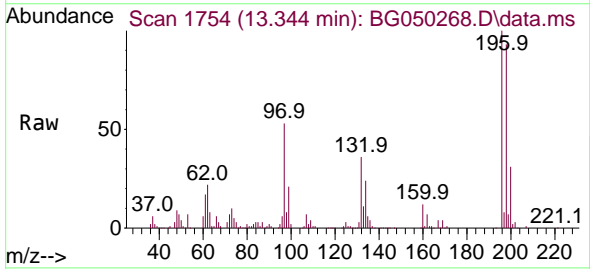


Tgt Ion:237 Resp: 195958

Ion	Ratio	Lower	Upper
237	100		
235	62.5	53.5	80.3
272	12.8	11.5	17.3

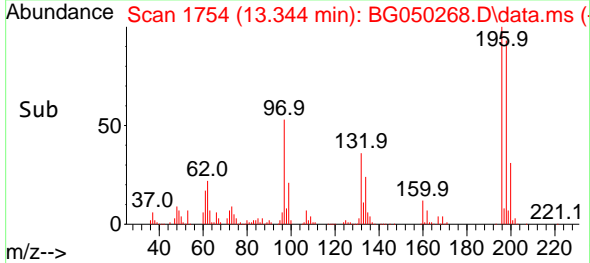
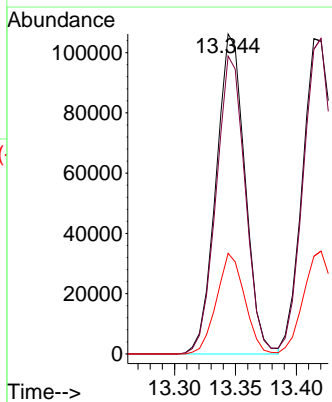


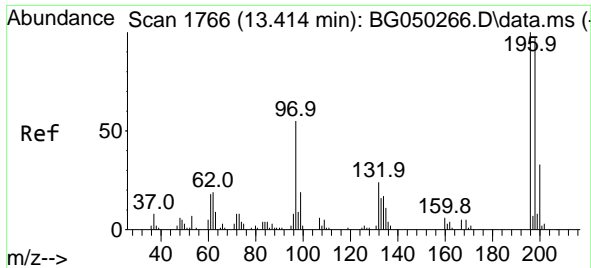
#41
 2,4,6-Trichlorophenol
 Concen: 85.163 ng/uI
 RT: 13.344 min Scan# 1754
 Delta R.T. 0.000 min
 Lab File: BG050268.D
 Acq: 25 Sep 2021 18:00



Tgt Ion:196 Resp: 176014

Ion	Ratio	Lower	Upper
196	100		
198	93.1	83.7	125.5
200	31.5	25.9	38.9

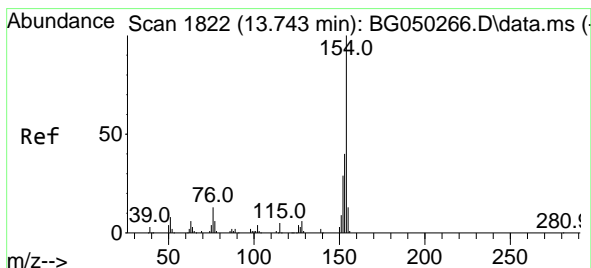
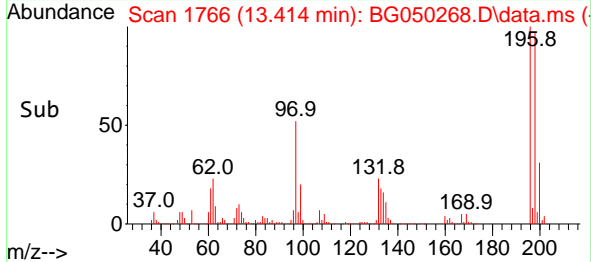
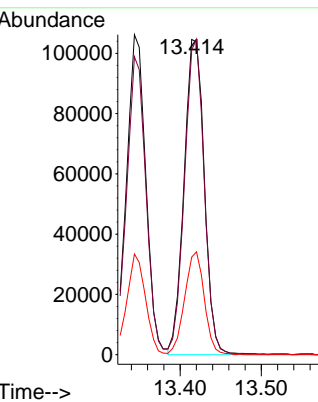
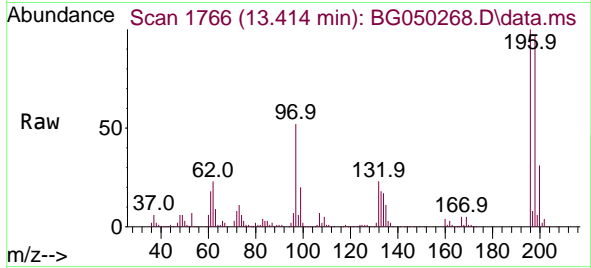




#42
 2,4,5-Trichlorophenol
 Concen: 84.076 ng/u1
 RT: 13.414 min Scan# 1766
 Delta R.T. -0.000 min
 Lab File: BG050268.D
 Acq: 25 Sep 2021 18:00

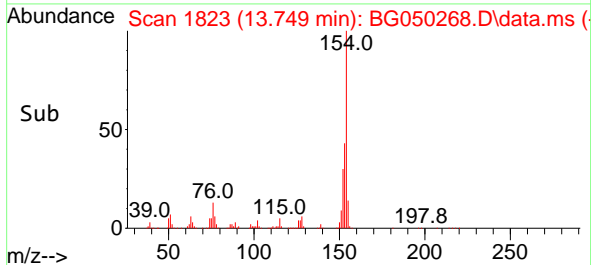
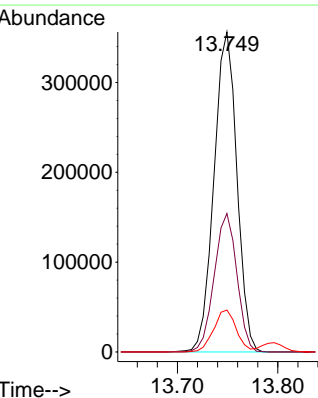
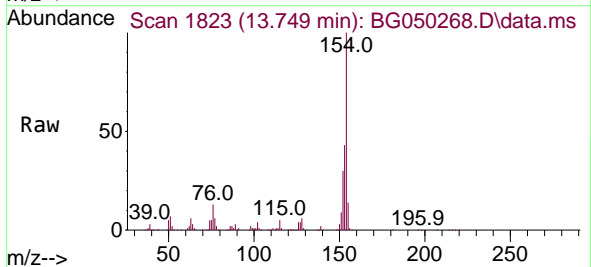
Instrument :
 BNA_G
 ClientSampled :
 SSTD080437

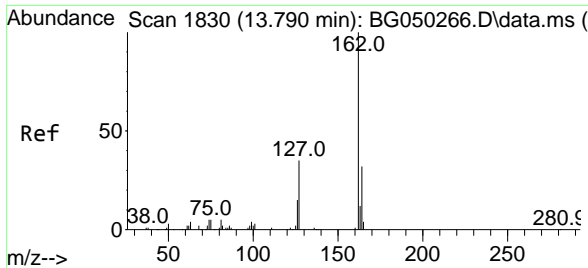
Tgt Ion	Resp	Lower	Upper
196	182120		
196	100		
198	96.7	70.3	105.5
200	30.9	26.6	40.0



#43
 1,1'-Biphenyl
 Concen: 73.284 ng/u1
 RT: 13.749 min Scan# 1823
 Delta R.T. 0.006 min
 Lab File: BG050268.D
 Acq: 25 Sep 2021 18:00

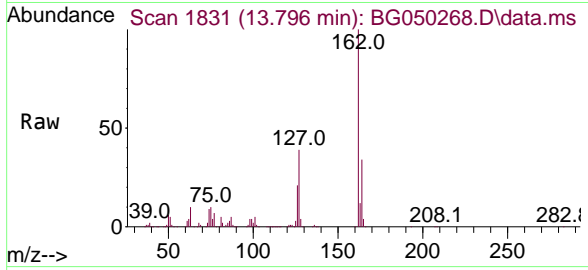
Tgt Ion	Resp	Lower	Upper
154	565336		
154	100		
153	43.2	32.5	48.7
76	13.1	7.8	11.8#





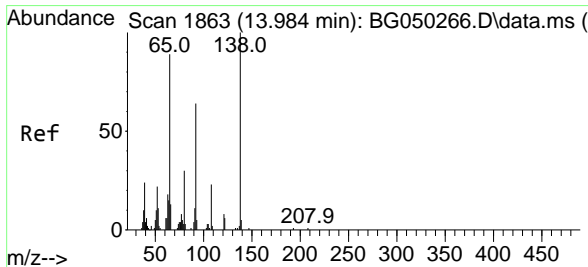
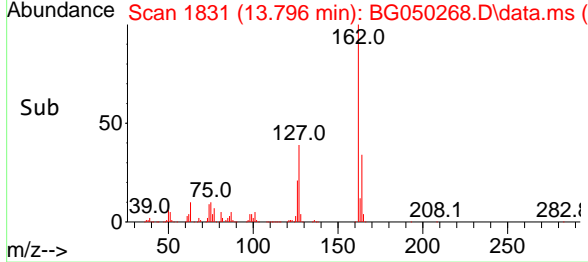
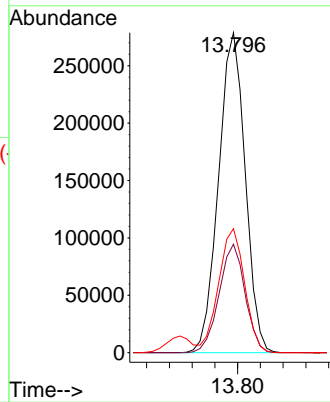
#44
 2-Chloronaphthalene
 Concen: 73.140 ng/ul
 RT: 13.796 min Scan# 1831
 Delta R.T. 0.006 min
 Lab File: BG050268.D
 Acq: 25 Sep 2021 18:00

Instrument :
 BNA_G
ClientSampled :
 SSTD080437

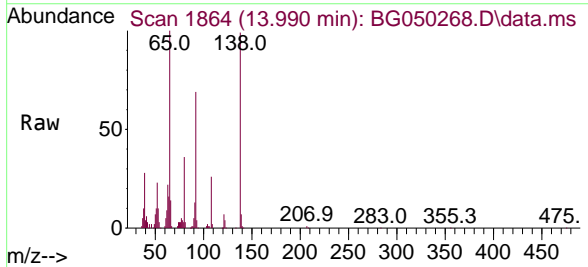


Tgt Ion:162 Resp: 453207

Ion	Ratio	Lower	Upper
162	100		
164	33.9	25.2	37.8
127	38.8	31.9	47.9

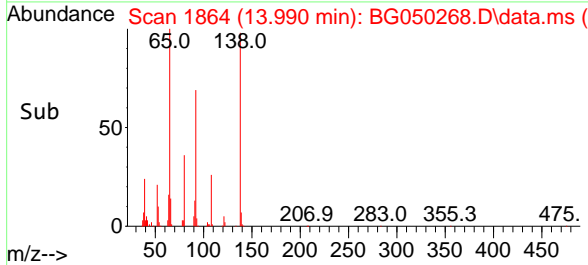
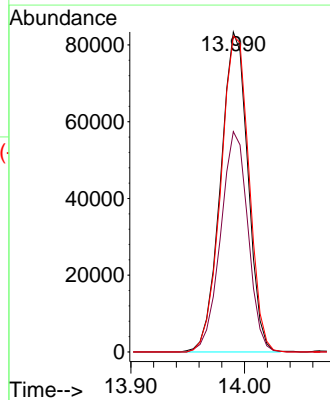


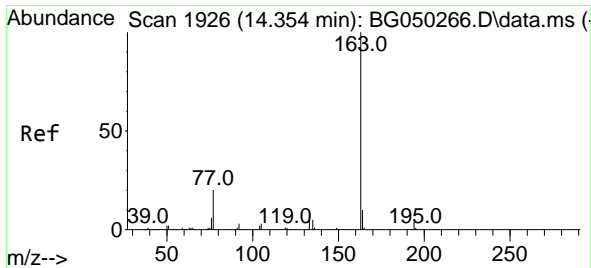
#45
 2-Nitroaniline
 Concen: 66.138 ng/ul
 RT: 13.990 min Scan# 1864
 Delta R.T. 0.006 min
 Lab File: BG050268.D
 Acq: 25 Sep 2021 18:00



Tgt Ion: 65 Resp: 139141

Ion	Ratio	Lower	Upper
65	100		
92	68.9	55.6	83.4
138	98.7	78.7	118.1

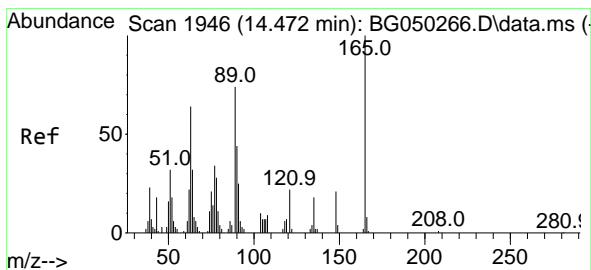
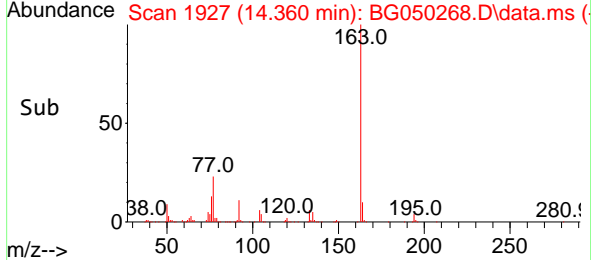
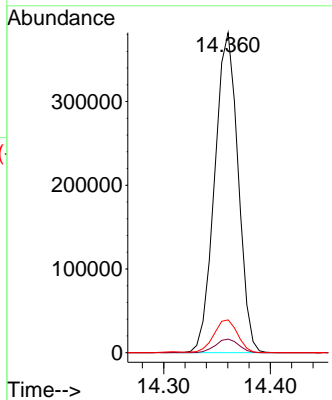
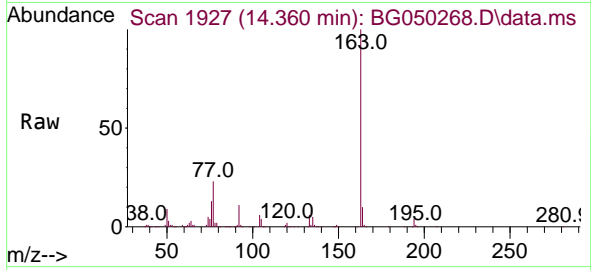




#47
 Dimethylphthalate
 Concen: 69.678 ng/ul
 RT: 14.360 min Scan# 1927
 Delta R.T. 0.006 min
 Lab File: BG050268.D
 Acq: 25 Sep 2021 18:00

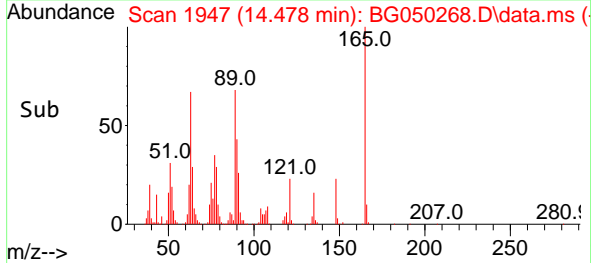
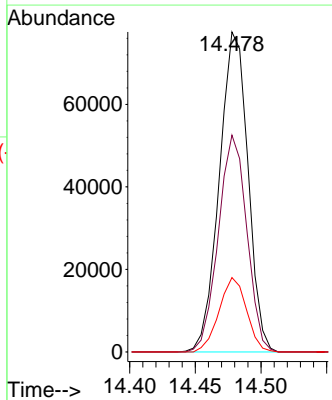
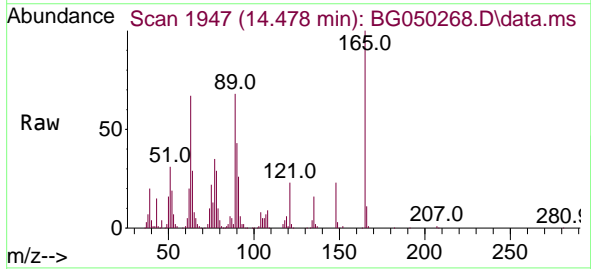
Instrument :
 BNA_G
ClientSampled :
 SSTD080437

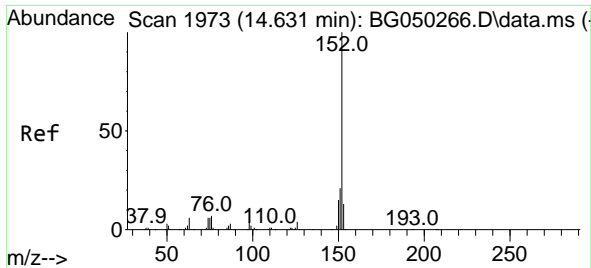
Tgt Ion	Resp	Lower	Upper
163	582736		
100			
194	4.3	3.4	5.0
164	10.3	8.2	12.4



#48
 2,6-Dinitrotoluene
 Concen: 68.189 ng/ul
 RT: 14.478 min Scan# 1947
 Delta R.T. 0.006 min
 Lab File: BG050268.D
 Acq: 25 Sep 2021 18:00

Tgt Ion	Resp	Lower	Upper
165	117739		
100			
89	67.7	62.5	93.7
121	23.3	22.2	33.2

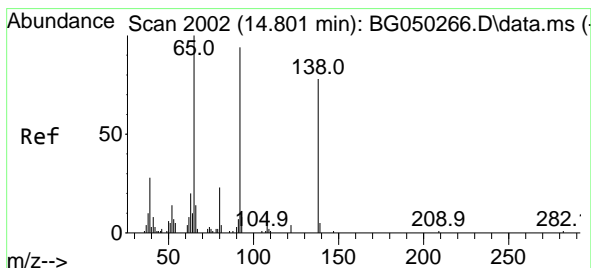
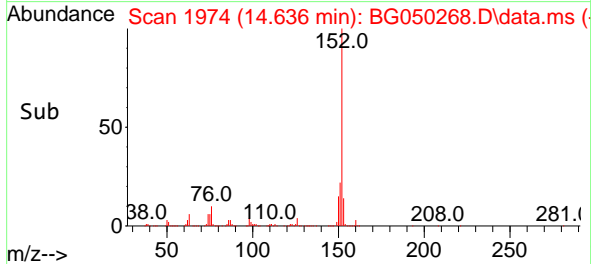
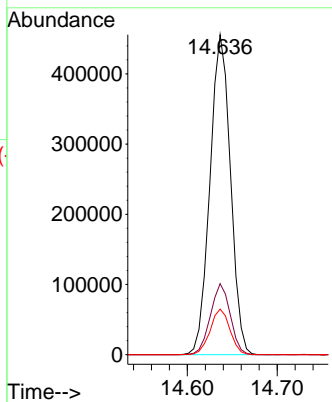
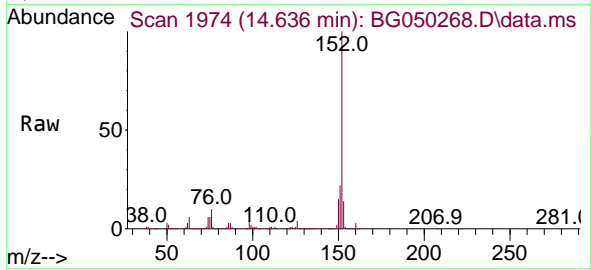




#50
 Acenaphthylene
 Concen: 79.827 ng/uI
 RT: 14.636 min Scan# 1974
 Delta R.T. 0.006 min
 Lab File: BG050268.D
 Acq: 25 Sep 2021 18:00

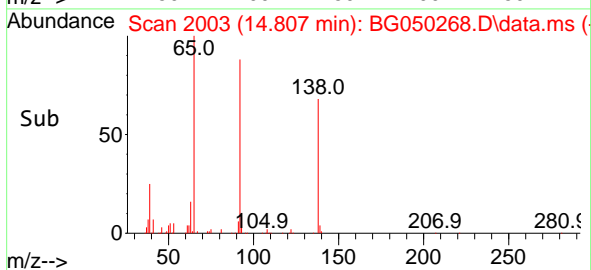
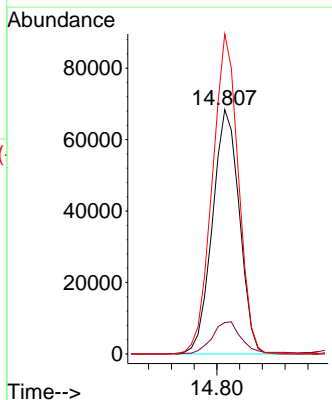
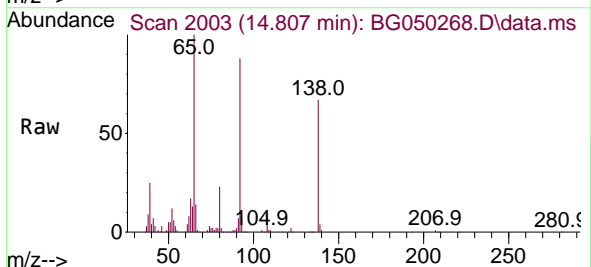
Instrument :
 BNA_G
 ClientSampleId :
 SSTD080437

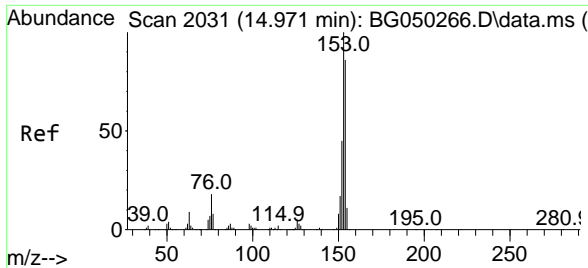
Tgt Ion	Resp	Lower	Upper
152	722907		
151	22.2	15.2	22.8
153	14.3	10.7	16.1



#51
 3-Nitroaniline
 Concen: 67.552 ng/uI
 RT: 14.807 min Scan# 2003
 Delta R.T. 0.006 min
 Lab File: BG050268.D
 Acq: 25 Sep 2021 18:00

Tgt Ion	Resp	Lower	Upper
138	112551		
108	12.8	9.0	13.4
92	131.0	96.4	144.6



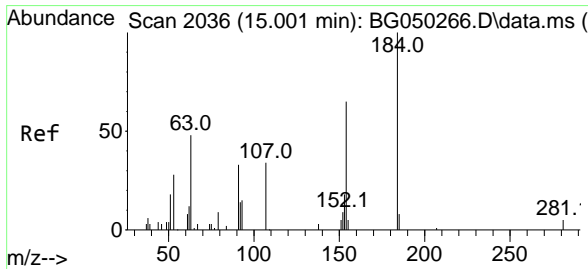
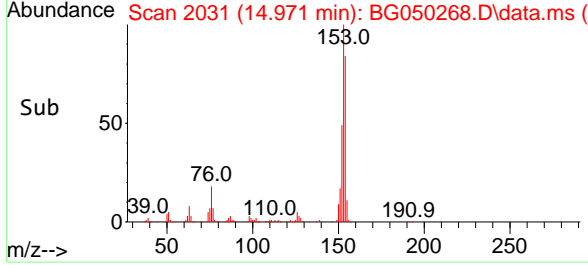
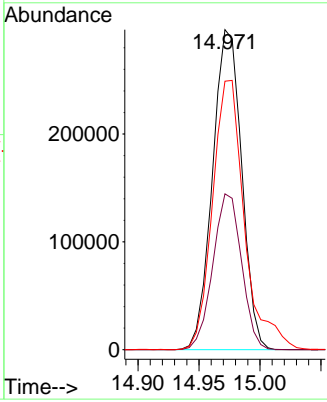
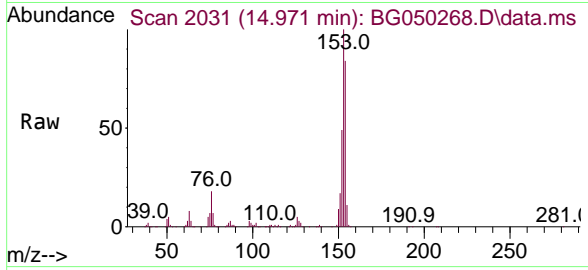


#52
 Acenaphthene
 Concen: 75.101 ng/ul
 RT: 14.971 min Scan# 2031
 Delta R.T. -0.000 min
 Lab File: BG050268.D
 Acq: 25 Sep 2021 18:00

Instrument :
 BNA_G
ClientSampleId :
 SSTD080437

Tgt Ion:153 Resp: 493351

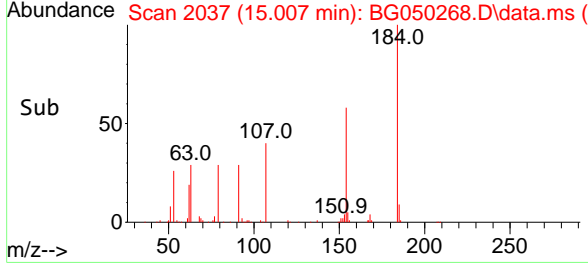
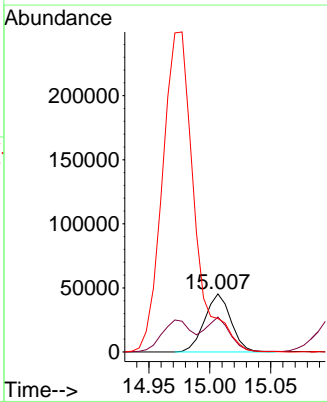
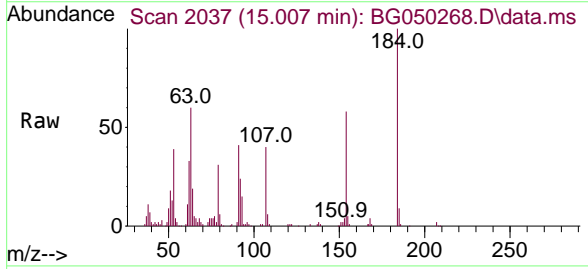
Ion	Ratio	Lower	Upper
153	100		
152	48.7	37.4	56.2
154	83.9	71.5	107.3

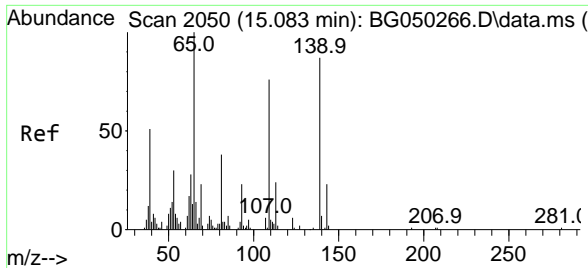


#53
 2,4-Dinitrophenol
 Concen: 77.120 ng/ul
 RT: 15.007 min Scan# 2037
 Delta R.T. 0.006 min
 Lab File: BG050268.D
 Acq: 25 Sep 2021 18:00

Tgt Ion:184 Resp: 68010

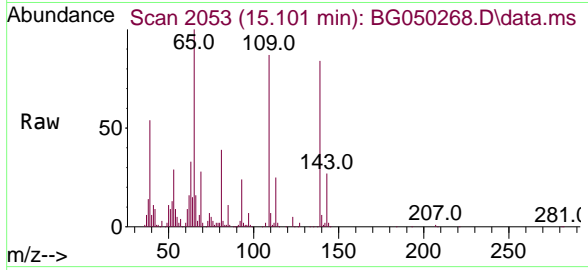
Ion	Ratio	Lower	Upper
184	100		
63	60.2	75.8	113.8#
154	57.6	64.6	96.8#



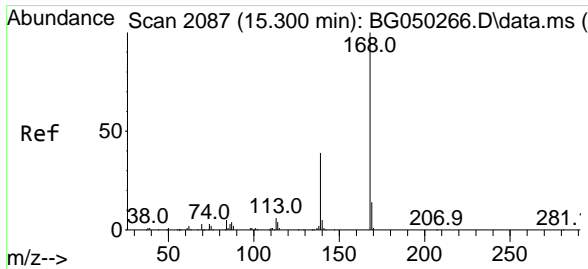
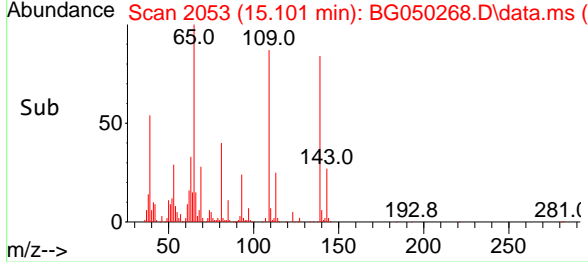
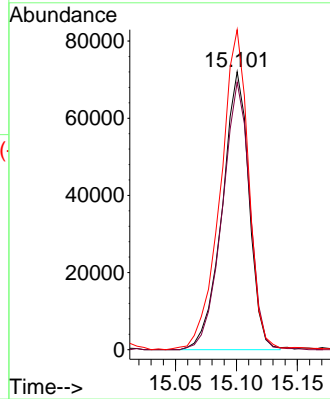


#55
 4-Nitrophenol
 Concen: 71.390 ng/uI
 RT: 15.101 min Scan# 2053
 Delta R.T. 0.018 min
 Lab File: BG050268.D
 Acq: 25 Sep 2021 18:00

Instrument :
 BNA_G
ClientSampled :
 SSTD080437

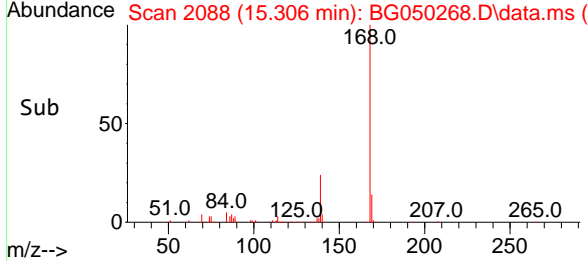
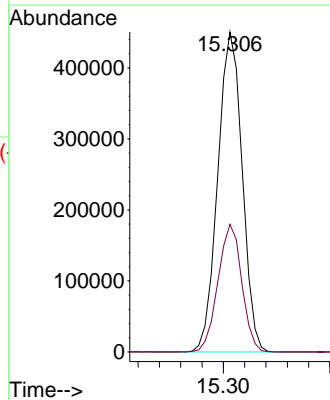
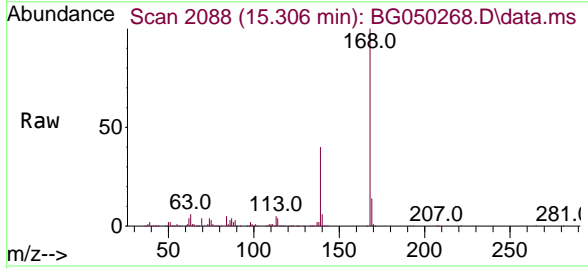


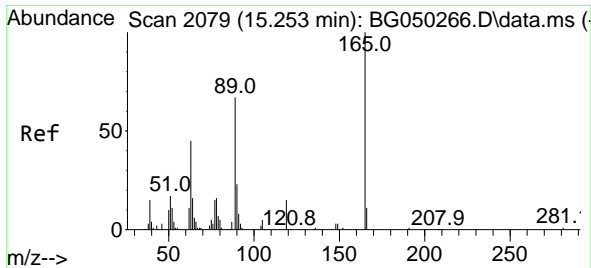
Tgt Ion:109 Resp: 110666
 Ion Ratio Lower Upper
 109 100
 139 96.3 61.4 92.0#
 65 115.1 76.5 114.7#



#56
 Dibenzofuran
 Concen: 78.705 ng/uI
 RT: 15.306 min Scan# 2088
 Delta R.T. 0.006 min
 Lab File: BG050268.D
 Acq: 25 Sep 2021 18:00

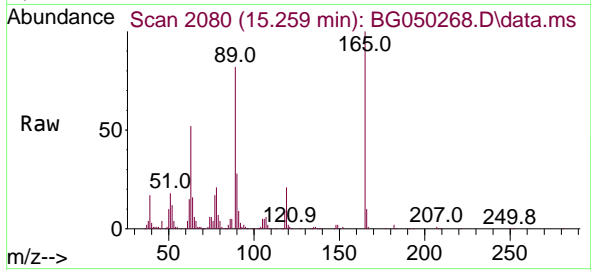
Tgt Ion:168 Resp: 716001
 Ion Ratio Lower Upper
 168 100
 139 39.9 33.8 50.8



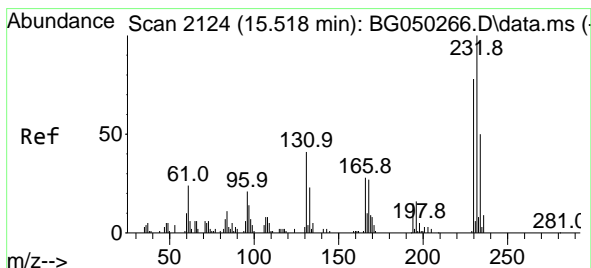
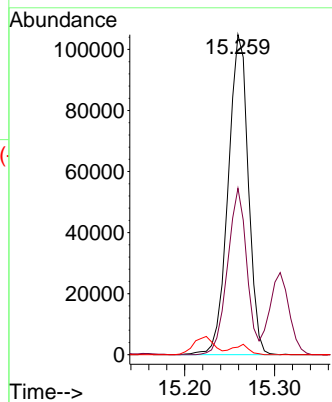
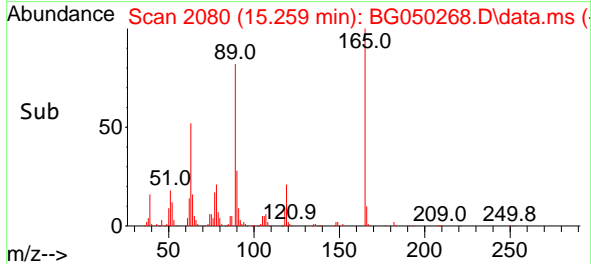


#57
 2,4-Dinitrotoluene
 Concen: 65.729 ng/ul
 RT: 15.259 min Scan# 2080
 Delta R.T. 0.006 min
 Lab File: BG050268.D
 Acq: 25 Sep 2021 18:00

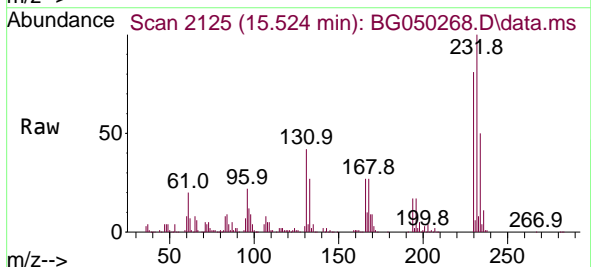
Instrument :
 BNA_G
 ClientSampleId :
 SSTD080437



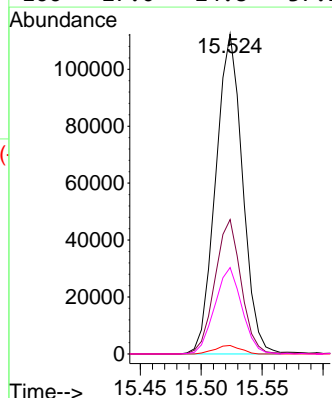
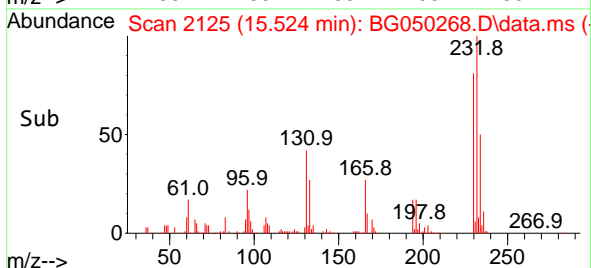
Tgt Ion:165 Resp: 163249
 Ion Ratio Lower Upper
 165 100
 63 52.0 42.3 63.5
 182 2.4 2.6 4.0#

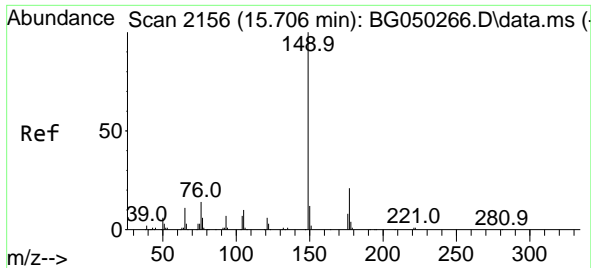


#58
 2,3,4,6-Tetrachlorophenol
 Concen: 96.117 ng/ul
 RT: 15.524 min Scan# 2125
 Delta R.T. 0.006 min
 Lab File: BG050268.D
 Acq: 25 Sep 2021 18:00



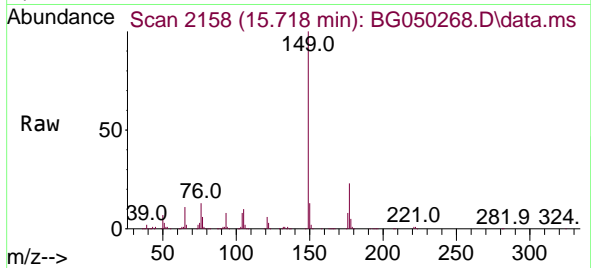
Tgt Ion:232 Resp: 172530
 Ion Ratio Lower Upper
 232 100
 131 42.0 40.0 60.0
 130 2.7 1.8 2.8
 166 27.0 24.8 37.2





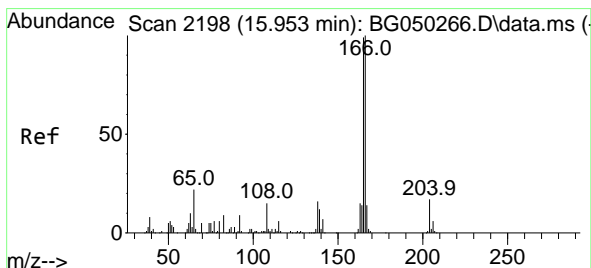
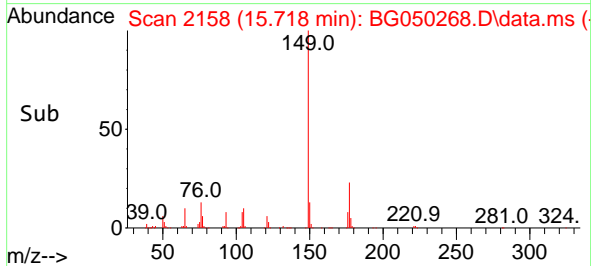
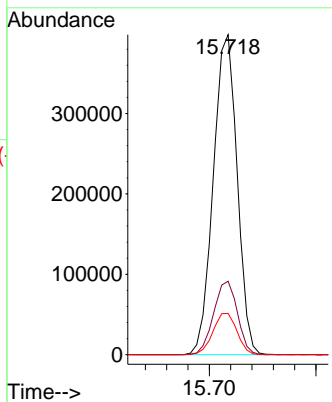
#59
 Diethylphthalate
 Concen: 72.081 ng/ul
 RT: 15.718 min Scan# 2158
 Delta R.T. 0.012 min
 Lab File: BG050268.D
 Acq: 25 Sep 2021 18:00

Instrument :
 BNA_G
 ClientSampled :
 SSTD080437



Tgt Ion:149 Resp: 616689

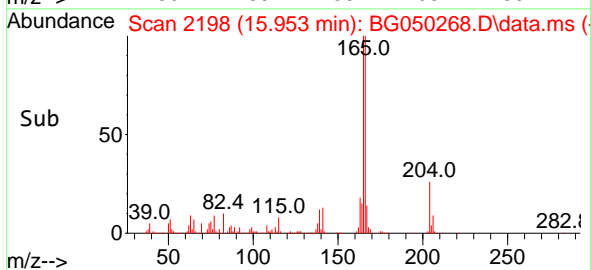
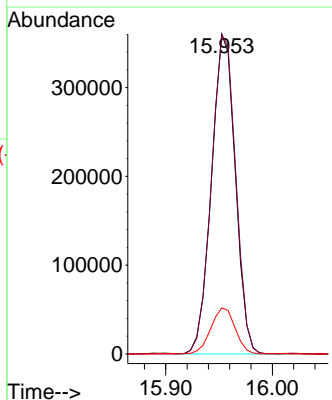
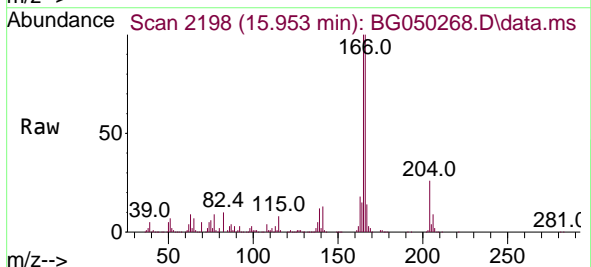
Ion	Ratio	Lower	Upper
149	100		
177	23.0	15.8	23.6
150	12.9	9.7	14.5

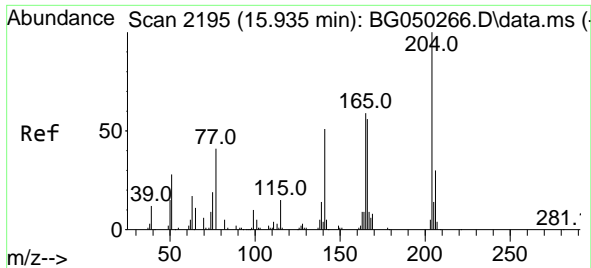


#61
 Fluorene
 Concen: 72.694 ng/ul
 RT: 15.953 min Scan# 2198
 Delta R.T. -0.000 min
 Lab File: BG050268.D
 Acq: 25 Sep 2021 18:00

Tgt Ion:166 Resp: 557942

Ion	Ratio	Lower	Upper
166	100		
165	99.8	83.3	124.9
167	14.4	11.8	17.6

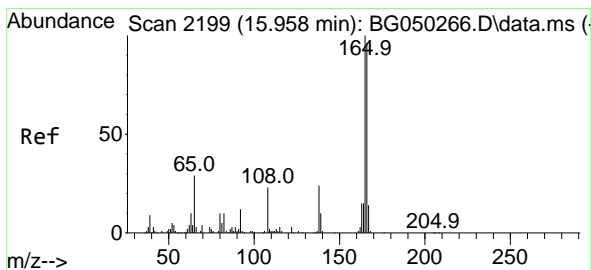
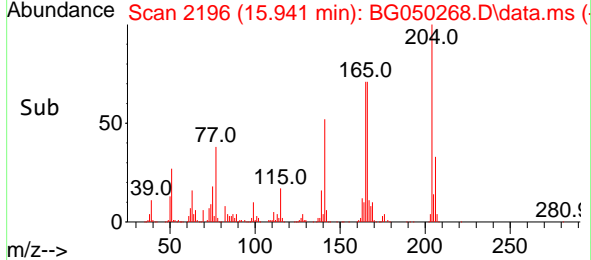
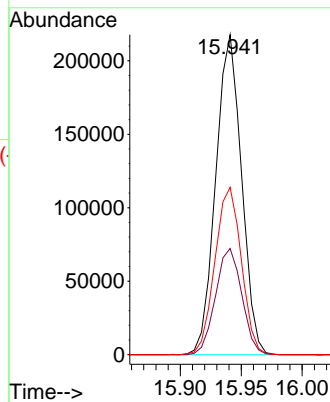
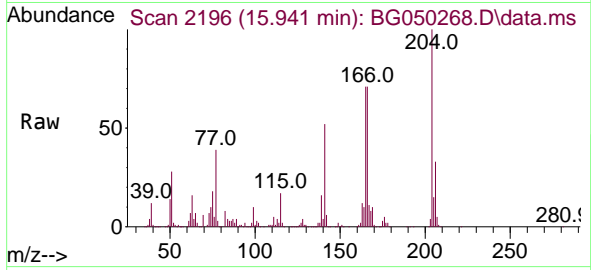




#62
 4-Chlorophenyl-phenylether
 Concen: 78.880 ng/ul
 RT: 15.941 min Scan# 2196
 Delta R.T. 0.006 min
 Lab File: BG050268.D
 Acq: 25 Sep 2021 18:00

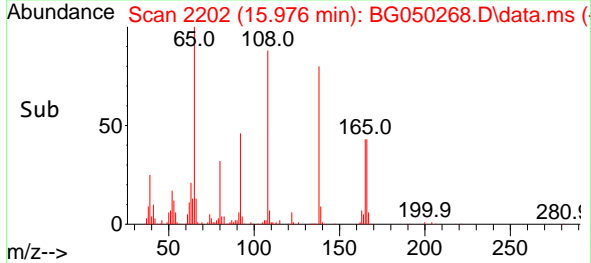
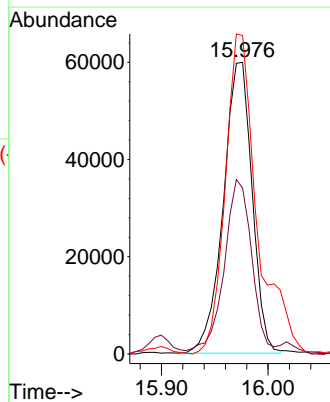
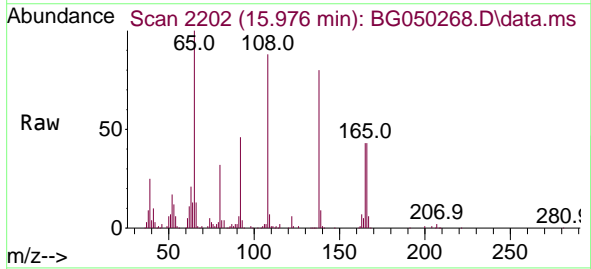
Instrument :
 BNA_G
 ClientSampled :
 SSTD080437

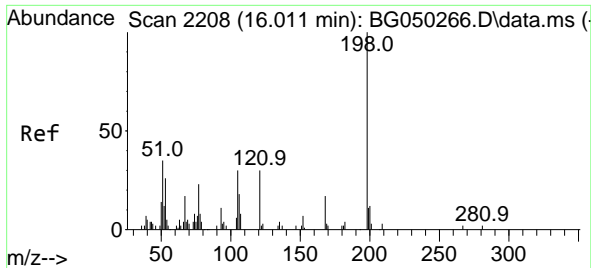
Tgt Ion:204 Resp: 320327
 Ion Ratio Lower Upper
 204 100
 206 33.2 25.4 38.2
 141 52.3 51.8 77.6



#63
 4-Nitroaniline
 Concen: 67.446 ng/ul
 RT: 15.976 min Scan# 2202
 Delta R.T. 0.018 min
 Lab File: BG050268.D
 Acq: 25 Sep 2021 18:00

Tgt Ion:138 Resp: 112141
 Ion Ratio Lower Upper
 138 100
 92 56.9 50.0 75.0
 108 109.1 101.8 152.8

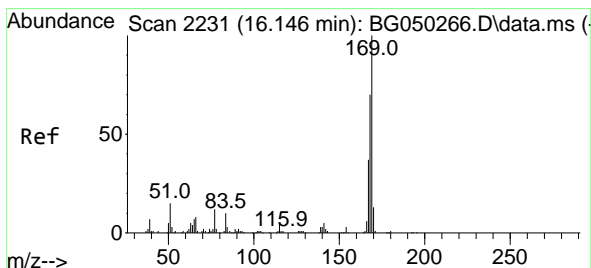
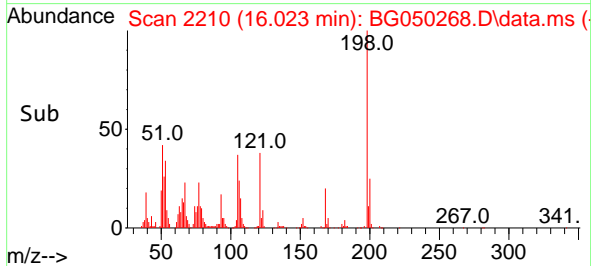
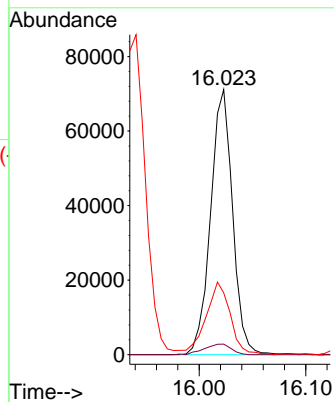
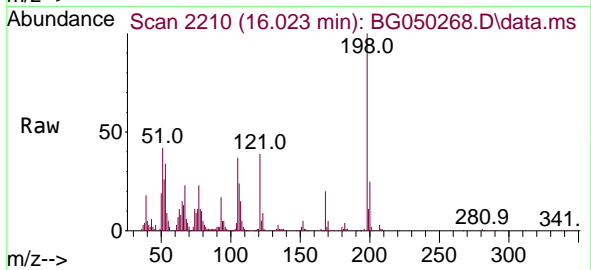




#66
 4,6-Dinitro-2-methylphenol
 Concen: 65.958 ng/ul
 RT: 16.023 min Scan# 2210
 Delta R.T. 0.012 min
 Lab File: BG050268.D
 Acq: 25 Sep 2021 18:00

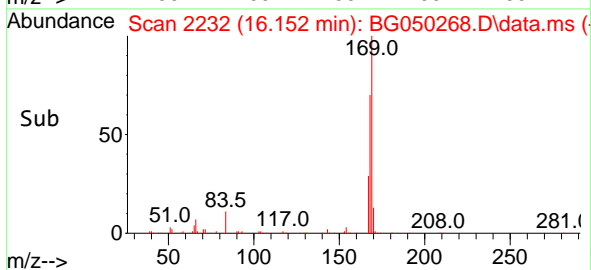
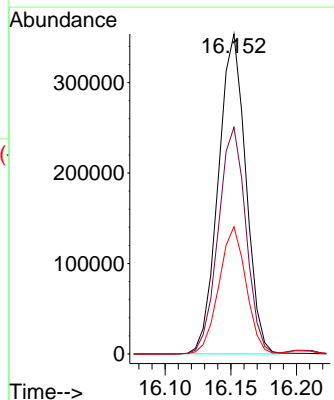
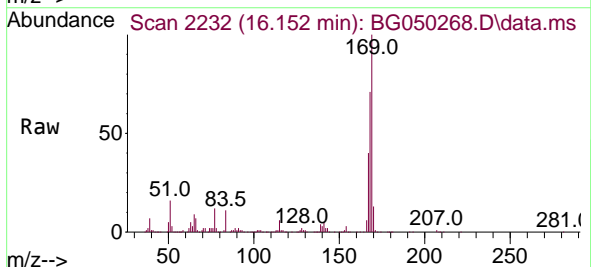
Instrument :
 BNA_G
 ClientSampled :
 SSTD080437

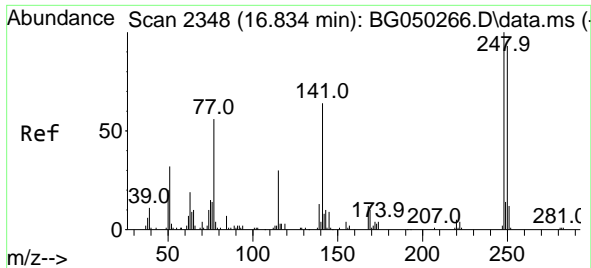
Tgt Ion	Resp	Lower	Upper
198	101716		
182	4.0	3.0	4.6
77	23.3	23.4	35.2#



#67
 N-Nitrosodiphenylamine
 Concen: 73.795 ng/ul
 RT: 16.152 min Scan# 2232
 Delta R.T. 0.006 min
 Lab File: BG050268.D
 Acq: 25 Sep 2021 18:00

Tgt Ion	Resp	Lower	Upper
169	513800		
168	70.9	55.0	82.6
167	39.8	29.0	43.4

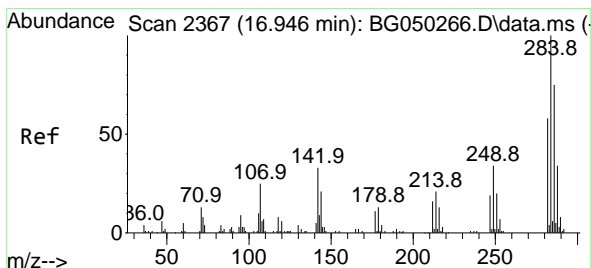
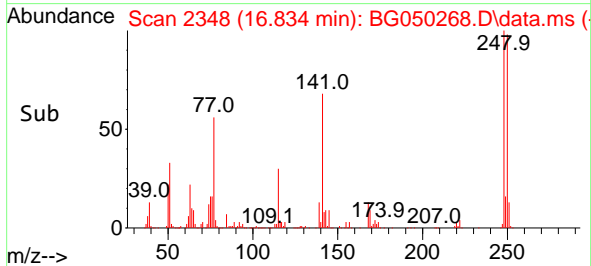
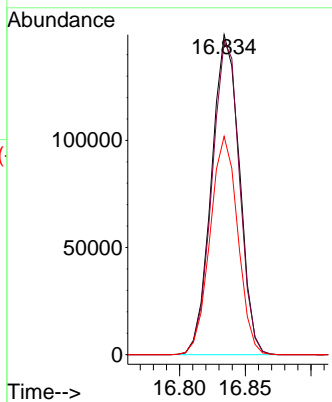
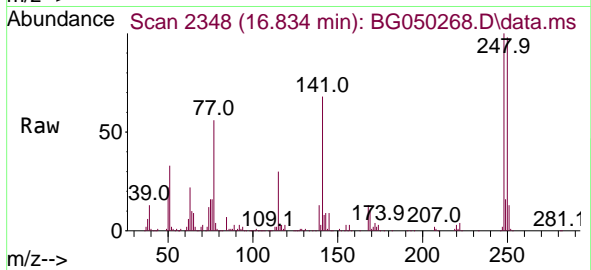




#68
 4-Bromophenyl-phenylether
 Concen: 75.604 ng/ul
 RT: 16.834 min Scan# 2348
 Delta R.T. 0.000 min
 Lab File: BG050268.D
 Acq: 25 Sep 2021 18:00

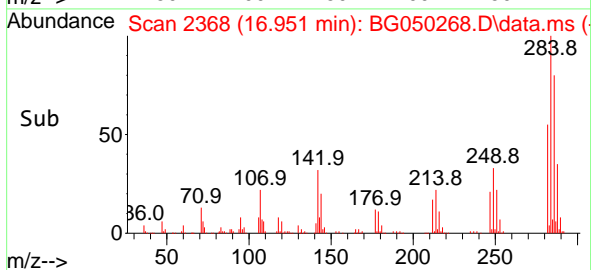
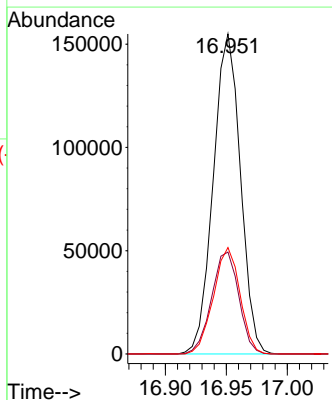
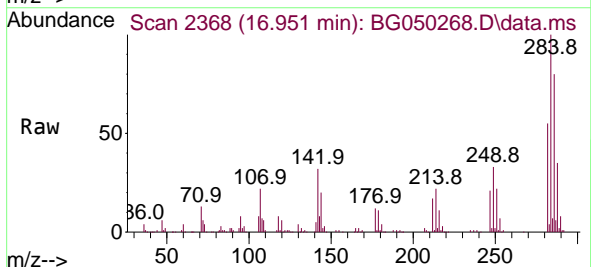
Instrument :
 BNA_G
 ClientSampled :
 SSTD080437

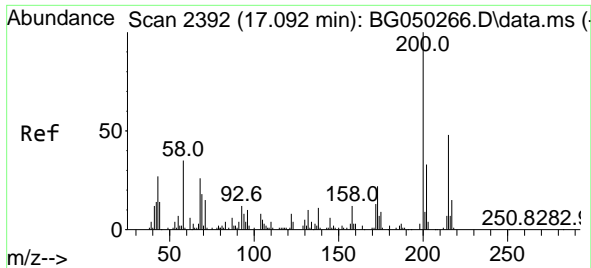
Tgt Ion	Resp	Lower	Upper
248	100		
250	97.9	80.2	120.2
141	68.2	60.6	90.8



#69
 Hexachlorobenzene
 Concen: 71.067 ng/ul
 RT: 16.951 min Scan# 2368
 Delta R.T. 0.006 min
 Lab File: BG050268.D
 Acq: 25 Sep 2021 18:00

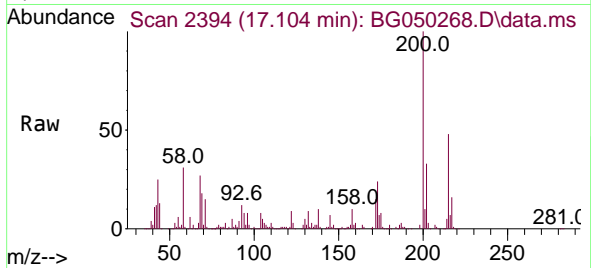
Tgt Ion	Resp	Lower	Upper
284	100		
142	31.9	28.7	43.1
249	33.3	25.5	38.3



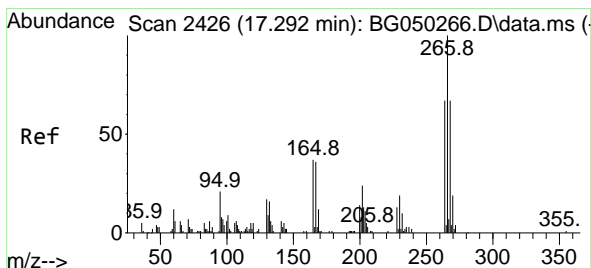
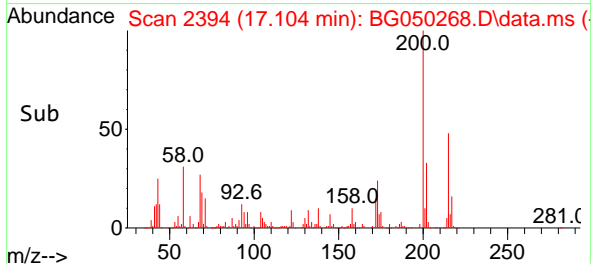
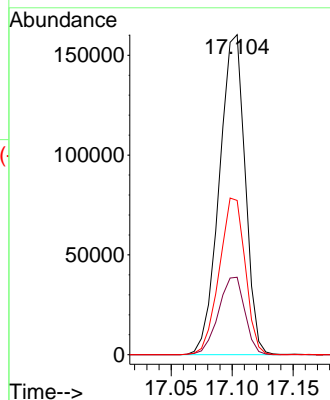


#70
 Atrazine
 Concen: 76.375 ng/uI
 RT: 17.104 min Scan# 2394
 Delta R.T. 0.012 min
 Lab File: BG050268.D
 Acq: 25 Sep 2021 18:00

Instrument :
 BNA_G
 ClientSampleId :
 SSTD080437

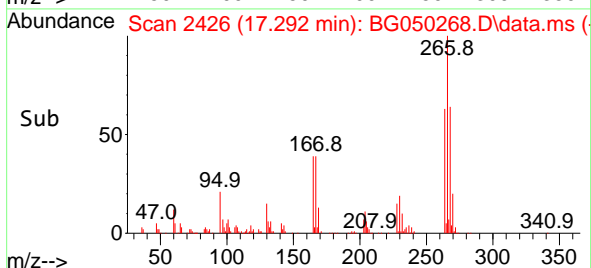
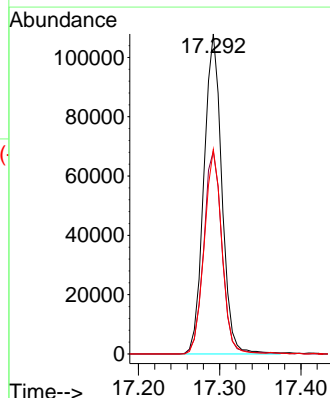
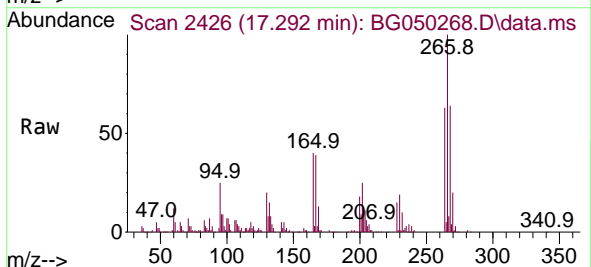


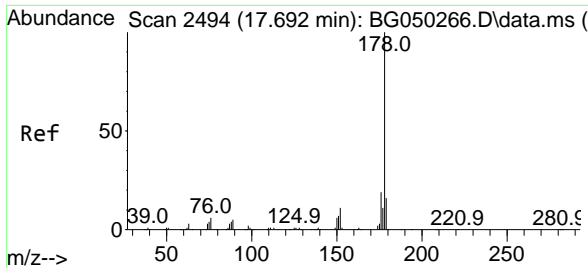
Tgt Ion:200 Resp: 236239
 Ion Ratio Lower Upper
 200 100
 173 24.2 19.3 28.9
 215 48.2 34.9 52.3



#71
 Pentachlorophenol
 Concen: 115.434 ng/uI
 RT: 17.292 min Scan# 2426
 Delta R.T. 0.000 min
 Lab File: BG050268.D
 Acq: 25 Sep 2021 18:00

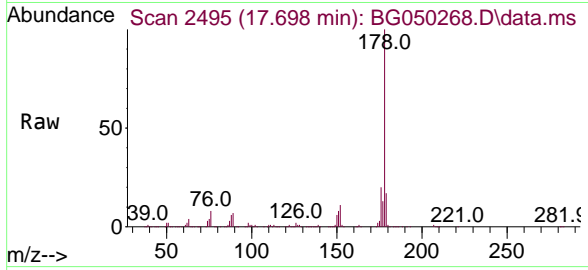
Tgt Ion:266 Resp: 165126
 Ion Ratio Lower Upper
 266 100
 264 63.4 54.1 81.1
 268 63.9 52.6 78.8





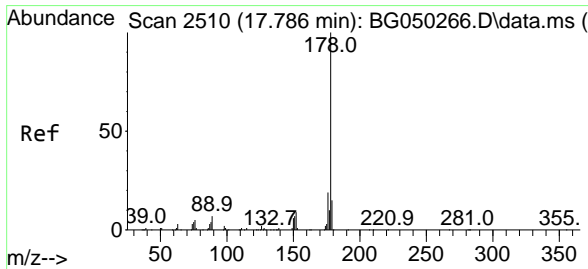
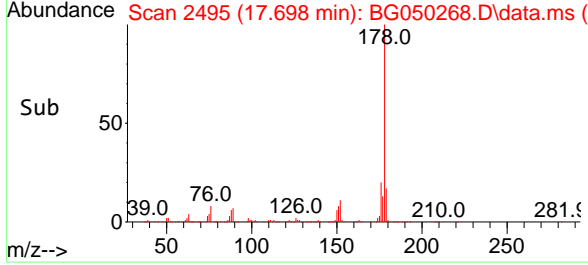
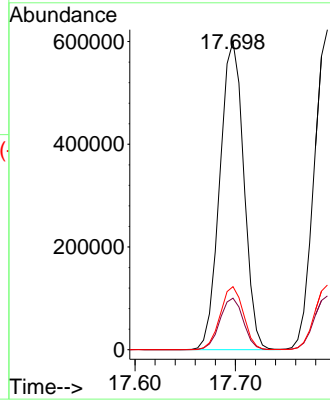
#72
 Phenanthrene
 Concen: 75.387 ng/u1
 RT: 17.698 min Scan# 2495
 Delta R.T. 0.006 min
 Lab File: BG050268.D
 Acq: 25 Sep 2021 18:00

Instrument :
 BNA_G
 ClientSampled :
 SSTD080437



Tgt Ion:178 Resp: 993897

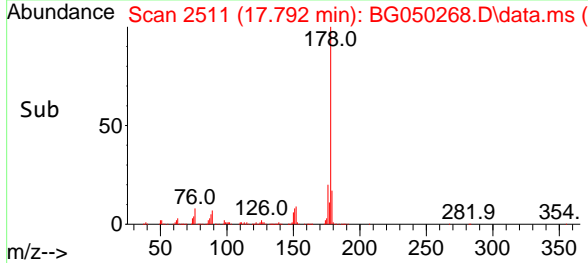
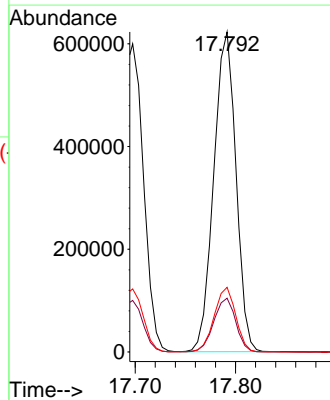
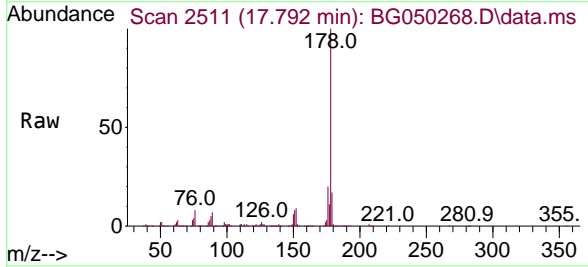
Ion	Ratio	Lower	Upper
178	100		
179	16.7	11.7	17.5
176	20.5	16.2	24.2

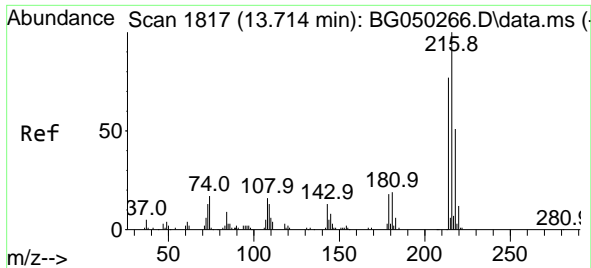


#74
 Anthracene
 Concen: 71.563 ng/u1
 RT: 17.792 min Scan# 2511
 Delta R.T. 0.006 min
 Lab File: BG050268.D
 Acq: 25 Sep 2021 18:00

Tgt Ion:178 Resp: 956096

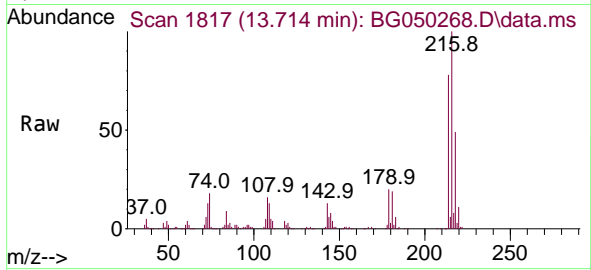
Ion	Ratio	Lower	Upper
178	100		
179	16.8	11.4	17.0
176	20.2	12.8	19.2#



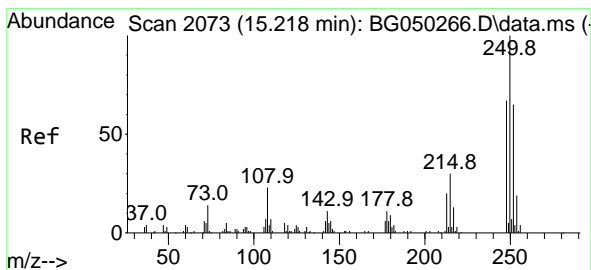
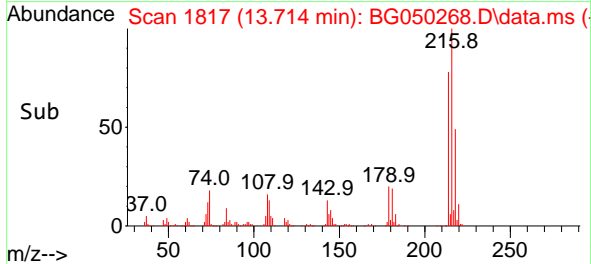
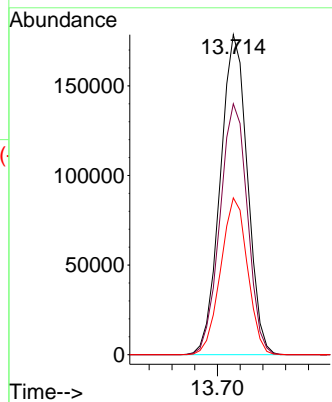


#75
 1,2,3,4-Tetrachlorobenzene
 Concen: 83.574 ng/uL
 RT: 13.714 min Scan# 1817
 Delta R.T. -0.000 min
 Lab File: BG050268.D
 Acq: 25 Sep 2021 18:00

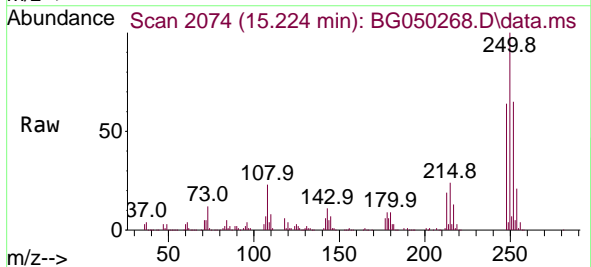
Instrument :
 BNA_G
 ClientSampled :
 SSTD080437



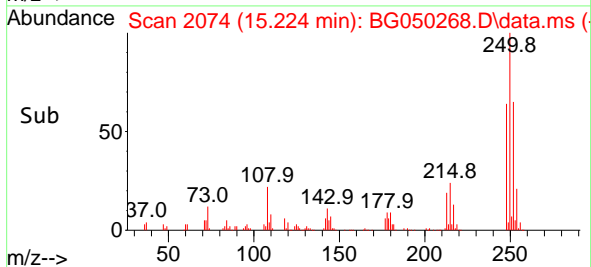
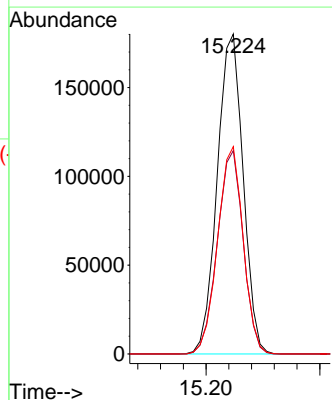
Tgt Ion:216 Resp: 296527
 Ion Ratio Lower Upper
 216 100
 214 78.4 70.9 106.3
 218 49.0 40.9 61.3

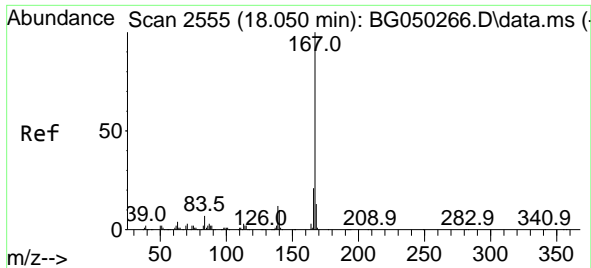


#76
 Pentachlorobenzene
 Concen: 75.872 ng/uL
 RT: 15.224 min Scan# 2074
 Delta R.T. 0.006 min
 Lab File: BG050268.D
 Acq: 25 Sep 2021 18:00



Tgt Ion:250 Resp: 285248
 Ion Ratio Lower Upper
 250 100
 248 63.6 51.5 77.3
 252 64.8 47.9 71.9

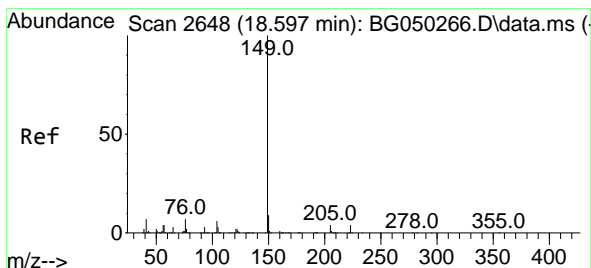
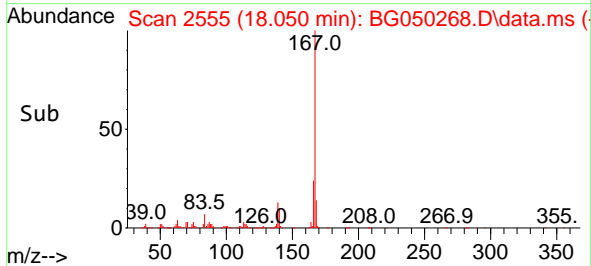
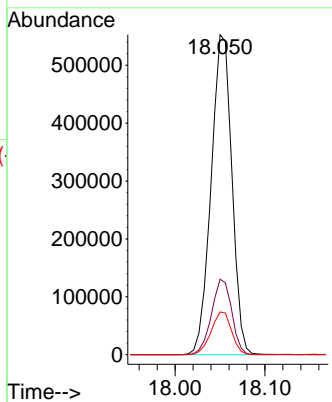
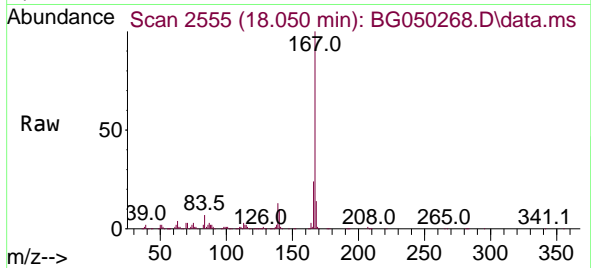




#77
 Carbazole
 Concen: 74.743 ng/ul
 RT: 18.050 min Scan# 2555
 Delta R.T. -0.000 min
 Lab File: BG050268.D
 Acq: 25 Sep 2021 18:00

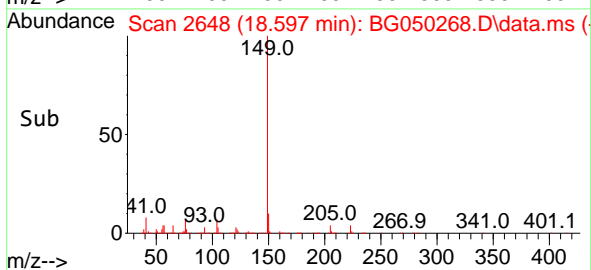
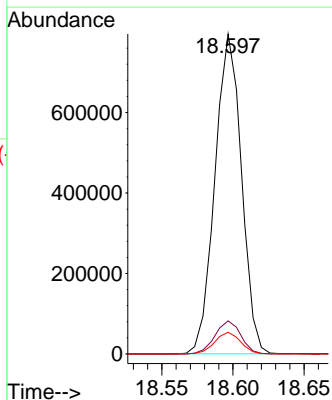
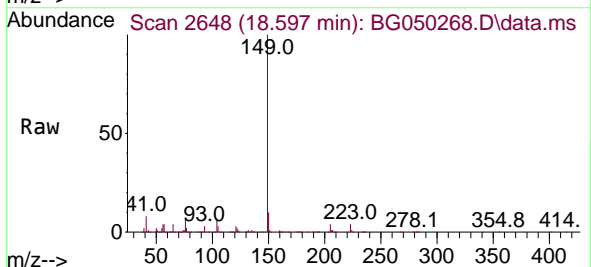
Instrument :
 BNA_G
 ClientSampled :
 SSTD080437

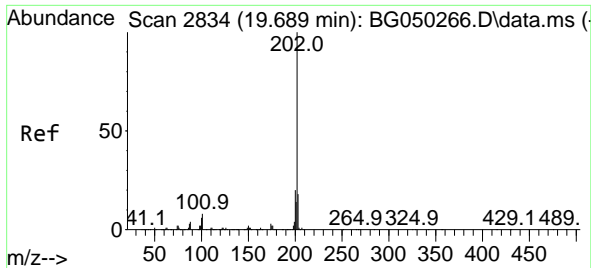
Tgt Ion	Resp	Lower	Upper
167	888567		
166	23.6	17.8	26.8
139	13.3	11.1	16.7



#78
 Di-n-butylphthalate
 Concen: 67.774 ng/ul
 RT: 18.597 min Scan# 2648
 Delta R.T. 0.000 min
 Lab File: BG050268.D
 Acq: 25 Sep 2021 18:00

Tgt Ion	Resp	Lower	Upper
149	1030472		
150	10.3	8.1	12.1
104	6.8	5.3	7.9



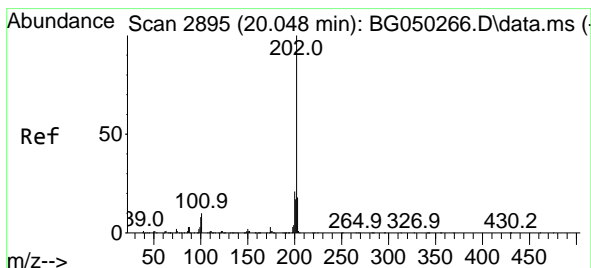
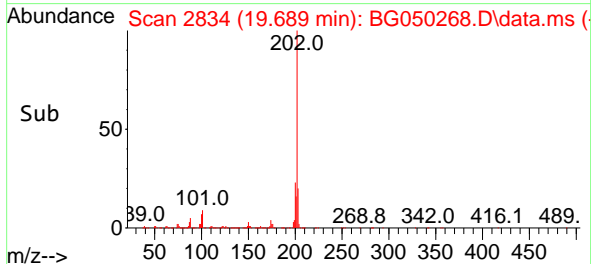
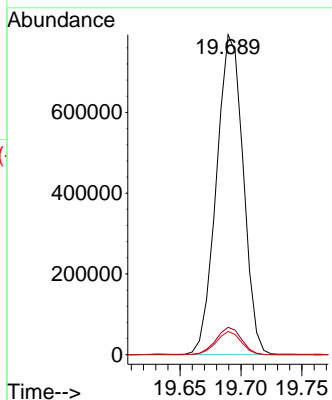
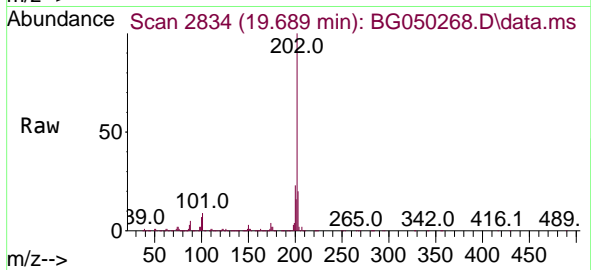


#80
 Fluoranthene
 Concen: 77.097 ng/u1
 RT: 19.689 min Scan# 2834
 Delta R.T. -0.000 min
 Lab File: BG050268.D
 Acq: 25 Sep 2021 18:00

Instrument :
 BNA_G
 ClientSampled :
 SSTD080437

Tgt Ion:202 Resp: 1209244

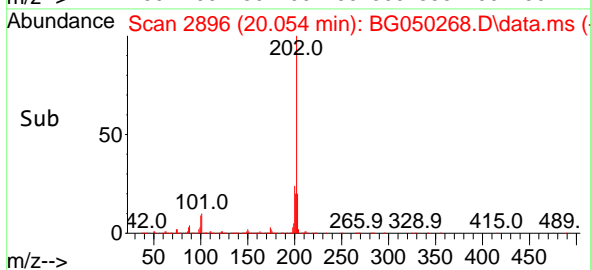
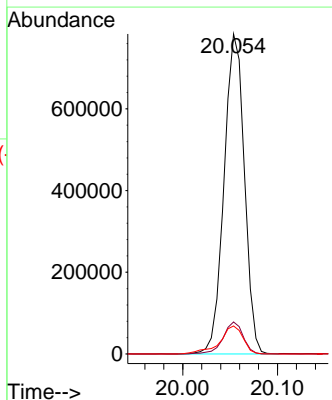
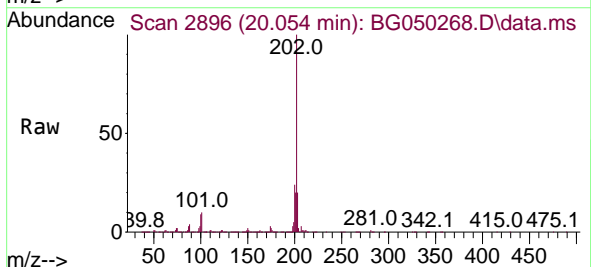
Ion	Ratio	Lower	Upper
202	100		
101	8.5	4.3	6.5#
100	7.2	3.5	5.3#

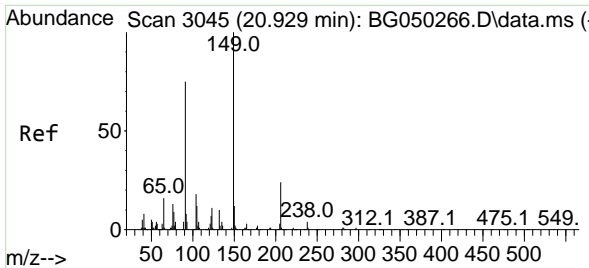


#82
 Pyrene
 Concen: 75.100 ng/u1
 RT: 20.054 min Scan# 2896
 Delta R.T. 0.006 min
 Lab File: BG050268.D
 Acq: 25 Sep 2021 18:00

Tgt Ion:202 Resp: 1167228

Ion	Ratio	Lower	Upper
202	100		
101	10.0	5.4	8.0#
100	8.8	5.0	7.6#

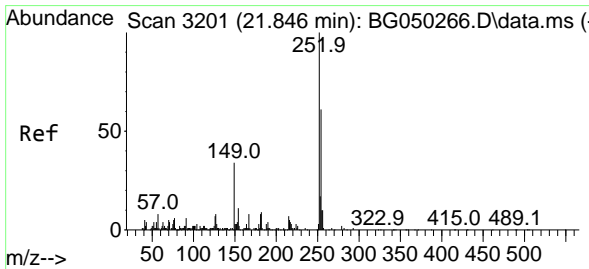
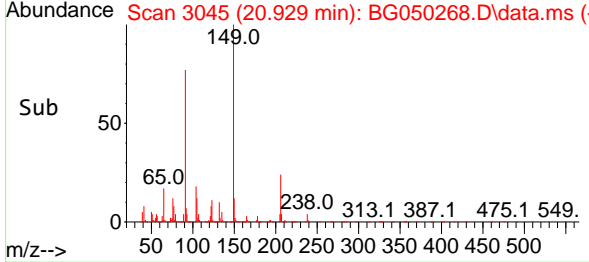
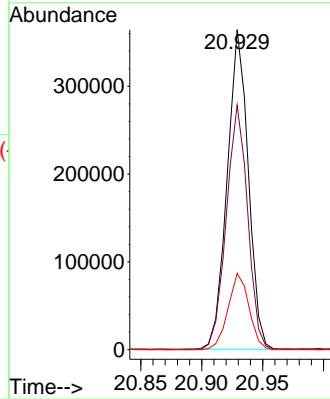
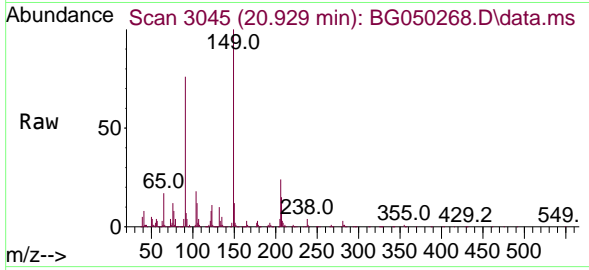




#83
 Butylbenzylphthalate
 Concen: 71.504 ng/ul
 RT: 20.929 min Scan# 3045
 Delta R.T. 0.000 min
 Lab File: BG050268.D
 Acq: 25 Sep 2021 18:00

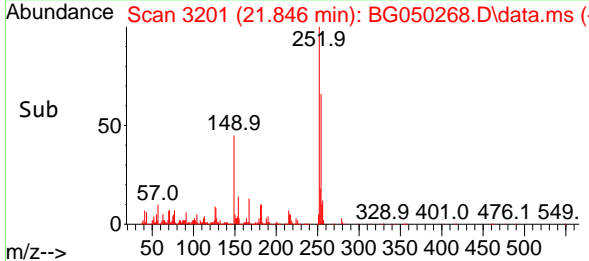
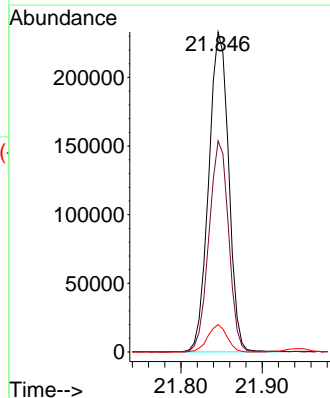
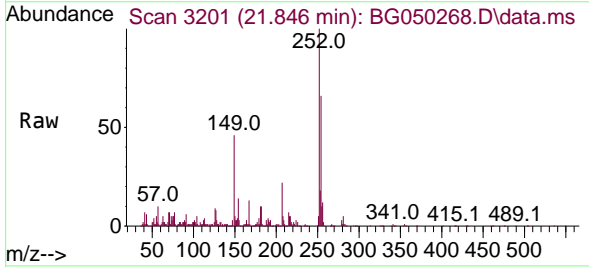
Instrument :
 BNA_G
 ClientSampled :
 SSTD080437

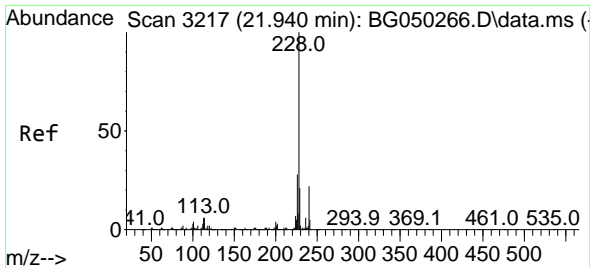
Tgt Ion	Resp	Lower	Upper
149	100		
91	76.4	60.6	90.8
206	23.9	16.8	25.2



#84
 3,3'-Dichlorobenzidine
 Concen: 71.217 ng/ul
 RT: 21.846 min Scan# 3201
 Delta R.T. 0.000 min
 Lab File: BG050268.D
 Acq: 25 Sep 2021 18:00

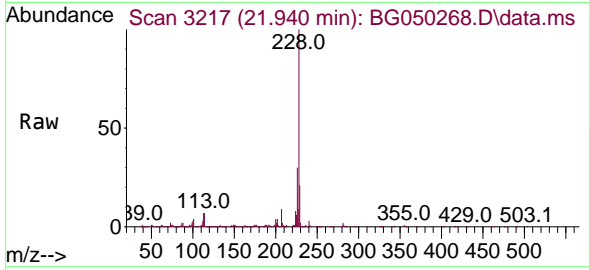
Tgt Ion	Resp	Lower	Upper
252	100		
254	65.9	54.2	81.2
126	8.6	5.4	8.0#





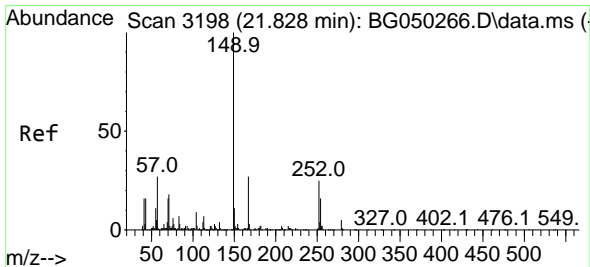
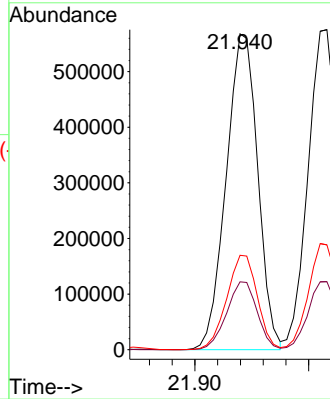
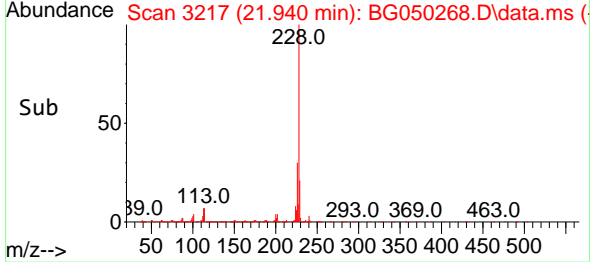
#85
 Benzo(a)anthracene
 Concen: 74.704 ng/ul
 RT: 21.940 min Scan# 3217
 Delta R.T. 0.000 min
 Lab File: BG050268.D
 Acq: 25 Sep 2021 18:00

Instrument :
 BNA_G
ClientSampled :
 SSTD080437

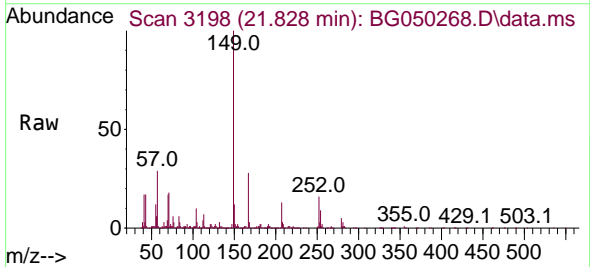


Tgt Ion:228 Resp: 1094856

Ion	Ratio	Lower	Upper
228	100		
229	21.5	16.2	24.4
226	29.9	21.0	31.4

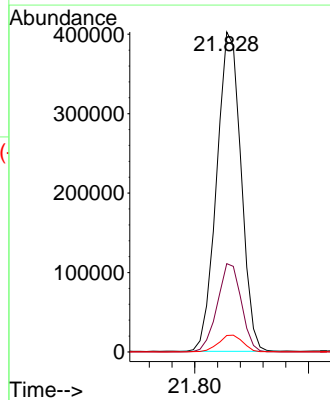
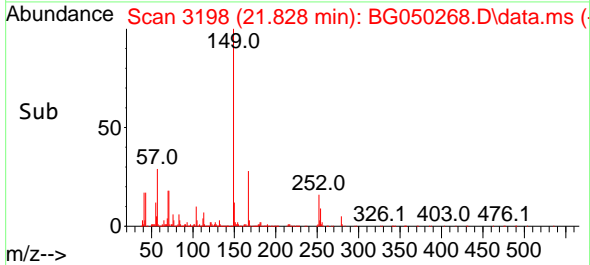


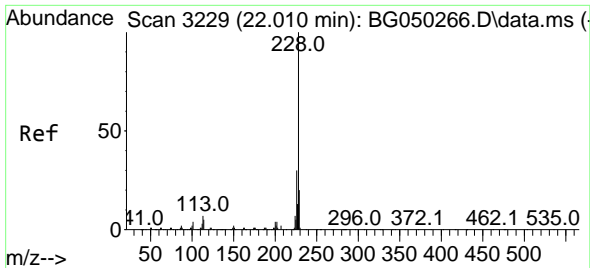
#86
 Bis(2-ethylhexyl)phthalate
 Concen: 71.107 ng/ul
 RT: 21.828 min Scan# 3198
 Delta R.T. -0.000 min
 Lab File: BG050268.D
 Acq: 25 Sep 2021 18:00



Tgt Ion:149 Resp: 598946

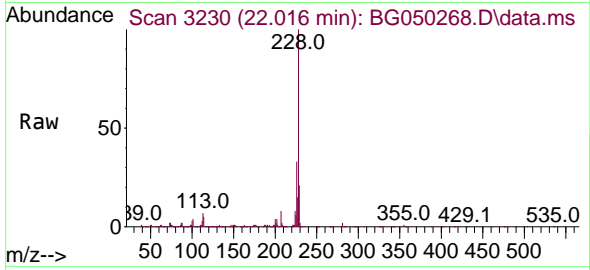
Ion	Ratio	Lower	Upper
149	100		
167	27.6	20.4	30.6
279	5.2	3.7	5.5





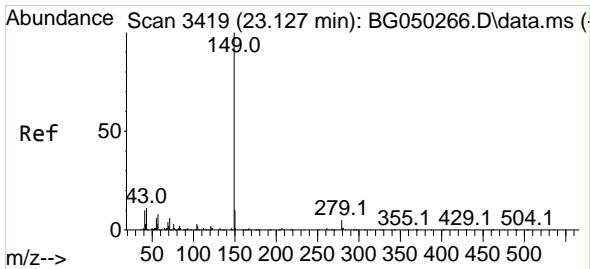
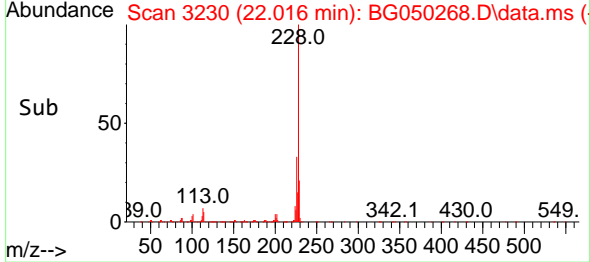
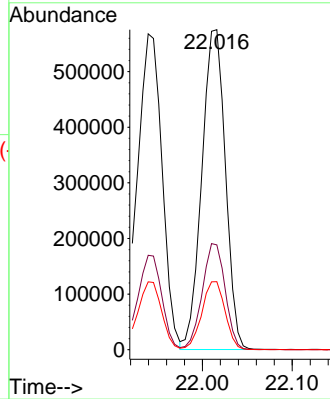
#87
 Chrysene
 Concen: 75.756 ng/u1
 RT: 22.016 min Scan# 3230
 Delta R.T. 0.006 min
 Lab File: BG050268.D
 Acq: 25 Sep 2021 18:00

Instrument :
 BNA_G
 ClientSampled :
 SSTD080437



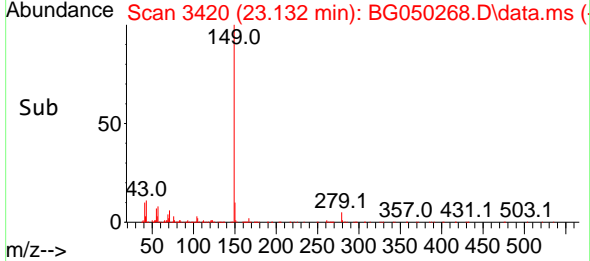
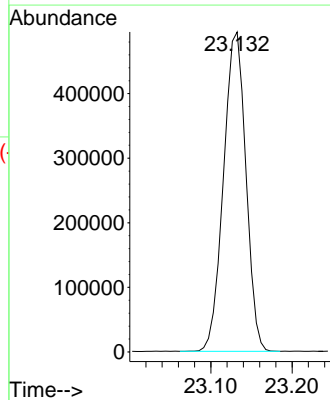
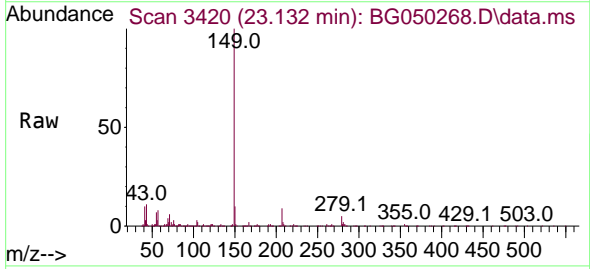
Tgt Ion:228 Resp: 1049543

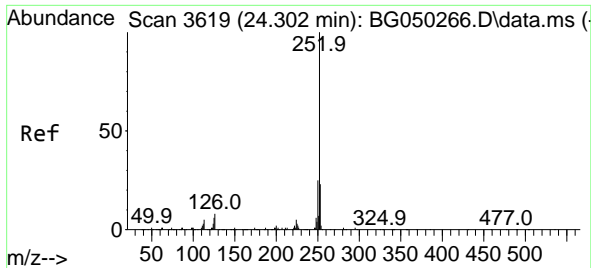
Ion	Ratio	Lower	Upper
228	100		
226	32.8	23.0	34.4
229	21.3	17.8	26.6



#89
 Di-n-octyl phthalate
 Concen: 66.622 ng/u1
 RT: 23.132 min Scan# 3420
 Delta R.T. 0.006 min
 Lab File: BG050268.D
 Acq: 25 Sep 2021 18:00

Tgt Ion:149 Resp: 947078

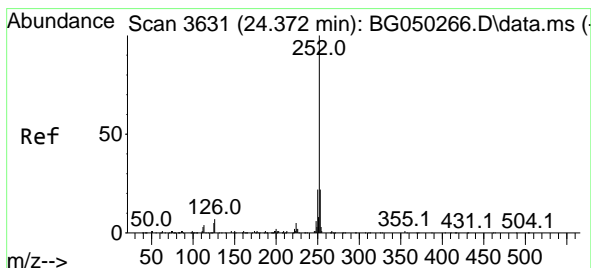
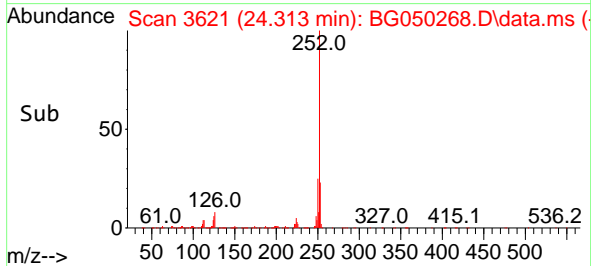
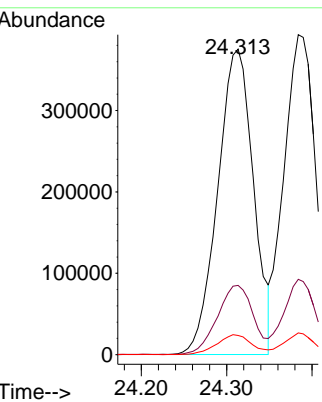
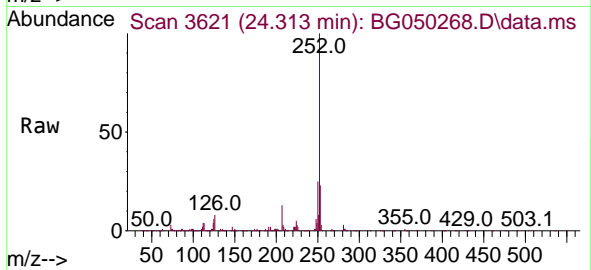




#90
 Benzo(b)fluoranthene
 Concen: 71.227 ng/ul
 RT: 24.313 min Scan# 3621
 Delta R.T. 0.012 min
 Lab File: BG050268.D
 Acq: 25 Sep 2021 18:00

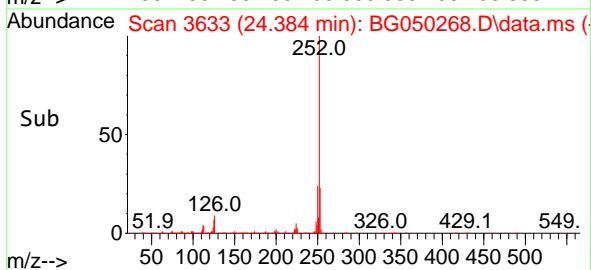
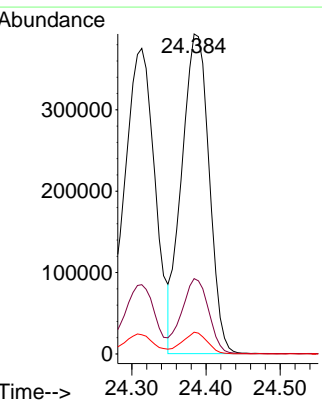
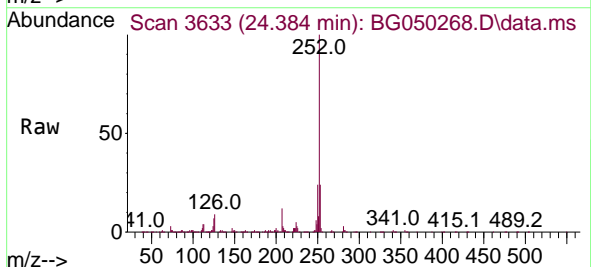
Instrument :
 BNA_G
ClientSampled :
 SSTD080437

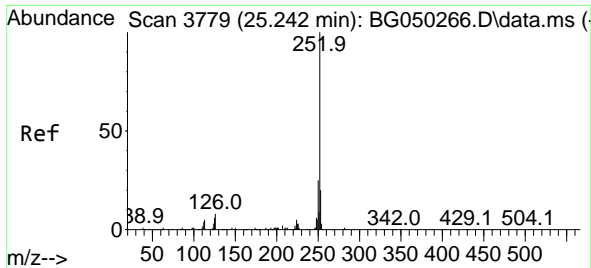
Tgt Ion	Resp	Lower	Upper
252	1091791		
253	22.7	18.1	27.1
125	6.3	3.4	5.0#



#91
 Benzo(k)fluoranthene
 Concen: 69.349 ng/ul
 RT: 24.384 min Scan# 3633
 Delta R.T. 0.012 min
 Lab File: BG050268.D
 Acq: 25 Sep 2021 18:00

Tgt Ion	Resp	Lower	Upper
252	1010439		
253	23.6	17.7	26.5
125	6.8	4.1	6.1#



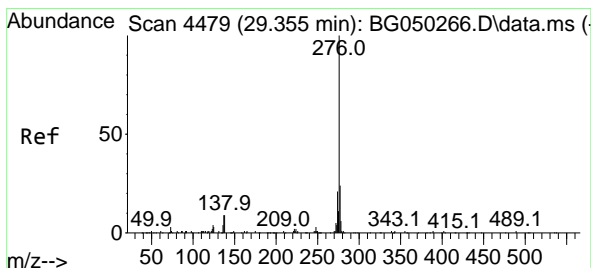
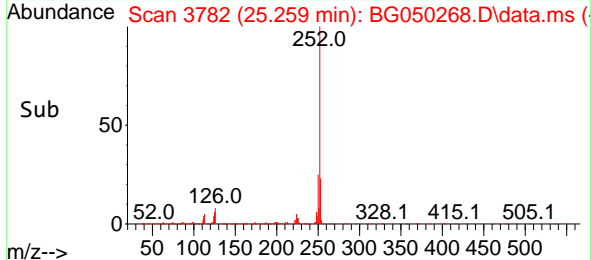
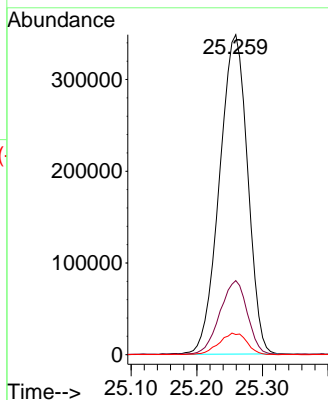
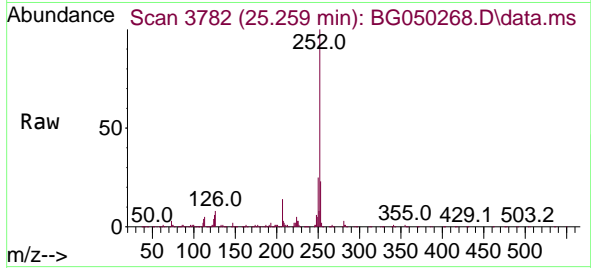


#93
 Benzo(a)pyrene
 Concen: 77.932 ng/u1
 RT: 25.259 min Scan# 3782
 Delta R.T. 0.018 min
 Lab File: BG050268.D
 Acq: 25 Sep 2021 18:00

Instrument :
 BNA_G
 ClientSampled :
 SSTD080437

Tgt Ion:252 Resp: 1037434

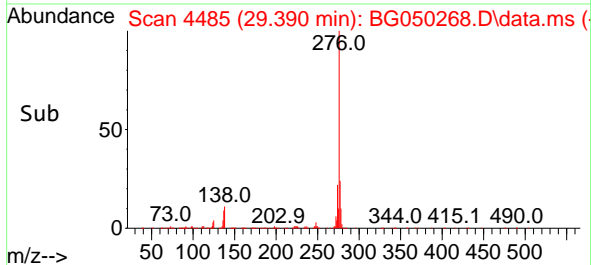
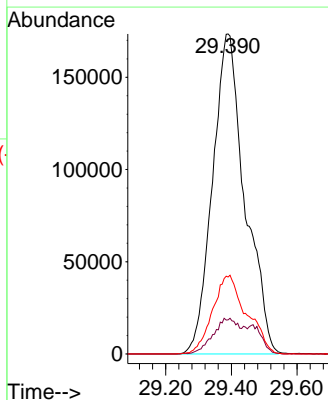
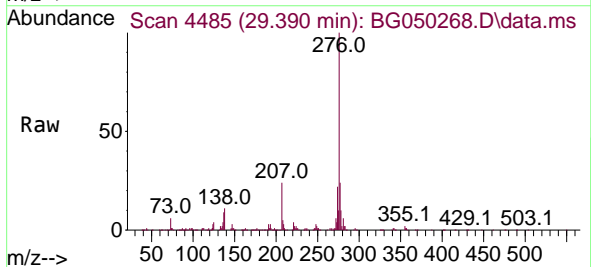
Ion	Ratio	Lower	Upper
252	100		
253	23.1	17.0	25.4
125	6.3	4.4	6.6

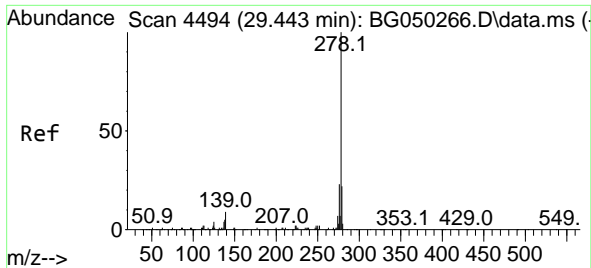


#94
 Indeno(1,2,3-cd)pyrene
 Concen: 67.619 ng/u1
 RT: 29.390 min Scan# 4485
 Delta R.T. 0.035 min
 Lab File: BG050268.D
 Acq: 25 Sep 2021 18:00

Tgt Ion:276 Resp: 1187396

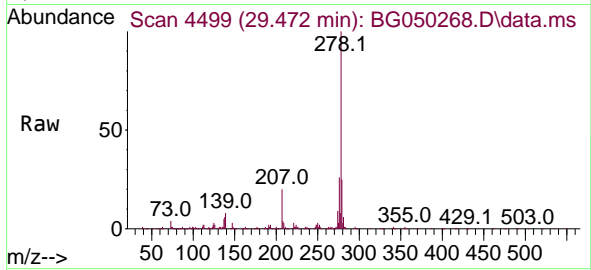
Ion	Ratio	Lower	Upper
276	100		
138	10.6	5.5	8.3#
277	24.1	18.6	27.8



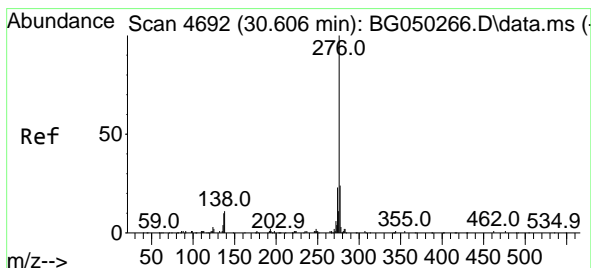
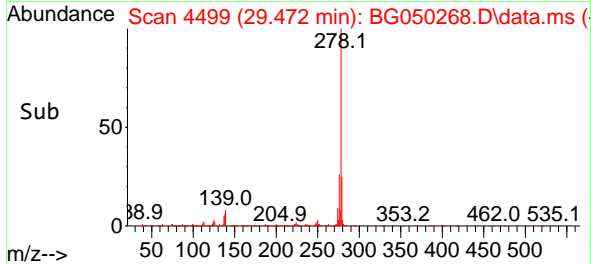
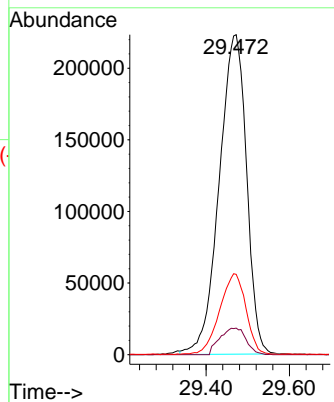


#95
 Dibenzo(a,h)anthracene
 Concen: 69.125 ng/ul
 RT: 29.472 min Scan# 4499
 Delta R.T. 0.029 min
 Lab File: BG050268.D
 Acq: 25 Sep 2021 18:00

Instrument :
 BNA_G
 ClientSampled :
 SSTD080437



Tgt Ion:278 Resp: 1016158
 Ion Ratio Lower Upper
 278 100
 139 8.3 5.2 7.8#
 279 25.1 19.0 28.4



#96
 Benzo(g,h,i)perylene
 Concen: 69.810 ng/ul
 RT: 30.641 min Scan# 4698
 Delta R.T. 0.035 min
 Lab File: BG050268.D
 Acq: 25 Sep 2021 18:00

Tgt Ion:276 Resp: 1030607
 Ion Ratio Lower Upper
 276 100
 138 11.7 8.6 13.0
 277 23.8 17.4 26.0

