

Data Path : Z:\svoasrv\HPCHEM1\BNA_G\Data\BG092823\
 Data File : BG059246.D
 Acq On : 28 Sep 2023 23:06
 Operator : MA/JU
 Sample : 04480-11
 Misc :
 ALS Vial : 22 Sample Multiplier: 1

Instrument :
 BNA_G
 ClientSampleId :
 SSTD020579

Quant Time: Sep 29 00:44:06 2023
 Quant Method : Z:\svoasrv\HPCHEM1\BNA_G\Methods\SFAM-EPA-BG092723.MA.M
 Quant Title : SVOA CALIBRATION
 QLast Update : Thu Sep 28 04:33:25 2023
 Response via : Initial Calibration

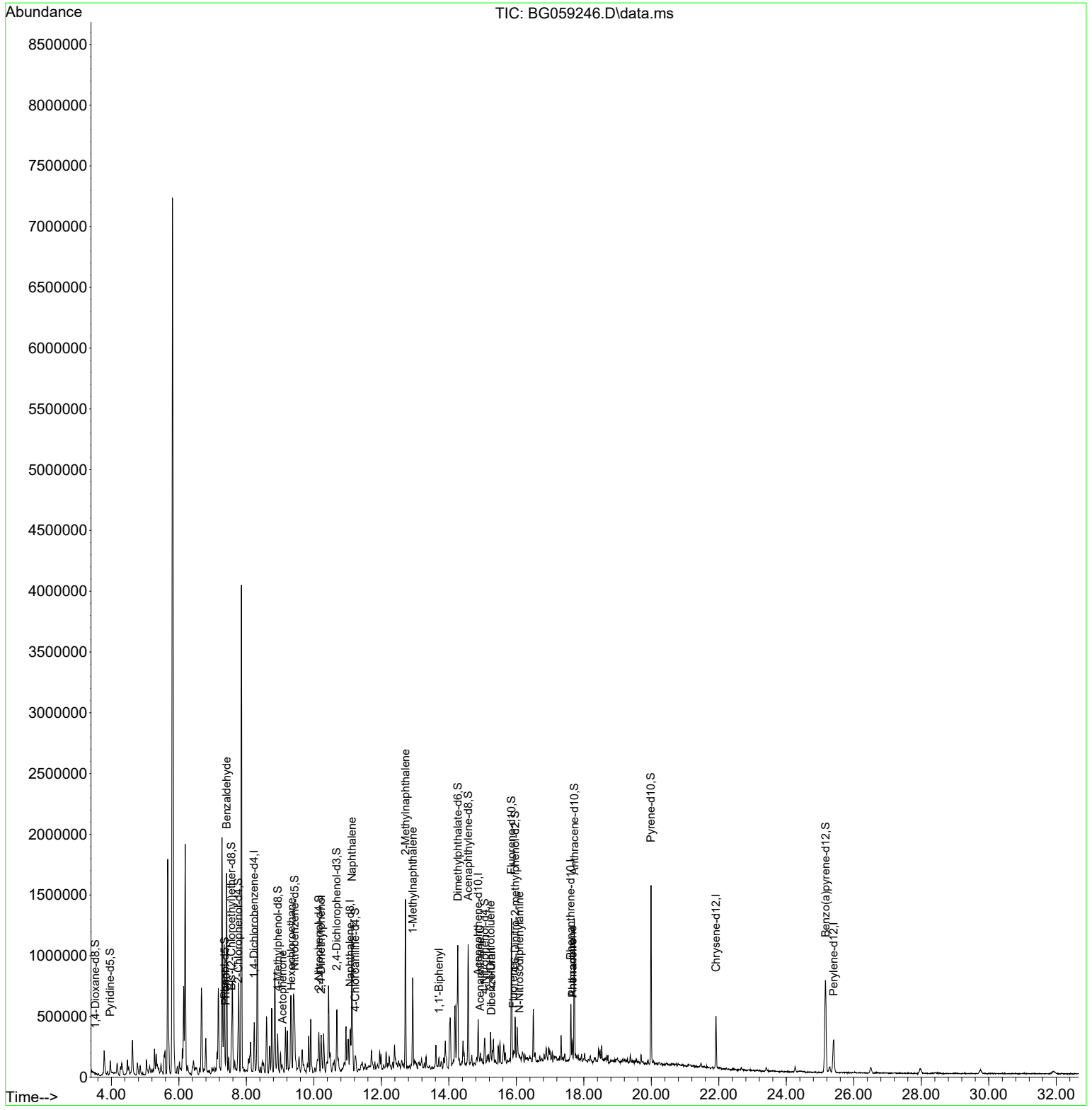
Compound	R.T.	QIon	Response	Conc	Units	Dev(Min)
Internal Standards						
1) 1,4-Dichlorobenzene-d4	8.230	152	43524	20.000	ng/ul	# 0.00
20) Naphthalene-d8	11.074	136	207243	20.000	ng/ul	0.00
38) Acenaphthene-d10	14.869	164	124715	20.000	ng/ul	0.00
64) Phenanthrene-d10	17.613	188	282274	20.000	ng/ul	0.00
79) Chrysene-d12	21.914	240	259006	20.000	ng/ul	0.00
88) Perylene-d12	25.398	264	307098	20.000	ng/ul	-0.01
System Monitoring Compounds						
3) 1,4-Dioxane-d8	3.524	96	5076	4.402	ng/uL	0.00
4) Pyridine-d5	3.964	84	52371	15.564	ng/ul	0.00
7) Phenol-d5	7.360	99	53356	12.247	ng/ul	0.00
9) Bis-(2-Chloroethyl)eth...	7.554	67	134284	48.250	ng/ul	0.00
11) 2-Chlorophenol-d4	7.754	132	123824	42.281	ng/ul	0.00
15) 4-Methylphenol-d8	8.929	113	88534	26.289	ng/ul	0.00
21) Nitrobenzene-d5	9.429	128	87658	59.940	ng/ul	0.00
24) 2-Nitrophenol-d4	10.151	143	81437	56.725	ng/ul	0.00
28) 2,4-Dichlorophenol-d3	10.674	165	149105	50.557	ng/ul	0.00
31) 4-Chloroaniline-d4	11.226	131	44153	9.253	ng/ul	0.00
46) Dimethylphthalate-d6	14.264	166	538656	59.739	ng/ul	0.00
49) Acenaphthylene-d8	14.570	160	626857	55.387	ng/ul	0.00
54) 4-Nitrophenol-d4	15.063	143	20355	12.927	ng/ul	0.00
60) Fluorene-d10	15.856	176	492011	57.331	ng/ul	0.00
65) 4,6-Dinitro-2-methylph...	15.962	200	79108	54.522	ng/ul	0.00
73) Anthracene-d10	17.719	188	711199	55.295	ng/ul	0.00
81) Pyrene-d10	19.987	212	836614	57.679	ng/ul	0.00
92) Benzo(a)pyrene-d12	25.163	264	825945	55.968	ng/ul	0.00
Target Compounds						
6) Benzaldehyde	7.413	77	109220	57.087	ng/ul#	1
8) Phenol	7.390	94	20458	4.720	ng/ul#	75
16) Acetophenone	9.076	105	9158	1.756	ng/ul	93
19) Hexachloroethane	9.335	117	95670	78.646	ng/ul#	7
26) 2,4-Dimethylphenol	10.210	107	32651	9.653	ng/ul	95
30) Naphthalene	11.127	128	897248	80.747	ng/ul	97
36) 2-Methylnaphthalene	12.713	142	643025	88.336	ng/ul	96
37) 1-Methylnaphthalene	12.930	142	328571	44.473	ng/ul#	98
43) 1,1'-Biphenyl	13.706	154	23570	2.340	ng/ul#	96
52) Acenaphthene	14.928	153	17486	2.109	ng/ul#	80
56) Dibenzofuran	15.263	168	17275	1.572	ng/ul	91
57) 2,4-Dinitrotoluene	15.239	165	3461	1.488	ng/ul#	1
61) Fluorene	15.909	166	33419	3.621	ng/ul	98
67) N-Nitrosodiphenylamine	16.091	169	15256	2.028	ng/ul#	34
72) Phenanthrene	17.660	178	101584	6.558	ng/ul	95
74) Anthracene	17.660	178	101742	6.361	ng/ul	95

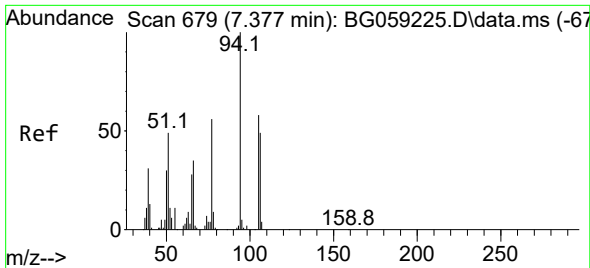
(#) = qualifier out of range (m) = manual integration (+) = signals summed

Data Path : Z:\svoasrv\HPCHEM1\BNA_G\Data\BG092823\
 Data File : BG059246.D
 Acq On : 28 Sep 2023 23:06
 Operator : MA/JU
 Sample : 04480-11
 Misc :
 ALS Vial : 22 Sample Multiplier: 1

Instrument :
 BNA_G
ClientSampleId :
 SSTD020579

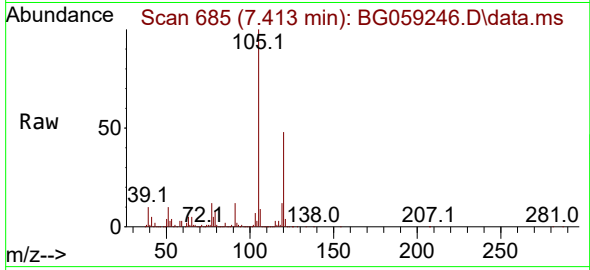
Quant Time: Sep 29 00:44:06 2023
 Quant Method : Z:\svoasrv\HPCHEM1\BNA_G\Methods\SFAM-EPA-BG092723.MA.M
 Quant Title : SVOA CALIBRATION
 QLast Update : Thu Sep 28 04:33:25 2023
 Response via : Initial Calibration



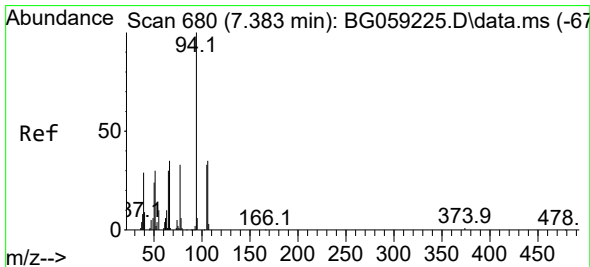
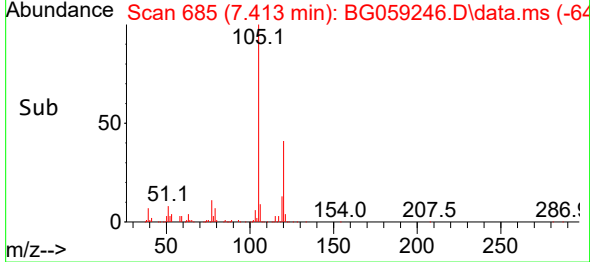
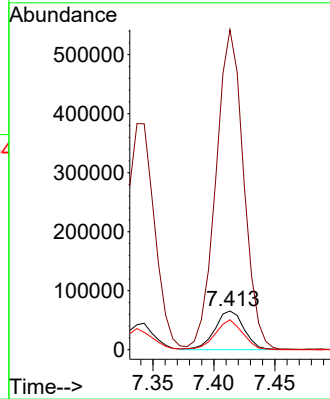


#6
Benzaldehyde
Concen: 57.087 ng/u1
RT: 7.413 min Scan# 685
Delta R.T. 0.034 min
Lab File: BG059246.D
Acq: 28 Sep 2023 23:06

Instrument :
BNA_G
ClientSampleId :
SSTD020579

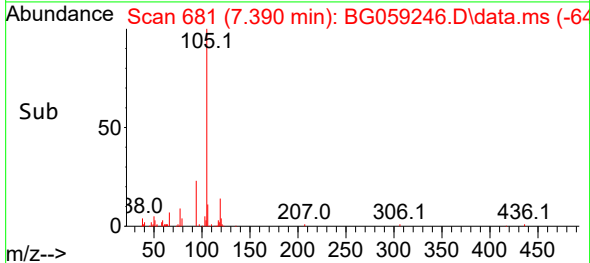
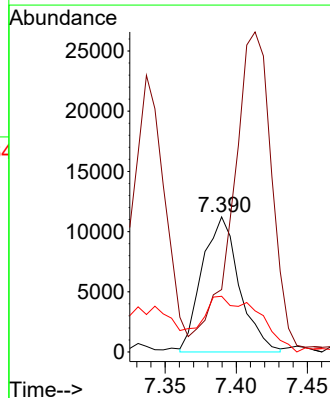
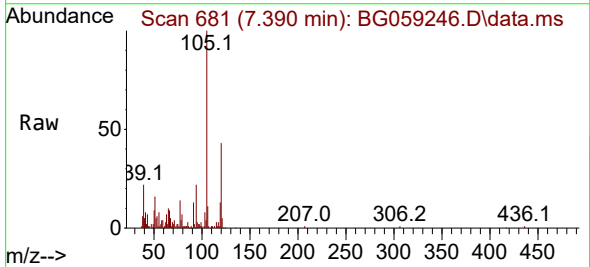


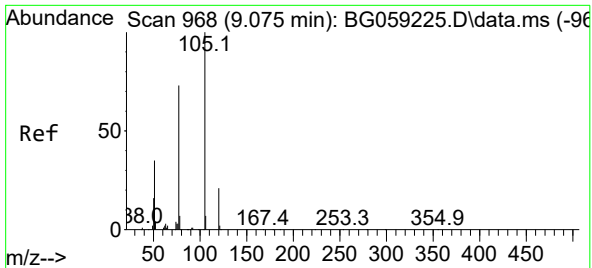
Tgt Ion: 77 Resp: 109220
Ion Ratio Lower Upper
77 100
105 825.3 81.4 122.2#
106 77.4 78.3 117.5#



#8
Phenol
Concen: 4.720 ng/u1
RT: 7.390 min Scan# 681
Delta R.T. 0.005 min
Lab File: BG059246.D
Acq: 28 Sep 2023 23:06

Tgt Ion: 94 Resp: 20458
Ion Ratio Lower Upper
94 100
65 46.2 23.6 35.4#
66 41.2 24.6 37.0#





#16
 Acetophenone
 Concen: 1.756 ng/ul
 RT: 9.076 min Scan# 901
 Delta R.T. -0.001 min
 Lab File: BG059246.D
 Acq: 28 Sep 2023 23:06

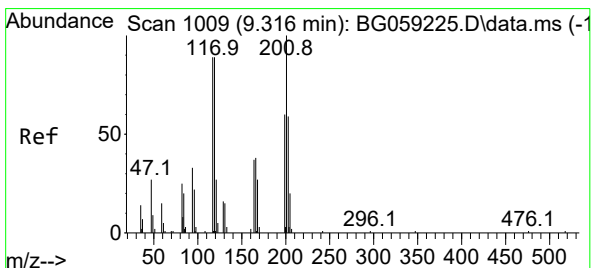
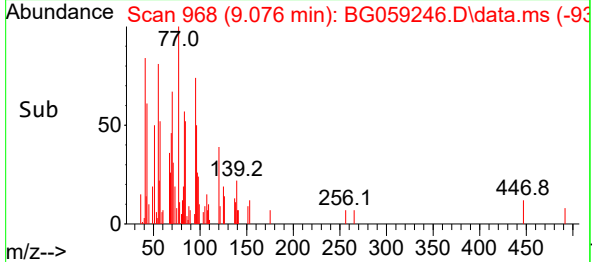
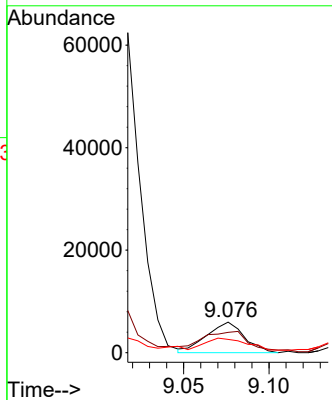
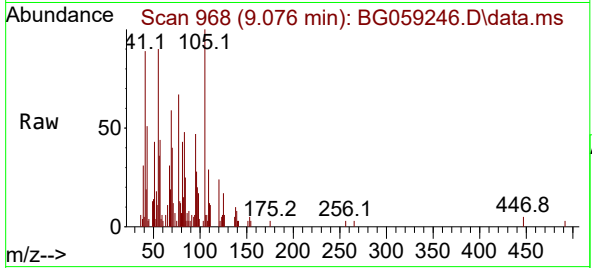
Instrument :

BNA_G

ClientSampleId :

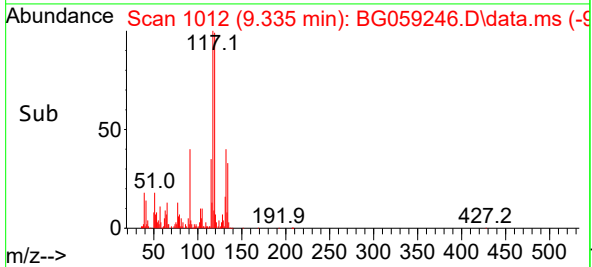
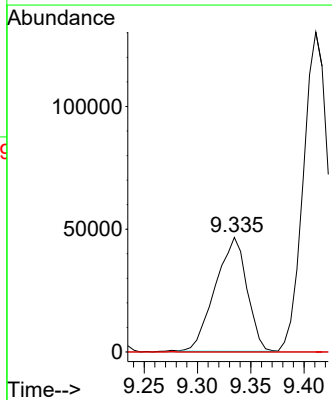
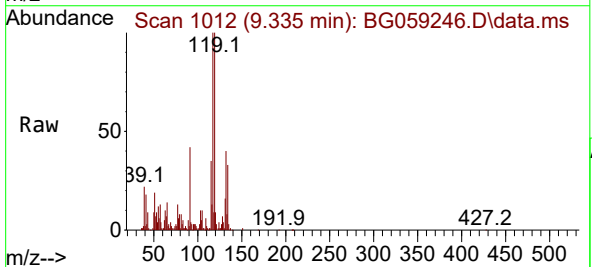
SSTD020579

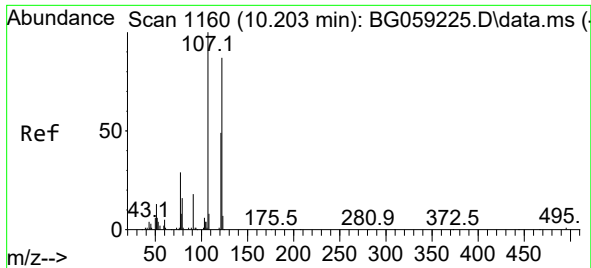
Tgt Ion	Resp	Lower	Upper
105	100		
77	66.8	58.8	88.2
51	43.4	32.6	48.8



#19
 Hexachloroethane
 Concen: 78.646 ng/ul
 RT: 9.335 min Scan# 1012
 Delta R.T. 0.016 min
 Lab File: BG059246.D
 Acq: 28 Sep 2023 23:06

Tgt Ion	Resp	Lower	Upper
117	100		
201	0.0	78.2	117.4#
199	0.0	53.5	80.3#





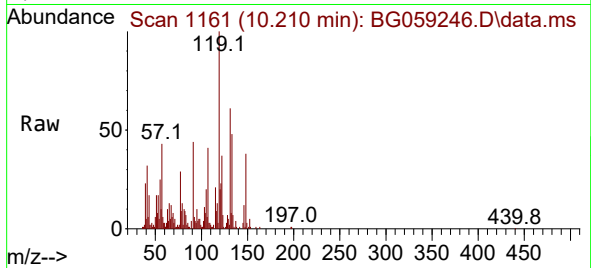
#26
 2,4-Dimethylphenol
 Concen: 9.653 ng/uI
 RT: 10.210 min Scan# 1161
 Delta R.T. -0.001 min
 Lab File: BG059246.D
 Acq: 28 Sep 2023 23:06

Instrument :

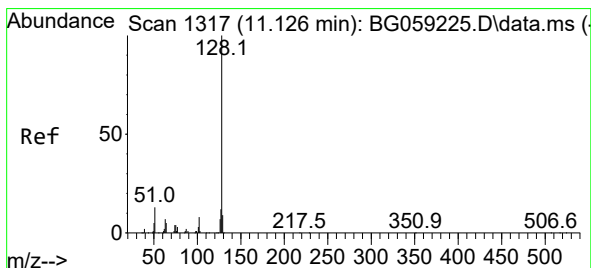
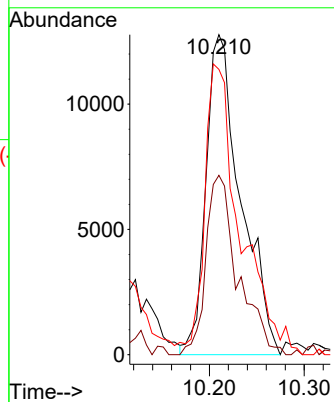
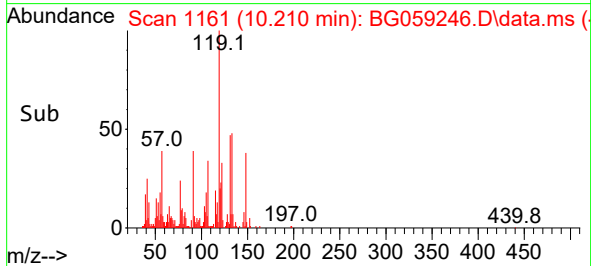
BNA_G

ClientSampleId :

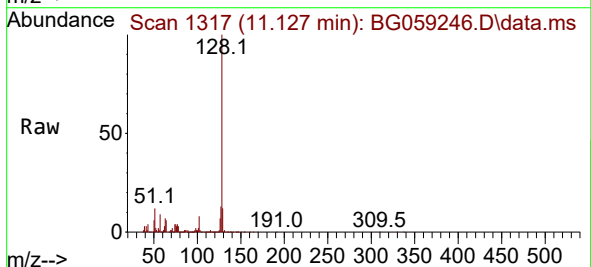
SSTD020579



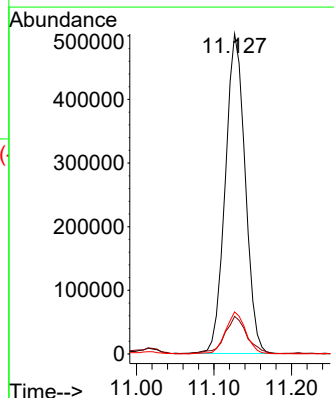
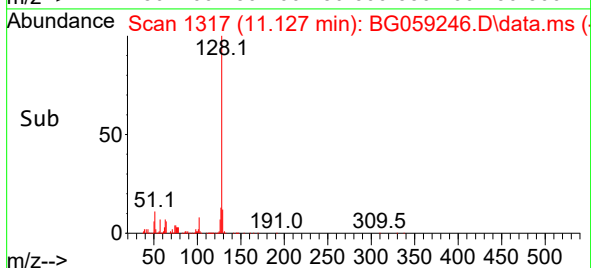
Tgt Ion:107 Resp: 32651
 Ion Ratio Lower Upper
 107 100
 121 56.1 42.3 63.5
 122 89.1 75.2 112.8

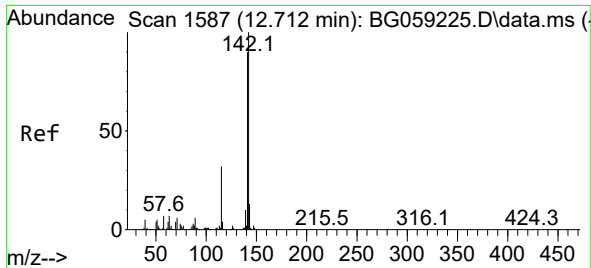


#30
 Naphthalene
 Concen: 80.747 ng/uI
 RT: 11.127 min Scan# 1317
 Delta R.T. -0.001 min
 Lab File: BG059246.D
 Acq: 28 Sep 2023 23:06



Tgt Ion:128 Resp: 897248
 Ion Ratio Lower Upper
 128 100
 129 11.8 8.0 12.0
 127 13.2 11.1 16.7

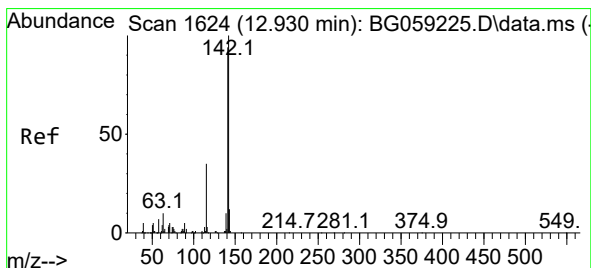
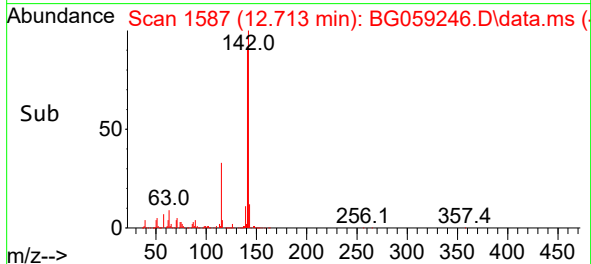
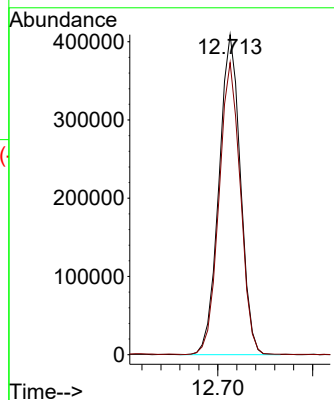
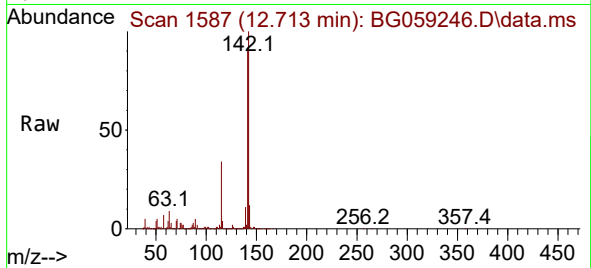




#36
 2-Methylnaphthalene
 Concen: 88.336 ng/ul
 RT: 12.713 min Scan# 1587
 Delta R.T. -0.001 min
 Lab File: BG059246.D
 Acq: 28 Sep 2023 23:06

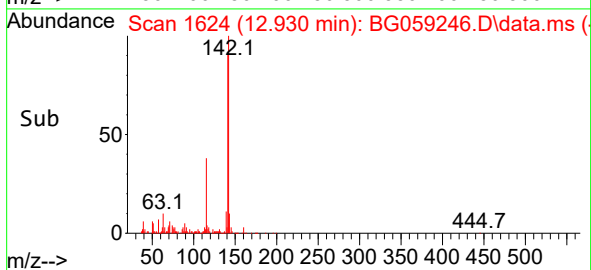
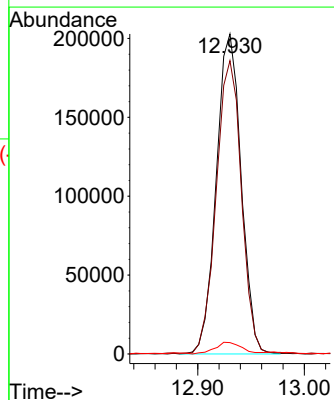
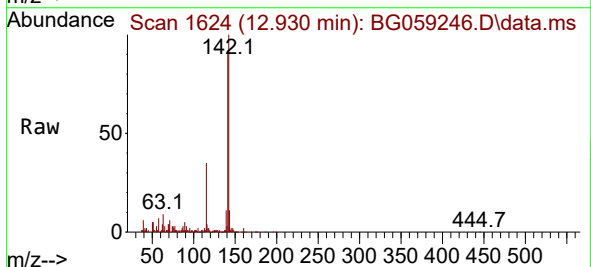
Instrument :
 BNA_G
 ClientSampleId :
 SSTD020579

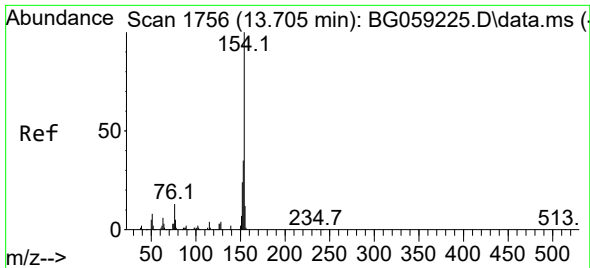
Tgt Ion:142 Resp: 643025
 Ion Ratio Lower Upper
 142 100
 141 91.3 70.2 105.2



#37
 1-Methylnaphthalene
 Concen: 44.473 ng/ul
 RT: 12.930 min Scan# 1624
 Delta R.T. -0.001 min
 Lab File: BG059246.D
 Acq: 28 Sep 2023 23:06

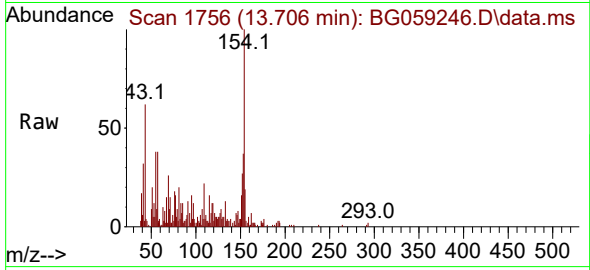
Tgt Ion:142 Resp: 328571
 Ion Ratio Lower Upper
 142 100
 141 91.6 71.6 107.4
 116 3.6 2.3 3.5#



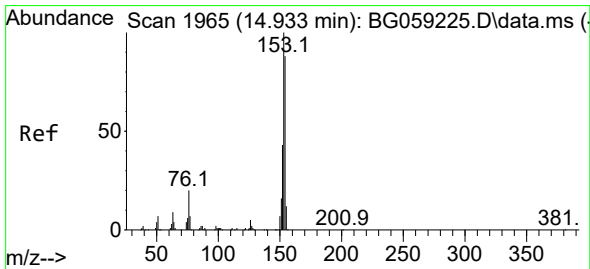
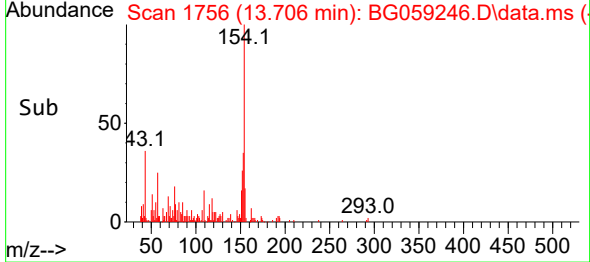
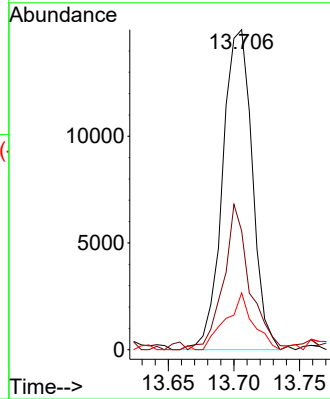


#43
 1,1'-Biphenyl
 Concen: 2.340 ng/u1
 RT: 13.706 min Scan# 1
 Delta R.T. -0.001 min
 Lab File: BG059246.D
 Acq: 28 Sep 2023 23:06

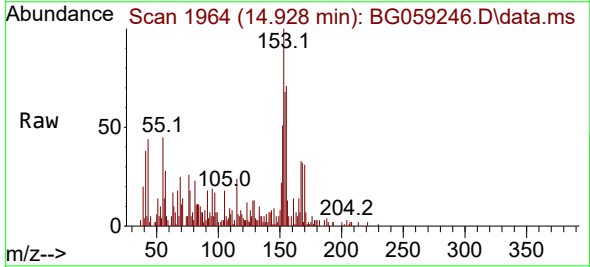
Instrument :
 BNA_G
 ClientSampleId :
 SSTD020579



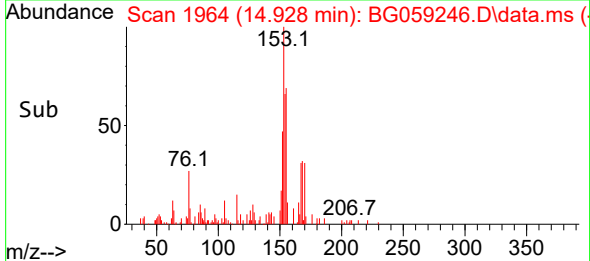
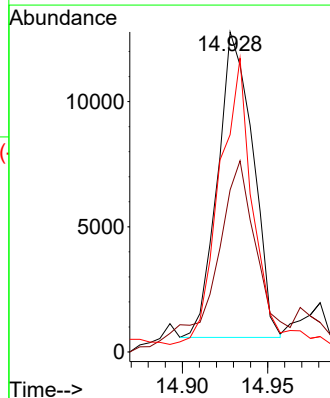
Tgt Ion:154 Resp: 23570
 Ion Ratio Lower Upper
 154 100
 153 37.1 29.2 43.8
 76 17.7 10.1 15.1#

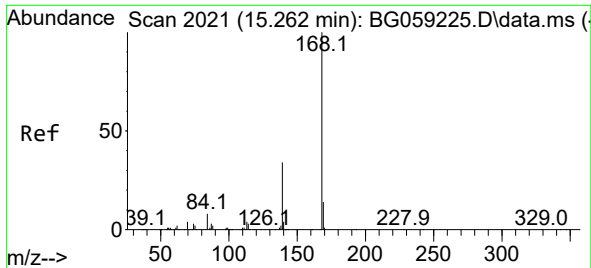


#52
 Acenaphthene
 Concen: 2.109 ng/u1
 RT: 14.928 min Scan# 1964
 Delta R.T. -0.007 min
 Lab File: BG059246.D
 Acq: 28 Sep 2023 23:06



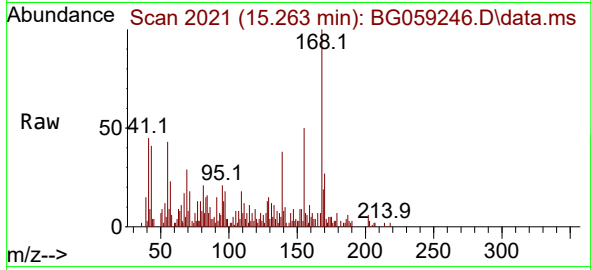
Tgt Ion:153 Resp: 17486
 Ion Ratio Lower Upper
 153 100
 152 50.6 38.5 57.7
 154 67.9 76.3 114.5#



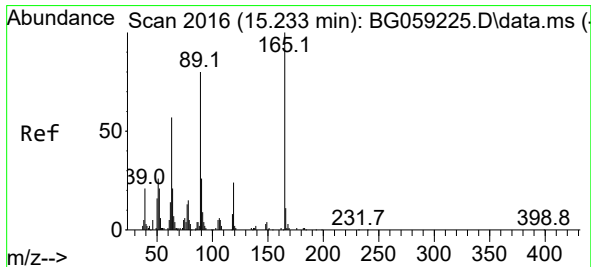
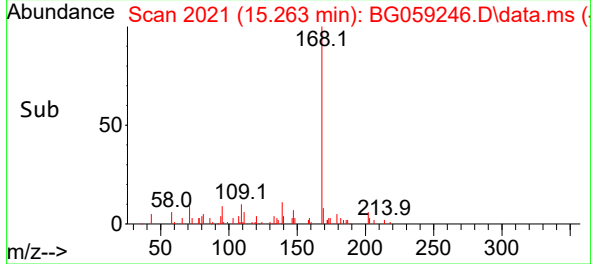
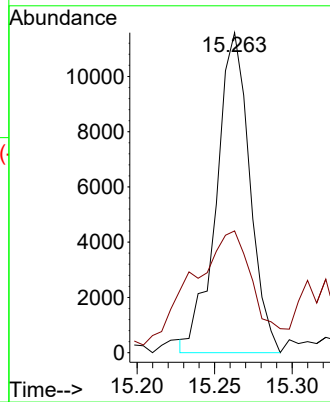


#56
 Dibenzofuran
 Concen: 1.572 ng/ul
 RT: 15.263 min Scan# 2021
 Delta R.T. -0.001 min
 Lab File: BG059246.D
 Acq: 28 Sep 2023 23:06

Instrument :
 BNA_G
 ClientSampleId :
 SSTD020579

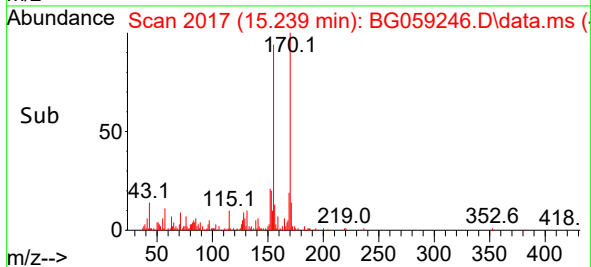
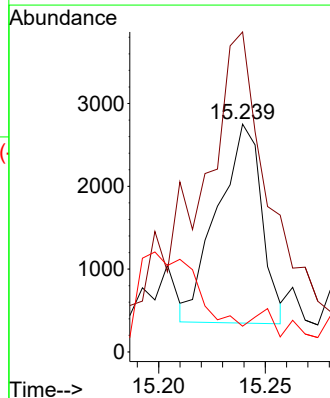
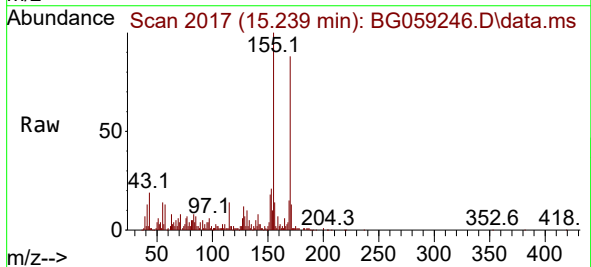


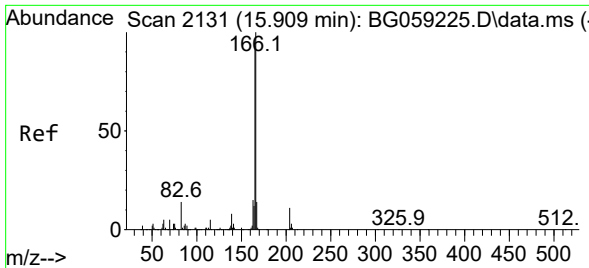
Tgt Ion:168 Resp: 17275
 Ion Ratio Lower Upper
 168 100
 139 38.0 26.6 39.8



#57
 2,4-Dinitrotoluene
 Concen: 1.488 ng/ul
 RT: 15.239 min Scan# 2017
 Delta R.T. 0.005 min
 Lab File: BG059246.D
 Acq: 28 Sep 2023 23:06

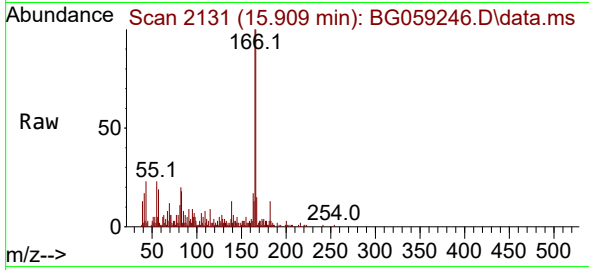
Tgt Ion:165 Resp: 3461
 Ion Ratio Lower Upper
 165 100
 63 140.4 43.5 65.3#
 182 11.3 1.8 2.6#



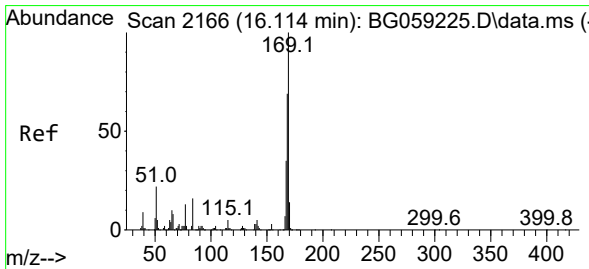
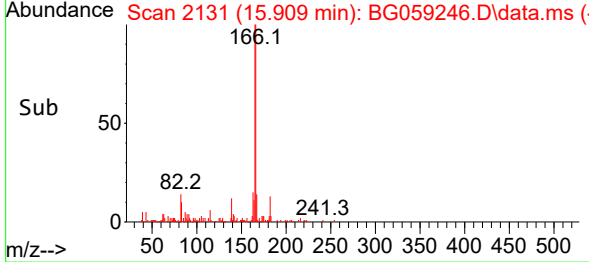
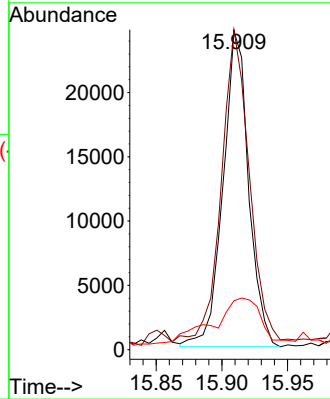


#61
 Fluorene
 Concen: 3.621 ng/uI
 RT: 15.909 min Scan# 2131
 Delta R.T. -0.001 min
 Lab File: BG059246.D
 Acq: 28 Sep 2023 23:06

Instrument :
 BNA_G
 ClientSampleId :
 SSTD020579

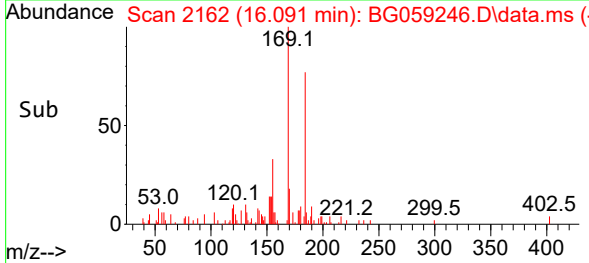
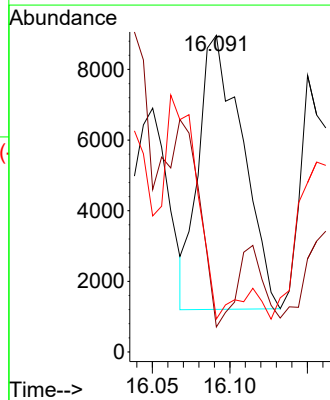
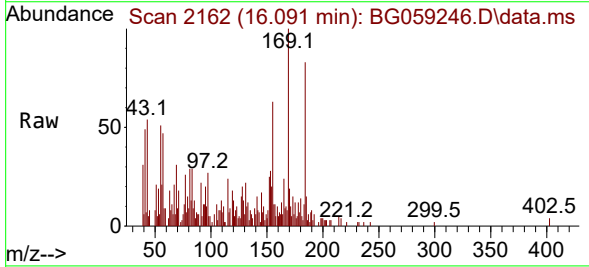


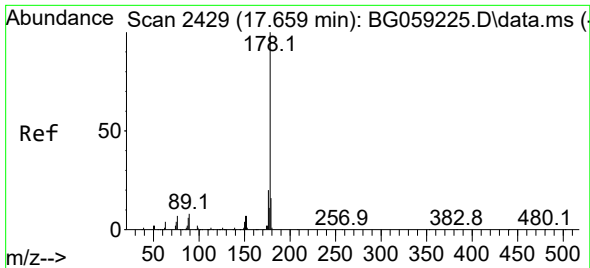
Tgt Ion:166 Resp: 33419
 Ion Ratio Lower Upper
 166 100
 165 100.4 78.6 118.0
 167 15.3 11.8 17.8



#67
 N-Nitrosodiphenylamine
 Concen: 2.028 ng/uI
 RT: 16.091 min Scan# 2162
 Delta R.T. -0.025 min
 Lab File: BG059246.D
 Acq: 28 Sep 2023 23:06

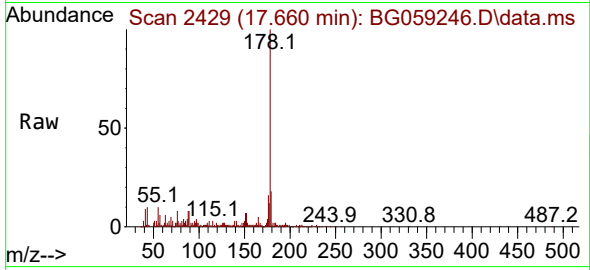
Tgt Ion:169 Resp: 15256
 Ion Ratio Lower Upper
 169 100
 168 7.9 57.0 85.6#
 167 10.4 29.8 44.6#



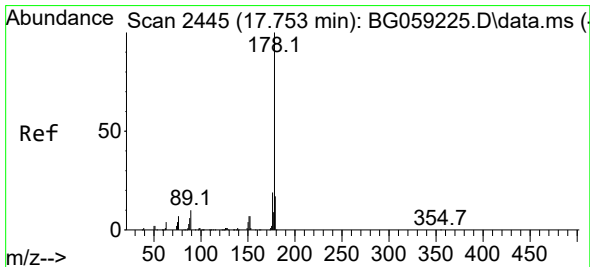
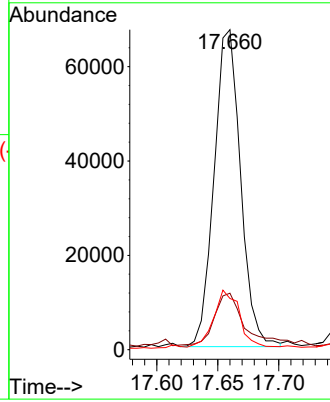
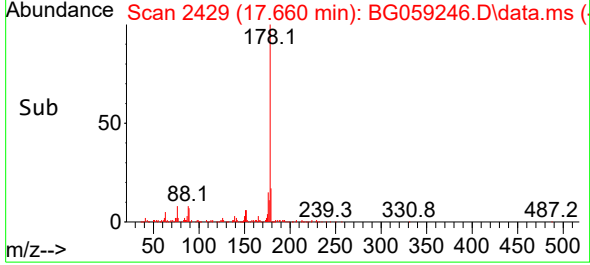


#72
 Phenanthrene
 Concen: 6.558 ng/u1
 RT: 17.660 min Scan# 2429
 Delta R.T. -0.001 min
 Lab File: BG059246.D
 Acq: 28 Sep 2023 23:06

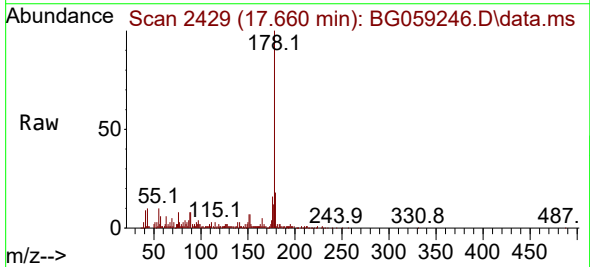
Instrument : BNA_G
 ClientSampleId : SSTD020579



Tgt Ion:178 Resp: 101584
 Ion Ratio Lower Upper
 178 100
 179 17.6 12.3 18.5
 176 16.0 14.6 21.8



#74
 Anthracene
 Concen: 6.361 ng/u1
 RT: 17.660 min Scan# 2429
 Delta R.T. -0.095 min
 Lab File: BG059246.D
 Acq: 28 Sep 2023 23:06



Tgt Ion:178 Resp: 101742
 Ion Ratio Lower Upper
 178 100
 179 17.6 12.0 18.0
 176 16.0 14.5 21.7

