

Data Path : Z:\svoasrv\HPCHEM1\BNA_G\Data\BG100621\
 Data File : BG050471.D
 Acq On : 6 Oct 2021 17:05
 Operator : CG/JU
 Sample : PB139656BL
 Misc :
 ALS Vial : 11 Sample Multiplier: 1

Instrument :
 BNA_G
 ClientSampleId :
 PB139656BL

Integration Parameters: rteint.p
 Integrator: RTE
 Smoothing : ON Filtering: 5
 Sampling : 1 Min Area: 3 % of largest Peak
 Start Thrs: 0.2 Max Peaks: 100
 Stop Thrs : 0 Peak Location: TOP

If leading or trailing edge < 100 prefer < Baseline drop else tangent >
 Peak separation: 5

Method : Z:\svoasrv\HPCHEM1\BNA_G\Methods\8270-BG100621.M
 Title : ASP BNA STANDARDS FOR 5 POINT CALIBRATION

Signal : TIC: BG050471.D\data.ms

peak #	R.T. min	first scan	max scan	last scan	PK TY	peak height	corr. area	corr. % max.	% of total
1	5.791	385	392	401	rBV	983676	1628141	44.07%	10.495%
2	7.395	656	665	674	rBV	970160	1715283	46.43%	11.057%
3	8.259	805	812	819	rVB	165657	287303	7.78%	1.852%
4	9.428	999	1011	1023	rBV	591017	1079393	29.22%	6.958%
5	11.085	1282	1293	1300	rBV	216608	399396	10.81%	2.575%
6	13.500	1697	1704	1712	rBV	1436037	2235244	60.50%	14.409%
7	14.875	1931	1938	1946	rVB	334405	538666	14.58%	3.472%
8	16.355	2183	2190	2202	rBV	1098121	1661919	44.98%	10.713%
9	17.619	2398	2405	2412	rVB	447831	688239	18.63%	4.436%
10	20.210	2839	2846	2851	rBV	2675443	3694437	100.00%	23.815%
11	21.614	3080	3085	3091	rBV	34128	51447	1.39%	0.332%
12	21.914	3129	3136	3145	rBV	446199	774411	20.96%	4.992%
13	25.327	3705	3717	3728	rBV2	250112	759455	20.56%	4.895%

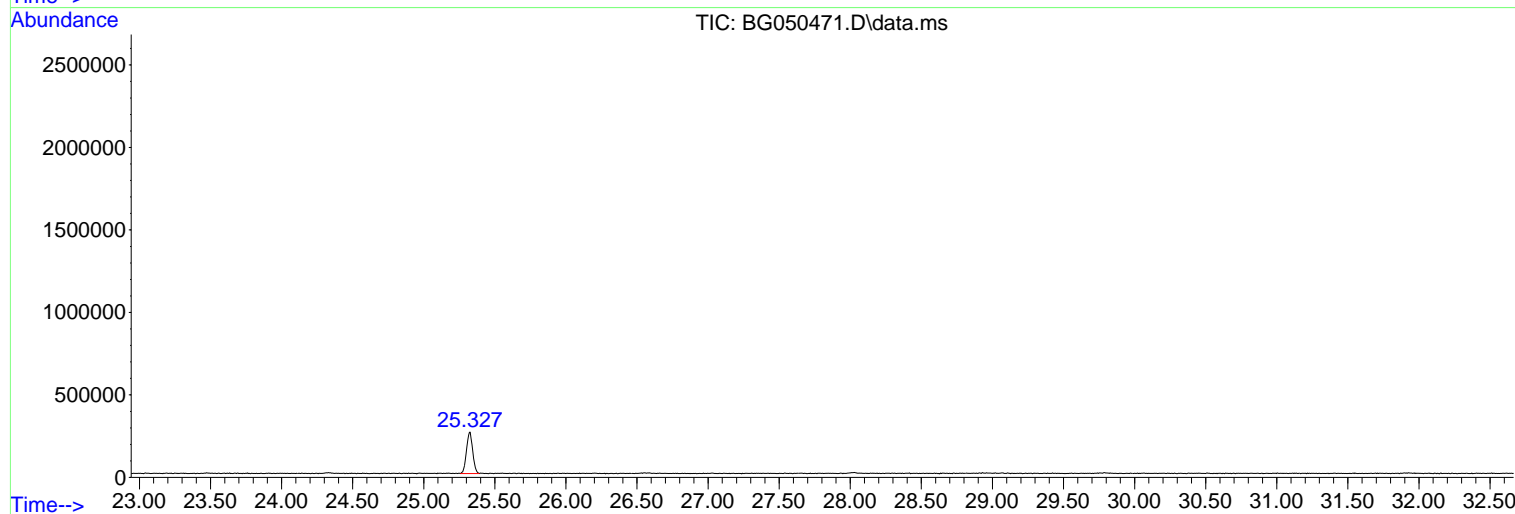
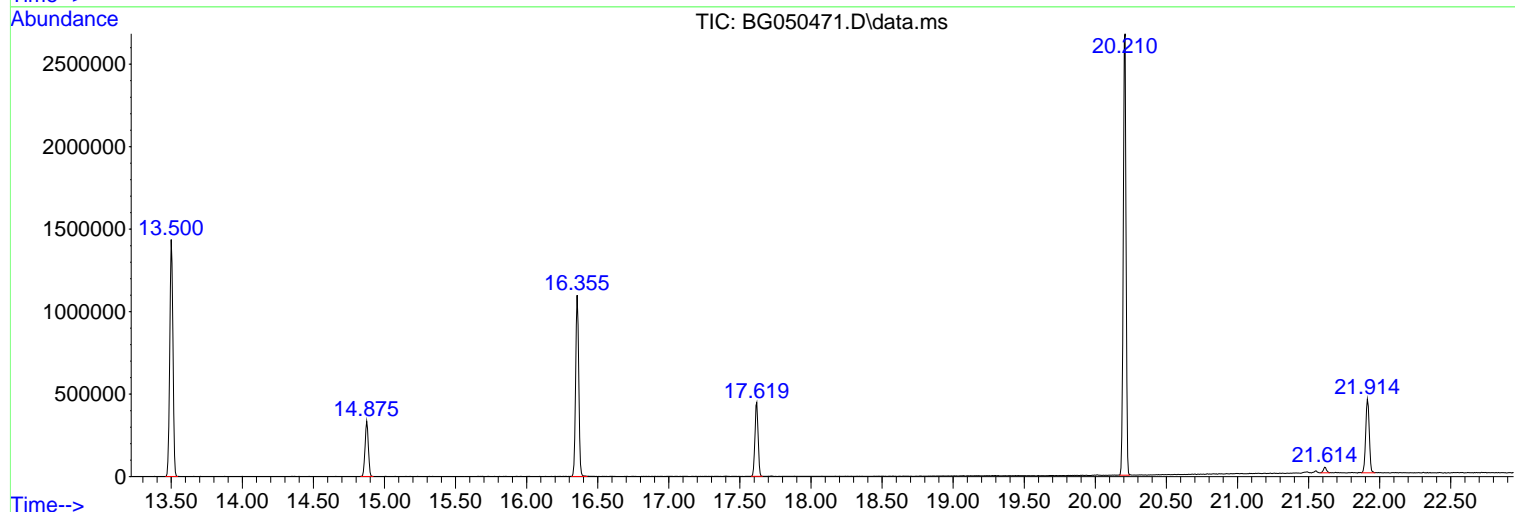
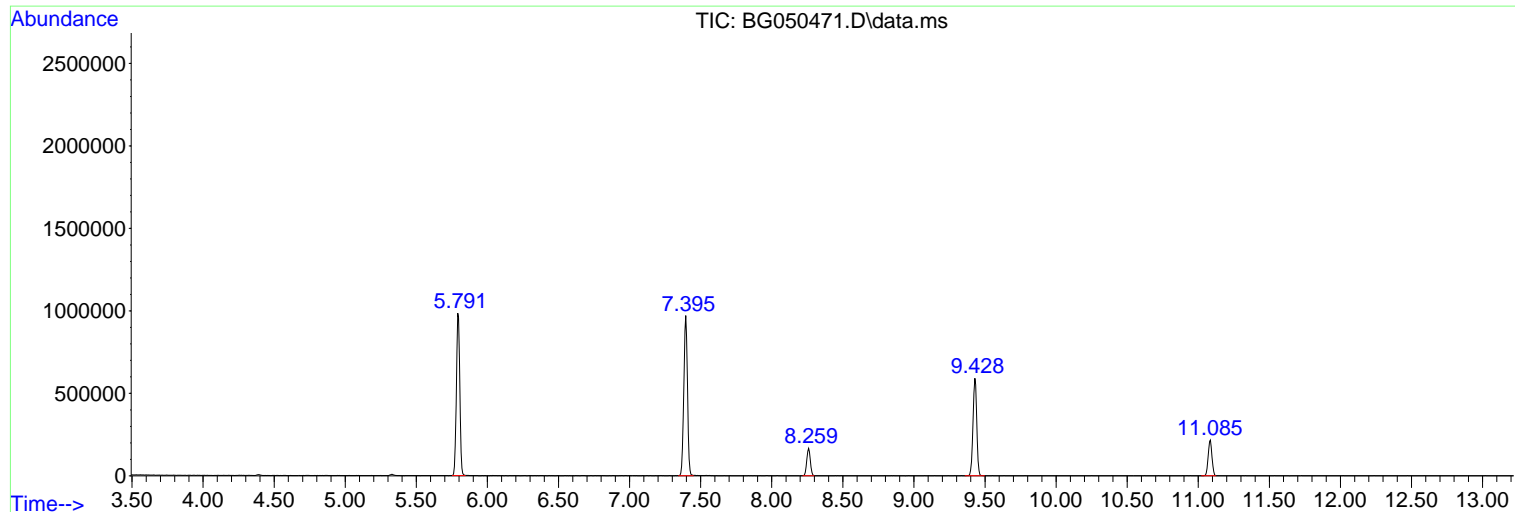
Sum of corrected areas: 15513334

Data Path : Z:\svoasrv\HPCHEM1\BNA_G\Data\BG100621\
Data File : BG050471.D
Acq On : 6 Oct 2021 17:05
Operator : CG/JU
Sample : PB139656BL
Misc :
ALS Vial : 11 Sample Multiplier: 1

Instrument :
BNA_G
ClientSampleId :
PB139656BL

Quant Method : Z:\svoasrv\HPCHEM1\BNA_G\Methods\8270-BG100621.M
Quant Title : ASP BNA STANDARDS FOR 5 POINT CALIBRATION

TIC Library : C:\Database\NIST20.L
TIC Integration Parameters: LSCINT.P



Library Search Compound Report

Data Path : Z:\svoasrv\HPCHEM1\BNA_G\Data\BG100621\
Data File : BG050471.D
Acq On : 6 Oct 2021 17:05
Operator : CG/JU
Sample : PB139656BL
Misc :
ALS Vial : 11 Sample Multiplier: 1

Instrument :
BNA_G
ClientSampleId :
PB139656BL

Quant Method : Z:\svoasrv\HPCHEM1\BNA_G\Methods\8270-BG100621.M
Quant Title : ASP BNA STANDARDS FOR 5 POINT CALIBRATION

TIC Library : C:\Database\NIST20.L
TIC Integration Parameters: LSCINT.P

No Library Search Compounds Detected

Data Path : Z:\svoasrv\HPCHEM1\BNA_G\Data\BG100621\
Data File : BG050471.D
Acq On : 6 Oct 2021 17:05
Operator : CG/JU
Sample : PB139656BL
Misc :
ALS Vial : 11 Sample Multiplier: 1

Instrument :
BNA_G
ClientSampleId :
PB139656BL

Quant Method : Z:\svoasrv\HPCHEM1\BNA_G\Methods\8270-BG100621.M
Quant Title : ASP BNA STANDARDS FOR 5 POINT CALIBRATION

TIC Library : C:\Database\NIST20.L
TIC Integration Parameters: LSCINT.P

TIC Top Hit name	RT	EstConc	Units	Response	#	RT	Resp	Conc
------------------	----	---------	-------	----------	---	----	------	------

|--Internal Standard--|