

Data Path : Z:\svoasrv\HPCHEM1\BNA\_G\Data\BG101221\  
 Data File : BG050560.D  
 Acq On : 12 Oct 2021 19:53  
 Operator : CG/JU  
 Sample : M4117-14  
 Misc :  
 ALS Vial : 16 Sample Multiplier: 1

Instrument :  
 BNA\_G  
 ClientSampleId :  
 SB-4(9.5-10.0)

Integration Parameters: rteint.p  
 Integrator: RTE  
 Smoothing : ON Filtering: 5  
 Sampling : 1 Min Area: 3 % of largest Peak  
 Start Thrs: 0.2 Max Peaks: 100  
 Stop Thrs : 0 Peak Location: TOP

If leading or trailing edge < 100 prefer < Baseline drop else tangent >  
 Peak separation: 5

Method : Z:\svoasrv\HPCHEM1\BNA\_G\Methods\8270-BG100621.M  
 Title : ASP BNA STANDARDS FOR 5 POINT CALIBRATION

Signal : TIC: BG050560.D\data.ms

| peak # | R.T. min | first scan | max scan | last scan | PK TY | peak height | corr. area | corr. % max. | % of total |
|--------|----------|------------|----------|-----------|-------|-------------|------------|--------------|------------|
| 1      | 5.800    | 385        | 393      | 402       | rBV   | 817106      | 1373115    | 58.80%       | 9.715%     |
| 2      | 7.404    | 654        | 666      | 681       | rBV   | 868311      | 1563789    | 66.96%       | 11.064%    |
| 3      | 8.256    | 804        | 811      | 824       | rVB   | 190519      | 337208     | 14.44%       | 2.386%     |
| 4      | 9.431    | 1002       | 1011     | 1023      | rBV   | 521055      | 964707     | 41.31%       | 6.825%     |
| 5      | 10.824   | 1240       | 1248     | 1260      | rBV   | 213969      | 370886     | 15.88%       | 2.624%     |
| 6      | 11.082   | 1284       | 1292     | 1300      | rBV   | 277452      | 520440     | 22.29%       | 3.682%     |
| 7      | 13.497   | 1696       | 1703     | 1712      | rBV   | 1147935     | 1859332    | 79.62%       | 13.155%    |
| 8      | 14.872   | 1929       | 1937     | 1947      | rBV   | 445602      | 731437     | 31.32%       | 5.175%     |
| 9      | 16.358   | 2183       | 2190     | 2206      | rVB   | 869631      | 1369815    | 58.66%       | 9.691%     |
| 10     | 17.616   | 2398       | 2404     | 2411      | rBV   | 513211      | 819834     | 35.11%       | 5.800%     |
| 11     | 18.256   | 2507       | 2513     | 2518      | rBV   | 22964       | 29256      | 1.25%        | 0.207%     |
| 12     | 18.479   | 2546       | 2551     | 2559      | rBV   | 57100       | 83678      | 3.58%        | 0.592%     |
| 13     | 20.207   | 2839       | 2845     | 2851      | rVB   | 1780813     | 2335337    | 100.00%      | 16.522%    |
| 14     | 21.511   | 3063       | 3067     | 3076      | rBV2  | 104331      | 170468     | 7.30%        | 1.206%     |
| 15     | 21.916   | 3129       | 3136     | 3143      | rBV   | 466074      | 808282     | 34.61%       | 5.719%     |
| 16     | 25.330   | 3708       | 3717     | 3735      | rVB2  | 251116      | 796863     | 34.12%       | 5.638%     |

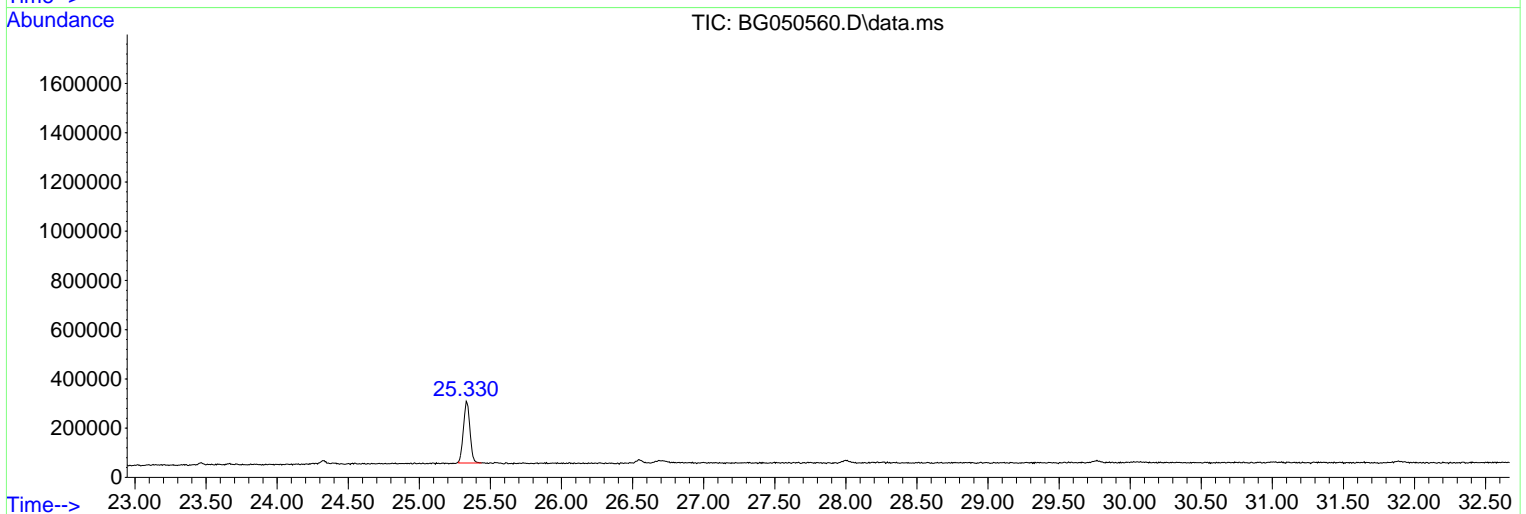
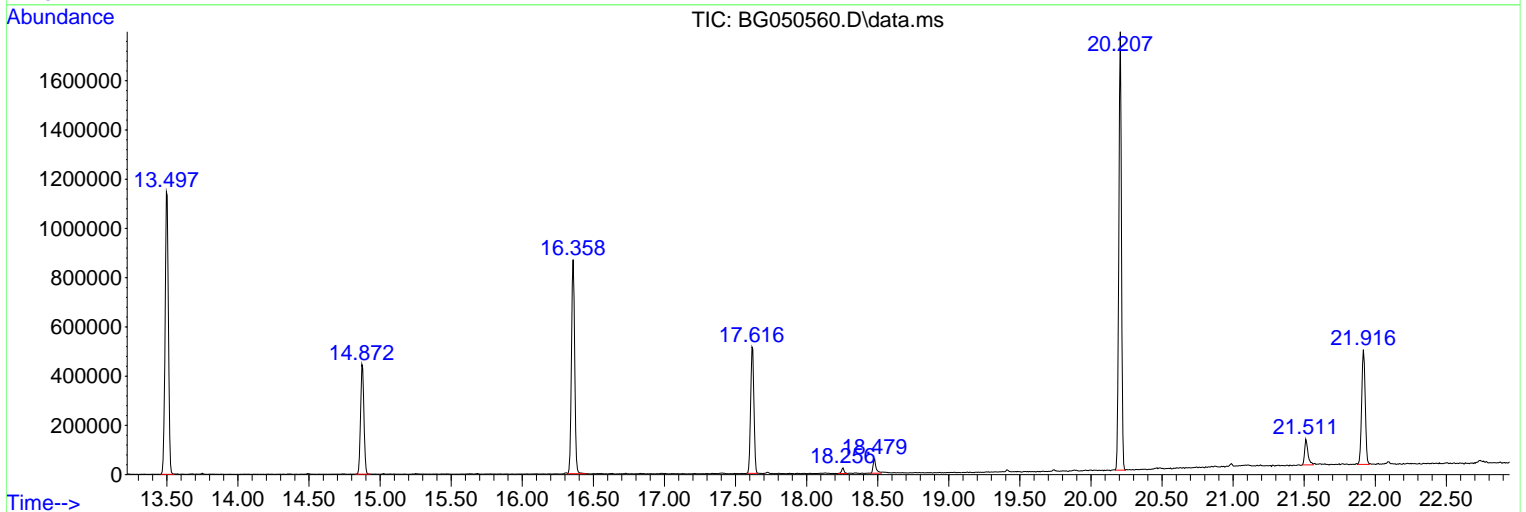
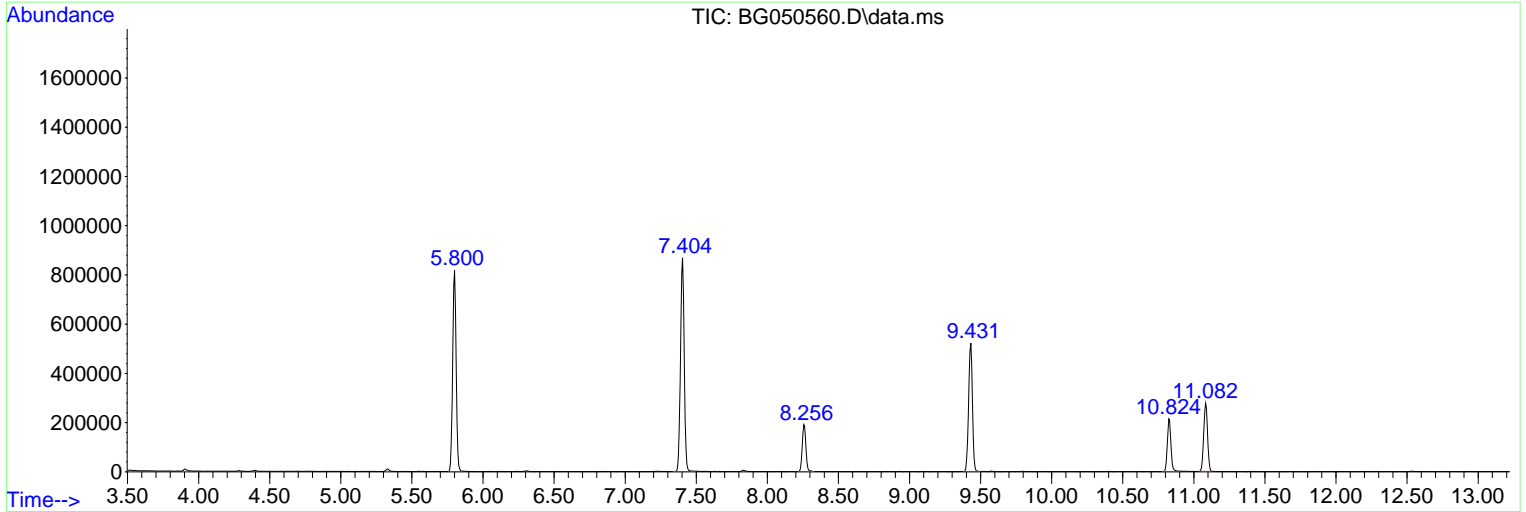
Sum of corrected areas: 14134447

Data Path : Z:\svoasrv\HPCHEM1\BNA\_G\Data\BG101221\  
 Data File : BG050560.D  
 Acq On : 12 Oct 2021 19:53  
 Operator : CG/JU  
 Sample : M4117-14  
 Misc :  
 ALS Vial : 16 Sample Multiplier: 1

**Instrument :**  
 BNA\_G  
**ClientSampleId :**  
 SB-4(9.5-10.0)

Quant Method : Z:\svoasrv\HPCHEM1\BNA\_G\Methods\8270-BG100621.M  
 Quant Title : ASP BNA STANDARDS FOR 5 POINT CALIBRATION

TIC Library : C:\Database\NIST20.L  
 TIC Integration Parameters: LSCINT.P



Data Path : Z:\svoasrv\HPCHEM1\BNA\_G\Data\BG101221\  
 Data File : BG050560.D  
 Acq On : 12 Oct 2021 19:53  
 Operator : CG/JU  
 Sample : M4117-14  
 Misc :  
 ALS Vial : 16 Sample Multiplier: 1

Instrument :  
 BNA\_G  
 ClientSampleId :  
 SB-4(9.5-10.0)

Quant Method : Z:\svoasrv\HPCHEM1\BNA\_G\Methods\8270-BG100621.M  
 Quant Title : ASP BNA STANDARDS FOR 5 POINT CALIBRATION

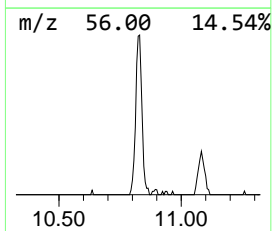
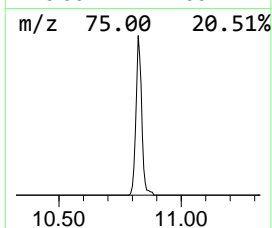
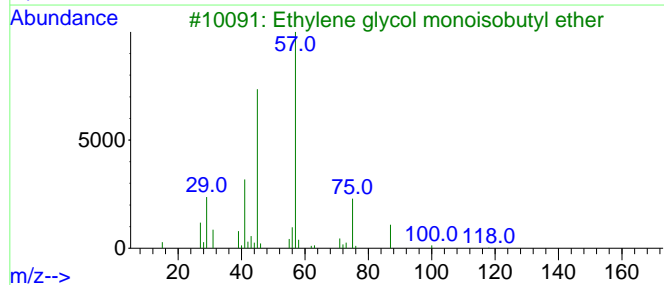
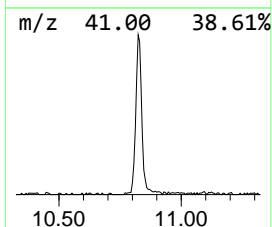
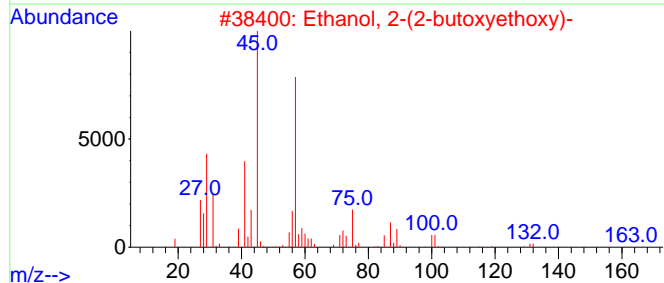
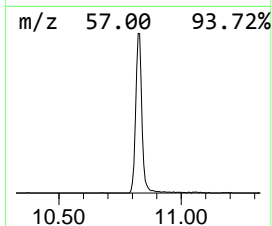
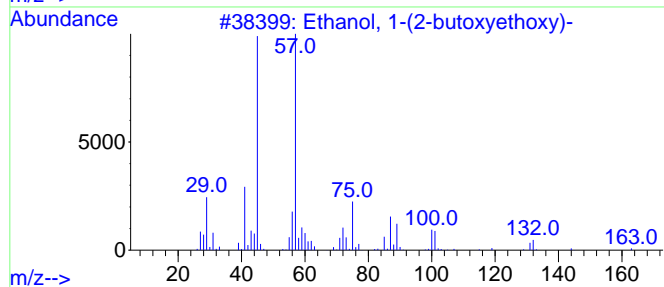
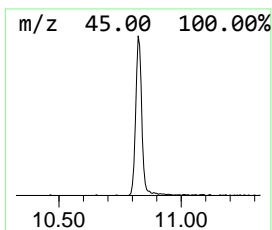
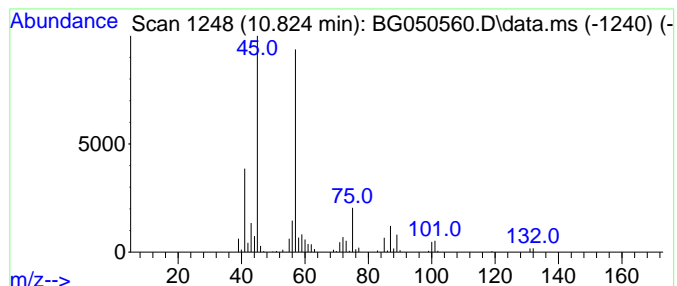
TIC Library : C:\Database\NIST20.L  
 TIC Integration Parameters: LSCINT.P

\*\*\*\*\*  
 Peak Number 1 Ethanol, 1-(2-butoxyethoxy)- Concentration Rank 1

| R.T.   | EstConc  | Area   | Relative to ISTD | R.T.   |
|--------|----------|--------|------------------|--------|
| 10.824 | 14.25 ng | 370886 | Naphthalene-d8   | 11.082 |

| Hit# | of | 5 | Tentative ID                        | MW  | MolForm | CAS#        | Qual |
|------|----|---|-------------------------------------|-----|---------|-------------|------|
| 1    |    |   | Ethanol, 1-(2-butoxyethoxy)-        | 162 | C8H18O3 | 054446-78-5 | 90   |
| 2    |    |   | Ethanol, 2-(2-butoxyethoxy)-        | 162 | C8H18O3 | 000112-34-5 | 90   |
| 3    |    |   | Ethylene glycol monoisobutyl ether  | 118 | C6H14O2 | 004439-24-1 | 72   |
| 4    |    |   | Ethanol, 2-[2-(2-methylpropoxy)e... | 162 | C8H18O3 | 018912-80-6 | 59   |
| 5    |    |   | Di-sec-Butyl ether                  | 130 | C8H18O  | 006863-58-7 | 53   |



Data Path : Z:\svoasrv\HPCHEM1\BNA\_G\Data\BG101221\  
 Data File : BG050560.D  
 Acq On : 12 Oct 2021 19:53  
 Operator : CG/JU  
 Sample : M4117-14  
 Misc :  
 ALS Vial : 16 Sample Multiplier: 1

Instrument :  
 BNA\_G  
 ClientSampleID :  
 SB-4(9.5-10.0)

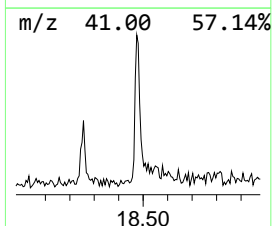
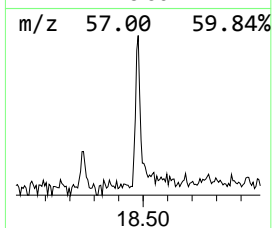
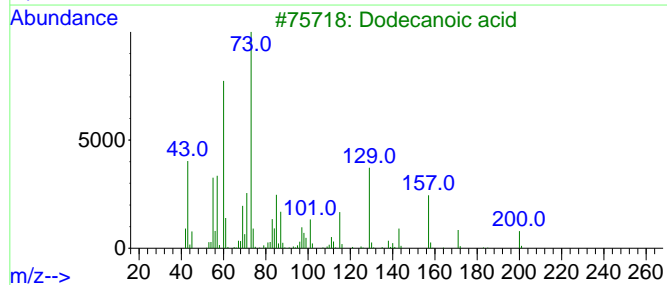
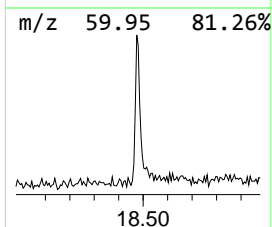
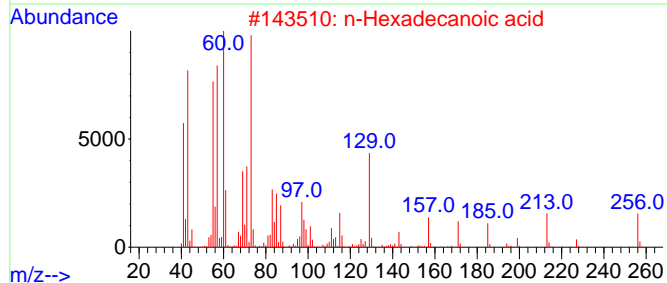
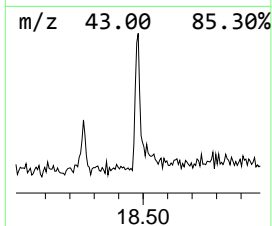
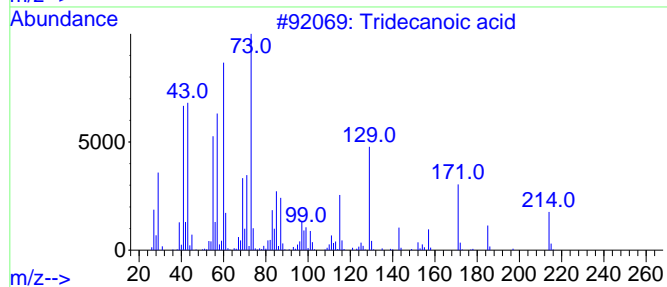
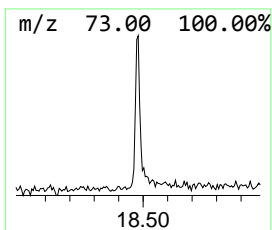
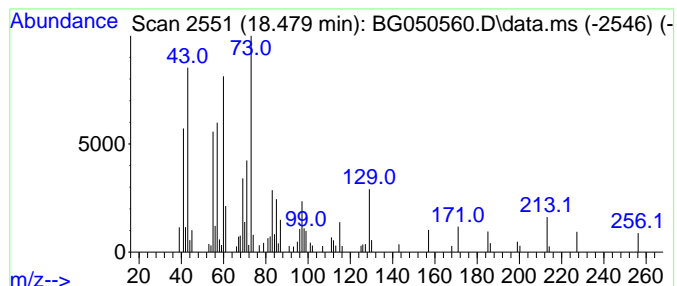
Quant Method : Z:\svoasrv\HPCHEM1\BNA\_G\Methods\8270-BG100621.M  
 Quant Title : ASP BNA STANDARDS FOR 5 POINT CALIBRATION

TIC Library : C:\Database\NIST20.L  
 TIC Integration Parameters: LSCINT.P

\*\*\*\*\*  
 Peak Number 2 Tridecanoic acid Concentration Rank 3

| R.T.   | EstConc | Area  | Relative to ISTD | R.T.   |
|--------|---------|-------|------------------|--------|
| 18.479 | 2.04 ng | 83678 | Phenanthrene-d10 | 17.616 |

| Hit# | of 5 | Tentative ID             | MW  | MolForm  | CAS#        | Qual |
|------|------|--------------------------|-----|----------|-------------|------|
| 1    |      | Tridecanoic acid         | 214 | C13H26O2 | 000638-53-9 | 87   |
| 2    |      | n-Hexadecanoic acid      | 256 | C16H32O2 | 000057-10-3 | 86   |
| 3    |      | Dodecanoic acid          | 200 | C12H24O2 | 000143-07-7 | 62   |
| 4    |      | Undecanoic acid          | 186 | C11H22O2 | 000112-37-8 | 58   |
| 5    |      | Ether, dodecyl isopropyl | 228 | C15H32O  | 029379-42-8 | 25   |



Data Path : Z:\svoasrv\HPCHEM1\BNA\_G\Data\BG101221\  
 Data File : BG050560.D  
 Acq On : 12 Oct 2021 19:53  
 Operator : CG/JU  
 Sample : M4117-14  
 Misc :  
 ALS Vial : 16 Sample Multiplier: 1

Instrument :  
 BNA\_G  
 ClientSampleId :  
 SB-4(9.5-10.0)

Quant Method : Z:\svoasrv\HPCHEM1\BNA\_G\Methods\8270-BG100621.M  
 Quant Title : ASP BNA STANDARDS FOR 5 POINT CALIBRATION

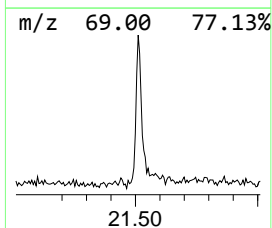
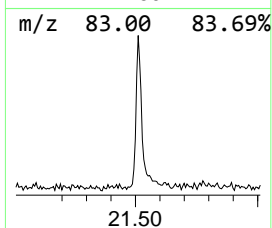
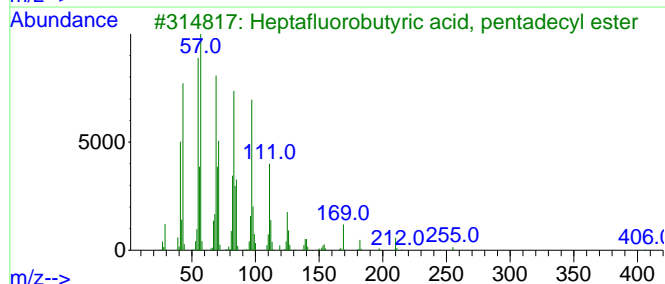
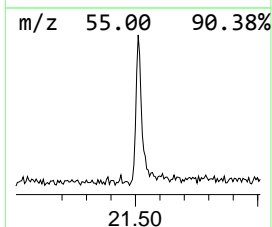
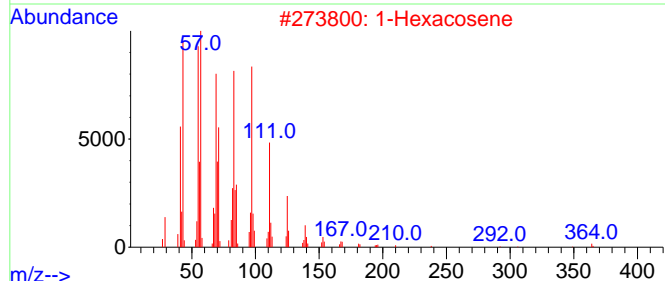
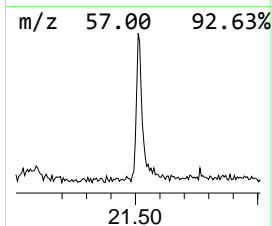
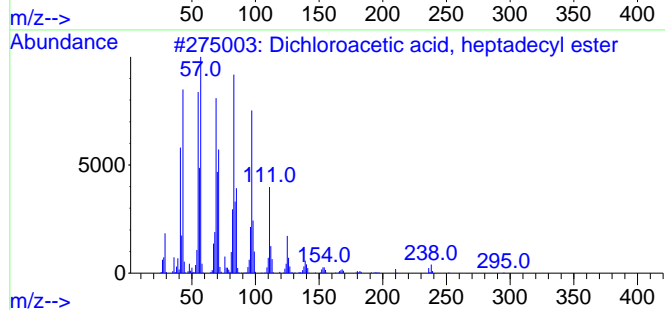
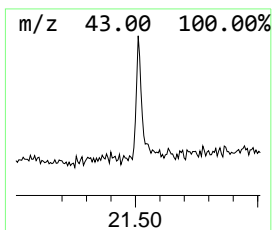
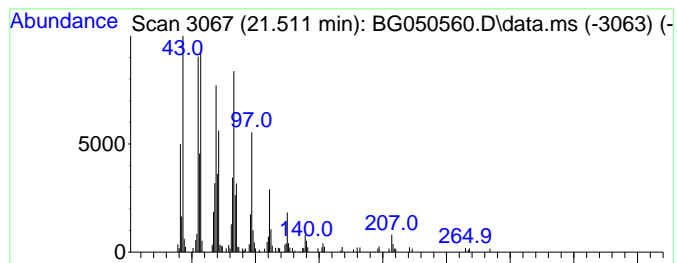
TIC Library : C:\Database\NIST20.L  
 TIC Integration Parameters: LSCINT.P

\*\*\*\*\*  
 Peak Number 3 Dichloroacetic acid, heptad... Concentration Rank 2

| R.T.   | EstConc | Area   | Relative to ISTD | R.T.   |
|--------|---------|--------|------------------|--------|
| 21.511 | 4.22 ng | 170468 | Chrysene-d12     | 21.916 |

| Hit# | of 5 | Tentative ID                        | MW  | MolForm     | CAS#         | Qual |
|------|------|-------------------------------------|-----|-------------|--------------|------|
| 1    |      | Dichloroacetic acid, heptadecyl ... | 366 | C19H36Cl2O2 | 1000282-98-2 | 94   |
| 2    |      | 1-Hexacosene                        | 364 | C26H52      | 018835-33-1  | 91   |
| 3    |      | Heptafluorobutyric acid, pentade... | 424 | C19H31F7O2  | 959261-23-5  | 91   |
| 4    |      | Bromoacetic acid, hexadecyl ester   | 362 | C18H35BrO2  | 005454-48-8  | 90   |
| 5    |      | Cyclopentadecane                    | 210 | C15H30      | 000295-48-7  | 90   |



Data Path : Z:\svoasrv\HPCHEM1\BNA\_G\Data\BG101221\  
Data File : BG050560.D  
Acq On : 12 Oct 2021 19:53  
Operator : CG/JU  
Sample : M4117-14  
Misc :  
ALS Vial : 16 Sample Multiplier: 1

Instrument :  
BNA\_G  
ClientSampleId :  
SB-4(9.5-10.0)

Quant Method : Z:\svoasrv\HPCHEM1\BNA\_G\Methods\8270-BG100621.M  
Quant Title : ASP BNA STANDARDS FOR 5 POINT CALIBRATION

TIC Library : C:\Database\NIST0.L  
TIC Integration Parameters: LSCINT.P

| TIC Top Hit name   | RT     | EstConc | Units | Response | --Internal Standard-- |        |        |      |
|--------------------|--------|---------|-------|----------|-----------------------|--------|--------|------|
|                    |        |         |       |          | #                     | RT     | Resp   | Conc |
| Ethanol, 1-(2-b... | 10.824 | 14.3    | ng    | 370886   | 2                     | 11.082 | 520440 | 20.0 |
| Tridecanoic acid   | 18.479 | 2.0     | ng    | 83678    | 4                     | 17.616 | 819834 | 20.0 |
| Dichloroacetic ... | 21.511 | 4.2     | ng    | 170468   | 5                     | 21.916 | 808282 | 20.0 |