

Data Path : Z:\svoasrv\HPCHEM1\BNA\_G\Data\BG101723\  
 Data File : BG059467.D  
 Acq On : 17 Oct 2023 21:02  
 Operator : MA/JU  
 Sample : SSTD04052  
 Misc :  
 ALS Vial : 6 Sample Multiplier: 1

Instrument :  
 BNA\_G  
 ClientSampleId :  
 SSTD040416

Quant Time: Oct 18 03:57:10 2023  
 Quant Method : Z:\svoasrv\HPCHEM1\BNA\_G\Methods\SFAM-EPA-BG101723.MA.M  
 Quant Title : SVOA CALIBRATION  
 QLast Update : Wed Oct 18 03:51:17 2023  
 Response via : Initial Calibration

Compound	R.T.	QIon	Response	Conc	Units	Dev(Min)
Internal Standards						
1) 1,4-Dichlorobenzene-d4	8.193	152	27812	20.000	ng/ul	0.00
20) Naphthalene-d8	11.031	136	181621	20.000	ng/ul	# 0.00
38) Acenaphthene-d10	14.827	164	78187	20.000	ng/ul	0.00
64) Phenanthrene-d10	17.577	188	166653	20.000	ng/ul	0.00
79) Chrysene-d12	21.871	240	153236	20.000	ng/ul	0.00
88) Perylene-d12	25.320	264	183602	20.000	ng/ul	0.00
System Monitoring Compounds						
3) 1,4-Dioxane-d8	3.481	96	13341	15.663	ng/uL	0.00
4) Pyridine-d5	3.916	84	135531	52.622	ng/ul	0.00
7) Phenol-d5	7.318	99	126421	41.804	ng/ul	0.00
9) Bis-(2-Chloroethyl)eth...	7.512	67	71012	41.545	ng/ul	0.00
11) 2-Chlorophenol-d4	7.712	132	95849	44.305	ng/ul	0.00
15) 4-Methylphenol-d8	8.887	113	95978	42.059	ng/ul	0.00
21) Nitrobenzene-d5	9.392	128	44944	30.078	ng/ul	0.00
24) 2-Nitrophenol-d4	10.109	143	65663	44.874	ng/ul	0.00
28) 2,4-Dichlorophenol-d3	10.638	165	130025	42.355	ng/ul	0.00
31) 4-Chloroaniline-d4	11.178	131	173586	36.179	ng/ul	0.00
46) Dimethylphthalate-d6	14.227	166	269656	40.759	ng/ul	0.00
49) Acenaphthylene-d8	14.533	160	335802	41.741	ng/ul	0.00
54) 4-Nitrophenol-d4	15.027	143	48481	41.883	ng/ul	0.00
60) Fluorene-d10	15.820	176	250263	39.778	ng/ul	0.00
65) 4,6-Dinitro-2-methylph...	15.937	200	42378	41.876	ng/ul	0.00
73) Anthracene-d10	17.676	188	378445	44.025	ng/ul	0.00
81) Pyrene-d10	19.956	212	420850	44.577	ng/ul	0.00
92) Benzo(a)pyrene-d12	25.079	264	432967	42.502	ng/ul	0.00
Target Compounds						
2) 1,4-Dioxane	3.517	88	14630	13.659	ng/uL	98
5) Pyridine	3.940	79	141673	56.338	ng/ul	89
6) Benzaldehyde	7.336	77	59718	45.132	ng/ul	91
8) Phenol	7.347	94	123086	41.138	ng/ul	93
10) Bis(2-Chloroethyl)ether	7.612	93	96198	40.391	ng/ul	93
12) 2-Chlorophenol	7.741	128	97878	43.542	ng/ul	98
13) 2-Methylphenol	8.622	108	94926	43.208	ng/ul	93
14) 2,2'-oxybis(1-Chloropr...	8.699	45	203117	41.513	ng/ul	98
16) Acetophenone	9.034	105	143798	41.729	ng/ul	97
17) N-Nitroso-di-n-propyla...	8.998	70	65640	41.369	ng/ul	92
18) 4-Methylphenol	8.957	108	99322	41.587	ng/ul	89
19) Hexachloroethane	9.274	117	37440	43.825	ng/ul#	81
22) Nitrobenzene	9.433	77	100532	30.046	ng/ul	99
23) Isophorone	9.938	82	324833	46.226	ng/ul	99
25) 2-Nitrophenol	10.144	139	66357	41.149	ng/ul	92
26) 2,4-Dimethylphenol	10.168	107	126868	38.401	ng/ul	94
27) Bis(2-Chloroethoxy)met...	10.426	93	210004	46.466	ng/ul	95
29) 2,4-Dichlorophenol	10.667	162	127630	43.018	ng/ul#	83
30) Naphthalene	11.084	128	455803	41.347	ng/ul	97
32) 4-Chloroaniline	11.208	127	161382	35.336	ng/ul	92
33) Hexachlorobutadiene	11.313	225	59106	30.216	ng/ul	96
34) Caprolactam	12.012	113	1270	1.241	ng/ul	89
35) 4-Chloro-3-methylphenol	12.289	107	87065	29.332	ng/ul	97
36) 2-Methylnaphthalene	12.670	142	208509	29.637	ng/ul	94

Data Path : Z:\svoasrv\HPCHEM1\BNA\_G\Data\BG101723\  
 Data File : BG059467.D  
 Acq On : 17 Oct 2023 21:02  
 Operator : MA/JU  
 Sample : SSTD04052  
 Misc :  
 ALS Vial : 6 Sample Multiplier: 1

Instrument :  
 BNA\_G  
 ClientSampleId :  
 SSTD040416

Quant Time: Oct 18 03:57:10 2023  
 Quant Method : Z:\svoasrv\HPCHEM1\BNA\_G\Methods\SFAM-EPA-BG101723.MA.M  
 Quant Title : SVOA CALIBRATION  
 QLast Update : Wed Oct 18 03:51:17 2023  
 Response via : Initial Calibration

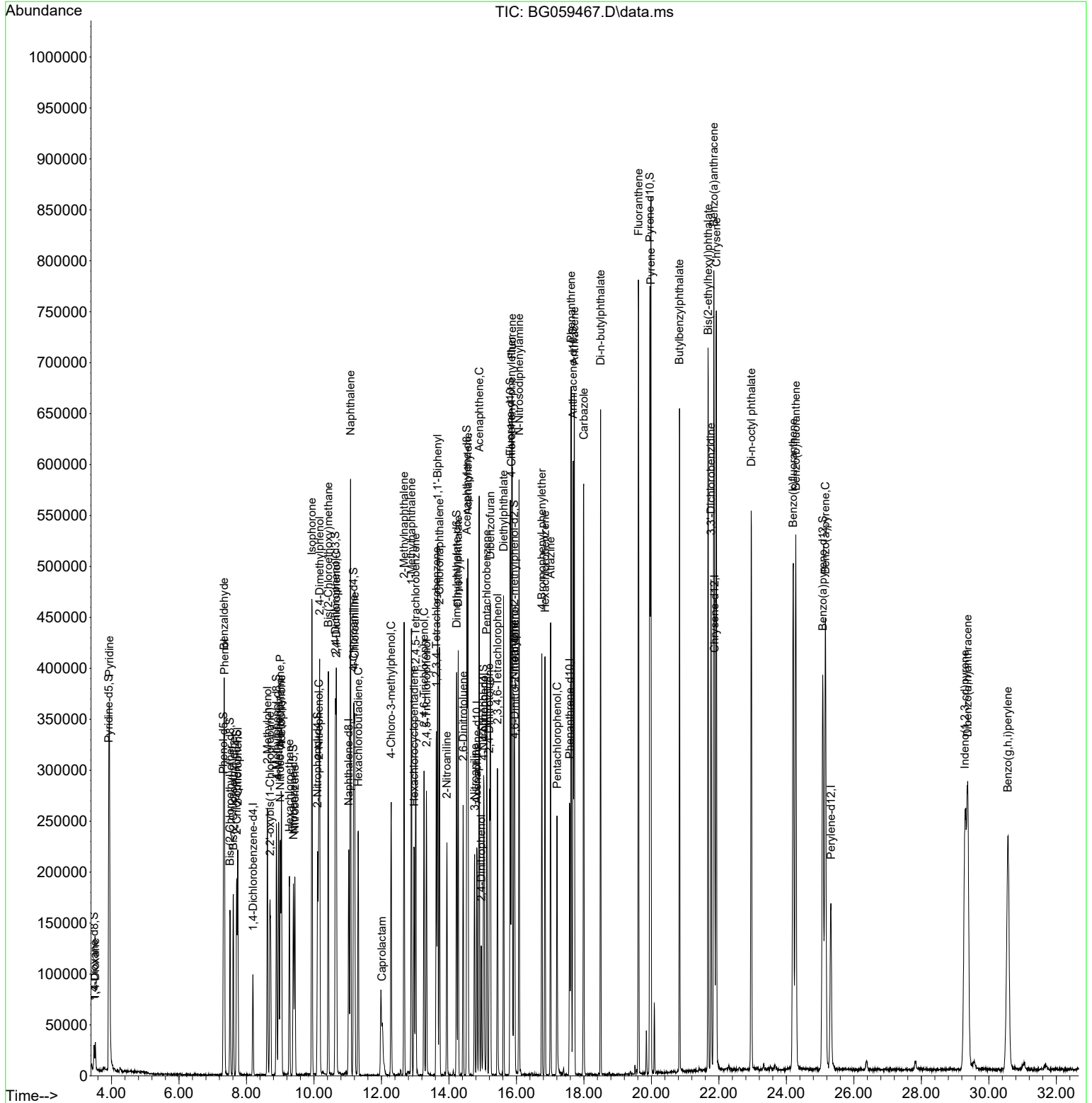
Compound	R.T.	QIon	Response	Conc	Units	Dev(Min)
37) 1-Methylnaphthalene	12.888	142	209927	29.031	ng/ul#	99
39) 1,2,4,5-Tetrachloroben...	13.017	216	110228	42.980	ng/ul	97
40) Hexachlorocyclopentadiene	12.970	237	65945	44.389	ng/ul	92
41) 2,4,6-Trichlorophenol	13.264	196	68706	43.924	ng/ul	93
42) 2,4,5-Trichlorophenol	13.334	196	71978	42.311	ng/ul	97
43) 1,1'-Biphenyl	13.663	154	292193	41.326	ng/ul	100
44) 2-Chloronaphthalene	13.722	162	223475	41.136	ng/ul	96
45) 2-Nitroaniline	13.940	65	58761	40.999	ng/ul	94
47) Dimethylphthalate	14.275	163	267040	40.351	ng/ul	97
48) 2,6-Dinitrotoluene	14.421	165	51940	42.847	ng/ul	97
50) Acenaphthylene	14.562	152	352559	41.634	ng/ul	98
51) 3-Nitroaniline	14.762	138	54809	41.749	ng/ul#	80
52) Acenaphthene	14.897	153	236267	40.520	ng/ul	96
53) 2,4-Dinitrophenol	14.956	184	27803	42.237	ng/ul	95
55) 4-Nitrophenol	15.038	109	34367	41.363	ng/ul	89
56) Dibenzofuran	15.226	168	318798	40.219	ng/ul	100
57) 2,4-Dinitrotoluene	15.197	165	75088	42.831	ng/ul#	96
58) 2,3,4,6-Tetrachlorophenol	15.438	232	66442	43.100	ng/ul#	92
59) Diethylphthalate	15.620	149	252538	39.348	ng/ul	98
61) Fluorene	15.873	166	262084	39.987	ng/ul	94
62) 4-Chlorophenyl-phenyle...	15.855	204	136025	40.756	ng/ul	91
63) 4-Nitroaniline	15.926	138	54339	42.117	ng/ul	92
66) 4,6-Dinitro-2-methylph...	15.949	198	45834	42.771	ng/ul#	80
67) N-Nitrosodiphenylamine	16.078	169	216711	43.961	ng/ul	97
68) 4-Bromophenyl-phenylether	16.754	248	80508	44.305	ng/ul	93
69) Hexachlorobenzene	16.848	284	88352	42.548	ng/ul	97
70) Atrazine	17.012	200	78875	41.098	ng/ul	98
71) Pentachlorophenol	17.206	266	51895	43.926	ng/ul	85
72) Phenanthrene	17.624	178	441876	42.533	ng/ul	98
74) Anthracene	17.718	178	454108	42.630	ng/ul	97
75) 1,2,3,4-Tetrachloroben...	13.628	216	111460	46.322	ng/ul	94
76) Pentachlorobenzene	15.121	250	106480	45.408	ng/ul	95
77) Carbazole	17.994	167	388383	42.162	ng/ul	98
78) Di-n-butylphthalate	18.493	149	446628	43.009	ng/ul	97
80) Fluoranthene	19.615	202	517863	46.024	ng/ul	98
82) Pyrene	19.985	202	537046	44.444	ng/ul	97
83) Butylbenzylphthalate	20.832	149	195146	47.931	ng/ul	95
84) 3,3'-Dichlorobenzidine	21.766	252	187627	46.783	ng/ul	99
85) Benzo(a)anthracene	21.848	228	529038	43.663	ng/ul	98
86) Bis(2-ethylhexyl)phtha...	21.683	149	286127	48.213	ng/ul	96
87) Chrysene	21.924	228	500326	43.772	ng/ul	99
89) Di-n-octyl phthalate	22.958	149	484517	45.050	ng/ul	100
90) Benzo(b)fluoranthene	24.280	252	544558	43.857	ng/ul	98
91) Benzo(k)fluoranthene	24.198	252	540325	42.802	ng/ul	99
93) Benzo(a)pyrene	25.156	252	510746	42.414	ng/ul	97
94) Indeno(1,2,3-cd)pyrene	29.292	276	520276	38.465	ng/ul	98
95) Dibenzo(a,h)anthracene	29.374	278	472706	42.004	ng/ul	99
96) Benzo(g,h,i)perylene	30.561	276	475933	43.056	ng/ul#	94

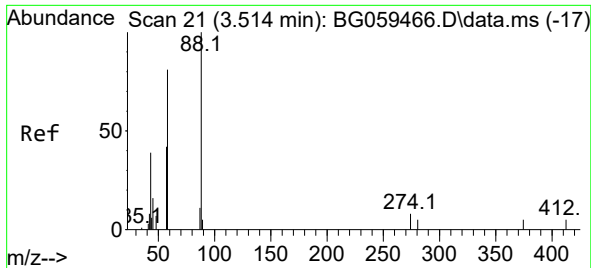
(#) = qualifier out of range (m) = manual integration (+) = signals summed

Data Path : Z:\svoasrv\HPCHEM1\BNA\_G\Data\BG101723\  
 Data File : BG059467.D  
 Acq On : 17 Oct 2023 21:02  
 Operator : MA/JU  
 Sample : SSTD04052  
 Misc :  
 ALS Vial : 6 Sample Multiplier: 1

Instrument :  
 BNA\_G  
 ClientSampleId :  
 SSTD040416

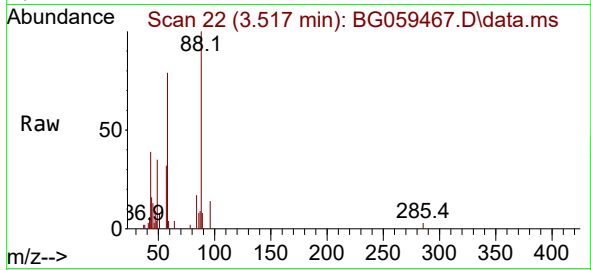
Quant Time: Oct 18 03:57:10 2023  
 Quant Method : Z:\svoasrv\HPCHEM1\BNA\_G\Methods\SFAM-EPA-BG101723.MA.M  
 Quant Title : SVOA CALIBRATION  
 QLast Update : Wed Oct 18 03:51:17 2023  
 Response via : Initial Calibration



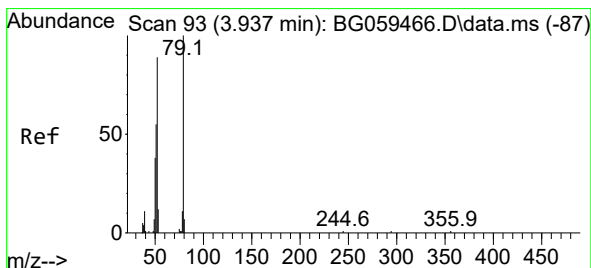
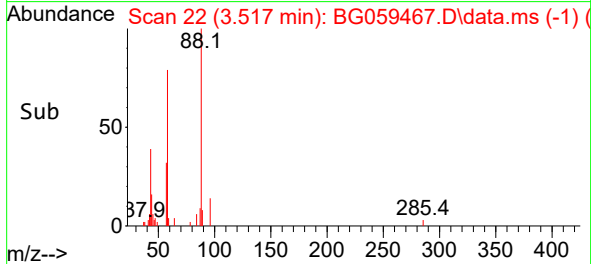
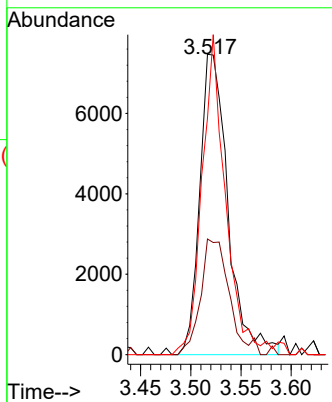


#2  
 1,4-Dioxane  
 Concen: 13.659 ng/uL  
 RT: 3.517 min Scan# 21  
 Delta R.T. 0.002 min  
 Lab File: BG059467.D  
 Acq: 17 Oct 2023 21:02

Instrument :  
 BNA\_G  
 ClientSampleId :  
 SSTD040416

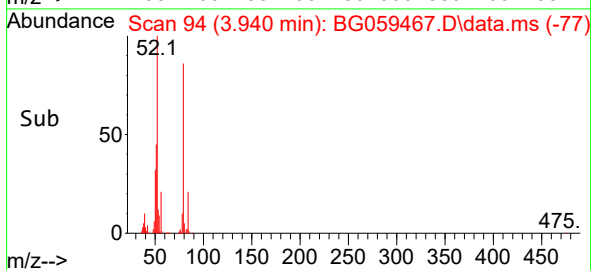
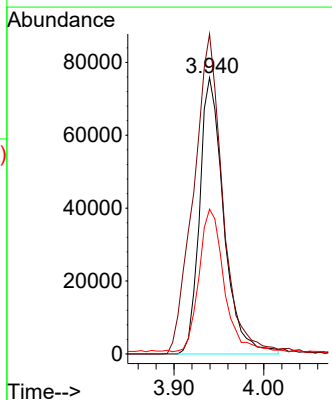
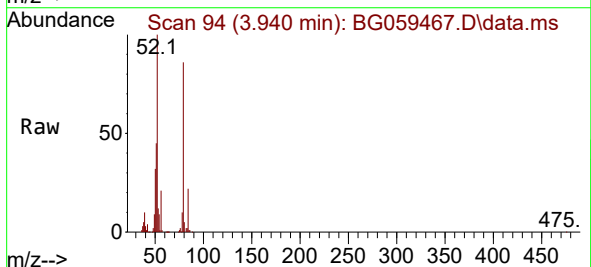


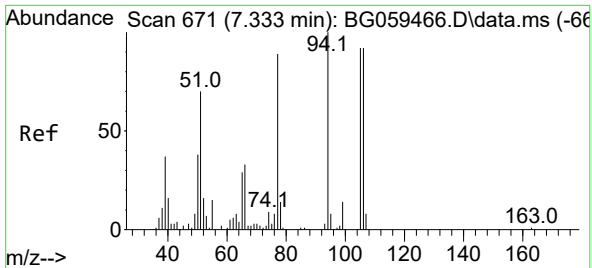
Tgt Ion: 88 Resp: 14630  
 Ion Ratio Lower Upper  
 88 100  
 43 38.5 30.8 46.2  
 58 78.8 65.0 97.4



#5  
 Pyridine  
 Concen: 56.338 ng/uL  
 RT: 3.940 min Scan# 94  
 Delta R.T. 0.002 min  
 Lab File: BG059467.D  
 Acq: 17 Oct 2023 21:02

Tgt Ion: 79 Resp: 141673  
 Ion Ratio Lower Upper  
 79 100  
 52 115.8 80.9 121.3  
 51 52.4 45.0 67.4

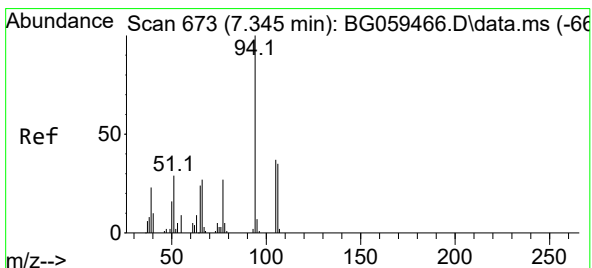
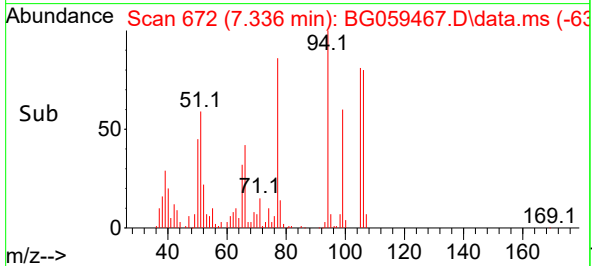
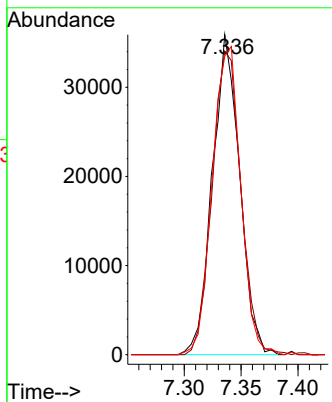
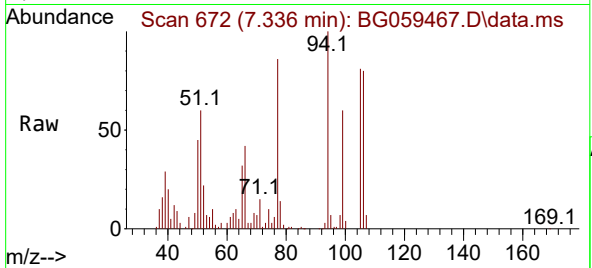




#6  
Benzaldehyde  
Concen: 45.132 ng/ul  
RT: 7.336 min Scan# 671  
Delta R.T. 0.002 min  
Lab File: BG059467.D  
Acq: 17 Oct 2023 21:02

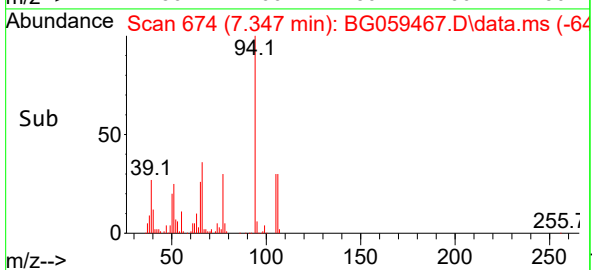
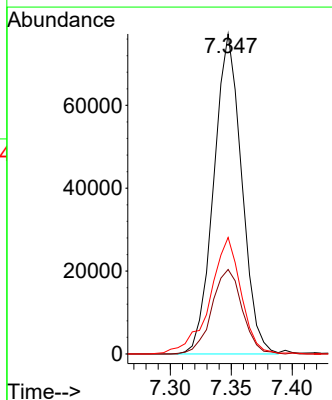
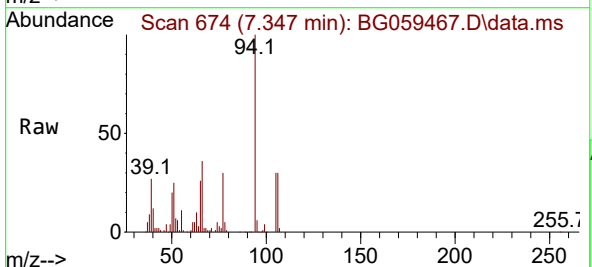
Instrument : BNA\_G  
ClientSampleId : SSTD040416

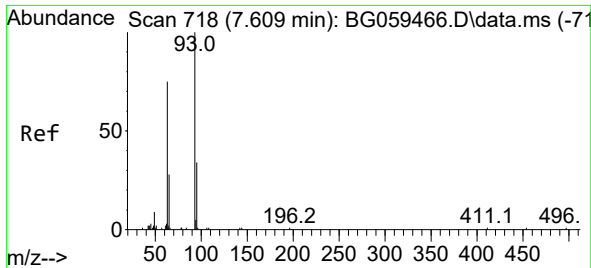
Tgt Ion: 77 Resp: 59718  
Ion Ratio Lower Upper  
77 100  
105 94.9 83.0 124.6  
106 93.3 82.8 124.2



#8  
Phenol  
Concen: 41.138 ng/ul  
RT: 7.347 min Scan# 674  
Delta R.T. 0.002 min  
Lab File: BG059467.D  
Acq: 17 Oct 2023 21:02

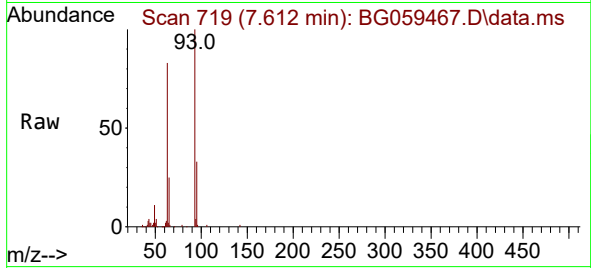
Tgt Ion: 94 Resp: 123086  
Ion Ratio Lower Upper  
94 100  
65 26.4 19.7 29.5  
66 36.4 24.5 36.7





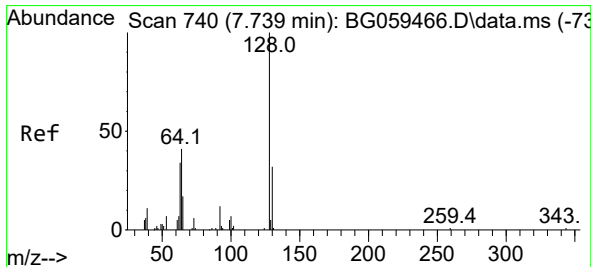
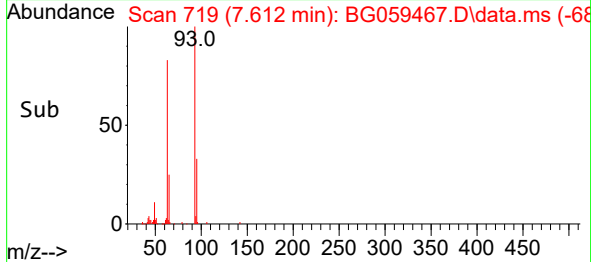
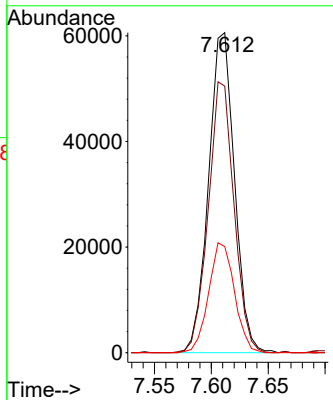
#10  
 Bis(2-Chloroethyl)ether  
 Concen: 40.391 ng/ul  
 RT: 7.612 min Scan# 719  
 Delta R.T. 0.002 min  
 Lab File: BG059467.D  
 Acq: 17 Oct 2023 21:02

Instrument :  
 BNA\_G  
 ClientSampleId :  
 SSTD040416



Tgt Ion: 93 Resp: 96198

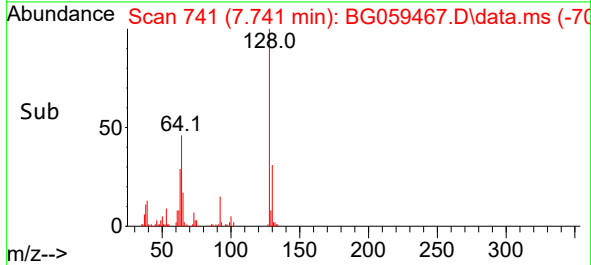
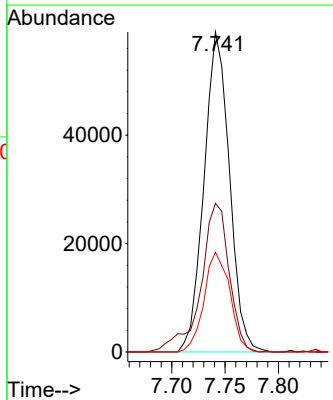
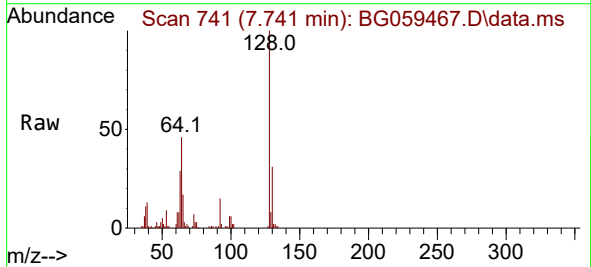
Ion	Ratio	Lower	Upper
93	100		
63	83.3	60.0	90.0
95	33.2	27.6	41.4

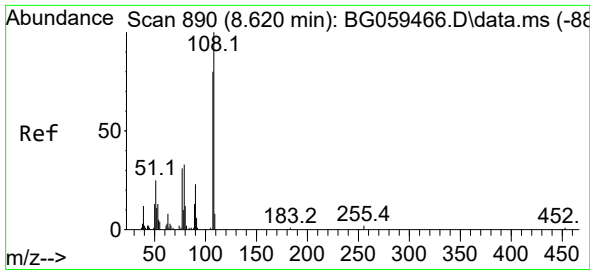


#12  
 2-Chlorophenol  
 Concen: 43.542 ng/ul  
 RT: 7.741 min Scan# 741  
 Delta R.T. 0.002 min  
 Lab File: BG059467.D  
 Acq: 17 Oct 2023 21:02

Tgt Ion: 128 Resp: 97878

Ion	Ratio	Lower	Upper
128	100		
64	46.5	36.8	55.2
130	31.2	26.6	40.0

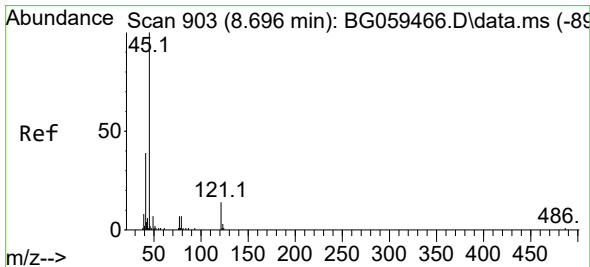
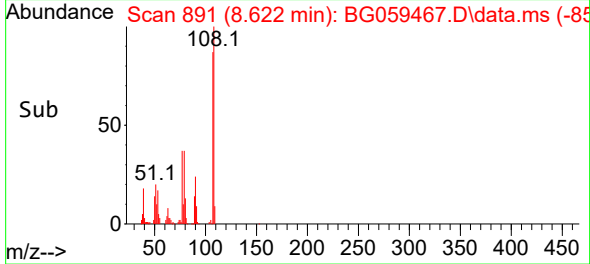
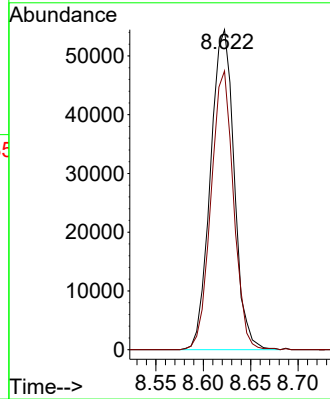
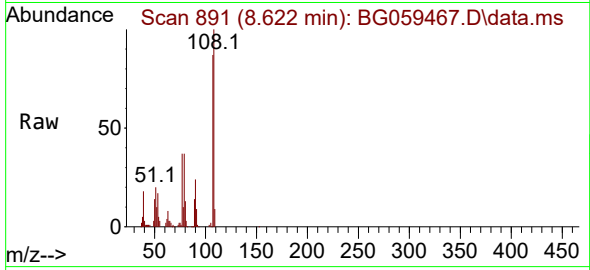




#13  
 2-Methylphenol  
 Concen: 43.208 ng/ul  
 RT: 8.622 min Scan# 890  
 Delta R.T. 0.002 min  
 Lab File: BG059467.D  
 Acq: 17 Oct 2023 21:02

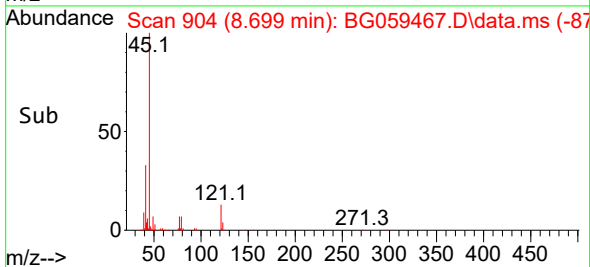
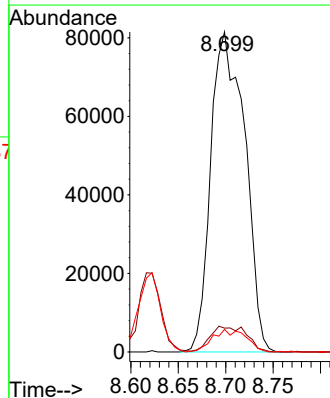
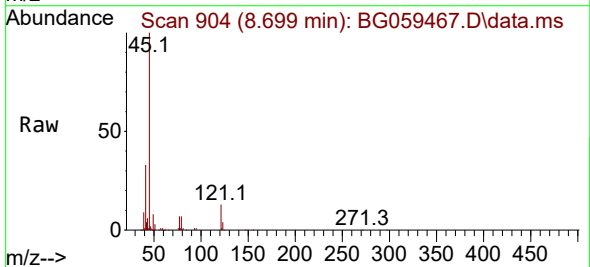
Instrument :  
 BNA\_G  
 ClientSampleId :  
 SSTD040416

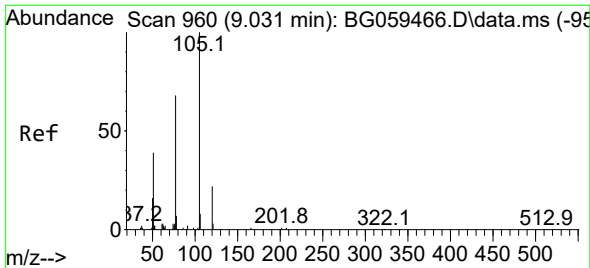
Tgt Ion:108 Resp: 94926  
 Ion Ratio Lower Upper  
 108 100  
 107 87.1 64.4 96.6



#14  
 2,2'-oxybis(1-Chloropropane)  
 Concen: 41.513 ng/ul  
 RT: 8.699 min Scan# 904  
 Delta R.T. 0.002 min  
 Lab File: BG059467.D  
 Acq: 17 Oct 2023 21:02

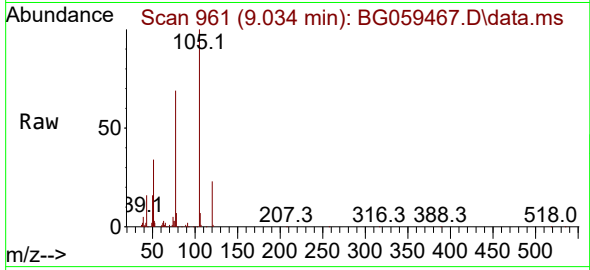
Tgt Ion: 45 Resp: 203117  
 Ion Ratio Lower Upper  
 45 100  
 77 7.5 6.4 9.6  
 79 7.1 6.4 9.6



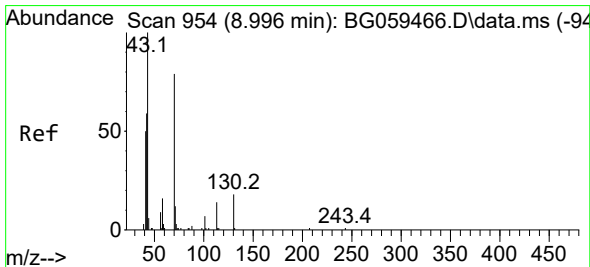
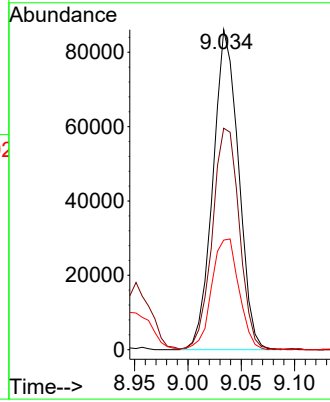
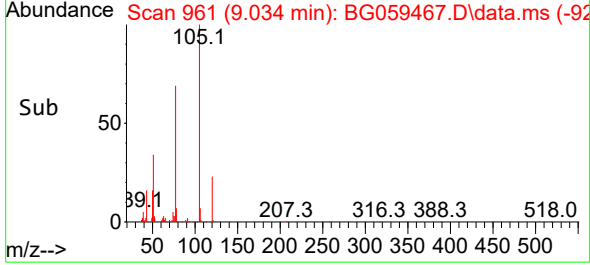


#16  
 Acetophenone  
 Concen: 41.729 ng/ul  
 RT: 9.034 min Scan# 901  
 Delta R.T. 0.002 min  
 Lab File: BG059467.D  
 Acq: 17 Oct 2023 21:02

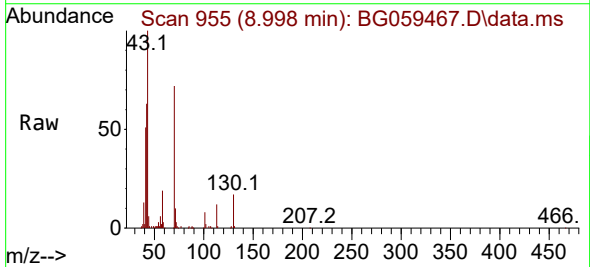
Instrument :  
 BNA\_G  
 ClientSampleId :  
 SSTD040416



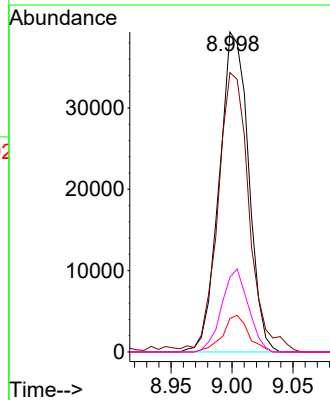
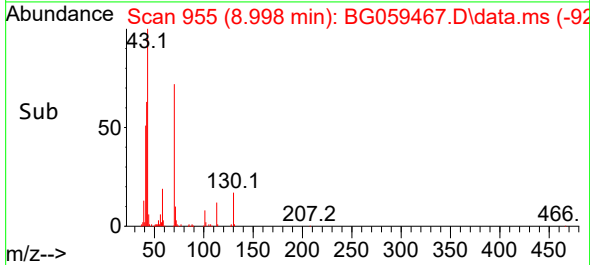
Tgt Ion:105 Resp: 143798  
 Ion Ratio Lower Upper  
 105 100  
 77 69.2 55.4 83.0  
 51 34.2 31.6 47.4



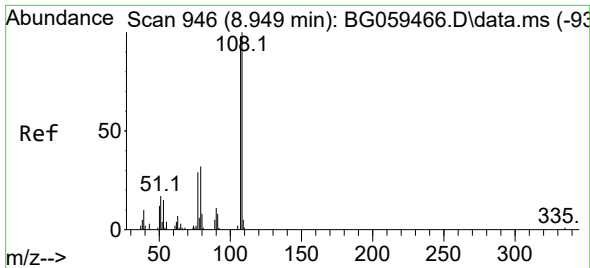
#17  
 N-Nitroso-di-n-propylamine  
 Concen: 41.369 ng/ul  
 RT: 8.998 min Scan# 955  
 Delta R.T. 0.002 min  
 Lab File: BG059467.D  
 Acq: 17 Oct 2023 21:02



Tgt Ion: 70 Resp: 65640  
 Ion Ratio Lower Upper  
 70 100  
 42 87.3 62.1 93.1  
 101 10.5 7.3 10.9  
 130 23.4 18.6 28.0

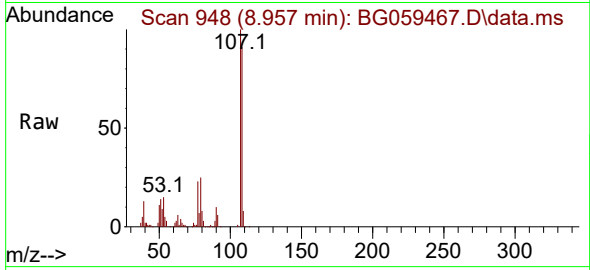




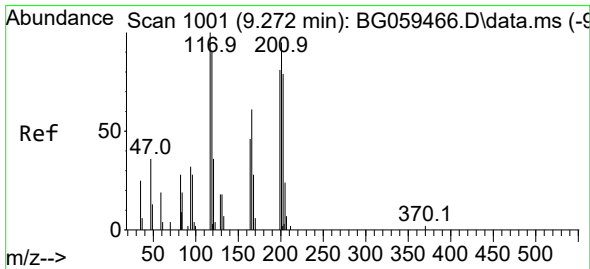
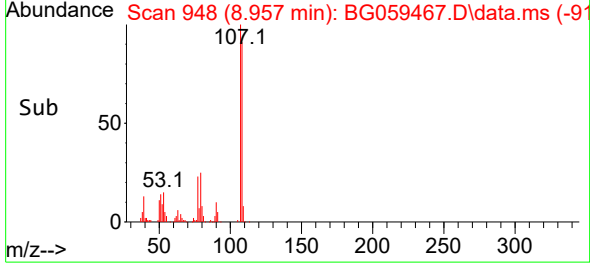
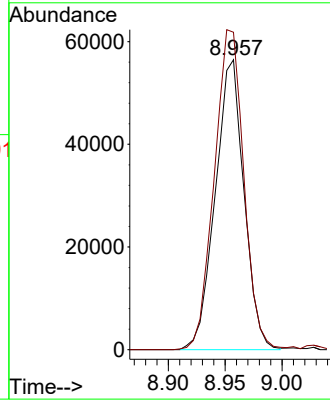


#18  
 4-Methylphenol  
 Concen: 41.587 ng/ul  
 RT: 8.957 min Scan# 946  
 Delta R.T. 0.008 min  
 Lab File: BG059467.D  
 Acq: 17 Oct 2023 21:02

Instrument :  
 BNA\_G  
 ClientSampleId :  
 SSTD040416

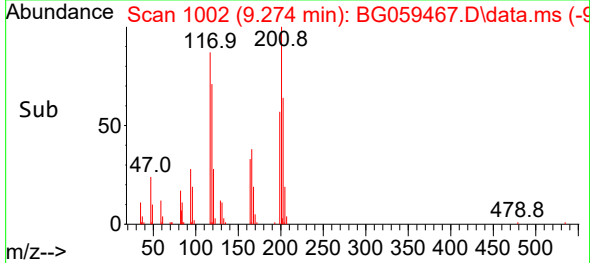
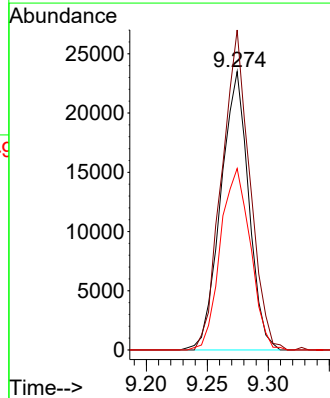
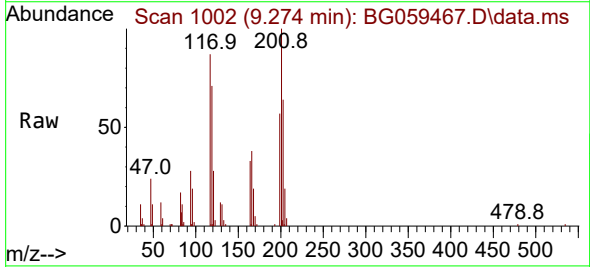


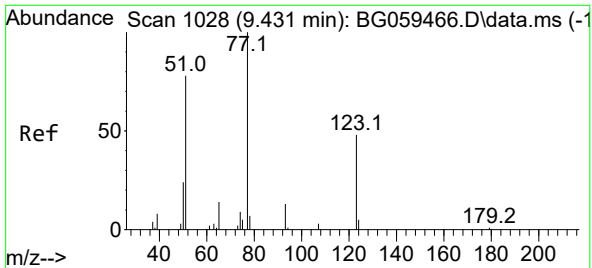
Tgt Ion:108 Resp: 99322  
 Ion Ratio Lower Upper  
 108 100  
 107 109.4 78.7 118.1



#19  
 Hexachloroethane  
 Concen: 43.825 ng/ul  
 RT: 9.274 min Scan# 1002  
 Delta R.T. 0.002 min  
 Lab File: BG059467.D  
 Acq: 17 Oct 2023 21:02

Tgt Ion:117 Resp: 37440  
 Ion Ratio Lower Upper  
 117 100  
 201 114.9 76.1 114.1#  
 199 65.2 65.0 97.4



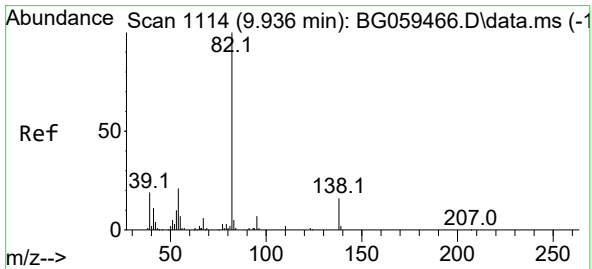
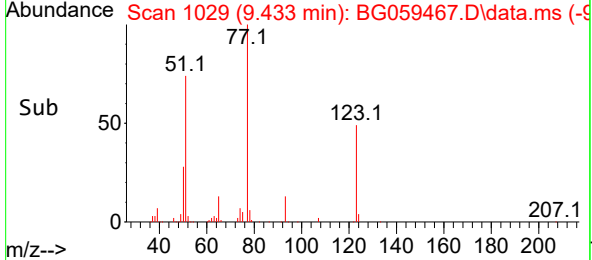
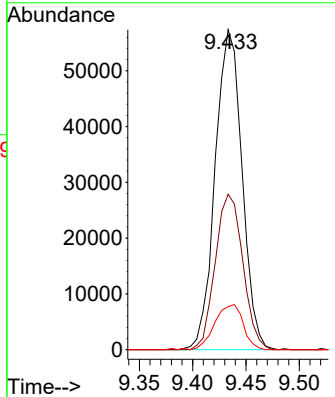
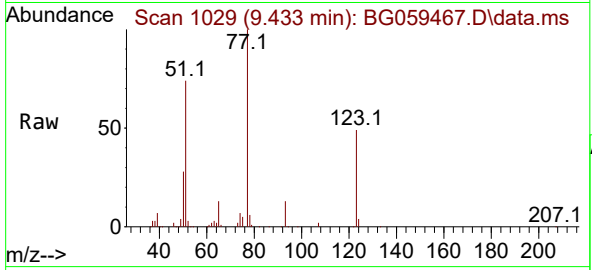


#22  
 Nitrobenzene  
 Concen: 30.046 ng/u1  
 RT: 9.433 min Scan# 1028  
 Delta R.T. 0.002 min  
 Lab File: BG059467.D  
 Acq: 17 Oct 2023 21:02

Instrument : BNA\_G  
 ClientSampleId : SSTD040416

Tgt Ion: 77 Resp: 100532

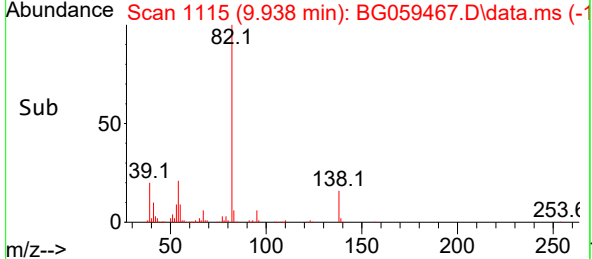
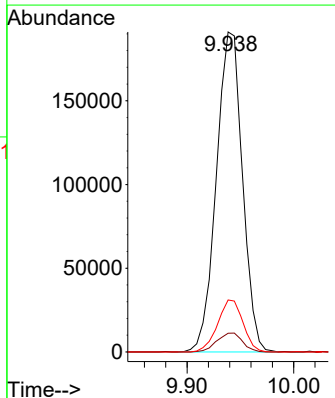
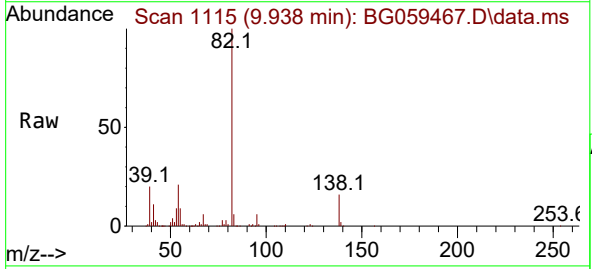
Ion	Ratio	Lower	Upper
77	100		
123	48.6	38.5	57.7
65	13.4	11.1	16.7

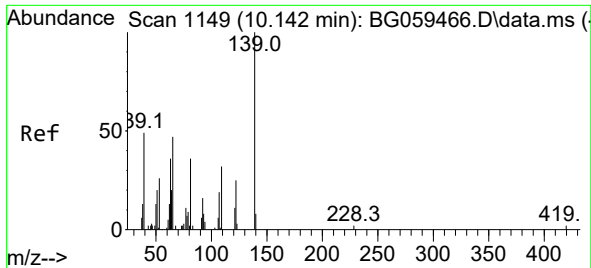


#23  
 Isophorone  
 Concen: 46.226 ng/u1  
 RT: 9.938 min Scan# 1115  
 Delta R.T. 0.002 min  
 Lab File: BG059467.D  
 Acq: 17 Oct 2023 21:02

Tgt Ion: 82 Resp: 324833

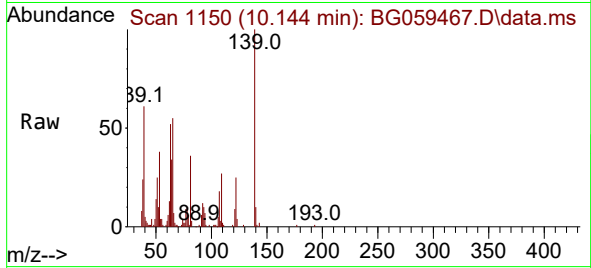
Ion	Ratio	Lower	Upper
82	100		
95	5.9	5.6	8.4
138	16.3	13.0	19.6



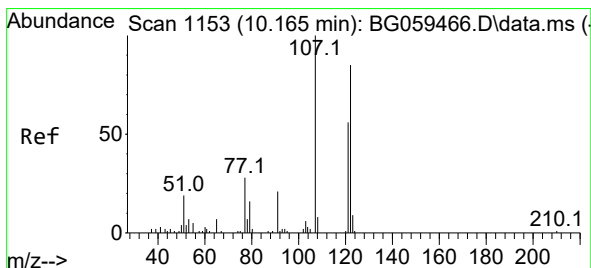
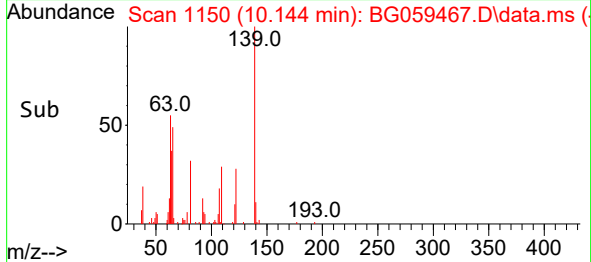
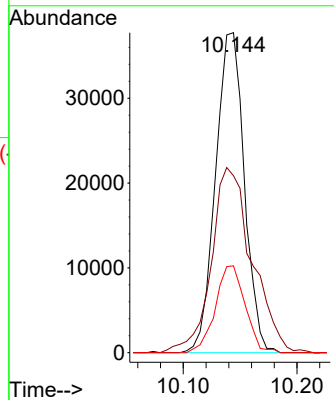


#25  
 2-Nitrophenol  
 Concen: 41.149 ng/ul  
 RT: 10.144 min Scan# 1149  
 Delta R.T. 0.002 min  
 Lab File: BG059467.D  
 Acq: 17 Oct 2023 21:02

Instrument :  
 BNA\_G  
 ClientSampleId :  
 SSTD040416

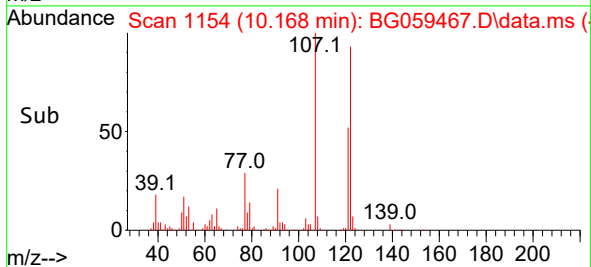
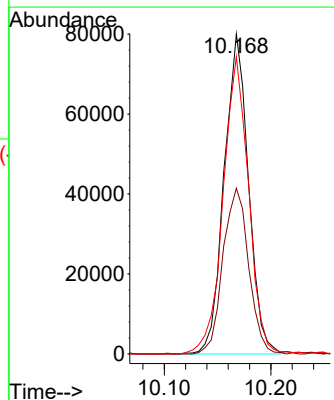
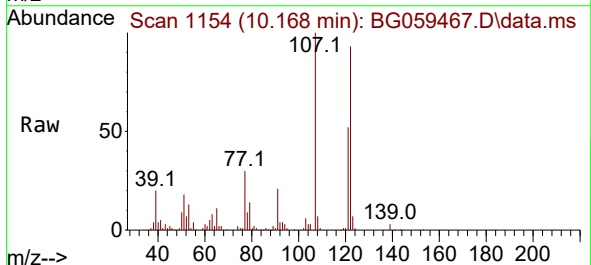


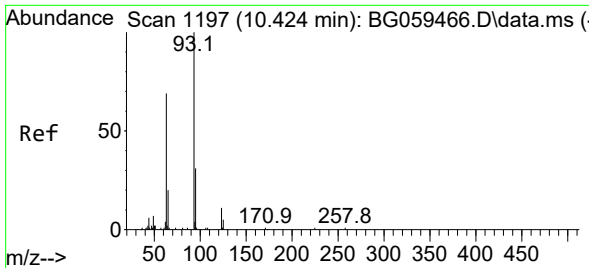
Tgt Ion:139 Resp: 66357  
 Ion Ratio Lower Upper  
 139 100  
 65 55.3 40.5 60.7  
 109 27.1 25.7 38.5



#26  
 2,4-Dimethylphenol  
 Concen: 38.401 ng/ul  
 RT: 10.168 min Scan# 1154  
 Delta R.T. 0.002 min  
 Lab File: BG059467.D  
 Acq: 17 Oct 2023 21:02

Tgt Ion:107 Resp: 126868  
 Ion Ratio Lower Upper  
 107 100  
 121 51.8 44.9 67.3  
 122 92.9 69.6 104.4



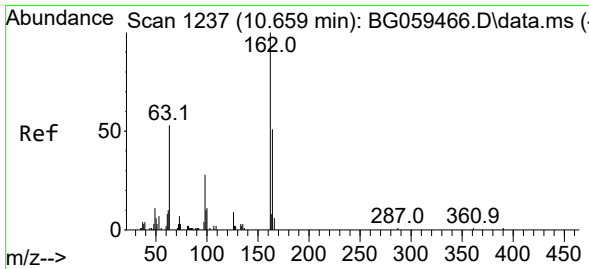
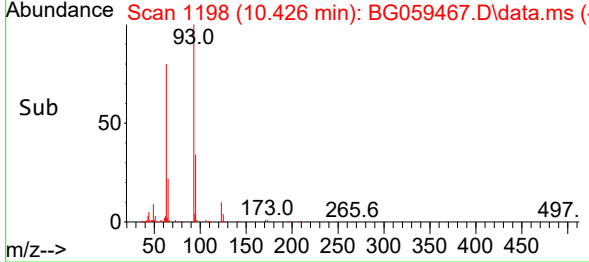
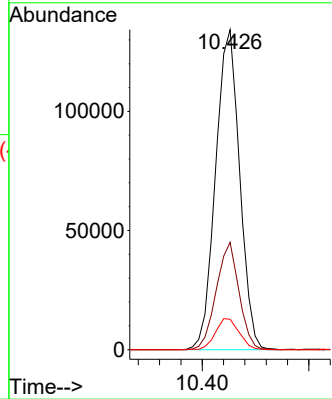
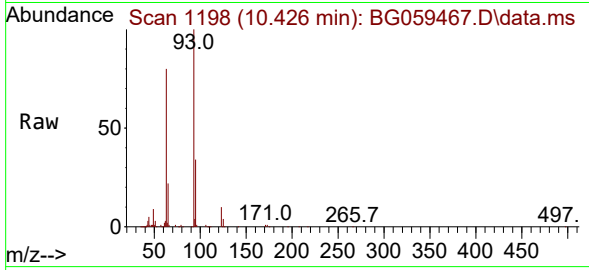


#27  
 Bis(2-Chloroethoxy)methane  
 Concen: 46.466 ng/ul  
 RT: 10.426 min Scan# 1198  
 Delta R.T. 0.002 min  
 Lab File: BG059467.D  
 Acq: 17 Oct 2023 21:02

Instrument :  
 BNA\_G  
 ClientSampleId :  
 SST040416

Tgt Ion: 93 Resp: 210004

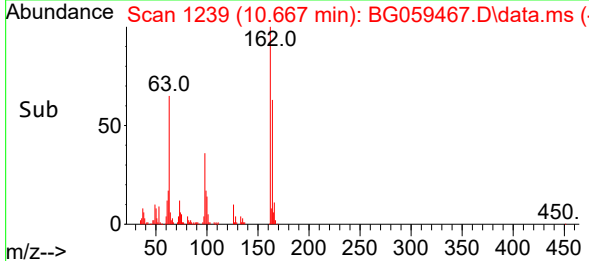
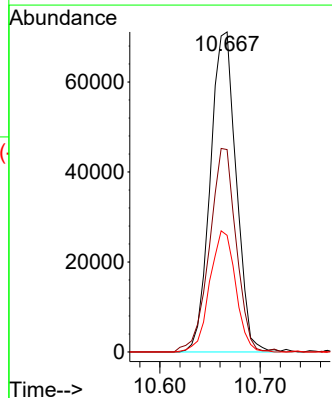
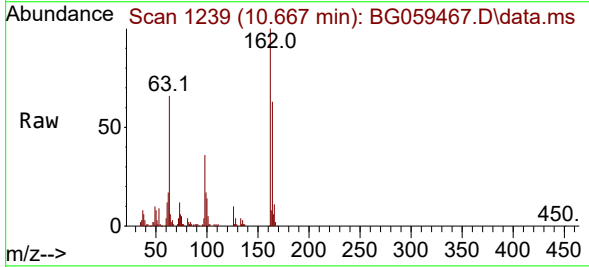
Ion	Ratio	Lower	Upper
93	100		
95	33.5	24.8	37.2
123	9.5	9.1	13.7

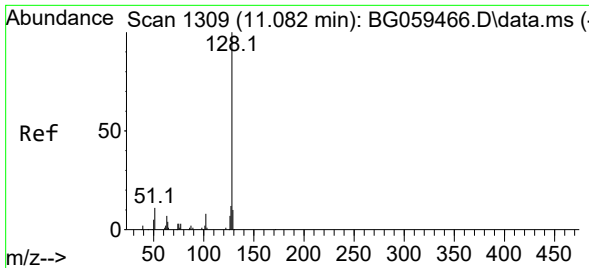


#29  
 2,4-Dichlorophenol  
 Concen: 43.018 ng/ul  
 RT: 10.667 min Scan# 1239  
 Delta R.T. 0.008 min  
 Lab File: BG059467.D  
 Acq: 17 Oct 2023 21:02

Tgt Ion: 162 Resp: 127630

Ion	Ratio	Lower	Upper
162	100		
164	63.3	40.9	61.3#
98	36.5	22.2	33.4#

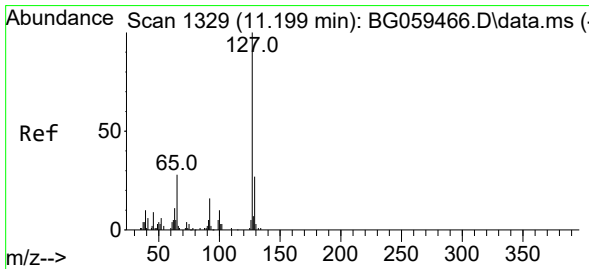
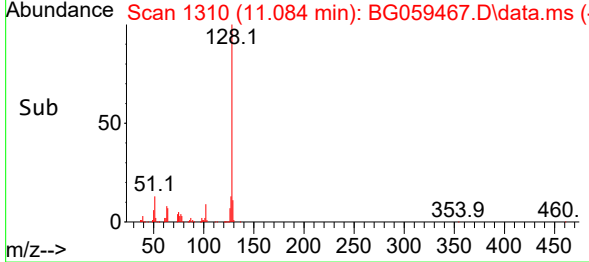
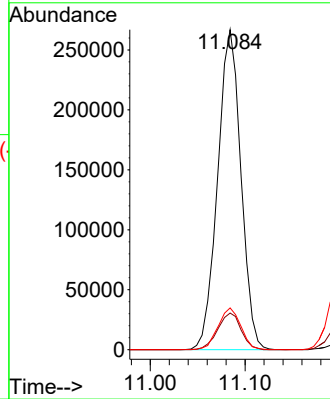
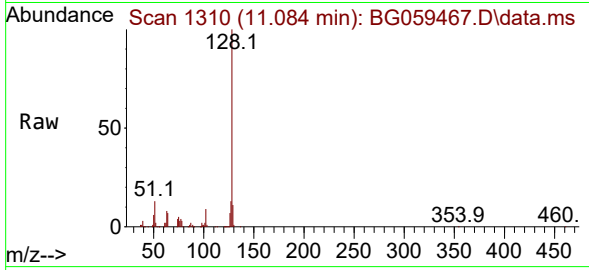




#30  
 Naphthalene  
 Concen: 41.347 ng/ul  
 RT: 11.084 min Scan# 1111  
 Delta R.T. 0.002 min  
 Lab File: BG059467.D  
 Acq: 17 Oct 2023 21:02

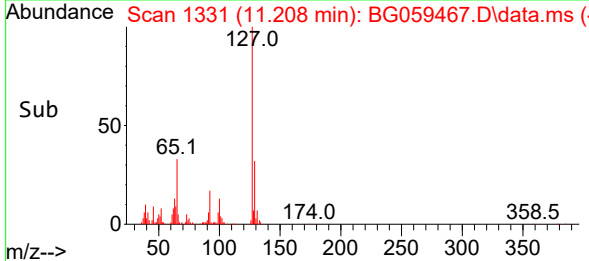
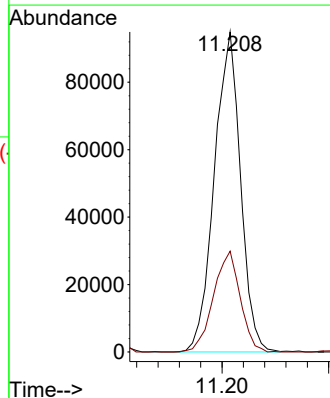
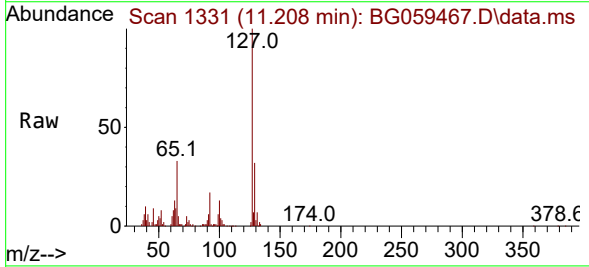
Instrument :  
 BNA\_G  
 ClientSampleId :  
 SSTD040416

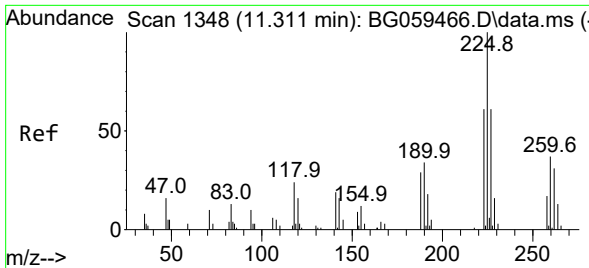
Tgt Ion:128 Resp: 455803  
 Ion Ratio Lower Upper  
 128 100  
 129 11.5 8.0 12.0  
 127 13.1 9.5 14.3



#32  
 4-Chloroaniline  
 Concen: 35.336 ng/ul  
 RT: 11.208 min Scan# 1331  
 Delta R.T. 0.008 min  
 Lab File: BG059467.D  
 Acq: 17 Oct 2023 21:02

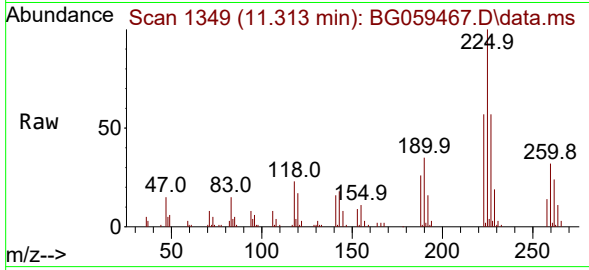
Tgt Ion:127 Resp: 161382  
 Ion Ratio Lower Upper  
 127 100  
 129 31.5 21.9 32.9



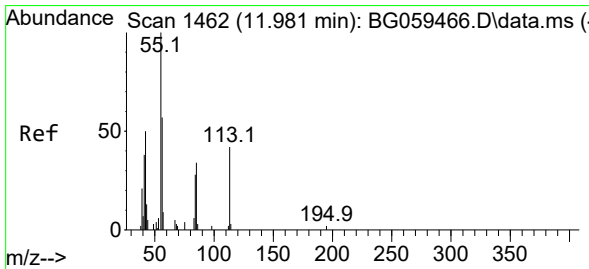
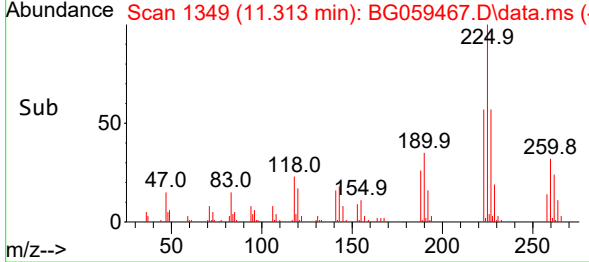
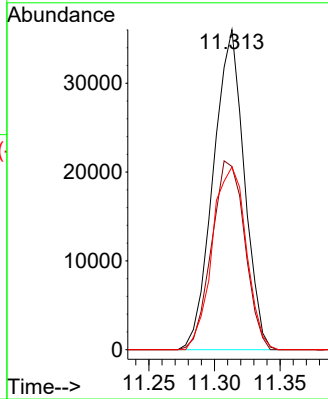


#33  
 Hexachlorobutadiene  
 Concen: 30.216 ng/ul  
 RT: 11.313 min Scan# 11  
 Delta R.T. 0.002 min  
 Lab File: BG059467.D  
 Acq: 17 Oct 2023 21:02

Instrument :  
 BNA\_G  
 ClientSampleId :  
 SSTD040416

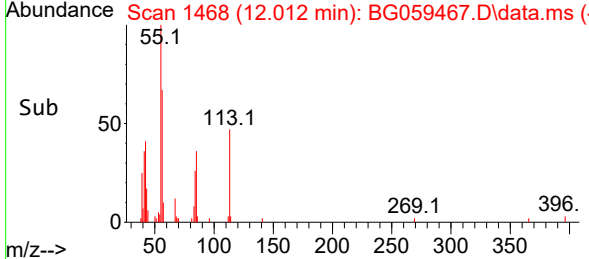
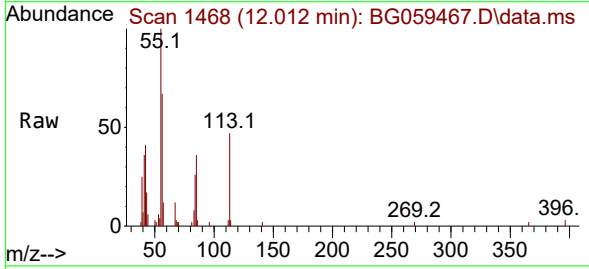
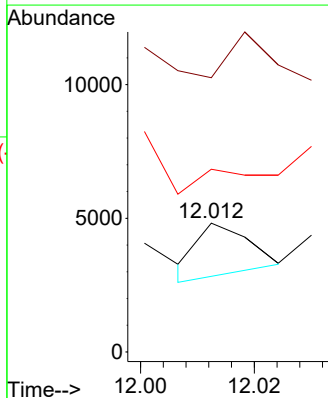


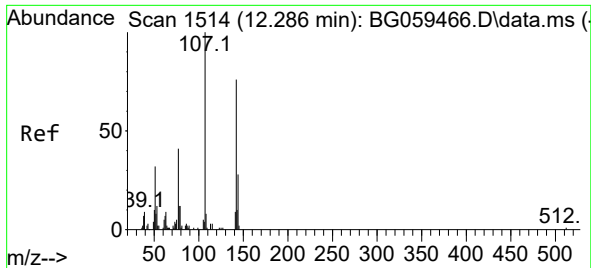
Tgt Ion:225 Resp: 59106  
 Ion Ratio Lower Upper  
 225 100  
 223 57.3 48.7 73.1  
 227 59.8 50.5 75.7



#34  
 Caprolactam  
 Concen: 1.241 ng/ul  
 RT: 12.012 min Scan# 1468  
 Delta R.T. 0.032 min  
 Lab File: BG059467.D  
 Acq: 17 Oct 2023 21:02

Tgt Ion:113 Resp: 1270  
 Ion Ratio Lower Upper  
 113 100  
 55 212.9 191.8 287.6  
 56 141.8 109.6 164.4

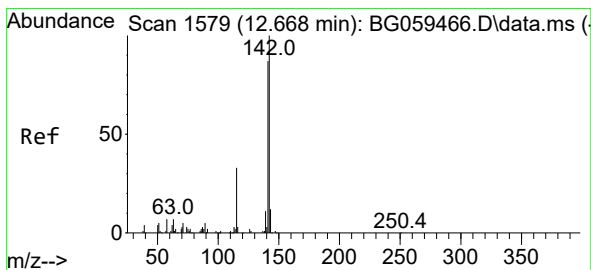
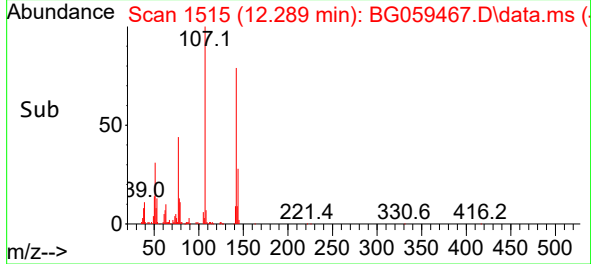
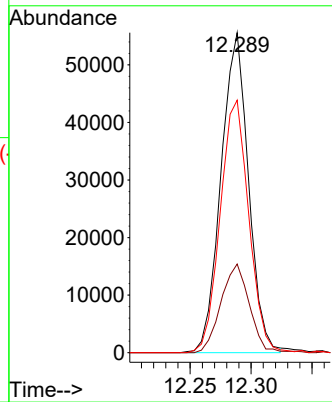
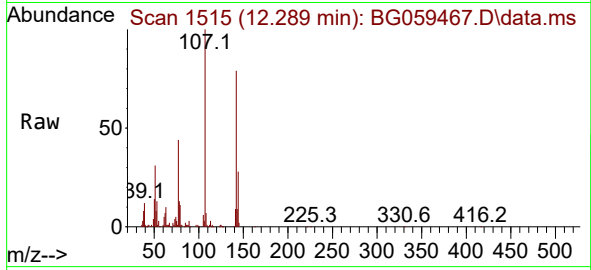




#35  
 4-Chloro-3-methylphenol  
 Concen: 29.332 ng/ul  
 RT: 12.289 min Scan# 1515  
 Delta R.T. 0.002 min  
 Lab File: BG059467.D  
 Acq: 17 Oct 2023 21:02

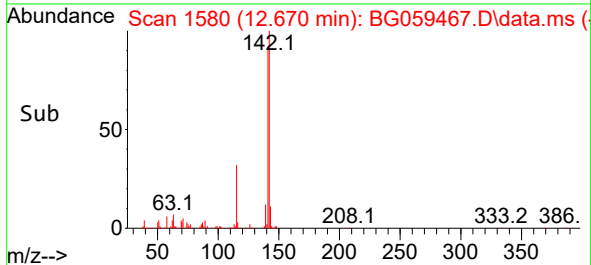
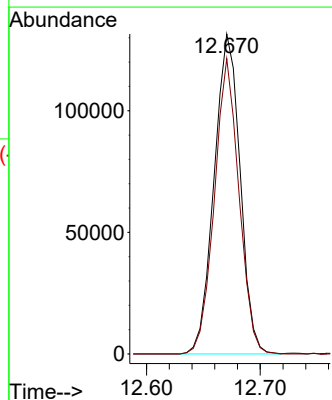
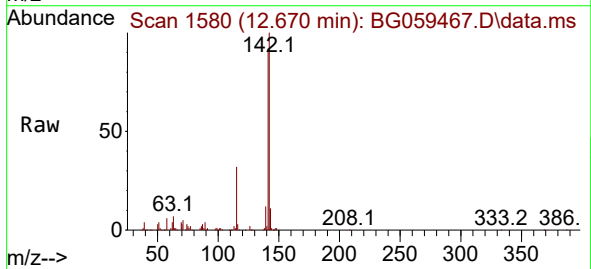
Instrument : BNA\_G  
 ClientSampleId : SSTD040416

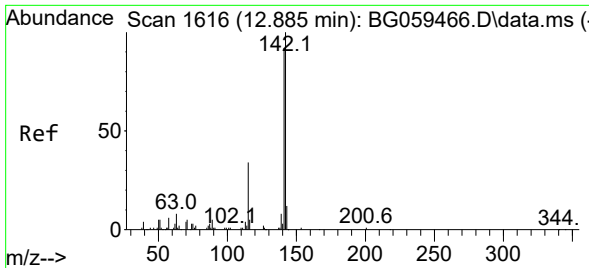
Tgt Ion	Resp	Lower	Upper
107	87065	100	100
144	27.7	22.5	33.7
142	78.9	60.6	90.8



#36  
 2-Methylnaphthalene  
 Concen: 29.637 ng/ul  
 RT: 12.670 min Scan# 1580  
 Delta R.T. 0.002 min  
 Lab File: BG059467.D  
 Acq: 17 Oct 2023 21:02

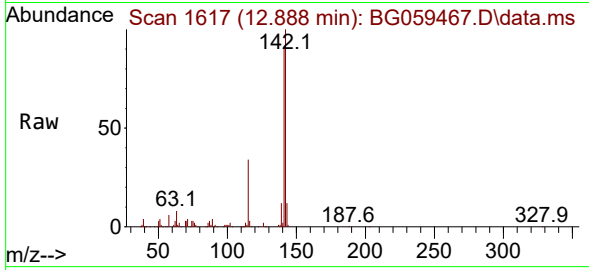
Tgt Ion	Resp	Lower	Upper
142	208509	100	100
141	92.3	69.4	104.0



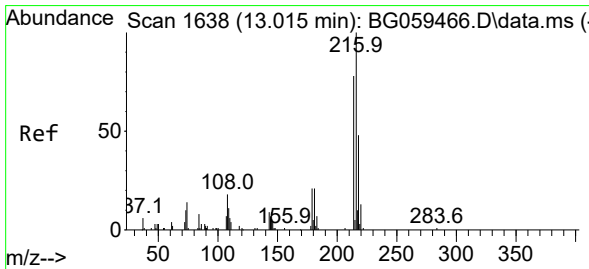
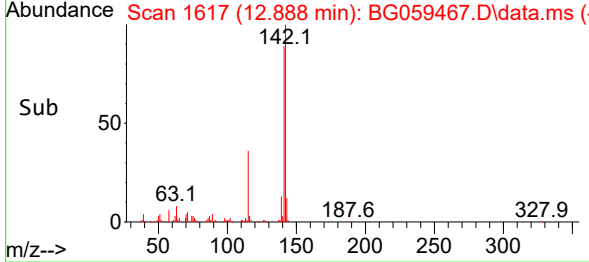
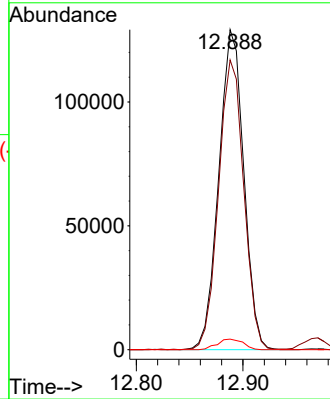


#37  
 1-Methylnaphthalene  
 Concen: 29.031 ng/ul  
 RT: 12.888 min Scan# 1617  
 Delta R.T. 0.002 min  
 Lab File: BG059467.D  
 Acq: 17 Oct 2023 21:02

Instrument : BNA\_G  
 ClientSampleId : SSTD040416

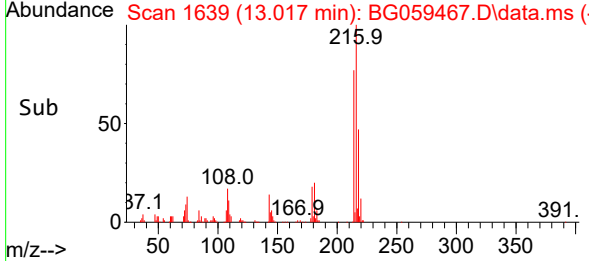
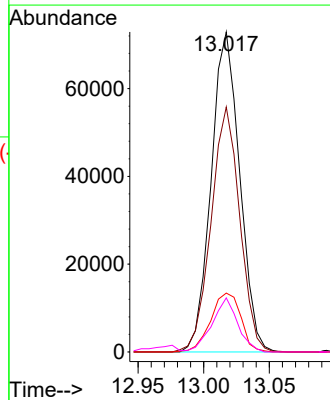
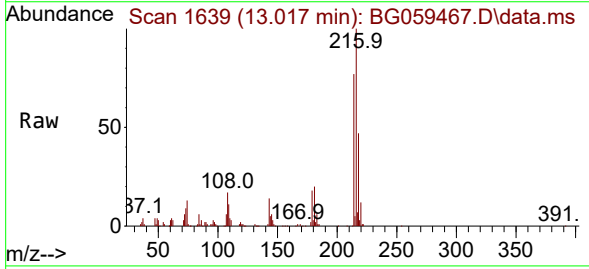


Tgt Ion:142 Resp: 209927  
 Ion Ratio Lower Upper  
 142 100  
 141 90.6 73.4 110.2  
 116 3.3 3.8 5.6#

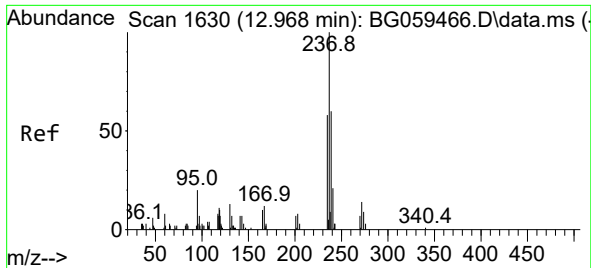


#39  
 1,2,4,5-Tetrachlorobenzene  
 Concen: 42.980 ng/ul  
 RT: 13.017 min Scan# 1639  
 Delta R.T. 0.002 min  
 Lab File: BG059467.D  
 Acq: 17 Oct 2023 21:02

Tgt Ion:216 Resp: 110228  
 Ion Ratio Lower Upper  
 216 100  
 214 76.6 62.8 94.2  
 179 18.4 16.4 24.6  
 108 16.9 15.1 22.7



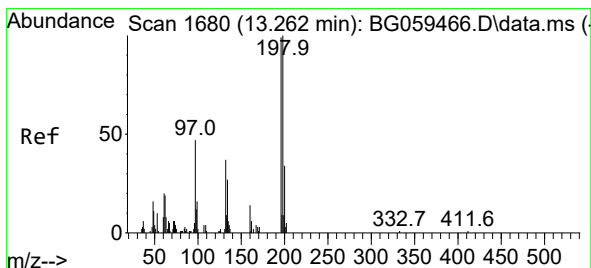
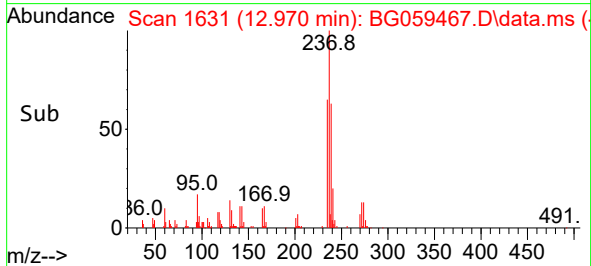
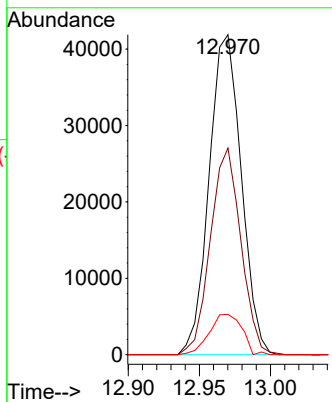
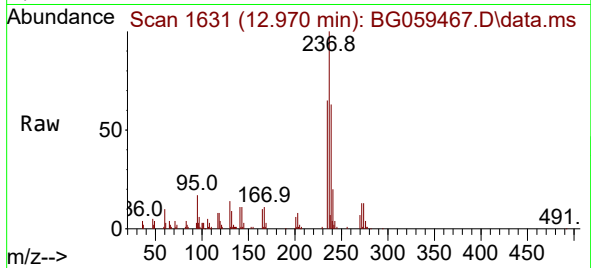




#40  
 Hexachlorocyclopentadiene  
 Concen: 44.389 ng/ul  
 RT: 12.970 min Scan# 1631  
 Delta R.T. 0.002 min  
 Lab File: BG059467.D  
 Acq: 17 Oct 2023 21:02

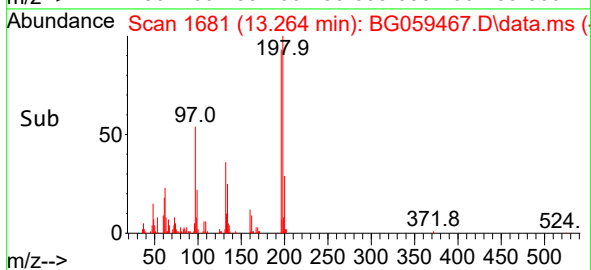
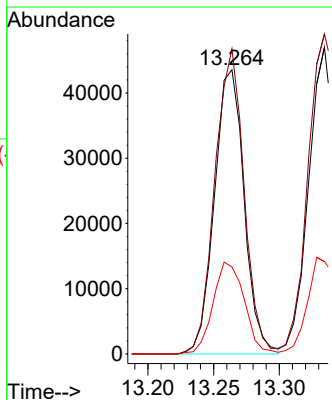
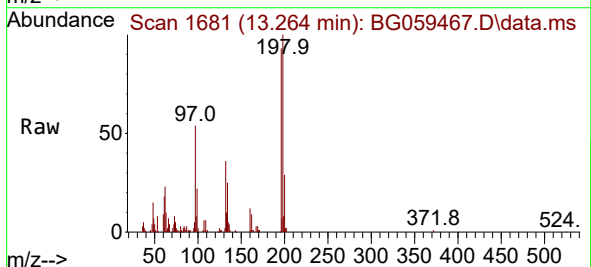
Instrument : BNA\_G  
 ClientSampleId : SSTD040416

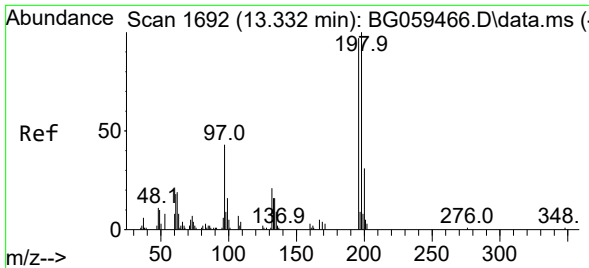
Tgt Ion	Resp	Lower	Upper
237	100		
235	64.6	46.2	69.2
272	12.6	10.9	16.3



#41  
 2,4,6-Trichlorophenol  
 Concen: 43.924 ng/ul  
 RT: 13.264 min Scan# 1681  
 Delta R.T. 0.002 min  
 Lab File: BG059467.D  
 Acq: 17 Oct 2023 21:02

Tgt Ion	Resp	Lower	Upper
196	100		
198	107.4	81.2	121.8
200	30.6	29.8	44.6

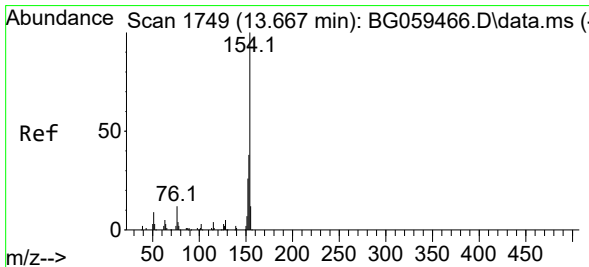
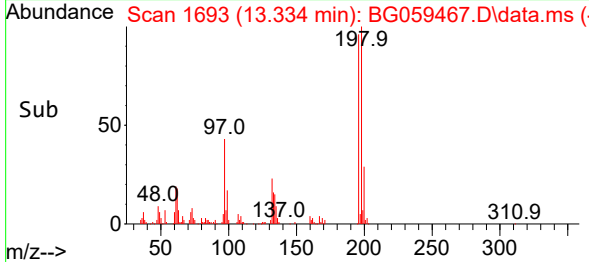
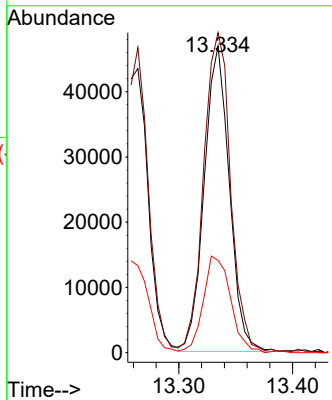
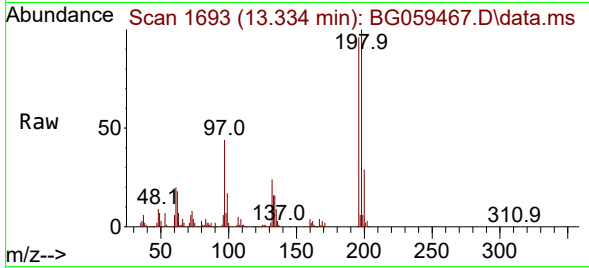




#42  
 2,4,5-Trichlorophenol  
 Concen: 42.311 ng/ul  
 RT: 13.334 min Scan# 1692  
 Delta R.T. 0.002 min  
 Lab File: BG059467.D  
 Acq: 17 Oct 2023 21:02

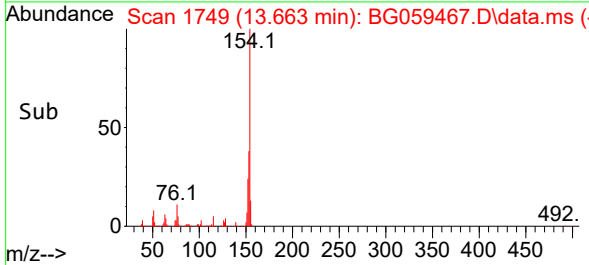
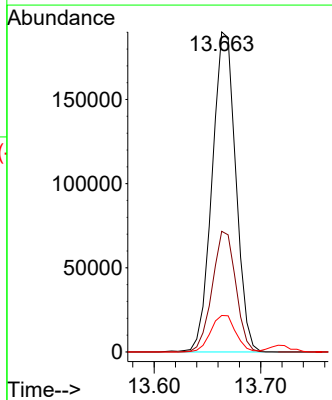
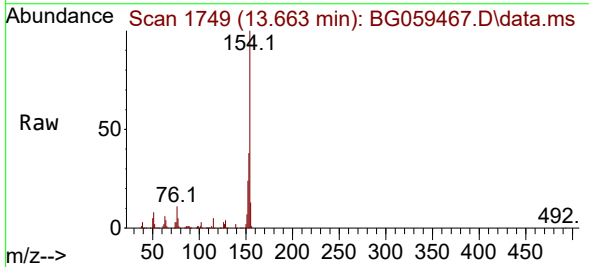
Instrument : BNA\_G  
 ClientSampleId : SSTD040416

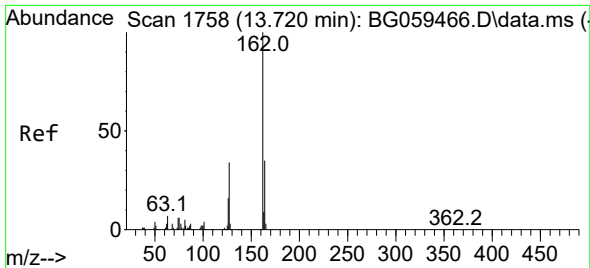
Tgt Ion	Resp	Lower	Upper
196	100		
198	104.3	81.0	121.6
200	30.1	25.0	37.6



#43  
 1,1'-Biphenyl  
 Concen: 41.326 ng/ul  
 RT: 13.663 min Scan# 1749  
 Delta R.T. -0.003 min  
 Lab File: BG059467.D  
 Acq: 17 Oct 2023 21:02

Tgt Ion	Resp	Lower	Upper
154	100		
153	37.7	30.3	45.5
76	11.4	9.4	14.0





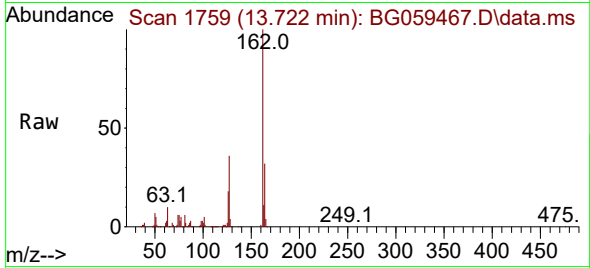
#44  
 2-Chloronaphthalene  
 Concen: 41.136 ng/ul  
 RT: 13.722 min Scan# 1758  
 Delta R.T. 0.002 min  
 Lab File: BG059467.D  
 Acq: 17 Oct 2023 21:02

Instrument :

BNA\_G

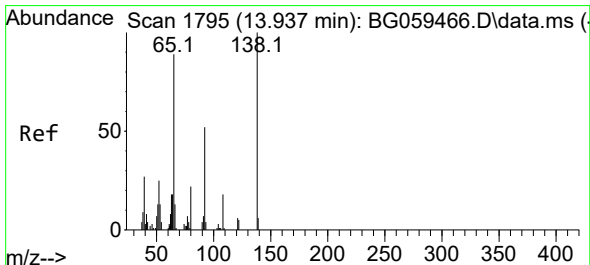
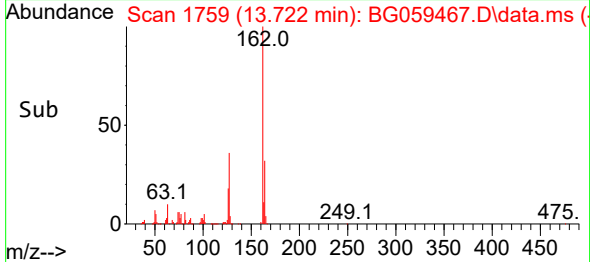
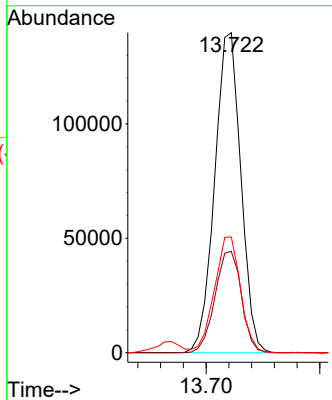
ClientSampleId :

SSTD040416



Tgt Ion:162 Resp: 223475

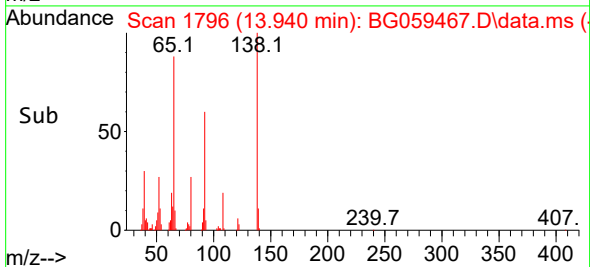
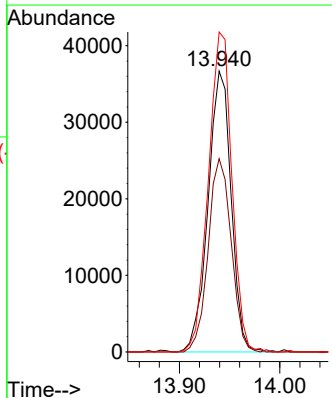
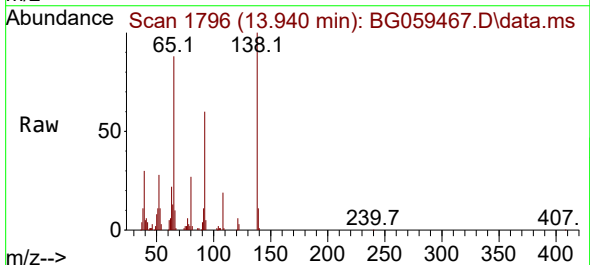
Ion	Ratio	Lower	Upper
162	100		
164	31.7	28.0	42.0
127	36.1	27.7	41.5

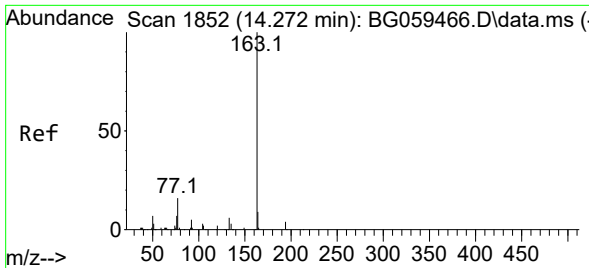


#45  
 2-Nitroaniline  
 Concen: 40.999 ng/ul  
 RT: 13.940 min Scan# 1796  
 Delta R.T. 0.002 min  
 Lab File: BG059467.D  
 Acq: 17 Oct 2023 21:02

Tgt Ion: 65 Resp: 58761

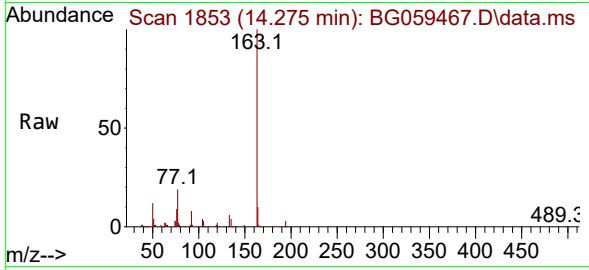
Ion	Ratio	Lower	Upper
65	100		
92	68.8	47.0	70.4
138	114.0	89.8	134.8



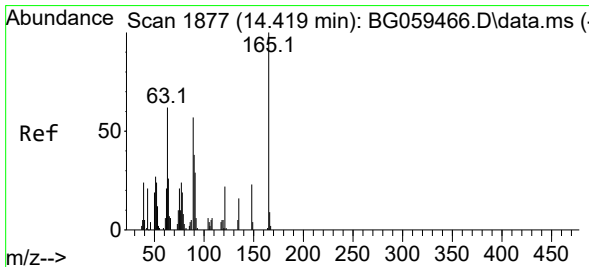
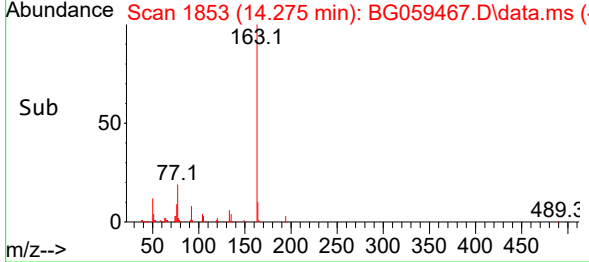
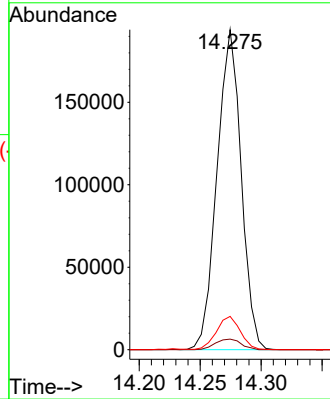


#47  
 Dimethylphthalate  
 Concen: 40.351 ng/ul  
 RT: 14.275 min Scan# 1853  
 Delta R.T. 0.002 min  
 Lab File: BG059467.D  
 Acq: 17 Oct 2023 21:02

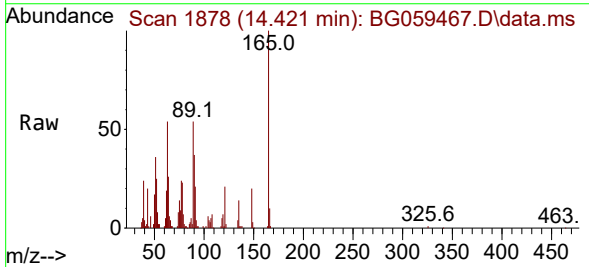
Instrument :  
 BNA\_G  
 ClientSampleId :  
 SSTD040416



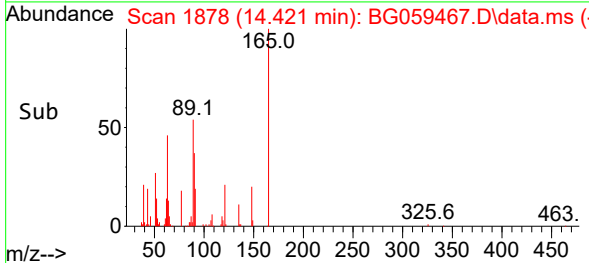
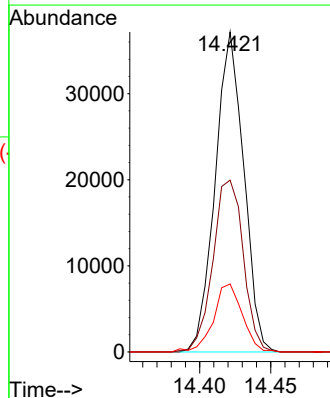
Tgt Ion:163 Resp: 267040  
 Ion Ratio Lower Upper  
 163 100  
 194 3.3 3.1 4.7  
 164 10.4 7.3 10.9

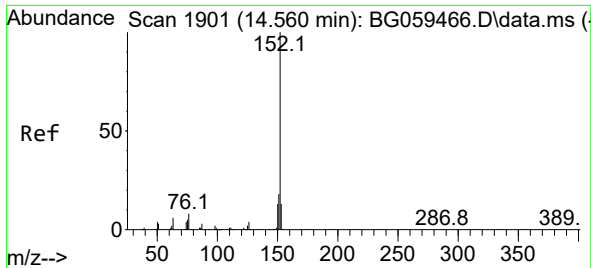


#48  
 2,6-Dinitrotoluene  
 Concen: 42.847 ng/ul  
 RT: 14.421 min Scan# 1878  
 Delta R.T. 0.002 min  
 Lab File: BG059467.D  
 Acq: 17 Oct 2023 21:02



Tgt Ion:165 Resp: 51940  
 Ion Ratio Lower Upper  
 165 100  
 89 53.7 45.3 67.9  
 121 21.3 17.4 26.0





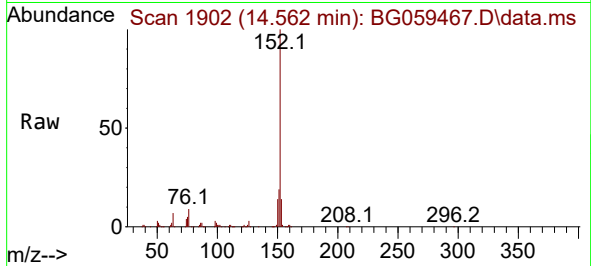
#50  
 Acenaphthylene  
 Concen: 41.634 ng/ul  
 RT: 14.562 min Scan# 1902  
 Delta R.T. 0.002 min  
 Lab File: BG059467.D  
 Acq: 17 Oct 2023 21:02

Instrument :

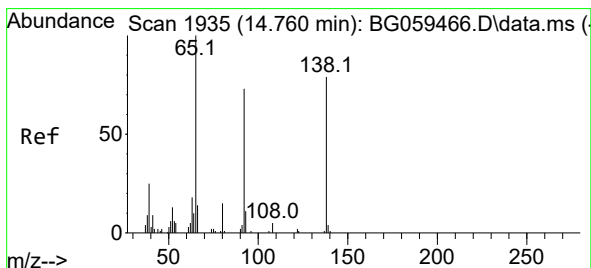
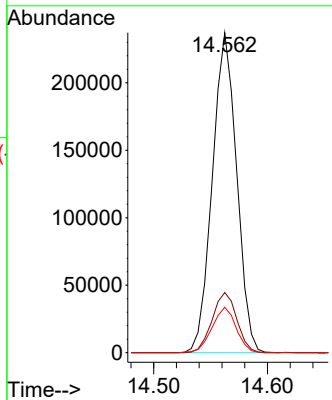
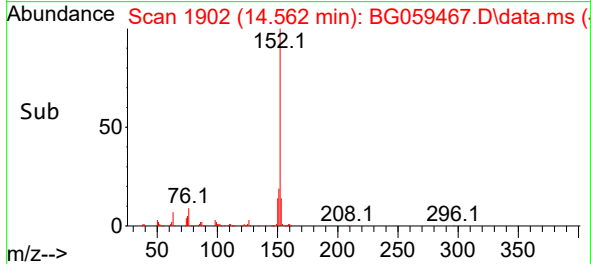
BNA\_G

ClientSampleId :

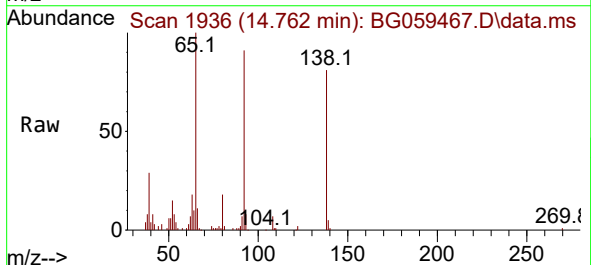
SSTD040416



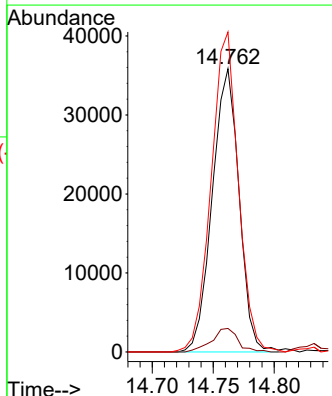
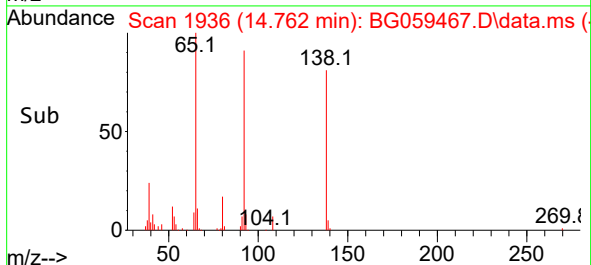
Tgt Ion:152 Resp: 352559  
 Ion Ratio Lower Upper  
 152 100  
 151 18.8 14.5 21.7  
 153 14.2 10.4 15.6

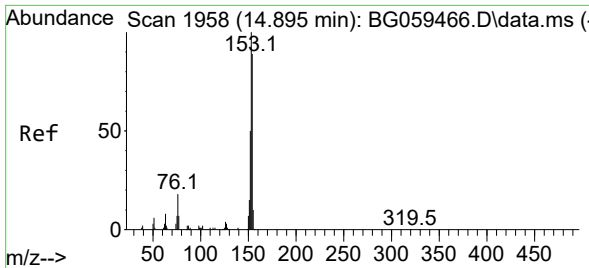


#51  
 3-Nitroaniline  
 Concen: 41.749 ng/ul  
 RT: 14.762 min Scan# 1936  
 Delta R.T. 0.002 min  
 Lab File: BG059467.D  
 Acq: 17 Oct 2023 21:02



Tgt Ion:138 Resp: 54809  
 Ion Ratio Lower Upper  
 138 100  
 108 8.3 5.3 7.9#  
 92 113.0 74.4 111.6#



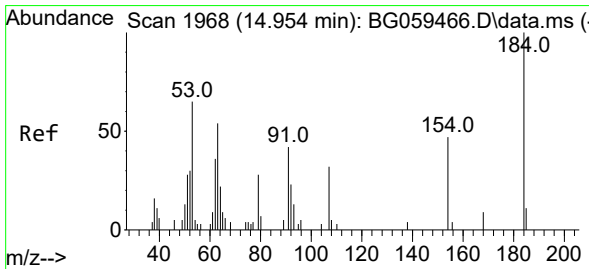
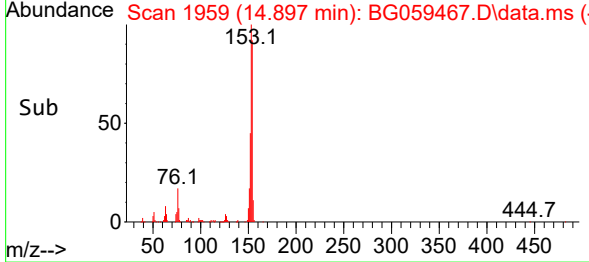
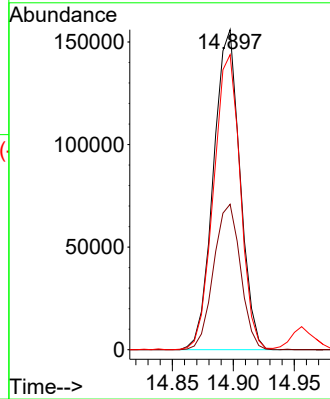
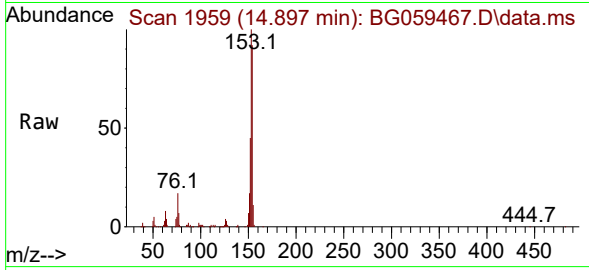


#52  
 Acenaphthene  
 Concen: 40.520 ng/uI  
 RT: 14.897 min Scan# 1959  
 Delta R.T. 0.002 min  
 Lab File: BG059467.D  
 Acq: 17 Oct 2023 21:02

Instrument : BNA\_G  
 ClientSampleId : SSTD040416

Tgt Ion:153 Resp: 236267

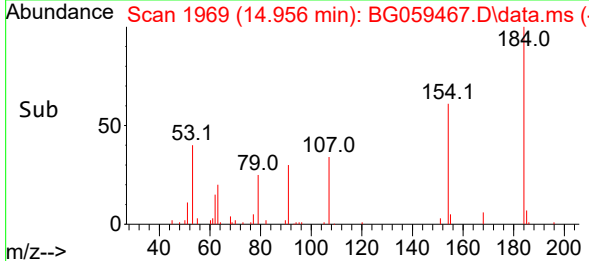
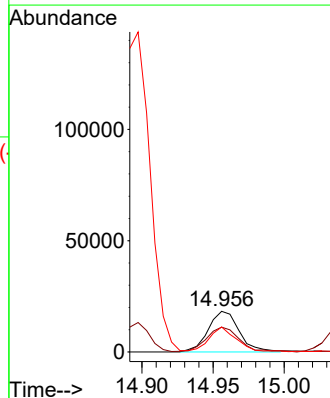
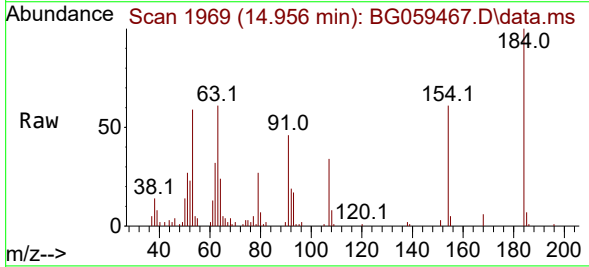
Ion	Ratio	Lower	Upper
153	100		
152	45.5	40.0	60.0
154	92.2	72.0	108.0

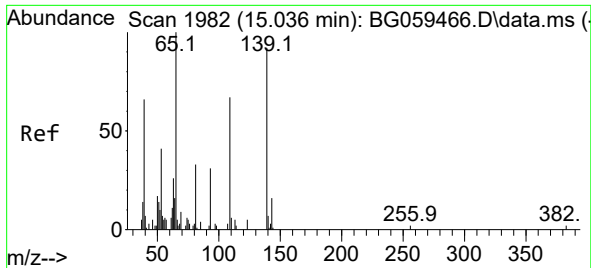


#53  
 2,4-Dinitrophenol  
 Concen: 42.237 ng/uI  
 RT: 14.956 min Scan# 1969  
 Delta R.T. 0.002 min  
 Lab File: BG059467.D  
 Acq: 17 Oct 2023 21:02

Tgt Ion:184 Resp: 27803

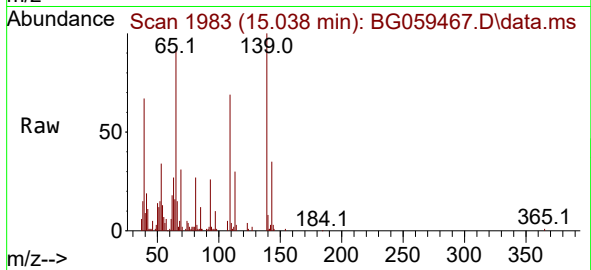
Ion	Ratio	Lower	Upper
184	100		
63	60.8	43.0	64.6
154	61.2	48.9	73.3



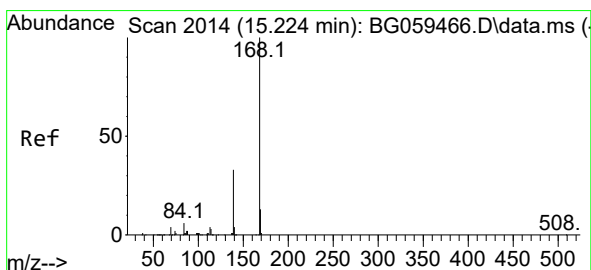
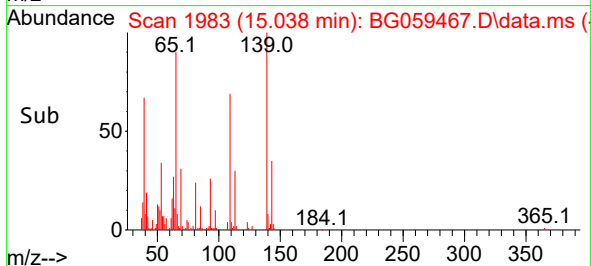
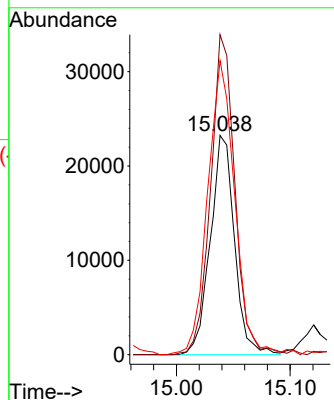


#55  
 4-Nitrophenol  
 Concen: 41.363 ng/ul  
 RT: 15.038 min Scan# 1982  
 Delta R.T. 0.002 min  
 Lab File: BG059467.D  
 Acq: 17 Oct 2023 21:02

Instrument :  
 BNA\_G  
 ClientSampleId :  
 SSTD040416

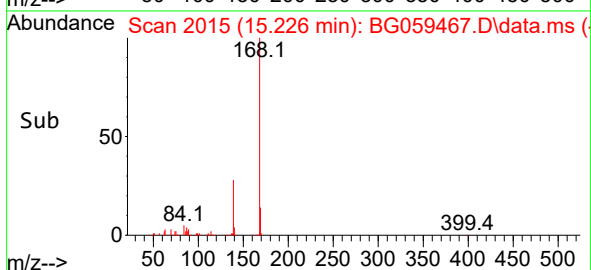
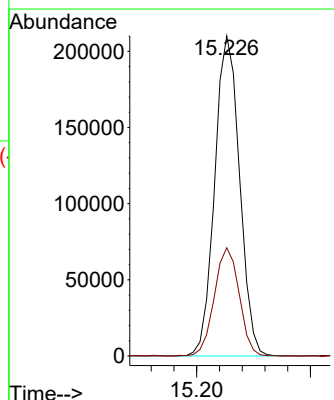
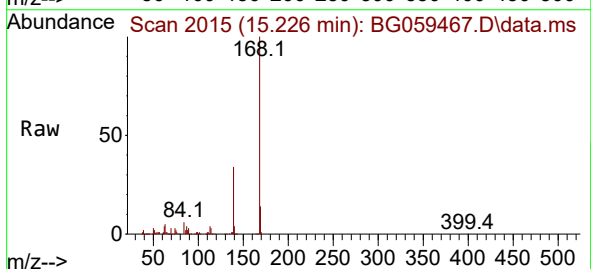


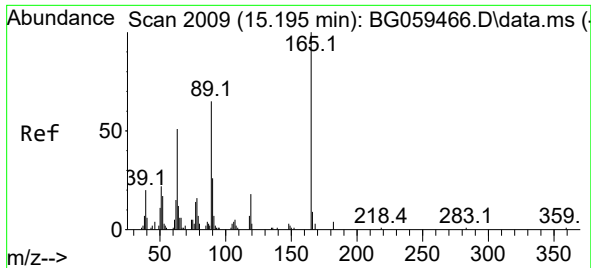
Tgt Ion:109 Resp: 34367  
 Ion Ratio Lower Upper  
 109 100  
 139 146.0 109.6 164.4  
 65 134.1 121.4 182.0



#56  
 Dibenzofuran  
 Concen: 40.219 ng/ul  
 RT: 15.226 min Scan# 2015  
 Delta R.T. 0.002 min  
 Lab File: BG059467.D  
 Acq: 17 Oct 2023 21:02

Tgt Ion:168 Resp: 318798  
 Ion Ratio Lower Upper  
 168 100  
 139 33.8 27.0 40.4

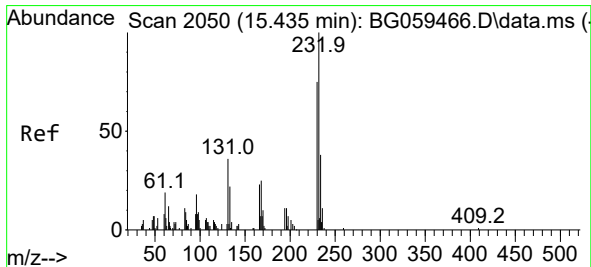
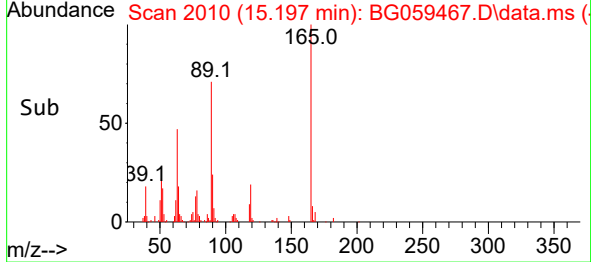
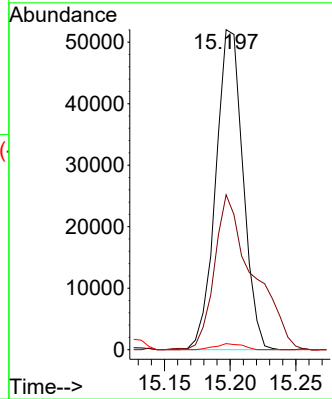
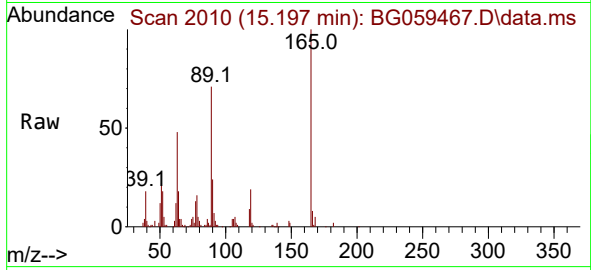




#57  
 2,4-Dinitrotoluene  
 Concen: 42.831 ng/ul  
 RT: 15.197 min Scan# 2010  
 Delta R.T. 0.002 min  
 Lab File: BG059467.D  
 Acq: 17 Oct 2023 21:02

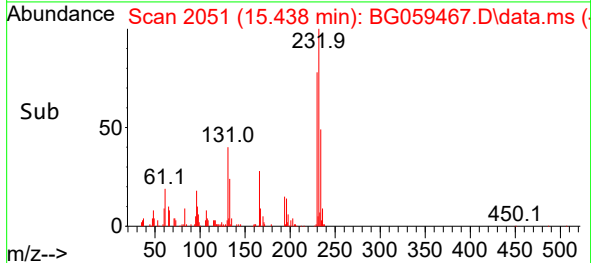
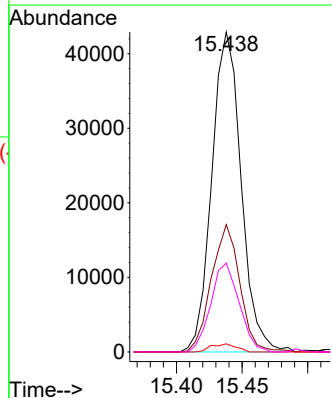
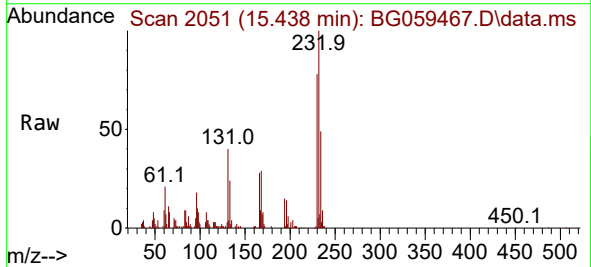
Instrument :  
 BNA\_G  
 ClientSampleId :  
 SSTD040416

Tgt Ion:165 Resp: 75088  
 Ion Ratio Lower Upper  
 165 100  
 63 48.4 41.1 61.7  
 182 1.9 3.0 4.4#

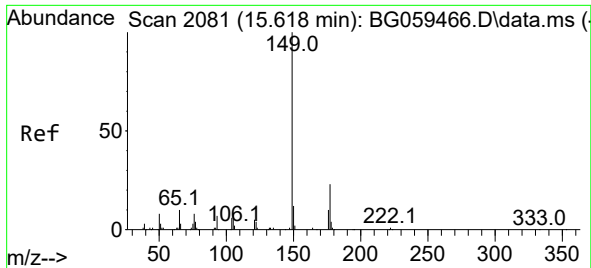


#58  
 2,3,4,6-Tetrachlorophenol  
 Concen: 43.100 ng/ul  
 RT: 15.438 min Scan# 2051  
 Delta R.T. 0.002 min  
 Lab File: BG059467.D  
 Acq: 17 Oct 2023 21:02

Tgt Ion:232 Resp: 66442  
 Ion Ratio Lower Upper  
 232 100  
 131 39.8 28.6 43.0  
 130 2.5 2.2 3.2  
 166 27.8 18.2 27.2#







#59  
 Diethylphthalate  
 Concen: 39.348 ng/ul  
 RT: 15.620 min Scan# 2082  
 Delta R.T. 0.002 min  
 Lab File: BG059467.D  
 Acq: 17 Oct 2023 21:02

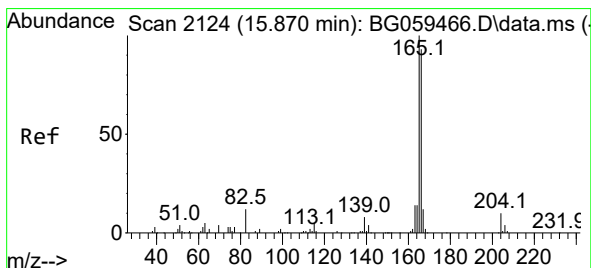
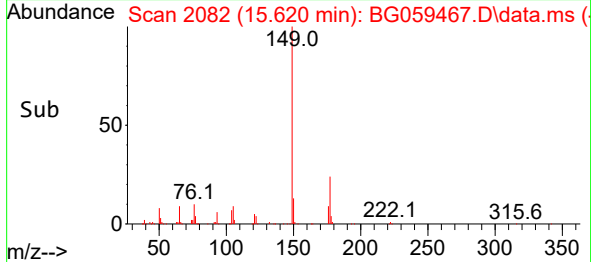
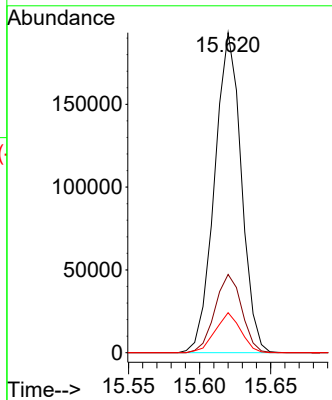
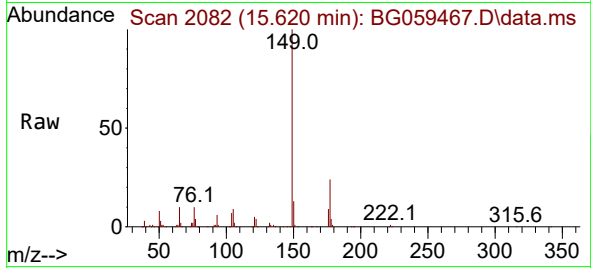
Instrument :

BNA\_G

ClientSampleId :

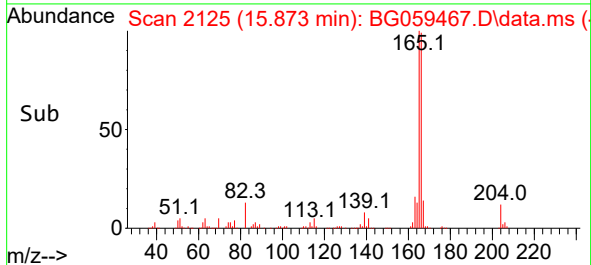
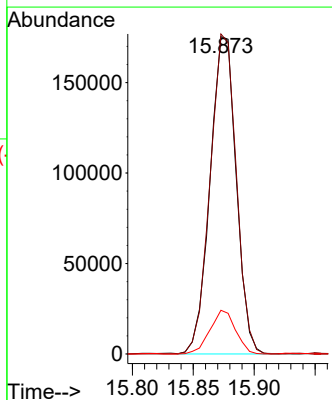
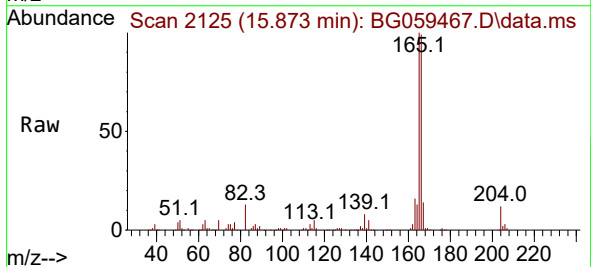
SSTD040416

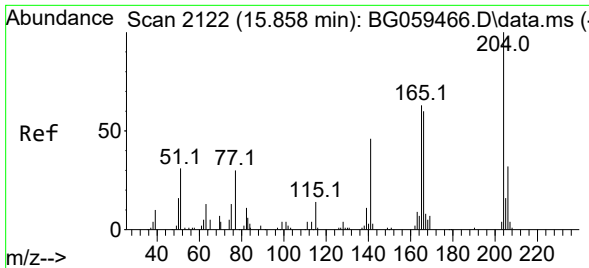
Tgt Ion:149 Resp: 252538  
 Ion Ratio Lower Upper  
 149 100  
 177 24.4 18.2 27.2  
 150 12.5 9.9 14.9



#61  
 Fluorene  
 Concen: 39.987 ng/ul  
 RT: 15.873 min Scan# 2125  
 Delta R.T. 0.002 min  
 Lab File: BG059467.D  
 Acq: 17 Oct 2023 21:02

Tgt Ion:166 Resp: 262084  
 Ion Ratio Lower Upper  
 166 100  
 165 100.8 85.6 128.4  
 167 13.8 9.8 14.8





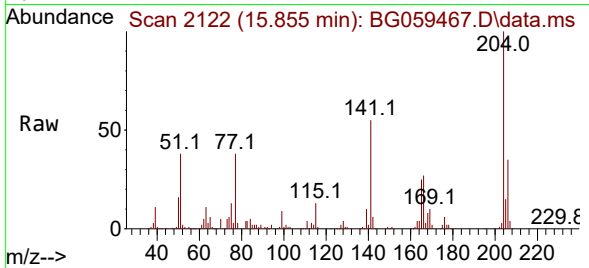
#62  
 4-Chlorophenyl-phenylether  
 Concen: 40.756 ng/ul  
 RT: 15.855 min Scan# 2122  
 Delta R.T. -0.003 min  
 Lab File: BG059467.D  
 Acq: 17 Oct 2023 21:02

Instrument :

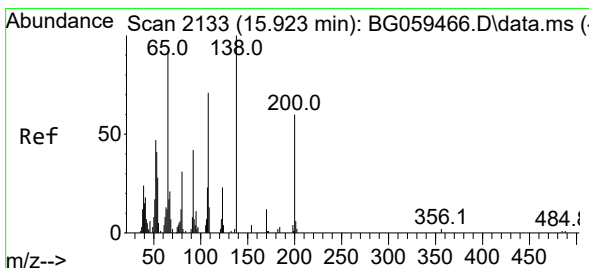
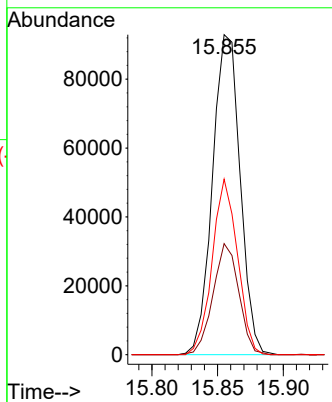
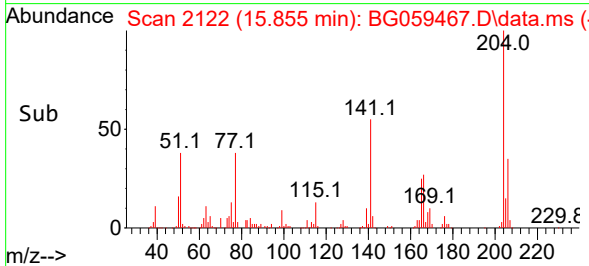
BNA\_G

ClientSampleId :

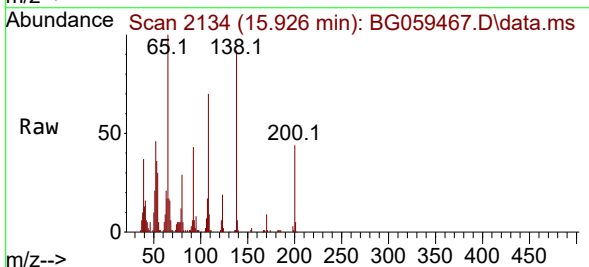
SSTD040416



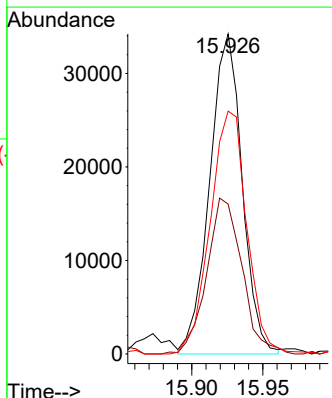
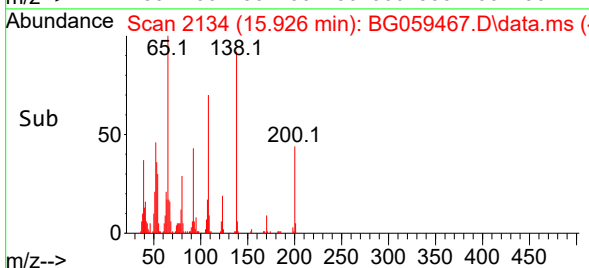
Tgt Ion:204 Resp: 136025  
 Ion Ratio Lower Upper  
 204 100  
 206 34.7 25.7 38.5  
 141 54.9 37.6 56.4

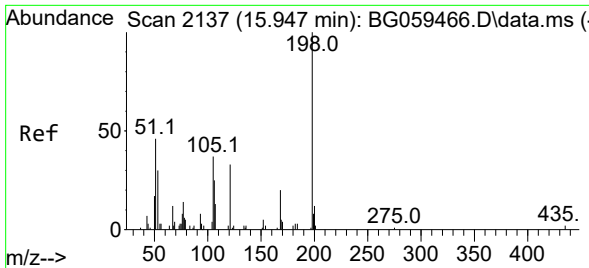


#63  
 4-Nitroaniline  
 Concen: 42.117 ng/ul  
 RT: 15.926 min Scan# 2134  
 Delta R.T. 0.002 min  
 Lab File: BG059467.D  
 Acq: 17 Oct 2023 21:02



Tgt Ion:138 Resp: 54339  
 Ion Ratio Lower Upper  
 138 100  
 92 46.9 33.3 49.9  
 108 75.9 55.4 83.2

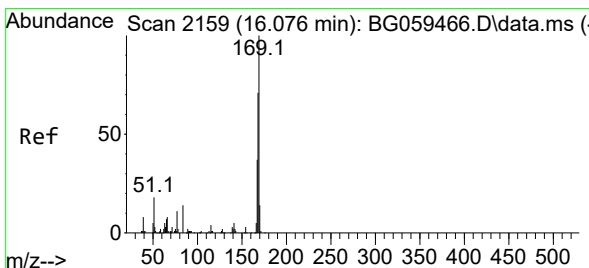
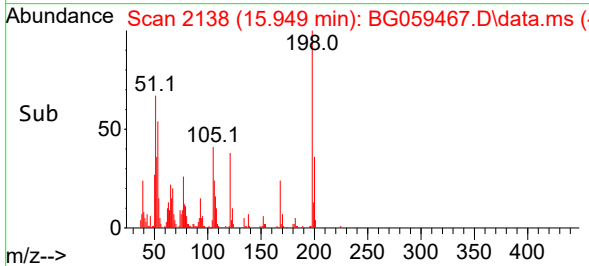
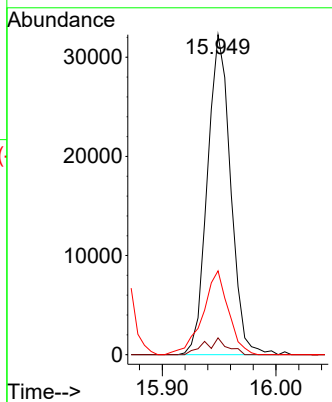
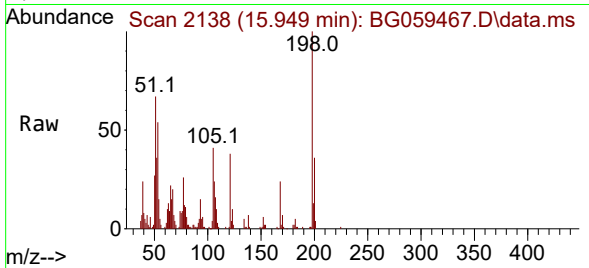




#66  
 4,6-Dinitro-2-methylphenol  
 Concen: 42.771 ng/ul  
 RT: 15.949 min Scan# 2138  
 Delta R.T. 0.002 min  
 Lab File: BG059467.D  
 Acq: 17 Oct 2023 21:02

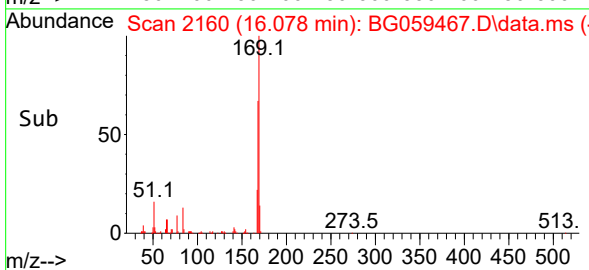
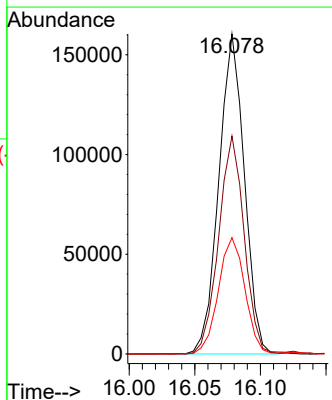
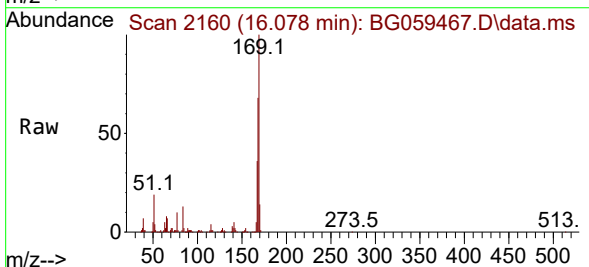
Instrument :  
 BNA\_G  
 ClientSampleId :  
 SSTD040416

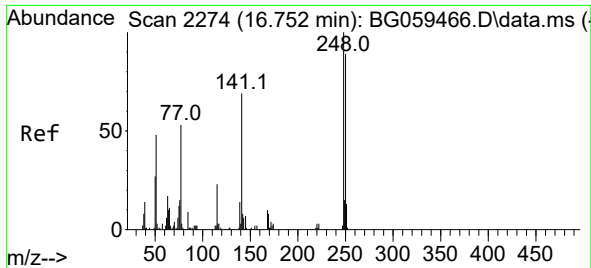
Tgt Ion:198 Resp: 45834  
 Ion Ratio Lower Upper  
 198 100  
 182 5.2 2.7 4.1#  
 77 26.2 13.0 19.6#



#67  
 N-Nitrosodiphenylamine  
 Concen: 43.961 ng/ul  
 RT: 16.078 min Scan# 2160  
 Delta R.T. 0.002 min  
 Lab File: BG059467.D  
 Acq: 17 Oct 2023 21:02

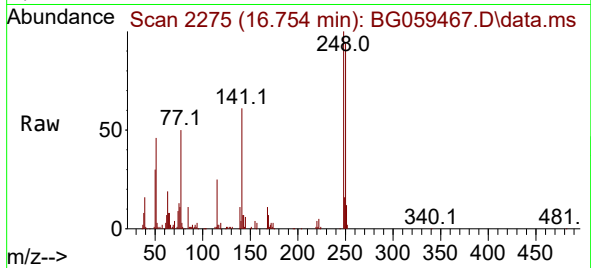
Tgt Ion:169 Resp: 216711  
 Ion Ratio Lower Upper  
 169 100  
 168 68.1 56.9 85.3  
 167 36.3 29.4 44.0



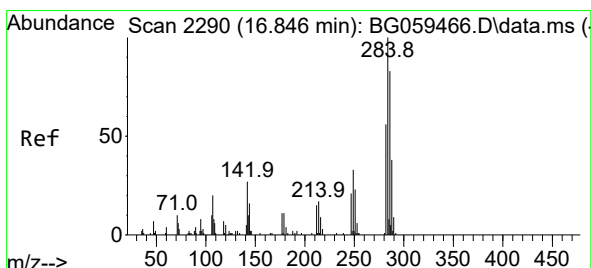
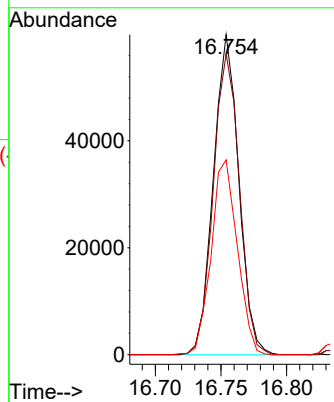
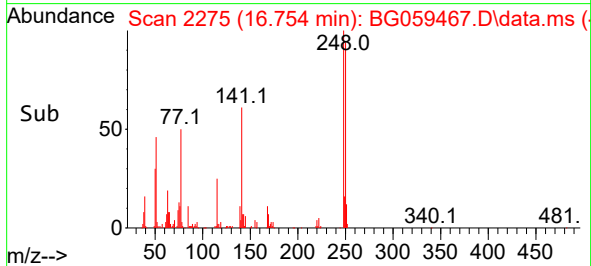


#68  
 4-Bromophenyl-phenylether  
 Concen: 44.305 ng/ul  
 RT: 16.754 min Scan# 21  
 Delta R.T. 0.002 min  
 Lab File: BG059467.D  
 Acq: 17 Oct 2023 21:02

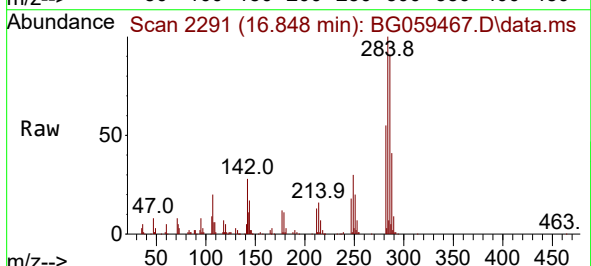
Instrument :  
 BNA\_G  
 ClientSampleId :  
 SSTD040416



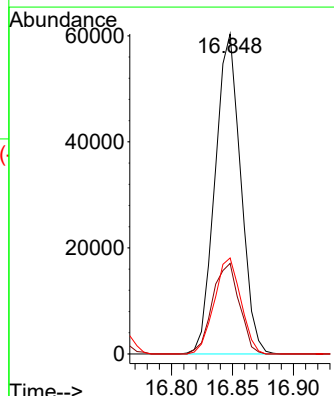
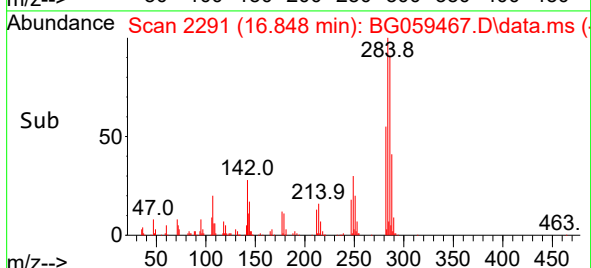
Tgt Ion:248 Resp: 80508  
 Ion Ratio Lower Upper  
 248 100  
 250 94.0 71.8 107.8  
 141 60.9 54.8 82.2

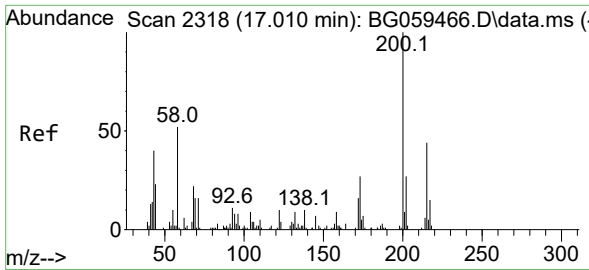


#69  
 Hexachlorobenzene  
 Concen: 42.548 ng/ul  
 RT: 16.848 min Scan# 2291  
 Delta R.T. 0.002 min  
 Lab File: BG059467.D  
 Acq: 17 Oct 2023 21:02



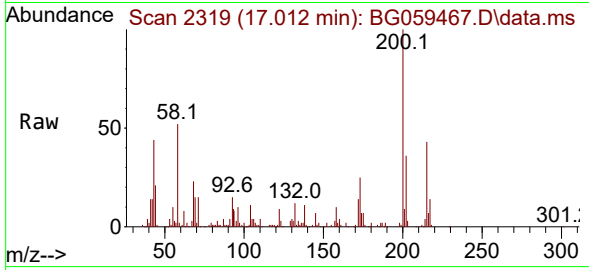
Tgt Ion:284 Resp: 88352  
 Ion Ratio Lower Upper  
 284 100  
 142 28.3 21.4 32.0  
 249 32.9 28.1 42.1



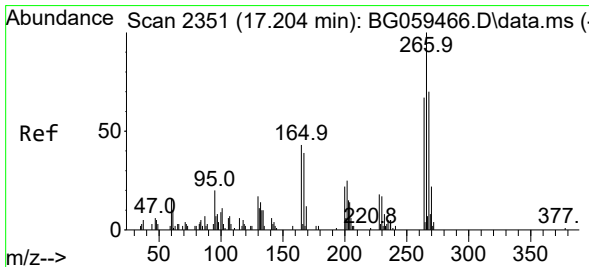
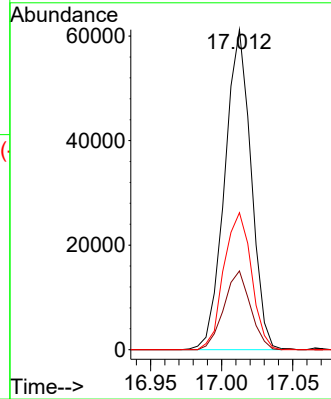
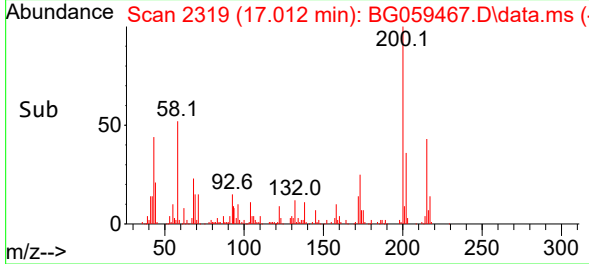


#70  
 Atrazine  
 Concen: 41.098 ng/ul  
 RT: 17.012 min Scan# 21  
 Delta R.T. 0.002 min  
 Lab File: BG059467.D  
 Acq: 17 Oct 2023 21:02

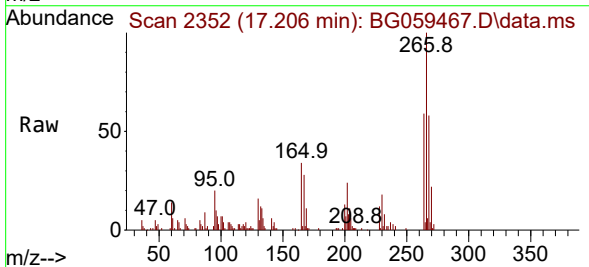
Instrument :  
 BNA\_G  
 ClientSampleId :  
 SSTD040416



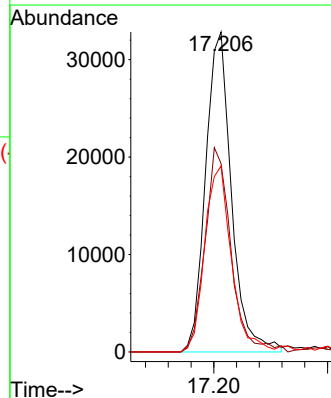
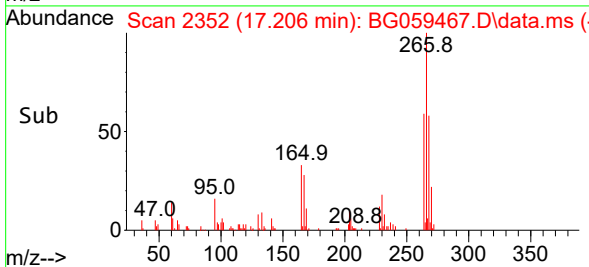
Tgt Ion:200 Resp: 78875  
 Ion Ratio Lower Upper  
 200 100  
 173 24.6 21.7 32.5  
 215 42.8 34.8 52.2

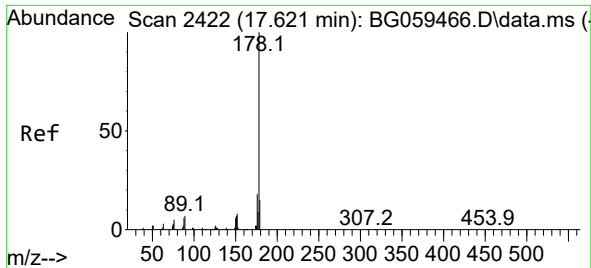


#71  
 Pentachlorophenol  
 Concen: 43.926 ng/ul  
 RT: 17.206 min Scan# 2352  
 Delta R.T. 0.002 min  
 Lab File: BG059467.D  
 Acq: 17 Oct 2023 21:02



Tgt Ion:266 Resp: 51895  
 Ion Ratio Lower Upper  
 266 100  
 264 58.9 56.9 85.3  
 268 58.1 56.4 84.6

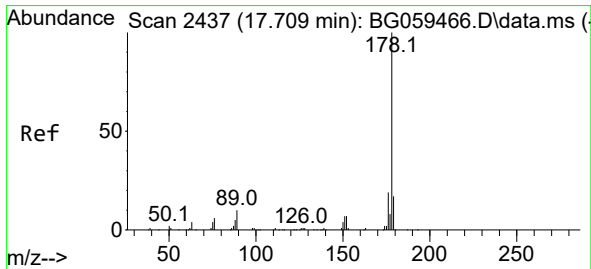
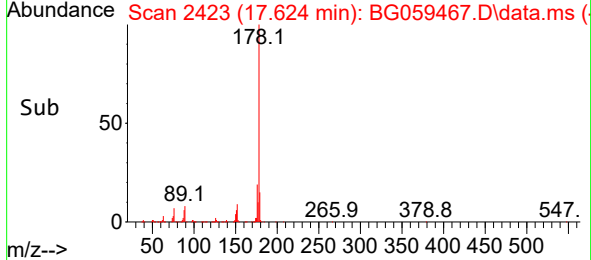
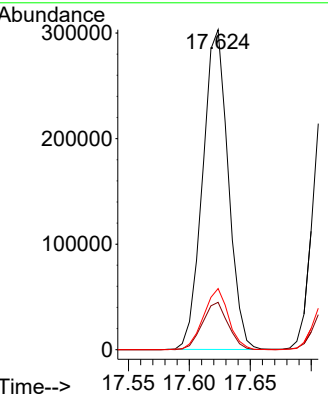
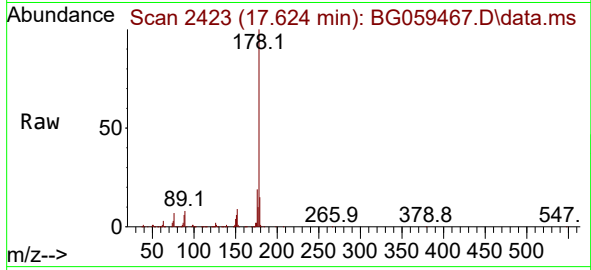




#72  
 Phenanthrene  
 Concen: 42.533 ng/u1  
 RT: 17.624 min Scan# 2422  
 Delta R.T. 0.002 min  
 Lab File: BG059467.D  
 Acq: 17 Oct 2023 21:02

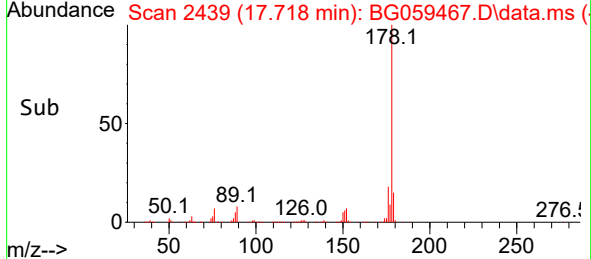
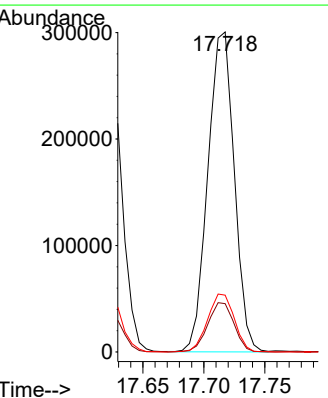
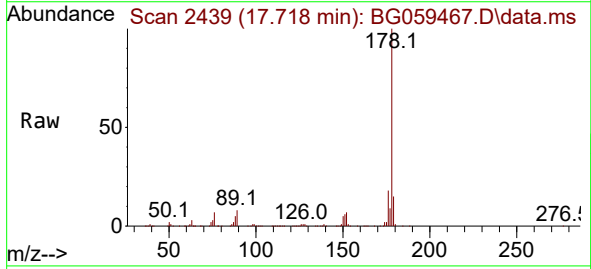
Instrument : BNA\_G  
 ClientSampleId : SSTD040416

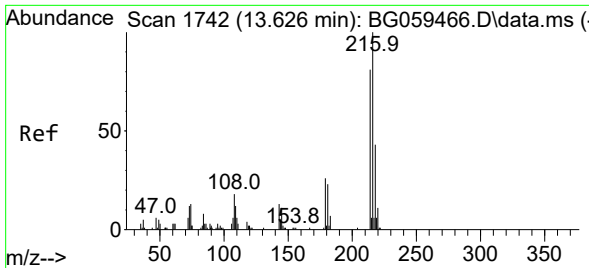
Tgt Ion	Resp	Lower	Upper
178	441876		
179	14.8	11.8	17.8
176	19.1	14.2	21.4



#74  
 Anthracene  
 Concen: 42.630 ng/u1  
 RT: 17.718 min Scan# 2439  
 Delta R.T. 0.008 min  
 Lab File: BG059467.D  
 Acq: 17 Oct 2023 21:02

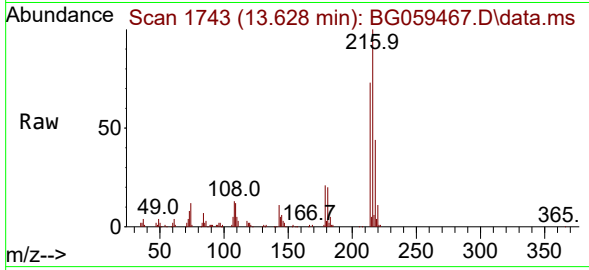
Tgt Ion	Resp	Lower	Upper
178	454108		
179	15.1	13.2	19.8
176	17.8	15.1	22.7



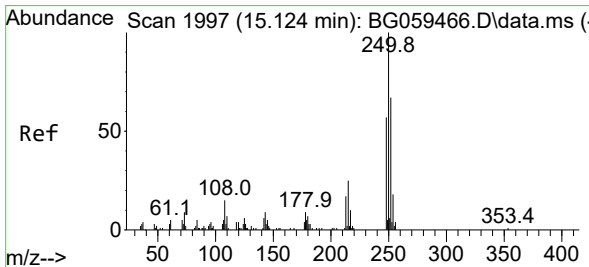
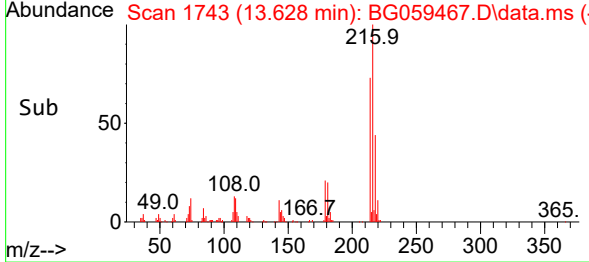
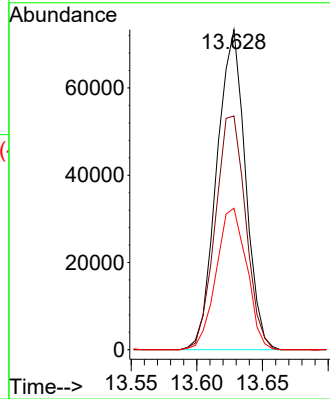


#75  
 1,2,3,4-Tetrachlorobenzene  
 Concen: 46.322 ng/uL  
 RT: 13.628 min Scan# 1743  
 Delta R.T. 0.002 min  
 Lab File: BG059467.D  
 Acq: 17 Oct 2023 21:02

Instrument :  
 BNA\_G  
 ClientSampleId :  
 SSTD040416

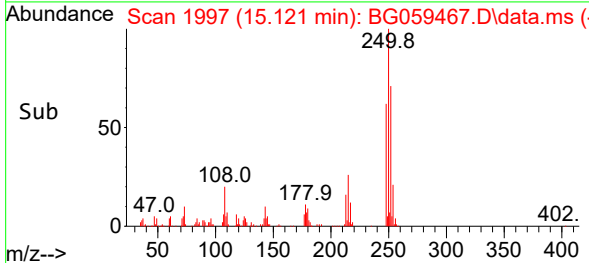
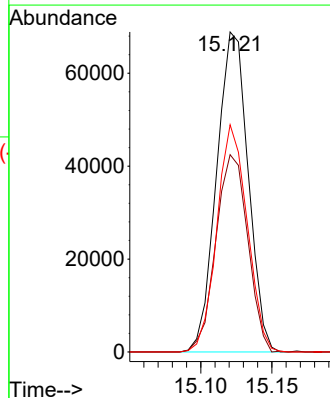
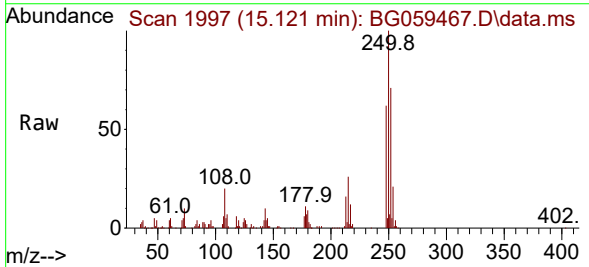


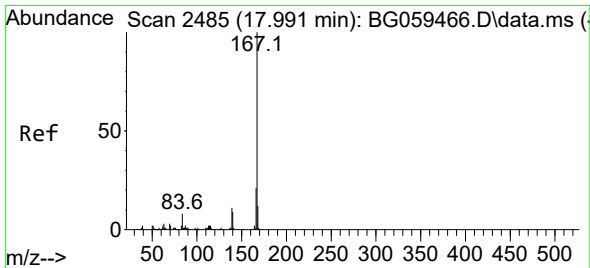
Tgt Ion: 216 Resp: 111460  
 Ion Ratio Lower Upper  
 216 100  
 214 73.1 64.5 96.7  
 218 44.2 34.7 52.1



#76  
 Pentachlorobenzene  
 Concen: 45.408 ng/uL  
 RT: 15.121 min Scan# 1997  
 Delta R.T. -0.003 min  
 Lab File: BG059467.D  
 Acq: 17 Oct 2023 21:02

Tgt Ion: 250 Resp: 106480  
 Ion Ratio Lower Upper  
 250 100  
 248 61.7 46.5 69.7  
 252 71.0 53.3 79.9

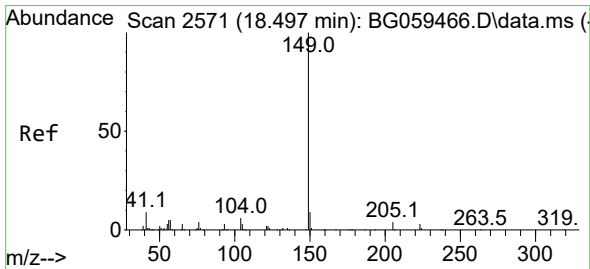
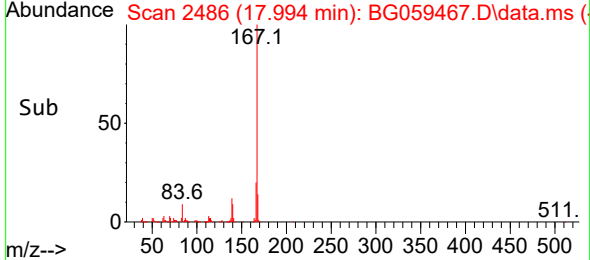
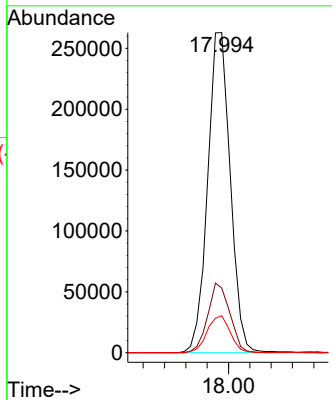
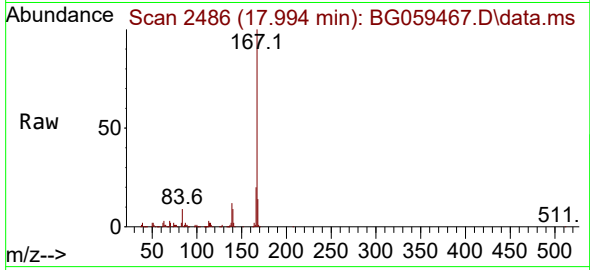




#77  
 Carbazole  
 Concen: 42.162 ng/uI  
 RT: 17.994 min Scan# 2486  
 Delta R.T. 0.002 min  
 Lab File: BG059467.D  
 Acq: 17 Oct 2023 21:02

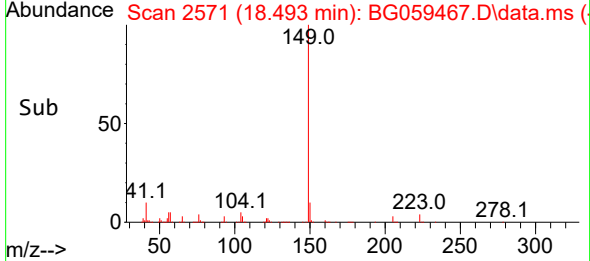
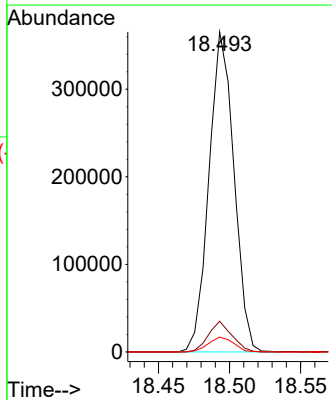
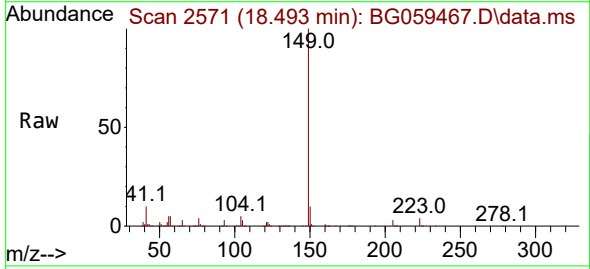
Instrument : BNA\_G  
 ClientSampleId : SSTD040416

Tgt Ion	Resp	Lower	Upper
167	388383		
166	20.2	17.0	25.4
139	11.6	8.6	12.8

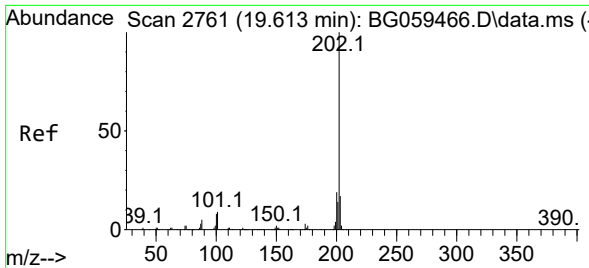


#78  
 Di-n-butylphthalate  
 Concen: 43.009 ng/uI  
 RT: 18.493 min Scan# 2571  
 Delta R.T. -0.003 min  
 Lab File: BG059467.D  
 Acq: 17 Oct 2023 21:02

Tgt Ion	Resp	Lower	Upper
149	446628		
150	9.6	6.9	10.3
104	4.6	4.6	7.0





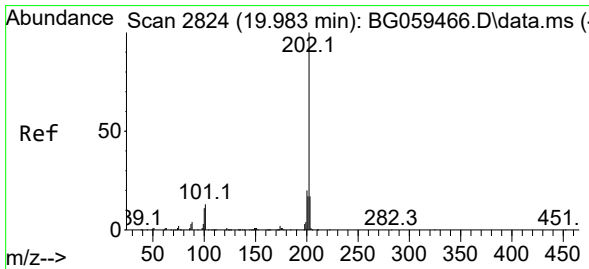
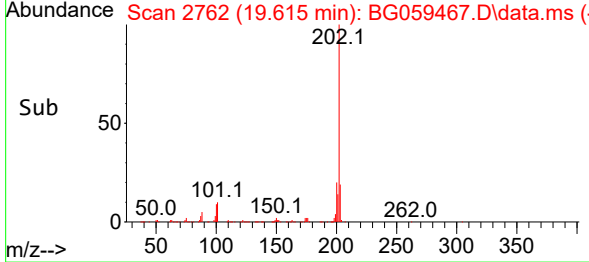
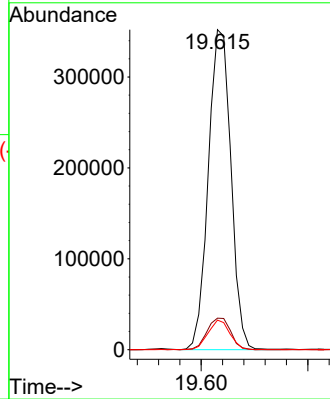
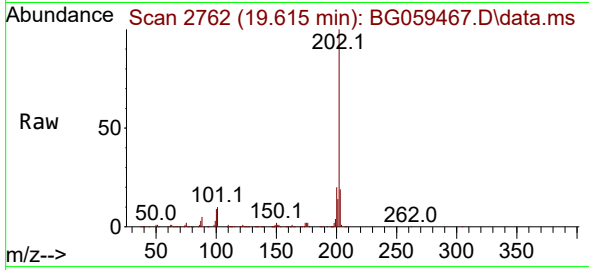


#80  
 Fluoranthene  
 Concen: 46.024 ng/u1  
 RT: 19.615 min Scan# 2762  
 Delta R.T. 0.002 min  
 Lab File: BG059467.D  
 Acq: 17 Oct 2023 21:02

Instrument : BNA\_G  
 ClientSampleId : SSTD040416

Tgt Ion:202 Resp: 517863

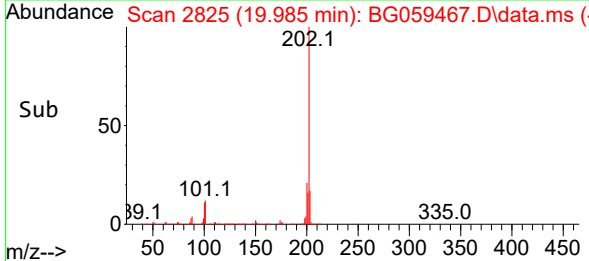
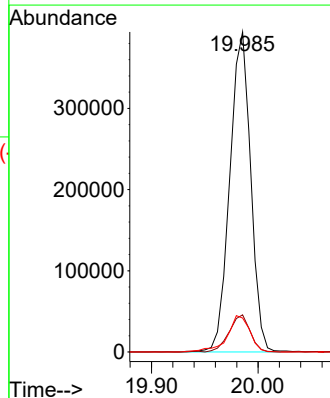
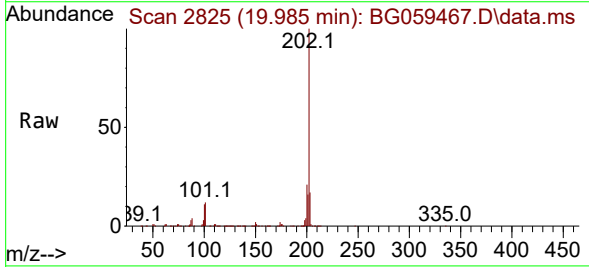
Ion	Ratio	Lower	Upper
202	100		
101	9.8	7.4	11.0
100	9.3	6.6	10.0

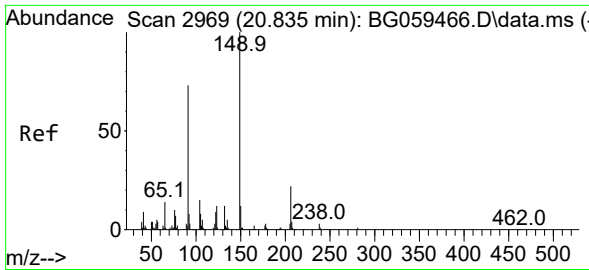


#82  
 Pyrene  
 Concen: 44.444 ng/u1  
 RT: 19.985 min Scan# 2825  
 Delta R.T. 0.002 min  
 Lab File: BG059467.D  
 Acq: 17 Oct 2023 21:02

Tgt Ion:202 Resp: 537046

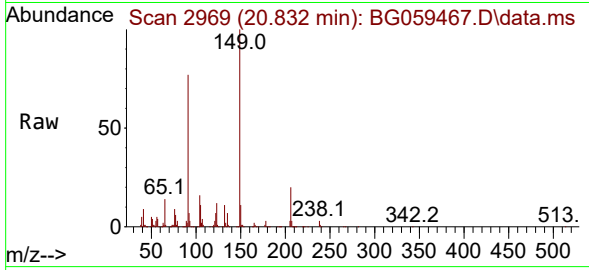
Ion	Ratio	Lower	Upper
202	100		
101	11.6	10.5	15.7
100	10.6	9.2	13.8



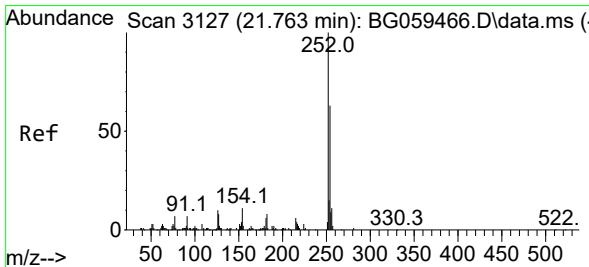
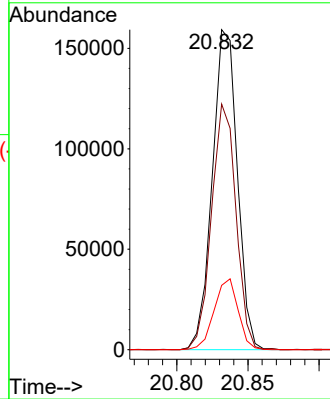
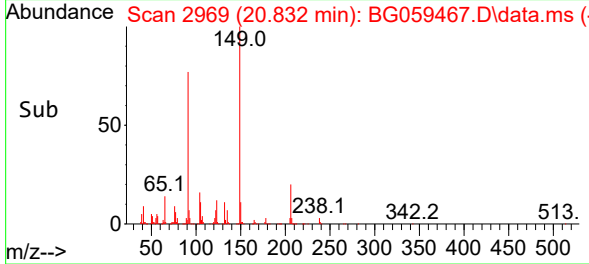


#83  
 Butylbenzylphthalate  
 Concen: 47.931 ng/ul  
 RT: 20.832 min Scan# 2969  
 Delta R.T. -0.003 min  
 Lab File: BG059467.D  
 Acq: 17 Oct 2023 21:02

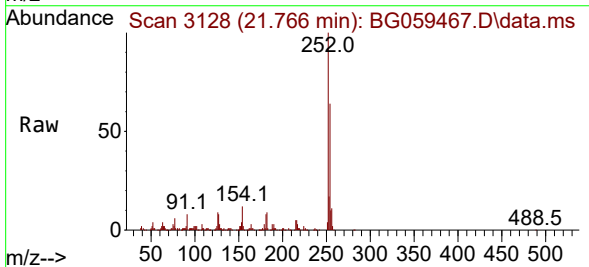
Instrument :  
 BNA\_G  
 ClientSampleId :  
 SSTD040416



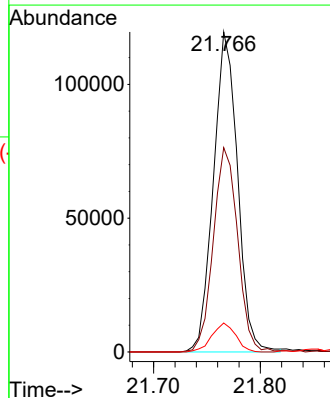
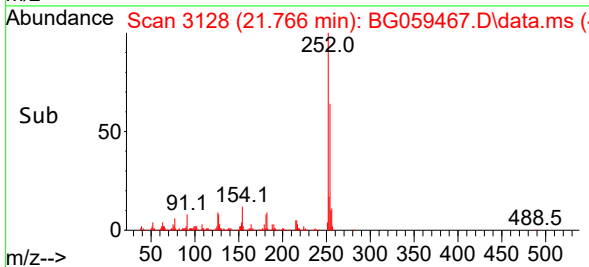
Tgt Ion:149 Resp: 195146  
 Ion Ratio Lower Upper  
 149 100  
 91 76.8 58.4 87.6  
 206 20.1 17.8 26.8

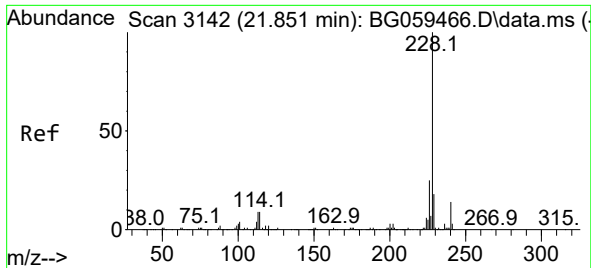


#84  
 3,3'-Dichlorobenzidine  
 Concen: 46.783 ng/ul  
 RT: 21.766 min Scan# 3128  
 Delta R.T. 0.002 min  
 Lab File: BG059467.D  
 Acq: 17 Oct 2023 21:02



Tgt Ion:252 Resp: 187627  
 Ion Ratio Lower Upper  
 252 100  
 254 63.9 50.6 75.8  
 126 9.0 7.8 11.8





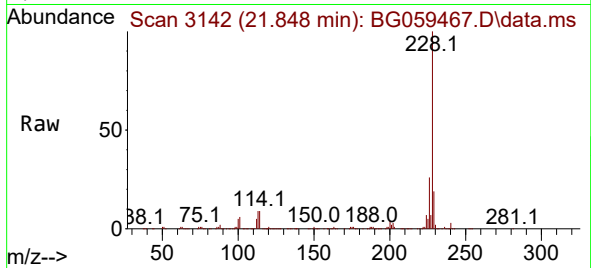
#85  
 Benzo(a)anthracene  
 Concen: 43.663 ng/uI  
 RT: 21.848 min Scan# 3114  
 Delta R.T. -0.003 min  
 Lab File: BG059467.D  
 Acq: 17 Oct 2023 21:02

Instrument :

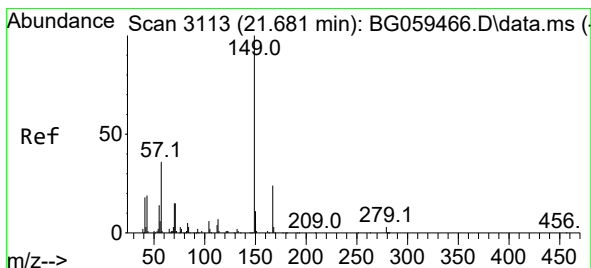
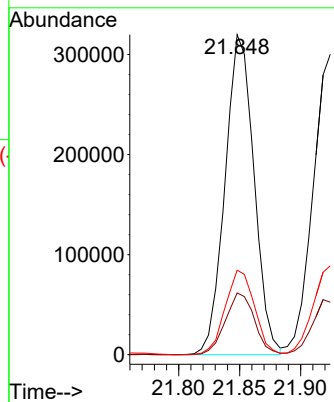
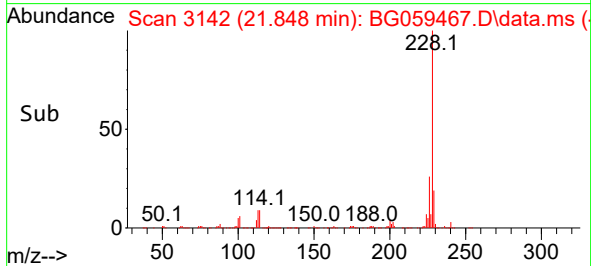
BNA\_G

ClientSampleId :

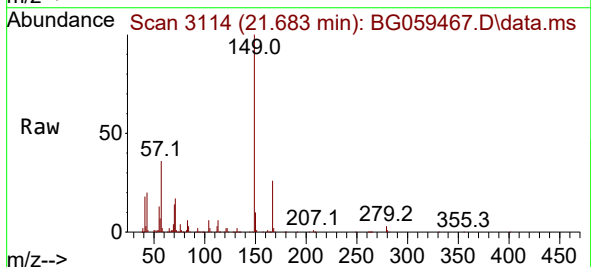
SSTD040416



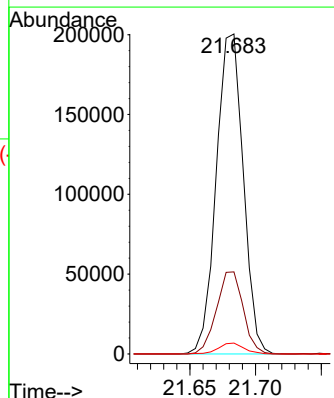
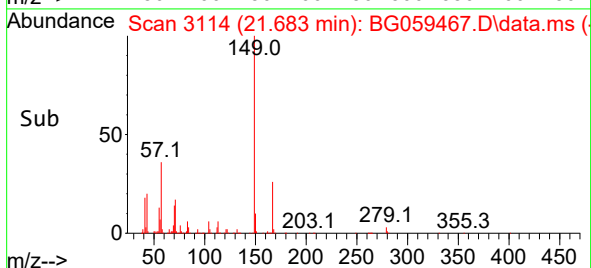
Tgt Ion:228 Resp: 529038  
 Ion Ratio Lower Upper  
 228 100  
 229 19.3 14.6 21.8  
 226 26.4 20.2 30.2

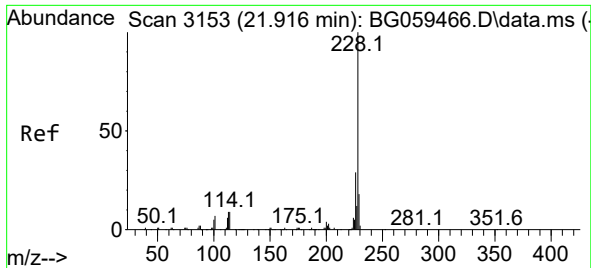


#86  
 Bis(2-ethylhexyl)phthalate  
 Concen: 48.213 ng/uI  
 RT: 21.683 min Scan# 3114  
 Delta R.T. 0.002 min  
 Lab File: BG059467.D  
 Acq: 17 Oct 2023 21:02



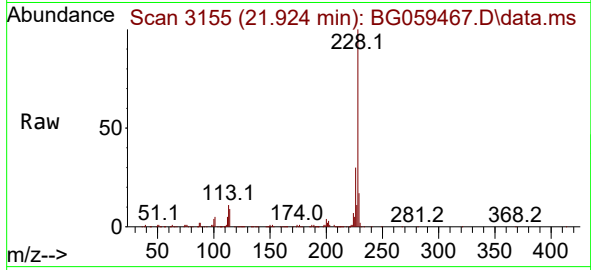
Tgt Ion:149 Resp: 286127  
 Ion Ratio Lower Upper  
 149 100  
 167 25.7 18.9 28.3  
 279 3.4 2.6 4.0



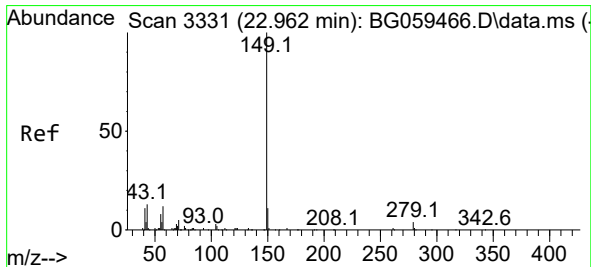
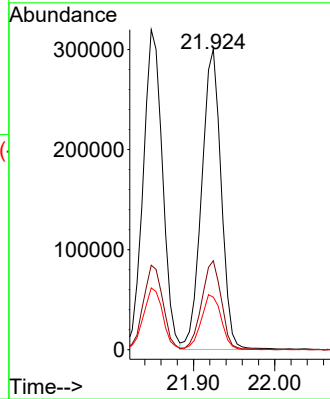
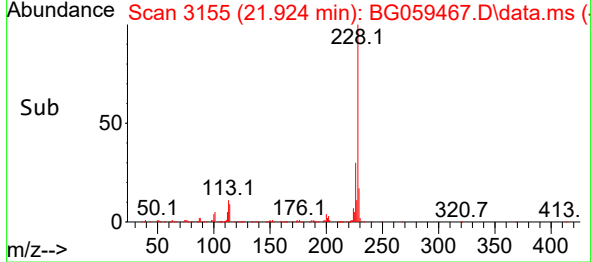


#87  
 Chrysene  
 Concen: 43.772 ng/ul  
 RT: 21.924 min Scan# 3155  
 Delta R.T. 0.008 min  
 Lab File: BG059467.D  
 Acq: 17 Oct 2023 21:02

Instrument : BNA\_G  
 ClientSampleId : SSTD040416

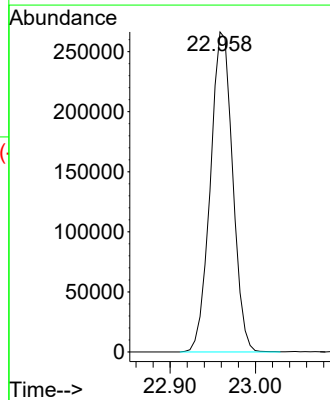
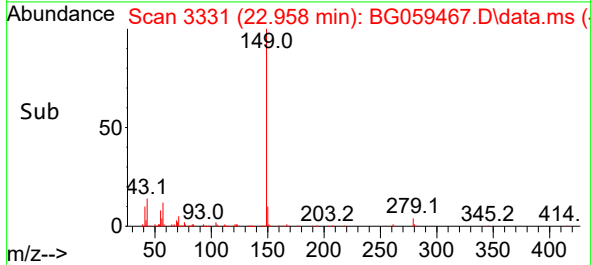
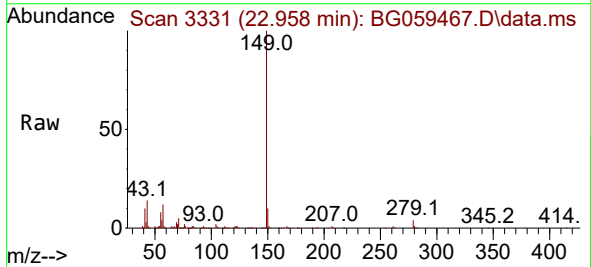


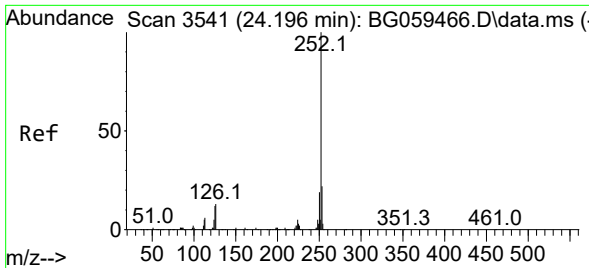
Tgt Ion:228 Resp: 500326  
 Ion Ratio Lower Upper  
 228 100  
 226 29.6 23.4 35.0  
 229 17.5 14.3 21.5



#89  
 Di-n-octyl phthalate  
 Concen: 45.050 ng/ul  
 RT: 22.958 min Scan# 3331  
 Delta R.T. -0.003 min  
 Lab File: BG059467.D  
 Acq: 17 Oct 2023 21:02

Tgt Ion:149 Resp: 484517



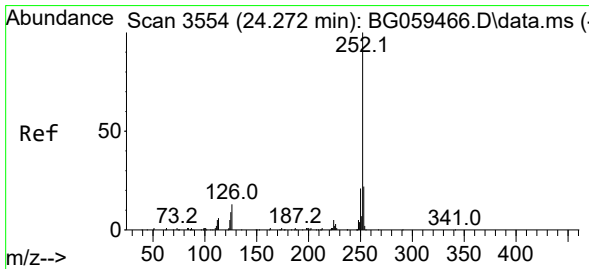
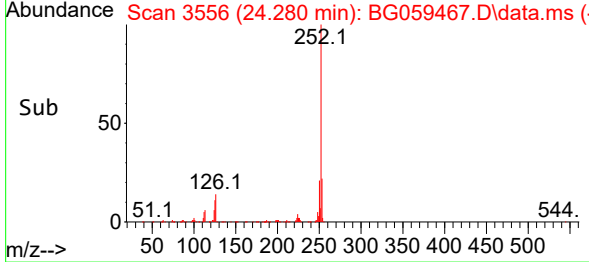
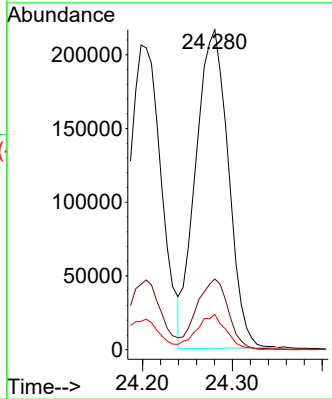
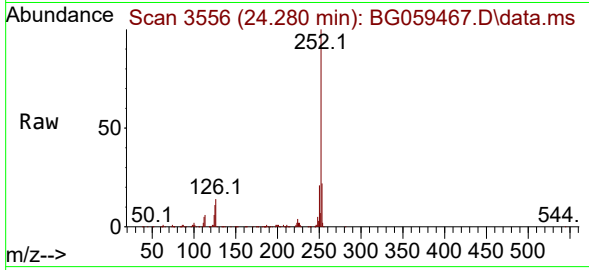


#90  
 Benzo(b)fluoranthene  
 Concen: 43.857 ng/ul  
 RT: 24.280 min Scan# 3556  
 Delta R.T. 0.085 min  
 Lab File: BG059467.D  
 Acq: 17 Oct 2023 21:02

Instrument : BNA\_G  
 ClientSampleId : SSTD040416

Tgt Ion:252 Resp: 544558

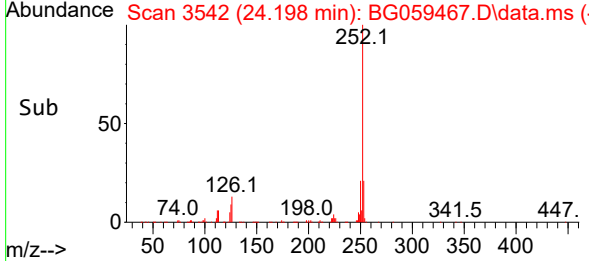
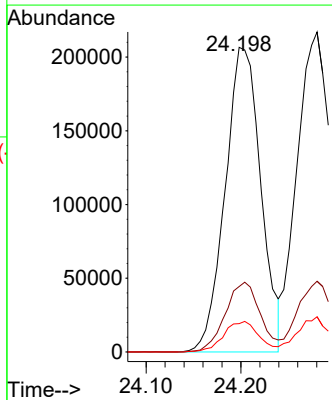
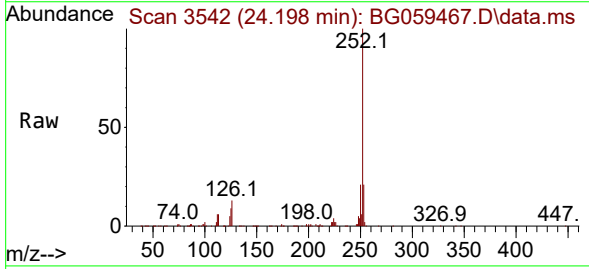
Ion	Ratio	Lower	Upper
252	100		
253	22.1	17.2	25.8
125	11.0	9.8	14.6

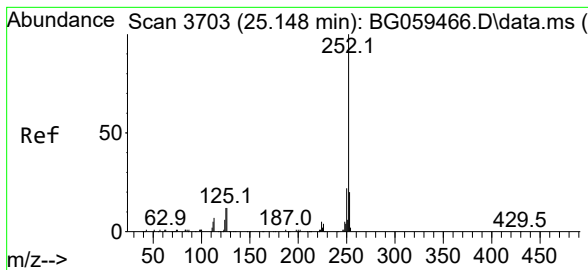


#91  
 Benzo(k)fluoranthene  
 Concen: 42.802 ng/ul  
 RT: 24.198 min Scan# 3542  
 Delta R.T. -0.074 min  
 Lab File: BG059467.D  
 Acq: 17 Oct 2023 21:02

Tgt Ion:252 Resp: 540325

Ion	Ratio	Lower	Upper
252	100		
253	21.5	17.6	26.4
125	9.3	7.2	10.8

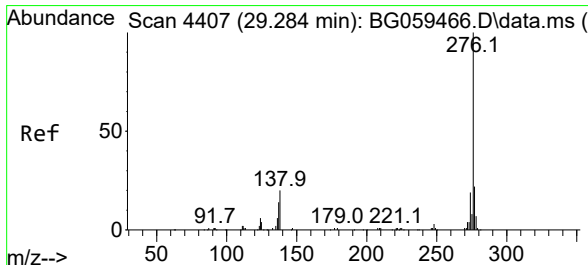
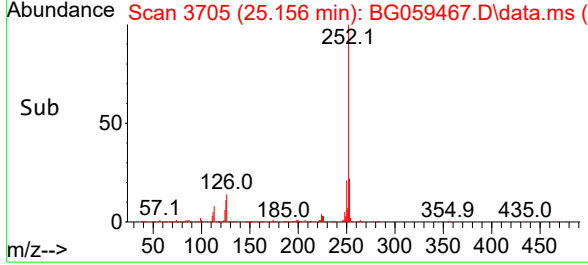
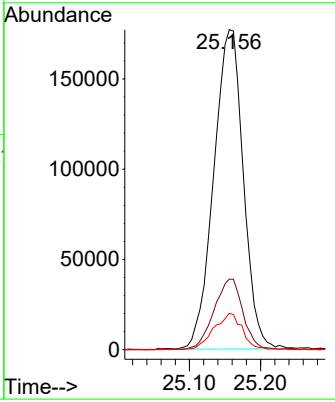
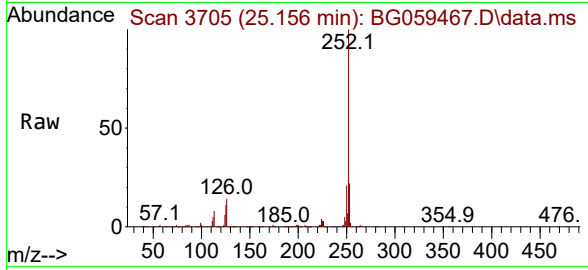




#93  
 Benzo(a)pyrene  
 Concen: 42.414 ng/u1  
 RT: 25.156 min Scan# 31  
 Delta R.T. 0.008 min  
 Lab File: BG059467.D  
 Acq: 17 Oct 2023 21:02

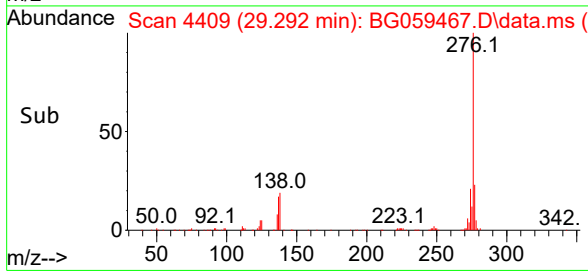
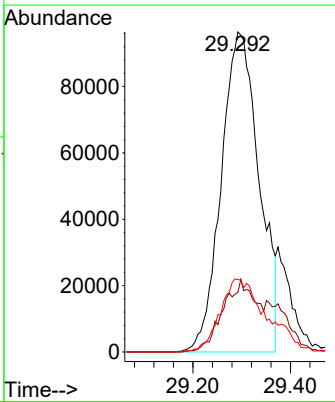
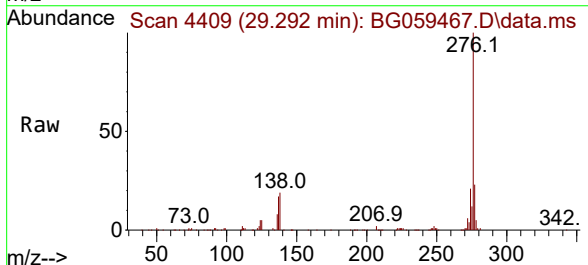
Instrument : BNA\_G  
 ClientSampleId : SSTD040416

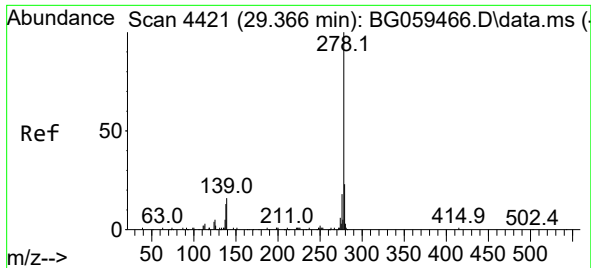
Tgt Ion	Resp	Lower	Upper
252	100		
253	22.1	16.2	24.4
125	11.3	9.6	14.4



#94  
 Indeno(1,2,3-cd)pyrene  
 Concen: 38.465 ng/u1  
 RT: 29.292 min Scan# 4409  
 Delta R.T. 0.008 min  
 Lab File: BG059467.D  
 Acq: 17 Oct 2023 21:02

Tgt Ion	Resp	Lower	Upper
276	100		
138	18.6	16.1	24.1
277	22.7	17.4	26.2

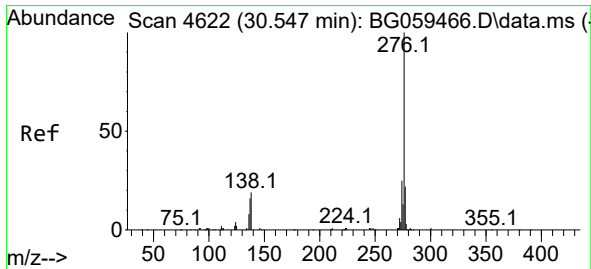
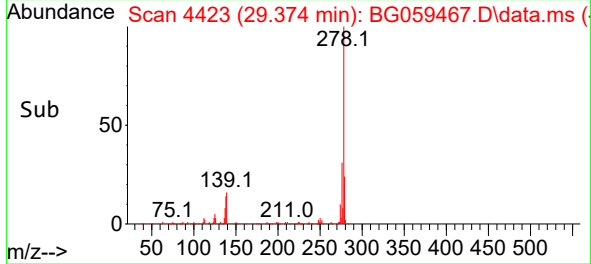
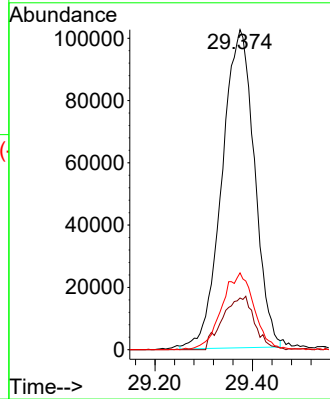
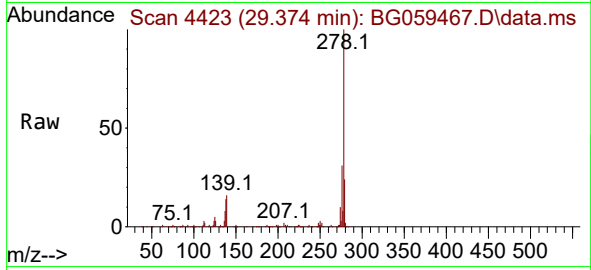




#95  
 Dibenzo(a,h)anthracene  
 Concen: 42.004 ng/ul  
 RT: 29.374 min Scan# 4423  
 Delta R.T. 0.008 min  
 Lab File: BG059467.D  
 Acq: 17 Oct 2023 21:02

Instrument :  
 BNA\_G  
 ClientSampleId :  
 SSTD040416

Tgt Ion:278 Resp: 472706  
 Ion Ratio Lower Upper  
 278 100  
 139 16.1 12.6 18.8  
 279 24.0 18.6 27.8



#96  
 Benzo(g,h,i)perylene  
 Concen: 43.056 ng/ul  
 RT: 30.561 min Scan# 4625  
 Delta R.T. 0.014 min  
 Lab File: BG059467.D  
 Acq: 17 Oct 2023 21:02

Tgt Ion:276 Resp: 475933  
 Ion Ratio Lower Upper  
 276 100  
 138 23.5 15.1 22.7#  
 277 22.7 17.4 26.2

