

Data Path : Z:\SVOASRV\HPCHEM1\BNA G\DATA\BG102220\  
 Data File : BG047033.D  
 Acq On : 22 Oct 2020 15:44  
 Operator : CG/JU  
 Sample : L4483-05  
 Misc :  
 ALS Vial : 7 Sample Multiplier: 1

Instrument :  
 BNA\_G  
 ClientSampled :  
 C0FH3

Integration Parameters: LSCINT.P

Integrator: RTE  
 Smoothing : OFF Filtering: 5  
 Sampling : 1 Min Area: 0.1 % of largest Peak  
 Start Thrs: 0.2 Max Peaks: 100  
 Stop Thrs : 0 Peak Location: TOP

If leading or trailing edge < 100 prefer < Baseline drop else tangent >  
 Peak separation: 5

Method : Z:\SVOASRV\HPCHEM1\BNA\_G\METHODS\SOM-EPA-BG102220MA.M  
 Title : SVOA CALIBRATION

Signal : TIC

peak #	R.T. min	first scan	max scan	last scan	PK TY	peak height	corr. area	corr. % max.	% of total
1	5.446	338	359	363	rBV2	27947389	125506889	90.38%	25.585%
2	7.221	654	661	670	rBV2	72545	172864	0.12%	0.035%
3	7.397	683	691	700	rBV2	172460	368046	0.27%	0.075%
4	7.603	718	726	739	rBV2	230461	487191	0.35%	0.099%
5	7.979	777	790	801	rBV	7198675	19626366	14.13%	4.001%
6	8.178	801	824	828	rBV	29385420	111689049	80.43%	22.768%
7	8.525	857	883	887	rBV	30669126	138871260	100.00%	28.309%
8	8.766	917	924	931	rBV2	209672	340671	0.25%	0.069%
9	9.230	996	1003	1006	rBV	307125	544527	0.39%	0.111%
10	9.277	1006	1011	1019	rVB	1017649	1778693	1.28%	0.363%
11	9.571	1054	1061	1070	rVB	225562	387946	0.28%	0.079%
12	9.882	1109	1114	1120	rVV	126333	245673	0.18%	0.050%
13	9.953	1120	1126	1134	rVV	280900	532315	0.38%	0.109%
14	10.493	1211	1218	1226	rBV	361963	672808	0.48%	0.137%
15	10.781	1251	1267	1273	rBV	19778787	52637750	37.90%	10.730%
16	10.893	1280	1286	1292	rBV	276359	438559	0.32%	0.089%
17	11.281	1341	1352	1359	rBV	7441669	14327272	10.32%	2.921%
18	11.475	1375	1385	1395	rBV	652593	1172579	0.84%	0.239%
19	11.686	1410	1421	1428	rBV	159440	298346	0.21%	0.061%
20	12.891	1610	1626	1633	rBV	788826	1514748	1.09%	0.309%
21	13.496	1720	1729	1738	rBV	2436079	3845554	2.77%	0.784%
22	14.089	1822	1830	1835	rBV	747071	1112744	0.80%	0.227%
23	14.136	1835	1838	1848	rVB	93694	146593	0.11%	0.030%
24	14.383	1873	1880	1888	rBV	779798	1207112	0.87%	0.246%
25	14.688	1926	1932	1941	rVB	410737	645730	0.46%	0.132%
26	15.681	2094	2101	2108	rBV	1000508	1511185	1.09%	0.308%
27	15.787	2113	2119	2130	rBV	400566	604022	0.43%	0.123%
28	17.432	2391	2399	2406	rBV	526294	791595	0.57%	0.161%
29	17.532	2409	2416	2426	rBV	1148889	1716012	1.24%	0.350%
30	18.801	2622	2632	2641	rBV	540495	826790	0.60%	0.169%
31	19.818	2798	2805	2812	rBV	1563871	2245337	1.62%	0.458%
32	21.339	3059	3064	3079	rBV3	64078	202465	0.15%	0.041%
33	21.698	3118	3125	3136	rBV2	574477	941270	0.68%	0.192%
34	24.712	3627	3638	3652	rBV	776539	2143365	1.54%	0.437%

Data Path : Z:\SVOASRV\HPCHEM1\BNA G\DATA\BG102220\  
Data File : BG047033.D  
Acq On : 22 Oct 2020 15:44  
Operator : CG/JU  
Sample : L4483-05  
Misc :  
ALS Vial : 7 Sample Multiplier: 1

Instrument :  
BNA\_G  
ClientSampleId :  
C0FH3

Integration Parameters: LSCINT.P  
Integrator: RTE  
Smoothing : OFF Filtering: 5  
Sampling : 1 Min Area: 0.1 % of largest Peak  
Start Thrs: 0.2 Max Peaks: 100  
Stop Thrs : 0 Peak Location: TOP

If leading or trailing edge < 100 prefer < Baseline drop else tangent >  
Peak separation: 5

Method : Z:\SVOASRV\HPCHEM1\BNA\_G\METHODS\SOM-EPA-BG102220MA.M  
Title : SVOA CALIBRATION

35	24.935	3665	3676	3689	rBV	340280	1001492	0.72%	0.204%
----	--------	------	------	------	-----	--------	---------	-------	--------

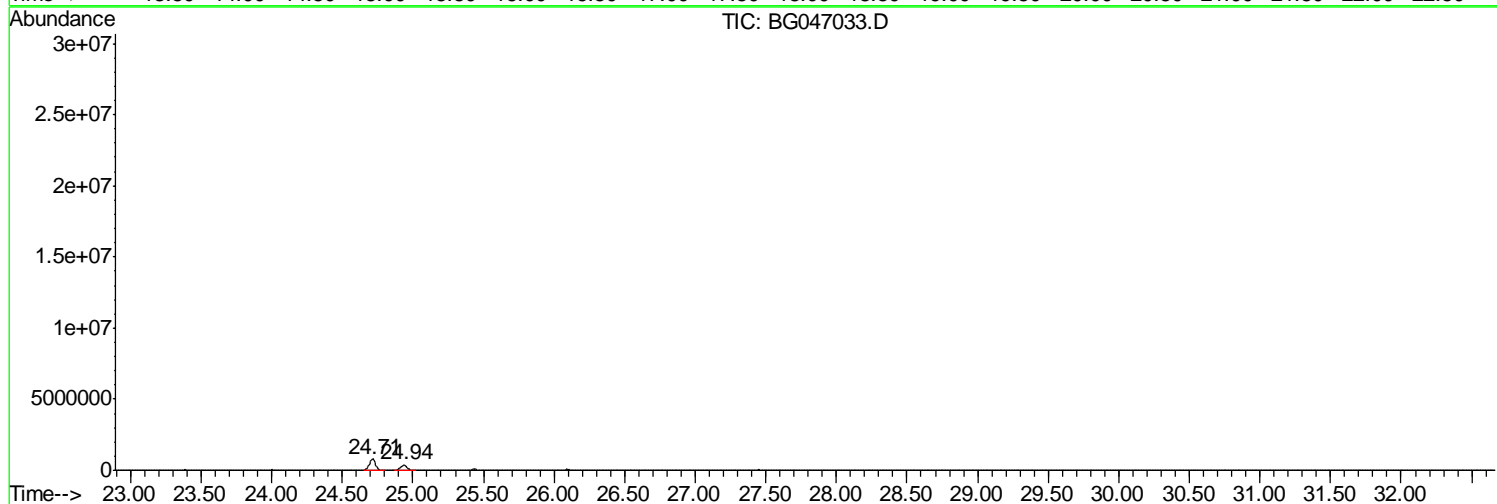
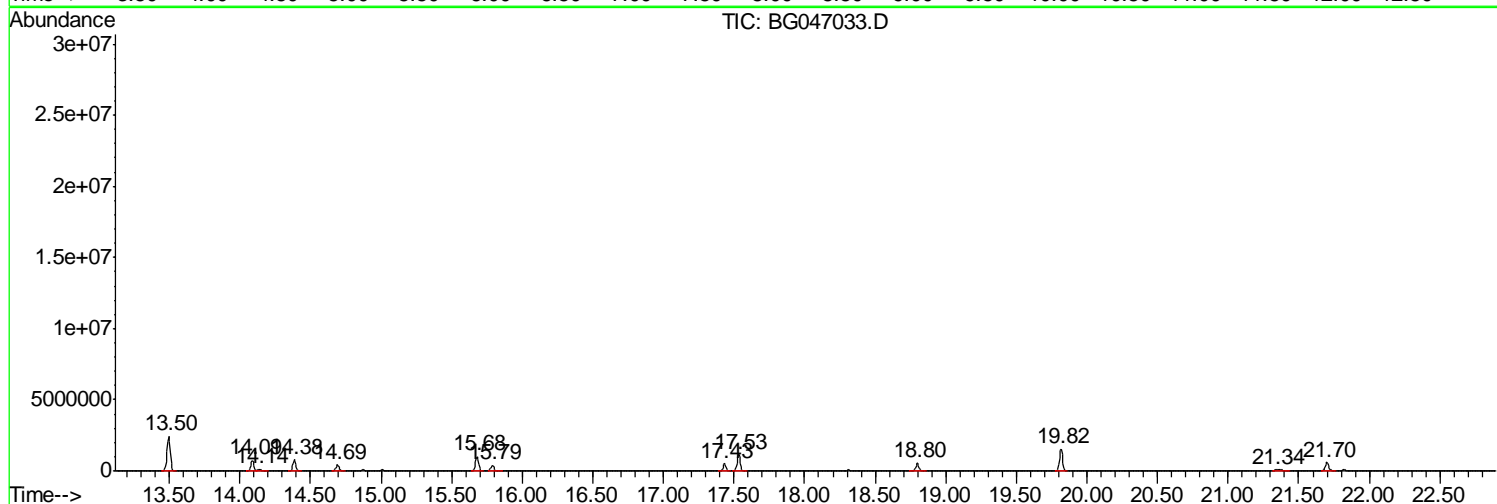
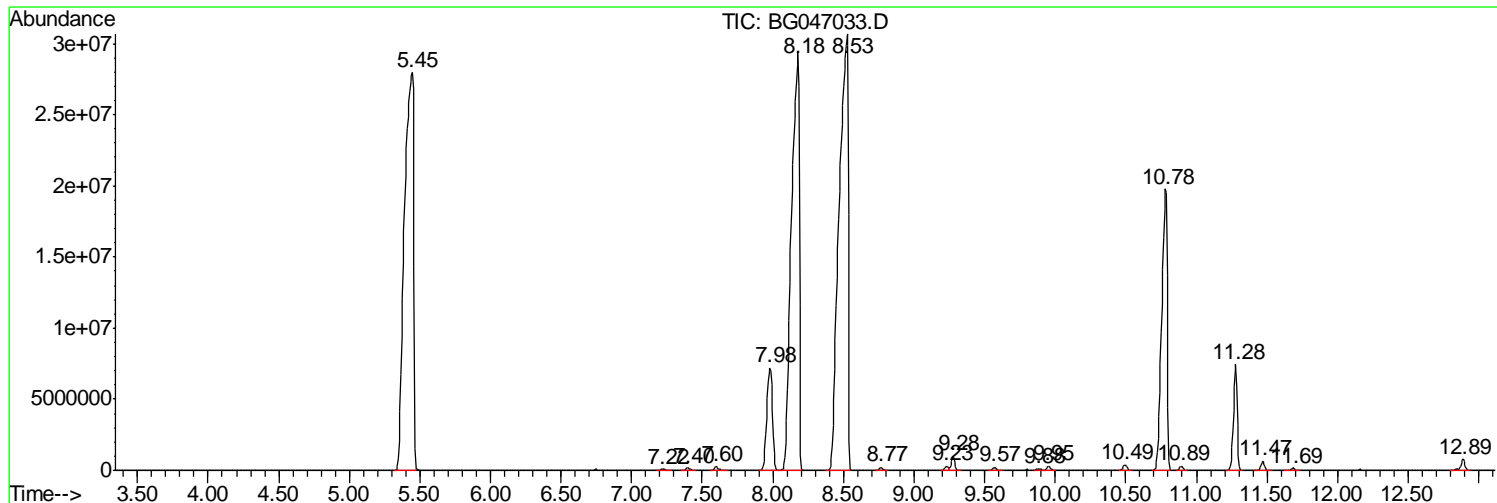
Sum of corrected areas: 490554818

Data Path : Z:\SVOASRV\HPCHEM1\BNA G\DATA\BG102220\  
 Data File : BG047033.D  
 Acq On : 22 Oct 2020 15:44  
 Operator : CG/JU  
 Sample : L4483-05  
 Misc :  
 ALS Vial : 7 Sample Multiplier: 1

Instrument :  
 BNA\_G  
 ClientSampleId :  
 C0FH3

Quant Method : Z:\SVOASRV\HPCHEM1\BNA\_G\METHODS\SOM-EPA-BG102220MA.M  
 Quant Title : SVOA CALIBRATION

TIC Library : C:\DATABASE\NIST11.L  
 TIC Integration Parameters: LSCINT.P



Data Path : Z:\SVOASRV\HPCHEM1\BNA G\DATA\BG102220\  
 Data File : BG047033.D  
 Acq On : 22 Oct 2020 15:44  
 Operator : CG/JU  
 Sample : L4483-05  
 Misc :  
 ALS Vial : 7 Sample Multiplier: 1

Instrument :  
 BNA\_G  
 ClientSampleID :  
 C0FH3

Quant Method : Z:\SVOASRV\HPCHEM1\BNA\_G\METHODS\SOM-EPA-BG102220MA.M  
 Quant Title : SVOA CALIBRATION

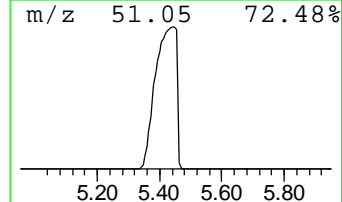
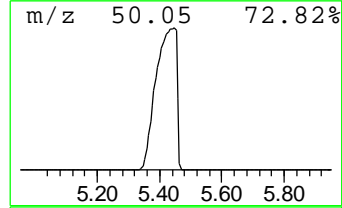
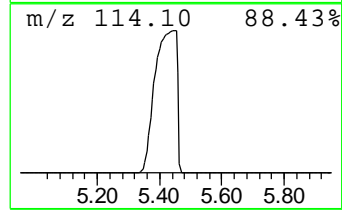
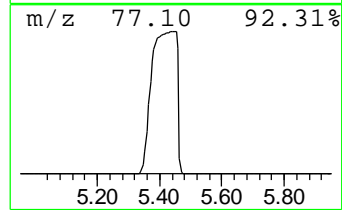
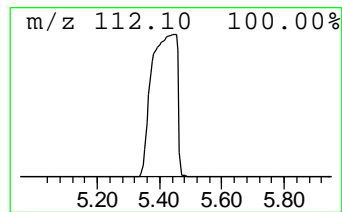
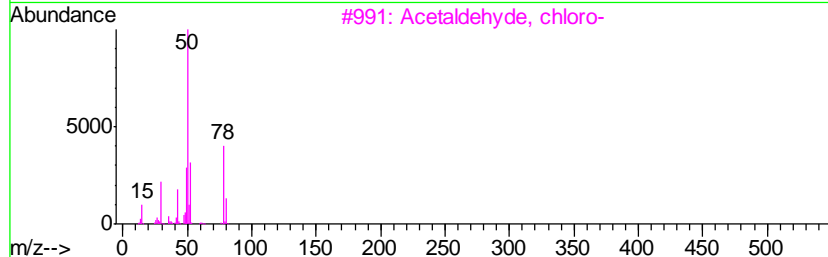
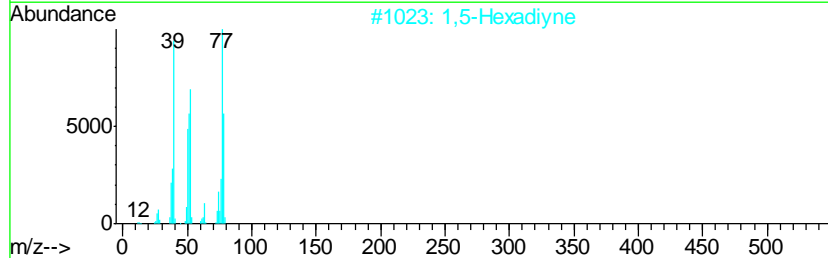
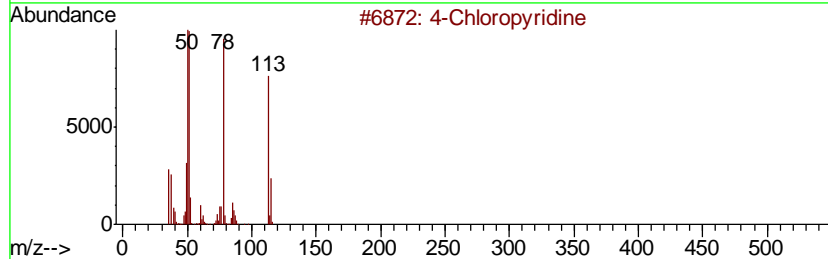
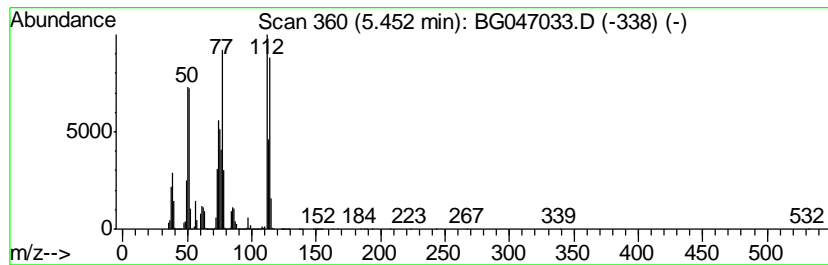
TIC Library : C:\DATABASE\NIST11.L  
 TIC Integration Parameters: LSCINT.P

\*\*\*\*\*  
 Peak Number 1 4-Chloropyridine Concentration Rank 5

R.T.	EstConc	Area	Relative to ISTD	R.T.
5.45	22.47 ng/ul	125507000	1,4-Dichlorobenzene-d4	8.12

Hit#	of	Tentative ID	MW	MolForm	CAS#	Qual
1	5	4-Chloropyridine	113	C5H4ClN	000626-61-9	86
2		1,5-Hexadiyne	78	C6H6	000628-16-0	37
3		Acetaldehyde, chloro-	78	C2H3ClO	000107-20-0	25
4		Acetaldehyde, chloro-	78	C2H3ClO	000107-20-0	22
5		Acetic acid, chloro-	94	C2H3ClO2	000079-11-8	12



Data Path : Z:\SVOASRV\HPCHEM1\BNA G\DATA\BG102220\  
 Data File : BG047033.D  
 Acq On : 22 Oct 2020 15:44  
 Operator : CG/JU  
 Sample : L4483-05  
 Misc :  
 ALS Vial : 7 Sample Multiplier: 1

Instrument :  
 BNA\_G  
 ClientSampleId :  
 C0FH3

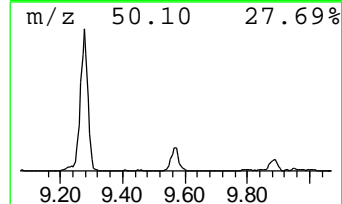
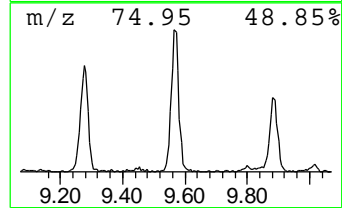
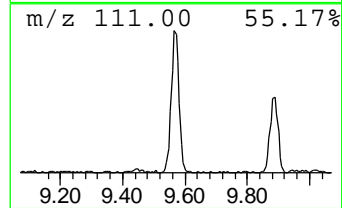
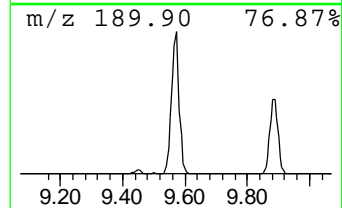
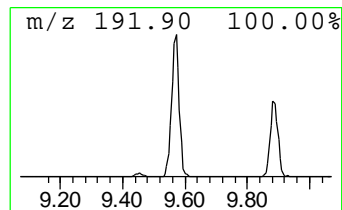
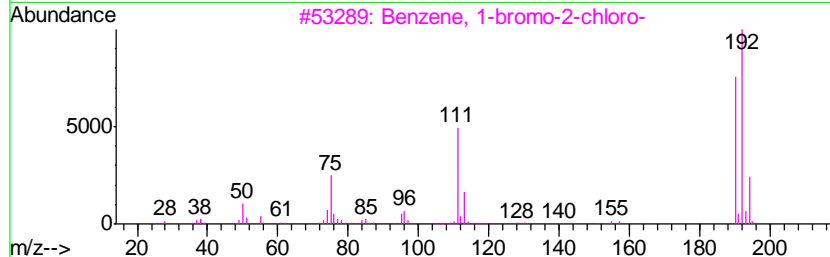
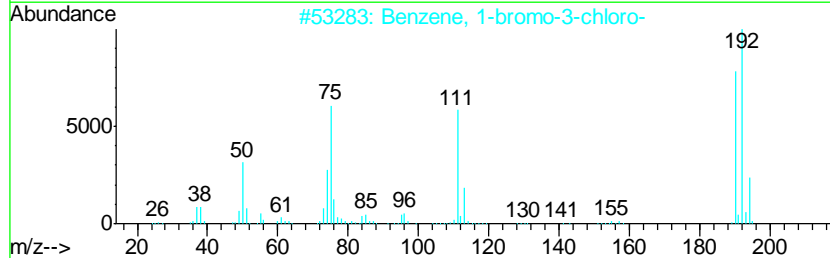
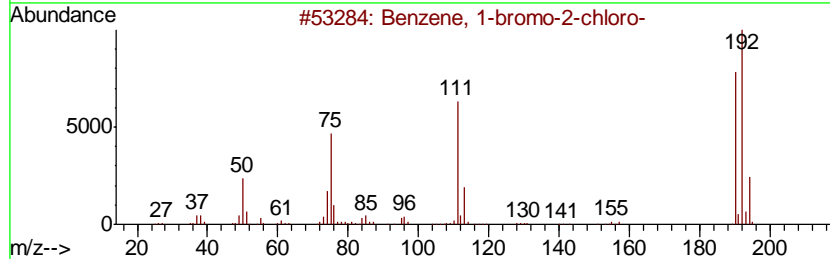
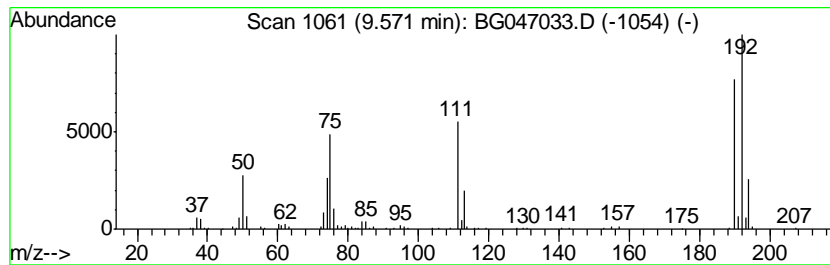
Quant Method : Z:\SVOASRV\HPCHEM1\BNA\_G\METHODS\SOM-EPA-BG102220MA.M  
 Quant Title : SVOA CALIBRATION

TIC Library : C:\DATABASE\NIST11.L  
 TIC Integration Parameters: LSCINT.P

\*\*\*\*\*  
 Peak Number 5 Benzene, 1-bromo-2-chloro- Concentration Rank 8

R.T.	EstConc	Area	Relative to ISTD	R.T.
9.57	17.69 ng/ul	387946	Napthalene-d8	10.89

Hit#	of	Tentative ID	MW	MolForm	CAS#	Qual
1	5	Benzene, 1-bromo-2-chloro-	190	C6H4BrCl	000694-80-4	95
2		Benzene, 1-bromo-3-chloro-	190	C6H4BrCl	000108-37-2	95
3		Benzene, 1-bromo-2-chloro-	190	C6H4BrCl	000694-80-4	94
4		Benzene, 1-bromo-2-chloro-	190	C6H4BrCl	000694-80-4	94
5		Benzene, 1-bromo-3-chloro-	190	C6H4BrCl	000108-37-2	94



Data Path : Z:\SVOASRV\HPCHEM1\BNA G\DATA\BG102220\  
 Data File : BG047033.D  
 Acq On : 22 Oct 2020 15:44  
 Operator : CG/JU  
 Sample : L4483-05  
 Misc :  
 ALS Vial : 7 Sample Multiplier: 1

Instrument :  
 BNA\_G  
 ClientSampled :  
 C0FH3

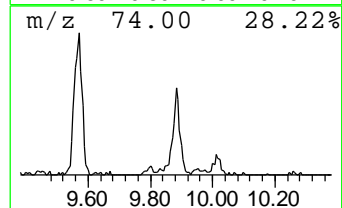
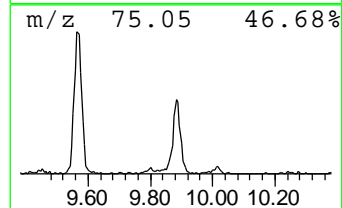
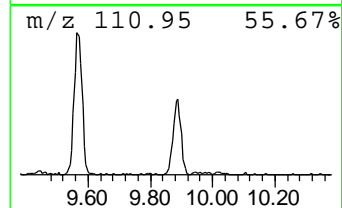
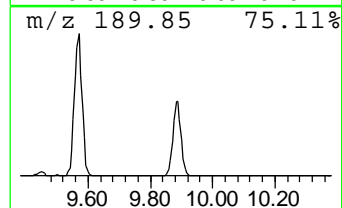
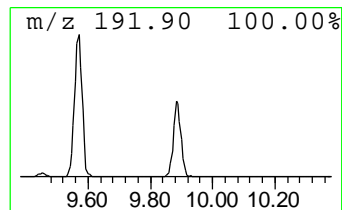
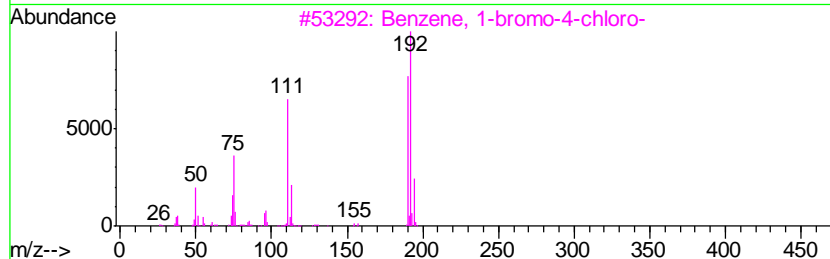
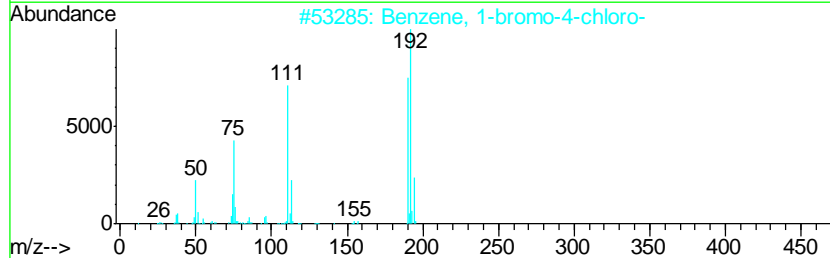
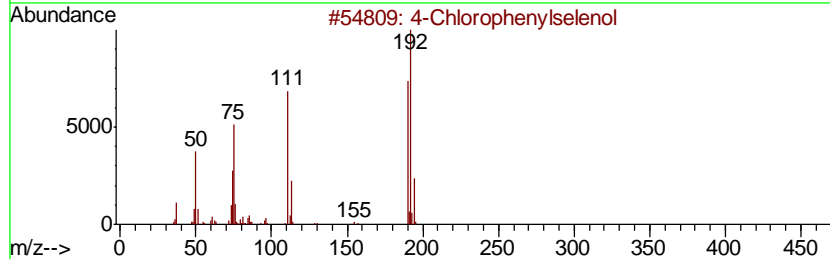
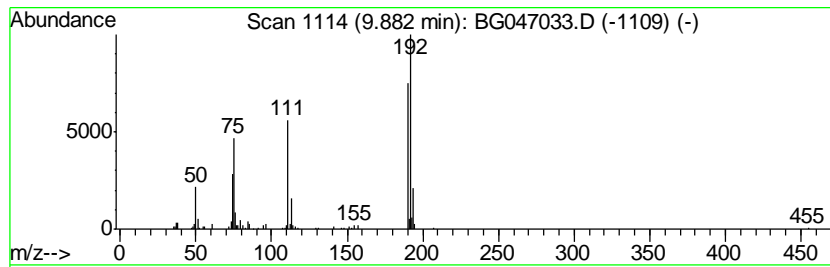
Quant Method : Z:\SVOASRV\HPCHEM1\BNA\_G\METHODS\SOM-EPA-BG102220MA.M  
 Quant Title : SVOA CALIBRATION

TIC Library : C:\DATABASE\NIST11.L  
 TIC Integration Parameters: LSCINT.P

\*\*\*\*\*  
 Peak Number 6 4-Chlorophenylselenol Concentration Rank 10

R.T.	EstConc	Area	Relative to ISTD	R.T.
9.88	11.20 ng/ul	245673	Naphthalene-d8	10.89

Hit#	of	Tentative ID	MW	MolForm	CAS#	Qual
1	5	4-Chlorophenylselenol	192	C6H5ClSe	016645-10-6	94
2		Benzene, 1-bromo-4-chloro-	190	C6H4BrCl	000106-39-8	93
3		Benzene, 1-bromo-4-chloro-	190	C6H4BrCl	000106-39-8	91
4		Benzene, 1-bromo-3-chloro-	190	C6H4BrCl	000108-37-2	91
5		Benzene, 1-bromo-2-chloro-	190	C6H4BrCl	000694-80-4	91



Data Path : Z:\SVOASRV\HPCHEM1\BNA G\DATA\BG102220\  
 Data File : BG047033.D  
 Acq On : 22 Oct 2020 15:44  
 Operator : CG/JU  
 Sample : L4483-05  
 Misc :  
 ALS Vial : 7 Sample Multiplier: 1

Instrument :  
 BNA\_G  
 ClientSampled :  
 C0FH3

Quant Method : Z:\SVOASRV\HPCHEM1\BNA\_G\METHODS\SOM-EPA-BG102220MA.M  
 Quant Title : SVOA CALIBRATION

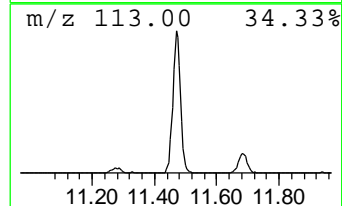
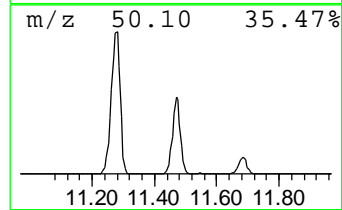
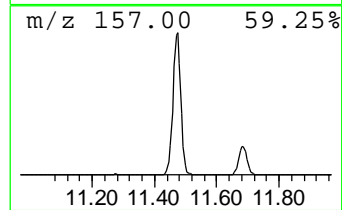
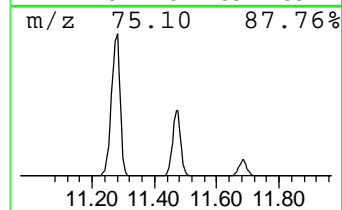
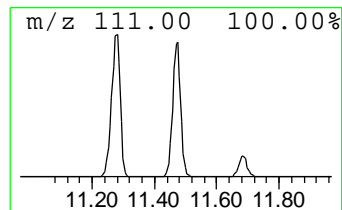
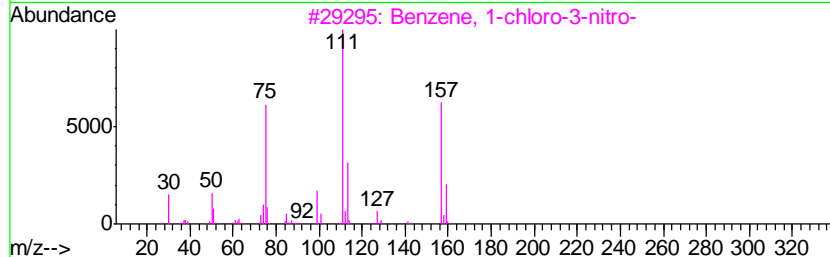
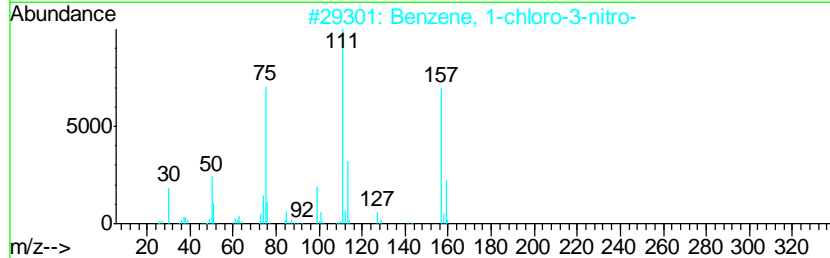
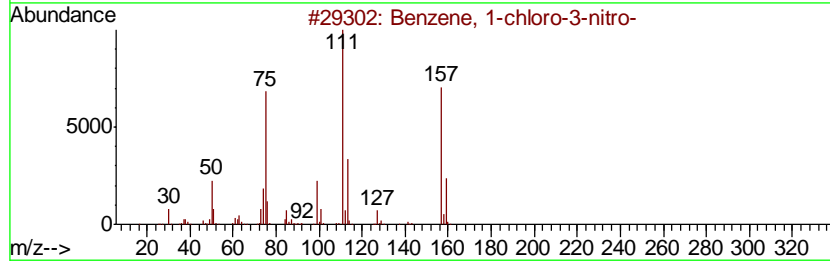
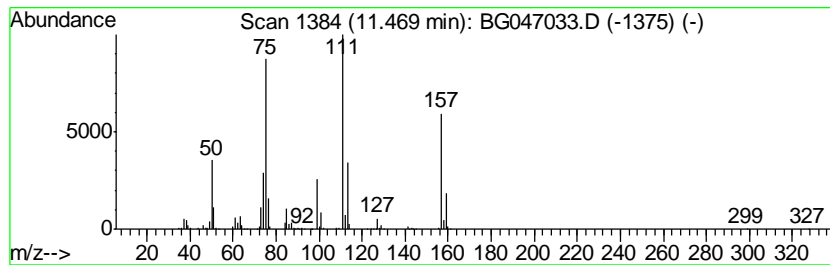
TIC Library : C:\DATABASE\NIST11.L  
 TIC Integration Parameters: LSCINT.P

\*\*\*\*\*  
 Peak Number 9 Benzene, 1-chloro-3-nitro- Concentration Rank 3

R.T.	EstConc	Area	Relative to ISTD	R.T.
11.47	53.47 ng/ul	1172580	Naphthalene-d8	10.89

Hit#	of	Tentative ID	MW	MolForm	CAS#	Qual
1	5	Benzene, 1-chloro-3-nitro-	157	C6H4ClNO2	000121-73-3	96
2		Benzene, 1-chloro-3-nitro-	157	C6H4ClNO2	000121-73-3	95
3		Benzene, 1-chloro-3-nitro-	157	C6H4ClNO2	000121-73-3	94
4		Benzene, 1-chloro-4-nitro-	157	C6H4ClNO2	000100-00-5	94
5		Benzene, 1-chloro-4-nitro-	157	C6H4ClNO2	000100-00-5	94



Data Path : Z:\SVOASRV\HPCHEM1\BNA G\DATA\BG102220\  
 Data File : BG047033.D  
 Acq On : 22 Oct 2020 15:44  
 Operator : CG/JU  
 Sample : L4483-05  
 Misc :  
 ALS Vial : 7 Sample Multiplier: 1

Instrument :  
 BNA\_G  
 ClientSampled :  
 C0FH3

Quant Method : Z:\SVOASRV\HPCHEM1\BNA\_G\METHODS\SOM-EPA-BG102220MA.M  
 Quant Title : SVOA CALIBRATION

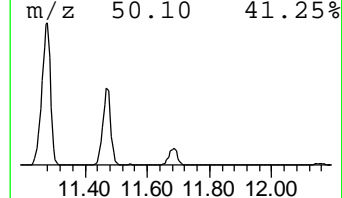
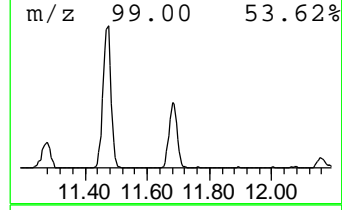
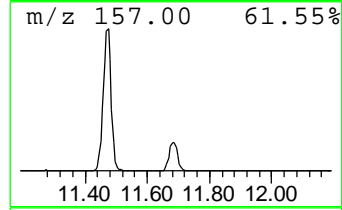
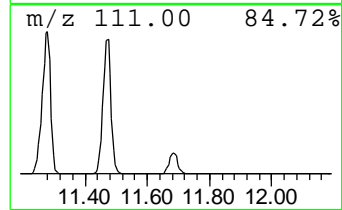
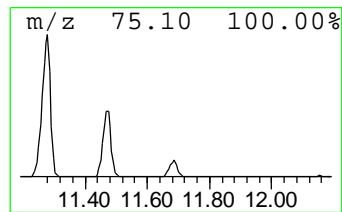
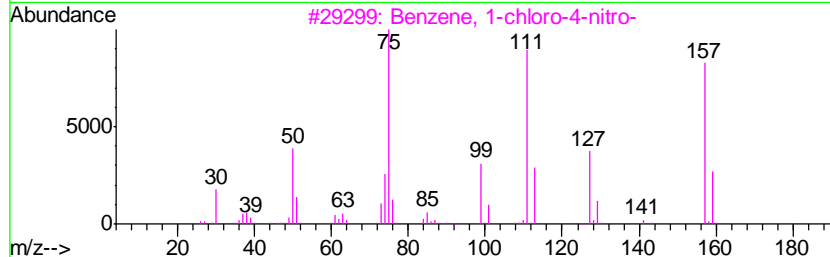
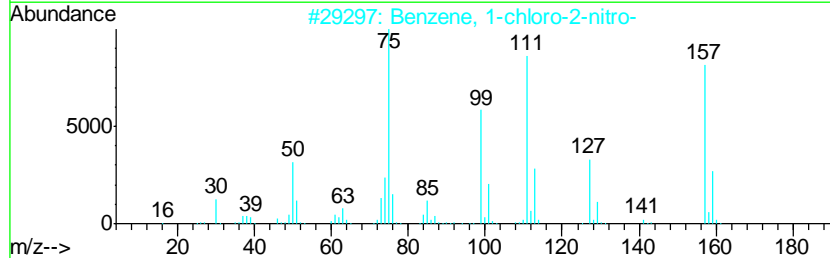
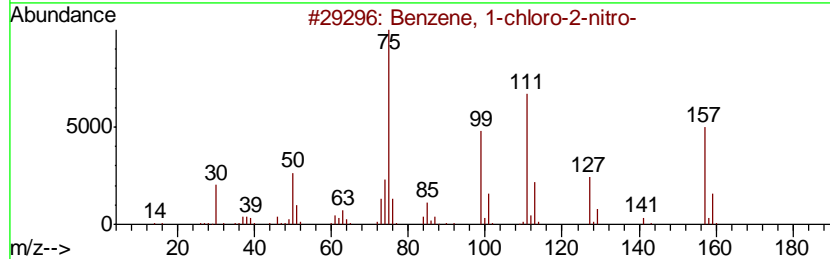
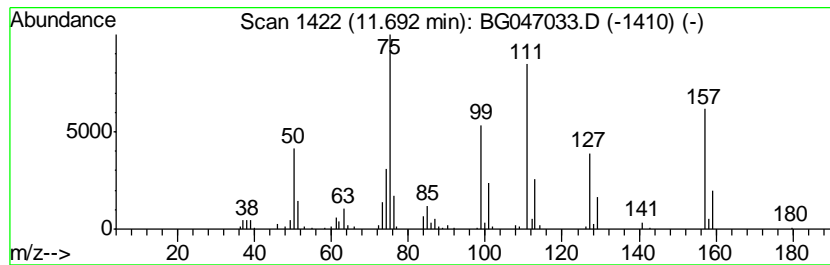
TIC Library : C:\DATABASE\NIST11.L  
 TIC Integration Parameters: LSCINT.P

\*\*\*\*\*  
 Peak Number 10 Benzene, 1-chloro-2-nitro- Concentration Rank 9

R.T.	EstConc	Area	Relative to ISTD	R.T.
11.69	13.61 ng/ul	298346	Naphthalene-d8	10.89

Hit#	of	Tentative ID	MW	MolForm	CAS#	Qual
1	5	Benzene, 1-chloro-2-nitro-	157	C6H4ClNO2	000088-73-3	96
2		Benzene, 1-chloro-2-nitro-	157	C6H4ClNO2	000088-73-3	96
3		Benzene, 1-chloro-4-nitro-	157	C6H4ClNO2	000100-00-5	95
4		Benzene, 1-chloro-3-nitro-	157	C6H4ClNO2	000121-73-3	94
5		Benzene, 1-chloro-4-nitro-	157	C6H4ClNO2	000100-00-5	94





Data Path : Z:\SVOASRV\HPCHEM1\BNA G\DATA\BG102220\  
 Data File : BG047033.D  
 Acq On : 22 Oct 2020 15:44  
 Operator : CG/JU  
 Sample : L4483-05  
 Misc :  
 ALS Vial : 7 Sample Multiplier: 1

Instrument :  
 BNA\_G  
 ClientSampleID :  
 C0FH3

Quant Method : Z:\SVOASRV\HPCHEM1\BNA\_G\METHODS\SOM-EPA-BG102220MA.M  
 Quant Title : SVOA CALIBRATION

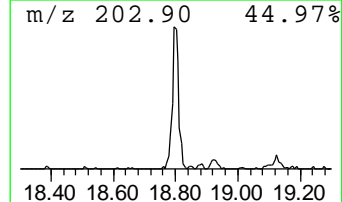
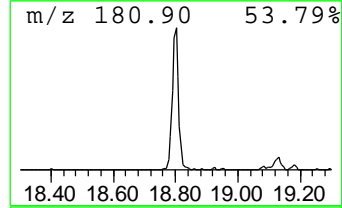
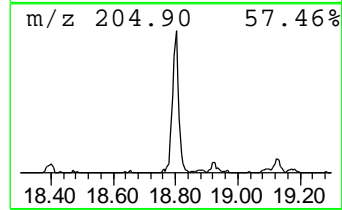
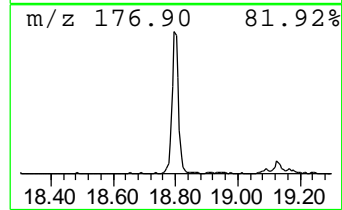
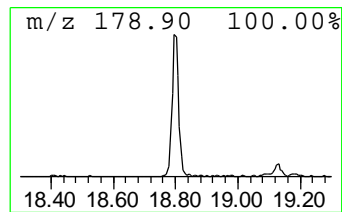
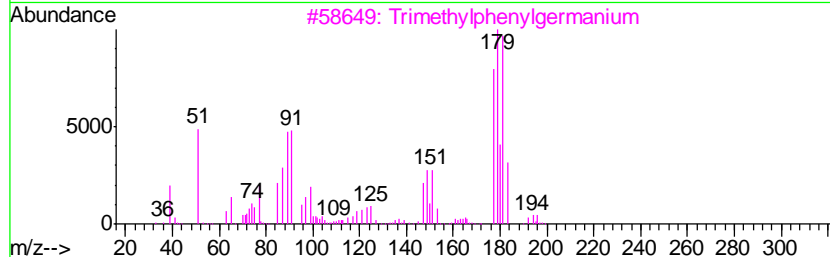
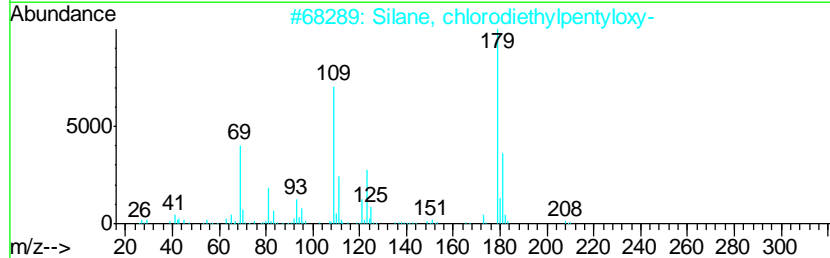
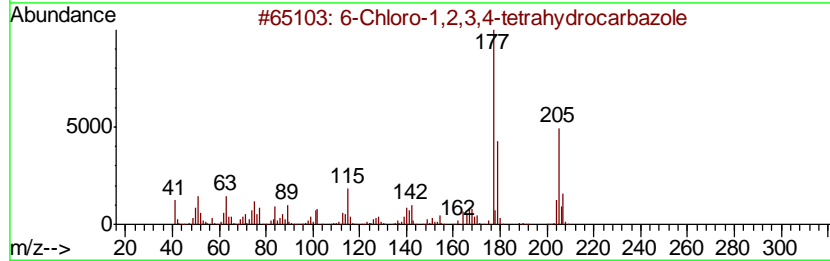
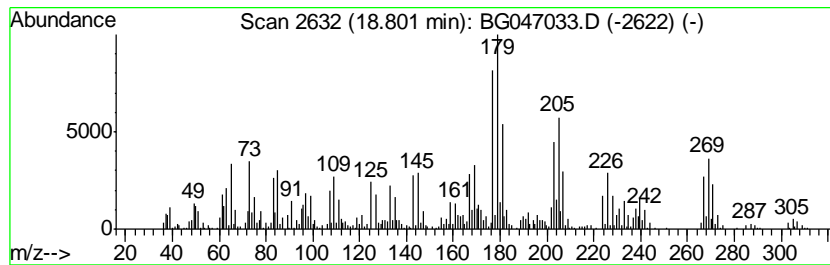
TIC Library : C:\DATABASE\NIST11.L  
 TIC Integration Parameters: LSCINT.P

\*\*\*\*\*  
 Peak Number 11 unknown-01 Concentration Rank 6

R.T.	EstConc	Area	Relative to ISTD	R.T.
18.80	20.89 ng/ul	826790	Phenanthrene-d10	17.43

Hit#	of	Tentative ID	MW	MolForm	CAS#	Qual
1	5	6-Chloro-1,2,3,4-tetrahydrocarba...	205	C12H12ClN	036684-65-8	38
2		Silane, chlorodiethylpentyloxy-	208	C9H21ClOSi	1000363-04-4	35
3		Trimethylphenylgermanium	196	C9H14Ge	001626-00-2	30
4		2H-1-Benzopyran, 3,4,4a,5,6,8a-h...	194	C13H22O	041678-32-4	25
5		5-Chloro-1H-indole-2-carboxylic ...	267	C12H14ClNO2Si	1000373-11-5	18



Data Path : Z:\SVOASRV\HPCHEM1\BNA G\DATA\BG102220\  
 Data File : BG047033.D  
 Acq On : 22 Oct 2020 15:44  
 Operator : CG/JU  
 Sample : L4483-05  
 Misc :  
 ALS Vial : 7 Sample Multiplier: 1

Instrument :  
 BNA\_G  
 ClientSampled :  
 C0FH3

Quant Method : Z:\SVOASRV\HPCHEM1\BNA\_G\METHODS\SOM-EPA-BG102220MA.M  
 Quant Title : SVOA CALIBRATION

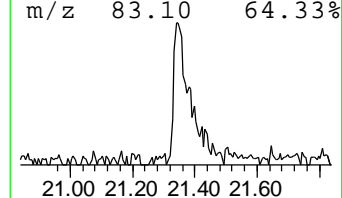
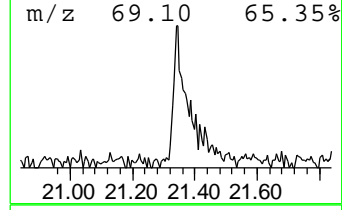
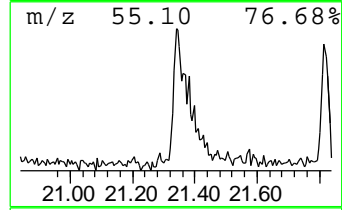
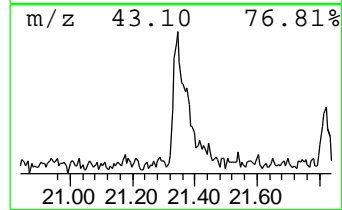
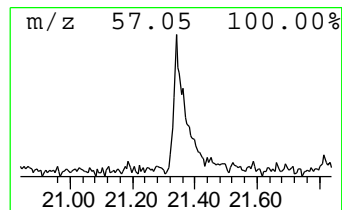
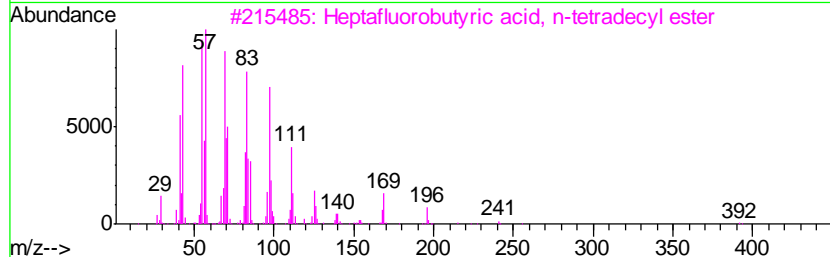
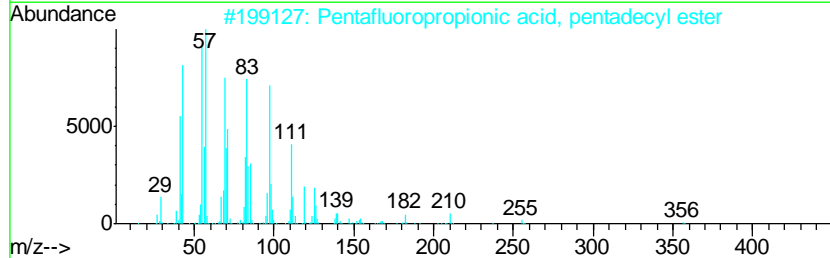
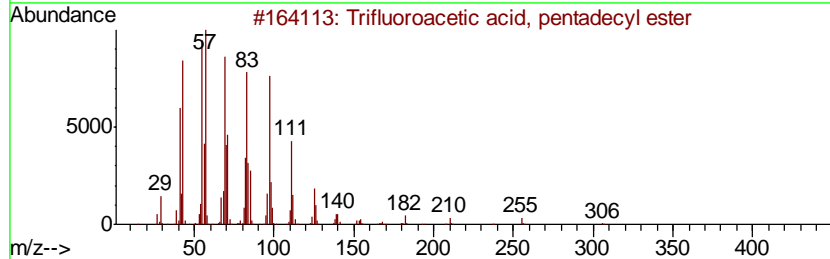
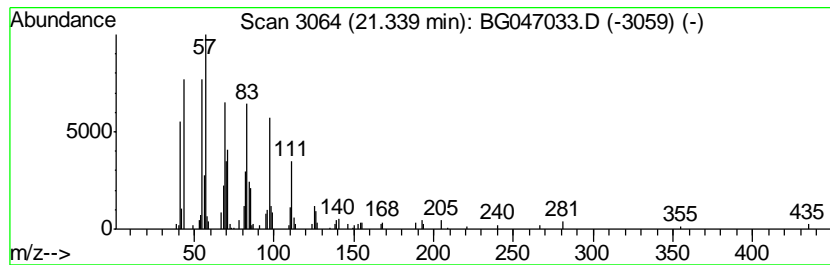
TIC Library : C:\DATABASE\NIST11.L  
 TIC Integration Parameters: LSCINT.P

\*\*\*\*\*  
 Peak Number 12 Trifluoroacetic acid, penta... Concentration Rank 11

R.T.	EstConc	Area	Relative to ISTD	R.T.
21.34	4.30 ng/ul	202465	Chrysene-d12	21.70

Hit#	of	Tentative ID	MW	MolForm	CAS#	Qual
1	5	Trifluoroacetic acid, pentadecyl...	324	C17H31F3O2	959010-23-2	91
2		Pentafluoropropionic acid, penta...	374	C18H31F5O2	959092-08-1	91
3		Heptafluorobutyric acid, n-tetra...	410	C18H29F7O2	007365-36-8	90
4		Pentafluoropropionic acid, tetra...	360	C17H29F5O2	006222-06-6	90
5		Tetradecyl trifluoroacetate	310	C16H29F3O2	006222-02-2	90



Data Path : Z:\SVOASRV\HPCHEM1\BNA\_G\DATA\BG102220\  
Data File : BG047033.D  
Acq On : 22 Oct 2020 15:44  
Operator : CG/JU  
Sample : L4483-05  
Misc :  
ALS Vial : 7 Sample Multiplier: 1

Instrument :  
BNA\_G  
ClientSampleId :  
C0FH3

Quant Method : Z:\SVOASRV\HPCHEM1\BNA\_G\METHODS\SOM-EPA-BG102220MA.M  
Quant Title : SVOA CALIBRATION

TIC Library : C:\DATABASE\NIST11.L  
TIC Integration Parameters: LSCINT.P

TIC Top Hit name	RT	EstConc	Units	Response	--Internal Standard--			
					#	RT	Resp	Conc
4-Chloropyridine	5.45	22.5	ng/ul	125507000	1	8.12	111689000	20.0
Benzene, 1-bromo-...	9.57	17.7	ng/ul	387946	2	10.89	438559	20.0
4-Chlorophenylsel...	9.88	11.2	ng/ul	245673	2	10.89	438559	20.0
Benzene, 1-chloro...	11.47	53.5	ng/ul	1172580	2	10.89	438559	20.0
Benzene, 1-chloro...	11.69	13.6	ng/ul	298346	2	10.89	438559	20.0
unknown-01	18.80	20.9	ng/ul	826790	4	17.43	791595	20.0
Trifluoroacetic a...	21.34	4.3	ng/ul	202465	5	21.70	941270	20.0