

Data Path : Z:\svoasrv\HPCHEM1\BNA_G\Data\BG102822\
 Data File : BG055341.D
 Acq On : 28 Oct 2022 14:31
 Operator : CG/JU
 Sample : PB148557BS
 Misc :
 ALS Vial : 8 Sample Multiplier: 1

Instrument :
 BNA_G
 ClientSampleId :
 PB148557BS

Quant Time: Oct 29 04:30:46 2022
 Quant Method : Z:\svoasrv\HPCHEM1\BNA_G\Methods\8270-BG102422.M
 Quant Title : ASP BNA STANDARDS FOR 5 POINT CALIBRATION
 QLast Update : Mon Oct 24 16:54:05 2022
 Response via : Initial Calibration

Compound	R.T.	QIon	Response	Conc Units	Dev(Min)
Internal Standards					
1) 1,4-Dichlorobenzene-d4	8.267	152	35194	20.000 ng	0.00
21) Naphthalene-d8	11.099	136	158246	20.000 ng	0.00
39) Acenaphthene-d10	14.877	164	110471	20.000 ng	0.00
64) Phenanthrene-d10	17.609	188	261041	20.000 ng	# 0.00
76) Chrysene-d12	21.893	240	245066	20.000 ng	0.00
86) Perylene-d12	25.283	264	259219	20.000 ng	0.00
System Monitoring Compounds					
5) 2-Fluorophenol	5.794	112	300822	149.665 ng	0.00
7) Phenol-d6	7.415	99	392335	134.731 ng	0.00
23) Nitrobenzene-d5	9.437	82	240208	77.511 ng	0.00
42) 2,4,6-Tribromophenol	16.358	330	179071	149.112 ng	0.00
45) 2-Fluorobiphenyl	13.508	172	550971	81.633 ng	0.00
79) Terphenyl-d14	20.189	244	1016953	86.218 ng	0.00
Target Compounds					
2) 1,4-Dioxane	3.596	88	30746	31.681 ng	98
3) Pyridine	4.014	79	85164	29.140 ng	94
4) n-Nitrosodimethylamine	3.925	42	44784	34.490 ng	90
6) Aniline	7.580	93	146733	38.491 ng	99
8) 2-Chlorophenol	7.827	128	107702	46.090 ng	96
9) Benzaldehyde	7.392	77	66265	33.329 ng	96
10) Phenol	7.439	94	139611	42.803 ng	99
11) bis(2-Chloroethyl)ether	7.668	93	97018	39.403 ng	99
12) 1,3-Dichlorobenzene	8.156	146	110399	43.300 ng	98
13) 1,4-Dichlorobenzene	8.303	146	112137	43.060 ng	98
14) 1,2-Dichlorobenzene	8.626	146	108840	43.408 ng	96
15) Benzyl Alcohol	8.502	79	99799	40.954 ng	99
16) 2,2'-oxybis(1-Chloropr...	8.784	45	143708	35.664 ng	97
17) 2-Methylphenol	8.702	107	97394	42.221 ng	99
18) Hexachloroethane	9.360	117	38651	41.680 ng	89
19) n-Nitroso-di-n-propyla...	9.066	70	85999	35.564 ng	95
20) 3+4-Methylphenols	9.031	107	134337	40.660 ng	97
22) Acetophenone	9.096	105	162244	40.103 ng	# 95
24) Nitrobenzene	9.484	77	123782	38.360 ng	95
25) Isophorone	10.006	82	239471	38.257 ng	96
26) 2-Nitrophenol	10.200	139	63101	44.655 ng	92
27) 2,4-Dimethylphenol	10.247	122	105876	47.993 ng	98
28) bis(2-Chloroethoxy)met...	10.477	93	135968	43.022 ng	98
29) 2,4-Dichlorophenol	10.741	162	107981	45.627 ng	96
30) 1,2,4-Trichlorobenzene	10.952	180	104050	43.079 ng	97
31) Naphthalene	11.146	128	331009	39.210 ng	99
32) Benzoic acid	10.406	122	55083	34.341 ng	98
33) 4-Chloroaniline	11.246	127	119794	33.192 ng	98
34) Hexachlorobutadiene	11.417	225	63752	46.195 ng	99
35) Caprolactam	12.022	113	20504	18.668 ng	94
36) 4-Chloro-3-methylphenol	12.351	107	122837	41.250 ng	99
37) 2-Methylnaphthalene	12.733	142	235977	38.771 ng	99
38) 1-Methylnaphthalene	12.944	142	227432	37.876 ng	98
40) 1,2,4,5-Tetrachloroben...	13.091	216	119802	44.963 ng	100
41) Hexachlorocyclopentadiene	13.068	237	131413	102.264 ng	97
43) 2,4,6-Trichlorophenol	13.326	196	86229	43.818 ng	99

Data Path : Z:\svoasrv\HPCHEM1\BNA_G\Data\BG102822\
 Data File : BG055341.D
 Acq On : 28 Oct 2022 14:31
 Operator : CG/JU
 Sample : PB148557BS
 Misc :
 ALS Vial : 8 Sample Multiplier: 1

Instrument :
 BNA_G
 ClientSampleId :
 PB148557BS

Quant Time: Oct 29 04:30:46 2022
 Quant Method : Z:\svoasrv\HPCHEM1\BNA_G\Methods\8270-BG102422.M
 Quant Title : ASP BNA STANDARDS FOR 5 POINT CALIBRATION
 QLast Update : Mon Oct 24 16:54:05 2022
 Response via : Initial Calibration

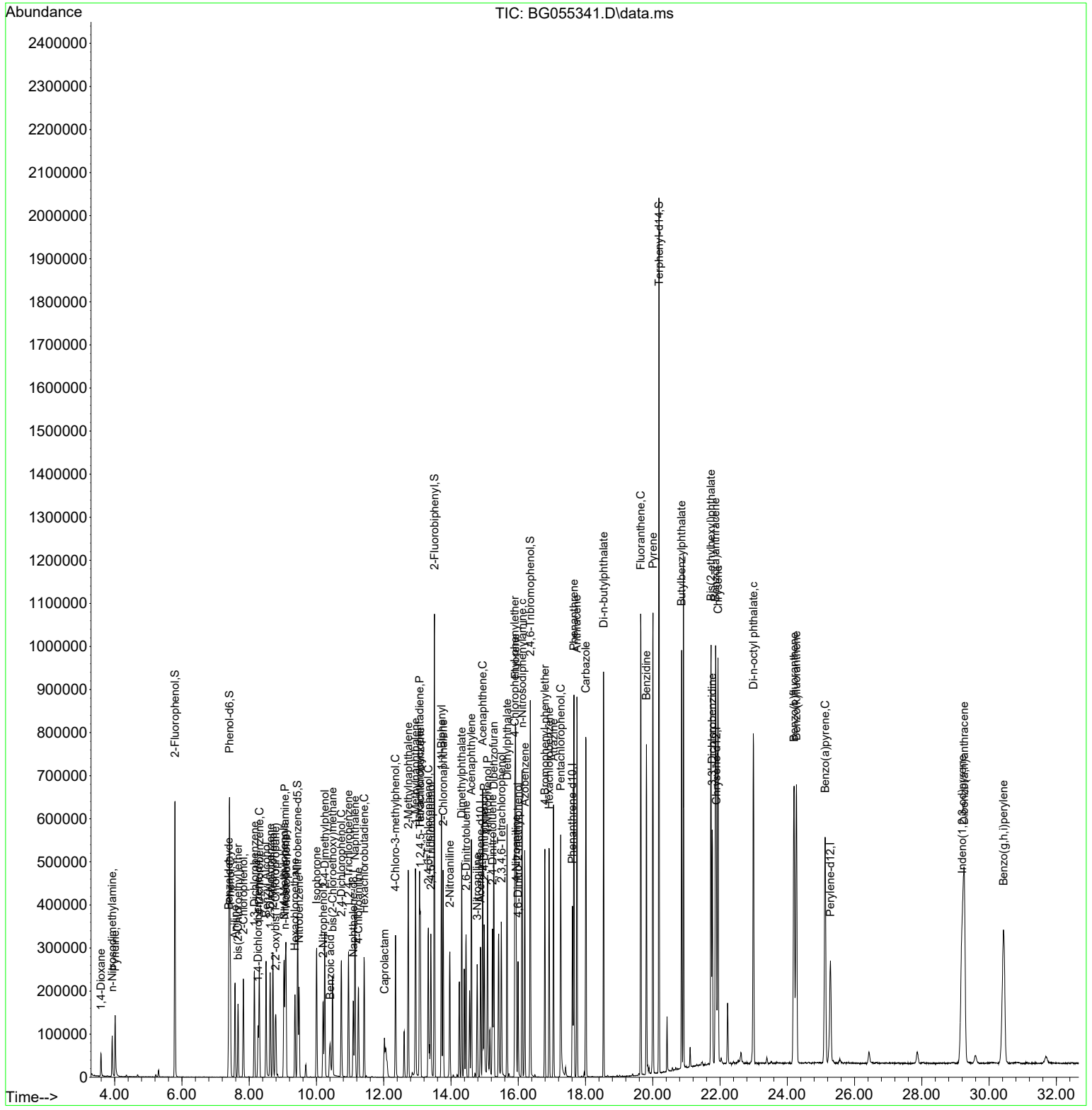
Compound	R.T.	QIon	Response	Conc	Units	Dev(Min)
44) 2,4,5-Trichlorophenol	13.403	196	94844	43.574	ng	96
46) 1,1'-Biphenyl	13.720	154	317842	41.949	ng	99
47) 2-Chloronaphthalene	13.767	162	244013	40.840	ng	97
48) 2-Nitroaniline	13.967	65	88072	37.692	ng	92
49) Acenaphthylene	14.607	152	405494	39.315	ng	99
50) Dimethylphthalate	14.319	163	337455	38.906	ng	99
51) 2,6-Dinitrotoluene	14.448	165	73640	41.723	ng	90
52) Acenaphthene	14.942	154	238063	36.211	ng	99
53) 3-Nitroaniline	14.777	138	70757	31.897	ng	98
54) 2,4-Dinitrophenol	14.989	184	89334	86.111	ng	96
55) Dibenzofuran	15.271	168	388348	39.373	ng	98
56) 4-Nitrophenol	15.089	139	133727	84.284	ng	95
57) 2,4-Dinitrotoluene	15.236	165	108479	42.354	ng	88
58) Fluorene	15.917	166	316668	38.586	ng	98
59) 2,3,4,6-Tetrachlorophenol	15.500	232	82546	42.539	ng	95
60) Diethylphthalate	15.670	149	359751	38.991	ng	97
61) 4-Chlorophenyl-phenyle...	15.900	204	160538	42.567	ng	96
62) 4-Nitroaniline	15.941	138	91327	39.177	ng	97
63) Azobenzene	16.193	77	323699	36.013	ng	98
65) 4,6-Dinitro-2-methylph...	15.994	198	63908	44.534	ng	93
66) n-Nitrosodiphenylamine	16.117	169	288830	39.752	ng	99
67) 4-Bromophenyl-phenylether	16.793	248	108396	42.741	ng	96
68) Hexachlorobenzene	16.922	284	123103	42.930	ng	95
69) Atrazine	17.051	200	121925	49.349	ng	99
70) Pentachlorophenol	17.263	266	129535	79.963	ng	97
71) Phenanthrene	17.656	178	542378	38.960	ng	99
72) Anthracene	17.744	178	551306	40.508	ng	100
73) Carbazole	18.009	167	538946	41.172	ng	99
74) Di-n-butylphthalate	18.538	149	673587	41.165	ng	100
75) Fluoranthene	19.642	202	658843	40.615	ng	99
77) Benzidine	19.813	184	453104	76.361	ng	99
78) Pyrene	20.007	202	664956	39.586	ng	99
80) Butylbenzylphthalate	20.858	149	296915	37.406	ng	94
81) Benzo(a)anthracene	21.869	228	633482	38.494	ng	99
82) 3,3'-Dichlorobenzidine	21.769	252	210239	39.226	ng	100
83) Chrysene	21.940	228	594964	38.061	ng	99
84) Bis(2-ethylhexyl)phtha...	21.734	149	433183	38.202	ng	98
85) Di-n-octyl phthalate	22.991	149	727559	38.514	ng	96
87) Indeno(1,2,3-cd)pyrene	29.202	276	777085	40.588	ng	# 95
88) Benzo(b)fluoranthene	24.202	252	683343	43.825	ng	98
89) Benzo(k)fluoranthene	24.272	252	644735	40.949	ng	98
90) Benzo(a)pyrene	25.124	252	596160	44.585	ng	98
91) Dibenzo(a,h)anthracene	29.260	278	681489	43.375	ng	98
92) Benzo(g,h,i)perylene	30.430	276	665793	42.723	ng	98

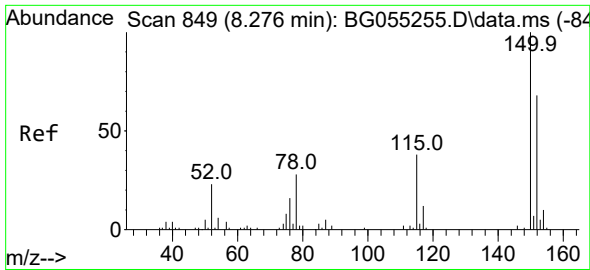
(#) = qualifier out of range (m) = manual integration (+) = signals summed

Data Path : Z:\svoasrv\HPCHEM1\BNA_G\Data\BG102822\
 Data File : BG055341.D
 Acq On : 28 Oct 2022 14:31
 Operator : CG/JU
 Sample : PB148557BS
 Misc :
 ALS Vial : 8 Sample Multiplier: 1

Instrument :
 BNA_G
 ClientSampleId :
 PB148557BS

Quant Time: Oct 29 04:30:46 2022
 Quant Method : Z:\svoasrv\HPCHEM1\BNA_G\Methods\8270-BG102422.M
 Quant Title : ASP BNA STANDARDS FOR 5 POINT CALIBRATION
 QLast Update : Mon Oct 24 16:54:05 2022
 Response via : Initial Calibration

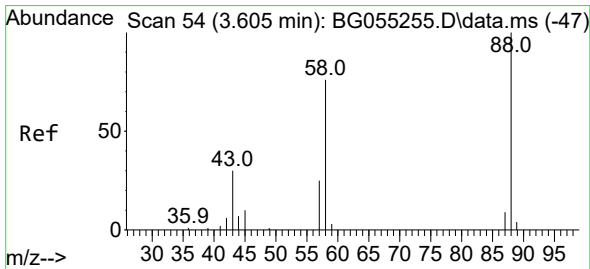
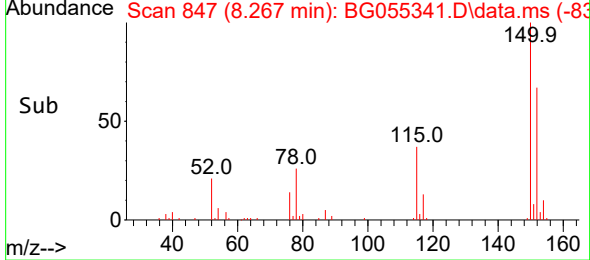
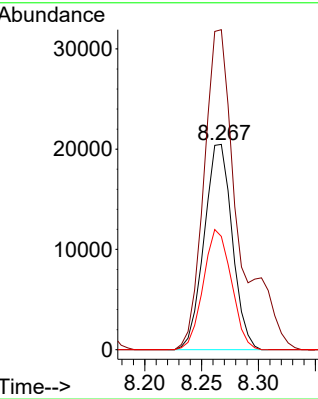
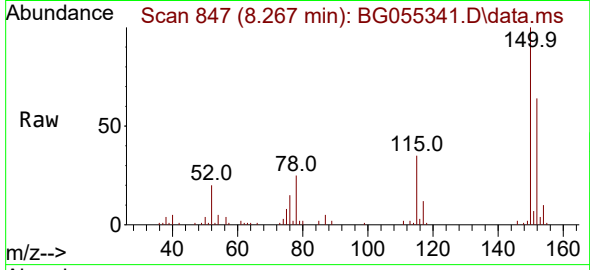




#1
 1,4-Dichlorobenzene-d4
 Concen: 20.000 ng
 RT: 8.267 min Scan# 84
 Delta R.T. -0.009 min
 Lab File: BG055341.D
 Acq: 28 Oct 2022 14:31

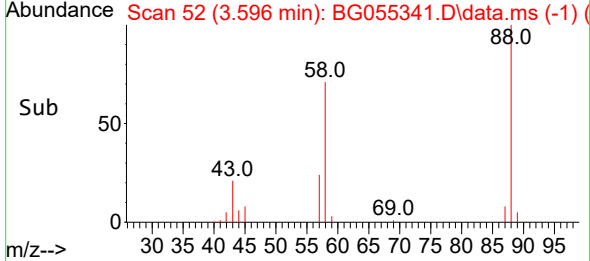
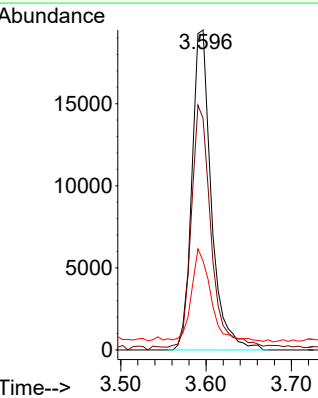
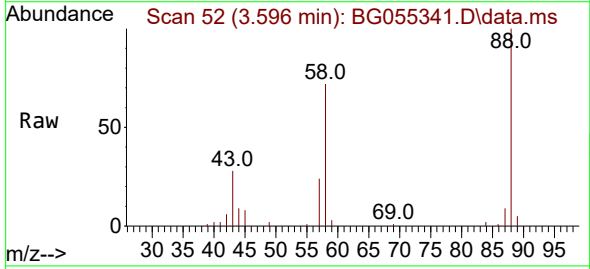
Instrument :
 BNA_G
 ClientSampleId :
 PB148557BS

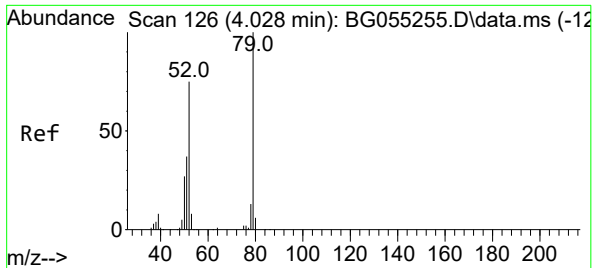
Tgt Ion:152 Resp: 35194
 Ion Ratio Lower Upper
 152 100
 150 155.9 118.2 177.4
 115 55.2 44.5 66.7



#2
 1,4-Dioxane
 Concen: 31.681 ng
 RT: 3.596 min Scan# 52
 Delta R.T. -0.009 min
 Lab File: BG055341.D
 Acq: 28 Oct 2022 14:31

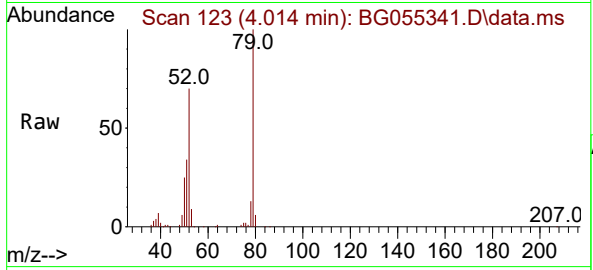
Tgt Ion: 88 Resp: 30746
 Ion Ratio Lower Upper
 88 100
 58 76.9 61.0 91.6
 43 29.6 21.5 32.3



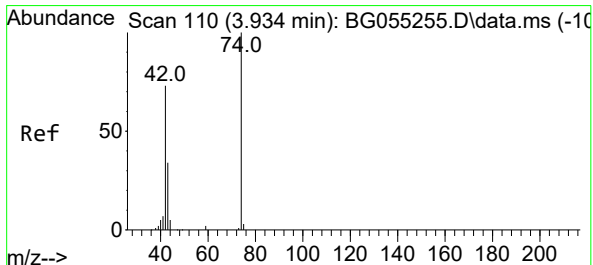
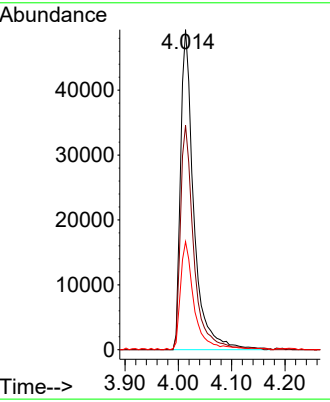
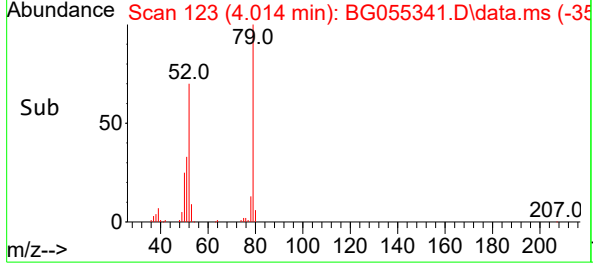


#3
 Pyridine
 Concen: 29.140 ng
 RT: 4.014 min Scan# 11
 Delta R.T. -0.015 min
 Lab File: BG055341.D
 Acq: 28 Oct 2022 14:31

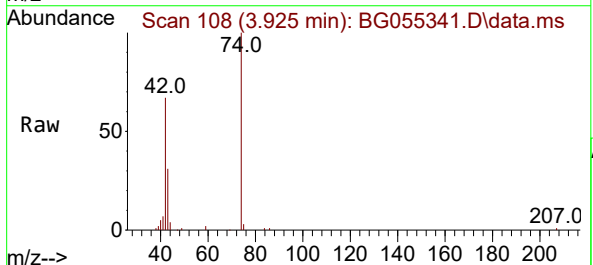
Instrument : BNA_G
 ClientSampleId : PB148557BS



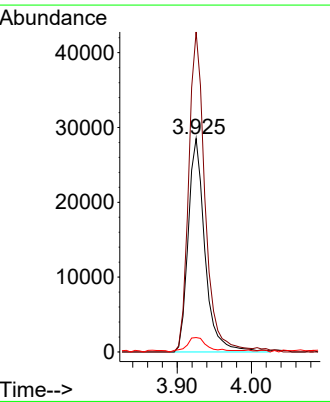
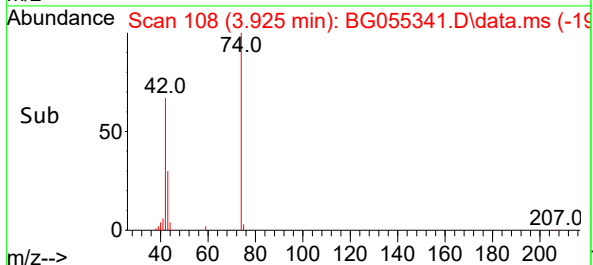
Tgt Ion: 79 Resp: 85164
 Ion Ratio Lower Upper
 79 100
 52 70.1 59.9 89.9
 51 33.7 30.3 45.5

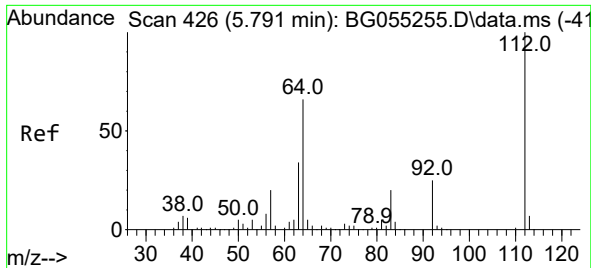


#4
 n-Nitrosodimethylamine
 Concen: 34.490 ng
 RT: 3.925 min Scan# 108
 Delta R.T. -0.009 min
 Lab File: BG055341.D
 Acq: 28 Oct 2022 14:31



Tgt Ion: 42 Resp: 44784
 Ion Ratio Lower Upper
 42 100
 74 149.9 109.8 164.6
 44 6.7 6.5 9.7





#5
 2-Fluorophenol
 Concen: 149.665 ng
 RT: 5.794 min Scan# 41
 Delta R.T. 0.003 min
 Lab File: BG055341.D
 Acq: 28 Oct 2022 14:31

Instrument :

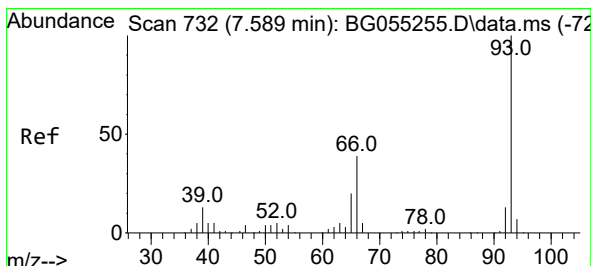
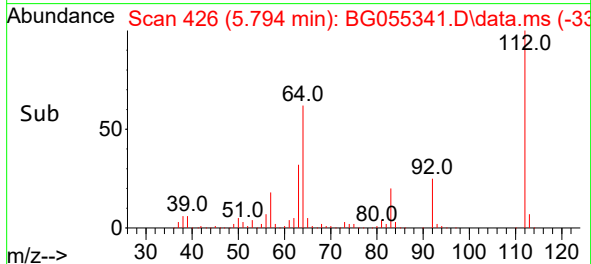
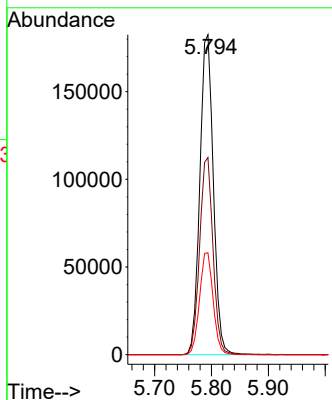
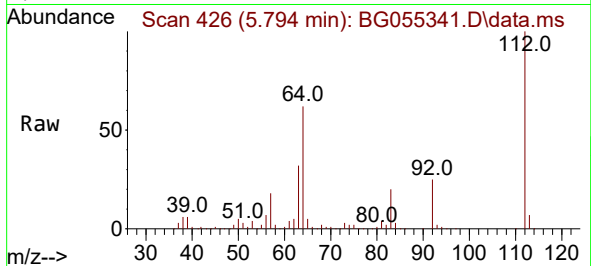
BNA_G

ClientSampleId :

PB148557BS

Tgt Ion:112 Resp: 300822

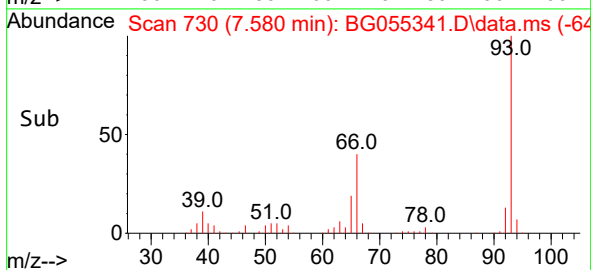
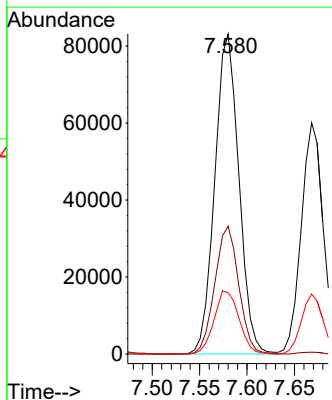
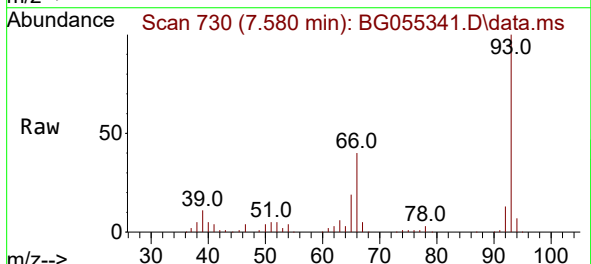
Ion	Ratio	Lower	Upper
112	100		
64	61.6	52.6	78.8
63	31.9	27.1	40.7

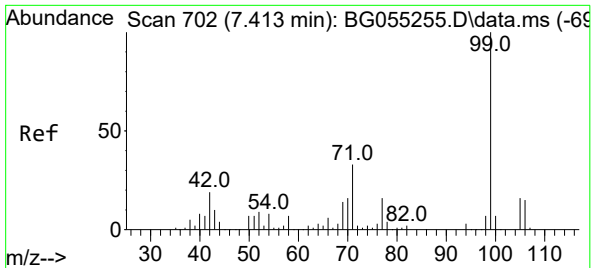


#6
 Aniline
 Concen: 38.491 ng
 RT: 7.580 min Scan# 730
 Delta R.T. -0.009 min
 Lab File: BG055341.D
 Acq: 28 Oct 2022 14:31

Tgt Ion: 93 Resp: 146733

Ion	Ratio	Lower	Upper
93	100		
66	39.9	31.6	47.4
65	19.2	16.0	24.0

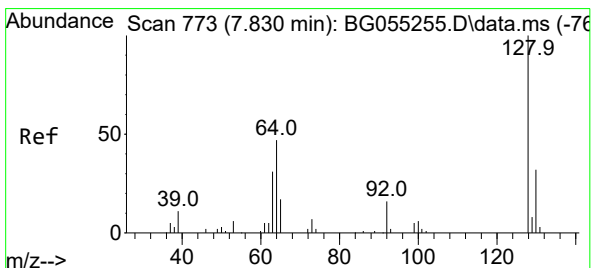
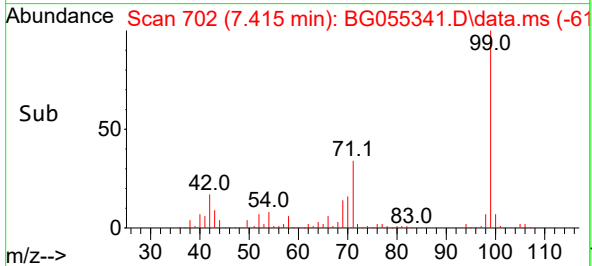
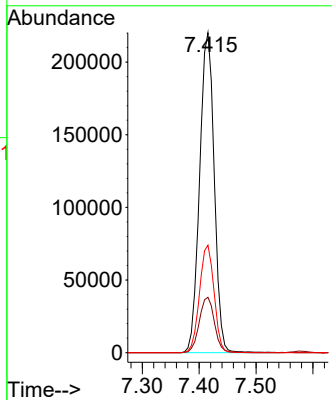
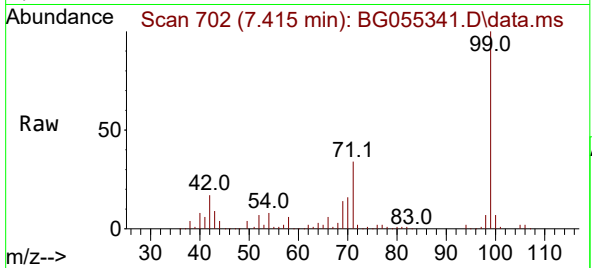




#7
 Phenol-d6
 Concen: 134.731 ng
 RT: 7.415 min Scan# 702
 Delta R.T. 0.003 min
 Lab File: BG055341.D
 Acq: 28 Oct 2022 14:31

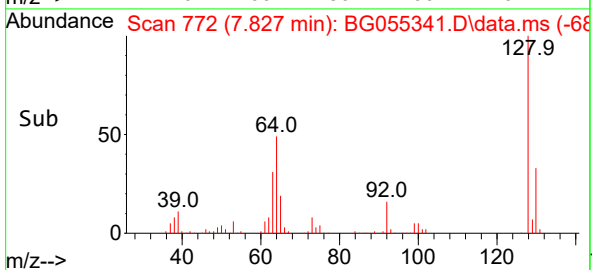
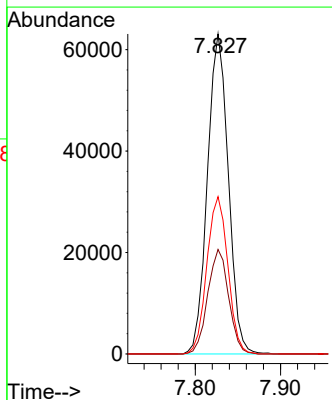
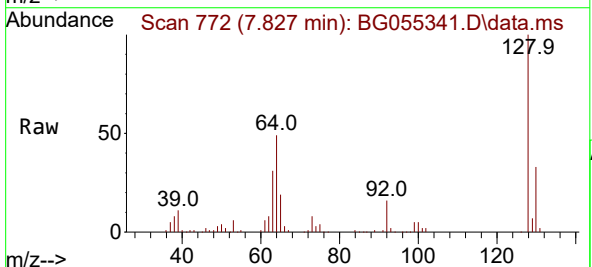
Instrument :
 BNA_G
 ClientSampleId :
 PB148557BS

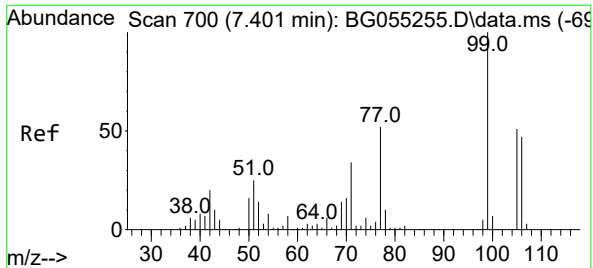
Tgt Ion	Resp	Ion Ratio	Lower	Upper
99	392335	100		
42	17.3	15.2	22.8	
71	33.6	26.2	39.4	



#8
 2-Chlorophenol
 Concen: 46.090 ng
 RT: 7.827 min Scan# 772
 Delta R.T. -0.003 min
 Lab File: BG055341.D
 Acq: 28 Oct 2022 14:31

Tgt Ion	Resp	Ion Ratio	Lower	Upper
128	107702	100		
130	32.6	12.4	52.4	
64	49.1	33.2	73.2	



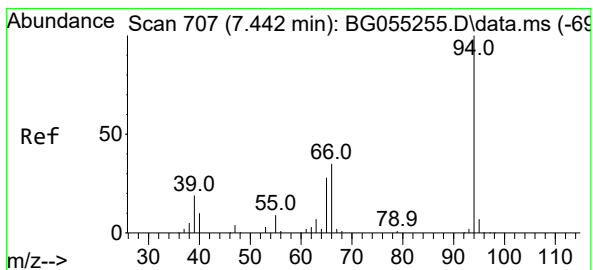
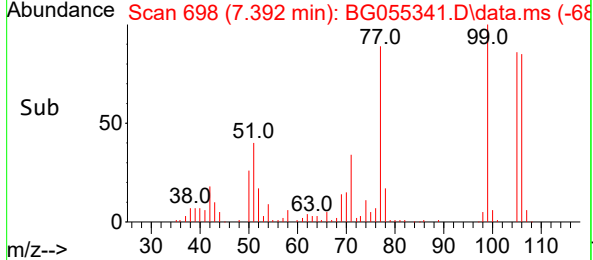
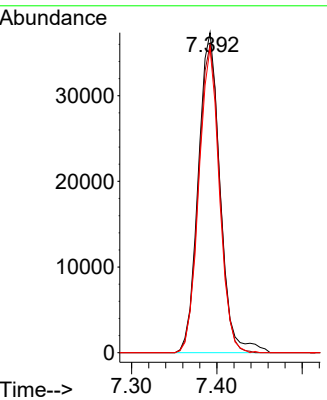
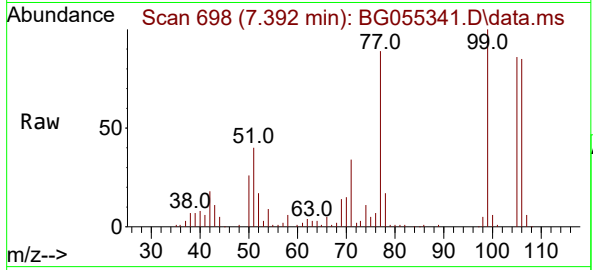


#9
Benzaldehyde
Concen: 33.329 ng
RT: 7.392 min Scan# 61
Delta R.T. -0.009 min
Lab File: BG055341.D
Acq: 28 Oct 2022 14:31

Instrument : BNA_G
ClientSampleId : PB148557BS

Tgt Ion: 77 Resp: 66265

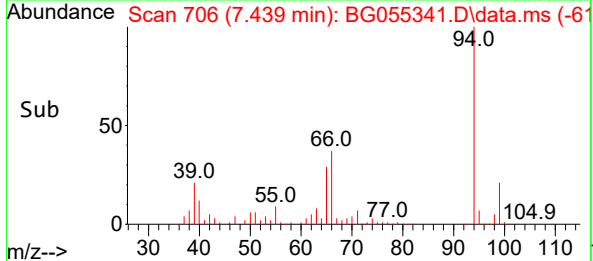
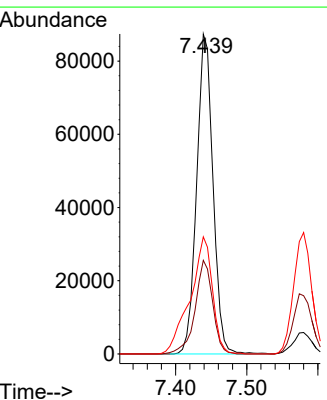
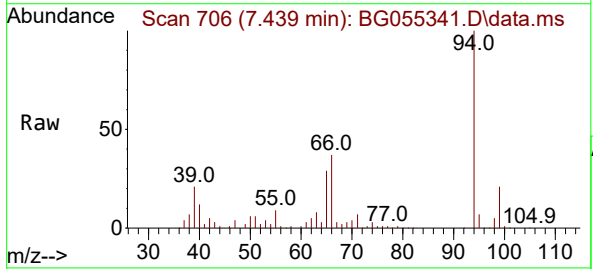
Ion	Ratio	Lower	Upper
77	100		
105	96.1	77.9	117.9
106	95.2	69.9	109.9

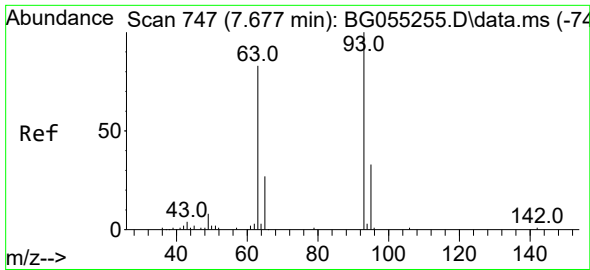


#10
Phenol
Concen: 42.803 ng
RT: 7.439 min Scan# 706
Delta R.T. -0.003 min
Lab File: BG055341.D
Acq: 28 Oct 2022 14:31

Tgt Ion: 94 Resp: 139611

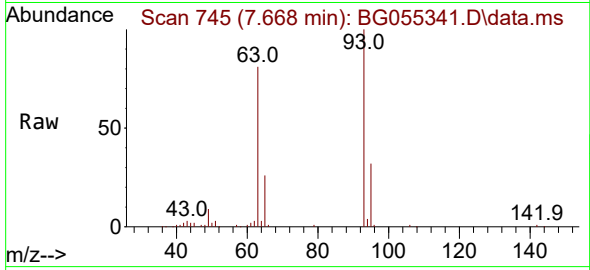
Ion	Ratio	Lower	Upper
94	100		
65	29.3	8.4	48.4
66	36.6	16.3	56.3





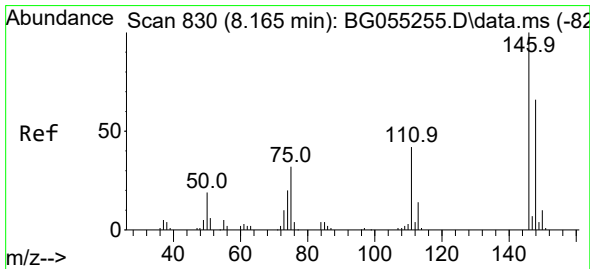
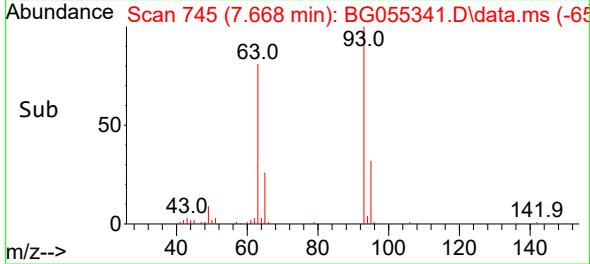
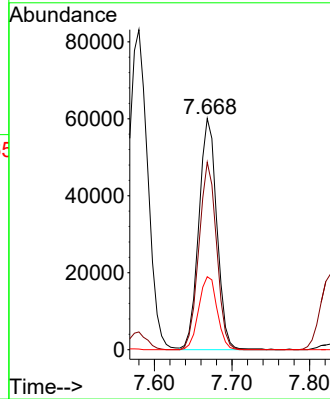
#11
 bis(2-Chloroethyl)ether
 Concen: 39.403 ng
 RT: 7.668 min Scan# 74
 Delta R.T. -0.009 min
 Lab File: BG055341.D
 Acq: 28 Oct 2022 14:31

Instrument :
 BNA_G
 ClientSampleId :
 PB148557BS



Tgt Ion: 93 Resp: 97018

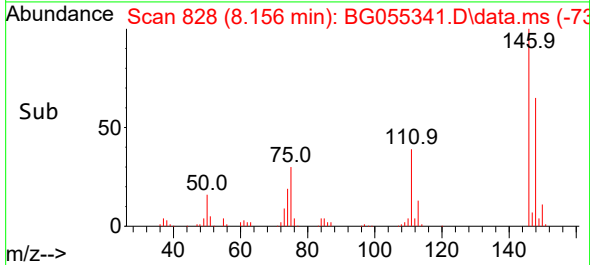
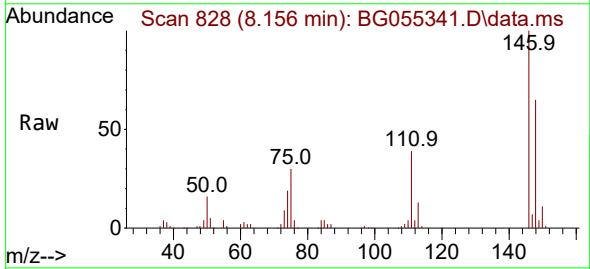
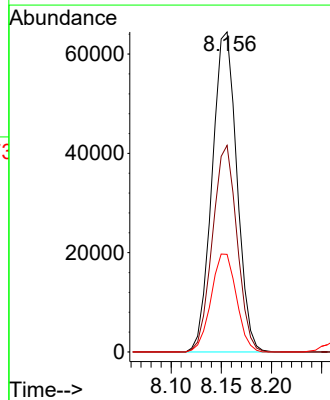
Ion	Ratio	Lower	Upper
93	100		
63	81.2	62.0	102.0
95	31.6	12.4	52.4

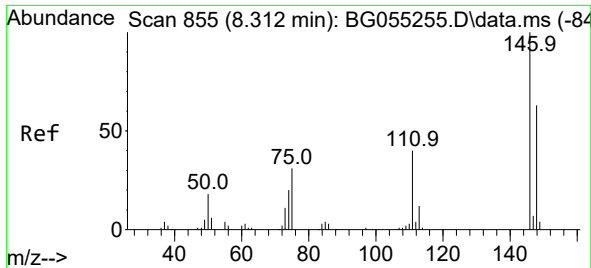


#12
 1,3-Dichlorobenzene
 Concen: 43.300 ng
 RT: 8.156 min Scan# 828
 Delta R.T. -0.009 min
 Lab File: BG055341.D
 Acq: 28 Oct 2022 14:31

Tgt Ion: 146 Resp: 110399

Ion	Ratio	Lower	Upper
146	100		
148	64.5	52.9	79.3
75	30.5	25.8	38.6

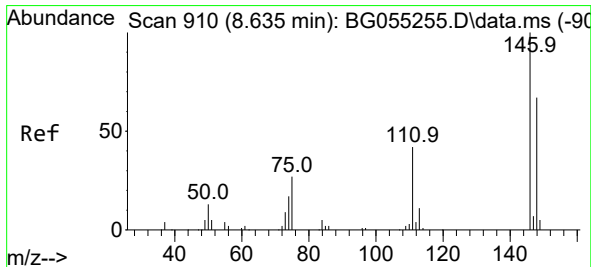
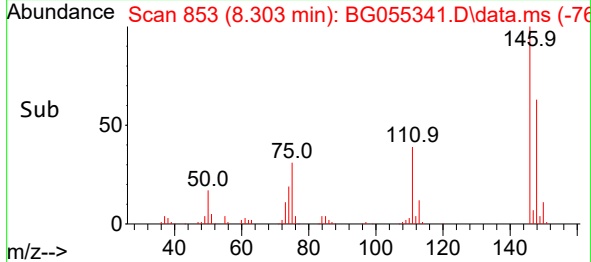
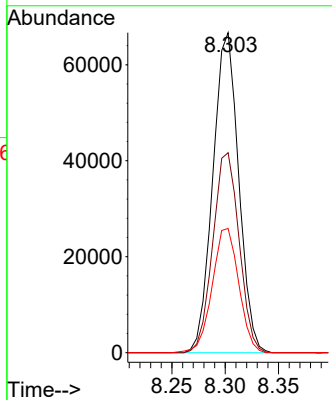
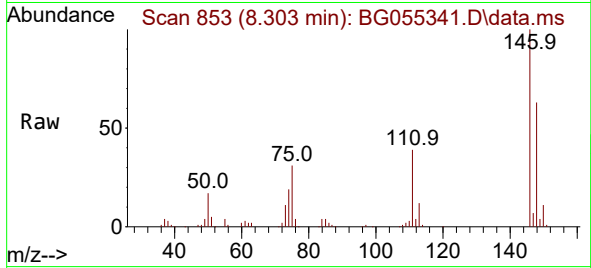




#13
 1,4-Dichlorobenzene
 Concen: 43.060 ng
 RT: 8.303 min Scan# 811
 Delta R.T. -0.009 min
 Lab File: BG055341.D
 Acq: 28 Oct 2022 14:31

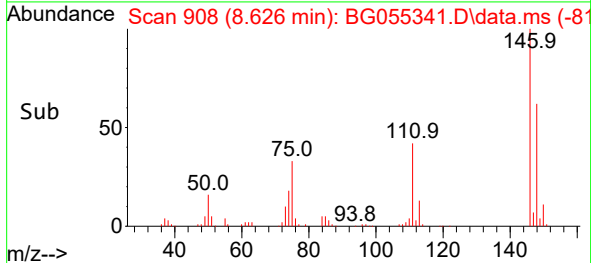
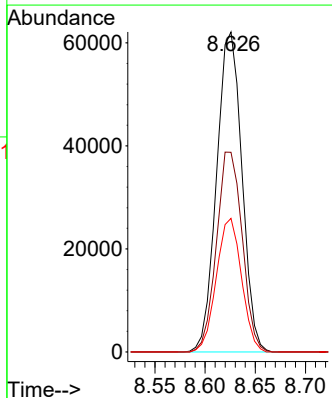
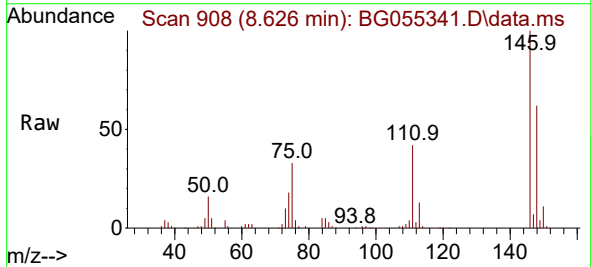
Instrument :
 BNA_G
 ClientSampleId :
 PB148557BS

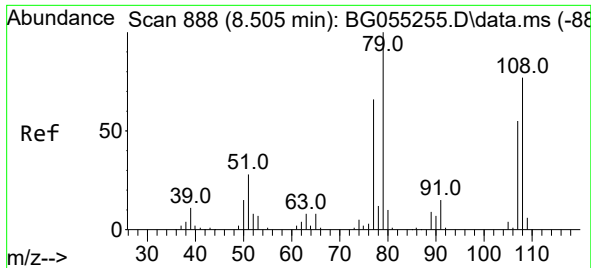
Tgt Ion:146 Resp: 112137
 Ion Ratio Lower Upper
 146 100
 148 62.5 50.5 75.7
 111 38.8 32.4 48.6



#14
 1,2-Dichlorobenzene
 Concen: 43.408 ng
 RT: 8.626 min Scan# 908
 Delta R.T. -0.009 min
 Lab File: BG055341.D
 Acq: 28 Oct 2022 14:31

Tgt Ion:146 Resp: 108840
 Ion Ratio Lower Upper
 146 100
 148 62.4 53.4 80.0
 111 41.8 34.0 51.0

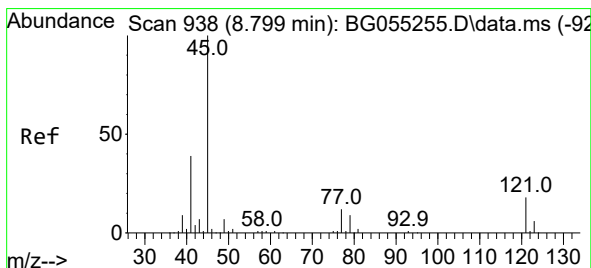
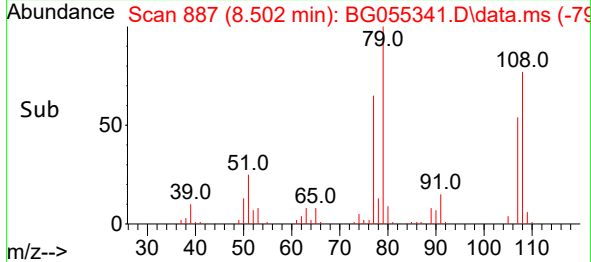
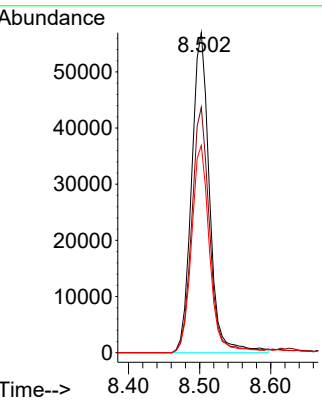
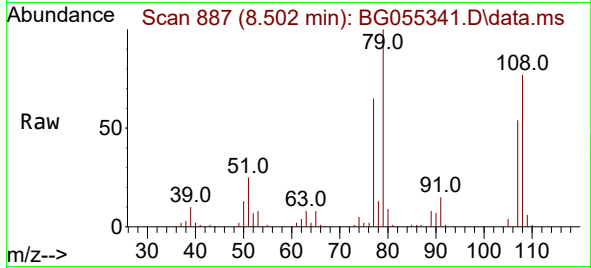




#15
 Benzyl Alcohol
 Concen: 40.954 ng
 RT: 8.502 min Scan# 81
 Delta R.T. -0.003 min
 Lab File: BG055341.D
 Acq: 28 Oct 2022 14:31

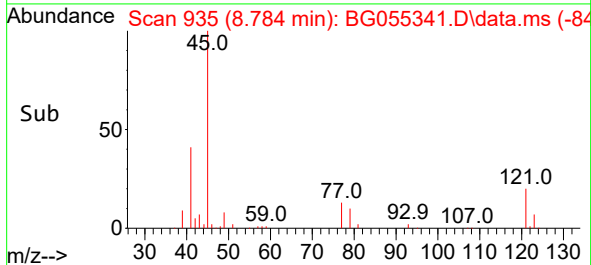
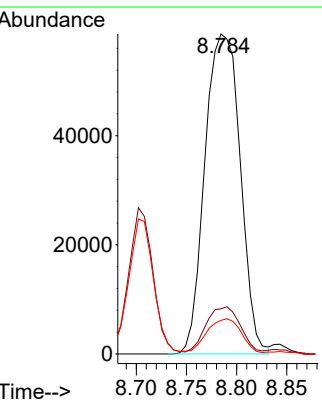
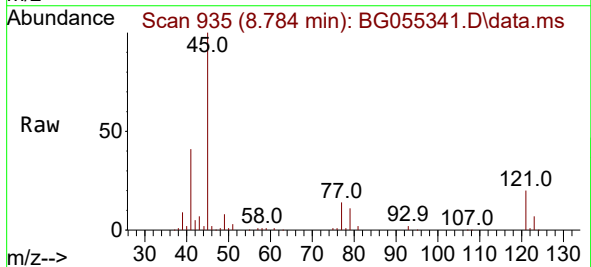
Instrument :
 BNA_G
 ClientSampleId :
 PB148557BS

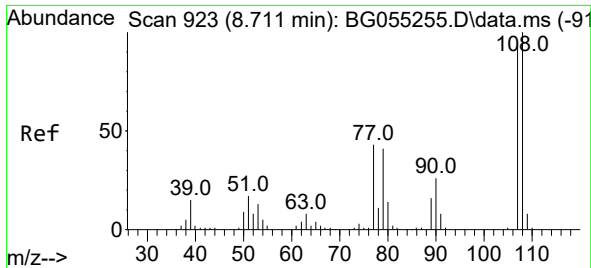
Tgt Ion	Resp	Lower	Upper
79	100		
108	76.7	61.3	91.9
77	64.8	52.7	79.1



#16
 2,2'-oxybis(1-Chloropropane)
 Concen: 35.664 ng
 RT: 8.784 min Scan# 935
 Delta R.T. -0.015 min
 Lab File: BG055341.D
 Acq: 28 Oct 2022 14:31

Tgt Ion	Resp	Lower	Upper
45	100		
77	14.1	0.0	32.9
79	10.5	0.0	29.6





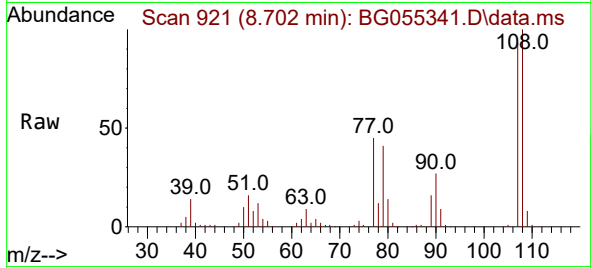
#17
 2-Methylphenol
 Concen: 42.221 ng
 RT: 8.702 min Scan# 91
 Delta R.T. -0.009 min
 Lab File: BG055341.D
 Acq: 28 Oct 2022 14:31

Instrument :

BNA_G

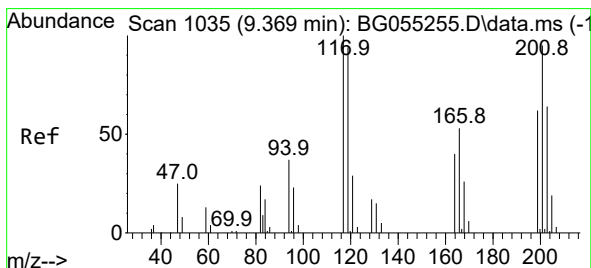
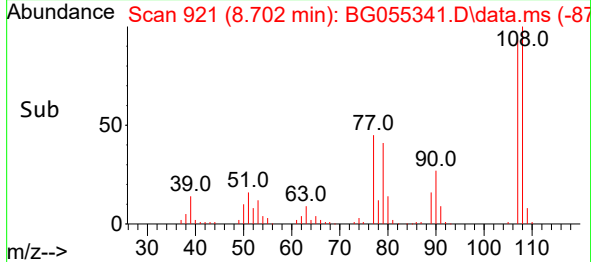
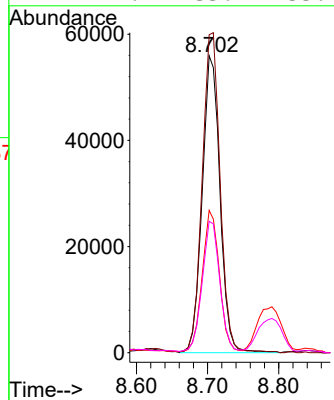
ClientSampleId :

PB148557BS



Tgt Ion:107 Resp: 97394

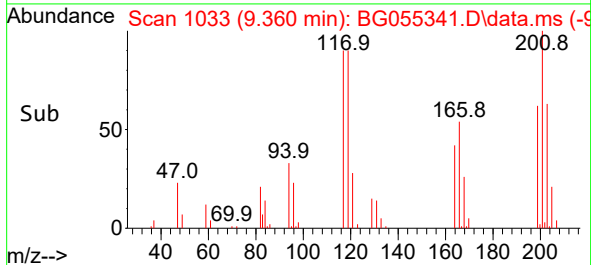
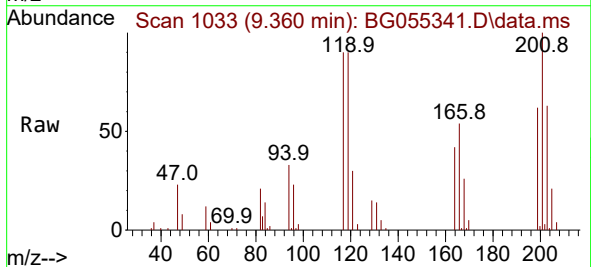
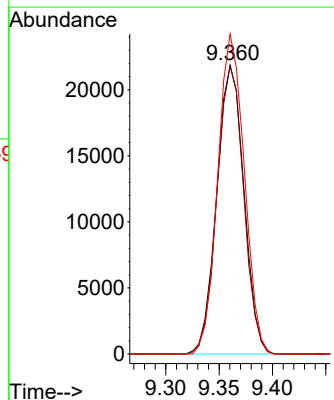
Ion	Ratio	Lower	Upper
107	100		
108	107.1	86.0	129.0
77	47.9	37.4	56.0
79	44.2	35.4	53.2

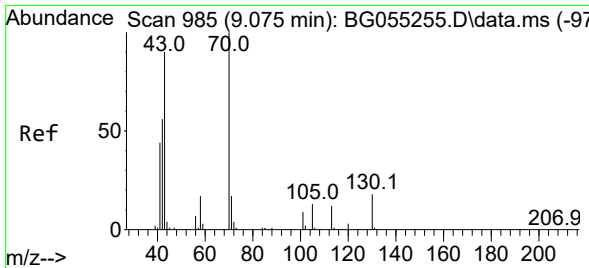


#18
 Hexachloroethane
 Concen: 41.680 ng
 RT: 9.360 min Scan# 1033
 Delta R.T. -0.009 min
 Lab File: BG055341.D
 Acq: 28 Oct 2022 14:31

Tgt Ion:117 Resp: 38651

Ion	Ratio	Lower	Upper
117	100		
119	99.8	75.4	113.2
201	110.8	75.8	113.8





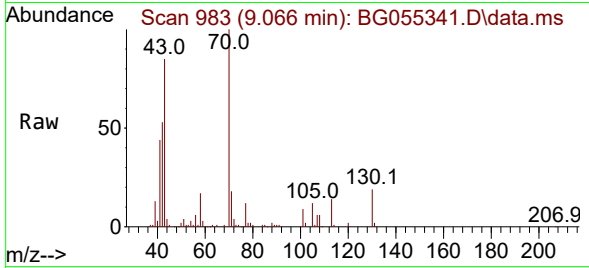
#19
 n-Nitroso-di-n-propylamine
 Concen: 35.564 ng
 RT: 9.066 min Scan# 91
 Delta R.T. -0.009 min
 Lab File: BG055341.D
 Acq: 28 Oct 2022 14:31

Instrument :

BNA_G

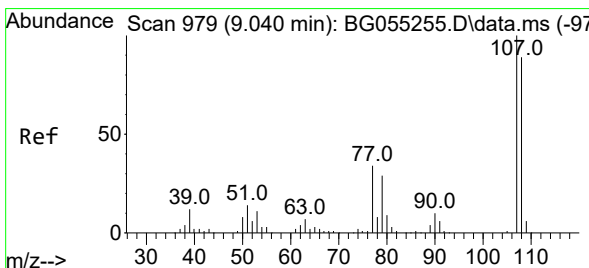
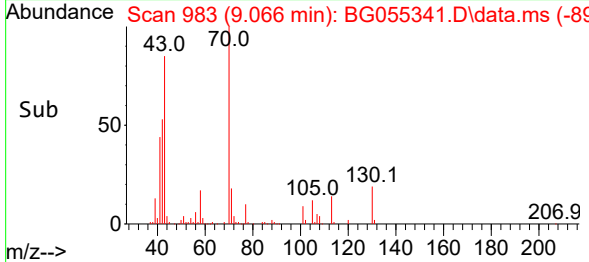
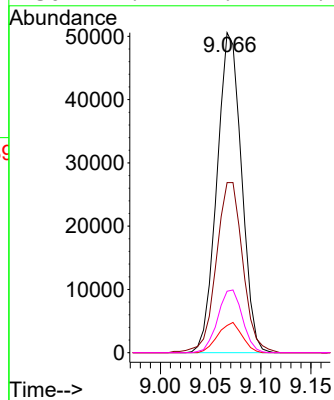
ClientSampleId :

PB148557BS



Tgt Ion: 70 Resp: 85999

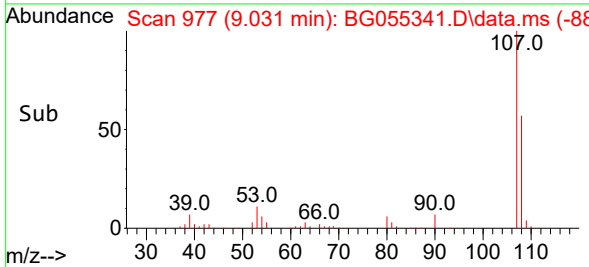
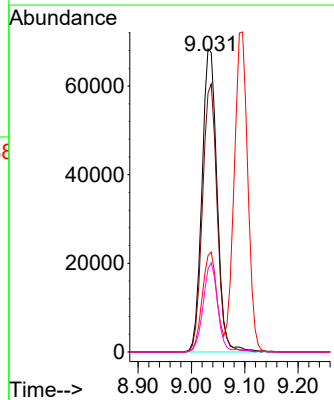
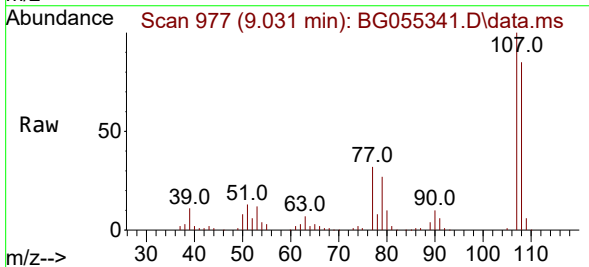
Ion	Ratio	Lower	Upper
70	100		
42	53.2	45.8	68.6
101	8.5	7.4	11.0
130	19.2	14.1	21.1

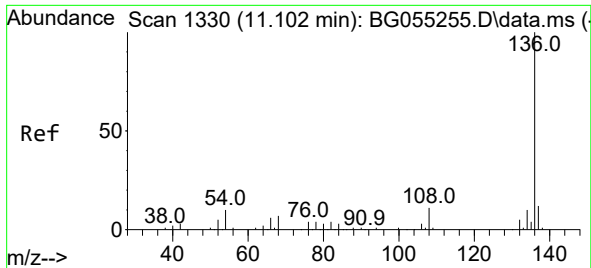


#20
 3+4-Methylphenols
 Concen: 40.660 ng
 RT: 9.031 min Scan# 977
 Delta R.T. -0.009 min
 Lab File: BG055341.D
 Acq: 28 Oct 2022 14:31

Tgt Ion: 107 Resp: 134337

Ion	Ratio	Lower	Upper
107	100		
108	85.4	68.5	108.5
77	31.8	14.0	54.0
79	27.4	8.9	48.9





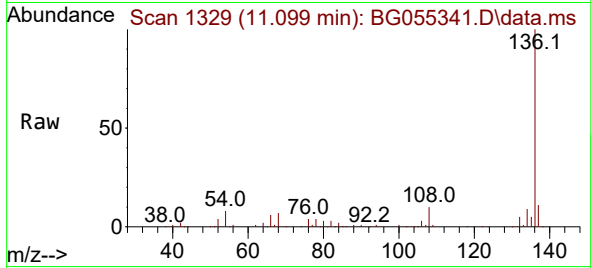
#21
 Naphthalene-d8
 Concen: 20.000 ng
 RT: 11.099 min Scan# 11
 Delta R.T. -0.003 min
 Lab File: BG055341.D
 Acq: 28 Oct 2022 14:31

Instrument :

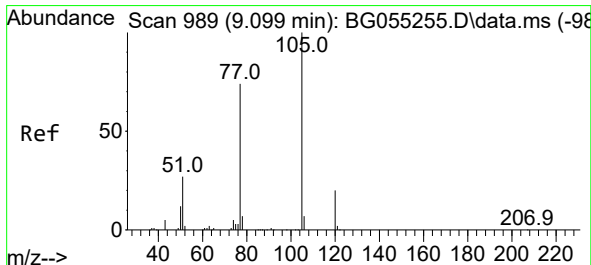
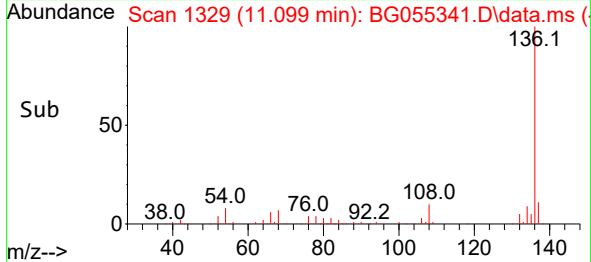
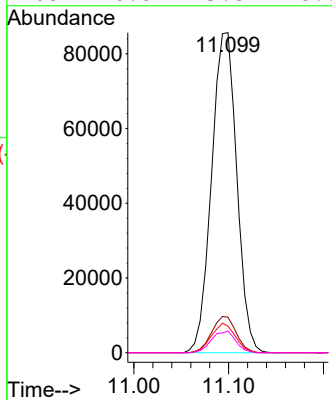
BNA_G

ClientSampleId :

PB148557BS

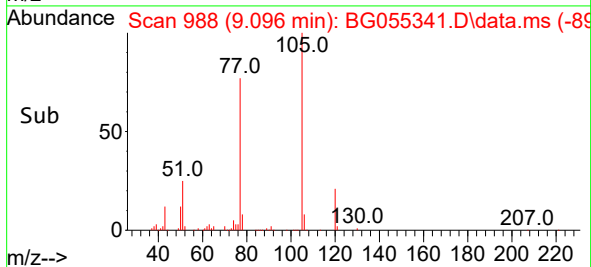
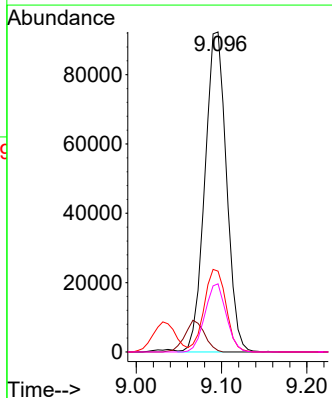
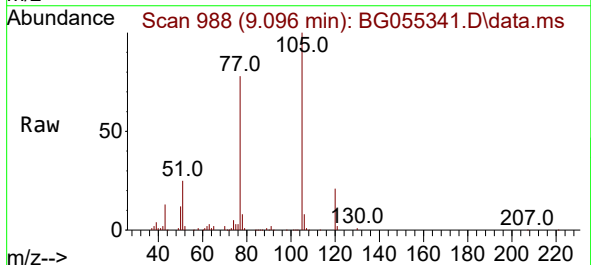


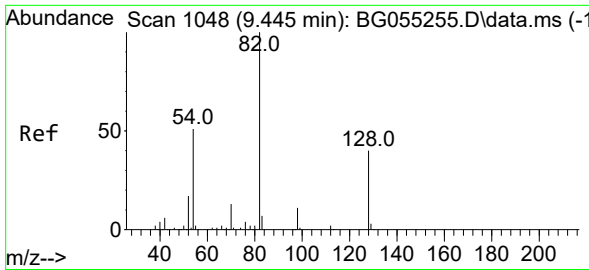
Tgt Ion:136 Resp: 158246
 Ion Ratio Lower Upper
 136 100
 137 11.1 9.2 13.8
 54 8.3 7.8 11.8
 68 6.8 5.8 8.6



#22
 Acetophenone
 Concen: 40.103 ng
 RT: 9.096 min Scan# 988
 Delta R.T. -0.003 min
 Lab File: BG055341.D
 Acq: 28 Oct 2022 14:31

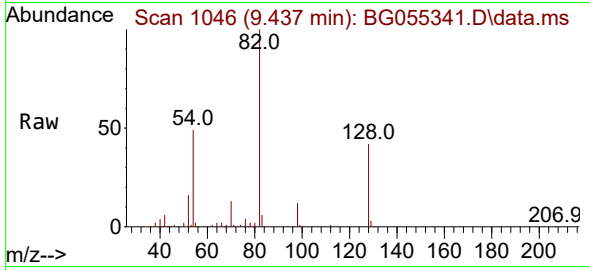
Tgt Ion:105 Resp: 162244
 Ion Ratio Lower Upper
 105 100
 71 0.5 0.8 1.2#
 51 25.2 22.9 34.3
 120 21.3 16.2 24.4



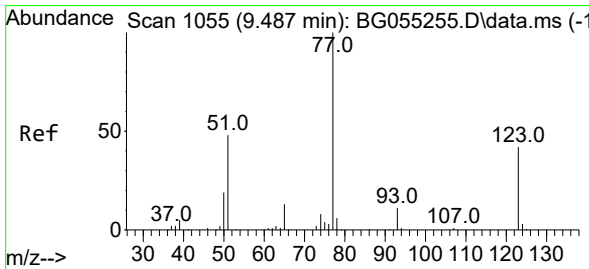
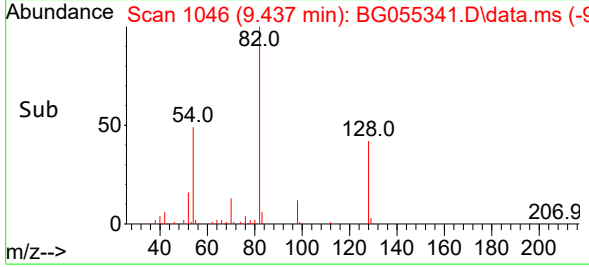
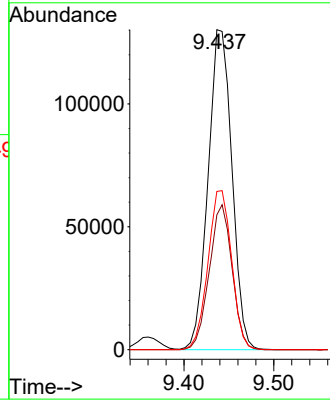


#23
 Nitrobenzene-d5
 Concen: 77.511 ng
 RT: 9.437 min Scan# 1046
 Delta R.T. -0.009 min
 Lab File: BG055341.D
 Acq: 28 Oct 2022 14:31

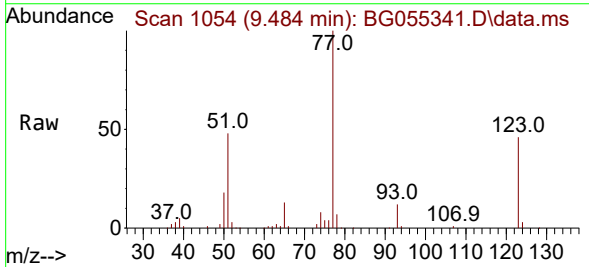
Instrument :
 BNA_G
 ClientSampleId :
 PB148557BS



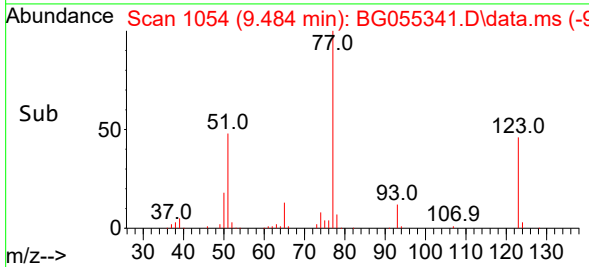
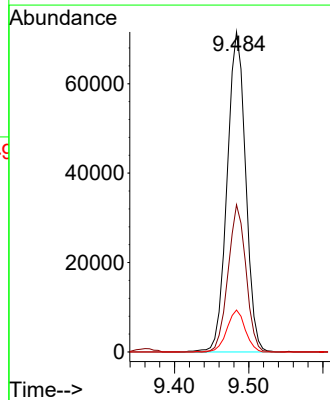
Tgt Ion: 82 Resp: 240208
 Ion Ratio Lower Upper
 82 100
 128 42.1 32.0 48.0
 54 49.4 40.9 61.3

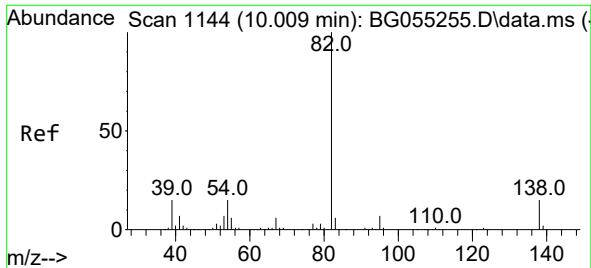


#24
 Nitrobenzene
 Concen: 38.360 ng
 RT: 9.484 min Scan# 1054
 Delta R.T. -0.003 min
 Lab File: BG055341.D
 Acq: 28 Oct 2022 14:31



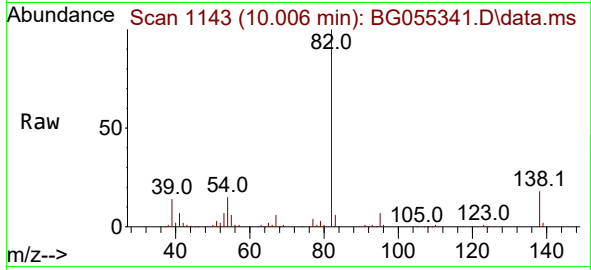
Tgt Ion: 77 Resp: 123782
 Ion Ratio Lower Upper
 77 100
 123 46.0 33.6 50.4
 65 13.1 10.2 15.4



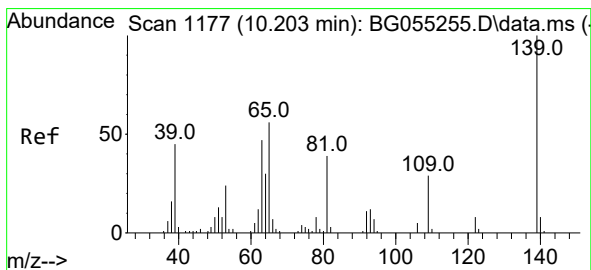
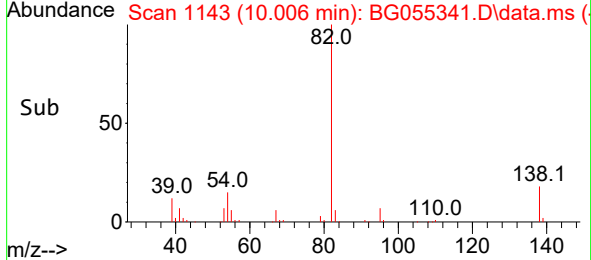
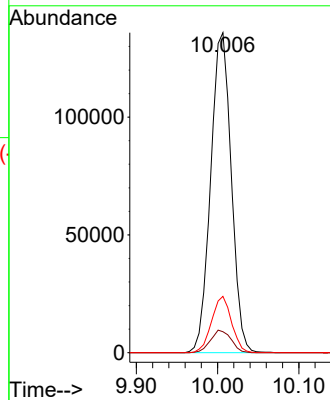


#25
 Isophorone
 Concen: 38.257 ng
 RT: 10.006 min Scan# 1143
 Delta R.T. -0.003 min
 Lab File: BG055341.D
 Acq: 28 Oct 2022 14:31

Instrument :
 BNA_G
 ClientSampleId :
 PB148557BS

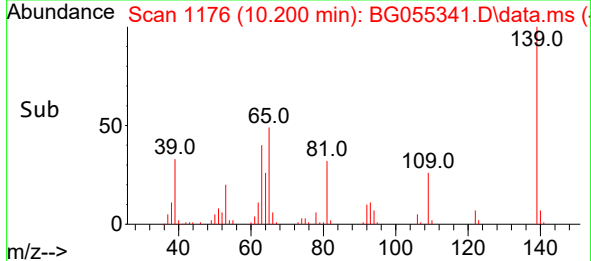
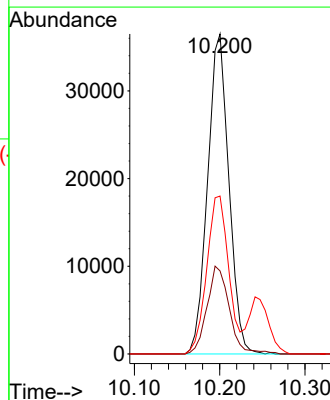
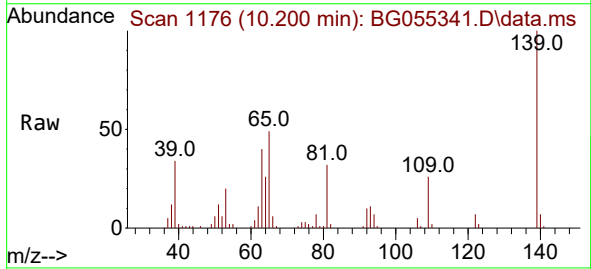


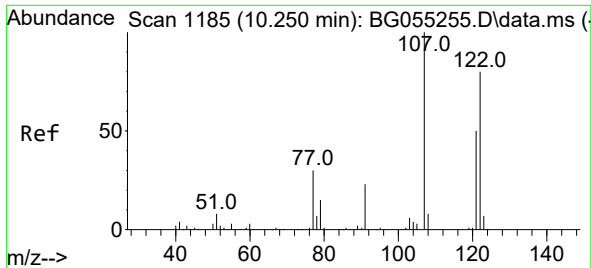
Tgt Ion: 82 Resp: 239471
 Ion Ratio Lower Upper
 82 100
 95 6.6 5.2 7.8
 138 17.6 12.2 18.4



#26
 2-Nitrophenol
 Concen: 44.655 ng
 RT: 10.200 min Scan# 1176
 Delta R.T. -0.003 min
 Lab File: BG055341.D
 Acq: 28 Oct 2022 14:31

Tgt Ion:139 Resp: 63101
 Ion Ratio Lower Upper
 139 100
 109 26.0 23.3 34.9
 65 49.4 45.2 67.8



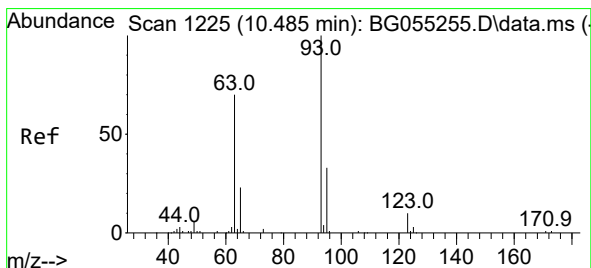
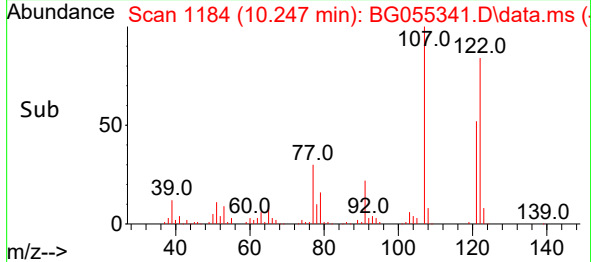
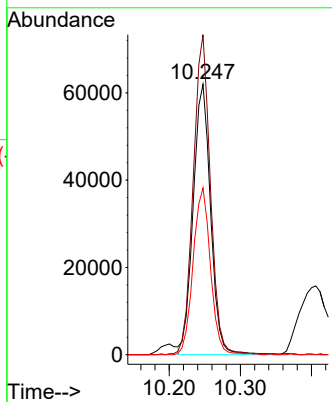
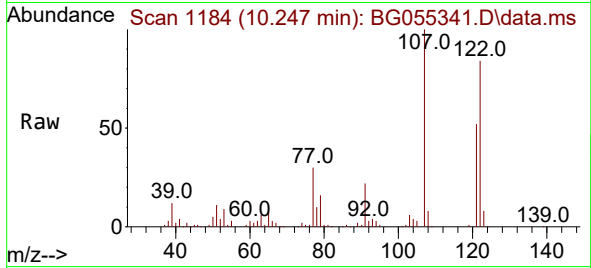


#27
 2,4-Dimethylphenol
 Concen: 47.993 ng
 RT: 10.247 min Scan# 1184
 Delta R.T. -0.003 min
 Lab File: BG055341.D
 Acq: 28 Oct 2022 14:31

Instrument : BNA_G
 ClientSampleId : PB148557BS

Tgt Ion:122 Resp: 105876

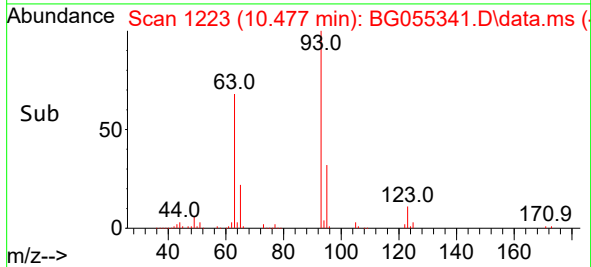
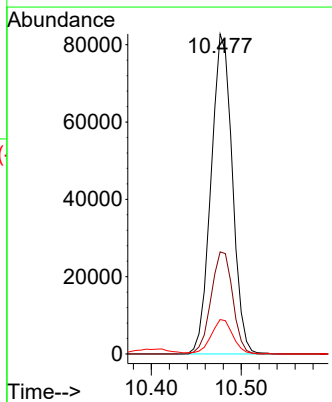
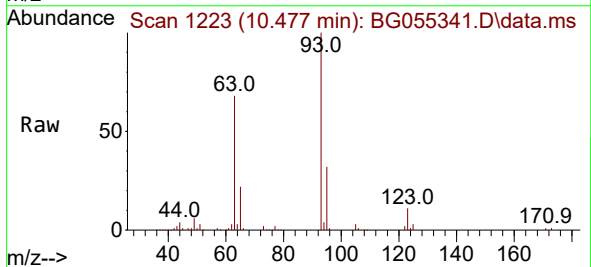
Ion	Ratio	Lower	Upper
122	100		
107	118.4	97.3	145.9
121	61.7	48.5	72.7

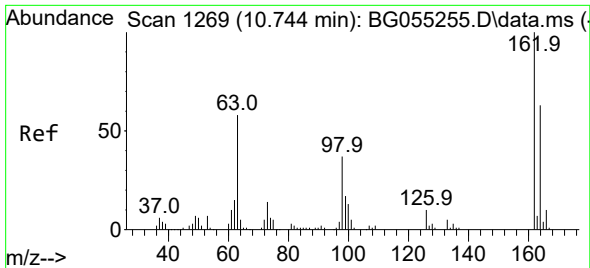


#28
 bis(2-Chloroethoxy)methane
 Concen: 43.022 ng
 RT: 10.477 min Scan# 1223
 Delta R.T. -0.009 min
 Lab File: BG055341.D
 Acq: 28 Oct 2022 14:31

Tgt Ion: 93 Resp: 135968

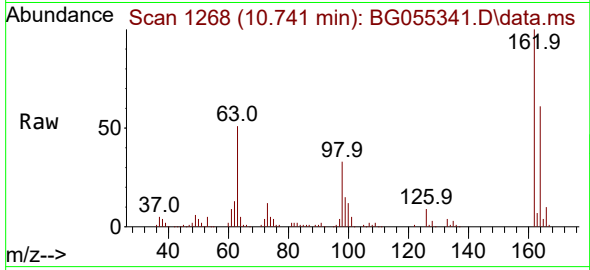
Ion	Ratio	Lower	Upper
93	100		
95	31.9	26.3	39.5
123	10.7	7.9	11.9



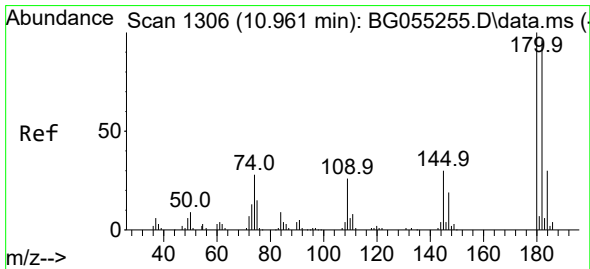
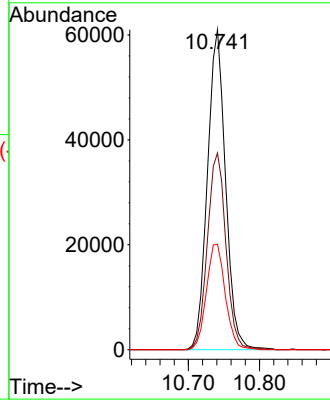
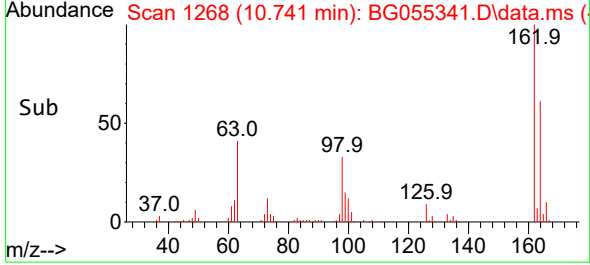


#29
 2,4-Dichlorophenol
 Concen: 45.627 ng
 RT: 10.741 min Scan# 11
 Delta R.T. -0.003 min
 Lab File: BG055341.D
 Acq: 28 Oct 2022 14:31

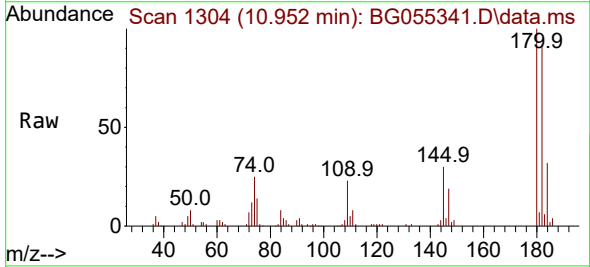
Instrument :
 BNA_G
 ClientSampleId :
 PB148557BS



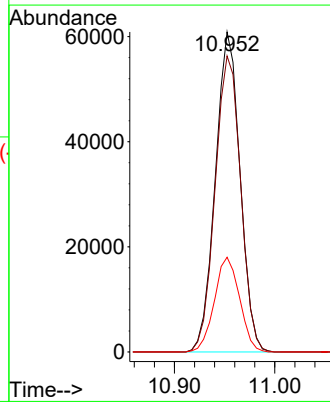
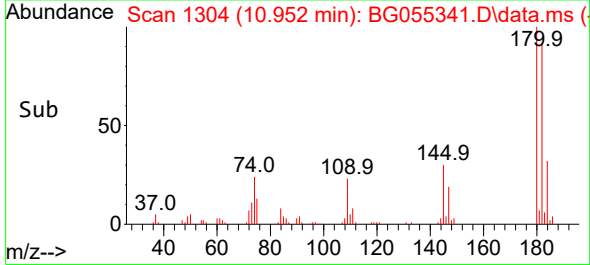
Tgt Ion:162 Resp: 107981
 Ion Ratio Lower Upper
 162 100
 164 61.4 42.9 82.9
 98 33.0 17.3 57.3

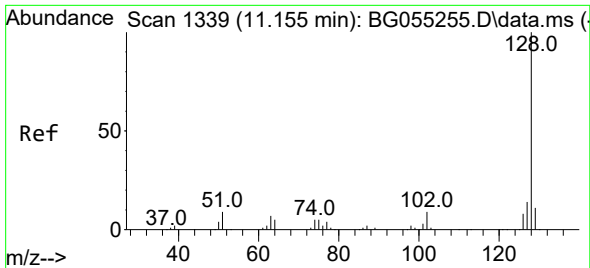


#30
 1,2,4-Trichlorobenzene
 Concen: 43.079 ng
 RT: 10.952 min Scan# 1304
 Delta R.T. -0.009 min
 Lab File: BG055341.D
 Acq: 28 Oct 2022 14:31



Tgt Ion:180 Resp: 104050
 Ion Ratio Lower Upper
 180 100
 182 92.5 76.4 114.6
 145 29.6 24.4 36.6

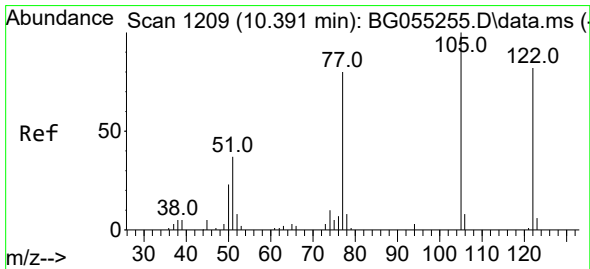
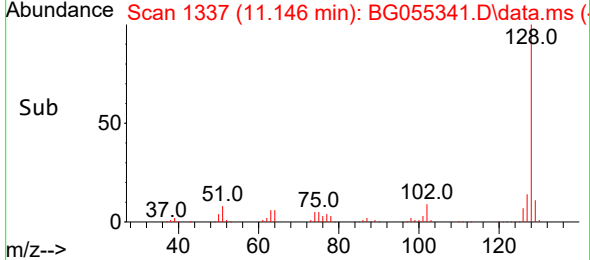
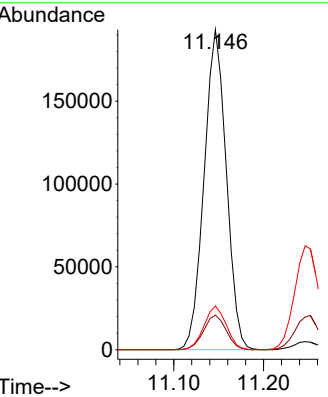
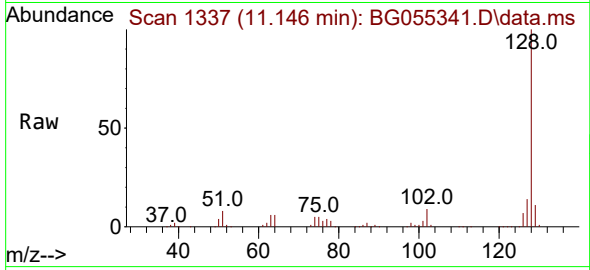




#31
 Naphthalene
 Concen: 39.210 ng
 RT: 11.146 min Scan# 1111
 Delta R.T. -0.009 min
 Lab File: BG055341.D
 Acq: 28 Oct 2022 14:31

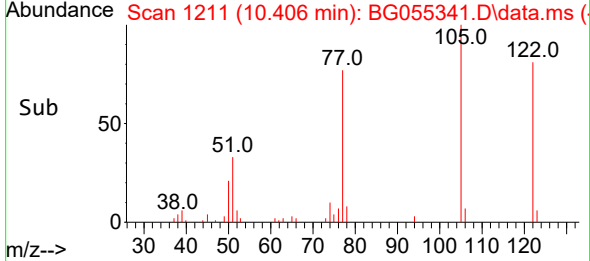
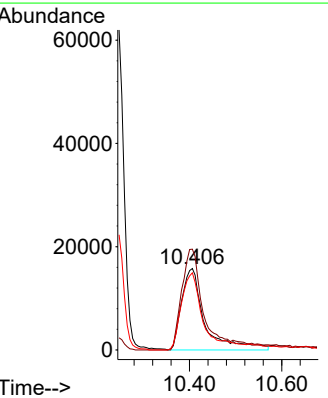
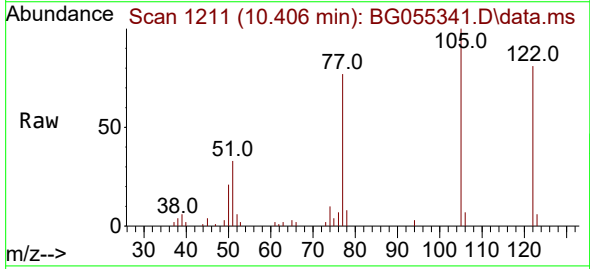
Instrument :
 BNA_G
 ClientSampleId :
 PB148557BS

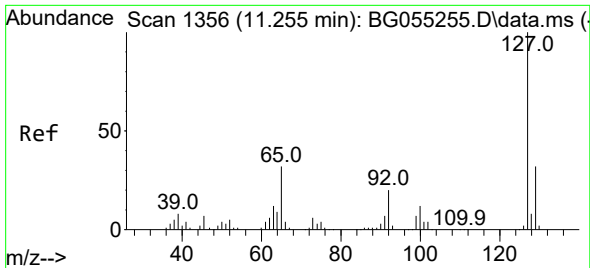
Tgt Ion:128 Resp: 331009
 Ion Ratio Lower Upper
 128 100
 129 10.8 9.0 13.6
 127 13.6 11.1 16.7



#32
 Benzoic acid
 Concen: 34.341 ng
 RT: 10.406 min Scan# 1211
 Delta R.T. 0.015 min
 Lab File: BG055341.D
 Acq: 28 Oct 2022 14:31

Tgt Ion:122 Resp: 55083
 Ion Ratio Lower Upper
 122 100
 105 123.8 101.3 141.3
 77 94.7 76.9 116.9



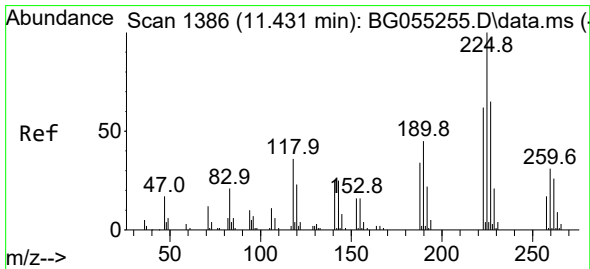
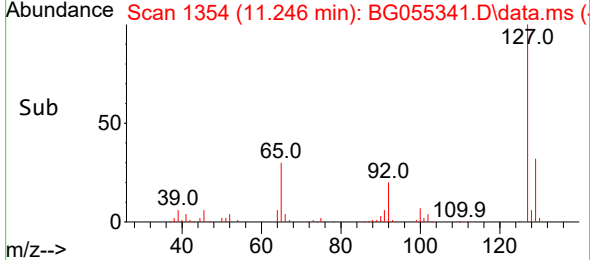
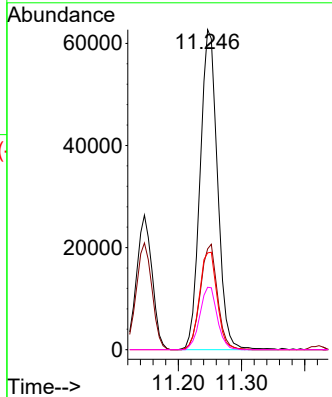
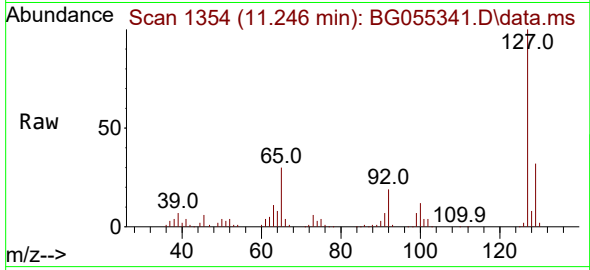


#33
 4-Chloroaniline
 Concen: 33.192 ng
 RT: 11.246 min Scan# 11
 Delta R.T. -0.009 min
 Lab File: BG055341.D
 Acq: 28 Oct 2022 14:31

Instrument : BNA_G
 ClientSampleId : PB148557BS

Tgt Ion:127 Resp: 119794

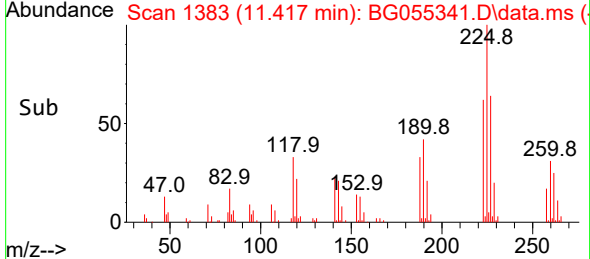
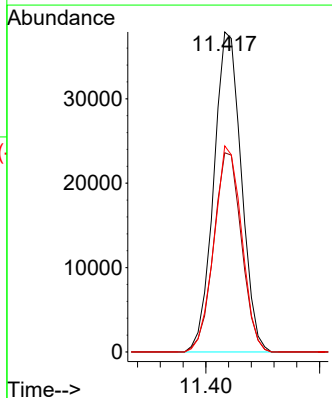
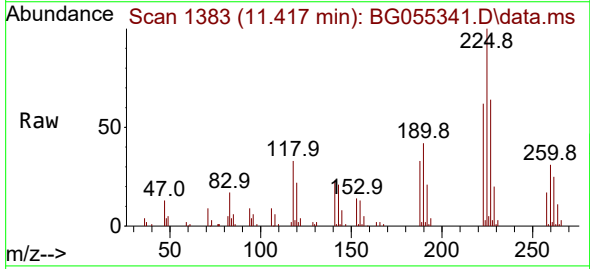
Ion	Ratio	Lower	Upper
127	100		
129	31.5	25.4	38.0
65	30.2	25.5	38.3
92	19.5	16.2	24.2

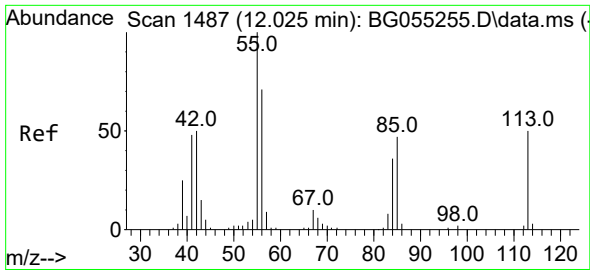


#34
 Hexachlorobutadiene
 Concen: 46.195 ng
 RT: 11.417 min Scan# 1383
 Delta R.T. -0.015 min
 Lab File: BG055341.D
 Acq: 28 Oct 2022 14:31

Tgt Ion:225 Resp: 63752

Ion	Ratio	Lower	Upper
225	100		
223	62.2	49.4	74.2
227	64.4	52.4	78.6

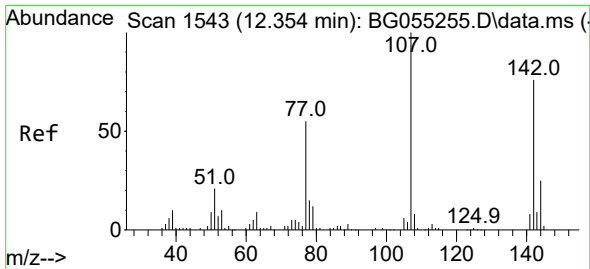
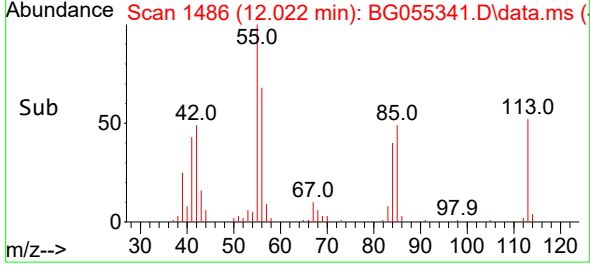
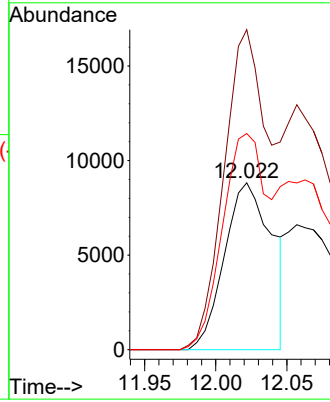
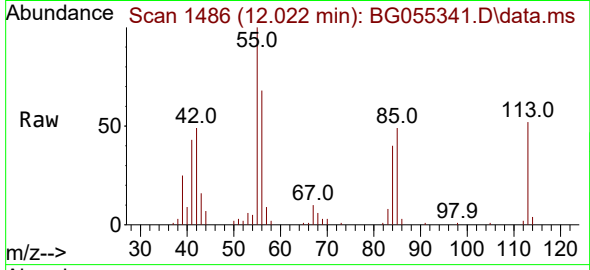




#35
 Caprolactam
 Concen: 18.668 ng
 RT: 12.022 min Scan# 1486
 Delta R.T. -0.003 min
 Lab File: BG055341.D
 Acq: 28 Oct 2022 14:31

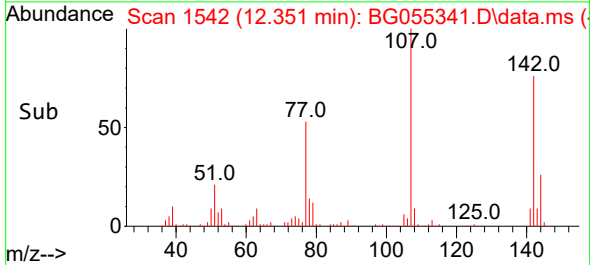
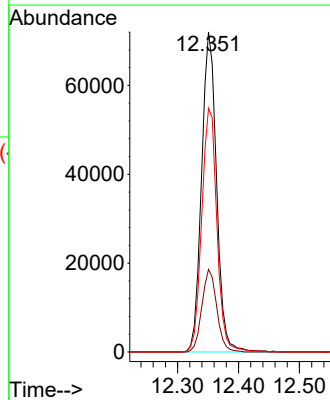
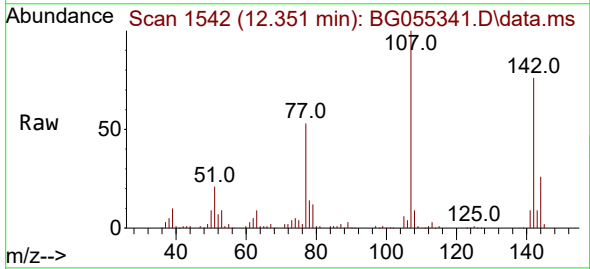
Instrument :
 BNA_G
 ClientSampleId :
 PB148557BS

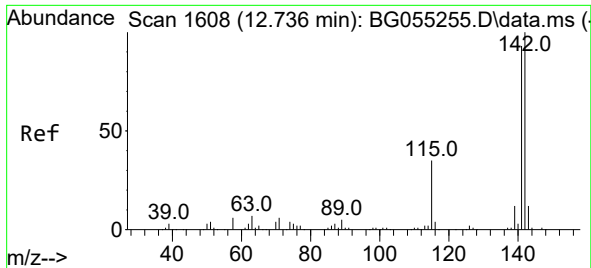
Tgt Ion:113 Resp: 20504
 Ion Ratio Lower Upper
 113 100
 55 191.7 178.2 218.2
 56 129.4 121.0 161.0



#36
 4-Chloro-3-methylphenol
 Concen: 41.250 ng
 RT: 12.351 min Scan# 1542
 Delta R.T. -0.003 min
 Lab File: BG055341.D
 Acq: 28 Oct 2022 14:31

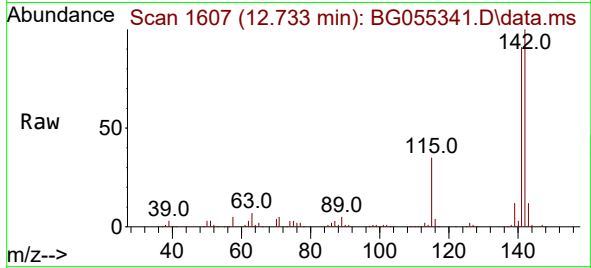
Tgt Ion:107 Resp: 122837
 Ion Ratio Lower Upper
 107 100
 144 25.8 20.3 30.5
 142 76.1 60.5 90.7



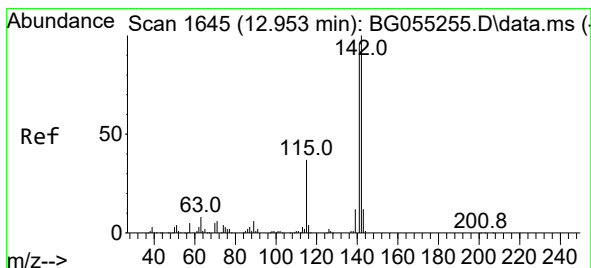
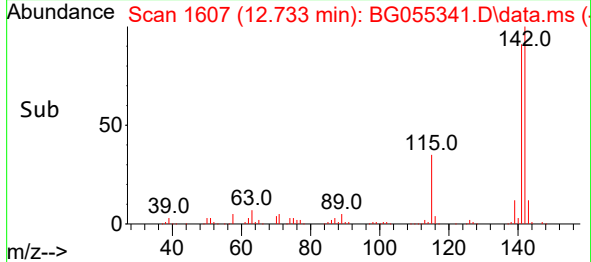
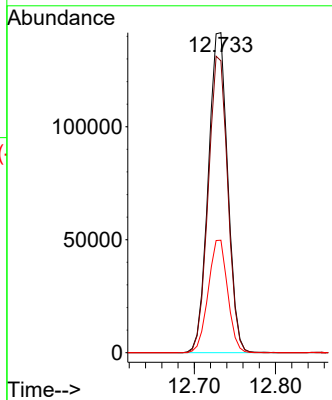


#37
 2-Methylnaphthalene
 Concen: 38.771 ng
 RT: 12.733 min Scan# 1607
 Delta R.T. -0.003 min
 Lab File: BG055341.D
 Acq: 28 Oct 2022 14:31

Instrument :
 BNA_G
 ClientSampleId :
 PB148557BS

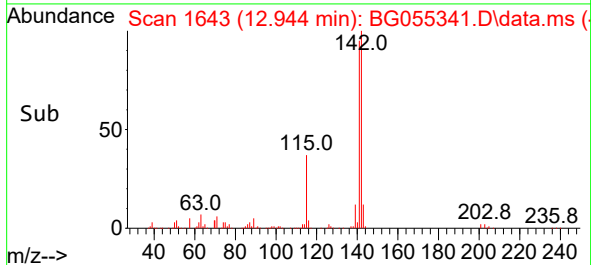
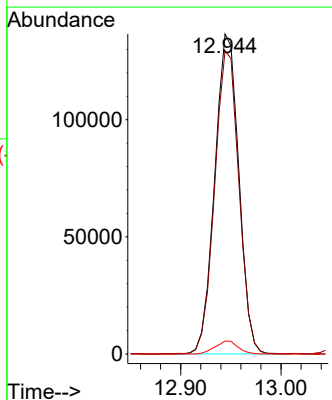
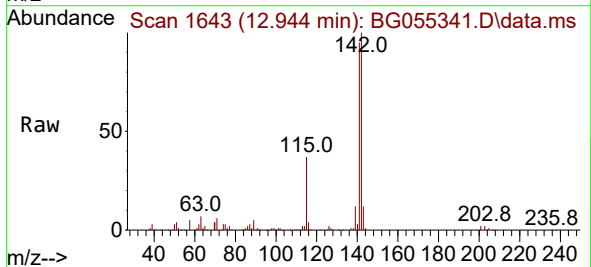


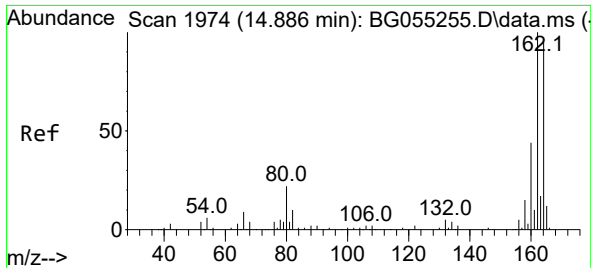
Tgt Ion:142 Resp: 235977
 Ion Ratio Lower Upper
 142 100
 141 91.2 74.0 111.0
 115 35.2 28.3 42.5



#38
 1-Methylnaphthalene
 Concen: 37.876 ng
 RT: 12.944 min Scan# 1643
 Delta R.T. -0.009 min
 Lab File: BG055341.D
 Acq: 28 Oct 2022 14:31

Tgt Ion:142 Resp: 227432
 Ion Ratio Lower Upper
 142 100
 141 94.8 77.1 115.7
 116 4.0 3.0 4.6

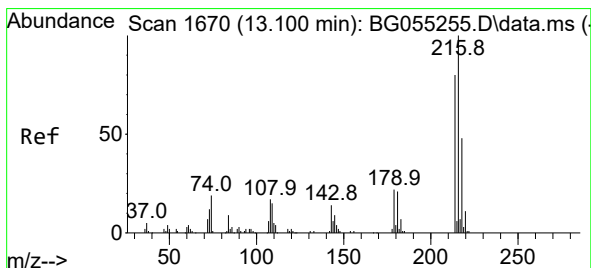
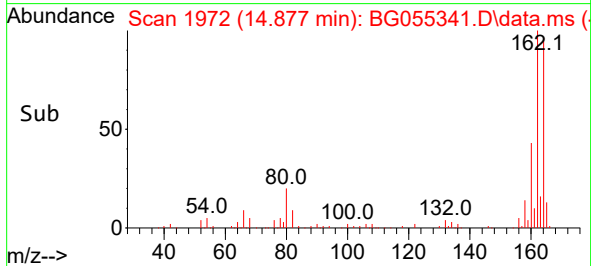
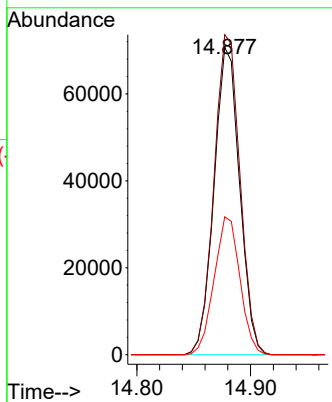
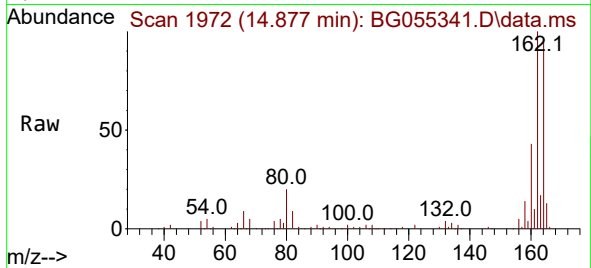




#39
 Acenaphthene-d10
 Concen: 20.000 ng
 RT: 14.877 min Scan# 1974
 Delta R.T. -0.009 min
 Lab File: BG055341.D
 Acq: 28 Oct 2022 14:31

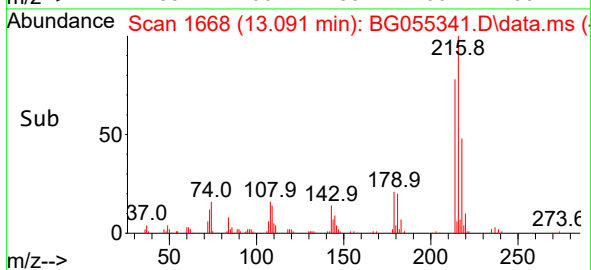
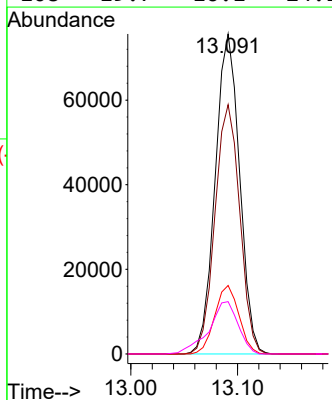
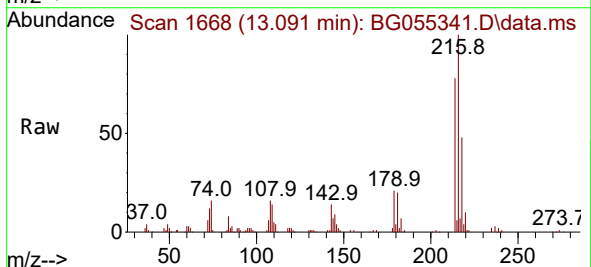
Instrument :
 BNA_G
 ClientSampleId :
 PB148557BS

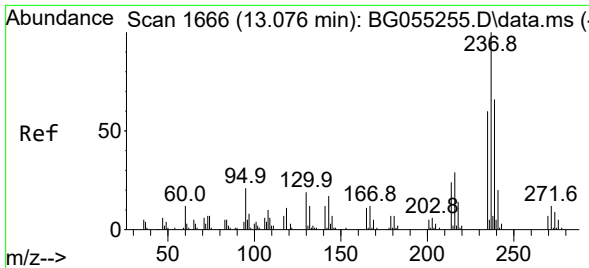
Tgt Ion:164 Resp: 110471
 Ion Ratio Lower Upper
 164 100
 162 104.1 84.0 126.0
 160 44.9 36.7 55.1



#40
 1,2,4,5-Tetrachlorobenzene
 Concen: 44.963 ng
 RT: 13.091 min Scan# 1668
 Delta R.T. -0.009 min
 Lab File: BG055341.D
 Acq: 28 Oct 2022 14:31

Tgt Ion:216 Resp: 119802
 Ion Ratio Lower Upper
 216 100
 214 79.1 63.4 95.2
 179 21.3 17.2 25.8
 108 19.7 16.1 24.1





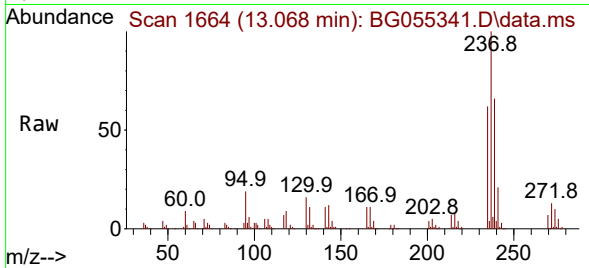
#41
 Hexachlorocyclopentadiene
 Concen: 102.264 ng
 RT: 13.068 min Scan# 1664
 Delta R.T. -0.008 min
 Lab File: BG055341.D
 Acq: 28 Oct 2022 14:31

Instrument :

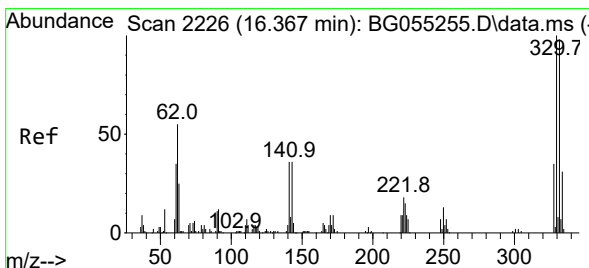
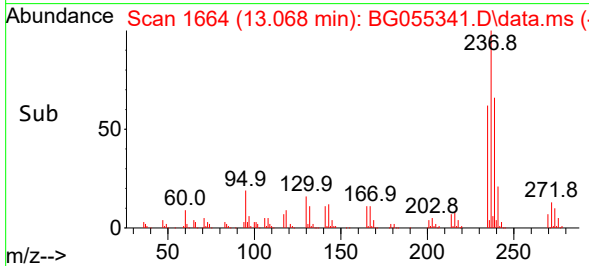
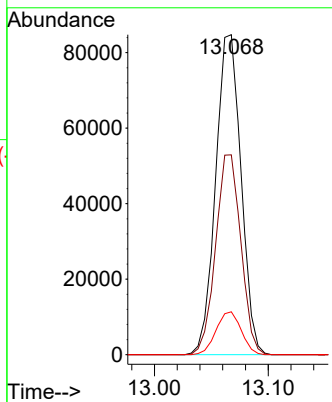
BNA_G

ClientSampleId :

PB148557BS

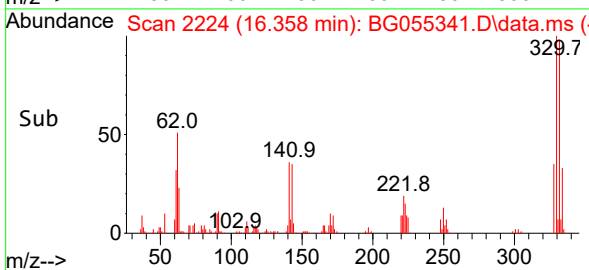
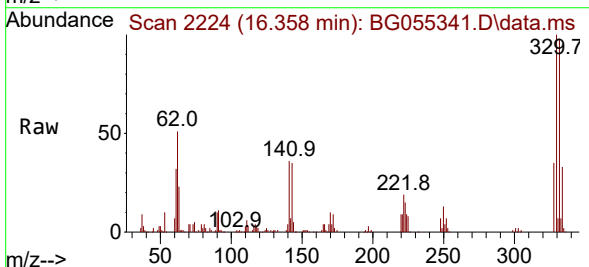
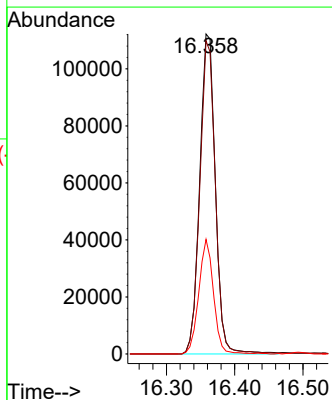


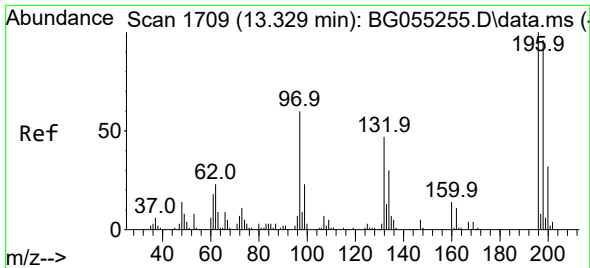
Tgt Ion:237 Resp: 131413
 Ion Ratio Lower Upper
 237 100
 235 62.4 40.4 80.4
 272 13.4 0.0 31.7



#42
 2,4,6-Tribromophenol
 Concen: 149.112 ng
 RT: 16.358 min Scan# 2224
 Delta R.T. -0.009 min
 Lab File: BG055341.D
 Acq: 28 Oct 2022 14:31

Tgt Ion:330 Resp: 179071
 Ion Ratio Lower Upper
 330 100
 332 97.2 77.4 116.0
 141 33.6 29.8 44.8

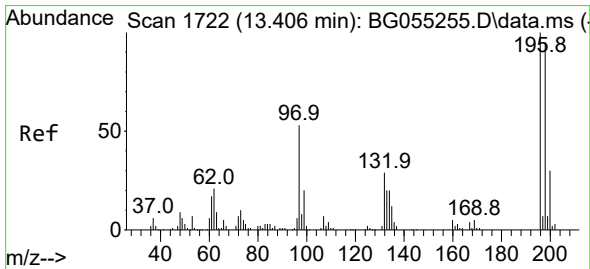
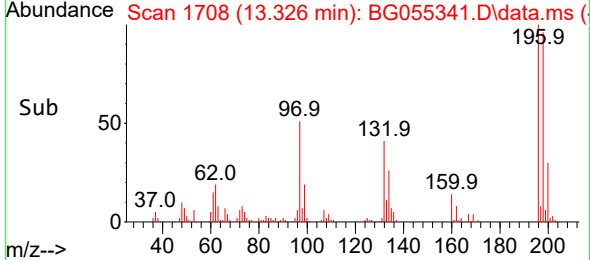
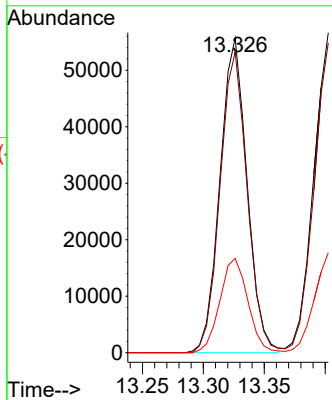
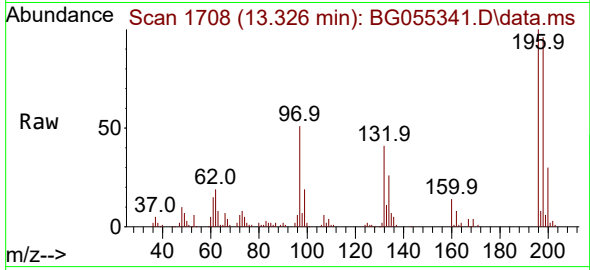




#43
 2,4,6-Trichlorophenol
 Concen: 43.818 ng
 RT: 13.326 min Scan# 1708
 Delta R.T. -0.003 min
 Lab File: BG055341.D
 Acq: 28 Oct 2022 14:31

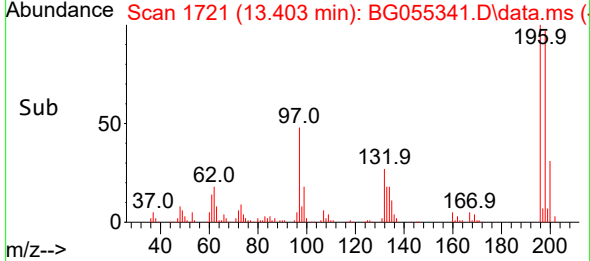
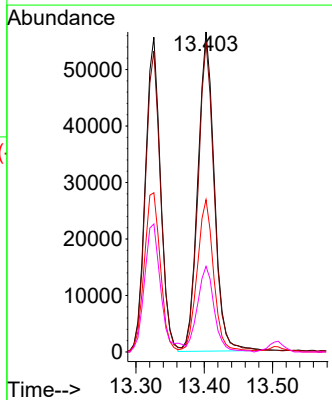
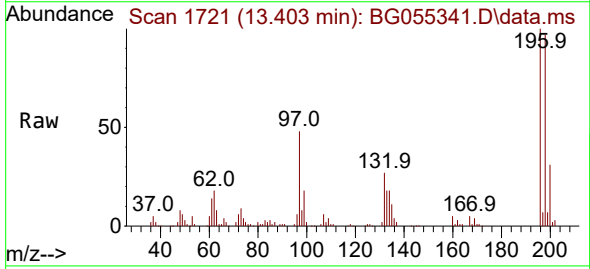
Instrument : BNA_G
 ClientSampleId : PB148557BS

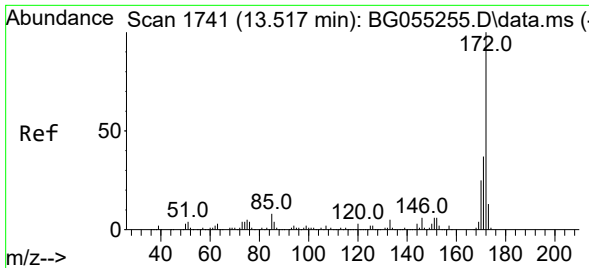
Tgt Ion	Resp	Lower	Upper
196	100		
198	95.6	76.5	114.7
200	29.9	25.8	38.8



#44
 2,4,5-Trichlorophenol
 Concen: 43.574 ng
 RT: 13.403 min Scan# 1721
 Delta R.T. -0.003 min
 Lab File: BG055341.D
 Acq: 28 Oct 2022 14:31

Tgt Ion	Resp	Lower	Upper
196	100		
198	96.8	76.2	114.2
97	47.6	42.3	63.5
132	26.8	23.2	34.8



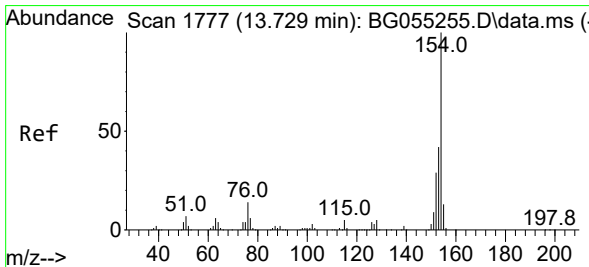
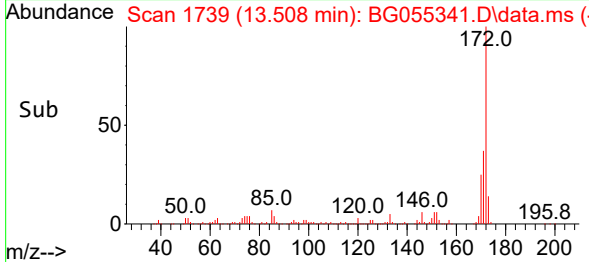
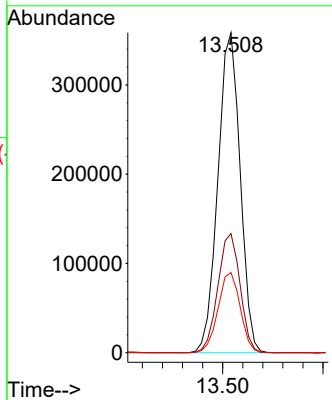
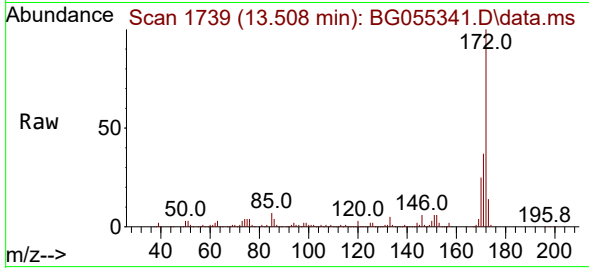


#45
 2-Fluorobiphenyl
 Concen: 81.633 ng
 RT: 13.508 min Scan# 1739
 Delta R.T. -0.009 min
 Lab File: BG055341.D
 Acq: 28 Oct 2022 14:31

Instrument : BNA_G
 ClientSampleId : PB148557BS

Tgt Ion:172 Resp: 550971

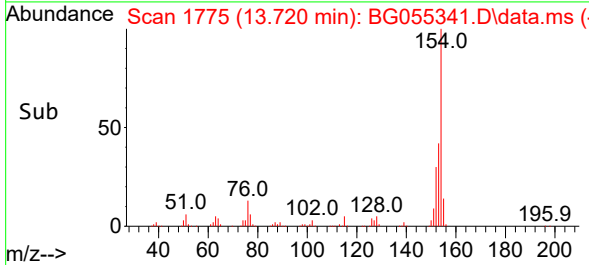
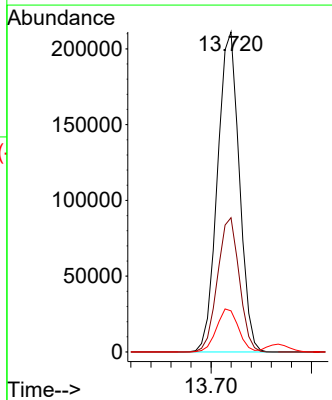
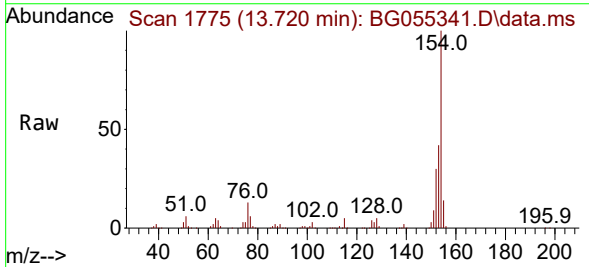
Ion	Ratio	Lower	Upper
172	100		
171	37.2	29.7	44.5
170	25.1	20.2	30.2

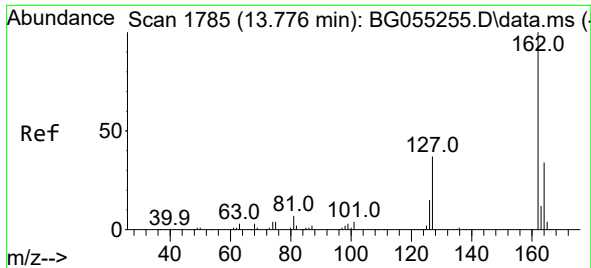


#46
 1,1'-Biphenyl
 Concen: 41.949 ng
 RT: 13.720 min Scan# 1775
 Delta R.T. -0.009 min
 Lab File: BG055341.D
 Acq: 28 Oct 2022 14:31

Tgt Ion:154 Resp: 317842

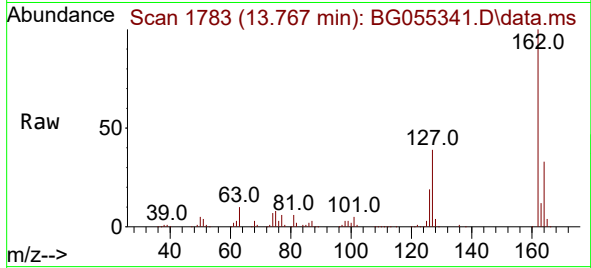
Ion	Ratio	Lower	Upper
154	100		
153	42.0	21.5	61.5
76	12.9	0.0	34.2



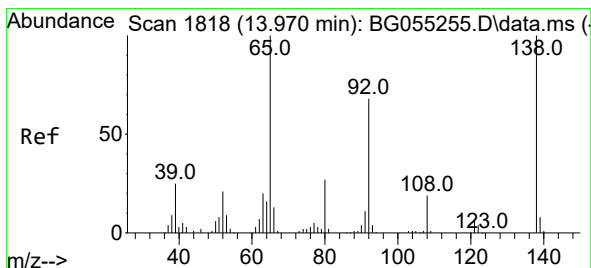
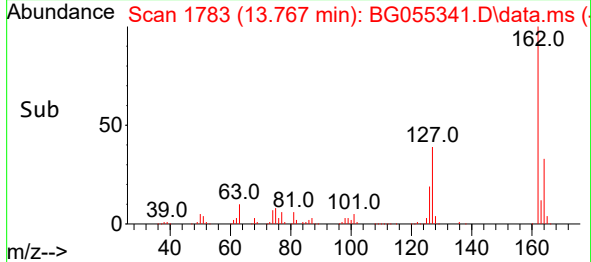
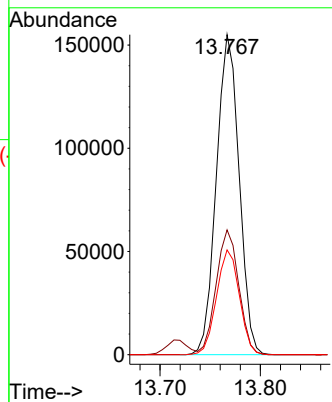


#47
 2-Chloronaphthalene
 Concen: 40.840 ng
 RT: 13.767 min Scan# 11
 Delta R.T. -0.009 min
 Lab File: BG055341.D
 Acq: 28 Oct 2022 14:31

Instrument :
 BNA_G
 ClientSampleId :
 PB148557BS

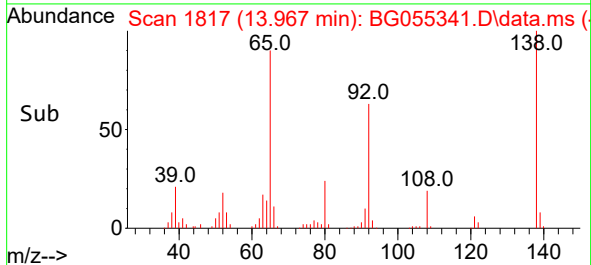
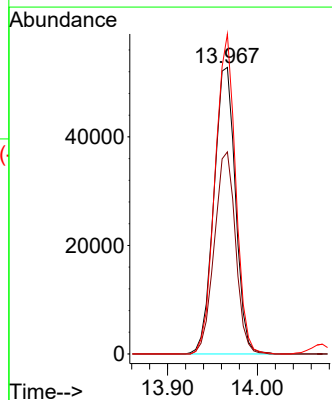
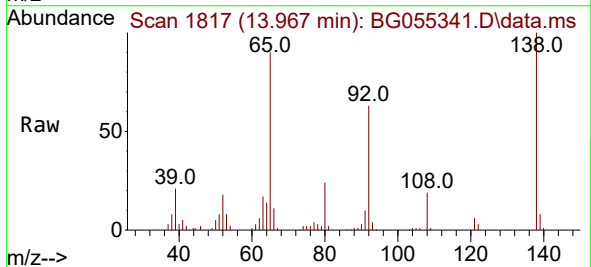


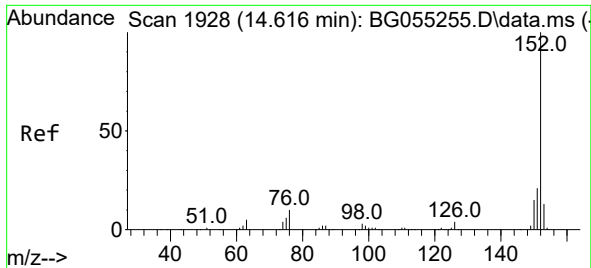
Tgt Ion:162 Resp: 244013
 Ion Ratio Lower Upper
 162 100
 127 39.0 33.0 49.6
 164 32.7 27.0 40.4



#48
 2-Nitroaniline
 Concen: 37.692 ng
 RT: 13.967 min Scan# 1817
 Delta R.T. -0.003 min
 Lab File: BG055341.D
 Acq: 28 Oct 2022 14:31

Tgt Ion: 65 Resp: 88072
 Ion Ratio Lower Upper
 65 100
 92 70.6 54.6 82.0
 138 111.7 80.2 120.4



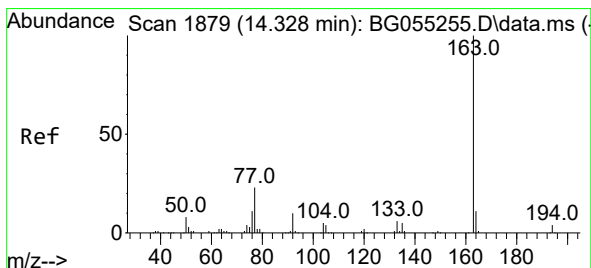
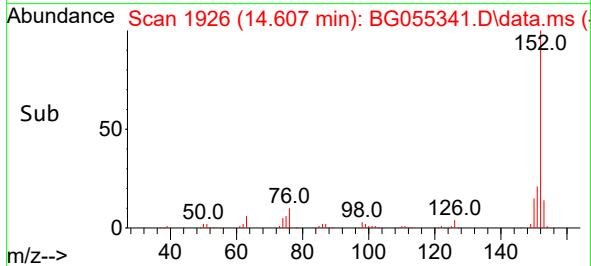
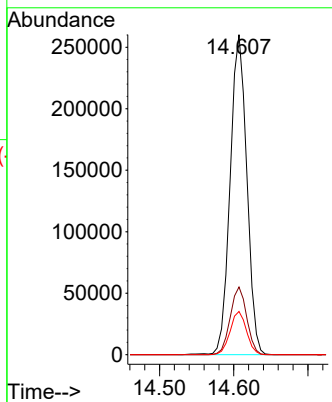
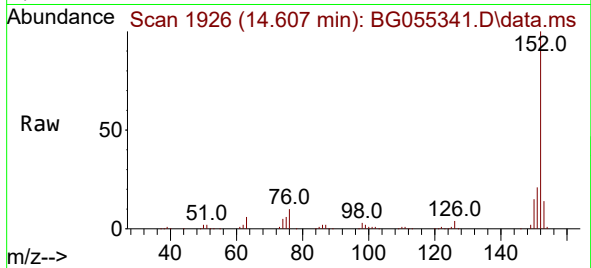


#49
 Acenaphthylene
 Concen: 39.315 ng
 RT: 14.607 min Scan# 1926
 Delta R.T. -0.009 min
 Lab File: BG055341.D
 Acq: 28 Oct 2022 14:31

Instrument : BNA_G
 ClientSampleId : PB148557BS

Tgt Ion:152 Resp: 405494

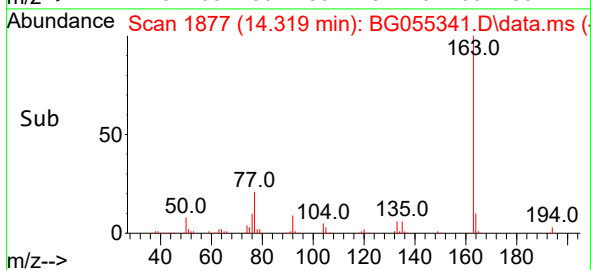
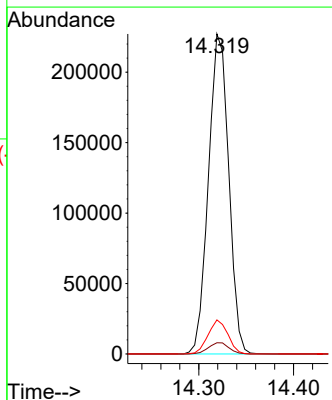
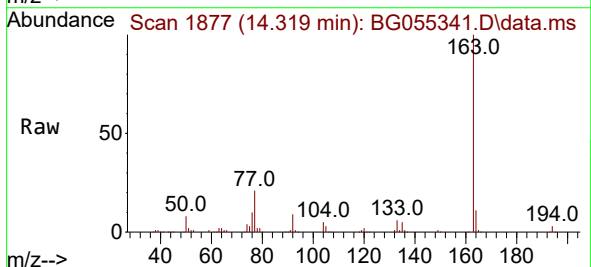
Ion	Ratio	Lower	Upper
152	100		
151	21.2	16.6	25.0
153	13.5	10.5	15.7

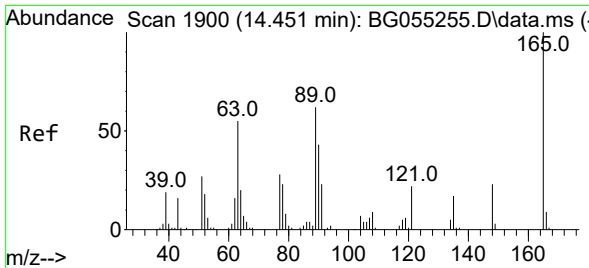


#50
 Dimethylphthalate
 Concen: 38.906 ng
 RT: 14.319 min Scan# 1877
 Delta R.T. -0.009 min
 Lab File: BG055341.D
 Acq: 28 Oct 2022 14:31

Tgt Ion:163 Resp: 337455

Ion	Ratio	Lower	Upper
163	100		
194	3.5	3.0	4.4
164	10.7	8.4	12.6



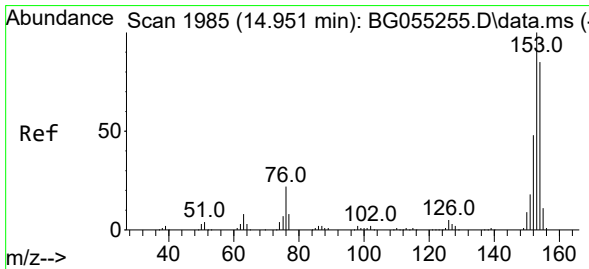
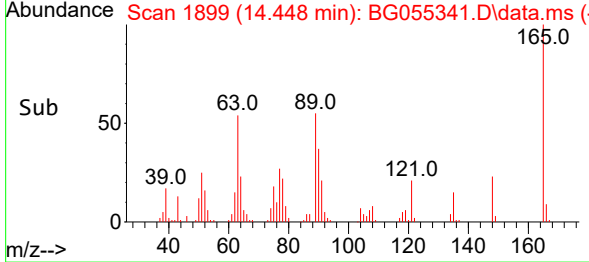
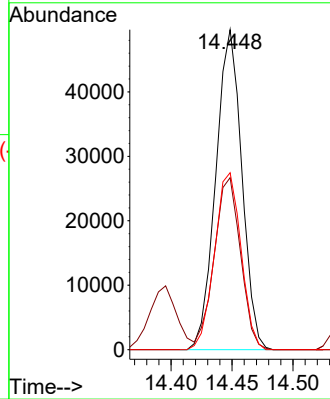
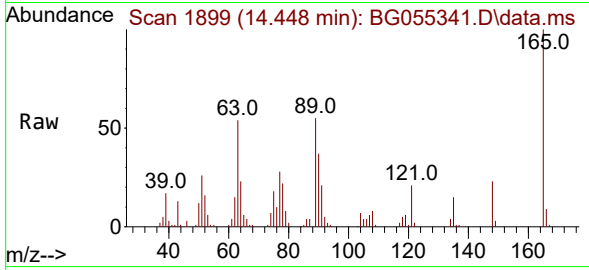


#51
 2,6-Dinitrotoluene
 Concen: 41.723 ng
 RT: 14.448 min Scan# 1899
 Delta R.T. -0.003 min
 Lab File: BG055341.D
 Acq: 28 Oct 2022 14:31

Instrument : BNA_G
 ClientSampleId : PB148557BS

Tgt Ion:165 Resp: 73640

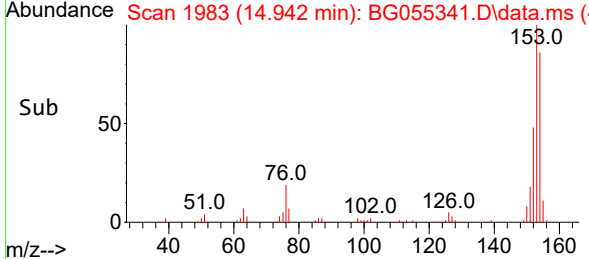
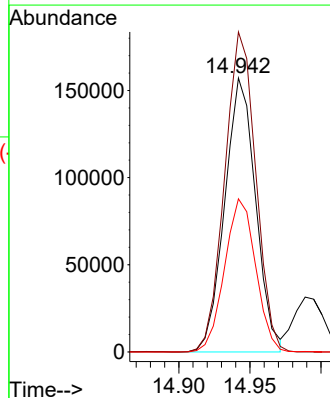
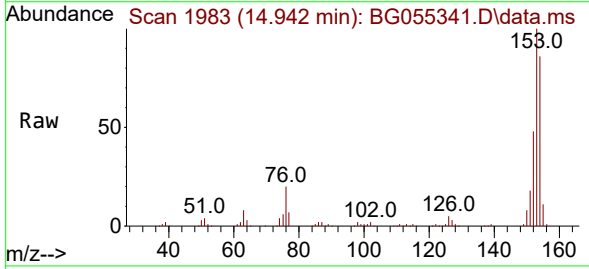
Ion	Ratio	Lower	Upper
165	100		
63	53.7	49.2	73.8
89	55.3	49.9	74.9

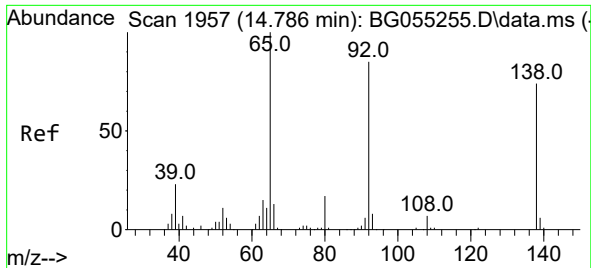


#52
 Acenaphthene
 Concen: 36.211 ng
 RT: 14.942 min Scan# 1983
 Delta R.T. -0.009 min
 Lab File: BG055341.D
 Acq: 28 Oct 2022 14:31

Tgt Ion:154 Resp: 238063

Ion	Ratio	Lower	Upper
154	100		
153	116.8	94.3	141.5
152	55.9	45.3	67.9





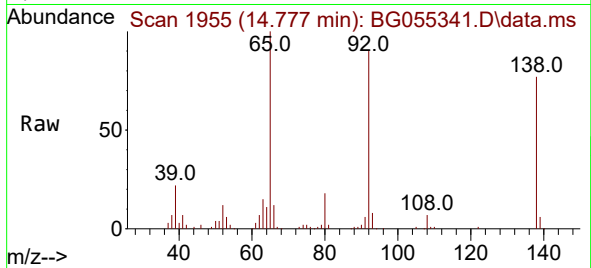
#53
 3-Nitroaniline
 Concen: 31.897 ng
 RT: 14.777 min Scan# 1955
 Delta R.T. -0.009 min
 Lab File: BG055341.D
 Acq: 28 Oct 2022 14:31

Instrument :

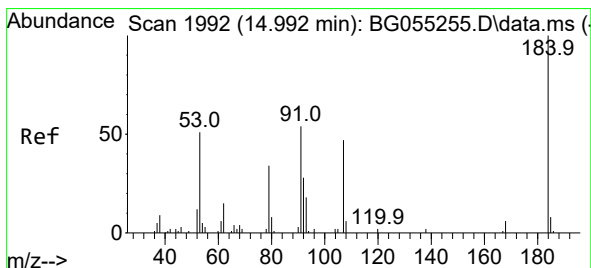
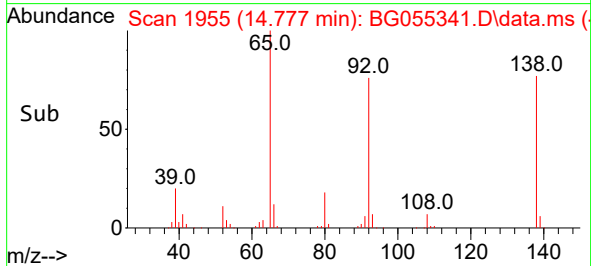
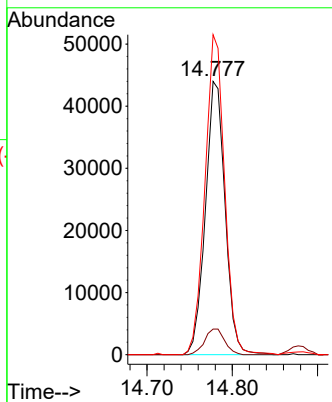
BNA_G

ClientSampleId :

PB148557BS

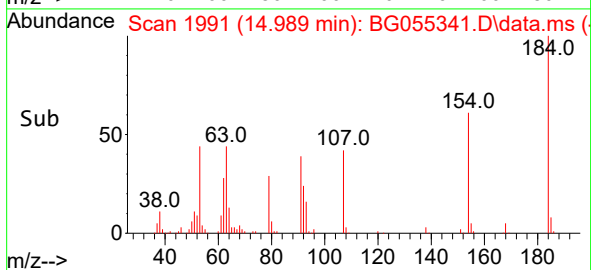
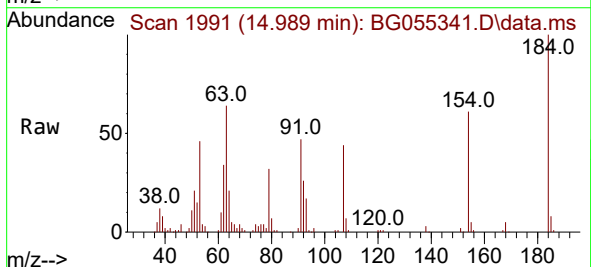
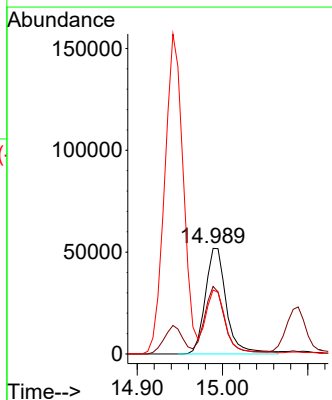


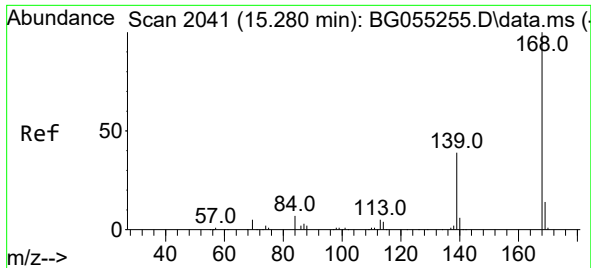
Tgt Ion:138 Resp: 70757
 Ion Ratio Lower Upper
 138 100
 108 9.4 7.5 11.3
 92 117.1 91.8 137.8



#54
 2,4-Dinitrophenol
 Concen: 86.111 ng
 RT: 14.989 min Scan# 1991
 Delta R.T. -0.003 min
 Lab File: BG055341.D
 Acq: 28 Oct 2022 14:31

Tgt Ion:184 Resp: 89334
 Ion Ratio Lower Upper
 184 100
 63 63.9 55.7 83.5
 154 60.7 49.4 74.0

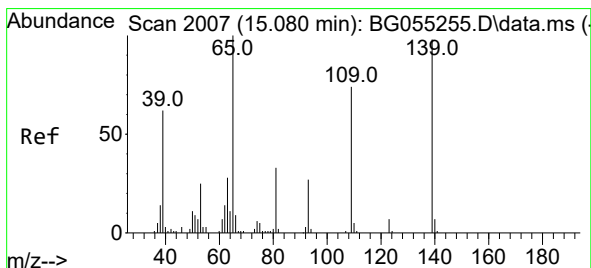
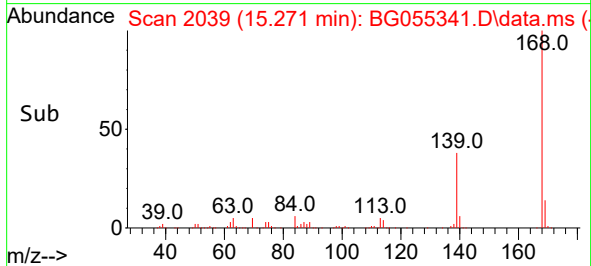
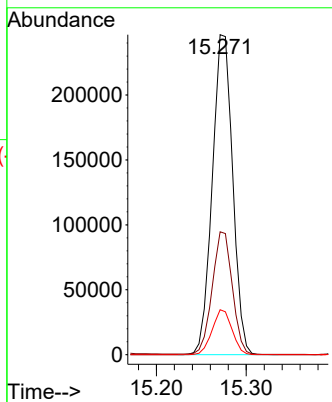
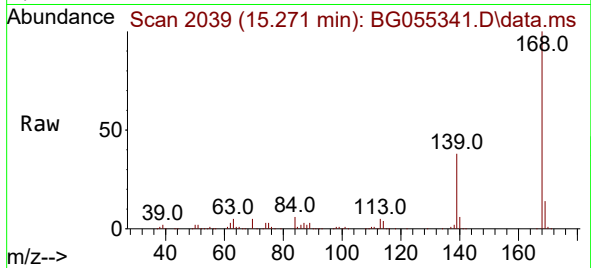




#55
 Dibenzofuran
 Concen: 39.373 ng
 RT: 15.271 min Scan# 2041
 Delta R.T. -0.009 min
 Lab File: BG055341.D
 Acq: 28 Oct 2022 14:31

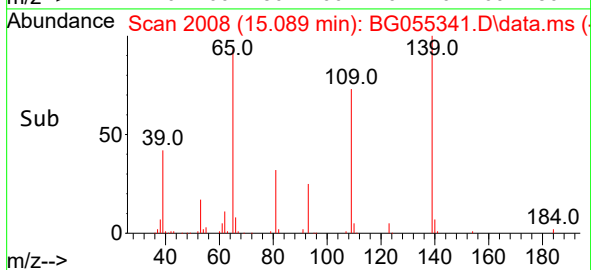
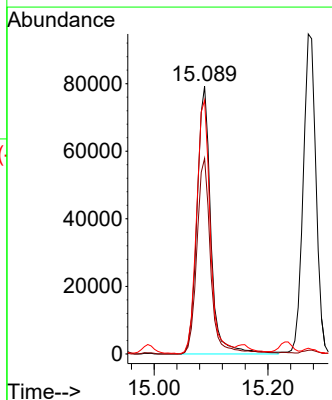
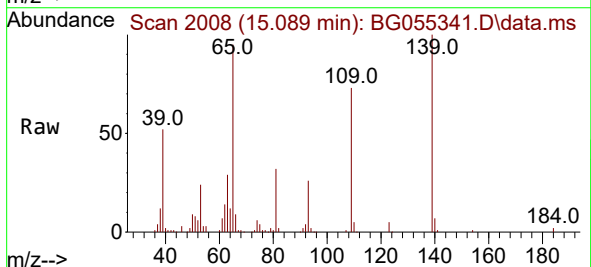
Instrument :
 BNA_G
 ClientSampleId :
 PB148557BS

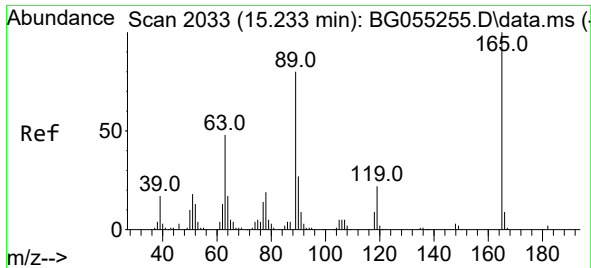
Tgt Ion:168 Resp: 388348
 Ion Ratio Lower Upper
 168 100
 139 38.4 31.6 47.4
 169 14.0 11.0 16.4



#56
 4-Nitrophenol
 Concen: 84.284 ng
 RT: 15.089 min Scan# 2008
 Delta R.T. 0.009 min
 Lab File: BG055341.D
 Acq: 28 Oct 2022 14:31

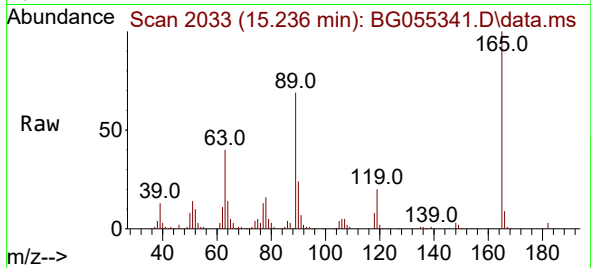
Tgt Ion:139 Resp: 133727
 Ion Ratio Lower Upper
 139 100
 109 73.0 55.4 95.4
 65 94.8 81.6 121.6



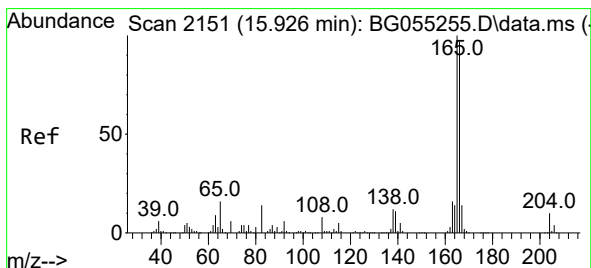
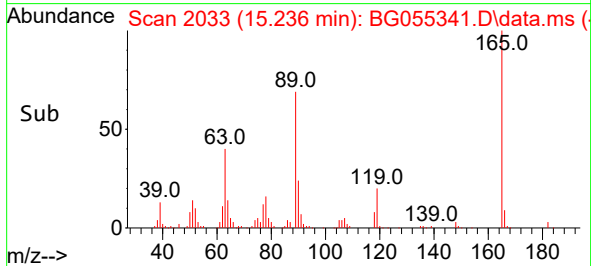
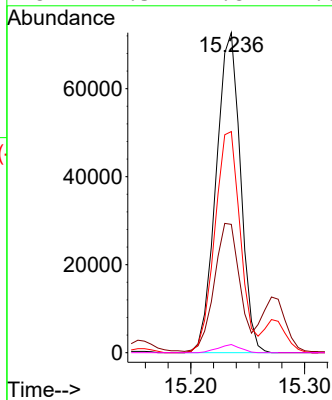


#57
 2,4-Dinitrotoluene
 Concen: 42.354 ng
 RT: 15.236 min Scan# 2033
 Delta R.T. 0.003 min
 Lab File: BG055341.D
 Acq: 28 Oct 2022 14:31

Instrument :
 BNA_G
 ClientSampleId :
 PB148557BS

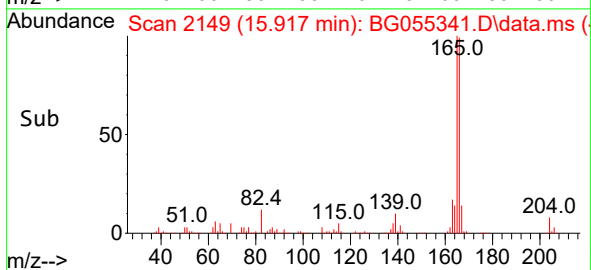
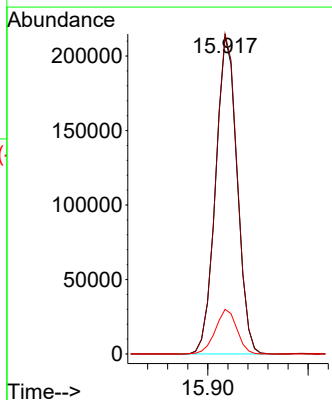
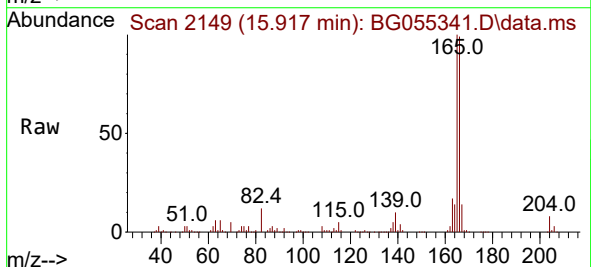


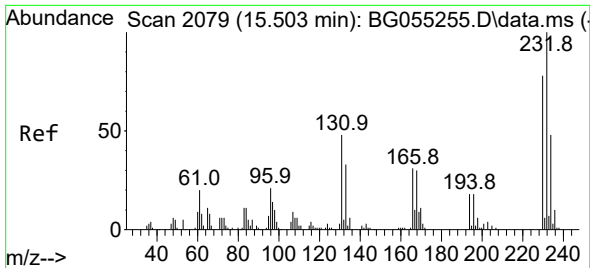
Tgt Ion:165 Resp: 108479
 Ion Ratio Lower Upper
 165 100
 63 40.1 38.9 58.3
 89 69.1 64.2 96.4
 182 2.5 1.8 2.6



#58
 Fluorene
 Concen: 38.586 ng
 RT: 15.917 min Scan# 2149
 Delta R.T. -0.009 min
 Lab File: BG055341.D
 Acq: 28 Oct 2022 14:31

Tgt Ion:166 Resp: 316668
 Ion Ratio Lower Upper
 166 100
 165 100.8 82.4 123.6
 167 14.1 11.5 17.3

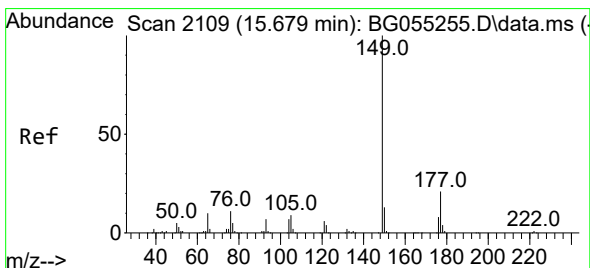
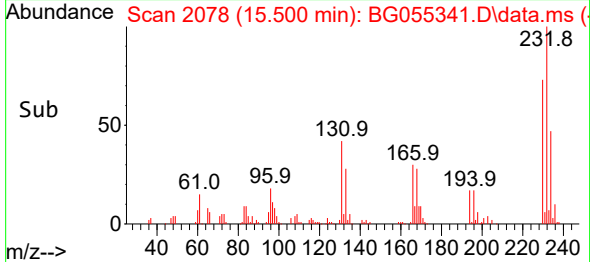
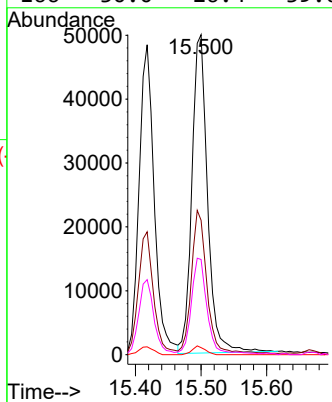
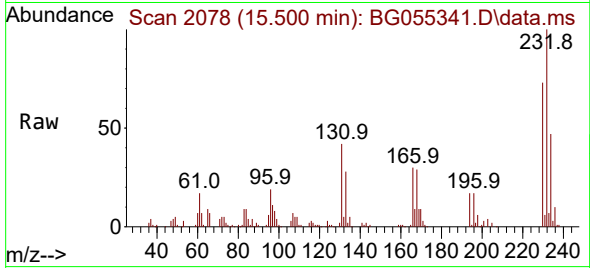




#59
 2,3,4,6-Tetrachlorophenol
 Concen: 42.539 ng
 RT: 15.500 min Scan# 2078
 Delta R.T. -0.003 min
 Lab File: BG055341.D
 Acq: 28 Oct 2022 14:31

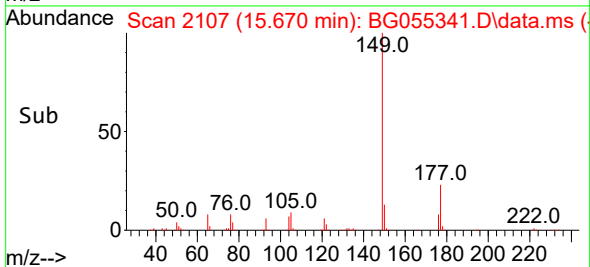
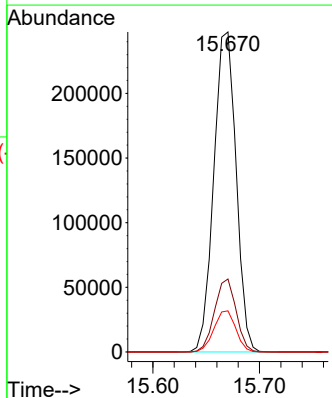
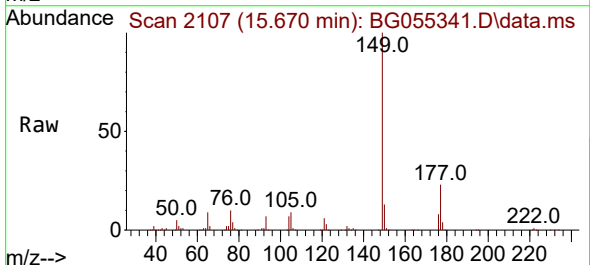
Instrument :
 BNA_G
 ClientSampleId :
 PB148557BS

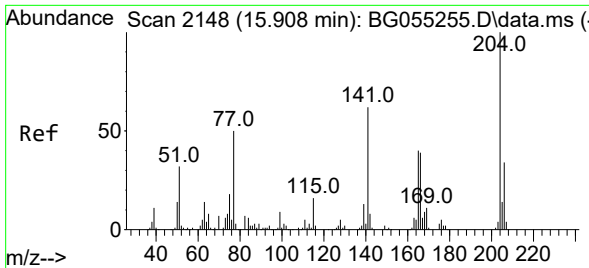
Tgt Ion:232 Resp: 82546
 Ion Ratio Lower Upper
 232 100
 131 46.1 39.6 59.4
 130 2.3 2.1 3.1
 166 30.0 26.4 39.6



#60
 Diethylphthalate
 Concen: 38.991 ng
 RT: 15.670 min Scan# 2107
 Delta R.T. -0.009 min
 Lab File: BG055341.D
 Acq: 28 Oct 2022 14:31

Tgt Ion:149 Resp: 359751
 Ion Ratio Lower Upper
 149 100
 177 22.8 16.7 25.1
 150 12.8 10.2 15.2

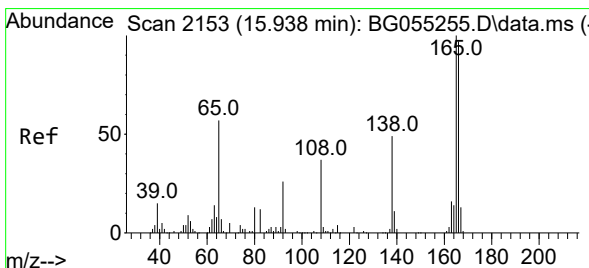
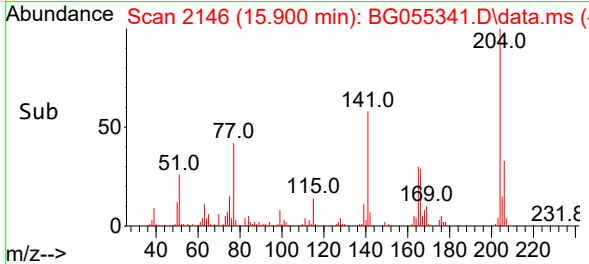
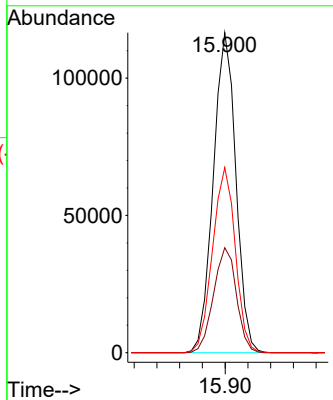
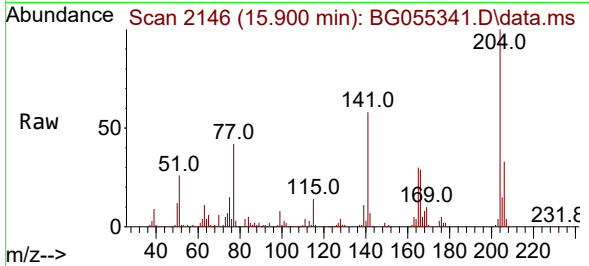




#61
 4-Chlorophenyl-phenylether
 Concen: 42.567 ng
 RT: 15.900 min Scan# 2148
 Delta R.T. -0.009 min
 Lab File: BG055341.D
 Acq: 28 Oct 2022 14:31

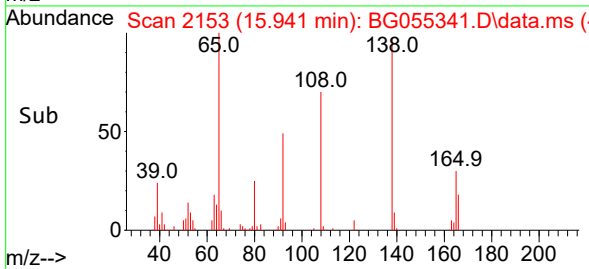
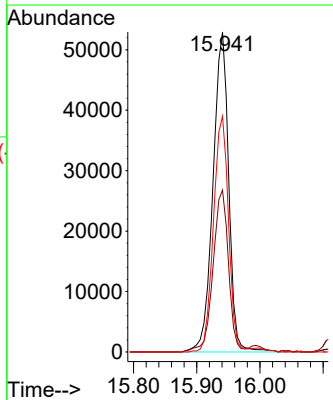
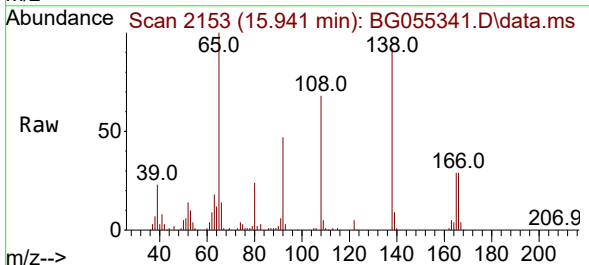
Instrument :
 BNA_G
 ClientSampleId :
 PB148557BS

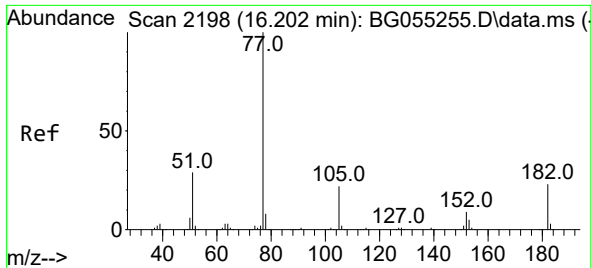
Tgt Ion:204 Resp: 160538
 Ion Ratio Lower Upper
 204 100
 206 32.8 26.9 40.3
 141 57.8 49.9 74.9



#62
 4-Nitroaniline
 Concen: 39.177 ng
 RT: 15.941 min Scan# 2153
 Delta R.T. 0.003 min
 Lab File: BG055341.D
 Acq: 28 Oct 2022 14:31

Tgt Ion:138 Resp: 91327
 Ion Ratio Lower Upper
 138 100
 92 50.6 33.3 73.3
 108 73.7 55.5 95.5





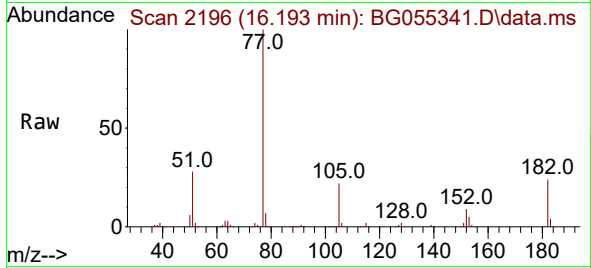
#63
 Azobenzene
 Concen: 36.013 ng
 RT: 16.193 min Scan# 2196
 Delta R.T. -0.009 min
 Lab File: BG055341.D
 Acq: 28 Oct 2022 14:31

Instrument :

BNA_G

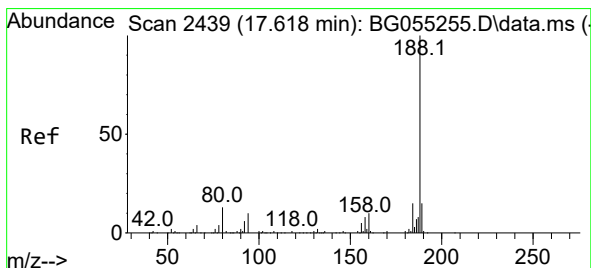
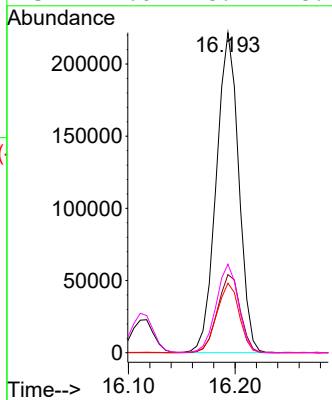
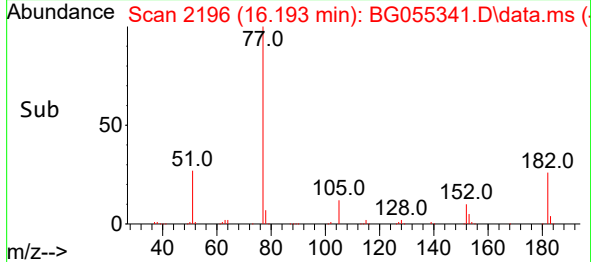
ClientSampleId :

PB148557BS

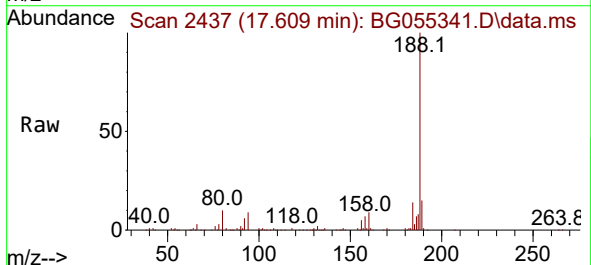


Tgt Ion: 77 Resp: 323699

Ion	Ratio	Lower	Upper
77	100		
182	24.4	2.5	42.5
105	21.7	1.6	41.6
51	27.6	8.7	48.7

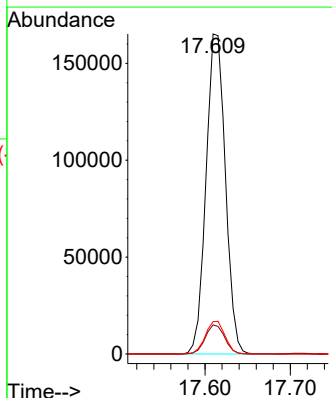
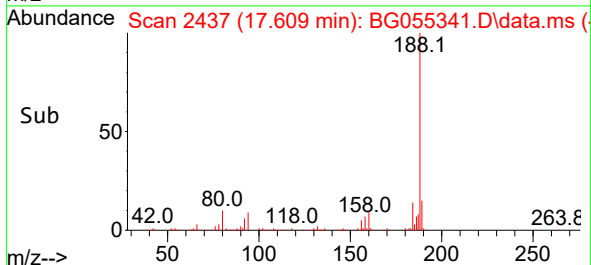


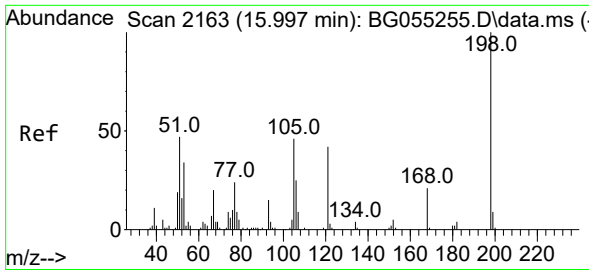
#64
 Phenanthrene-d10
 Concen: 20.000 ng
 RT: 17.609 min Scan# 2437
 Delta R.T. -0.009 min
 Lab File: BG055341.D
 Acq: 28 Oct 2022 14:31



Tgt Ion: 188 Resp: 261041

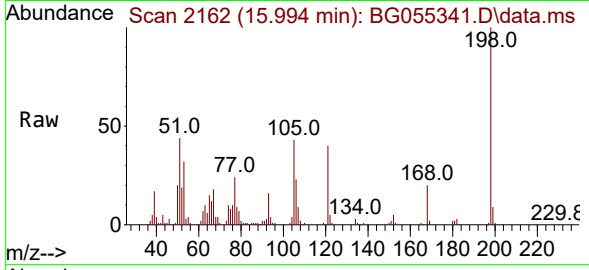
Ion	Ratio	Lower	Upper
188	100		
94	9.1	8.2	12.4
80	10.1	10.1	15.1



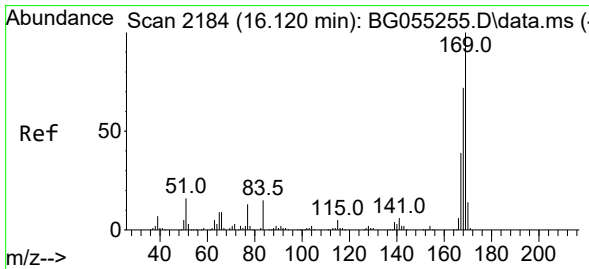
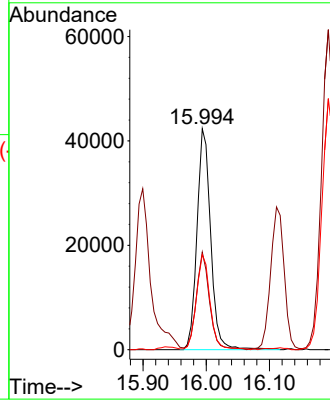
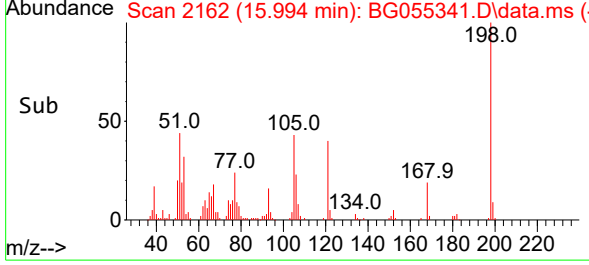


#65
 4,6-Dinitro-2-methylphenol
 Concen: 44.534 ng
 RT: 15.994 min Scan# 2162
 Delta R.T. -0.003 min
 Lab File: BG055341.D
 Acq: 28 Oct 2022 14:31

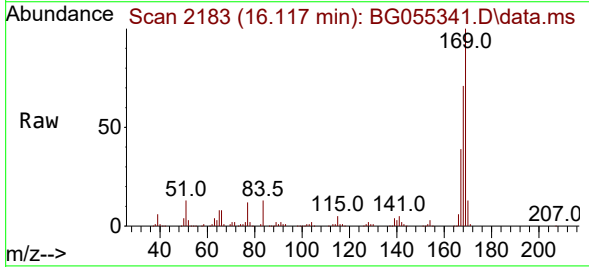
Instrument :
 BNA_G
 ClientSampleId :
 PB148557BS



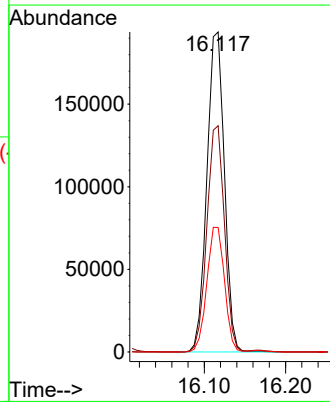
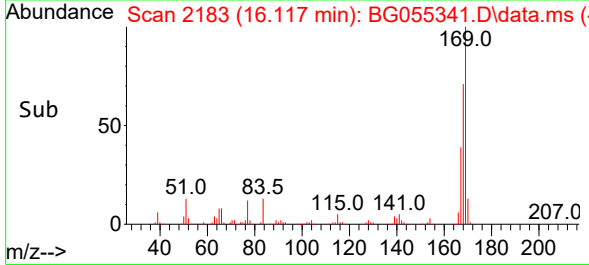
Tgt Ion:198 Resp: 63908
 Ion Ratio Lower Upper
 198 100
 51 44.2 29.6 69.6
 105 43.0 26.6 66.6

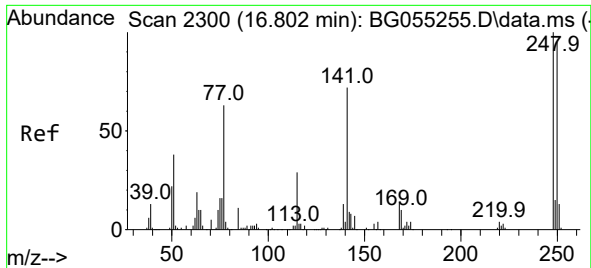


#66
 n-Nitrosodiphenylamine
 Concen: 39.752 ng
 RT: 16.117 min Scan# 2183
 Delta R.T. -0.003 min
 Lab File: BG055341.D
 Acq: 28 Oct 2022 14:31



Tgt Ion:169 Resp: 288830
 Ion Ratio Lower Upper
 169 100
 168 70.7 57.5 86.3
 167 38.9 31.5 47.3

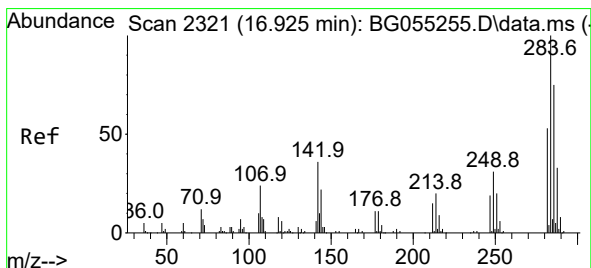
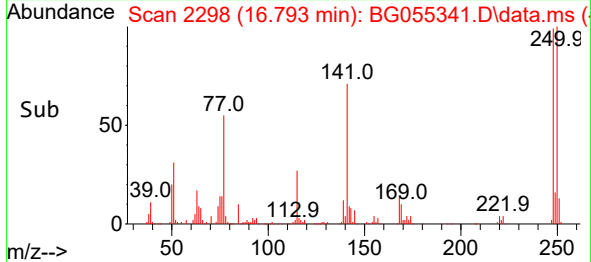
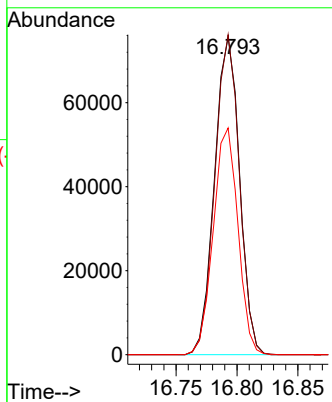
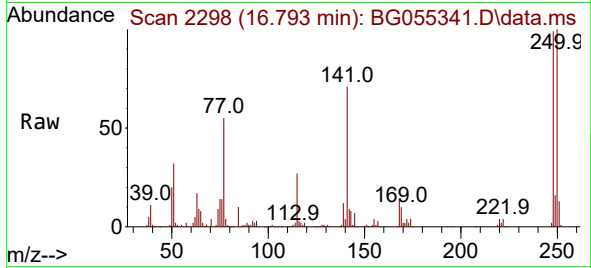




#67
 4-Bromophenyl-phenylether
 Concen: 42.741 ng
 RT: 16.793 min Scan# 21
 Delta R.T. -0.009 min
 Lab File: BG055341.D
 Acq: 28 Oct 2022 14:31

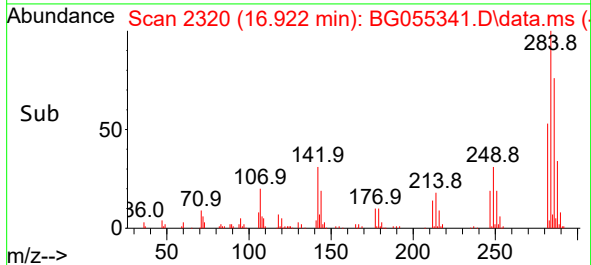
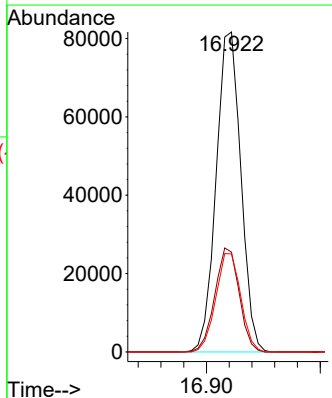
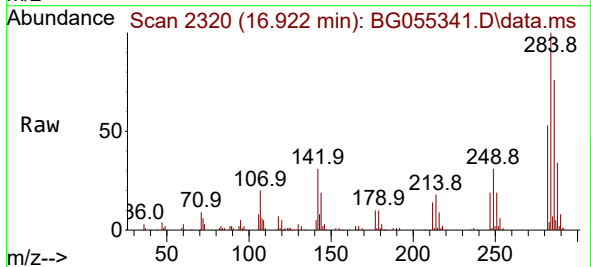
Instrument :
 BNA_G
 ClientSampleId :
 PB148557BS

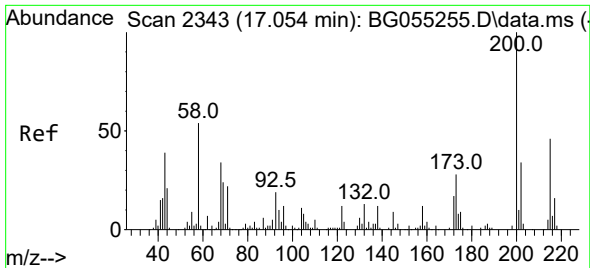
Tgt Ion:248 Resp: 108396
 Ion Ratio Lower Upper
 248 100
 250 100.9 76.0 114.0
 141 71.5 58.0 87.0



#68
 Hexachlorobenzene
 Concen: 42.930 ng
 RT: 16.922 min Scan# 2320
 Delta R.T. -0.003 min
 Lab File: BG055341.D
 Acq: 28 Oct 2022 14:31

Tgt Ion:284 Resp: 123103
 Ion Ratio Lower Upper
 284 100
 142 31.2 28.9 43.3
 249 30.7 25.0 37.4

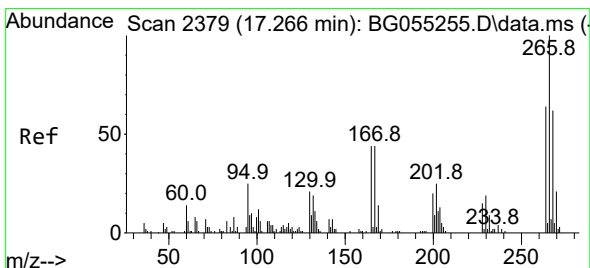
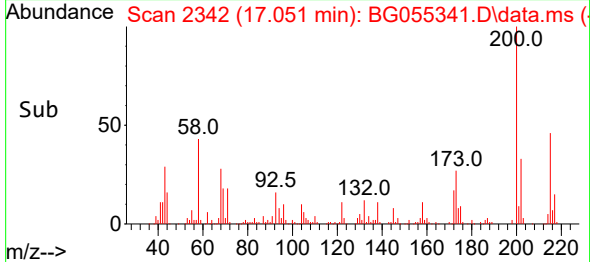
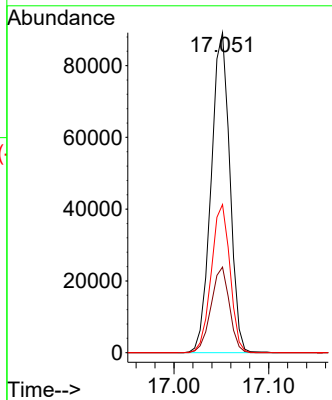
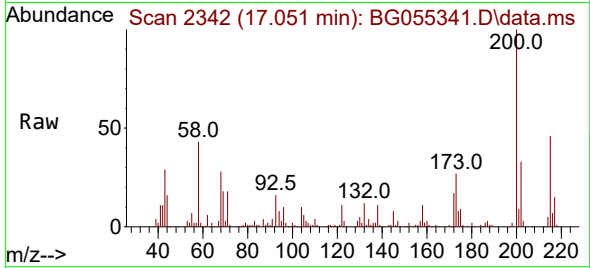




#69
 Atrazine
 Concen: 49.349 ng
 RT: 17.051 min Scan# 21
 Delta R.T. -0.003 min
 Lab File: BG055341.D
 Acq: 28 Oct 2022 14:31

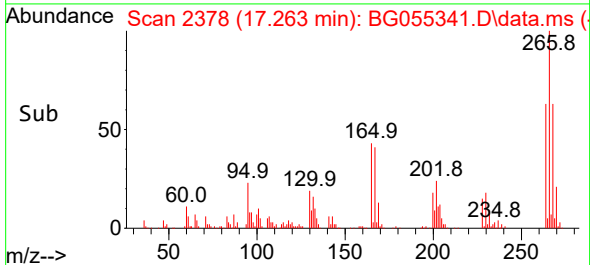
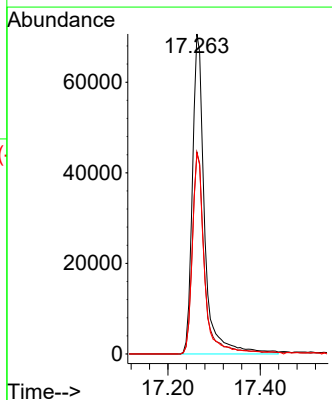
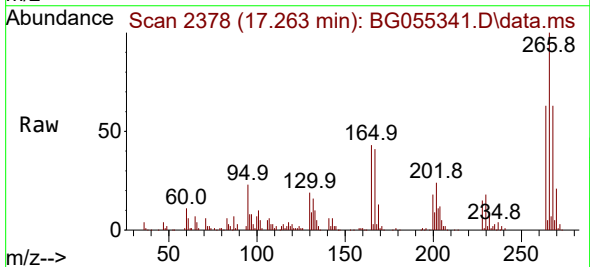
Instrument :
 BNA_G
 ClientSampleId :
 PB148557BS

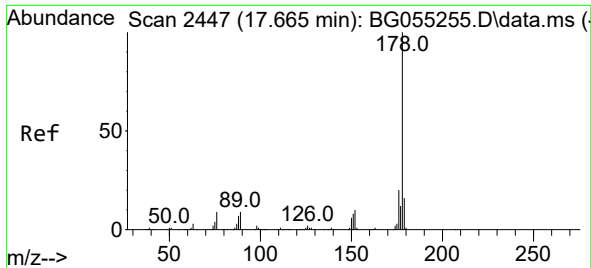
Tgt Ion:200 Resp: 121925
 Ion Ratio Lower Upper
 200 100
 173 26.7 7.7 47.7
 215 46.3 26.1 66.1



#70
 Pentachlorophenol
 Concen: 79.963 ng
 RT: 17.263 min Scan# 2378
 Delta R.T. -0.003 min
 Lab File: BG055341.D
 Acq: 28 Oct 2022 14:31

Tgt Ion:266 Resp: 129535
 Ion Ratio Lower Upper
 266 100
 268 63.1 53.2 79.8
 264 62.7 51.5 77.3



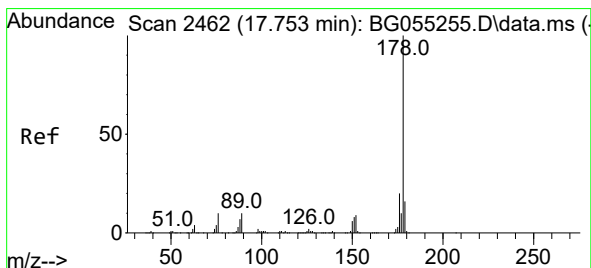
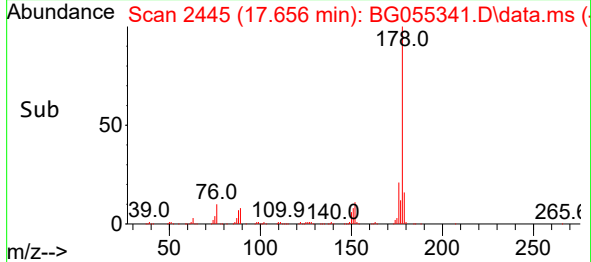
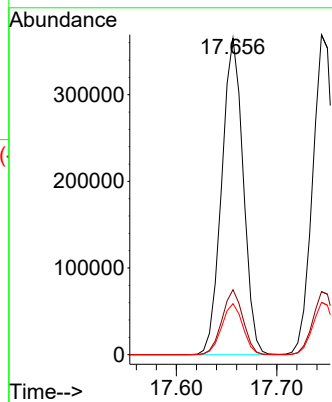
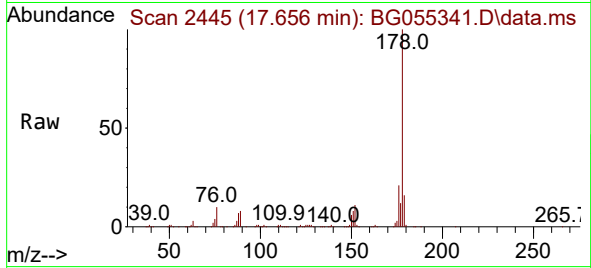


#71
 Phenanthrene
 Concen: 38.960 ng
 RT: 17.656 min Scan# 2445
 Delta R.T. -0.009 min
 Lab File: BG055341.D
 Acq: 28 Oct 2022 14:31

Instrument : BNA_G
 ClientSampleId : PB148557BS

Tgt Ion:178 Resp: 542378

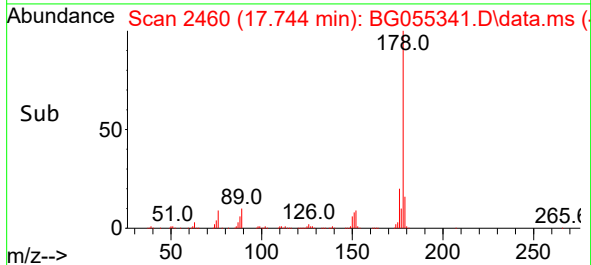
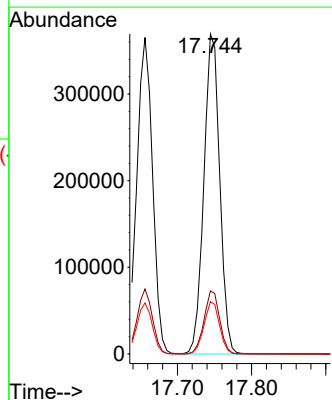
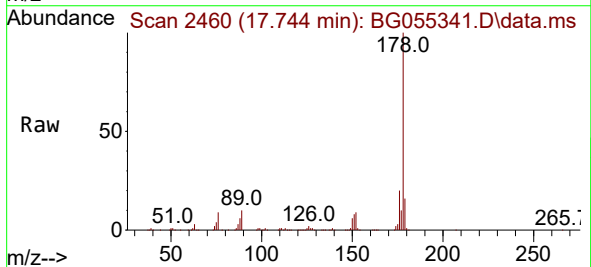
Ion	Ratio	Lower	Upper
178	100		
176	20.5	16.0	24.0
179	16.1	12.6	19.0

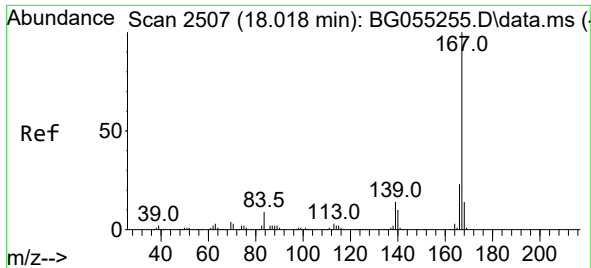


#72
 Anthracene
 Concen: 40.508 ng
 RT: 17.744 min Scan# 2460
 Delta R.T. -0.009 min
 Lab File: BG055341.D
 Acq: 28 Oct 2022 14:31

Tgt Ion:178 Resp: 551306

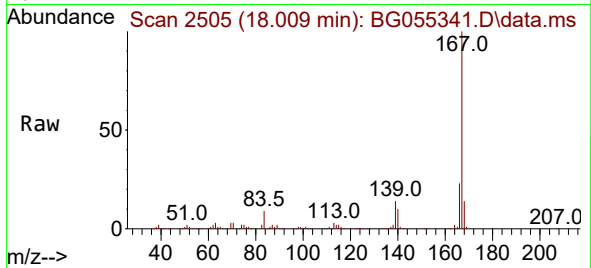
Ion	Ratio	Lower	Upper
178	100		
176	19.7	15.7	23.5
179	16.4	12.9	19.3



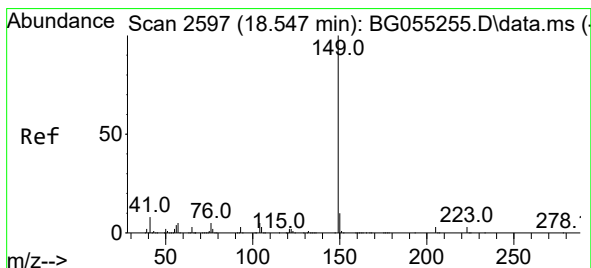
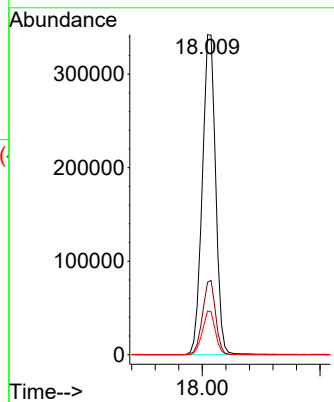
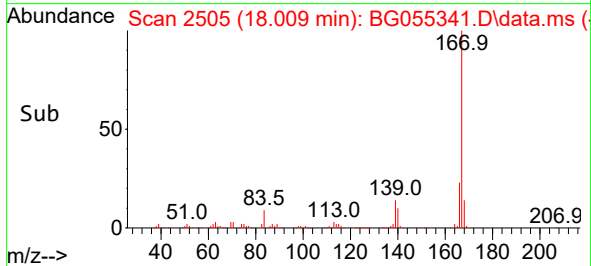


#73
 Carbazole
 Concen: 41.172 ng
 RT: 18.009 min Scan# 2505
 Delta R.T. -0.009 min
 Lab File: BG055341.D
 Acq: 28 Oct 2022 14:31

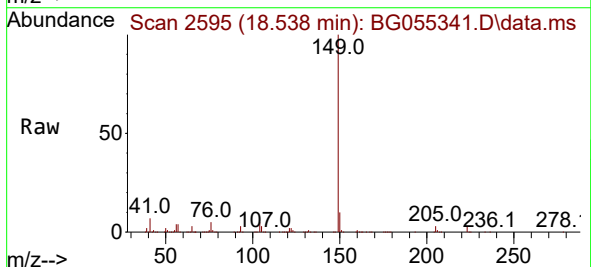
Instrument :
 BNA_G
 ClientSampleId :
 PB148557BS



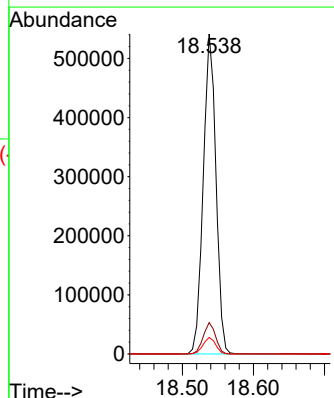
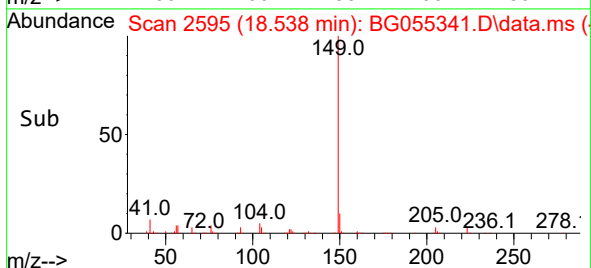
Tgt Ion:167 Resp: 538946
 Ion Ratio Lower Upper
 167 100
 166 22.6 18.6 27.8
 139 13.6 10.9 16.3

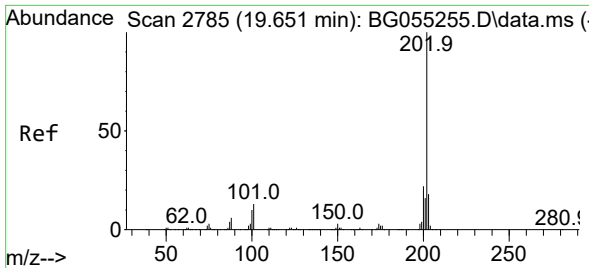


#74
 Di-n-butylphthalate
 Concen: 41.165 ng
 RT: 18.538 min Scan# 2595
 Delta R.T. -0.009 min
 Lab File: BG055341.D
 Acq: 28 Oct 2022 14:31



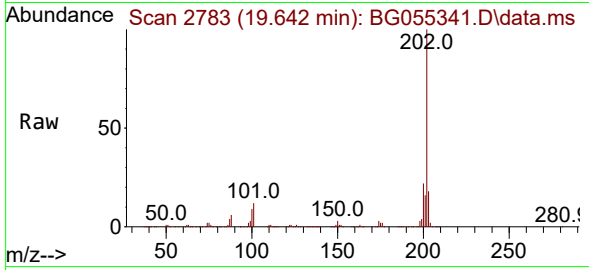
Tgt Ion:149 Resp: 673587
 Ion Ratio Lower Upper
 149 100
 150 9.8 7.8 11.8
 104 5.2 4.2 6.4



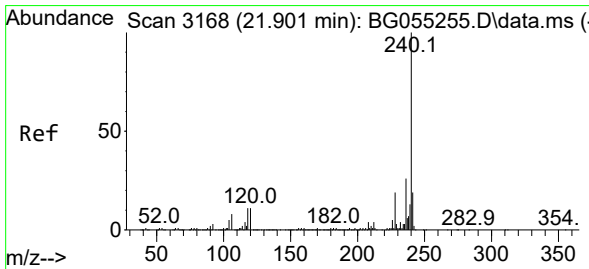
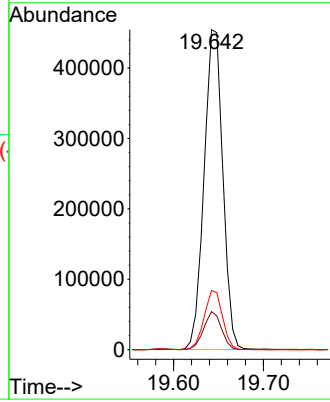
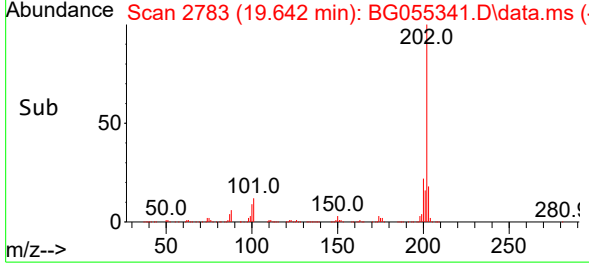


#75
 Fluoranthene
 Concen: 40.615 ng
 RT: 19.642 min Scan# 21
 Delta R.T. -0.009 min
 Lab File: BG055341.D
 Acq: 28 Oct 2022 14:31

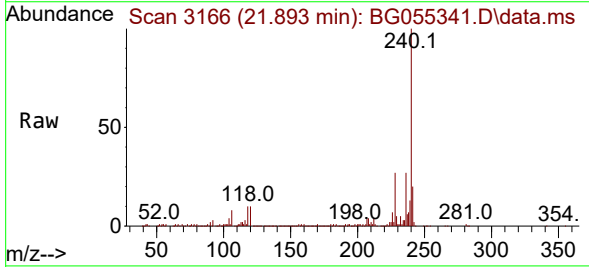
Instrument :
 BNA_G
 ClientSampleId :
 PB148557BS



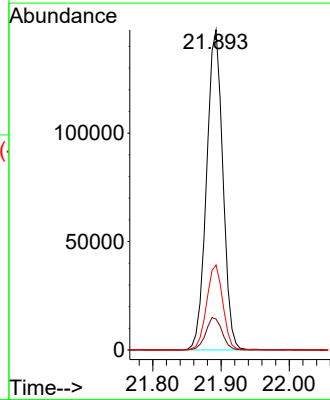
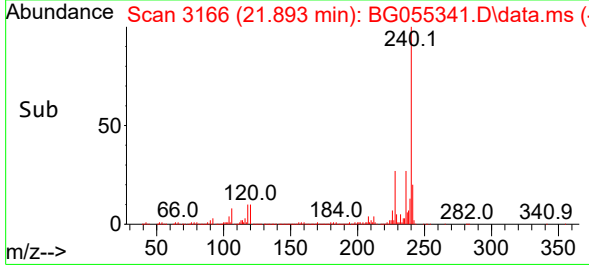
Tgt Ion:202 Resp: 658843
 Ion Ratio Lower Upper
 202 100
 101 11.9 0.0 32.6
 203 18.5 0.0 38.3

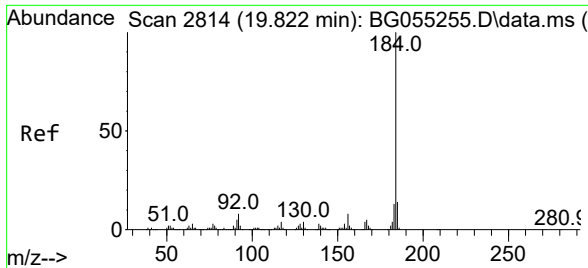


#76
 Chrysene-d12
 Concen: 20.000 ng
 RT: 21.893 min Scan# 3166
 Delta R.T. -0.009 min
 Lab File: BG055341.D
 Acq: 28 Oct 2022 14:31



Tgt Ion:240 Resp: 245066
 Ion Ratio Lower Upper
 240 100
 120 9.7 8.9 13.3
 236 26.6 21.0 31.4



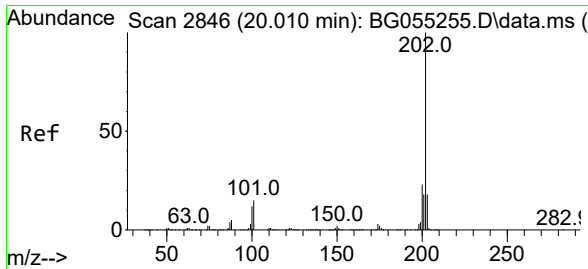
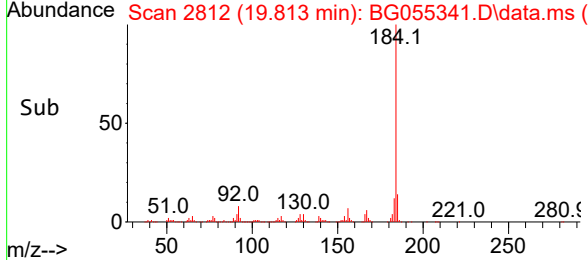
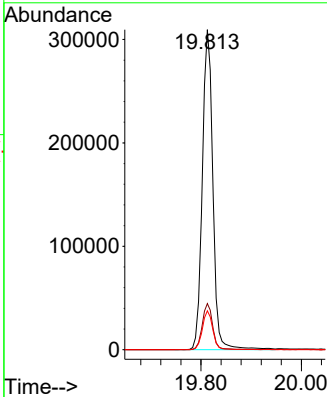
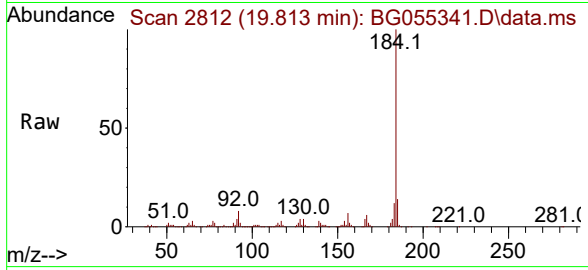


#77
 Benzidine
 Concen: 76.361 ng
 RT: 19.813 min Scan# 2812
 Delta R.T. -0.009 min
 Lab File: BG055341.D
 Acq: 28 Oct 2022 14:31

Instrument : BNA_G
 ClientSampleId : PB148557BS

Tgt Ion:184 Resp: 453104

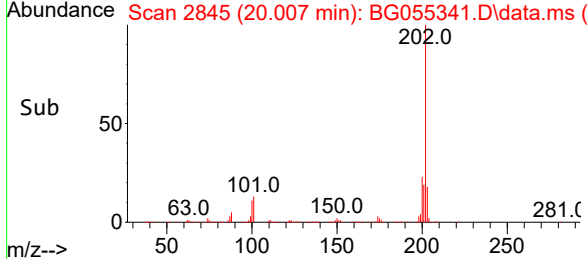
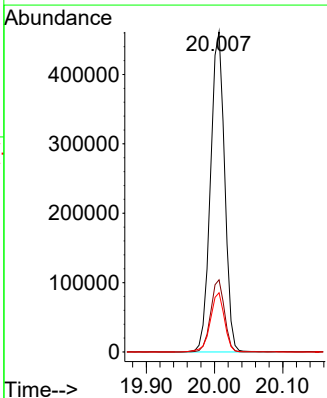
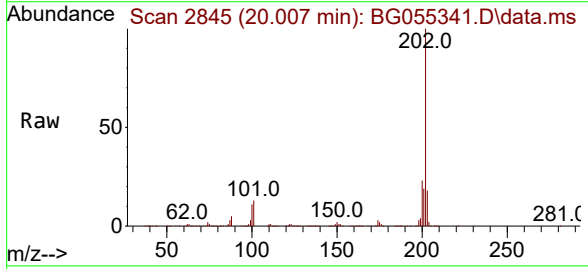
Ion	Ratio	Lower	Upper
184	100		
185	14.4	11.0	16.6
183	12.2	10.0	15.0

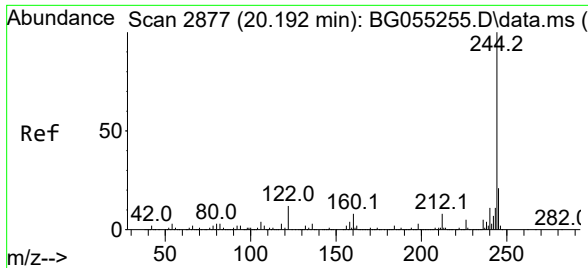


#78
 Pyrene
 Concen: 39.586 ng
 RT: 20.007 min Scan# 2845
 Delta R.T. -0.003 min
 Lab File: BG055341.D
 Acq: 28 Oct 2022 14:31

Tgt Ion:202 Resp: 664956

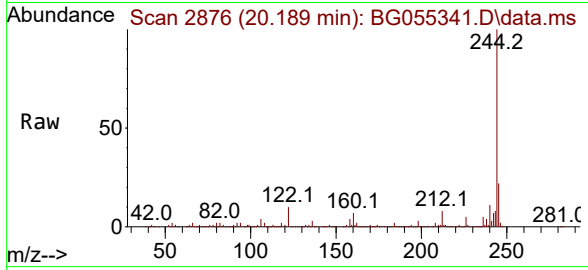
Ion	Ratio	Lower	Upper
202	100		
200	22.5	18.0	27.0
203	18.5	14.3	21.5



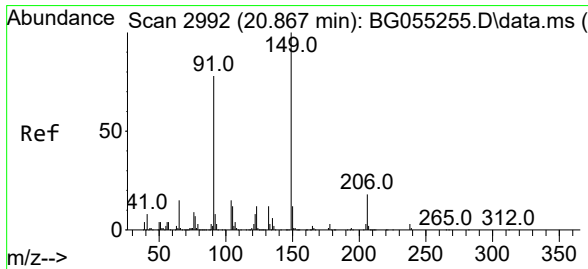
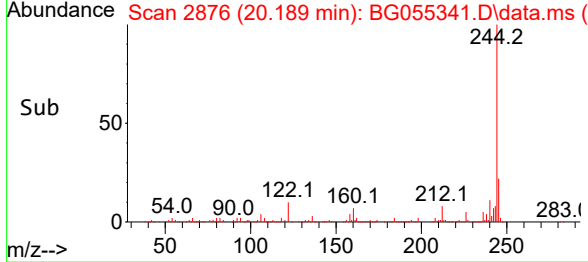
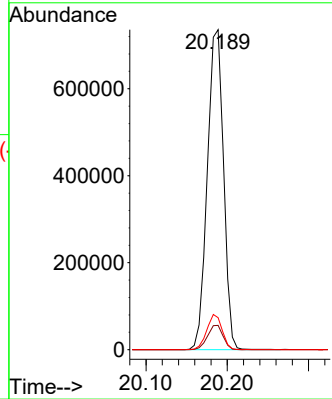


#79
 Terphenyl-d14
 Concen: 86.218 ng
 RT: 20.189 min Scan# 2876
 Delta R.T. -0.003 min
 Lab File: BG055341.D
 Acq: 28 Oct 2022 14:31

Instrument : BNA_G
 ClientSampleId : PB148557BS

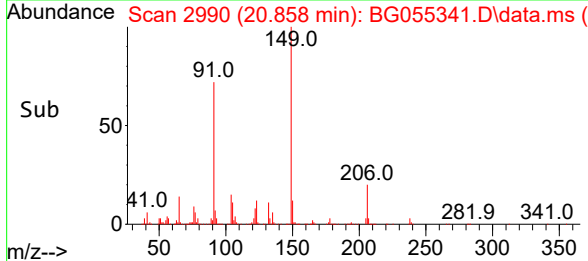
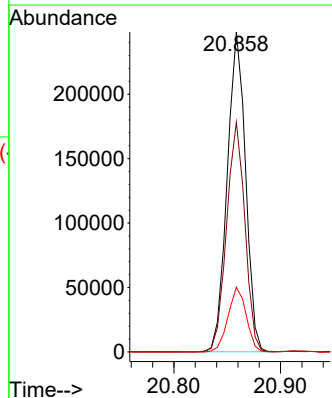
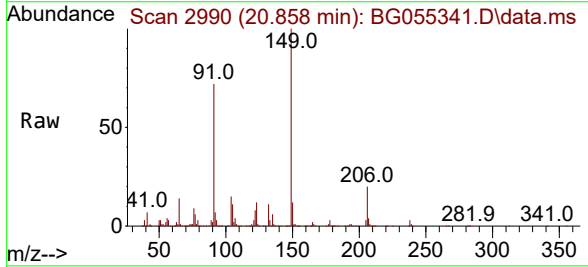


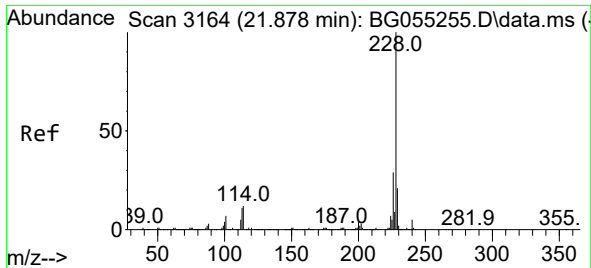
Tgt Ion:244 Resp: 1016953
 Ion Ratio Lower Upper
 244 100
 212 7.6 6.0 9.0
 122 10.0 9.6 14.4



#80
 Butylbenzylphthalate
 Concen: 37.406 ng
 RT: 20.858 min Scan# 2990
 Delta R.T. -0.009 min
 Lab File: BG055341.D
 Acq: 28 Oct 2022 14:31

Tgt Ion:149 Resp: 296915
 Ion Ratio Lower Upper
 149 100
 91 71.8 62.2 93.4
 206 20.3 14.6 21.8

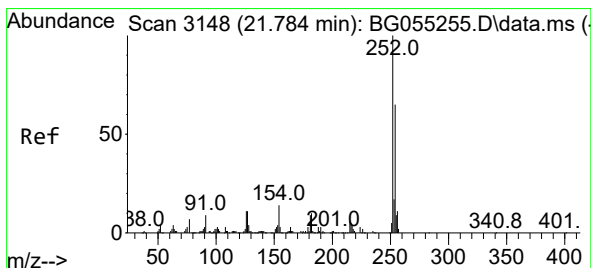
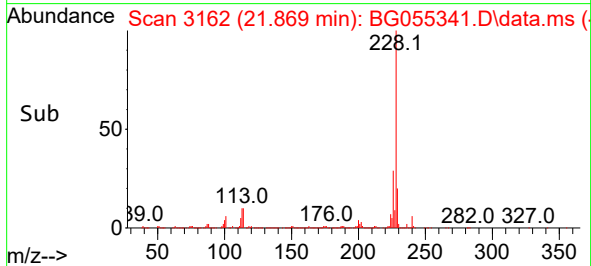
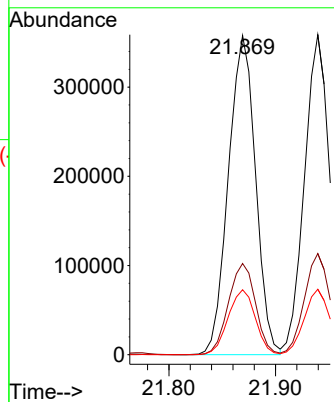
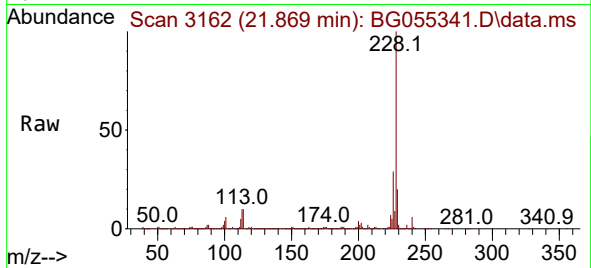




#81
 Benzo(a)anthracene
 Concen: 38.494 ng
 RT: 21.869 min Scan# 3162
 Delta R.T. -0.009 min
 Lab File: BG055341.D
 Acq: 28 Oct 2022 14:31

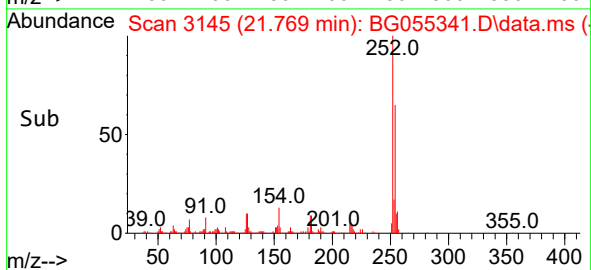
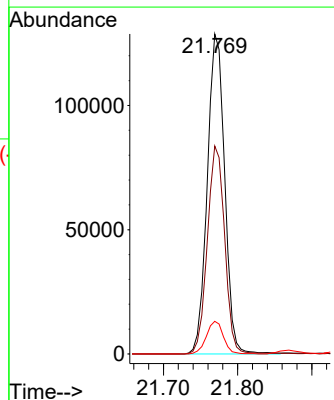
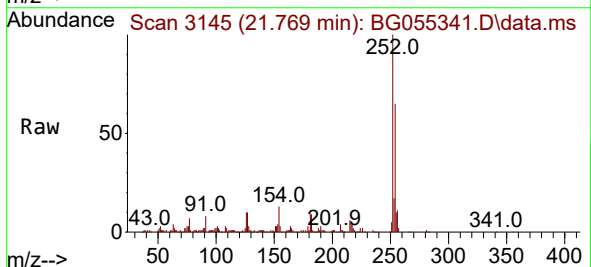
Instrument :
 BNA_G
 ClientSampleId :
 PB148557BS

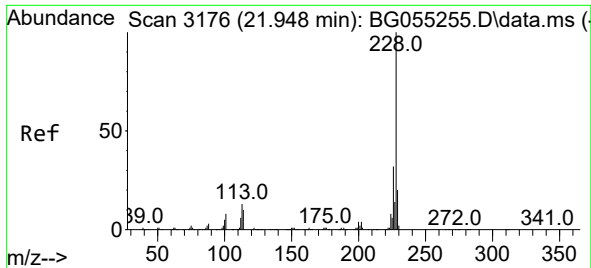
Tgt Ion:228 Resp: 633482
 Ion Ratio Lower Upper
 228 100
 226 28.6 22.9 34.3
 229 20.3 16.7 25.1



#82
 3,3'-Dichlorobenzidine
 Concen: 39.226 ng
 RT: 21.769 min Scan# 3145
 Delta R.T. -0.015 min
 Lab File: BG055341.D
 Acq: 28 Oct 2022 14:31

Tgt Ion:252 Resp: 210239
 Ion Ratio Lower Upper
 252 100
 254 65.0 52.2 78.4
 126 10.2 8.6 12.8



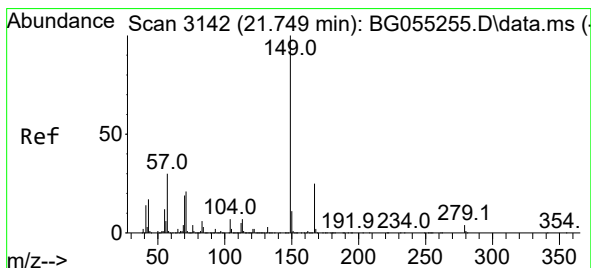
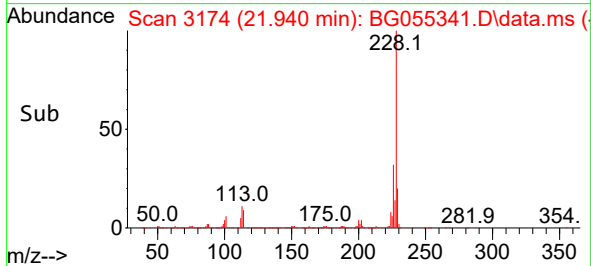
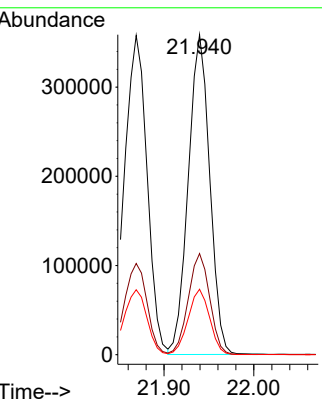
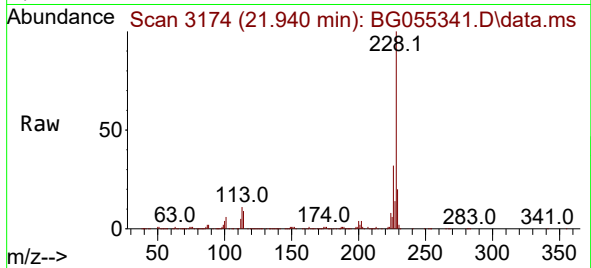


#83
 Chrysene
 Concen: 38.061 ng
 RT: 21.940 min Scan# 3139
 Delta R.T. -0.009 min
 Lab File: BG055341.D
 Acq: 28 Oct 2022 14:31

Instrument :
 BNA_G
 ClientSampleId :
 PB148557BS

Tgt Ion:228 Resp: 594964

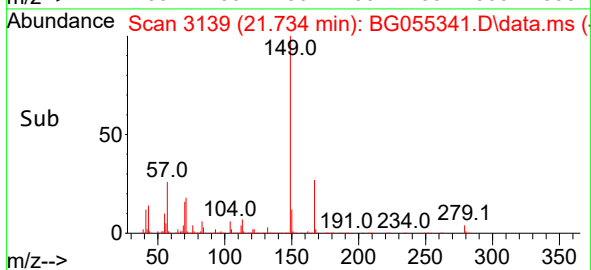
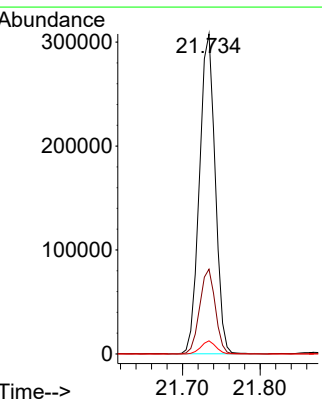
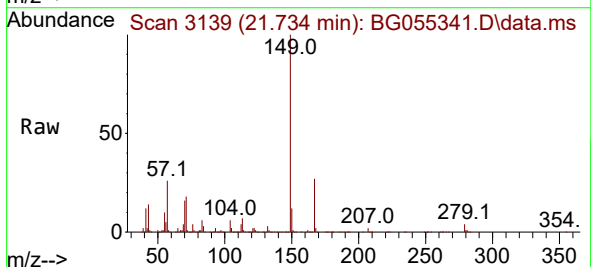
Ion	Ratio	Lower	Upper
228	100		
226	31.6	25.8	38.8
229	20.4	16.3	24.5

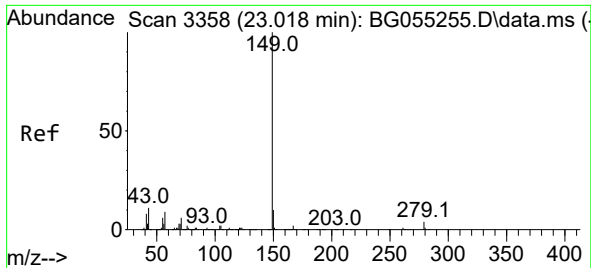


#84
 Bis(2-ethylhexyl)phthalate
 Concen: 38.202 ng
 RT: 21.734 min Scan# 3139
 Delta R.T. -0.015 min
 Lab File: BG055341.D
 Acq: 28 Oct 2022 14:31

Tgt Ion:149 Resp: 433183

Ion	Ratio	Lower	Upper
149	100		
167	26.5	20.2	30.2
279	4.1	2.8	4.2

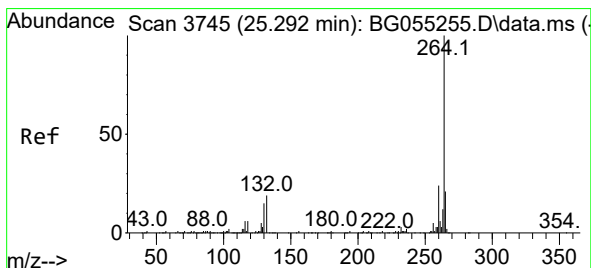
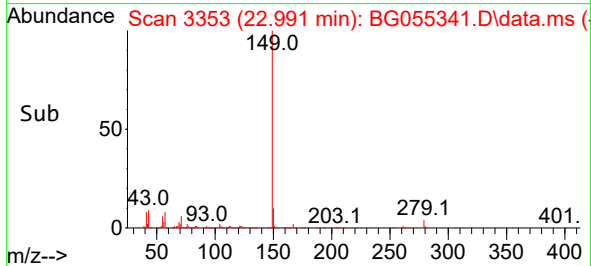
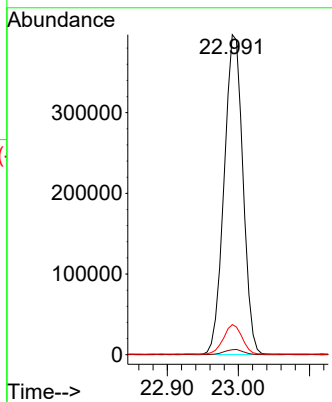
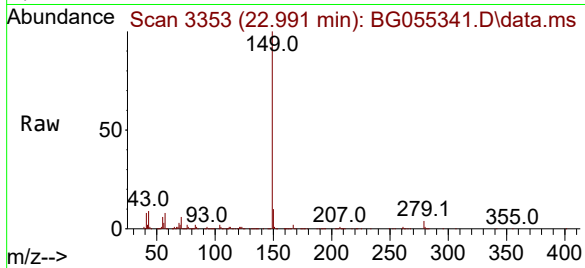




#85
 Di-n-octyl phthalate
 Concen: 38.514 ng
 RT: 22.991 min Scan# 31
 Delta R.T. -0.027 min
 Lab File: BG055341.D
 Acq: 28 Oct 2022 14:31

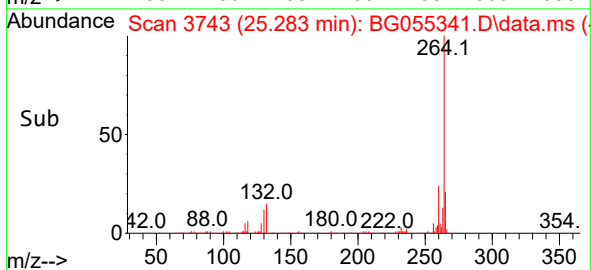
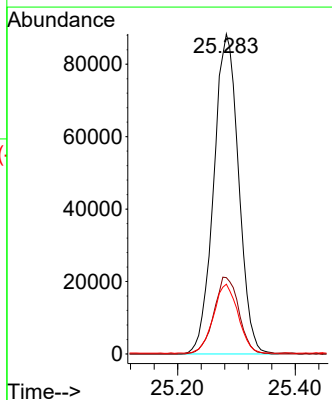
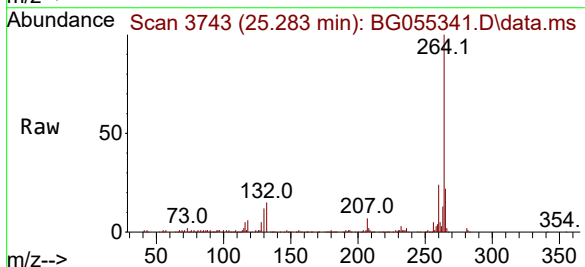
Instrument :
 BNA_G
 ClientSampleId :
 PB148557BS

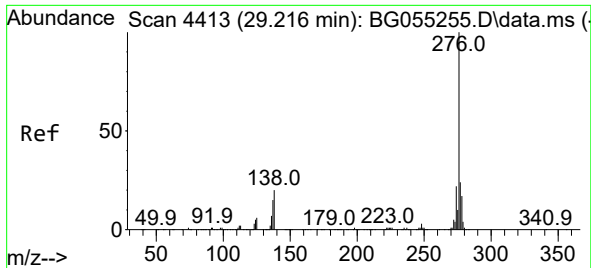
Tgt Ion	Resp	Lower	Upper
149	100		
167	1.7	1.3	1.9
43	9.0	8.6	12.8



#86
 Perylene-d12
 Concen: 20.000 ng
 RT: 25.283 min Scan# 3743
 Delta R.T. -0.009 min
 Lab File: BG055341.D
 Acq: 28 Oct 2022 14:31

Tgt Ion	Resp	Lower	Upper
264	100		
260	23.9	19.5	29.3
265	21.8	17.4	26.2



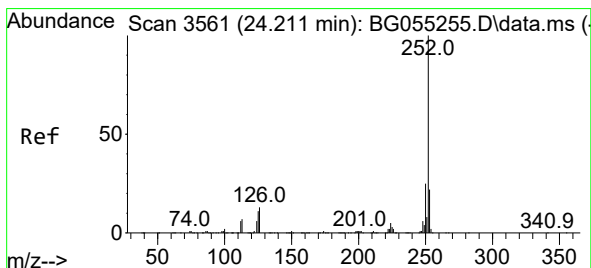
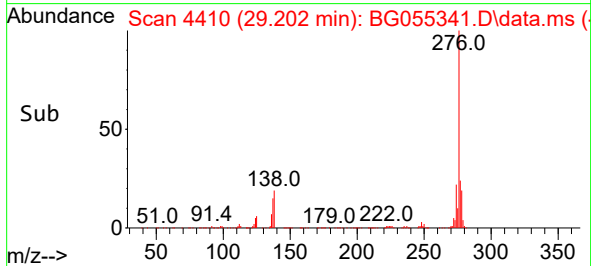
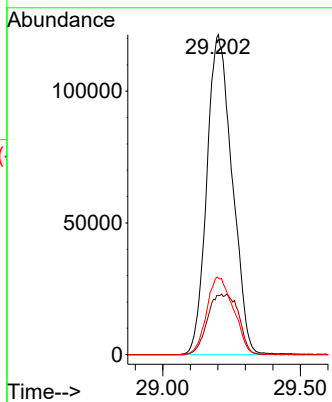
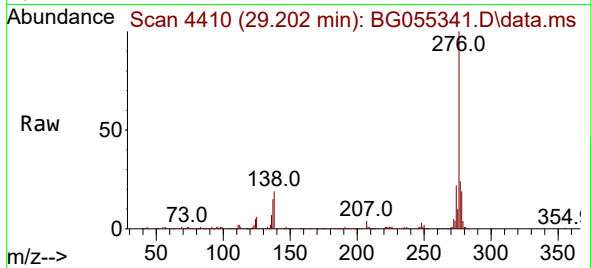


#87
 Indeno(1,2,3-cd)pyrene
 Concen: 40.588 ng
 RT: 29.202 min Scan# 4410
 Delta R.T. -0.015 min
 Lab File: BG055341.D
 Acq: 28 Oct 2022 14:31

Instrument :
 BNA_G
 ClientSampleId :
 PB148557BS

Tgt Ion: 276 Resp: 777085

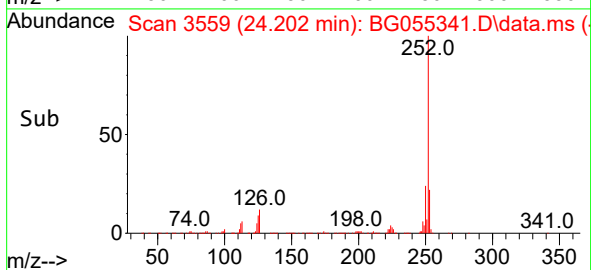
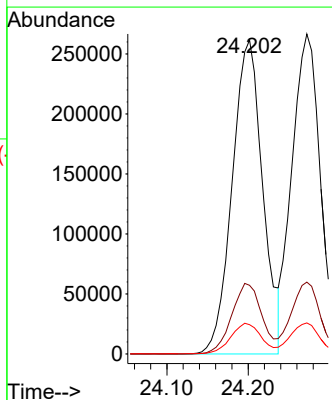
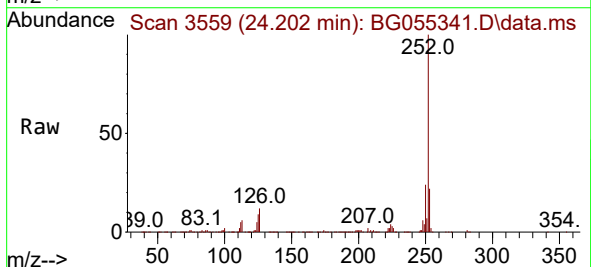
Ion	Ratio	Lower	Upper
276	100		
138	12.0	13.9	20.9#
277	25.7	20.3	30.5

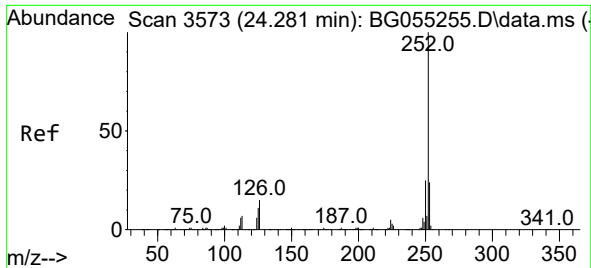


#88
 Benzo(b)fluoranthene
 Concen: 43.825 ng
 RT: 24.202 min Scan# 3559
 Delta R.T. -0.009 min
 Lab File: BG055341.D
 Acq: 28 Oct 2022 14:31

Tgt Ion: 252 Resp: 683343

Ion	Ratio	Lower	Upper
252	100		
253	21.9	17.6	26.4
125	9.4	9.0	13.4



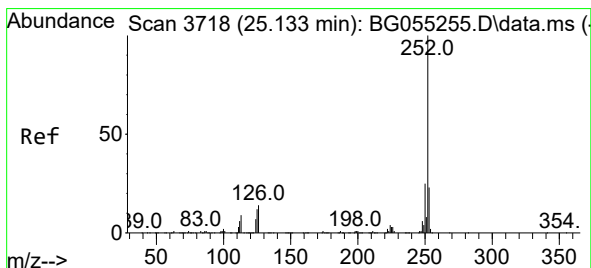
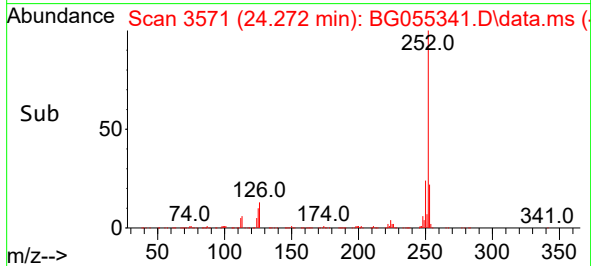
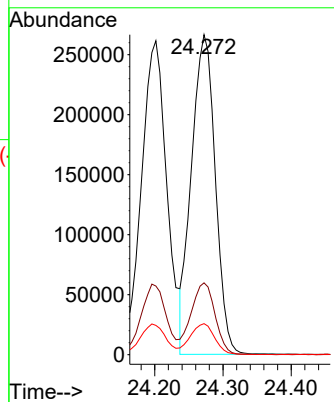
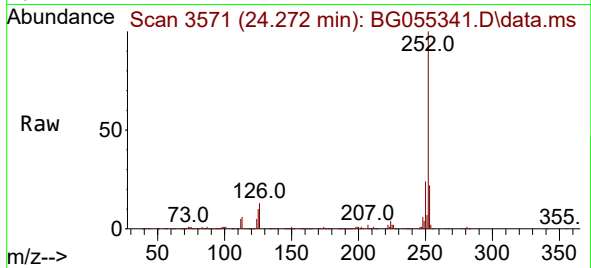


#89
 Benzo(k)fluoranthene
 Concen: 40.949 ng
 RT: 24.272 min Scan# 31
 Delta R.T. -0.009 min
 Lab File: BG055341.D
 Acq: 28 Oct 2022 14:31

Instrument :
 BNA_G
 ClientSampleId :
 PB148557BS

Tgt Ion:252 Resp: 644735

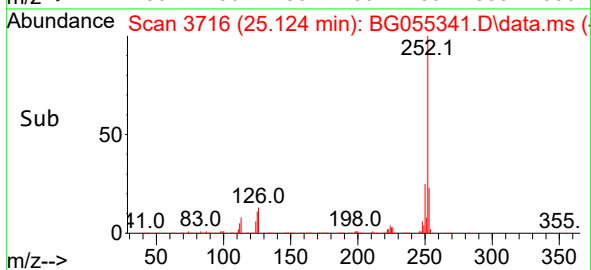
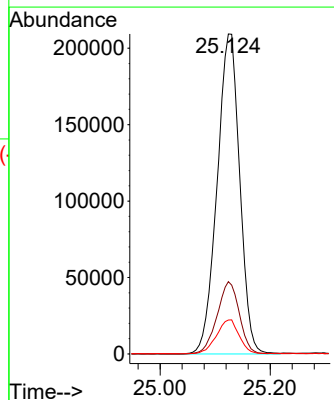
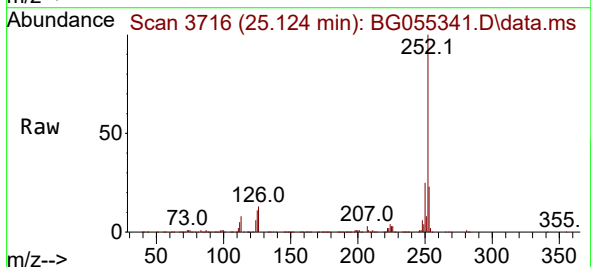
Ion	Ratio	Lower	Upper
252	100		
253	22.4	18.6	27.8
125	9.7	9.1	13.7

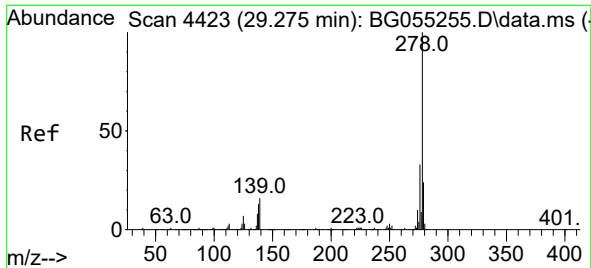


#90
 Benzo(a)pyrene
 Concen: 44.585 ng
 RT: 25.124 min Scan# 3716
 Delta R.T. -0.009 min
 Lab File: BG055341.D
 Acq: 28 Oct 2022 14:31

Tgt Ion:252 Resp: 596160

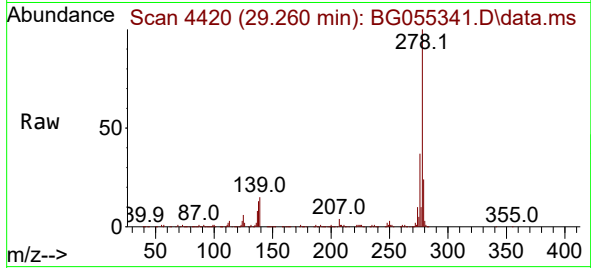
Ion	Ratio	Lower	Upper
252	100		
253	22.6	18.2	27.2
125	10.6	9.8	14.8



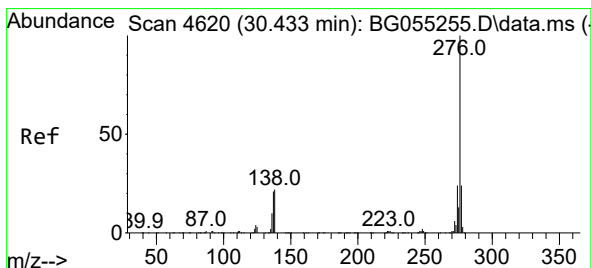
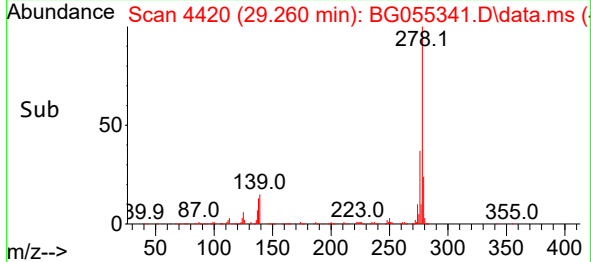
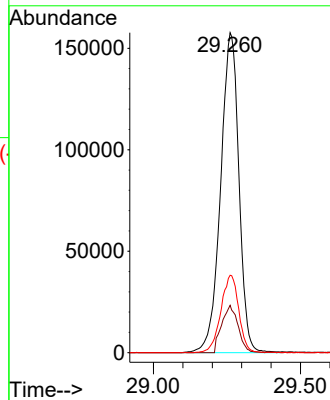


#91
 Dibenzo(a,h)anthracene
 Concen: 43.375 ng
 RT: 29.260 min Scan# 4423
 Delta R.T. -0.015 min
 Lab File: BG055341.D
 Acq: 28 Oct 2022 14:31

Instrument :
 BNA_G
 ClientSampleId :
 PB148557BS



Tgt Ion:278 Resp: 681489
 Ion Ratio Lower Upper
 278 100
 139 14.8 12.9 19.3
 279 24.2 19.0 28.6



#92
 Benzo(g,h,i)perylene
 Concen: 42.723 ng
 RT: 30.430 min Scan# 4619
 Delta R.T. -0.003 min
 Lab File: BG055341.D
 Acq: 28 Oct 2022 14:31

Tgt Ion:276 Resp: 665793
 Ion Ratio Lower Upper
 276 100
 277 24.0 19.1 28.7
 138 19.9 17.2 25.8

