

Data Path : Z:\svoasrv\HPCHEM1\BNA_G\Data\BG102822\
 Data File : BG055350.D
 Acq On : 28 Oct 2022 20:44
 Operator : CG/JU
 Sample : N5290-01
 Misc :
 ALS Vial : 9 Sample Multiplier: 1

Instrument :
 BNA_G
 ClientSampleId :
 257248-7

Quant Time: Oct 29 04:56:05 2022
 Quant Method : Z:\svoasrv\HPCHEM1\BNA_G\Methods\8270-BG102422.M
 Quant Title : ASP BNA STANDARDS FOR 5 POINT CALIBRATION
 QLast Update : Sat Oct 29 04:52:38 2022
 Response via : Initial Calibration

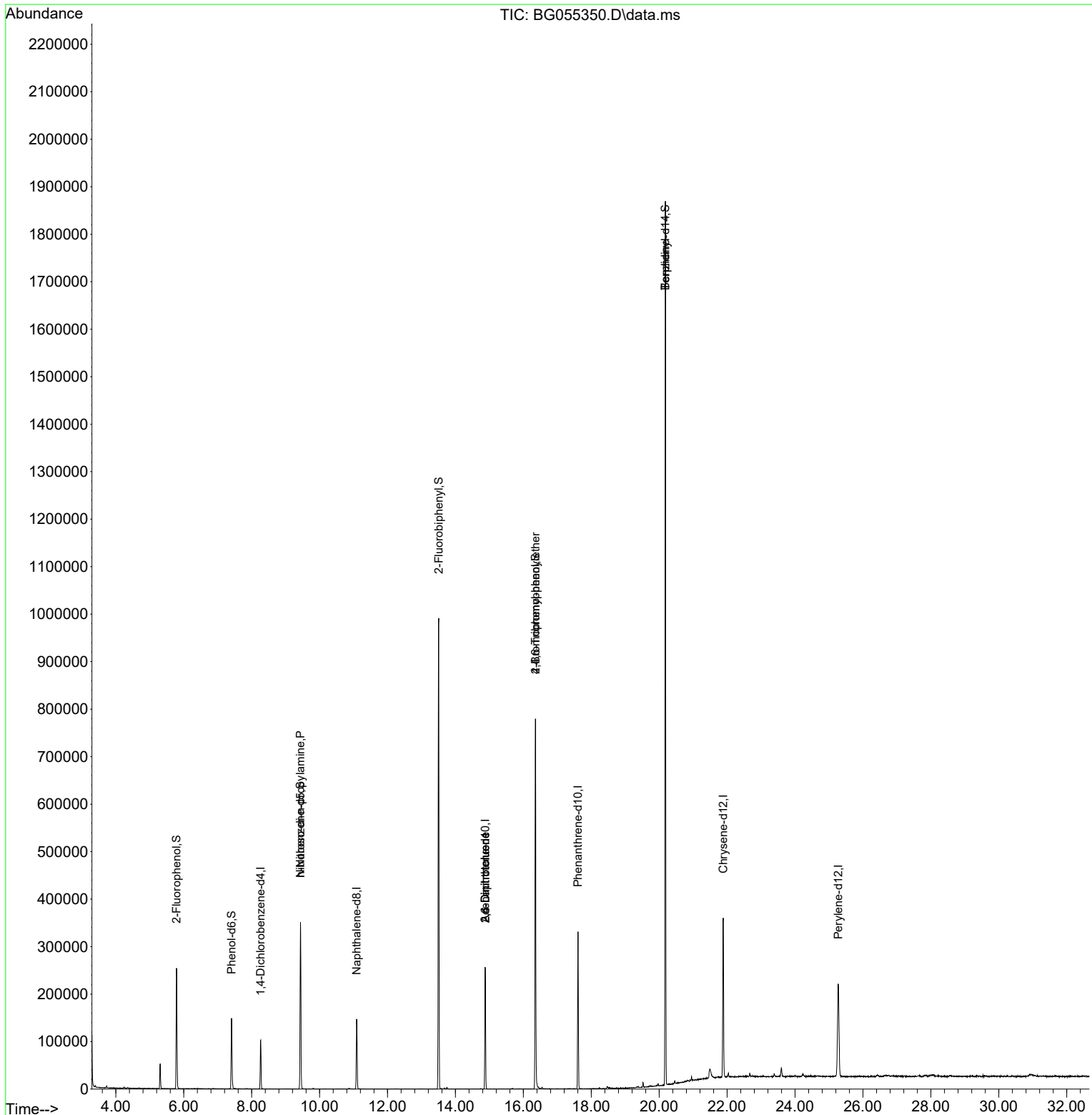
Compound	R.T.	QIon	Response	Conc	Units	Dev(Min)
Internal Standards						
1) 1,4-Dichlorobenzene-d4	8.265	152	30507	20.000	ng	0.00
21) Naphthalene-d8	11.091	136	128670	20.000	ng	0.00
39) Acenaphthene-d10	14.875	164	90151	20.000	ng	0.00
64) Phenanthrene-d10	17.607	188	208450	20.000	ng	0.00
76) Chrysene-d12	21.884	240	212428	20.000	ng	0.00
86) Perylene-d12	25.268	264	220046	20.000	ng	-0.02
System Monitoring Compounds						
5) 2-Fluorophenol	5.785	112	118179	67.830	ng	0.00
7) Phenol-d6	7.407	99	95164	37.701	ng	0.00
23) Nitrobenzene-d5	9.434	82	225703	89.571	ng	0.00
42) 2,4,6-Tribromophenol	16.355	330	163692	167.029	ng	0.00
45) 2-Fluorobiphenyl	13.506	172	529070	96.056	ng	0.00
79) Terphenyl-d14	20.180	244	888477	86.899	ng	0.00
Target Compounds						
19) n-Nitroso-di-n-propyla...	9.434	70	29714	14.176	ng	# 74
51) 2,6-Dinitrotoluene	14.875	165	11831	8.214	ng	# 19
57) 2,4-Dinitrotoluene	14.875	165	11831	5.660	ng	# 18
67) 4-Bromophenyl-phenylether	16.355	248	10265	5.069	ng	# 1
77) Benzidine	20.180	184	13206	2.568	ng	# 90

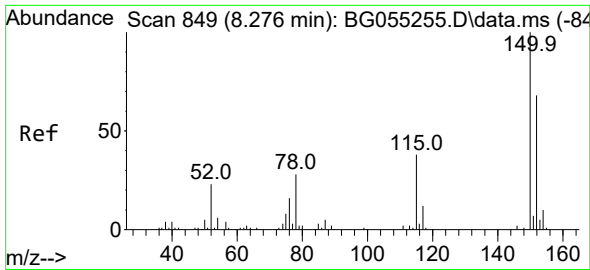
(#) = qualifier out of range (m) = manual integration (+) = signals summed

Data Path : Z:\svoasrv\HPCHEM1\BNA_G\Data\BG102822\
 Data File : BG055350.D
 Acq On : 28 Oct 2022 20:44
 Operator : CG/JU
 Sample : N5290-01
 Misc :
 ALS Vial : 9 Sample Multiplier: 1

Instrument :
 BNA_G
 ClientSampleId :
 257248-7

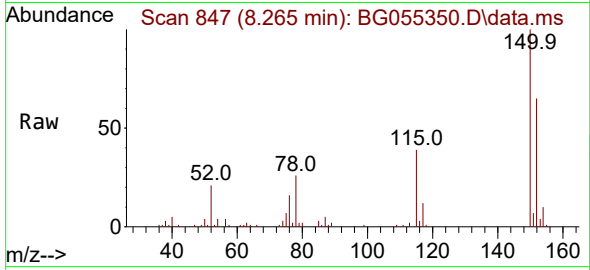
Quant Time: Oct 29 04:56:05 2022
 Quant Method : Z:\svoasrv\HPCHEM1\BNA_G\Methods\8270-BG102422.M
 Quant Title : ASP BNA STANDARDS FOR 5 POINT CALIBRATION
 QLast Update : Sat Oct 29 04:52:38 2022
 Response via : Initial Calibration



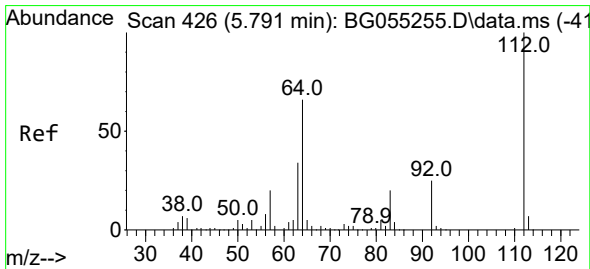
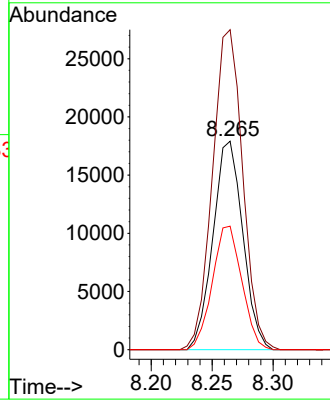
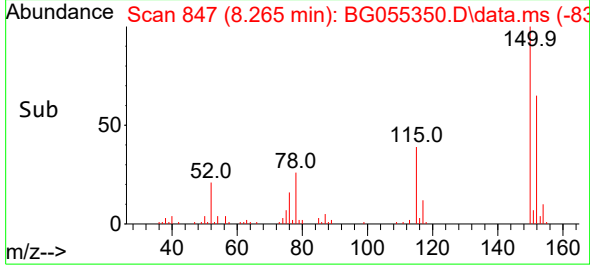


#1
 1,4-Dichlorobenzene-d4
 Concen: 20.000 ng
 RT: 8.265 min Scan# 84
 Delta R.T. -0.000 min
 Lab File: BG055350.D
 Acq: 28 Oct 2022 20:44

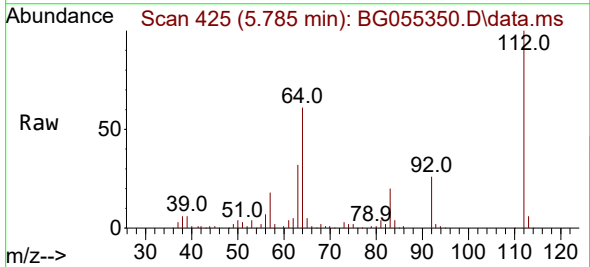
Instrument :
 BNA_G
 ClientSampleId :
 257248-7



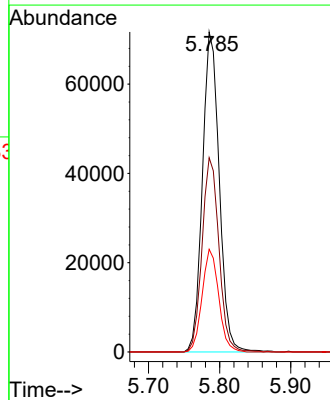
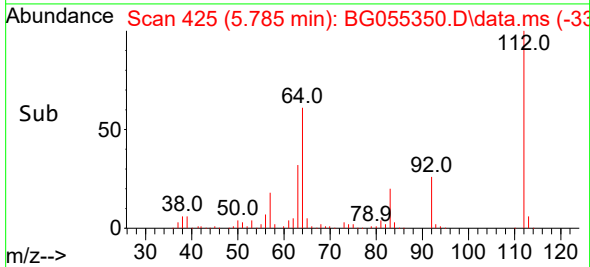
Tgt Ion:152 Resp: 30507
 Ion Ratio Lower Upper
 152 100
 150 153.4 118.2 177.4
 115 59.2 44.5 66.7

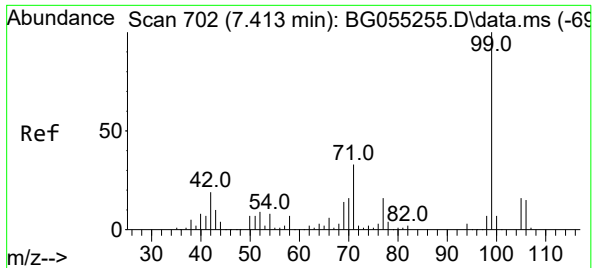


#5
 2-Fluorophenol
 Concen: 67.830 ng
 RT: 5.785 min Scan# 425
 Delta R.T. -0.000 min
 Lab File: BG055350.D
 Acq: 28 Oct 2022 20:44



Tgt Ion:112 Resp: 118179
 Ion Ratio Lower Upper
 112 100
 64 60.7 52.6 78.8
 63 32.1 27.1 40.7

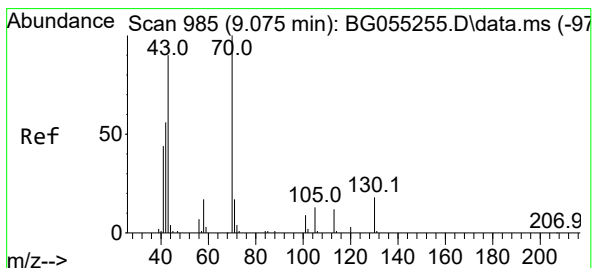
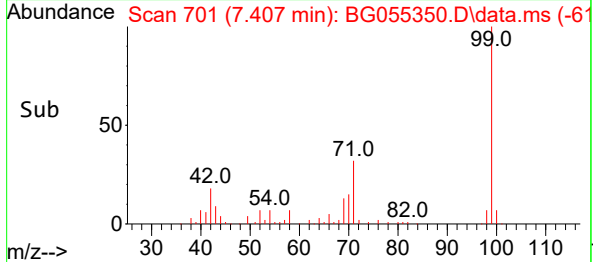
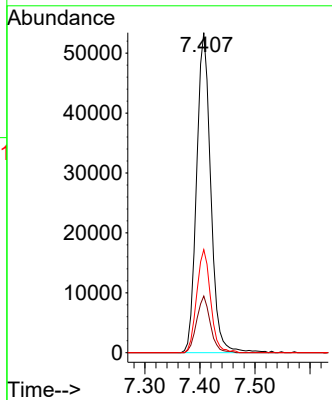
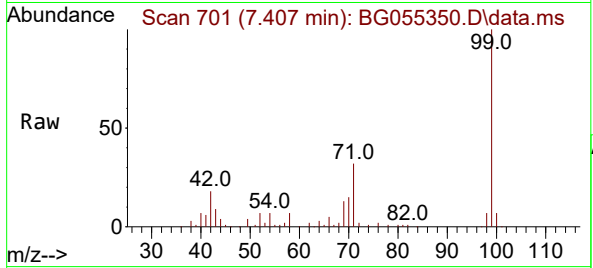




#7
 Phenol-d6
 Concen: 37.701 ng
 RT: 7.407 min Scan# 701
 Delta R.T. -0.006 min
 Lab File: BG055350.D
 Acq: 28 Oct 2022 20:44

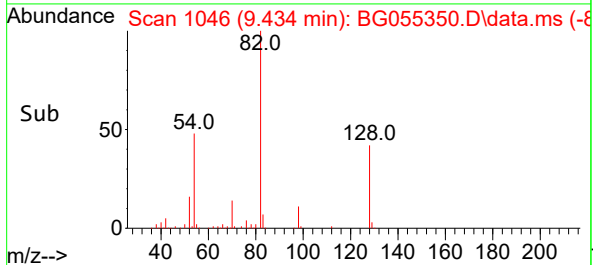
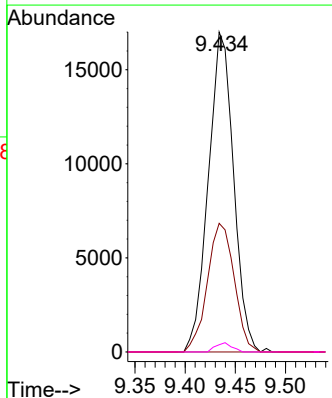
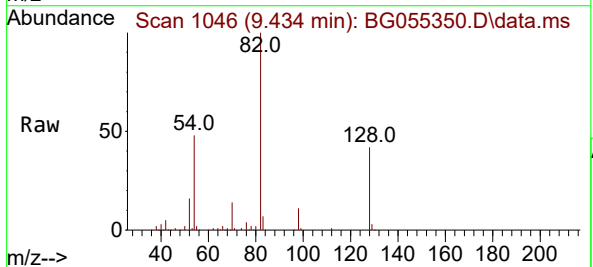
Instrument :
 BNA_G
 ClientSampleId :
 257248-7

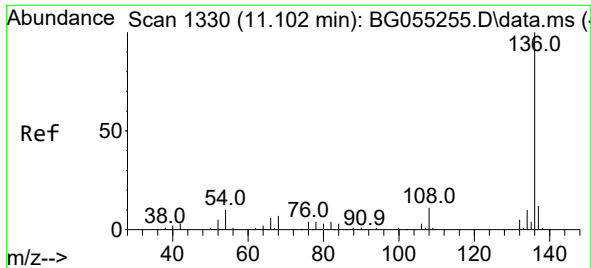
Tgt Ion	Resp	Ion Ratio	Lower	Upper
99	95164	100		
42	17.7	15.2	15.2	22.8
71	32.2	26.2	26.2	39.4



#19
 n-Nitroso-di-n-propylamine
 Concen: 14.176 ng
 RT: 9.434 min Scan# 1046
 Delta R.T. 0.364 min
 Lab File: BG055350.D
 Acq: 28 Oct 2022 20:44

Tgt Ion	Resp	Ion Ratio	Lower	Upper
70	29714	100		
42	40.2	45.8	45.8	68.6#
101	0.0	7.4	7.4	11.0#
130	2.3	14.1	14.1	21.1#



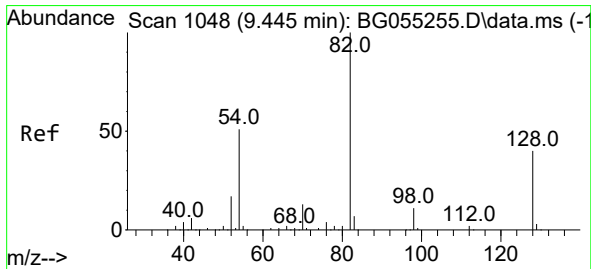
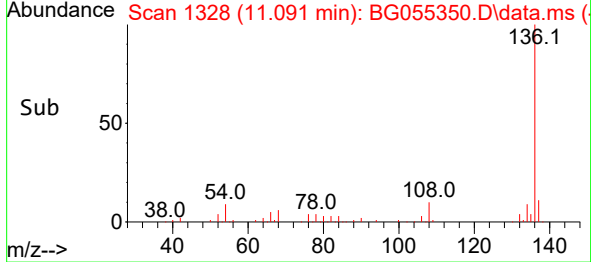
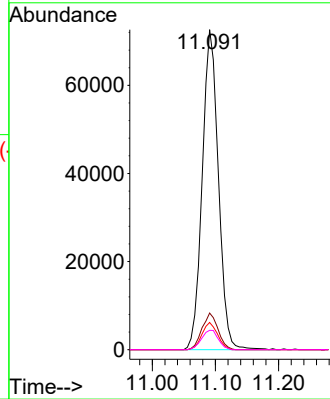
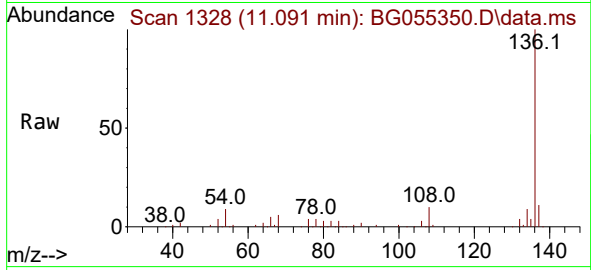


#21
 Naphthalene-d8
 Concen: 20.000 ng
 RT: 11.091 min Scan# 111
 Delta R.T. -0.006 min
 Lab File: BG055350.D
 Acq: 28 Oct 2022 20:44

Instrument :
 BNA_G
 ClientSampleId :
 257248-7

Tgt Ion:136 Resp: 128670

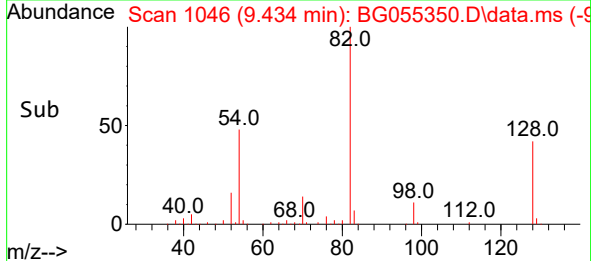
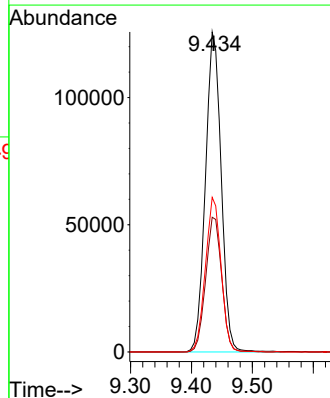
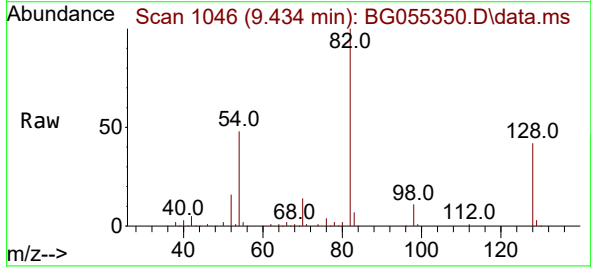
Ion	Ratio	Lower	Upper
136	100		
137	11.5	9.2	13.8
54	8.5	7.8	11.8
68	6.1	5.8	8.6

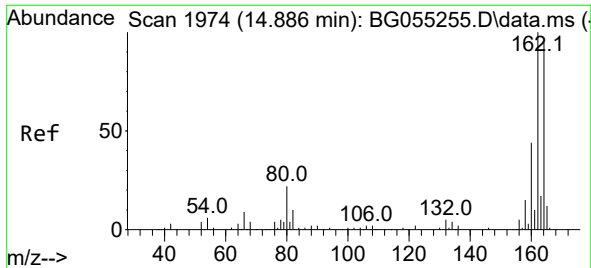


#23
 Nitrobenzene-d5
 Concen: 89.571 ng
 RT: 9.434 min Scan# 1046
 Delta R.T. -0.006 min
 Lab File: BG055350.D
 Acq: 28 Oct 2022 20:44

Tgt Ion: 82 Resp: 225703

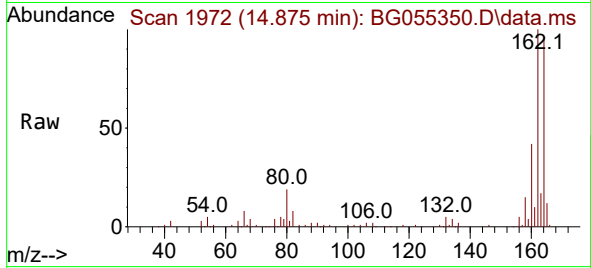
Ion	Ratio	Lower	Upper
82	100		
128	42.1	32.0	48.0
54	48.3	40.9	61.3



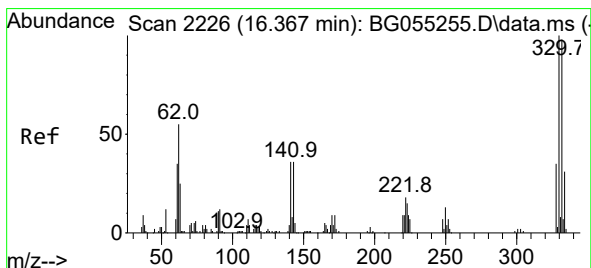
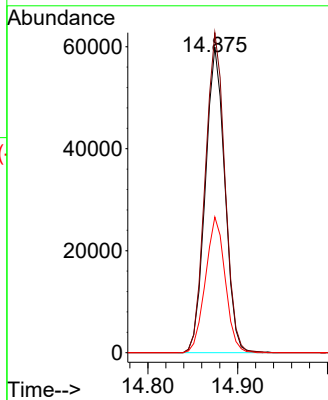
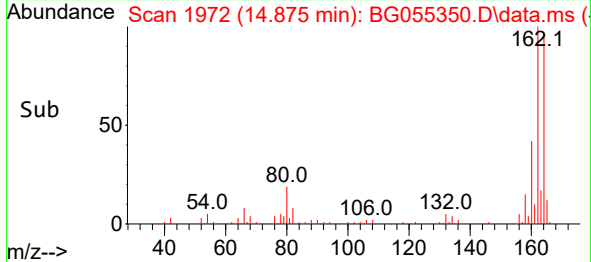


#39
 Acenaphthene-d10
 Concen: 20.000 ng
 RT: 14.875 min Scan# 1972
 Delta R.T. -0.006 min
 Lab File: BG055350.D
 Acq: 28 Oct 2022 20:44

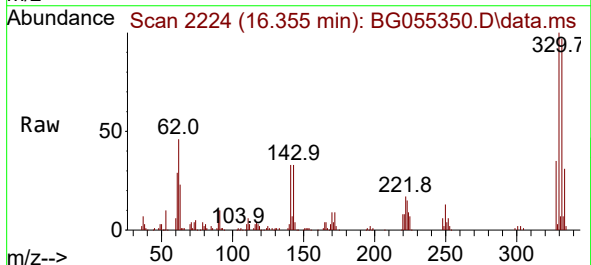
Instrument :
 BNA_G
 ClientSampleId :
 257248-7



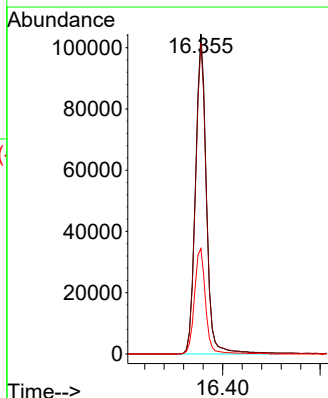
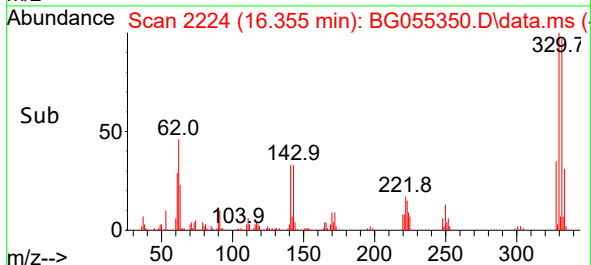
Tgt Ion:164 Resp: 90151
 Ion Ratio Lower Upper
 164 100
 162 104.7 84.0 126.0
 160 44.4 36.7 55.1

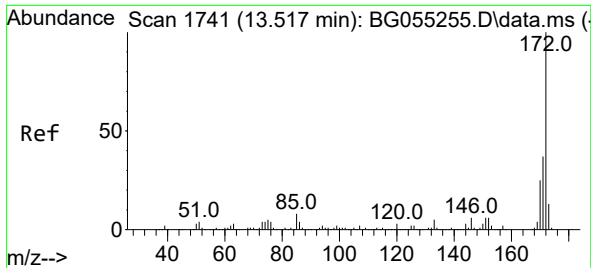


#42
 2,4,6-Tribromophenol
 Concen: 167.029 ng
 RT: 16.355 min Scan# 2224
 Delta R.T. -0.006 min
 Lab File: BG055350.D
 Acq: 28 Oct 2022 20:44



Tgt Ion:330 Resp: 163692
 Ion Ratio Lower Upper
 330 100
 332 97.4 77.4 116.0
 141 33.3 29.8 44.8



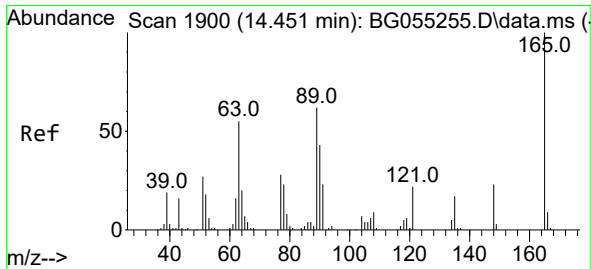
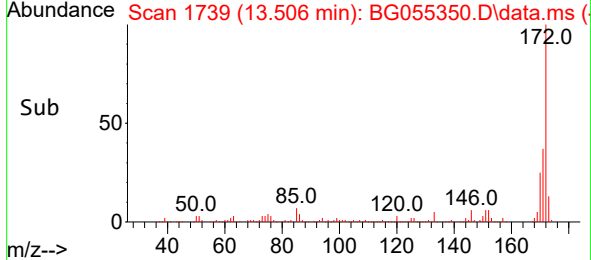
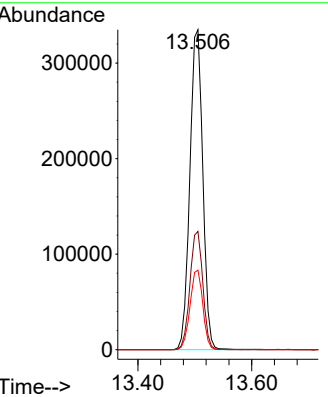
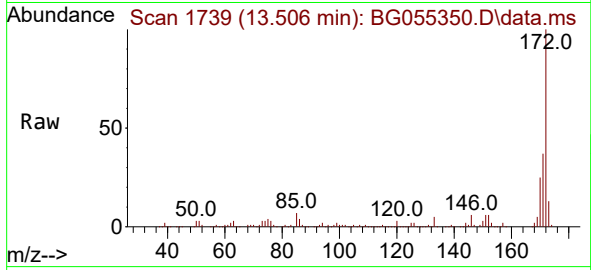


#45
 2-Fluorobiphenyl
 Concen: 96.056 ng
 RT: 13.506 min Scan# 11
 Delta R.T. -0.006 min
 Lab File: BG055350.D
 Acq: 28 Oct 2022 20:44

Instrument : BNA_G
 ClientSampleId : 257248-7

Tgt Ion:172 Resp: 529070

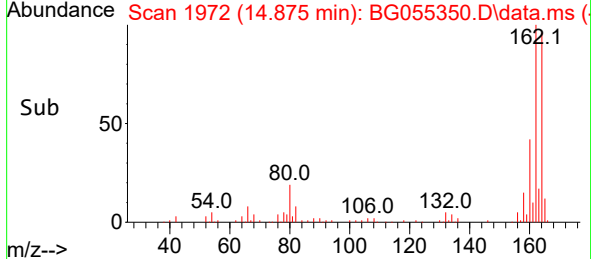
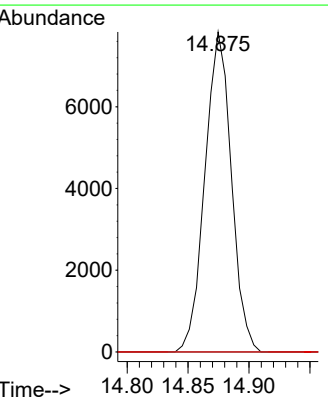
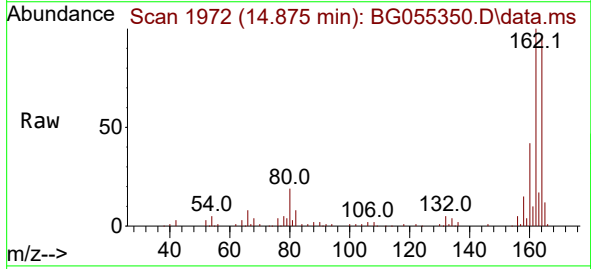
Ion	Ratio	Lower	Upper
172	100		
171	36.9	29.7	44.5
170	24.9	20.2	30.2

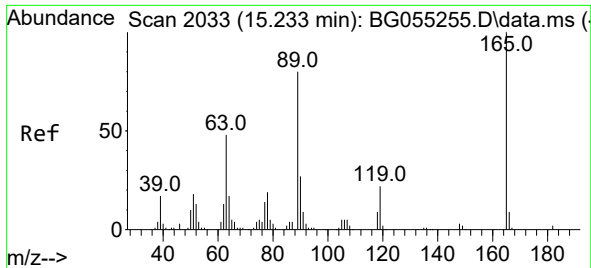


#51
 2,6-Dinitrotoluene
 Concen: 8.214 ng
 RT: 14.875 min Scan# 1972
 Delta R.T. 0.423 min
 Lab File: BG055350.D
 Acq: 28 Oct 2022 20:44

Tgt Ion:165 Resp: 11831

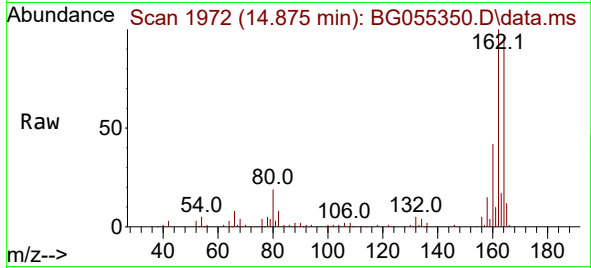
Ion	Ratio	Lower	Upper
165	100		
63	0.0	49.2	73.8#
89	0.0	49.9	74.9#





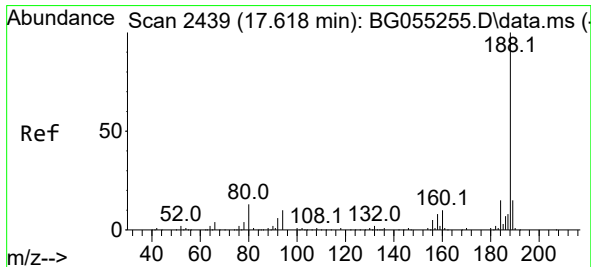
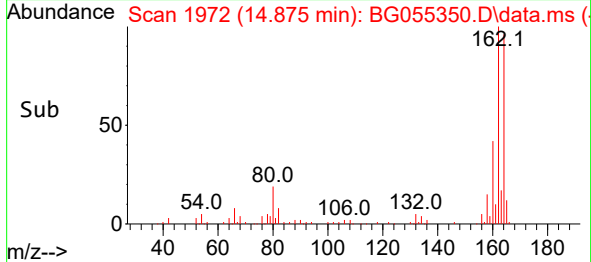
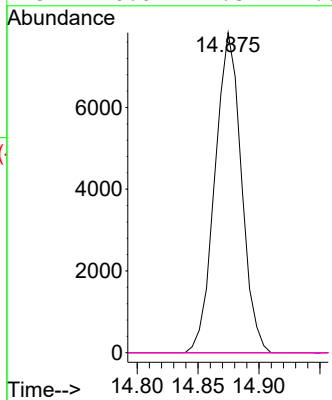
#57
 2,4-Dinitrotoluene
 Concen: 5.660 ng
 RT: 14.875 min Scan# 1972
 Delta R.T. -0.359 min
 Lab File: BG055350.D
 Acq: 28 Oct 2022 20:44

Instrument : BNA_G
 ClientSampleId : 257248-7



Tgt Ion:165 Resp: 11831

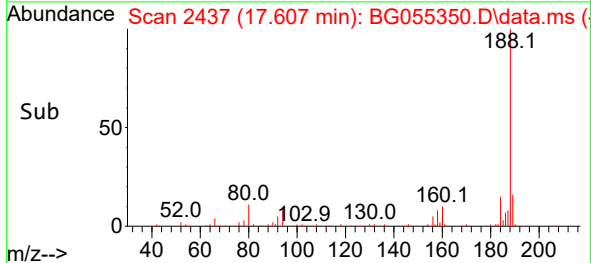
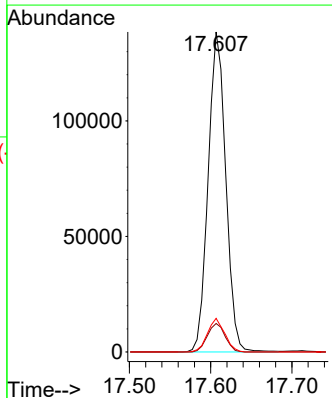
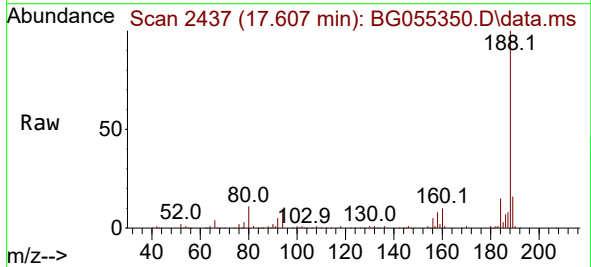
Ion	Ratio	Lower	Upper
165	100		
63	0.0	38.9	58.3#
89	0.0	64.2	96.4#
182	0.0	1.8	2.6#

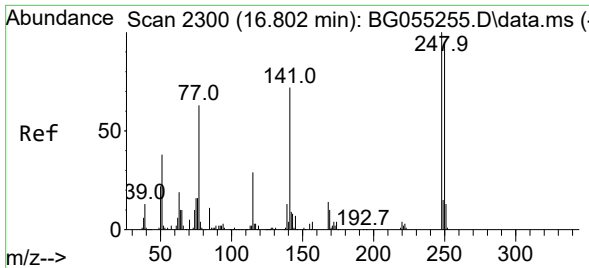


#64
 Phenanthrene-d10
 Concen: 20.000 ng
 RT: 17.607 min Scan# 2437
 Delta R.T. -0.006 min
 Lab File: BG055350.D
 Acq: 28 Oct 2022 20:44

Tgt Ion:188 Resp: 208450

Ion	Ratio	Lower	Upper
188	100		
94	8.9	8.2	12.4
80	10.5	10.1	15.1

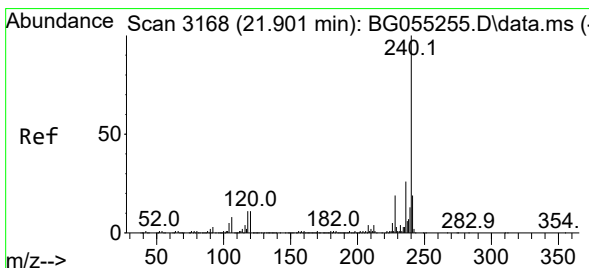
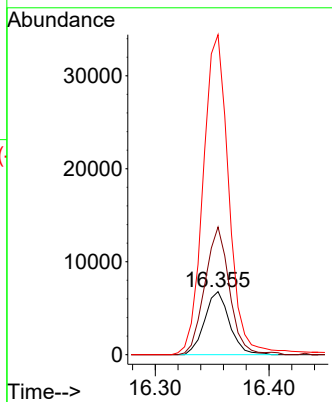
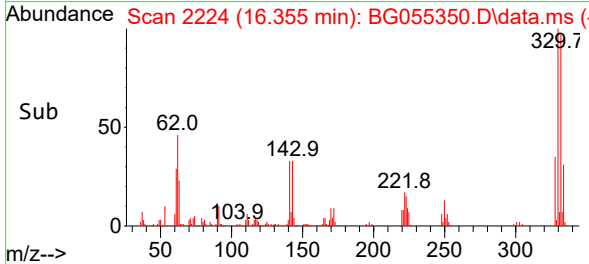
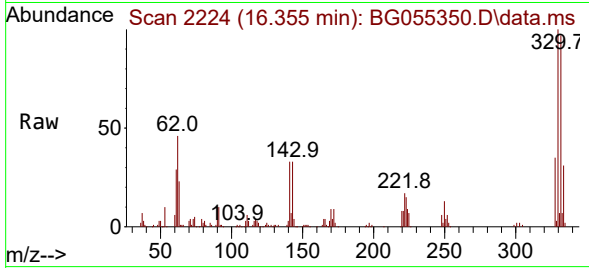




#67
 4-Bromophenyl-phenylether
 Concen: 5.069 ng
 RT: 16.355 min Scan# 21
 Delta R.T. -0.441 min
 Lab File: BG055350.D
 Acq: 28 Oct 2022 20:44

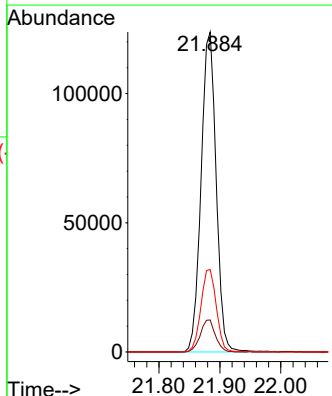
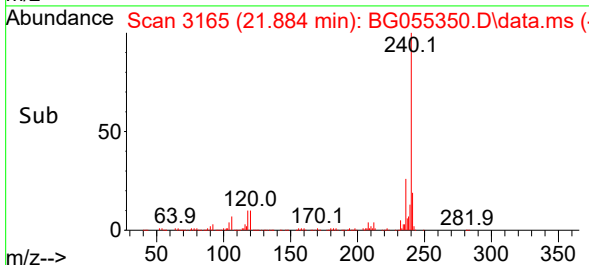
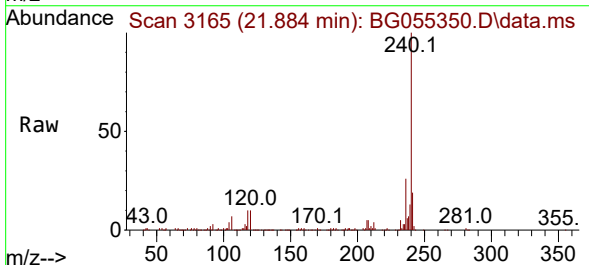
Instrument :
 BNA_G
 ClientSampleId :
 257248-7

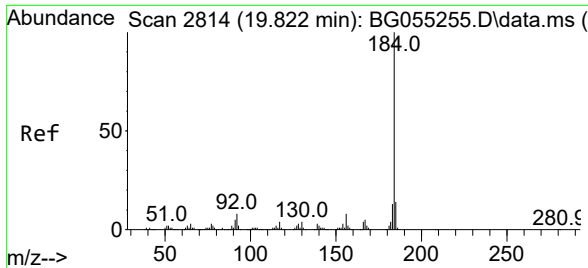
Tgt Ion	Resp	Lower	Upper
248	10265		
248	100		
250	202.5	76.0	114.0#
141	507.6	58.0	87.0#



#76
 Chrysene-d12
 Concen: 20.000 ng
 RT: 21.884 min Scan# 3165
 Delta R.T. -0.006 min
 Lab File: BG055350.D
 Acq: 28 Oct 2022 20:44

Tgt Ion	Resp	Lower	Upper
240	212428		
240	100		
120	10.0	8.9	13.3
236	25.8	21.0	31.4



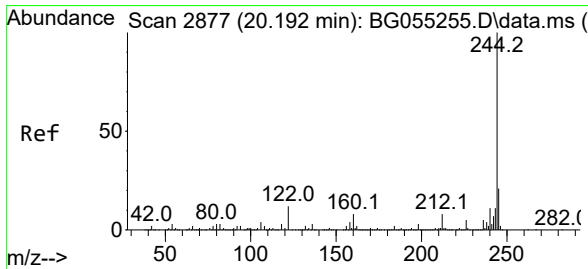
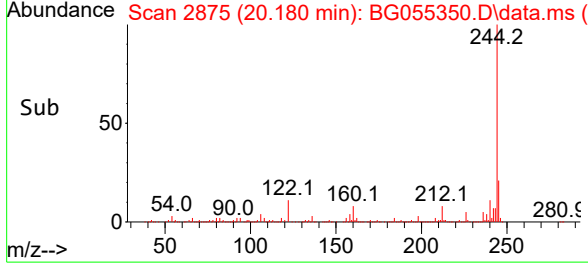
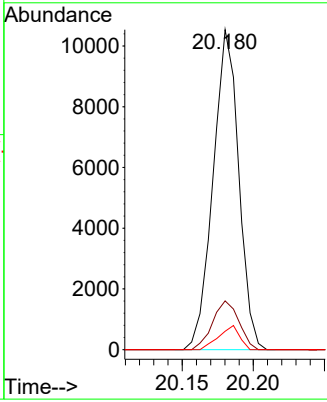
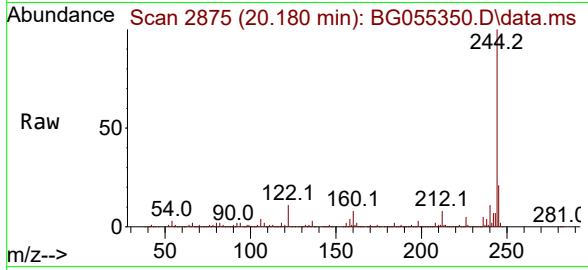


#77
 Benzidine
 Concen: 2.568 ng
 RT: 20.180 min Scan# 2814
 Delta R.T. 0.364 min
 Lab File: BG055350.D
 Acq: 28 Oct 2022 20:44

Instrument : BNA_G
 ClientSampleId : 257248-7

Tgt Ion:184 Resp: 13206

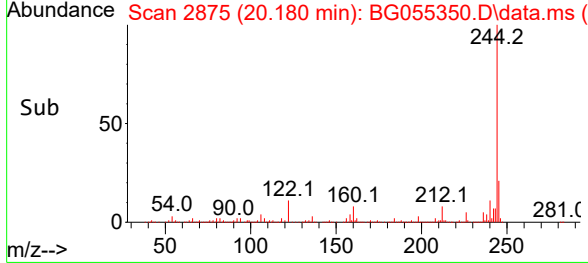
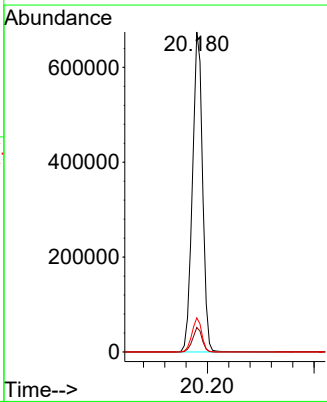
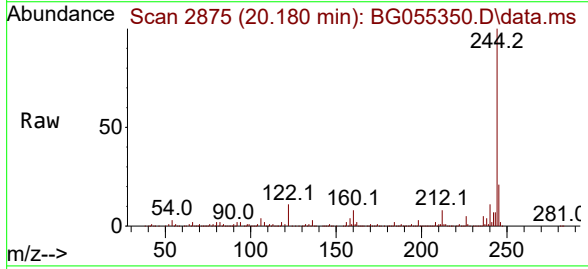
Ion	Ratio	Lower	Upper
184	100		
185	15.2	11.0	16.6
183	5.8	10.0	15.0

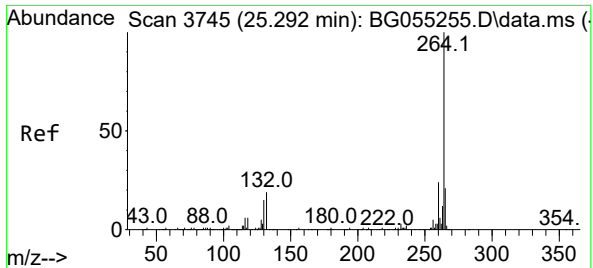


#79
 Terphenyl-d14
 Concen: 86.899 ng
 RT: 20.180 min Scan# 2875
 Delta R.T. -0.006 min
 Lab File: BG055350.D
 Acq: 28 Oct 2022 20:44

Tgt Ion:244 Resp: 888477

Ion	Ratio	Lower	Upper
244	100		
212	7.7	6.0	9.0
122	10.7	9.6	14.4





#86
 Perylene-d12
 Concen: 20.000 ng
 RT: 25.268 min Scan# 31
 Delta R.T. -0.018 min
 Lab File: BG055350.D
 Acq: 28 Oct 2022 20:44

Instrument :
 BNA_G
 ClientSampleId :
 257248-7

Tgt Ion:264 Resp: 220046

Ion	Ratio	Lower	Upper
264	100		
260	24.2	19.5	29.3
265	22.7	17.4	26.2

